

**PLANNING DATA FOR THE
ALASKA BAPTIST CONVENTION**

By

Richie C. Stanley

PLANNING AND SERVICES RESEARCH DEPARTMENT
Phillip B. Jones, Director
Richie C. Stanley, Associate Director

RESEARCH DIVISION
Orrin D. Morris, Director

HOME MISSION BOARD, SBC
1350 Spring Street, NW
Atlanta, GA 30367-5601

September 1989

FIGURES

1	Borough and Census Area Outline Map for Alaska.....	8
2	Percentage Change in Population for the United States by Decade, 1900 to 1980, and Projected Change, 1980 to 1990.....	9
3	Percentage Change in Population for Alaska by Decade, 1900 to 1980, and Projected Change, 1980 to 1990.....	10
4	Percentage Change in Population for the United States, 1980 to 1988.....	11
5	Percentage Change in Population for Alaska, 1980 to 1988.....	12
6	Estimated Population in Alaska by Borough and Census Area, 1989.....	17
7	Estimated Percentage Change in Population in Alaska by Borough and Census Area, 1980 to 1989	18
8	Distribution of Southern Baptist Churches in Alaska by Borough and Census Area, 1980 to 1989	23
9	Population Per Southern Baptist Church in Alaska by Borough and Census Area, 1989	32
10	Distribution of Southern Baptist Resident Members in Alaska by Borough and Census Area, 1988.....	37
11	Population Per Southern Baptist Resident Member in Alaska by Borough and Census Area, 1988/89	42
12	Churches, Misisons Operating, and Missions Started by Year, 1970 to 1988, With Projections to 1995	44
13	Total Members and Resident Members by Year, 1970 to 1988, With Projections to 1995	46
14	Sunday School Enrollment, Sunday School Attendance, and Percentage of Sunday School Enrollment Attending by Year, 1970 to 1988, With Projections to 1995	47
15	Baptisms, Baptism Rate Per 100 Resident Members, and Other Additions by Year, 1970 to 1988, With Projections to 1995.....	49

16	Total Gifts, Total Mission Expenditures, and Total Mission Expenditures As a Percent of Total Gifts by Year, 1970 to 1988, With Projections to 1995	51
17	Cooperative Program Information by Year, 1970 to 1988, With Projections to 1995	52

TABLES

1	Population and Population Change for Alaska by Borough and Census Area, and by Place, 1980 to 1989	13
2	Number of Churches, Missions, and Preaching Points for Alaska by Place, 1989	19
3	Estimated Population Per Church for Alaska by Place, 1989	24
4	Boroughs, Census Areas, and Places in Alaska Sorted by Population Per Church, 1989	28
5	Resident Membership and Population Per Resident Member for Alaska by Place, 1988/89	33
6	Boroughs, Census Areas, and Places in Alaska Sorted by Population Per Resident Member, 1989.....	38
7	Population and Inflation, Number of Churches, Missions, and Missions Started for Alaska by Year, 1970 to 1988, With Projections to 1995	43
8	Total and Resident Members, Sunday School Enrollment and Attendance, And Attendance As A Percentage of Enrollment for Alaska by Year, 1970 to 1988, With Projections to 1995	45
9	Baptisms, Baptism Rate Per 100 Resident Members, and Other Additions to Churches for Alaska by Year, 1970 to 1988, With Projections to 1995	48
10	Total Gifts, Total Missions Expenditures, and Missions Expenditures As A Percentage of Total Gifts, Total Cooperative Program Receipts and Cooperative Program Receipts As A Percentage of Total Gifts, And Cooperative Program Receipts Sent to the Executive Committee for Alaska by Year, 1970 to 1988, With Projections to 1995.....	50

Introduction

The purpose of this report is to assist the Alaska Baptist Convention and the Home Mission Board's Administration in planning for Southern Baptist work in Alaska. The first portion of the report contains tables and figures relating to population growth and distribution in Alaska as well as the distribution of churches and resident members. The important issue of where churches are needed is addressed.

The later portion of the report projects recent results of Southern Baptist work in Alaska into the early 1990s. Caution must be used not to over-interpret these projections. Population growth and the economy are so volatile that predicting even the near future for Alaska is risky.

Population Growth

Figures 2 and 3 contain the percentage growth in population by decade for the United States and Alaska respectively. A comparison shows that Alaska's growth has greatly exceeded the national average every decade beginning with the 1930s. Figures 4 and 5 give the annual percentage growth in population since 1980 for the country and state. Whereas nationally the annual growth for the present decade has been fairly steady at near one percent, Alaska's growth has ranged from 8.3 percent in 1983 to a loss of 1.5 percent in 1987. From 1980 to 1988, Alaska grew by 30.3 percent, second in the nation only to Nevada, which grew by 31.8 percent. Nationally the population grew by 8.5 percent during the 1980 to 1988 period.

Table 1 gives the 1980 Census population counts and estimates of the 1989 population for each borough and census area in Alaska, along with net and percentage change. Places in Alaska with an estimated 1989 population of at least 750 people are also included in Table 1, as are places with a present Southern Baptist work, regardless of population size. Places in Alaska include cities and Census Designated Places (CDPs).

Figure 6 and Figure 7 show that the 1989 population of Alaska as well as the major growth spots since 1980 are concentrated in Anchorage, Fairbanks, Juneau, and Matanuska-Susitna. Recently a Census Bureau report showed Matanuska-Susitna Borough to be the fastest growing county equivalent in America from 1980 to 1988.

The recent slow down in Alaska's growth and difficult times for the oil industry make predicting the state's future population growth very difficult. This will present a challenge to those who plan Southern Baptist work in Alaska.

Distribution of Churches, Missions, and Preaching Points

The Alaska Baptist Convention currently lists 56 churches, 26 missions, and 23 preaching points among its work. Table 2 gives the distribution of Southern Baptist work across the same places included in Table 1. Please recall that any place included in the table with no Southern Baptist work has a 1989 estimated population of 750 or more people. Figure 8 graphically shows the distribution of churches across Alaska's boroughs and census areas.

Table 3 provides the population per church ratio that would be attained if one more Southern Baptist church was added to each borough, census area, or place. Table 4 contains the same information as Table 3, but the areas are sorted by the population per church if one church was added. Listed first in Table 4 are boroughs and census areas. These are also shown in Figure 9. Bethel Census Area is the most populous unit with no Southern Baptist Church. Although Anchorage already has 19 of the 56 churches in Alaska, it still has a high population per church ratio. The Aleutian Islands and Nome also have over 7,500 people each with no present church. Furthermore there are no present missions or preaching points in Bethel, the Aleutian Islands, or North Slope Borough.

Table 4 continues with places sorted by the would be population per church ratio with one additional church. It is interesting that Anchorage, Juneau, and Fairbanks all have rather high population per church ratios. New churches are still needed in these Alaska cities because so many people live there. Among larger population areas with no Southern Baptist church are Eielson AFB, College, Bethel City, Nome, Sterling, and Barrow, which all have at least 2,500 persons. Of these six places only Nome (with one mission and one preaching point) has any Southern Baptist work. These may become targeted areas for new work. Table 4 should be carefully studied in conjunction with Table 2 in order to determine other priority areas.

Also notable is the presence of Southern Baptist work in places with very few people. For example, seven places (Northway, Teflin, Ekwok, Akhiok, Chalkyitsik, Elfin Cove, and Chitina) have a mission or preaching point and have estimated population less than 100 persons. This is not to say that these smaller places do not need a Southern Baptist witness for Christ, but it seems unlikely they will be able to support a church.

Distribution of Resident Members

Table 5 and Figure 10 give the distribution of Alaska's 11,130 resident members across the boroughs, census areas, and places. Members of missions are allocated geographically according to the location of the mission instead of the mother church. Membership figures are based on the 1988 Uniform Church Letters and do not include churches and missions begun since October 1988. Table 6 presents another version of the information in Table 5 which is sorted by the population per resident member which would result from the addition of one more member in each location. The first section of Table 6 shows that the boroughs and census areas which presently have no resident members have the highest ratios. Furthermore, places with no present resident members also rank high on the population per resident member ratio. The ten largest places with no resident members each have an estimated population of at least 2,000 people. Only one of these ten places has any Southern Baptist work. North Tongass Baptist Church is a new work in the North Tongass Highway CDP. Its resident membership is not available.

Twelve additional places have between 1,000 and 2,000 estimated population with no resident members. Among this group of twelve places there is only a single preaching point in Mountain Village as an active Southern Baptist work. Priority may be given in the future to some of these areas with enough people to support a church.

The Recent Past and Near Future

Table 7 begins the second portion of the report by reporting the number of churches, missions presently operating, and new missions started in Alaska from 1970 to 1988. Note that data for 1972 was not available. Projections are also included for the years 1989 through 1995, based on annual trends and population trends in some instances. Population and inflation figures are also given. Figure 12 provides bar charts to show the realized and

projected growth in number of churches, missions, and new missions started. Based on recent growth the number of churches is projected to grow by 3 or 4 annually through 1995. The number of missions started and operated must also increase if the number of churches is to increase.

Table 8 and Figure 13 show trends in church membership. Both total and resident membership figures should increase steadily for the next few years, tracking expected growth in churches and missions. Total membership may top 25,000 and resident membership 14,000 by 1995.

Table 8 and Figure 14 also depict realized and expected growth in Sunday School enrollment and attendance. Note that the rate of growth predicted is slower for attendance than enrollment, resulting in a projected continuation of the decline in the percentage of enrollees attending Sunday School.

Table 9 and Figure 15 present recent and future trends for baptisms and other additions to Alaska churches. Please note that since 1970 these figures have been very volatile, showing little trend in either direction. Thus the projections for baptisms and other additions are the most unreliable in this report and should be treated cautiously. One definite trend that is projected to continue is a decline in baptisms per 100 resident members.

Financial contributions are the focus of Table 10, Figure 16, and Figure 17. Total gifts, total missions expenditures, total Cooperative Program (CP) receipts, and CP receipts sent to the executive committee have all shown steady growth in the 70s and 80s. Thus all of the measures are projected to grow into the mid 90s as shown. Total gifts may near the \$10 million mark by 1995 and CP gifts may near \$650,000. The projections do predict declines in the percent of total gifts used for all missions expenditures and in total CP receipts as a percent of total gifts.

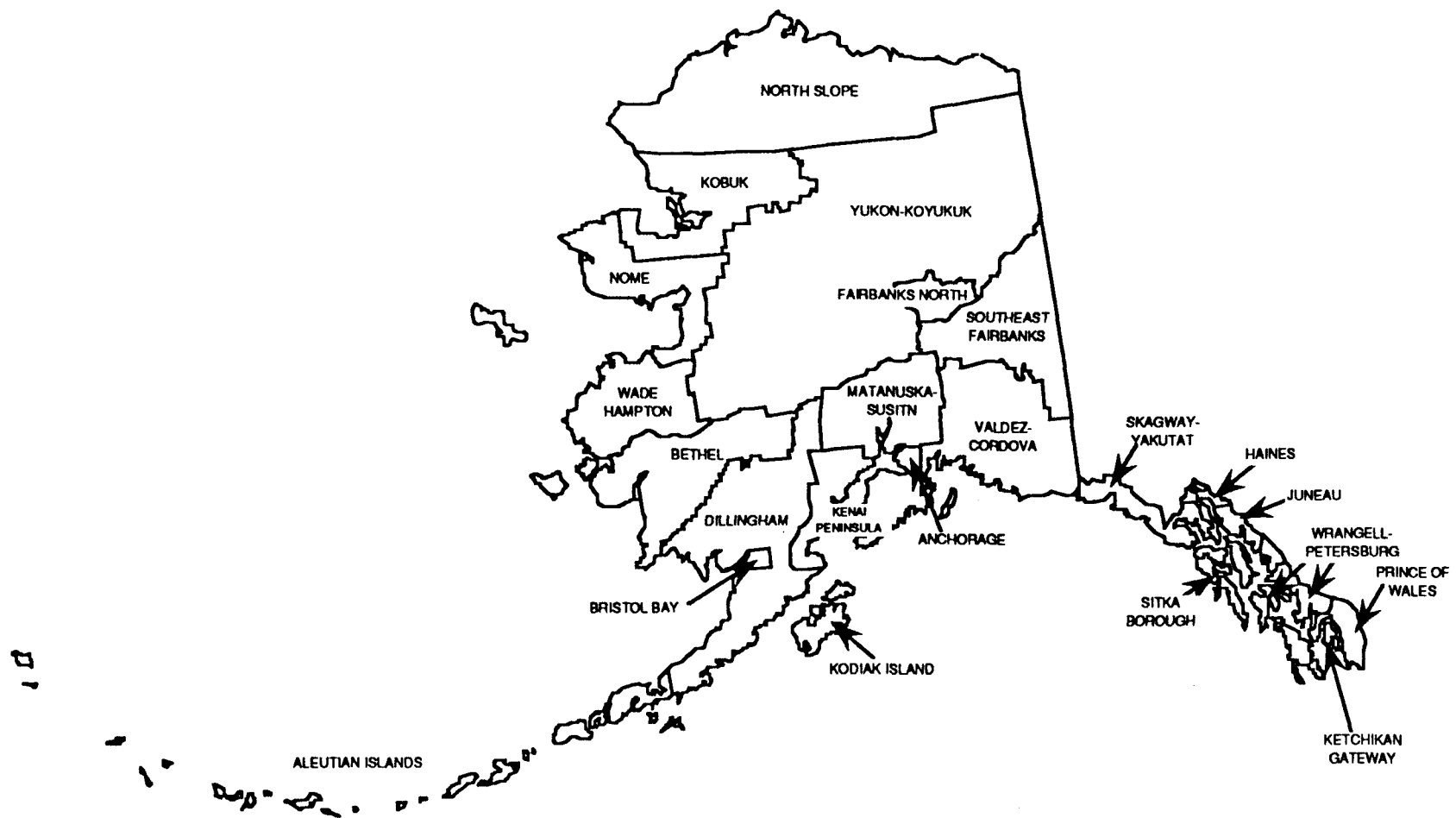
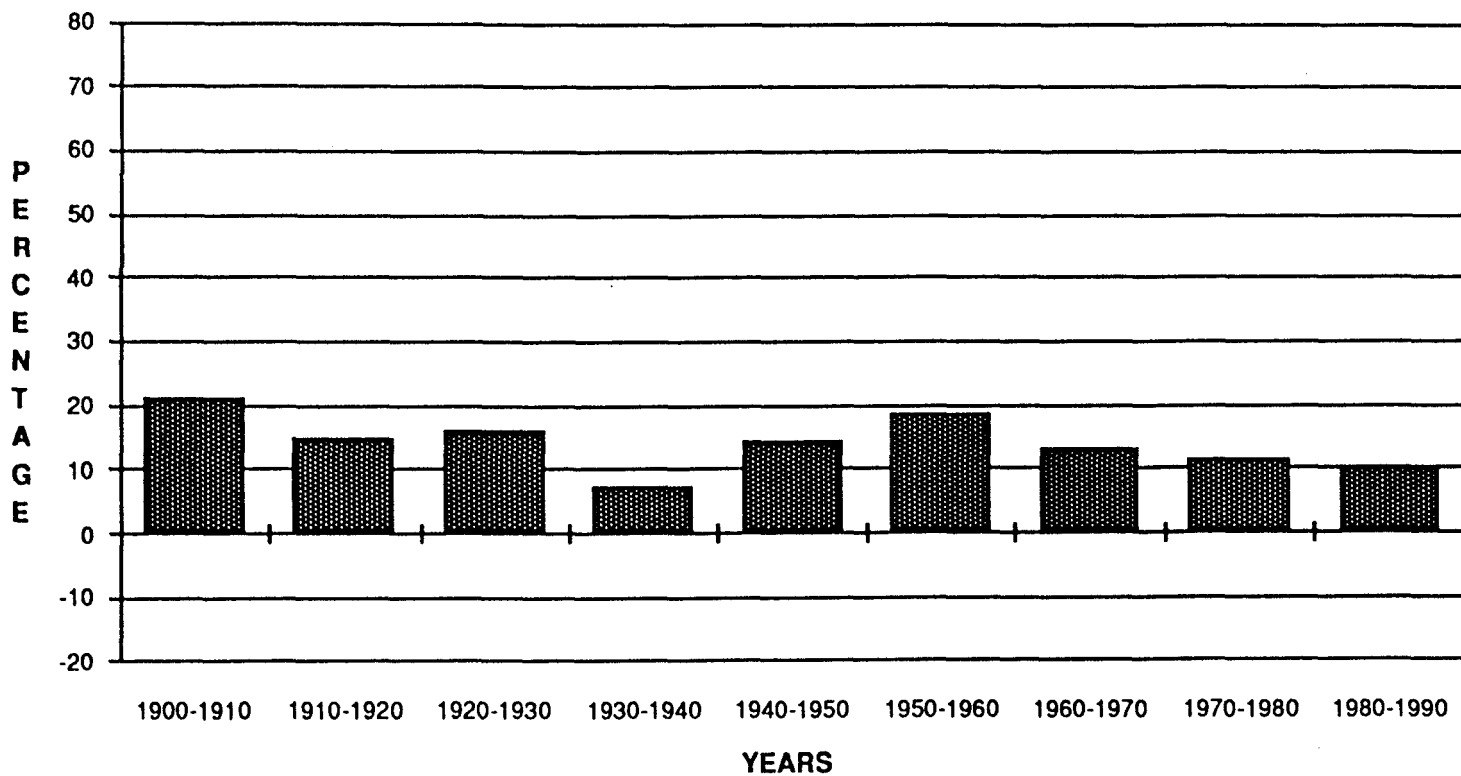


Fig. 1--Borough and Census Area Outline Map for Alaska.

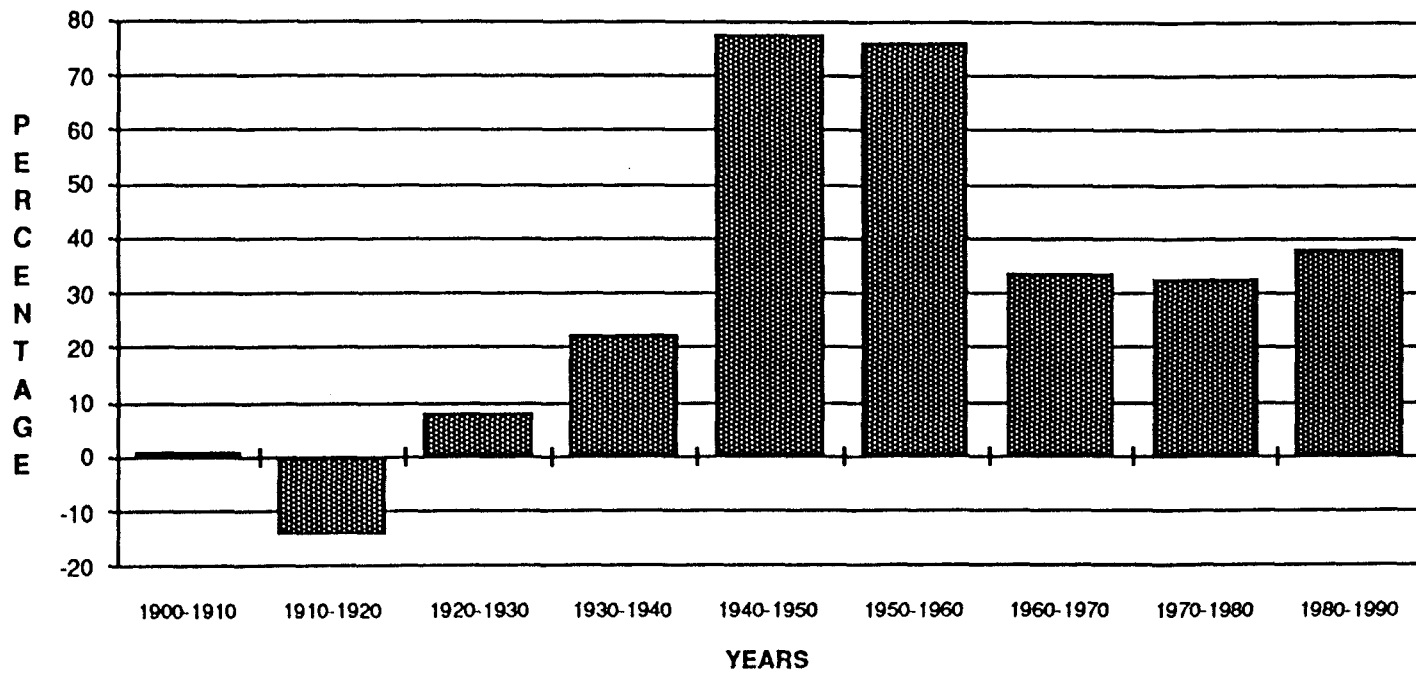
**PERCENTAGE CHANGE IN POPULATION FOR THE UNITED STATES
BY DECADE, 1900-1980, WITH PROJECTIONS TO 1990**



Source: Bureau of the Census, Washington, D.C.

Fig. 2--Percentage Change in Population for the United States by Decade, 1900 to 1980, and Projected Change, 1980 to 1990.

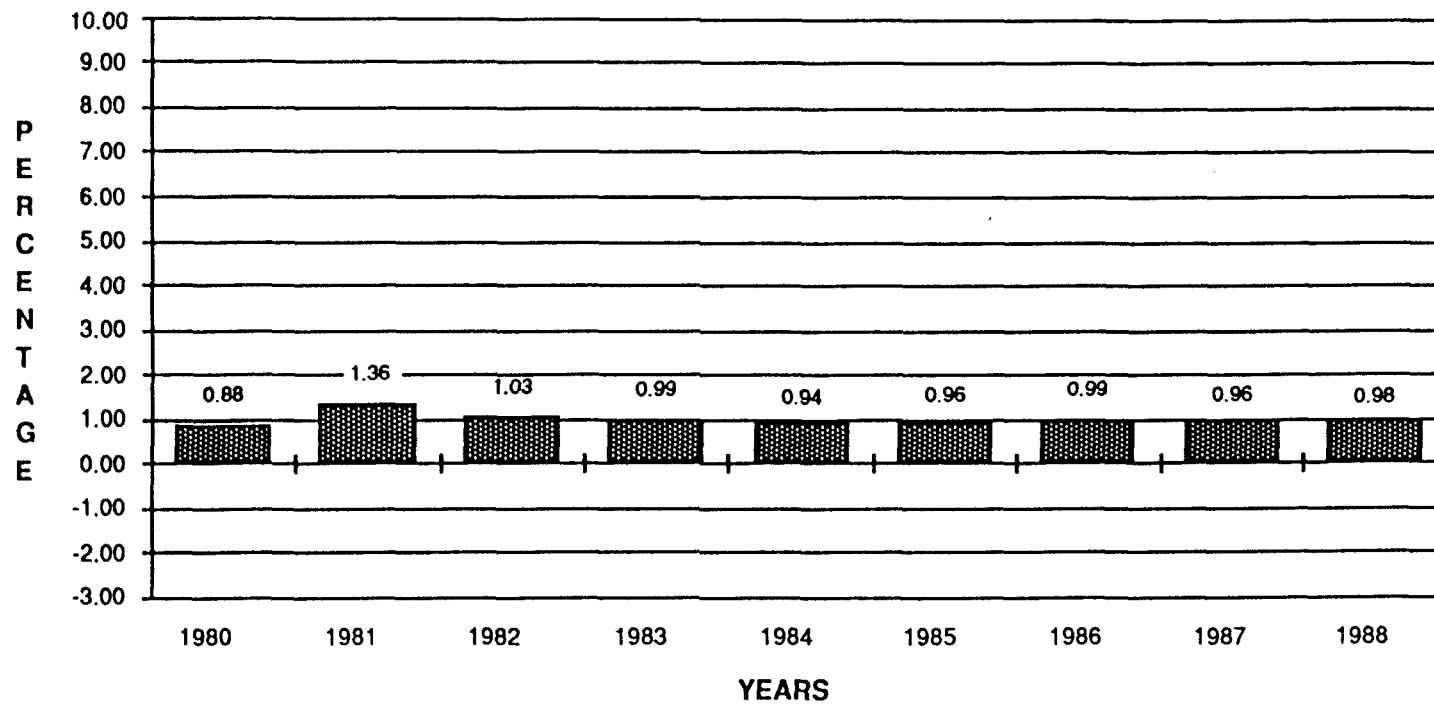
PERCENTAGE CHANGE IN POPULATION FOR ALASKA BY
DECADE, 1900-1980, WITH PROJECTIONS TO 1990



Source: Bureau of the Census, Washington, D.C.

Fig. 3--Percentage Change in Population for Alaska by Decade, 1900 to 1980, and Projected Change, 1980 to 1990.

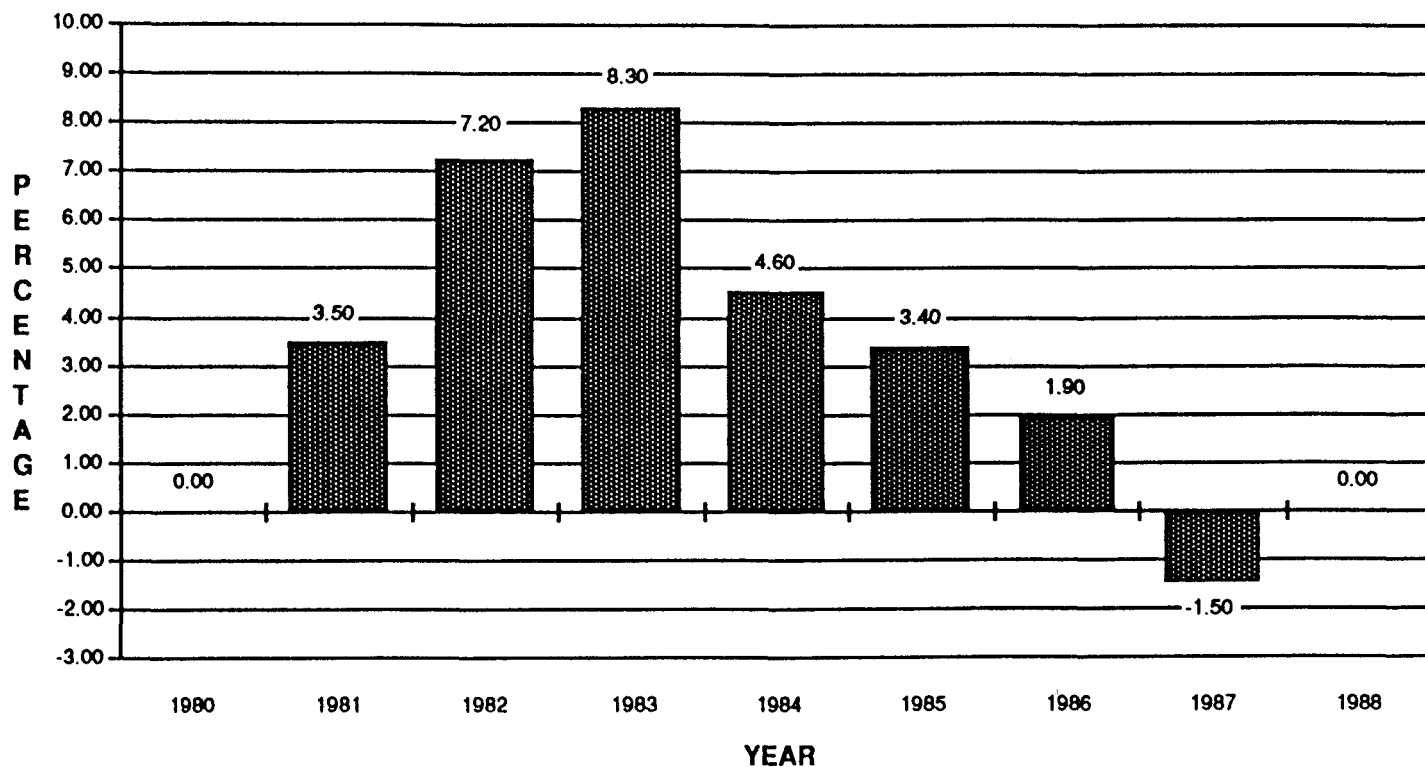
**ANNUAL PERCENTAGE CHANGE FROM PREVIOUS YEAR'S
POPULATION FOR THE UNITED STATES, 1980-1988**



Source: Bureau of the Census, Washington, D.C.

Fig. 4--Percentage Change in Population for the United States, 1980 to 1988.

ANNUAL PERCENTAGE CHANGE FROM PREVIOUS YEAR'S POPULATION FOR ALASKA, 1980-1988



Source: Bureau of the Census, Washington, D.C.

Fig. 5--Percentage Change in Population for Alaska, 1980 to 1988.

TABLE 1

**POPULATION AND POPULATION CHANGE FOR ALASKA
BY BOROUGH AND CENSUS AREA, AND
BY PLACE, 1980 TO 1989**

Boroughs and Census Areas Places	1980 Population	1989 Estimated Population	Net Number	Change Percent
ALASKA	401,851	530,370	128,519	32.0 %
ALEUTIAN ISLANDS CENSUS AREA	7,768	8,278	510	6.6
Adak Station (CDP)	3,315	1,103	-2,212	-66.7
Cold Bay (CDP)	228	1,170	942	413.0
St. Paul city	551	1,173	622	112.9
Sand Point city	625	1,651	1,026	164.1
Unalaska city	1,322	1,444	122	9.2
ANCHORAGE BOROUGH	174,431	223,003	48,572	27.8
Anchorage city	174,431	223,003	48,572	27.8
BETHEL CENSUS AREA	10,999	12,733	1,734	15.8
Akolmiut city	641	1,598	957	149.3
Bethel city	3,576	3,399	-177	-4.9
Kipnuk (CDP)	371	972	601	162.1
BRISTOL BAY BOROUGH	1,094	1,297	203	18.6
King Salmon (CDP)	545	659	114	20.9
DILLINGHAM CENSUS AREA	4,616	5,937	1,321	28.6
Dillingham city	1,563	2,026	463	29.6
Ekwok city	77	78	1	1.0
FAIRBANKS NORTH STAR BOROUGH	53,983	69,546	15,563	28.8
College (CDP)	4,043	5,901	1,858	46.0
Eielson AFB (CDP)	5,232	6,438	1,206	23.0
Fairbanks city	22,645	30,208	7,563	33.4
Moose Creek (CDP)	510	530	20	3.9
North Pole city	724	867	143	19.7
Salcha (CDP)	319	826	507	158.9
HAINES BOROUGH	1,680	1,641	-39	-2.3
Haines city	993	946	-47	-4.7

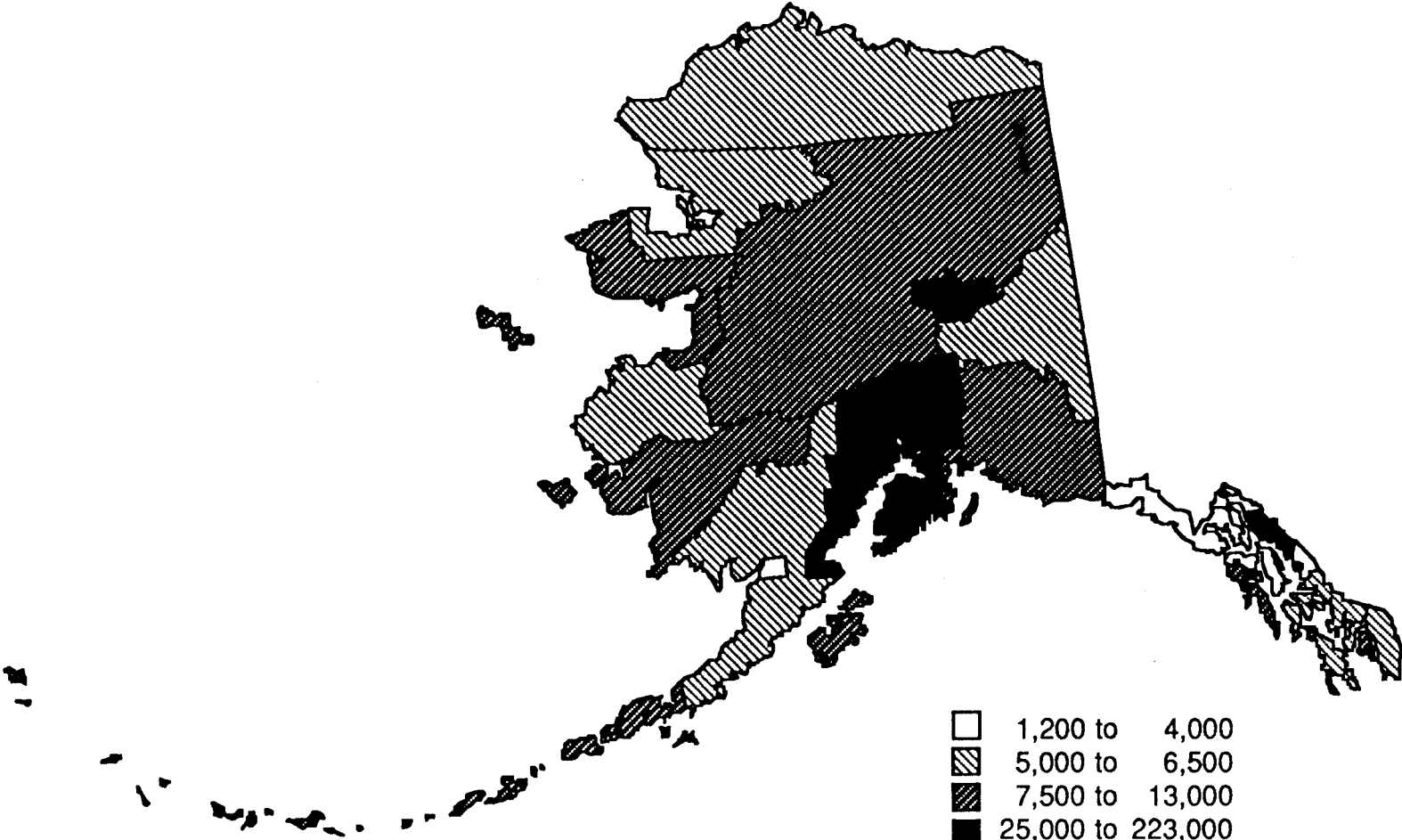
Table 1--continued

Boroughs and Census Areas Places	1980 Population	1989 Estimated Population	Net Change	
			Number	Percent
JUNEAU BOROUGH	19,528	26,391	6,863	35.1 %
Juneau city	19,528	26,391	6,863	35.1
KENAI PENINSULA BOROUGH	25,282	42,483	17,201	68.0
Homer city	2,209	1,632	-577	-26.1
Kasilof (CDP)	201	1,675	1,474	733.3
Kenai city	4,324	5,387	1,063	24.6
Moose Pass (CDP)	76	346	270	354.9
Nikishka (CDP)	1,109	1,106	-3	-0.3
Ninilchik (CDP)	341	1,340	999	293.1
Seldovia city	479	804	325	67.9
Seward city	1,843	4,571	2,728	148.0
Soldotna city	2,320	3,390	1,070	46.1
Sterling (CDP)	919	2,686	1,767	192.3
KETCHIKAN GATEWAY BOROUGH	11,316	11,063	-253	-2.2
Ketchikan city	7,198	5,919	-1,279	-17.8
North Tongass Highway (CDP)	1,722	2,954	1,232	71.6
KOBUK CENSUS AREA	4,831	6,062	1,231	25.5
Ambler city	192	414	222	115.7
Kiana city	345	508	163	47.4
Kobuk city	62	159	97	156.9
Kotzebue city	2,054	2,303	249	12.1
Selawik city	361	351	-10	-2.9
Shungnak city	202	153	-49	-24.4
KODIAK ISLAND BOROUGH	9,939	12,888	2,949	29.7
Akhiok city	105	76	-29	-27.6
Kodiak city	4,756	5,804	1,048	22.0
Kodiak Station (CDP)	1,370	2,285	915	66.8

Table 1--continued

Boroughs and Census Areas Places	1980	1989	Net	Change
	Population	Estimated Population	Number	Percent
MATANUSKA-SUSITNA BOROUGH	17,816	43,434	25,618	143.8 %
Big Lake (CDP)	410	5,298	4,888	1,192.3
Bodenburg Butte (CDP)	988	1,191	203	20.6
Houston city	370	924	554	149.7
Palmer city	2,141	3,060	919	42.9
Sutton (CDP)	182	913	731	401.8
Talkeetna (CDP)	264	1,178	914	346.1
Wasilla city	1,559	3,932	2,373	152.2
Willow (CDP)	139	568	429	308.8
NOME CENSUS AREA	6,537	7,704	1,167	17.9
Nome city	2,301	2,834	533	23.1
NORTH SLOPE BOROUGH	4,199	5,302	1,103	26.3
Barrow city	2,207	2,563	356	16.1
PRINCE OF WALES-OUTER KETCHIKAN	3,822	5,511	1,689	44.2
Coffman Cove (CDP)	193	206	13	6.7
Craig city	527	969	442	83.9
Metlakatla (CDP)	1,056	1,006	-50	-4.7
Thorne Bay (CDP)	320	461	141	44.2
SITKA BOROUGH	7,803	7,530	-273	-3.5
Sitka city	7,803	7,528	-275	-3.5
SKAGWAY-YAKUTAT-ANGOON	3,478	3,577	99	2.8
Elfin Cove (CDP)	28	51	23	82.5
Pelican city	180	210	30	16.7
Skagway city	768	572	-196	-25.5
Tenakee Springs city	138	120	-18	-12.7
Yakutat city	449	868	419	93.3
SOUTHEAST FAIRBANKS CENSUS AREA	5,676	6,347	671	11.8
Delta Junction city	945	1,027	82	8.7
Fort Greely (CDP)	1,635	1,233	-402	-24.6
Northway (CDP)	73	87	14	19.4
Teflin (CDP)	107	83	-24	-22.1
Tok (CDP)	589	1,076	487	82.6

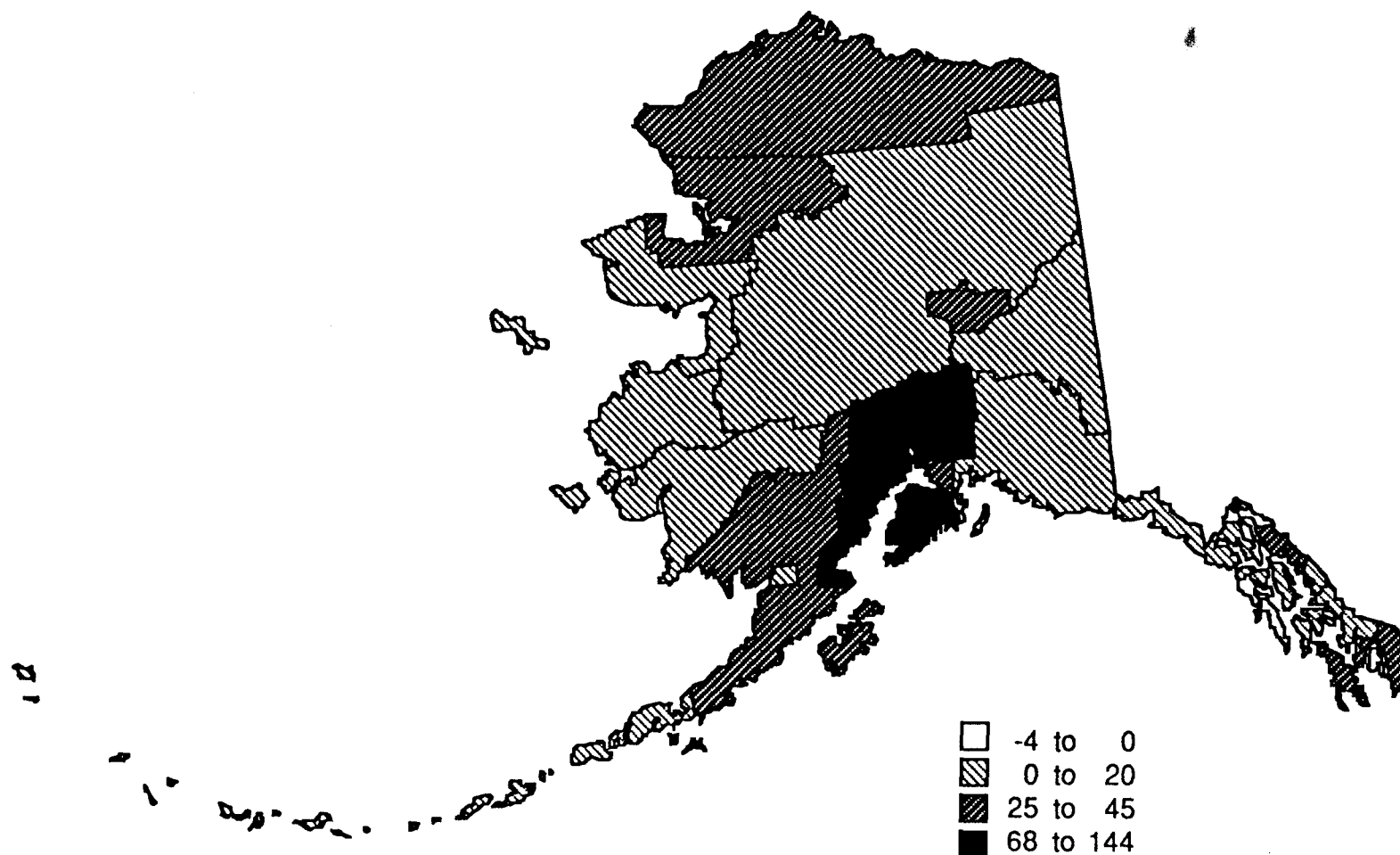
ESTIMATED POPULATION, 1989



Source: Bureau of the Census, Washington, D.C.

Fig. 6--Estimated Population in Alaska by Borough and Census Area, 1989.

ESTIMATED PERCENTAGE CHANGE IN POPULATION, 1980-1989



Source: Bureau of the Census, Washington, D.C.

Fig. 7--Estimated Percentage Change in Population in Alaska by Borough and Census Area, 1980 to 1989.

TABLE 2
NUMBER OF CHURCHES, MISSIONS, AND PREACHING POINTS
FOR ALASKA BY PLACE, 1989

Boroughs and Census Areas Places	Churches 1989	Missions 1989	Preaching Points 1989
ALASKA	56	26	23
ALEUTIAN ISLANDS CENSUS AREA	0	0	0
Adak Station (CDP)	0	0	0
Cold Bay (CDP)	0	0	0
St. Paul city	0	0	0
Sand Point city	0	0	0
Unalaska city	0	0	0
ANCHORAGE BOROUGH	19	2	2
Anchorage city	19	2	2
BETHEL CENSUS AREA	0	0	0
Akolmiut city	0	0	0
Bethel city	0	0	0
Kipnuk (CDP)	0	0	0
BRISTOL BAY BOROUGH	0	1	0
King Salmon (CDP)	0	1	0
DILLINGHAM CENSUS AREA	0	0	1
Dillingham city	0	0	0
Ekwok city	0	0	1
FAIRBANKS NORTH STAR BOROUGH	10	2	0
College (CDP)	0	0	0
Eielson AFB (CDP)	0	0	0
Fairbanks city	6	2	0
Moose Creek (CDP)	1	0	0
North Pole city	2	0	0
Salcha (CDP)	1	0	0
HAINES BOROUGH	0	0	1
Haines city	0	0	1

Table 2--continued

Boroughs and Census Areas Places	Churches 1989	Missions 1989	Preaching Points 1989
JUNEAU BOROUGH	3	0	2
Juneau city	3	0	2
KENAI PENINSULA BOROUGH	6	2	1
Homer city	1	0	0
Kasilof (CDP)	0	0	0
Kenai city	2	0	0
Moose Pass (CDP)	0	1	0
Nikishka (CDP)	0	1	0
Ninilchik (CDP)	0	0	0
Seldovia city	0	0	1
Seward city	1	0	0
Soldotna city	2	0	0
Sterling (CDP)	0	0	0
KETCHIKAN GATEWAY BOROUGH	2	0	0
Ketchikan city	1	0	0
North Tongass Highway (CDP)	1	0	0
KOBUK CENSUS AREA	1	5	0
Ambler city	0	1	0
Kiana city	0	1	0
Kobuk city	0	1	0
Kotzebue city	1	0	0
Selawik city	0	1	0
Shungnak city	0	1	0
KODIAK ISLAND BOROUGH	1	0	3
Akhiok city	0	0	1
Kodiak city	1	0	2
Kodiak Station (CDP)	0	0	0

Table 2--continued

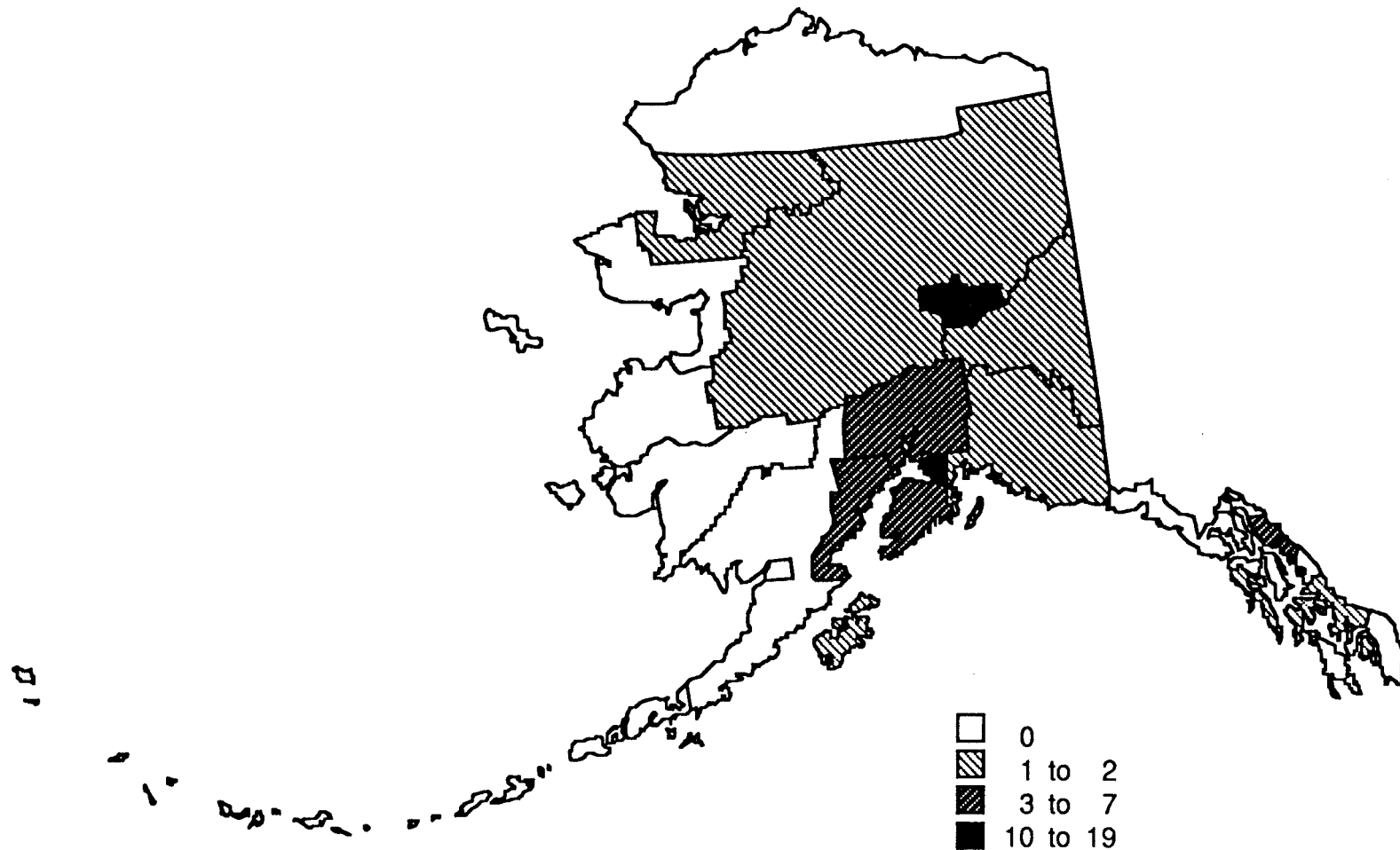
Boroughs and Census Areas Places	Churches 1989	Missions 1989	Preaching Points 1989
MATANUSKA-SUSITNA BOROUGH	7	3	2
Big Lake (CDP)	1	0	0
Bodenburg Butte (CDP)	1	0	0
Houston city	0	0	0
Palmer city	1	0	1
Sutton (CDP)	0	1	0
Talkeetna (CDP)	0	0	0
Wasilla city	2	1	0
Willow (CDP)	2	1	1
NOME CENSUS AREA	0	1	1
Nome city	0	1	1
NORTH SLOPE BOROUGH	0	0	0
Barrow city	0	0	0
PRINCE OF WALES-OUTER KETCHIKAN	0	1	2
Coffman Cove (CDP)	0	1	0
Craig city	0	0	0
Metlakatla (CDP)	0	0	0
Thorne Bay (CDP)	0	0	2
SITKA BOROUGH	1	0	0
Sitka city	1	0	0
SKAGWAY-YAKUTAT-ANGOON	0	2	2
Elfin Cove (CDP)	0	0	1
Pelican city	0	0	1
Skagway city	0	1	0
Tenakee Springs city	0	1	0
Yakutat city	0	0	0
SOUTHEAST FAIRBANKS CENSUS AREA	1	2	1
Delta Junction city	1	0	0
Fort Greely (CDP)	0	0	0
Northway (CDP)	0	1	0
Teflin (CDP)	0	0	1
Tok (CDP)	0	1	0

Table 2--continued

Boroughs and Census Areas Places	Churches 1989	Missions 1989	Preaching Points 1989
VALDEZ-CORDOVA CENSUS AREA	2	3	1
Chitina (CDP)	0	1	1
Copper Center (CDP)	1	0	0
Cordova city	0	0	0
Glennallen (CDP)	0	1	0
Valdez city	1	0	0
Whittier city	0	1	0
WADE HAMPTON CENSUS AREA	0	1	1
Emmonak city	0	1	0
Mountain Village city	0	0	1
WRANGELL-PETERSBURG CENSUS AREA	1	0	1
Petersburg city	1	0	0
Port Alexander city	0	0	1
Wrangell city	0	0	0
YUKON-KOYUKUK CENSUS AREA	2	1	2
Anderson city	1	0	0
Central (CDP)	0	0	1
Chalkyitsik (CDP)	0	0	1
Fort Yukon city	0	1	0
Galena city	0	0	0
Healy (CDP)	1	0	0

Source: Alaska Baptist Convention, Anchorage, AK

SOUTHERN BAPTIST CHURCHES, 1989



Source: Alaska Baptist Convention, Anchorage, Ak.

Fig. 8--Distribution of Southern Baptist Churches in Alaska by Borough and Census Area, 1989.

TABLE 3

**ESTIMATED POPULATION PER CHURCH
FOR ALASKA BY PLACE, 1989**

Boroughs and Census Areas	1988/89
Places	Est Pop Per Church +1
ALASKA	9,305
ALEUTIAN ISLANDS CENSUS AREA	8,278
Adak Station (CDP)	1,103
Cold Bay (CDP)	1,170
St. Paul city	1,173
Sand Point city	1,651
Unalaska city	1,444
ANCHORAGE BOROUGH	11,150
Anchorage city	11,150
BETHEL CENSUS AREA	12,733
Akolmiut city	1,598
Bethel city	3,399
Kipnuk (CDP)	972
BRISTOL BAY BOROUGH	1,297
King Salmon (CDP)	659
DILLINGHAM CENSUS AREA	5,937
Dillingham city	2,026
Ekwok city	78
FAIRBANKS NORTH STAR BOROUGH	6,322
College (CDP)	5,901
Eielson AFB (CDP)	6,438
Fairbanks city	4,315
Moose Creek (CDP)	265
North Pole city	289
Salcha (CDP)	413
HAINES BOROUGH	1,641
Haines city	946

Table 3--continued

Boroughs and Census Areas Places	1988/89 Est Pop Per Church +1
JUNEAU BOROUGH	6,598
Juneau city	6,598
KENAI PENINSULA BOROUGH	6,069
Homer city	816
Kasilof (CDP)	1,675
Kenai city	1,796
Moose Pass (CDP)	346
Nikishka (CDP)	1,106
Ninilchik (CDP)	1,340
Seldovia city	804
Seward city	2,286
Soldotna city	1,130
Sterling (CDP)	2,686
KETCHIKAN GATEWAY BOROUGH	3,688
Ketchikan city	2,959
North Tongass Highway (CDP)	1,477
KOBUK CENSUS AREA	3,031
Ambler city	414
Kiana city	508
Kobuk city	159
Kotzebue city	1,152
Selawik city	351
Shungnak city	153
KODIAK ISLAND BOROUGH	6,444
Akhiok city	76
Kodiak city	2,902
Kodiak Station (CDP)	2,285

Table 3--continued

Boroughs and Census Areas Places	1988/89 Est Pop Per Church +1
MATANUSKA-SUSITNA BOROUGH	5,429
Big Lake (CDP)	2,649
Bodenburg Butte (CDP)	596
Houston city	924
Palmer city	1,530
Sutton (CDP)	913
Talkeetna (CDP)	1,178
Wasilla city	1,311
Willow (CDP)	189
NOME CENSUS AREA	7,704
Nome city	2,834
NORTH SLOPE BOROUGH	5,302
Barrow city	2,563
PRINCE OF WALES-OUTER KETCHIKAN	5,511
Coffman Cove (CDP)	206
Craig city	969
Metlakatla (CDP)	1,006
Thorne Bay (CDP)	461
SITKA BOROUGH	3,765
Sitka city	3,764
SKAGWAY-YAKUTAT-ANGOON	3,577
Elfin Cove (CDP)	51
Pelican city	210
Skagway city	572
Tenakee Springs city	120
Yakutat city	868
SOUTHEAST FAIRBANKS CENSUS AREA	3,174
Delta Junction city	514
Fort Greely (CDP)	1,233
Northway (CDP)	87
Teffin (CDP)	83
Tok (CDP)	1,076

Table 3--continued

Boroughs and Census Areas Places	<u>1988/89</u> Est Pop Per Church +1
VALDEZ-CORDOVA CENSUS AREA	2,843
Chitina (CDP)	51
Copper Center (CDP)	63
Cordova city	2,022
Glennallen (CDP)	408
Valdez city	1,857
Whittier city	233
WADE HAMPTON CENSUS AREA	5,467
Emmonak city	407
Mountain Village city	1,219
WRANGELL-PETERSBURG CENSUS AREA	3,166
Petersburg city	1,320
Port Alexander city	160
Wrangell city	2,452
YUKON-KOYUKUK CENSUS AREA	3,105
Anderson city	69
Central (CDP)	150
Chalkyitsik (CDP)	60
Fort Yukon city	612
Galena city	795
Healy (CDP)	293

Source: National Planning Data Corporation, Ithaca, NY
Urban Decision Systems, Los Angeles, CA

Notes: Calculation of the population per church ratio is facilitated by adding one church to each place: The result is the ratio which would be attained if one new church was added in each place.

TABLE 4

**BOROUGH, CENSUS AREAS, AND PLACES IN ALASKA
SORTED BY POPULATION PER CHURCH,
1989**

Boroughs and Census Areas	1988/89
Place Names	Est Pop Per Church +1
ALASKA	9,305
BETHEL CENSUS AREA	12,733
ANCHORAGE BOROUGH	11,150
ALEUTIAN ISLANDS CENSUS AREA	8,278
NOME CENSUS AREA	7,704
JUNEAU BOROUGH	6,598
KODIAK ISLAND BOROUGH	6,444
FAIRBANKS NORTH STAR BOROUGH	6,322
KENAI PENINSULA BOROUGH	6,069
DILLINGHAM CENSUS AREA	5,937
PRINCE OF WALES-OUTER KETCHIKAN	5,511
WADE HAMPTON CENSUS AREA	5,467
MATANUSKA-SUSITNA BOROUGH	5,429
NORTH SLOPE BOROUGH	5,302
SITKA BOROUGH	3,765
KETCHIKAN GATEWAY BOROUGH	3,688
SKAGWAY-YAKUTAT-ANGOON CENSUS AREA	3,577
SOUTHEAST FAIRBANKS CENSUS AREA	3,174
WRANGELL-PETERSBURG CENSUS AREA	3,166
YUKON-KOYUKUK CENSUS AREA	3,105
KOBUK CENSUS AREA	3,031
VALDEZ-CORDOVA CENSUS AREA	2,843
HAINES BOROUGH	1,641
BRISTOL BAY BOROUGH	1,297

Table 4--continued

Boroughs and Census Areas	1988/89
Place Names	Est Pop Per Church +1
Anchorage city	11,150
Juneau city	6,598
Eielson AFB (CDP)	6,438
College (CDP)	5,901
Fairbanks city	4,315
Sitka city	3,764
Bethel city	3,399
Ketchikan city	2,959
Kodiak city	2,902
Nome city	2,834
Sterling (CDP)	2,686
Big Lake (CDP)	2,649
Barrow city	2,563
Wrangell city	2,452
Seward city	2,286
Kodiak Station (CDP)	2,285
Dillingham city	2,026
Cordova city	2,022
Valdez city	1,857
Kenai city	1,796
Kasilof (CDP)	1,675
Sand Point city	1,651
Akolmiut city	1,598
Palmer city	1,530
North Tongass Highway (CDP)	1,477
Unalaska city	1,444
Niniilchik (CDP)	1,340
Petersburg city	1,320
Wasilla city	1,311
Fort Greely (CDP)	1,233

Table 4--continued

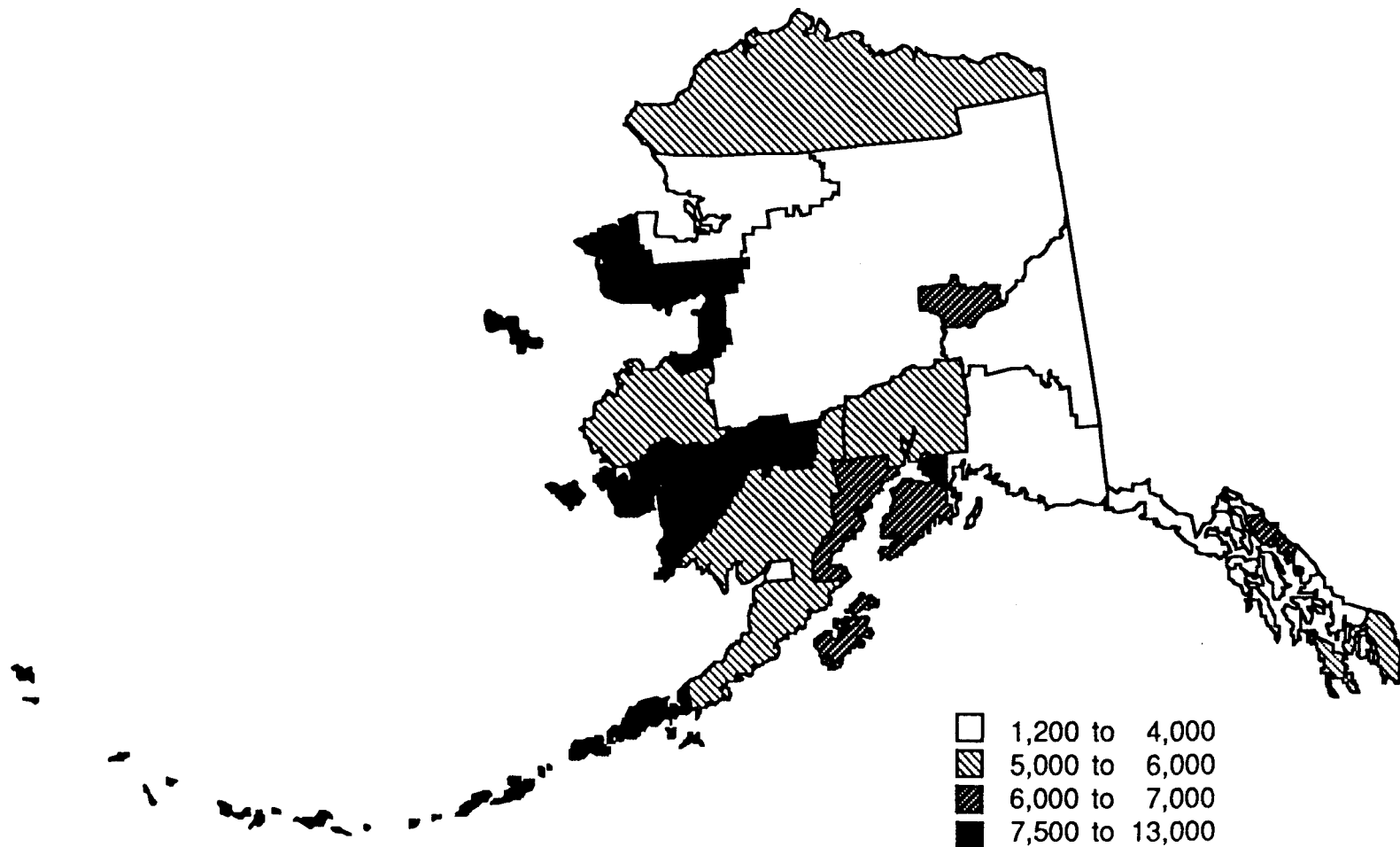
Boroughs and Census Areas	1988/89
Place Names	Est Pop Per Church +1
Mountain Village city	1,219
Talkeetna (CDP)	1,178
St. Paul city	1,173
Cold Bay (CDP)	1,170
Kotzebue city	1,152
Soldotna city	1,130
Nikishka (CDP)	1,106
Adak Station (CDP)	1,103
Tok (CDP)	1,076
Metlakatla (CDP)	1,006
Kipnuk (CDP)	972
Craig city	969
Haines city	946
Houston city	924
Sutton (CDP)	913
Yakutat city	868
Homer city	816
Seldovia city	804
Galena city	795
King Salmon (CDP)	659
Fort Yukon city	612
Bodenburg Butte (CDP)	596
Skagway city	572
Delta Junction city	514
Kiana city	508
Thorne Bay (CDP)	461
Ambler city	414
Salcha (CDP)	413
Glennallen (CDP)	408
Emmonak city	407

Table 4--continued

Boroughs and Census Areas	1988/89
Place Names	Est Pop Per Church +1
Selawik city	351
Moose Pass (CDP)	346
Healy (CDP)	293
North Pole city	289
Moose Creek (CDP)	265
Whittier city	233
Pelican city	210
Coffman Cove (CDP)	206
Willow (CDP)	189
Port Alexander city	160
Kobuk city	159
Shungnak city	153
Central (CDP)	150
Tenakee Springs city	120
Northway (CDP)	87
Teflin (CDP)	83
Ekwok city	78
Akhiok city	76
Anderson city	69
Copper Center (CDP)	63
Chalkyitsik (CDP)	60
Elfin Cove (CDP)	51
Chitina (CDP)	51

Sources: National Planning Data Corporation, Ithaca, NY
 Urban Decision Systems, Los Angeles, CA
 Alaska Baptist Convention, Anchorage, AK

POPULATION PER SOUTHERN BAPTIST CHURCH, 1989



Source: National Planning Data Corporation, Ithaca, N.Y. and Alaska Baptist Convention, Anchorage, Ak.
Fig. 9--Population Per Southern Baptist Church in Alaska by Borough and Census Area, 1989.

TABLE 5

**RESIDENT MEMBERSHIP AND POPULATION PER
RESIDENT MEMBER FOR ALASKA BY PLACE, 1988/89**

Boroughs and Census Areas Places	1988 Resident Members	1988/89 Est Pop Per Res Mem +1
ALASKA	11,130	48
ALEUTIAN ISLANDS CENSUS AREA	0	8,278
Adak Station (CDP)	0	1,103
Cold Bay (CDP)	0	1,170
St. Paul city	0	1,173
Sand Point city	0	1,651
Unalaska city	0	1,444
ANCHORAGE BOROUGH	6,257	36
Anchorage city	6,257	36
BETHEL CENSUS AREA	0	12,733
Akolmiut city	0	1,598
Bethel city	0	3,399
Kipnuk (CDP)	0	972
BRISTOL BAY BOROUGH	0	1,297
King Salmon (CDP)	0	659
DILLINGHAM CENSUS AREA	0	5,937
Dillingham city	0	2,026
Ekwok city	0	78
FAIRBANKS NORTH STAR BOROUGH	1,987	35
College (CDP)	0	5,901
Eielson AFB (CDP)	0	6,438
Fairbanks city	1,345	22
Moose Creek (CDP)	140	4
North Pole city	407	2
Salcha (CDP)	95	9
HAINES BOROUGH	0	1,641
Haines city	0	946

Table 5--continued

Boroughs and Census Areas Places	1988 Resident Members	1988/89 Est Pop Per Res Mem +1
JUNEAU BOROUGH	275	96
Juneau city	275	96
KENAI PENINSULA BOROUGH	642	66
Homer city	113	14
Kasilof (CDP)	0	1,675
Kenai city	310	17
Moose Pass (CDP)	3	86
Nikishka (CDP)	53	20
Ninilchik (CDP)	0	1,340
Seldovia city	0	804
Seward city	19	229
Soldotna city	144	23
Sterling (CDP)	0	2,686
KETCHIKAN GATEWAY BOROUGH	151	73
Ketchikan city	151	39
North Tongass Highway (CDP)	0	2,954
KOBUK CENSUS AREA	83	72
Ambler city	9	41
Kiana city	7	64
Kobuk city	10	14
Kotzebue city	39	58
Selawik city	9	35
Shungnak city	9	15
KODIAK ISLAND BOROUGH	44	286
Akhiok city	0	76
Kodiak city	44	129
Kodiak Station (CDP)	0	2,285

Table 5--continued

Boroughs and Census Areas Places	1988 Resident Members	1988/89 Est Pop Per Res Mem +1
MATANUSKA-SUSITNA BOROUGH	728	60
Big Lake (CDP)	173	30
Bodenburg Butte (CDP)	26	44
Houston city	0	924
Palmer city	210	15
Sutton (CDP)	20	43
Talkeetna (CDP)	0	1,178
Wasilla city	216	18
Willow (CDP)	83	7
NOME CENSUS AREA	18	405
Nome city	18	149
NORTH SLOPE BOROUGH	0	5,302
Barrow city	0	2,563
PRINCE OF WALES-OUTER KETCHIKAN	0	5,511
Coffman Cove (CDP)	0	206
Craig city	0	969
Metlakatla (CDP)	0	1,006
Thorne Bay (CDP)	0	461
SITKA BOROUGH	142	53
Sitka city	142	53
SKAGWAY-YAKUTAT-ANGOON CENSUS AREA	0	3,577
Elfin Cove (CDP)	0	51
Pelican city	0	210
Skagway city	0	572
Tenakee Springs city	0	120
Yakutat city	0	868
SOUTHEAST FAIRBANKS CENSUS AREA	443	14
Delta Junction city	363	3
Fort Greely (CDP)	0	1,233
Northway (CDP)	0	87
Teflin (CDP)	0	83
Tok (CDP)	80	13

Table 5--continued

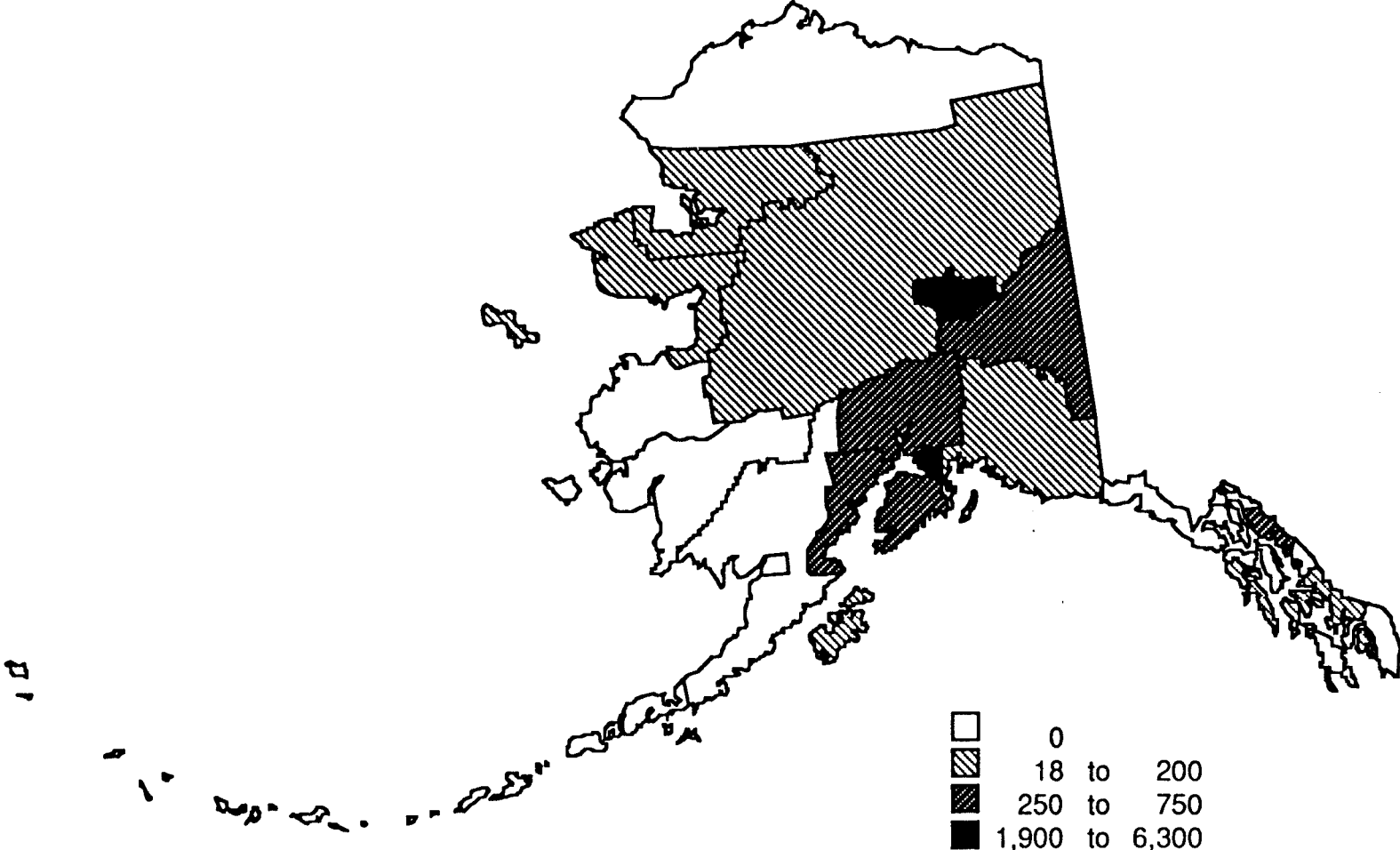
Boroughs and Census Areas Places	1988 Resident Members	1988/89 Est Pop Per Res Mem +1
VALDEZ-CORDOVA CENSUS AREA	188	45
Chitina (CDP)	0	51
Copper Center (CDP)	35	3
Cordova city	0	2,022
Glennallen (CDP)	3	102
Valdez city	138	27
Whittier city	12	18
WADE HAMPTON CENSUS AREA	0	5,467
Emmonak city	0	407
Mountain Village city	0	1,219
WRANGELL-PETERSBURG CENSUS AREA	122	51
Petersburg city	122	21
Port Alexander city	0	160
Wrangell city	0	2,452
YUKON-KOYUKUK CENSUS AREA	50	183
Anderson city	18	7
Central (CDP)	0	150
Chalkyitsik (CDP)	0	60
Fort Yukon city	4	122
Galena city	0	795
Healy (CDP)	28	20

Sources: National Planning Data Corporation, Ithaca, NY
 Urban Decision Systems
 Research Services Division, Sunday School Board, SBC, Nashville, TN

Notes: Resident members are allocated geographically according to the location of the church or mission to which they belong.

Calculation of the population per resident member ratio was facilitated by adding one to the number of resident members, thereby avoiding dividing by zero.

SOUTHERN BAPTIST RESIDENT MEMBERS, 1988



Source: Research Services Department, Sunday School Board, SBC, Nashville, Tn.

Fig. 10--Distribution of Southern Baptist Resident Members in Alaska by Borough and Census Area, 1988.

TABLE 6

**BOROUGHES, CENSUS AREAS, AND PLACES IN ALASKA
SORTED BY POPULATION PER RESIDENT MEMBER,
1989**

Boroughs and Census Areas Place Names	1988/89 Est Pop Per Res Mem +1
ALASKA	48
BETHEL CENSUS AREA	12,733
ALEUTIAN ISLANDS CENSUS AREA	8,278
DILLINGHAM CENSUS AREA	5,937
PRINCE OF WALES-OUTER KETCHIKAN	5,511
WADE HAMPTON CENSUS AREA	5,467
NORTH SLOPE BOROUGH	5,302
SKAGWAY-YAKUTAT-ANGOON CENSUS AREA	3,577
HAINES BOROUGH	1,641
BRISTOL BAY BOROUGH	1,297
NOME CENSUS AREA	405
KODIAK ISLAND BOROUGH	286
YUKON-KOYUKUK CENSUS AREA	183
JUNEAU BOROUGH	96
KETCHIKAN GATEWAY BOROUGH	73
KOBUK CENSUS AREA	72
KENAI PENINSULA BOROUGH	66
MATANUSKA-SUSITNA BOROUGH	60
SITKA BOROUGH	53
WRANGELL-PETERSBURG CENSUS AREA	51
VALDEZ-CORDOVA CENSUS AREA	45
ANCHORAGE BOROUGH	36
FAIRBANKS NORTH STAR BOROUGH	35
SOUTHEAST FAIRBANKS CENSUS AREA	14

Table 6--continued

Boroughs and Census Areas Place names	1988/89 Est Pop Per Res Mem +1
Eielson AFB (CDP)	6,438
College (CDP)	5,901
Bethel city	3,399
North Tongass Highway (CDP)	2,954
Sterling (CDP)	2,686
Barrow city	2,563
Wrangell city	2,452
Kodiak Station (CDP)	2,285
Dillingham city	2,026
Cordova city	2,022
Kasilof (CDP)	1,675
Sand Point city	1,651
Akolmiut city	1,598
Unalaska city	1,444
Ninilchik (CDP)	1,340
Fort Greely (CDP)	1,233
Mountain Village city	1,219
Talkeetna (CDP)	1,178
St. Paul city	1,173
Cold Bay (CDP)	1,170
Adak Station (CDP)	1,103
Metlakatla (CDP)	1,006
Kipnuk (CDP)	972
Craig city	969
Haines city	946
Houston city	924
Yakutat city	868
Seldovia city	804
Galena city	795
King Salmon (CDP)	659

Table 6--continued

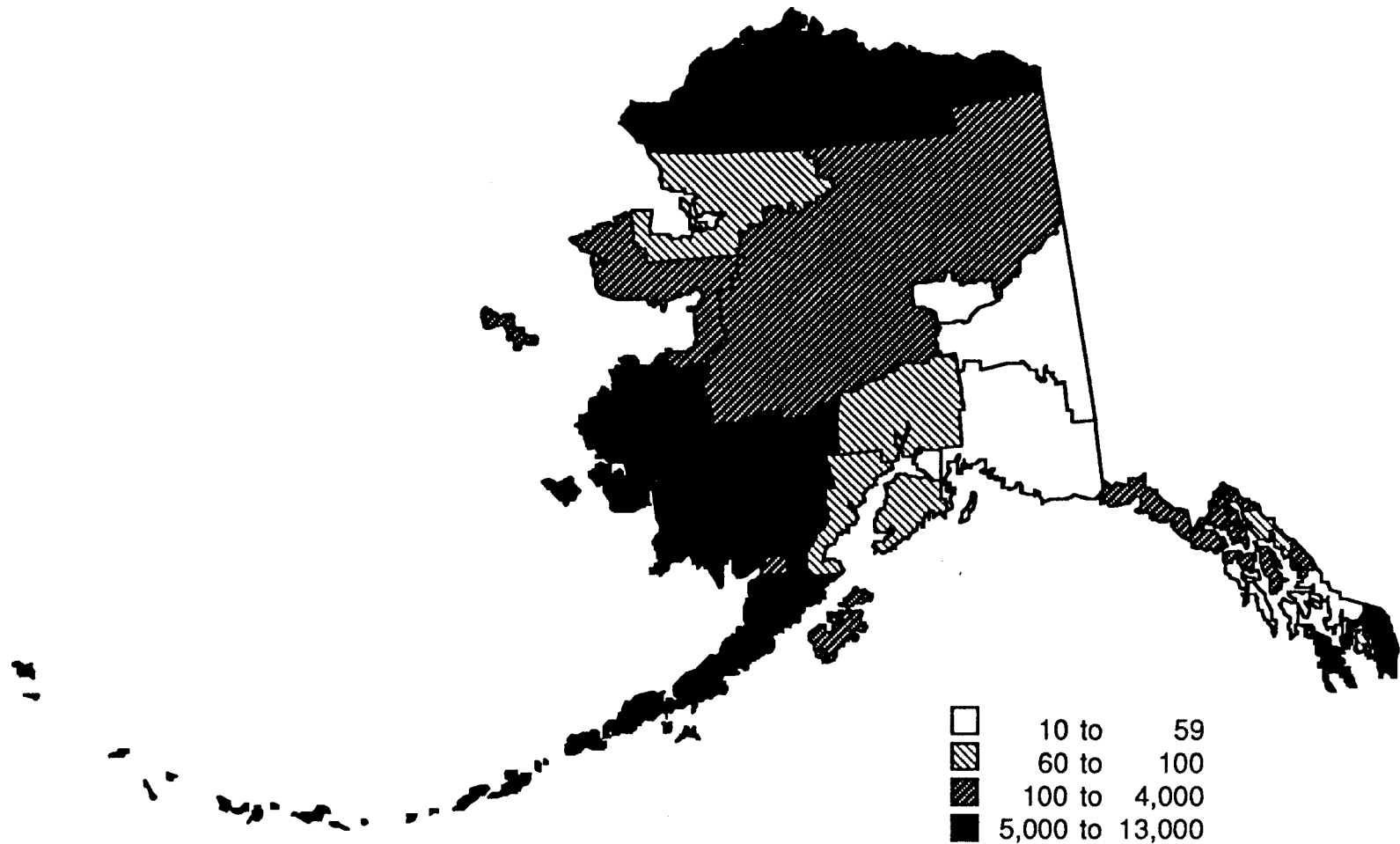
Boroughs and Census Areas Place names	1988/89 Est Pop Per Res Mem +1
Skagway city	572
Thorne Bay (CDP)	461
Emmonak city	407
Seward city	229
Pelican city	210
Coffman Cove (CDP)	206
Port Alexander city	160
Central (CDP)	150
Nome city	149
Kodiak city	129
Fort Yukon city	122
Tenakee Springs city	120
Glennallen (CDP)	102
Juneau city	96
Northway (CDP)	87
Moose Pass (CDP)	86
Teflin (CDP)	83
Ekwok city	78
Akhiok city	76
Kiana city	64
Chalkyitsik (CDP)	60
Kotzebue city	58
Sitka city	53
Elfin Cove (CDP)	51
Chitina (CDP)	51
Bodenburg Butte (CDP)	44
Sutton (CDP)	43
Ambler city	41
Ketchikan city	39
Anchorage city	36

Table 6--continued

Boroughs and Census Areas Place names	1988/89 Est Pop Per Res Mem +1
Selawik city	35
Big Lake (CDP)	30
Valdez city	27
Soldotna city	23
Fairbanks city	22
Petersburg city	21
Nikishka (CDP)	20
Healy (CDP)	20
Wasilla city	18
Whittier city	18
Kenai city	17
Shungnak city	15
Palmer city	15
Kobuk city	14
Homer city	14
Tok (CDP)	13
Salcha (CDP)	9
Anderson city	7
Willow (CDP)	7
Moose Creek (CDP)	4
Copper Center (CDP)	3
Delta Junction city	3
North Pole city	2

Sources: National Planning Data Corporation, Ithaca, NY
 Urban Decision Systems, Los Angeles, CA
 Research Services Division, Sunday School Board, SBC, Nashville, TN
 Alaska Baptist Convention, Anchorage, AK

POPULATION PER SOUTHERN BAPTIST RESIDENT MEMBER, 1988/89



Source: National Planning Data Corporation, Ithaca, N.Y. and Research Services Department, Sunday School Board, SBC, Nashville, Tn.
Fig. 11--Population Per Southern Baptist Resident Member in Alaska by Borough and Census Area, 1988/89.

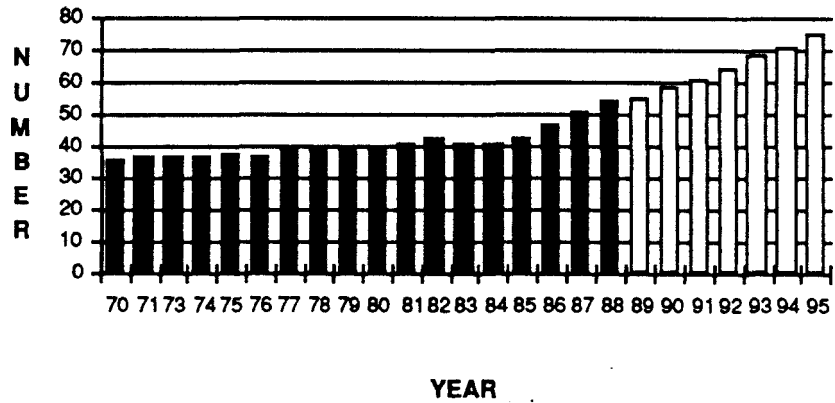
TABLE 7

**POPULATION AND INFLATION, NUMBER OF
CHURCHES, MISSIONS, AND MISSIONS STARTED FOR ALASKA
BY YEAR, 1970 TO 1988, WITH PROJECTIONS TO 1995**

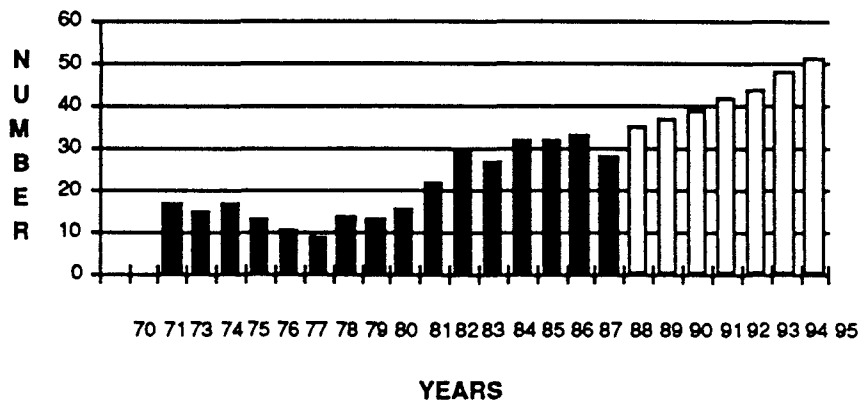
Year	Population	Anchorage Inflation	Churches	Missions Operating	Missions Started
1970	303,000	3.8 %	36	NA	NA
1971	316,000	2.9	37	NA	NA
1973	333,000	4.4	37	17	3
1974	344,000	10.8	37	15	4
1975	370,000	13.7	38	17	4
1976	392,000	7.7	37	13	2
1977	396,000	6.7	39	11	2
1978	401,000	7	40	9	1
1979	402,000	10.5	40	14	3
1980	402,000	10.2	40	13	4
1981	415,000	8.1	41	16	7
1982	446,000	5.4	43	22	2
1983	483,000	1.8	41	30	6
1984	505,000	4.1	41	27	6
1985	522,000	2.4	43	32	6
1986	534,000	1.9	47	32	3
1987	524,000	0.4	51	33	4
1988	524,000	0.4	54	28	5
1989	530,000	NA	55	35	5
1990	535,000	NA	58	37	6
1991	541,000	NA	61	39	6
1992	547,000	NA	64	42	6
1993	552,000	NA	68	44	6
1994	558,000	NA	71	48	7
1995	564,000	NA	75	51	7

Sources: Bureau of the Census, Washington, DC
 Bureau of Labor Statistics, Atlanta, GA
 Research Services Department, Sunday School Board, SBC, Nashville, TN

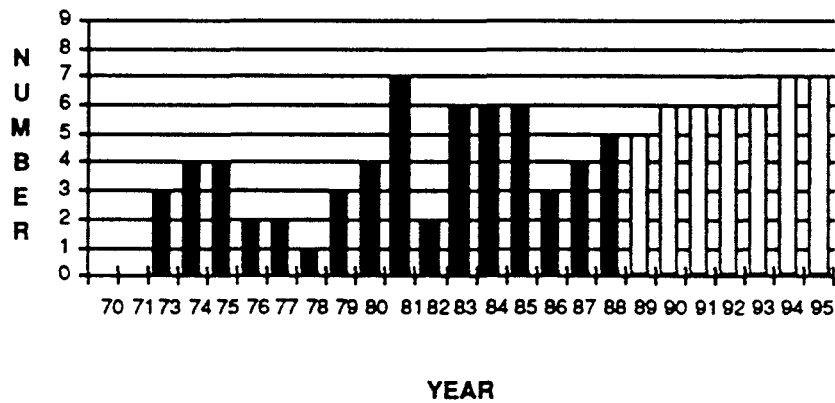
CHURCHES



MISSIONS OPERATING



MISSIONS STARTED



Source: Research Services Department, Sunday School Board, SBC, Nashville, Tn.

Fig. 12--Churches, Missions Operating, and Missions Started by Year, 1970 to 1988, With Projections to 1995.

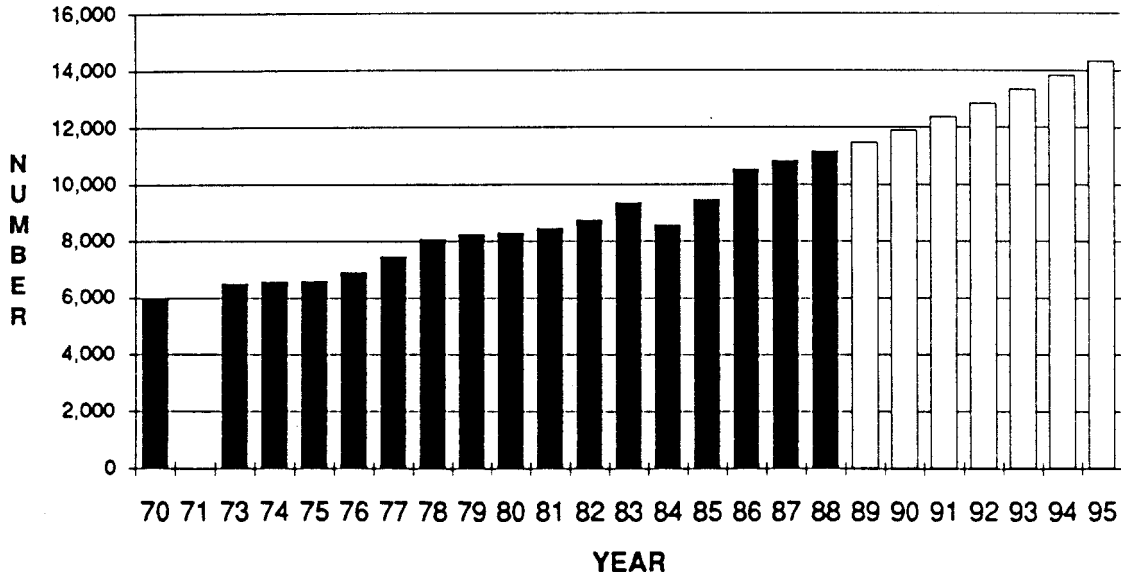
TABLE 8

**TOTAL AND RESIDENT MEMBERS, SUNDAY SCHOOL ENROLLMENT
AND ATTENDANCE, AND ATTENDANCE AS A PERCENTAGE
OF ENROLLMENT FOR ALASKA BY YEAR, 1970 TO 1988,
WITH PROJECTIONS TO 1995**

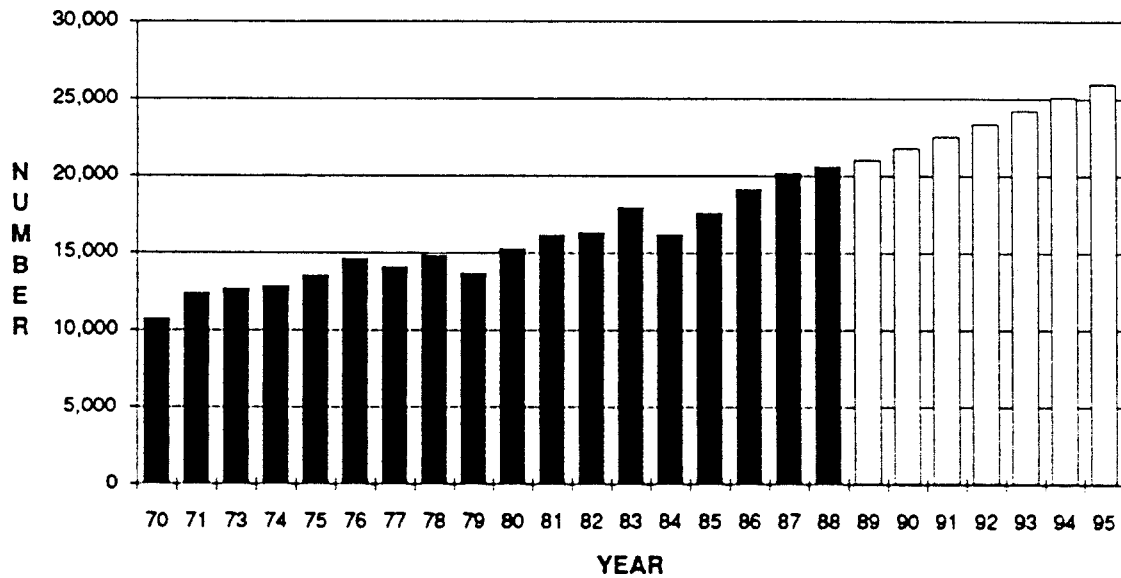
Year	Total Members	Resident Members	Sunday School Enrollment	Sunday School Attendance	Percent of S. S. Enroll. Attending
1970	10,740	6,004	7,305	NA	NA
1971	12,404	NA	7,468	3,671	NA
1973	12,699	6,509	6,955	3,574	51.4 %
1974	12,842	6,580	6,639	3,175	47.8
1975	13,562	6,611	6,553	3,364	51.3
1976	14,597	6,910	6,648	3,460	52.0
1977	14,076	7,475	7,257	3,516	48.4
1978	14,837	8,071	7,122	3,706	52.0
1979	13,696	8,257	7,417	3,783	51.0
1980	15,282	8,292	6,883	3,605	52.4
1981	16,130	8,454	6,765	3,475	51.4
1982	16,288	8,744	7,521	3,732	49.6
1983	17,940	9,355	7,685	4,084	53.1
1984	16,187	8,556	7,460	3,611	48.4
1985	17,573	9,453	7,804	3,881	49.7
1986	19,142	10,541	8,651	4,321	49.9
1987	20,189	10,826	8,627	4,229	49.0
1988	20,591	11,165	8,904	4,273	48.0
1989	21,020	11,457	9,317	4,475	48.0
1990	21,776	11,898	9,715	4,620	47.6
1991	22,557	12,355	10,142	4,775	47.1
1992	23,366	12,826	10,599	4,940	46.6
1993	24,200	13,313	11,086	5,114	46.1
1994	25,061	13,815	11,603	5,298	45.7
1995	25,948	14,332	12,148	5,492	45.2

Source: Research Services Department, Sunday School Board, SBC, Nashville, TN

RESIDENT MEMBERS



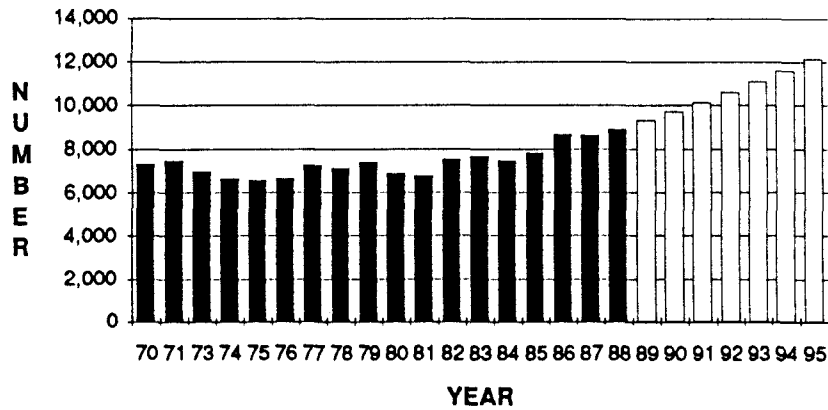
TOTAL MEMBERS



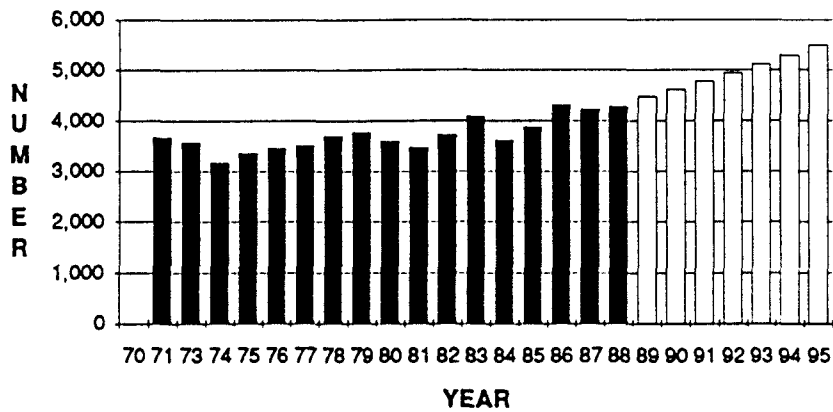
Source: Research Services Department, Sunday School Board, SBC, Nashville, Tn.

Fig. 13--Total Members and Resident Members by Year, 1970 to 1988, With Projections to 1995.

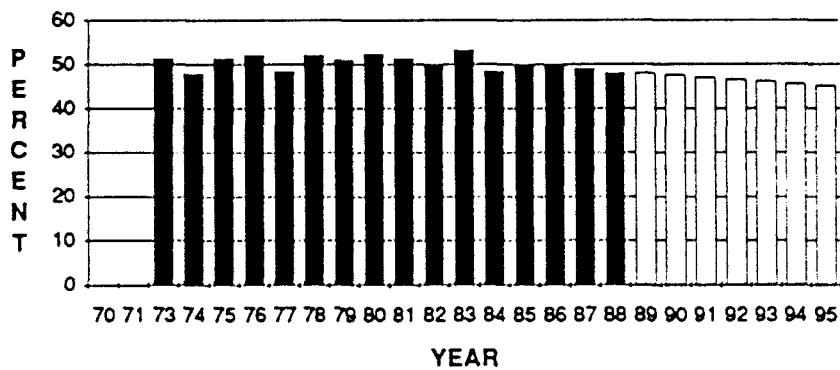
SUNDAY SCHOOL ENROLLMENT



SUNDAY SCHOOL ATTENDANCE



PERCENTAGE OF SUNDAY SCHOOL ENROLLMENT ATTENDING



Source: Research Services Department, Sunday School Board, SBC, Nashville, Tn.

Fig. 14--Sunday School Enrollment, Sunday School Attendance, and Percentage of Sunday School Enrollment Attending by Year, 1970 to 1988, With Projections to 1995.

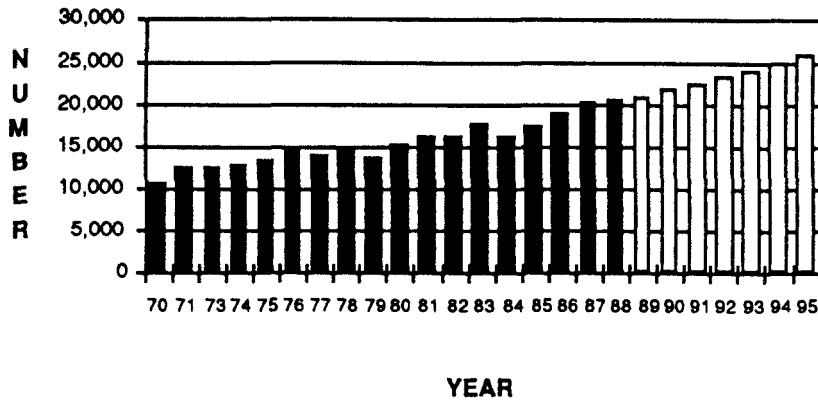
TABLE 9

**BAPTISMS, BAPTISMAL RATE PER 100 RESIDENT MEMBERS,
AND OTHER ADDITIONS TO CHURCHES FOR ALASKA BY YEAR,
1970 TO 1988, WITH PROJECTIONS TO 1995**

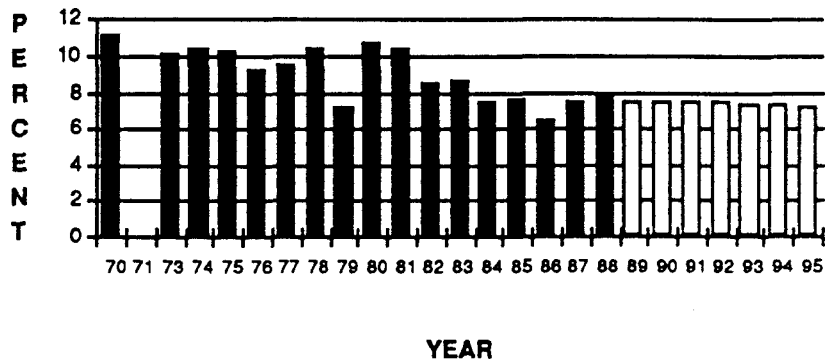
Year	Baptisms	Baptism Rate Per 100 Res Members	Other Additions
1970	674	11.2	NA
1971	832	NA	1,346
1973	656	10.1	906
1974	684	10.4	936
1975	679	10.3	1,012
1976	645	9.3	955
1977	718	9.6	1,018
1978	837	10.4	1,136
1979	597	7.2	927
1980	894	10.8	1,025
1981	878	10.4	1,071
1982	742	8.5	1,041
1983	808	8.6	1,234
1984	636	7.4	927
1985	718	7.6	1,025
1986	676	6.4	1,042
1987	814	7.5	1,100
1988	886	7.9	938
1989	863	7.5	1,075
1990	895	7.5	1,092
1991	923	7.5	1,110
1992	952	7.4	1,131
1993	984	7.4	1,153
1994	1,012	7.3	1,178
1995	1,041	7.3	1,204

Source: Research Services Department, Sunday School Board, SBC, Nashville, TN

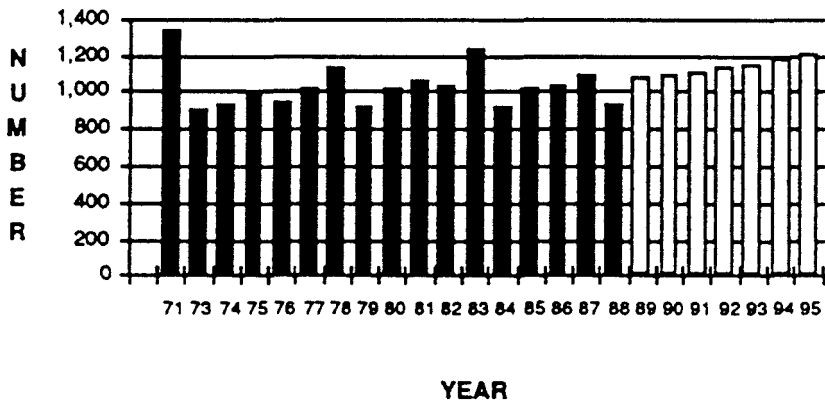
BAPTISMS



BAPTISM RATE PER 100 RESIDENT MEMBERS



OTHER ADDITIONS



Source: Research Services Department, Sunday School Board, SBC, Nashville, Tn.

Fig. 15--Baptisms, Baptism Rate Per 100 Resident Members, and Other Additdon by Year, 1970 to 1988, With Projections to 1995.

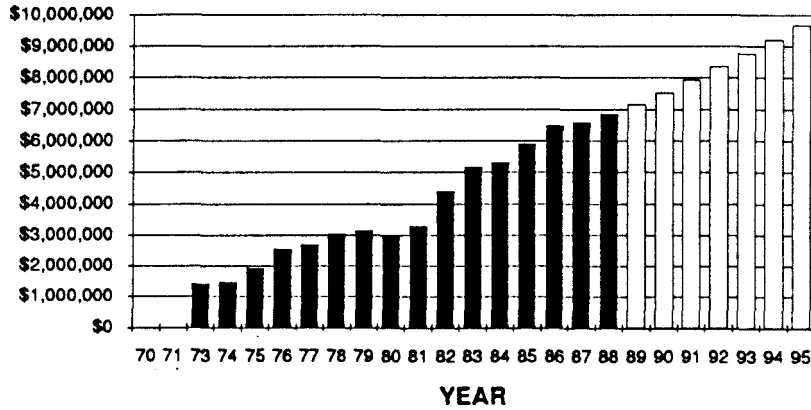
TABLE 10

TOTAL GIFTS, TOTAL MISSIONS EXPENDITURES, AND MISSIONS EXPENDITURES AS A PERCENTAGE OF TOTAL GIFTS. TOTAL COOPERATIVE PROGRAM RECEIPTS AND COOPERATIVE PROGRAM RECEIPTS AS A PERCENTAGE OF TOTAL GIFTS, AND COOPERATIVE PROGRAM RECEIPTS SENT TO THE EXECUTIVE COMMITTEE FOR ALASKA BY YEAR, 1970 TO 1988, WITH PROJECTIONS TO 1995.

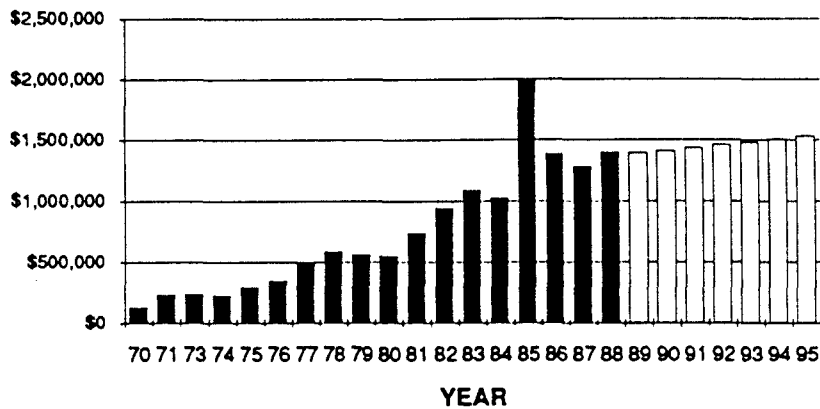
Year	Total Gifts	Total Missions Expenditures	Tot Mssns Expend as Percent of Tot Gifts	Total Cooperative Program Receipts	Total CP as Percent of Tot Gifts	Coop Pgm Sent to Exec Comm
1970	NA	\$129,389	NA	\$84,749	NA	\$24,660
1971	NA	231,577	NA	94,892	NA	27,024
1973	\$1,413,394	236,149	16.7 %	93,676	6.6 %	27,074
1974	1,478,018	225,593	15.3	115,849	7.8	24,928
1975	1,914,350	294,186	15.4	148,496	7.8	42,472
1976	2,556,671	345,782	13.5	187,042	7.3	51,071
1977	2,696,808	486,161	18.0	208,478	7.7	59,098
1978	3,037,188	588,481	19.4	219,390	7.2	63,454
1979	3,129,627	561,279	17.9	256,333	8.2	64,847
1980	2,934,171	555,597	18.9	268,922	9.2	69,524
1981	3,284,635	741,466	22.6	326,893	10.0	83,721
1982	4,393,910	942,931	21.5	358,715	8.2	111,962
1983	5,166,810	1,085,563	21.0	305,673	5.9	121,155
1984	5,315,030	1,025,296	19.3	416,693	7.8	117,951
1985	5,893,615	2,007,086	34.1	466,173	7.9	122,677
1986	6,483,645	1,381,861	21.3	460,112	7.1	134,055
1987	6,581,760	1,276,376	19.4	420,068	6.4	130,044
1988	6,845,465	1,395,072	20.4	450,992	6.6	144,863
1989	7,161,589	1,390,159	19.4	501,025	7.0	144,162
1990	7,530,586	1,408,726	18.7	524,929	7.0	149,150
1991	7,931,542	1,435,101	18.1	548,832	6.9	154,431
1992	8,347,602	1,461,476	17.5	572,736	6.9	159,711
1993	8,761,911	1,480,043	16.9	596,640	6.8	164,699
1994	9,208,178	1,506,418	16.4	620,543	6.7	169,980
1995	9,669,550	1,532,794	15.9	644,447	6.7	175,261

Source: Research Services Department, Sunday School Board, SBC, Nashville, TN

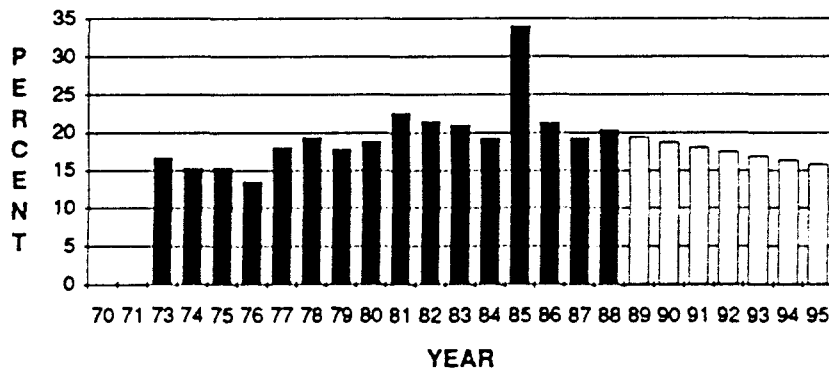
TOTAL GIFTS



TOTAL MISSIONS EXPENDITURES



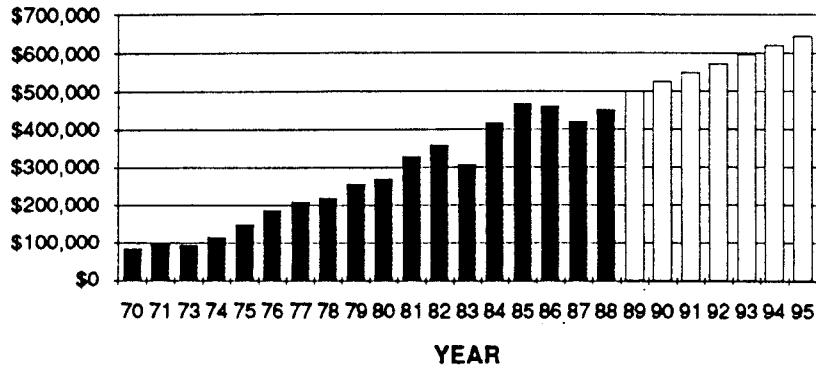
TOTAL MISSIONS EXPENDITURES AS A PERCENT OF TOTAL GIFTS



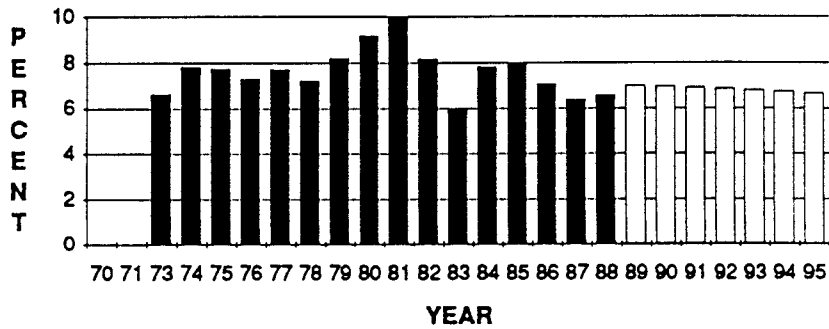
Source: Research Services Department, Sunday School Board, SBC, Nashville, Tn.

Fig. 16--Total Gifts, Total Missions Expenditures, and Total Missions Expenditures as a Percent of Total Gifts by Year, 1970 to 1988, With Projections to 1995.

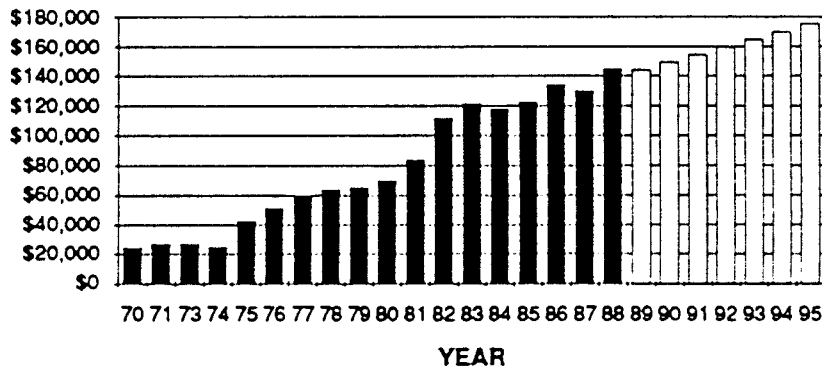
TOTAL COOPERATIVE PROGRAM RECEIPTS



TOTAL COOPERATIVE PROGRAM RECEIPTS AS A PERCENT OF TOTAL GIFTS



COOPERATIVE PROGRAM SENT TO THE EXECUTIVE COMMITTEE



Source: Research Services Department, Sunday School Board, SBC, Nashville, Tn.
 Fig. 17--Cooperative Program Information by Year, 1970 to 1988, With Projections to 1995.

There are 295 places in Alaska.

There are 53 places in Alaska that have at least 750 population.

Southern Baptist work is in 58 places.

30 of these places have less than 750 population.

28 of these places have at least 750 population.

Note there are 25 places in Alaska with at least 750 population that have no Southern Baptist work.

TABLE 3

**ESTIMATED POPULATION PER CHURCH
FOR ALASKA BY PLACE, 1989**

Boroughs and Census Areas Places	1989 Estimated Population	Churches Missions and Preaching Points	1989 Est Pop Per Church +1
ALASKA	530,370	56,26,23	9,305
ALEUTIAN ISLANDS CENSUS AREA	8,278	0,0,0	8,278
Adak Station (CDP)	1,103	0,0,0	1,103
Cold Bay (CDP)	1,170	0,0,0	1,170
St. Paul city	1,173	0,0,0	1,173
Sand Point city	1,651	0,0,0	1,651
Unalaska city	1,444	0,0,0	1,444
ANCHORAGE BOROUGH	223,003	19,2,2	11,150
Anchorage city	223,003	19,2,2	11,150
BETHEL CENSUS AREA	12,733	0,0,0	12,733
Akolmiut city	1,598	0,0,0	1,598
Bethel city	3,399	0,0,0	3,399
Kipnuk (CDP)	972	0,0,0	972
BRISTOL BAY BOROUGH	1,297	0,1,0	1,297
King Salmon (CDP)	659	0,1,0	659
DILLINGHAM CENSUS AREA	5,937	0,0,1	5,937
Dillingham city	2,026	0,0,0	2,026
Ekwok city	78	0,0,1	78
FAIRBANKS NORTH STAR BOROUGH	69,546	10,2,0	6,322
College (CDP)	5,901	0,0,0	5,901
Eielson AFB (CDP)	6,438	0,0,0	6,438
Fairbanks city	30,208	6,2,0	4,315
Moose Creek (CDP)	530	1,0,0	265
North Pole city	867	2,0,0	289
Salcha (CDP)	826	1,0,0	413
HAINES BOROUGH	1,641	0,0,1	1,641
Haines city	946	0,0,1	946

Table 3--continued

Boroughs and Census Areas Places	1989 Estimated Population	Churches and Missions Preaching Points	1989 Est Pop Per Church +1
JUNEAU BOROUGH	26,391	3,0,2	6,598
Juneau city	26,391	3,0,2	6,598
KENAI PENINSULA BOROUGH	42,483	6,2,1	6,069
Homer city	1,632	1,0,0	816
Kasilof (CDP)	1,675	0,0,0	1,675
Kenai city	5,387	2,0,0	1,796
Moose Pass (CDP)	346	0,1,0	346
Nikishka (CDP)	1,106	0,1,0	1,106
Ninilchik (CDP)	1,340	0,0,0	1,340
Seldovia city	804	0,0,1	804
Seward city	4,571	1,0,0	2,286
Soldotna city	3,390	2,0,0	1,130
Sterling (CDP)	2,686	0,0,0	2,686
KETCHIKAN GATEWAY BOROUGH	11,063	2,0,0	3,688
Ketchikan city	5,919	1,0,0	2,959
North Tongass Highway (CDP)	2,954	1,0,0	1,477
KOBUK CENSUS AREA	6,062	1,5,0	3,031
Ambler city	414	0,1,0	414
Kiana city	508	0,1,0	508
Kobuk city	159	0,1,0	159
Kotzebue city	2,303	1,0,0	1,152
Selawik city	351	0,1,0	351
Shungnak city	153	0,1,0	153
KODIAK ISLAND BOROUGH	12,888	1,0,3	6,444
Akhiok city	76	0,0,1	76
Kodiak city	5,804	1,0,2	2,902
Kodiak Station (CDP)	2,285	0,0,0	2,285

Table 3--continued

Boroughs and Census Areas Places	1989 Estimated Population	Churches and Missions Preaching Points	1989 Est Pop Per Church +1
MATANUSKA-SUSITNA BOROUGH	43,434	7,3,2	5,429
Big Lake (CDP)	5,298	1,0,0	2,649
Bodenburg Butte (CDP)	1,191	1,0,0	596
Houston city	924	0,0,0	924
Palmer city	3,060	1,0,1	1,530
Sutton (CDP)	913	0,1,0	913
Talkeetna (CDP)	1,178	0,0,0	1,178
Wasilla city	3,932	2,1,0	1,311
Willow (CDP)	568	2,1,1	189
NOME CENSUS AREA	7,704	0,1,1	7,704
Nome city	2,834	0,1,1	2,834
NORTH SLOPE BOROUGH	5,302	0,0,0	5,302
Barrow city	2,563	0,0,0	2,563
PRINCE OF WALES-OUTER KETCHIKAN	5,511	0,1,2	5,511
Coffman Cove (CDP)	206	0,1,0	206
Craig city	969	0,0,0	969
Metlakatla (CDP)	1,006	0,0,0	1,006
Thorne Bay (CDP)	461	0,0,2	461
SITKA BOROUGH	7,530	1,0,0	3,765
Sitka city	7,528	1,0,0	3,764
SKAGWAY-YAKUTAT-ANGOON	3,577	0,2,2	3,577
Elfin Cove (CDP)	51	0,0,1	51
Pelican city	210	0,0,1	210
Skagway city	572	0,1,0	572
Tenakee Springs city	120	0,1,0	120
Yakutat city	868	0,0,0	868
SOUTHEAST FAIRBANKS CENSUS AREA	6,347	1,2,1	3,174
Delta Junction city	1,027	1,0,0	514
Fort Greely (CDP)	1,233	0,0,0	1,233
Northway (CDP)	87	0,1,0	87
Teflin (CDP)	83	0,0,1	83
Tok (CDP)	1,076	0,1,0	1,076

Table 3--continued

Boroughs and Census Areas Places	1989 Estimated Population	Churches Missions and Preaching Points	1989 Est Pop Per Church +1
VALDEZ-CORDOVA CENSUS AREA	8,529	2,3,1	2,843
Chitina (CDP)	51	0,1,1	51
Copper Center (CDP)	126	1,0,0	63
Cordova city	2,022	0,0,0	2,022
Glennallen (CDP)	408	0,1,0	408
Valdez city	3,713	1,0,0	1,857
Whittier city	233	0,1,0	233
WADE HAMPTON CENSUS AREA	5,467	0,1,1	5,467
Emmonak city	407	0,1,0	407
Mountain Village city	1,219	0,0,1	1,219
WRANGELL-PETERSBURG CENSUS AREA	6,331	1,0,1	3,166
Petersburg city	2,641	1,0,0	1,320
Port Alexander city	160	0,0,1	160
Wrangell city	2,452	0,0,0	2,452
YUKON-KOYUKUK CENSUS AREA	9,316	2,1,2	3,105
Anderson city	137	1,0,0	69
Central (CDP)	150	0,0,1	150
Chalkyitsik (CDP)	60	0,0,1	60
Fort Yukon city	612	0,1,0	612
Galena city	795	0,0,0	795
Healy (CDP)	586	1,0,0	293

Source: National Planning Data Corporation, Ithaca, NY
 Urban Decision Systems, Los Angeles, CA

Notes: Calculation of the population per church ratio is facilitated by adding one church to each place: The result is the ratio which would be attained if one new church was added in each place.

NEW TABLE 4

BOROUGHES, CENSUS AREAS, AND PLACES IN ALASKA
SORTED BY POPULATION PER CHURCH,
1989

Boroughs and Census Areas	1989	Churches	1988/89
Place Names	Estimated	Misions and	Est Pop Per
	Population	Preaching Points	Church +1
ALASKA	530,370	56,26,23	9,305
BETHEL CENSUS AREA	12,733	0,0,0	12,733
ANCHORAGE BOROUGH	223,003	19,2,2	11,150
ALEUTIAN ISLANDS CENSUS AREA	8,278	0,0,0	8,278
NOME CENSUS AREA	7,704	0,1,1	7,704
JUNEAU BOROUGH	26,391	3,0,2	6,598
KODIAK ISLAND BOROUGH	12,888	1,0,3	6,444
FAIRBANKS NORTH STAR BOROUGH	69,546	10,2,0	6,322
KENAI PENINSULA BOROUGH	42,483	6,2,1	6,069
DILLINGHAM CENSUS AREA	5,937	0,0,1	5,937
PRINCE OF WALES-OUTER KETCHIKAN	5,511	0,1,2	5,511
WADE HAMPTON CENSUS AREA	5,467	0,1,1	5,467
MATANUSKA-SUSITNA BOROUGH	43,434	7,3,2	5,429
NORTH SLOPE BOROUGH	5,302	0,0,0	5,302
SITKA BOROUGH	7,530	1,0,0	3,765
KETCHIKAN GATEWAY BOROUGH	11,063	2,0,0	3,688
SKAGWAY-YAKUTAT-ANGOON CENSUS ARE	3,577	0,2,2	3,577
SOUTHEAST FAIRBANKS CENSUS AREA	6,347	1,2,1	3,174
WRANGELL-PETERSBURG CENSUS AREA	6,331	1,0,1	3,166
YUKON-KOYUKUK CENSUS AREA	9,316	2,1,2	3,105
KOBUK CENSUS AREA	6,062	1,5,0	3,031
VALDEZ-CORDOVA CENSUS AREA	8,529	2,3,1	2,843
HAINES BOROUGH	1,641	0,0,1	1,641
BRISTOL BAY BOROUGH	1,297	0,1,0	1,297

New Table 4--continued

Boroughs and Census Areas	1989	Churches	1988/89
Place Names	Estimated	Missions and	Est Pop Per
	Population	Preaching Points	Church +1
Anchorage city	223,003	19,2,2	11,150
Juneau city	26,391	3,0,2	6,598
Eielson AFB (CDP)	6,438	0,0,0	6,438
College (CDP)	5,901	0,0,0	5,901
Fairbanks city	30,208	6,2,0	4,315
Sitka city	7,528	1,0,0	3,764
Bethel city	3,399	0,0,0	3,399
Ketchikan city	5,919	1,0,0	2,959
Kodiak city	5,804	1,0,2	2,902
Nome city	2,834	0,1,1	2,834
Sterling (CDP)	2,686	0,0,0	2,686
Big Lake (CDP)	5,298	1,0,0	2,649
Barrow city	2,563	0,0,0	2,563
Wrangell city	2,452	0,0,0	2,452
Seward city	4,571	1,0,0	2,286
Kodiak Station (CDP)	2,285	0,0,0	2,285
Dillingham city	2,026	0,0,0	2,026
Cordova city	2,022	0,0,0	2,022
Valdez city	3,713	1,0,0	1,857
Kenai city	5,387	2,0,0	1,796
Kasilof (CDP)	1,675	0,0,0	1,675
Sand Point city	1,651	0,0,0	1,651
Akolmiut city	1,598	0,0,0	1,598
Palmer city	3,060	1,0,1	1,530
North Tongass Highway (CDP)	2,954	1,0,0	1,477
Unalaska city	1,444	0,0,0	1,444
Ninilchik (CDP)	1,340	0,0,0	1,340
Petersburg city	2,641	1,0,0	1,320
Wasilla city	3,932	2,1,0	1,311
Fort Greely (CDP)	1,233	0,0,0	1,233

New Table 4--continued

Boroughs and Census Areas	1989	Churches	1988/89
Place Names	Estimated	Misions and	Est Pop Per
	Population	Preaching Points	Church +1
Mountain Village city	1,219	0,0,1	1,219
Talkeetna (CDP)	1,178	0,0,0	1,178
St. Paul city	1,173	0,0,0	1,173
Cold Bay (CDP)	1,170	0,0,0	1,170
Kotzebue city	2,303	1,0,0	1,152
Soldotna city	3,390	2,0,0	1,130
Nikishka (CDP)	1,106	0,1,0	1,106
Adak Station (CDP)	1,103	0,0,0	1,103
Tok (CDP)	1,076	0,1,0	1,076
Metlakatla (CDP)	1,006	0,0,0	1,006
Kipnuk (CDP)	972	0,0,0	972
Craig city	969	0,0,0	969
Haines city	946	0,0,1	946
Houston city	924	0,0,0	924
Sutton (CDP)	913	0,1,0	913
Yakutat city	868	0,0,0	868
Homer city	1,632	1,0,0	816
Seldovia city	804	0,0,1	804
Galena city	795	0,0,0	795
King Salmon (CDP)	659	0,1,0	659
Fort Yukon city	612	0,1,0	612
Bodenburg Butte (CDP)	1,191	1,0,0	596
Skagway city	572	0,1,0	572
Delta Junction city	1,027	1,0,0	514
Kiana city	508	0,1,0	508
Thorne Bay (CDP)	461	0,0,2	461
Ambler city	414	0,1,0	414
Salcha (CDP)	826	1,0,0	413
Glennallen (CDP)	408	0,1,0	408
Emmonak city	407	0,1,0	407

New Table 4--continued

Boroughs and Census Areas	1989	Churches	1988/89
Place Names	Estimated	Misions and	Est Pop Per
	Population	Preaching Points	Church +1
Selawik city	351	0,1,0	351
Moose Pass (CDP)	346	0,1,0	346
Healy (CDP)	586	1,0,0	293
North Pole city	867	2,0,0	289
Moose Creek (CDP)	530	1,0,0	265
Whittier city	233	0,1,0	233
Pelican city	210	0,0,1	210
Coffman Cove (CDP)	206	0,1,0	206
Willow (CDP)	568	2,1,1	189
Port Alexander city	160	0,0,1	160
Kobuk city	159	0,1,0	159
Shungnak city	153	0,1,0	153
Central (CDP)	150	0,0,1	150
Tenakee Springs city	120	0,1,0	120
Northway (CDP)	87	0,1,0	87
Teflin (CDP)	83	0,0,1	83
Ekwok city	78	0,0,1	78
Akhiok city	76	0,0,1	76
Anderson city	137	1,0,0	69
Copper Center (CDP)	126	1,0,0	63
Chalkyitsik (CDP)	60	0,0,1	60
Elfin Cove (CDP)	51	0,0,1	51
Chitina (CDP)	51	0,1,1	51

Sources: National Planning Data Corporation, Ithaca, NY
 Urban Decision Systems, Los Angeles, CA
 Alaska Baptist Convention, Anchorage, AK

TABLE 5

**RESIDENT MEMBERSHIP AND POPULATION PER
RESIDENT MEMBER FOR ALASKA BY PLACE, 1988/89**

Boroughs and Census Areas Places	1989 Estimated Population	1988 Resident Members	1988/89 Est Pop Per Res Mem +1
ALASKA	530,370	11,130	48
ALEUTIAN ISLANDS CENSUS AREA	8,278	0	8,278
Adak Station (CDP)	1,103	0	1,103
Cold Bay (CDP)	1,170	0	1,170
St. Paul city	1,173	0	1,173
Sand Point city	1,651	0	1,651
Unalaska city	1,444	0	1,444
ANCHORAGE BOROUGH	223,003	6,257	36
Anchorage city	223,003	6,257	36
BETHEL CENSUS AREA	12,733	0	12,733
Akolmiut city	1,598	0	1,598
Bethel city	3,399	0	3,399
Kipnuk (CDP)	972	0	972
BRISTOL BAY BOROUGH	1,297	0	1,297
King Salmon (CDP)	659	0	659
DILLINGHAM CENSUS AREA	5,937	0	5,937
Dillingham city	2,026	0	2,026
Ekwok city	78	0	78
FAIRBANKS NORTH STAR BOROUGH	69,546	1,987	35
College (CDP)	5,901	0	5,901
Eielson AFB (CDP)	6,438	0	6,438
Fairbanks city	30,208	1,345	22
Moose Creek (CDP)	530	140	4
North Pole city	867	407	2
Salcha (CDP)	826	95	9
HAINES BOROUGH	1,641	0	1,641
Haines city	946	0	946

Table 5--continued

Boroughs and Census Areas Places	1989 Estimated Population	1988 Resident Members	1988/89 Est Pop Per Res Mem +1
JUNEAU BOROUGH	26,391	275	96
Juneau city	26,391	275	96
KENAI PENINSULA BOROUGH	42,483	642	66
Homer city	1,632	113	14
Kasilof (CDP)	1,675	0	1,675
Kenai city	5,387	310	17
Moose Pass (CDP)	346	3	86
Nikishka (CDP)	1,106	53	20
Ninilchik (CDP)	1,340	0	1,340
Seldovia city	804	0	804
Seward city	4,571	19	229
Soldotna city	3,390	144	23
Sterling (CDP)	2,686	0	2,686
KETCHIKAN GATEWAY BOROUGH	11,063	151	73
Ketchikan city	5,919	151	39
North Tongass Highway (CDP)	2,954	0	2,954
KOBUK CENSUS AREA	6,062	83	72
Ambler city	414	9	41
Kiana city	508	7	64
Kobuk city	159	10	14
Kotzebue city	2,303	39	58
Selawik city	351	9	35
Shungnak city	153	9	15
KODIAK ISLAND BOROUGH	12,888	44	286
Akhiok city	76	0	76
Kodiak city	5,804	44	129
Kodiak Station (CDP)	2,285	0	2,285

Table 5--continued

Boroughs and Census Areas Places	1989 Estimated Population	1988 Resident Members	1988/89 Est Pop Per Res Mem +1
MATANUSKA-SUSITNA BOROUGH	43,434	728	60
Big Lake (CDP)	5,298	173	30
Bodenburg Butte (CDP)	1,191	26	44
Houston city	924	0	924
Palmer city	3,060	210	15
Sutton (CDP)	913	20	43
Talkeetna (CDP)	1,178	0	1,178
Wasilla city	3,932	216	18
Willow (CDP)	568	83	7
NOME CENSUS AREA	7,704	18	405
Nome city	2,834	18	149
NORTH SLOPE BOROUGH	5,302	0	5,302
Barrow city	2,563	0	2,563
PRINCE OF WALES-OUTER KETCHIKAN	5,511	0	5,511
Coffman Cove (CDP)	206	0	206
Craig city	969	0	969
Metlakatla (CDP)	1,006	0	1,006
Thorne Bay (CDP)	461	0	461
SITKA BOROUGH	7,530	142	53
Sitka city	7,528	142	53
SKAGWAY-YAKUTAT-ANGOON CENSUS AREA	3,577	0	3,577
Elfin Cove (CDP)	51	0	51
Pelican city	210	0	210
Skagway city	572	0	572
Tenakee Springs city	120	0	120
Yakutat city	868	0	868
SOUTHEAST FAIRBANKS CENSUS AREA	6,347	443	14
Delta Junction city	1,027	363	3
Fort Greely (CDP)	1,233	0	1,233
Northway (CDP)	87	0	87
Teflin (CDP)	83	0	83
Tok (CDP)	1,076	80	13

Table 5--continued

Boroughs and Census Areas Places	1989 Estimated Population	1988 Resident Members	1988/89 Est Pop Per Res Mem +1
VALDEZ-CORDOVA CENSUS AREA	8,529	188	45
Chitina (CDP)	51	0	51
Copper Center (CDP)	126	35	3
Cordova city	2,022	0	2,022
Glennallen (CDP)	408	3	102
Valdez city	3,713	138	27
Whittier city	233	12	18
WADE HAMPTON CENSUS AREA	5,467	0	5,467
Emmonak city	407	0	407
Mountain Village city	1,219	0	1,219
WRANGELL-PETERSBURG CENSUS AREA	6,331	122	51
Petersburg city	2,641	122	21
Port Alexander city	160	0	160
Wrangell city	2,452	0	2,452
YUKON-KOYUKUK CENSUS AREA	9,316	50	183
Anderson city	137	18	7
Central (CDP)	150	0	150
Chalkyitsik (CDP)	60	0	60
Fort Yukon city	612	4	122
Galena city	795	0	795
Healy (CDP)	586	28	20

Sources: National Planning Data Corporation, Ithaca, NY
 Urban Decision Systems
 Research Services Division, Sunday School Board, SBC, Nashville, TN

Notes: Resident members are allocated geographically according to the location of the church or mission to which they belong.

Calculation of the population per resident member ratio was facilitated by adding one to the number of resident members, thereby avoiding dividing by zero.

NEW TABLE 6

BOROUGHES, CENSUS AREAS, AND PLACES IN ALASKA
SORTED BY POPULATION PER RESIDENT MEMBER,
1989

Boroughs and Census Areas Place Names	1989 Estimated Population	1988 Resident Members	1988/89 Est Pop Per Res Mem +1
ALASKA	530,370	11,130	48
BETHEL CENSUS AREA	12,733	0	12,733
ALEUTIAN ISLANDS CENSUS AREA	8,278	0	8,278
DILLINGHAM CENSUS AREA	5,937	0	5,937
PRINCE OF WALES-OUTER KETCHIKAN	5,511	0	5,511
WADE HAMPTON CENSUS AREA	5,467	0	5,467
NORTH SLOPE BOROUGH	5,302	0	5,302
SKAGWAY-YAKUTAT-ANGOON	3,577	0	3,577
HAINES BOROUGH	1,641	0	1,641
BRISTOL BAY BOROUGH	1,297	0	1,297
NOME CENSUS AREA	7,704	18	405
KODIAK ISLAND BOROUGH	12,888	44	286
YUKON-KOYUKUK CENSUS AREA	9,316	50	183
JUNEAU BOROUGH	26,391	275	96
KETCHIKAN GATEWAY BOROUGH	11,063	151	73
KOBUK CENSUS AREA	6,062	83	72
KENAI PENINSULA BOROUGH	42,483	642	66
MATANUSKA-SUSITNA BOROUGH	43,434	728	60
SITKA BOROUGH	7,530	142	53
WRANGELL-PETERSBURG CENSUS AREA	6,331	122	51
VALDEZ-CORDOVA CENSUS AREA	8,529	188	45
ANCHORAGE BOROUGH	223,003	6,257	36
FAIRBANKS NORTH STAR BOROUGH	69,546	1,987	35
SOUTHEAST FAIRBANKS CENSUS AREA	6,347	443	14

New Table 6--continued

Boroughs and Census Areas	1989	1988	1988/89
Place names	Estimated Population	Resident Members	Est Pop Per Res Mem +1
Eielson AFB (CDP)	6,438	0	6,438
College (CDP)	5,901	0	5,901
Bethel city	3,399	0	3,399
North Tongass Highway (CDP)	2,954	0	2,954
Sterling (CDP)	2,686	0	2,686
Barrow city	2,563	0	2,563
Wrangell city	2,452	0	2,452
Kodiak Station (CDP)	2,285	0	2,285
Dillingham city	2,026	0	2,026
Cordova city	2,022	0	2,022
Kasilof (CDP)	1,675	0	1,675
Sand Point city	1,651	0	1,651
Akolmiut city	1,598	0	1,598
Unalaska city	1,444	0	1,444
Ninilchik (CDP)	1,340	0	1,340
Fort Greely (CDP)	1,233	0	1,233
Mountain Village city	1,219	0	1,219
Talkeetna (CDP)	1,178	0	1,178
St. Paul city	1,173	0	1,173
Cold Bay (CDP)	1,170	0	1,170
Adak Station (CDP)	1,103	0	1,103
Metlakatla (CDP)	1,006	0	1,006
Kipnuk (CDP)	972	0	972
Craig city	969	0	969
Haines city	946	0	946
Houston city	924	0	924
Yakutat city	868	0	868
Seldovia city	804	0	804
Galena city	795	0	795
King Salmon (CDP)	659	0	659

New Table 6--continued

Boroughs and Census Areas Place names	1989 Estimated Population	1988 Resident Members	1988/89 Est Pop Per Res Mem +1
Skagway city	572	0	572
Thorne Bay (CDP)	461	0	461
Emmonak city	407	0	407
Seward city	4,571	19	229
Pelican city	210	0	210
Coffman Cove (CDP)	206	0	206
Port Alexander city	160	0	160
Central (CDP)	150	0	150
Nome city	2,834	18	149
Kodiak city	5,804	44	129
Fort Yukon city	612	4	122
Tenakee Springs city	120	0	120
Glennallen (CDP)	408	3	102
Juneau city	26,391	275	96
Northway (CDP)	87	0	87
Moose Pass (CDP)	346	3	86
Teflin (CDP)	83	0	83
Ekwok city	78	0	78
Akhiok city	76	0	76
Kiana city	508	7	64
Chalkyitsik (CDP)	60	0	60
Kotzebue city	2,303	39	58
Sitka city	7,528	142	53
Elfin Cove (CDP)	51	0	51
Chitina (CDP)	51	0	51
Bodenburg Butte (CDP)	1,191	26	44
Sutton (CDP)	913	20	43
Ambler city	414	9	41
Ketchikan city	5,919	151	39
Anchorage city	223,003	6,257	36

New Table 6--continued

Boroughs and Census Areas Place names	1989 Estimated Population	1988 Resident Members	1988/89 Est Pop Per Res Mem +1
Selawik city	351	9	35
Big Lake (CDP)	5,298	173	30
Valdez city	3,713	138	27
Soldotna city	3,390	144	23
Fairbanks city	30,208	1,345	22
Petersburg city	2,641	122	21
Nikishka (CDP)	1,106	53	20
Healy (CDP)	586	28	20
Wasilla city	3,932	216	18
Whittier city	233	12	18
Kenai city	5,387	310	17
Shungnak city	153	9	15
Palmer city	3,060	210	15
Kobuk city	159	10	14
Homer city	1,632	113	14
Tok (CDP)	1,076	80	13
Salcha (CDP)	826	95	9
Anderson city	137	18	7
Willow (CDP)	568	83	7
Moose Creek (CDP)	530	140	4
Copper Center (CDP)	126	35	3
Delta Junction city	1,027	363	3
North Pole city	867	407	2

Sources: National Planning Data Corporation, Ithaca, NY
 Urban Decision Systems, Los Angeles, CA
 Research Services Division, Sunday School Board, SBC, Nashville, TN
 Alaska Baptist Convention, Anchorage, AK

ALASKA BAPTIST CONVENTION
 1750 O'Malley Road
 Anchorage, Alaska 99516
 (907) 344-9627

DIRECTORY

57 Churches/26 Missions/23 P.P.

<u>STAFF, ALASKA BAPTIST CONVENTION</u>		<u>8/03/89</u>	<u>344-9627</u>
✓ Bill G. Duncan (Betty) Executive Director Dir. Evang/Bro/Stewardship	10761 Commodore Park Drive Anchorage	99507	344-7492
✓ J.D. Back (Virginia) Director of Missions	6901 Burlwood Anchorage	99507	344-8106
Shirley Miebs (Ben) Dir. Religious Education	14145 Lake Otis Road Anchorage	99516	345-0530
✓ Judy Rice Dir. WMU/Missions Ministries	7051 Town & Country Anchorage	99502	248-0956
LaVerne Bradshaw (Willard) Administrative Secretary	P.O. Box 230872 Anchorage	99523	344-1123
Stina Rhoades (Rod) Bookkeeper	P.O. Box 112683 Anchorage	99511	243-1480
Loretta Tyler Secretary	3503 Richmond Ave. #M6 Anchorage	99508	279-5294
<u>FAMILY SERVICE CENTER</u>		<u>1600 O'Malley Road, Anchorage</u>	<u>99516 349-2222</u>
Gordon Lantrip (Shirley) Director	708 Copperbush Court Anchorage	99518	344-5570
Lorraine Angel Office Coordinator	13102 Brandon #12 Anchorage	99515	561-6285
<u>ALASKA STATE MISSIONARIES</u>			
✓ Willie Johnson General Missionary	P.O. Box 812 Cooper Landing	99572	595-1221
✓ Don Rollins (Marianne) Dir. Alaska Baptist Native School of Theology	P.O. Box 140210 Anchorage	99514	277-3985 688-9289

✓ Valeria Sherard General Missionary	2921 W. 29th Ave. #4B Anchorage	99517	243-6560
✓ Louise Yarbrough Regional CCM Consultant	4240 Wisconsin, Suite 215 2921 W. 29th Ave. #7B Anchorage	99517 99517	248-1471 248-0934
<hr/>			
LAVERNE GRIFFIN BAPTIST ASSEMBLY HC 33 Box 2893-J, Wasilla 99687 376-6887			
Camp Dining Hall			373-0868
John Nelson (Pam) Manager	HC 33 Box 2893-J Wasilla	99687	376-6887
<hr/>			
WAYLAND BAPTIST ALASKA CENTER 4240 Wisconsin, Anchorage 99517 248-2122			
Harvey Angel (Betty) Director	4240 Wisconsin Anchorage	99517	248-2122
<hr/>			
19 Churches/4 Missions/4 Preaching Points			
<hr/>			
CHUGACH BAPTIST ASSOCIATION P. O. BOX 110670/1131 E. 76th 99511 344-1221			
✓ Roy Williams (Ozella) Director of Missions	1230 W. 79th Ave., Anchorage	99512	349-5595
Marilyn Henry (Wade) Administrative Assistant	2247 Vanderbilt Circle Anchorage	99508	278-3819
CALVARY BAPTIST Mike McKay, Interim	401 East Manor	99501	276-3803
✓ DEAF MINISTRY P.P. Art Parker (Marian) (Sponsored by Muldoon Denali)	382 Muldoon Rd., Anchorage	99504	333-9558
EAGLE RIVER FIRST BAPTIST Bob Buster (Charlotte) M.M.: Phil Ulmer	P.O. Box 773249, Eagle River 9937 Annette Circle 626 Nitoanya Court	99577 99577 99577	694-2292 694-1570 694-5730
✓ EAST THIRD AVENUE BAPTIST Wayne Bailey (Susie) M.M.: Ted Moses	P.O. Box 101617 9331 Blackberry #3 3401 Cherry	99510 99515 99504	279-3631 248-2454 337-4481
EKWOK Preaching Point (Sponsored by Faith)	Ekwok 4240 Wisconsin, Anchorage	99517	243-1777

EMMONAK MISSION	Emmonak		
Willie Johnson	P.O. Box 812, Cooper Landing	99572	595-1221
(Sponsored by First, Anchorage)			
FAITH BAPTIST	4240 Wisconsin	99517	243-1777
Walter Davidson (Pat)	2900 Ruby Drive	99502	248-3031
M.M.: Sam Jones	3311 Balchen Drive #B	99517	248-7464
FAITH EAST BAPTIST	4301 Mt. View Drive	99508	279-1244
David Garrett (Karen)	P.O. Box 210701, Anchorage	99521	333-5711
FIRST, ANCHORAGE	1100 W. Tenth Avenue	99501	279-8481
Frank Minton (Joyce)	2167 Belair	99517	274-3004
M.Y.: Robert Day	1100 W. Tenth Avenue	99501	274-2861
FIRST, BIRCHWOOD	P.O. Box 670489, Chugiak	99567	688-2159
Robert Chadwick (Joan)	Same		688-2472
M.R.E.: Dale Steeby	P.O. Box 670193, Chugiak	99567	688-2371
M.M.: Mike Jeffers	18110 MacLaren, Eagle River	99577	696-0478
M.Y.: Danny Crow	SR Box 9439 Highland Dr.	99577	688-2159
FIRST KOREAN BAPTIST MISSION	1120 East 13th Avenue	99501	272-6913
Woo Bong Chang (Hannah)	3102 Boniface Parkway	99504	333-7767
(Sponsored by Grandview)			
GRANDVIEW BAPTIST	1300 Columbine Street	99508	276-6027
Bob Jones (Debbie)	7421 Tyone Court	99504	337-4882
M.M.: Lee Hansard	4221 Pinnacle Circle	99504	333-4999
Deaf Ministry: Debbie Ward			
GREATER FRIENDSHIP BAPTIST	903 East 13th Avenue	99501	272-4346
John L. Smith (Marylon)	921 West 70th Avenue	99508	349-4065
HILLSIDE BAPTIST	5200 O'Malley Road	99516	346-3050
Gale Starkey (Linda)	10100 Hanley Circle #3	99516	346-2769
IMMANUEL BAPTIST	P.O. Box 92141	99509	344-3112
Doug Rose (Chris)	7700 Island Drive	99504	333-6618
INLET VIEW BAPTIST	3401 Rabbit Creek Road	99516	345-7830
Terry Hill (Debbie)	4410 Traverse Way	99516	345-0916
JEWEL LAKE BAPTIST	3340 Raspberry Road	99502	243-1603
Charles Bridges (LaVon)	3529 Dunkirk Drive	99502	248-3438
KING SALMON BAPTIST MISSION	King Salmon		
Supply Pastor	4240 Wisconsin, Anchorage	99517	243-1777
(Sponsored by Faith, Anchorage)			
MOUNTAIN VIEW NATIVE P.P.	Anchorage		
Willie Johnson			
(Sponsored by East Third)			

MOUNTAIN VILLAGE P.P.

Willie Johnson
(Sponsored by First, Anchorage)

MULDOON DENALI BAPTIST	382 Muldoon Road, Anchorage	99504	333-9558
Keith Miles (Roxanne)	8610 Willawa Ave.	99504	338-3939
M.M.: Dale Mitchell	5640 Chilkoot Court	99504	337-3955
M.Y.: Shawn Hall	170 Grand Larry #10	99504	333-7949
NEW HOPE BAPTIST	333 North Price Street	99508	272-9315
Carl Johnson (Helen)	2821 Leeward Place	99516	345-4455
M.R.E.: Helen Vickerson	500 Patterson Street	99504	333-8249
M.Y.: David Frazier	8050 Pioneer Drive #304	99504	338-2387
✓ SOLID ROCK BAPTIST	P.O. Box 230836, Anchorage	99523	344-4154
Paul Brewer (Evelyn)	P.O. Box 230984	99523	337-2945
SOUTH ANCHORAGE BAPTIST	10017 Victor Road	99515	349-4246
Roy Williams, Interim Pastor			344-1221
SUNSET HILLS BAPTIST	P.O. Box 110205, Anchorage	99511	345-2500
Jay George (Nina)	P.O. Box 111334, Anchorage	99511	345-7244
M.M.: Mike Kopp	961 Coral Lane	99515	345-0617
UNIVERSITY BAPTIST	4313 Wright Street	99508	562-2685
J.D. Back, Interim Pastor			
✓ VALLEY VIEW BAPTIST MISSION	10703 E. Eagle River Lp. Rd.	99577	694-7736
Royce Laseter (Sandra)	P.O. Box 770041, Eagle River	99577	694-0935
(Sponsored by Grandview, Anchorage)			

9 Churches/5 Missions/3 Preaching Points

<u>HATCHER PASS ASSOCIATION</u>	<u>P.O. Box 268, Palmer 99645</u>	<u>Messages: 745-5301</u>	
✓ Glen Little (Nancy)	P.O. Box 268, Palmer	99645	745-5302
Director of Missions			
BIG LAKE BAPTIST	P.O. Box 871032, Wasilla	99687	892-6646
Jerry Pinkerton (Connie)	Same		376-6824
Jim Nelson, Associate Pastor			373-6924
BODENBERG BUTTE BAPTIST	HC 02, Box 7241, Palmer	99645	746-0154
✓ Paul Wells (Sharon)	HC 04, Box 9021-M, Palmer	99645	745-6389
M.M.: Pam Doerr	P.O. Box 2032, Palmer	99645	745-5572
CHICKALOON PREACHING POINT	Chickaloon		
Paul Wells (Sharon)	HC 04, Box 9021-M, Palmer	99645	745-6389
(Sponsored by First, Palmer)			

CHITINA PREACHING POINT	P. O. Box 28, Chitina	99566	
✓ Gene Coppedge (Edith)	Same		
(Sponsored by Muldoon Denali)			
COTTONWOOD SHORES BAPTIST	P. O. Box 874247, Wasilla	99687	373-2164
✓ Jere Scott (Peggy)	Same		373-2165
FAIRVIEW LOOP BAP. MISSION	P. O. Box 874055, Wasilla	99687	376-3178
✓ Leonard Everman (Marsha)	P. O. Box 874054, Wasilla	99687	Same
M.M.: Lane Olson	P. O. Box 874145, Wasilla	99687	745-8392
(Sponsored by Faith, Anchorage)			
FIRST, PALMER	P. O. Box 2689, Palmer	99645	745-4483
Judson Owen (Georgie)	P. O. Box 2254, Palmer	99645	746-0785
M.M.: Jim Rodgers	P. O. Box 2689, Palmer	99645	745-1624
FIRST, VALDEZ	P. O. Box 888, Valdez	99686	835-4898
Supply Pastor			
M.M.: Roslyn Strang	P. O. Box 1459, Valdez	99686	835-2309
FIRST, WASILLA	900 Leatherleaf Lp., Wasilla	99687	376-4668
Jim Eller (Linda)	940 Leatherleaf Lp.	99687	376-2266
M.M./A.P.: Randy Covington	1340 Brant Circle	99687	376-0696
FIRST BAPTIST, WILLOW	P. O. Box 145, Willow	99688	495-6852
✓ David Burk (Debbie)	Same		Same
		Office	376-3118
✓ GLENNALLEN BAPTIST MISSION	P. O. Box 487, Glennallen	99588	822-3912
Rick Hale (Debbie)	Same		Same
(Sponsored by Mt. View, Copper Center)			
✓ KASHWITNA COMMUNITY BAPTIST	Willow		
Hank Googe (Donna)	20762-A Juniper Dr., EAFB	99506	753-9494
MALEMUTE LAKE P. P.	Skwentna		
Mike Meyers	P. O. Box 268, Palmer	99645	733-2822
(Kashwitna Community)			
MONTANA CREEK MISSION	HC 89, Box 580, Willow	99688	733-2591
✓ Randy Daniels (Kathy)	Same		
(Sponsored by Grandview, Anchorage)			
MT. VIEW BAPTIST	HC 60, Box 211, Copper Center	99573	822-5262
✓ Richard Burns (Carol)	Same		
M.M.: Lincoln Smith	HC 60, Box 155		
SILVER LAKE BAPTIST MISSION	P. O. Box 28, Chitina	99566	
Gene Coppedge (Edith)	Telephone Messages - Caribou Clatter		822-3306
(Sponsored by Muldoon Denali, Anchorage)			

SUTTON BAPTIST MISSION	P.O. Box 377, Sutton	99674	745-6782
Paul Wells (Sharon)	HC 04, Box 9021, Palmer	99645	746-6389
(Sponsored by First, Palmer)			

13 Churches/5 Missions/3 Preaching Points

<u>TANANA VALLEY ASSOCIATION</u>	<u>P.O. Box 60261, Fairbanks</u>	<u>99706</u>	<u>456-4986</u>
✓ David Baldwin (Nancy)	109 Perperdine, Fairbanks	99709	479-2113
Director of Missions	P.O. Box 60261, Fairbanks	99706	456-4986
✓ Guy Zody	P.O. Box 84704, Fairbanks	99708	474-8674
BSU Director	864 Union Drive, Fairbanks	99708	457-1927
CENTRAL COMMUNITY P.P.	Central		
(Sponsored by Salcha)	8203 Richardson Hwy., Salcha	99714	488-2181
✓ CHALKYITSIK PREACHING POINT	Chalkyitsik		
John McClung (Pat)	P.O. Box 95, Ft. Yukon	99740	662-2436
(Sponsored by Moose Creek, North Pole)			
CLEARWATER BAPTIST MISSION			
Charles Liss (Sandy)	P.O. Box 1218, Delta Junction	99737	895-5006
(Sponsored by First, Delta Junction)			
✓ CROSS ROADS BAPTIST	P.O. Box 58255, North Pole	99705	488-3322
Supply Pastor			
M.M./Y: Rodney Duncan	P.O. Box 55628, North Pole	99705	488-9865
FAITH BAPTIST	P.O. Box 80328, Fairbanks	99708	479-5063
Ray Nelson (Jane)	509 Fairbanks Street		479-7602
Assoc. Pastor: Ron Reihl	2823 Totem Drive, Fairbanks	99709	479-8324
M.M.: David Walstad	177 Carlyle Way, Fairbanks	99701	456-5256
FIRST, DELTA JUNCTION	P.O. Box 973, Delta Junction	99737	895-4490
Marlin Starnes (Neva)	Same		895-4631
M.M.: Jim Foster	P.O. Box 673, Delta Junction	99737	895-4361
FIRST, FAIRBANKS	805 Sixth Avenue, Fairbanks	99701	456-4923
Denver Copeland, Interim	3010 Treaty St., North Pole	99705	488-1531
FIRST, NORTH POLE	P.O. Box 55249, North Pole	99705	488-2240
Johnny McCoy (Patty)	Same		488-2428
M.M./Youth: David Hall	P.O. Box 55249, North Pole	99705	488-1220
✓ FORT YUKON BAPTIST MISSION	P.O. Box 95, Fort Yukon	99740	662-2436
John McClung (Pat)	Same		
(Sponsored by Moose Creek, North Pole)			

✓ FRIENDSHIP BAPTIST	1501 Lacey Street, Fairbanks	99701	456-4542
Bill Webb (Debbie)	Same		
Gene Medaris, Assoc.	220 Steelhead, Fairbanks	99701	479-0983
M.M.: Dick Underwood	P.O. Box 2282, Fairbanks	99707	488-2164
GOLDSTREAM VALLEY MISSION	P.O. Box 82204, Fairbanks	99708	455-6880
Richard Demby (Ruth)	P.O. Box 80513, Fairbanks	99708	455-6591
(Sponsored by University, Fairbanks)			
MOOSE CREEK BAPTIST	3518 Hope Street, North Pole	99705	488-2407
Ben Kimbrough (Shirley)	3832 Kensington Avenue	99705	488-1788
✓ MORNING STAR BAPTIST	P.O. Box 362, Healy	99743	683-2704
Don Shannon (Carri)	Same		683-2776
M.M.: Rick Hundrup	P.O. Box 332, Healy	99743	683-2473
NORTH STAR BAPTIST	P.O. Box 3080, Anderson	99744	582-2820
James Dotson, Interim			
M.M.: Rick Brewer	P.O. Box 3106, Anderson	99744	582-2777
NORTHWAY BAPTIST MISSION	P.O. Box 446, Northway	99764	788-2241
✓ Darrell White (Phyllis)	Same		Same
(Sponsored by First, Delta Junction)			
SALCHA BAPTIST	8203 Richardson Hwy., Salcha	99714	488-2181
Jerry King (Louise)	Same		
M.M.: Greg King	Same		
SHANNON PARK BAPTIST	P.O. Box 74518, Fairbanks	99707	452-4098
Mark Kisselberg (Diann)	Same		456-1437
M.M.: David Underwood	P.O. Box 2282, Fairbanks	99707	451-8042
ST. JOHN BAPTIST	802 17 Avenue, Fairbanks	99701	456-8541
Charles Barlow (Helen)	P.O. Box 73049, Fairbanks	99707	452-7795
A.P.: Merrell Thompson	802 17th Avenue, Fairbanks	99701	456-6322
M.M.: Lisa Thomas McDougald	708 18th Avenue, Fairbanks	99701	452-2860
TETLIN PREACHING POINT	P.O. Box 37, Tok	99780	
Supply Pastor			
(Sponsored by First, Delta Junction)			
TOK BAPTIST MISSION	P.O. Box 37, Tok	99780	
Supply Pastor			
(Sponsored by First, Delta Junction)			
UNIVERSITY BAPTIST	P.O. Box 80513, Fairbanks	99708	479-2440
Dale Holley (Mary)	1977 Yankovick, Fairbanks	99701	479-2021
M.M.: Laurie Lasalle	908 Seventh Ave., Fairbanks	99701	456-5376

8 Churches/3 Missions/8 Preaching Points

TONGASS BAPTIST ASSOCIATION		Box 34419, Juneau	99803	789-3804
✓ Lewis McClendon (Alma) Director of Missions	Box 34419, Juneau Thorne Bay		99803	789-3804 828-3962
COFFMAN COVE MISSION		Coffman Cove		
✓ Dean Blankenship (Nadine) (Sponsored by First, Petersburg)	P.O. Box 19388, Thorne Bay		99919	828-3413
ELFIN COVE PREACHING POINT		Chichagof Island		
Mike Procter (Rebecca) (Sponsored by Glacier Valley)	P.O. Box 34365, Juneau		99803	789-5245
EMMANUEL BAPTIST		P.O. Box 33861, Juneau	99803	789-3505
Bill Hamilton (Kay)	Same			789-4016
FIRST, JUNEAU		P.O. Box 34657, Juneau	99803	780-4434
Johnny Jackson (Tonya)	Same			780-6160
M.M.: Paul Rocereto	3466 Richards Drive		99801	789-3209
FIRST, KETCHIKAN		1901 First Avenue, Ketchikan	99901	225-3588
Bill Brown, Interim	Same			
FIRST, PETERSBURG		P.O. Box 990, Petersburg	99833	772-4563
Earl Midkiff (Shannon)	Same			772-4679
M.M.: Dan Callaway	P.O. Box 650, Petersburg		99833	772-4582
FIRST, SITKA		514 Halibut Point Hwy., Sitka	99835	747-8684
Ted Bostick (Hazel)	204 Crabtree, Sitka		99835	747-3038
GLACIER VALLEY BAPTIST		P.O. Box 34365, Juneau	99803	789-7348
Mike Procter (Rebecca)	3921 Mendenhall Loop Rd.		99801	789-5245
HAINES PREACHING POINT		P.O. Box 467, Haines	99827	None
Mel Bartreau (Vern) (Sponsored by Emmanuel, Juneau)	Same			
LEMON CREEK PRISON P.P.		Juneau		
Otto Whitfield (Verma) (Sponsored by Emmanuel, Juneau)	P.O. Box 33861, Juneau		99803	789-9457
NORTH TONGASS BAPTIST CHURCH		P.O. Box 6256, Ketchikan	99901	247-0180
Dan Hill (Barbara)	Same			247-2691
PELICAN PREACHING POINT		Chichagof Island		
Ted Bostick (Hazel) (Sponsored by First, Sitka)	204 Crabtree, Sitka		99835	747-3038
PORT ALEXANDER P. P.				
Ted Bostick (Hazel) (Sponsored by First, Sitka)	204 Crabtree, Sitka		99835	747-3038

SKAGWAY MISSION	P.O. Box 16, Skagway	99840	983-2711
✓ Hazelton, Hewill (Terri)	Same		Same
(Sponsored by Glacier Valley)			
SOUTHEAST ISLAND MINISTRIES	P.O. Box 19388, Thorne Bay	99919	828-3413
✓ Dean Blankenship (Nadine)			
(Sponsored by First, Petersburg)			
	*Edna Bay Preaching Point		
	*Lab Bay Preaching Point		
SPANISH BAPTIST PREACHING POINT			
Mike Procter (Rebecca)	P.O. Box 34365, Juneau	99803	789-5245
(Sponsored by Glacier Valley)			
TENAKEE SPRINGS MISSION	Chichagof Island		
Mike Procter (Rebecca)	P.O. Box 34365, Juneau	99803	789-5245
(Sponsored by Glacier Valley)			
7 Churches/3 Missions/4 Preaching Points			
<u>TUSTUMENA BAPTIST ASSOCIATION</u>	<u>204 S. Forest Drive #14, Kenai</u>	<u>99611</u>	<u>283-2626</u>
✓ Elmer Sizemore (Jean)	204 S. Forest Dr. #14, Kenai	99611	283-2626
Director of Missions	Same		283-7271
DANGER BAY PREACHING POINT	Danger Bay		486-3589
Peter Olsen Jr. (Contact)	P.O. Box 2723, Kodiak	99615	
(Sponsored by Frontier, Kodiak)			
AKHIOK VILLAGE PREACHING PT.	Akhiok		486-3589
Steve Rounsville (Contact)	P.O. Box 5049, Akhiok	99615	
(Sponsored by Frontier, Kodiak)			
CHINIAK PREACHING POINT	Chiniak		
(Sponsored by Frontier, Kodiak)			
✓ COLLEGE HEIGHTS BAPTIST	P.O. Box 2307, Soldotna	99669	262-3220
Fred Parnell (Sandy)	P.O. Box 1718	99669	262-9687
✓ FAITH BAPTIST, HOMER	P.O. Box 1406, Homer	99603	235-7742
Gregory Pierce (Mary)	P.O. Box 2866, Homer	99603	235-5319
M.M.: Monty Sowers	P.O. Box 415, Homer	99603	235-8277
FIRST, KENAI	P.O. Box 3412, Kenai	99611	283-7672
Dean Nichols (Mary Jo)	205 Birch Street, Kenai	99611	283-7337
✓ FIRST, SEWARD	P.O. Box 126, Seward	99664	224-5618
Daniel Dickson (Cynthia)	Same		Same

FIRST, SOLDOTNA	P.O. Box 186, Soldotna	99669	262-4304
Edward Wolfe (Helen)	Same		262-9126
M.M.: Marvin McBee	HC 2, Box 916, Soldotna	99669	262-7043
M.R.E./Y.: Mac Burrell	119 Little Street #5	99669	262-5404
FRONTIER BAPTIST	1910 Rezanof, Kodiak	99615	486-3589
Doug Edwards (Debbie)	Same		486-6051
M.M.: Ann Duncan	1222 Selies #40, Kodiak	99615	486-3629
MOOSE PASS MISSION	P.O. Box 111, Moose Pass	99631	
Daniel Dickson (Cynthia)	P.O. Box 126, Seward	99664	224-5618
Shirley Smith (Contact)	HCR 64, Box 541, Moose Pass	99631	288-3108
(Sponsored by First, Seward)			
MT. REDOUBT BAPTIST CHURCH	Route 1, Box 215, Kenai	99611	776-8640
Roy Moore (Barbara)	Same		
NORTH KENAI MISSION	P.O. Box 7496, Nikiski	99635	776-8234
Bill Branch (Elizabeth)	Route 1, Box 1548-3, Kenai	99611	776-5358
M.M.: Vickie Hensley	P.O. Box 3342, Kenai	99611	776-5214
(Sponsored by First, Kenai)			
SELDOVIA PREACHING POINT	Seldovia		
Fred Parnell (Sandy)	P.O. Box 1718, Soldotna	99669	262-9687
(Sponsored by First, Soldotna)			
WHITTIER BAPTIST MISSION	P.O. Box 635, #911, Whittier	99693	472-2375
Ruth Wilson (Contact)	Same		
Elmer Sizemore, Pastor	204 S. Forest Dr. #14, Kenai	99611	283-7271
(Sponsored by Tustumena Association)			

1 Church/6 Missions/1 Preaching Point

NORTHWEST ARCTIC BAPTIST FELLOWSHIP

AQUIILAG BAPTIST MISSION	P.O. Box 115, Ambler	99786	445-2189
Ray Addy (Carol)			same
(Sponsored by First, Kotzebue)			
KOTZEBUE FIRST BAPTIST	P.O. Box 26, Kotzebue	99752	442-3294
(Sept) Jack Breeden (Billie)	Same		
Harley Shield (Martha)	P.O. Box 101, Kotzebue	99752	442-3774
KIANA BAPTIST MISSION	P.O. Box 22, Kiana	99749	475-2128
Harley Shield (Martha)	P.O. Box 101, Kotzebue	99752	442-3774
(Sponsored by First, Kotzebue)			
KOBUK BAPTIST MISSION	P.O. Box 28, Kobuk	99751	445-2189
Ray Addy (Carol)	P.O. Box 115, Ambler	99786	same
(Sponsored by First, Kotzebue)			

NOME BAPTIST MISSION	P.O. Box 934, Nome	99762	443-5448
✓ Don Tallison (Vivian)	Same		
M.M.: Ester Bahnke	P.O. Box 186, Nome	99762	
(Sponsored by First, Anchorage)			
NOME JAIL MINISTRY P.P.	Nome		
Don Tallison			
(Sponsored by Nome Mission)			
✓ SELAWIK BAPTIST MISSION	P.O. Box 102, Selawik	99770	
Harley Shield (Martha)	P.O. Box 101, Kotzebue	99752	442-3774
(Sponsored by First, Kotzebue)			
SHUNGNAK BAPTIST MISSION	General Delivery, Shungnak	99773	445-2189
Ray Addy (Carol)	P.O. Box 115, Ambler	99786	same
(Sponsored by First, Kotzebue)			