

Understanding Kentucky Baptist Churches

Session II

Research Services, North American Mission Board

Phillip B. Jones

December 12, 2001

Table 4
Churches and Change in Churches for Kentucky
by County, 1990 to 2000

	—Churches—		—Change—	
	1990	2000	Net	Percent
Kentucky	8,236	8,424	188	2.3 %
Adair	18	13	-5	-27.8
Allen	15	15	0	0.0
Anderson	13	16	3	23.1
Ballard	17	17	0	0.0
Barren	25	25	0	0.0
Bath	2	2	0	0.0
Bell	58	61	3	5.2
Boone	16	19	3	18.8
Bourbon	5	6	1	20.0
Boyd	22	25	3	13.6
Boyle	18	21	3	16.7
Bracken	7	7	0	0.0
Breathitt	2	4	2	100.0
Breckinridge	21	24	3	14.3
Bullitt	27	27	0	0.0
Butler	25	27	2	8.0
Caldwell	27	27	0	0.0
Calloway	27	28	1	3.7
Campbell	19	20	1	5.3
Carlisle	11	11	0	0.0
Carroll	9	9	0	0.0
Carter	10	10	0	0.0
Casey	13	13	0	0.0
Christian	38	43	5	13.2
Clark	11	15	4	36.4
Clay	20	22	2	10.0
Clinton	7	7	0	0.0
Crittenden	16	16	0	0.0
Cumberland	4	4	0	0.0
Daviess	47	53	6	12.8
Edmonson	15	8	-7	-46.7
Elliott	1	1	0	0.0
Estill	14	18	4	28.6
Fayette	32	42	10	31.3
Fleming	4	4	0	0.0

Table 4 (continued)

	—Churches—		—Change—	
	1990	2000	Net	Percent
Floyd	13	15	2	15.4 %
Franklin	28	28	0	0.0
Fulton	13	12	-1	-7.7
Gallatin	8	8	0	0.0
Garrard	11	12	1	9.1
Grant	17	18	1	5.9
Graves	44	44	0	0.0
Grayson	17	16	-1	-5.9
Green	22	21	-1	-4.5
Greenup	10	12	2	20.0
Hancock	13	13	0	0.0
Hardin	37	45	8	21.6
Harlan	43	45	2	4.7
Harrison	9	9	0	0.0
Hart	26	27	1	3.8
Henderson	28	28	0	0.0
Henry	15	17	2	13.3
Hickman	13	13	0	0.0
Hopkins	34	38	4	11.8
Jackson	19	19	0	0.0
Jefferson	126	164	38	30.2
Jessamine	8	7	-1	-12.5
Johnson	3	3	0	0.0
Kenton	29	28	-1	-3.4
Knott	6	7	1	16.7
Knox	56	57	1	1.8
Larue	17	18	1	5.9
Laurel	41	44	3	7.3
Lawrence	6	5	-1	-16.7
Lee	5	5	0	0.0
Leslie	6	6	0	0.0
Letcher	10	13	3	30.0
Lewis	5	6	1	20.0
Lincoln	26	31	5	19.2
Livingston	26	26	0	0.0
Logan	31	33	2	6.5
Lyon	12	13	1	8.3
McCracken	30	31	1	3.3
McCreary	9	9	0	0.0
McLean	12	11	-1	-8.3

Table 4 (continued)

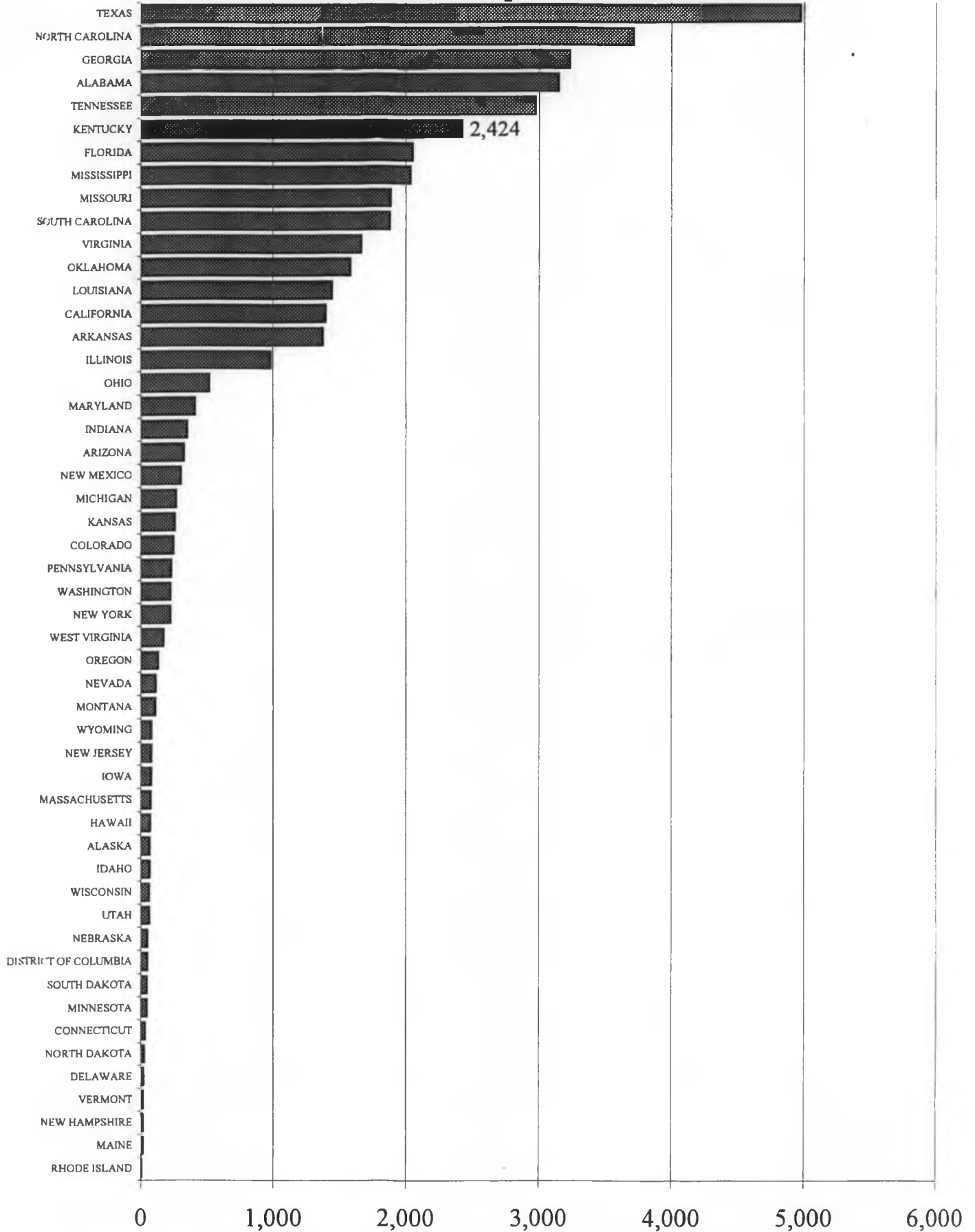
	—Churches—		—Change—	
	1990	2000	Net	Percent
Madison	37	42	5	13.5 %
Magoffin	4	5	1	25.0
Marion	11	11	0	0.0
Marshall	25	27	2	8.0
Martin	2	2	0	0.0
Mason	10	11	1	10.0
Meade	14	15	1	7.1
Menifee	1	2	1	100.0
Mercer	18	18	0	0.0
Metcalf	9	11	2	22.2
Monroe	9	10	1	11.1
Montgomery	6	7	1	16.7
Morgan	2	3	1	50.0
Muhlenberg	45	46	1	2.2
Nelson	15	17	2	13.3
Nicholas	3	3	0	0.0
Ohio	43	44	1	2.3
Oldham	11	14	3	27.3
Owen	25	25	0	0.0
Owsley	4	6	2	50.0
Pendleton	19	19	0	0.0
Perry	23	20	-3	-13.0
Pike	20	21	1	5.0
Powell	3	4	1	33.3
Pulaski	62	65	3	4.8
Robertson	1	1	0	0.0
Rockcastle	25	22	-3	-12.0
Rowan	2	3	1	50.0
Russell	16	15	-1	-6.3
Scott	13	15	2	15.4
Shelby	24	27	3	12.5
Simpson	11	13	2	18.2
Spencer	7	10	3	42.9
Taylor	23	24	1	4.3
Todd	14	14	0	0.0
Trigg	19	22	3	15.8
Trimble	8	8	0	0.0
Union	16	16	0	0.0
Warren	41	46	5	12.2
Washington	12	14	2	16.7

Table 4 (continued)

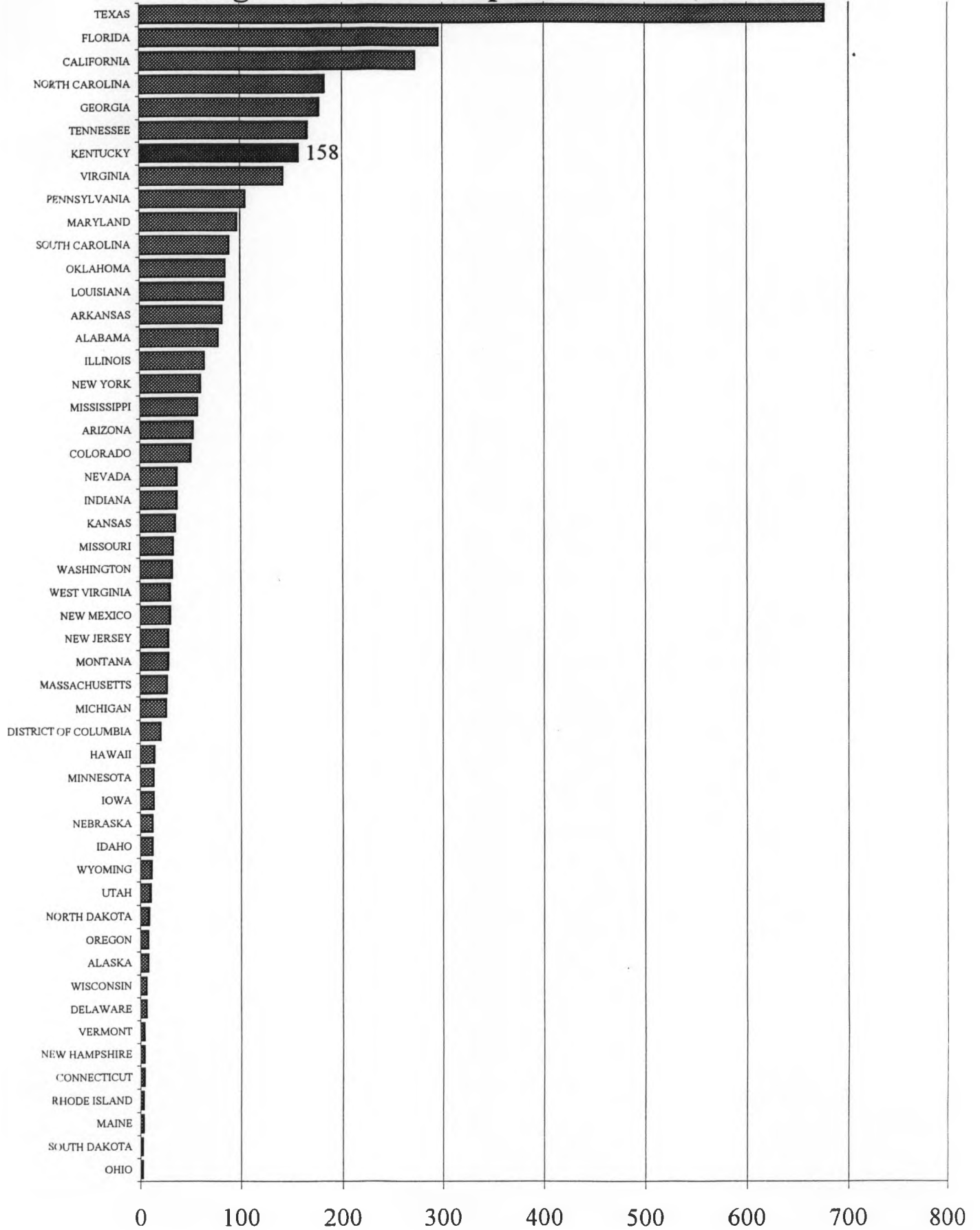
	—Churches—		—Change—	
	1990	2000	Net	Percent
Wayne	24	24	0	0.0 %
Webster	18	17	-1	-5.6
Whitley	59	56	-3	-5.1
Wolfe	1	1	0	0.0
Woodford	11	11	0	0.0

Source: Annual Church Profile, LifeWay Christian Resources,
Nashville, Tenn. Compiled by Research Services, North
American Mission Board, Alpharetta, Ga.

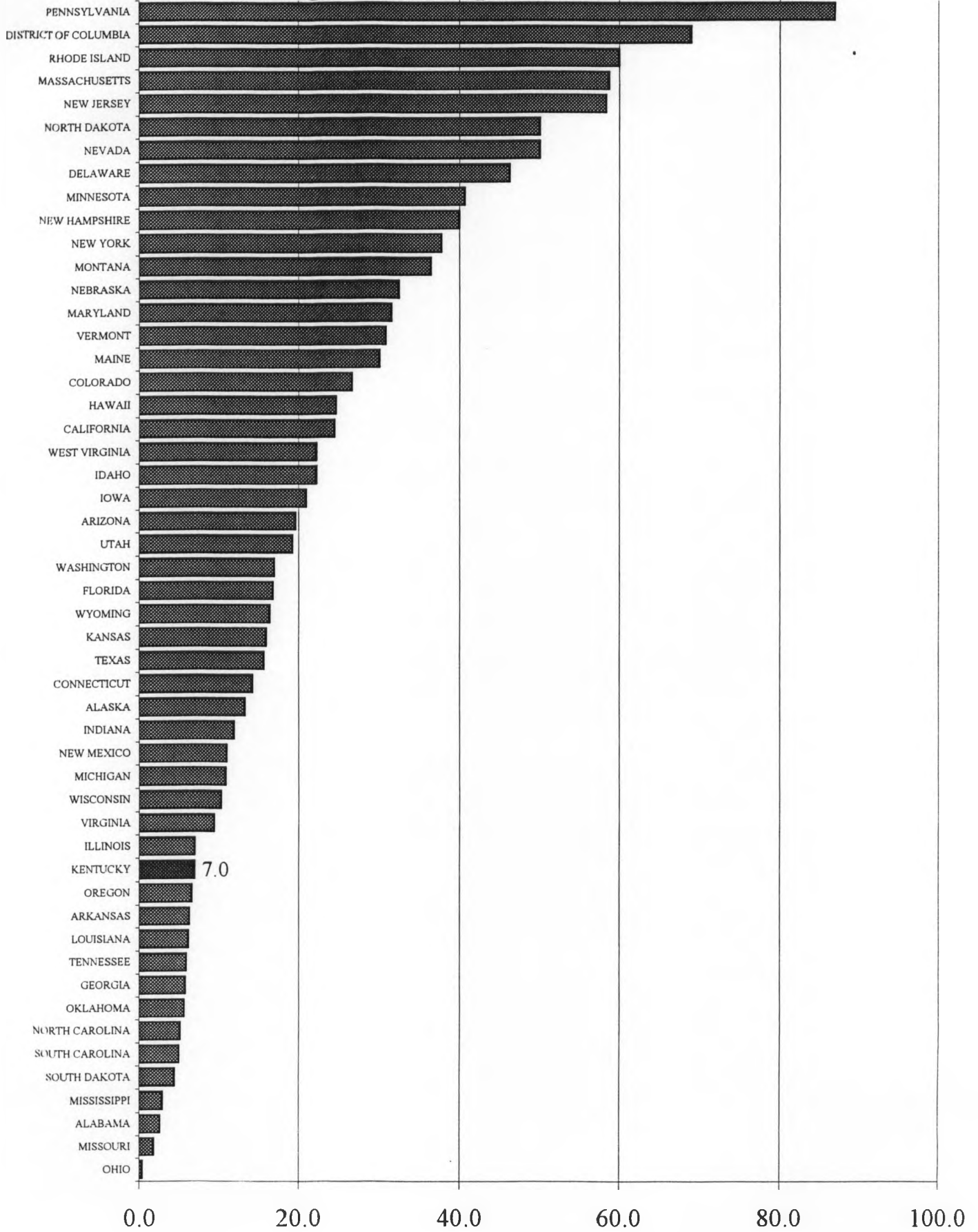
Number of Southern Baptist Churches, 2000



Net Change in Southern Baptist Churches, 1990-2000



Percent Change in So. Baptist Churches, 1990-2000



Net Change in Churches, 1990 - 2000

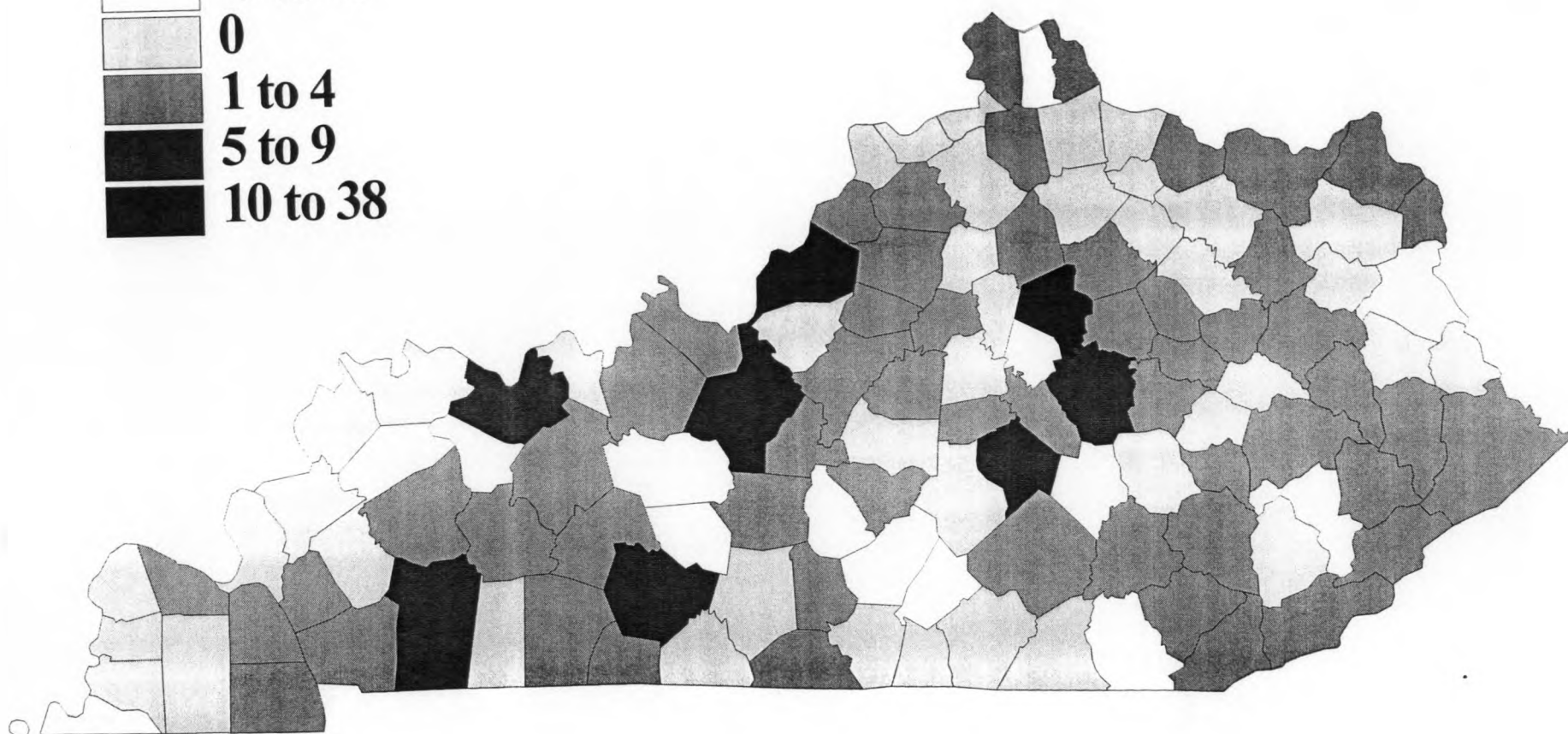
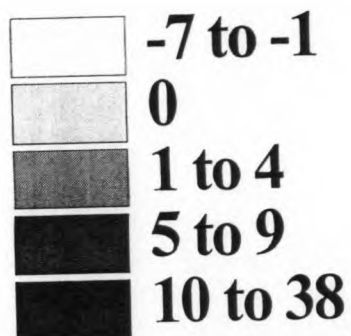


Table 5
Population per Church for Kentucky by
County, 1990 to 2000, and Index of Change

	Population per Church		Index of Change
	1990	2000	
Kentucky	241,660	237,472	98.3
Adair	853.3	1,326.5	155.4
Allen	975.2	1,186.7	121.7
Anderson	1,120.8	1,194.4	106.6
Ballard	464.8	487.4	104.9
Barren	1,360.0	1,521.3	111.9
Bath	4,846.0	5,542.5	114.4
Bell	543.2	492.8	90.7
Boone	3,599.3	4,525.8	125.7
Bourbon	3,847.2	3,226.7	83.9
Boyd	2,325.0	1,990.1	85.6
Boyle	1,424.5	1,318.9	92.6
Bracken	1,109.4	1,182.7	106.6
Breathitt	7,851.5	4,025.0	51.3
Breckinridge	776.8	777.0	100.0
Bullitt	1,761.7	2,268.0	128.7
Butler	449.8	481.9	107.1
Caldwell	490.1	483.7	98.7
Calloway	1,138.3	1,220.6	107.2
Campbell	4,414.0	4,430.8	100.4
Carlisle	476.2	486.5	102.2
Carroll	1,032.4	1,128.3	109.3
Carter	2,434.0	2,688.9	110.5
Casey	1,093.2	1,188.2	108.7
Christian	1,814.2	1,680.6	92.6
Clark	2,681.5	2,209.6	82.4
Clay	1,087.3	1,116.2	102.7
Clinton	1,305.0	1,376.3	105.5
Crittenden	574.8	586.5	102.0
Cumberland	1,696.0	1,786.8	105.4
Daviess	1,855.1	1,727.3	93.1
Edmonson	690.5	1,455.5	210.8
Elliott	6,455.0	6,748.0	104.5
Estill	1,043.9	850.4	81.5
Fayette	7,042.7	6,202.7	88.1
Fleming	3,073.0	3,448.0	112.2

Table 5 (continued)

	Population per Church		Index of Change
	1990	2000	
Floyd	3,352.8	2,829.4	84.4
Franklin	1,563.6	1,703.1	108.9
Fulton	636.2	646.0	101.5
Gallatin	674.1	983.8	145.9
Garrard	1,052.6	1,232.7	117.1
Grant	925.7	1,243.6	134.3
Graves	762.5	841.5	110.4
Grayson	1,238.2	1,503.3	121.4
Green	471.4	548.5	116.3
Greenup	3,674.2	3,074.3	83.7
Hancock	604.9	645.5	106.7
Hardin	2,411.9	2,092.8	86.8
Harlan	850.6	737.8	86.7
Harrison	1,805.3	1,998.1	110.7
Hart	572.7	646.1	112.8
Henderson	1,537.3	1,601.0	104.1
Henry	854.9	885.9	103.6
Hickman	428.2	404.8	94.5
Hopkins	1,356.6	1,224.2	90.2
Jackson	629.2	710.3	112.9
Jefferson	5,277.3	4,229.3	80.1
Jessamine	3,813.5	5,577.3	146.3
Johnson	7,749.3	7,815.0	100.8
Kenton	4,897.6	5,409.4	110.5
Knott	2,984.3	2,521.3	84.5
Knox	529.9	557.8	105.3
Larue	687.0	742.9	108.1
Laurel	1,059.5	1,198.1	113.1
Lawrence	2,333.0	3,113.8	133.5
Lee	1,484.4	1,583.2	106.7
Leslie	2,273.7	2,066.8	90.9
Letcher	2,700.0	1,944.4	72.0
Lewis	2,605.8	2,348.7	90.1
Lincoln	771.0	753.6	97.7
Livingston	348.5	377.1	108.2
Logan	787.6	805.2	102.2
Lyon	552.0	621.5	112.6
McCracken	2,096.0	2,113.4	100.8
McCreary	1,733.7	1,897.8	109.5
McLean	802.3	903.5	112.6

Table 5 (continued)

	Population per Church		Index of Change
	1990	2000	
Madison	1,554.3	1,687.4	108.6
Magoffin	3,269.3	2,666.4	81.6
Marion	1,499.9	1,655.6	110.4
Marshall	1,088.2	1,115.7	102.5
Martin	6,263.0	6,289.0	100.4
Mason	1,666.6	1,527.3	91.6
Meade	1,726.4	1,756.6	101.7
Menifee	5,092.0	3,278.0	64.4
Mercer	1,063.8	1,156.5	108.7
Metcalfe	995.9	912.5	91.6
Monroe	1,266.8	1,175.6	92.8
Montgomery	3,260.2	3,222.0	98.8
Morgan	5,824.0	4,649.3	79.8
Muhlenberg	696.0	692.2	99.5
Nelson	1,980.7	2,204.5	111.3
Nicholas	2,241.7	2,271.0	101.3
Ohio	490.8	520.8	106.1
Oldham	3,023.9	3,298.4	109.1
Owen	361.4	421.9	116.7
Owsley	1,259.0	809.7	64.3
Pendleton	633.5	757.4	119.6
Perry	1,316.7	1,469.5	111.6
Pike	3,629.2	3,273.1	90.2
Powell	3,895.3	3,309.3	85.0
Pulaski	798.2	864.9	108.4
Robertson	2,124.0	2,266.0	106.7
Rockcastle	592.1	753.7	127.3
Rowan	10,176.5	7,364.7	72.4
Russell	919.8	1,087.7	118.3
Scott	1,835.9	2,204.1	120.1
Shelby	1,034.3	1,234.7	119.4
Simpson	1,376.8	1,261.9	91.7
Spencer	971.6	1,176.6	121.1
Taylor	919.4	955.3	103.9
Todd	781.4	855.1	109.4
Trigg	545.3	572.6	105.0
Trimble	761.3	1,015.6	133.4
Union	1,034.8	977.3	94.4
Warren	1,870.1	2,011.3	107.6
Washington	870.1	779.7	89.6

Table 5 (continued)

	Population per Church		Index of Change
	1990	2000	
Wayne	727.8	830.1	114.1
Webster	775.3	830.6	107.1
Whitley	564.8	640.4	113.4
Wolfe	6,503.0	7,065.0	108.6
Woodford	1,814.1	2,109.8	116.3

Source: Bureau of the Census, Washington, D.C.; Annual Church Profile, LifeWay Christian Resources, Nashville, Tenn.
Compiled by Research Services, North American Mission Board, Alpharetta, Ga.

Population Per Church, 2000

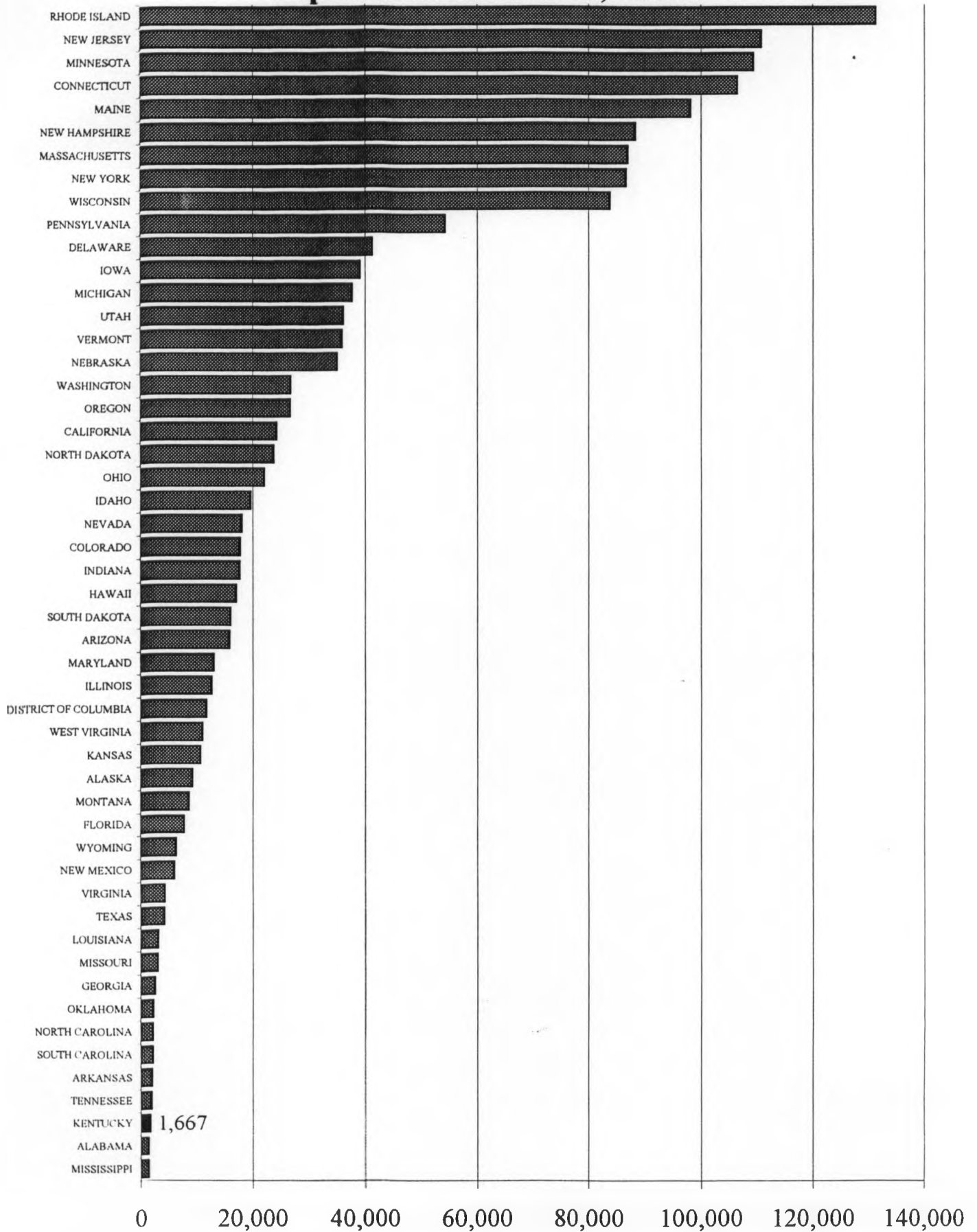


Table 6
Total Congregations and Population per Congregation
for Kentucky by County, 2000

	Churches	Church-type Missions	Total Congregations	Population per Congregation
Kentucky	2,424	53	2,477	1,632
Adair	13	0	13	1,326
Allen	15	0	15	1,187
Anderson	16	0	16	1,194
Ballard	17	0	17	487
Barren	25	0	25	1,521
Bath	2	0	2	5,543
Bell	61	2	63	477
Boone	19	1	20	4,300
Bourbon	6	0	6	3,227
Boyd	25	0	25	1,990
Boyle	21	1	22	1,259
Bracken	7	0	7	1,183
Breathitt	4	0	4	4,025
Breckinridge	24	0	24	777
Bullitt	27	0	27	2,268
Butler	27	0	27	482
Caldwell	27	0	27	484
Calloway	28	0	28	1,221
Campbell	20	1	21	4,220
Carlisle	11	0	11	486
Carroll	9	0	9	1,128
Carter	10	0	10	2,689
Casey	13	0	13	1,188
Christian	43	1	44	1,642
Clark	15	0	15	2,210
Clay	22	0	22	1,116
Clinton	7	0	7	1,376
Crittenden	16	0	16	587
Cumberland	4	0	4	1,787
Daviess	53	0	53	1,727
Edmonson	8	0	8	1,456
Elliott	1	0	1	6,748
Estill	18	0	18	850
Fayette	42	1	43	6,058
Fleming	4	1	5	2,758

Table 6 (continued)

	Churches	Church-type Missions	Total Congregations	Population per Congregation
Floyd	15	0	15	2,829
Franklin	28	1	29	1,644
Fulton	12	1	13	596
Gallatin	8	0	8	984
Garrard	12	1	13	1,138
Grant	18	1	19	1,178
Graves	44	2	46	805
Grayson	16	0	16	1,503
Green	21	1	22	524
Greenup	12	0	12	3,074
Hancock	13	0	13	646
Hardin	45	1	46	2,047
Harlan	45	0	45	738
Harrison	9	0	9	1,998
Hart	27	0	27	646
Henderson	28	0	28	1,601
Henry	17	0	17	886
Hickman	13	0	13	405
Hopkins	38	0	38	1,224
Jackson	19	1	20	675
Jefferson	164	10	174	3,986
Jessamine	7	0	7	5,577
Johnson	3	0	3	7,815
Kenton	28	2	30	5,049
Knott	7	0	7	2,521
Knox	57	2	59	539
Larue	18	0	18	743
Laurel	44	1	45	1,171
Lawrence	5	0	5	3,114
Lee	5	1	6	1,319
Leslie	6	0	6	2,067
Letcher	13	2	15	1,685
Lewis	6	0	6	2,349
Lincoln	31	0	31	754
Livingston	26	0	26	377
Logan	33	0	33	805
Lyon	13	0	13	622
McCracken	31	2	33	1,985
McCreary	9	0	9	1,898
McLean	11	0	11	903

Table 6 (continued)

	Churches	Church-type Missions	Total Congregations	Population per Congregation
Madison	42	0	42	1,687
Magoffin	5	0	5	2,666
Marion	11	1	12	1,518
Marshall	27	0	27	1,116
Martin	2	2	4	3,145
Mason	11	0	11	1,527
Meade	15	0	15	1,757
Menifee	2	0	2	3,278
Mercer	18	1	19	1,096
Metcalfe	11	0	11	912
Monroe	10	0	10	1,176
Montgomery	7	0	7	3,222
Morgan	3	0	3	4,649
Muhlenberg	46	0	46	692
Nelson	17	0	17	2,205
Nicholas	3	0	3	2,271
Ohio	44	0	44	521
Oldham	14	2	16	2,886
Owen	25	0	25	422
Owsley	6	1	7	694
Pendleton	19	0	19	757
Perry	20	1	21	1,400
Pike	21	3	24	2,864
Powell	4	0	4	3,309
Pulaski	65	1	66	852
Robertson	1	0	1	2,266
Rockcastle	22	0	22	754
Rowan	3	0	3	7,365
Russell	15	0	15	1,088
Scott	15	0	15	2,204
Shelby	27	1	28	1,191
Simpson	13	0	13	1,262
Spencer	10	0	10	1,177
Taylor	24	1	25	917
Todd	14	0	14	855
Trigg	22	0	22	573
Trimble	8	0	8	1,016
Union	16	0	16	977
Warren	46	1	47	1,969
Washington	14	0	14	780

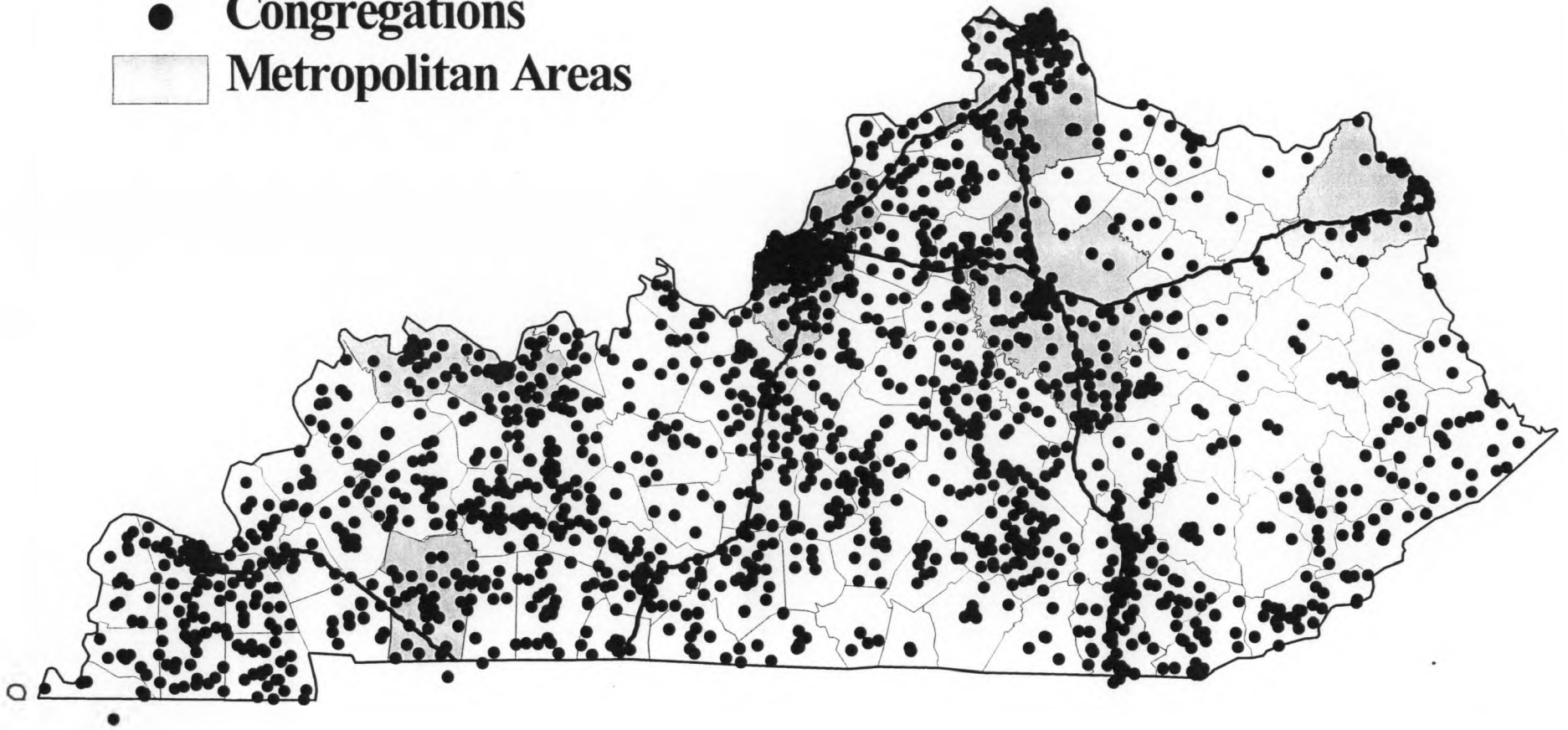
Table 6 (continued)

	Churches	Church-type Missions	Total Congregations	Population per Congregation
Wayne	24	0	24	830
Webster	17	0	17	831
Whitley	56	1	57	629
Wolfe	1	0	1	7,065
Woodford	11	0	11	2,110

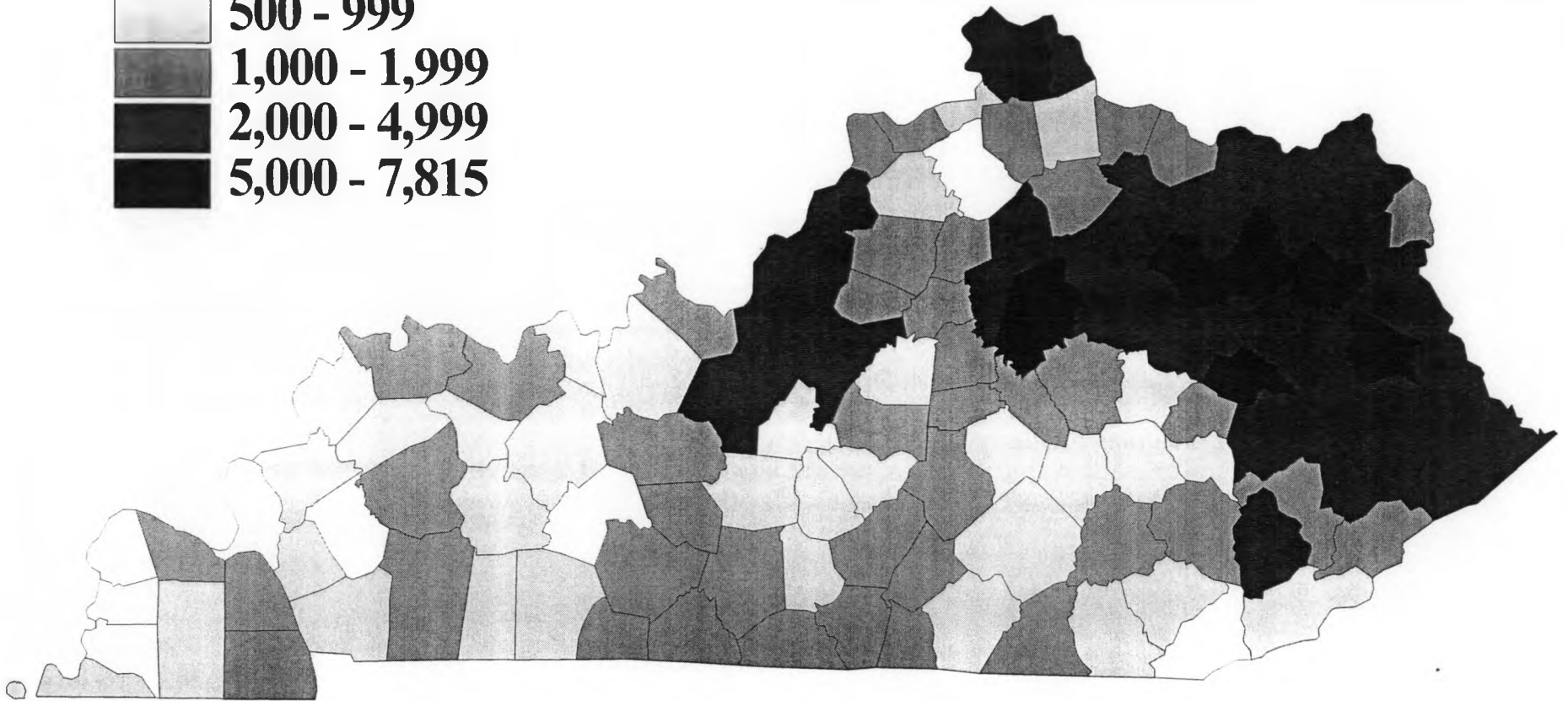
Source: Bureau of the Census, Washington, D.C.; Annual Church Profile, LifeWay Christian Resources, Nashville, Tenn. Compiled by Research Services, North American Mission Board, Alpharetta, Ga.

Southern Baptist Congregations

-  Interstates
-  Congregations
-  Metropolitan Areas



Population per Congregation, 2000



Race/Ethnicity of KBC Congregations, 2000

	Number	Percent
Anglo	2412	97.0%
Black	43	1.7%
Hispanic	10	0.4%
Asian	15	0.6%
Other	7	0.3%