

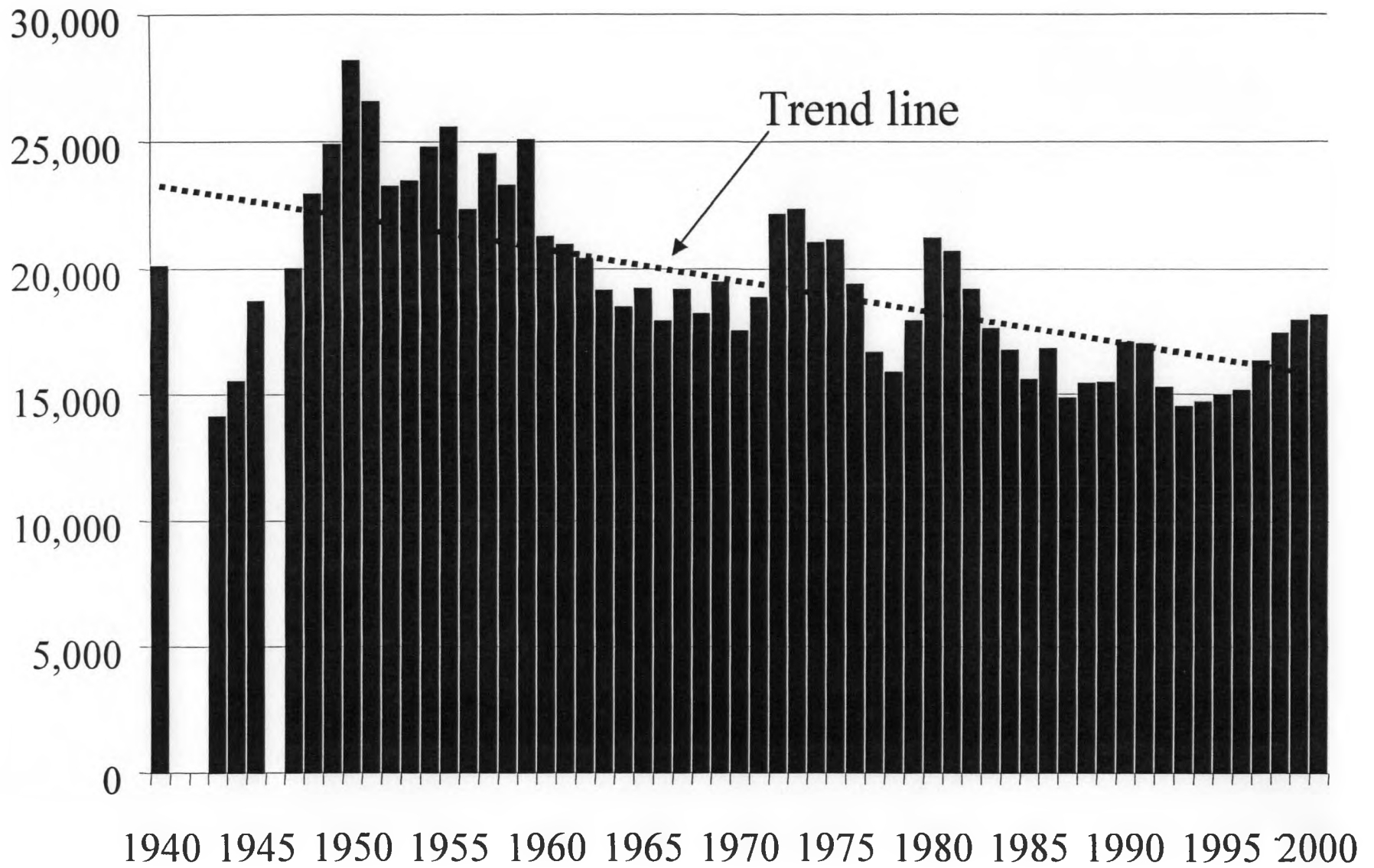
Understanding Kentucky Baptist Churches

Session IV

Research Services, North American Mission Board

***Phillip B. Jones
December 12, 2001***

Kentucky Baptist Convention Baptisms

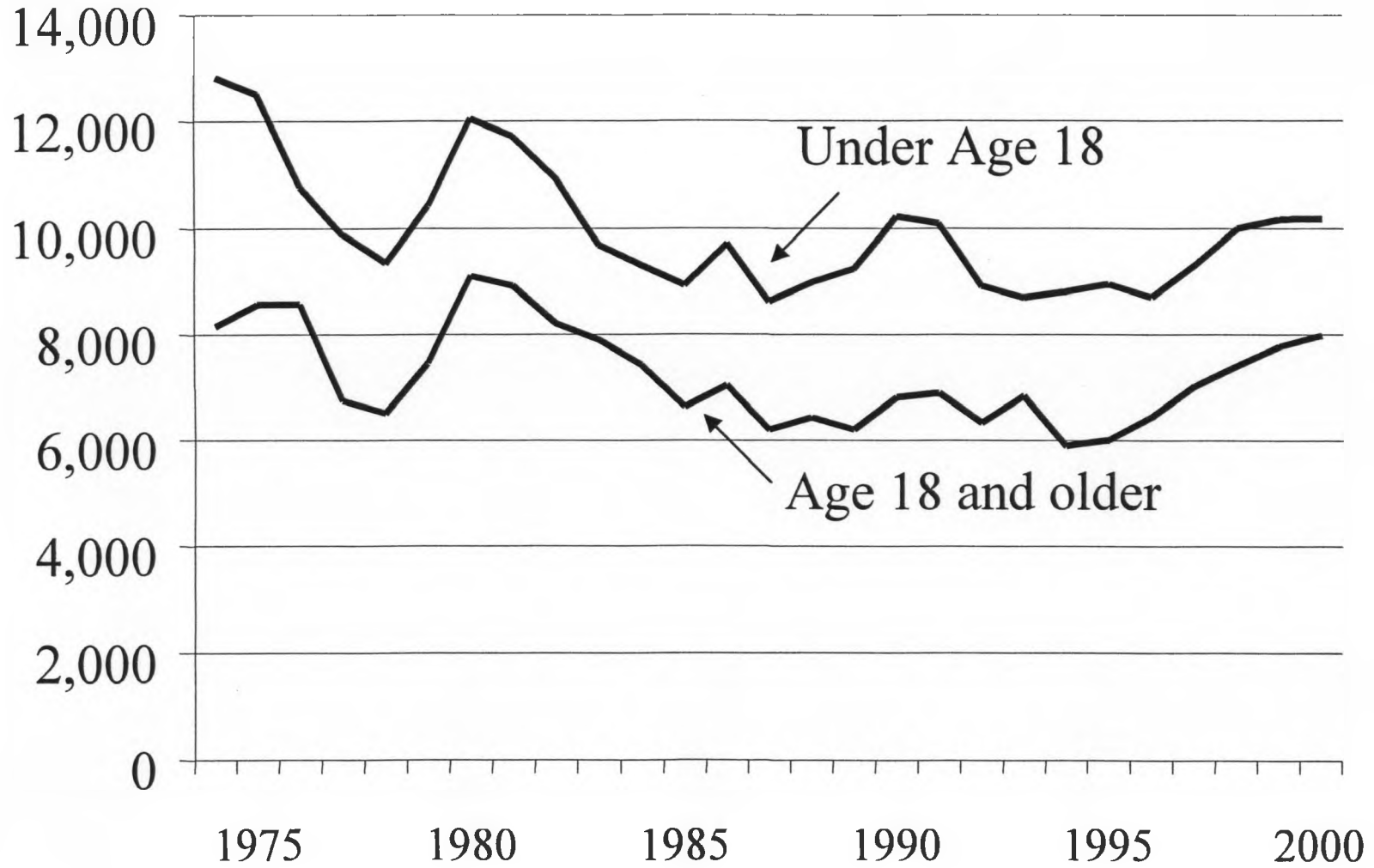


Baptisms by Age Divisions for Kentucky, 1974 to 2000

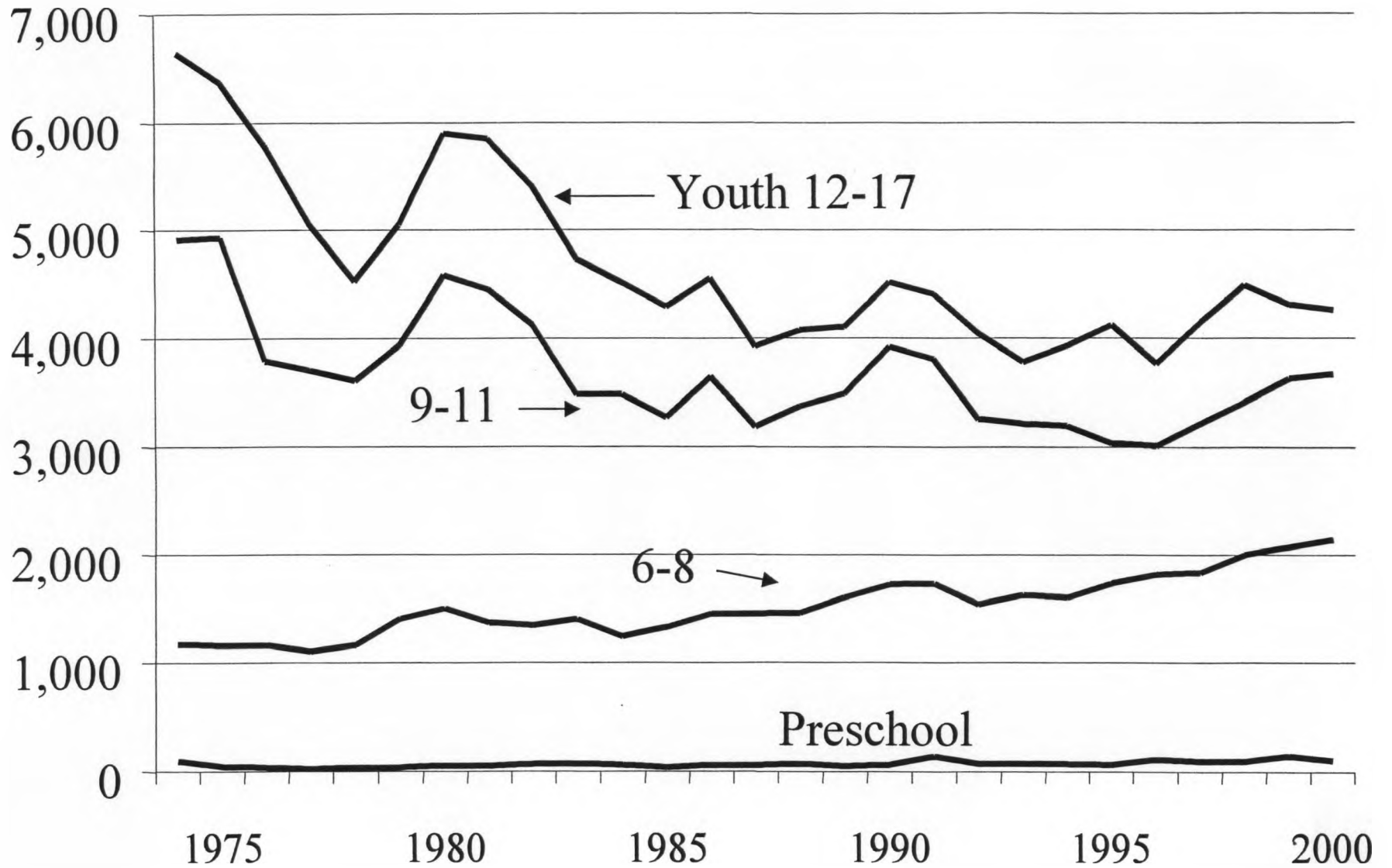
Year	Age Groups							Total ⁽²⁾	Year	Age Groups							Total ⁽²⁾
	Preschool	Children (6-8)	Children (9-11)	Youth	Adult	Adult	Senior			Preschool	Children (6-8)	Children (9-11)	Youth	Adult	Adult	Senior	
Number of Baptisms by Age Divisions								Percentage of Baptisms by Age Divisions									
1974	98	1,172	4,908	6,646	4,397	3,112	645	20,978	0.5	5.6	23.4	31.7	21.0	14.8	3.1	100.0 %	
1975	48	1,159	4,930	6,371	4,955	3,225	387	21,075	0.2	5.5	23.4	30.2	23.5	15.3	1.8	100.0	
1976	35	1,163	3,789	5,786	5,245	2,874	461	19,353	0.2	6.0	19.6	29.9	27.1	14.9	2.4	100.0	
1977	22	1,101	3,701	5,058	3,295	3,097	371	16,645	0.1	6.6	22.2	30.4	19.8	18.6	2.2	100.0	
1978	37	1,162	3,606	4,534	3,390	2,682	450	15,861	0.2	7.3	22.7	28.6	21.4	16.9	2.8	100.0	
1979	39	1,407	3,940	5,050	4,017	2,999	446	17,898	0.2	7.9	22.0	28.2	22.4	16.8	2.5	100.0	
1980	54	1,504	4,589	5,900	4,941	3,628	532	21,148	0.3	7.1	21.7	27.9	23.4	17.2	2.5	100.0	
1981	52	1,371	4,454	5,846	4,854	3,547	513	20,637	0.3	6.6	21.6	28.3	23.5	17.2	2.5	100.0	
1982	69	1,344	4,122	5,408	4,276	3,378	557	19,154	0.4	7.0	21.5	28.2	22.3	17.6	2.9	100.0	
1983	73	1,400	3,481	4,737	4,022	3,350	532	17,595	0.4	8.0	19.8	26.9	22.9	19.0	3.0	100.0	
1984	60	1,242	3,482	4,520	3,729	3,193	500	16,726	0.4	7.4	20.8	27.0	22.3	19.1	3.0	100.0	
1985	38	1,328	3,273	4,291	3,231	2,971	443	15,575	0.2	8.5	21.0	27.6	20.7	19.1	2.8	100.0	
1986	62	1,454	3,647	4,556	3,436	3,084	530	16,769	0.4	8.7	21.7	27.2	20.5	18.4	3.2	100.0	
1987	57	1,450	3,185	3,926	3,005	2,756	450	14,829	0.4	9.8	21.5	26.5	20.3	18.6	3.0	100.0	
1988	68	1,458	3,372	4,073	2,962	2,923	556	15,412	0.4	9.5	21.9	26.4	19.2	19.0	3.6	100.0	
1989	44	1,602	3,486	4,102	2,911	2,858	442	15,445	0.3	10.4	22.6	26.6	18.8	18.5	2.9	100.0	
1990	58	1,718	3,919	4,521	3,278	3,061	472	17,027	0.3	10.1	23.0	26.6	19.3	18.0	2.8	100.0	
1991	139	1,727	3,805	4,407	3,310	3,095	487	16,970	0.8	10.2	22.4	26.0	19.5	18.2	2.9	100.0	
1992	69	1,536	3,257	4,043	2,911	3,027	401	15,244	0.5	10.1	21.4	26.5	19.1	19.9	2.6	100.0	
1993	69	1,624	3,210	3,776	3,593	2,791	456	14,519	0.5	11.2	22.1	26.0	24.7	19.2	3.1	106.9	
1994	71	1,602	3,189	3,929	2,679	2,799	427	14,696	0.5	10.9	21.7	26.7	18.2	19.0	2.9	100.0	
1995	59	1,729	3,034	4,122	2,588	3,036	388	14,956	0.4	11.6	20.3	27.6	17.3	20.3	2.6	100.0	
1996	109	1,810	3,010	3,761	2,722	3,281	450	15,143	0.7	12.0	19.9	24.8	18.0	21.7	3.0	100.0	
1997	91	1,833	3,215	4,151	2,856	3,681	486	16,313	0.6	11.2	19.7	25.4	17.5	22.6	3.0	100.0	
1998	91	1,998	3,409	4,490	2,979	3,872	554	17,393	0.5	11.5	19.6	25.8	17.1	22.3	3.2	100.0	
1999	144	2,072	3,623	4,310	3,030	4,053	687	17,919	0.8	11.6	20.2	24.1	16.9	22.6	3.8	100.0	
2000	100	2,141	3,665	4,263	3,012	4,309	653	18,143	0.6	11.8	20.2	23.5	16.6	23.8	3.6	100.0	

Source: Annual Church Profile and Uniform Church Letter, LifeWay Christian Resource Center, Nashville, Tenn. Compiled by Research Services Team, North American Mission Board, Alpharetta, Ga.

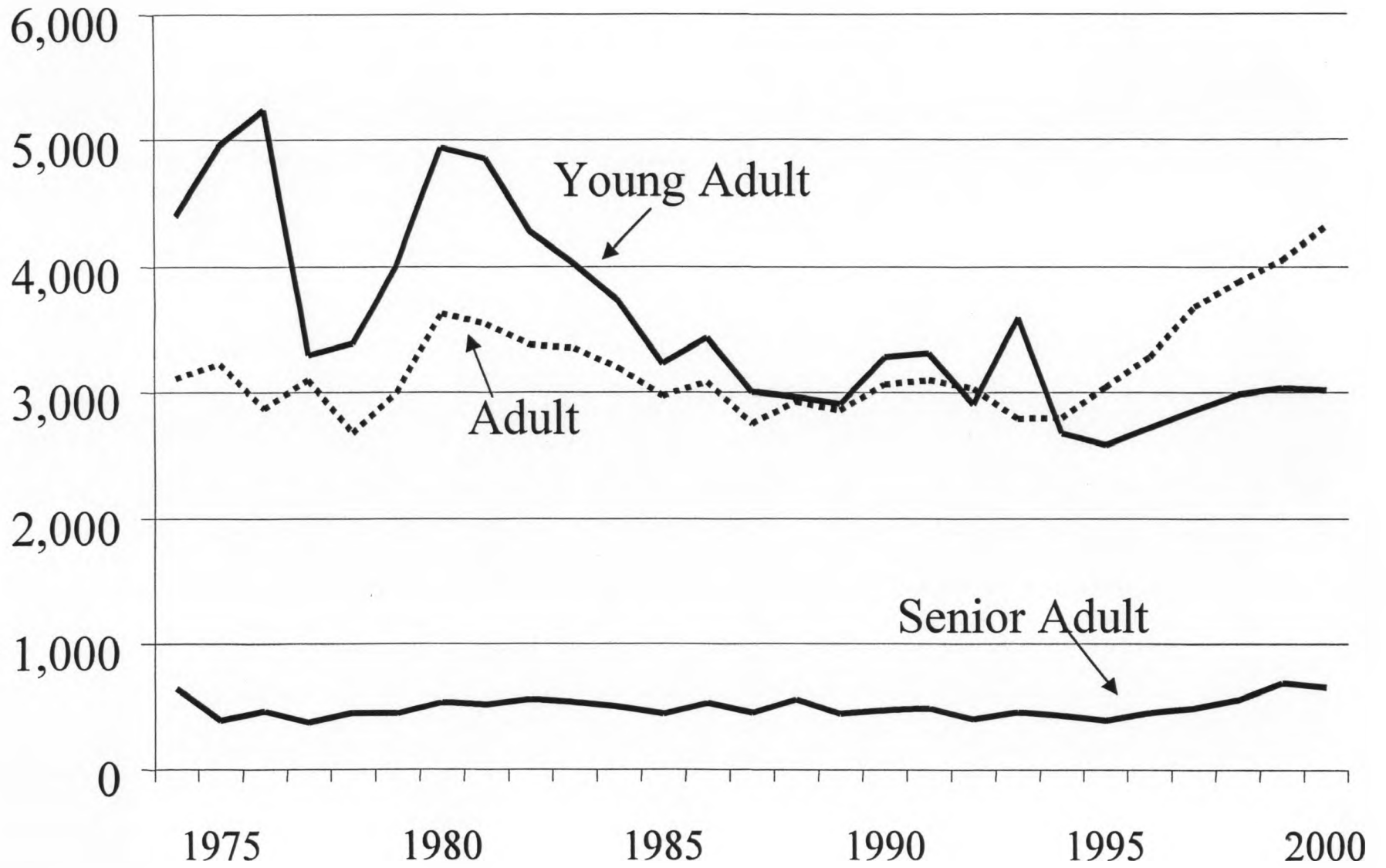
KBC Baptisms by Age Group



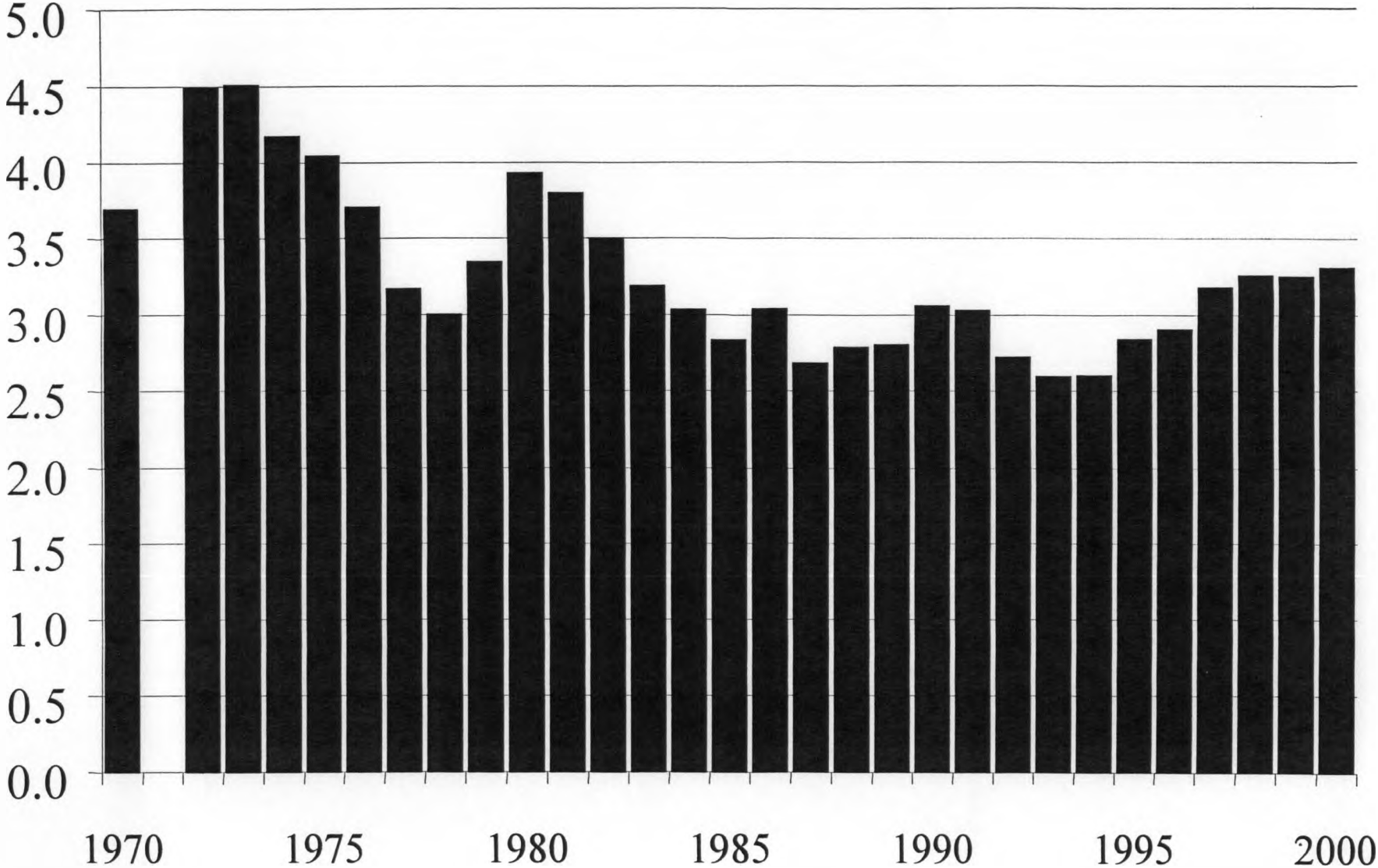
Baptisms by Age Group



Baptisms by Age Group



KBC Baptism Rate Per 100 Resident Members



**Number of Baptisms by Reporting Churches
in the Kentucky Baptist Convention, 2000**

	Number of		Percentage
	Baptisms	Churches	
0	329	16.1 %	
1	184	9.0	
2	179	8.7	
3	146	7.1	
4	147	7.2	
5	127	6.2	
6	106	5.2	
7	85	4.1	
8	76	3.7	
9	71	3.5	
10	71	3.5	
11 or more	<u>528</u>	25.8	
Reporting Churches	2,049	100.0	

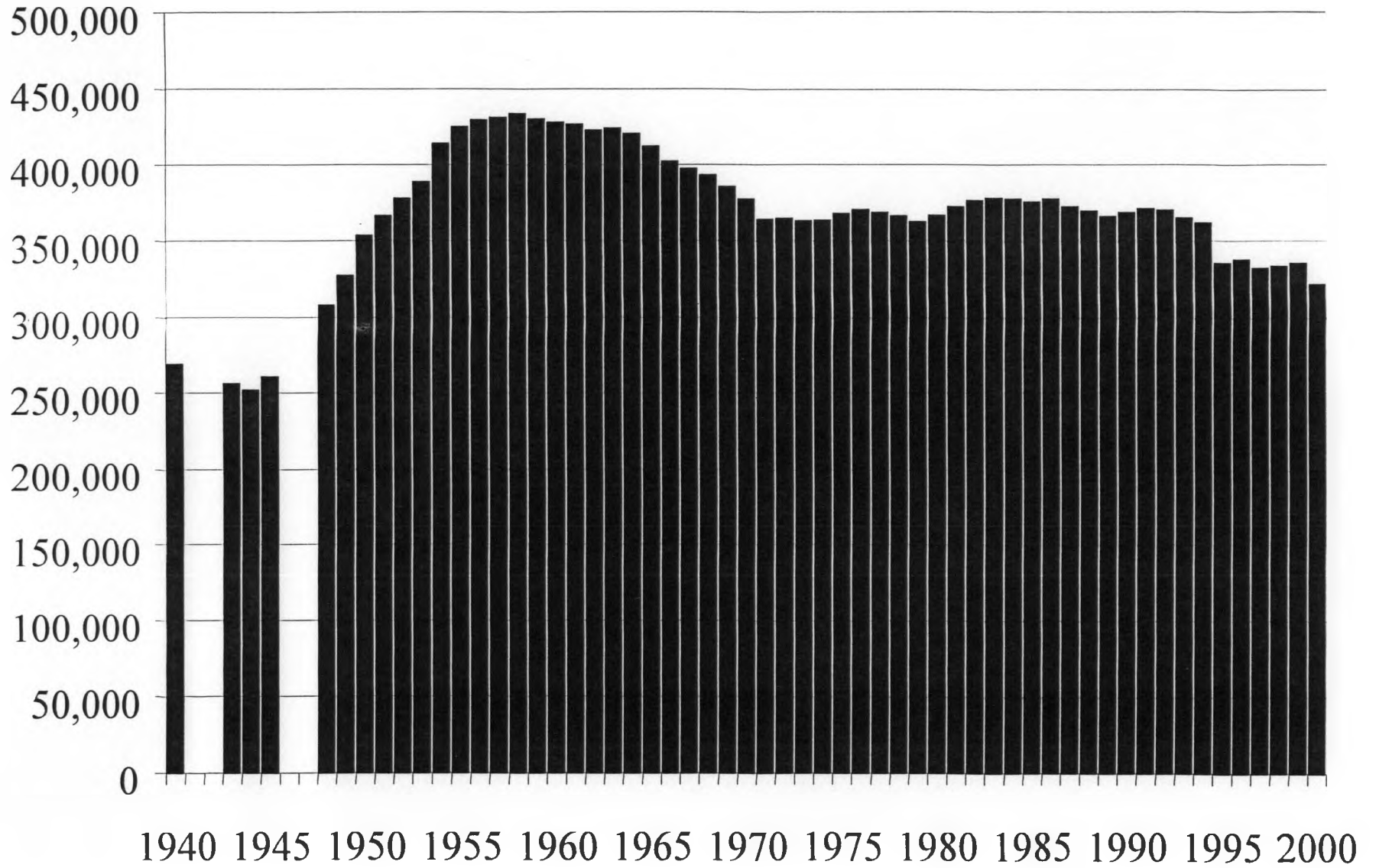
Source: Annual Church Profile, LifeWay Christian Resource Center, Nashville, Tenn.; compiled by Strategic Planning Support, North American Mission Board, Alpharetta, Ga.

**Number of Baptisms by Reporting Churches in the
SBC, 2000**

	Number of		
	Baptisms	Churches	Percentage
	0	6,942	18.6 %
	1	2,932	7.9
	2	2,826	7.6
	3	2,564	6.9
	4	2,290	6.1
	5	2,218	5.9
	6	1,710	4.6
	7	1,534	4.1
	8	1,381	3.7
	9	1,168	3.1
	10	1,132	3.0
	11 or more	<u>10,616</u>	28.5
Reporting Churches		37,313	100.0

Source: Annual Church Profile, LifeWay Christian Resource Center, Nashville, Tenn.; compiled by Strategic Planning Support, North American Mission Board, Alpharetta, Ga.

KBC Sunday School Enrollment



Sunday School Enrollment as a Percentage of Resident Members

