

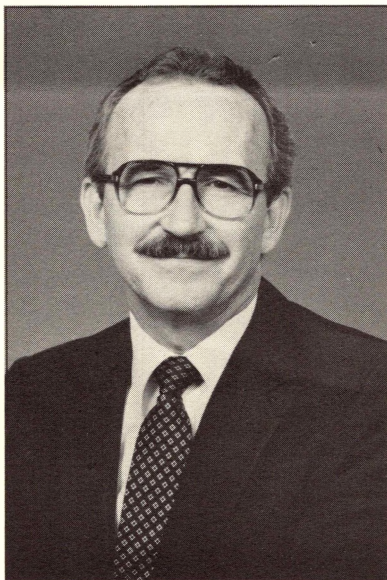


# CHAPLAINCY MINISTRIES NEWSLETTER

Vol. XI

CHAPLAINCY DIVISION, HOME MISSION BOARD, SBC

MAY 1986



## **PERRY ELECTED DIRECTOR**

Huey D. Perry was elected director of the Chaplaincy Division by the Home Mission Board of Directors on March 12, 1986. Dr. Perry came to the Home Mission Board in 1977 as director of Institutional and Business-Industrial Chaplaincy. From 1968-77 he served as a chaplain and director of Chaplaincy Services with the Florida Department of Corrections.

## **FROM THE DIRECTOR**

The Board of Directors of the Home Mission Board elected me director of the Chaplaincy Division effective March 16, 1986. Gratitude is expressed to Dr. William G. Tanner and Dr. Gerald B. Palmer for the confidence they have expressed in me by their recommendation to the Board of Directors.

A word of thanks is due to my partner in marriage of almost 26 years, Donna. She has stood and walked with me—ever the encourager and supporter. We have two daughters who think their dad is a pretty neat fellow. I hope you can come to know my family.

My selection as director has been affirmed by the Chaplaincy Division staff. They have made me feel good. The Home Mission Board staff has given me some good strokes by congratulations.

Perhaps the most encouraging words are coming from you chaplains out in the field. I am grateful for your expressions of best wishes and congratulations. After all, the reason for our being here is you.

I assume the responsibilities with confidence that God, who has brought me to this place, will be with me. It is God who will enable me to give the leadership needed to keep Southern

Baptist chaplains and chaplaincy on the "high road." Will you pray for me?

Where to from here? Those who have gone before have laid a strong foundation. Alfred Carpenter, George Cummins, Jim Kelly, Bill Clark and Carl Hart led us well. But, there is much to be done, so it is time to get on with it.

Will you pray for me? Let me hear from you.

Huey Perry

## **PASTORAL COUNSELORS: A NEW RELATIONSHIP**

The pastoral counselor is a new endorsement category for persons involved in the pastoral counseling ministry full or part-time.

In years past, the Chaplains Commission endorsed Southern Baptist ministers for membership *only* in the American Association of Pastoral Counselors (AAPC). Until the fall of 1985, no Southern Baptist had been endorsed to serve as a pastoral counselor in a specific setting.

Who should seek endorsement as a pastoral counselor? If you are formally involved in providing pastoral counseling on a full or part-time basis, you should be endorsed as a pastoral counselor, serving in that specific setting. Your endorsement in AAPC stands. This is an additional endorsement that more genuinely connects you with Southern Baptists and directly affirms and supports your ministry as a pastoral counselor.

Consider the parallel experience of a Clinical Pastoral Education (CPE) supervisor, who holds endorsement for membership in ACPE as a full supervisor. This endorsement is *only* for membership in ACPE. In addition, this supervisor is endorsed to serve as a chaplain with the General Hospital of Gotham City. As a pastoral counselor involved in full or part-time practice, you would be endorsed as a member (fellow or diplomate) with AAPC and hold a separate endorsement as a pastoral counselor with Gotham City Pastoral Counseling Center.

Bob Duvall

## SEMINARY EXTENSION OFFERS NEW COURSE

Chaplains have a new resource available for training volunteer chaplains and others who minister to sick and grieving persons. Clinical Pastoral Training (CPT) is a 30-hour course recently introduced by the Seminary Extension Department.

Ten sessions of three-hours each, CPT involves video taped presentations and clinical exercises. The course is part of Seminary Extension's college-level curriculum; but "In many respects it is different from any course we have offered before," according to Raymond M. Rigdon, executive director of the Seminary External Education Division.

The seminary professor for the course is G. Wade Rowatt, professor of psychology of religion at Southern Baptist Theological Seminary in Louisville, Ky. Dr. Rowatt is a supervisor in the Association of Clinical Pastoral Education and a diplomate in the American Association of Pastoral Counselors.

Larry Elliott, director of the chaplaincy program of the Florida Baptist Convention says, "Seminary Extension's new CPT course offers the best practical training in the shortest time at a minimal cost for both lay and ordained volunteer chaplains."

Address inquires to: CPT Course, Seminary Extension Department, 901 Commerce Street, Suite 500, Nashville, TN 37203, or call Dr. Paul Robertson, (615) 242-2453.

## DIALOGUE 88

Walking through the Vieux Carre of New Orleans was a Lutheran chaplain, a Jewish rabbi, a Christian Reform chaplain and a Southern Baptist chaplain. What's reportable here is not clergy in the French Quarter, a common occurrence. The intriguing element is what brings together such a divergence of clergy.

The pulling together is the Council on Ministry in Specialized Settings—COMISS. Since 1979, COMISS has brought together 23 religious endorsing body representatives, 12 pastoral care organizations, three consumer groups and the National Conference on Ministry in the Armed Forces.

Out of COMISS, a dream has been taking shape. The dream is Dialogue 88 to convene October 29-November 4, 1988, in Minneapolis, Minnesota. Dialogue 88 will pull together religious endorsing body representatives, denominational and faith group leaders, pastoral care organizations, using agencies of pastoral care and *you*, the practitioners of pastoral care, counseling and education.

Dialogue 88 will gather these divergent peoples to a place and time of dialogue, hunkering and futuring concerning the mission of pastoral care, counseling and education in the closing years of this century. Around these themes a mission for Dialogue 88 is forming. Dialogue 88 will be:

- A time and place of dialogue and collaboration.
- Defining the pastoral care community's mission in the world, particularly on the boundary of religious and secular.
- An experience of professional identity, inclusive of our diversity.
- Utilizing resources of the pastoral care community to address critical public issues.
- An interreligious model and symbol before denominations

and faith groups.

- A celebration of the potential for the pastoral care community in America to form a connective federation.

Three pastoral care organizations will anchor Dialogue 88 with their annual conventions—National Association of Catholic Chaplains, the Association for Clinical Pastoral Education and the National Institute of Business-Industrial Chaplains. Also, the North Region of American Association of Pastoral Counselors will hold its regional retreat in conjunction with Dialogue 88. The pull to participate is strong. Do come.

Bob Duvall

## EXCITING MILITARY MINISTRY

Chaplain (Maj) Joe B. Mizzell, Pastor of the Alberta Baptist Church, Tuscaloosa, Ala., was somewhat concerned about his new assignment with the Alabama Army National Guard. He had served more than 13 years with a unit in Tuscaloosa. With his assignment to COSCOM Headquarters, located in Birmingham, he wondered if he could conduct an early worship service at the Armory and return to Tuscaloosa in time to teach a Sunday School class at 9:45 and conduct the 11:00 o'clock worship service at his church. After meeting with the Commander, Chaplain Mizzell's anxieties were removed.

On Chaplain Mizzell's first Sunday at the Armory, the commander introduced the chaplain, gave his personal testimony and committed himself to the chaplains ministry.

In his previous assignment, Chaplain Mizzell would occasionally bring someone in from a local church to provide special music for his worship service. At the suggestion of the commander, the music director formed a choir of military personnel. This has become a well organized choir that may be the only choir in the Army National Guard.

Because of the emphasis upon readiness and the necessity of maintaining a large Reserve and National Guard force, ministers who serve both churches and the military are extending the churches' spiritual activities to people and places that might otherwise be unreached.

Many Southern Baptist ministers have responded to this dual ministry of serving God and country.

Pastors who serve as Reserve chaplains are required to exercise a unique commitment as they provide Christian witness and caring. They are, in a sense, soldiers on two fronts, serving the church and military. In this dual capacity, they must stretch themselves to insure adequate spiritual coverage. Our Reserve, National Guard and Civil Air Patrol chaplains are performing a vital and necessary mission for Southern Baptists.

Military chaplaincy is alive and well because our Southern Baptist chaplains continue to be about the "Father's business." Their faithfulness in proclaiming Christ's Word and sharing their personal faith is keeping chaplaincy on the cutting edge of ministry. Their commitment to serve in the "utmost parts of the world" is fulfilled as they accept their assignments.

Pat Davis  
Lew Burnett

## QUARTERLY REPORTS TELL CHAPLAINCY STORY

Quarterly Reports from Southern Baptist-endorsed chaplains provide statistical data for the Chaplaincy Division's Annual Report and help tell the chaplaincy ministry story to other SBC agencies and to Southern Baptists across the Convention. The following is a recap of Part II of the Annual Report, which gives activities of full-time and part-time chaplains during 1985:

Worship services	51,632	Visits	1,513,523
Bible classes	33,436	Counseled	346,894
Prayer services	12,001	Professions of Faith	12,457
Sunday Schools	14,473	Baptisms	2,909
Vacation Bible Schools	432	Weddings	3,440
Religious Instruction	13,455	Funerals	3,217
Lay Leadership Training	4,612	Other Activities	31,096

If a Quarterly Report is not received from all endorsed chaplains, the statistical information is incomplete and does not reflect accurately the extent to which chaplaincy ministry is being accomplished. Unfortunately, the annual report above does not include reports from many Southern Baptist endorsed chaplains.

In March, some changes were announced in the Quarterly Report form; and a request was made for your comments and suggestions prior to final adoption. As indicated in our letter of March 12, information on the form has been included so that we can be responsive to requirements for statistical and other information for use within the Chaplaincy Division and within the Home Mission Board and SBC. Suggestions from the field have been very constructive and we greatly appreciate the input provided.

We do need to reemphasize how important it is to receive this statistical information on time as, together, we attempt to tell the exciting and challenging chaplaincy story.

Royce Williams

### DID YOU KNOW:

That the Chaplains Commission approved 423 endorsements in 1985?

That of 56 Southern Baptist chaplains endorsed to active duty in 1985, 43 received their commission?

That 35 Southern Baptist chaplains were endorsed for full-time civilian chaplaincy positions in 1985?

That there are currently 448 Southern Baptist chaplains on active duty in all military branches and 617 full-time civilian chaplains?

### RELOCATION ASSISTANCE

The Chaplaincy Division cannot function as a "placement center"; however, on occasions, chaplaincy opportunities become known to us. Attempts are made to put interested individuals in contact with appropriate persons or offices. Several military chaplains, for example, are successfully serving a second career in other chaplaincy ministry areas after retiring from the military.

The Chaplaincy Division also assists chaplains in relocating

by providing reference or recommendation letters. The chaplain should provide this office with the name and address of specific churches, search committees or institutions if letters of recommendation are needed from this office. A typed resume and recent photograph would be beneficial.

For further information on relocation assistance, get in touch with this office.

## WHO CARES

*Luke 10:25-37*

*A sermon outline by Dr. William G. Tanner, delivered at the Southern Baptist Convention in Dallas, June 1985.*

### INTRODUCTION

The story of the Good Samaritan begins in a theological controversy and ends in a description of first aid on a roadside. It arises with the question of eternal life and works itself out in payment for room and board at an inn. The Son of God used this occasion to tell a story that has taught us all how to care.

#### A HURTING LAND (A Certain Man)

1. "A certain man" is an analogy of many hurting people in our land.
2. Our nation is a montage of confused, searching people; and they are our responsibility.
3. There are many people around us, who are lying in the ditch and are spiritually bleeding to death.

#### A HESITANT CHURCH (The Non-involvement Attitude of the Priest and the Levite)

1. The first man was a leader of the church; his job was to talk about religion.
2. The second man was a Levite, literally born to serve the church.
3. Many of us are part of a hesitant church that has a totally defective sense of individual responsibility.

#### A HEALING STRANGER (A Certain Stranger)

1. The first thing that made the Samaritan a healing stranger was a pair of good eyes; he was able to see one person at a time.
2. The good neighbor's next move was to "get personal."
3. The Son of God wants to go out on the city streets and mix and mingle with the crowds of irreligious because he loves them, but he will never get to the streets of your community unless you go there.
4. When the story was finished, the Master recommended something very practical that applies right now, "Go, and do thou likewise."

### CONCLUSION

We live in a hurting nation. We are God's appointed agents for touching the lives of our neighbors with the healing message of God's love.

### TANNER TO SPEAK AT BREAKFAST

Dr. William G. Tanner will speak at the chaplains breakfast on Wednesday morning, June 11, 1986, during the Southern Baptist Convention. The breakfast, hosted by the Chaplaincy Division, will be at 7:00 a.m. at the Ramada Capital Plaza in Atlanta. Reservation tickets will be available at the Home Mission Board Convention exhibit.

## SOMETHING TO THINK ABOUT

Outline of an address by Sara Ann Hobbs  
at Southeastern Baptist Theological Seminary  
Chaplains Conference, February 11, 1986

Chaplains are a part of the Southern Baptist family.

### I. YOU NEED YOUR DENOMINATION.

1. Inspiration of your heritage—roots from which you have sprung, influences that have shaped the denomination.
2. It gives you the stability of family.
3. It provides resources.
4. It provides the channel for your mission commitment.
5. It authenticates God's call and offers support.

### II. YOUR DENOMINATION NEEDS YOU.

1. You (chaplains) keep us sensitized to the larger Christian community.
2. You take us into places where people live their daily lives. You are, in a sense, our way, as Baptists, of escaping the judgment of Matthew 25.
3. Deal with people in crisis situations and unusual circumstances who, by virtue of this, are removed from the mainstream Southern Baptist church.
4. You can be, and are, a significant part of Baptists' worldwide impact.

### CONCLUSION

For a large number of Southern Baptists, and for myself, I say,  
THANK YOU.

*Hobbs is director of missions, Baptist State Convention of North Carolina.*

### 1986-87 DATES

1986 6-18

June 10-12 Southern Baptist Convention, Atlanta, Georgia

June 11 Chaplains Breakfast, Ramada Capital Plaza, Atlanta

June 30 July 2 Justice & Mercy Conference, Wheaton Ill.

July 6-12 Chaplains Conference, Ridgecrest, N.C.

July 7-11 International Conference of Police Chaplains, Topeka,

13-17 Kans Cincinnati  
July 24-30 Chaplains Conference, Glorieta, N.M.

August 0-11 American Correctional Chaplains Conference, Las

8-13 Vegas, Nev. NEW ORLEANS

September 18-21 Chaplains Orientation, Atlanta, Ga.

10-13 (by invitation)

✓ October 5-11 ACPE, Atlanta, Ga.

October 21-24 FORSCOM/TRADOC Chaplains Conference, St. Louis, Mo.

October 29-31 Fifth Army Chaplains Conference, San Antonio, Tex.

December 4-5 JIPCO/COMISS, Washington, D.C.

December 8-12 Second Army Chaplains Conference

1987

June 16-18 Southern Baptist Convention, St. Louis, Mo.

July 11-17 Chaplains Conference, Ridgecrest, N.C.

August 1-7 Chaplains Conference, Glorieta, N.M.

Additional dates will be printed in next newsletter.

The Chaplaincy Division will have a staff member at each of these events.

## A GLIMPSE OF REAL POWER

Things are not always what they seem to be. Perhaps this is never more true than in our estimates of real strength and weakness.

When my wife, Mary, and I reflect together on this spiritual principle, we are reminded of the hike we took around a mountain lake. The hike had been tiring for me and somewhat painful. Just two months earlier, physicians had found large malignant tumors in my body. The effects of the disease and the treatment made the hike difficult, but the emotional effects of all of this made it seem important to get out and enjoy each other, loving friends and the beauty of the scenery.

As we stood on the far side of the lake and looked back at the mountain, our friend, Myrna, asked, "What's the matter? Is something wrong?"

The walk around the lake had lifted my spirit considerably. A slight breeze raised small, friendly-looking waves that made sparkling play with the sun's rays. Dark-green fir trees spired more than a hundred feet into the cloudless sky. A dominant snowcapped peak stood sentinel as background to the scene. The couple we were with was easy to respect and like.

As we reached the far side of the lake, we discovered a rustic lodge hidden in the trees at the foot of a waterfall. It was situated so lodgers could have the best view of the lake and mountain. It could be reached only by water or by hiking trail. It was special.

Mary inquired about reservations. She thought it would be a fine place for a restful family vacation. Upon learning that the nearest open time was one year from the present week, she talked with the manager about reserving that time. The rest of us wandered toward the shore.

Myrna asked me again, "What's troubling you?"

I replied, "The mountain, the lake, the trees. They all seem to be based on the very foundations of the earth. Because of this disease, my life seems to be hanging from a hair. Mary is in there making reservations for next year. I may not even be here (on this earth) next year."

I had not forgotten that God cares and that the church was praying for my recovery. But that all seemed quite airy next to the solidness of the scene before me.

We never did get to use our reservations that next summer. I was "here"; Harmony Falls Lodge was gone. So was the lake. The fir trees were gone too. Even the mountain was gone, at least in its centuries-old form. Mount St. Helens had blown Spirit Lake and Harmony Falls Lodge away.

It still seems odd, at times, even funny. What seemed so solid and strong is gone. What seemed so shaky and weak remains.

Scripture—"His voice then shook the earth; but now he has promised, "Yet once more I will shake not only the earth, but also the heaven." This phrase, "Yet once more," indicates the removal of what is shaken . . . in order that what cannot be shaken may remain. Therefore, let us be grateful for receiving a kingdom that cannot be shaken, and thus let us offer to God acceptable worship, with reverence and awe. (Hebrews 12:26-28)

Peter Niewick  
Assistant Executive Secretary of Chaplaincy  
Christian Reformed Church of North America

**A REMINDER**

Check-in at Ridgecrest and Glorieta Baptist Conference Centers begins at 1:00 p.m.

Ridgecrest—July 6 (Sunday)  
Glorieta—July 24 (Thursday)

Conference sessions for chaplains and spouses:

Ridgecrest—Sunday—6:15-7:15 p.m.  
Mon.-Fri.—9:00-12:00 Noon

Glorieta—Sunday—6:15-7:15 p.m.  
Fri., Sat., Mon., Tues.—9:00-12:00 Noon

**IN MEMORIAM**

LT Drury H. Christian, CHC, USN  
Marine NAS, El Toro  
Santa Ana, California  
Died: March 6, 1986  
Survived by: mother, Dorothy Neas  
Drury was endorsed to the U.S. Navy in 1983, and served aboard the USS MARS prior to his assignment to Marine NAS, December 1985.

Chaplain Bill B. Bailey  
Central Baptist Hospital  
Lexington, Kentucky  
Died: February 25, 1986  
Survived by: wife, Carole, and daughter, Amy  
Bill was endorsed in 1968, to Kentucky Baptist Hospital, Louisville, and in 1971, to Central Baptist Hospital.

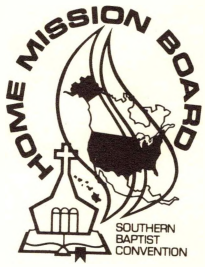
**CHAPLAINCY DIVISION STAFF**

Director—Huey D. Perry  
Administrative Assistant—Royce C. Williams  
Director Military—Pat H. Davis  
Associate Director Military—Lewis G. Burnett  
Director Hospital—Robert W. Duvall  
Executive Secretary—Beth Baker  
Secretary Hospital—Nan Robbins  
Secretary Military—Tammy Dent  
Secretary Institutional/Business-Industrial—Susan Smith

SOUTHERN BAPTIST HISTORICAL  
LIBRARY AND ARCHIVES  
Nashville, Tennessee

Home Mission Board, SBC  
1350 Spring Street NW  
Atlanta, GA 30367-5601

Non Profit Org.  
U.S. POSTAGE  
PAID  
PERMIT NO. 434  
ATLANTA, GA.



Chaplaincy Division

A Southern Baptist Convention agency  
supported by the Cooperative Program  
and the Annie Armstrong Easter Offering