

CHAPLAINCY MINISTRIES NEWSLETTER

Vol. XIII No. 2

CHAPLAINCY DIVISION, HOME MISSION, SBC

August 1988

PAUSING

I remember Dorothy. She was in a group of new inmates who had arrived within the past few days. The inmates had come to the chapel for orientation. Dorothy was different. She was not in her attire. She was wearing the state-issued dress. In fact, it was the color for inmates to wear for the orientation process.

I remember Dorothy. In the personal interview, she began to share her story. A Christian she had been for many years. She had been a pastor's secretary, a church pianist, a children's leader and had served in many other ways in her church. But now, she was facing a five-year prison sentence.

I remember Dorothy. She was a wreck emotionally and spiritually. She continued to share her story and, as she did, I walked through the open door to do the gospel. It was an opportunity to do ministry. In walking with Dorothy during those initial days of incarceration, listening to her, weeping with her, praying with her—just being with her—I eventually had the opportunity to tell her the gospel. Once again, I witnessed what the gospel applied could do in the life of an individual.

I remember Dorothy. But also, I remember Jean, Bill, Rufus, Beth, Matilda, Carolyn, Steve and hundreds of others in prison where God privileged me to serve as chaplain. Those were days of adventure in ministry and witness; opportunities to do and tell the gospel. Times have not changed. Each day brings opportunity for each of us involved in chaplaincy to experience an adventure in ministry and witness.

Huey D. Perry

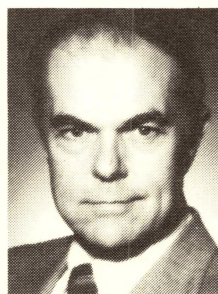
DAVIS' RETIREMENT

Pat H. Davis, director of Military Chaplaincy, has been a Chaplaincy Division staff member since April 1975. He will retire December 31, 1988. Davis has given outstanding service to Chaplaincy and Southern Baptists.

DIRECTOR—ELECT OF MILITARY CHAPLAINCY

Lewis (Lew) G. Burnett, associate director of Military Chaplaincy, joined the Chaplaincy Division staff January 1985. He was elected as director of Military Chaplaincy, effective January 1, 1989. Burnett was elected by the Home Mission Board's Board of Directors on March 16, 1988.

WOODRUFF ELECTED EXECUTIVE DIRECTOR, AAPC



C. Roy Woodruff was elected executive director of the American Association of Pastoral Counselors at their annual meeting in Portland, Oregon, April 27-30, 1988. He will assume these duties in Fairfax, Virginia, on September 1, 1988. Woodruff has been an associate pastor, hospital chaplain, Clinical Pastoral Education supervisor, seminary professor and presently serves as executive director, Peninsula Pastoral Counseling Center, Inc., Haughton, Virginia.

HICKMAN ELECTED APHA TRUSTEE

Chaplain Elaine Hickman, director of pastoral care, Brookwood Medical Center, Birmingham, Alabama, was elected to the Board of Trustees of the American Protestant Hospital Association. Hickman's election came at the annual meeting of the College of Chaplains in San Francisco, February 28-March 2, 1988.

Hospital Chaplaincy: ADVENTURE IN WITNESS AND MINISTRY

While supervising three seminarians a few years ago, I was put in touch with adventure in witness and ministry. My instruction to these three young people was, "Remove your badges and any other religious paraphernalia and walk about the hospital as the typical visitor." They were to refrain from acting out their pastoral identity and call. In our next interpersonal relationship (IRP) group, we processed what they brought.

The next week, I heard stories of encounters with people in waiting areas, corridors, elevators, and in the cafeteria. They spoke of sensitivity to the effect of their encounters. They sensed joy and elation at the nursery window, fear and hysteria in the emergency unit, and warmth and indifference from other visitors and staff. The overriding emotional tone I sensed from them was frustration, anger and disappointment. *Why?* They were unable to act out their call to witness and minister.

Needless to say, they effected change when they returned to the cafeteria to the patient areas, waiting rooms and nurses' stations with a sense of witness and ministry. The change they effected in

witness and ministry became the test for the rest of their clinical experience. Amid patients' sense of distance from God, self, family and wholeness, they heard the whys of suffering. They saw themselves as channels through whom God worked to "make sense out of nonsense of illness." "Heaven and earth were brought together," to use a term from Myron Maden. The human spirit resonated with the Holy Spirit. Words of witness, ordinance, Scripture and prayer took on new vitality. And unity began to evolve internally, relationally and spiritually. Affective biological and cognitive took on harmony.

Therefore, witness and ministry "took on flesh and dwelt among" sufferers and caregivers. And William Oglesby's words, "We will not all be cured but we will all be healed" became foundational with these young people.

To have some part in the adventure of witnessing and ministering is a source of great joy, thus my gratitude.

Goodwill,

Paul Stephenson

P. Remember those Dialogue '88 reservations

Military Chaplaincy: ADVENTURE IN WITNESS AND MINISTRY

"Serving as a chaplain in the military is both demanding and exciting"—A phrase often heard from Southern Baptist chaplains serving in all types of military environment around the world: Army, Navy, Air Force, Marines, Coast Guard, Reserves/National Guard and Civil Air Patrol.

Chaplains make a difference. Early in their career, chaplains discover that opportunities are virtually unlimited to witness for our Lord, proclaim the word of God and minister to individuals within a diversified, pluralistic and mobile society. As spiritual leader, counselor and friend, chaplains who remain highly visible and available to minister will discover, or create, new and innovative ways to assist military personnel and their families at the most exciting and vulnerable points in their lives. Whether the need arises during a personal or family crisis or when making a difficult decision, the chaplain can make a difference.

One meaningful way the chaplain may discover adventure in witness and ministry is through "living-out" the faith. While verbalizing of one's theology is important, one's lifestyle is more easily interpreted and understood by those with whom the chaplain works.

Ministry can be described in many ways. It can be described as the embodiment of the old and ever-contemporary story that God loves the world and is in the process of redeeming it. If so, chaplains who translate the story of God's love through "word and deed" will find adventure in witness and ministry where they serve.

Pat Davis

Chaplaincy: ADVENTURE IN WITNESS AND MINISTRY

What's a guy like me doing in a place like this?

About two minutes after I set foot in Plant 36 at the Buick-Oldsmobile-Cadillac complex in Flint, Michigan, I was ready to put both feet outside! It was noisy, huge, and I was overwhelmed! I had been called to be the chaplain, but did that mean I had to be chaplain in that setting?

The first time the officer switched on the blue light and siren and the scoutcar began a careening ride over the surface streets of

Detroit, Michigan I wanted to ask if I could get off at the next corner and wait for him to come back and pick me up later. I was the police chaplain, but I think I had envisioned a somewhat more serene setting for my ministry when I signed on.

Chaplaincy is ministry where the action is. Chaplains go where the people are and often, this means ministry and witness will take place in unusual settings and unique circumstances.

Consoling a father on a river bank, who has just seen his eight-year-old son's body pulled from the water; talking at a dining-room table with a wife who has just fatally wounded her husband; and discussing the value of life with a 17-year-old youth perched precariously on the edge of a seventh-story roof—these have been settings of ministry for me.

On battlefields, in hospital wards, behind high brick walls of prisons and on carrier flightdecks, you will find chaplains. Today, Southern Baptists have almost 2,000 chaplains, serving in many different settings and ministering to thousands of people. These places are unlike traditional church buildings.

Often, it takes a little "getting-used-to." Most chaplains probably ask the same question I asked when I first encountered a rather non-traditional setting for my ministry: "What's a guy like me doing in a place like this?" They all, or most of them, answer it like I did: "God called me here. And now I know that chaplaincy is something special. It is an adventure in ministry."

Lowell Lawson

Institutional Chaplaincy: ADVENTURE IN MINISTRY AND WITNESS

If we could say "witness and ministry" in one word, it would settle the argument about priorities. Perhaps even greater is the temptation to make people our "target for today" through various programs and strategies. Often, our motive becomes the fulfillment of a program goal or the successful completion of a strategy rather than a genuine interest in people placed in God's world.

Recently, I walked into a prison chapel. The inmate sweeping the floor looked vaguely familiar. He shook my hand, then hugged me. He remembered. We first met in 1975, in a maximum security prison during a time of inmate unrest. I had received word of the death of this man's grandmother, the woman who had raised him.

At my request, the guards brought him to my office. I gave him the bad news and then made a telephone call to his family so he could talk to them. Then I called the funeral home regarding his attending at the services. For the next two hours we talked, amid the angry sounds of near-rioting inmates pounding the steelbars of cell-house doors. The conversation was about broken trust, school problems, dangerous relationships and spiritual confusion.

Finally, after we prayed, he went back to his cell. Not long after that, he was transferred to another prison. I did not see him again until this day in the chapel. He is faithful in his chapel responsibilities. He tells me he is a follower of Christ. He says it began with a two-hour conversation in the office of a chaplain who took him seriously. I suspect it started long before then and was nurtured by many along the way.

There are thousands of people who are sharing the adventure of witness and ministry in many settings and in many ways. It may not look like it in print, but witness and ministry are really one word.

Billy D. Donovan

Missions Development: ADVENTURE IN WITNESS AND MINISTRY

A great deal of emphasis and programming at the Home Mission Board in the past two years has been placed on Missions Development in churches and associations. Association and church Missions Development programs are under the staff responsibility of J.B. Graham, assistant vice president, Home Mission Board, Missions. Several state conventions have shared in this emphasis in and promoting chaplaincy through Missions Development. I am reminded of many Bible references when thoughts and words took concrete form, as in John 1:14, *"And the Word was made flesh, and dwelt among us, (and we beheld his glory as the glory of the only begotten of the Father), full of grace and truth."* Another is the time when Jesus was followed by two blind men crying, *"Thou Son of David, have mercy on us"* (Matt. 9:27). Jesus said, *"Believe ye that I am able to do this? They said unto him, Yea, Lord, Then touched he their eyes, saying, According to your faith be it unto you"* (Matt. 9:28-29).

Often a Christian's impulse is the human impulse—to draw away from opportunities to minister to those of the world, the perceived undesirables, those less fortunate, those sick and diseased. Jesus did not draw away, and Chaplaincy does not turn away. When the leper said to Jesus, *"Lord, if thou wilt, thou canst make me clean"* (Matt. 8:2). Leprosy, then, was viewed much as AIDS is today. Yet, *"Jesus put forth his hand, and touched him, saying, 'I will; be thou clean'"* (Matt. 8:3), and his leprosy was cleansed. Healing and cleaning took place because of Jesus' love and power and because the thought was formed in the minds of those involved that miracles were possible. Miracles still happen as we are willing to let the Lord work through us.

Chaplain Joe Williams, associate director of chaplaincy for the Baptist General Convention of Oklahoma, wrote recently, "As I passed by the fair grounds and observed how deserted it appeared, compared to the way it would be in a few weeks, as thousands of people would be crowded into this rather small area, I thought, the state fair of Oklahoma needs a chaplain!" From this thought by Chaplain Williams, a chaplaincy ministry project became reality as he and about 25 pastors and laypeople ministered to more than 4,000 of the 1.6 million people who passed through the Oklahoma State Fair Grounds in September and October, 1987. The lives of many were touched and blessed as associations and churches found ways to minister and witness through chaplaincy.

The experiences of Chaplain Williams and those who assisted him are available in a Chaplaincy Ministries Development Project Model, which includes actions taken to initiate projects and guidelines; letters to pastors and others and an order of worship for an interfaith service. This is an excellent model for initiating chaplaincy ministry projects and programs and as a means of extending your own witness and ministry as opportunities and circumstances permit.

You should enjoy reviewing this ministry. Order Chaplaincy Ministries Development Project Model—Oklahoma State Fair by Joe B. Williams, associate director of chaplaincy for the Baptist General Convention of Oklahoma. Also, if you have a thought for initiating and developing a chaplaincy ministry, drop a note or call Lowell Lawson, Coordinator, Chaplaincy Ministries Development, 14124 Arcola, Livonia, MI 48154, telephone 313-525-2851, or contact the Home Mission Board's Chaplaincy Division.

Royce Williams

WOMEN'S GATHERING BEFORE DIALOGUE '88

The imagery task force for the women's gathering in Minneapolis on October 29-30 prior to Dialogue '88, October 30-November 4, asks all women—both those who will attend and those who will not attend—to consider the theme, "Healing Woman—At the Threshold," and the question, "What artwork could you use to touch your own inner dynamic of healing?" The task force has been commissioned to collect written and visual images that reflect aspects of women as healers in the pastoral care ministry. These images may come from personal experiences, legends, the Bible, stories about colleagues or religious traditions. Visual creations may be created in tapestries, clay, needlework, collages, photographs, paintings or sculptures. Written creations may be in poetry, story or song lyrics. Colors, shapes, sounds and healing touches, which represent all the senses, may be freely incorporated in the images. There are no restrictions on size or medium.

Women may contribute images individually or work with families, congregations or colleagues. The emphasis, in these creations, is on healing images that arise within. Participants are encouraged to record their feelings while working on images. The task force chairperson is The Reverend Terry Ruth Culbertson, a Fellow of the College of Chaplains and recent chairperson of The Council for Public Concerns, 515 Elm Avenue, Takoma Park, MD 20902, (301) 270-0453. She can be contacted about participating in this project. By this summer, the steering committee should know what contributions to expect to effectively incorporate them into the gathering. A slide or paragraph about the image should be sent to Chaplain Beth Burbank, Department of Religion and Health, Rush—Presbyterian St. Luke's Medical Center, 1653 W. Congress Parkway, Chicago, IL 60612.

IN MEMORIAM

Chaplain J. Paul Howard

Route 3, Box 77, Oxford, MS 38655

Died: December 7, 1987

Survived by wife, Jewell; daughters, Patricia and Jennifer
Paul was endorsed as a Civil Air Patrol chaplain in 1985.

Chaplain Robert M. Newton

2805 Adios Court, Lexington, KY 40511

Died: February 16, 1988

Survived by: wife, Debbie

Newton was endorsed as a pastoral counselor in May 1982.

Chaplain Dewie E. Williams, Retired

3508 Apple Street, Pine Bluff, AR 71603

Died: April 9, 1988

Survived by: wife, Freda; daughter, Carol

Williams was endorsed to the Civil Air Patrol chaplaincy in 1969 and to institutional chaplaincy in 1970.

Chaplain L. Randall Stout

5218 NW 23rd Place, Gainesville, FL 32605

Died: April 16, 1988

Survived by: son, Dan; parents, Mr. and Mrs. Leslie B. Stout

Stout was endorsed to the following:

Part-time Hospital Chaplaincy—1976

Army Reserve Chaplaincy—1977

College of Chaplains—1978

American Protestant Hospital Association—1978

Full-time Hospital Chaplaincy—1978

Chaplain H. Dale Wright

201 W. 70 Street, Kansas City, MO 64113

Died: May 2, 1988

Survived by: wife, Barbara

Wright was endorsed to these chaplaincies and professional organizations:

Army Reserve—1965

American Protestant Hospital Association—1967

Association of Clinical Pastoral Education—1969

Hospital Chaplaincy—1973 and 1975

American Association of Pastoral Counselors—1974

Clyde M. Johnston

328 Olive, Huntsville, TX 77340

Died: May 12, 1988

Survived by: wife, Nell; son, Michael; daughter, Martha; two step children, Kent and Paulette

Johnson was endorsed to Institutional Chaplaincy in 1961.

INSURANCE FOR CHAPLAINS

All full-time chaplains and pastoral counselors, who have no group participation in health insurance or life insurance, are eligible to participate in the Pastors Plan of the SBC Annunity Board. Inquiries can be directed to Wilson Mathews, Employee Benefits, HMB, 1350 Spring Street NW, Atlanta, GA 30367-5601.

Chaplaincy Division Staff

Director—Huey D. Perry

Administrative Assistant—Royce C. Williams

Director, Military Chaplaincy—Pat H. Davis

Associate Director, Military Chaplaincy—Lewis G. Burnett

Director, Institutional/Business Industrial Chaplaincy—

Billy D. Donovan

Director, Hospital Chaplaincy—Paul G. Stephenson

Coordinator, Chaplaincy Ministries Development—Lowell

F. Lawson

Executive Secretary—Beth Royal

Secretary, Hospital Chaplaincy—Nan Robbins

Secretary, Institutional/Business Industrial Chaplaincy—

Tonya Askew

Secretary, Military Chaplaincy—Yvonne Rice

Secretary/Data Entry Clerk—Dorothy South

HOME MISSION BOARD, SBC

Chaplaincy Division

1350 Spring Street NW

Atlanta, GA 30367-5601

A Southern Baptist Convention agency
supported by the Cooperative Program
and the Annie Armstrong Easter Offering

For general information or to order
materials, call the Home Mission Board's
Customer Service Center, 1 800 634-2462

1988 EVENTS

- Aug. 13-18 American Correctional Chaplains
Conference, Denver, Colo.
Oct. 30-Nov. 4 Dialogue '88, Minneapolis, Minn.
Oct. 30-Nov. 4 Association of Clinical Pastoral
Education, Minneapolis, Minn.
Nov. 1-3 Second Army Chaplains Conference,
Camp Blanding, Fla.
Nov. 14-19 Fifth Army Chaplains Conference, San
Antonio, Texas
Nov. 28-Dec. 2 FORSCOM/TRADOC Army Chaplains
Conference, St. Louis, Mo.

1989 EVENTS

- Jan. 8-11 Race Track Chaplains of America,
Orlando, Fla.
Jan. 10-13 Sixth Army Chaplains Conference,
Portland, Ore.
Jan. 16-18 ACA, ACCA, APCCA, Mid-winter
Conference, San Antonio, Texas
Jan. 30-Feb. 2 First Army Chaplains Conference,
Baltimore, Md.
Feb. 14-15 Southeastern Seminary Chaplains
Conference, Wake Forest, N.C.
Feb. 14-17 Fourth Army Chaplains Conference,
Skokie, Ill.
Feb. 21-22 Southwestern Seminary Chaplains
Conference, Fort Worth, Texas
Feb. 28-Mar. 1 Southern Seminary Chaplains
Conference, Louisville, Ky.
Feb. 28-Mar. 1 New Orleans Seminary Chaplains
Conference, New Orleans, La.
Mar. 11-15 APHA College of Chaplains, St. Louis,
Mo.
Mar. 14-15 Golden Gate Seminary Chaplains
Conference, Mill Valley, Calif.
Mar. 28-29 Midwestern Seminary Chaplains
Conference, Kansas City, Mo.
April 5-9 American Association of Pastoral
Counselors, St. Louis, Mo.
August 13-17 ACA, ACCA, APCCA, Annual Meeting,
Baltimore, Md.

Non-Profit Org.
U.S. postage
PAID
Atlanta, GA
30367
Permit No. 434

SOUTHERN BAPTIST HISTORICAL
LIBRARY AND ARCHIVES
Nashville, Tennessee