

Louisiana Baptists mobilizing for ministry

By John Yeats
Louisiana Baptist Convention

Hammond, La. (BP)—“I’m overwhelmed but not in a negative way. It’s very positive,” said Lonnie Wascom, director of missions for the Louisiana Baptist associations in Chappapeela, LaTangi and St. Tammany parishes.

“I’m 58 years old and I didn’t think I’d have new dreams, but we don’t have a choice. We need to re-dream the dream.”

The north shore area of Lake Pontchartrain was directly in the path of Hurricane Katrina. From the towns of Mandeville to Hammond and Covington to Slidell, the impact of nature’s fury continues to be evident.

But because most of the damage was wind-related and not flooding, recovery is gaining speed.

Wascom estimated there are at least 100,000 new people in the north shore area, many from New Orleans, who will become permanent residents. A major oil and gas-related corporate office’s announcement of its relocation to the area helped fuel the rebuilding and new development.

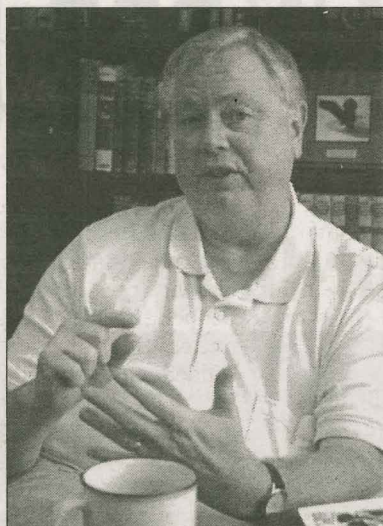
“In 1991, we had one church for every 2,400 citizens,” Wascom noted. “Now, we think it’s about one church for every 7,500.”

Scraping former strategies

As a result, Wascom said he and other north shore associational leaders must scrap their former long-range strategies and dream again.

“We had a strategic plan that we believed would hold us until 2012. It’s smashed. It’s obliterated,” he said. “We have no choice but to strategically address the radical change that occurred in our area.

“What we need now is a missionary church planting movement,” Wascom added. “We need some-



MINISTRY GOALS Lonnie Wascom, director of missions for three Louisiana Baptist associations battered by Hurricane Katrina, said Baptist leaders must “re-dream the dream” to reach people still recovering from the storm.

thing like what’s happening in overseas missionary fields. Granted, it will be different because of American economics. We’ve got to throw out every paradigm we’ve ever used and re-dream the vision of reaching this area for Christ.”

Wascom told Larry Badon, missions and ministry area coordinator for the Louisiana Baptist Convention, that he believes nine missions could be started today.

Badon organized an Oct. 5-6 tour to connect sponsoring churches, church planters and others in a coordinated effort to tackle the challenge. Fifty-five people from several states participated in the “GPS tour” (“Growing the Kingdom, Planting new churches, Seeing the people”), which also assessed needs in Baton Rouge, all of the Interstate 12 corridor and the Baptist Association of Greater New Orleans south of Lake

Pontchartrain.

“Larry asked us to give him locations for church plants. I’ve come with nine so far,” Wascom said. “We could do five times that, but I want us to make sure that the ones we plant are going to stay.”

Noting that one of the proposed church starts would be in the affluent area of Mandeville, Wascom said, “It may be the most affluent large city in Louisiana. ... I stopped by a golf course housing development where the church starts at \$400,000. There’s going to be like 1,400 houses in there. By and large, most of our churches aren’t prepared to reach these kinds of folks.

“I don’t know what an awakening looks like but I’ve tasted it in my 58 years from time to time,” Wascom reflected. “I’ve seen pockets of renewal in an individual church or in a small area. I do know from reading about awakenings it all starts with desperate praying. With what has happened to us, we’ve made prayer a major core value.”

Praying for awakening

In all three of the associations he serves something extraordinary is happening, Wascom said. The pastors are gathering for regular prayer and fasting. Not just prayer for the sick, but desperate prayer for “an awakening, for revival to come.”

“All three of these associations have talked about evangelism. They’ve talked about ways to penetrate the lostness. And they’ve heard my mantra over and over again—‘If we die, it will be because we drown in the sea of lostness,’” Wascom said.

Wascom said his ongoing prayer is, “Lord, I don’t care how You do it, I just don’t want to be left out.”

“God is up to something,” he declared. “The storms have seriously awakened this state.”

Baptist workers continue to aid Pakistan’s earthquake survivors

Islamabad, Pakistan (BP)—On the first anniversary of Pakistan’s October 2005 earthquake, politicians cut ribbons at ceremonies and Christians gathered in prayer, while most survivors of the tragedy spent the day getting on with their lives.

They were cutting grass for their animals to eat, clearing roads of recent landslides, harvesting corn and building walls of stone and hand-mixed cement.

Few in the mountain villages were even aware of the Oct. 8 minute of silence at 8:52 a.m. to memorialize their dead.

Government officials estimate the 7.6-magnitude earthquake killed more than 73,000 people in Pakistan and left about 3 million homeless. In neighboring India, the quake killed another 1,300 people and left about 150,000 people homeless.

A year later, the graves lay silent as tens of thousands of earthquake survivors face a second winter without adequate food or shelter.

“What concerns me is that people are a little bit better off than they were last year, but not much,” said a Southern Baptist representative in the area. “It was an answer to prayer last year that it was a mild winter.

This could be a severe winter. I know the rains were severe and it caused a lot of problems.”

“It’s just going to be a hard, cold winter,” another Southern Baptist representative agreed. “There’s going to be a lot of respiratory illness. I can’t see that anybody’s got shelter. Everyone is still in temporary (tin) sheets and wood.”

“People are still concerned,” one Baptist worker said. “They need the security of knowing that God loves them, that He cares for them and that He knows what’s best for them.”

Southern Baptist representatives, international volunteers and national partners have ministered during the past year by distributing food to earthquake survivors, teaching them how to build sturdy temporary shelters, treating their illnesses, providing school supplies for children, and helping families replace livestock and regain their livelihoods.

David Garrison, the Southern Baptist International Mission Board’s regional leader for southern Asia, noted that Southern Baptists’ response to the earthquake-ravaged area “has brought hope to millions living in this region.”

Chinese church in U.S. making impact in Asia

Stafford, Texas (ABP)—When Peter Leong was a boy in Malaysia, he never imagined he would end up in Texas. Now, as pastor of a Houston-area church, he is leading a team of Baptists back to Asia to help 82 pastors and their families spread the gospel.

The international mission trip is the second in three months for Southwest Chinese Baptist Church in Stafford, Texas, and it highlights growth in the Asian Baptist global community. In September, the 300-member church and Cross Pointe Baptist of San Jose, Calif., partnered with sister churches in Taiwan, Malaysia and Hong Kong on their third joint mission to Thailand.

This time, the church is partnering with Ching Mei Baptist Church in Taipei, Taiwan, to sponsor the first Northern Thailand Pastor Family Retreat for pastors, spouses and children. Members of the Stafford church collected funds to pay for travel, lodging, meals and books for the week-long project.

“We were blessed by God’s provision,” Leong, 61, said. “This is the first-ever pastor retreat for these Thai ministers. Our classes will be held in a remote mountain area. Some of the pastors and their families will even have to make the trip on foot.”

The 36-member team has chosen to work in Thailand because Leong grew up in Malaysia and was pastor of a Hong Kong church before moving to Texas. Four years ago he delivered the keynote speech at the Chinese Global Baptist Mission Conference in Thailand, and it changed his life, he said.

“God spoke to me, saying you must not only have a mission in China but also in Thailand, so I decided to invite church members to go there on a mission,” Leong said.

Ministering to the needs of the Thai people has opened doors to new relationships in a country where most residents practice Buddhism. The Chinese Baptist mission team has worked to train pastors, teach parents and help children develop new job skills.

Focusing on youth evangelism has been another goal of the Thai mission, “including efforts to reach young girls and their families who believe their only means of survival is through human trafficking,” Leong said.

“We’ve found the Thailand people are more accepting of us because we’re of similar ethnic backgrounds. We can do this great thing because they view us as more accessible,” he said. “We’re doing God’s work through our own cultural understanding.”

BAPTIST DIGEST

Midwestern acquires Spurgeon collection. Midwestern Baptist Theological Seminary recently won a bid to house the Charles H. Spurgeon Collection, a library featuring the works of notable Christian writers and personal essays that belonged to the legendary 19th-century preacher. The collection, which the seminary bought for \$400,000 from William Jewell College in Liberty, Mo., includes 5,103 volumes. William Jewell housed Spurgeon’s private library for more than a century. Midwestern officials said the new volumes will arrive on the seminary campus by Nov. 15.

Church ejected for calling female associate. An Alabama Baptist church has been ejected from its local association for calling a female associate pastor. Mobile Baptist Association voted 204-44 to withdraw fellowship from Hillcrest Baptist Church in Mobile. Associational leaders cited the church’s July decision to call Ellen Guice Sims to the associate position, saying the congregation had violated the association’s policy of adherence to the Southern Baptist Convention’s 2000 Baptist Faith and Message statement. That document states that “the office of pastor is limited to men as qualified by Scripture,” but even some supporters of the revision say the ban applies only to senior pastors. Director of Missions Thomas Wright defended the association’s interpretation that the Bible restricts women from all ordained ministry roles.

Canadian Southern Baptists consider name change. Messengers to the Canadian Convention of Southern Baptists approved a proposal for its national leadership board to recommend a new name to be voted on at next year’s annual meeting. According to the leadership board’s recommendation, the only problematic word in the current name is “Southern,” since it “is not reflective of our geographical, cultural, ministry or national context.”

KBC presidential candidates discuss evangelism, CP support

Steve Ayers: 'My ministry has been about evangelism'

Steve Ayers has been pastor of Hillvue Heights Baptist Church in Bowling Green since 1991. He has served on the Kentucky Baptist Convention Mission Board and the KBC Mission Study Committee and was elected to preach this year's state convention annual sermon.

Q: Why are you willing to be nominated as Kentucky Baptist Convention president?

The emphasis of evangelism encouraged me to be nominated for KBC president. The church I pastor has been a leader in evangelism and my ministry has been about evangelism.

Q: What would be your primary hopes and goals as KBC president?

First, our churches in the state of Kentucky place a high priority on evangelism. Second, missions through the state and to the world become our heartbeat. Third, new works started in targeted areas would be a priority. Fourth, we come together as churches and give so this can happen.

Q: Please share briefly about your personal spiritual pilgrimage.

I received Jesus at First Baptist Church of Bowling Green. I learned through FBC that missions and evangelism were the passions of being a Southern Baptist. There was a deep emphasis, in my early spiritual pilgrimage, on sharing the gospel. It was through the encouragement of FBC that I felt a call into the ministry. I served as youth pastor at Greenwood Baptist and pastor of Barren River Baptist. In these ministries, evangelism was a priority and growth was experienced. Then, I was called to Hillvue Heights Baptist, which was a rebuilding ministry where we emphasize connecting the disconnected to Jesus. My pilgrimage of faith has been one of Jesus Christ truly transforming my life and others.

Q: What is your view of the KBC's five-year "Kentucky Baptists Connect" emphasis on evangelism, church growth and other ministry priorities?

It was an honor and privilege to be selected in the original group that began to form these priorities. I am passionately devoted to the emphasis of evangelism. I am committed to church health, and I believe that our convention and ministries need to be funded in order to be effective. I believe in this Connect strategy and honestly believe that as Kentucky Baptist pastors, through the power of the Holy Spirit, we can see 25,000 baptisms in the state of Kentucky in a one-year period. I am committed to this and believe it will happen. Churches will grow and Cooperative Program giving will automatically increase.

Q: One of the proposals at this year's KBC annual meeting encourages electing convention officers "whose churches systematically lead by example in giving sacrificially and proportionally through the Cooperative Program." According to Annual Church Profile statistics, your church gave slightly more than 1 percent through CP in 2004-05. How is your church addressing that issue?

Our CP giving has not been where we want it to be. One reason for this has been the dynamics of Hillvue that went from

near-bankruptcy to experiencing 2,000 people in worship in a five-year period. We have now begun to stabilize and are very encouraged by the direction of the convention. In support of the Connect priorities, we have and are increasing our CP giving. We believe in the Cooperative Program, which allows us to share Jesus throughout the world. We pray that we can be an example to other churches to also increase their CP giving and thus impact the world with the gospel of Jesus.

Q: Your church led the KBC last year with 435 baptisms (a ratio of one baptism per 11 resident members). Please share briefly about your personal commitment to evangelism and baptisms.

Hillvue Heights is dedicated to connecting those who are disconnected from the gospel to the gospel. The first core value of

our church is to connect others to Jesus. Hillvue knows this to be the heartbeat of our church, which has encouraged them to share their faith in the world and to allow the Holy Spirit to draw those who are lost to salvation. This priority has allowed Hillvue to start five new churches in the past eight years, and now increase its CP giving so the world will continue to hear the gospel.

Q: One of the key responsibilities as president is to appoint three members to the KBC Committee on Committees. What criteria would you use to make your appointments?

I would appoint people committed to the Connect strategy, people who have a high priority in evangelism and church health, starting new churches and committed to increased giving.

Q: How would you describe yourself in the current political/theological landscape of Baptist life?

I am committed to the gospel of Jesus Christ. I believe in preaching the Bible, evangelism to the world and church health. I believe that people need Jesus. I am a passionate cross and resurrection preacher. I believe the only way into heaven is Jesus Christ. I believe there is a literal hell. I believe if people don't meet Jesus, they will go there. I believe we need as many preachers preaching Jesus as we can find. That's where I stand.

Q: What do you consider Kentucky Baptists' greatest strengths? Why?

I consider Kentucky Baptists' greatest strengths to be our many different expressions of ministry which allow us to reach a variety of people. I believe as we come together as Kentucky Baptist churches, under the power of the Holy Spirit, we can have a greater impact than by doing it on our own.

Q: What do you consider Kentucky Baptists' greatest needs? Why?

First, I believe evangelism needs to become our priority, and we need to get real about this issue. Second, I believe that we need new churches. We need renewed churches. We need the church to wake up and see that it can do great things. I think Kentucky Baptists must realize that the convention, in itself, is not the priority. The convention is local churches coming together for the emphasis of missions and evangelism. Through this, the world will be impacted by the gospel.

Darren Gaddis: 'I intend to champion CP,' state missions

Darren Gaddis has been pastor of Central Baptist Church in Corbin since 2002. He is a former Kentucky Baptist Convention second vice president and served on the KBC Cooperative Program Study Committee. He also is a trustee for GuideStone Financial Resources.

Q: Why are you willing to be nominated as Kentucky Baptist Convention president?

This was not an easy decision for me. I have turned down several requests to be nominated over the past three years. Since I previously served as second vice president, I felt that others should

have the opportunity to serve. However, when Don Mathis approached me again this past spring, he encouraged me to pray about it. After doing so, I felt the Lord's leading to be nominated.

Q: What would be your primary hopes and goals as KBC president?

Since "Kentucky Baptists Connect" has been adopted to guide the KBC, it is my intention to both promote and participate in this vision. However, such a bold mandate cannot be accomplished without the collective financial support of our churches.

Therefore, I intend to champion the Cooperative Program and the Eliza Broadus state missions offering as well. Finally, it is my hope that peace and harmony will continue to prevail in all that we do.

Q: Please share briefly about your personal spiritual pilgrimage.

I came to faith in Jesus Christ at the age of 8 and was baptized at Yellow Creek Baptist Church in Owensboro. Through Sunday school, Bible drills and Royal Ambassadors, the seeds of ministry were planted in my heart that blossomed into my call to the ministry. I am what I am today due to the wonderful grace of Jesus Christ. He has blessed me with a wonderful companion on my spiritual journey. Having been nurtured by her home church of Lone Oak First Baptist Church in Paducah and mentored by the Baptist Student Union at Murray State University, Jennifer is my greatest spiritual encourager.

Q: What is your view of the KBC's five-year "Kentucky Baptists Connect" emphasis on evangelism, church growth and other ministry priorities?

What a God-sized vision! I am thrilled by the Kingdom focus. My church embraced the Connect goals early on and is diligently working to do our part. As a High Impact Church Advisory Team member, I have seen firsthand the tangible results of the new church starts that have come through Kentucky Baptists Connect. It is just a blessing to see our convention family working together again for the cause of Christ.

Q: Your church is among KBC leaders in Cooperative Program support, giving 15 percent through CP in 2004-05 and contributing more than \$3 million through CP in the church's history. Please share briefly about your personal commitment to Cooperative Program support.

I truly believe that the CP is the most ingenious method of denominational sup-

port ever conceived. Just about every aspect of our state convention is touched by it. I am a product of the CP and have a tremendous burden for it, especially in light of recent downward trends in percentage giving by churches across the SBC. We as Baptists are all better together and the CP is a tangible expression of that.

Q: Your church reported 33 baptisms last year (a ratio of one baptism per 39 resident members), compared to the average KBC baptism ratio of 1:32. How is your church addressing that issue?

I am actually proud of our current ratio for it represents a significant turnaround from the abysmal 1:72 baptism ratio we had before my arrival as pastor. Our most recent reporting gives an even better ratio of 1:35. This turnaround has come through numerous mis-

sion trips, community outreach and revivals. Our church also led out in a regional crusade that saw 150-plus salvations. During my previous pastorate, we were blessed with a 500 percent increase in baptisms and were recognized for having one of the highest baptismal ratios in America. We are in the middle of a similar turnaround at Central Baptist Church.

Q: One of the key responsibilities as president is to appoint three members to the KBC Committee on Committees. What criteria would you use to make your appointments?

First and foremost, because we are a denomination which is historically committed to the Scriptures, I will only appoint those who are by faith and practice committed to its authority. Second, since Dr. Mackey and the convention staff have long ago earned the respect of our convention, I will only appoint those who are strongly supportive of them. Third, because a recommendation from the Mission Board is likely to be approved encouraging the convention to select leaders from churches that demonstrate strong support of the CP, I will only appoint those whose churches demonstrate that support.

Q: How would you describe yourself in the current political/theological landscape of Baptist life?

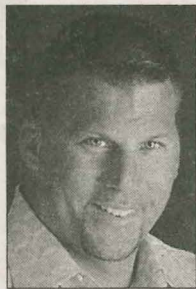
Because labels tend to polarize rather than inform, let me simply describe myself in this way: I am a Christian and a Southern Baptist from Kentucky who believes that the Lord Jesus Christ is the only way of salvation and that His Bible is completely trustworthy and absolutely sufficient.

Q: What do you consider Kentucky Baptists' greatest strengths? Why?

While our strengths are numerous, two stand out most in my mind. First, we have a Great Commission mandate coupled with a God-given vision in Kentucky Baptists Connect. Second, we have an unprecedented level of peace and harmony unlike many of our sister state conventions. I can only imagine what is about to happen as we focus all of our energies together upon winning the lost to Jesus.

Q: What do you consider Kentucky Baptists' greatest needs? Why?

Beyond increasing our evangelism efforts, our greatest need is in assimilating and discipling those who come to faith in Christ. The Barna Group's estimate that around 336,000 dechurched Kentuckians once attended Baptist churches is a serious indictment that needs an immediate response.



Steve Ayers



Darren Gaddis

KBC 2006 Presidential Candidate Profiles

WESTERN RECORDER

Box 43969
Louisville, KY 40253
(USPS 679-380)

TRENNIS HENDERSON
Editor

JANET MCINTOSH
Marketing & Business
Manager

*Earnestly contend for
the faith which was once
for all delivered to the
saints.—Jude 3*

Western Recorder is published weekly by Western Recorder Inc., an agency of the Kentucky Baptist Convention, Box 43969, Louisville, KY 40253, except for one week in July and December. For general information, call (502) 489-3535. Periodicals postage paid at Louisville, Ky.

To subscribe: Send \$12.50 for a one-year, individual subscription. Group subscriptions on the church budget plan are \$10 per year. An additional church newsletter service is available for churches of all sizes. All subscriptions are payable in advance, except church accounts, which require a tax exemption number.

POSTMASTER: Send address corrections to: Western Recorder, Box 43969, Louisville, KY 40253.

To register change of address: Send the mailing label from page 1, along with your new address, to the subscription department at the Western Recorder address.

To give news tips: Call (502) 489-3422, toll-free (866) 489-3422 or write the editor or news director.

To submit a letter: Letters from subscribers on any subject will be considered for publication, provided they do not make a personal attack on anyone. Letters are limited to 300 words and may be edited for length. Submit by mail or by e-mail to: wesrec@earthlink.net

To place an advertisement: Rates are available upon request by calling (502) 489-3428. Institutional columns are paid space. Claims made by advertisers are not necessarily those of the Western Recorder's staff and directors.

Directors:

Chairman **Linda Polley**, Elizabethtown;
Vice Chairman **Floyd Price**, Prestonsburg;
Secretary **Mike Harmon**, Mount Sterling;
Skip Alexander, Campbellsville;
Dan Francis, Erlanger;
David Harmon-Vaughn, Louisville;
Ken James, London;
Don Mantooth, Morehead;
Bill Marshall, Louisville;
Bill Thurman, Lexington;
Rodney Travis, Hopkinsville.

Darfur intervention

In the Oct. 24 Western Recorder editorial was this statement: "The Evangelicals for Darfur coalition has sounded a clear call for President Bush and other leaders to insist on the deployment of U.N. peacekeeping forces in Darfur." The African Union sent a peacekeeping mission to Darfur in 2004. Peacekeepers have been in Sudan (where Darfur is located) since last year.

Peacekeepers have been in Lebanon since 1978, and they did nothing recently while Hezbollah, backed by United Nations members Syria and Iran, attempted to, as President Ahmadinejad of U.N. member Iran has promised, wipe Israel from the earth. The U.N. currently has peacekeeping missions in 18 countries and regions, but they have little or no power vis-à-vis a serious insurrection or genocide, having neither the incentive nor the resources to actually effect or maintain peace, as was graphically shown in Lebanon.

The implied meaning of the coalition's "call" is that the U.S. should "just do something." Currently, this country has a half-million troops deployed in 30 foreign countries and at sea, about 160,000 of them directly in harm's way in Afghanistan and Iraq. Meanwhile, U.N. members Germany and France have 284,500 and 259,000 active troops, respectively, doing virtually nothing. The numbers for U.N. members Russia and

China, respectively, are 1,212,700 and 2,255,000, a total of another 3,467,700 active troops to save Darfur. But who's calling for them?

Darfur will be saved if and when a nation or consortium of nations, under U.N. mandate or not, drives the government/military out of Sudan, as was the case in 1991 (principally the U.S.) when Saddam was driven from Kuwait. Expecting the U.S. to take this on now is expecting too much. The biggies in Evangelicals for Darfur such as Richard Land, Tony Campolo and Bill Hybels may be very compassionate folks, but military geniuses they are not.

Jim Clark
Lexington

Editor's Note: *The Evangelicals for Darfur coalition is not calling for U.S. troops to be deployed in Darfur. Rather, it is calling for a multinational peacekeeping force including support from China and the European Union.*

Practice Jesus' words

In light of articles about the apparent shock of the act of forgiveness by the Amish to the family of the shooter, I would like to say I'm not surprised at the shock. It always has been that "religious" peoples are short on forgiveness and long on vengeance and justice.

I commend my brothers in Christ for their act of obedience. After all, it's not a suggestion (Matthew 5:38-

48). Christ knew that violence begets more violence and hatred more hatred. He had the only answer.

That leads me to an event in this country: 9/11. Most Christians reading this will say, "That was different. We couldn't just turn the other cheek. We couldn't forgive our enemies. We have a patriotic duty to defend our country. We have a moral obligation to see that those responsible pay for their deeds."

Secularly speaking I would agree, but I'm not a secularist. 99.9 percent of those reading this aren't secularist either. So why do most of those 99.9 percent support and defend the retaliation that takes place to this day? I'm afraid it's revenge and a false sense of patriotism.

Christians should ask themselves these questions: What would have been the outcome had we as a supposedly "Christian" nation responded as the Amish? What if we as a supposedly "Christian" nation prayed not only for, but also with the Muslim families? I contend that God would have worked in a mighty way.

Instead, our military has worked in a mighty way to further disenfranchise and further the hatred of the U.S. Reconciliation is impossible now, whereas reconciliation was the only outcome of an act of forgiveness.

We as supposed "Christians" should be ashamed of not adhering to and practicing Jesus' words on how to deal with our enemies.

Bill Ehleben
Lowes

Let Christ's light shine amid darkness

By Henry Blackaby

Atlanta (BP)—We live in a world of artificial light in many ways. If we go to a ballgame and nighttime is approaching, we watch as the stadium lights come on in the transition, and we are led to believe that daytime still exists. In essence, we are deceived about the night because of the "artificial light."

We might function well with artificial light in the physical world but this certainly is not true in the

Kingdom of God. Jesus said to His disciples, "I must work the works of Him who sent Me while it is day; the night is coming when no man can work. As long as I am in the world, I am the light of the world" (John 9:4-5).

We, in our day, tend to believe we can ignore the real "night that is coming" by turning on our artificial lights to make us think and act as if nothing is wrong.

Too many of us today see the

darkness approaching in our nation and world but convince ourselves it's not as bad as it truly is. We simply throw on the switch of artificial light so we will not be overtaken by the darkness.

Jesus gave us a clear warning of this moment. We must face the real time in which we live just as He did and work the works of Him who sent us. Look carefully around you for opportunities to let Christ's light shine in you and through you.

Henry Blackaby, author of "Experiencing God," is the founder of Blackaby Ministries International in Atlanta

FIRST PERSON

Recognizing faithful Christian service

My wife, Kay, and I recently had the privilege of participating in a worship service in which J.T. and Ruth Ward were recognized for ministry in and through First Baptist Church of Whitesburg.

Through the outreach of this church, J.T. professed his faith in Jesus Christ in 1956. Then, through the mission outreach of First Baptist Church of Premium, he began to teach Sunday school and soon was leading a Sunday school mission at another site, assisted by Ruth.

In those days, this ministry involved an early trip to start the fire in order to warm the building and then a couple of trips to transport the children to the Sunday school mission.

J.T. and Ruth later began teaching at First Baptist Church and continue to do so. J.T. teaches a men's Bible class and Ruth teaches a wom-

en's class. They both are in their late 70s now and together have taught the Bible in Sunday school for a combined total of more than 100 years.

Missions has always been on the Wards' hearts and they have worked and given to support missions locally and around the world. As Bible teachers, they understand the scope of the Great Commission and consequently are champions for world missions through the Cooperative Program.

The Wards are a part of the builder generation who worked hard to build the great service institutions of our culture without primary regard to personal inconvenience and cost. J.T. retired as president of the Bank of Whitesburg after 40 years of service there. Ruth did not fully retire until two years ago.

They have been great stewards of their resources and always have



STEWARDSHIP

Practice 10 basic rules to manage debt effectively

By Don Spencer

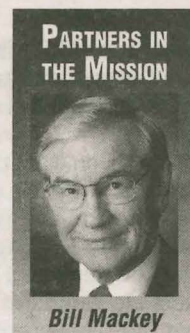
For most people, debt is a necessity. Debt can be a valuable tool in personal finance. However, if not handled properly, debt can become a major problem.

A common problem is approaching a debt purely from the standpoint of the monthly payment. For example, a couple decides to purchase an item on credit because it will only cost \$20 per month. Next month it's another item for only \$10 more per month. The financing cost adds significantly to the cost of the item. Little by little, this mushrooms and sets up a person for problems.

Consider these 10 rules for using debt wisely and safely:

1. Save for major purchases. Don't finance unless absolutely necessary. Set a goal of paying cash for vacations, cars and other large purchases.
2. Use credit cards only as a convenience. Do not finance long-term debt with credit cards. Pay the credit card bill in full each month. Credit cards are easy to get and misuse. They generally have a very high interest rate. To carry a continuing monthly balance is a bad use of credit.
3. Keep all debt payments below one-third of your gross income. Above that level, you're exceeding safe limits.
4. Lower the real cost of debt. Try to make all interest tax-deductible. A home equity loan has this advantage.
5. Maintain adequate assets that easily can be turned into cash. Debt has never hurt anyone. A lack of sufficient cash flow to manage the debt has.
6. Have adequate life and disability income insurance. Ignoring this exposes a person to significant financial risk.
7. Make debt predictable. Be cautious about using adjustable-rate financing and loans with balloon payments.
8. Accelerating debt payments might not always be best. Individuals should maintain adequate savings for emergency needs, fund tax-deferred retirement plans adequately and pay off non-tax-deductible debt before accelerating payments on other debts.
9. Refinance only if it will save money. Consolidation loans do not always save money.
10. Protect your credit. Don't abuse credit. Make payments on time. If you have problems making payments, talk to the creditors and re-negotiate.

Don Spencer is a certified financial planner and directs the Kentucky Baptist Convention's church financial benefits department



Bill Mackey

PARTNERS IN THE MISSION

Quality resources available to help parents teach about sex

Q: A recent column addressed why it is important for Christian parents to talk to their children about sex. What resources are available to help me teach my children about this issue?

Parents who want to teach their children about sex often find it hard to get the conversation started. Fortunately, a variety of good, age-appropriate resources are available.

PARENTING

The Lutheran Church Missouri Synod produces an excellent set of books titled "The Learning About Sex Series." The books are published by Concordia Publishing House. There are seven titles in the series, and they are terrific. The books are age-graded beginning with "Why Boys and Girls Are Different" for ages 3-5, and continuing in increments of three to four years all the way to teen years. Two companion videotapes also are available. The video that accompanies "How You Are Changing" (ages 8-11) is outstanding. Parents will find Book 6, "How to Talk Confidently with Your Child about Sex," by Lenore Buth particularly helpful. Visit the Concordia website (cph.com) and click on sex education for more information.

"A Chicken's Guide to Talking Turkey with Your Children about Sex," written by family commentator and humorist Dr. Kevin Leman and human sexuality expert Kathy Flores Bell, will help you know how to talk with your children, and how much information to give children at specific ages. "Preparing Your Son for Everyman's Battle" by Arterburn, Stoeker and Yorkey provides dads with tips for having honest conversations with their sons about sexual integrity. "Your Girl" by Vicki Courtney includes an excellent section on sexual purity.

Younger children will enjoy being read to. Parents might want to share a book with older children—choosing a book, reading a chapter at a time and then talking about the content together.—David Garrard

Q: I recently discovered that my wife is having a sexual affair. When I confronted her, she said she thinks she is in love with him. What should I do?

Sexual affairs typically move individuals to a point of temporary insanity. The forbidden, hidden relationship serves as a type of narcotic that not only produces powerful feelings, but leaves the affair participant living in an altered state of distorted reality. Often someone involved in adultery will make comments like, "I've never felt this way before," "I've waited all my life to find love like this" or "This is my soul-mate."

Exposure of the affair and confrontation by loved ones often tests the false reality in which the affair partner is living. Let me encourage you to let your wife know that she must make a choice. Let her know that you are willing to work on the marriage and that you are prepared to begin marriage counseling immediately.

The good news is that the sooner she is willing to break off the affair and enter counseling, the better chance that you will not only save your marriage, but improve it. Often the pain of infidelity can serve as a warning bell to push couples to address important issues of concern.

Make sure that you go immediately to your family physician or the health department to be tested for sexually-transmitted diseases and for HIV/AIDS. Be careful in giving details about the affair to family members, but carefully choose a spiritually mature same-sex friend with whom you can talk and pray. Realize that you will have feelings of hurt, anger and sadness that are natural with such a situation.—Scott Wigginton

Family Forum writers are:

David Garrard, minister to children at St. Matthews Baptist Church in Louisville. E-mail: dgarrard@smbclouisville.org.

James Stillwell, minister to singles at Immanuel Baptist Church in Lexington. E-mail: james@ibs-lex.org.

Valerie Vincent, Christian counselor with Hardy Associates in Louisville. E-mail: dr.vincent@insightbb.com.

Scott Wigginton, associate professor of pastoral ministries and counseling at Campbellsville University. E-mail: sewigginton@campbellsville.edu.

Send questions for Family Forum to Western Recorder, Box 43969, Louisville, KY 40253 or e-mail wesrec@earthlink.net.



Keys to leading with integrity, godly vision

"Leading with Integrity and Godly Vision" is the theme for this year's Kentucky Baptist Convention annual meeting. As part of the KBC's five-year "Kentucky Baptists Connect" ministry strategy, the theme is a follow-up to last year's focus on "Strengthening Every Church."

Seeking to address key ways to lead with integrity and vision, the KBC Mission Board staff recently commissioned an in-depth survey of Kentucky Baptist pastors and laity. The survey, conducted by J. David Schmidt & Associates of Wheaton, Ill., included responses from 430 pastors and more than 2,300 laypeople across the state.

The survey was designed to "help shape decision-making related to KBC ministries and the Cooperative Program," according to the study's executive summary. It produced a wealth of information compiled in an 86-page report and an accompanying 46-page summary.

Key findings were highlighted in more than a dozen "Take Note" sections in the executive summary. Among those findings:

- "KBC churches that are strictly traditional/classic in their worship styles tend to be smaller. ... KBC churches that have blended or contemporary worship for some or all of their services are more likely to be larger and to be located in a more populated area."

- Rather than suggesting that various styles are "right" or "wrong," the study encourages "equipping smaller church leaders in small town churches to develop the worship language that matches the people and community ... since the worship service remains the primary door of entry into most churches."

- "All generational groups who responded to the survey show strong levels of involvement in their churches. Nevertheless, some generational differences were observed. ... Membership and weekly worship attendance are valued most by those age 60 and older—the builder generation—and they are also more likely to practice the discipline of tithing."

- "Experience shows that churches tend to be sporadic in emphasizing stewardship. ... Pastors need strategic help to convert their desire for greater steward-

ship among their people into a sustained ministry that never goes away in a church."

Noting that a personal commitment to tithing "increases with each successive age group," the study emphasized that "future support of your local churches is dependent on younger attenders developing the commitment to giving."

- "Clearly, mission work—international, national and state—are high-value areas for support. ... The Cooperative Program is no longer the 'only game in town.' Keeping it relevant, efficient and effective ... are key to keeping the Cooperative Program support at its current or an elevated level."

Almost one-fourth of lay members who participated in the survey indicated they never had heard of the Cooperative Program. Yet the majority of laypeople said they had a primary interest in supporting mission work in Kentucky.

Since most Kentucky Baptists "are enthusiastic about mission work and supporting it," KBC Executive Director Bill Mackey affirmed the need to help churches and individuals "make the connection between ministries and their funding source."

- "Three felt needs were among the top five regardless of worship attendance: raising up and training leaders, reaching unchurched young adults, and getting people involved in evangelism."

All three of those priorities were cited by more than 70 percent of survey respondents. That suggests that training leaders, reaching the unchurched and involving people in evangelism are essential in helping local congregations discover practical ways to impact their communities with the gospel of Christ.

"The 'one size fits all' model of church service, support and consulting is dead in today's context," the study declares.

Mackey agreed with that assessment, noting that "all the things that we're doing to help the local church must relate to the needs of the local church."

If so, Kentucky Baptists throughout the commonwealth can cooperate together to lead with integrity and godly vision.

STRAIGHT FROM THE EDITOR



Trennis Henderson

As U.S. tops 300 million, what about ministry?

By Erich Bridges

Richmond, Va. (BP)—The population of the United States soared past 300 million in October, with no signs of declining anytime soon.

Only two other countries contain more than 300 million people: China and India, with more than 1 billion people each. Like those two giants—and unlike most of Europe and other "developed" countries—the U.S. population continues to climb.

Natural increase (more births than deaths) explains much of the annual growth in population, according to the Population Reference Bureau. But immigrants account for about 40 percent of the growth.

Foreign-born people in the United States now number more than 35 million, ranging from unskilled laborers to highly skilled professionals. Non-Hispanic whites account for just over half of the population today. Hispanics, African Americans and a rainbow of other colors and ethnicities make up the rest. Additionally, up to 30 percent of the population will be multiracial by 2050, according to some projections.

Americans face plenty of social and economic problems, but we're generally healthier, more prosperous and better educated than ever. We will continue to wield great social, political and economic influence worldwide for the foreseeable future.

But what about the prospects of evangelical Christians in—and beyond—America?

We've come a long way, to be sure. We help decide national elections and determine social policies. Our numbers continue to grow—

albeit more slowly in recent years. Increasingly, our voices are being heard in the international arenas of war and peace; the fight against genocide, poverty and AIDS; and the struggle for human rights and religious freedom.

But some evangelical researchers say we've begun to decline. We're losing our own young people, they warn, while failing to reach far enough beyond our pews to touch the unchurched.

Overall church attendance remains virtually unchanged from 15 years ago despite national population growth, according to Dave Olson, director of the American Church Research Project. Population is increasing faster than church participation even in the traditional Bible Belt, he reports.

"We live in a world today that is post-Christian, postmodern and multiethnic," Olson told a gathering of evangelical church leaders Oct. 12 at the annual meeting of the Mission America Coalition. To reach that world, he said, the church "needs to be less self-righteous, individualistic and materialistic. It

needs to be more biblical, Christ-centric and holistic."

Amen to that. But let's not get discouraged about our potential for transforming American culture—and other cultures. The amazing ethnic and cultural variety of America offers an unprecedented opportunity. For one thing, immigration brings the world to us, which opens endless opportunities for missions and ministry. For another, many of the people coming here from Latin America, Asia and Africa already are evangelical believers and potential partners in mission.

Abroad, the potential contributions of millions of American evangelicals are greater than ever—as missionaries, volunteers, teachers, mentors and trainers of the growing "two-thirds world" missionary force.

An American living in China recently invited some Chinese friends to dinner—including a Buddhist, a Communist Party member and a man who was having an adulterous affair. Within a few weeks of the supper, all three had decided to follow Jesus as Lord.

One sent the American a note: "Jesus is our bridge to God. You were my bridge to Jesus. If you hadn't come to share Jesus, I think we would still be in the dark."

Transformed hearts transform societies, not the other way around. The only force that truly transforms hearts is the gospel.

Erich Bridges is a senior writer with the Southern Baptist International Mission Board

Horse whisperer shares testimony while 'gentling' filly

Continued from page 1

onstrations are gentle enough to be led by a halter but are not trained for riding. The filly provided for the Shelby County event was raised in the fields of Eastern Kentucky and, according to her owner, had never even spent time in a stall.

Daily admits he once was a harsh master, breaking horses by intimidation and fear. As he learned to be gentler with the animals, he saw clearly the spiritual parallel.

"I want this horse to know that I love her and I care about her," he said. "Just like God loves you and cares about you."

As the filly learned to accept the feel of ropes, a pad and finally a saddle on her back, Daily reminded the crowd that God's "yoke is easy to bear," referencing Matthew 11:30.

God's love also comes with firm discipline, just as a trainer must be firm with a horse. "I want control over all aspects of this horse's life," he said, adding that because a horse has a will of its own, such control is not guaranteed.

"This horse determines her own destiny," Daily noted, "just like us."

Protesting the ropes around her belly, the filly kicked and pulled away from Daily's daughter. "As long as she's bucking or kicking, Lenora will stay away from her," he said. Although God wants everyone to have a relationship with Him, He will not force anyone to obey or love Him,



MOMENTS OF TRUTH Christian "horse whisperer" Paul Daily spoke to more than 1,500 people at five events throughout Kentucky last week. Several people in the crowds made spiritual decisions. ■ Above left: Daily prays at the close of his demonstration at the Shelby County Fairgrounds. ■ Above right: As a finale to the unique gospel presentation, Daily's daughter, Lenora, prepares to mount a filly that never had been ridden. (Photos by Dannah Prather)

Daily added.

Although the filly rebelled, she also responded to the trainers' affections. Soon, the animal accepted a saddle, and eventually, the filly was galloping around the pen, responding to the instructions of Daily's daughter.

Now the horse is useful to its master, Daily said, just as believers grow into disciples of Christ.

"It was cool how he gained its

trust that quick," said Chris Cook of Madison, Ind., who attended the event with his parents.

The comparison of an untamed animal to the often-rebellious human heart was on target, according to Gwen Cook. "It's very closely related," she said, "and he's right, it is like looking in a mirror."

The spiritual parallels also were clear to Wendy Zetko of Henry County, who said the presentation could

have opened the eyes of people who never before considered a relationship with God.

"It made perfect sense to me," Zetko said. "Maybe for some people it was the first time having it in front of their eyes and very visible."

Martin said Daily already has scheduled a return trip to Kentucky for Sept. 9-15, 2007. To learn more about Daily's ministry, visit www.wildhorseministries.com.

Welcome to debt-free living.

Dave Ramsey's

Financial
Peace
University

Financial Peace University
is a 13-week small group study designed
to teach God's way of handling money.

Call Today!
877-378-2667

Get a **FREE** preview DVD

DaveRamsey.com/fpu/church

Crucifixion scene cut from NBC's Madonna special

Nashville (BP)—In the wake of pressure from Christian groups accusing NBC of a double standard, television network officials have decided to cut the crucifixion scene from a November broadcast of a concert from Madonna's "Confessions" tour, according to media reports.

NBC officials did not say why they decided to cut the scene, noting only that the song, "Live to Tell," has been revised for the broadcast special. A spokesperson said they will use images from other cameras while Madonna is mounted on a suspended, mirrored cross, wearing a crown of thorns, during the first part of the song, Associated Press reported.

Several Christian groups had threatened to boycott one of the concert's sponsors if the cross scene aired on NBC, especially in light of the network's decision to censor biblical messages from its Saturday morning broadcasts of the popular Christian-themed children's cartoon "VeggieTales."

Critics' response mixed

"NBC did the right thing, but the fact that it did not say why the offensive part of Madonna's concert was cut shows cowardice," Bill Donohue, president of the Catholic League, said in an Oct. 19 news release. "What NBC should have done is to admit that since it refused to air the Danish cartoons that Muslims objected to earlier this year, it felt obliged not to treat Christians in a discriminatory manner."

Donohue had noted in an earlier letter to Bob Wright, vice president and executive officer of NBC Universal, that NBC Nightly News had chosen not to show in full the caricatures of Muhammad that offended Muslims worldwide in February.

Don Wildmon, president of the American Family Association, said more than 750,000 AFA supporters e-mailed NBC asking for the crucifixion scene to be deleted from the concert special, and others called their local NBC stations to complain.

"Those stations contacted NBC and the network listened," Wildmon said Oct. 19 in an e-mail to supporters. "The scene is gone!"

Other conservative groups that voiced opposition to the crucifixion scene in Madonna's concert include the Parents Television Council, the Traditional Values Coalition and the Christian Film and Television Commission.

Madonna, in a statement last month, said the scene "is not a mocking of the church" and "is neither anti-Christian, sacrilegious or blasphemous." She also claimed the depiction is similar to a person wearing a cross as a necklace.

N.J. gay rights ruling sends mixed signals

By Robert Marus
Associated Baptist Press

Trenton, N.J. (ABP)—The New Jersey Supreme Court ruled Oct. 25 that the state's constitution requires that marriage rights be available to same-sex couples on an equal basis with heterosexuals.

But the court left state legislators to decide whether to refer to the unions by the name "marriage" or a different term.

The decision leaves New Jersey in a situation similar to Vermont's, where legislators in 2000 passed the nation's first law legalizing "civil unions" for same-sex couples. Vermont's civil unions, which followed a similar court decision, offer the same rights and benefits as marriage without using the name.

"Marriage" not guaranteed term

All seven justices agreed the New Jersey Constitution requires the state to extend to homosexual couples the same rights as married couples. However, only three justices said those rights include equal use of the term "marriage," while the four-justice majority said use of the term is not guaranteed.

"The state has not articulated any legitimate public need for depriving same-sex couples of the host of benefits and privileges that married couples enjoy, wrote Justice Barry Albin, who authored the majority's opinion. "There is no rational basis for, on the one hand, giving gays and lesbians full civil rights in their status as individuals and, on the other, giving them an incomplete set of rights when they follow the inclination of their sexual orientation and enter into committed same-sex relationships."

Vermont and Connecticut have civil-union laws that provide identical benefits to same-sex couples as married heterosexual couples. Massachusetts, following a decision by

its highest court, legalized same-sex marriage in 2004.

New Jersey already has a domestic-partnership law that grants to same-sex couples some of the rights and responsibilities of married heterosexuals. However, Albin noted that the statute does not provide gay couples or their children with equal protection of the law in several critical areas, such as adoption rights.

In the latest decision, *Lewis v. Harris*, the New Jersey court unanimously agreed that the state constitution's equal-protection provision, coupled with the fact that other state laws ban discrimination on the basis of sexual orientation, requires a legislative remedy for disparate treatment of same-sex couples.

The majority determined that such a decision "leaves the legislature with two apparent options. The legislature could simply amend the marriage statutes to include same-sex couples, or it could create a separate statutory structure, such as a civil union, as Connecticut and Vermont have done."

That result would fall short for the plaintiffs—seven same-sex New Jersey couples—and most of the nation's gay-rights organizations. They have argued that granting marriage rights without the term marriage creates a "separate-but-equal" structure.

Albin addressed that argument. "Raised here is the perplexing question—'what's in a name?'—and is a name itself of constitutional magnitude after the state is required to provide full statutory rights and benefits to same-sex couples?" he asked. "We are mindful that in the cultural clash over same-sex marriage, the word 'marriage' itself—independent of the rights and benefits of marriage—has an evocative and important meaning to both parties."

But Albin said the legitimacy that the term "marriage" would be-

stow on homosexual couples would best be delivered through legislative, rather than judicial, action.

Chief Justice Deborah Poritz, in an opinion joined by two fellow dissenters, countered that the term "marriage" is as integral to the rationale cited by the majority as marriage's attendant rights and benefits.

"Labels are used to perpetuate prejudice about differences that, in this case, are embedded in the law. By excluding same-sex couples from civil marriage, the state declares that it is legitimate to differentiate between their commitments and the commitments of heterosexual couples," she wrote. "Ultimately, the message is that what same-sex couples have is not as important or as significant as 'real' marriage."

Two states reject similar suits

The ruling is the first major legal victory for gay-rights groups since the Massachusetts decision. The highest courts in two other states—New York and Washington—both recently rejected similar lawsuits filed by homosexual couples.

Several state laws and constitutional amendments banning same-sex marriage have passed by wide margins since 1998. Eight states have proposals banning gay marriage before voters in the Nov. 7 elections.

"Today's decision should give momentum to the eight states with marriage-protection amendments on the November ballot," said Tony Perkins, president of the Washington-based Family Research Council, in a statement released shortly after the New Jersey ruling. "By mandating that the New Jersey legislature enact same-sex 'marriage' or civil unions, the court ignores the unique benefits of marriage between one man and one woman. Society gives benefits to marriage because marriage gives benefits to society."

NATIONAL NOTES

Colson resigns as Prison Fellowship chair.

Prison Fellowship founder Chuck Colson has announced his resignation as chairman of the board of the ministry he started 30 years ago. Colson, who turned 75 on Oct. 16, said the board of Prison Fellowship USA has chosen business executive Michael Timmis as his successor. Timmis has served since 1997 as chairman of the board of Prison Fellowship International. Colson will remain a member of the Prison Fellowship board and plans to pursue writing, teaching and speaking work with the ministry.

High court turns down Scouting case.

The U.S. Supreme Court has declined to hear an appeal of a California Supreme Court decision against a Scouting group that was denied free use of a Berkeley municipal facility because the Boy Scouts ban gays and atheists from their ranks. The high court declined to consider *Evans v. City of Berkeley*, which involved the Sea Scouts—a Scouting affiliate. The scouts had sued to regain free use of three berths in a municipal arena for their boats. They had enjoyed free access to the berths since the 1930s, court papers said. However, city officials determined, after passing a 1997 statute that barred city benefits to groups that discriminate on the basis of sexual orientation, the scouts violated the policy.

Christian groups urge pre-election prayer.

Voters across the country are being encouraged by Christian groups to pray as the Nov. 7 midterm elections draw near. The Presidential Prayer Team, an independent non-partisan group, is using its "Pray the Vote" campaign to offer resources for those interested in praying for the elections. The National Day of Prayer Task Force also is urging Americans to pray for the outcome of the elections. The main initiative in its "Pray for Election Day" campaign is to set aside Nov. 5, the Sunday before the election, as a day for prayer and fasting.

Mormon studies expanding at universities.

Two American universities with no ties to the Church of Jesus Christ of Latter-day Saints have plans to endow professorships in Mormon studies, making them the first secular schools to establish chairs in the academic study of Mormonism. Utah State University at Logan plans to launch the Leonard J. Arrington Chair in Mormon History and Culture in fall 2007, and the School of Religion at Claremont Graduate University in Southern California plans a fall 2008 start for its Howard W. Hunter Chair for Mormon Studies. Scholars say the programs could help push the public perception of Mormonism and its academic study further into the American mainstream.

Muslim claims firing due to charity dispute.

The U.S. Equal Employment Opportunity Commission has filed a religious discrimination lawsuit against the nation's largest community development corporation, alleging that it fired a Muslim employee after he refused to donate money to a Catholic charity. The lawsuit alleges that New Community Corp. fired Newark Police Lt. Anthony Kerr from his part-time job as a security guard after he refused to donate to a Catholic charity because of his religious beliefs. As a practicing Muslim, Kerr said he would prefer to give to a Muslim charity that conforms to his religious beliefs. New Community Corp. officials said Kerr's allegations are false and vowed to defend the lawsuit.

Student teacher settles prayer case.

A student teacher who claimed she was given a failing grade because she objected to teacher-led prayer in a Louisiana classroom has settled a lawsuit she filed against her university. In an agreement, senior education major Pamela Thompson accepted a "withdrawal" grade for the student-teaching course she took during her final semester at Southeastern Louisiana University. But Thompson must fulfill more requirements—including repeating her student-teaching assignment—before receiving her diploma, according to the settlement.

Pentecostals are growing global force, study discovers

"Renewalist movements are reshaping Christianity throughout the world."

Luis Lugo, director of the Pew Forum on Religion and Public Life

By Hannah Elliott
Associated Baptist Press

Los Angeles (ABP)—An international study on Pentecostal and charismatic Christians released this month shows them growing in number—and socio-political influence—around the globe.

The 10-nation study, sponsored by the Pew Forum on Religion and Public Life, also found that one of the hallmarks of Pentecostalism—speaking in tongues—is not as prevalent as some might suppose.

Several Christian demographics experts have estimated that 25 percent of the world's 2 billion Christians are "renewalist"—a general term used to describe Pentecostals and charismatics—in theological and ecclesiological outlook. The Pew survey looked specifically at renewal groups in the United States, Brazil, Chile, Guatemala, Kenya, Nigeria, South Africa, India, the Philippines and South Korea.

In every nation surveyed except India, at least 10 percent of the population is renewalist. Five percent of India's population is renewalist. In Brazil, Guatemala and Kenya, close to 50 percent of the population is renewalist. In Brazil, Chile, Guatemala, Kenya and the Philippines, more than two-thirds of Protestants are either Pentecostal or charismatic.

Luis Lugo, director of the Pew Forum, said he initially questioned

some of the survey results, but came to realize the numbers are valid. Now, he said, he doesn't think it's too far-fetched to imagine that Christianity may be on its way to "being Pentecostalized."

"I do think that it's not an overstatement to suggest that renewal movements are reshaping Christianity throughout the world," he said.

Pentecostals are defined in the report as people who belong to historic Pentecostal denominations, such as the Assemblies of God or the Church of God in Christ.

More loosely grouped, charismatic Christians are defined in the study as having had an "in-filling" of the Holy Spirit but who are not members of classic Pentecostal denominations. Instead, they stay within non-renewalist denominations or go to non-denominational churches.

While the Pentecostal and charismatic traditions historically have shunned political involvement, that may be changing. In nine of the 10 countries, at least half of Pentecostals and charismatics surveyed said religious groups should express their views on social and political questions.

Lugo said the findings also show that renewalists tend not to compartmentalize their faith. Pentecostals and charismatics see God playing a direct role in politics and expect Him to act in all aspects of life.

The report said in seven of the 10 countries surveyed, at least 50 percent of Pentecostals said their church services included speaking in tongues, prophesying or praying for miraculous healing. In charismatic groups, those services were less common, but still fairly prevalent.

Speaking in tongues, however, "was not as common as many (re-

newalist) theologians would expect," according to John Green, a Pew Forum researcher. "Even among classical Pentecostals, the level of speaking in tongues is considerably less than you might expect."

In fact, in six of the 10 countries surveyed, at least 40 percent of Pentecostals said they never speak or pray in tongues.

Gift-Based Ministry? How does that work?

Want to help members move from the pews into the trenches of Christian servanthood? Want to explore issues of vocational Christian calling, spiritual gifts, the mission of the church, and the role of laypersons in ministry?

Why not register for the online course series in Gift-Based Ministry? Each of the three 4-week courses is highly interactive and provides opportunities for online discussion with the facilitator and other study participants. The facilitator is gift-based ministry consultant and Minister for Service & Lay Leadership.

• Courses begin Jan. 15, Feb. 26, & Apr. 9

Registration: \$150 per course
(Scholarships are available to cover 50% of registration fees).

Visit www.btsr.edu/scm, or call 1-888-339-2877.



LifeWay CHURCH BUSES

Buses provided for LifeWay by
Carpenter Bus Sales

1-800-370-6180 • carpenterbus.com

How can you help?

Regular financial gifts, prayer among greatest gifts to aid Oneida students

By Michael Spencer
Assistant to the President

One of the special aspects of the Oneida school is the amount of contact we have with our supporters. Every year, hundreds of our supporters come to our campus to visit or volunteer. We do not have a fancy visitors' center or a special dining room. They eat the same food we do, come to chapel, tour the facilities and rub elbows with our students and staff.

Our students are used to having guests next to them in chapel or in the breakfast line. Frequently, I remind our students to be considerate to guests, but this is not necessary with most of our young people. They see volunteers and visitors as their friends and as part of the Oneida family. It isn't unusual for volunteers to return to campus to visit students, even at graduation.

Visitors often ask how they can best help our students. Our supporters are very generous and have proven over and over that they are compassionate and ready to give.

On first consideration, it may seem that a special gift is the best way to help a student. We would never refuse any gift, and many special gifts are, indeed, special to what we do. But the gifts most helpful and most needed are not the spectacular kind that might make a special story in a publication.

What are the best ways to support Oneida?

First, learn about our ministry. Understand what we do, our vision and our unique approach to ministry. We are different in so many ways. Peo-

ple who understand us are our best allies.

Next, provide simple, regular financial support. Monthly gifts of \$25, \$50 or \$100 may seem like small gifts to a supporter or a Sunday school class, but these gifts are the backbone of our ability to begin each day with the food and resources to minister. We appreciate large financial gifts, but it is the regular support from ordinary friends that keeps us going.

Next, get your church involved in the Father's Day Offering. In May each year, we send out a packet of materials that can be used for a special offering or emphasis. This can be done on Father's Day or any time during the year.

Make it your ministry to "intercept" those materials at your church and see that they are distributed and used in your congregation. This is very important to us, and helps us create more friends and supporters.

Finally, pray about your personal involvement. Can you volunteer? Can you recruit staff? Can you promote us to potential students? Can you organize a mission trip? Sponsor special trips or acquisitions for teams, clubs and classes? Do you have a skill that our school could make use of, even a few days a year? Pray about how you can be involved personally.

Our faithful friends do the small things as well as the big things, but it's those small, constant, in-and-out-of-season ways of supporting us that we value most. If you are a friend, be that kind of friend, and you will be blessed to be a partner in what God is doing at Oneida.

THIS IS ONEIDA



W.F. Underwood

W.F. Underwood is president of Oneida Baptist Institute, Box 67, Oneida, KY 40972; www.oneidaschool.org; e-mail: president@oneidaschool.org

Called to work with children

Future teacher prepares through Bible education

While Betty Burns was a student at Clear Creek, she was often asked the question, "Why are you here?" Her goal was a teaching degree and certification, so why attend a Bible college that does not offer such a degree?

"Many people thought I was crazy, wasting my time," Betty said. "I wanted to know more about God's Word and relate the truth to children. God called me to work with children and do mission work, so I came to Clear Creek for training in Bible." In May, Betty received the associate of arts in Christian service and

now is enrolled at Eastern Kentucky University. "I've grown so much in my relationship with Christ," Betty said. "I had some classes with my dad and we studied together some." Her father, Michael, received the bachelor of arts in 2005 and now is Clear Creek's director of computer operations. Her brother, Thomas, is a first-year student.

Born in Germany while her father was in the military, Betty lived five years in Ohio. The family returned to Kentucky about 12 years ago. Mike was director of in-

formation services with a local computer technology firm before the Lord called him into ministry.

Betty acknowledged, "God has called all of us to serve Him. I'm ready for whatever He has in store for me." Her love for children started early, working in the church nursery at age 13. During her first year at Clear Creek,

she taught preschoolers at Mill Creek Day-care. "I did the Bible story, handled discipline and everything else," she said. "There are so many children who don't have good homes; we need to show them God's love." Mission trips to West Virginia and Ohio provided "awesome" experiences of working with children.

Through a campus library job, God also met her need. "I worked 15 hours a week and was thankful for the opportunity," she said. "I didn't have to drive to work and got to know so many on campus."

Clear Creek will add another special memory to Betty's life on November 11. Her marriage to Eric Philpot will be in the campus chapel with the reception in Kelly Hall.

Bill Whittaker is president of Clear Creek Baptist Bible College, Pineville, KY 40977; (606) 337-3196

CLEAR CREEK
CHRONICLE



Bill Whittaker

Freed at last!

Discover how charitable IRA rollover can work for you

It was a long time coming, but Congress finally approved direct contributions from both traditional and Roth IRAs to qualified charitable organizations. The charitable IRA rollover provisions of the Pension Protection Act of 2006 provide a significant yet limited opportunity to use this important source for charitable giving purposes.

It's significant because (1) for many, IRA accounts have grown to become their largest asset, but until now the tax laws discouraged charitable gifting using IRA assets; (2) it allows certain individuals to donate up to \$100,000 per year of funds accrued in IRA accounts without including them in their taxable gross income, thus no tax deduction, and the gift counts toward the IRA owner's required minimum distribution; and (3) it is simpler than taking a distribution, giving the money to a charity and then claiming a deduction.

It's limited because (1) you must be 70 and a half; (2) you only have two years to give from your IRA, 2006 and 2007; and (3) your IRA custodian/trustee must transfer the assets directly to the qualified

charitable organization. Transfers to donor-advised funds, charitable gift annuities, charitable remainder trusts, private foundations or other planned giving vehicles do not qualify.

If you are 70 and a half, already taking a required minimum distribution, but do not need the additional income, this could be a window of opportunity to make a significant tax-advantaged gift to your church and other favorite charitable organizations. If you desire to give more than the deductibility ceiling of 50 percent of adjusted gross income, this is an opportunity to fulfill that desire. Perhaps you have desired to make a significant gift during your lifetime, but did not want to use after-tax assets. Now is your opportunity as well. Couples can give up to \$400,000 over two years.

You can transfer IRA assets to the Kentucky Baptist Foundation to establish or add to a permanent endowment fund that perpetually supports your charitable interests. Call us to discover how the new IRA charitable rollover can work for you.

Barry Allen is president of the Kentucky Baptist Foundation, PO Box 436389, Louisville, KY 40253; (866) 489-3533; www.kybaptistfoundation.org

KENTUCKY BAPTIST FOUNDATION



Barry Allen

Kudzu

Doug Marlette



For Heaven's Sake

Mike Morgan



Bible Crosswords

- Across**
 1 Thrives
 8 Boy's name, var. form
 11 Played again
 12 Set in
 14 Two, Romans numeral
 15 God told Moses His name was I ____
 16 Overdose, abbr.
 17 Milligram, abbr.
 18 "Destroy ... the ____" (Deuteronomy 20:17)
 20 Carrot family herb
 23 Public transportation
 24 Number of lepers that Christ healed
 25 Charged particle
 27 Christ is the Alpha and ____
 29 And, Lat.
 30 By the grace of God, Lat. abbr.
 31 Preposition
 32 Pull
 33 Long walk
 36 Tin container
 37 Mr., Sp. abbr.
 39 "The Lord will not ____ his people" (1 Samuel 12:22)
 41 The self, according to Freud
 43 "____, every one that thirsteth" (Isaiah 55:1)
 45 Sixteenth letter of Greek alphabet (plural)
 47 Preposition
 48 Aaron's son (Exodus 6:25)
 51 Childrens Bible club

1	2	3	4	5	6	7	8	9	10
11					12		13		
14					15		16		
17					18			19	
20		21		22			23		
24				25	26		27		28
29				30			31		32
	33	34	35			36			37
38		39			40			41	42
43	44				45			46	47
48		49		50			51	52	
53						54	55		
		56					57		58

- 53 Potato state
 54 "____ my steps in thy word" (Psalms 119:133)
 56 Russian ruler
 57 "Take up thy ____, and go" (Matthew 9:6)
 58 Church education, abbr.
 26 King of Bashan (1 Kings 4:19)
 28 Mythological snake-haired woman
 31 "Howl, O ye ____ of Bashan" (Zechariah 11:2)
 34 "____ it be thou, bid me come" (Matthew 14:28)
 35 Belonging to the leader of a rebellion against Moses (Numbers 16)
 36 Egyptian city
 38 Arab chief
 40 Fashionable resort
 42 Belonging to one of the sons of Judah (Numbers 26:19)
 44 "The dragon, that ____ serpent" (Revelation 20:2)
 46 Filled with wonder
 49 "Let us ____, and be merry" (Luke 15:23)
 50 Animals, scientific suffix
 51 Lemon beverage
 52 Clinton's state, abbr.
 55 Rubidium, chem. symbol

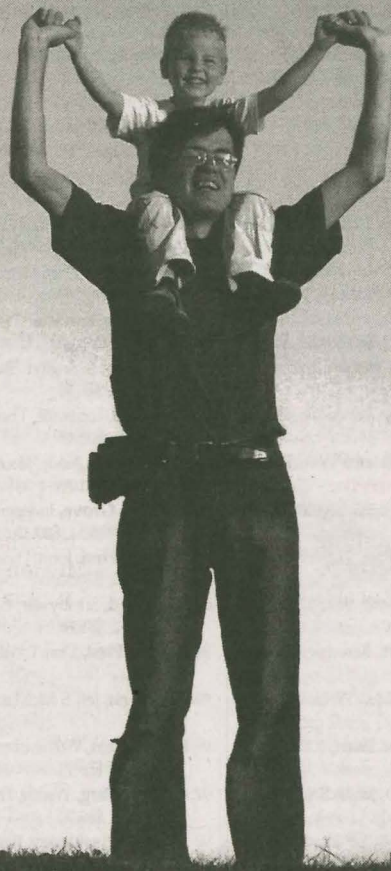
Down

- 1 Monkey, for example
 2 "Thy God ____!" (Isaiah 52:7)
 3 Either
 4 Bags
 5 IOU, in other words, abbr.
 6 City in Zebulun (1 Chronicles 6:77)
 7 Tin, chemical symbol
 8 Middle
 9 Preposition
 10 Feline's foot (2 words)
 13 Paris university
 15 Support organization for addicts, abbr.
 19 African fly that spreads disease
 21 Not out
 22 Sea duck with soft feathers

Last week's solution

1	C	H	U	R	C	H	6	M	O	R	8	S	9	E	L
11	R	A	R	E	I	12	W	I	13	M	N	O			
14	A	R	N	O	L	D			15	O	D	D			
16	S	P					17	R	E	18	R	U	G		
19	H	S	T		20	M	E	T	E	21	E	D	E	R	E
25	G														
30	R	E			32	H			33	O	S	T	35	B	E
36	E	V	E		37	T	R	E	E		39	M	A	P	
40	A	I	D							41	A	D	43	I	N
44	T	L	C							45	S	E	P	A	R
49	Y	O	U	N	G	E	S	T		50	N	T	H	S	

Biblical Solutions for Life.



- Shop online at lifeway.com
- Call 1.800.458.2772
- Visit a LifeWay Store near you



Top 100 churches in total gifts to KBC

This report lists the top 100 congregations in total contributions to the Kentucky Baptist Convention for the fiscal year ended Aug. 31, 2006. The total dollar amount includes contributions channeled through the KBC to the Cooperative Program and restricted gifts to the KBC budget, as well as gifts to the Eliza Broadus Offering, Lottie Moon Christmas Offering, Annie Armstrong Easter Offering, children's home offering, hospital offering, KBC schools, hunger relief and other designated causes. Each entry includes the rank, church name and city, pastor's name, total membership, total dollars given and per capita amount.

1 Living Hope , Bowling Green, Jason Pettus, 2346, \$486,717.15, \$207.47	25 Westport Road , Louisville, Chip Lee Pendleton, 1350, \$136,164.13, \$100.86	49 Versailles , John F Brandon, 1360, \$102,231.47, \$75.17	74 Monticello First , David Coy Webb, 526, \$73,088.93, \$138.95
2 Immanuel , Lexington, Craig A Loscalzo, 4145, \$447,165.40, \$107.88	26 Mount Washington First , Paul Harrison Chitwood, 2103, \$134,948.02, \$64.17	50 Yellow Creek , Owensboro, James William Wedding, 1519, \$100,214.85, \$65.97	75 Lancaster , Zach Terry, 865, \$72,956.05, \$84.34
3 Porter Memorial , Lexington, William Henard, 5222, \$436,648.18, \$83.62	27 Pikeville First , Paul R Badgett, 1656, \$134,725.59, \$81.36	51 Russell First , Kenneth Gowin, 995, \$96,618.99, \$97.10	76 Pleasant Grove , Owensboro, Kenneth A Stone, 737, \$72,648.33, \$98.57
4 Owensboro First , Paul Strahan, 2921, \$384,757.57, \$131.72	28 Central City First , Robert K Lowery, 1360, \$128,369.21, \$94.39	52 Barbourville First , Shane Nickell, 974, \$96,028.76, \$98.59	77 Hardinsburg , Doug Miller, 455, \$72,648.07, \$159.67
5 Severns Valley , Elizabethtown, George W Compton Jr, 3919, \$358,966.61, \$91.60	29 Shelbyville First , Edward H Erwin, 1304, \$128,296.06, \$98.39	53 Madisonville First , Joe Leonard, 2391, \$95,671.17, \$40.01	78 Cynthiana , Wayne Spivey, 1040, \$71,796.00, \$69.03
6 Somerset First , Bill Haynes, 2030, \$287,795.64, \$141.77	30 LaGrange , Anthony Lee Rose, 1572, \$125,808.84, \$80.03	54 Cedar Creek , Louisville, John Ewart, 800, \$93,488.30, \$116.86	79 Calvary , Glasgow, Randy Shaw, 845, \$71,487.90, \$84.60
7 Lone Oak First , Paducah, Dan Summerlin, 2756, \$285,577.31, \$103.62	31 Pleasant Hill , Somerset, Marty Shadoan, 735, \$123,447.09, \$167.96	55 Burlington , John Terry Wilder, 1271, \$92,725.48, \$72.95	80 Salem , 350, \$71,405.50, \$204.02
8 Campbellsville , Claude Alexander, 1658, \$254,619.16, \$153.57	32 Princeton First , Thomas Martin Hughes, 1766, \$123,428.76, \$69.89	56 Hardin , Ricky Wayne Cunningham, 1582, \$91,250.07, \$57.68	81 Williamstown , Stephen C Rice, 722, \$70,894.15, \$98.19
9 Eastwood , Bowling Green, Tom R James, 1136, \$243,931.53, \$214.73	33 Beaver Dam , Glenn D Armstrong, 1329, \$119,530.57, \$89.94	57 Bruners Chapel , Harrodsburg, 592, \$90,673.72, \$153.17	82 Russellville Second , Ronald G Wells, 912, \$70,339.45, \$77.13
10 Henderson First , Todd A Linn, 2063, \$219,848.08, \$106.57	34 Buck Run , Frankfort, Hershael W York, 1111, \$117,270.29, \$105.55	58 Christ , Cold Spring, Randy Coleman, 413, \$88,481.88, \$214.24	83 Paintsville First , Donnie B Patrick, 852, \$70,090.16, \$82.27
11 Central , Winchester, Art Beasley, 2308, \$214,349.58, \$92.87	35 Murray First , Wendell W Ray, 1200, \$117,171.61, \$97.64	59 Cadiz , Kevin Roberts, 957, \$85,824.91, \$89.68	84 Westside , Murray, Glynn M Orr, 973, \$70,023.60, \$71.97
12 Paducah First , John Kevin McCallon, 3659, \$212,766.17, \$58.15	36 Briensburg , Benton, C Charles Brasher Jr, 635, \$116,961.35, \$184.19	60 Mexico , Marion, Timothy A Burdon, 365, \$83,049.37, \$227.53	85 Elkton , Jerry Lee Tracy, 815, \$69,480.83, \$85.25
13 Central , Corbin, Darren Gaddis, 2216, \$199,150.85, \$89.87	37 St Matthews , Louisville, D Leslie Hollon, 3009, \$115,995.89, \$38.55	61 Eddyville First , Timothy E Perdue, 665, \$82,327.78, \$123.80	86 Russell Springs First , Joe Allen, 897, \$69,456.43, \$77.43
14 Richmond First , Bill C Fort, 2274, \$191,989.65, \$84.43	38 Hopkinsville First , Rodney Travis, 1656, \$114,271.80, \$69.00	62 Owenton First , Daven Keith Watkins, 730, \$81,697.27, \$111.91	87 Pleasant Hill , Campbellsville, James E Jones, 616, \$68,686.52, \$111.50
15 Greenville Second , H Ray England, 1171, \$173,766.55, \$148.39	39 Hurstbourne , Louisville, Michael O'Neal, 1147, \$114,204.54, \$99.57	63 Reidland , Paducah, Lawrence T Lewis, 888, \$81,064.56, \$91.29	88 Lewisport , David Apple, 1021, \$68,569.13, \$67.16
16 Hopkinsville Second , 1530, \$165,351.34, \$108.07	40 Unity , Ashland, Floyd A Paris, 1898, \$113,556.93, \$59.83	64 Crestwood , Frankfort, James Wallace Kent, 1218, \$80,701.86, \$66.26	89 Fairview , Ashland, Michael D Rice, 916, \$68,196.50, \$74.45
17 Florence , Timothy I Alexander, 2419, \$163,867.28, \$67.74	41 Rose Hill , Ashland, Ronnie Mayes, 1819, \$108,469.23, \$59.63	65 Hillvue Heights , Bowling Green, Stephen Lee Ayers, 5910, \$80,004.00, \$13.54	90 Red House , Richmond, 1372, \$67,940.68, \$49.52
18 Shively , Louisville, Bruce E Truman, 2892, \$163,466.55, \$56.52	42 Calvary , Lexington, Robert Gayle Baker, 2240, \$107,399.59, \$47.95	66 High Street , Somerset, Jammie Vance, 1052, \$79,660.33, \$75.72	91 Valley Creek , Elizabethtown, James Scott Kerr, 1225, \$67,017.12, \$54.71
19 Rich Pond , Bowling Green, Steven R Hussung, 1193, \$161,789.20, \$135.62	43 Walnut Street , Louisville, James Ellison Jr, 6023, \$106,986.00, \$17.76	67 Mount Vernon First , William Edward Nation, 1033, \$79,263.13, \$76.73	92 Franklin First , 1116, \$65,533.23, \$58.72
20 Hillcrest , Hopkinsville, Gregory A Giltner, 1706, \$148,960.22, \$87.32	44 Bowling Green First , Mark Edward Hopper, 1625, \$106,277.32, \$65.40	68 Edgewood , Hopkinsville, Nicholas W Sandefur, 1065, \$78,788.35, \$73.98	93 Broadway , Lexington, Shannon Back, 716, \$64,216.31, \$89.69
21 Bellevue , Owensboro, Gregory Fauls, 1902, \$148,425.57, \$78.04	45 Northside , Elizabethtown, 625, \$106,229.22, \$169.97	69 Graefenburg , Waddy, Fred Moffatt, 653, \$76,056.62, \$116.47	94 Glasgow , 1991, \$64,105.97, \$32.20
22 Beacon Hill , Somerset, John Mark Toby, 1155, \$146,877.61, \$127.17	46 Ninth and O , Louisville, Bill Cook, 2751, \$106,223.15, \$38.61	70 Parkland , Louisville, Thomas T Curry, 1971, \$75,032.02, \$38.07	95 Franklin Crossroads , Cecilia, Ronald Robert Davis, 840, \$63,999.52, \$76.19
23 Crestwood , Dan Garland, 2559, \$144,466.99, \$56.45	47 Sand Spring , Lawrenceburg, Michael R Hamrick, 1071, \$105,486.50, \$98.49	71 Kings , Mount Washington, Corey Abney, 975, \$73,819.11, \$75.71	96 Calhoun , Richard Sams, 551, \$63,822.01, \$115.83
24 Lawrenceburg First , Robert Ehr, 1250, \$144,061.91, \$115.25	48 Mayfield First , Bob J Swift, 1565, \$102,446.45, \$65.46	72 Russellville First , Bruce Rendleman, 1004, \$73,355.17, \$73.06	97 Oakland Avenue , Catlettsburg, Keith Menshouse, 712, \$63,441.79, \$89.10

Top 100 churches in Cooperative Program gifts

This report lists the top 100 congregations in total contributions to the Kentucky Baptist Convention's Cooperative Program for the fiscal year ended Aug. 31, 2006. Each entry includes the rank, church name and city, pastor's name, total membership, total dollars given and per capita amount.

1 Living Hope , Bowling Green, Jason Pettus, 2346, \$407,938.76, \$173.89	26 Beaver Dam , Glenn D Armstrong, 1329, \$101,656.19, \$76.49	51 Cadiz , Kevin Roberts, 957, \$70,100.11, \$73.25	77 Russellville First , Bruce Rendleman, 1004, \$51,799.44, \$51.59
2 Porter Memorial , Lexington, William Henard, 5222, \$365,078.18, \$69.91	27 Pleasant Hill , Somerset, Marty Shadoan, 735, \$100,063.02, \$136.14	52 Hurstbourne , Louisville, Michael O'Neal, 1147, \$68,720.61, \$59.91	78 Russell Springs First , Joe Allen, 897, \$51,511.88, \$57.43
3 Immanuel , Lexington, Craig A Loscalzo, 4145, \$335,742.27, \$81.00	28 Buck Run , Frankfort, Hershael W York, 1111, \$98,648.40, \$88.79	53 Crestwood , Frankfort, James Wallace Kent, 1218, \$68,377.46, \$56.14	79 Calvary , Glasgow, Randy Shaw, 845, \$51,283.09, \$60.69
4 Owensboro First , Paul Strahan, 2921, \$290,066.69, \$99.30	29 LaGrange , Anthony Lee Rose, 1572, \$97,935.03, \$62.30	54 Kings , Mount Washington, Corey Abney, 975, \$68,303.39, \$70.05	80 Fairview , Ashland, Michael D Rice, 916, \$50,506.42, \$55.14
5 Somerset First , Bill Haynes, 2030, \$266,130.64, \$131.10	30 Russell First , Kenneth Gowin, 995, \$96,618.99, \$97.10	55 Versailles , John F Brandon, 1360, \$67,896.50, \$49.92	81 Calhoun , Richard Sams, 551, \$50,115.80, \$90.95
6 Severns Valley , Elizabethtown, George W Compton Jr, 3919, \$252,333.46, \$64.39	31 Sand Spring , Lawrenceburg, Michael R Hamrick, 1071, \$91,902.25, \$85.81	56 Ninth and O , Louisville, Bill Cook, 2751, \$66,834.00, \$24.29	82 Immanuel , Elizabethtown, Charles M Darland III, 701, \$49,977.93, \$71.30
7 Lone Oak First , Paducah, Dan Summerlin, 2756, \$200,109.44, \$72.61	32 Princeton First , Thomas Martin Hughes, 1766, \$90,216.17, \$51.09	57 Owenton First , Daven Keith Watkins, 730, \$65,302.11, \$89.45	83 Northside , Princeton, Jeffrey Lynn French, 1080, \$49,799.15, \$46.11
8 Henderson First , Todd A Linn, 2063, \$181,297.97, \$87.88	33 Beacon Hill , Somerset, John Mark Toby, 1155, \$88,416.72, \$76.55	58 Unity , Ashland, Floyd A Paris, 1898, \$64,369.88, \$33.91	84 Glasgow , 1991, \$48,315.97, \$24.27
9 Central , Corbin, Darren Gaddis, 2216, \$167,287.03, \$75.49	34 Hopkinsville First , Rodney Travis, 1656, \$87,729.43, \$52.98	59 Lancaster , Zach Terry, 865, \$64,251.08, \$74.28	85 Paris First , 896, \$48,087.21, \$53.67
10 Eastwood , Bowling Green, Tom R James, 1136, \$166,126.03, \$146.24	35 Greenville Second , H Ray England, 1171, \$84,601.40, \$72.25	60 High Street , Somerset, Jammie Vance, 1052, \$63,452.13, \$60.32	86 Hopewell , Corbin, Herschel S Walker, 562, \$48,050.00, \$85.50
11 Campbellsville , Claude Alexander, 1658, \$163,809.42, \$98.80	36 Mount Washington First , Paul Harrison Chitwood, 2103, \$84,588.83, \$40.22	61 Red House , Richmond, 1372, \$63,105.63, \$46.00	87 Southside , Princeton, Delton Beall, 1223, \$47,673.79, \$38.98
12 Hopkinsville Second , 1530, \$153,915.93, \$100.60	37 Barbourville First , Shane Nickell, 974, \$81,211.53, \$83.38	62 Christ , Cold Spring, Randy Coleman, 413, \$61,102.56, \$147.95	88 Broadway , Lexington, Shannon Back, 716, \$47,671.77, \$66.58
13 Paducah First , John Kevin McCallon, 3659, \$153,747.96, \$42.02	38 Yellow Creek , Owensboro, James William Wedding, 1519, \$80,519.20, \$53.01	63 Pleasant Hill , Campbellsville, James E Jones, 616, \$60,896.02, \$98.86	89 Parkland , Louisville, Thomas T Curry, 1971, \$47,272.06, \$23.98
14 Central , Winchester, Art Beasley, 2308, \$148,984.12, \$64.55	39 Hillvue Heights , Bowling Green, Stephen Lee Ayers, 5910, \$80,004.00, \$13.54	64 Edgewood , Hopkinsville, Nicholas W Sandefur, 1065, \$60,332.00, \$56.65	90 Corinth , McQuady, Jacob H Huffman III, 517, \$47,243.00, \$91.38
15 Richmond First , Bill C Fort, 2274, \$139,240.03, \$61.23	40 Pikeville First , Paul R Badgett, 1656, \$78,224.36, \$47.24	65 Mayfield First , Bob J Swift, 1565, \$60,000.00, \$38.34	91 Hickory Grove , Independence, Will Langford, 2303, \$46,788.54, \$20.32
16 Shively , Louisville, Bruce E Truman, 2892, \$136,490.90, \$47.20	41 Burlington , John Terry Wilder, 1271, \$77,918.40, \$61.30	66 Williamstown , Stephen C Rice, 722, \$59,912.54, \$82.98	92 Hanson First , John Thomas Branson, 661, \$46,734.86, \$70.70
17 Hillcrest , Hopkinsville, Gregory A Giltner, 1706, \$131,706.22, \$77.20	42 Rose Hill , Ashland, Ronnie Mayes, 1819, \$77,229.36, \$42.46	67 Hardinsburg , Doug Miller, 455, \$59,552.12, \$130.88	93 Highland , Shelbyville, Gary L Elcessor, 834, \$46,440.32, \$55.68
18 Lawrenceburg First , Robert Ehr, 1250, \$125,361.88, \$100.29	43 Hardin , Ricky Wayne Cunningham, 1582, \$75,150.01, \$47.50	68 Pleasant Grove , Owensboro, Kenneth A Stone, 737, \$58,281.00, \$79.08	94 Benton First , Don T Wilson, 827, \$45,768.47, \$55.34
19 Rich Pond , Bowling Green, Steven R Hussung, 1193, \$116,409.23, \$97.58	44 Murray First , Wendell W Ray, 1200, \$74,622.55, \$62.19	69 Russellville Second , Ronald G Wells, 912, \$57,329.44, \$62.86	95 Clay First , Jeff S McMains, 562, \$45,683.92, \$81.29
20 Bellevue , Owensboro, Gregory Fauls, 1902, \$114,583.33, \$60.24	45 Bruners Chapel , Harrodsburg, 592, \$74,477.22, \$125.81	70 Cedar Creek , Louisville, John Ewart, 800, \$56,519.13, \$70.65	96 Main Street , Williamsburg, Bill B Wright, 690, \$45,642.54, \$66.15
21 Crestwood , Dan Garland, 2559, \$113,528.56, \$44.36	46 Reidland , Paducah, Lawrence T Lewis, 888, \$74,304.81, \$83.68	71 Valley Creek , Elizabethtown, James Scott Kerr, 1225, \$54,501.83, \$44.49	97 Graefenburg , Waddy, Fred Moffatt, 653, \$45,513.82, \$69.70
22 Central City First , Robert K Lowery, 1360, \$107,154.26, \$78.79	47 Mount Vernon First , William Edward Nation, 1033, \$71,744.38, \$69.45	72 Rosebower , Paducah, Kenneth E Puckett, 666, \$54,294.11, \$81.52	98 Sharpe Missionary , Benton, Jeremy Short, 562, \$45,337.57, \$80.67
23 Westport Road , Louisville, Chip Lee Pendleton, 1350, \$106,532.88, \$78.91	48 Northside , Elizabethtown, 625, \$71,109.02, \$113.77	73 Simpsonville , Stephen D Boyd, 796, \$54,045.02, \$67.90	99 Lowell Avenue , Campbellsville, David Walters, 590, \$44,930.41, \$76.15
24 Shelbyville First , Edward H Erwin, 1304, \$105,756.88, \$81.10	49 Eddyville First , Timothy E Perdue, 665, \$70,448.43, \$105.94	74 Franklin Crossroads , Cecilia, Ronald Robert Davis, 840, \$53,415.60, \$63.59	100 Gano , Georgetown, 849, \$44,882.75, \$52.87
25 Briensburg , Benton, C Charles Brasher Jr, 635, \$104,043.33, \$163.85	50 Mexico , Marion, Timothy A Burdon, 365, \$70,255.21, \$192.48	75 Cynthiana , Wayne Spivey, 1040, \$52,677.33, \$50.65	
		76 Walnut Street , Louisville, James Ellison Jr, 6023, \$52,108.73, \$8.65	

Top 100 churches in per capita gifts to KBC

- 1 **Indian Creek**, Cynthiana, Tom Moore, 6, \$2,300.00, \$383.33
- 2 **Master's**, Lexington, Alex Kinchen, 124, \$38,848.16, \$313.29
- 3 **Countryside**, Morganfield, Royce D Pile, 38, \$11,841.51, \$311.62
- 4 **Cane Valley**, Campbellsville, James Collison Jr, 94, \$27,348.96, \$290.95
- 5 **Moscow**, Bardwell, Joe B Bagwell, 32, \$9,222.58, \$288.21
- 6 **Monticello**, Provo, Randall D Burns, 195, \$53,797.50, \$275.88
- 7 **Lighthouse Fellowship**, Louisville, Dallas Kratzer, 11, \$2,867.06, \$260.64
- 8 **Salem**, Campbellsville, Michael Edward Goodwin, 98, \$23,351.73, \$238.28
- 9 **Living Hope**, Louisville, Jack C Naylor, 200, \$46,079.25, \$230.40
- 10 **Mexico**, Marion, Timothy A Burdon, 365, \$83,049.37, \$227.53
- 11 **Fountain Run First**, Robert Hermon Wilkins, 212, \$47,953.05, \$226.19
- 12 **Lakeside**, Nancy, David King, 34, \$7,632.71, \$224.49
- 13 **Eastwood**, Bowling Green, Tom R James, 1136, \$243,931.53, \$214.73
- 14 **Christ**, Cold Spring, Randy Coleman, 413, \$88,481.88, \$214.24
- 15 **Living Hope**, Bowling Green, Jason Pettus, 2346, \$486,717.15, \$207.47
- 16 **Good Hope**, Campbellsville, J Alvin Hardy, 224, \$46,332.91, \$206.84
- 17 **Emmanuel**, Winchester, Ronald Montgomery, 44, \$9,042.47, \$205.51
- 18 **Salem**, 350, \$71,405.50, \$204.02
- 19 **Mount Gilead**, Allensville, Joshua Tharpe, 22, \$4,431.85, \$201.45
- 20 **Riverview**, Catlettsburg, Charles Shelby Bush, 10, \$1,994.92, \$199.49
- 21 **Oak Grove**, Tyner, Mike Waslewski, 25, \$4,960.00, \$198.40
- 22 **White Plains**, Scottsville, Phillip Rogers, 289, \$56,695.34, \$196.18
- 23 **Woodland**, Greenville, Thomas R Webb, 164, \$30,765.95, \$187.60
- 24 **Briensburg**, Benton, C Charles Brasher Jr, 635, \$116,961.35, \$184.19
- 25 **Wallonia**, Cadiz, Bill Burszynski, 157, \$28,057.92, \$178.71
- 26 **Bethabara**, Philpot, Herschel D Morgan, 223, \$38,442.08, \$172.39
- 27 **Chestnut Grove**, Lewisport, Brad Asbury, 108, \$18,388.63, \$170.27
- 28 **Northside**, Elizabethtown, 625, \$106,229.22, \$169.97
- 29 **Pleasant Hill**, Somerset, Marty Shadoan, 735, \$123,447.09, \$167.96
- 30 **Mount Zion**, Kuttawa, Ted A Yates, 109, \$18,305.05, \$167.94
- 31 **Gracey West Union**, Bradley Cornelius, 167, \$27,791.79, \$166.42
- 32 **Beaver**, Georgetown, R Dean Moore, 36, \$5,978.60, \$166.07
- 33 **Glen Lily**, Bowling Green, Joe Hendricks, 22, \$3,596.82, \$163.49
- 34 **Hardinsburg**, Doug Miller, 455, \$72,648.07, \$159.67
- 35 **Northside**, Almo, Brett A Miles, 277, \$43,526.53, \$157.14
- 36 **Sharpsburg**, Roger Jasper, 4, \$625.00, \$156.25
- 37 **Campbellsville**, Claude Alexander, 1658, \$254,619.16, \$153.57
- 38 **Bruners Chapel**, Harrodsburg, 592, \$90,673.72, \$153.17
- 39 **Owens Chapel**, Benton, James William Stom, 73, \$11,093.00, \$151.96
- 40 **Emmanuel**, Jenkins, Tony Carson, 100, \$15,013.93, \$150.14
- 41 **Greenville Second**, H Ray England, 1171, \$173,766.55, \$148.39
- 42 **Mount Vernon**, Jamestown, Daniel R Withers, 50, \$7,395.31, \$147.91
- 43 **Westport**, 272, \$39,438.85, \$145.00
- 44 **Somerset First**, Bill Haynes, 2030, \$287,795.64, \$141.77
- 45 **Trenton**, Dean Anderson, 300, \$42,283.06, \$140.94
- 46 **Monticello First**, David Coy Webb, 526, \$73,088.93, \$138.95
- 47 **Shady Grove**, Franklin, Mark Carroll, 22, \$3,000.00, \$136.36
- 48 **Rich Pond**, Bowling Green, Steven R Hussung, 1193, \$161,789.20, \$135.62
- 49 **Union Grove**, Bedford, Dennis R Plank, 30, \$4,066.00, \$135.53
- 50 **Emmanuel**, Shelbyville, David Roach, 36, \$4,867.03, \$135.20
- 51 **Sinking Fork**, Hopkinsville, John Segree, 405, \$54,030.26, \$133.41
- 52 **Owingsville**, Ronald Beams, 131, \$17,464.00, \$133.31
- 53 **New Horizon**, Glendale, Steven Hill, 135, \$17,940.76, \$132.89
- 54 **Oak Grove**, Cadiz, Michael Jones, 347, \$45,867.23, \$132.18
- 55 **Madison Avenue**, Covington, Edwin Kirkpatrick, 38, \$5,010.00, \$131.84
- 56 **Owensboro First**, Paul Strahan, 2921, \$384,757.57, \$131.72
- 57 **Totz**, Homer Johnson, 50, \$6,579.81, \$131.60
- 58 **Elizabethtown**, Danny Haynes, 204, \$26,790.00, \$131.32
- 59 **Lakewood**, Louisville, Scott Christian Hughes, 265, \$34,476.31, \$130.10
- 60 **Frenchburg**, Jeff Deel, 111, \$14,397.16, \$129.70
- 61 **Berean**, Elizabethtown, James Reed Webster, 94, \$12,135.75, \$129.10
- 62 **Guthrie**, Alan M'Cheyne Day, 170, \$21,811.24, \$128.30
- 63 **Upper Second Creek**, Hazard, Densmore Goodson, 221, \$28,265.63, \$127.90
- 64 **Victory**, Shelbyville, Jesse O Baxter, 78, \$9,963.03, \$127.73
- 65 **Beacon Hill**, Somerset, John Mark Toby, 1155, \$146,877.61, \$127.17
- 66 **Kimper Baptist Mission**, Pikeville, Shannon Bryant, 31, \$3,934.85, \$126.93
- 67 **Clinton First**, Howard L Kitter, 333, \$42,148.48, \$126.57
- 68 **Loyall First**, Roy Lucas, 190, \$23,893.28, \$125.75
- 69 **Boone's Creek**, Lexington, Matthew Perry, 398, \$49,990.64, \$125.60
- 70 **Friendship**, Campbellsville, William S Henderson, 168, \$21,053.26, \$125.32
- 71 **Eddyville First**, Timothy E Perdue, 665, \$82,327.78, \$123.80
- 72 **Meadow Hill**, Louisville, Ron Lasley, 128, \$15,656.29, \$122.31
- 73 **Lusbys Mill**, Owenton, Paul Briscoe, 82, \$10,025.54, \$122.26
- 74 **Wildwood**, Ashland, Jim Nichols, 408, \$49,839.54, \$122.16
- 75 **Kuttawa First**, Carl B Nelson, 402, \$49,104.42, \$122.15
- 76 **Craft Colly**, Ermine, James R Bates, 22, \$2,652.03, \$120.55
- 77 **Mount Carmel**, Williamstown, Ronald Angell, 417, \$49,216.00, \$118.02
- 78 **Christiansburg**, Bagdad, Douglas E Sturgeon, 235, \$27,490.01, \$116.98
- 79 **Cedar Creek**, Louisville, John Ewart, 800, \$93,488.30, \$116.86
- 80 **Graefenburg**, Waddy, Fred Moffatt, 653, \$76,056.62, \$116.47
- 81 **Milburn First**, Glen Stewart, 98, \$11,369.60, \$116.02
- 82 **Calhoun**, Richard Sams, 551, \$63,822.01, \$115.83
- 83 **Lawrenceburg First**, Robert Ehr, 1250, \$144,061.91, \$115.25
- 84 **Immanuel**, Louisville, John Ryan Fullerton, 157, \$18,055.29, \$115.00
- 85 **Hurricane**, Cadiz, Michael Wade Wimberly, 264, \$30,011.92, \$113.68
- 86 **Forest Grove**, Adairville, Mike Gluff, 89, \$10,076.18, \$113.22
- 87 **Clearview**, Leitchfield, Chester E Shartzler, 74, \$8,346.41, \$112.79
- 88 **Dixon First**, Richard W Stratton, 148, \$16,597.00, \$112.14
- 89 **Owenton First**, Daven Keith Watkins, 730, \$81,697.27, \$111.91
- 90 **Flint**, Murray, Donald Dewayne Chadwick, 173, \$19,320.34, \$111.68
- 91 **Pleasant Hill**, Campbellsville, James E Jones, 616, \$68,686.52, \$111.50
- 92 **Springfield**, Bland Mason, 313, \$34,881.56, \$111.44
- 93 **Fairview**, Russell Springs, Rick Mann, 237, \$26,341.56, \$111.15
- 94 **Long Ridge**, Owenton, Samuel E Owens, 231, \$25,369.47, \$109.82
- 95 **Seaton Park**, Louisville, Wayne T Eads, 44, \$4,806.25, \$109.23
- 96 **Freedom**, Stanford, Ben Curtis, 291, \$31,776.65, \$109.20
- 97 **Covington**, Pendleton, Tommy Rucker, 80, \$8,705.97, \$108.82
- 98 **West Providence**, Beaver Dam, Barry Black, 32, \$3,470.61, \$108.46
- 99 **Hopkinsville Second**, 1530, \$165,351.34, \$108.07
- 100 **Immanuel**, Lexington, Craig A Loscalzo, 4145, \$447,165.40, \$107.88

This report lists the top 100 congregations in per capita contributions to the Kentucky Baptist Convention for the fiscal year ended Aug. 31, 2006. The total dollar amount includes contributions channeled through the KBC to the Cooperative Program and restricted gifts to the KBC budget, as well as gifts to the Eliza Broadus Offering, Lottie Moon Christmas Offering, Annie Armstrong Easter Offering, children's home offering, hospital offering, KBC schools, hunger relief and other designated causes. Each entry includes the per-capita rank, church name and city, pastor's name, total membership, total dollars given and per capita amount.

Top 100 churches in per capita Cooperative Program

- 1 **Countryside**, Morganfield, Royce D Pile, 38, \$9,616.51, \$253.07
- 2 **Lighthouse Fellowship**, Louisville, Dallas Kratzer, 11, \$2,222.76, \$202.07
- 3 **Fountain Run First**, Robert Hermon Wilkins, 212, \$42,164.83, \$198.89
- 4 **Master's**, Lexington, Alex Kinchen, 124, \$24,501.16, \$197.59
- 5 **Mexico**, Marion, Timothy A Burdon, 365, \$70,255.21, \$192.48
- 6 **Riverview**, Catlettsburg, Charles Shelby Bush, 10, \$1,868.92, \$186.89
- 7 **Salem**, Campbellsville, Michael Edward Goodwin, 98, \$17,333.80, \$176.88
- 8 **Living Hope**, Bowling Green, Jason Pettus, 2346, \$407,938.76, \$173.89
- 9 **Briensburg**, Benton, C Charles Brasher Jr, 635, \$104,043.33, \$163.85
- 10 **Moscow**, Bardwell, Joe B Bagwell, 32, \$5,072.58, \$158.52
- 11 **Bethabara**, Philpot, Herschel D Morgan, 223, \$34,367.74, \$154.12
- 12 **Christ**, Cold Spring, Randy Coleman, 413, \$61,102.56, \$147.95
- 13 **Eastwood**, Bowling Green, Tom R James, 1136, \$166,126.03, \$146.24
- 14 **Lakeside**, Nancy, David King, 34, \$4,761.71, \$140.05
- 15 **Woodland**, Greenville, Thomas R Webb, 164, \$22,465.00, \$136.98
- 16 **Pleasant Hill**, Somerset, Marty Shadoan, 735, \$100,063.02, \$136.14
- 17 **Somerset First**, Bill Haynes, 2030, \$266,130.64, \$131.10
- 18 **Hardinsburg**, Doug Miller, 455, \$59,552.12, \$130.88
- 19 **Gracey West Union**, Bradley Cornelius, 167, \$21,791.79, \$130.49
- 20 **Emmanuel**, Jenkins, Tony Carson, 100, \$12,947.93, \$129.48
- 21 **Owens Chapel**, Benton, James William Stom, 73, \$9,393.00, \$128.67
- 22 **Good Hope**, Campbellsville, J Alvin Hardy, 224, \$28,295.81, \$126.32
- 23 **Bruners Chapel**, Harrodsburg, 592, \$74,477.22, \$125.81
- 24 **Indian Creek**, Cynthiana, Tom Moore, 6, \$750.00, \$125.00
- 25 **Upper Second Creek**, Hazard, Densmore Goodson, 221, \$27,415.63, \$124.05
- 26 **Victory**, Shelbyville, Jesse O Baxter, 78, \$9,667.88, \$123.95
- 27 **Living Hope**, Louisville, Jack C Naylor, 200, \$24,097.79, \$120.49
- 28 **Lusbys Mill**, Owenton, Paul Briscoe, 82, \$9,510.97, \$115.99
- 29 **Chestnut Grove**, Lewisport, Brad Asbury, 108, \$12,404.34, \$114.86
- 30 **Northside**, Elizabethtown, 625, \$71,109.02, \$113.77
- 31 **Totz**, Homer Johnson, 50, \$5,579.81, \$111.60
- 32 **Mount Zion**, Kuttawa, Ted A Yates, 109, \$12,135.05, \$111.33
- 33 **Northside**, Almo, Brett A Miles, 277, \$30,427.00, \$109.84
- 34 **Emmanuel**, Shelbyville, David Roach, 36, \$3,848.03, \$106.89
- 35 **Eddyville First**, Timothy E Perdue, 665, \$70,448.43, \$105.94
- 36 **New Horizon**, Glendale, Steven Hill, 135, \$14,274.50, \$105.74
- 37 **Kuttawa First**, Carl B Nelson, 402, \$41,373.95, \$102.92
- 38 **Meadow Hill**, Louisville, Ron Lasley, 128, \$13,171.37, \$102.90
- 39 **Frenchburg**, Jeff Deel, 111, \$11,320.16, \$101.98
- 40 **River of Life Community**, Springfield, Troy Douglas Shelton, 130, \$13,229.30, \$101.76
- 41 **Hopkinsville Second**, 1530, \$153,915.93, \$100.60
- 42 **Lawrenceburg First**, Robert Ehr, 1250, \$125,361.88, \$100.29
- 43 **Sinking Fork**, Hopkinsville, John Segree, 405, \$40,566.26, \$100.16
- 44 **Mount Vernon**, Jamestown, Daniel R Withers, 50, \$4,982.39, \$99.65
- 45 **Owensboro First**, Paul Strahan, 2921, \$290,066.69, \$99.30
- 46 **Pleasant Hill**, Campbellsville, James E Jones, 616, \$60,896.02, \$98.86
- 47 **Campbellsville**, Claude Alexander, 1658, \$163,809.42, \$98.80
- 48 **Rich Pond**, Bowling Green, Steven R Hussung, 1193, \$116,409.23, \$97.58
- 49 **Russell First**, Kenneth Gowin, 995, \$96,618.99, \$97.10
- 50 **Lakewood**, Louisville, Scott Christian Hughes, 265, \$25,673.32, \$96.88
- 51 **Westport**, 272, \$25,650.76, \$94.30
- 52 **Elizabethtown**, Danny Haynes, 204, \$19,104.00, \$93.65
- 53 **Wildwood**, Ashland, Jim Nichols, 408, \$37,766.26, \$92.56
- 54 **Mount Gilead**, Allensville, Joshua Tharpe, 22, \$2,021.85, \$91.90
- 55 **Salem**, 350, \$32,065.50, \$91.62
- 56 **Corinth**, McQuady, Jacob H Huffman III, 517, \$47,243.00, \$91.38
- 57 **Calhoun**, Richard Sams, 551, \$50,115.80, \$90.95
- 58 **Anchor**, Lexington, Paul B Sisk, 309, \$27,889.68, \$90.26
- 59 **Clinton First**, Howard L Kitter, 333, \$30,000.00, \$90.09
- 60 **Milburn First**, Glen Stewart, 98, \$8,773.60, \$89.53
- 61 **Dixon First**, Richard W Stratton, 148, \$13,240.00, \$89.46
- 62 **Owenton First**, Daven Keith Watkins, 730, \$65,302.11, \$89.45
- 63 **Long Ridge**, Owenton, Samuel E Owens, 231, \$20,620.47, \$89.27
- 64 **Buck Run**, Frankfort, Hershael W York, 1111, \$98,648.40, \$88.79
- 65 **Beaver**, Georgetown, R Dean Moore, 36, \$3,180.80, \$88.36
- 66 **Henderson First**, Todd A Linn, 2063, \$181,297.97, \$87.88
- 67 **New Bethel**, Eddyville, John R Baker, 77, \$6,757.11, \$87.75
- 68 **Cedar Bluff**, Princeton, J R Bruce, 166, \$14,327.04, \$86.31
- 69 **Jenson**, Pineville, 71, \$6,127.00, \$86.30
- 70 **Walnut Grove**, Fredonia, Jason Poe, 343, \$29,494.33, \$85.99
- 71 **Trenton**, Dean Anderson, 300, \$25,792.31, \$85.97
- 72 **Sand Spring**, Lawrenceburg, Michael R Hamrick, 1071, \$91,902.25, \$85.81
- 73 **Hopewell**, Corbin, Herschel S Walker, 562, \$48,050.00, \$85.50
- 74 **Berean**, Elizabethtown, James Reed Webster, 94, \$7,983.44, \$84.93
- 75 **Mount Carmel**, Williamstown, Ronald Angell, 417, \$35,234.00, \$84.49
- 76 **Pleasant Home**, Glencoe, 222, \$18,711.95, \$84.29
- 77 **Flint**, Murray, Donald Dewayne Chadwick, 173, \$14,577.20, \$84.26
- 78 **Reidland**, Paducah, Lawrence T Lewis, 888, \$74,304.81, \$83.68
- 79 **Blackford**, Hawesville, Samuel Lynn Huff, 427, \$35,706.89, \$83.62
- 80 **Barbourville First**, Shane Nickell, 974, \$81,211.53, \$83.38
- 81 **Williamstown**, Stephen C Rice, 722, \$59,912.54, \$82.98
- 82 **Loyall First**, Roy Lucas, 190, \$15,609.08, \$82.15
- 83 **Fairview**, Waynesburg, 375, \$30,647.64, \$81.73
- 84 **Dripping Spring**, Olmstead, Jeffrey G Noffsinger, 403, \$32,889.41, \$81.61
- 85 **Rosebower**, Paducah, Kenneth E Puckett, 666, \$54,294.11, \$81.52
- 86 **Clay First**, Jeff S McMain, 562, \$45,683.92, \$81.29
- 87 **Sharpsburg**, Roger Jasper, 4, \$325.00, \$81.25
- 88 **Shelbyville First**, Edward H Erwin, 1304, \$105,756.88, \$81.10
- 89 **Immanuel**, Lexington, Craig A Loscalzo, 4145, \$335,742.27, \$81.00
- 90 **Sharpe Missionary**, Benton, Jeremy Short, 562, \$45,337.57, \$80.67
- 91 **Boone's Creek**, Lexington, Matthew Perry, 398, \$31,741.81, \$79.75
- 92 **White Plains**, Scottsville, Phillip Rogers, 289, \$22,891.44, \$79.21
- 93 **Greenview**, Florence, Stephen E Turner, 233, \$18,451.59, \$79.19
- 94 **Pleasant Grove**, Owensboro, Kenneth A Stone, 737, \$58,281.00, \$79.08
- 95 **Stanton**, William Boldt, 189, \$14,916.27, \$78.92
- 96 **Westport Road**, Louisville, Chip Lee Pendleton, 1350, \$106,532.88, \$78.91
- 97 **Craft Colly**, Ermine, James R Bates, 22, \$1,735.03, \$78.87
- 98 **Central City First**, Robert K Lowery, 1360, \$107,154.26, \$78.79
- 99 **Fairlane**, Alexandria, Curtis Combs, 144, \$11,334.64, \$78.71
- 100 **Potters House Worship Center**, Smithland, Fred P Lowrance, 331, \$26,015.44, \$78.60

This report lists the top 100 congregations in per capita contributions to the Kentucky Baptist Convention's Cooperative Program for the fiscal year ended Aug. 31, 2006. Each entry includes the per-capita rank, church name and city, pastor's name, total membership, total dollars given and per capita amount.

This report is for the period Sept. 1, 2005, through Aug. 31, 2006. The first column shows fiscal year 2005 Cooperative Program gifts, the second shows fiscal year 2006 Cooperative Program gifts. The third column (Other) shows total fiscal 2006 contributions other than Cooperative Program and includes all donations designated to one or more of the following areas: Baptist hospitals, child care, Christian education, Eliza Broadus offering, restricted KBC causes only (RKO), and SBC causes such as Annie Armstrong and Lottie Moon offerings, foreign and home mission boards and other designations. All donations shown were given through the KBC accounting services department; the report was prepared by the KBC information services department. Refer questions to Angela Leshon, KBC accounting services department, (502) 489-3319.

ASSOCIATION/ CHURCH	COP 2004-2005	COP 2005-2006	OTHER 2005-2006
Allen Association			
Bays Fork	\$6,358.80	\$6,422.94	\$1,214.00
Dover	\$0.00	\$0.00	\$620.12
Holland	\$2,135.92	\$2,258.28	\$2,200.00
Liberty	\$5,354.94	\$5,320.98	\$1,797.00
Mount Gilead	\$500.00	\$0.00	\$335.00
New Hope	\$2,902.74	\$1,885.94	\$1,705.00
New Middle Fork	\$200.00	\$533.04	\$0.00
Rough Creek	\$120.00	\$120.00	\$700.00
Scottsville	\$34,433.34	\$25,964.93	\$1,817.56
Trammel Fork Missionary	\$600.00	\$600.00	\$1,593.00
White Plains	\$11,545.79	\$22,891.44	\$33,803.90
Subtotals	\$64,151.53	\$65,997.55	\$45,785.58

ASSOCIATION/ CHURCH	COP 2004-2005	COP 2005-2006	OTHER 2005-2006
Anderson Association			
Allton	\$24,723.62	\$5,000.00	\$6,606.04
Ballard	\$3,093.24	\$3,259.10	\$147.00
Fellowship	\$1,200.00	\$1,100.00	\$661.00
Freedom	\$1,775.00	\$2,036.00	\$400.00
Friendship	\$0.00	\$0.00	\$0.00
Goshen	\$4,581.00	\$4,729.00	\$1,500.00
Glenboro	\$1,924.00	\$1,702.00	\$608.45
Hope Community	\$1,000.00	\$2,000.00	\$0.00
Lawrenceburg First	\$134,757.17	\$125,361.88	\$18,700.03
Mount Pleasant	\$1,420.00	\$2,077.00	\$0.00
Pleasant Grove	\$275.00	\$250.00	\$450.00
Sand Spring	\$94,353.95	\$91,902.25	\$13,584.25
Tyrene	\$0.00	\$0.00	\$0.00
Van Buren	\$1,800.00	\$1,830.10	\$160.00
Subtotals	\$270,902.98	\$241,247.33	\$42,816.77

ASSOCIATION/ CHURCH	COP 2004-2005	COP 2005-2006	OTHER 2005-2006
Bell Association			
Bell Co Forest Camp Mission	\$0.00	\$0.00	\$0.00
Bennetts Fork	\$0.00	\$0.00	\$0.00
Bethlehem	\$2,226.66	\$2,686.33	\$1,373.00
Binghamtown	\$7,000.08	\$7,000.08	\$0.00
Blackmont	\$600.00	\$600.00	\$348.82
Callaway	\$987.10	\$908.87	\$1,480.00
Chenoa	\$0.00	\$0.00	\$0.00
Dean Memorial	\$0.00	\$0.00	\$0.00
Dunlap	\$0.00	\$0.00	\$0.00
East Cumberland Avenue	\$16,762.00	\$17,585.00	\$4,476.20
East Jellico	\$5,158.00	\$5,766.00	\$2,775.00
Fonde	\$0.00	\$0.00	\$0.00
Gap Fellowship	\$1,850.00	\$833.50	\$160.00
Garmead	\$0.00	\$0.00	\$0.00
Hosnian	\$3,890.00	\$2,946.50	\$50.00
Insuall	\$0.00	\$0.00	\$0.00
Jenson	\$0.00	\$6,127.00	\$0.00
Mill Creek	\$600.00	\$550.00	\$0.00
Moss Chapel	\$360.00	\$540.00	\$1,000.00
Mount Hebron	\$0.00	\$0.00	\$0.00
Mount Mary	\$0.00	\$0.00	\$0.00
Newtown	\$233.20	\$208.90	\$0.00
Northside	\$201.17	\$699.38	\$2,813.25
Old Straight Creek	\$0.00	\$0.00	\$0.00
Old Yellow Creek	\$10,880.06	\$12,302.52	\$15,684.22
Outreach	\$0.00	\$0.00	\$0.00
Pathfork	\$0.00	\$0.00	\$0.00
Pine Grove	\$0.00	\$0.00	\$0.00
Pineville First	\$13,230.62	\$16,775.33	\$9,966.97
Red Oak	\$0.00	\$0.00	\$0.00
Riverside	\$4,364.31	\$4,506.57	\$3,432.56
Riverview	\$763.66	\$789.65	\$1,467.00
Southside	\$10,137.51	\$7,851.03	\$6,376.50
Stoney Fork	\$255.00	\$325.00	\$0.00
Tracy Branch	\$0.00	\$0.00	\$0.00
Trinity	\$300.00	\$300.00	\$862.00
Tugglesville	\$0.00	\$0.00	\$0.00
Victory Missionary	\$1,601.34	\$1,565.53	\$0.00
Wasioato	\$600.00	\$600.00	\$2,000.00
West Cumberland Avenue	\$1,820.87	\$2,279.81	\$1,338.00
West Pineville	\$2,897.56	\$3,913.30	\$1,672.89
Subtotals	\$86,719.14	\$97,660.30	\$57,276.41

ASSOCIATION/ CHURCH	COP 2004-2005	COP 2005-2006	OTHER 2005-2006
Blackford Association			
Blackford	\$29,135.86	\$35,706.89	\$3,561.00
Central	\$10,523.46	\$9,050.97	\$1,346.31
Chestnut Grove	\$12,582.07	\$12,404.34	\$5,984.29
Dawson Memorial	\$5,069.36	\$5,139.00	\$972.00
Friendly Grove	\$0.00	\$0.00	\$0.00
Friendship	\$0.00	\$0.00	\$0.00
Hawesville	\$42,911.68	\$38,082.46	\$10,282.69
Levisport	\$36,373.15	\$33,145.71	\$35,423.42
Levisport First	\$964.01	\$1,754.66	\$519.17
Mount Eden	\$11,766.50	\$11,665.28	\$1,830.25
New Life	\$306.34	\$392.59	\$1,564.87
Newton Springs	\$2,030.00	\$2,025.59	\$620.58
Old Panther Creek	\$2,694.00	\$3,070.00	\$1,955.00
Patesville	\$0.00	\$0.00	\$2,500.00
Pellville	\$23,285.21	\$23,147.30	\$15,215.71
Roseville	\$0.00	\$0.00	\$0.00

ASSOCIATION/ CHURCH	COP 2004-2005	COP 2005-2006	OTHER 2005-2006
Union	\$4,769.42	\$3,069.57	\$8,333.63
West Point	\$661.00	\$273.00	\$0.00
Subtotals	\$183,072.06	\$178,927.36	\$90,108.92

ASSOCIATION/ CHURCH	COP 2004-2005	COP 2005-2006	OTHER 2005-2006
Blood River Association			
Alltona Missionary	\$32,495.80	\$29,120.66	\$10,287.90
Aurora	\$4,751.50	\$4,870.59	\$2,987.00
Bethel	\$25,029.00	\$20,433.00	\$9,746.00
Bethlehem	\$6,199.61	\$5,872.07	\$82.00
Blood River	\$1,941.50	\$3,130.00	\$357.00
Briensburg	\$106,387.95	\$104,043.33	\$12,918.02
Cherry Corner	\$7,989.65	\$9,053.62	\$3,435.00
Coldwater	\$600.00	\$610.00	\$1,284.00
Dexter	\$450.00	\$450.00	\$94.27
East Marshall	\$1,026.00	\$1,180.00	\$86.00
Elva	\$2,817.27	\$3,033.90	\$0.00
Ferguson Springs	\$600.00	\$600.00	\$728.00
Flint	\$10,011.03	\$14,577.20	\$4,743.14
Gilbertsville	\$7,105.16	\$3,966.89	\$770.00
Grace	\$8,526.67	\$13,261.41	\$2,443.00
Hamlet Missionary	\$6,462.09	\$5,589.00	\$1,306.85
Hazel	\$24,621.61	\$31,031.96	\$6,021.14
Hilltop	\$1,642.59	\$1,740.25	\$0.00
Kirksey	\$2,171.00	\$1,826.71	\$676.00
Lakeview	\$10,199.65	\$8,090.48	\$122.35
Ledbetter	\$1,093.38	\$974.10	\$487.03
Locust Grove	\$19,174.08	\$11,302.36	\$2,057.30
Memorial	\$31,298.55	\$28,532.02	\$5,104.84
New Bethel	\$420.00	\$3,230.00	\$30,127.00
New Harmony	\$44,387.45	\$38,721.06	\$7,928.75
New Mount Carmel	\$2,845.02	\$3,236.85	\$1,200.00
New Providence	\$0.00	\$0.00	\$0.00
New Zion	\$10,391.87	\$10,679.19	\$3,557.80
Northside	\$27,162.00	\$30,427.00	\$13,099.53
Oak Grove	\$6,579.04	\$8,413.87	\$1,071.00
Olive Missionary	\$19,732.74	\$19,063.02	\$366.50
Owens Chapel	\$8,616.00	\$9,393.00	\$1,700.00
Pleasant Hope	\$1,650.00	\$1,950.00	\$500.00
Pleasant Valley	\$3,600.00	\$3,600.00	\$125.00
Poplar Spring	\$6,851.80	\$6,283.07	\$2,384.69
Salem	\$2,799.46	\$0.00	\$0.00
Scotts Grove	\$4,683.87	\$4,316.91	\$842.00
Sharpe Missionary	\$40,566.00	\$45,337.57	\$2,730.00
Sinking Spring	\$1,200.00	\$1,650.00	\$1,521.36
South Marshall	\$240.00	\$240.00	\$0.00
Spring Creek	\$3,500.00	\$4,000.00	\$1,176.84
Sugar Creek	\$800.00	\$800.00	\$272.00
Symsonia	\$11,823.57	\$14,799.00	\$2,192.01
Union Ridge	\$5,353.41	\$5,464.68	\$1,314.21
Vanzora	\$7,575.00	\$10,287.08	\$2,865.21
Walnut Street	\$1,469.06	\$1,530.63	\$0.00
West Fork	\$9,396.41	\$8,890.73	\$1,975.00
Zions Cause	\$13,436.27	\$13,264.24	\$3,166.85
Subtotals	\$547,673.06	\$548,867.45	\$145,852.59

ASSOCIATION/ CHURCH	COP 2004-2005	COP 2005-2006	OTHER 2005-2006
Boones Creek Association			
Allansville	\$13,533.02	\$13,308.49	\$10,136.48
Beech Grove	\$1,731.06	\$1,001.84	\$106.00
Boone's Creek	\$22,527.39	\$31,741.81	\$18,248.83
Calvary	\$15,807.64	\$15,390.68	\$4,903.96
Central	\$168,789.08	\$148,984.12	\$65,365.46
Clay City	\$2,787.94	\$3,083.59	\$1,302.29
Corinth	\$4,874.07	\$5,316.99	\$2,989.90
Cow Creek	\$4,310.00	\$4,552.00	\$1,550.00
Emmanuel	\$3,197.45	\$2,426.47	\$6,616.00
Ephesus	\$6,740.00	\$10,150.00	\$1,618.78
Faith	\$360.00	\$360.00	\$240.00
Friendship	\$4,915.04	\$4,113.24	\$1,931.64
Greenbriar	\$100.00	\$0.00	\$0.00
Heidelberg	\$0.00	\$0.00	\$0.00
Heritage Baptist	\$0.00	\$8,448.96	\$6,309.56
Howards Mill	\$10,968.00	\$8,489.00	\$3,358.50
Irvine First	\$4,610.71	\$4,208.45	\$132.00
Ivory Hill	\$3,143.53	\$4,620.27	\$1,215.79
Jeffersonville	\$9,421.82	\$10,109.22	\$931.00
Kiddville	\$2,676.03	\$2,567.58	\$7,937.15
Macedonia	\$3,499.35	\$4,846.25	\$2,302.35
Means	\$2,095.00	\$2,515.00	\$0.00
Mount Olive	\$0.00	\$0.00	\$0.00
New Hope	\$1,167.00	\$1,168.48	\$1,880.00
Northside	\$14,726.70	\$12,789.42	\$6,060.80
Panola	\$2,100.68	\$2,358.75	\$173.00
Powells Valley	\$1,641.58	\$1,615.66	\$1,434.90
Providence	\$3,532.75	\$4,462.00	\$1,318.10
Providence	\$3,496.74	\$3,900.00	\$2,507.15
Reid Village	\$1,717.90	\$1,881.96	\$6,983.92
Salem	\$7,236.58	\$6,974.87	\$6,130.50
Spears Mill	\$8,750.00	\$9,750.00	\$515.00
Spring Street	\$4,187.00	\$3,984.00	\$2,081.00
Thomas	\$2,784.54	\$3,667.64	\$93.64
Valley View	\$0.00	\$137.79	\$0.00
Williams Memorial	\$3,876.71	\$3,909.01	\$1,450.96
Subtotals	\$341,305.31	\$342,783.54	\$167,824.66

ASSOCIATION/ CHURCH	COP 2004-2005	COP 2005-2006	OTHER 2005-2006
Booneville Association			
Big Creek	\$1,943.81	\$1,798.95	\$679.00
Booneville First	\$7,891.23	\$7,419.49	\$590.00
Calvary	\$0.00	\$0.00	\$0.00
Garrard	\$1,434.00	\$1,114.00	\$0.00
Gray Fork	\$0.00	\$0.00	\$0.00
Horse Creek	\$31,246.63	\$36,124.73	\$18,512.62
Island Creek	\$2,708.06	\$2,355.17	\$5,785.75
Lerose	\$650.00	\$551.82	\$80.00
Lilly Grove	\$392.83	\$155.91	\$0.00
Lytleton	\$8,177.36	\$7,879.00	\$5,046.50
Macedonia	\$0.00	\$0.00	\$0.00
Manchester	\$13,237.01	\$13,916.21	\$15,065.74
New Home	\$1,899.88	\$1,829.77	\$460.00
New Prospect	\$1,626.29	\$2,079.00	\$317.00
New Zion	\$240.00	\$220.00	\$0.00
Oneida	\$2,458.48	\$2,748.89	\$5,774.18
Pleasant Point	\$601.90	\$733.29	\$697.00
Pleasant Run	\$4,464.00	\$2,508.00	\$1,295.00
Royal Oak	\$540.00	\$540.00	\$550.00
Southside	\$61.49	\$448.65	\$0.00
Turkey Missionary	\$550.00	\$600.00	\$986.85
Upper Buffalo	\$300.00	\$320.00	\$45.00

ASSOCIATION/ CHURCH	COP 2004-2005	COP 2005-200
------------------------	------------------	-----------------

ASSOCIATION/ CHURCH	COP 2004-2005	COP 2005-2006	OTHER 2005-2006
Eaton Memorial	\$12,255.51	\$12,000.00	\$7,383.07
Fourth Street	\$0.00	\$0.00	\$414.00
Friendship	\$5,208.27	\$5,381.50	\$3,604.00
Garden Green	\$845.00	\$780.00	\$497.00
Glenville	\$17,409.50	\$18,270.53	\$6,751.62
Green Brier	\$2,147.82	\$2,245.23	\$751.97
Hall Street	\$27,734.76	\$10,712.49	\$12,139.23
Hopewell	\$0.00	\$0.00	\$165.00
Immanuel	\$0.00	\$0.00	\$0.00
Island	\$16,422.99	\$22,085.11	\$7,045.10
Karns Grove	\$12,525.62	\$10,286.29	\$565.00
Lewis Lane	\$20,163.88	\$12,124.82	\$350.00
Livermore	\$34,642.44	\$27,615.19	\$8,476.45
Living Faith	\$9,351.80	\$10,099.57	\$1,268.70
Macedonia	\$24,000.00	\$12,991.41	\$7,458.03
Maceo	\$15,448.90	\$14,996.78	\$2,270.00
Masonville	\$8,519.00	\$3,689.00	\$5,841.29
Mount Vernon	\$1,100.00	\$650.00	\$125.00
New Life	\$248.23	\$456.52	\$50.00
Newman	\$1,548.14	\$1,746.07	\$669.00
Owensboro First	\$268,462.08	\$290,066.69	\$94,690.88
Owensboro Third	\$27,774.50	\$27,530.12	\$13,855.76
Pack	\$0.00	\$3,258.74	\$0.00
Panther Creek	\$10,944.00	\$9,803.00	\$4,858.06
Parrish Avenue	\$4,140.00	\$0.00	\$1,727.00
Pleasant Grove	\$48,182.53	\$58,281.00	\$14,367.33
Pleasant Memorial	\$9,624.64	\$6,567.60	\$1,287.00
Pleasant Ridge	\$9,673.25	\$18,028.13	\$2,993.97
Red Hill	\$225.00	\$300.00	\$0.00
Ridgewood	\$1,644.59	\$1,644.71	\$250.00
Riverside	\$5,433.11	\$4,984.24	\$2,987.66
Sacramento	\$9,230.28	\$9,610.59	\$1,223.00
Seven Hills	\$0.00	\$0.00	\$372.00
Sorgho	\$7,188.01	\$7,557.93	\$2,952.00
South Hampton	\$6,914.00	\$7,459.00	\$2,250.00
Stanley	\$889.10	\$245.13	\$0.00
Station	\$4,078.06	\$4,461.40	\$1,798.00
Sugar Grove	\$11,183.89	\$11,008.65	\$4,800.00
Utica	\$13,390.18	\$14,341.86	\$4,083.45
Walnut Memorial	\$31,657.51	\$26,822.66	\$0.00
Whitesville	\$1,900.00	\$881.36	\$1,226.11
Wing Avenue	\$1,618.04	\$1,540.73	\$1,243.02
Yellow Creek	\$77,953.05	\$80,519.20	\$19,695.65
Yehington	\$5,172.86	\$4,999.58	\$0.00
Subtotals	\$1,038,775.73	\$1,022,327.51	\$320,294.84

East Lynn Association

Allendale	\$0.00	\$0.00	\$0.00
Bethel	\$0.00	\$0.00	\$0.00
Corinth Missionary	\$3,000.00	\$600.00	\$2,500.00
Holly Grove	\$4,723.50	\$5,205.49	\$0.00
Liberty	\$0.00	\$0.00	\$0.00
Mount Carmel	\$600.00	\$600.00	\$754.50
New Bethlehem	\$0.00	\$0.00	\$0.00
Rolling Fork	\$0.00	\$400.00	\$183.00
South Summersville	\$4,328.52	\$4,412.28	\$1,239.52
Union Band	\$0.00	\$200.00	\$0.00
Whickerville	\$0.00	\$0.00	\$0.00
Subtotals	\$12,652.02	\$11,417.77	\$4,677.02

East Union Association

Big Poplar Creek	\$0.00	\$0.00	\$0.00
Black Oak	\$0.00	\$0.00	\$0.00
Emlyn	\$0.00	\$0.00	\$0.00
Kensee	\$1,171.05	\$1,166.01	\$300.00
Louden	\$0.00	\$0.00	\$0.00
New Buffalo	\$0.00	\$0.00	\$0.00
New Hope	\$0.00	\$0.00	\$0.00
Old Poplar Creek	\$0.00	\$0.00	\$0.00
Pleasant Grove	\$0.00	\$0.00	\$0.00
Subtotals	\$1,171.05	\$1,166.01	\$300.00

Elkhorn Association

Anchor	\$10,810.00	\$27,889.68	\$5,126.41
Andover	\$2,000.00	\$5,000.00	\$1,266.00
Ashland Avenue	\$15,873.96	\$16,323.96	\$32,636.62
Beckerville	\$333.55	\$178.95	\$0.00
Bluegrass Deaf Mission	\$0.00	\$1,497.39	\$0.00
Broadway	\$31,082.84	\$47,671.77	\$16,544.54
Brookside	\$5,659.59	\$6,839.14	\$2,865.25
Cadentown	\$0.00	\$0.00	\$0.00
Calvary	\$100.00	\$0.00	\$300.00
Calvary	\$36,571.83	\$21,868.25	\$85,531.34
Cane Run	\$3,529.92	\$1,099.39	\$85.00
Central	\$0.00	\$0.00	\$0.00
Central	\$35,244.10	\$36,895.84	\$16,444.41
Chevy Chase	\$3,769.21	\$3,304.17	\$2,349.50
Clear Creek	\$6,129.68	\$7,753.96	\$0.00
Clover Bottom	\$1,800.00	\$1,350.00	\$70.00
Consolidated	\$1,550.00	\$3,600.00	\$0.00
Corbin First	\$900.00	\$6,050.00	\$8,243.49
Cornerstone	\$23,178.00	\$21,260.13	\$3,534.50
Crossroads	\$15,673.52	\$13,822.48	\$426.00
Davids Fork	\$600.00	\$400.00	\$0.00
Dry Run	\$5,969.00	\$4,426.51	\$2,792.85
Durbin Memorial	\$12,286.93	\$11,594.04	\$7,762.99
East Hickman	\$11,598.59	\$12,199.61	\$4,819.25
Eastside	\$1,937.65	\$1,353.93	\$0.00
Edgewood	\$19,717.29	\$21,724.90	\$14,602.74
Faith	\$250.00	\$2,808.74	\$1,287.02
Faith Center	\$0.00	\$0.00	\$0.00
Faith Covenant	\$600.00	\$600.00	\$0.00
Gano	\$35,853.14	\$44,882.75	\$8,796.26
Gardenside	\$14,044.80	\$4,451.25	\$6,173.00
Georgetown	\$31,668.57	\$29,466.28	\$16,379.28
Glens Creek	\$9,652.00	\$370.00	\$0.00
Grace	\$3,500.00	\$1,900.00	\$7,430.82
Great Crossing	\$13,411.74	\$14,128.23	\$2,463.00
Highlands	\$22,842.79	\$24,063.90	\$4,280.49
Hillcrest	\$6,195.10	\$6,301.00	\$3,030.30
Hillsboro	\$2,091.36	\$1,858.17	\$485.00
Imani	\$0.00	\$1,000.00	\$0.00
Immanuel	\$349,836.12	\$335,742.27	\$111,423.13
Immanuel Japanese Mission	\$0.00	\$240.00	\$0.00
Irishtown Mission	\$0.00	\$0.00	\$0.00
Lawrenceburg Community	\$2,720.08	\$2,828.12	\$2,500.43
Lexington First	\$1,156.74	\$1,067.76	\$0.00

ASSOCIATION/ CHURCH	COP 2004-2005	COP 2005-2006	OTHER 2005-2006
Living Hope Fellowship	\$1,200.00	\$0.00	\$0.00
Long Lick	\$7,185.61	\$6,222.32	\$1,165.61
Lyle Road	\$130.12	\$128.95	\$0.00
Main Street	\$0.00	\$0.00	\$0.00
Mallard Point	\$4,655.53	\$4,643.00	\$4,146.12
Maranatha	\$0.00	\$0.00	\$0.00
Midway	\$2,937.50	\$3,000.00	\$694.00
Millersburg	\$0.00	\$0.00	\$0.00
Millville	\$11,308.24	\$10,105.44	\$3,099.67
Mount Freedom	\$9,781.54	\$9,606.45	\$4,216.84
Mount Pleasant	\$6,589.70	\$6,078.84	\$6,840.12
Mount Sterling First	\$15,333.38	\$18,750.00	\$12,365.10
Mount Vernon	\$0.00	\$0.00	\$866.78
Nada Mission	\$0.00	\$0.00	\$0.00
New Hope	\$11,098.27	\$15,021.96	\$2,341.57
Nicholasville	\$8,512.50	\$11,107.76	\$12,915.00
North View	\$22,574.07	\$24,146.76	\$2,682.80
Open Door Community	\$783.99	\$580.36	\$0.00
Palomar	\$20,977.16	\$16,748.13	\$17,842.88
Paris First	\$44,828.86	\$48,087.21	\$14,213.00
Parkway	\$17,247.42	\$17,898.88	\$8,399.65
Penn Avenue	\$0.00	\$0.00	\$0.00
Pinckard	\$28,644.63	\$27,890.96	\$3,403.98
Porter Memorial	\$430,879.74	\$365,078.18	\$71,570.00
Praise Tabernacle	\$0.00	\$0.00	\$0.00
River of Life	\$1,639.20	\$1,310.91	\$0.00
Riverview	\$0.00	\$0.00	\$0.00
Rosemont	\$28,988.39	\$28,967.38	\$6,693.26
Royal Springs Southern	\$0.00	\$0.00	\$0.00
Russell Cave	\$1,287.10	\$2,621.83	\$1,800.91
Sadieville	\$0.00	\$0.00	\$0.00
Seventh Street	\$0.00	\$0.00	\$0.00
Shawhan	\$1,047.00	\$1,166.00	\$600.00
Silas	\$4,063.43	\$3,815.17	\$70.00
South Elkhorn	\$10,770.23	\$12,814.87	\$3,299.00
Southern Heights	\$46,074.90	\$33,911.70	\$5,081.17
Southside	\$0.00	\$0.00	\$0.00
Springdale at Man O War	\$0.00	\$0.00	\$0.00
Stamping Ground	\$6,668.00	\$5,701.20	\$8,754.14
Stonewall	\$0.00	\$0.00	\$0.00
Tatesbrook	\$6,059.64	\$6,167.33	\$0.00
Trinity	\$1,914.00	\$8,326.00	\$760.40
Versailles	\$59,287.69	\$67,896.50	\$34,334.97
Victory	\$41,801.08	\$33,831.31	\$21,727.27
White Sulphur	\$7,101.41	\$6,331.35	\$5,175.00
Winchester First	\$10,116.44	\$5,519.54	\$10,213.40
Subtotals	\$1,611,434.87	\$1,549,288.86	\$634,921.86

Enterprise Association

Allen	\$3,600.00	\$3,600.00	\$3,028.83
Benedict	\$836.76	\$812.00	\$0.00
Brushy Fork Missionary	\$1,300.00	\$1,200.00	\$702.00
Fitzpatrick First	\$9,960.00	\$9,829.55	\$1,975.00
Garrett First	\$900.00	\$1,800.00	\$2,795.00
Inez First	\$9,113.03	\$4,465.70	\$4,895.00
Ivyton	\$0.00	\$0.00	\$0.00
Jacks Creek	\$701.96	\$765.85	\$0.00
Lancer	\$1,675.15	\$1,432.39	\$0.00
Liberty	\$2,085.23	\$2,116.99	\$1,072.68
Licking River	\$1,125.00	\$2,400.00	\$1,647.70
Martin First	\$461.17	\$330.94	\$200.00
Mashfork	\$0.00	\$0.00	\$0.00
Maytown First	\$1,700.00	\$600.00	\$0.00
McDowell First	\$5,388.67	\$6,207.12	\$2,485.87
Mount Beulah	\$780.00	\$530.00	\$200.00
Paintsville First	\$41,306.30	\$43,021.85	\$27,068.31
Pine Grove	\$0.00	\$0.00	\$0.00
Pleasant Home	\$1,046.00	\$1,198.00	\$3,197.00
Prestonsburg First	\$27,773.86	\$28,244.27	\$3,624.00
Salversville First	\$9,801.42	\$4,144.56	\$3,142.50
Tonahawk Missionary	\$0.00	\$0.00	\$150.00
Topmost	\$525.00	\$525.00	\$1,100.00
Warfield Missionary	\$1,100.00	\$1,200.00	\$1,300.00
West Van Lear	\$300.00	\$300.00	\$0.00
Wheelwright First	\$75.27	\$53.05	\$70.50
Subtotals	\$121,560.82	\$114,777.27	\$58,654.39

Franklin Association

Bellepoint	\$5,863.49	\$7,157.48	\$7,206.28
Bethel	\$2,183.00	\$2,555.12	\$7,902.22
Buck Run	\$91,672.00	\$98,648.40	\$18,621.89
Calvary	\$4,295.38	\$4,889.65	\$1,688.73
Camp Pleasant	\$525.00	\$525.00	\$0.00
Cedar Grove	\$0.00	\$0.00	\$2,078.95
Crestwood	\$45,879.04	\$68,377.46	\$12,324.40
East Frankfort	\$12,574.27	\$15,847.34	\$2,422.94
Evergreen	\$8,000.04	\$8,666.70	\$11,177.00
Faith	\$9,857.30	\$9,264.88	\$11,798.58
Family	\$0.00	\$0.00	\$0.00
Farmdale	\$8,000.00	\$8,075.00	\$500.00
First Corinthian	\$0.00	\$0.00	\$0.00
Forks of Elkhorn	\$31,050.52	\$41,181.29	\$15,715.00
Frankfort First	\$0.00	\$0.00	\$1,000.00
Hillcrest	\$12,548.40	\$15,444.17	\$4,110.22
Immanuel	\$0.00	\$830.00	\$10,000.00
Lebanon	\$0.00	\$0.00	\$0.00
Memorial	\$38,060.02	\$35,240.99	\$14,223.63
Mount Carmel	\$1,630.00	\$0.00	\$1,434.00
Mount Vernon	\$0.00	\$0.00	\$663.91
North Benson	\$8,822.56	\$10,532.78	\$5,197.88
North Fork	\$1,888.78	\$2,000.68	\$3,382.95
North Frankfort	\$3,300.00	\$3,600.00	\$1,027.00
Peaks Mill	\$0.00	\$400.00	\$64.00
Pleasant Ridge	\$904.58	\$1,034.19	\$2,090.00
Providence	\$16,984.40	\$15,631.43	\$2,525.01
St John	\$2,802.04	\$3,573.65	\$1,100.00
Swallowfield	\$600.00	\$600.00	\$335.00
Thornhill	\$40,031.39	\$17,400.76	\$4,043.81
Trinity	\$550.00	\$550.00	\$525.00
Truth	\$0.00	\$50.00	\$0.00
Westview	\$319.58	\$0.00	\$0.00
Subtotals	\$348,341.79	\$372,076.97	\$143,158.40

Freedom Association

Albany First	\$18,730.00	\$18,550.00	\$210.00
Branham Grove	\$0.00	\$0.00	\$887.00
Burkesville	\$11,950.30	\$13,951.43	\$3,942.25

ASSOCIATION/ CHURCH	COP 2004-2005	COP 2005-2006	OTHER 2005-2006
Cave Springs	\$10,097.00	\$9,830.00	\$1,650.00
Central Grove	\$4,917.88	\$4,530.37	\$1,515.82
Fairland	\$0.00	\$0.00	\$410.00
Grace Union	\$0.00	\$215.00	\$0.00
Green Grove Missionary	\$953.00	\$1,400.00	\$532.00
New Sulphur Missionary	\$0.00	\$0.00	\$0.00
Pikeview	\$2,525.00	\$2,414.00	\$0.00
Stony Point	\$13,126.17	\$14,083.55	\$3,323.00
Subtotals	\$62,299.35	\$64,974.35	\$12,470.07

Gasper River Association

Aberdeen	\$20,151.00	\$17,959
----------	-------------	----------

ASSOCIATION/ CHURCH	COP 2004-2005	COP 2005-2006	OTHER 2005-2006
Candle Ridge	\$0.00	\$0.00	\$599.20
Coles Branch	\$0.00	\$0.00	\$0.00
Concord	\$0.00	\$0.00	\$0.00
Dewitt	\$7,337.08	\$7,943.91	\$4,461.00
Dripping Springs	\$0.00	\$0.00	\$0.00
East Barbourville	\$21,419.62	\$21,376.14	\$18,584.26
Greys	\$1,547.92	\$2,143.36	\$1,159.35
Greasy Creek	\$0.00	\$0.00	\$0.00
Green Road	\$1,125.00	\$900.00	\$0.00
Highland Park	\$3,876.49	\$3,931.48	\$1,579.00
Indian Creek	\$892.00	\$701.00	\$0.00
Keck	\$4,376.31	\$4,240.55	\$7,568.08
Liberty Missionary	\$650.00	\$700.00	\$609.89
Locust Grove	\$1,200.00	\$1,200.00	\$2,184.00
Lynn Camp	\$7,581.88	\$7,039.95	\$675.00
Mount Olivet	\$1,296.77	\$977.75	\$1,587.00
New Bethel	\$0.00	\$0.00	\$200.00
North Corbin Missionary	\$0.00	\$0.00	\$0.00
Northside	\$2,413.93	\$3,050.78	\$690.00
Old Flat Lick	\$0.00	\$0.00	\$0.00
Piney Grove	\$1,366.70	\$963.22	\$2,845.57
Pleasant Ridge	\$120.00	\$100.00	\$67.27
Poplar Grove	\$21,152.18	\$30,472.89	\$3,875.90
River	\$0.00	\$0.00	\$163.00
Roadside	\$1,501.32	\$1,570.34	\$348.75
Salem	\$0.00	\$0.00	\$0.00
Salt Gum	\$743.20	\$956.54	\$2,280.46
Sinking Valley	\$0.00	\$0.00	\$228.28
Springfield	\$2,056.07	\$1,819.70	\$2,314.50
Swan Pond	\$1,104.78	\$1,354.22	\$3,057.37
Turkey Creek	\$4,937.53	\$4,163.16	\$0.00
Walker	\$405.66	\$360.00	\$0.00
Young Grove	\$0.00	\$0.00	\$0.00
Subtotals	\$167,142.18	\$189,238.86	\$75,144.88

Laurel River Association

Arthur Ridge	\$324.45	\$331.87	\$75.00
Baldrock	\$1,471.14	\$1,493.50	\$500.00
Bond	\$3,000.00	\$3,000.00	\$7,125.14
Calvary	\$25,383.14	\$30,433.42	\$19,199.44
Corinth	\$8,895.62	\$18,069.44	\$38,478.10
East Bernstadt First	\$42,223.44	\$41,665.96	\$19,979.00
East Pittsburg	\$2,810.15	\$4,255.96	\$649.18
Emmanuel	\$168.66	\$168.60	\$50.00
Greenmount	\$2,927.50	\$2,472.30	\$722.93
Hart Missionary	\$5,143.34	\$5,011.27	\$10,098.58
Hawk Creek	\$3,072.00	\$4,346.00	\$6,700.00
Hazel Patch	\$0.00	\$0.00	\$0.00
Horse Creek Road	\$2,668.72	\$2,353.84	\$0.00
Jackson Memorial	\$156.39	\$158.88	\$300.00
Laurel Chapel	\$0.00	\$0.00	\$0.00
Laurel River	\$6,913.64	\$7,279.20	\$12,357.20
Liberty	\$12,681.86	\$13,585.25	\$6,393.83
Lick Fork	\$314.40	\$4,624.00	\$9,522.18
Lily	\$3,743.25	\$1,100.00	\$3,167.36
London First	\$46,403.68	\$30,565.44	\$20,527.75
Long Branch	\$2,510.00	\$2,894.00	\$500.00
Mount Zion	\$765.44	\$841.58	\$0.00
New Salem	\$2,168.38	\$3,992.71	\$1,740.00
Old Salem	\$220.00	\$240.00	\$2,960.00
Pilgrims Rest	\$1,009.26	\$1,030.29	\$0.00
Pine Grove	\$3,702.00	\$4,260.00	\$635.00
Pleasant Grove	\$3,633.98	\$7,552.21	\$2,755.50
Providence	\$17,926.46	\$20,824.68	\$6,754.71
Robinson Creek	\$646.83	\$136.78	\$5,710.43
Sinking Creek	\$2,521.12	\$1,166.00	\$360.00
Slate Hill	\$6,146.38	\$5,584.94	\$2,396.00
Slate Lick	\$0.00	\$0.00	\$0.00
South Fariston	\$0.00	\$0.00	\$0.00
Swiss Colony	\$26,880.00	\$26,928.89	\$3,356.27
Tidal Wave	\$0.00	\$0.00	\$0.00
Union	\$0.00	\$0.00	\$0.00
Weaver	\$6,239.25	\$7,652.70	\$3,668.00
West London	\$4,503.00	\$4,050.00	\$2,305.00
White Oak	\$200.00	\$500.00	\$0.00
Subtotals	\$247,665.48	\$258,342.71	\$189,186.60

Liberty Association

Antioch	\$833.72	\$600.00	\$1,599.96
Browders Chapel	\$120.00	\$120.00	\$0.00
Calvary	\$44,965.08	\$51,283.09	\$20,204.81
Canmer	\$851.40	\$628.12	\$1,397.70
Cave City	\$1,670.00	\$1,900.00	\$3,367.00
Cave Spring	\$784.70	\$802.22	\$1,431.00
Cedar Cliff	\$0.00	\$0.00	\$0.00
Cedar Grove	\$4,321.69	\$4,918.89	\$438.76
Coral Hill	\$26,422.88	\$29,141.99	\$3,278.00
Edmonton Worship Center	\$14,360.06	\$14,482.20	\$10,078.24
Glasgow	\$55,120.23	\$48,315.97	\$15,790.00
Grace Union Missionary	\$957.68	\$727.60	\$87.21
Hardyville	\$3,820.24	\$1,674.42	\$0.00
Horse Cave	\$26,993.45	\$28,371.25	\$4,005.00
Iglesia Emanuel	\$0.00	\$0.00	\$0.00
Immanuel	\$28,067.26	\$30,214.67	\$9,510.00
Lifeway Community	\$0.00	\$0.00	\$0.00
Little Bethel	\$166.42	\$0.00	\$494.73
Lonoke	\$1,344.49	\$1,274.29	\$228.22
Mount Tabor	\$2,334.38	\$2,183.23	\$1,908.50
New Liberty	\$0.00	\$0.00	\$0.00
Park City	\$2,826.40	\$3,282.85	\$1,606.00
Pleasant Valley	\$12,423.80	\$12,163.14	\$7,694.35
Poplar Spring Missionary	\$1,100.00	\$1,200.00	\$2,620.00
Rowletts	\$3,269.33	\$3,653.97	\$8,736.04
Salem	\$4,559.20	\$4,299.95	\$1,718.68
Shady Grove Missionary	\$5,243.34	\$4,528.14	\$1,218.11
Siloam	\$2,000.00	\$2,200.00	\$9,515.01
South Fork	\$3,073.98	\$3,071.27	\$4,000.00
Southside	\$6,273.81	\$6,088.50	\$500.00
Three Springs	\$869.30	\$1,052.32	\$0.00
Walnut Hill	\$390.00	\$330.00	\$747.00
Zion	\$150.00	\$150.00	\$100.00
Subtotals	\$255,312.84	\$258,658.08	\$112,274.32

Lincoln County Association

Blue Lick	\$4,985.80	\$4,756.60	\$2,036.84
Calvary Hill	\$13,084.31	\$9,273.41	\$2,814.00
Crab Orchard	\$1,225.00	\$1,820.00	\$4,763.50

ASSOCIATION/ CHURCH	COP 2004-2005	COP 2005-2006	OTHER 2005-2006
Double Springs	\$5,938.43	\$2,739.04	\$626.00
Drakes Creek	\$3,417.88	\$2,896.51	\$1,162.03
Fairview	\$30,400.09	\$30,647.64	\$6,156.30
Freedom	\$16,957.00	\$16,902.00	\$14,874.65
Friendship	\$0.00	\$0.00	\$0.00
Geneva	\$950.00	\$886.00	\$246.00
Harris Creek	\$1,314.95	\$864.94	\$536.05
Hustontville	\$4,400.00	\$4,800.00	\$4,058.38
Locust Grove	\$650.00	\$600.00	\$520.00
McKinney	\$5,517.03	\$4,760.07	\$283.00
Mount Hebron	\$1,879.77	\$1,814.89	\$274.15
Mount Salem	\$4,711.29	\$7,583.80	\$1,626.01
New Hope	\$0.00	\$0.00	\$5,916.40
New Salem	\$9,716.07	\$11,455.87	\$950.65
Olive	\$1,285.40	\$1,284.09	\$300.00
Parlor Grove	\$3,949.38	\$3,605.23	\$1,101.16
Pilot	\$548.04	\$464.41	\$889.91
Pleasant Point	\$4,009.00	\$2,438.00	\$878.00
Pleasant View	\$36,788.10	\$44,726.00	\$18,046.43
Poly Ann	\$465.00	\$1,304.00	\$220.00
Pond	\$1,137.24	\$872.01	\$310.55
South Fork	\$839.83	\$865.32	\$200.00
Stanford	\$2,581.48	\$20,514.12	\$23,545.09
Watts Chapel	\$4,256.00	\$3,600.00	\$5,658.00
Subtotals	\$181,007.09	\$181,472.95	\$97,993.10

Little Bethel Association

Charity	\$0.00	\$0.00	\$0.00
Charleston First Missionary	\$6,150.11	\$7,363.14	\$4,459.36
Concord Missionary	\$10,241.62	\$10,999.41	\$2,655.82
Corinth	\$0.00	\$0.00	\$300.00
Dalton	\$1,965.12	\$2,289.72	\$3,582.00
Dawson Springs First	\$12,272.00	\$12,025.00	\$9,847.50
Diamond	\$0.00	\$0.00	\$141.00
Dixon First	\$6,918.00	\$13,240.00	\$3,357.00
Dunn Missionary	\$5,936.38	\$8,167.38	\$719.00
Earlington First	\$14,244.19	\$16,812.36	\$9,256.16
Freedom	\$0.00	\$0.00	\$0.00
Grapevine	\$38,610.69	\$40,807.21	\$9,915.00
Green Grove Missionary	\$0.00	\$0.00	\$0.00
Hanson First	\$45,758.30	\$46,734.86	\$1,273.00
Harmony	\$1,184.25	\$938.20	\$1,221.00
Immanuel	\$9,674.58	\$3,210.60	\$590.00
Johnston Island	\$4,971.00	\$4,932.00	\$3,243.36
LaFayette	\$0.00	\$0.00	\$0.00
Lakeview Missionary	\$1,387.87	\$1,200.00	\$3,053.55
Liberty	\$33,874.95	\$25,751.12	\$1,605.81
Madisonville First	\$71,768.36	\$44,698.00	\$50,973.17
Madisonville Second	\$35,225.18	\$31,524.02	\$9,105.84
Manitou	\$0.00	\$1,369.00	\$566.71
Mannington	\$480.00	\$400.00	\$8,328.00
Mortons Gap First	\$2,340.28	\$2,205.60	\$3,000.12
Mortons Gap Second	\$4,151.44	\$4,076.00	\$1,881.50
Nebo	\$7,647.13	\$6,739.46	\$965.81
New Hope	\$328.68	\$167.00	\$0.00
New Salem	\$20,613.10	\$19,475.02	\$1,700.00
Nortonville	\$16,438.16	\$19,791.57	\$5,509.75
Olive Branch	\$20,498.04	\$23,372.75	\$4,186.00
Park Avenue	\$16,044.05	\$16,144.43	\$4,049.00
Pleasant Grove	\$3,625.75	\$3,629.48	\$1,695.00
Pleasant Valley Missionary	\$8,251.91	\$8,853.42	\$1,700.00
Pleasant View	\$2,247.52	\$2,591.91	\$2,410.00
Pond River	\$575.00	\$900.00	\$1,048.81
Prospect Missionary	\$232.50	\$261.00	\$0.00
Providence First	\$6,786.12	\$7,587.98	\$2,200.70
Providence Second	\$5,353.00	\$5,739.00	\$2,070.00
Richland	\$1,741.00	\$3,228.00	\$225.00
Salem	\$18,778.99	\$9,748.88	\$5,175.60
Silent Run Missionary	\$4,770.75	\$5,266.81	\$11,732.82
Slaughters	\$14,023.69	\$15,505.00	\$4,681.87
Slover	\$1,543.53	\$1,997.75	\$1,215.00
Suthards Missionary	\$4,436.00	\$4,419.00	\$1,303.00
Victory	\$600.00	\$700.00	\$1,000.00
White Plains Missionary	\$2,130.35	\$3,682.71	\$731.00
Zion Brick Missionary	\$300.00	\$300.00	\$65.00
Subtotals	\$464,119.59	\$439,144.79	\$182,739.26

Little River Association

Bethany	\$2,555.49	\$3,209.00	\$972.87
Buffalo Lick	\$10,863.98	\$8,766.69	\$1,686.00
Cadiz	\$62,817.22	\$70,100.11	\$15,724.80
Cadiz Second	\$0.00	\$0.00	\$0.00
Caldwell Blue Spring	\$15,172.64	\$11,463.34	\$8,907.47
Canton	\$836.67	\$2,311.00	\$24,391.82
Cerulean	\$15,918.00	\$16,843.00	\$3,316.90
Delmont	\$4,628.06	\$4,113.04	\$322.00
Donaldson Creek	\$7,765.52	\$9,178.84	\$5,814.48
East Cadiz	\$17,918.61	\$19,260.43	\$5,450.69
Hurricane	\$12,298.90	\$10,841.46	\$19,170.46
Liberty Point	\$22,356.07	\$24,441.02	\$12,909.11
Locust Grove	\$7,847.18	\$9,033.78	\$4,950.68
Maple Grove	\$3,600.00	\$1,000.00	\$0.00
New Hope	\$7,698.82	\$10,607.88	\$4,234.26
New Jerusalem	\$0.00	\$0.00	\$0.00
New Light	\$150.00	\$600.00	\$800.00
Oak Grove	\$26,363.63	\$22,526.73	\$23,340.50
Ponderosa	\$6,784.17	\$9,489.43	\$3,507.00
Rock Front	\$150.00	\$0.00	\$0.00
Rocky Ridge	\$1,294.06	\$1,304.66	\$175.00
Rocky Ridge Missionary	\$0.00	\$103.81	\$0.00
Solid Rock	\$225.00	\$0.00	\$0.00
South Union	\$2,815.67	\$3,346.73	\$1,216.00
Trigg County	\$0.00	\$0.00	\$115.00
Wallonia	\$3,000.00	\$3,600.00	\$24,457.92
Subtotals	\$235,659.69	\$242,140.95	\$161,462.96

Logan Todd Association

Adairville	\$26,877.56	\$17,453.55	\$5,937.50
Antioch	\$7,304.41	\$6,942.64	\$2,396.85
Auburn	\$3,507.82	\$2,686.42	\$14,376.29
Beechland	\$2,342.91	\$2,371.15	\$1,760.18
Bellview	\$4,702.40	\$1,716.71	\$5,565.72
Britmart	\$3,009.16	\$3,900.90	\$2,343.00
Calvary	\$12,693.05	\$13,273.40	\$18,297.06
Cave Spring	\$5,951.65	\$6,634.95	\$0.00
Center	\$4,312.85	\$4,261.61	\$1,837.78
Concord	\$750.00	\$750.00	\$3,186.00

ASSOCIATION/ CHURCH	COP 2004-2005	COP 2005-2006	OTHER 2005-2006
Dripping Spring	\$32,772.32	\$32,889.41	\$6,011.20
Eastside	\$474.97	\$0.00	\$0.00
Elk Lick	\$20,150.71	\$20,100.00	\$9,920.00
Elkton	\$43,417.94	\$38,586.42	\$30,894.41
Epley	\$1,587.52	\$952.05	\$0.00
Forest Grove	\$6,336.74	\$6,728.99	\$3,347.19
Grace	\$6,554.75	\$4,565.00	\$40.00
Green Ridge	\$1,923.31	\$2,855.64	\$1,203.25
Guptons Grove	\$2,432.94	\$2,328.69	\$2,827.35
Guthrie	\$		

ASSOCIATION/ CHURCH	COP 2004-2005	COP 2005-2006	OTHER 2005-2006
Cornishville	\$2,100.00	\$2,528.75	\$774.69
Deep Creek	\$5,609.55	\$6,509.05	\$15,641.53
Dry Branch	\$0.00	\$0.00	\$90.00
Ellers Memorial	\$1,505.00	\$1,182.00	\$1,975.00
Fellowship	\$16,131.00	\$19,110.00	\$4,368.00
Harrodsburg	\$21,536.11	\$18,285.17	\$19,699.08
Hopewell	\$18,586.69	\$19,812.69	\$9,291.82
Kirkwood	\$4,951.51	\$6,914.63	\$3,231.00
Little Zion	\$200.00	\$300.00	\$0.00
Pioneer	\$6,333.00	\$6,458.00	\$5,019.02
Salvisa	\$23,192.41	\$28,246.93	\$13,629.00
Shakertown	\$1,920.00	\$1,920.00	\$670.00
Shawnee Run	\$12,870.37	\$13,890.59	\$3,553.28
Subtotals	\$256,818.39	\$264,808.25	\$145,098.55

Monroe Association

Akersville	\$1,022.98	\$1,029.17	\$200.00
Fountain Run First	\$12,557.81	\$42,164.83	\$5,788.22
Gamaliel	\$11,071.14	\$8,396.12	\$2,606.84
Indian Creek	\$7,021.00	\$6,945.00	\$2,331.13
Mill Creek	\$2,880.00	\$3,540.00	\$2,161.14
Milltown Chapel	\$0.00	\$0.00	\$100.00
Monroe	\$180.00	\$180.00	\$2,100.00
Oak Grove	\$0.00	\$1,299.00	\$914.00
Peters Creek	\$27,538.21	\$2,725.73	\$3,107.00
Rock Bridge	\$1,390.00	\$1,562.00	\$200.00
Temple Hill	\$9,747.00	\$8,023.00	\$31,412.00
Tompkinsville First	\$16,326.00	\$17,805.00	\$5,125.89
Subtotals	\$89,734.14	\$93,669.85	\$56,046.22

Muhlenberg County Association

Beech Creek	\$900.00	\$975.00	\$300.00
Beechmont	\$9,211.80	\$7,589.93	\$2,131.71
Bethlehem Church of Bremen	\$16,748.00	\$16,231.00	\$6,279.05
Browder	\$895.78	\$777.57	\$2,532.72
Calvary	\$4,140.18	\$2,854.13	\$1,453.00
Carver Creek	\$9,000.00	\$9,000.00	\$25,414.21
Cave Springs	\$0.00	\$0.00	\$0.00
Cedar Grove	\$2,400.00	\$2,200.00	\$2,592.55
Central City First	\$108,672.96	\$107,154.26	\$21,214.95
Cherry Hill	\$10,210.41	\$9,910.96	\$3,098.88
Dunnot	\$15,928.41	\$13,996.37	\$6,750.61
East Union	\$13,359.34	\$14,804.31	\$3,827.00
Ebenezer	\$350.00	\$7,472.00	\$3,733.00
Ebenezer	\$0.00	\$0.00	\$0.00
Forest Grove	\$0.00	\$0.00	\$0.00
Forest Oak	\$4,270.37	\$4,126.67	\$1,158.00
Friendship	\$3,818.75	\$3,000.00	\$643.00
Graham	\$4,207.00	\$4,852.00	\$857.60
Greenville First	\$28,851.04	\$23,592.04	\$9,869.96
Hazel Creek	\$12,129.00	\$12,580.00	\$1,416.89
Macedonia	\$1,135.65	\$994.39	\$1,265.00
Martwick	\$500.00	\$500.00	\$1,310.00
Mercer	\$900.00	\$1,700.00	\$1,577.00
Mount Pisgah	\$16,253.93	\$12,634.59	\$9,859.75
Nelson Creek	\$5,917.78	\$6,634.30	\$1,000.00
New Cypress	\$1,150.00	\$1,100.00	\$1,500.00
New Harmony	\$19,010.00	\$19,888.00	\$3,833.00
New Hebron	\$346.98	\$75.00	\$0.00
New Hope	\$3,323.29	\$3,526.04	\$2,649.50
New Paradise	\$1,200.00	\$1,200.00	\$0.00
New Prospect	\$1,500.00	\$1,500.00	\$640.00
Oak Grove	\$5,655.33	\$4,676.34	\$655.12
Penrod	\$7,252.25	\$6,155.73	\$3,077.90
Pleasant Hill	\$221.89	\$0.00	\$1,497.83
Powderly	\$1,700.00	\$1,971.50	\$1,605.63
Riverside Missionary	\$0.00	\$0.00	\$0.00
Roland Memorial	\$20,900.08	\$10,700.40	\$3,537.58
South Carrollton	\$6,627.34	\$8,599.95	\$0.00
Temple	\$11,915.00	\$12,208.59	\$7,891.00
Unity	\$600.00	\$600.00	\$840.50
Vernal Grove	\$5,940.75	\$6,361.94	\$74.38
Woodland	\$20,462.00	\$22,465.00	\$8,300.95
Woodson	\$8,979.02	\$8,466.47	\$1,420.56
Subtotals	\$386,584.33	\$373,074.48	\$145,808.83

Nelson Association

Bardstown	\$18,082.47	\$14,999.31	\$8,019.70
Bardstown Junction	\$12,676.00	\$11,353.00	\$4,803.80
Beech Grove	\$0.00	\$0.00	\$0.00
Belmont	\$388.00	\$277.36	\$508.00
Bethany	\$2,410.56	\$3,178.12	\$1,243.00
Bloomfield	\$37,221.44	\$41,864.27	\$12,777.51
Bullitt Lick	\$29,035.44	\$29,639.94	\$3,469.00
Cedar Grove	\$1,090.78	\$930.16	\$7,996.00
Chaplin	\$27,248.43	\$30,363.55	\$7,507.56
Chaplin Fork	\$3,475.32	\$1,401.91	\$530.00
Clermont	\$1,592.00	\$2,096.00	\$25.00
Coxs Creek	\$7,684.92	\$6,091.64	\$1,166.00
Eagle Heights	\$1,800.00	\$1,800.00	\$1,036.42
Eastside	\$2,318.36	\$1,862.39	\$0.00
First Cedar Creek	\$11,069.23	\$7,836.86	\$3,087.87
Hobbs	\$0.00	\$0.00	\$0.00
Immanuel	\$1,735.38	\$1,613.00	\$1,233.00
Lebanon Junction First	\$11,549.18	\$13,837.14	\$16,641.60
Little Union	\$6,150.04	\$7,499.10	\$1,047.00
Mill Creek	\$11,232.00	\$7,703.00	\$3,402.52
Mount Carmel	\$5,848.87	\$6,316.37	\$945.00
Mount Eden	\$2,806.12	\$2,844.44	\$1,537.46
Mount Moriah	\$3,246.79	\$3,498.50	\$1,630.50
Mount Washington First	\$75,226.15	\$84,588.83	\$50,359.19
New Beginning	\$852.32	\$800.00	\$2,563.34
New Haven First	\$200.00	\$0.00	\$0.00
New Salem	\$15,130.37	\$20,869.88	\$4,591.48
Parkway	\$13,250.00	\$20,026.80	\$14,403.20
People's Church of Central Ky	\$1,145.80	\$1,146.99	\$0.00
Pleasant Grove	\$3,298.93	\$2,385.54	\$16,099.12
River View	\$10,226.31	\$11,518.90	\$2,664.00
Rolling Fork	\$1,757.00	\$0.00	\$0.00
Shepherdsville First	\$2,903.23	\$3,354.07	\$5,045.09
Sites Station	\$0.00	\$0.00	\$0.00
Trinity	\$130.00	\$163.00	\$0.00
Victory	\$7,248.88	\$8,003.43	\$4,140.01
Vine Hill	\$13,954.00	\$15,717.00	\$3,051.00
Wakefield	\$468.37	\$442.31	\$116.00
Wickland	\$8,513.66	\$10,428.85	\$3,008.20
Subtotals	\$352,966.35	\$376,451.66	\$184,647.57

Northern Ky Association

Anchor	\$4,239.25	\$3,963.25	\$890.00
Ashland Avenue	\$11,221.08	\$10,021.65	\$3,901.00
Beaver Lick	\$2,000.00	\$1,993.98	\$1,805.46
Beechgrove	\$3,665.00	\$4,648.00	\$25.00
Bellevue	\$23,585.00	\$25,451.00	\$4,455.00
Bellevue First	\$9,547.99	\$9,549.64	\$3,410.89
Bethesda	\$200.00	\$2,400.00	\$908.80
Big Bone	\$31,027.00	\$32,649.64	\$20,379.12
Brooksville	\$1,595.74	\$2,136.10	\$2,963.01
Bullittsburg	\$14,431.41	\$10,580.67	\$835.00
Burlington	\$88,026.59	\$77,918.40	\$14,807.08
Church at the Garden of Hope	\$0.00	\$0.00	\$0.00
Cold Spring First	\$28,348.07	\$14,208.41	\$5,584.06
Cornerstone	\$2,840.00	\$0.00	\$0.00
Covington First	\$2,942.54	\$3,131.13	\$1,839.00
Covington First (Ninth Street)	\$792.00	\$528.00	\$0.00
Crecent Springs	\$11,579.00	\$7,243.55	\$2,777.13
Dayton First	\$2,953.03	\$3,198.52	\$1,453.05
Decoursey	\$3,055.00	\$8,043.97	\$2,176.00
East Dayton	\$600.00	\$600.00	\$2,180.33
Elsmere	\$7,019.52	\$8,775.78	\$2,292.15
Erlanger	\$30,454.47	\$40,237.60	\$33,111.17
Erlanger Deaf Mission	\$700.00	\$630.00	\$217.00
Fairlane	\$10,727.73	\$11,334.64	\$975.50
First Twelve Mile	\$10,900.36	\$12,187.47	\$1,465.96
Flag Spring	\$200.00	\$325.00	\$521.00
Florence	\$11,820.50	\$13,546.00	\$150,321.28
Fort Mitchell	\$26,770.97	\$22,671.34	\$3,652.00
Fort Thomas First	\$5,272.87	\$1,251.43	\$4,860.20
Grace	\$8,589.43	\$10,014.20	\$4,566.61
Grace Dry Ridge	\$0.00	\$0.00	\$0.00
Grants Lick	\$20,273.70	\$20,835.12	\$6,571.04
Greenview	\$18,444.46	\$18,451.59	\$6,003.87
Hebron	\$25,612.23	\$26,959.77	\$10,730.65
Hickory Grove	\$47,367.42	\$46,788.54	\$6,052.94
Highland Avenue	\$500.00	\$760.00	\$0.00
Highland Heights First	\$19,137.69	\$16,833.64	\$3,088.31
Highland Hills	\$20,999.54	\$14,083.19	\$4,576.27
Kento-Boo	\$1,875.00	\$2,500.00	\$545.00
Kenon	\$6,890.16	\$7,729.75	\$2,870.42
Latonia	\$10,485.58	\$7,124.48	\$4,847.37
Licking Valley	\$3,824.38	\$4,528.56	\$1,320.00
Ludlow First	\$9,199.46	\$1,150.00	\$4,103.69
Macedonia Missionary	\$0.00	\$0.00	\$0.00
Madison Avenue	\$800.00	\$1,250.00	\$3,760.00
Main Street	\$12,151.09	\$0.00	\$37,270.76
Mentor	\$3,575.00	\$3,656.00	\$1,136.00
New Banklick	\$10,773.75	\$10,466.82	\$120.00
Newport First	\$0.00	\$5,397.00	\$650.00
Ninth Street	\$0.00	\$2,000.00	\$0.00
Oak Island	\$1,614.74	\$1,568.15	\$1,292.85
Oak Ridge	\$39,004.46	\$40,533.87	\$10,143.83
Oakland Avenue	\$1,977.50	\$1,708.93	\$150.00
Persimmon Grove	\$2,000.00	\$1,000.00	\$1,708.00
Petersburg	\$1,347.95	\$1,837.03	\$603.00
Piner	\$3,264.99	\$3,996.00	\$1,082.00
Pleasant Ridge	\$13,300.32	\$12,611.78	\$3,545.58
Rosedale	\$1,641.26	\$2,835.01	\$885.00
Sand Run	\$17,432.83	\$10,127.62	\$3,264.50
Second Twelve Mile	\$9,376.33	\$8,036.64	\$1,793.50
Silver Grove First	\$1,354.23	\$1,114.79	\$905.15
South Side	\$3,059.06	\$2,469.37	\$1,839.32
Trinity	\$3,313.00	\$0.00	\$297.00
Union	\$27,551.00	\$29,880.07	\$5,822.00
United in Christ	\$0.00	\$0.00	\$0.00
Visalia	\$705.96	\$732.00	\$125.00
Walton First	\$26,805.68	\$27,512.78	\$5,045.54
West Covington	\$2,400.00	\$2,400.00	\$2,650.00
Wilmington	\$7,600.10	\$8,329.39	\$1,766.00
Woodhaven	\$466.00	\$0.00	\$1,255.00
Subtotals	\$730,829.39	\$686,447.26	\$409,892.39

Ohio County Association

Adaburg	\$426.75	\$558.67	\$100.00
Barnett Creek	\$2,292.81	\$3,797.96	\$0.00
Beaver Dam	\$98,094.18	\$101,656.19	\$17,874.38
Bells Run	\$7,872.00	\$8,229.00	\$3,674.05
Centertown	\$4,654.71	\$4,704.37	\$4,930.87
Central Grove	\$0.00	\$0.00	\$0.00
Clear Run	\$3,370.76	\$2,803.86	\$1,085.00
Concord	\$8,212.05	\$10,012.84	\$1,286.77
Cool Springs	\$398.23	\$484.76	\$5,727.52
Deaneville	\$2,040.82	\$1,905.19	\$1,172.75
Dundee	\$540.00	\$540.00	\$90.00
East Fork	\$1,200.45	\$1,074.22	\$782.13
East Hartford	\$2,697.27	\$601.79	\$0.00
Fairview	\$2,498.00	\$2,534.50	\$0.00
Fordsville	\$12,869.78	\$11,541.10	\$5,824.00
Green River	\$9,228.07	\$6,577.80	\$1,781.00
Hartford	\$23,523.59	\$23,849.49	\$6,805.35
Hartford Second	\$3,316.75	\$3,317.33	\$373.00
Independence	\$1,989.53	\$2,704.55	\$2,504.69
McGrady Creek	\$0.00	\$0.00	\$100.00
McHenry	\$16,338.00	\$17,662.00	\$2,512.29
Mount Carmel	\$18,246.24	\$20,221.82	\$16,147.35
Mount Zion	\$550.00	\$300.00	\$0.00
Narrows	\$0.00	\$0.00	\$0.00
New Panther Creek	\$1,256.51	\$1,284.72	\$1,388.59
New Zion	\$0.00	\$0.00	\$463.00
Olaton	\$792.40	\$931.90	\$115.00
Pleasant Hill	\$3,661.60	\$2,135.42	\$938.01
Pleasant Grove	\$2,313.68	\$2,484.80	\$344.55
Pond Run	\$3,803.25	\$3,208.50	\$322.00
Providence	\$5,226.32	\$4,948.06	\$1,809.73
Ridgecrest	\$4,469.60	\$5,139.44	\$1,993.13
Rockport	\$2,073.96	\$2,032.44	\$310.00
Rosine	\$0.00	\$0.00	\$0.00
Slaty Creek	\$2,170.30	\$3,120.18	\$854.00
Smallhouse	\$965.79	\$1,102.65	\$200.00
Waltons Creek	\$1,116.92	\$1,554.06	\$547.93
West Point	\$121.01	\$84.89	\$2,399.96
West Providence	\$2,710.26	\$2,470.61	\$1,000.00
Woodwards Valley	\$1,734.00	\$795.00	\$500.00
Zion	\$4,138.72	\$4,175.82	\$585.00
Subtotals	\$256,914.31	\$260,545.93	\$85,292.05

Ohio River Association

Baker	\$906.00	\$813.00	\$50.00
Birdsville	\$1,875.68	\$1,571.87	\$163.00
Caldwell Springs	\$3,953.30	\$3,604.53	\$1,427.50
Calvary	\$4,742.09	\$2,971.69	\$1,783.01
Carsville	\$0.00	\$0.00	\$0.00
Cave Springs	\$220.00	\$226.00	\$100.00
Central	\$274.99	\$207.67	\$150.00
Corinth	\$650.00	\$600.00	\$330.00
Crooked Creek	\$1,824.54	\$1,906.82	\$250.00
Deer Creek	\$10,021.63	\$9,659.94	\$2,649.45
Dunn Springs	\$0.00	\$0.00	\$0.00
Dycusburg	\$4,561.67	\$5,578.52	\$1,

ASSOCIATION/ CHURCH	COP 2004-2005	COP 2005-2006	Other 2005-2006
Friendship	\$4,801.67	\$5,339.03	\$3,772.18
Indian Hill	\$407.89	\$596.19	\$576.00
Jamestown First	\$16,130.62	\$15,180.96	\$3,216.91
Liberty	\$8,974.86	\$13,666.49	\$7,687.12
Mount Olive	\$0.00	\$572.90	\$3,904.98
Mount Vernon	\$6,702.12	\$4,982.39	\$2,412.92
New Victory	\$1,755.60	\$1,557.19	\$0.00
Poplar Grove	\$3,317.06	\$2,839.00	\$0.00
Providence	\$0.00	\$0.00	\$0.00
Russell Springs First	\$49,414.12	\$51,511.88	\$17,944.55
Welfare	\$3,839.75	\$5,023.86	\$1,652.35
Windser First	\$0.00	\$0.00	\$0.00
Subtotals	\$103,084.68	\$112,634.72	\$59,573.74

Russell Creek Association

Beech Grove	\$8,687.44	\$9,215.99	\$2,415.00
Bethany	\$1,406.25	\$1,296.78	\$13.00
Bethlehem	\$11,319.00	\$11,485.20	\$2,700.00
Brush Creek	\$200.00	\$200.00	\$1,000.00
Cane Valley	\$2,136.83	\$2,187.26	\$25,161.70
Charity	\$1,399.03	\$1,002.88	\$934.00
Columbia	\$34,375.34	\$38,262.51	\$9,964.94
Fry	\$540.00	\$540.00	\$0.00
Greasy Creek	\$8,142.68	\$10,806.18	\$5,459.41
Green Hill	\$1,317.40	\$1,828.95	\$853.00
Greensburg	\$30,515.43	\$31,240.90	\$6,000.00
Harrods Fork	\$100.00	\$100.00	\$136.00
Macedonia	\$3,014.00	\$2,802.00	\$0.00
Mount Gilead	\$2,660.00	\$4,044.48	\$65.00
New Hope	\$0.00	\$0.00	\$600.00
New Salem	\$4,146.61	\$5,093.38	\$1,804.38
Pierces Chapel	\$348.86	\$255.00	\$450.00
Pink Ridge	\$0.00	\$0.00	\$0.00
Pleasant Ridge	\$776.37	\$608.41	\$0.00
Pleasant Valley	\$300.00	\$300.00	\$220.00
Plum Point	\$3,631.75	\$3,336.31	\$0.00
Russell Heights	\$69.00	\$0.00	\$536.81
South Greensburg	\$50.00	\$0.00	\$0.00
Sparksville	\$300.00	\$500.00	\$250.00
Sulphur Springs	\$0.00	\$0.00	\$0.00
Summersville	\$7,942.00	\$10,526.04	\$8,374.90
Trammell Creek	\$10,372.09	\$10,857.11	\$5,000.00
Subtotals	\$133,750.08	\$146,489.38	\$72,028.14

Salem Association

Big Spring	\$435.84	\$0.00	\$0.00
Blue River Island	\$2,624.71	\$2,115.83	\$0.00
Brandenburg First	\$23,795.08	\$22,922.15	\$8,131.00
Buck Grove	\$27,118.25	\$26,437.00	\$13,392.92
Cold Spring	\$480.00	\$480.00	\$2,059.00
Ekron	\$15,424.65	\$12,101.80	\$7,658.11
Guston	\$500.00	\$1,000.00	\$192.00
Hill Grove	\$7,920.16	\$6,830.05	\$4,061.49
Irvington	\$2,000.00	\$1,100.00	\$715.00
Muldrough	\$16,475.44	\$18,776.14	\$2,007.21
New Brandenburg	\$1,020.00	\$1,020.00	\$1,016.00
New Highland	\$1,489.00	\$1,147.00	\$933.00
New Salem	\$7,341.18	\$7,154.16	\$1,899.62
Payneville	\$1,815.33	\$1,041.69	\$7,206.02
Raymond	\$8,968.11	\$7,997.06	\$1,723.12
Rock Haven	\$9,617.94	\$10,504.66	\$1,693.25
Salem	\$5,352.22	\$5,187.70	\$2,665.86
West Point	\$2,132.46	\$2,076.56	\$281.22
Wolf Creek	\$1,439.74	\$1,759.03	\$2,935.09
Subtotals	\$135,950.11	\$129,650.83	\$58,569.91

Sewers Valley Association

Agape Missionary	\$0.00	\$0.00	\$0.00
Athertonville	\$0.00	\$200.00	\$125.00
Barren Run	\$3,539.15	\$3,053.41	\$2,054.00
Berean	\$7,009.65	\$7,983.44	\$4,152.31
Blue Ball	\$1,873.26	\$2,333.32	\$945.40
Buffalo	\$14,619.00	\$16,436.00	\$9,385.00
Calvary	\$0.00	\$0.00	\$0.00
Cecilia	\$52,142.23	\$30,765.52	\$13,499.35
Central Avenue	\$496.45	\$11,675.84	\$2,494.82
Colesburg	\$0.00	\$0.00	\$1,779.70
East View	\$385.35	\$333.04	\$337.61
Elizabethtown	\$18,916.00	\$19,104.00	\$7,686.00
First Korean	\$9,723.62	\$9,799.80	\$3,601.00
Franklin Crossroads	\$46,768.98	\$53,415.60	\$10,583.92
Gilead	\$26,757.67	\$30,419.85	\$5,705.95
Harvest	\$1,148.41	\$1,148.00	\$1,361.70
Heavenbound	\$622.71	\$960.98	\$1,693.00
Hodgenville First	\$21,300.09	\$23,272.32	\$15,267.21
Immanuel	\$46,852.96	\$49,977.93	\$8,172.65
Locust Grove	\$2,675.26	\$1,300.00	\$874.67
Magnolia	\$11,310.20	\$7,708.08	\$5,145.00
Middle Creek	\$3,553.77	\$2,852.12	\$515.00
Mill Creek	\$20,292.83	\$22,180.42	\$6,300.85
Mount Zion	\$13,987.24	\$18,101.68	\$11,878.52
New Fellowship	\$389.00	\$432.91	\$400.00
New Hope	\$3,000.00	\$3,000.00	\$4,200.00
New Hope Missionary	\$5,050.68	\$6,278.24	\$0.00
New Horizon	\$11,769.13	\$14,274.50	\$3,666.26
New Life	\$2,700.00	\$3,000.00	\$1,549.00
Nolynn	\$2,861.37	\$3,136.68	\$2,602.00
Northside	\$46,734.21	\$71,109.02	\$35,120.20
Ovesen Heights	\$6,334.32	\$6,938.06	\$865.59
Parkway	\$6,456.51	\$5,699.49	\$1,460.00
Pleasant Grove	\$5,288.12	\$3,386.13	\$2,079.46
Red Hill	\$5,877.33	\$5,697.15	\$4,215.64
Revelation Missionary	\$0.00	\$0.00	\$0.00
Rincynville	\$20,343.67	\$26,417.02	\$9,175.61
Round Top	\$4,227.25	\$4,948.14	\$1,591.00
Sewers Valley	\$227,083.45	\$252,333.46	\$106,633.15
Sonora First	\$10,759.98	\$13,205.84	\$28,884.28
Stithon	\$38,726.15	\$35,995.41	\$8,027.81
Tunnel Hill	\$17,990.92	\$12,516.35	\$1,285.77
Unity	\$1,727.70	\$2,094.28	\$1,334.52
Valley Creek	\$56,615.41	\$54,501.83	\$12,515.29
Valley View	\$16,286.00	\$30,550.00	\$11,279.59
Vertrees	\$867.43	\$667.21	\$0.00
Vine Grove	\$525.00	\$675.00	\$0.00
White Mills	\$3,950.00	\$4,200.00	\$1,803.00
Youngers Creek	\$27,084.02	\$29,033.08	\$8,735.66
Subtotals	\$826,622.48	\$903,111.15	\$360,982.49

Shelby Association

Alpha Y Omega	\$0.00	\$0.00	\$453.00
Bagdad	\$380.40	\$0.00	\$5,887.62
Beechridge	\$1,232.87	\$1,011.81	\$15,038.25
Bethlehem	\$3,374.53	\$1,856.87	\$3,887.28
Buffalo Lick	\$4,608.19	\$4,253.09	\$1,177.00
Burks Branch	\$0.00	\$23,900.45	\$16,697.21
Christiansburg	\$7,927.30	\$7,007.89	\$20,482.12
Clayvillage	\$5,327.96	\$5,622.72	\$4,891.45
Cropper	\$10,697.00	\$11,771.30	\$3,802.00
Cropper	\$7,906.89	\$8,232.67	\$3,946.00
Elmberg	\$525.00	\$525.00	\$1,384.18
Emmanuel	\$3,162.62	\$3,848.03	\$1,019.00
Finchville	\$5,320.00	\$5,320.00	\$2,084.00
Graefenburg	\$45,612.90	\$45,513.82	\$30,542.80
Hempbridge	\$3,538.51	\$3,819.79	\$2,373.18
Highland	\$50,777.78	\$46,440.32	\$8,264.67
Indian Fork	\$300.00	\$300.00	\$1,275.00
Little Mount	\$0.00	\$0.00	\$5,447.09
Mount Moriah	\$7,716.00	\$7,733.00	\$1,980.00
Mount Pleasant	\$3,298.19	\$4,012.95	\$1,820.00
Mount Vernon	\$3,007.24	\$2,790.38	\$1,100.00
New Life	\$0.00	\$0.00	\$500.00
Pigeon Fork	\$8,351.98	\$7,200.00	\$5,935.37
Salem	\$18,794.34	\$20,424.73	\$7,776.05
Shelbyville First	\$121,569.27	\$105,756.88	\$22,539.18
Simpsonville	\$54,142.59	\$54,045.02	\$6,031.81
Victory	\$7,364.89	\$9,667.88	\$295.15
Waddy	\$8,064.29	\$8,031.94	\$5,352.50
Subtotals	\$383,000.74	\$389,086.54	\$181,981.91

Simpson Association

Barbe	\$3,333.34	\$1,833.33	\$145.00
Blackjack	\$9,746.10	\$14,819.20	\$2,250.24
Calvary	\$5,200.00	\$7,166.62	\$5,722.41
Cedar Grove	\$2,793.52	\$2,252.00	\$567.85
Fairview	\$658.07	\$1,124.82	\$3,121.94
Franklin First	\$42,573.39	\$40,454.00	\$25,079.23
Lake Spring	\$11,689.38	\$11,126.49	\$2,702.25
New Hope	\$5,044.00	\$4,064.00	\$1,802.00
Providence	\$0.00	\$2,200.00	\$0.00
Shady Grove	\$0.00	\$0.00	\$3,000.00
Sulphur Spring	\$15,000.00	\$13,750.00	\$18,982.82
Trinity	\$933.00	\$1,477.00	\$361.00
Subtotals	\$96,970.80	\$100,267.46	\$63,734.74

South District Association

Beech Fork	\$2,115.09	\$2,712.16	\$426.00
Beech Grove	\$5,040.00	\$3,960.00	\$3,172.00
Calvary	\$33,370.22	\$32,491.59	\$15,170.35
Community	\$0.00	\$0.00	\$0.00
Danville Deaf Mission	\$260.00	\$260.00	\$0.00
Danville First	\$27,500.00	\$12,895.67	\$14,669.29
Doctors Fork	\$6,635.83	\$8,918.48	\$4,027.00
Friends	\$240.00	\$260.00	\$1,540.00
Gethsemane	\$32,983.38	\$36,276.16	\$9,686.09
Gravel Switch	\$2,894.34	\$3,600.45	\$380.00
Hedgeville	\$19,972.00	\$19,599.00	\$7,770.00
Hyattsville	\$24,896.17	\$27,420.67	\$3,435.47
Junction City First	\$16,958.00	\$21,103.00	\$5,174.62
Lancaster	\$90,278.33	\$64,251.08	\$8,704.97
Lancaster Hispanic Mission	\$0.00	\$0.00	\$5,201.20
Mitchellsburg	\$3,851.00	\$3,463.72	\$1,159.00
North Rolling Fork	\$2,068.64	\$1,410.32	\$4,673.00
Parksville	\$5,399.54	\$5,761.22	\$3,201.45
Perryville	\$28,341.23	\$28,716.65	\$5,817.54
Pleasant Hill	\$314.56	\$896.76	\$0.00
Pleasant Run	\$0.00	\$0.00	\$0.00
Salt River	\$3,184.64	\$1,171.26	\$5,893.06
So District Hispanic Ministries	\$0.00	\$0.00	\$0.00
Southern Heights	\$148.00	\$0.00	\$0.00
Willow Grove	\$21,240.75	\$20,934.59	\$14,711.59
Subtotals	\$287,691.72	\$296,062.78	\$114,812.63

South Union-Mount Zion Association

Alsie	\$0.00	\$0.00	\$0.00
Antioch	\$673.47	\$784.85	\$0.00
Bacon Creek	\$0.00	\$0.00	\$1,000.00
Bethlehem	\$1,428.88	\$2,140.00	\$987.00
Big Cane Creek	\$0.00	\$0.00	\$0.00
Buffalo	\$100.00	\$0.00	\$4,500.00
Calvary	\$600.00	\$600.00	\$0.00
Cane Gap Missionary	\$0.00	\$0.00	\$0.00
Cedar Gap	\$0.00	\$0.00	\$4,697.89
Central	\$160,970.87	\$167,287.03	\$31,863.82
Chapel Grove	\$1,100.00	\$1,200.00	\$0.00
Clay Hill	\$50.00	\$50.00	\$0.00
Corinth	\$2,260.47	\$3,198.70	\$725.00
Corn Creek	\$993.33	\$833.53	\$0.00
Faber	\$4,716.12	\$4,578.21	\$590.00
Fairview	\$200.00	\$200.00	\$200.00
Faith	\$2,841.52	\$3,744.38	\$1,359.61
Flat Creek	\$0.00	\$0.00	\$0.00
Frankfort	\$1,200.00	\$1,200.00	\$1,111.00
Goldbug	\$0.00	\$0.00	\$0.00
Good Hope	\$4,408.00	\$4,598.00	\$0.00
Greenland	\$4,464.25	\$4,477.43	\$2,442.13
Hopewell	\$12,900.00	\$48,050.00	\$6,867.35
Immanuel	\$53,838.44	\$34,124.28	\$5,856.87
Indian Gap	\$0.00	\$0.00	\$0.00
Jellico Creek	\$0.00	\$0.00	\$0.00
Kentucky Hill	\$0.00	\$0.00	\$0.00
Level Green	\$0.00	\$0.00	\$0.00
Main Street	\$52,268.06	\$45,642.54	\$14,179.04
Meadow Creek	\$0.00	\$0.00	\$0.00
Mount Gap	\$0.00	\$0.00	\$0.00
Mossy Pisgah	\$0.00	\$0.00	\$0.00
Mountain Ash	\$2,031.50	\$675.20	\$511.59
New Mount Zion	\$0.00	\$61.36	\$0.00
Oak Grove	\$600.00	\$1,200.00	\$0.00
Oswego	\$600.00	\$600.00	\$688.00
Park Hill	\$2,646.29	\$3,500.85	\$483.00
Patterson Creek	\$0.00	\$0.00	\$0.00
Piney Grove	\$0.00	\$0.00	\$0.00
Pleasant Grove	\$2,718.68	\$2,471.56	\$1,488.63
Pleasant Hill	\$0.00	\$0.00	\$0.00
Pleasant View	\$987.81	\$1,310.53	\$443.68
Red Bird	\$475.00	\$500.00	\$0.00

ASSOCIATION/ CHURCH	COP 2004-2005	COP 2005-2006	Other 2005-2006
Rockholds First	\$0.00	\$0.00	\$0.00
Ryans Creek	\$0.00	\$0.00	\$0.00
Southside	\$0.00	\$0.00	\$0.00
Tannery Hollow	\$780.00	\$720.00	\$343.00
Twentieth Street	\$902.00	\$852.00	\$0.00
Watsons Chapel	\$0.00	\$0.00	\$0.00
West Corbin	\$12,917.00	\$0.00	\$3,297.77
White Oak Missionary	\$0.00	\$643.23	\$0.00
Wofford	\$890.56	\$0.00	\$0.00
Wolf Creek	\$895.00	\$1,561.00	\$120.00
Woodbine Missionary	\$0.00	\$0.00	\$0.00
Subtotals	\$331,457.25	\$336,804.68	\$68,140.14

Oldham-Trimble Association

Antioch	\$0.00	\$0.00	\$1,025.00
Ballardsville	\$9,294.14	\$11,176.92	\$43,685.27
Bedford	\$22,333.32	\$22,833	

ASSOCIATION/ CHURCH	COP 2004-2005	COP 2005-2006	OTHER 2005-2006
Willow Grove	\$0.00	\$0.00	\$0.00
Yocum Creek	\$1,213.74	\$1,018.28	\$0.00
Subtotals	\$114,524.36	\$118,733.63	\$69,789.89
Warren Association			
Andrew	\$550.00	\$650.00	\$1,407.00
Barren River	\$2,778.90	\$2,880.00	\$5,679.00
Bethany	\$8,405.57	\$9,214.75	\$4,100.00
Bowling Green First	\$31,915.00	\$34,000.00	\$72,277.32
Brownsville Missionary	\$1,450.00	\$9,686.00	\$23,039.03
Burton Memorial	\$7,314.01	\$7,058.34	\$2,843.81
Calvary	\$3,600.00	\$3,600.00	\$1,835.00
Cedar Bluff	\$210.44	\$190.24	\$0.00
Clear Fork	\$10,308.67	\$11,317.90	\$3,176.00
Covenant Ministries	\$0.00	\$2,000.00	\$0.00
Crossroads - The Church at Logan	\$1,200.00	\$0.00	\$0.00
Dedicated	\$504.00	\$462.00	\$520.00
Eastwood	\$137,334.74	\$166,126.03	\$77,805.50
Emmanuel Chapel	\$0.00	\$0.00	\$0.00
Faith	\$835.14	\$893.17	\$100.00
Forest Park	\$17,000.97	\$17,467.49	\$11,267.91
Friendship	\$4,070.74	\$4,240.56	\$7,350.00
Glen Lily	\$1,327.23	\$1,018.81	\$2,578.01
Glendale	\$2,400.00	\$2,200.00	\$5,372.17
Greenwood	\$25,553.11	\$25,018.77	\$9,457.80
Halls Chapel	\$0.00	\$0.00	\$0.00
Highland	\$1,169.39	\$1,486.51	\$2,902.00
Hillview	\$0.00	\$400.00	\$0.00
Hillvue Heights	\$28,166.71	\$80,004.00	\$0.00
Iva	\$200.00	\$200.00	\$0.00
Jackson Grove	\$325.00	\$90.00	\$206.00
Lawrence Chapel	\$0.00	\$0.00	\$0.00
Living Hope	\$434,824.12	\$407,938.76	\$78,778.39
Martinsville	\$0.00	\$0.00	\$0.00
Meadow Land	\$5,256.09	\$6,047.26	\$0.00
New Gasper	\$825.00	\$675.00	\$980.00
Oak Forest	\$109.38	\$0.00	\$0.00
Oak Forest	\$8,098.46	\$8,877.59	\$6,377.00
Oakland	\$38,875.35	\$32,586.72	\$4,915.33
Plano	\$5,495.59	\$4,528.35	\$961.50
Pleasant Grove	\$808.64	\$0.00	\$0.00
Providence Knob	\$5,096.85	\$5,860.68	\$1,153.00
Rich Pond	\$122,879.66	\$116,409.23	\$45,379.97
Richardsville	\$2,761.74	\$2,489.34	\$4,926.00
Riverview Missionary	\$0.00	\$0.00	\$0.00
Rocky Springs	\$4,630.85	\$4,779.27	\$1,477.40
Scottsville Road	\$0.00	\$0.00	\$0.00
Smiths Grove	\$11,500.00	\$11,499.86	\$4,545.50
Southside	\$6,018.42	\$5,449.23	\$944.00
State Street	\$1,050.00	\$350.00	\$0.00
White Stone Quarry	\$1,811.00	\$990.00	\$4,685.98
Woodburn	\$26,019.13	\$31,821.48	\$10,983.00
Subtotals	\$962,779.90	\$1,020,507.34	\$398,023.62
Wayne County Association			
Big Sinking	\$780.20	\$0.00	\$1,066.28
Concord	\$600.00	\$600.00	\$0.00
Cooper	\$1,816.68	\$1,619.97	\$1,347.00
Elk Spring Valley	\$6,986.63	\$3,050.55	\$2,078.00
Green Hill	\$0.00	\$0.00	\$0.00
Immanuel	\$0.00	\$0.00	\$0.00
Lower Turkey Creek	\$0.00	\$0.00	\$0.00
Meadow Creek	\$0.00	\$0.00	\$0.00
Missouri Hollow	\$0.00	\$0.00	\$0.00
Monticello First	\$24,000.00	\$26,400.00	\$46,688.93
Mount Zion	\$3,660.00	\$4,030.00	\$2,720.00
New Charity	\$450.00	\$531.24	\$1,353.76
New Salem	\$2,848.50	\$2,132.00	\$3,325.00
Newtown	\$859.78	\$1,036.58	\$200.00
Oak Grove	\$2,748.48	\$2,802.12	\$4,713.12
Parmleys Grove	\$0.00	\$0.00	\$0.00
Rectors Flat	\$4,483.00	\$2,418.00	\$894.87
Rogers Grove	\$0.00	\$0.00	\$0.00
Sandusky Chapel	\$1,200.00	\$1,680.00	\$0.00
South Main Missionary	\$100.00	\$200.00	\$200.00
Spann Hill	\$948.96	\$985.95	\$1,428.25
Stuebenville	\$18,125.87	\$18,957.78	\$2,759.01
Subtotals	\$69,608.10	\$66,444.19	\$68,774.22
West Kentucky Association			
Antioch	\$1,679.70	\$1,475.50	\$0.00
Arlington First	\$6,996.00	\$6,996.00	\$25,641.40
Bardwell	\$30,954.55	\$30,187.35	\$9,122.80
Bethlehem	\$12,000.00	\$13,400.00	\$2,798.33
Beulah	\$18,951.83	\$18,030.44	\$2,742.00
Burkley	\$610.00	\$600.00	\$170.00
Cayce	\$2,150.00	\$3,000.00	\$1,442.61
Clinton First	\$31,818.06	\$30,000.00	\$12,148.48
Clinton Second	\$3,179.00	\$2,313.00	\$5,701.00
Columbus	\$5,016.61	\$6,601.04	\$1,698.18
Crutchfield	\$3,115.48	\$3,035.26	\$675.53
Davids Chapel	\$1,710.00	\$0.00	\$0.00
East Hickman	\$655.00	\$794.00	\$1,588.00
Fulton First	\$87,339.61	\$22,947.39	\$8,665.78
Green Valley Missionary	\$0.00	\$0.00	\$0.00
Hickman First	\$1,575.00	\$1,969.28	\$0.00
Hopewell	\$156.07	\$171.74	\$371.22
Kirbyton	\$3,190.13	\$2,489.15	\$3,651.63
Liberty	\$3,000.00	\$3,000.00	\$1,600.28
Milburn First	\$7,151.17	\$8,773.60	\$2,596.00
Mississippi	\$15,650.80	\$14,417.00	\$5,974.00
Moscow	\$4,381.75	\$5,072.58	\$4,150.00
Mount Carmel	\$3,600.00	\$3,600.00	\$4,545.95
Mount Moriah	\$0.00	\$0.00	\$2,767.90
New Bethel	\$2,572.00	\$1,754.00	\$677.41
New Harmony	\$0.00	\$0.00	\$5,403.00
New Hope	\$0.00	\$3,164.29	\$2,641.58
Oak Grove	\$936.50	\$822.25	\$0.00
Oakton	\$0.00	\$550.00	\$1,245.00
Obion	\$660.00	\$660.00	\$100.00
Poplar Grove	\$500.00	\$100.00	\$850.00
Riceville	\$650.00	\$600.00	\$2,675.00
Sassafras Ridge	\$1,925.41	\$2,522.72	\$669.22
Shiloh	\$1,200.00	\$1,200.00	\$391.65
Springhills	\$3,072.82	\$3,070.85	\$2,100.00
West Hickman	\$13,113.11	\$9,999.96	\$6,710.00
Subtotals	\$269,510.60	\$205,111.40	\$121,513.95

ASSOCIATION/ CHURCH	COP 2004-2005	COP 2005-2006	OTHER 2005-2006
West Union Association			
Antioch	\$13,170.64	\$12,543.37	\$6,538.43
Bandana	\$2,938.58	\$1,100.00	\$4,523.91
Barlow First	\$33,220.05	\$36,091.39	\$6,784.00
Bellview	\$28,701.33	\$25,058.62	\$35,159.45
Bethel	\$521.33	\$368.78	\$200.00
Bethlehem	\$375.00	\$475.00	\$305.36
Blandville	\$1,272.50	\$1,000.00	\$531.00
Calvary	\$600.00	\$600.00	\$678.00
Cane Creek	\$300.00	\$275.00	\$1,396.00
East	\$8,000.00	\$8,000.00	\$2,468.45
Faith	\$2,733.83	\$7,742.93	\$1,276.21
First Liberty	\$300.00	\$300.00	\$150.00
Freemont	\$600.00	\$870.34	\$385.00
Friendship	\$4,823.00	\$6,132.47	\$5,024.26
Grace	\$2,780.01	\$2,485.66	\$1,640.00
Harmony	\$9,234.72	\$8,290.57	\$5,152.52
Highview	\$0.00	\$0.00	\$0.00
Hill Crest	\$0.00	\$0.00	\$0.00
Immanuel	\$2,166.00	\$2,000.00	\$25,517.36
Keval	\$13,260.24	\$12,814.11	\$3,174.40
LaCenter First	\$31,070.00	\$29,864.00	\$4,673.50
Lone Oak First	\$183,749.67	\$200,109.44	\$85,467.87
Lovelaeville	\$1,547.12	\$1,175.82	\$1,264.70
Mount Moriah	\$0.00	\$0.00	\$0.00
Mount Pleasant	\$3,766.00	\$3,917.00	\$1,780.00
Mount Zion	\$0.00	\$23,260.83	\$1,149.16
New Hope	\$240.00	\$220.00	\$359.85
New Life	\$490.35	\$456.92	\$0.00
Newtown Creek	\$17,914.40	\$16,725.88	\$5,968.96
Oak Grove	\$588.12	\$465.42	\$0.00
Oaklawn	\$25,071.07	\$22,923.22	\$9,840.62
Ohio Valley	\$0.00	\$6,502.84	\$6,509.22
Olivet	\$62,199.96	\$44,496.33	\$11,153.75
Oscar	\$7,180.87	\$7,216.18	\$1,901.92
Pacalah First	\$163,862.50	\$153,747.96	\$59,018.21
Park Avenue	\$0.00	\$0.00	\$0.00
Providence	\$1,727.37	\$2,750.93	\$500.00
Reidland	\$22,592.97	\$74,304.81	\$6,759.75
Rosebower	\$40,540.66	\$54,294.11	\$7,656.94
Schneidman Road	\$275.00	\$225.00	\$174.00
Southside	\$477.00	\$0.00	\$1,902.70
Spring Bayou	\$13,200.00	\$13,200.00	\$4,434.45
Temple	\$133.03	\$0.00	\$0.00
Trinity	\$15,494.79	\$14,123.41	\$11,892.05
Twelve Oaks	\$24,397.08	\$26,644.47	\$10,345.36
Washington Street	\$1,725.00	\$1,650.00	\$0.00
West End	\$15,250.66	\$13,350.01	\$4,622.40
Wice	\$0.00	\$0.00	\$400.00
Wickliffe First	\$3,117.84	\$150.00	\$821.19
Subtotals	\$7,616,608.69	\$8,379,922.82	\$339,500.95
Whites Run Association			
Bramlette	\$1,538.60	\$0.00	\$0.00
Carrollton First	\$9,915.99	\$10,748.29	\$7,712.00
Cove Hill	\$0.00	\$0.00	\$3,657.52
English	\$1,343.65	\$1,445.00	\$1,724.37
Ghent	\$615.50	\$594.56	\$6,430.54
Jordan	\$817.08	\$874.17	\$160.00
Mount Hermon	\$3,349.35	\$4,081.14	\$1,146.25
Sanders	\$1,500.00	\$3,250.00	\$460.00
Whites Run	\$3,506.00	\$2,692.00	\$739.00
Worthville	\$9,047.89	\$8,201.00	\$2,983.00
Subtotals	\$31,634.06	\$31,886.16	\$25,012.68
Miscellaneous			
Abundant Life	\$1,046.00	\$1,246.00	\$10.00
Allen Grove	\$0.00	\$0.00	\$0.00
Antioch	\$0.00	\$0.00	\$0.00
Ashland First	\$2,326.00	\$8,445.40	\$8,272.10
Athens	\$0.00	\$0.00	\$0.00
Bardstown Christian Fellowship	\$0.00	\$0.00	\$0.00
Beaver Creek	\$0.00	\$0.00	\$0.00
Beech Grove	\$0.00	\$0.00	\$0.00
Beech Spring	\$0.00	\$0.00	\$0.00
Belmor	\$0.00	\$0.00	\$0.00
Benton First	\$44,126.55	\$45,768.47	\$7,901.14
Benton First Missionary	\$25,694.59	\$18,886.79	\$7,313.99
Bethel	\$0.00	\$0.00	\$0.00
Bethel Berry	\$0.00	\$0.00	\$0.00
Big Brush	\$0.00	\$0.00	\$0.00
Big Laurel	\$0.00	\$0.00	\$0.00
Birch Lick	\$0.00	\$0.00	\$0.00
Black Water First	\$0.00	\$0.00	\$0.00
Blue Lick	\$0.00	\$0.00	\$0.00
Bonnieville	\$0.00	\$0.00	\$0.00
Bracktown First	\$0.00	\$950.00	\$0.00
Broadway	\$0.00	\$0.00	\$0.00
Calvary	\$3,179.00	\$2,313.00	\$5,701.00
Calvary	\$600.00	\$600.00	\$645.00
Calvary Missionary	\$0.00	\$0.00	\$0.00
Calvary Road	\$1,794.00	\$0.00	\$0.00
Calvert City First	\$0.00	\$0.00	\$37,471.08
Canaan Christian	\$0.00	\$0.00	\$0.00
Carpenter	\$0.00	\$0.00	\$0.00
Cedar Cross	\$0.00	\$0.00	\$0.00
Cedar Hill	\$0.00	\$0.00	\$0.00
Mount Point	\$0.00	\$3,755.91	\$0.00
Central	\$1,148.96	\$585.87	\$3,872.23
Charleston 2nd Praise & Worship	\$0.00	\$0.00	\$0.00
Christ	\$52,562.05	\$61,102.56	\$27,379.32
Christ Cathedral	\$0.00	\$0.00	\$0.00
Christ Community	\$0.00	\$0.00	\$0.00
Christ is King	\$250.00	\$0.00	\$100.00
Church of Life	\$0.00	\$210.00	\$300.00
Clear Branch	\$0.00	\$18.73	\$0.00
Clear Creek Community	\$33.90	\$0.00	\$0.00
Coalport	\$0.00	\$0.00	\$0.00
Community	\$869.64	\$459.00	\$0.00
Community Fellowship	\$1,960.80	\$1,792.07	\$1,038.00
Community Fellowship	\$0.00	\$0.00	\$0.00
Cooper Chapel Road	\$0.00	\$0.00	\$0.00
Corinthian	\$0.00	\$0.00	\$0.00
Cornerstone	\$2,400.00	\$2,400.00	\$750.00
Cornerstone	\$600.00	\$600.00	\$0.00
Creekside	\$279.00	\$0.00	\$0.00
Crossing	\$0.00	\$3,114.85	\$0.00

ASSOCIATION/ CHURCH	COP 2004-2005	COP 2005-2006	OTHER 2005-2006
Crossland	\$0.00	\$0.00	\$0.00
Crossroads Fellowship	\$3,000.06	\$1,919.74	\$2,310.29
Crossroads to the Nations	\$0.00	\$1,669.43	\$1,000.00
Cub Run	\$0.00	\$0.00	\$0.00
Cumberland Gap Parkway	\$0.00	\$2,000.00	\$200.00
Davis Chapel	\$0.00	\$0.00	\$0.00
Dover	\$0.00	\$0.00	\$0.00
Drakesboro First	\$336.70	\$323.07	\$4,427.31
Drip Rock	\$0.00	\$0.00	\$0.00
Eagle Heights	\$22,000.00	\$28,000.00	\$100.00
East Fork	\$0.00	\$0.00	\$0.00
Ebenezer	\$0.00	\$0.00	\$0.00
Edmonton	\$5,266.71	\$4,875.90	\$2,776.00
Elim	\$0.00	\$0.00	\$0.00
Elliottville	\$0.00	\$0.00	\$800.00
Ellisburg	\$0.00	\$0.00	\$0.00
Elm Grove	\$18,199.25	\$17,266.93	\$14,381.87
Elm Grove	\$0.00	\$0.00	\$0.00
Emmanuel	\$0.00	\$0.00	\$600.00
Emmanuel	\$0.00	\$0.00	\$0.00
Emmanuel Fshp of Breathitt Co	\$0.00	\$310.95	\$112.00
Energized	\$0.00	\$0.00	\$0.00
Fairfield Second	\$0.00	\$300.00	\$0.00
Faith Missionary	\$650.00	\$650.00	\$700.00
Falling Springs	\$0.00	\$0.00	\$0.00
First Gethsemane	\$0.00	\$0.00	\$0.00
First Missionary	\$0.00	\$0.00	\$0.00</

PRAYER PARTNERS

Please pray for the following Kentucky Baptist ministries and missionaries:

Church at Cedar Creek in Stanford. Planted only one year ago, the church is reaching out under the leadership of Pastor Jefferson Callico to many dechurched young adults in Lincoln County. Currently involved in Sunday worship and home Bible studies, the church prayerfully is considering additional ministries that will help build bridges to their community. Pray that God will give courage to a mother and daughter team that is beginning a small group Bible study for middle school girls in November. Pray that God will grant wisdom and discernment about what outreach ministries the church needs to implement.

Mission Service Corps Missionary Arleen Miller of Christian County Baptist Association. Miller serves as co-site coordinator for Christian Women's Job Corps, a ministry of the association that assists women through life skills training, job skill development and Bible study. Pray for the spiritual growth of each leader involved in the mentoring and training. Pray that women attending the training will grow closer to God as they study the Bible, pray together and build relationships.

If you would like Kentucky Baptists to join in praying for a ministry of your church or association, please send the information to Eric Allen at Eric.Allen@kybaptist.org or call (866) 489-3530.

MOUNTAINS TO THE MISSISSIPPI

COMPILED BY STAFF

■ **BEECHMONT**—Hazel Creek Church will hold revival services Nov. 12-15 with **Danny Mooney** as evangelist.

■ **EDDYVILLE**—First Church will host a Discipleship Training rally Nov. 6, 7 p.m. **Jim Bryant**, director of missions for West Union Association, will present a dramatic portrayal of "George Mueller: Man of Faith and Prayer." **Tim Perdue** is pastor.

■ **GARRETT**—First Church ordained **Blaine Depoy** and **Tom Scott** as deacons Oct. 8.

■ **GRAY**—Indian Creek Church celebrated its 175th anniversary Sept. 17. The celebration, which attracted 135 people, included highlights of the church's history, recognition of former pastors, special music by the **Lundy Family Singers** and a message by Pastor **Ken Merida**.

■ **HOPKINSVILLE**—**Stanley and Peggy Adcock**, members of Second Church, celebrated their 50th wedding anniversary Oct. 17.

■ **LEXINGTON**—**William Runyon Jr.**, who serves at Hospice of the Bluegrass, recently was endorsed by the Cooperative Baptist Fellowship as a clinical pastoral education resident.

■ **MAYTOWN**—First Church will hold revival services Nov. 6-8, 7 p.m., with **Paul Schmidt** as evangelist.

■ **MURRAY**—Cherry Corner Church will hold revival services Nov. 1-4, 7 p.m., and Nov. 5, 11 a.m. and 6 p.m., with **Mark Lee**, director of Lake Salateeska Baptist Camp in Illinois, as

Spotlight on ...

Elizabethtown

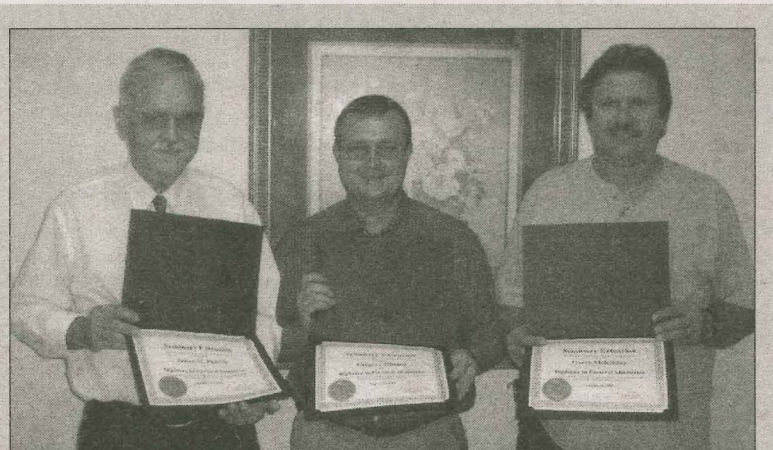


Northside Church will host former Southern Baptist Convention president **Jim Henry**, retired pastor of First Church of Orlando, as guest speaker Nov. 19 at 9 and 10:30 a.m. Pastors and church ministry staff are invited to lunch with Henry, hosted by Northside Church and Severns Valley Association, at noon on Nov. 20. Reservations are required. Call Northside Church at (270) 765-6424 by Nov. 13.

evangelist. For more information, call (270) 759-4489. **Tom Mathis** is pastor.

■ **PADUCAH**—**Kevin McCallon**, pastor of First Church since 1993, has resigned effective Nov. 19 to become pastor of First Church of Kingwood, Texas.

■ **SANDERS**—Jordan Church will hold revival services Nov. 10-11, 7 p.m., and Nov. 12, 11 a.m., with **Kyle McDanell** as evangelist. For more information, call (859) 428-9396. **John Collett** is pastor.



MINISTRY DIPLOMAS Culminating 10 years of study, two pastors and a layman from Gasper River Baptist Association recently were awarded pastoral ministry diplomas by the Southern Baptist Seminary Extension Department. **James Pharris** (left), pastor of Mount Liberty Baptist Church in Morgantown; **Gregory Hillard** (center), pastor of New Harmony Baptist Church in Beaver Dam; and **Garry McKinney**, a member of Pleasant Grove Baptist Church in Quality, were presented the diplomas by Seminary Extension Director **Bill Vinson** during Gasper River Association's annual meeting at Rochester Baptist Church.

Southern celebrates Heritage Week

Louisville (BP)—Southern Baptist Theological Seminary celebrated its past and looked to the future during the school's annual Heritage Week celebration Oct. 9-13.

Steve Gaines, pastor of Bellevue Baptist Church in Cordova, Tenn., was among featured speakers for the week.

Southern also awarded the Bruce W. Benton Distinguished Service Award to Harry Nurse, a Louisville businessman who serves on the seminary's foundation board.

Gaines reminded students that God is sovereign in His appointment of ministers to the places in which they will serve.

"You don't have to promote yourself in the ministry. In fact,

you shouldn't promote yourself in the ministry," he said. "God knows where you are. ... He knows where you need to be at exactly the right time."

Ministers should not confuse effectiveness with success because God anoints the performance of His heralds, Gaines said. A pastor who faithfully preaches the Word of God week in and week out in the place where God calls him is truly successful, he added.

Gaines also said God allows the persecution of His gospel preachers both for their good and His glory.

Other speakers included Southern Seminary President **Al Mohler** and **Russell Moore**, dean of Southern's school of theology.



CALENDAR OF EVENTS

November

3-4 Chaplaincy Training for Suicide Intervention, Baptist Building, Louisville.

3-4 International Student Conference, Cave City Convention Center.

4 101 Workshop, Bellevue Baptist Church, Owensboro.

10-12 All State Jr. High Choir, Eastwood Baptist Church, Bowling Green.

10-12 Crossover, Bowling Green.

13 Kentucky Baptist Pastors' Conference, First Baptist Church, Bowling Green.

14-15 KBC Annual Meeting, First Baptist Church, Bowling Green.

For more information, call (800) 266-6477 or visit www.kybaptist.org

Charles Jones, longtime KBC leader and pastor, dies at 79

Pineville—Charles Jones, a former Kentucky Baptist Convention vice president, died Oct. 26. He was 79.

Jones, pastor of Riverside Baptist Church in Fourmile for 13 years, previously was pastor of First Baptist Church of Pineville for 34 years. He also had been pastor of Sand Spring Baptist Church in Lawrenceburg, First Baptist Church of Leitchfield, Second Baptist Church of Greenville, First Baptist Church of Morgantown and Rockbridge Baptist Church in Springfield.

Bruce Walzer, director of missions for Bell Baptist Association, described Jones as "one great gentleman."

Jones "had the knack to reach out and touch the lives of people," Walzer noted. "His passion was lost people. His passion was letting Christianity be filled with joy.

"His main ambition was to do

whatever the Lord wanted him to do," he added. "He jumped into it and stuck to it."

Jones served as KBC second vice president in 1970-71 and as first vice president in 1971-72. He also was a trustee for the Kentucky Baptist Homes for Children and Oneida Baptist Institute.

A graduate of Campbellsville University and Western Kentucky University, Jones was named a distinguished alumnus of Campbellsville and received an honorary doctorate of divinity from the University of the Cumberlands. He also was a World War II U.S. Navy veteran.

Jones is survived by his wife, Imogene, three sons, eight grandchildren and one great-granddaughter.

His funeral service was held Oct. 29 at Riverside Baptist Church. Memorial gifts may be made to the Kentucky Baptist Homes for Children.

CLASSIFIED ADS

SEEKING: Enthusiastic youth minister, full-time or bivocational (requires minimum of 20 hours a week). Please send resumé to Ferguson Baptist Church, PO Box 247, Ferguson, KY 42533. For more information, call (606) 679-1690.

SEEKING: Full-time pastor for First Baptist Church, 916 Main Street, Paris, Ky. We are a growing church located in central Kentucky with an average worship attendance of 240. Resumés should be sent by Jan. 15, 2007, to: Pastor Search Committee, PO Box 327, Paris, KY 40362; or e-mail: fbcparis@aol.com.

SEEKING: Full-time student minister (grades 1-12). Please send resumé to: First Baptist Church, 916 Main St., Paris, KY 40361, Attn: Personnel Committee.

SEEKING: Full-time pastor for First Baptist Church, Brandenburg, Ky. Average Sunday school attendance: 170; worship: 275. Mail resumé to: Shirley Jones, 155 Meade Springs, Brandenburg, KY 40108.

SEEKING: A God-led pastor (full-time or bivocational) for conservative Southern Baptist church (averages 70-90 in worship). Send resumé to: Pastor Search Committee, Polard Baptist Church, 444 Blackburn Ave., Ashland, KY 41101.

SEEKING: Director of missions for Severns Valley Association of Baptists. Resumés already submitted will be retained. Please submit a cover letter, resumé and references to: DOM Search Committee, PO Box 541, Elizabethtown, KY 42702.

SEEKING: Senior pastor for a medium-sized Southern Baptist church. Please send a resumé to PO Box 888, Anderson, SC 29622.

SEEKING: Full-time minister of youth to work with 7th-12th graders, their families and adult volunteers to develop and implement a comprehensive youth ministry leading youth to a personal relationship with Jesus Christ and a deeper spiritual understanding. College degree preferred; seminary desirable. Send resumé by Nov. 30, 2006, to: Search Committee, Westside Baptist Church, 207 Robertson Road South, Murray, KY 42071.

SEEKING: Part-time music minister for Ghent Baptist Church in Carroll County, Ky. Minister will be focused on leading the congregation in blended worship. Experience preferred but not necessary. Send resumé to: Ghent Baptist Church, PO Box 457, Ghent, KY 41045. Questions, call (502) 347-5540 or 222-2221.

SURVEY: Pastor search committee members (current and recent), please take confidential online survey to help SBC pastor with PhD research. For username and password, contact info@southernbaptistresearch.com.

TICKETS: Southwestern Seminary State Alumni Luncheon. Tuesday, Nov. 14, noon. Cost: \$20. Mariah's Restaurant (801 State St., Bowling Green). RSVP to: Darren.Gaddis@gocentral.org 528-6650 or dgaddis@gocentral.org by Nov. 10.

Beyond Beirut

As cease-fire holds, Baptist volunteers help rebuild homes in rural Lebanon

Editor's Note: For security reasons, the names of some of the people in this article have been changed.

By Don Graham
Baptist Press

Khiam, Lebanon (BP)—Bright sunlight filters through the refrigerator-sized hole in the roof of Yacoub's modest single-story house. Near the end of a hard day's work, he looks to the tattered remains of his living room sofa to rest his lean 70-year-old frame; as he sits, a cloud of thick gray dust erupts into the air.

Reaching for the floor, Yacoub brushes aside chunks of concrete and picks up a clock that once hung on the wall, its hands now frozen at 1:14 a.m.—the moment a bomb shattered the only home he has ever known.

"This house is precious to me," he explained. "I was born in this house, grew up in this house and I'd like to die in this house."

Yacoub's residence is one of thousands in Lebanon damaged or destroyed during the 34-day conflict between Israel and Hezbollah, but Yacoub won't be picking up the pieces alone. Since a United Nations-brokered ceasefire took effect Aug. 14, Southern Baptists have poured more than \$650,000 in aid into the war-torn region. Now, more help is on the way thanks to a team of volunteers led by the Southern Baptists of Texas Convention.

The four-man team of experienced disaster relief workers completed their 10-day assessment in Lebanon on Sept. 29, concentrating their efforts in and around the southern city of Khiam.

Andrew Sanders, Southern Baptist disaster relief coordinator and operations manager in Lebanon, explained the need for aid is greater in the south because most relief organizations are focused on Beirut,

leaving many of Lebanon's smaller cities to fend for themselves. "The devastation is tremendous," Sanders said. "It's on every level. In some villages, more than 70 percent of the homes are flattened."

Sixteen-year-old Dima's neighborhood is among Khiam's hardest-hit areas. Though shrapnel holes riddle her home's cinderblock walls, Dima and her mother are fortunate; the damage can be repaired. Little more than 100 yards away, however, sits an indistinguishable mound of broken concrete and twisted rebar. It's all that remains of a building that housed Dima's neighbors, seven families in all.

"That's not my neighborhood," she remembered telling her uncle when she first saw the destruction. "That's not it. And that's not my home. Take me back. It was destroyed. It was really, really horrible to see it like this."

Workers face tough situations

Jim Richardson, director of disaster relief for the Southern Baptists of Texas Convention, said Southern Baptist volunteers are desperately needed in Lebanon.

From patching holes to replacing windows, the team explored a handful of project possibilities, including demolition and cleanup.

During the assessment, the team also discovered an obstacle that will limit volunteers' activity: Because Lebanese homes are made entirely of reinforced concrete, heavy construction equipment is required for major repair and rebuilding work—equipment not accessible to volunteers.

"It's a different situation than we're used to with disaster relief in the States—no wood, a lot of rock, a lot of concrete," said Larry Shine, task force director for cleanup and recovery for the Southern Baptists

of Texas Convention.

While they could not move 1,200-pound slabs of concrete, the team did find a project that's ideal for volunteers and sharing the gospel: installing roof-top water tanks. Lebanese homes rely on the large, gravity-fed, plastic tanks for running water, but shrapnel and flying debris from exploding bombs and rockets destroyed many of the tanks.

"You can have a roof over your head, but if you don't have water, what's the point?" Shine said. "That's something we can do. And it's not real technical. The materials are readily available here, and we can teach a volunteer how to do it in just a few minutes. Plus, they can spend more time building relationships."

And those relationships, Richardson emphasized, are the team's top priority.

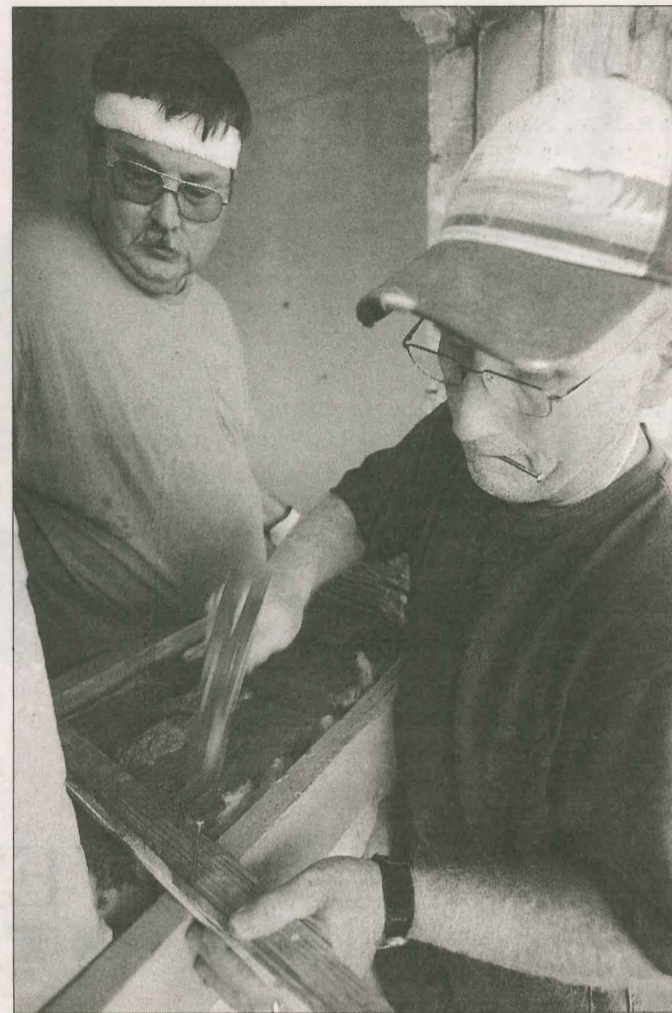
"It's not about brick and mortar, it's about making relationships with people," he said. "Water tanks give you the opportunity to be involved with the maximum number of people—to interact with families, not only to install a tank, but to take an hour or so to sit down and visit with the family."

Touching people's lives

Sanders believes this type of disaster relief ministry is particularly effective in the Muslim world because it demonstrates Christ's love in an uncontrived setting.

"When we come and we show Christ, and we mean what we say, it's more effective in touching people's lives," he said. "They will remember it always as the Spirit of God works in their lives; the Christian came and showed love to you, the Christian came and stood by you, the Christian came and comforted you."

Sanders added that Lebanon's



harsh winter soon will provide volunteers another opportunity to offer comfort—distributing portable heaters and blankets to help families endure the cold.

Though hostilities have ceased, disaster relief in Lebanon is not for the faint of heart, said Richardson, noting that working in a war zone involves real danger. Unexploded ordnance—especially cluster bombs—is one of the safety concerns.

Bob Guinn, a volunteer with the Georgia Baptist Convention's disaster relief ministry, believes potential volunteers should commit themselves to prayer and fasting before making the decision to go.

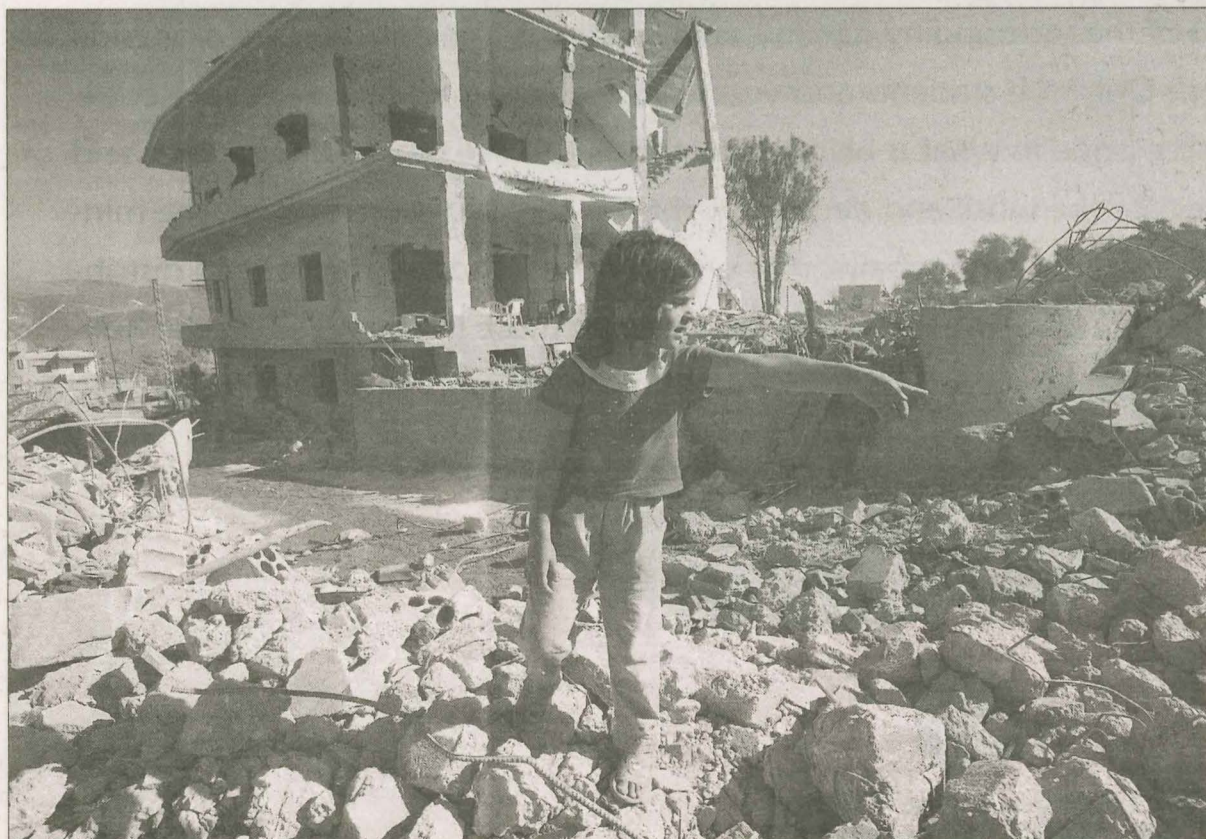
"You've got to have faith that if the Lord wants you to come, the Lord is going to take care of you while you are here," Guinn said.

Volunteers also must avoid a danger that could cripple their witness or blind them from God's calling altogether—Western stigmas associated with Muslims and Middle Eastern nations like Lebanon. "By getting an understanding of the culture here and what their needs and expectations are, we have already diffused an awful lot of the ideas that there's a terrorist behind every bush," Shine said.

Southern Baptists interested in disaster relief work in Lebanon can learn more by e-mailing Richardson at jrichardson@sbtexas.com. Trips are planned through mid-December and more may be scheduled for 2007. "We need volunteers to come here and look into the faces of people, eyeball to eyeball, hear their story and be able to inject the hope of Jesus Christ into their situation," Richardson said.

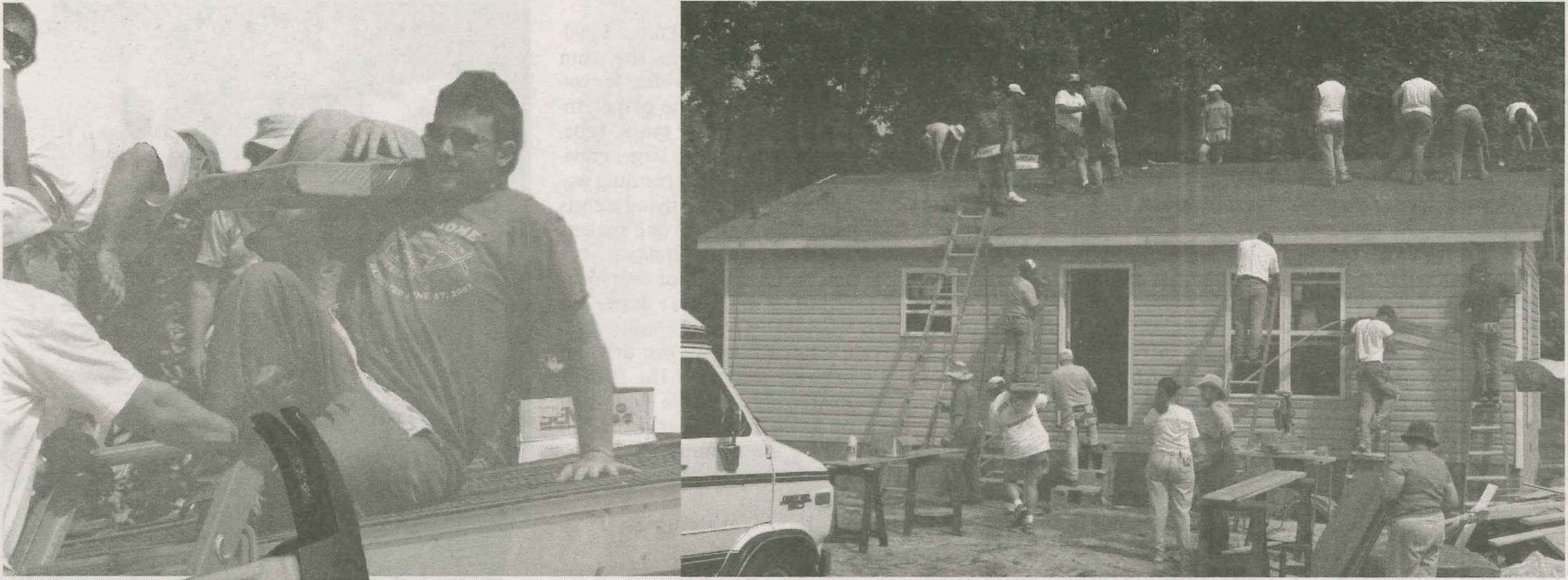
MAKING A DIFFERENCE

Larry Shine (left) and Jim Howard, Texas volunteers in war-torn Lebanon, hammer boards they'll use to square a window frame in the home of a 70-year-old man. Though much of the damage can be repaired, the man's garden was destroyed, a loss he compares to the passing of an old friend. (BP photos)



SAD PLAYGROUND A Lebanese girl plays among a massive pile of rubble in the city of Khiam, Lebanon. Behind her stands the remains of a two-family home destined for demolition.

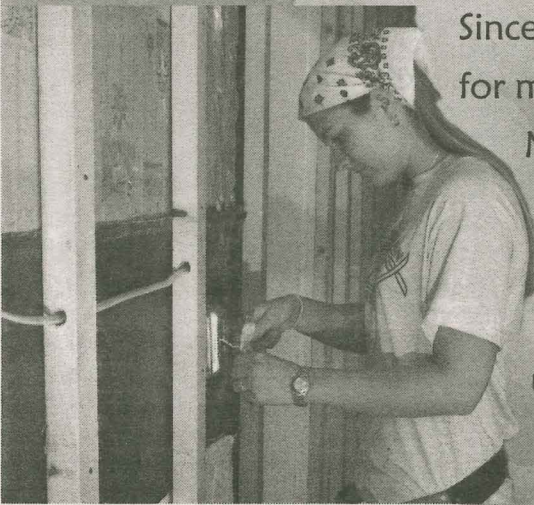
Q: What is Service?



A UNIVERSITY of the CUMBERLANDS' MOUNTAIN OUTREACH PROGRAM

in Williamsburg, KY

*"...not a handout but a hand up."
- Marc Hensley, director*



Since the program's start in 1982, Mountain Outreach has constructed 123 homes for members of the surrounding communities. The family members work alongside Mountain Outreach students and volunteers to complete every home. Recipients have pride in what is being done for them, take part in the process, and appreciate the work and dedication it takes to build these homes. The ministry also makes home repairs, digs wells, builds handicap ramps, and distributes donated clothing and household items for those in need. During the holidays, the program holds special gift days where parents and children are able to choose free gifts for family members.



Leadership. Service. Growth.
(800) 343-1609 www.ucumberlands.edu