

Baptist and Reflector

"SPEAKING THE TRUTH IN LOVE" ★ ★ ★ JOURNAL TENNESSEE BAPTIST CONVENTION

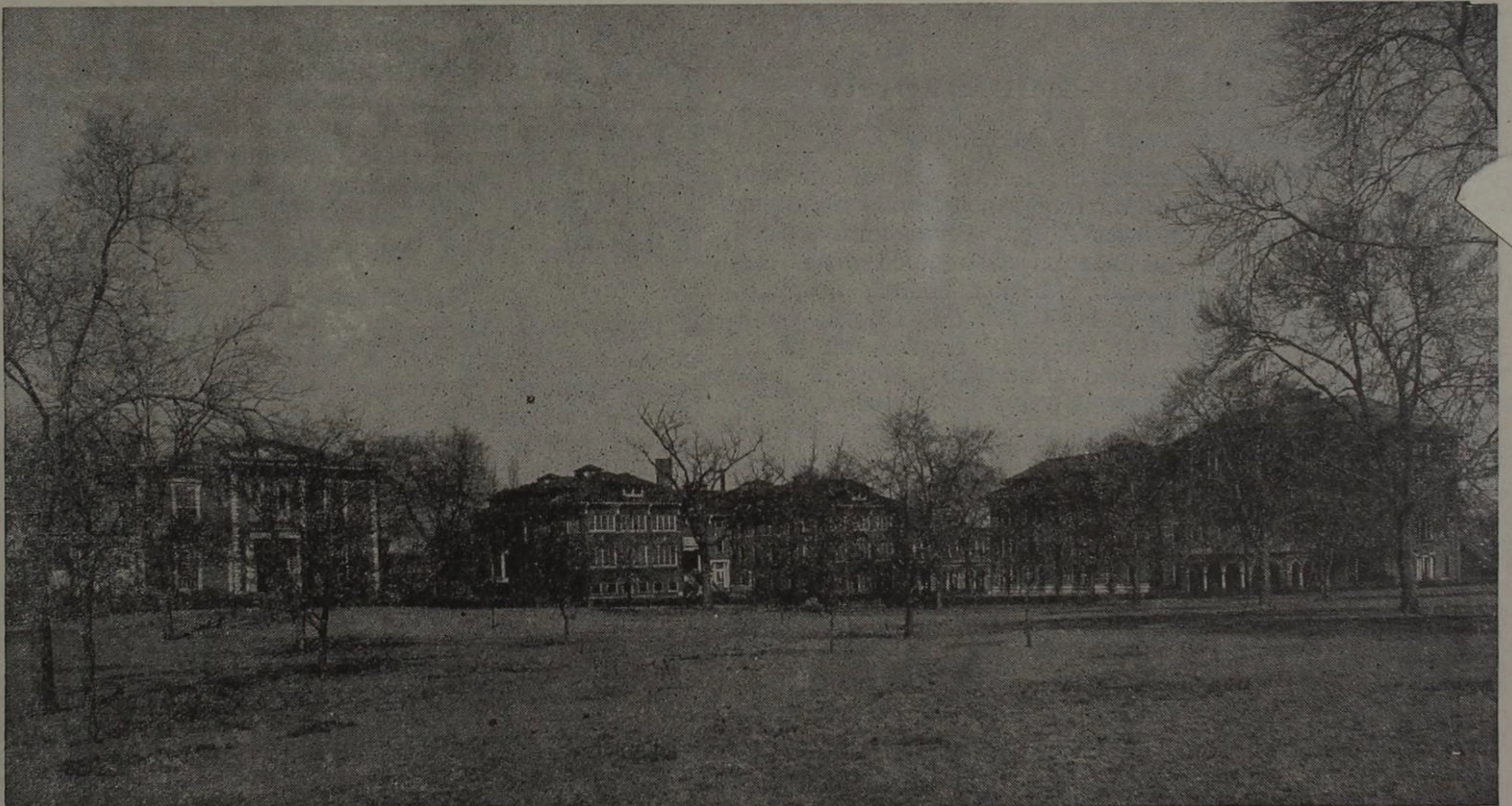
VOLUME 115

THURSDAY, SEPTEMBER 8, 1949

NUMBER 36

MID STATE BAPTIST ★ ★ ★ HOSPITAL ★ ★ ★

NASHVILLE, TENN.



*B*LEST be the hospital whose doors are never closed against the sores and
ills of men. Lord, reimburse each doctor, surgeon, white-capped nurse
with happiness and health. For they perform thy works through night and day.
Please guide their hands as they assuage the sufferings of youth and age.

—L. J. MULHEARN

LEBANON TENN

Baptist and Reflector

O. W. Taylor
Editor

C. W. Pope
Executive Secretary

Fred W. Noe
Business Manager

DIRECTORS OF TENNESSEE BAPTIST PRESS, INC.

Edwin E. Deusner, President; Richard N. Owen, Vice-President; J. R. Kyzar, Secretary; Andrew Tanner, E. L. Smothers, W. R. Hamilton, T. C. Meador, C. C. Bryan, David Livingstone

Editorial and General Office,
149 Sixth Ave., North, Nash-
ville 3, Tenn.

Terms of Subscription—Single subscriptions payable in advance one year, \$2.00, six months, \$1.00. Other rates and plans sent on request.

We do not assume the cost of cuts.



Obituaries, Obituary Resolutions and Non-Obituary Resolutions—200 words free; 5 cents each for words in excess of 200.

Advertisements—Rates upon request. Announcements of open dates by evangelists and singers, and others, \$2.00 per insertion.

Advertising Representative—Fred W. Noe

Entered at Postoffice, Nashville, Tenn., as second-class matter as a weekly except during Christmas week, under the act of March 3, 1879.

TENNESSEE BAPTIST PRESS, INC., NASHVILLE, TENN.

EDITORIAL

Danger Signals For Baptists

By CHARLES W. POPE

Few people who experienced the terrible depression days of the Nineteen Thirties will ever forget them. Banks crashed, business houses failed, industries closed. Bread lines formed in the cities and throngs of unemployed tramped the streets looking vainly for employment. Mission boards, hospitals, and schools found it difficult to keep their doors open. Some churches lost their houses for worship. Hardest hit of all were denominational systems and institutions. Most of these institutions were encumbered with heavy indebtedness. Practically every denominational institution in Tennessee was burdened with heavy indebtedness.

The time came when it was difficult to pay the interest on obligations. The very existence of the Home and Foreign Mission Boards was threatened. Then came long years of sacrificing and curtailing programs to pay interest and principal of heavy debts. Finally, in 1943 the debts on our denominational institutions were paid, and for the first time in many decades Baptists were free of debt. This fact gave Baptists a prestige which they had never enjoyed before and confidence in their ability to do big things for God. Since 1942 Tennessee Baptists have given more to denominational causes than in the other 109 years of their convention history combined.

Signs of Increased Indebtedness

But today there are grave signs that Baptists may repeat the mistakes of the past! We have only been free of the shackles of debt for six years, but the present trend of some of our institutions, if continued, will soon plunge them again into the bondage of indebtedness. Over-expansion programs which tax to the limit the income for operation expenses, and borrowing money to erect buildings will spell doom for our institutions when the income to these institutions begins to decline. A sudden decline in income would be disastrous to some of our institutions today.

Why Debts Would Be Disastrous

The reasons for this are obvious. Our denominational causes and institutions must look to the churches for their support. In times when money is plentiful the churches can carry their own obligations and give generously to the denomination. How-

ever, the majority of the churches are now engaged in building programs or they are carrying obligations of this nature. In the event of a recession the income of the churches would be greatly reduced. Since the churches would have to take care of their own obligations most of the loss in income would have to be absorbed by their gifts to denominational causes.

Play Safe

This is no time for a denominational institution to borrow money for any cause! If we cannot operate with the present income, then what will we do when the income is smaller? Let us revise our budgets and bring our expenditures safely within our income. Don't borrow money to erect denominational buildings! We doubt the wisdom of churches, even though they are at the source of our income, becoming involved in gigantic indebtedness for building purposes; and for an institution remotely removed from this source of income the gamble of indebtedness invites disaster. Baptists, like the ancient Hebrews, stand today at Kadesh Barnea. Will we remain free, or will we return to the Egyptian bondage of indebtedness? Surely, surely, Baptists will not make this mistake again!

Today's Challenge To Christian Education

By CHARLES W. POPE

When the first church colleges were established they were designed to meet the two most urgent needs of that day, namely, an educated ministry and educated school teachers. The courses of study and the degrees offered were primarily for these objectives. As new colleges sprang up in the wake of increasing and expanding population they, too, followed this pattern. In that day a large percentage of students enrolled in colleges were either ministers or school teachers. These schools served their generations well. The pattern they adopted was suited to their needs. They met the challenge of their day.

New Educational Needs

Today we have come upon new times with additional needs in the field of Christian education. College education is no longer restricted to ministers and school teachers. Christian churches realize that it is of tremendous importance to have doctors, lawyers, scientists, business and professional men and women educated in the Christian atmosphere of a Christian school.

Weakness of Our Present System

Here is the weakness in our present denominational educational system: We have the schools to provide higher education for our preachers and teachers, but with few exceptions, we have made only meager provisions for the remainder of our constituency. We have considered it very important to have our teachers and ministers educated in our own schools; but we have left our doctors, lawyers, business and professional men and women to get their special training wherever they can. In fact, we are trying to meet the educational needs of our people today with the college pattern of colonial days.

A Step In the Right Direction

It may be argued that no denomination could hope to offer professional education for all its constituency, and that such a system would be economically prohibitive. This is only true in part. Tennessee Baptists have three four year co-educational colleges, and with only a few exceptions they are all doing practically the same type of work. If these three schools, in addition to their present basic courses, could become strong in some special field, one in law and social science, another in the teaching profession, and the other in the sciences, they would greatly improve the quality and broaden the scope of service to their constituency. The law school at Cumberland University is a step in that direction. In such a program the three schools would cease to be in competition with each other, and each school would have a State-wide appeal and service.

A Digest of Religious Thought

By RUSSELL BRADLEY JONES, Contributing Editor, CHATTANOOGA, TENNESSEE

Neither the editor nor contributing editor necessarily concurs in the opinions expressed on this page unless so stated.

Education and Religion

Albert C. Outler, in
"Colleges, Faculties and Religion"

Religion and the religious life-view have been effectually discounted (in the educational revolution) and made to appear at the very most an accessory, but not an essential, component of the good life. Spurred by the twin fears of sectarian bias and "indoctrination" we have actually promoted religious indifferentism and have given aid to militant secularism in our academic communities and in the larger society in which they exist. And thus it has happened that the secularists have won their most striking victory in over a century. "The democratic creed itself" (the lowest denominator of all liberal educational philosophies, including those with religious context) now becomes the highest common multiple of the new educational reform. The revolt against dogma has now become official dogma itself.

(Are we going to do anything about it?—R. B. J.)

A Vital Faith

John R. Ewers in Church Management

If you wish to know why so many of our modern young people leave the church in their late teens and early twenties, I will tell you: it is because they have never been converted! They have never had a real experience of the saving power of Jesus Christ. Christ has not been a "Saviour" to them, in any vital sense. He has been something to admire if one pleased, or to ignore, if one liked. In a word, they just grew up unregenerate and untouched by religion, except as they saw it in their good parents.

Saul was converted. He had a deep, shaking experience; he was completely changed. Having been bad, he became positively good; having been a pagan, he became a Christian. Read the 15th and 16th verses of Acts 9. Ponder those words; "A chosen vessel" . . . "must suffer for my name's sake." Most of us rebel and fall out at the point of suffering for our faith. But it must be as true for us as for soldiers, as for Paul or any other convinced person. You and I must become *new creatures* and there is no short cut to actual discipleship.

(This hits the bull-eye's.—R.B.J.)

Compulsory Chapel Attendance

Biblical Recorder

Recently Dr. Arnold S. Nash, Chairman of the Department of Religion at the University of North Carolina, made the statement that "compulsory chapel service should be held by all church colleges." In explaining the basis for this statement Dr. Nash stated: "The essential point I was trying to make was that the church-related college should stand by its principles. No educational institution, I argued, that is really worth its salt entertains the idea of optional examinations, i.e., if we interpret the word examination sufficiently widely to indicate means according to which the abilities of students can be estimated. If a church-related college feels (and most of them do) that examinations are sufficiently important to be compulsory, then I do not see why religious services should not be compulsory. If they are made optional, then that is equivalent to saying that the college authorities do not regard them, as they do examinations, as being really important. In other words, if a church-related college were to make both attendance at examinations and attendance at college services optional, then such a college would be saying that both examinations and services are equally important."

(Sounds like good sense to us.—R. B. J.)

Evolution Discounted

Home Missions

From the day that Darwin's theory of evolution became generally accepted in scientific circles, intellectuals have heaped scorn and ridicule upon the Bible story of creation. Anyone daring to maintain that the Bible record is correct was laughed at as ignorant and unscientific.

But now two scientists, Dr. R. A. Alpher and Dr. R. Herman, Johns-Hopkins physicists, have declared it to be their conviction that creation, instead of occupying millions of years, could have been accomplished in three years. Basing their figures on the life span of the neutron, they are reported as saying that "At the moment of explosion (the Bible says, 'let there be light') there were no elements, only separate particles. From that moment," they say, "it took from one thousand to ten thousand seconds for the protons, neutrons, and electrons to group themselves together into the known neutral elements. From these elements, the earth, the sun, stars, and galaxies were formed."

Whether or not God employed the mysterious processes of "nuclear fission" when "He spake, and it was done," we shall not know until He sees fit to reveal all the secrets of the universe, but at least we can take comfort from the fact that scientists of repute have at last admitted that a sudden creation was not only possible but probable, and, by deduction, that the long aeons of evolution were not only unnecessary, but absolutely absurd.

(There have been first-rate scientists all along who have rejected the theory of evolution.—R.B.J.)

Southern Baptists Ahoy!

The Southern Presbyterian Journal

reasons.

First, the Southern Baptist Convention has maintained an unswerving loyalty to the Word of God.

Second, it has refused to make entangling alliances with organizations which might compromise her position.

Third, it has developed and prosecuted an active program of advance, reaching out into new territories all the time.

Fourth, while many of her ministers have lacked the formal or complete educational equipment considered essential by others, they have been zealous and faithful in proclaiming a positive message of redemption from sin. The Gospel when faithfully preached always gets results.

Fifth, they are recognizing that differences in America are not geographical but doctrinal. This statement was frankly made on the floor of their last Convention and as a result 24 individual congregations in Oregon were admitted into the Southern Convention. As a crowning evidence of their beckoning hand to evangelical Baptist congregations in the North they plan their 1950 Convention in Chicago.

In our judgment the Church of Jesus Christ will become the power she should be in the world when she returns to insistence on sound doctrine and places less emphasis on ecumenicity.

(This understanding note from the Southern Presbyterian Journal is appreciated.—R.B.J.)

CHRISTIAN MINISTRY

Why Be Ordained

Baptists from the beginning have believed and followed the practice of ordaining those who have felt and satisfactorily demonstrated their call to the ministry. The New Testament use of the words pastor, bishop, elder indicates no orders in the ministry, but simply refers to the varied service of the same person. The qualifications are found in I Tim. 3:1-7 and instances of ordinations are given in Acts 14:28 and Titus 1:5.

Baptists believe also that God does the calling, therefore no man or group of men can keep the one called from exercising his talents in this liberty. We do believe every genuine call to preach is a positive call to prepare, but we have never required any educational test. Consequently for this we are severely criticized at times, both from within and without.

From custom, not the New Testament, we rather loosely use the expedient of licensing those called. This means simply a church's recommendation of that man's character and the possibility of talents. Sometimes churches will be forward enough to ordain a man before his practice proves his talents, or any pastorless church extends a call to him. Some of our brethren seem to have an idea they can't preach a lick without the formality of ordination. The Spirit through Paul warned earnestly against laying hands suddenly on anyone, I Tim 5:22. Baptists would do well to make haste slowly right here.

If the church takes the initiative, or the one called, and insists upon ordination with neither proof of talents nor call from pastorless church, it would appear that one is consciously or unconsciously depending upon the "Historic Episcopacy" instead of the Spirit of God. Such a procedure is disastrous to Baptists. We had better leave this practice to our Catholic and Episcopalian friends and keep ourselves free in the Spirit.

It would appear superfluous for the Spirit to call one with no place of service for him. In the 12th chapter of I Corinthians we find the Spirit giving gifts to men. Then in Ephesians, 4th chapter, it seems that these gifted men are set in the churches for specific purposes. God must have a blue-print for his preachers. Surely he does not leave this vital matter all to chance. It might be well to remember the Spirit distributes gifts besides that of preaching.

Personally I felt impressed to preach at least two full years before a church extended a call. During that time I preached wherever I could get somebody to hear me. Sometimes it was in a school house, tent, brush arbor, private home, or cross roads. Occasionally I got to preach in a church, but not often. I refused license and ordination both until a Baptist church was courageous enough to extend a call.

Brethren, if the Lord lays his hand on you, you get busy and exercise your talents at every opportunity. Don't worry too much about preaching in somebody's church in the beginning. Most of the lost people are not there anyway! If you exhibit talents, some church will find it out. You can't remain hidden long. Forget about being licensed or ordained. Believe God first, and risk the brethren later. You have all to gain and nothing to lose by this procedure.

The Shepherd's Home

Jesus in picturing the work of his ministers likened it unto that of a shepherd and his sheep. The defenselessness and helplessness of the sheep always necessitated the bodily presence of the shepherd. The sheep followed him from safety to green pastures and his watchful eye protected them from wolves and other predatory animals. We accept this imagery and believe it should be followed today, but in the phraseology of radio, we shepherd the flock by *remote control*. Consequently the sheep go for weeks without green pasture, are constantly exposed to the

wolves—some in sheep's clothing—feel few bandages and have little oil poured on their wounds. Sick sheep we are told are the only ones that follow a stranger. Isn't it about time for country and village churches to change from remote control to constant presence with the sheep if the flocks are to prosper?

God's plan with the Levites and priests was to distribute them among the cities where the people lived to whom they were to minister. Moreover, they were given suburbs for their cattle. Not only did they have houses, but also enough acreage for garden, chicken yard, cow lot, etc. They were to live on the tithes and offerings but were kept in close proximity to the life of the people. At regular intervals they went with their people down to Shiloh where the Tabernacle was situated, and after worship back home with the same people. Read Josh. 18 and 21 chapters if your fertile mind needs refreshing. Now look at Acts 14:28 and Tit. 1:5 and see how this same procedure—close proximity of the pastor to his people—was carried over into New Testament practice.

New Testament churches have long been moved into the open country, but the pastors did not follow. Today the Baptist pastor may live from 10 to 150 miles from his church field and both he and church think they are following the New Testament pattern. Both are to blame. The pastor doesn't care to be pestered with the demands of his members, and the church doesn't want the preacher to know too much about their conduct, besides all that it is much cheaper. This practice is doomed to pass away. We hope it does before the churches do. Rural Baptist churches in the North are rapidly passing off the scene. Shall we continue to follow pioneer tradition in church life when the oxcarts of transportation were discarded with the advent of the automobile?

There is a growing of discontentment among some of the rural and village churches with this practice and every once and awhile a comfortable pastorium is erected. Immediately it is occupied and that little church takes on renewed life and moves on out of its lethargy into its rightful place as a kingdom agency. Our hope is that this movement will become greatly accelerated. The Spirit of God must be back of this. Brother pastor, don't be the last one to get on when the wagon comes by. Better still, get busy and lead your best church to build a pastorium even if it continues for awhile on quarter or half time preaching. If you don't feel led to move into it yourself, the chances are that church could find another pastor.

To the observant and listening rural pastor there seems to be the sound of a going in the mulberry trees. Yes, there are better times ahead for our country and village churches.

—L. G. Frey

Lost, A Boy!

Not kidnapped by bandits and hidden in a cave to weep and starve and raise a nation to frenzied searching. Were that the case one hundred thousand men would rise to the rescue if need be. Unfortunately the losing of this lad is without dramatic excitement, though very sad and very real.

The fact is his father lost him. Being too busy to sit with him at the fireside and answer his trivial questions during the years when fathers are the only great heroes of the boys, he let go his hold.

Yes, his mother lost him. Being so much occupied with the wise and elderly who pay the bills and having good care for dignity, the minister and members were unmindful of the human feelings of the boy in the pew, and made no provision in sermon or song or manly sport for his boyishness. And so the church and many sad-hearted parents are now looking earnestly for the "lost boy."—BBS

Sunday School Lesson

By O. L. RIVES

Professor of Religious Education, Carson-Newman College

Lessons based on International Sunday School Lessons; the International Bible Lesson for Christian Teaching, copyrighted by International Council of Religious Education

For September 11, 1949

Jesus and the Psalms

TEXTS: Ps. 8:2; 22:1, 16-18; 91:9-12; 110:1; 118:22-23; Mt. 21:15-16, 38-42; Mt. 22:41-45; Lu. 24:44 (Larger)—Ps. 8:2; Mt. 21:15-16; Ps. 110:1; Mt. 22:41-45; Ps. 118:22-23; Mt. 21:38-39, 42; Lu. 24:44 (Printed)—Ps. 118:22 (Golden).

What did our Lord think of the Psalms? How, and upon what occasions, did He make use of them? A study of the above passages will answer these questions, as well as suggest additional questions together with their answers. Jesus' attitude and use of the Psalms should be ours, for we would do well to follow Him in this.

Space limitations of these notes compel the confining of the same to the instances referred to in the life of our Lord while upon the earth. The first of these (see below) takes place on Sunday of Passion Week and is associated with the Triumphal Entry into Jerusalem. The second and the third take place on Tuesday of the same week and are associated with Jesus' discomfiture of His enemies. The fourth takes place some days after the Resurrection and is associated with His giving of another Commission to His disciples.

I. THE PSALMS DESCRIBE THE ACCLAIM OF LITTLE CHILDREN FOR JESUS (Mt. 21:15-16).

1. **It was spontaneous upon their part.** The acclaim was akin in nature to the bursting into song by the birds at early dawn. The Light of the World was beginning to shine, and the very young of the city of Jerusalem were singing His praises.

2. **It was strengthening upon His part.** How it must have warmed the heart of the Master and empowered Him for the fearful ordeal ahead to have the children sing songs of praise to Him! Who among us today does not thrill to the songs of small children, praising Him? "Toy says that the meaning in which these words are used here is substantially the same as that of the Psalmist—God had shown these children a truth that the learned men did not see, and had thereby made them instruments of praise and strength," comments Broadus.

II. THE PSALMS ARE USED TO CONFUSE HIS CRITICAL ENEMIES (Mt. 22:41-45).

Tuesday of Passion Week was a Day of Controversy. In the Court of the Temple He meets one enemy after another and silences each one. They ask Him questions, seeking to ensnare Him, but without success. Finally Jesus turns upon the Pharisees with the question suggested by the quotation (Ps. 110:1). How could the Christ be both the Lord and the Son of David? It was a stunning question, from which the Pharisees did not recover, and no further questions were asked. The confusion wrought upon His enemies reveals two thoughts.

1. **Their hearts had become hardened.** Their attitude was one of bitterest hate, and so they shut themselves outside the pale of his love and help. This is dangerous and must be avoided.

2. **Their understanding was darkened.** It is ever this way. The heart gets wrong and the head follows. It is advantageous for the understanding when the attitude of the student is right toward God and toward those about him.

III. THE PSALMS FORETOLD HIS EXALTATION AS KING (Mt. 21:38-39, 42).

The Sanhedrin challenge Jesus' authority as a teacher. In reply He gives them three parables. In the second of these He uses the parable of the Wicked Husbandmen, in which the quotation from Ps. 118:22-23 occurs.

1. **At first He was rejected.** "He came unto His own, and His own received Him not" (Jn. 1:11). They did not know what they were missing.

2. **At last He will be accepted.** God has exalted Him already. Men are increasingly exalting Him. All will bow before Him. (Phil. 2:9-11).

IV. THE PSALMS EXPOUNDED TO TESTIFY CONCERNING HIM (Lu. 24:44).

1. **Concerning His Messiahship.** It was after His resurrection and perhaps shortly before His ascension. He took the psalms, as well as the other Scriptures, and unfolded them in the light of what had transpired before His disciples. They needed to have a word of re-assurance, probably. Here were the Old Testament writings, and here were the events. The two testified unmistakably as to His being God's Anointed.

2. **Concerning His Saviourhood.** "And that repentance and remission of sins should be preached in His name among all nations" (Lu. 24:47a). He is not only God's Anointed, but He is also man's Saviour. The two go together. If He is the one, then He must also be the other. Following the quotation of Ps. 118:22-23 by Simon Peter, with Christ as being the fulfillment, he goes on to say, "Neither is there salvation in any other: for there is none other name under heaven given among men, whereby we must be saved" (Acts 4:12).

The Young South

SEND ALL LETTERS TO AUNT POLLY

149 Sixth Avenue, N.

Nashville 3, Tennessee

Back at school? It's not as bad as you expected it to be, is it? When I was in school, the first thing our English teacher used to do when a fall term opened, was to ask us to write a theme or composition about vacation. Somehow it was always hard for me to think of a single exciting or interesting thing to include in those compositions!

Have you had to write your vacation report yet? I hope you remembered to tell about our August resttime experiences. It may be a relief to your teacher to read of some quiet activities instead of the noisy, hurried times which we sometimes tell about. You might even include one or two of your puzzles or games in your composition.



How would you like an assignment just the opposite of your school assignment? Instead of a vacation report, how about a "back to school" account? While school days are new and experiences are fresh in your mind, it will be fun to make up a story about them.

You know, a story may be in several forms. It may be written as stories are written in books or magazines; it may be in the form of a letter; or it may be a poem.



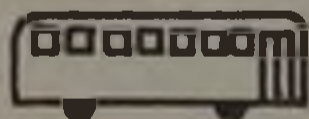
Perhaps you'd like to call your story "A Good Start," or "Back to School," or "Glad to Go." Or you may think of a better title—one which exactly fits your particular story.

Look at the pictures scattered throughout today's column. Perhaps they will suggest a story to you. As you look at each picture, let your imagination "play around" a bit. Who are the children? How old are they? If you don't already know them, give each of them a name.



Whose house is that? Where is the school? What time of year is it? How do the boys and girls feel about going to school? Why? What about the teachers? What happens on the way to school? On the way home? During the day? These and other questions which come to your mind may help you to get your story in mind.

Here are some words which might also be helpful. You do not, of course, *have to* use any of the words. They are simply to help you start thinking a story.



Children	Road	Lessons	Flowers
Played	Laughed	Tried	Studied
Bell	Classes	Stranger	Clothes
Mother, Father	Friends	Window	Blackboard
Lunch	Happy	Liked	Wished
Books	Thought	Bus driver	Fun
Teachers	Desk	Recess	Vaccination
Shared	Unhappy	Pencil, paper	Home

Your story may be as long as you wish it to be. It may be true or imaginary. If it is a good one, I'd like to share it with other Young South readers. How about it? May I expect your story within the next week? Won't it be fun to compare your story with the ones sent in by other Young South friends? Each story will probably be as different as the writers themselves are. And they will give me some good Young South word pictures. They will tell me some things about your own school—the way it looks, the teachers, the playground, your schoolmates. If you ride a bus to school, your story will probably tell me some of the good times you have on the way. If you walk to school, you will be able to tell some of the things you see and do along the way. It will be a better story (and a better word picture for me) if the boys and girls in your story do some of the things which you most enjoy doing at school. Perhaps even the things which they say will be remarks which you have heard during these first days back at school!



I'm looking forward to your story. Please don't dissappoint me!

Love,

AUNT POLLY

Sunday School Department

149 SIXTH AVE., NORTH. NASHVILLE 3, TENNESSEE

W. G. RUTLEDGE
Superintendent
MISS GLADYS LONGLEY
Associate



MISS OLETA MEEK
Elementary Worker
MISS DOROTHY CAMPBELL
Office Secretary

Southern Baptist Sunday School Program

(Continued from last week)

Organization for the Task

Before parents are invited to bring the entire family to Sunday school, churches should make provision for each member of the family.

On an average, the present number of classes for Adults and Young People should be multiplied by four.

Every Sunday school needs one class for every ten Intermediates, eight Juniors, eight Primaries, and eight Beginners that are to be enlisted. Every church needs a Nursery for every ten to twenty babies.

Every church needs one Cradle Roll worker for every seven to ten babies not enrolled in a Nursery.

Every church needs an Extension department worker for every ten people to be enrolled.

Some churches may not be able to immediately organize the number of classes needed to enrol all available prospects. Any church, however, can immediately organize some additional classes and every church, likewise, can continue to organize additional classes, departments, and new Sunday schools until every available person has been enrolled.

A Training Program for preparation of the workers:

Surely at no point is a pastor's positive leadership needed more, nor will it count more significantly, then in establishing a regular training program for his workers. Here are some suggestions which may be included in your program:

1. Plan a long-range achievement goal and adopt a program of training which will help you to reach it.
2. Select a leader—associate superintendent—to head the workers' training program.
3. Enrol a reserve group of prospective workers in regular training.
4. Keep accurate records of the training done.
5. Include in your training opportunities:
 - (a) Regular training course weeks
 - (b) A continuous training class (A weekly class of two hours would complete a course every four or five weeks.)
 - (c) Individual study through the Workers' Study Club. (Write for special folders.)
 - (d) Preview Study of the Sunday school lesson each quarter.
 - (e) A weekly officers and teachers' meeting.
 - (f) Send workers to Sunday School Weeks at Ridgcrest.
6. Recognize training achievements in annual training banquet or commencement day.

WESTERN DISTRICT IS 100% IN VACATION BIBLE SCHOOLS

Missionary John W. Williams reports that all the churches in Western District Association have had Vacation Bible Schools. Twenty-seven churches and twenty-seven church schools. Also two mission schools have been conducted. The association had an enrolment goal of 1500 and reached 1482 pupils. We have an idea that Bro. Williams was materially assisted by his talented wife. Rev. John W. Outland is the Associational Superintendent and acting Vacation Bible School leader. He has faithfully served in this dual capacity, making a great contribution to this achievement.

We would like to hear from other associations which have reached all the churches.

Baptist Training Union

149 SIXTH AVE., NORTH. NASHVILLE 3, TENNESSEE

CHARLES L. NORTON, Director
MISS ROXIE JACOBS, Int.-Jr. Ldr
MISS MARY ANDERSON, Assoc.



MISS EVELYN WILLARD
Office Secretary
O. O. MIXSON
Convention President

Central Training School—September 12-16, 1949 Shelby County Baptist Training Union Association Bellevue Baptist Church

N. R. Swartout, of the North Shore Baptist Church of Chicago has for the third successive year been secured to present his beautiful hymn pictures during two nights of the Central Training School of Shelby County Baptists to be held at Bellevue September 12-16, 1949. He will also teach a class in art on Thursday and Friday nights.

Mr. Swartout draws his pictures in full color on a large drawing board. While he is drawing, a musical background of appropriate hymns is being presented. With the use of fluorescent crayons, black light and other devices he secures some of the most magnificent and mysterious effects imaginable.

He really draws two pictures at the same time—the first forms the setting, and then as he finishes, he paints the picture with light causing it to change—then as a final climax, he turns on the black light and this causes the original picture to fade out and the second picture, which was drawn with invisible crayons, to appear. These pictures are different—they are enlightening—they illustrate great hymns and Bible truths in a way that can never be forgotten.

CURRICULUM ADMINISTRATIVE

1. Baptist Training Union Manual
2. Publicity and Art
3. Recreation Course
4. Eight Point Record System
5. Advanced Intermediate Leadership
6. Beginner Intermediate Leadership
7. Advanced Junior Leadership
8. Beginner Junior Leadership
9. Nursery Leadership
10. Beginner Leadership
11. Primary Leadership
12. Story Hour Children

ADULTS

1. Adult Manual
2. Growing a Church
3. Honoring the Deaconship
4. The Spade and The Scriptures
5. Building a Christian Home
6. More Than Money
7. Co-operating Southern Baptists
8. Baptist Distinctives

YOUNG PEOPLE

1. Young Peoples Administration
2. Fields of Service in the Church
3. What We Believe
4. Our Bible
5. Soul Winning Doctrines
6. Investments in Christian Living

INTERMEDIATES

1. Intermediate Manual
2. Not Your Own
3. Shining Like the Stars
4. Pilgrim's Progress
5. Growing in Bible Knowledge
6. A Faith to Live By

JUNIORS

1. Junior Manual 9-10 Year
2. Junior Manual 11-12 Year
3. Junior Baptist
4. Living for Jesus
5. My Family and I
6. This is My Bible
7. Bible Heroes
8. Trailmakers in Other Lands
9. They All Began to Sing

STORY HOUR

Nursery, Beginner, Primary

FACULTY

- Mr. Emmett Golden, Nashville
Mrs. Jack Miller, First, Mr. Codie D. Bell, McLean, and Mr. N. R. Swartout, Chicago
Mr. Orelle Ledbetter, Union Avenue
Mr. Charles L. Norton, State T. U. Secretary
Mrs. Genter Stephens, Nashville
Mrs. Hattie Potts Rodgers, Knoxville
Miss Roxie Jacobs, Nashville
Miss Mary Jane Payne, Chattanooga
Mrs. L. H. Johnson, Highland Heights
Mrs. Jesse Meek, Jackson, Tenn.
Mrs. Emmett Golden, Nashville
Mrs. M. F. Hamlin, Bellevue
Miss Helen Gardner, Bellevue
Rev. D. M. Renick, LaBelle
Mr. Warren Cooper, Bellevue
Dr. Selwyn Smith, McLean
Rev. T. J. Tichenor, 7th Street
Dr. Ralph W. Moore, Supt. of City Missions
Rev. W. O. Love, Trinity
Dr. S. A. Murphy, Highland Heights
Mr. Maines Rawls, Southwide Y. P. Director
Mr. A. Donald Anthony, Union Avenue
Rev. J. E. Tanksley, Bartlett
Miss Elizabeth Casbolt, McLean
Dr. Mark Harris, Speedway Terrace
Miss Mary Anderson, Nashville
Mrs. Leroy Leggett, Highland Heights
Rev. Bob G. Rochelle, Parkway
Mr. Harold Mincey, First
Mr. E. S. Tucker, Union Avenue
Rev. J. E. Williams, Park Avenue
Mrs. A. C. Bennett, Bellevue
Mr. and Mrs. Lee E. Stokes, LaBelle
Mr. Jack Brashear, Kennedy
Rev. L. S. Sedberry, Leewood
Rev. Carol Curtis, Wells Station Mission
Mrs. A. E. Elmore, Bellevue
Mrs. Bob Smith, Sylvan Heights
Mrs. R. W. Jordan, Temple
Mrs. A. B. Coleman, Highland Heights
Mrs. Bob G. Rochelle, Parkway
Mrs. L. H. Johnson, Associational Story Hour Leader, Director

Woman's Missionary Union

149 SIXTH AVE., NORTH, NASHVILLE 3, TENNESSEE

MRS. SAM HOLLOWAY
President

MISS NELLIE TALLANT
Young People's Secretary



MISS MARY NORTINGTON
Executive Secretary-Treasurer

MRS. DOUGLAS GINN
Office Secretary

Department of Student Work

ROGERS M. SMITH, Secretary

MARJORIE HOWARD, Office Secretary

Mrs. Robert Logan Dies

We are sorry to announce the death of Mrs. Robert Logan who served as missionary to Argentina for many years. Mrs. Logan was the mother of Victoria who served as young people's leader of Tennessee for several years. She has lived with Victoria now Mrs. James Laws of Bristol, Virginia since her retirement a number of years ago.

Mrs. Logan also leaves two daughters, Misses Kathleen and Dorothy Logan who live in South America. A son, Dr. Albert Logan lives in Michigan.

Miss Bruce Returning September 6

Miss Margaret Bruce, W.M.U. young people's secretary writes back enthusiastically from the Baptist World Youth Congress to which she went as guest of Woman's Missionary Union.

At the meeting in Stockholm, 1300 delegates were registered from twenty-five different countries. It was inspiring to hear the stories of valiant Christian witnessing in the midst of persecution and obstacles. On one evening the delegates were invited into the homes of Swedish Baptists. One evening they were given a demonstration of Swedish Baptist youth work among Juniors and Intermediates.

Miss Bruce spoke to the Congress on our denomination's plans for training young people.

After traveling briefly on the continent, she sails on August 22 for New York.

Mrs. Creasman to Be Stewardship Representative



Everyone is rejoiced that Mrs. C. D. Creasman has accepted responsibility as Stewardship Representative with Woman's Missionary Union. She will guide in the plans for helping our constituency to its goal on Every Baptist a Tither.

She has already written the 1950 Junior materials for their program each month on stewardship of possessions, and she has secured authors for the WMS—YWA leaflet, and for the Sunbeam Band materials also.

Mrs. Creasman is well known to Southern Baptist audiences and will be welcomed to camps, assemblies, district and state meetings. She served as WMU president of Tenn. seven years.

Hold On to Your Dollar!

How? Yes, you can! Invest in missionary magazines and hold twelve copies for every dollar you send to Woman's Missionary Union. 1111 Comer Building, Birmingham 3, Alabama, for either

Royal Service for women

The Window of YWA for young women

Ambassador Life for boys

World Comrades for girls and children

You get your full dollar's worth in a subscription to either one of the four—Which ones do you need now?

THURSDAY, SEPTEMBER 8, 1949

YOUTH REVIVALS

Jacksboro Revival

Rev. M. W. Bodlien, pastor of the Jacksboro Baptist Church, Jacksboro, Tennessee, sent the following letter to Mr. Udell Smith, student secretary at the University of Tennessee, Knoxville, concerning the Youth Revival held in his church.

Dear Friend:

Just a word to say many thanks once again for the wonderful service you rendered in Jesus Name for our church and community. It was indeed a privilege to have you all and we hope the Lord will lead you to come our way again. Drop in to worship with us when you can for the latch string to the door of our church, homes, and hearts is on the outside.

The total results of the meeting were as follows:

Rededications	27
Dedications for full-time service	4
Accepting Christ	14
Additions by baptism	9

We are truly grateful to the Lord for the wonderful blessing and the the Spirit that has been so beautifully revived in our church.

Last night the house was packed even to bringing in extra chairs (that is for the main auditorium more than 200 present).

Roger gave his testimony and sang a special number with it and it was most impressive. The Youth Choir sang and we had to add extra chairs for them, so you see the revival is not over but just begun. The young people are going to conduct prayer services at least twice a month in the homes of the unchurched and lost.

Yours in Christ.

M. W. Bodlien

City-Wide Youth Revival, Elizabethton, Tenn.

Ray McCloud was the speaker for this meeting. The services were held in the auditorium of the First Baptist Church each night. Each morning there was an average attendance of 75 attending the breakfast and devotions.

During the first few nights of the revival 25 decisions were made. Despite two straight rainy nights the attendance was excellent. One of the great joys of the meeting came when a mother was saved, one with whom friends had been working for several months.

Udell Smith, Student Secretary

University of Tennessee

STATE
BAPTIST STUDENT CONVENTION
October 21-23
BELLEVUE BAPTIST CHURCH
Memphis

Treasurer's Report For The Third Quarter

Convention Year 1948-1849

The following report includes receipts for the period November 1, 1948 through July 31, 1949. The report groups churches in their associations and reports their gifts in three columns: Cooperative Program, Designated and Foundation. All undesignated gifts are classified as Cooperative Program gifts. Designated gifts are classified either as Foundation gifts or designated for other objects not promoted by the Foundation. The Foundation gifts are gifts received from private or corporate capital and not from church collections. They are shown here in order that churches may receive credit for the gifts made by their members to any religious or charitable cause.

In checking these figures with your records please bear in mind that contributions made prior to November 1, 1948, but which did not reach us until that date are included here, and that contributions made prior to August 1, 1949 but which did not reach our office before that date are not included here. They will be included in the next report.

Cooperative Program receipts for the nine months period from November 1, 1948 through July 31, 1949, amounted to \$976,298.85 as compared with \$929,170.88 which is a gain of \$47,127.97 over the same period last year. Total contributions for all causes for the period amounted to \$1,416,893.45.

Chas. W. Pope, Treasurer
Tennessee Baptist Convention

	Cooperative Program	Designated and Reported	Founda- tion
BEECH RIVER			
Bath Springs	.67		
Beacon Mission	4.04		
Bear Creek	40.97		29.00
Bible Hill		9.60	
Bunch Chapel		11.75	
Central Point Mission	2.16		
Darden		21.69	
Decaturville	25.00	4.35	
Friendship		22.15	
Hopewell			4.00
Lexington, First	1,060.00	694.15	275.00
Mt. Zion	380.00	15.37	
New Fellowship	7.60		
New Hope		20.15	
New Prospect		16.43	
Old Union			12.50
Parsons	1,608.31	285.43	330.50
Pine Grove	31.19	5.32	
Rock Hill	70.78	14.84	8.13
Saltillo		1.33	
Sardis		6.97	24.00
Sardis Ridge	3.03		10.00
Scotts Hill	25.00		
Toms Creek		14.00	
Union	111.37	91.76	42.00
Wildersville	4.00	31.25	28.64
Association	1.50	28.63	

	Cooperative Program	Designated and Reported	Founda- tion
BEULAH			
Aldredge		30.00	
Bethel	30.00	25.00	
Beulah	139.48	253.15	99.65
Burnetts Chapel	1.50		
Cottonwood Grove		20.00	
Cypress Creek	55.88	16.00	
Fairview		15.00	
Gibbs		32.00	
Hathaway	60.00	25.00	
Hornbeak		29.95	26.21
Johnson Grove	131.00	200.00	
McConnell	215.20	103.46	128.14
Macedonia	215.81	117.89	38.00
Martin, First	1,800.00	1,306.88	276.36
Mt. Moriah	49.38		
Mt. Olive	118.63	97.05	
Mt. Pelia	206.94	149.71	29.25
New Concord	45.00	30.00	
New Home	2.50	42.80	5.00
New Salem	214.28	426.15	63.48
Obion	96.86	284.74	50.00
Pleasant Grove	10.00	65.00	
Pleasant Hill No. 1		42.12	
Pleasant Hill No. 2		30.00	
Reelfoot	90.00	66.86	100.00
Ridgely	958.08	104.00	306.52
Sharon	42.37	62.87	
South Fulton	120.00	113.00	5.00
Tiptonville	262.86	61.85	76.00
Troy	77.50	30.48	15.00
Union City	4,625.00	1,414.98	729.48
Walnut Log		11.35	
Woodland Mills	352.06	235.04	80.23
Wynnborg	30.65	92.05	110.00
Association		26.76	32.36

	Cooperative Program	Designated and Reported	Founda- tion
BIG EMORY			
Beech Park	6.26	50.00	
Bethel		18.00	
Big Emory	37.71	27.00	
Caney Ford	43.00	72.00	
Cardiff		29.85	
Chestnut Mission	11.39		
Childs Memo.	160.26	20.00	
Clax Gap	5.47	27.96	
Crab Orchard	5.20	21.57	
Creston	5.00		
Crossville	884.25	311.67	39.60
Emory Gap	7.03		
Emory Heights	50.00	75.00	
Emory River	55.41		

	Cooperative Program	Designated and Reported	Founda- tion
BIG HATCHIE			
Eureka	185.82	85.36	
Haileys Grove		59.00	
Kingston	651.17	239.00	
Lancing		10.00	
Liberty	294.39	69.33	
Middle Creek	49.50	31.02	
Mossey Grove		28.00	
Mt. Teman	7.50	2.50	
North Rockwood	17.00		
Oakdale	900.00	70.00	
Oak Hill	49.01	62.03	
Orchard View		18.10	
Petros	177.39	145.36	5.00
Pine Orchard		10.00	
Piney	182.30		
Pleasant Grove	45.00		
Pond Grove	5.60	30.78	
Riggs	123.34	50.00	
Riverside	330.08	85.79	
Rockwood	1,433.92	247.41	
Slate Springs		9.52	
South Harriman	492.42	194.86	
Sugar Grove	2.50	7.00	
Sunbright	10.94		
Trenton St.	4,566.15	490.35	60.67
Union		60.00	
Walnut Hill	837.07	262.47	
Wartburg	126.00	91.53	
Westel	4.87	45.52	
White Oak	10.20	42.57	
Whites Creek	27.00	25.00	
Association		15.70	

	Cooperative Program	Designated and Reported	Founda- tion
BIG HATCHIE			
Allen	123.15	137.20	
Antloch	26.62	20.00	
Brighton	1,616.88	329.79	252.70
Brownsville	3,578.95	1,252.90	796.49
Charleston	145.03	8.00	
Covington	4,914.06	638.61	600.21
Elim		25.00	
Fellowship		8.49	
Fulton	3.00		

Bartlett Church, Memphis, Celebrates Centennial

While celebrating its Centennial Year, Bartlett Church, Memphis, is getting in the midst of a building program designed to meet the need of its growing congregation. The present auditorium will be enlarged to a capacity of about 550.

Of Gothic design, the exterior will have a cut stone trim around all openings and a massive stained glass window in the balcony. The Gothic feature of the exterior will be repeated in the openings of the choir loft and baptistry.

One hundred years old, the church has a quaint and colorful history, dating back to the time when slaves were members following the Civil War. Slaves from the Bartlett Church later petitioned for their letters and organized what is now First Baptist Church (Colored) in Bartlett.

	Cooperative Program	Designated and Reported	Founda- tion
Garland	439.77	130.37	
Grace	10.36	11.01	50.00
Harmony	451.23	264.96	18.00
Henning	161.50	288.09	125.91
Holly Grove	644.48	96.20	
Keeling		12.50	
Liberty	1,016.12	465.50	205.00
McKenzie Chapel	50.00		
Mt. Lebanon	17.00	55.52	25.00
Oak Grove	529.19	162.21	40.81
Pleasant Grove	163.52	67.95	39.80
Ripley	2,416.02	2,251.18	575.00
Salem	7.75	6.35	
Smyrna	74.55		
Stanton	148.97	216.69	50.00
Walnut Grove	46.00	63.40	10.25
Woodland	274.11		134.23
Woodlawn	27.24	164.00	
Zion	75.00	25.00	
Association		101.28	

BLED SOE			
Bledsoe Creek	44.04	50.00	10.00
Cedar Grove Mission	9.40		
Chestnut Grove	114.52	19.11	
Corum Hill	74.00		51.00
Cottontown	26.57	29.35	
Dixon Creek		70.00	112.98
Fountain Head	60.62	27.41	2.00
Friendship	72.75	44.30	48.89
Gallatin	1,200.00	319.05	5.00
Hartsville	1,054.84	312.98	454.42
Hillsdale	14.10		
Hopewell	123.54	122.70	69.50
Mitchellville	111.13	14.17	168.57
New Hope	33.05	27.25	
Portland	1,655.35	363.46	
Station Camp	4.07	.50	
Westmoreland	9.31	1.54	
Zion			23.98
Association		32.73	

CAMPBELL			
Avenue	228.83	35.00	
Bear Wallow		82.00	
Big Creek Gap		28.00	
Caryville	101.00	166.88	
Cedar Hill	22.00	63.70	
Chaska		8.70	
Clear Branch		24.50	
Cumberland View		30.31	
Demory		16.00	
Elm Grove	5.00		
Ford Town		17.00	
Glade Springs		10.45	
Grantsboro		13.50	
Jacksboro	524.01	127.37	57.97
LaFollette	2,612.57	655.64	25.00
Lakeview	54.48	57.70	
Little Cove Creek	15.00	39.19	
Macedonia		26.19	
Morley	215.58	52.12	
Mt. Paron		45.00	
North Cumberland Mission	110.87	8.21	
Newcomb	40.00		
Oak Grove	20.10		
Pleasant Grove		39.49	
Round Rock		69.68	
Vaspar	20.00	43.33	
Westbourne	10.00	5.00	
West La Follette	57.00	64.00	
White Oak		11.50	
Whitman	10.50	5.50	
Association		15.00	

Women in those days were not permitted to speak in the business sessions of the church, but had to communicate their views through their husbands. Very strict disciplinary rules were observed; for example, if any male member absented himself from services he would be "waited upon" as is evidenced by the yellowed pages of well preserved minutes.

C. G. Gowen, perhaps the oldest living member of the church, is writing of the early struggles, later progress, and present prosperity of the church in a book which will soon come from the press. Mr. Gowen's grandfather was one of the early pastors of the church.

The Church has been served by thirty-eight pastors, some who bear familiar and beloved names among all of us. The present pastor is J. E. Tanksley who was called to the Church on November 12, 1944. Under his leadership the present program of building and expansion was launched. There have been more than 350 additions to the Church since he became pastor and all other phases of the work have grown proportionately.

	Cooperative Program	Designated and Reported	Founda- tion
ENON			
Red Boiling Springs Union	23.89	5.00	7.00
FAYETTE			
Feathers Chapel		6.00	
Galloway	40.00	41.25	22.00
Hickory Grove		22.00	
Kirk	10.50		
Liberty	3.00	2.00	
Morris Memo.	372.01	259.75	53.00
Mt. Moriah	153.31	137.38	
Oak Grove		10.00	
Rossville	321.45	284.66	83.05
Somerville	461.94	179.85	241.49
Williston	217.65	129.96	11.00
Association		17.59	24.08
GIBSON			
Antioch	797.65	163.96	223.90
Beech Grove	114.66	6.00	26.25
Bethel "H"	110.96	79.44	
Bethel "Y"	117.06	56.74	
Bethlehem	333.63		
Bethpage	150.00	105.81	25.00
Bradford	773.82	213.03	13.27
Center	307.44	68.00	
Chapel Hill	161.20	84.95	5.00
China Grove	132.35	299.14	62.25
Clear Creek	185.05	124.32	
Dyer	1,344.11	147.62	225.82
Eldad	400.00	106.06	
Fruitland	40.00	53.90	25.00
Gibson	769.97	258.21	
Hickory Grove	543.53	110.66	
Humboldt	5,132.19	709.46	1,599.48
Idlewild	52.69		30.50
Kenton	310.99	422.77	150.40
Laneview "T"	107.31	45.34	15.33
Lathams Chapel		83.00	
Lavinia	49.48	70.61	50.00
Medina	1,501.01	316.80	1.00
Midway	30.73	16.26	
Milan	3,225.01	833.67	921.11
Mt. Pleasant	39.38	26.50	
New Bethlehem	184.00	86.97	50.00
New Hope	100.00	77.37	25.00
Northern	30.00	33.82	25.00
Oak Grove	53.71	47.87	50.00
Oakwood	45.00	82.50	25.00
Poplar Grove		76.10	66.67
Poplar Springs	61.80		
Rutherford	464.20	186.67	350.00
Salem	574.07	79.47	121.00
Trenton	500.00	1,083.87	1,705.00
Walnut Grove	221.86	65.59	
White Hall	185.20	88.53	100.00
Association		25.00	50.00
GILES			
Bradshaw		4.00	17.50
Hannah	6.95	16.00	
Liberty Hill		17.70	
Lynnville		6.84	4.05
Minor Hill	168.75	82.03	36.26
New Hope	138.75	110.19	43.50
New Zion		34.33	
Oak Grove		6.30	1.60
Pulaski	705.58	242.06	149.65
Rock Springs	20.00	15.00	5.21
Scotts Hill	72.71	25.68	40.35
Shores		18.88	
Thompsons	46.20	18.49	25.00
Union Hill		14.18	
Union Valley		12.20	29.00
Wheelerton		12.33	
Association		19.30	15.00
GRAINGER			
Avondale	18.50		
Barnards Grove	71.00	52.20	
Bean Station	25.00	49.05	
Block Springs	8.74	21.21	
Blue Springs	130.55	94.31	
Bridgeport		15.00	
Buffalo	204.00	109.60	
Byerleys		20.00	
Central Point	21.45	36.79	
Elm Springs	2.00	18.50	
Fairview		9.79	
Head of Richland	14.06	10.76	
Helton Springs	68.83	20.90	
Indian Ridge	120.63	78.17	
Little Valley	20.00	21.63	
Locust Grove	4.67	94.50	
Mitchell Springs		48.05	
Mouth of Richland	981.10	468.71	
Narrow Valley	149.12	45.42	
New Blackwells		58.25	
New Corinth		26.66	
New Prospect		33.52	
Noeton	5.00	6.00	
Oak Grove		19.39	
Oakland	77.25	68.74	5.00
Powder Springs	33.64	45.26	
Puncheon Camp	52.00	47.00	
Red House		10.00	
Roberts Chapel	15.00		
Rutledge	550.33	70.21	
Sunrise	70.86	34.75	
Thorn Hill Mission	4.00		
Washburn	88.22	76.53	
Association		12.95	

	Cooperative Program	Designated and Reported	Founda- tion
HARDEMAN			
Bethlehem			5.50
Bolivar	2,012.57	655.15	73.50
Ebenezer	12.60	60.81	10.85
Essary Springs	3.55	7.53	
Grand Junction	984.50	367.87	15.00
Hatchie		37.00	
Hickory Valley	20.47	58.60	22.50
Hornsby		150.00	
Middleburg	89.49	71.58	9.25
Middleton	80.00	52.13	11.00
Midway	5.00		
New Union	161.18	14.80	75.00
Parrans	47.39	83.05	
Pocahontas	6.93	16.00	
Porters Creek		6.00	9.55
Rocky Springs	25.00		
Saulsbury	230.97	54.41	
Silerton	96.71	20.27	
Toone	293.00	105.23	50.15
West Memo.	5.05		
Whiteville	679.63	389.69	248.71
Association			36.00
HIWASSEE			
Chapmans Grove		20.00	
Hopewell		57.00	
Laurel Bluff	2.00		
Maple Grove	1.50		
Old Friendship		23.00	
Paint Rock	1.85	51.60	
Pisgah	13.65		
Pleasant Hill	1.25		
Salem	2.10		
Shiloh	45.33	2.00	
Ten Mile	7.64		
HOLSTON			
Antloch	383.15	85.57	5.00
Asbury	51.03	6.37	
Baileytown	25.00	60.00	
Bethany	97.66	32.25	
Bethel	79.03	50.00	
Beulah	125.00	190.14	
Bloomington		20.80	
Blountville	57.09	72.46	5.00
Bluff City	524.80	83.64	
Bluff City, First	577.21	213.86	10.00
Boones Creek	30.00	23.00	
Buffalo Ridge		100.00	
Calvary "B"	2,487.45	1,200.99	
Calvary, "E"	1,025.00	265.42	25.00
Calvary, "K"	1,089.00	200.93	
Cedar Grove	80.00	11.00	38.00
Cherokee	103.00	203.35	
Cherry Grove	5.00	14.78	
Chinquapin	577.50	10.00	
Clear Branch	77.45	17.52	
Coffee Ridge	4.00	4.00	
Double Springs	195.41	36.18	
East Side	13.96		
Enon		54.66	
Enterprise Union		10.00	
Erwin, First	5,099.30	2,155.38	36.50
Erwin, Ninth St.	773.52	155.15	
Fall Branch	140.00	69.40	32.50
Fall Creek	71.91	92.45	
Fall St. Chapel	2.00	2.85	
Flag Pond	106.48	24.14	
Fordtown	87.50	162.93	40.00
Fort Robinson	100.00		10.00
Glenwood	921.00	145.94	
Gravel Hill		6.00	
Greeneville		17.33	
Greeneville, First	833.18	474.95	60.50
Greeneville, Second	24.00	51.00	
Harmony	53.33	67.35	
Higgins		2.00	
Holston	25.00	54.25	
Holston Valley	55.00	55.35	5.00
Hulen Ave. Mission	49.19		
Johnson City, Central	8,500.00	5,050.23	166.50
Jonesboro, First	2,023.07	341.29	
Jonesboro, Second		20.75	
Kingsport, First	8,006.11	1,477.41	342.60
Litzmanor	239.82	80.76	
Lovelace		10.35	
Lynn Garden	510.00	453.13	203.99
Midway	75.50	11.00	
Mill Creek		28.46	
Mountain View	62.19	30.02	
Mt. Holston		25.00	
Mt. Zion	5.00	11.05	
Muddy Creek	13.50	25.28	
New Glenwood	5.25	1.50	
New Hope	25.00		
New Lebanon	66.35	37.20	
New Salem	12.00		
New Victory	147.53	123.50	
Oakdale	30.00		
Oak Grove	24.20		
Oak Hill	172.18	200.22	
Philadelphia	100.42	55.39	
Pinecrest	454.28	99.20	5.97
Piney Flats		55.99	
Pleasant Grove	10.00	66.00	
Roan Hill	248.61	11.25	
Shady Grove		38.75	
Shallow Ford	86.00	57.00	
Snow Chapel	73.60	69.32	5.00
Solomons		5.00	
Southside	16.00	124.93	
Springdale		14.00	
State Line	211.00	35.49	12.15

	Cooperative Program	Designated and Reported	Founda- tion
Sullivan	239.10	138.35	
Sulphur Springs	515.80	58.36	
Sumersville		12.12	
Sunnyside		64.80	
Telford	85.65	101.40	
Temple	1,356.46	156.81	
Tennessee Ave.	94.50	87.60	
Unaka	627.46	385.99	
Unicoi	10.00	65.50	
Union	140.00	29.42	
Virginia Ave.	738.30	79.51	25.63
Walkers Fork		16.65	
Westerley Hgts.	28.37		
Westview	20.00	52.40	
Woodlawn	568.61	135.07	
Association		93.05	36.89
HOLSTON VALLEY			
Beech Creek	4.06	13.50	
Beech Grove		10.00	
Bethel	4.00		
Caney Fork		16.00	
Cave Springs		23.25	
Choptack	12.00	75.00	
Christian Bend	5.50		
Church Hill		65.21	
Compromise	40.65		
Fairview	24.00	11.00	
Gills Chapel	178.25	69.00	
Henards Chapel	67.00	108.80	
Hickory Cove	20.00	107.75	
Howes	3.93		
Independence			2.00
Lone Oak		6.00	
Longs Bend		5.50	
Looneys Chapel		40.00	
Maple Hill	5.00	25.00	
McClouds	12.16	25.00	
McPheeters Bend	679.90	154.63	
Mooresburg	225.00	38.67	
Morrisetts Chapel	45.00		
New Salem	10.00		
Oak Grove	5.00	22.34	
Persia	32.50	47.02	32.20
Piney Grove	14.30		
Plum Grove	4.80	10.00	
Prices Grove	2.25	6.00	
Providence	15.60	28.40	
Rogersville	2,328.34	628.69	25.00
Shady Grove	50.00		
Surgoinsville	235.00	234.32	53.38
Tunnell Hill	13.06	26.44	
Association		15.00	25.00
INDIAN CREEK			
Bethel	6.00	9.50	
Bethlehem	9.24	81.13	
Collinwood	43.63	16.00	
Friendship		.70	
Green River	8.65	62.55	
Hopewell		1.75	
Leatherwood	8.10	2.50	11.13
Liberty		23.75	
Lutts	125.40	41.13	15.00
New Harmony	35.89	11.68	
Olive Hill	31.86	17.15	2.75
Philadelphia	124.08	43.25	
Ray School Mission		3.56	
Savannah	90.00	51.11	5.00
Sharon	3.00	1.00	
Southside Mission		5.00	
Turkey Creek	36.79	42.85	
Waynesboro	219.25	226.18	
Association		51.90	
JEFFERSON			
Beaver Creek	38.10	15.25	
Buffalo Grove	183.67	47.27	10.85
Dandridge	309.01	310.16	103.65
Dumplin	827.13	63.69	116.47
Flat Gap	122.08	54.15	15.48
French Broad	75.00	80.00	
Good Hope		25.00	
Jefferson City, First	9,795.01	2,178.09	82.18
Mansfield		5.00	
Mill Springs	374.85		
Mountain View	13.00	32.00	
Nances Grove	208.16	168.48	
New Market	1,121.39	128.70	
Nina	27.95	5.00	
Northside	108.68	119.18	
Piedmont	747.84	60.99	25.89
Pleasant Grove "H"		41.40	
Pleasant Grove "P"	66.38	33.15	
Rocky Valley		40.16	
Talbott	89.06	84.89	
White Pine	762.25	316.59	109.00
Association		88.40	
JUDSON			
Charlotte	105.79	.50	5.16
Fairview	4.51	16.00	
Gum Springs		73.42	

	Cooperative Program	Designated and Reported	Foun- dation
KNOX			
Alice Bell	72.46	59.65	26.20
Arlington	5,048.13	1,516.54	196.50
Ball Camp	36.00	25.00	13.00
Beaumont Ave.	768.84		
Beaver Dam	578.27	102.50	
Bell Ave.	6,867.47	610.75	
Belmont Hgts.	408.59	205.65	21.25
Black Oak	106.11	14.25	21.30
Bon View	3.00	21.79	
Broadway	7,500.00	2,681.23	3,137.00
Calvary	1,037.46	106.92	1.00
Central, Bearden	769.85	420.73	
Central, Fountain City	10,639.67	2,197.05	715.55
Churchwell Ave.		80.97	
City View		38.05	7.53
Clear Springs	130.65	52.00	
Corryton	823.18	259.40	
Crichton	262.70	98.60	
Deaderick Ave.	705.58	73.75	
Ebenezer		35.00	
Elm Street	148.83	18.43	51.02
Euclid Ave.	232.29	190.38	100.00
Fair Havens	36.98		
Fifth Ave.	14,120.63	5,820.63	594.12
Knoxville, First	40,093.31	8,722.00	2,259.88
Fort Sanders	392.51	81.35	
Fountain City, First	1,446.28	156.62	155.00
Gallahers	324.00	58.50	
Gayland Hgts.		82.00	
Gillespie Ave.	514.50	374.20	25.00
Glenwood	700.00	66.85	
Grace	180.00	67.36	
Grandview Mission		10.65	
Grove City	394.36	20.00	
Grove Hgts.		15.00	
Grove Hill	25.00	113.63	
Highland	287.43	65.35	
Holston	50.00	78.00	
House Mountain		68.84	
Immanuel	1,509.86	203.26	
Inskip	2,069.23	55.57	
Island Home	2,036.18	598.08	110.91
John Sevier	206.07	90.39	19.80
Lincoln Park	8,450.61	1,312.39	135.00
Little Flat Creek	43.02	51.77	
Lonsdale	3,522.18	325.85	221.00
Loveland		12.00	
Lyons Creek	290.84	55.25	
Marble City	93.00	35.25	5.00
Marbledale	22.83	45.00	
Mars Hill		25.95	
Mascot	201.54	131.21	49.20
McCalla Ave.	6,501.92	512.64	27.20
Meridian	319.97	190.75	21.32
Middlebrook Hgts.	.75	.25	
Morgan	3.82	3.09	
Mt. Carmel	68.49	64.79	10.00
Mt. Harmony	27.71	150.41	36.25
Mt. Olive	1,000.00	461.57	159.00
Mt. View	492.95	12.00	
North Hills	153.21		
North Knoxville		69.15	
Northside		25.00	
Norwood		10.00	
Oak Hill	44.17	50.61	
Oakwood	2,809.58	359.33	
Oglewood	31.63		
Park City	289.13	24.25	
Park Lane	40.00	35.86	25.00
Piney Grove		42.00	
Powell	345.62	174.29	13.88
Riverdale	1,132.94	41.79	50.00
Riverview		41.21	
Rocky Hill	20.10	59.18	
Roseberry	296.95	117.14	
Salem	451.52	65.00	13.50
Sevier Hgts.	668.20	215.66	
Sharon	201.00	92.60	
Smith Grove	35.25	7.00	6.00
Smithwood	3,506.39	549.09	54.73
South Knoxville	5,410.37	617.00	239.69
Stony Point	47.14		
Straw Plains	671.14	90.63	
Tennessee Ave.	714.60	2.00	
Third Creek	123.50	148.25	
Thorn Grove	77.78	20.00	10.00
Three Points	5.00		
Union		100.00	
Unity	65.25	33.71	
Valley Grove		97.80	
Washington Ave.	263.80	79.86	
Washington Pike	1,399.94	124.63	41.75
West End	169.80	107.65	
West Lonsdale	45.00	20.03	
Association		630.97	
LAWRENCE			
Blooming Grove	1.40	25.00	
Bonnertown	73.89	37.00	50.00
Ethridge	46.05	46.35	66.75
Eva's Chapel		8.50	5.00
Five Points	70.84	15.00	13.75
Gum Springs	28.00	15.00	
Iron City	64.00	120.80	
Lawrenceburg	1,351.33	246.76	322.80
Leoma	40.25	43.38	
Liberty Grove	54.51	11.55	
Lone Star		2.00	
Loretta	11.00	68.82	32.00
Macedonia			10.00
Mars Hill	46.70		18.00
Mt. Horeb	46.11	108.00	100.00
Oak Hill	6.15	6.31	
O K	50.00		
Park Grove		67.74	50.83

	Cooperative Program	Designated and Reported	Foun- dation
MAURY			
Ramah	1.57	19.25	28.05
Summertown	5.29	36.10	1.00
West Point	3.50	21.15	
Association		47.04	
McMINN			
Antioch	11.50	7.95	
Athens, First	10,996.86	1,537.26	1,652.00
Bellfonte	60.00	47.23	
Bethsadia		13.00	
Calhoun	68.85	7.75	
Calvary "D"	83.29	11.50	
Calvary "E"	20.88	21.90	
Calvary (McMahan)	167.84	51.50	
Center Point	2.06		
Charleston	85.00	70.65	
Clear Water	18.00	34.00	
Coghill	214.14	115.79	6.63
Cottonport	2.66	2.15	
Council		10.00	
Dixon Ave.	26.00	24.00	
Double Springs		22.00	
Eastanallee	3.25	64.50	
East Athens	936.38	94.53	
East Niota	12.00	25.26	
East View	1.77	10.00	
Englewood	1,195.19	177.41	57.04
Etowah, First	2,600.00	726.26	483.60
Goodfield	287.59	41.19	
Good Hope	15.50		
Good Springs	21.66		
Gum Springs	3.31		
Hiwassee	1.30		
Idlewild	21.53	5.00	
Lakeview		7.92	
Mt. Harmony No. 1		41.70	
Mt. Pisgah	1.25		
New Bethel	4.00		
New Friendship	132.15	123.50	
New Hope	3.00		
New Zion	2.30	14.50	
Niota, First	475.11	294.89	35.00
North Athens	170.32	69.43	
North Etowah	51.00	61.05	
Oak Grove	3.63	11.00	
Pond Hill		50.00	
Riceville	52.50	41.00	
Rocky Mount		5.00	
Rogers Creek	10.00		
Sanford	4.47	16.05	
Shiloh		50.25	
Short Creek	1.40	2.00	
South Liberty	26.08	14.55	
Union Grove No. 1	3.36	6.00	
Union Grove No. 2	52.20	62.89	
Union McMinn		17.56	
Valley View	14.88	12.75	
Walnut Grove	6.00		
West View	30.00		
Wildwood	30.00	52.63	
Association		5.00	
McNAIRY			
Adamsville		52.05	65.25
Bethel Springs	119.14	28.20	50.00
Bethel		21.00	
Chewalla		20.00	25.00
Clear Creek	101.75		
Good Hope		17.00	
Gravel Hill	257.71	110.92	
Mt. Gilcud	279.84		
Mt. Zion		6.25	
Olive Hill	35.00	5.00	
Pleasant Site	9.41	2.00	20.00
Ramer		44.35	
Selmer	1,100.00	159.25	10.45
West Shiloh	150.00	99.59	
Association		9.50	25.00
MADISON			
Ararat	323.46	39.46	63.07
Beech Bluff	17.50	14.25	
Beech Grove	20.62	61.03	20.00
Bemis	2,925.00	190.52	589.47
Bethel	3.35	42.70	
Bible Grove	20.14		
Clover Creek	246.31	144.46	111.50
Cotton Grove	135.00	72.01	25.00
East Laurel	169.80	46.43	
Enville		38.50	
Friendship	5.00	39.14	
Henderson	479.33	282.79	79.00
Hill Crest Circle	10.11	7.42	3.50
Jackson, Calvary	3,600.00	1,832.03	376.85
Jackson, First	9,665.06	4,151.85	7,207.58
Jackson, North	808.29	85.47	102.60
Jackson, Royal St.	540.37	93.94	35.85
Jackson, West	4,922.87	1,224.18	1,437.86
Liberty Grove	146.00	41.05	
Madison	163.36	71.60	19.94
Malesus	354.34	88.59	16.03
Maple Springs	355.92	241.74	158.25
Mercer	438.34	139.15	94.60
Mitchells Chapel		10.16	
Oakfield	78.65	41.05	
Parkburg	166.92	38.16	50.00
Parkview	801.94	254.11	51.00
Pinson	53.56	30.50	
Pleasant Hill	14.85		
Pleasant Plains	282.66	136.07	120.00
Poplar Corner	57.82	47.36	22.82
Poplar Heights	792.75	306.75	93.29
Spring Creek	139.74	84.77	190.00
Wards Grove	176.18	73.82	14.02
Westover	433.66	425.17	101.86
Association		64.18	158.09

	Cooperative Program	Designated and Reported	Foun- dation
MAURY			
Calvary		31.52	
Centerville	546.38	135.00	52.46
Columbia, First	2,014.90	476.58	897.83
Columbia, Second	154.26	207.39	10.95
Cross Roads	11.27	20.00	25.00
Culleoka			14.50
Friendship	75.62	67.35	84.42
Hohenwald	133.25	81.31	156.13
Knob Creek	98.28	26.05	75.00
Lawrence Grove		4.00	10.00
Liberty			19.00
Linden	5.00	63.52	43.60
Mt. Pleasant	640.03	449.88	290.19
Pine Grove	24.00		16.66
Rock Springs	36.50	12.65	10.00
Santa Fe	64.00	30.00	120.00
Theta	9.75	11.00	
Viola	6.20		
Wrigley	37.00		10.00
Association		48.99	25.00
MIDLAND			
Atkin	150.38	14.20	
Bells Camp Ground	16.54	58.15	
Bethany		25.00	
Bishopville	54.87	19.75	
Byrams Fork		15.25	
Calvary	192.88	30.55	
Cedar Grove	8.00	40.26	
Clear Springs	26.00	25.00	
Deep Springs		12.00	
Fairview	153.00	29.19	
Graveston	132.87		
Laurel Branch		50.00	
New Beverly		13.00	
New Hope		100.00	
Piney Grove		5.00	
Pleasant Hill	172.55	7.61	
Texas Valley		25.00	
Union	154.18	16.00	
MULBERRY GAP			
Beech Grove		3.59	
Big Hill		19.57	
Blackwater Union		7.00	
Cedar Flat	3.00		
Chinquepin	5.00		
Cobbs Chapel		8.40	
Dry Valley	.48		
Duck Creek		41.18	
Friendlies Chapel		2.55	
Friendship	2.00	5.47	
Gap Chapel		10.00	
Huberts Chapel	1.40		
Kyles Ford	14.30	14.00	
Liberty	39.12	156.48	
Mt. Pisgah	1.00		
Mulberry Gap		76.47	
New Life	9.60	5.00	
Oak Hill	5.50	1.50	
Pleasant Hill	35.00	37.55	
Prospect	8.00		
Sneedville	87.46	33.50	
Spruce Pine	5.20	11.00	
Stony Gap		23.35	
Trent Valley		217.00	
Valley View	18.00	21.00	
War Creek	12.17	22.18	

5,000 CHRISTIAN WORKERS WANTED

to sell Bibles, Testaments, good books, handsome Scripture mottoes, Scripture calendars, greeting cards. Good commission. Send for free catalog and price-list.

George W. Nobile, The Christian Co.
Dept. D, Pontiac Bldg., Chicago, 5, Ill.

CURLEY PRINTING CO.

Home of

THE BAPTIST PRESS

412 Demonbreum St.

Phone 4-5201

NASHVILLE, TENN.

	Cooperative Program	Designated and Reported	Founda- tion
NASHVILLE			
Antioch	153.75	117.57	186.93
Ashland City		29.46	10.00
Bakers Grove	234.89	90.38	88.50
Belmont Hgts.	23,998.55	4,417.22	8,942.26
Berryville	86.50	10.75	167.25
Bordeaux	82.30	63.09	145.25
Calvary	1,155.41	196.20	251.50
Centennial	13.25	46.32	120.60
Central	16.00	5.34	735.00
Dickson	14.70	133.63	50.00
Donelson	4,180.56	805.26	1,055.00
Eastland	7,104.45	900.59	2,527.61
Edgefield	2,860.94	662.90	420.82
Ewing	25.00	10.83	112.50
Fatherland St.	15.00	56.31	372.18
First, Nashville	34,259.63	5,346.08	17,954.15
Franklin	1,969.38	890.44	1,597.45
Freeland	282.74	29.50	
Goodlettsville	2,183.86	110.49	1,340.61
Grace	9,101.64	430.33	1,516.02
Grandview	965.05	167.71	1,393.45
Green Hill	123.22	184.69	581.20
Grubbs Memo.	289.79	32.50	
Harpeth Hgts.	225.00	156.13	1,310.58
Harsh Chapel	753.20	185.60	431.00
Hendersonville	170.00	48.70	
Hermitage	116.71	177.86	155.00
Immanuel	4,167.86	2,082.42	3,080.05
Inglewood	4,500.00	572.32	1,299.32
Ivey Chapel	465.60	97.40	10.30
Joelton	13.50	26.35	
Judson	9,971.31	1,184.28	2,216.45
Lockeland	5,804.44	750.58	3,201.75
Madison	3,660.81	527.00	2,260.50
Mill Creek	214.40	191.87	100.00
New Hope	390.17	104.06	
North Edgefield	297.32	88.50	66.00
North End	80.00	106.79	270.75
Old Hickory	6,669.50	271.56	1,228.50
Park Ave.	6,094.97	1,098.90	3,864.27
Radnor	723.07	293.68	348.48
Richland	194.93	92.16	310.51
Riverside	506.56	207.90	2.00
Rosedale		6.32	
Seventh	637.41	189.66	444.00
Shelby Avenue	1,502.30	272.94	2,747.76
Temple	675.04	45.10	
Tennessee Home	999.77	363.76	69.10
Third, Nashville	1,512.65	514.61	890.60
Una	463.71	86.77	110.00
Union Hill	1,267.49	51.10	295.00
West Nashville	33.50	35.81	
White Bluff	12.86		
Woodbine	92.75	136.01	67.55
Woodmont	9,632.31	639.31	4,834.50
Association	20.80	102.16	5,520.36

NEW DUCK RIVER			
Bell Buckle		48.07	6.04
Bethany Lane Mission			2.34
Charity	7.76	12.45	
Cornersville	163.55	109.76	
El Bethel	133.13	102.00	151.50
Fosterville		65.83	10.00
Hannahs Gap	146.58	73.69	50.00
Holts Corner	28.80	56.27	57.00
Hurricane			24.00
Lewisburg	2,759.80	671.73	1,567.40
Longview		10.25	
Mt. Lebanon	26.00	7.05	21.36
New Bethel	123.43	70.13	
New Hope	49.17	70.00	66.00
North Fork	66.25	34.20	21.83
Rover	155.92	130.11	312.26
Shelbyville	1,487.29	159.55	664.00
Shelbyville Mills	173.95	17.95	
Short Creek	41.14	70.05	102.75
Smyrna	73.50	32.80	
Wartrace	200.00	182.76	3.95
Association		10.00	

NEW RIVER			
Black Creek Cross Roads	1.00		
Community		10.00	
Huntsville	34.50	36.75	
Lone Mountain		10.00	
Low Gap	62.58	45.00	
Mill Branch		20.00	
Mountain View	28.65	6.60	
Mt. Pleasant		4.00	
New Haven	2.49	11.31	
New River	126.00	32.07	
Norma		16.37	
Oneida	704.60	185.88	21.50
Robbins	181.66	33.03	
Slick Rock		10.00	
Stockton Mission	5.93		
Vine St.	17.91		

NEW SALEM			
Brush Creek	230.48	179.20	106.50
Buena Vista		67.25	
Carthage	417.85	393.97	200.00
Hickman	144.65	124.66	120.80
Lancaster		13.04	19.69
Nash Grove		7.75	
New Home	72.00	61.65	
New Middleton	562.82	265.10	388.13
Peytons Creek	17.50	202.50	107.50
Plunketts		104.25	
Riddleton	51.50	45.90	15.50
Rome	36.80	98.01	82.56
South Carthage	10.00	15.50	
Association		46.30	

	Cooperative Program	Designated and Reported	Founda- tion
NOLICHUCKY			
Alpha		5.00	
Bear Creek		8.70	
Bethel	266.73	99.00	65.00
Beulah	119.70	112.65	6.76
Bibles Chapel	56.08	24.73	11.50
Brier Thicket	21.72	15.15	
Brown Springs	246.78	260.33	73.97
Bulls Gap	638.44	291.60	50.00
Calvary	213.70	107.00	
Calvue	3.63		
Catherine Nenny	63.00	45.26	5.00
Cedar Creek	23.40	25.81	8.43
Central		34.26	
Concord	149.63	64.11	7.25
Enterprise		16.15	
Fairview	314.56	101.40	44.05
Fernwood	3.42		
Grace	125.69	52.47	35.00
Holt		15.00	
Kidwells Ridge	76.74	25.00	
Leadvale		20.00	
Lebanon	109.62	15.18	
Macedonia	2.90	20.00	
Montvue	155.64	86.10	21.50
Morristown, First	3,700.00	2,737.84	36.00
Mountain Valley	2.44		
Mt. Zion	95.75	141.93	14.37
Phillippi	10.62		
Pleasant Ridge		13.00	
Pleasant View		10.01	
Robertsons	5.41	16.50	
Rocky Point	70.49	123.57	30.00
Roe Junction	1.11	13.60	
Russellville	141.99	313.27	7.50
Thankful	2.16	33.00	
Three Springs	1.46	10.00	
Warrensburg	302.00	99.32	37.81
Westview	20.00	57.47	
White Oak Grove	5.00	105.00	17.45
Whitesburg	86.98	262.73	28.72
Witts	317.18	190.19	11.61
Association		20.56	42.73

NORTHERN			
Carrs Branch		59.91	
Cedar Ford	76.50	133.15	
Clear Branch	154.00	62.00	
Hubbs Grove	4.70		
Lone Mountain	31.20	20.28	
Maynardville	21.00	92.72	
Warwick Chapel	7.51	77.24	
Association		9.74	

OCOEE			
Alton Park		25.50	
Apison	271.02	61.26	
Avondale	4,107.24	492.38	
Bartlebaugh	149.14	9.30	
Bethel	22.00	15.93	
Big Springs	1,392.00	237.08	
Birchwood	363.40	68.72	
Blue Springs	27.55	15.15	
Brainerd	7,527.93	849.74	
Brainerd Hill	415.05	41.25	
Calvary	166.45	124.11	100.00
Cameron Hill	10.28	5.00	
Candies Creek	50.00	66.00	
Cedar Hill	1,260.99	193.32	
Cedar Springs		22.00	
Central	2,871.40	1,873.77	
Chamberlain Ave.	2,442.32	219.61	
Chattanooga, East	2,644.42	441.41	
Chattanooga, First	11,200.00	13,087.86	
Chattanooga, Second	2,917.47	488.15	
Cleveland, First	9,824.20	375.99	
Cleveland, North		167.27	
Cleveland, South	131.69	38.08	
Clifton Hills	475.00	194.05	
Concord	1,835.50	178.33	
Corinth	24.00	21.00	
Cross Roads	15.00		
Daisy	219.19		
Dallas	6.07	22.05	
Daytona Heights	45.74	18.91	
Eastdale	1,530.00	607.17	
East Lake	2,257.28	425.53	
East Ridge	1,080.07	59.14	
East Twenty-Sixth St.	247.10	10.00	
Edgewood	166.00	12.75	
Fairview	20.00		
Falling Water	58.36		

	Cooperative Program	Designated and Reported	Founda- tion
POLK			
Forrest Wood		30.00	
Georgetown		28.41	
Goodwill		14.44	
Guild	3.00	10.00	
Highland Park	2,700.00	2,542.44	
Hixson	957.56	60.90	
Hughes Ave.	48.21	65.00	
Kings Point	17.55	10.00	
Kingwood		101.00	
Lebanon		26.75	
Little Hopewell	5.40		
Lookout Mountain	1,588.61	500.72	
Lookout Valley	8.00	50.50	
Lupton City	28.00	125.00	
McCarty	23.80		
Macedonia		86.24	
Maple Grove		55.00	
Michigan Ave.		56.00	
Middle Valley	33.93	101.55	
Morris Hill	390.00	42.81	
Mountain Creek	191.68		
Mt. Carmel		60.00	
New Bethel	5.60	25.00	
New Liberty	15.00	10.00	
New Union	5.61	5.00	
Northside	4,661.39	493.72	
Oak Grove (Hamilton)	1,609.21	257.79	
Oakwood	267.51	385.15	
Ooltewah	734.00	207.75	
Parkers Gap	37.28	72.81	
Philadelphia	5.00	85.70	
Phillippi	25.00	26.25	
Pilgrims Rest		5.94	
Pine Ridge		30.00	
Pleasant Grove		25.61	
Pleasant Hill		16.00	
Providence	44.00	27.00	
Red Bank	6,175.93	372.92	
Ridgedale	9,394.22	1,749.51	4.00
Ridgeview	1,013.00	104.71	
Rutledge		35.00	
Shady Grove	10.00		
Shepherd		68.64	
Shepherd Hill	5.42		
Signal Mountain	195.45	100.05	
Silverdale	310.29	81.14	
Soddy, Oak St.	328.95	101.98	
South Daisy	320.27	33.24	
South Soddy		13.50	
South St. Elmo		15.00	
Spring Creek	1,203.82	94.34	
St. Elmo	4,950.74	462.73	
Temple		39.20	
Thompsons		6.00	
Tyner	80.00	65.83	
Union Fork		10.00	
Victory	55.41		
White Oak (Chattanooga)	2,099.48	218.50	
Woodland Hgts.	25.00	239.88	
Woodland Park	4,967.58	736.84	10.81
Association		633.77	750.00

POLK			
Beech Springs		10.00	
Benton, First	8.06	82.52	
Benton Station	34.18	40.00	
Blue Ridge	10.00	29.75	
Boanerges		16.00	
Chestua		10.35	
Coletown	8.22		
Cooksons Creek		24.54	
Delano		30.35	
Fairview		10.00	
Greasy Creek		10.00	
Hiwassee Union	17.60	18.71	
Isabella	16.50	16.00	
Mine City	500.30	273.81	10.00
Mt. Harmony		13.00	
Mt. View		10.25	
Mt. Zion	90.00	131.09	
Old Ocoee	48.75	52.00	
Pine Ridge Mission	.70		
Pleasant Grove	13.20	12.00	
Shiloh	22.00	56.70	
Smyrna		26.00	
Welcome Valley	1.70		
Wetmore		9.00	5.00
Zion		31.95	5.00
Zion Hill	55.00	34.45	

PROVIDENCE			
Antioch	10.00		
Baptist Tabernacle	366.25	63.77	
Beals		50.00	
Bell Avenue		9.04	
Cave Creek	14.65	2.50	
Cedar Grove	10.00	49.51	
Dogwood Chapel	3.85		
Highland Park	5.35	75.00	
Jones Chapel		93.24	
Lenoir City, First	6,738.98	312.58	147.60
Lenoir City, Second		70.32	
Mars Hill	2.94		
Midway	363.91	74.64	20.00
Morganton	2.82		
Mt. Pleasant	7.00	38.00	
New Midway		14.18	
New Providence		35.00	
Old Ballards	68.15	44.27	
Oral	54.35	78.15	
Paw Paw Plains		31.37	
Pine Grove		30.00	
Pleasant Hill	403.39	119.64	
Shady Grove		26.13	
Silver Ridge	2.66	2.27	

Cooperative Program			Designated and Reported	Foundation	Cooperative Program			Designated and Reported	Foundation
South Holston					SEVIER				
Stony Point	12.00	15.50			Alder Branch	270.00	161.55		
Union Chapel	10.00	2.55			Antioch	150.00	3.00		
Union Stockton Valley		33.40			Banner		30.42		
West Broadway	82.43	20.00			Beech Springs	409.39	110.08		
Zion Chapel	5.82	37.57			Bethel	22.12	64.00		
Association	11.45	50.22			Boys Creek	321.39	72.05		
		26.50			Chestnut Hill Mission		4.25		
RIVERSIDE					Cove Mont	3.00			
Allardt	47.70	25.40			Dupont		39.65		
Allons	44.62	11.00			French Broad Valley		14.00	50.00	
Byrdstown	32.00				Friendship		7.50		
Calvary	10.50				Gatlinburg	73.12	149.20		
Celina	130.58	18.44			Gists Creek	49.33	48.00		
Clarkrange	53.00	30.00			Hendersons		11.95		
Clear Creek	1.51	2.40			Hills Creek		31.50		
Cliff Springs	1.00				Howards View	1.10			
Columbia Hill	40.00	10.00			Jones Chapel	17.00	35.00		
Davidson Mission	1.92				Laurel Grove		3.00		
Etter	39.78				Millican	37.01	73.63		
Fairview	1.03				Mountain View	31.60			
Falling Springs	7.42				Mt. Zion	2.76	11.60		
Fellowship	2.86	31.00			New Era		14.87		
Fredonia	15.00	64.72			New Salem	2.34	13.00		
Isolene	19.00				Oak City	5.00			
Jamestown	274.79	55.36	11.00		Oldhams		5.00		
Lovejoy	3.00				Paw Paw Hollow		234.00		
Manson	16.50				Pigeon Forge	77.25	54.75	7.00	
Mayland	7.68				Red Bank	18.99	25.00		
Moodyville	27.00	33.13			Richardsons Cove	3.01	5.05		
Mountain View	3.76				Roaring Fork		23.47		
Mt. Union	10.14	21.10			Rocky Grove	.50			
Muddy Pond	1.00				Sevierville	2,115.40	645.21	610.00	
Plateau	20.72	5.00			Sims Chapel	15.00			
Riverton	2.86	2.00			Sugar Loaf		13.15		
Vine Ridge	3.00				Valley View	1.73	10.00		
Wilder Mission	3.47				Waldens Creek	13.60			
Zion Hill	2.75				Walnut Grove	2.25			
Association		5.50			Wears Valley	45.00	70.00		
					Zion Grove	6.11	10.73		
					Zion Hill	93.67	57.53		
ROBERTSON					SHELBY				
Barren Plains	664.00	270.68	738.95		Ardmore	1,193.50	351.67	23.84	
Battle Creek	2.13		73.00		Arlington	115.50	23.66	54.00	
Bethel	161.25	88.66	5.00		Bartlett	607.44	39.73	78.00	
Bethlehem	146.47	68.70	91.75		Barton Hgts. Mission	30.67	7.50		
Cedar Hill	273.66	66.25			Bellevue	51,570.65	10,119.89	4,707.03	
Center Point	10.06	6.82			Berclair	2,067.31	127.04	258.11	
Concord	9.00	21.00			Beverly Hills			12.00	
Eastland Hgts. Mission	28.68	3.29			Big Creek	32.00	21.00	9.00	
Ebenezer	43.10	36.63	252.79		Boulevard	9,806.88	513.95	1,546.07	
Flewellyn	66.75	30.47			Breedlove	115.00			
Grace	337.95	147.22	293.17		Brunswick		23.02	102.00	
Greenbrier	1,051.31	128.68	54.93		Buntyn	428.61	86.80	30.00	
Hopewell	1,091.30	467.52	775.25		Calvary	3,201.57	449.56	636.59	
Mt. Carmel	1,170.33	130.99			Capleville	320.62	41.76	113.25	
North Springfield	355.40	43.46	8.45		Central Ave.	5,101.50	399.30	59.38	
Oak Grove	560.99	217.80	15.00		Collerville	1,406.17	693.47	171.05	
Oakland	13.85	4.80			Cordova	1,056.08	451.78	390.61	
Orlinda	1,836.96	593.10			Eads		84.51		
Pleasant Hill	600.00	73.98			Egypt	144.85	73.73	76.80	
Pleasant Valley	15.14	4.20			Elliston Ave.	198.00	30.06	20.00	
Red River	141.00	271.66	116.00		Eudora	76.50	321.34	80.81	
Rock Springs	3.00	89.46	58.53		First, Memphis	27,728.48	7,471.47	1,544.23	
Springfield, First	5,564.38	776.09	2,510.89		Fisherville	78.58	237.79	75.93	
White House	142.80	110.70			Flynn Avenue	5.00	6.80		
Williams Chapel	33.55	118.01			Forest Hill	169.16	50.17	41.00	
Association		25.00	103.00		Germantown	154.31	49.10	15.25	
					Highland Heights	7,212.73	1,742.94	1,668.76	
SALEM					Hollywood	991.95	215.10	5.00	
Auburn	608.78	166.94			Kennedy Memorial	569.69	179.47	31.25	
Barren Fork		17.50	20.50		La Belle	6,738.26	313.19	1,074.19	
Burt	45.37	40.00			Lamar Heights	2,062.51	274.41	512.30	
Cave Springs	31.18	10.00	33.33		Leawood	1,007.33	59.77	52.19	
Center Hill	22.00	7.85			Levi	488.96	92.21	275.81	
Coopers		16.00			Longview Heights	742.55	67.01	17.00	
Dowelltown	95.95	5.60			Louisiana Street	43.16	59.74	15.45	
Dry Creek	28.18	37.00	57.00		Lucy	76.00	25.85	5.00	
Gath	108.77	31.74	35.00		McLean Blvd.	2,984.06	1,747.50	1,150.00	
Indian Creek Memo.	8.43		8.50		Malcomb Avenue	1,943.51	82.93	61.12	
Madison St.	325.65	20.29	6.00		Mallory Heights	1,885.00	85.42	11.11	
Malone	5.87		3.18		Merton Ave.	2,934.00	408.77	487.05	
Mt. Herman	31.00	5.00	25.00		Millington	335.80	42.50	125.00	
Mt. Zion	238.56	82.67	82.67		Mt. Pisgah	128.64	41.48		
New Home	6.60		9.00		National Avenue	280.00	27.90		
New Hope	15.00	50.00	42.00		Oak Lawn	183.60	25.35	4.00	
Pleasant View	3.51	10.65			Oakville Memorial	595.38	165.74	183.44	
Providence	4.15				Park Ave. Mission	270.28	53.02		
Salem	328.00	322.77	174.50		Parkway	1,586.69	190.23	23.00	
Shiloh	7.67				Poplar Ave.	330.00	153.68	7.10	
Smithville	304.38	146.72	188.23		Prescott Memorial	6,588.95	619.86	811.57	
Snow Hill		18.00			Raleigh	518.98	52.29	100.00	
Sycamore		92.18	44.00		Riverside	606.14	55.68	4.00	
Whartons Springs	5.00	51.07	23.50		Seventh Street	3,041.95	260.69	107.25	
Wolf Creek	3.77	12.00	17.13		Shirley Park Chapel	18.00	17.50		
Woodbury	209.40	418.30	370.45		Southland	372.19	12.86	25.00	
Association		39.42			Speedway Chapel	312.03	42.05		
					Speedway Terrace	3,375.00	1,470.13	1,306.00	
SEQUATCHIE VALLEY					Sylvan Hgts.	200.00	46.31	18.32	
Cold Springs	20.00				Tabernacle	104.82			
Daus	5.54				Temple	24,072.22	1,364.99	3,139.75	
Dunlap	334.51	106.88			Trinity	675.00	497.13	60.00	
Ebenezer	47.45	41.86			Union Ave.	19,333.18	1,982.49	910.74	
Ewtonville	117.66	19.52			Wells Station Mission	22.93	4.15		
Flat Mountain	6.00				Whitehaven	220.00	224.61	151.04	
Griffiths Creek	34.35	4.00			Whitten Memorial	268.03	35.06		
Jasper	11.00	123.68			Woodstock	30.00	21.38	7.14	
Kimball Mission	106.04	13.30			Association		233.41	36.00	
Lee Station	25.00	9.00							
Mineral Springs	2.69								
Mountain View	14.94								
Pikeville	69.05	25.94							
Richard City	394.42	119.10	10.00						
Sequatchie	21.69	8.60							
South Pittsburg	2,195.65	448.64	61.00						
Whitwell	202.08	40.17							
Association		20.00							
					SOUTHWESTERN DIST.				
					Chalk Hill	39.00			
					Eagle Creek	11.59			
					Flatwoods		44.95		
					Unity	55.95			

REGIONAL CHURCH LIBRARY CONFERENCES

October 3rd—Northwestern
Trenton, Tennessee
First Baptist Church

October 4th—Southwestern
Jackson, Tennessee
Calvary Baptist Church

October 6th—South Central
Winchester, Tennessee
First Baptist Church

October 7th—Central
Gallatin, Tennessee
First Baptist Church

October 10th—North Central
Monterey, Tennessee
First Baptist Church

October 11th—Southeastern
Cleveland, Tennessee
First Baptist Church

October 13th—Eastern
Knoxville, Tennessee
Fifth Avenue Baptist Church

October 14th—Northeastern
Johnson City, Tennessee
Central Baptist Church

PLAN NOW TO ATTEND
Write for New Church
Library Booklist

	Cooperative Program	Designated and Reported	Foundation
STEWART			
Big Rock	176.87	82.50	414.00
Corinth			20.00
Crocketts Creek	1.25		35.15
Dover	492.02	226.45	808.00
Elk Creek	2.00		
Fairview	2.15		
Model	219.86	81.57	144.66
Mt. Sinal	5.00		
Nevils Creek	104.00	20.90	141.65
Oak Grove	15.50		
Stewart		10.23	
Tip Top	12.00	20.00	16.00
Walnut Grove		20.00	
Association		1.92	9.50

STOCKTON VALLEY			
Cedar Grove	1.13	5.00	
Fairview	.47		
Hinds Chapel	1.56		
New Hope	1.44		
Oak Grove	1.98		
Pleasant View	.67		
Seventy Six	20.18		

STONE			
Algood Mission	17.85	8.20	
Bear Cove	12.00	36.73	
Brotherton	7.00	3.60	
Cane Creek	2.00	29.25	
Caney Fork	24.20	28.75	
Cedar Hill	7.85	19.42	
Cookeville	1,548.71	845.38	
Dillard Creek	4.66	5.75	13.50
Dodsons		11.35	
Fourth St. Mission	26.00	49.77	.25
Free Union	1.44		
Gainesboro	5.00	52.94	49.05
Hampton Cross Roads		15.00	
Hanging Limb	15.50		
Jarid Mission	5.00		
Johnsons	.80		
Macedonia	5.50	5.00	
Mill Creek	8.71	29.50	
Monterey	499.85	192.94	50.00

	Cooperative Program	Designated and Reported	Foundation
STEWART			
New Salem Mission			1.50
Pinhook Mission	3.05		
Poplar Grove	55.59	13.00	
Poplar Springs	5.75	5.00	
Rocky Point	30.62	10.00	
Sand Springs	13.81	13.20	
Steven Street	211.48	61.00	
Thorn Hill	3.62		
Verble	1.24	5.00	
Wilhite	2.83		
Woodcliff	28.02	20.85	

SWEETWATER			
Antioch	5.00	3.50	
Beatys Chapel	3.00		
Blairland	53.12	34.71	
Calvary	5.00		
Chestua	336.02	53.00	
Chilhowee	5.64		
Christianburg	86.30	73.00	
Coker Creek		1.50	
Corinth	15.00	57.60	
East Sweetwater		21.95	
Fairview	6.50	66.00	
Glenlock	8.04		
Holly Springs	5.00	10.00	
Hopewell	3.73		
Loudon	562.74	136.71	50.00
Madisonville	783.52	314.44	
Mt. Harmony		22.28	
Murrays	3.25	7.50	
New Bethany		9.00	
New Macedonia		20.00	
New Providence	2.00		
North Sweetwater	15.00		
Notchy Creek	53.55	24.00	
Oak Grove	17.00	25.00	
Oakland	37.18		
Philadelphia	218.24	382.66	23.00
Piney Grove	1.05		
Poplar Bluff	5.00	11.50	
Prospect	169.85	170.96	
Reed Springs	2.68	21.00	
Rocky Springs	6.00	15.00	
Shady Grove	2.47	2.75	
Sheltons Grove	3.00		
Shoal Creek		5.00	
Sweetwater	1,750.00	812.32	20.00
Tellico Plains	41.35	87.34	
Towee Falls	5.00		
Unicoi	1.35		
Union Fork Creek	1.00	1.25	
Union Grove	4.17	3.57	
Vonore	107.58	47.00	
Watsons		19.00	
Association	5.36	47.39	25.00

TENNESSEE VALLEY			
Bethel	62.58	65.64	
Rogles Chapel	8.22		
Clear Creek	65.11	31.17	
Concord		9.00	
Coulterville		16.00	
Dayton	459.00	246.47	25.00
Garrison		35.00	
Grandview	25.00	109.30	
Graysville	18.00	17.00	
Hickory Grove Mission	.65		
High Point	2.26		
Lake Drive	34.00		
Mt. Vernon	89.26	81.13	
New Union	183.03	154.38	
Ogden	29.00	46.47	
Pennine		17.27	
Sale Creek		30.25	
Salem	76.03	70.50	
Smyrna	124.09	63.00	5.00
Spring City	434.26	225.37	
St. Clair	4.15	21.00	
Tennessee Valley	400.97	93.48	
Texas Grove	3.34		
Waldens Ridge	67.62	65.34	
Washington	16.60	40.65	
Wolf Creek	75.31		
Yellow Creek	47.55	40.81	6.20
Association		24.69	50.00

UNION			
Boiling Springs	15.00	6.50	
Campaign	42.04		10.00
Doyle	40.00	20.07	11.32
Greenwood			9.35
Hickory Valley	25.00		
Mt. Elim		14.00	22.00

	Cooperative Program	Designated and Reported	Foundation
STEWART			
Mt. Pleasant			3.00
Pistoles	32.66	22.16	
Pleasant Hill	71.54	25.65	32.61
Quebeck	9.19		
Shellsford	92.90	99.51	28.21
Sparta	650.00	117.18	32.38
Spencer	87.50	26.81	25.00

WATAUGA			
Antioch	4.06		
Bakers Gap		48.68	
Bethany	36.30	39.11	
Bethel	7.87	16.00	
Big Spring	103.92	78.00	
Biltmore	39.00	13.60	
Butler	115.54	12.25	
Caldwell Springs		44.18	
Calvary	524.83	104.27	
Cobbs Creek	9.00	47.73	
Corinth		9.25	
Doe River	604.47	64.45	
Doe Valley		38.08	
Dyson's Grove		8.29	
Eastside	400.00	22.54	
Elizabethton, First	9,104.45	1,288.65	184.21
Evergreen		155.91	
Fairview	315.33	53.21	
Fish Springs		32.85	
Grace	841.35	226.91	10.00
Hampton	327.26	80.10	
Happy Valley Mission	31.64		
Harmony		40.08	
High Point		25.00	
Hunter		4.00	
Immanuel	851.60	104.59	
Little Doe	115.27	64.10	
Little Milligan		60.00	
Meadow View		7.00	
Mountain City	608.40	112.21	
Mountain View		23.00	
Nelsons Chapel		5.40	
Oak St.	250.18	77.35	
Pierce		10.00	
Pine Grove		16.75	
Pleasant Grove		278.96	410.25
Poplar Grove		10.00	
Rainbow	9.69		
Rittertown		5.00	
Roan Creek		23.85	
Roan Mountain	2.75	73.25	
Shady Valley		10.72	
Siam	2,018.53	115.52	30.00
Sinking Creek	28.55	219.41	
Sink Valley		9.50	
State Line		20.00	
Stoney Creek	332.80	75.00	
Union	86.61		
Zion		50.00	
Association		12.43	130.35

WEAKLEY			
Adams Chapel	80.50	69.77	27.85
Beech Springs	29.68	34.69	30.00
Bethel	185.00	91.00	90.00
Bethlehem		30.19	
Bible Union	35.00	60.00	
Calvary	30.00		
Central	280.75	180.23	196.00
Corinth	10.00		5.00
Dresden	1,526.76	242.34	275.42
Gearins Chapel	25.00	17.15	25.00
Gleason	133.82	92.73	24.00
Greenfield	312.85	105.95	132.83
Jolley Springs	170.98	122.25	9.30
Macks Grove	75.34		
Moore's Chapel	9.67		
New Hope	71.67	21.00	25.00
New Prospect	8.25		
New Salem	118.47	13.30	
Northwestern	28.00		
Oak Grove	71.32	67.42	11.40
Old Bethel		45.83	
Palmersville	291.39	83.97	93.00
Pleasant View	16.65		
Public Wells	76.10	35.00	15.00
Ralston	49.00	58.50	30.00
Ruthville	42.00	58.44	
Sand Hill	50.00		
Thompson Creek	210.41	85.74	65.65
Tumbling Creek	10.40		
West Union	20.00	30.00	30.00
Association		15.45	25.00

WESTERN DISTRICT			
Bethlehem	175.00	16.25	
Big Sandy	14.14	10.00	
Birds Creek	15.00	25.25	
Cottage Grove	138.93	54.00	
Fairview Comm. Mission	3.56		
Henry	31.00	58.70	
High Hill	196.72	307.88	5.00
Jones Chapel	8.46	80.00	
McDavids	2.64	18.00	
Mansfield	13.25	14.75	
Maplewood	47.20	82.77	15.00
Mt. Sinal	29.21	10.80	4.55
New Boston	6.28	49.01	
New Hope	10.80	26.40	
North Fork	108.13	20.75	
Oak Hill		27.92	
Old Union	10.00	6.00	
Paris, First	7,710.95	2,261.38	581.60
Point Pleasant	10.68	129.50	
Ramble Creek	6.50		
Shady Grove	8.25		
Spring Hill	13.15	48.50	
Springville	8.26	8.00	
Union Friendship	6.00	188.00	75.00
West Paris	274.68	164.24	36.00
Association		18.00	30.00

H E A R

Elder Calvin Gregory

Baptist Minister of
Lafayette, Tennessee

over

W H I N

THE NEW GALLATIN STATION

1010 ON YOUR DIAL

Each Sunday afternoon from 3:15
til 4:00 except Third Sundays
when the time is 3:30 to 4:00

YOUR PRAYERS SOLICITED

KODAK ROLL FILM

DEVELOPED AND
8 - HOBBY SIZE PRINTS

FREE MAILING ENVELOPES
GIANT REPRINTS 4c each



HOBBY-PHOTO SERVICE
PORTSMOUTH, VA.

35¢
IN COIN

	Cooperative Program	Designated and Reported	Founda- tion
WEST UNION			
Bethlehem	87.91		
Black Creek	.95		
East Apple Tree		13.46	
Elk Fork	40.11	38.50	
Elk Valley	109.74		
Helenwood	12.20	16.00	
Hickory Grove		12.53	
High Point		26.04	
New Light		7.20	
Oak Grove		20.00	
Oppossum Rock		30.00	
Pine Grove		25.29	
United	10.52		
West Oneida	4.00		
WILLIAM CAREY			
Ardmore	365.77	177.77	20.00
Cash Point	280.55	98.39	53.60
Concord	43.75	21.00	25.00
Donaldsons Grove	15.85	5.95	
Elkton	50.15	14.84	7.50
Elora	10.78	30.50	
Fayetteville	1,287.71	478.23	193.14
Flintville	30.30	39.60	
Hickory Grove		6.00	
Kelleys Creek	74.13	72.55	35.00
Kirklands	90.21	10.61	
Lexie	25.00	2.60	
Macedonia	51.21	6.19	
Mulberry	67.26	27.75	
New Grove	18.00	170.98	115.00
New Hope			31.02
Oak Grove	4.00		
Oak Hill	17.00	14.00	15.00
Petersburg	486.61	120.22	30.50
Pleasant Grove		3.00	
Pleasant Ridge	20.75	10.00	
Prospect	22.78	28.97	50.00
Stewart Chapel	1.00	5.75	
Association		10.00	
WILSON			
Alexandria	906.95	175.00	600.00
Bartons Creek	242.99	31.80	333.49
Cedar Creek		65.00	57.55
Cedar Grove	62.52	160.43	
Chandler	26.50	41.35	25.00
Fairview	410.91	57.91	
Fall Creek	118.95	169.42	75.78
Gladeville	284.97	106.81	73.06
Greenvale	67.53	56.34	
Hurricane	145.86	30.41	
La Guardo	10.00	64.69	50.00
Lebanon	3,339.15	553.11	134.60
Linwood	20.71	16.72	15.86
Little Cedar Lick	66.00	254.00	
Mt. Juliet	813.11	121.07	43.30
Mt. Olivet	17.45	29.23	
Prosperity	819.94	74.00	233.00
Ramah	84.00		
Rocky Valley	5.00	28.33	
Round Lick	238.99	167.67	49.27
Rutland	18.50	25.00	21.00
Saulsbury	40.74	20.00	
Shop Springs	828.63	370.44	121.85
Smithfork	137.71	96.76	50.00
Watertown	1,022.10	87.64	
West End Mission	27.37	7.63	
Association		31.00	25.00
WISEMAN			
Lafayette	63.95	140.17	
Spring Creek			10.00
MISCELLANEOUS			
Calvary		8.14	
Dale Ridge	4.64		
Freedom	8.00		
Mt. Zion	1.00	.50	
Tabernacle	.50		
Tarklin Valley	16.00		
Temple	56.00	34.00	
Trinity	3.15		

Hayloft Becomes "Upper Room" For Baptist Revival Services

CENTERVILLE, Tenn.—(BP)—Local Baptists found a different kind of an "Upper Room." They took over the hayloft of a giant hill-side barn for a week of revival services.

Faced with the problem of getting their message out to rural members the congregation, led by the Rev. Harry L. Winters, decided to divide their usual summer meeting into two parts, one to be held in town, the other in the country after a week's rest. So they borrowed a giant stock barn from Farmer B. Cordell Baker, pushed back the machinery to walls, outfitted the loft with chairs, electric lights, and exhaust fans, and moved in a piano. For a pulpit they un-ended a 55-gallon oil drum.

All the extra work paid off. The meeting was very successful with over 200 attending a single service on the final Sunday.

Only drawback was the tin roof. When it rained nobody could hear the minister. The minister could not even hear himself.

"Feed My Sheep"

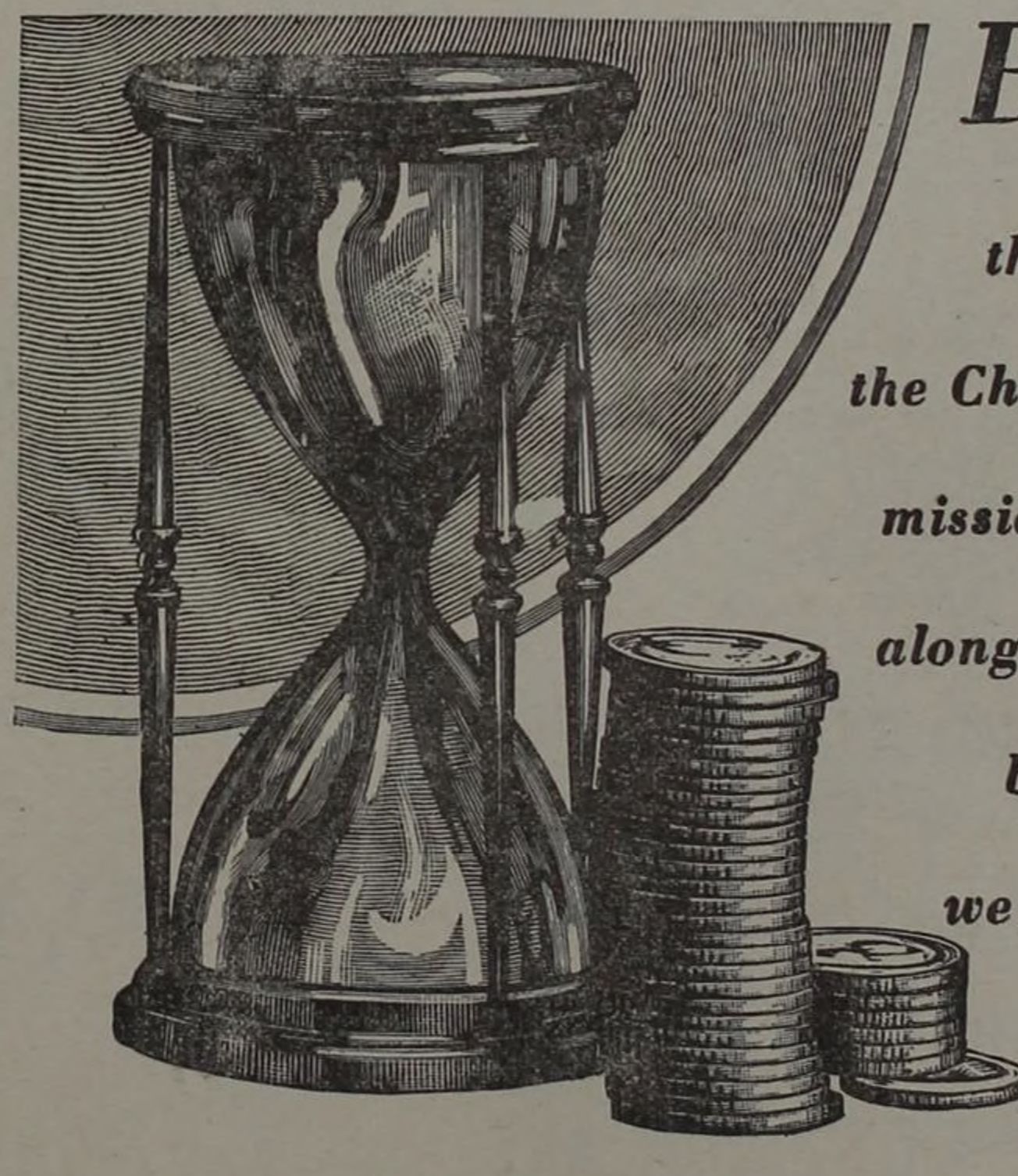
An old farmer who attended a church conference commented: "You amuse me, for you have papers and discussions on how to get people to come to your meetings. I have never heard a single address at a farmer's meeting on how to get cattle to come up to the rack. We put all our time on the best kind of feed."

—B.B.S.

You Are Important

In the midst of your darkest day stop long enough to remind yourself that you are important. Any man who has been created in the image of God is never useless. You may not have found the work for which you are best fitted. You may not see how your life is contributing much to the world's welfare. But one eternal fact remains—you are important. You have been granted a gift from heaven which no human power can duplicate—a personality. You have been endowed for two worlds—this one and the one to come.

—B.B.S.



Before

the atomic era

the Christian world

mission had to get

along on leftovers,

but today . . .

we fight against

TIME

**Mission work requires
millions**

The Co-operative Program of Advance calls
for an increase in gifts of \$3,500,000 a year

**Is your church doing its share
"...that the World may know...?"**

Sunday School Furniture prompt shipment
Opera Chairs two or three months
Pulpit Furniture sixty days
Church Pews delivery depending on
materials, etc.

SOUTHERN DESK COMPANY
Hickory, North Carolina

GOWNS

• Pulpit and Choir •
Headquarters for
RELIGIOUS SUPPLIES

Church Furniture • Stoles
Embroideries • Vestments
Hangings • Communion
Sets • Altar Brass Goods

CATALOG ON REQUEST

National CHURCH GOODS
SUPPLY COMPANY

421-23 ARCH STREET, PHILADELPHIA 7, PA.

Nation Wide Horizon . . .

Cumberland Law School

By HARRY PHILLIPS, *Executive Chairman*
Cumberland University Second Century

Program

Tennessee Baptists can make Cumberland THE Baptist law school for all states of the Southern Baptist Convention which have no Baptist law school of their own. In fact, the Cumberland Law School now has alumni in all forty-eight states and five foreign countries. Its scope of influence can continue to be not only south-wide but nation-wide.

When Cumberland University was transferred to the Tennessee Baptist Convention three years ago, the Baptists received not only a liberal arts college for Middle Tennessee but also a law school whose opportunity for service is state-wide, south-wide and nation-wide.

There are many reasons that Baptists in East and West Tennessee, as well as Middle Tennessee, should support Cumberland University:

(1) Baptists believe in training Christian leadership in public affairs. For more than a century Cumberland has been training leaders in public affairs through its famous law school. From Cumberland have emerged senators, congressmen, governors, cabinet members, jurists and outstanding practitioners throughout the nation.

(2) The Cumberland law school teaches the fundamentals. Its law professors are not only learned in the law—they also are learned in the principles of Christian living. Law is taught in a Christian environment.

(3) No isms are tolerated at Cumberland. Some of our so-called "progressive" law schools have been accused of teaching doctrines incompatible with the American way of life.

(4) Along with the minister and doctor, the lawyer is a member of one of the greatest of the professions. In every community he is a leader. Not only in public office but in private law practice he wields a powerful influence. No matter how skilled a lawyer he may be, he will be more valuable to his community if he is a *Christian*. A pastor finds a Christian lawyer to be a valuable deacon. Lawyers trained at Cumberland can be leaders not only in the legal profession but in the churches.

(5) Under Baptist auspices, the Cumberland law school already has received *provisional* approval from the American Bar Association, so that Cumberland graduates can take the bar examination in every state of the Southern Baptist Convention. By building up the financial support of Cumberland, Baptists can make sure that the highest standards of legal training will be maintained and that *unrestricted* approval soon will be granted by the American Bar Association.

The Baptists of Tennessee should not think of Cumberland University as exclusively a Middle Tennessee institution. Through the college of Arts and Sciences, Cumberland has an opportunity of rendering the great service in Middle Tennessee that Carson-Newman and Union have rendered in East and West Tennessee. Through the law school, Cumberland has horizons that extend far beyond the limits of Middle Tennessee.

Baptists of East Tennessee should give their unswerving loyalty and support to Carson-Newman College. At the same time they have reason to support Cumberland. The Baptists of West Tennessee should see to it that the great work now being carried on at Union University should go forward. At the same time they should support Cumberland University.

When the Baptists received Cumberland University, we accepted not only a great heritage but a great challenge. It is our opportunity to make the Cumberland of the Second Century measure up to the glorious accomplishments of the first one hundred seven years.

Dr. Lee, Vice-President United Dry Forces of Tennessee, Inc.

writes:

Robert G. Lee, Pastor
Bellevue Baptist Church
1208 Court Street
Memphis, Tennessee

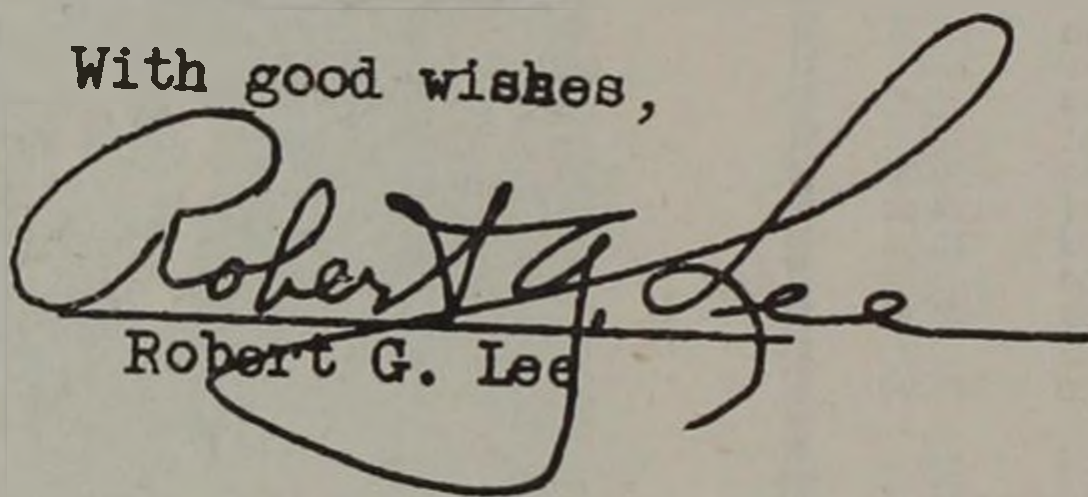
January 25th, 1949

Dr. James C. Furman
167 Eighth Avenue, North
Nashville 3, Tennessee

Dear Bro. Furman:

The Finance Committee will send twenty-five dollars per month. I am sorry it is not more. Maybe, before the year is out, we can increase it some. I hope so, though I can not say definitely. I hope every church will put you in the budget.

With good wishes,


Robert G. Lee

RGL:C

NEED WE SAY MORE?

James C. Furman
Executive Sec.-Treas.

UNITED DRY FORCES OF TENN., INC.

CLIP . . . AND MAIL

UNITED DRY FORCES OF TENNESSEE, INC.,
167-8TH AVENUE NORTH, NASHVILLE 3, TENN.

Date _____ 19____
Church, _____, Tenn.
has placed you in its budget for an annual amount of
\$ _____, payable \$ _____ Monthly; \$ _____ Quar-
terly, beginning _____ 19____ ... Our Pastor's name
is _____; our Treasurer's name and
address: _____

Payment
Enclosed

SIGNED _____
ADDRESS _____