

Baptist and Reflector

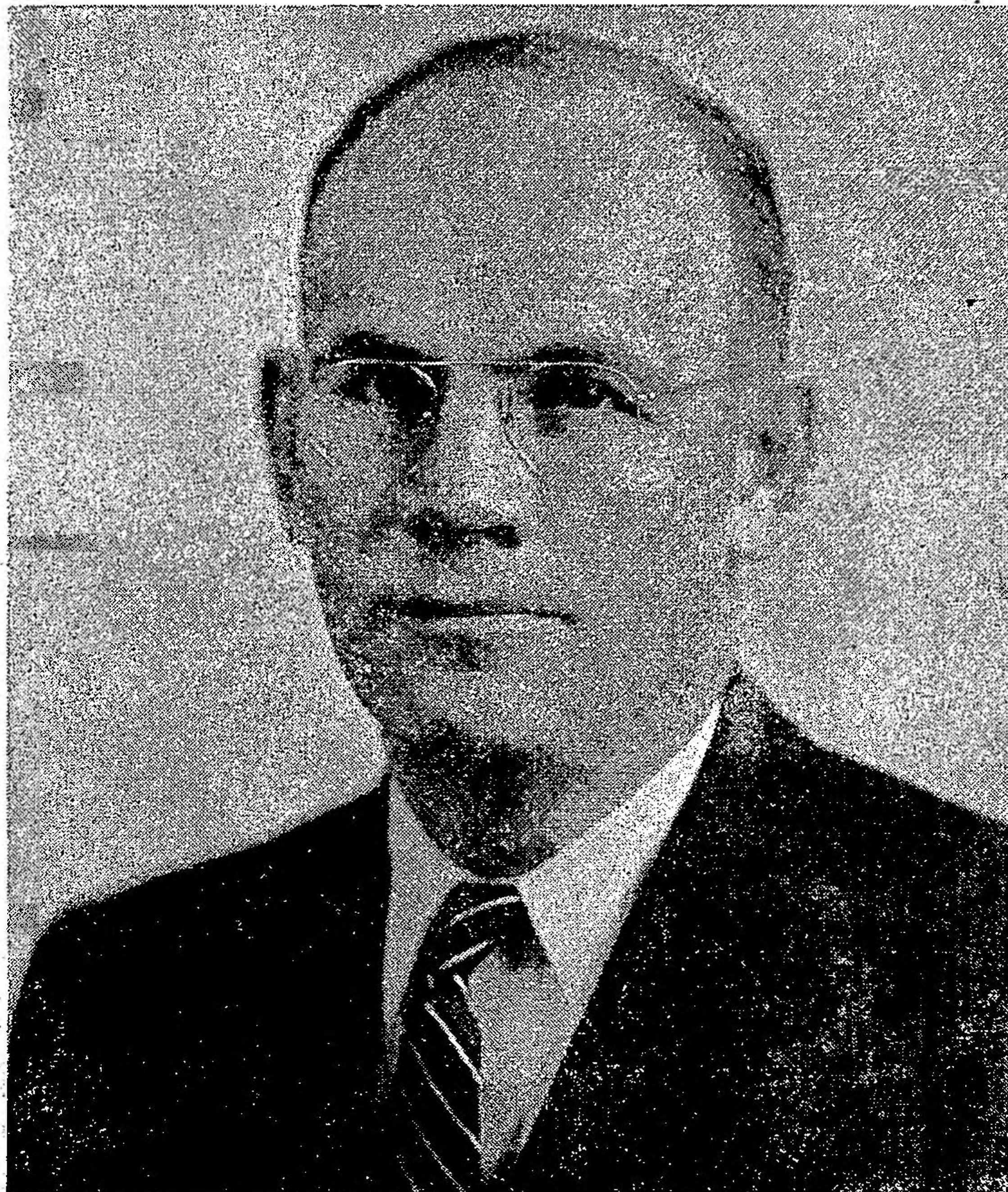
"SPEAKING THE TRUTH IN LOVE" ★ ★ ★ JOURNAL TENNESSEE BAPTIST CONVENTION

VOLUME 115

THURSDAY, DECEMBER 8, 1949

NUMBER 49

New Convention President



Message From the President

The direction is forward. In an all out effort we advance.

With united steps we must move forward in evangelism, missions, Christian education, benevolences and in every phase of denominational life. Past records in evangelism should be surpassed. Attendance records must be broken. Financial contributions must be enlarged.

With our noble Executive Secretary Chas. W. Pope leading, and with all our churches, pastors, convention officers and departments all working solidly united behind him, we will march toward greater things for our matchless Master.

Advance! That is the word. And it means forward.

JAMES L. SULLIVAN

LEBANON TENN
10-50

Baptist and Reflector

O. W. Taylor
Editor

C. W. Pope
Executive Secretary

Fred W. Noe
Business Manager

DIRECTORS OF TENNESSEE BAPTIST PRESS, INC.

Edwin E. Deusner, President; Richard N. Owen, Vice-President; J. R. Kyzar, Secretary; Andrew Tanner, E. L. Smothers, W. R. Hamilton, T. C. Meador, C. C. Bryan, David Livingstone

Editorial and General Office,
149 Sixth Ave., North, Nash-
ville 3, Tenn.

Terms of Subscription—Single
subscriptions payable in advance
one year, \$2.00, six months,
\$1.00. Other rates and plans
sent on request.

We do not assume the cost
of cuts.



Obituaries, Obituary Resolu-
tions and Non-Obituary Resolu-
tions—200 words free; 5 cents
each for words in excess of
200.

Advertisements—Rates upon
request. Announcements of
open dates by evangelists and
singers, and others, \$2.00 per
insertion.

Advertising Representative—Fred W. Noe

Entered at Postoffice, Nashville, Tenn., as second-class matter as a weekly except
during Christmas week, under the act of March 3, 1879.

TENNESSEE BAPTIST PRESS, INC., NASHVILLE, TENN.

EDITORIAL

AN APPRAISAL OF THE CONVENTION

WE GIVE HERE our reactions to the recent meeting of the
Tennessee Baptist Convention.

NO ECCLESIASTICAL JURISDICTION

Article IV of the Constitution of the Convention says:

This Convention shall have no ecclesiastical jurisdiction over the
churches, nor act as advisory counselor in cases of difference between
the churches, nor shall it interfere with the constitution of any church
or association.

The Convention is composed of messengers from the churches
and its actions are those voted by these messengers. Not one
time was the principle in Article IV violated, nor have we ever
known this to be done in all the many years of our acquaintance
with the Convention. This body does not "crack the whip" over
the churches.

"WE BE BRETHREN"

A blessed unity prevailed. If there were any differences of
opinion the brethren disagreed agreeably. Christian courtesy
marked the utterances and actions of the Convention. Had any
brother come to the Convention for the purpose of creating
confusion or "throwing a monkey wrench" into the machinery
and proceedings, it would have soon been evident that he could
make no headway. Many a time through the years we have
heard brethren in the state and elsewhere remark upon the fine
unity in the Tennessee Baptist Convention.

INSPIRATION

The addresses and sermons in the Pastors' Conference pre-
ceding and in the Convention were almost without exception
of an unusually high order. The speakers had evidently engaged
in thorough preparation and had come to deliver their sermons
and addresses by way of the throne of grace. And the music
as a whole in the Convention lifted the souls of the people
heavenward.

CLEAR TRUMPET NOTE

A clear doctrinal note was sounded throughout the Conven-
tion. The speakers showed that they believed the Word of

God and that they accepted, proclaimed and defended "the faith
once delivered unto the saints." But this clear note was always
sounded with compassion and courtesy. Thank the Lord for
the doctrinal soundness of Tennessee Baptists and of Southern
Baptists in general.

VISION

Grateful for past fruitages and humble through it all, Ten-
nessee Baptists have an enlarging vision of present and future
possibilities and responsibilities. And they want to march
onward in this spirit: "Lead on, O King eternal!"

ACCOMPLISHMENTS

Every phase of our Tennessee Baptist organized work the
past year showed a splendid advance. The details are found in
the writeup of the Convention and elsewhere and so are not listed
here. But we do note that for the first time the Cooperative
Program gifts of our people exceeded the million and a quarter
mark—\$1,310,357.00, or \$75,889.10 more than the year be-
fore. "The achievements of this year are the results of the active
cooperation of more than 1,600 pastors of more than 2,400
churches with more than a half million members, a host of
missionaries and denominational workers, working together
with God . . ." (Secretary Chas. W. Pope).

NAMES ARE NAMES

THERE ARE BAPTISTS who oppose conventions and boards
in the Lord's work and yet employ the same things under
different names. Note some definitions.

CONVENTION

"A body or assembly of persons met for some common
purpose" (Webster). The Tennessee Baptist Convention which
is composed of messengers from the churches and which met
recently in Nashville is a body of that kind.

ASSOCIATION

"A union of persons in a society for some particular pur-
pose" (Webster). Therefore, the Tennessee Baptist Convention
could just as well be called the Tennessee Baptist Association.
For instance, the same kind of body in Kentucky is called the
General Association of Kentucky Baptists. The Southern Baptist
Convention is at the same time the Southern Baptist Association,
or the General Association of Southern Baptists. A district
association is also a district convention. Baptists who oppose
conventions and yet meet in associations meet in **conventions**
under another name.

BOARD

"A number of persons appointed or elected to sit in council
for the management or direction of some public or private
business or trust" (Webster). The boards in our State Conven-
tion are elected by the messengers of the churches to fulfill the
trust committed to them. The same is true of the Southern
Baptist Convention.

COMMITTEE

"A body of persons appointed or elected to consider, investi-
gate, or take action upon, and usually to report concerning, some
matter or business" (Webster). Therefore, in essence a board
and a committee are the same things under different names.

A group which meets in an association and appoints com-
mittees on this or that meets in a **convention** and appoints
boards under other names. However, we know of an anti-
convention, anti-board association in the state which does not,
or did not, decline to use the term "board" in a certain con-
nection and to list an **Executive Board** in its minutes!

Yes, names are names. Baptists should not oppose conven-
tions and boards and then under different names employ the
same things which they oppose.

A Digest of Religious Thought

By RUSSELL BRADLEY JONES, Contributing Editor, CHATTANOOGA, TENNESSEE

Neither the editor nor contributing editor necessarily concurs in the opinions expressed on this page unless so stated.

"The Main Business" *The Baptist Courier*

What is the main business of Christians? The ready and obvious answer is that it is to carry out the commission of Christ. But some speak of "the main business" as being only one part of the commission. This raises the question: Is one part of the commission of our Lord more important than the other parts? Is one justified in referring to one part of the commission as "the main business" and, by inference at least, minimizing the other parts? If so, on what authority? Suppose we imagine Jesus' saying something like this: "Now, I want you to carry out the whole commission; just as I gave it to you; but, if you do not care to do it all, or if you do not find it convenient to do it all, just concentrate on _____ because that is the main thing." Of course, such a supposition is absurd. The program of Jesus for His churches is all one, including several parts or phases; and the several parts can be separated only for purposes of discussion. They are all important, Jesus commanded them all, and all are included in "the main business." For personal reasons only, individuals may have a particular concern for some one phase of the work such as foreign missions, personal evangelism, revival meetings, children's homes, Christian schools, etc.; but it is dangerous for one to claim divine sanction for his personal opinions and preferences if these exclude or minimize any part of what our Lord commands.

(Many churches fail the Lord because of the pet emphases of pastors who have not read the entire Commission.—R.B.J.)

Without Any Call *The Christian Index*

The pages of some religious papers now reveal a growing tendency for churches to advertise for pastors; for pastors to advertise for churches. We believe in advertising. Modern life is built around it. There won't be a path to the door of the manufacturer of the better mousetrap today unless he has advertised its merits. We believe advertising in the religious papers pay. Satisfied advertisers testify to its value, whether it be for certain sales or for good-will created. But, we want none of this advertising for a church or for a pastor. "Church in upper midwest desires outstanding personable associate—unlimited opportunities for service, excellent salary." We think the church needs a pastor more than it needs an associate. It needs someone to call the members to prayer that God may lead them to a man. "Experienced minister available for pastorate or supply work in western city. Write—" Sorry business, any and all the ways you look at it. We hope neither the church nor the minister gets results.

(Is there an epidemic of the Ephesian heresy? See Acts 19:1-7.—R. B. J.)

Experiment In Religion *Florida Baptist Witness*

Baptists have had the distinction through the generations of insisting upon each individual having an experience of grace, of having by faith experimented with Christ, before being eligible for church membership. We continue to go through the motions of such insistence, but are often later made to wonder if there was a genuine experience with Christ. Do we realize that Baptists are more and more becoming the one great stronghold of vital, experimental Christianity, that we are the one major body remaining which insists that before one can experience Christianity he must experience Christ?

A realization of such facts forces upon us not only the obligations for primary evangelism, but for teaching and training those evangelized for full usefulness.

(Now is the time to "contend earnestly for the faith."—R.B.J.)

Are We Defeated? *Ellis Jones Hough in The Christian Century*

Paul Blanshard's Book, *American Freedom and Catholic Power*, is being closely studied by many Protestants. Protestant circles give it favorable views and in public utterances Protestant ministers generally agree with its searching condemnation of growing Roman Catholic power. But in private how is this book regarded? When Protestant ministers talk to one another, the opinions expressed reveal not only that we are concerned with the political ambitions of the Roman church but also that we regard its clergy as far shrewder, far wiser, far more adept in public relationships than ourselves. There is also not lacking in our attitude a trace of jealousy and a feeling that perhaps it would be a good thing if we could take a leaf out of their book.

Basically it seems to me that at no time in American Protestant history have we Protestants been so aware of our growing ineffectualness as now. Politically, numerically and even spiritually we feel ourselves to be failing. And we are in the lamentable position of being able to do little about it except to read books like Mr. Blanshard's and to look with profound displeasure and dismay on the mounting influence in our nation and in Great Britain of what is regarded as a rival organization.

(Things are working out just as the New Testament prophesied. And God's plan IS NOT failing! Be sure of that.—R.B.J.)

"Bibliolatry" *The Southern Presbyterian Journal*

We presume there may have been people who worshipped the Bible. We have never met one, nor have we ever heard of one. But, the phrase, "Bibliolatry," is contemptuously used by some liberals to describe those who believe in the complete reliability of the Scriptures. The evangelical has reverence for the Word of God and is not ashamed of that attitude. Reverence is very different from worship. As the Word of God, the Book deserves to be revered. And right here is the crux of many of our troubles. The evangelical subjects himself to the criticism of the Bible. The higher critic presumes to subject the Bible to his own criticism and in this process rejects those parts which do not appeal to his reason, his conception of what things should be, or what he thinks are the findings of science. The work of the "lower critics" has been of inestimable value in understanding the Bible. The work of the "higher critics" has been a plague to the Church and the downfall of many unwary students. Scholarship alone can never be substituted for an humble spiritual approach to a study of the Scriptures. The natural man, regardless of his erudition, completely misses the message contained in its pages. The Holy Spirit alone brings the light through which the eternal truths are appreciated and understood.

"Thy word is true from the beginning; and every one of thy righteous judgments endureth forever. Princes have persecuted me without cause: but my heart standeth in awe of thy word."

Amen! Amen!

(We would like to add a Sevenfold Amen to this.—R.B.J.)

Convention Sermon . . . OUR AMBASSADORSHIP

R. E. Guy, Jackson

"Therefore we are ambassadors in behalf of Christ, as though God does beseech through us we pray in Christ's stead, be reconciled to God." 11 Cor. 5:20. By fitting "The King James Translation" into Moffatt's we have 11 Cor. 5:20 as quoted and neither translation has suffered any violence.

The word "Therefore" introduces the text which is the conclusion of an inspired argument, with a major and a minor premise. In the major premise there are five great facts carefully stated.

First: Heaven is every Christian's inheritance. "For we know that if our earthly house of this tabernacle were dissolved we have a building of God, an house not made with hands eternal and in the heavens." 11 Cor. 5:1.

Second: The Great Judgment is a stern reality. "For we must all appear before the judgment seat of Christ, that every one may receive the things done in the body, according to that he hath done, whether it be good or bad." 11 Cor. 5:10.

Third: The terror of the Lord is dreadful. Paul said, "Knowing therefore the terror of the Lord we persuade men." 11 Cor. 5:11.

Fourth: The love of Christ is our impelling motive. "For the love of Christ constraineth us." 11 Cor. 5:14.

Fifth: Reconciliation is our glorious message. "For all things are of God who hath reconciled us to Himself through Jesus Christ and hath given unto us the ministry of reconciliation. For God was in Christ reconciling the world unto Himself not counting their trespasses unto them and hath committed unto us the ministry of reconciliation."

The minor premise, in this half-hidden syllogism, is that the saved are new creatures in Christ Jesus and have become the recipients of heaven's glorious blessings.

THEREFORE WE ARE AMBASSADORS

Perhaps all Christians are ambassadors but in a very real sense all preachers are ambassadors. The honor of it should produce humility and foster gratitude. When God called Isaiah to be an ambassador, Isaiah said, "I am a man of unclean lips." Jeremiah said, "I am a child." John the Baptist said, "I am a voice," and Paul said, "I am the least." All ambassadors should be humble because we do not deserve the honor of our place.

A preacher asked Andrew Jackson to appoint him to some high office and Jackson's reply was, "You will have to come down from your high calling in order to accept any place I could give you."

RESPONSIBILITIES OF AMBASSADORSHIP

The responsibility which ambassadors assume is very heavy and should be keenly felt. It demands fellowship with God that we may be always sure of His will and it urges fellowship with Christians that they may share with us and we with them. Our great opportunity is to be co-laborers with God in the task of winning men.

As we engage in the work of an ambassador we become more and more like Jesus. The fellowship we have with co-laborers is a heaven-given opportunity and well worth the sacrifice of a seat in any fishing boat or at some publican's corner. The pay for our work has never been accurately estimated and will never be fully realized until we awake in His likeness.

Who is this Christ? "We are ambassadors in behalf of Christ." The one of whom Augustine said, "If Christ is not God, he is not good." The one of whom Webster said, "I believe Jesus Christ to be the Son of God." The one of whom Ingersoll said, "For the man Christ Jesus I have nothing but respect and admiration." The one of whom Gandhi said, "The one to whom I and all India owe most is Jesus." The one of whom Tom Paine said, "Jesus was a virtuous and an amiable man." The one of whom Voltaire said, "The last Christian died on the cross."

LOVE EXPLAINS BESEECHING

"We are ambassadors in behalf of Christ as though God does

beseech through us." Why God should beseech men who crucified His Son is beyond human intelligence but why he would be willing to depend upon us to deliver his message to dying men is just as difficult. Love explains God's beseeching and our reasoning would conclude that His love would provide a better way than our beseeching.

He knew we would do it poorly.

He knew that many of His ambassadors would be careless and selfish.

He knew that our covetousness would delay His message and that millions would be lost because God trusted His message to us.

He knew that our selfishness would counteract His fervor and that multiplied millions would perish because of our carelessness. How could He trust us with such important work? Certainly we do not plead for the lost as Queen Esther pled for her people.

GOD BESEECHES THROUGH US

In the First World War King George prepared a radio message for his people. Just as he stood before the microphone Walter Vivian, working in the control room, discovered that somehow two important wires were disconnected. He had no time to repair them and without any hesitation he grasped the wires with his bare hands. Nobody in radio land knew that the King's message was going through Walter Vivian. In the same fashion God beseeches through us.

"We are ambassadors in behalf of Christ as though God does beseech through us we pray in Christ's stead." Jesus wept over Jerusalem and prayed on the cross. In Gethsemane he prayed and sweat as it were great drops of blood. Too much of our praying has no blood, no sweat, no tears and far too often no earnestness in it. Just as Christ took our place on the cross we are to take his place on the mountain side and in Gethsemane in prayer. He intercedes for us which is a guarantee of everything and while Jesus is busy interceding at God's right hand he expects us to be busy about His work.

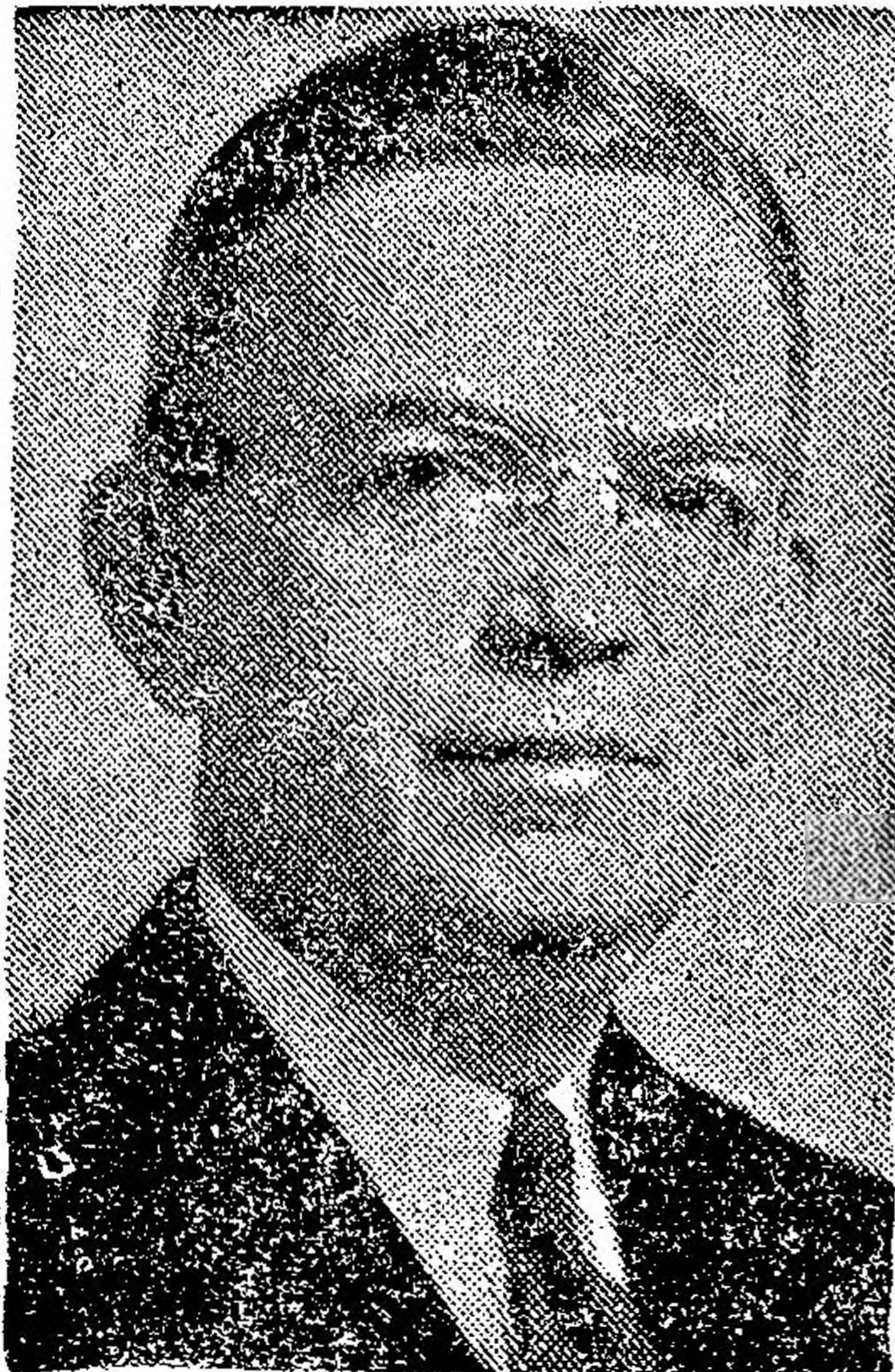
BE RECONCILED TO GOD

Many lost people want somebody to show them this plan of salvation and others can be persuaded by an earnest ambassador who is willing to cross a stormy lake to find a demoniac. We may need to risk public opinion by going through Samaria and finding some outcast at the well curb. We may need to "Become all things to all men that we may save some." "Be reconciled" is our message. It honors Christ because it is a message of grace. It reveals God's love in providing everything except the lost man's consent and Christ sends us to persuade men. There is urgency in our work.

A paper boy said to well dressed passengers who were ready to board a fast train, "I must sell them, I must sell them." A kind hearted conductor detected sincerity and earnestness in the little boy's words and said, "Why, Son?" The boy said, "Mother is sick and we must have a sack of coal." Soon all of his papers were sold and several extra dollars were placed in his little, dirty hands by passengers who recognized sincerity and earnestness. We need today the same love for God which the boy had for his mother. Perhaps there was never manifested any great sincerity nor any great earnestness where there was poor love.

Do we love the Savior who became Sin in our behalf? God made His Son a liar that he might die for liars. He became a murderer that he might die for murderers. He died for all my sin and I must tell the world about it. More than six thousand lost people have died since this afternoon session began and none of us weep much about it or do much to rescue the millions who face the future without a ray of hope. Why can't we make a great sacrifice for Christian Education that we may somehow find and prepare the one thousand missionaries who are greatly needed "now"? Millions are dying and many millions more will die before we find and prepare these missionaries.

New Vice-Presidents of the Convention



★ ★ ★
RUSSELL BRADLEY JONES
 First Vice-President
 Chattanooga
 ★ ★ ★



★ ★ ★
JAMES A. CANADAY
 Second Vice-President
 Jackson
 ★ ★ ★

Report of Pastors' Conference

By EDWIN E. DEUSNER, Lexington, Tennessee

The theme of the Tennessee Baptist Pastors' Conference this year was "Keeping the Faith." The Program Committee, composed of Luther Joe Thompson, Springfield; J. G. Hughes, Memphis; and Emory L. Williams, Knoxville, had arranged an interesting program around this theme and a large crowd of pastors and laymen was on hand to hear it.

L. S. Sedberry, Nashville, presided over the meeting, assisted by V. Wayne Tarpley, St. Elmo Church, Chattanooga. President Sedberry introduced Miss Mary Altie Caffey, Murfreesboro, as the pianist for the meeting and Brother and Mrs. Floyd Cates, Poplar Heights Church, Jackson, as song leaders. Brother Cates then led the congregation in singing "Glory to His Name," "We're Marching to Zion," and "My Faith Looks Up to Thee." He and Mrs. Cates then rendered a beautiful number entitled "Lord, What Wilt Thou Have Me to Do?"

Hayward Highfill, Humboldt, read Galatians 3:1-14 and offered prayer.

BROTHER GIERS' MESSAGE

The first speaker was Carl J. Giers, Chattanooga First, whose subject was "Keeping the Faith Through Loyalty to Our Baptist Heritage." Brother Giers stated that his religious background was Lutheran and that he had come to be a Baptist through the conviction that Baptist principles were New Testament principles. His manuscript was requested for publication in a later issue of Baptist and Reflector. Perhaps a few words will give some idea of the speaker's thought. "First of all," he said, "From whence have these priceless heritages come?" He then cited several historical incidents showing the progress of Baptist principles and the contribution they have made in building nations. His next question was "What are these Baptist principles that make up our heritage?" In answer he gave the following: (1) a regenerated church membership, (2) baptism of believers by immersion only, (3) the democratic form of church government, (4) salvation by grace through faith, alone, and (5) freedom of conscience, freedom of worship—a free church in a free state.

The closing part of his message was an admonition to safeguard this heritage. "We need to lay hold upon them lest they slip away from us," he said. "Listing some dangerous procedures, I would say (1) we must not ape other churches. (2) We must not 'tone down' our fundamental convictions for the sake of harmony. (3) We must not lower our standards in our zeal for numbers."

At this time Vice-President Tarpley read the names of the Nominating Committee: Burch Cooper, Lonsdale Church, Knoxville; C. M. Pickler, Boulevard Church, Memphis; and Richard N. Owen, Clarksville, First.

After singing "At the Cross," the congregation listened with approval to another fine number by Brother and Mrs. Cates, "It Pays to Serve Jesus." T. G. Davis, Oak Ridge, Robertsville, led in prayer.

BROTHER PHILLIPS' MESSAGE

The second address of the meeting was given by the Hon. Harry Phillips, Assistant Attorney General of the State of Tennessee, who spoke on the subject, "Keeping the Faith Through Christian Education." Brother Phillips devoted the major part of his message to a discussion of the situation at Cumberland University. He is an alumnus of Cumberland's Law School and is at present heading up a campaign to raise funds for improving that institution. Mr. Phillips has agreed to submit a digest of his address for publication in Baptist and Reflector. "If I take on anything else in the way of campaigns four things are going to happen. The Attorney General is going to fire me, my wife is going to divorce me, my mother is going to disinherit me, and my pastor is going to ex-communicate me," he declared. This drew a hearty laugh from the audience.

The Nominating Committee recommended that Earl Stallings, Ridgedale Church, Chattanooga, be elected as President for the ensuing year; that Bernard Scates, Lawrenceburg, be elected Vice-President; and that Clyde Burke, Medina, be re-elected Secretary. The report was accepted and these brethren were elected unanimously.

One of the most enjoyable features of the conference was the singing by a group of students from American Baptist Theological Seminary.

Frank Charton, Minister of Music at First Church, Chattanooga, sang a solo entitled, "Why Do I Sing About Jesus?"

BROTHER SMITH'S MESSAGE

The concluding message of the service was brought by Selwyn Smith, Pastor of McLean Blvd. Church, Memphis, whose subject was "Keeping the Faith Through Witnessing." This message gave evidence of wide reading and a keen analysis of religious trends. It too will be published.

The closing prayer was given by E. Gibson Davis, Kingsport First. The 1950 meeting of the conference will be held at First Church, Knoxville on November 14.

Sunday School Lesson

By O. L. RIVES

Professor of Religious Education, Carson-Newman College
Lessons based on International Sunday School Lessons; the International Bible
Lesson for Christian Teaching, copyrighted by International Council of Religious
Education
For December 11, 1949

The Young South

SEND ALL LETTERS TO AUNT POLLY

149 Sixth Avenue, N.

Nashville 3, Tennessee

TEXTS: Jeremiah 8:4-7; 26; 31 (Larger)—Jer. 8:4-6; 31:29-34
(Printed)—Jer. 31:33 (Golden).

Jeremiah Teaches Personal Religion

What is religion? How does Christianity differ from other religions? How much did Jeremiah in the long ago have to say about the Christian religion as we know it today? We may begin the study of this lesson in the light of some such questions.

I. BACKSLIDING NECESSITATES REPENTANCE (Jer. 8:4-6).

1. *The natural tendency of man is backward.* Thinkers in various areas of knowledge have come sooner or later to this inevitable conclusion, for the facts have compelled them to do so. The theologian, guided by the teachings of God's Word, is able to furnish the best explanation for such a tragic conclusion. He explains it on the basis of the fall of man in the Garden of Eden which resulted in the taint of the race from that time to the present. There was a day when some men talked quite glibly about the evolution of mankind, and promised in glowing terms his onward and upward progress. One hears only an infinitesimal amount of such talk at present. And why is this the case? The answer can be found in the head-lines of the morning newspaper when they scream what God said in His Word ages ago, namely, that man left to himself goes backward.

2. *The super-natural change of life is essential.* The doctrine of repentance is a precious one and needs to be understood thoroughly. It means more than reformation although repentance will result in the same. The Holy Spirit moves within the heart and life of the individual in such a way that he sees sin and wrong-doing as God sees them. And this causes the sinner to become completely overwhelmed with guilt and shame to the extent that he cries out for mercy and pardon. When with an exercise of faith in Jesus Christ as his saviour, and enabled even in this by the Holy Spirit; he at the same time is empowered to turn away from his sin and sinning, his life becomes changed because his heart has already been changed by means of the Holy Spirit's work. Jeremiah glimpsed this even if he did not elaborate it, as the verses show.

II. PERSONALITY INVOLVES RESPONSIBILITY (Jer. 31:29, 30).

1. *God has so made us.* It has seemed to the writer for a long time that the expression, "In His image" (Gen. 1:26ff), means that God made man by endowing him with the essential characteristics of personality that He already possessed. This suggests, among other things, that he can exercise the power of choice. This suggests that he is free even to say "No" to his Creator if he so chooses. What an awe-inspiring thought this is! Indeed, this could well be the spiritual interpretation of the old Greek story of Prometheus who stole fire from heaven and gave it to man. However, of this we are sure that God has made us as persons and as persons we are held responsible for our acts.

2. *Men so require of us.* This lies at the very base of human society and furnishes the foundation of ethics or morality. Was it Immanuel Kant who said, "I can, therefore, I ought"; or was it the other way around? Both alike are true and both alike involve personal responsibility not only to God but to those about us. Sociology senses this in showing how the youth is held accountable to the group when he reaches a certain stage of maturity. Theology sees this when it speaks of the "years of accountability" in connection with condemnation and the need of personal commitment of heart and life to God.

III. RENOVATION PRODUCES RIGHTEOUSNESS (Jer. 31:31-34).

1. *Religion begins in the heart.* Jeremiah speaks of a new covenant, and implies a renovation. Jesus speaks of regeneration and specifically says that without it one cannot see the kingdom of God (Jn. 3:1ff). It seems that both are talking about the same experience. Christianity is fundamentally, and uniquely, a religion of personal relationship between the individual and God in and through Christ. And thus it is a religion, first and always, of the heart. What this implies is indicated by lovers who use the expression, "sweet-heart."

2. *Religion fruits in the living.* Of course it does if it begins in the heart and is allowed to grow and blossom and bear fruitage. The Wise Man indicated this a long time ago (Prov. 4:23). Our Lord also said the same thing. Again, He reminded that His disciples should be known by their fruits. He expects that we shall bear fruit (Jn. 15:1ff). The Christian religion is one of high moral standards and beneficent deeds. "Pure religion and undefiled before God and the Father is this, To visit the fatherless and widows in their affliction, and to keep himself unspotted from the world" (Jas. 1:27). James saw clearly what Jeremiah perhaps saw dimly. The Holy Spirit inspired both.

Christmas will be here almost before we know it! Already the stores and streets are decorated. The air is filled with Christmas music—which reminds me—

Did you remember to get some copies of the Christmas carol booklet which we used last year in our Christmas services? Perhaps you saved your copies from last year. That's fine. But if you need more copies—or if you don't have any—you still have time to write for and receive them before Christmas day. You may need only one copy, or enough for each member of your family. Or your G.A. group, Training Union, or Sunday school class may wish one copy for each member. All you have to do is write a postal card to the John Hancock Insurance Company, Nashville Trust Building, Nashville, Tennessee, and ask for the number of copies of the carol book that you will use.

Did you know that carols were probably used as long ago as the fifth century? But fifth-century carols were not carols as we know them. In fact, it is believed that carols began as a pagan practice and were danced as well as sung. That kept them from being accepted favorably by Christian people. My dictionary says the word "carol" comes from the old French word *carole* which meant to dance.



Carols as we know them—the true Christmas carol—probably started in Italy in the thirteenth century. Francis of Assisi helped some of his friends build a creche showing the scene of the first Christmas. Then they gathered around the creche and composed and sang songs about the birth of Jesus. These songs, and others which were written later, soon spread to Spain, France, England, and Germany. The earliest carols in the English language were probably written in the fifteenth century.

Carols were very popular in England, until the early part of the seventeenth century. Then the Puritans did away with all Christmas festivities. However, some copies of the carols were secretly distributed, and folks continued to learn them and to sing them in their hearts. Later, when carols were again permitted, Christmas hymns were widely used.

My dictionary says a carol is "a song of joy, often a joyful hymn." That's why we sometimes refer to the angels' song on the first Christmas as the first carol ever sung. That's why, too, that carols are so popular with people everywhere at Christmas time. Christmas is a time of joy, a happy celebration of a joyous occasion. Whether we sing "Joy to the World," "Silent Night," "God Rest You Merry Gentlemen," "Deck the Hall," or the modern "White Christmas," the song is one of joy—deep joy in our own hearts and in the hearts of those who hear our songs. And it is a joy which can spread to the ends of the earth.

This Christmas joy has been felt already in the hearts of many people in many parts of our world. In fact, many of our favorite Christmas songs are by friends of other nations. German friends gave us "Away in a Manger," and other favorites. "The First Noel" is by a Frenchman. So is "O Come, All Ye Faithful." "Deck the Hall" is a happy Welsh tune.

There are many other beautiful carols—English, Welsh, Canadian, Swedish, Polish, Spanish, Norwegian, Venezuelan, Croatian, Dutch, Italian, Czechoslovakian, Porto Rican, Hungarian, Mexican, Brazilian, and, of course, American. If you'd like a book with all these different songs, perhaps you'll want to order from your book store a copy of *Christmas: Its Carols, Customs, and Legends*. This is compiled and arranged by Ruth Heller, published by Hall and McCreary Company. The price is 60 cents. As the title suggests, besides songs, there are many interesting facts about how Christmas is observed in other lands. The songs are grouped geographically—all the American ones together, the English ones together, and so on, with explanations about Christmas traditions in each section.

Listen for carols this week. Sing carols this week—and next week—and on and on. Let them be truly "joyful songs" that express your own happiness for the Christ child whose birth was announced by an angel choir!

Love,

AUNT POLLY

BAPTIST AND REFLECTOR

Sunday School Department

149 SIXTH AVE., NORTH, NASHVILLE 3, TENNESSEE

W. G. RUTLEDGE
Superintendent
MISS GLADYS LONGLEY
Associate



MISS OLETA MEEK
Elementary Worker
MISS DOROTHY CAMPBELL
Office Secretary

Baptist Training Union

149 SIXTH AVE., NORTH, NASHVILLE 3, TENNESSEE

CHARLES L. NORTON, Director
MISS ROXIE JACOBS, Int.-Jr. Ldr.
MISS MARY ANDERSON, Assoc.



MISS DORIS BROWN
Office Secretary
O. O. MIXSON
Convention President

JANUARY BIBLE STUDY WEEK

Use the Book of Acts as the Text, and Studies in Acts
As Guidance Material

During January, February, and March our Uniform Lessons will be centered around "The Early Christians Facing Their World." Dr. William J. Fallis has written a splendid guide, a fitting preparation for the enrichment of our second quarter's Sunday school lessons.

* * * **ENLIST EVERY CHURCH** to promote this week of study. Last January thousands of churches were greatly blessed in the study of John's Gospel. These and other churches will not want to miss the opportunity of another January Bible Study Week.

* * * **URGE THE SUPPORT OF EVERY CHURCH ORGANIZATION.** This week is not promoted as a training school, but as a "Bible Study Week," led by the pastor, promoted by every organization of the church, and participated in by every church member.

* * * **WORK FOR THE ATTENDANCE OF EVERY CHURCH MEMBER.** Christians today need to restudy the glorious mission of a New Testament church, and to reaffirm our commitment to a faithful proclamation of the gospel of Christ. A fresh study of the acts of the apostles will reassure our faith and strengthen our convictions.

* * * **READY FOR DISTRIBUTION.** *Studies in Acts* is now in the book stores. Leaders planning to observe the January Bible Study Week will desire to place their orders immediately, so that the book store involved will have time to see that the books are in the churches for distribution at least one week in advance.

Begin the New Year with a Week of Bible Study AT THE DALLAS CLINIC

One entire session of the Convention-wide Sunday School Conference in Dallas, Texas, December 27-30, will be used for a practical discussion of "Better Workers."

Some of the conferences and discussions will be led by Dr. W. A. Criswell, pastor, First Baptist Church, Dallas; Dr. W. R. Pettigrew, pastor, Walnut Street Baptist Church, Louisville, Kentucky; Dr. J. H. Landes, pastor, First Baptist Church, Wichita Falls, and Dr. John Haldeman, pastor, Allapattah Baptist Church, Miami, Florida.

FORMER TENNESSEE PASTOR ON PROGRAM



DR. FRANK WOOD

At the Dallas Clinic Dr. Frank Wood of Birmingham, Alabama, will be on the program. Dr. Wood will be remembered in our state as the former pastor of Fifth Avenue Baptist Church, Knoxville. With Dr. Wood will appear other outstanding Sunday-school-minded pastors of the convention.

*Take Your Family
To Sunday School*
"There will be a greater feeling
of family unity."

Excerpts From the Training Union Report to the Tennessee Baptist Convention

Introduction by Edwin E. Deusner

Dr. Albert Einstein is reported to have said on a certain occasion, "I am rarely enthusiastic about what the League of Nations has done or has not done, but I am always thankful that it exists." Reading that quotation one feels that this is a picture of the attitude of many Baptists toward the Training Union. We are thankful that it exists even if we fail to give it much claim upon our time and attention, and even if we fail to get enthusiastic about what it has done or will do.

The results of many years of Training Union work speak louder for its continuance than many defenders. Throughout the years, Baptist Training Union has furnished the other phases of church activity with trained leadership, and now the need is greater than ever before. Our experts in Sunday school work are constantly reminding us that our Sunday schools must be enlarged—that there must be more classes and more teachers. Anyone who has ever served on a Church Nominating Committee knows that the Training Union is the first place to which we go for help when a vacancy occurs, or when a new worker is needed. The same thing holds true with regard to Brotherhood and W.M.U. work. It would make interesting reading to know just how many of the workers in these two organizations are products of the Training Union.

As great and as important as this function of Training Union might be, we feel that there is one that is even more important. Many who will never teach a class, or lead an organization in the church need the training that is offered by the Training Union. We have seen it happen and so have you. Two people will present themselves for membership in a church at the same service. Both are invited to participate in the Training Union activities. One accepts and grows in grace; he (or she) learns to tithe, to pray in public, to systematically read the Bible day by day, and to appreciate the work being done by missionaries at home and abroad. Through the doctrinal programs, this one becomes well-grounded in the fundamentals of the faith. The other member does not attach himself to the Training Union, and in many cases the member becomes only another name on the church roll.

Activity Report

The year 1948-49 has been a year in which marked progress has been made in Training Union work. During the year 224 churches have organized Training Union work for the first time. The Training Union Department has made an earnest effort to present a program of work to every Training Union and to every Association and it gives us pleasure to present some of the outstanding achievements.

Study Course

Number of churches reached	711
Number of associations reached	56
Number of awards issued in 1949	33,697
Awards issued in 1948	30,876
Awards issued in 1947	29,414
Awards issued in 1946	27,936
Awards issued in 1945	24,577
Awards issued in 1944	22,870
Awards issued in 1943	18,982

Standard Unions and Story Hours

Standard Adult Unions	85
Standard Story Hours	42
Standard Junior Unions	62
Standard Intermediate Unions	70
Standard Young People's Unions	31

(Continued next week)

Woman's Missionary Union

149 SIXTH AVE., NORTH, NASHVILLE 3, TENNESSEE

MRS. SAM HOLLOWAY
President

MISS NELLIE TALLANT
Young People's Secretary



MISS MARY NORTINGTON
Executive Secretary-Treasurer

MRS. DOUGLAS GINN
Office Secretary

Busy December

"The year is gone, or nearly so;
So much to do, so much to know,
This one last month, these last few days
The year will go. Its tally stays.
What was that pledge, that deep intent?
Has all been done—all effort spent?"

December is a busy month for all, but as it is the last month of the W.M.U. Year, there are some things that we must now do.

1. You are now in the middle of the Foreign Mission Season of Prayer. May you get a real blessing from your days of prayer and study. Did you make a worthy offering? See that it is sent promptly to Dr. C. W. Pope, 149 Sixth Ave., North, Nashville, marked "Lottie Moon Offering." Ask your church treasurer, if he handles it, to please send it in by December 30th.

2. Have an executive committee meeting of the out-going and in-coming officers. At this time all records of tithers, mission study, membership, etc., should be given the chairman for 1950. Check your standard and see if you are "A-1 or A-shamed."

3. Plan a new circle, make an outstanding woman chairman, have a good assistant, and then enlist the women who are not now in the missionary society. There are more women church members who are not members than are in the society. Let us pray, work and visit "fetch-em" and use every way to win them. Next to winning a soul to Christ is to win one into service.

4. Adopt an apportionment. Make an expense budget for your society. Accept an amount for associational and divisional expenses. Decide what you can give to our new WMU building in Birmingham and to our Training Schools. Double your gift of last year.

After consulting your church treasurer, finding what your WMU members give to the Cooperative Program, accept that as your apportionment for the Cooperative Program. If your church gives a per cent to missions, find out that amount. For example, if a woman gives \$100.00 a year to the church, and that church gives only twenty-five percent to missions, you report only \$25.00 as her gift. You do not report any amount except gifts to missions. Send your apportionment to your associational superintendent. Let us remember our slogan "Fifty-fifty by 1950." We must help our churches increase the percentage to missions.

5. Make your financial report for the quarter, and your annual statistical report to your associational superintendent by January first.

6. Return your questionnaire sent to you with the Week of Prayer literature so you can secure a Year Book and Guide Book for the circle chairmen.

7. Order your standard of excellence for all organizations. These can be secured from your State Headquarters, 149 Sixth Ave., North, Nashville, for ten cents each. From the same address order talent search sheets, ten cents a dozen. 75 a hundred; Guide Books, .25 a dozen. \$2.00 a hundred; Stewardship booklet, "We Have A Treasure." .10 each.

Order today from your State Office, 149 Sixth Ave., North, Nashville.

Remember the Lottie Moon Offering

Brotherhood Department

149 SIXTH AVE., NORTH, NASHVILLE 3, TENNESSEE

E. N. DELZELL
Secretary



BERNICE BROWN
Office Secretary

The Foundation of the Tennessee Baptist Brotherhood

There seems to be some confusion in the minds of some of our Baptist brethren or a lack of understanding as to what part the Brotherhood has in our church and the denominational life. In order to clarify this we make the following statement: As the Sunday school is the teaching department of the church with its Vacation Bible Schools; the Training Union is the training department of the church with its Better Speaker's Contests and Sword Drills; and the W. M. U. placing emphasis on Missions, it is my conviction that the Tennessee Baptist Brotherhood has four great objectives that lie at the foundation of the Brotherhood. They are:

1. The promotion of attendance upon the worship services of the church.
2. Promotion of church and denominational finances.
3. Promotion of Baptist doctrines.
4. The promotion of evangelism.

There may be any number of other objectives or jobs that the Brotherhood will be called upon to do or sponsor, which they will be glad to accept. The local church may have some job that the Brotherhood should do. In this case the Activities Vice-president of the local Brotherhood will make it a project. An Association may have some vital job that needs the strength of all the Brotherhoods of that association. In this case the Activities Vice-president of the association will make this job an associational project.

Dr. C. W. Pope, State Executive Secretary, and Executive Board may have some important task to be done and in this case all the Brotherhoods of the State will combine their strength in the accomplishment of this task. However, when we think of the great objectives that lie at the foundation of the Brotherhood, they are the four great objectives mentioned above.

If anything is weak or lacking in our denominational life, it is the Brotherhood's opportunity to serve that need for his denomination. If anything is lacking in our church life, it is the Brotherhood's responsibility to fill that need. If anything is weak or lacking in the individual life, it is the Brotherhood's responsibility to fill that need in the name of Jesus Christ our Lord.

The denomination introduces men to Christ.

The Brotherhood enlists men for Christ.

The denomination presents Christ as Saviour.

The Brotherhood presents Christ as Lord.

The denomination says, "Come, worship."

The Brotherhood says, "Go, serve."

Northside Baptist Church, Chattanooga, Tennessee, organized Brotherhood and officers are as follows:

Pastor _____ Rev. Carl W. Rogers
President _____ Robert L. Ramey
Program Vice-president _____ Eugene F. Clay
Activities Vice-president _____ Robert J. Batson
Membership Vice-president _____ George Liner
Associates _____ M. L. Mulkey
John Barker
John Kerr
Secretary-Treasurer _____ A. E. Bazemore
Chorister _____ Leonard H. Owens
Pianist _____ Everett Kerr

BAPTIST AND REFLECTOR

Lockeland Church Calls Pastor



James M. Gregg is the new pastor of Lockeland Church, Nashville, effective December 7, succeeding L. S. Sedberry, who recently resigned to become Executive Secretary-Treasurer for the American Theological Seminary.

Bro. Gregg has served as pastor of Calvary Church, Bristol, since December, 1942. During this pastorate there have been 611 additions, 417 of which were by baptism.

Mrs. Gregg is the former Pansy Archer of Johnson City. They have two sons.

Preaching the Gospel of Christ Through Radio

Will have Dr. R. G. Lee, Pastor of Bellevue Baptist Church, Memphis, Tennessee, and President of the Southern Baptist Convention, speak during December on the topics:

December 11—"Are You Counting On Tomorrow?"

December 18—"The Meaning of Christmas"

December 25—"Who Is This Christ?"

Stations in Tennessee and their times:

At 2:30 CST

WTJS Jackson

WMPS Memphis

At 3:30 P. M. EST

WJHL Johnson City

WBIR Knoxville

Transcriptions:

WSIX Nashville—4:30 P.M. CST

WDEF Chattanooga—5:30 P.M. EST

Born to Mr. and Mrs. John W. Outland on October 6, a son, Randy Dale. Bro. Outland is pastor of Maple Springs Church, Paris.

—B&R—

Alden Peterson, student at Peabody College, is the new choir director of Third Church, Nashville, Bunyan Smith, pastor.

—B&R—

A son was born to Pastor and Mrs. Bernard Matthews of Linden Church, November 11.

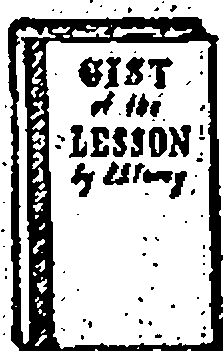
—B&R—

At the first regular session of its Board the new Bradley County Association voted two important dates. They were: That the annual Training Union Week be combined with their preachers' school and that L. B. Cobb, Cleveland, and J. C. Williamson, associational worker, be invited to teach the preachers and that the Training Union Department arrange the remainder of the school.

They voted to hold a Simultaneous Revival in 1950 beginning March 12. Paul Huling is superintendent of evangelism.

GIST of the LESSON

half a century of leadership.



1950 By R.A. Torrey

Insist on the ORIGINAL. Fifty years' supremacy. Never equalled. Condensed thought. Digest and text of lesson. Full exposition. Other features.

Cloth Bound

60¢ Postpaid

F. H. REVELL CO., 158-5th Ave., New York 10

Do You Have A Friend

who would enjoy reading the BAPTIST AND REFLECTOR next year?

A Christmas gift subscription is only \$2.00 for one year.

Or, you can take advantage of the club rate and send 10 friends the BAPTIST AND REFLECTOR for one year for \$15.00.

Baptist and Reflector

149 Sixth Avenue, North
NASHVILLE 3, TENNESSEE



THE REVISED STANDARD VERSION OF THE NEW TESTAMENT

Now in Two New Pocket Sizes

VEST POCKET EDITION

Size, 2 7/8" x 2 3/4"

No. 611—Blue Cloth, boards, colored jacket\$1.00

No. 603—Genuine Leather, Morocco grain, limp, amber edges 2.00

No. 605—Genuine Leather, overlapping covers, red under gold edges 3.00

5/16" thick • Printed on India Paper

No. 690X—Leatheroid, limp style, red under gold edges\$3.00

No. 691X—Genuine Leather, limp style, red under gold edges 3.75

No. 692X—Genuine Leather, overlapping covers, red under gold edges 4.25

No. 693X—Genuine Morocco, Leather lined, limp style, red under gold edges 7.50

No. 694X—Morocco, Leather lined, overlapping covers, red under gold edges 8.50

COAT POCKET EDITION • Size, 4 1/8" x 6 1/4" • 5/16" thick
Printed on India Paper

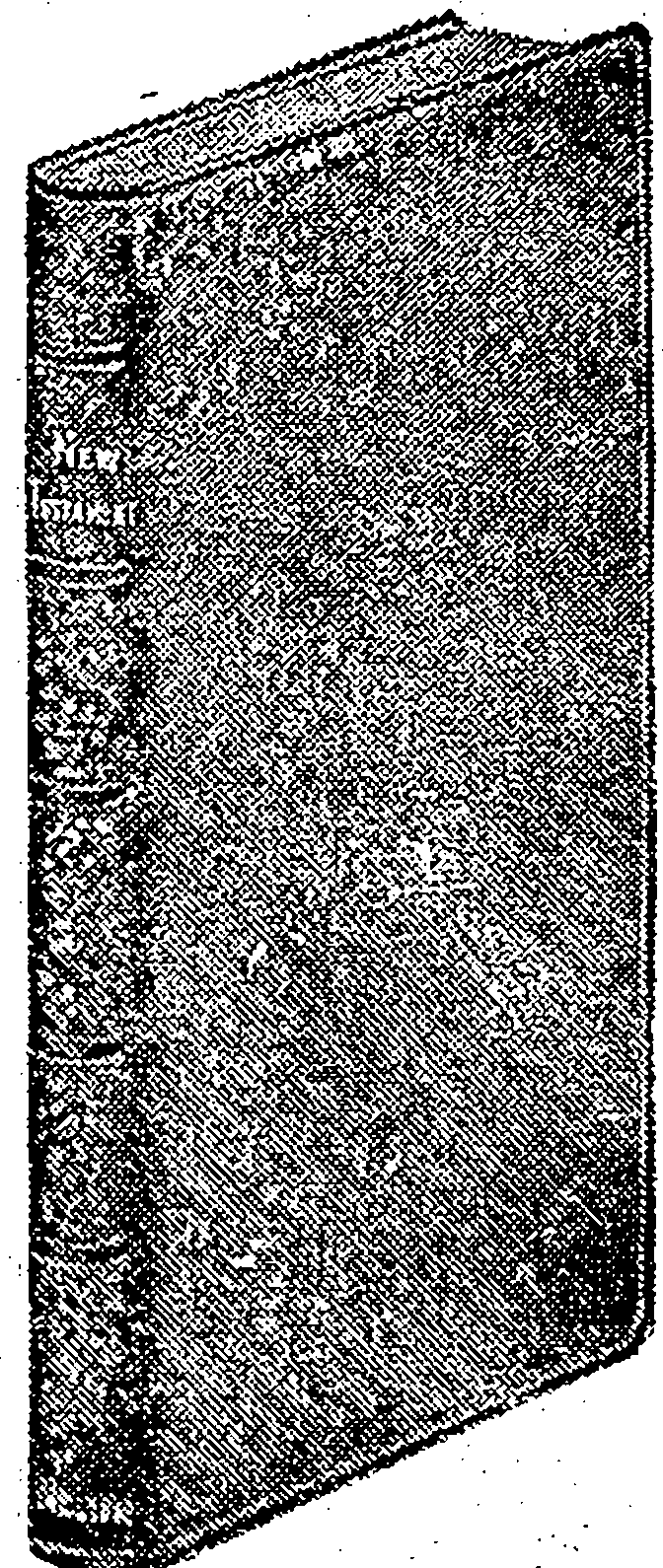
No. 991X—Genuine Leather, limp style, red under gold edges\$5.00

No. 993X—Genuine Morocco, Leather lined, limp style, red under gold edges 9.00

No. 994X—Genuine Morocco, Leather lined, overlapping covers, red under gold edges 10.00

Send your order today

TO YOUR BAPTIST BOOK STORE



Annual Report of the Treasurer

For the Convention Year 1948-1949

Cooperative Program receipts have again reached a new high mark. In each of the last seven years Tennessee Baptists have given more to the Cooperative Program than in the preceding year. This year, for the first time, Cooperative Program receipts have exceeded the million and a quarter mark. Total Cooperative Program receipts amounted to \$1,310,357.00 which is \$75,889.10 more than the \$1,234,467.90 given last year.

Designated gifts amounted to \$592,909.98. Foundation receipts amounted to \$223,644.60 and Retirement receipts were \$94,670.11, making a grand total of all funds of \$2,221,581.69.

Please note that contributions for camps, endowment and enlargement of schools are listed under the head, "Foundation." This is because the Foundation is charged with the responsibility of raising funds for these causes. In checking these reports with your church records please remember that any contributions which were mailed to us during October 1948, but which did not reach our office until November 1948 are included in these reports; and any gifts mailed to us during October 1949, but which did not reach our office until November 1, 1949, are not included in these reports. Such gifts will appear in the report of the first quarter of the Convention year 1949-1950.

Chas. W. Pope, Treasurer

	Cooperative Program	Designated and Reported	Founda- tion
BEECH RIVER			
Bath Springs	.67		
Beacon Mission	4.04		
Bear Creek	59.27		29.00
Bible Hill		9.60	
Bunch Chapel		11.75	
Central Point Mission	2.16		
Chapel Hill	10.00		
Darden		21.69	
Decaturville	35.00	4.35	
Friendship		22.15	
Hopewell			4.00
Huron	7.50	2.50	
Lexington, First	1,420.00	949.34	350.00
Mt. Ararat	33.00		
Mt. Zion	380.00	15.37	
New Fellowship	13.60		
New Hope		20.15	
New Prospect		23.43	
Old Union			12.50
Parsons	2,402.61	323.80	375.50
Pine Grove	46.67	10.40	
Rock Hill	138.27	14.84	13.13
Saltillo		1.33	
Sardis	15.00	16.97	24.00
Sardis Ridge	3.03		10.00
Scotts Hill	50.00	3.50	
Toms Creek		14.00	
Union	193.88	96.91	42.00
Wildersville	27.30	36.50	28.64
Association	1.50	28.63	

	Cooperative Program	Designated and Reported	Founda- tion
BEULAH			
Aldredge		30.00	
Bethel	66.00	25.00	
Beulah	205.42	297.10	99.65
Burnetts Chapel	6.50		
Cottonwood Grove		20.00	
Cypress Creek	111.58	25.50	
Fairview		15.00	
Gibbs		32.00	
Hathaway	90.00	25.00	
Hornbeak		29.95	26.21
Johnson Grove	164.00	200.00	
McConnell	284.60	134.16	128.14
Macedonia	287.97	131.34	38.00
Martin, First	2,400.00	1,358.00	676.36
Mt. Moriah	83.29		
Mt. Olive	197.76	97.05	
ML. Pella	278.10	172.70	29.25
New Concord	55.00	30.00	
New Home	56.23	57.80	5.00
New Salem	275.52	624.41	63.48
Oblon	101.86	318.09	50.00
Pleasant Grove	10.00	90.00	
Pleasant Hill No. 1		42.12	
Pleasant Hill No. 2		30.00	
Reelfoot	120.00	66.86	100.00
Ridgely	1,146.03	104.00	428.81
Sharon	52.37	62.87	
South Fulton	120.00	138.40	5.00
Tiptonville	331.09	95.62	76.00
Troy	116.00	44.69	15.00
Union City	6,200.00	1,414.98	1,479.48
Walnut Log		11.35	
Woodland Mills	509.03	275.04	80.23
Wynnborg	40.70	110.05	110.00
Association		26.76	32.36

	Cooperative Program	Designated and Reported	Founda- tion
BIG EMORY			
Beech Park	6.26	50.00	
Bethel		24.00	
Big Emory	55.44	32.00	
Caney Ford	47.00	88.00	
Cardiff		29.85	
Chestnut Mission	17.28		
Childs Memorial	222.60	33.65	
Clax Gap	5.47	37.96	
Crab Orchard	5.20	21.57	
Creston	5.00		
Crossville	1,279.80	314.17	39.60
Elizabeth St. Mission	9.92		
Emory Gap	7.03		
Emory Heights	75.00	100.00	
Emory River	91.10		

	Cooperative Program	Designated and Reported	Founda- tion
BIG HATCHIE			
Eureka	258.32	85.36	
Halley's Grove	45.00	79.00	
Kingston	844.95	239.00	
Lancing		4.00	
Liberty	294.39	69.33	
Middle Creek	49.50	45.67	
Mossey Grove		28.00	
Mt. Teman	7.50	2.50	
North Rockwood	17.00		
Oakdale	1,200.00	87.00	
Oak Hill	66.93	62.03	
Orchard View		23.10	
Petros	219.59	165.36	5.00
Pine Orchard		10.00	
Piney	236.30	10.00	
Pleasant Grove	45.00		
Pond Grove	9.55	45.38	
Riggs	149.64	50.00	
Riverside	444.11	94.29	
Rockwood	2,239.24	247.41	
Slate Springs		9.52	
South Harriman	685.50	194.86	
Sugar Grove	2.50	12.00	
Sunbright	10.94	15.35	
Trenton St.	5,246.60	501.35	60.67
Union		60.00	
Walnut Hill	1,027.80	346.84	156.00
Wartburg	168.50	126.28	
Westel	55.82	45.52	
White Oak	16.20	42.57	
Whites Creek	42.00	25.00	
Association		15.70	

	Cooperative Program	Designated and Reported	Founda- tion
BLEDSON			
Bledson Creek	44.04	60.00	10.00
Cedar Grove Mission	9.40		
Chestnut Grove	122.76	19.11	
Corum Hill	103.14		51.00
Cottonwood	26.57	29.35	
Dixon Creek		100.50	112.98
Fountain Head	60.62	59.46	2.00
Friendship	82.50	66.30	48.89
Gallatin	1,400.00	371.35	5.00
Hartsville	1,383.99	347.35	454.42
Hillsdale	14.10		60.00
Hopewell	167.09	160.91	69.50
Mitchellville	143.17	14.17	168.57
New Hope	33.05	37.25	
Portland	2,186.62	370.31	
Station Camp	4.07	.50	
Westmoreland	15.43	3.79	
Zion			23.98
Association	11.20	33.73	

	Cooperative Program	Designated and Reported	Founda- tion
BLEDSON			
Bledson Creek	44.04	60.00	10.00
Cedar Grove Mission	9.40		
Chestnut Grove	122.76	19.11	
Corum Hill	103.14		51.00
Cottonwood	26.57	29.35	
Dixon Creek		100.50	112.98
Fountain Head	60.62	59.46	2.00
Friendship	82.50	66.30	48.89
Gallatin	1,400.00	371.35	5.00
Hartsville	1,383.99	347.35	454.42
Hillsdale	14.10		60.00
Hopewell	167.09	160.91	69.50
Mitchellville	143.17	14.17	168.57
New Hope	33.05	37.25	
Portland	2,186.62	370.31	
Station Camp	4.07	.50	
Westmoreland	15.43	3.79	
Zion			23.98
Association	11.20	33.73	

	Cooperative Program	Designated and Reported	Founda- tion
CAMPBELL			
Avenue	306.19	44.00	
Bear Wallow		92.00	
Big Creek Gap		28.00	
Carville	139.84	166.88	
Cedar Hill	57.50	69.30	
Chaska		8.70	
Clear Branch		24.50	
Cumberland View		30.31	
Demory	10.00	16.00	
Elk Valley	173.98	9.76	
Elm Grove	10.00		
Ford Town		17.00	
Glade Springs		10.45	
Grantsboro		13.50	
Jacksboro	679.43	127.37	57.97
LaFollette	3,306.63	655.64	25.00
Lakeview	67.26	60.70	1.50
Little Cove Creek	115.00	39.19	
Macedonia		26.19	
Morley	256.31	52.12	
Mt. Paron		45.00	
Newcomb	40.00		
North Cumberland Mission	140.50	8.21	
Oak Grove	20.10		
Pleasant Grove		43.74	
Round Rock		69.68	
Sunny Hill		5.00	
Vaspar	30.00	53.29	
Victory		9.50	
West LaFollette	76.00	72.00	
Westbourne	10.00	5.00	
White Oak		11.50	
Whitman	10.50	5.50	
Association		15.00	

	Cooperative Program	Designated and Reported	Founda- tion
CARROLL-BENTON			
Atwood	63.34	105.00	25.00
Bruceton	474.63	156.57	122.00
Camden	658.10	315.82	352.16
Chalk Level	5.75	14.75	
Concord	38.11		
Enon	6.00	12.00	
Eva	102.96	15.68	39.10
Fairview	60.00	6.00	
Hopewell	30.09	26.59	12.00
Howse	49.48	36.65	
Huntingdon	1,217.16	365.42	488.06
McKenzie	600.00	51.85	100.00
Missionary Grove	76.25	70.39	60.00
Mt. Nebo	3.00	40.60	30.00
Prospect	751.17	711.70	300.20
Trace Creek	230.52	137.07	39.28
Trezevant	1,000.44	400.19	556.77
Union Academy	96.78	79.75	
Association		39.50	

	Cooperative Program	Designated and Reported	Founda- tion
CHILHOWEE			
Alcoa	967.11	169.70	
Allegheny		3.30	
Armona	385.00	100.32	11.90
Beech Grove	431.77	277.29	71.00
Bethel	370.92	47.00	13.75
Blanchfield	2.50		
Broadway	1,043.06	111.83	5.00
Cades Cove		70.44	
Calvary	1,267.70	239.45	16.00
Cedar Grove	537.15	265.44	450.30
Centenary	84.00	67.04	
Central	71.00	56.33	
Central Point	13.48	107.88	
Chilhowee	660.19	217.25	66.50
Cold Springs	68.65	23.00	
Dotsons Chapel	10.00	10.00	
East Maryville	242.96	61.67	
Ellejoy		37.39	
Everett Hill	1,178.17	240.40	50.00
Forest Hill	22.00	115.62	6.00
Four Mile	16.00		
Friendsville		26.37	
Grandview	42.13	36.14	43.40
Greenback Memorial	19.00		
Happy Valley	8.45	13.12	
Kagleys	180.00	15.50	
Liberty	12.25		
Marvill, First	12,448.01	5,671.58	837.82
Millers Cove		10.00	
Mt. Carmel	50.50	6.00	
Mt. Lebanon	1,846.10	560.25	258.00
Mt. Zion	2.31		
New Hopewell	446.03	263.60	6.50
Oak Street	100.00	33.25	
Oak View	68.20	50.27	20.00
Old Chilhowee	80.00	15.00	
Piney Grove	120.20	176.60	60.00
Piney Level	137.50	72.00	
Pleasant Grove	1,349.05	479.84	
Prospect	247.65	121.92	10.00
Providence		38.15	
Rockford	41.00	55.76	
Rocky Branch		71.49	
Salem	15.00	28.50	
Six Mile		28.63	
Springview	87.66	17.05	
Stock Creek	583.22	142.76	51.00
Union Grove	2.17	65.00	
West Maryville	164.95	73.68	30.00
Wildwood	281.52	71.47	
Association	499.34	29.00	

	Cooperative Program	Designated and Reported	Founda- tion
CLINTON			
Andersonville	478.66	173.74	21.94
Beech Grove	477.95	78.60	
Bethel	319.50	62.00	58.00
Black Oak	718.84	262.89	41.00
Blowing Springs	30.75	57.22	
Briceville		44.89	
Cherry Bottom	80.00	21.00	
Clear Branch	214.11	32.11	15.00
Clinch River		22.33	
Clinton, First	7,434.88	457.83	106.41
Clinton, Second	841.91	135.76	
Clinton, South	186.12	101.78	15.00
Cumberland Mountain		76.05	
Dutch Valley	29.00	15.00	
Edgemore	3.13	10.00	
Farmers Grove		45.25	
Frost Bottom	10.00	29.37	
Glenwood	1,170.86	90.18	44.19
Grace	5.67	9.00	
Highland View	3,372.99	253.46	63.20
Hillvale	8.00		
Island Ford	1.92	4.55	
Lake City, First	507.75	128.01	15.00
Lake City, Main St.	463.34	73.65	5.00
Laurel Grove	2.40		
Longfield	62.00	92.65	
Moore's Chapel		75.00	
Mountain View		18.00	
Mt. Zion		2.50	4.50
New Mountain View		27.40	
New Pilot	.30		
New Salem	7.70	25.00	
North Clinton	2.62		
Oak Ridge, First	7,442.69	1,051.91	761.83
Oliver Springs	723.21	134.50	
Pine Hill	2.24		
Pleasant Hill	6.50	66.04	5.00
Pleasant View	13.40	63.25	15.00
Poplar Creek	119.38	57.70	
Red Hill	50.00	5.27	
Riverview		11.50	
Robertsville	3,829.76	876.35	170.00
Sourwood		28.02	
Spring Hill		19.50	
Union Valley		10.00	
Willow Brook		10.71	
Windrock		27.50	
Wolf Valley	10.00		
Zion	181.85	54.25	25.00
Association		10.00	25.00

CONCORD			
Barfield	132.69	81.80	45.34
Bradley Creek	158.07	117.44	28.25
Christiana	114.33	88.83	51.25
Concord	101.89	68.19	
Eagleville	355.75	228.25	135.40
Fellowship	120.09	70.81	39.00
Florence	40.00	10.50	32.00
Holly Grove	166.71	33.05	
Lascassas	307.55	240.57	
Midland	90.00		7.00
Milton	270.04	269.65	225.50
Mt. Carmel		37.00	24.44
Mt. Herman	7.52	155.48	
Mt. Pleasant	12.00	84.77	54.56
Mt. View	190.44	112.13	94.00
Murfreesboro, First	8,030.03	1,162.00	810.10
New Hope	6.91	40.30	57.00
Powells Chapel	243.45	232.67	
Republican Grove		84.13	
Smith Springs		25.00	93.80
Smyrna	570.03	283.16	41.05
Taylor's Chapel	227.00	64.85	
Third	460.69	35.78	
Walnut St. Mission	17.92	15.00	
Wayside	5.50	34.00	
Westvue	52.70	89.50	
Whitsetta	157.50		25.25
Woodbury Road		48.85	9.26
Association		35.00	

CROCKETT			
Alamo	2,211.54	195.64	142.00
Barkers Chapel	130.92	5.50	20.00
Bells	1,336.53	427.76	312.10
Calro		60.95	50.00
Cross Roads	97.01	63.95	
Friendship	714.17	459.48	20.75
Gadsden	151.90	34.55	
Johnsons		25.00	
Maury City	212.85	54.77	60.00
Midway	5.00	34.85	
Providence	10.14	44.00	50.66
South Fork	15.00	20.00	
Walnut Hill	60.00	86.17	5.00
Association		15.00	

CUMBERLAND			
Alva	11.00		
Blooming Grove	90.58	141.69	72.90
Calvary	26.39	30.59	11.00
Clarksville, First	9,985.17	1,208.26	2,010.93
Clarksville, Second	308.57	113.24	
Cross Creek	10.00	68.80	81.37
Cumberland City	65.00	165.00	
Dotsonville	31.00	63.77	38.50
Erin	55.65	48.59	35.00
Gracey	26.00	178.06	15.00
Harmony	71.50	89.75	41.00
Hollins Chapel	50.00	4.66	15.00
Immanuel		50.00	
Kenwood		11.53	

	Cooperative Program	Designated and Reported	Founda- tion
Kirkwood	90.46	155.96	46.10
Little Hope	276.73	328.32	10.00
Little West Fork	90.00	80.00	35.00
Mt. Hermon	215.07	123.12	213.00
New Providence	414.47	127.50	1.00
Pleasant View	29.00	12.13	
Spring Creek	370.00	856.75	180.00
Tennessee Ridge	43.94	15.10	
Association		34.00	

CUMBERLAND GAP			
Alanthus Hill	15.00	15.00	
Bethel	4.22		
Big Springs Union	10.00		
Blairs Creek	41.00	28.25	
Butchers Chapel	3.36		
Carrs Chapel	13.15		
Cave Springs	12.60		
Cedar Fork	3.75	10.40	
Cedar Grove	1.85	26.00	
Chadwell Station	10.00	15.75	
Chittums Chapel	5.00		
Cumberland Gap	226.60	331.02	15.00
Fairview	3.39	43.75	
Forge Ridge	12.15		
Friendship	1.00	1.05	
Gap Creek	20.00	52.58	
Goin Chapel	10.00	8.39	
Greers Chapel	126.00	55.40	
Harrogate	401.19	119.89	18.14
Haynes Flat	14.61		
Head of Barren		5.75	
Indian Creek	13.00		
Liberty		24.70	
Liberty Hill		6.00	
Little Mulberry		45.00	
Midway	12.00	12.05	
Monroe (Mich.)	739.44	198.07	
Mt. Gilead	15.60	26.00	
Mt. Pleasant	2.07	1.25	
Mt. View	9.80		
Mt. Zion	11.60	11.30	
Myers Grove	6.20	4.60	
New Hope	2.50		
New Salem	15.47	28.70	
New Tazewell	115.69	111.40	26.00
Oak Grove		8.00	
Pleasant View	30.11		
Pump Springs	4.60	2.76	
Riley Memorial	10.00		
Riverside		10.60	
Riverview	1.56		
Rob Camp	1.00		
Shawancee	36.00	37.33	.50
Springdale		50.54	
Sugar Grove		10.00	
Sumey Bridge	3.11		
Tazewell	127.68	63.23	20.00
Underwood	1.60	5.04	
Walnut Hill	53.37	63.00	
Wolfenbarger		10.00	
Youngs Chapel	4.21		
Association	14.61	52.88	50.00

CUMBERLAND PLATEAU			
Boswell		86.37	
Clear Creek		10.00	
Lakeview	25.00		
Pilot Mountain	29.00	25.00	
Rankins Chapel		5.00	

DUCK RIVER			
Air View	26.50	10.00	9.35
Altamont	15.72	5.00	12.17
Beech Grove	12.00	15.77	10.00
Cowan	1,077.92	365.07	
Cross Roads	69.16	7.07	15.00
Decherd		57.20	5.16
Ella Ransom Mission		5.61	
Estill Springs	145.97	25.20	62.00
Huntland	100.63	25.81	
Keith Springs	5.00		
Liberty		4.00	8.00
Magness Memorial	2,059.66	532.39	843.00
Manchester	447.14		242.50
Maxwell	67.50	41.25	50.00
Palmer		2.05	5.00
Prairie Plains	36.80	36.25	57.00
Rutledge Falls	12.00	25.63	67.00
Spring Creek			5.00
Tracy City	189.82	74.17	67.00
Tullahoma	1,879.17	469.49	10.00
Welcome Mission	10.00		
Winchester	1,610.45	467.88	35.00
Association		215.00	

DYER			
Beech Grove	30.00	34.50	25.00
Bruces Chapel		22.00	
Calvary Hill	217.65	46.60	88.00
Curve	20.00	35.00	
Dyersburg	6,073.01	1,599.63	355.35
Elon			35.00
Emmanuel	4.00	11.00	
Emmaus		11.46	13.00
Enon	146.11	36.56	7.00
Fairview	105.37	68.46	
Finley	42.25	127.32	40.00
Fowlkes	196.00	120.00	
Gates	18.00	48.36	
Halls	1,958.70	267.07	66.25
Harmony	182.77	81.96	
Hawthorne Chapel Mission	20.45		

	Cooperative Program	Designated and Reported	Founda- tion
Hillcrest	632.35	95.68	16.00
Lenox	54.95	38.42	25.00
McCulloughs Chapel	3.78	10.00	
Macedonia		24.66	
Marys Chapel	6.00	23.55	
Midway		60.75	
Mill Town Mission	3.00		
Miston	30.00	6.25	
Mt. Tirzah	299.12	74.96	
Mt. Vernon	40.00	44.14	
Newbern	664.55	270.99	200.00
Parrish Chapel	41.16	71.67	21.00
Ro Ellen	31.58	57.00	
Southside	128.95	21.10	50.00
Spring Hill	22.73	58.98	
Trimble	374.53	155.66	100.00
Williams	43.38	102.65	
Woodville	133.10	4.00	
Association		16.62	

EAST TENNESSEE			
Bethel		35.67	
Calvary	28.00	25.00	
Cave Hill		13.00	
Clay Creek	51.41		
Deep Gap		22.00	
Del Rio	70.63	38.00	51.41
Denton	37.00	89.64	
Dutch Bottom		10.00	
Forest Hill	254.13	265.18	
French Broad	3.62	5.00	
Hales Chapel		15.00	
Holders Grove	20.00		
Liberty Hill	24.30		
Mannings		50.00	
Newport, First	2,616.15	1,768.55	266.71
Newport, Second	637.15	128.46	50.00
Pigeon Valley		2.00	
Pine Springs		60.00	
Piney Grove		28.00	
Pleasant Grove		27.85	
Point Pleasant	150.00		
Rankin		35.00	
Rays Chapel		67.50	
Shady Grove	3.53		
Swansylvania			25.00
Union	7.00	36.00	
Union Valley	3.37		
West End	176.85	25.00	

ENON			
New Salem			15.00
Red Boiling Springs	29.89	10.00	
Union		15.00	

FAYETTE			
Feathers Chapel		6.00	15.00
Galloway		41.25	22.00
Hickory Grove	40.00	37.00	
Kirk	10.50		
Liberty	3.00	2.00	
Morris Memorial	394.26	311.15	69.80
Mt. Moriah	230.30	144.33	5.00
Oak Grove		10.00	
Oakland	10.00	5.25	
Rossville	332.75	321.71	189.05
Somerville	680.99	218.18	286.49
Williston	229.55	146.71	11.00
Association		32.81	24.08

GIBSON			
Antioch	994.61	201.92	223.90
Beech Grove	119.56	14.55	26.25
Bethel "H"	153.44	93.15	
Bethel "Y"	117.06	56.74	
Bethlehem	448.75		
Bethpage	150.00	125.06	25.00
Bradford	1,025.47	213.03	13.27
Center	307.44	68.00	
Chapel Hill	215.98	113.14	5.00
China Grove	245.16	363.13	62.00
Clear Creek	231.70	124.32	
Dyer	1,736.78	161.47	227.82
Eldad	400.00	136.06	
Fruitland	47.92	53.90	25.00
Gibson	1,205.09	305.36	
Hickory Grove	772.34	175.66	
Humboldt	7,391.94	713.10	1,632.23
Idlewild	89.95		30.50
Kenton	440.21	448.52	166.60
Laneview "K"	50.00		
Laneview "T"	132.06	51.85	15.33
Lathams Chapel	168.00	152.75	25.00
Lavinia	53.48	91.76	50.00
Medina	2,008.11	316.80	1.00
Midway	69.92	99.07	
Milan	4,300.00	1,083.01	1,071.11
Mt. Pisgah	49.31		
Mt. Pleasant	61.08	26.50	
New Bethlehem	243.50	96.47	50.00
New Hope	160.00	127.37	25.00
Northern	50.00	33.82	25.00
Oak Grove	80.38	47.87	50.00
Oakwood	260.00	120.03	25.00
Poplar Grove		101.10	66.67
Poplar Springs	85.45		
Rutherford	491.48	253.42	350.00
Salem	788.07	90.62	146.00
Trenton	1,600.00	1,183.87	1,705.00
Walnut Grove	303.63	65.59	
White Hall	279.07	88.53	115.00
Association		25.00	50.00

	Cooperative Program	Designated and Reported	Founda- tion
GILES			
Bradshaw	4.00	17.50	
Hannah	16.29	16.00	
Liberty Hill	20.00	17.70	
Lynnville	7.15	13.53	4.05
Minor Hill	175.00	103.23	36.26
New Hope	146.75	123.19	43.50
New Zion		34.33	
Oak Grove		6.30	1.60
Pulaski	915.58	279.85	172.98
Rock Springs	20.00	15.00	5.21
Scotts Hill	132.65	25.68	40.35
Shores		18.88	
Thompsons	50.20	18.49	25.00
Union Hill	25.00	14.18	
Union Valley		12.20	29.00
Welcome Valley		10.00	
Wheelerton		12.33	
Association		29.30	15.00

GRAINGER			
Adriel	2.00		
Avondale	55.50		
Barnards Grove	71.00	62.20	
Bean Station	25.00	49.05	
Block Springs	8.74	21.21	
Blue Springs	202.81	136.36	
Bridgeport	5.00	15.00	
Buffalo	204.00	114.60	
Byerleys		27.22	
Central Point	23.15	42.79	
Dutch Valley		10.00	
Elm Springs	2.00	18.50	
Fairview	69.47	11.79	
Head of Richland	14.06	10.76	
Holston Springs	74.61	20.90	
Indian Ridge	164.52	96.55	
Little Valley	20.00	21.63	
Locust Grove	19.67	94.50	
Mitchell Springs	16.00	48.05	
Mount Eager	21.65		
Mouth of Richland	1,372.78	527.50	
Narrow Valley	149.12	45.42	
New Blackwells	27.26	74.25	
New Corinth		26.66	
New Prospect	2.00	33.52	
Neeton	5.00	6.00	
Oak Grove		19.39	
Oakland	140.80	80.74	5.00
Powder Springs	45.53	45.26	
Puncheon Camp	69.40	57.00	
Red House		10.00	
River View	2.00		
Robert's Chapel	19.00		
Rutledge	550.33	84.96	
Sunrise	90.54	34.75	
Tampico	2.52		
Thorn Hill Mission	4.00		
Washburn	97.07	79.53	
Association		12.95	

HARDEMAN			
Bethlehem	10.00		5.50
Bolivar	2,938.64	790.30	71.40
Ebenezer	27.41	72.81	10.85
Essary Springs	5.55	7.53	
Grand Junction	1,413.25	496.72	15.00
Hatchie	25.00	42.61	
Hickory Valley	30.12	73.60	35.00
Hornshy	125.00	164.00	5.00
Middleburg	109.60	95.33	9.25
Middleton	107.50	79.64	11.00
Midway	5.00		
New Bethel	25.00		
New Union	185.94	17.72	75.00
Parrans	72.57	336.05	
Pocahontas	6.93	16.00	
Porters Creek	15.00	11.00	9.55
Rocky Springs	29.00		
Samsbury	287.05	69.91	
Silterton	149.96	30.52	
Tecum	391.76	129.09	50.15
West Memorial	14.76	25.00	
Whiteville	938.67	403.69	253.71
Association	22.90		36.00

HIWASSEE			
Chapmans Grove	20.00		
Concord	20.00		
Hopewell		57.00	
Laurel Bluff	6.00		
Maple Grove	1.50		
Old Friendship	5.00	23.00	
Ozone	5.00		
Paint Rock	1.85	51.60	
Pisgah	13.65		
Pleasant Hill	1.25		
Salem	2.10		
Shiloh	70.33	2.00	
Ten Mile	7.64		

HOLSTON			
Antioch	523.15	160.30	5.00
Ashbury	51.03	6.37	
Balleveon	50.00	75.00	
Bethany	97.66	32.25	
Bethel	101.93	50.00	
Beulah	135.54	193.14	
Bloomington	15.00	20.80	
Bloomville	57.09	72.46	5.10
Bluff City, First	727.91	217.36	10.00
Bluff City	611.55	97.69	

	Cooperative Program	Designated and Reported	Founda- tion
Boones Creek			
Boones Creek	30.00	39.25	
Buffalo Ridge		100.00	
Calvary "B"	3,223.34	1,231.19	
Calvary "E"	1,400.00	340.11	25.00
Calvary "JC"		6.36	
Calvary "K"	1,452.00	200.93	
Cedar Grove	110.00	12.00	38.00
Cherokee	145.00	221.50	
Cherry Grove	5.00	14.78	
Chinquapin	751.00	10.00	
Clear Branch	77.45	17.52	
Coffee Ridge	4.00	4.00	
Double Springs	195.41	42.76	
East Side	13.96		
Embreville	3.96		
Enon		54.66	
Erverrise Union		20.09	
Erwin, First	6,876.17	2,226.59	36.50
Erwin, Ninth St.	1,000.80	155.15	
Fall Branch	1.00.00	69.40	32.50
Fall Creek	71.91	110.96	
Fall St. Chapel		2.85	
Flax Pond	138.41	24.14	
Fordtown	185.94	172.93	40.00
Fort Robinson	120.00		10.00
Glenwood	1,221.00	145.04	
Gravel Hill		9.00	
Greenville		17.33	
Greenville, First	1,219.98	507.70	60.50
Greenville, Second	24.00	56.00	
Harmony	90.33	81.85	
Higgins	4.24	2.00	
Holston	50.00	54.25	
Holston Valley	55.00	55.35	3.00
Hulen Avenue, Mission	64.19		
Johnson City Central	11,500.00	5,074.23	324.62
Jonesboro, First	2,598.12	885.34	
Jonesboro, Second		20.75	
Kingsport, First	11,006.11	1,777.41	342.60
Litz Manor	320.07	92.86	
Long Island		27.34	
Lovelace		23.19	
Lynn Garden	1,080.00	661.33	203.99
Midway	107.50	25.11	
Mill Creek		28.46	
Mountain View	62.19	39.02	
Mr. Holston		25.00	
Mr. Zion	6.00	11.55	.50
Muddy Creek	13.50	25.28	
New Glenwood	7.25	1.50	
New Hope	25.00		
New Lebanon	66.35	37.20	
New Salem	12.00		
New Victory	200.00	136.50	
Oakdale	30.00		
Oak Grove	35.10		
Oak Hill	218.00	264.62	
Philadelphia	137.09	55.49	
Pine Crest	571.75	111.55	5.97
Piney Flats		72.59	
Pleasant Grove	20.00	66.00	
Roan Hill	313.03	11.25	
Shady Grove		38.75	
Shallow Ford	176.00	67.82	
Snows Chapel	73.60	69.32	5.00
Solemons		5.00	
Southside	16.00	130.93	
Springdale		14.00	
State Line	211.00	35.49	12.15
Sullivan	244.10	156.00	
Sulphur Springs	549.30	58.16	
Summersville		12.12	
Sunnyside		64.80	
Telford	122.69	101.40	
Temple	1,770.51	196.79	
Tennessee Avenue	95.50	99.10	
Unaka	869.24	476.73	
Unicoi	10.00	75.25	
Union	140.00	29.42	
Virginia Avenue	1,169.69	102.96	25.63
Walkers Fork		16.65	
Westley Hgts.	28.37		
Westview	20.00	52.40	
Woodlawn	759.63	135.07	
Association	7.50	193.00	45.89

HOLSTON VALLEY			
Beech Creek	4.06	13.50	
Beech Grove		10.00	
Bethel	5.76		
Big Creek	48.00		
Cane Creek		16.00	
Cave Springs	8.65	21.25	
Choctaw	14.00	102.50	
Christian Bend	9.60		
Church Hill		80.21	
Compromise	53.15		
Fairview	24.00	11.00	
Gills Chapel	236.25	69.00	
Henards Chapel	131.00	117.66	30.38
Hickory Cove	20.00	127.75	
Hewes	3.93	3.00	
Independence	9.20		2.00
Lone Oak		6.06	
Longs Bend	5.00	1.50	
Looneys Chapel		40.00	
Maple Hill	5.00	25.00	
McClouds	12.16	25.00	
McPheeters Bend	910.23	170.23	59.40
Mooreburg	225.00	53.67	
Morrisetts Chapel	45.00		
New Salem	10.00		
North Fork	8.49		
Oak Grove	221.00	28.59	
Persia	52.50	53.99	32.20

	Cooperative Program	Designated and Reported	Founda- tion
Piney Grove			
Piney Grove	22.30		
Plum Grove	4.80	10.00	
Prices Grove	2.25	6.00	
Providence	18.60	30.60	
Rogersville	3,659.96	940.87	225.00
Shady Grove	100.00		
Surgoinsville	321.00	318.59	53.38
Tunnell Hill	13.06	26.44	
Association		15.00	25.00

INDIAN CREEK			
Bethel	7.80	16.17	
Bethlehem	15.59	97.78	
Cedar Grove		9.00	
Collinwood	50.20	16.00	
Flat Gap Mission	3.00		
Friendship		.70	
Green River	48.65	62.55	
Hopewell	13.62	1.75	
Leatherwood	28.10	8.29	11.13
Liberty	64.00	23.75	
Lotts	153.06	48.68	15.00
Memorial	5.00		
New Harmony	40.90	12.68	
Olive Hill	33.11	23.60	2.75
Philadelphia	161.58	52.65	
Rav School Mission	.75	4.31	
Savannah	120.00	59.76	20.00
Sharon	3.00	1.00	
Southside Mission	13.26	6.80	
State Line	1.00		
Turkey Creek	77.61	42.85	
Waynesboro	286.38	251.43	
Association		51.90	

JEFFERSON			
Beaver Creek	48.10	20.25	
Buffalo Grove	239.93	47.27	10.85
Dandridge	452.24	367.04	105.45
Dumplin	1,045.41	87.97	116.47
Flat Gap	130.37	65.45	15.48
French Broad	75.00	80.00	
Good Hope	5.00	25.00	
Jefferson City, First	12,696.86	2,604.44	84.18
Mansfield		5.00	
Mill Spring	531.92		
Mountain View	13.00	32.00	
Nances Grove	208.16	168.48	
New Market	1,174.35	128.73	
Nina	71.10	5.00	
Northside	153.68	119.18	
Piedmont	1,022.97	66.99	25.89
Pleasant Grove "H"		41.40	
Pleasant Grove "P"	81.13	33.15	
Rocky Valley		40.16	
Talbott	91.81	87.89	
White Pine	1,013.25	339.09	109.00
Association		88.40	

JUDSON			
Charlotte	141.95	.50	5.16
Fairview	4.51	16.00	
Gum Springs		85.53	
McFwen	36.07	39.75	15.00
Maple Grove		7.50	
Mr. Zion		15.00	
New Hope	24.05	15.65	25.00
Oak Grove	50.00	15.37	
Parkers Creek		4.00	
Pleasant Ridge	25.00		
Sylvia	107.97	11.80	
Walnut Grove		10.00	
Waverly	11.57	4.20	
Association			3.75

KODAK ROLL FILM
DEVELOPED AND
8 • HOBBY SIZE PRINTS
FREE MAILING ENVELOPES
GIANT REPRINTS-4c each
35
IN COLOR
HOBBY-PHOTO SERVICE
PORTSMOUTH, VA.

HOLMAN
New Testaments
For an appreciated gift, or for
your own use, be sure the Testa-
ment you buy is
A Holman Edition
Holman's 110 years' experience
assures you perfect satisfaction.
Beautiful and durable, Holman
Testaments from \$1.65 up are
for sale at your
BAPTIST BOOK STORE

	Cooperative Program	Designated and Reported	Founda- tion
KNOX			
Alice Bell	157.67	100.27	26.20
Arlington	7,501.55	2,775.58	196.50
Bali Camp	36.00	25.00	13.00
Beaumont Ave.	1,053.60	4.00	—
Beaver Dam	918.58	105.50	—
Bell Ave.	9,287.09	723.70	15.00
Belmont Hgts.	528.53	205.65	21.25
Black Oak	156.11	14.25	21.30
Bon View	89.14	26.88	—
Broadway	15,000.00	2,681.23	3,137.00
Calvary	1,368.75	130.83	1.00
Central, Bearden	1,024.85	462.53	—
Central, Fountain City	14,173.91	2,484.90	725.55
Churchwell Avenue	15.25	99.97	—
City View	33.00	64.05	7.53
Clear Springs	171.90	52.00	—
Corryton	1,128.80	259.40	—
Crichton	404.98	98.60	—
Deaderick Ave.	1,650.88	224.95	—
Ebenezer	15.00	35.00	—
Elm Street	199.10	25.43	51.02
Euclid Ave.	974.35	265.77	100.00
Fair Havens	80.09	—	—
Fifth Ave.	18,525.71	6,114.63	604.12
Knoxville, First	52,755.92	10,060.85	2,326.03
Fort Sanders	673.62	107.39	—
Fountain City, First	1,843.36	156.62	155.00
Gallahers	324.00	58.50	—
Gayland Heights	150.00	107.00	—
Gillespie Ave.	694.50	379.20	25.00
Glenwood	958.00	95.95	—
Grace	241.00	70.51	—
Grandview Mission	—	10.65	—
Grassy Valley	10.00	7.30	—
Grove City	605.11	20.00	—
Grove Heights	—	15.00	—
Grove Hill	25.00	113.63	—
Highland	315.54	72.35	—
Holston	50.00	78.00	—
House Mountain	—	114.92	—
Immanuel	2,052.35	206.26	—
Inskip	2,658.32	75.17	—
Island Home	2,621.94	598.08	110.91
John Sevier	273.35	103.38	19.80
Lincoln Park	11,112.28	1,362.39	180.00
Little Flat Creek	60.02	57.27	—
Lonsdale	4,640.26	330.85	221.00
Loveland	73.21	36.44	—
Lyons Creek	516.84	63.00	—
Marble City	171.00	49.60	5.00
Marbledale	22.83	45.00	—
Mars Hill	—	36.70	—
Mascot	439.15	172.06	49.20
McCalla Ave.	7,593.26	512.64	27.20
Meridian	382.27	211.82	21.32
Middlebrook Heights	.75	.25	—
Middlebrook Pike	5.97	—	—
Morgan	3.82	3.09	—
Mt. Carmel	68.49	64.79	10.00
Mt. Harmony	78.71	182.17	36.25
Mt. Olive	1,500.00	623.17	159.00
Mt. View	642.90	12.00	—
New Salem	9.56	—	—
North Hills	241.11	30.00	—
North Knoxville	—	111.66	—
Northside	—	25.00	—
Norwood	—	10.00	—
Oak Hill	61.37	50.61	—
Oakwood	3,712.02	374.83	—
Oglewood	31.63	—	—
Park City	387.91	31.05	—
Park Lane	40.00	35.86	25.00
Piney Grove	—	102.00	—
Powell	433.09	207.29	13.88
Riverdale	1,507.94	41.79	75.43
Riverview	411.20	41.21	—
Rocky Hill	70.20	88.23	—
Roseberry	296.95	141.59	—
Salem	561.37	76.05	13.50
Seven Islands	57.00	—	—
Sevier Heights	988.20	249.89	—
Sharon	351.00	92.60	—
Skyline Drive	55.92	—	—
Smith Grove	45.17	7.00	6.00
Smithwood	4,680.70	638.44	99.53
South Knoxville	6,399.51	626.00	239.69
Stony Point	47.14	—	—
Straw Plains	856.72	104.05	—
Tennessee Ave.	714.60	2.00	—
Third Creek	268.50	148.25	—
Thorn Grove	96.56	20.00	10.00
Three Points	5.00	—	—
Union	50.00	100.00	—
Unity	151.75	43.96	—
Valley Grove,	—	—	—
Chapman Hwy.	583.95	201.50	28.00
Valley Grove	44.00	97.80	—
Washington Ave.	352.75	85.86	—
Washington Pike	1,875.17	124.63	41.75
West End	218.37	116.95	—
West Lonsdale	45.00	53.92	—
Association	—	630.97	—

LAWRENCE			
Blooming Grove	1.40	50.00	—
Bonnerstown	97.16	37.00	50.00
Brace	—	6.18	—
Ethridge	55.05	82.35	66.75
Eva's Chapel	—	8.50	5.00
Five Points	86.48	15.00	13.75
Gum Springs	45.00	15.00	—
Iro City	86.00	167.45	—
Lawrenceburg	1,801.33	334.03	338.80
Leoma	64.97	43.38	—

	Cooperative Program	Designated and Reported	Founda- tion
Liberty Grove	64.51	11.55	—
Lone Star	—	2.00	—
Loretta	17.00	79.57	32.00
Macedonia	—	—	10.00
Mars Hill	54.20	—	18.00
Mt. Horeb	106.11	140.21	100.00
Oak Hill	19.33	6.31	—
O K	50.00	—	—
Park Grove	—	56.74	70.23
Ramah	1.57	34.00	28.05
St. Joseph	5.00	—	—
Summertown	5.29	55.10	1.00
West Point	3.50	21.15	—
Association	3.75	47.04	—

McMINN			
Antioch	15.50	11.95	—
Athens, First	14,172.43	1,725.75	1,652.00
Bellfonte	97.92	47.23	—
Bethel Springs	2.13	—	—
Bethsadia	12.00	13.00	—
Calhoun	127.00	7.75	—
Calvary "D"	83.29	11.50	—
Calvary "E"	24.68	25.90	—
Calvary (McMahan)	240.70	51.50	—
Center Point	2.06	—	—
Charleston	110.00	84.65	—
Clear Water	18.00	59.00	—
Coghill	268.88	128.59	6.63
Cottonport	2.66	2.15	—
Council	—	10.00	—
Dixon Avenue	26.00	24.00	—
Double Springs	—	22.00	—
Eastanallee	3.25	86.50	—
East Athens	1,257.12	115.77	—
East Niota	12.00	33.26	—
East View	1.77	10.00	—
Englewood	1,575.44	251.97	57.04
Etowah, First	3,916.00	965.36	487.10
Goodfield	347.42	41.19	—
Good Hope	35.50	—	—
Good Springs	68.00	—	—
Gum Springs	3.31	—	—
Hiwassee	1.30	—	—
Idlewild	21.53	5.00	—
Lakeview	—	7.92	—
Lamontville	3.10	—	—
Mr. Harmony No. 1	—	41.70	—
Mt. Pisgah	1.25	—	—
New Bethel	4.00	—	—
New Friendship	188.96	136.25	—
New Hope	3.00	—	—
New Zion	2.30	14.50	—
Niota, First	619.75	294.89	35.00
North Athens	478.32	111.91	—
North Etowah	61.00	61.05	—
Oak Grove	3.63	11.00	—
Peakland Mission	6.04	—	—
Pond Hill	—	50.00	—
Riceville	73.00	50.85	—
Rocky Mount	1.75	15.00	—
Rogers Creek	40.00	—	—
Sanford	4.47	16.05	—
Shiloh	3.35	50.25	—
Short Creek	1.40	2.00	—
South Liberty	26.08	14.55	—
Union Grove No. 1	3.36	6.00	—
Union Grove No. 2	91.48	62.89	—
Union McMinn	—	17.56	—
Valley View	14.88	12.75	—
Walnut Grove	6.00	—	—
West View	40.00	—	—
Wildwood	85.00	52.63	—
Association	—	5.00	—

McNAIRY			
Adamsville	—	53.05	65.25
Bethel	20.00	23.00	—
Bethel Springs	149.14	34.95	50.00
Butlers	5.06	—	—
Chewalla	129.86	85.00	48.25
Clear Creek	151.75	—	—
Falcon	30.00	—	—
Good Hope	—	17.00	—
Gravel Hill	307.71	110.92	—
Morris Chapel	4.55	—	—
Mt. Gilead	279.84	6.62	—
Mt. Zion	—	6.25	—
Olive Hill	35.00	5.00	—
Pleasant Site	24.41	2.00	20.00
Ramer	50.00	44.35	—
Selmer	1,100.00	261.16	15.45
Tulu	15.00	—	—
West Shiloh	200.00	99.59	—
Association	—	9.50	25.00

MADISON			
Ararat	437.08	61.94	63.07
Beech Bluff	20.50	14.25	—
Beech Grove	24.16	66.28	20.00
Bemis	3,825.00	240.75	739.47
Bethel	23.35	42.70	—
Bible Grove	25.51	—	—
Clover Creek	332.42	185.06	111.50
Cotton Grove	195.00	91.55	25.00
East Laurel	257.29	84.36	—
Enville	—	46.50	—
Friendship	5.00	39.14	—
Henderson	612.33	362.08	79.00
Hill Crest Circle	105.14	10.37	6.44
Jackson, Calvary	4,800.00	1,997.38	376.85
Jackson, First	12,502.31	4,167.05	9,256.93
Jackson, North	1,108.29	91.47	137.73
Jackson, Royal St.	860.33	126.11	73.17
Jackson, West	7,137.50	1,329.47	1,690.43

	Cooperative Program	Designated and Reported	Founda- tion
Liberty Grove	228.42	47.05	—
Madison	200.01	83.20	21.64
Malesus	460.66	107.14	16.03
Maple Springs	371.53	241.74	158.25
Mercer	588.34	171.85	94.60
Mitchells Chapel	10.00	18.16	—
Oakfield	81.91	53.28	—
Parkburg	224.62	48.06	55.00
Parkview	1,739.97	302.11	105.70
Pinson	107.44	33.00	5.00
Pleasant Hill	24.03	—	—
Pleasant Plains	379.03	203.53	121.00
Poplar Corner	109.02	60.04	22.82
Poplar Heights	1,092.37	337.25	93.29
Spring Creek	219.74	102.17	190.00
Wards Grove	221.27	110.82	14.02
Westover	589.59	489.38	106.86
Association	—	64.18	158.09

MAURY			
Blue Buck	82.70	42.00	—
Calvary	—	36.52	—
Centerville	729.74	186.25	52.46
Columbia, First	2,649.77	493.58	947.33
Columbia, Second	209.03	243.12	14.70
Cross Roads	31.27	30.00	25.00
Culleoka	—	—	14.50
Friendship	93.62	76.35	91.92
Hohenwald	209.25	124.28	156.13
Knob Creek	112.28	26.05	75.00
Lawrence Grove	24.07	4.00	10.00
Liberty	—	6.00	19.00
Linden	5.00	66.77	43.60
Mission Chapel	25.00	25.00	—
Mt. Pleasant	847.37	465.61	328.58
Pine Grove	43.40	—	16.66
Rock Springs	55.00	21.65	10.00
Santa Fe	96.00	30.00	145.00
Theta	12.25	19.50	—
Viola	26.20	—	—
Wrigley	50.82	—	10.00
Association	—	48.99	25.00

MIDLAND			
Atkin	195.92	14.20	—
Bells Camp Ground	46.31	86.66	—
Bethany	25.00	25.00	—
Bishopville	54.87	19.75	—
Byrams Fork	—	15.25	—
Calvary	229.88	30.55	—
Cedar Grove	8.00	40.26	—
Clear Springs	53.00	25.00	—
Deep Springs	—	12.00	—
Fairview	153.00	29.19	—
Graveston	194.40	—	—
Laurel Branch	—	50.00	—
New Beverly	—	13.00	—
New Hope	—	150.00	—
Piney Grove	—	5.00	—
Pleasant Hill	252.66	7.61	—
Riverview	60.00	—	—
Texas Valley	—	25.00	—
Union	213.44	16.00	—

MULBERRY GAP			
Beech Grove	_____	3.59	_____
Big Hill	1.00	27.24	_____
Blackwater Union	_____	7.00	_____
Briar Creek	7.00	_____	_____
Carpenters Chapel	15.00	_____	_____
Cedar Flat	3.00	_____	_____
Cedar Springs	_____	2.00	_____
Chinquepin	27.00	_____	_____
Cobbs Chapel	_____	20.90	4.00
Dry Valley	.48	_____	_____
Duck Creek	62.80	41.18	_____
Friendlies Chapel	_____	2.55	_____
Friendship	2.00	5.47	_____
Gap Chapel	6.25	11.00	_____
Huberts Chapel	7.40	_____	_____
Kyles Ford	21.30	14.00	_____
Liberty	39.12	156.48	_____
Mt. Pisgah	1.00	_____	_____
Mulberry Gap	14.05	76.47	_____
New Life	29.60	12.57	_____
Oak Hill	11.25	3.50	_____
Pleasant Hill	39.82	49.10	_____
Pond Hill	_____	13.00	_____
Prospect	8.00	_____	_____
Richardsons Creek	15.70	_____	_____
Rock Bridge	5.51	10.25	_____
Sneedville	108.48	33.50	_____
Spruce Pine	29.47	11.00	_____
Stony Gap	9.87	23.35	_____
Trent Valley	1.50	217.00	_____
Union	2.12	_____	_____
Valley View	18.00	21.00	_____
Wallens Bend	_____	6.00	_____
War Creek	12.17	22.18	_____
Yellow Branch	_____	10.00	_____

	Cooperative Program	Designated and Reported	Founda- tion
NASHVILLE			
Antioch	204.25	129.57	186.93
Ashland City	25.00	29.46	20.00
Bakers Grove	315.86	105.80	88.50
Belmont Heights	31,033.27	5,873.38	11,496.00
Berryville	111.50	12.05	180.25
Bordeaux	82.30	73.94	145.25
Calvary	1,492.24	238.20	412.50
Centennial	27.71	51.22	147.60
Central	61.72	5.34	768.60
Dickson	194.70	133.63	50.00
Donelson	5,258.49	940.21	1,150.19
Eastland	9,641.11	1,147.73	3,179.52
Edgefield	3,642.83	773.72	543.88
Ewing	25.00	10.83	112.50
Fatherland St.	30.00	56.31	376.18
First, Nashville	42,788.95	6,013.64	18,891.37
Franklin	2,577.29	1,003.94	1,616.45
Freeland	340.15	34.50	—
Goodlettsville	2,798.29	111.49	1,545.86
Grace	13,217.67	494.18	2,891.02
Grandview	1,237.11	251.87	1,610.45
Green Hill	170.77	215.44	628.20
Grubbs Memorial	324.58	54.65	—
Harpeth Heights	300.00	183.33	1,325.58
Harsh Chapel	977.38	247.47	496.50
Hendersonville	170.00	147.35	—
Hermitage	146.09	208.38	171.00
Immanuel	5,779.29	2,666.57	3,157.05
Inglewood	6,000.00	703.64	1,300.25
Ivey Chapel	619.80	106.67	10.30
Joelton	312.50	34.40	—
Judson	12,795.01	1,214.28	3,216.45
Lockeland	8,427.48	833.09	3,935.75
Madison	4,977.97	527.00	2,486.50
Mill Creek	214.40	236.87	100.00
New Hope	524.07	155.98	—
North Edgefield	328.32	93.50	66.00
North End	150.00	122.54	305.75
Old Hickory	8,576.42	271.56	1,691.50
Park Avenue	8,239.90	1,098.90	4,285.27
Radnor	890.36	313.68	440.91
Richland	260.50	98.26	360.51
Riverside	666.12	277.47	2.00
Rosedale	25.00	6.32	13.50
Seventh	1,006.16	234.15	568.50
Shelby Ave.	1,788.49	288.00	3,066.70
Temple	843.00	64.79	—
Tennessee Home	1,272.40	363.76	69.10
Third	1,935.67	514.61	1,094.10
Una	652.14	178.72	171.00
Union Hill	1,838.43	56.10	340.00
West Nashville	48.50	35.81	—
White Bluff	12.86	—	—
Woodbine	136.25	168.76	82.55
Woodmont	12,352.55	657.39	5,407.00
Woodmont Center	—	10.00	—
Association	20.80	113.16	5,642.76

NEW DUCK RIVER			
Bell Buckle	168.02	53.07	11.70
Bethany Lane Mission	1.10	—	2.34
Charity	7.76	12.45	—
Cornersville	220.10	167.80	—
El Bethel	178.95	127.93	151.50
Fosterville	—	65.83	29.60
Hannans Gap	180.33	90.94	50.00
Holts Corner	47.80	64.27	57.00
Hurricane	—	39.00	—
Lewisburg	3,916.75	679.73	1,567.40
Longview	—	10.25	—
Mt. Lebanon	26.00	8.55	21.36
New Bethel	154.46	73.63	—
New Hope	63.17	70.00	66.00
North Fork	88.75	50.58	21.83
Rover	196.43	145.61	312.26
Shelbyville	1,975.21	190.42	664.00
Shelbyville Mills	274.40	22.33	—
Short Creek	56.48	80.60	102.75
Smyrna	240.42	59.37	—
Wartrace	311.70	252.00	3.95
Association	—	10.00	—

NEW RIVER			
Black Creek Cross Roads	1.00	—	—
Community	—	10.00	—
Fairview	3.00	—	—
Huntsville	51.69	48.25	—
Lone Mountain	9.00	10.00	—
Low Gap	72.78	45.00	—
Mill Branch	11.30	20.00	—
Mill Creek	—	2.50	—
Mountain View	37.65	6.60	—
Mt. Pleasant	—	4.00	—
New Haven	2.49	16.31	—
New Prospect	.60	—	—
New River	158.00	32.07	—
Norma	—	16.37	—
Oneida	929.60	186.88	21.50
Robbins	223.64	33.03	—
Slick Rock	7.29	10.00	—
Stockton Mission	5.93	—	—
Straight Fork	1.20	—	—
Vine St.	22.91	—	—
West Robbins	.75	—	—

NEW SALEM			
Brush Creek	311.84	240.70	106.50
Buena Vista	25.00	68.25	—
Carthage	686.85	559.83	200.00
Hickman	190.61	145.09	120.00
Lancaster	—	13.04	19.69
Nash Grove	20.00	12.75	—
New Home	134.13	86.65	—

	Cooperative Program	Designated and Reported	Founda- tion
New Middleton	765.52	307.35	388.13
Peytons Creek	58.50	251.93	107.50
Plunketts	—	133.45	—
Riddleton	60.00	56.40	15.50
Rome	65.50	113.66	82.56
South Carthage	10.00	15.50	—
Association	—	46.30	—

NOLICHUCKY			
Alpha	—	5.00	—
Bear Creek	—	8.70	—
Bethel	286.09	99.00	65.00
Beulah	147.84	116.65	6.76
Bibles Chapel	71.79	31.20	11.00
Brier Thicket	31.72	15.15	—
Brown Springs	321.78	321.62	73.97
Bulls Gap	865.08	360.55	50.00
Calvary	527.40	117.00	—
Calvue	28.63	—	—
Catherine Nenney	81.00	45.26	5.00
Cedar Creek	60.43	25.81	8.43
Central	23.79	34.26	—
Concord	215.13	64.11	7.25
Enterprise	—	16.15	—
Fairfield	4.85	—	—
Fairview	433.69	120.65	44.05
Fernwood	11.83	—	—
Grace	165.69	68.97	35.00
Holt	—	15.00	—
Kidwells Ridge	96.62	25.00	—
Leadvale	11.00	31.38	—
Lebanon	142.66	17.18	—
Macedonia	2.90	20.00	—
Montvue	221.39	86.90	21.50
Morristown, First	4,500.00	2,737.84	36.00
Mountain Valley	32.15	—	—
Mt. Zion	125.75	141.93	14.37
Phillippi	10.62	—	—
Pleasant Ridge	—	13.00	—
Pleasant View	25.00	20.66	—
Robertsons	11.64	18.50	—
Rocky Point	89.45	141.92	30.00
Roe Junction	2.59	13.60	—
Russellville	207.23	321.27	7.50
Thankful	2.16	33.00	—
Three Springs	1.46	10.00	—
Warrensburg	393.61	114.67	37.81
Westview	68.11	62.47	—
White Oak Grove	57.38	105.00	17.45
Whitesburg	113.48	313.66	28.72
Witts	383.38	241.32	11.61
Association	—	38.15	42.73

NORTHERN			
Carrs Branch	50.00	59.91	—
Cedar Ford	215.35	147.15	—
Clear Branch	171.00	62.00	—
Hubbs Grove	4.70	—	—
Lone Mountain	50.46	22.98	—
Maynardville	27.00	103.37	—
New Friendship	1.57	—	—
Warwick Chapel	29.01	77.24	—
Association	143.37	150.99	—

OCOEE			
Alton Park	—	25.50	—
Antioch	50.00	—	—
Apison	358.86	61.26	—
Avondale	5,450.93	631.88	—
Bartlebaugh	192.57	13.80	—
Beech Springs	10.00	—	—
Bethel	63.50	15.93	—
Big Springs	1,716.65	237.08	—
Birchwood	448.76	68.72	—
Blue Springs	31.43	15.15	—
Brainerd	9,025.06	873.74	—
Brainerd Hill	565.38	45.25	—
Calvary, Cleveland	131.69	38.08	—
Calvary, Chattanooga	166.45	173.11	100.00
Cameron Hill	10.28	5.00	—
Candies Creek	70.00	66.00	—
Cedar Hill	1,608.01	220.32	—
Cedar Springs	60.00	106.65	—
Central	4,671.40	1,878.77	—
Chamberlain Ave.	3,265.24	230.11	—
Chattanooga, East	3,473.06	521.91	—
Chattanooga, First	15,500.00	15,111.36	1,510.00
Chattanooga, Second	3,792.62	511.70	—
Cleveland, First	11,824.20	375.99	—
Cleveland, North	200.00	243.69	—
Clifton Hills	680.00	194.05	5.00
Concord	2,235.50	178.33	—
Corinth	24.00	21.00	—
Cross Roads	15.00	—	—
Daisy	292.58	—	—
Dallas	6.07	22.05	—
Daytona Heights	45.74	22.16	—
Delashmitt Road	5.00	—	—
Eastdale	2,040.00	615.17	—
East Lake	3,174.43	466.39	—
East Ridge	1,417.32	59.14	—
East Twenty-Sixth St.	247.10	10.00	—
Edgewood	166.00	12.75	—
Fairview	70.00	—	—
Falling Water	58.36	3.19	—
Forrest Wood	—	30.00	—
Galilee Mission	4.60	—	—
Georgetown	10.00	28.41	—
Goodwill	—	21.44	—
Greenwood	58.45	—	—
Guild	33.00	10.00	—
Highland Park	3,900.00	3,592.44	—
High Point	20.00	7.78	—
Hixson	1,258.20	76.26	—
Hughes Avenue	62.79	79.00	—

	Cooperative Program	Designated and Reported	Founda- tion
Kings Point	21.55	15.29	—
Kingwood	75.00	101.00	—
Lebanon	15.00	26.75	—
Little Hopewell	5.40	—	—
Lookout Mountain	1,970.91	500.72	—
Lookout Valley	8.00	103.25	—
Lupton City	58.00	125.00	—
McCarty	23.80	—	—
Macedonia	—	131.90	—
Maple Grove	8.38	60.00	—
Michigan Avenue	—	56.00	—
Middle Valley	135.93	126.55	—
Morris Hill	520.00	50.36	—
Mountain Creek	238.73	—	—
Mountain View	16.28	—	—
Mt. Carmel	—	60.00	—
New Bethel	5.60	25.00	—
New Liberty	29.12	10.00	—
New Mt. Carmel	15.00	—	—
New Union	5.61	5.00	—
Northside	5,845.98	618.72	—
Oak Grove	2,258.95	287.01	—
Oakwood	357.57	436.60	—
Olive St.	10.00	—	—
Ooltewah	940.00	207.75	5.00
Parkers Gap	43.28	86.01	—
Philadelphia	5.00	95.70	—
Phillippi	35.47	26.25	15.00
Pilgrims Rest	5.54	5.94	—
Pine Ridge	—	40.00	—
Pleasant Grove	—	25.61	—
Pleasant Hill	15.73	16.00	—
Providence	125.00	27.00	—
Red Bank	7,661.07	417.99	5.00
Ridgedale	12,880.27	2,047.12	4.00
Ridgeview	1,313.00	143.19	—
Rutledge	50.00	41.00	—
Shady Grove	10.00	—	—
Shepherd	62.00	78.64	—
Shepherd Hill	5.42	—	—
Signal Mountain	256.95	114.30	—
Silverdale	403.91	96.39	—
Soddy, Oak St.	445.52	131.73	—
South Daisy	378.21	41.24	—
South Soddy	—	13.50	—
South St. Elmo	—	15.00	—
Spring Creek	1,469.57	108.34	4.00
St. Elmo	6,708.95	508.68	2.00
Suck Creek	5.00	—	—
Temple	—	39.20	—
Thompsons	—	6.00	—
Tyner	127.51	65.83	—
Union Fork	—	10.00	—
Victory	55.41	—	—
White Oak (Chattanooga)	2,778.55	228.50	—
White Oak (Cleveland)	—	3.59	—
Whitesides	5.00	—	—
Woodland Hgts.	175.00	239.88	—
Woodland Park	6,278.58	880.39	10.81
Association	—	1,870.79	750.00

POLK			
Antioch	1.64		
Archville	10.00		
Beech Springs	1.66	10.00	
Benton, First	37.81	92.70	
Benton Station	52.68	48.00	
Bethlehem	13.51		
Blue Ridge	21.32	29.75	
Boanerges	.42	16.00	
Chestua		10.35	
Coletown	8.22		
Conasauga River	1.86		
Cooksons Creek	5.50	24.54	
Delano	20.00	30.35	
Fairview		10.00	
Friendship	10.00		
Grassy Creek	2.76		
Greasy Creek	12.91	10.00	
Hiwassee Union	17.60	18.71	
Isabella	22.50	26.00	
Mine City	716.33	273.81	10.00
Mt. Harmony	3.31	13.00	
Mt. Vernon		10.00	
Mt. View	1.94	10.25	
Mt. Zion	135.00	158.09	
New Zion	1.34		
Oak Grove	5.50		
Old Ocoee	69.65	52.00	
Pine Ridge Mission	.70		
Pleasant Grove	14.45	12.00	
Shiloh	48.00	64.70	
Smyrna		26.00	
Springtown	1.15		
Turtletown	1.15		
Welcome Valley	1.70		
Wetmore	30.00	21.85	5.00
Zion	41.30	36.95	5.00
Zion Hill	70.00	46.90	
Association	1.25		

	Cooperative Program	Designated and Reported	Founda- tion
PROVIDENCE			
Antioch	10.00		
Baptist Tabernacle	406.25	63.77	35.00
Beals		50.00	
Bell Avenue		9.04	
Cave Creek	29.65	2.50	
Cedar Grove	16.94	59.51	
Dogwood Chapel	3.85		
Highland Park	5.35	75.00	
Jones Chapel		93.24	
Lenoir City, First	9,072.43	341.84	147.60
Lenoir City, Second		70.32	
Mars Hill	2.94		
Midway	544.81	98.42	20.00
Morganton	2.82		
Mt. Pleasant	7.00	38.00	
New Midway		14.18	
New Providence	25.00	66.00	
Old Ballards	91.97	49.27	20.00
Oral	69.35	93.15	
Paw Paw Plains		31.37	
Pine Grove		36.00	
Pleasant Hill	614.93	119.64	
Shady Grove		30.23	
Silver Ridge	2.66	2.27	
South Holston	12.00	15.50	
Stony Point	11.13	2.55	
Union Chapel		33.40	
Union Stockton Valley	82.43	20.00	
West Broadway	24.82	53.49	
Zion Chapel	11.45	50.22	
Association		26.50	

RIVERSIDE			
Allardt	64.90	31.44	
Allons	44.62	11.00	
Baptist Ridge	3.00		
Byrdstown	40.00		
Calvary	10.50		
Celina	162.41	23.78	
Clarkrange	69.00	30.00	
Clear Creek	1.51	2.40	
Cliff Springs	1.00		
Columbia Hill	40.00	10.00	
Davidson Mission	1.92		
Euter	39.78	34.68	
Fairview	1.03		
Falling Springs	7.42		
Fellowship	2.86	41.00	
Fredonia	21.77	69.72	
Friends Chapel	5.00		
Indian Grove	2.00		
Isolene	19.00		
Jamestown	356.16	56.83	11.00
Livingston	20.00	35.00	
Lovejoy	3.00		
Manson	16.50		
Mayland	7.68		
Moodyville	46.33	35.13	
Mountain View	3.76		
Mt. Union	10.14	21.10	
Muddy Pond	1.00		
Plateau	31.72	5.00	
Riverton	2.86	4.00	
Three Forks	11.69		
Vine Ridge	3.00		
Wilder Mission	3.47		
Zion Hill	2.75	30.00	
Association	1.50	13.87	

ROBERTSON			
Barren Plains	1,136.84	312.27	813.95
Battle Creek	5.13		73.00
Bethel	229.78	88.66	5.00
Bethlehem	176.43	82.90	91.75
Cedar Hill	378.66	72.25	
Center Point	26.94	12.32	
Concord	12.00	21.00	
Eastland Hgts. Mission	48.71	15.32	
Ebenezer	58.85	40.66	252.79
Flewellyn	71.75	36.12	91.00
Grace	440.69	147.72	293.17
Greenbrier	1,380.28	128.68	247.93
Hopewell	1,349.81	467.52	775.25
Mt. Carmel	1,464.35	130.99	
North Springfield	489.82	43.96	8.45
Oak Grove	1,023.92	261.15	15.00
Oakland	122.56	6.80	
Orinda	3,333.20	643.10	
Pleasant Hill	600.00	106.21	46.71
Pleasant Valley	23.21	4.20	
Red River	255.50	280.76	116.00
Rock Springs	39.44	93.06	58.53
Springfield, First	7,374.52	845.64	2,605.89
White House	179.18	126.69	
Williams Chapel	102.20	145.01	136.93
Association		25.00	103.00

SALEM			
Auburn	842.05	166.94	
Barren Fork	5.00	17.50	20.50
Burt	82.43	50.00	
Cave Springs	31.18	10.00	33.33
Center Hill	22.00	7.85	
Coopers	88.00	35.00	
Dowelltown	95.95	5.60	
Dry Creek	68.18	51.00	57.00
Gath	108.77	31.74	35.00
Indian Creek Memorial	8.43		8.50
Madison St.	376.65	20.29	6.00
Malone	5.87	5.00	3.18
Mt. Herman	92.00	5.00	25.00
Mt. Zion	353.80	8.00	82.67
New Home	6.60		9.00
New Hope	45.00	50.00	42.00
Pleasant View	12.34	10.65	
Providence	10.55		

	Cooperative Program	Designated and Reported	Founda- tion
Salem	438.70	326.07	174.50
Shiloh	7.67		
Smithville	390.22	163.32	188.23
Snow Hill	35.50	18.00	
Sycamore		92.18	44.00
Whartons Springs	45.00	51.07	23.50
Wolf Creek	28.77	12.00	17.13
Woodbury	279.10	448.15	370.45
Association		39.42	

SEQUATCHIE VALLEY			
Cold Springs	20.00		
Daus	5.54		
Dunlap	496.15	125.42	
Ebenezer	72.45	46.84	
Ewtonville	153.85	34.25	
Flat Mountain	6.00		
Griffiths Creek	37.28	8.00	
Jasper	11.00	130.29	
Kimball Mission	136.04	18.65	
Lee Station	32.85	9.00	
Mineral Springs	2.69		
Mountain View	24.01		
Pikeville	69.05	32.74	
Richard City	510.01	119.10	15.00
Sequatchie	70.60	8.90	
South Pittsburg	2,864.61	534.64	61.00
Whitwell	240.24	49.47	
Association		20.00	

SEVIER			
Alder Branch	360.00	161.55	
Antioch	152.22	3.00	
Banner	14.62	62.24	
Beech Springs	527.45	110.08	
Bethel	50.12	64.00	
Boyd's Creek	429.23	72.05	
Chestnut Hill Mission		4.25	
Cove Mont	3.00		
Dupont	57.50	55.80	
French Broad Valley		19.00	150.00
Friendship		7.50	
Gatlinburg	325.26	216.30	
Gists Creek	63.91	48.00	
Hendersons		11.95	
Hills Creek		31.50	
Howards View	1.10		
Jones Chapel	17.00	45.00	
Knob Creek	60.00		
Laurel Grove	24.22	3.00	
Millican	55.04	73.63	
Mountain View	31.60		
Mt. Zion	2.76	11.60	
New Era	5.00	14.87	
New Salem	2.34	13.00	
Oak City	5.00		
Oldhams		5.00	
Paw Paw Hollow		359.00	
Pigeon Forge	115.00	81.75	7.00
Providence	9.18		
Red Bank	28.62	25.00	
Richards Cove	15.01	5.05	
Roaring Fork		67.30	
Rocky Grove	.50		
Sevierville	3,070.13	701.32	612.00
Sims Chapel	15.00		
Sugar Loaf	7.00	15.42	
Valley View	21.73	10.00	
Waldens Creek	14.63		
Walnut Grove	2.25		
Wears Valley	63.63	70.00	
Zion Grove	6.11	10.73	
Zion Hill	128.15	57.53	

SHELBY			
Ardmore	1,531.35	387.07	23.84
Arlington	157.50	25.91	72.00
Bartlett	880.95	97.82	78.00
Barton Heights Mission	30.67	7.50	
Bellevue	68,218.41	10,374.88	6,399.90
Berclair	2,739.00	148.52	333.04
Beverly Hills Mission	25.90		12.00
Big Creek	39.00	26.00	9.00
Boulevard	12,933.87	578.82	2,016.24
Breedlove	160.00		
Brunswick	200.00	53.63	102.00
Buntyn	428.61	86.80	30.00
Calvary	4,446.40	541.16	823.30
Capleville	413.59	51.05	113.25
Central Avenue	6,646.80	399.30	64.38
Collierville	2,107.49	833.47	176.05
Cordova	1,286.13	469.53	450.61
Eads		103.28	
Egypt	181.21	95.72	76.80
Elliston Avenue	279.75	46.36	20.00
Eudora	96.50	358.53	100.81
First, Memphis	35,355.83	7,594.20	1,641.23
Fisherville	89.68	265.72	75.93
Flynn Avenue	15.00	6.80	
Forest Hill	325.62	51.92	41.00
German town	199.31	61.10	15.25
Highland Heights	9,612.73	1,840.48	2,298.76
Hollywood	1,298.42	215.10	5.00
Kennedy Memorial	753.18	179.47	31.25
La Belle	10,319.97	413.19	1,539.19
Lamar Heights	2,062.51	282.41	512.30
Leawood	1,393.84	79.77	52.19
Levi	601.96	125.12	325.81
Longview Heights	1,038.69	79.76	24.27
Louisiana St.	982.30	77.67	20.45
Lucy	91.00	25.85	5.00
McLean Blvd.	3,929.85	1,830.50	1,150.00
McLean Chapel		22.00	
Malcomb Avenue	2,676.26	88.89	61.12
Mallory Heights	2,470.00	110.77	11.11
Merton Avenue	3,912.00	441.27	649.30

	Cooperative Program	Designated and Reported	Founda- tion
Millington	488.54	85.50	276.00
Mt. Pisgah	227.14	49.73	
National Avenue	280.00	27.90	
Oak Lawn	299.55	32.60	4.00
Oakville Memorial	813.46	206.85	295.88
Park Avenue Mission	685.59	74.06	
Parkway	2,068.62	190.23	23.00
Poplar Avenue	460.00	153.68	7.10
Prescott Memorial	8,888.87	668.36	1,683.21
Raleigh	693.09	57.79	130.00
Riverside	820.90	55.68	4.00
Seventh Street	4,051.25	329.77	107.25
Shirley Park Chapel	41.15	56.23	15.00
Southland	377.14	20.16	25.00
Speedway Chapel	416.04	52.05	
Speedway Terrace	4,500.00	2,050.76	1,681.00
Sylvan Heights	303.88	68.47	18.32
Tabernacle	217.67		
Temple	31,041.75	1,468.01	3,789.75
Trinity	900.00	604.83	60.00
Union Avenue	23,291.73	1,992.99	910.74
Wells Station Mission	40.83	4.15	
Whitehaven	330.00	289.06	151.04
Whitten Memorial	408.40	65.77	
Woodstock	30.00	21.38	7.14
Association		235.41	36.00

SOUTHWESTERN DISTRICT			
Chalk Hill	135.60		
Eagle Creek	15.87		
Flatwoods	35.00	44.95	
Unity	55.95		

STEWART			
Big Rock	233.65	84.50	454.00
Corinth	18.80		20.00
Crocketts Creek	1.25		35.15
Dover	660.53	280.30	808.00
Elk Creek	2.00		
Fairview	2.15		
Model	383.86	103.57	144.66
Mt. Sinai	5.00		
Nevils Creek	134.00	20.90	141.65
Oak Grove	37.50		
Pleasant Grove	4.72		
Stewart		36.98	
Tip Top	12.00	20.00	16.00
Walnut Grove	40.00	20.00	
Association		26.92	9.50

STOCKTON VALLEY			
Cedar Grove	1.13	5.00	
Fairview	.47		
Hinds Chapel	1.56		
New Hope	1.44		
Oak Grove	1.98		
Pleasant View	.67		
Seventy-Six	20.18		

STONE			
Algood Mission	20.16	11.95	
Bear Cove	17.43	36.73	34.00
Brotherton	7.00	7.20	
Cane Creek	2.00	29.25	
Caney Fork	24.20	28.75	
Cedar Hill	7.85	36.22	
Cookeville	2,058.71	857.88	
Dillard Creek	4.66	5.75	13.50
Dodsons	1.25	11.35	
Fourth St. Mission	26.00	64.37	.50
Free Union	1.44		
Gainesboro	5.00	71.94	49.05
Hampton Cross Roads		15.00	
Hanging Limb	18.72		
Jarid Mission	5.00		
Johnsons	.80		
Macedonia	5.50	8.00	
Mill Creek	8.71	29.50	
Monterey	639.25	223.56	80.

	Cooperative Program	Designated and Reported	Founda- tion
SWEETWATER			
Antioch	8.00	6.50	
Beatys Chapel	13.00		
Bethlehem	8.00		
Blairland	77.75	34.71	
Calvary	8.00		
Cane Creek	9.64		
Chestua	398.53	68.00	
Chilhowee	5.64		
Christianburg	156.93	95.50	
Citico		5.00	
Coker Creek		1.50	
Compromise	6.00		
Corinth	15.00	88.60	
East Sweetwater		21.95	
Fairview	21.50	66.00	
Friendship		30.00	
Glenlock	8.04	9.41	
Holly Springs	10.00	20.00	
Hopewell	3.73		
Island Creek	4.43	5.84	
Loudon	703.99	156.23	65.00
Lower Chilhowee	1.10		
Macedonia	6.70		
Madisonville	1,039.64	314.44	107.19
Mt. Harmony	2.38	22.28	
Mt. Isabel	4.40		
Mt. Pleasant	1.00		
Murrays	6.70	9.05	
New Bethany	2.00	9.00	
New Macedonia		20.00	
New Providence	2.00		
North Sweetwater	30.00	1.50	
Notchy Creek	63.55	24.00	
Oak Grove	32.00	25.00	
Oakland	69.74		
Old Sweetwater	10.00		
Philadelphia	288.50	514.37	23.00
Piney Grove	3.55		
Poplar Bluff	6.00	11.50	
Prospect	181.10	184.71	
Reed Springs	2.68	33.50	
Rocky Springs	24.00	15.00	
Shady Grove	2.47	2.75	
Sheltons Grove	3.00		
Shoal Creek		5.00	
Sweetwater	2,250.00	999.02	20.00
Tellico Plains	20.15	97.34	
Tevis Springs	2.00		
Towee Falls	10.00	5.00	
Unicoi	1.35		
Union Fork Creek	1.00	6.25	
Union Grove	4.17	3.57	
Vonore	125.58	47.00	
Watsons		19.00	
Association	5.36	47.39	25.00

TENNESSEE VALLEY			
Bethel	82.92	65.64	
Bogles Chapel	8.22		
Clear Creek	94.32	40.30	
Concord		9.00	
Coulterville		16.00	
Dayton	1,221.00	335.27	25.00
Garrison	20.00	35.00	
Grandview	25.00	114.30	
Graysville	18.00	17.00	
Hickory Grove Mission	0.65		
High Point	2.26		
Lake Drive	58.00		
Mt. Vernon	147.33	81.13	
New Union	254.38	164.67	
Ogden	34.75	46.47	
Pennine		17.27	
Sale Creek		30.25	
Salem	99.36	70.50	
Smyrna	183.89	70.36	5.00
Spring City	560.26	225.37	
St. Clair	4.15	67.00	
Tennessee Valley	545.81	122.80	6.75
Texas Grove	3.34		
Waldens Ridge	100.56	89.39	
Washington	21.08	40.65	
Wolf Creek	117.89		
Yellow Creek	64.87	40.81	6.20
Association		24.69	50.00

UNION			
Bolling Springs	17.00	6.50	
Campaign	52.66		10.00
Doyle	61.36	26.07	11.32
Greenwood	3.15		9.35
Gum Springs	3.39		25.58
Hickory Valley	32.50		
Mt. Elim		14.00	22.00
Mt. Pleasant	1.39		3.00
Pike Hill Mission	6.83		
Pistoles	41.66	22.16	
Pleasant Hill	99.00	37.12	32.61
Quebeck	33.19		
Rock Island Mission	20		
Shellsford	97.90	106.86	28.21
Sparta	881.00	117.18	32.38
Spencer	125.00	26.81	25.00
Twin Oaks Mission	.90		

WATAUGA			
Antioch	4.06		
Bakers Gap	1.93	48.68	
Beck Mountain		36.00	
Bethany	49.50	42.82	
Bethel	9.63	16.00	
Big Spring	162.87	188.76	
Biltmore	40.00	19.10	

	Cooperative Program	Designated and Reported	Founda- tion
Butler	164.34	22.25	
Caldwell Springs	23.14	44.18	
Calvary	524.83	104.27	
Cobbs Creek	9.00	47.73	
Corinth	1.29	9.25	
Doe River	791.51	64.45	
Doe Valley	17.70	38.08	
Dysons Grove	1.71	8.29	
Eastside	400.00	32.81	
Elizabethton	11,983.37	1,373.97	184.21
Elk River	24.00	1.50	
Evergreen		155.91	
Fairview	414.53	53.21	
Fish Springs		32.85	
Grace	1,070.98	245.85	10.00
Hampton	435.64	80.10	
Happy Valley Mission	31.64		
Harmony	5.30	40.08	
High Point		25.00	
Hunter	15.61	4.00	
Immanuel	1,131.60	123.56	
Little Doe	159.93	72.10	
Little Milligan		60.00	
Lynn Valley	9.61		
Meadow View		7.00	
Mountain City	783.60	133.46	
Mountain View		23.00	
Nelsons Chapel	3.86	5.40	
Oak St.	250.18	77.35	
Pierce		10.00	
Pine Grove		16.75	
Pine Mountain	1.58	3.45	
Pleasant Grove		278.96	410.25
Poplar Grove		10.00	
Powder Branch	4.63		
Rainbow	9.69		
Rittertown	6.12	5.00	
Roan Creek	6.00	36.37	
Roan Mountain	74.00	75.10	
Shady Valley		10.72	
Siam	2,631.01	115.52	30.00
Sinking Creek	34.55	224.16	
Sink Valley		9.50	
State Line	1.25	20.00	
Stoney Creek	332.80	75.00	
Union	143.19	10.00	
Willow Springs	3.34		
Zion	2.55	50.00	
Association		12.43	130.35

WEAKLEY			
Adams Chapel	94.00	86.03	47.85
Beech Springs	61.93	34.69	30.00
Bethel	275.00	122.00	90.00
Bethlehem	40.00	38.69	
Bible Union	44.04	80.00	15.00
Calvary	60.00		
Central	511.30	230.73	271.00
Corinth	10.00		5.00
Dresden	2,039.02	267.34	463.92
Gearins Chapel	50.00	17.15	25.00
Gleason	196.29	101.83	24.00
Greenfield	408.67	105.95	132.83
Jolley Springs	220.21	130.25	9.30
Macks Grove	79.09	6.25	
Moore's Chapel	9.67		
New Hope	100.30	26.00	25.00
New Prospect	8.25		
New Salem	118.47	13.30	
Northwestern	40.75	1.80	
Oak Grove	110.12	72.42	11.40
Old Bethel		45.83	
Palmersville	329.93	89.97	93.00
Pleasant View	16.65		
Public Wells	118.90	35.00	30.00
Ralston	106.50	58.50	30.00
Republican Grove		20.00	
Ruthville	63.00	80.37	
Sand Hill	50.00		
Thompson Creek	303.41	100.74	65.65
Tumbling Creek	10.40		
Union Grove	10.00		
West Union	20.00	30.00	30.00
Association		15.45	25.00

WESTERN DISTRICT			
Bethlehem	425.00	16.25	
Big Sandy	18.14	21.00	
Birds Creek	15.00	34.00	
Cottage Grove	165.78	70.00	
Fairview Com. Mission	3.56		
Friendship	8.07		
Henry	87.92	58.70	
High Hill	295.62	327.88	5.00
Jones Chapel	108.46	84.60	25.00
McDavids	2.64	31.30	
Mansfield	20.25	14.75	
Maplewood	247.20	111.96	15.00
Mt. Sinai	29.21	10.80	4.55
New Bethel	4.50		
New Boston	6.28	61.67	
New Hope	122.93	26.40	
North Fork	127.59	23.75	
Oak Hill	39.60	27.92	
Old Union	10.00	6.00	
Paris, First	10,129.40	2,432.28	611.60
Point Pleasant	23.74	129.50	
Ramble Creek	6.50		
Shady Grove	18.25		
Spring Creek	27.30		
Spring Hill	13.15	48.50	
Springville	22.26	8.00	
Union Friendship	82.00	188.00	75.00
West Paris	390.63	172.65	37.00
Association		18.00	30.00

	Cooperative Program	Designated and Reported	Founda- tion
WEST UNION			
Bethlehem	121.22	1.36	71.15
Black Creek	.95		
East Apple Tree		13.46	
Elk Fork	40.11	38.50	
Helenwood	29.60	16.00	
Hickory Grove		12.53	
High Point	1.86	26.04	
Huntsville, Second	1.89		
New Light		7.20	
Oak Grove		20.00	
Opposum Rock	.89	30.00	
Pentecost	5.87		
Pine Grove		25.29	
United	10.52		
West Oneida	4.00		
White Pine	.95		

WILLIAM CAREY			
Ardmore	484.51	206.15	20.00
Cash Point	451.17	139.51	53.60
Concord	47.50	34.60	125.00
Donaldsons Grove	30.85	5.95	
Elkton	50.15	26.73	7.50
Elora	27.46	30.50	
Fayetteville	1,792.18	591.48	193.14
Flintville	75.18	48.25	
Hickory Grove		6.00	
Kelleys Creek	76.31	97.55	35.00
Kirklands	90.21	15.61	
Lexie	35.00	2.60	5.00
Macedonia	68.51	13.34	
Mulberry	103.53	36.75	
New Grove	30.00	180.98	115.00
New Hope	18.75		31.02
Oak Grove	4.00		
Oak Hill	90.25	18.50	15.00
Petersburg	793.29	123.22	30.50
Pleasant Grove		3.00	
Pleasant Ridge	20.75	10.00	
Prospect	29.13	36.82	50.00
Stewart Chapel	1.00	5.75	
Association		10.00	

WILSON			
Alexandria	1,239.34	190.80	600.00
Bartons Creek	315.82	49.80	333.49
Cedar Creek		74.30	57.55
Cedar Grove	79.02	160.43	
Chandler	35.50	43.85	25.00
Fairview	540.97	57.91	
Fall Creek	137.07	179.47	75.78
Gladeville	382.13	146.00	73.06
Greenville	67.53	56.34	
Hurricane	175.86	52.57	
La Guardo	18.00	79.27	50.00
Lebanon	4,527.15	553.11	134.60
Linwood	20.71	16.72	15.86
Little Cedar Lick	85.10	317.00	
Mt. Juliet	1,079.03	155.16	43.30
Mt. Olivet	23.45	42.59	
Prosperity	1,076.57	86.25	233.00
Ramah	191.82	5.43	5.72
Rocky Valley	21.00	60.20	
Round Lick	329.95	232.69	149.27
Rutland	18.50	35.00	21.00
Saulsbury	70.74	30.00	
Shop Springs	1,099.77	391.44	201.85
Smithfork	179.46	110.38	50.00
Watertown	1,273.87	123.76	
West End Mission	27.37	10.18	
Association		31.00	25.00

WISEMAN			
Lafayette	69.95	159.17	
Spring Creek			10.00

MISCELLANEOUS			
Berea		3.32	
Calvary		8.14	
Dale Ridge	4.64		
Freedom	13.00		
Mt. Zion	1.00	.50	
Providence		1.08	
Tabernacle	.50		
Tarklin Valley	16.00		
Temple	72.00	39.00	
Trinity	3.15		

CURLEY PRINTING CO.

Home of

THE BAPTIST PRESS

412 Demonbreum St.

Phone 4-5201

NASHVILLE, TENN.