

Baptist and Reflector

"SPEAKING THE TRUTH IN LOVE" ★ ★ ★ JOURNAL TENNESSEE BAPTIST CONVENTION

VOLUME 117

THURSDAY, SEPTEMBER 13, 1951

NUMBER 37

LEBANON TENN

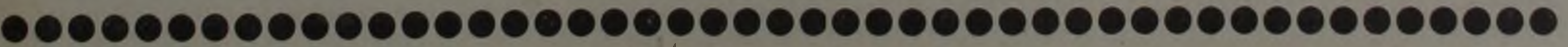
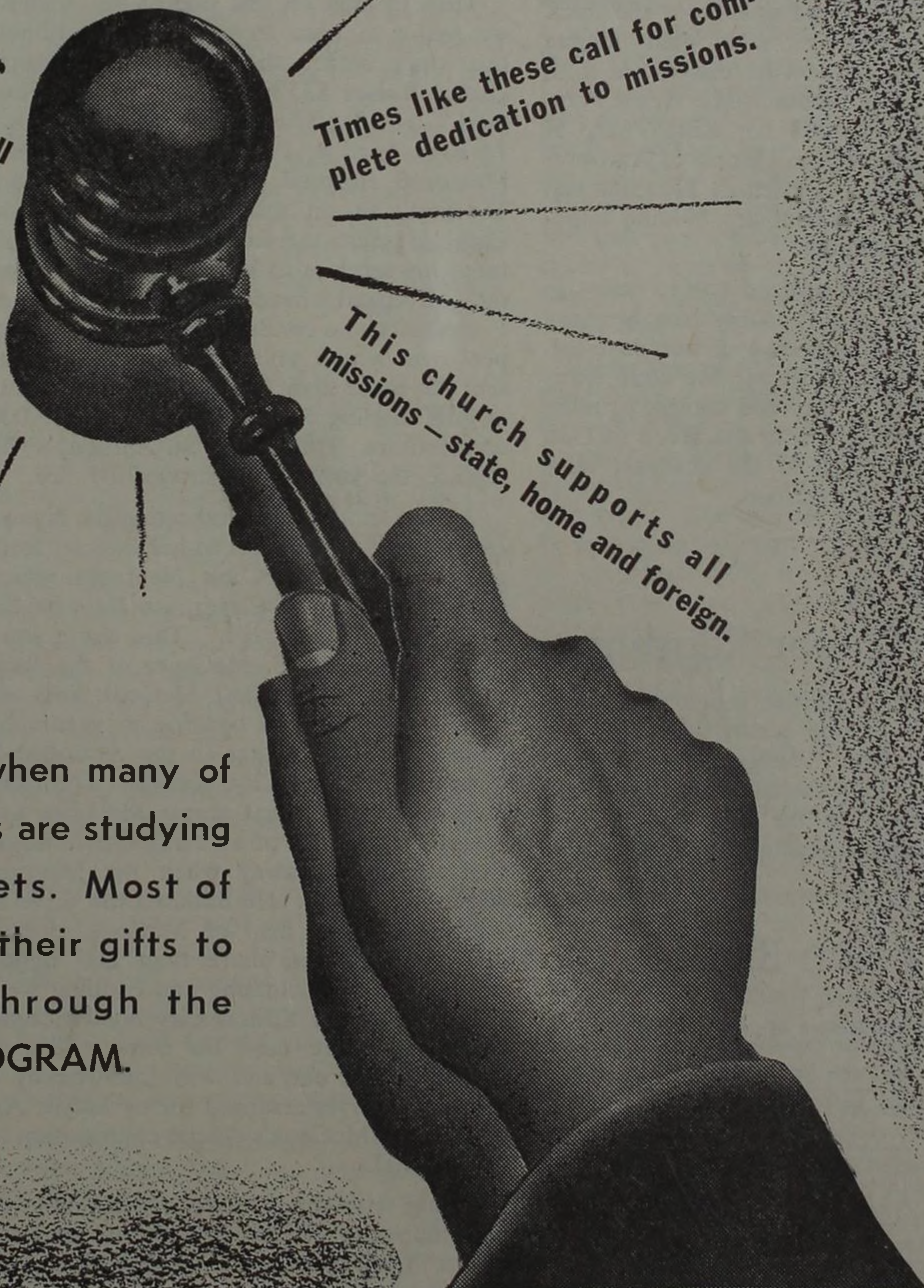
The motion passes: We shall give more to missions.

Times like these call for complete dedication to missions.

Let the gentlemen speak for the Cooperative Program.

This church supports all missions — state, home and foreign.

This is the season when many of our 27,788 churches are studying their annual budgets. Most of them will increase their gifts to world missions through the COOPERATIVE PROGRAM.



Unrecognized Treasure

This is prompted by a news item from Brussels about a Malines businessman, Emil Devis, who suddenly found himself possessor of a very valuable treasure which had been in his keeping for 15 years without his awareness of its worth.

In 1936 he bought at auction in Antwerp in a collection of books a rare Bible, "never suspecting the treasure he had acquired." "I bought up the whole collection because I wanted to start a library," Mr. Devis said, "but when I got home my wife was annoyed at the money I had spent, and so we decided to put the whole moldy lot in the attic." On reading an article in a Flemish weekly describing the newly opened Plantin Museum in Antwerp and the collection of the *Biblia Regia Polyglotta* there, Mr. Devis recalled he had some sort of Bible up in his attic. Brushing off the dust from the thick leather-bound volume with gold filigree along the page borders he discovered it to be a copy of the famous *Biblia Regia Polyglotta*, printed in 1571 for King Philip II of Spain by Christopher Plantin of Antwerp. Now the Vatican, the British Museum and the Belgium government are bidding handsomely for the volume.

A treasure unrecognized for 15 years in his possession! How possibly true in many other cases of Bibles owned, but dust collecting! The true treasure in the Bible, however, lies not in its rare and ancient printing and costly binding, but in the Word of God it brings to us even in the cheapest issue which we may all purchase.

The News Makes Queer Reading

At least some of the religious news is odd. We have come across these items to mention but a few. "Hungary To Distribute Communist 'Bible' is the Religious News Service headline on the following: "Hungarian Communist authorities are preparing

BAPTIST AND REFLECTOR

149 Sixth Avenue, North • Nashville

Official Publication of the Tennessee Baptist Convention

CHARLES W. POPE, Executive Secretary

RICHARD N. OWEN.....Editor
FRED W. NOE.....Business Manager

Entered at Postoffice, Nashville, Tenn., as second-class matter as a weekly except Christmas week, under the act of March 3, 1879.

Terms of Subscriptions—Single subscriptions payable in advance, \$2 per year. Church budget rate \$1.20. Advertising Rates upon request.

TENNESSEE BAPTIST PRESS, Inc., Nashville, Tenn.
DIRECTORS: EDWIN E. DEUSNER, President; W. C. KIRK, Vice President; J. R. KYZAR, Secretary; WALLACE CARRIER, DAVID N. LIVINGSTONE, T. C. MEADOR, D. P. MCFARLAND, E. L. SMOTHERS, AND DILLARD WEST.

to distribute a 'Communist version of the Bible' a Vatican Radio broadcast reported. The broadcast said, 'millions of copies' of the Communist 'Bible' have been printed in many languages for distribution not only in Hungary but throughout the world."

Then we have alongside that the following with a Paris dateline headlined, "Priest Is Star Of Acrobatic Troupe" followed by the account of a Roman Catholic priest who performs every Sunday in Dijon as the star of an acrobatic group. He is Abbe Simon from Saone who is known as the "flying man" because he jumps from a height of 100 feet. Abbe Simon said that he undertook his weekly acrobatic stint to raise money for the restoration of "his run-down parish church." Abbe Simon added that jumping from his high perch at Dijon gave him "less stage fright than preaching a sermon."

Then to look on this side of the Atlantic we pause to note from Effingham Illinois this story under the caption "Protestant Group Raises \$550,000 for Catholic Hospital." The day after the tragedy which took 75 lives April 4, 1949 when St. Anthony's Memorial Hospital was burned J. William Everhart, an oil man, went to the local Catholic priest, the Rev. John Goff, and offered his services to help rebuild the hospital. Everhart headed a committee of Protestants who conducted a nation-wide appeal over a two year period in which they sent out more than 100,000 letters, resulting in gifts totaling \$550,000 from over 35,000 contributors. Thus a new St. Anthony's will replace the structure destroyed by fire.

And as another item indicating the bigness of the heart that desires to help we set forth a release from McCook Nebraska which bore the headline, "Clergyman Delivers Six Tons of Relief Supplies." This was a story about pastor W. E. McGuire of the local Baptist church who left McCook with six tons of clothing and bedding to personally deliver to flood victims in the Armourdale district of Kansas City, Kansas. The story goes on to relate that pastor McGuire was himself the owner of an Armourdale house that was swept away when the Missouri River overflowed. He initiated the drive in which, with the help of McCook citizens and organizations, more than 200 tightly packed boxes of clothing and bedding were collected for the Kansas City flood victims. Pastor McGuire used his own trailer attached to his car and was followed by a truck and driver arranged for by Mayor Art Johnson as McCook's official contribution to flood relief.

Along with the others we make note of the following "Runs On The Commandments" from New York, "Bishop Homer A. Tomlinson, general overseer of the Church of God, has announced that the platform on which he will run for President of the United States will be the Ten Commandments, plus two other 'commandments.' At his Queens Village home, where he is under-

Reflections



To know how little we know is the first step to knowing more.

A man who wants to lead the orchestra must turn his back on the crowd.—Jas. Crook

It is with words as with sunbeams—the more they are condensed, the deeper they burn.—Robert Southey

OPPORTUNITY is:

- ... what the strong man makes for himself.
- ... what the industrious man asks for.
- ... what the lazy man dreams about.
- ... what the weak man waits for.
- ... what the wise man sees and makes the most of.

Optimist

The Power House

Out for my evening stroll
I discovered on 84th Street
A power-house, quietly humming to itself,
And though I lived near-by
I had never known it was there.
Some people are like that.
Christopher Morley, *Mandarin in Manhattan* (Lippincott)

Love

Love has a hem on its garment
That reaches the very dust.
It can reach the stains
In the streets and lanes,
And because it can, it must;
It cannot stop on the mountain
It is bound to go to the vale,
For it cannot find its fullness of mind
Till it reaches the lives that fail.

Quote

going a 21-day fast preparatory to beginning an electoral speaking tour, Bishop Tomlinson said his additional commandments are: 'This is My Beloved Son, hear ye him,' and 'Love one another.'"

"From Now On . . ."

On August 23, 1951, the morning papers announced that the peace talks which had been taking place at Kaesong had been called off by the Russians. In their usual manner the newspaper men looked for a phrase in the Russian declaration which would be eye-catching and at the same time present in the pithy statement the general spirit of the note. In the phrase, "from now on," they found that for which they were searching. By the process of repetition the journalists caused the American people to see that in this phrase the Russian attitude unveiled itself. With "from now on" a curtain of finality, a sense of thoroughness was drawn. The expression said that "from now on" a new era had begun. The Russian statement did not tell what their conduct would be "from now on." However, they gave no evidence that they would take a conciliatory attitude. All that they said was that an end had been reached and that the present conduct proceeds from the "from now on."

This phrase transformed by Christian love renders itself an appropriate utterance for the Christian people in an hour of finality. Christian "from now on's" would indicate that the Christian has reached the hour of fuller dedication—"From now on God is going to be more a part of his life than He has in the past." However, this utopian statement broken down into various "from now on's" would present a better working basis for bringing about its accomplishment.

Each Christian might well say, "From now on I shall be keenly aware of sin and its consequences in my life." This is certainly a basic need for each Christian today. He needs to see the threat to himself as not from without but from within. Every Christian needs to apply to his life the experience of the battleship Missouri. The Missouri came back from the war a gallant example of the supremacy of the U. S. Navy. During the war laurels were heaped upon her. The enemy left her unscratched. As she entered an American port, all America turned toward her with proud hearts. Permission was granted that the city's school children might inspect this mighty Mo. The children descended upon the ship with concealed screw drivers and various other types of instruments and with these tools they removed for souvenirs everything that they could. When the damage was surveyed, it was found necessary to send the Mo into repairs so that the damage might be corrected.

A striking parallel of these deadly friends is found for the Christian within himself. The vandal's instruments pry continually at the screws which hold together the Christian armor so that only a keen awareness of inevitable devastation can prevent it from becoming an actuality. The cold nose of the camel, sin, must never be permitted inside

by W. F. PATRICK

the house no matter how cold the night outside or you too shall have the experience of the Arabian who found out that the camel gradually muscled him out of the warm room all because he permitted the camel to put his nose inside to get it warm. Sin's cold nose is attached to an enormous body which crowds out everything once he gets his nose in. Only a keen awareness of sin can prevent the cold nose from deceiving you.

A second "from now on" might be worded thus by each Christian, "From now on I shall be conscious of God as owner and myself as steward." One means by which this might be accomplished by each boy and girl would be for each to have a DWO box. You too shall have the experience which Esther had when Aunt Annie made for her a Doing-Without Box. Esther was amazed at the money she saved each week by doing without and placing it in the box for missions.

For adults a literal DWO box might not be appetizing. However, a DWO advertisement might catch their fancy. Frequently you see advertisements which picture a poor fellow being tormented by caffeine. Then in the next picture in walks Postum and the devil, caffeine, goes out the other door usually being thrown out by Postum. This picture might be that which transpires when a Christian becomes conscious that God is his owner and that he is God's helper. God comes in and a DWO takes place. The devil walks out. The Christian who says, "From now on I shall be a steward of God more completely than I have in the past," opens the door for the devil to walk out.

The Russian people might never have issued this "from now on" if the Christian people of the world had stated the next "from now on" a century ago. "From now on I shall recognize my responsibility for carrying out the Great Commission," stated by a group of conscientious Christians might have changed the course of world history.

Time might be squandered in speculation over this matter. What you must be positive of is that such a future speculation shall not be given the opportunity to arise. Within a short time the nominating committees of the various Baptist churches will be asking the members to hold offices for the coming year. If you have made this "from now on" a part of your life, you shall consider it a challenge that can only be met after prayerful consideration with a "Yes." In so doing

you shall be showing that the Great Commission is a part of your Christianity and likewise with the visitation activities that shall be planned from time to time. Your presence shall acknowledge your desire to bring those children who should be enrolled in Sunday School to its doors so that they might be evangelized. Those friends of yours who are not Christians shall be on your prayer list and God shall open the door so that you might witness for Him over the backyard fence, on the golf course, in a sewing circle, wherever it might be. For those whom you cannot see and tell about Christ, the co-operative program will present an immediate way for transforming your funds into the Great Commission. During the next year it should be a part of your "from now on" to see that you as a member and that your church give more to the co-operative program than you did during the past year. Then you shall know that your "from now on" is being put into practice.

Regardless of the enthusiasm with which these individual "from now on's" are made, they shall fail to materialize into the constructive principle unless they are founded upon this one, "From now on I shall worship God." The emphasis should first of all be laid upon worship. It is not enough to go to church. The only sufficiency comes when you have prepared your heart for worship and that, as you sit within the walls of God's house, you commune with Him. In this hour of worship you shall see your sins and you shall say, "From now on I shall be keenly aware of sin and its consequences." Likewise, during the hour of worship you shall become conscious of God as the owner of your life and of yourself as His steward. Therefore, you shall express to God the times wherein you have failed to acknowledge Him as owner and declare, "From now on I shall be your steward." Stewardship requires that you recognize your responsibility for carrying out the Great Commission. As your two prior declarations have brought you closer to the God whom you worship, your attention shall be called to those of "unclean lips" who live about you. With an eagerness counseled with stammering you shall say, "From now on I shall recognize my responsibility for carrying out the Great Commission."

The hour of finality has been reached. An old era is passing away and a new age is emerging. Each Christian during this hour of worship should declare that "from now on" his life shall be different. "From now on . . . God."

Next Sunday's Lesson

by O. L. RIVES, Professor of Religious Education, Carson-Newman College

Lessons based on International Sunday School Lessons: the International Bible Lesson for Christian Training, copyrighted by International Council of Religious Education

TEXTS: Luke 9:49-50; Acts 11:22-30; 15:1-35; I Corinthians 1:10-13; II Corinthians 9:1-5; Philippians 1:15-18 (Larger)—Acts 11:27-30; 15:1-2, 22-23, 28-31; II Cor. 9:1-5 (Printed)—Lu. 9:50 (Golden).

The Larger Fellowship of Christians

These notes believe that all regenerated persons are members of the family of God; that all such persons are citizens of the Kingdom of Heaven; and that all Christians should love and respect each other. And it would be with this in mind that the above topic might be developed.

These notes also believe, however, that a church is composed of baptized believers who voluntarily associate themselves together to carry out the commands of the Lord Jesus Christ; and that the New Testament refers to this fact over and over again. For this and other reasons the departmental topic is used as a basis of discussion, which topic is entitled, "Good Will among Churches." The theme, then, could well be: "How Baptist Churches Work Together."

Helping the Needy (Acts 11:27-30)

Our denominational program of benevolence and beneficence is one that is close to the hearts of our people. It is a program that can be easily visualized by all alike. It is both a joy and a privilege for churches to pool their resources in order to look after the needs of the orphans in their destitution as well as to provide for the necessities of the aged who have given their lives in service to the churches. In times of emergency or disaster, the churches have ministered to the dispossessed and the displaced. The above passage furnishes sufficient precedent for such a program, and Baptists have Scriptural basis for caring for the needy. Read Matthew 25:31-46, with this thought in mind.

Teaching the Deluded (Acts 15:1-2)

Ignorance and delusion are a blight in any area of thought and life. But in the area of the religious, they are most damaging. Countless multitudes throughout the world stumble and fall, both here and hereafter, because of religious error. Herein lies one of the greatest curses resting upon vast sections of mankind. How can it be approached by way of solution? The answer is found in a single sentence, namely: Teaching the Word of God under the guidance of the Holy Spirit in conformity with the truth wherever found. We never get far by lambasting or name-calling the deluded. A better way is to teach them, leading them gradually and patiently from darkness to light. It is a slow and painful process but it is the method that Jesus used.

Advising the Perplexed (Acts 15:22-23)

Many who have studied in the field of religious counseling under the guidance of the writer of these notes have spoken of the benefits derived from such a study. It is indeed a rich field from the standpoint of the service one may render. All about us are people who are perplexed and disturbed to

the point of distraction and even confusion. The spirit of the times in which we live contributes to this end. The world is filled with strife and too many live under too much stress and strain. In the midst of so much perplexity, the churches do well to provide the right sort of advice administered

The Young South

There are two new letters in our file this week, and I think you would enjoy reading both of them.

Suppose you draw lines under the words which tell you something about the friend who wrote this letter. Can you make a clear word picture of her?

Dear Aunt Polly:

I have been intending to write you for a long time, but never got to it. I was twelve years old on August 21. I have a little sister who will be two in December. I do not have any pen pals, but I would like to have many. I will answer every one I get. My favorite hobbies are reading and riding a bicycle.

We live on a farm and have over two hundred chickens. I am a member of Mt. Lebanon Baptist Church and attend services there. I am Assistant Secretary in my Sunday school class and Bible Readers' Leader in Training Union. If anyone wishes to write to me, my address is Route 8, Maryville, Tennessee.

Love,

WANDA SUE CUTSHAW

How many things did you learn about Wanda Sue? As you read a letter, could you see, in your mind, a twelve-year-old girl playing with a baby sister—perhaps teaching her to build a block house, or to say a new word? Or did you see a girl chuckling over a funny story in the book she was reading? Or a big girl helping to feed those two hundred chickens she mentioned? Maybe you saw Wanda Sue dressed in her nicest clothes, on the way to Sunday school, perhaps hurrying to get there early enough to help the class secretary make the records.

Maybe you have an entirely different picture of this new friend. Look at her letter again. Circle the words which you think tell the most interesting thing about Wanda Sue.

Now ask yourself, "Why did I circle those particular words?"

I believe your answer will tell you something which is always true of good friends. They share at least one special interest. Sometimes we say they have something "in common." It may be simply their ages. Or it may be a hobby, or a home situation, or

in the right manner for the right purpose. Let us ever bear in mind that people need such a ministry on a personal basis.

Gladdening the Obedient (Acts 15:28-31)

We rejoice ourselves and stimulate the spirit of rejoicing in others when we are conscious of having done the bidding of the Lord. Such was the case in the instance before us in this passage. The Jerusalem Church sent this type of message to the Antioch Church and to the brethren in the surrounding area. There are those who consider Acts 15 as the basis of what we know today in Baptist life as district associations or state conventions. Certainly the guiding principles for these are to be found in this chapter.

church jobs, or a school grade, or birthdays—or many, many other things.

That is one reason you have enjoyed choosing pen pals from your Young South column. You have an opportunity to select someone your age, or with an interest which appeals to you. Sometimes it is an interest which you haven't thought about before, but it sounds like you would enjoy it too. So you write a get-acquainted letter and before long you have a new friend, some new information, and perhaps a new hobby!

Here is the other letter which I mentioned at the beginning of today's column. It gives a word picture of a friend with interests which differ from Wanda Sue's. Yet there are some things very much alike. Look for some of these as you mark the words which help to make your word picture.

Dear Aunt Polly:

I will be thirteen tomorrow—August 23. I have been a little busy this week getting ready for my birthday party. I will be in the eighth grade when school starts, and it starts Monday, August 27. I am a member of Central Baptist Church.

I have three sisters and two brothers. I am the youngest child in our family.

My favorite outdoor sports are baseball, basketball, and swimming.

I would like to have pen pals from thirteen to fifteen years of age. I will answer all letters that come. My address is Route 1, Martin, Tennessee.

Yours truly,

NAOMI LOWRY

Did you compare Naomi's picture with that of Wanda Sue? Perhaps you and Naomi would have more in common than you and Wanda Sue. If so, you will, of course, choose Naomi for your special pen pal this week.

Whichever girl you choose, tell her what it was in her word picture that made you think you'd like to know her better. Ask her some questions about herself. Tell her about *your* special interests. Invite her to answer your letter and to become one of your pen pals.

Love,

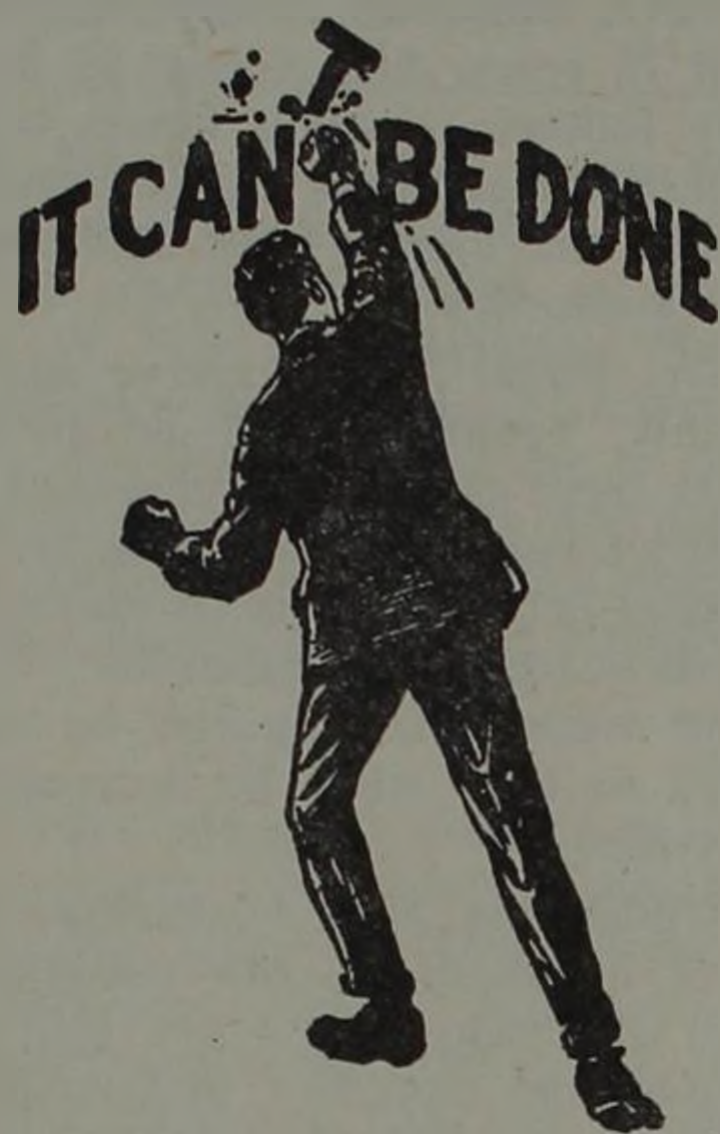
AUNT POLLY

BAPTIST AND REFLECTOR



Sunday School

JESSE DANIEL, Secretary



It CAN be done! Every association can plan to have group training schools in October. These meetings are for every Sunday school worker in every church in every association.

Last week we printed some helpful information from the Group Training school leaflet sent out by Mr. A. V. Washburn at the Baptist Sunday School Board. This week we would like to continue where we left off. Some of the information will be repeated in order to re-emphasize these steps of preparation.

1. Early in August call a supper meeting of pastors and superintendents to launch the effort. Dr. John Haldeman who has succeeded in building a great church says of training:

- _____ It will build the Sunday school in membership and average attendance.
- _____ It will lighten the load of the pastor by distributing responsibility.
- _____ It will solve the problems constantly arising in a growing Sunday school.
- _____ It will cause workers to receive joy in accomplishments.
- _____ It will cause the lost to be found and won.

Present a strong appeal for the schools showing that several small groups of churches cooperating will achieve two great results: (1) will enlist more churches and more workers in training, and (2) will provide opportunity for every worker to study his particular age-group book.

Secure the approval of the plan. Even if some pastors feel their church cannot support the schools, urge their agreement to the general plan so that it may become an associational project.

2. After approval of the plan, suggest a practical grouping of churches.

According to geographical locations plan for two to five churches in each group.

Select the host church for each group school.

Select the deans for each school from the pastors of other than the host churches if possible.

3. Later on work with the deans in selecting and enlisting the faculties. You would want to plan courses for each age group, at least one general administration book, and speakers for the inspirational or testimony periods for the five evenings.

Use the following form as a work sheet in planning the schools.

GROUP SCHOOL PLAN SHEET

Association _____ Date _____

Group No. _____ No. churches participating _____

Host church _____

Dean of school _____ Address _____

DEPARTMENT BOOKS TEACHER

Cr. Roll Dept. of the S.S. _____

Nur. Dept. of the S.S. _____

Beg. S.S. Work _____

Pri. S.S. Work _____

Jr. S.S. Work _____

Int. S.S. Work _____

Y.P.'s Dept. of the S.S. _____

Adults in the S.S. _____

Ext. Dept. of the S.S. _____

GENERAL BOOKS (one of these)

A Church Using Its S.S. _____

Building a Standard S.S. _____

True Functions of the S.S. _____

Place of the S.S. in Evangelism _____

INSPIRATIONAL SPEAKERS OR TESTIMONIES
Monday, Tuesday Wednesday, Thursday, and Friday.

Copies of these sheets will be supplied upon request from the Sunday School Department, Baptist Sunday School Board, 161 Eighth Ave., North, Nashville, Tennessee.



Training Union

CHARLES L. NORTON, Secretary

Camp Notes

Camp attendance this year surpassed all previous records. We feel that every effort made toward the promotion of camps will bring rich returns in the lives of those who attended. For the three Training Union weeks at Ridgecrest 1,419 registered from Tennessee.

More inspiring to our state workers is the advancement which has been made in our state encampments. For the Training Union week at Camp Linden, 169 registered. Although this was our first year at Camp Carson, 152 were reached for the week.

Below are a few of the impressions from Camp Linden:

"Thank you very much for Camp Linden. It has been an inspiration to me. I've enjoyed my meals too."—Nancy Holt, First Church, Greenfield. (Junior)

"Thank you for this good camp. We have had a good time swimming and playing games and we thank you for all the help."—Jeryl Phillips, First Church, Jackson. (Junior)

"I would like to show you my appreciation for this camp, although, I cannot, I'll try to by going back and putting what I have been taught to work in our Training Union."—Billie Louise Poston, Greenfield Church. (Intermediate)

"Camp has meant more to me this year than last because it was here this year that I gave my life for Christian work."—Rachel Broadbent, Blooming Grove Church, Woodlawn. (Intermediate)

"I am going home to become a better Christian and to live and witness better for my Christ. I liked all my teachers and the good Christian fellowship. I hope to come back next summer."—Gene Baker, Central Avenue Church, Memphis. (Intermediate)

"Camp Linden has been to me a spiritual

inspiration which strengthened me to bear the everyday problems that face me."—Evelyn Donnell, First Church, Jackson. (Young People)

"I thank God for the privilege of coming to camp and for giving me a life to spend in service for Him."—Oshanniar Maroney, Herron Chapel, Jackson. (Young People)
Impressions from Camp Carson:

"Camp Carson has been well worth the thirteen dollars because it has been well spent. I think it would be grand if every Training Union member could come to Camp Carson."—Ruth Headrick, Pleasant Grove Church, Maryville. (Intermediate)

"The classes and conferences have renewed my vigor for Training Union and made me want to work harder for the glory of God."—Sammie McCormack, First Church, Etowah. (Intermediate)

"Camp has helped me to understand how much Christ can mean to a person if they will only give Him first place in their heart."—Betty Rice, North Springfield Church, Springfield. (Intermediate)

"I am so happy that it has been revealed to me during this week where I am to serve God in the mission fields."—Virginia Helton, Pleasant Grove Church, Maryville. (Young People)

"Fellowship, love, devbtion, new friends, and God are a few of the wonderful things I have found at Camp Carson. Engraved upon my heart is the desire to take the initiative to make my union a little better."—Harold White, Park City Church, Knoxville. (Young People)

"Thank you for such a well-planned camp. The conferences have been helpful, the special messages inspiring, the recreational periods have been very enjoyable. I want to bring a larger group next year."—Hazel Wall, First Church, Cookeville. (Adult)



Woman's Missionary Union

MRS. M. K. COBBLE, President
MISS LAURA FRANCES SNOW
Young People's Secretary

MISS MARY NORTHINGTON, Executive Sec'y Treas.
MRS. DOUGLAS GINN
Office Secretary

WE HAVE NOT MOVED

So much of our mail is being delayed because it is addressed to Belmont Heights. Please continue to address us at 149 Sixth Ave., North, until October. Our new address is on our Guide Book, but we cannot move until our offices are ready.

* * *

The Women Like Camping

The largest attendance of any camp this summer was registered at Camp Carson for the Efficiency School, August 27-29. There were 400 who attended the conferences.

The missionaries Mrs. Buford Cockrum, Africa and Mrs. Vera Payne, Cherokee, N. C., were most interesting and inspiring. Our president Mrs. M. K. Cobble led the conference for young people's directors, led the devotional services, spoke on the convention meeting in San Francisco, and led the singing. This president was kept busy! The program was in the BAPTIST AND REFLECTOR of two weeks ago.

Each conference leader was at her best and all who attended seemed to feel that much information was received.

The Southern Union sent Mrs. William McMurry, Mission Study Chairman, to lead a conference and to bring a stimulating message on this important phase of our work.

An offering of \$200.00 was given Mrs. Buford Cockrum who is sailing next month back to Africa.

Next year we must have an auditorium for our meetings. If we give liberally we can build.

* * *

The Divisional Meetings

Please mark on your calendar the date and place of your divisional meeting. Interesting programs have been planned for the day and the evening for young people and B.W.C.'s.

Mrs. William McMurry, Southwide Mission Study Chairman, a missionary and state officers will be at each meeting. The theme is "CROWN HIM LORD OF ALL."

The meetings are as follows:

South Central, McMinnville, October 15, evening, B.W.C. and Young People.

South Central, McMinnville, October 16, all-day meeting.

Central Division, Springfield, First, October 16, evening, young people and B.W.C.

Central Division, Springfield, First, October 17, all day.

Southwestern, Jackson, First, October 18, all day.

Southwestern, Jackson, First, Young People and B.W.C. evening.

Northwestern, Dyersburg, First, October 19, all day.

Northwestern, Dyersburg, First, Young People and B.W.C. evening.

Northeastern, Morristown, First, October 22, Young People and B.W.C. evening.

Northeastern, Morristown, First, October 23, all day.

Eastern, Lenoir City, First, October 23, Young People and B.W.C. evening.

Eastern, Lenoir City, First, October 24, all day.

Southeastern, Athens, First, October 25, all day.

Southeastern, Athens, First, Young People and B.W.C. evening.

North Central, Murfreesboro, First, October 26, all day.

North Central, Murfreesboro, First, Young People and B.W.C. evening.

Chaplains Urged to Organize State Units

Several Southern States have units of the Baptist Chaplains Association. These groups will hold luncheon and business meetings at forthcoming State conventions. States not having a unit are urged to form one during the State convention this fall. Any chaplain or former chaplain can take the lead in organizing an association. If assistance is needed, in the formation of a new unit or in the matter of a program for presently existing units, these persons are invited to correspond with the president of the Southern Baptist Chaplains Association, Chaplain Dow Heard, Veterans Administration, Washington 25, D. C. Reports of any activities to Chaplain Heard for information will be appreciated.

Pastor Paul G. Kirkland of First church, Clarksville, preached in revival services at Spring Hill church near Ridge Top, resulting in 25 additions, of whom 12 were by baptism. Earnest A. Jones is pastor of this church which is only two years old.

Little West Fork church, near Clarksville, was led in revival services July 31-August 12 by pastor Glen C. Rambo of Tyng Memorial church, Peoria, Illinois, during which there were 18 additions to the church, 12 being by baptism. There were four reclamations and three persons dedicating their lives to God's service. Singing was led by the pastor B. A. Coghill.

Dr. Andrew Potter, Oklahoma Baptist Leader, Dies

Dr. Andrew Potter, Oklahoma Baptist General Convention state secretary for the past 18 years, died August 29 in Oklahoma City following serious illness which struck him in mid-summer. He is survived by Mrs. Potter and a son, Billy Andrew, an Oklahoma attorney.

Dr. Potter was a native son of Henry county, Tennessee, and did an outstanding work there as pastor of churches in Western District association which he served as missionary before going to Oklahoma in 1913 to serve as pastor at Collinsville, Waurika and Enid whose First church he served from 1917 to 1933 when he accepted the secretaryship.

Under his able leadership the Baptist work in Oklahoma saw remarkable expansion with more than 100% gain in membership in the churches, and mission receipts rising from \$147,079 in 1933 to \$1,574,126 in 1950. Leading Oklahoma from Cooperative Program gifts of \$17,923.35 the year he became secretary to \$321,299.87 the past year, he saw his adopted state become a leader among states in its outreach through Baptist missions, education and benevolences. Four hospitals, two of which have been added to in recent years, are among Oklahoma Baptists gains during this period; also the construction of an orphanage, nationally known for its beauty and efficiency of management, the initiation of the state's Baptist Foundation, the development of Oklahoma Baptist University, and the promotion of a vigorous state mission organization.

Dr. Potter believed in gathering about him able helpers to carry on the work of the denomination, affirming "an executive is a failure who does not bring into his organization men who can do their work better than he could do it."

Funeral services were held September 1 from First church, Oklahoma City, with Pastor Hershel H. Hobbs assisted by Oklahoma Baptist University's president John W. Raley.

Good results were reported from tent revival services sponsored by the Spring Street Mission of First church, Clarksville, Paul G. Kirkland, pastor. The preaching was done by R. G. Shelton of Stamping Ground, Ky., former Cumberland association missionary and singing was led by Pastor Kirkland.

John Barry and W. Boyd Brookshire were ordained to the ministry at Central church, Alcoa, August 26, with E. J. Ingle preaching on "The Glories of the Ministry" and incorporating the charge in his message, the ordination prayer being led by P. B. Baldridge, and the newly ordained each being presented a Bible by their pastor, Paul Watson. Brother Brookshire enters Carson-Newman College this fall and Brother Barry will assist pastor Watson in the work at Central church.

East Tennessee NEWS

by Lloyd T. Householder, Maryville

Dr. J. G. Hughes, pastor of Union Avenue church, Memphis, returned to his old pulpit at First church, Kingsport, as supply on August 19, for both services. He is always a welcome visitor in East Tennessee where he is known and loved by a great number of people. Dr. Albert McClellan director of publications, Executive Committee, SBC, was guest preacher at Kingsport August 26.

Here are some interesting notes from First church, Greeneville: Dr. Clyde T. Francisco, head of the Old Testament Department of Southern Seminary, recently conducted a week of Bible conferences. On July 1, Pastor and Mrs. William McLean Grogan became the proud parents of twin boys, James Lewis and Joseph Lee. The contract has been let for the completion of the new auditorium. Congratulations to this good church and pastor.

Tolbert W. Nelson became pastor July 1 of the church at Church Hill coming from First church, Rose Hill, Virginia. He is a graduate of Mars Hill and Carson-Newman colleges. We welcome this good man to the fellowship of East Tennessee Baptists.

Dr. Charles W. Pope, Executive Secretary of Tennessee Baptist Convention, occupied the pulpit of First church, Jefferson City on August 9 and 16. Dr. Pope was the popular pastor of this good church for a number of years before becoming our Executive Secretary. During his stay in Jefferson City, he and Mrs. Pope were at home again in the parsonage while Dr. and Mrs. Warden were away on vacation. On August 19, William Eugene Spears, a recent graduate of Southern Seminary, and summer worker with Island Home church, Knoxville, was guest preacher.

First church, Lenoir City, recognized the first anniversary of Mr. John Husser as music and educational director of the church. J. E. Ledbetter is pastor. He has just recovered from an illness that kept him out of his pulpit for awhile.

Lloyd Helton, pastor of Hickory Cove church, Holston Valley association, was guest preacher at the Rogersville church August 5. On July 29, Dr. L. C. Kelley, of Clear Creek Mountain Preacher's School, preached at a union service in the Presbyterian church in the city. On Sunday morning, August 26 Mr. H. D. Blanc, prominent Baptist layman of Knoxville spoke to a large crowd at the Rogersville church. Pastor Hobart Ford is leading this good church in a marvelous way.

Forest L. Ferkins, representative of United Dry Forces of Tennessee, spoke on a Sunday evening this summer at First church, Loudon, W. Paul Hall, pastor.

Dr. Carl J. Giers, Pastor of First church, Chattanooga, is assisting in the Home Mission Board's Simultaneous Revival for Southern Baptists at Portland, Oregon, September 9-19.

Hixson church, near Chattanooga, has called Charles Works of Evansville, Indiana, as pastor, and he is already on the field.

After a splendid ministry as pastor of Northside church, Chattanooga, Carl Rogers has resigned to become associated with the Wells Stewardship Organization.

Lookout Mountain church, Chattanooga, dedicated its new auditorium on July 8.

This delayed item will be of interest to a large number of friends of Boyd's Creek church, Sevier county, and pastor and Mrs. L. W. Clark. Dr. C. W. Pope preached the sermon as a beautiful new church building was dedicated. Brother Clark had announced his retirement, but on July 1, the church recalled him as pastor and he accepted. On Wednesday evening July 25, a surprise appreciation service was held for Pastor and Mrs. Clark with the church presenting them a beautiful gift of red roses. These servants of the Lord have served well in many places for many years.

Park Lane church, Knoxville, W. M. Pinson, pastor, conducted a tent revival July 25-August 3. Homer Martinez of Georgetown, Ky., was the evangelist, Anderson McCulley of Knoxville, the singer, and Mrs. B. M. Gibson, blind singing pianist, the accompanist. The results of the meeting were 13 professions, 10 additions by letter, and 45 rededications.

Mount Olive church, Knoxville, has called Wyman E. Wood, of Hickory, North Carolina, as pastor, and he is on the field, succeeding Dr. John M. Sykes, who went recently to First church, Cookeville.

Lloyd T. Householder, Jr., was guest preacher at Mount Olive church, Knoxville, August 19 and 26. He enters Southern Seminary at the beginning of the fall session in September.

First church, Alcoa, has called as pastor, W. H. Lodwick, of Erlanger, Kentucky. He succeeds Lacy Basham, who moved to Florida recently.

Roy Anderson, president of Harrison-Chilhowee Academy supplied the pulpit of Calvary church Sunday morning August 26. Benton Williams, a member of the academy faculty was the preacher at the evening service.

Sunday August 26, Central church, Fountain City, Charles S. Bond, pastor, observed Teacher Appreciation Day, giving special recognition to the teachers in the Sunday school. This ought to be a good day for any church. In many instances we fail to appreciate the faithful people who carry on this important work in all our churches.

Sammy DeBord was the preacher in a Youth Revival at Lincoln Park church, Knoxville, August 12-19.

Charles Ausmus, pastor of Lincoln Park church, Knoxville, assisted Pastor Wyatt Parker at Dawson church, Philpot, Kentucky, in a revival, August 1-10.

At the August business meeting, Smithwood church, Knoxville, licensed Jimmy Hutson to preach the gospel. He plans to enter Carson-Newman College in September.

On July 29, Ramsey Heights, mission of Fifth Avenue church, Knoxville, celebrated its third anniversary. Located in a growing section of suburban Knoxville, it offers a splendid opportunity for service.

Revival services at Fifth Avenue church, Knoxville, W. Walter Warmath, pastor, will be conducted September 16-23 with Dr. Elwin Skiles, pastor of First church, Pensacola, Florida, as preacher.

July 25, Jack D. Hancox was ordained to the full work of the gospel ministry by First church, Maryville. Mr. Hancox is the son of the superintendent of the Sunday school at that church and has been called as pastor of Hopewell church, Owensboro, Kentucky. He is a student at Southern Seminary, Louisville.

Broadway church, Knoxville began a revival August 26, with Angel Martinez, nationally known evangelist as the preacher. Elmer Bailey, church music director is in charge of the music. Dr. Ramsey Pollard is the pastor.

Lonsdale church, Knoxville, has called as pastor, E. H. McCollum, a recent graduate of Southern Seminary, Louisville. He succeeds J. Burch Cooper, now pastor of Everett Hills church, Maryville.

McCalla Avenue church, Knoxville, is making plans for the construction of a new auditorium at an estimated cost of \$300,000.00. E. Warren Rust, pastor, has just finished a revival with Timothy Street Mission, operated by McCalla Avenue.

East Tennessee News

(Continued)

First church, Maryville, has called Joe G. Walsh, Tulsa, Oklahoma, as minister of Music and Education, and he has accepted. He came from University church, Tulsa, and began his work September 1.

Burtis Fair, has assumed his work as pastor of Calvary church, Alcoa, coming from Valdese, North Carolina. He is a native of Kentucky and a graduate of Union University.

An interesting news item recently released in East Tennessee indicates that First church, Jellico has withdrawn from the Kentucky General Association, and has joined Campbell County Association, and will ask for membership in the Tennessee Baptist Convention at the convention in Chattanooga. We welcome this splendid church to the fellowship of Tennessee Baptists. R. R. Lloyd, Sr., is the pastor.

Chilhowee association met with Providence church near Maryville on August 16. Dr. Richard N. Owen, editor of the BAPTIST AND REFLECTOR, preached the introductory sermon. He brought a fine message on the general subject of missions. P. B. Baldrige, pastor of Pleasant Grove church, was re-elected as moderator.

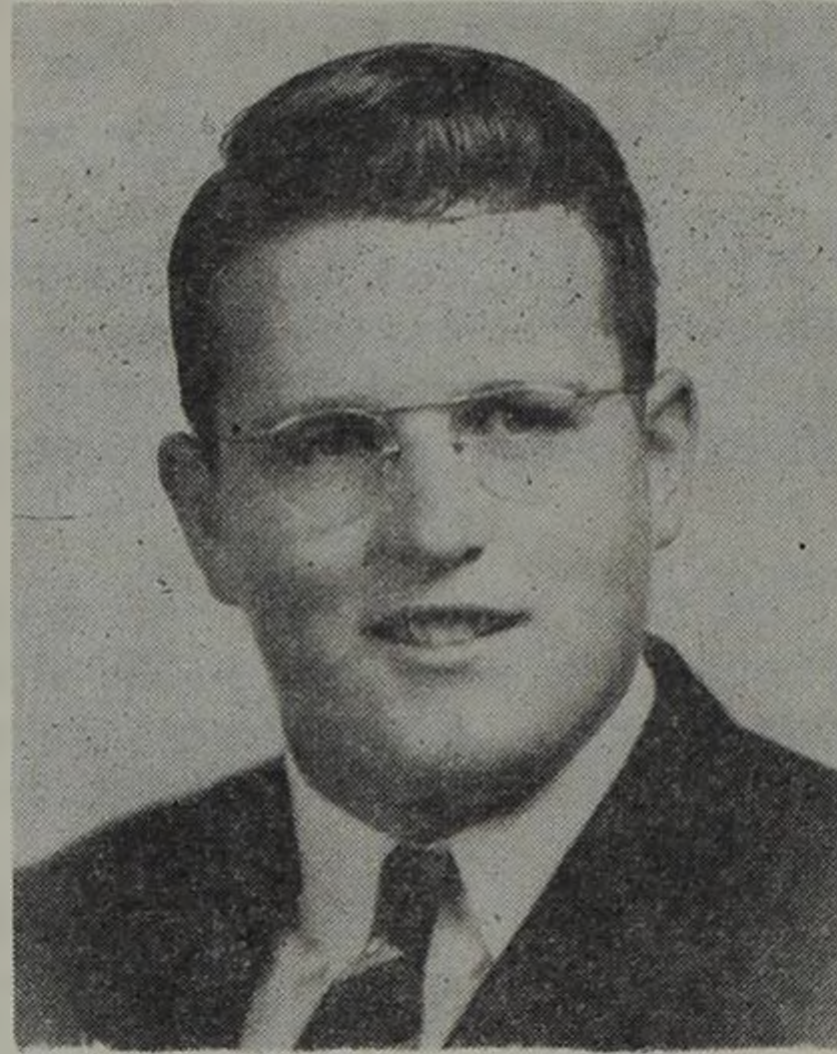
Charles Ausmus, pastor of Lincoln Park church, Knoxville, will be the preacher in the fall revival of Broadway church, Maryville, beginning September 24.

Carson-Newman College held a pre-school conference for faculty members at Camp Carson August 30 through September 1. Special speakers were Dr. Doak S. Campbell and Dr. C. W. Pope.

During the first month of the pastorate of J. Burch Cooper at Everett Hills church, Maryville, there were 15 additions to the church.

Crescent Beams, bulletin of Crescent Hill church, Louisville, Ky., recently carried the likeness of Dr. Rice A. Pierce who has become minister of specialized training and director of youth activities in that church. Dr. Pierce is the son of Mrs. Verna Pierce of Union City and holds the Bachelor of Arts degree from Union University, Bachelor of Laws from Cumberland University, Master of Theology from Southern Seminary, Louisville, Ky., and Doctor of Theology from Columbia University, NYC.

Every Baptist a Tither



DOUGLAS COOPER GUNTER

Douglas C. Gunter following his call to the gospel ministry was licensed to preach August 8 by First church, Monterey. Mr. Gunter who is 19 enters Union University, Jackson, on September 17 to begin his preparatory studies for the ministry.

Postmaster to Lodge Charges Against Quebec Priest

ST. JEROME, Que. (RNS)—Postmaster General Edouard Rinfret said here that criminal charges will be lodged against a Roman Catholic priest in St. Germaine Boule, Que., who is said to have burned mail addressed to townspeople by a Regular Baptist pastor.

"I regret to make charges against a person wearing a cassock," the federal cabinet minister told an audience of several hundred members of the St. Jerome Chamber of Commerce, "but the inviolability of Canada's mails must be maintained."

Mr. Rinfret, a Catholic, said "the Post Office has no alternative but to prosecute" the Rev. Alfred Roy, priest of the St. Germaine Boule parish, who a postal inspector reported had ordered the local postmaster, Wilfred Begin, to turn the Baptists' mail over to him.

He suggested the serious consequences that would result if a non-Catholic clergyman gave instructions similar to those attributed to Father Roy, or if Canada's 11,000 postmasters intercepted mail addressed to bishops or priests.

The postmaster general was outlining the activities of the Post Office Department when he suddenly announced that, if his audience permitted, he would make a brief digression to discuss the St. Germaine Boule case. He said the details of the manner in which the prosecution will be handled are being worked out at Ottawa.

The decision to prosecute the priest grew out of a complaint by the Rev. Leslie G. Barnhart, pastor of the Regular Baptist church at LaSarre, Que., that mimeographed sermons he addressed to St. Germaine Boule residents were not delivered. The hamlet is

Define Church-State Relations

RIDGECREST, N. C.—(RNS)—Teaching of religion and morals by public schools from their own "distinctive viewpoint" does not constitute a violation of the Church-State separation principle, a Southern Baptist conference on Church and State declared here.

Some 350 participants further stated they considered it constitutional "if public schools, colleges or universities give credit for academic work completed under sectarian instruction outside of public school buildings."

They recognized, however, that "some dangers are involved and some excesses are possible" when public schools teach religion and morals. They also reiterated that a violation of Church-State separation occurs "when public schools are used for the purposes of sectarian religious instruction."

The conference was sponsored jointly by the Social Service Commission of the Southern Baptist Convention and the Convention's delegation on the Baptist Joint Committee on Public Affairs, although its report stressed that the findings did not constitute an official Southern Baptist policy statement.

In dealing with other current Church-State issues besides the question of religion and public education, the Southern Baptist representatives, who came from 17 states and the District of Columbia, said:

(1) "It is our conviction that the State would be within its rights to impose taxes upon any revenue-producing property or holdings of religious institutions, schools, churches, etc. . . . We are not in complete agreement that the State would have the right to tax church property which is used for religious worship or teaching purposes."

(2) "It is, in our belief and conviction, a direct violation of the separation principle for sectarian owned and operated hospitals to receive tax money for new buildings, maintenance costs, salaries and services. Such institutions exist for the purpose of teaching and propagating a distinct religious faith and therefore must not be tax supported."

(3) "In those areas where the State has direct dealings with individual citizens such as chaplains for the armed forces, G.I. beneficiaries, etc., we see no violation of the separation principle."

(4) "The representation of the United States government to the Vatican, through the official channels of an ambassador or by the personal representative of the President, is a positive violation of the principle of separation of Church and State."

43 miles from the city of Rouyn in northwestern Quebec.

Postmaster Begin was dismissed from his position after he admitted turning the mail over to Father Roy, who was quoted as saying that he burned the material because he felt it was dangerous to the people of the community.

It Can Be Done

I have always heard it said, when a pastor retires, he should move out of the community. They say a preacher, who has been pastor of a church for a long time, cannot continue to live in the community and keep his membership in the church that has loved him and followed his leadership without being a "thorn in the flesh" to his successor. I was pastor of the Grace Baptist church for nineteen years. I retired when I was 75. I bought the parsonage from the church and continued to live in the same house and continued to attend the church that I loved with all my heart. This relationship has continued now for five years, and I am giving you below a letter that I received from my beloved pastor a few days ago.

In order to get a letter like this, you must love the Lord with all there is of you. You must love the church better than you love yourself. You must love your pastor and pray daily for him. You should be able to say, "He must increase but I must decrease." YES, IT CAN BE DONE.

L. S. Ewton

* * *

Dr. L. S. Ewton
1011 North 5th Street
Nashville, Tennessee

Dear Dr. Ewton:

Just before I leave for my revival at the First Baptist Church, Hollis, Oklahoma, I want to write you a brief letter on the occasion of your 80th birthday. It would be impossible for me to tell you what you mean to me. It has certainly been a joy during these five years I have been pastor of Grace Church to have fellowship with you.

You have been a constant blessing and benediction to my own heart and life. You have been a constant inspiration to me the way you have backed up the work since your retirement, and the way you have loved your pastor.

God has been good to you in many ways. He has not only blessed you with a strong physical body, but with a great heart and soul; and he has richly blessed you with a choice companion.

I trust that you will have much joy and happiness on your 80th birthday and that God will spare you to us for many years to come. It certainly has been a joy on my part to try to follow a man like you in the pastorate.

May the richest blessings of God continue to rest upon you for many years to come.

Lovingly, your pastor
W. L. Stigler

Too many hands operating too many scissors explains why so many scraps have been left over from what was supposed to be a pattern for peace.—*Construction Digest*.

New Church Building Directive

WASHINGTON, D. C.—(RNS)—The National Production Authority has announced the criteria by which applications from churches and other religious organizations desiring to undertake building projects will be judged.

A new construction control order now in effect requires specific approval of the NPA for any building which will need more than two tons of steel or 200 pounds of copper or aluminum.

A 60-day ban on all building starts is presently in effect under this order, but is scheduled to be lifted October 1. When it is, the NPA said here, applications from religious groups will be rigidly screened.

Church construction projects which are already under way and where, in the NPA's words, "failure to complete such construction would be uneconomic, or would cause material loss or waste" will be given allocations of materials, even to the extent of postponing other projects which ordinarily would enjoy higher priority.

Religious groups asking authorization for new churches, schools, hospitals, or other facilities in "areas adjacent to military establishments or defense plants and projects" will be given a Class I priority.

In non-defense areas, a Class II priority may be granted to church-sponsored building projects which are deemed vital to the national health, safety, or welfare and where postponement would be detrimental to the public interest.

Where construction is required to repair damage caused by a fire, flood, or disaster, a Class III priority will be granted.

Other church building projects can be approved for a Class III priority where, according to the NPA directive, "such construction is essential to meet the needs and requirements of the community."

"Community need shall be considered only when certified by responsible government officials."

If the supply of building materials in a given area is not sufficient to meet the needs of all priority construction projects in that area, the NPA will determine the relative essentiality of the competing projects and will make allotments accordingly. The action of the NPA Facilities Bureau in such cases will be final, subject only to review by the Construction Appeals Board.

NPA officials explained that a priority is, at best, only a "hunting license," authorizing the builder to look for building materials and giving him a priority in buying them, if he finds them. An allotment, on the other hand, is a specific order from NPA directing a building supply dealer to fill a given order.

In a further paragraph of its directive, the NPA said that priority construction, commencement of which can be postponed without serious detriment to the national in-

terest, shall receive no allotments during the October-December quarter of 1951.

A very tight situation is expected in building materials, particularly steel and copper, during the last quarter of this year. No church or school construction which fails to receive a priority can be undertaken at all until further notice.

While controls do not affect buildings using less than two tons of steel or less than 200 pounds of copper and 200 pounds of aluminum, in effect the only buildings that can clear this barrier are small frame structures or cinder block buildings.

NPA officials point out that the average 5-room house uses up 1,485 pounds of steel nails alone. In the case of these small control-free structures, no priority or allocation help will be available, and it will be up to the builder to find for himself materials not claimed by priority holders.

The concluding paragraph of the NPA directive in connection with "construction for religious purposes" warns officials who pass on church applications that "the very small quantity of controlled materials to be available for allotment by the NPA for the items of construction above referred to will require the most rigid application of all limiting provisions of this criteria."

Catholic Bishops Take Loyalty Oath

BUDAPEST—Led by Archbishop Julius Czapik of Eger, the Hungarian Bench of Roman Catholic Bishops took the oath of allegiance to the Communist People's Republic at a public ceremony here attended by leading members of the government.

Pledges signed by the bishops included promises of loyalty to the government and of cooperation in efforts to strengthen Hungary's economic and political life.

The bishops' pledge came nearly two years after the issuance of a government decree ordering everyone on the public payroll to take the loyalty oath. The bishops announced then that priests, who had been classed as State-paid civil servants, were at liberty to swear the oath, but they said they themselves could not do so except with "the permission of the Holy See."

ASSOCIATION MINUTES

—may be secured from your own **Baptist Press**. Dependable printing at money-saving prices. Call 42-6594 or write us at 412 Demonbreun St., Nashville 3, Tennessee.

CURLEY PRINTING CO.

Treasurer's Quarterly Report

All Tennessee Baptists will rejoice in the steady and substantial increase in receipts to the Cooperative Program. Receipts through July 31, 1951 amounted to \$1,202,139.96 as compared with \$1,067,749.91 at this same time last year. Gain over last year is \$134,390.05.

Designated gifts amounted to \$399,118.01 and Foundation receipts were \$139,582.65. Total receipts for the first nine months of the present Convention year amounted to \$1,740,840.62. The receipts recorded here include those gifts received by us from November 1, 1950 through July 31, 1951.

Chas. W. Pope, Treas.

| | Cooperative Program | Designated and Reported | Foundation |
|--------------------|---------------------|-------------------------|------------|
| BEECH RIVER | | | |
| Beacon | 14.05 | 4.30 | |
| Chapel Hill | 5.00 | | |
| Cross Roads | 10.00 | | |
| Darden | | 15.63 | |
| Franks Chapel | 9.75 | | |
| Friendship | 100.36 | | |
| Hinkle | 26.95 | 21.25 | |
| Huron | | 5.55 | |
| Lexington, First | 1,320.00 | 376.94 | 175.00 |
| New Beech Grove | 7.00 | | |
| New Fellowship | 56.50 | | |
| New Hope | | 11.60 | |
| New Prospect | 5.00 | 5.00 | |
| Parsons | 1,952.89 | 173.39 | 220.00 |
| Perryville | 22.43 | 5.00 | |
| Pine Grove | 43.70 | 38.20 | |
| Rock Hill | 181.91 | 20.15 | 20.31 |
| Saltillo | 21.00 | | |
| Sardis Ridge | | 6.66 | |
| Scotts Hill | 69.00 | 21.80 | |
| Standing Rock | 1.00 | | |
| Tomlin Chapel | 5.00 | | |
| Union | 112.22 | 75.44 | |
| Wildersville | | 43.98 | |
| Association | | 8.16 | |

| | Cooperative Program | Designated and Reported | Foundation |
|---------------------|---------------------|-------------------------|------------|
| BEULAH | | | |
| Alamo | 80.00 | 26.00 | 100.00 |
| Aldredge | 80.00 | 10.32 | |
| Bethel | 25.00 | 25.00 | |
| Beulah | 205.68 | 142.68 | |
| Cypress Creek | 40.35 | | |
| Fairview | | 15.00 | |
| Gibbs | | 47.00 | |
| Hornbeak | 15.50 | 24.50 | |
| Johnson Grove | 106.00 | 193.72 | |
| McConnell | 202.34 | 67.87 | |
| Macedonia | 165.91 | 75.00 | 30.00 |
| Martin, First | 1,823.10 | 822.28 | 700.89 |
| Mt. Moriah | | 18.71 | |
| Mt. Olive | 175.98 | 30.53 | |
| Mt. Pelia | 235.54 | 163.33 | |
| New Concord | 45.00 | 35.00 | |
| New Home | | 77.34 | |
| New Salem | 632.41 | 472.22 | |
| Oak Grove | 121.00 | | |
| Obion | 44.29 | 127.54 | 1.85 |
| Pleasant Grove | | 43.75 | |
| Pleasant Hill No. 1 | | 34.00 | |
| Pleasant Hill No. 2 | | 30.00 | |
| Reelfoot | 100.00 | 117.66 | 74.44 |
| Ridgely | 845.55 | 237.02 | 221.40 |
| South Fulton | 140.00 | 145.50 | |
| Tiptonville | 180.09 | 159.67 | |
| Troy | 114.79 | 49.41 | |
| Union City, First | 6,779.70 | 1,632.43 | 544.50 |
| Walnut Log | | 7.00 | |
| Woodland Mills | 328.22 | 120.33 | 43.50 |
| Wynburg | 28.15 | 48.92 | 50.00 |
| Association | | | 15.89 |

| | Cooperative Program | Designated and Reported | Foundation |
|------------------|---------------------|-------------------------|------------|
| BIG EMORY | | | |
| Beech Park | | 60.65 | |
| Bethel | 18.00 | | |
| Big Emory | 139.03 | | 25.00 |
| Caney Ford | 18.00 | 72.00 | |

| | Cooperative Program | Designated and Reported | Foundation |
|--------------------|---------------------|-------------------------|------------|
| BIG HATCHIE | | | |
| Allen | | 13.80 | 69.75 |
| Antioch | | | 45.00 |
| Ashport | | 14.02 | 5.20 |
| Brighton | 1,770.65 | 406.65 | 60.00 |
| Brownsville | 4,967.61 | 1,320.41 | 774.68 |
| Charleston | 116.64 | 112.21 | 9.71 |
| Covington | 6,816.51 | 846.53 | 259.94 |
| Fellowship | 8.60 | 10.00 | 28.46 |
| Garland | 477.32 | 126.52 | |
| Grace | 132.89 | 29.33 | |
| Harmony | 379.00 | 163.83 | |
| Henning | 124.47 | 145.57 | |
| Holly Grove | 548.52 | 61.39 | 5.00 |
| Keeling | | 56.00 | |
| Liberty | 910.67 | 178.91 | 50.00 |
| Mt. Lebanon | 16.05 | 22.75 | |
| Oak Grove | 838.90 | 203.91 | 1.50 |
| Olive Branch | 21.91 | | |
| Pleasant Grove | 138.17 | 120.21 | |
| Ripley | 1,730.25 | 1,066.45 | |
| Salem | | 3.10 | |
| Smyrna | 150.00 | 72.33 | |
| Stanton | 766.30 | 307.91 | 200.00 |
| Walnut Grove | 158.55 | 29.50 | |
| Woodland | 907.29 | 50.00 | |
| Woodlawn | 65.41 | 133.40 | |
| Zion | 275.00 | 69.16 | |

Harrison-Chilhowee Enlargement Campaign

September 16

State-wide Kick-Off Day

| | Cooperative Program | Designated and Reported | Foundation |
|-----------------------|---------------------|-------------------------|------------|
| BIG HATCHIE | | | |
| Mahan | | 15.70 | |
| Middle Creek | | 94.18 | 45.85 |
| Mossey Grove | | | 12.00 |
| Oakdale | 914.24 | 64.52 | |
| Oak Hill | 86.91 | 115.97 | |
| Petros | 209.02 | 117.00 | |
| Pine Orchard | 4.00 | 17.00 | |
| Piney | 72.65 | 25.00 | |
| Pleasant Grove | 30.00 | 59.00 | 15.00 |
| Pond Grove | 105.66 | 26.00 | |
| Prospect | | 37.10 | |
| Riggs | 154.74 | 24.00 | |
| Riverside | 415.84 | 68.11 | |
| Rockwood | 4,082.51 | 116.40 | 213.00 |
| Slate Springs Mission | 1.78 | | |
| South Harriman | 1,004.86 | 286.52 | 80.00 |
| Sugar Grove | | 6.18 | |
| Sunbright | 5.00 | 25.97 | |
| Swan Pond | | 48.10 | |
| Trenton Street | 5,952.12 | 670.90 | 15.00 |
| Walnut Hill | 482.48 | 258.68 | 68.00 |
| Wartburg | 176.83 | 100.90 | 100.00 |
| Westel | 8.07 | 36.73 | |
| White Oak | 18.00 | 25.00 | |
| Whites Creek | 45.00 | 30.31 | 19.00 |
| Association | | 10.00 | |

| | Cooperative Program | Designated and Reported | Foundation |
|------------------|---------------------|-------------------------|------------|
| BLEDSON | | | |
| Bledsoe Creek | 25.00 | 25.00 | 25.00 |
| Chestnut Grove | 40.00 | 4.00 | 17.00 |
| Corum Hill | 84.61 | | 5.00 |
| Cottontown | | 85.20 | 66.43 |
| Dixon Creek | | 100.00 | |
| Fountain Head | 10.90 | 16.10 | 25.00 |
| Friendship | 42.40 | 65.00 | |
| Gallatin | 1,670.71 | 422.10 | |
| Hartsville | 547.86 | 191.08 | 166.64 |
| Hillsdale | | 84.40 | |
| Hopewell | 161.82 | 87.60 | 75.61 |
| Lafayette, First | 250.26 | 48.64 | 5.00 |
| Mitchellville | 135.38 | 84.00 | |
| New Hope | 8.95 | 63.02 | |
| Portland | 1,575.06 | 274.16 | 673.00 |
| Station Camp | | 10.00 | |
| Westmoreland | 10.65 | 16.70 | 10.00 |
| Association | | 2.00 | |

| | Cooperative Program | Designated and Reported | Foundation |
|-------------------|---------------------|-------------------------|------------|
| BRADLEY | | | |
| Bellefont | 99.74 | 45.77 | 33.00 |
| Big Spring | 1,466.55 | 184.91 | 5.00 |
| Blue Spring | 28.38 | 63.79 | |
| Calvary | 369.57 | 53.96 | |
| Candies Creek | 169.67 | 15.76 | |
| Cedar Spring | 5.00 | 123.75 | |
| Charleston | 146.65 | 88.50 | 5.00 |
| Cleveland, First | 5,250.00 | 325.24 | 500.00 |
| Clingan Ridge | 1.80 | | 6.22 |
| Corinth | | 73.00 | |
| Council | | 19.60 | |
| East Cleveland | 1.60 | | |
| Elkmont | .91 | | |
| Four Point | 4.60 | | |
| Georgetown | | 30.81 | |
| Goodwill | 3.42 | 48.00 | |
| Gum Spring | 1.04 | | |
| Lebanon | 10.00 | 16.00 | |
| Macedonia | | 115.02 | |
| Michigan Avenue | | 50.00 | |
| Mt. Carmel | 7.00 | 88.98 | |
| New Friendship | 60.38 | 37.35 | |
| North Cleveland | 200.00 | 33.75 | |
| Oak Grove | | 12.00 | |
| Philippi | 50.00 | 54.23 | 100.00 |
| Rutledge Memorial | | 30.00 | |
| Thompson Spring | 2.08 | | |
| Union | 3.37 | | |
| Victory | 107.68 | 1.50 | |
| Waterville | 20.69 | | |
| White Oak | | 16.50 | |

| | Cooperative Program | Designated and Reported | Foundation |
|--------------------|---------------------|-------------------------|------------|
| CAMPBELL | | | |
| Alder Springs | 4.22 | | |
| Anthras | | 3.00 | |
| Avenue | 260.28 | 53.20 | |
| Bear Wallow | 3.21 | 15.00 | |
| Big Creek Gap | | 17.00 | |
| Caryville | 99.00 | 38.25 | |
| Cedar Hill | 117.49 | 51.45 | |
| Chaska | 1.00 | | |
| Clinchmore | | 10.00 | |
| Cumberland View | | 35.17 | |
| Davis Creek | 1.36 | | |
| Demory | 58.00 | 50.00 | |
| Duff | 10.00 | 15.25 | |
| East La Follette | 130.60 | 13.75 | |
| Elk Valley | 198.04 | 38.95 | |
| Ford Town | 8.50 | 26.00 | |
| Grantsboro | 8.68 | 25.00 | |
| Habersham | 5.97 | | |
| Indian Creek | | 75.00 | |
| Jacksboro | 548.98 | 104.19 | |
| LaFollette | 2,985.90 | 445.40 | 705.00 |
| Lakeview | 37.45 | 12.70 | |
| Little Cove Creek | | 40.55 | |
| Long Hollow | 1.20 | | |
| Macedonia | | 23.00 | |
| Morley | 105.01 | 17.38 | |
| Morning Star | 1.95 | | |
| Murrayville | 17.00 | 18.50 | |
| Newcomb | 27.10 | 16.00 | |
| New Liberty | 2.15 | | |
| Oak Grove | 11.25 | | |
| Pioneer | 15.83 | | |
| Pleasant Grove | 7.50 | 5.63 | |
| Red Ash | 3.06 | | |
| Speedwell | 1.84 | 18.50 | |
| Sugar Hollow | 9.00 | | |
| Vaspar | 13.05 | 90.07 | |
| Victory | 8.25 | | |
| Westbourne | 1.29 | 15.00 | |
| West Beech Mission | 5.73 | | |
| West La Follette | 287.63 | 20.00 | |
| White Oak | 6.43 | | |
| Whitman | 3.67 | | |
| Woodson Gap | 5.41 | | |
| Association | 12.50 | 198.36 | 40.78 |

| | Cooperative Program | Designated and Reported | Foundation |
|-----------------------|---------------------|-------------------------|------------|
| CARROLL BENTON | | | |
| Atwood | 55.00 | 59.56 | 50.00 |
| Bruceton | 694.27 | 85.60 | 34.00 |
| Camden | 2,134.90 | 224.08 | 5.00 |
| Chalk Level | 8.75 | 20.00 | |
| Enon | 22.50 | | |
| Eva | 14.00 | 1.50 | 15.00 |
| Fairview | 33.53 | | |
| Grace | 38.53 | 8.60 | |
| Hopewell | 7.33 | 17.65 | |
| Howse | 111.93 | 61.59 | |
| Huntingdon | 1,483.43 | 394.45 | 240.00 |
| McKenzie | 600.00 | 134.18 | 5.00 |
| Missionary Grove | 52.64 | 83.65 | 30.00 |

Church Furniture
SOUTHERN DESK COMPANY

Selected oak tables with companion oak chairs of tough hickory dowel construction. Sizes from primary to adult, for every church need.



SOUTHERN DESK CO., HICKORY, N. C.

| | Cooperative Program | Designated and Reported | Foundation |
|---------------|---------------------|-------------------------|------------|
| Mt. Nebo | 7.04 | | |
| Prospect | 432.58 | 281.85 | 75.00 |
| Trace Creek | 244.51 | 60.63 | 50.00 |
| Trezevant | 987.22 | 278.56 | 15.86 |
| Union Academy | 88.75 | 6.80 | |
| Association | | 24.00 | |

CHILHOWEE

| | | | |
|----------------|-----------|----------|----------|
| Alcoa | 964.63 | 188.68 | |
| Armona | 155.00 | 102.00 | 160.00 |
| Beech Grove | 398.06 | 224.75 | 30.00 |
| Bethel | 268.85 | 60.50 | 30.00 |
| Broadway | 517.50 | 190.87 | |
| Cades Cove | 8.34 | 62.25 | |
| Calderwood | 6.35 | | |
| Calvary | 1,230.15 | 209.89 | 250.00 |
| Cedar Grove | 423.65 | 194.11 | 125.00 |
| Central | | 104.85 | |
| Central Point | 264.36 | 38.52 | |
| Chilhowee | 475.59 | 134.96 | |
| Cold Springs | | 19.78 | |
| Dotsons Chapel | 40.00 | 27.19 | 26.00 |
| East Maryville | 155.57 | 42.00 | 4.00 |
| Ellejoy | 76.95 | 23.80 | |
| Everett Hill | 1,453.11 | 236.00 | 170.50 |
| Forest Hill | 140.00 | 149.64 | 300.00 |
| Four Mile | 22.00 | 30.00 | |
| Friendsville | | 15.58 | |
| Grandview | 90.43 | 26.35 | |
| Happy Valley | 2.00 | 16.79 | |
| Hopewell | 3.85 | 13.39 | 2.00 |
| Kaeleys | 150.00 | 28.10 | |
| Laurel Bank | 16.00 | 17.38 | |
| Liberty | 36.13 | | |
| Marble Hill | 3.00 | | |
| Maryville | 13,136.53 | 5,571.16 | 2,101.21 |
| Midway | 10.70 | | |
| Millers Cove | 15.00 | | |
| Mt. Carmel | | 21.35 | |
| Mt. Lebanon | 1,196.32 | 572.19 | 63.00 |
| Mt. Zion | 28.25 | | |
| Niles Ferry | | 17.95 | |
| Oak Street | 100.00 | 24.80 | |
| Oak View | 133.65 | 70.83 | 8.21 |
| Old Chilhowee | | 20.00 | |
| Piney Grove | 363.15 | 527.89 | 92.00 |
| Piney Level | 40.00 | 100.20 | |
| Pleasant Grove | 1,031.26 | 308.07 | 105.00 |
| Prospect | 96.26 | 57.35 | |
| Providence | | 30.84 | |
| Rockford | 80.56 | 58.50 | 73.14 |
| Salem | 158.25 | 105.12 | |
| Six Mile | 136.42 | 19.33 | |
| Springview | 171.37 | 43.94 | |
| Stock Creek | 567.37 | 51.29 | 2.50 |
| Union Grove | 4.65 | 20.00 | |
| West Maryville | 122.94 | 118.13 | 30.00 |
| Wildwood | 214.03 | 77.21 | |
| Association | 21.01 | 126.19 | |

CLINTON

| | | | |
|------------------------|----------|--------|--------|
| Andersonville | 454.46 | 268.96 | 182.00 |
| Batley | | 20.60 | |
| Beech Grove | 325.09 | 55.06 | |
| Bethel | 257.44 | 37.56 | |
| Black Oak | 646.44 | 245.63 | 375.75 |
| Blowing Springs | 19.00 | 19.60 | |
| Briceville | | 41.00 | |
| Clear Branch | 351.35 | 27.30 | |
| Clinton, First | 9,839.27 | 527.20 | 884.00 |
| Clinton, North | 31.36 | 26.00 | |
| Clinton, Second | 601.25 | 44.79 | |
| Clinton, South | 162.02 | 127.83 | 50.00 |
| Cumberland Mountain | | 36.00 | |
| Dutch Valley | 16.00 | | |
| Farmers Grove | 47.97 | 15.04 | |
| Frost Bottom | 10.00 | 25.65 | |
| Glenwood | 1,080.00 | 249.91 | 145.00 |
| Grace | 2.75 | 5.00 | |
| Highland View | 1,131.01 | 90.53 | 17.00 |
| Hillvale | | 5.25 | |
| Island Ford | 17.03 | | |
| Lake City, First | 472.75 | 70.40 | |
| Lake City, Main Street | 224.93 | 61.85 | |
| Laurel Grove | | 5.00 | |
| Longfield | 104.67 | 5.97 | |
| Moore's Chapel | 150.00 | 67.00 | |
| Moran | | 7.00 | |
| Mt. Pleasant | | 30.00 | |
| New Mountain View | | 23.70 | |
| New Salem | 65.81 | 46.75 | |
| Oak Ridge | 4,695.29 | 676.88 | 648.25 |
| Oliver Springs | 614.96 | 157.21 | |
| Pleasant Hill | 100.00 | 80.00 | |
| Pleasant View | 6.00 | 53.90 | |
| Poplar Creek | 120.18 | 29.28 | |
| Red Hill | | 25.00 | |
| Robertsville | 1,305.16 | 415.89 | |
| Union Valley | | 50.00 | |
| Willow Brook | 124.39 | 4.65 | |
| Windrock | | 22.00 | |
| Wolf Valley | 3.81 | | |
| Zion | 38.60 | 36.50 | 25.00 |
| Association | 2.21 | 10.00 | |

CONCORD

| | | | |
|---------------|--------|--------|--------|
| Barfield | 296.06 | 58.23 | |
| Bradley Creek | 65.63 | 62.40 | 7.35 |
| Christiana | 68.67 | 89.89 | 51.16 |
| Concord | 55.85 | 90.51 | 25.55 |
| Eagleville | 296.59 | 171.21 | 195.01 |
| Fellowship | 106.93 | 17.60 | 36.38 |
| Florence | 50.00 | | |
| Greenhill | 9.04 | | 10.00 |

| | Cooperative Program | Designated and Reported | Foundation |
|-----------------------|---------------------|-------------------------|------------|
| Holly Grove | 146.78 | 31.40 | 10.00 |
| Lascassas | 216.10 | 102.45 | 85.00 |
| Midland | 110.92 | | 31.00 |
| Milton | 270.00 | 220.13 | 144.50 |
| Mt. Carmel | | 26.00 | |
| Mt. Herman | | 40.22 | |
| Mt. Pleasant | | 77.80 | 20.00 |
| Mt. View | | 54.76 | |
| Murfreesboro, First | 8,486.09 | 1,470.71 | 2,144.00 |
| New Hope | 7.25 | 87.33 | 10.50 |
| Nolensville Mission | 9.59 | 12.00 | |
| Patterson | | 10.00 | |
| Powells Chapel | 366.38 | 116.53 | |
| Republican Grove | 38.92 | 75.48 | |
| Smyrna | 311.31 | 180.75 | |
| Taylor's Chapel | 135.00 | 92.00 | |
| Third | 394.32 | 58.56 | |
| Walnut Street Mission | 16.30 | 15.00 | |
| Wards Grove | 91.00 | 13.00 | |
| Wayside | | 8.00 | 20.00 |
| Westvue | | 16.80 | 37.10 |
| Whitsetts | 313.13 | 67.75 | 18.13 |
| Woodbury Road | | 63.47 | |
| Association | | 23.00 | 44.94 |

CROCKETT

| | | | |
|----------------|----------|--------|-------|
| Alamo | 1,582.32 | 240.05 | |
| Barkers Chapel | | 12.10 | |
| Bells | 1,031.43 | 372.08 | 25.00 |
| Cairo | | 34.00 | |
| Cross Roads | 132.16 | 50.74 | |
| Friendship | 348.72 | 198.66 | 29.60 |
| Gadsden | | 82.36 | |
| Johnsons | 100.00 | 67.00 | |
| Maury City | 162.65 | 41.75 | |
| Midway | 10.00 | 28.55 | |

Harrison-Chilhowee Enlargement Campaign

September 16

State-wide Kick-Off Day

| | | | |
|-------------|--------|-------|--|
| Providence | 52.00 | | |
| South Fork | | 40.00 | |
| Walnut Hill | 352.89 | 24.26 | |

CUMBERLAND

| | | | |
|---------------------|----------|----------|----------|
| Alva | 13.00 | | 16.00 |
| Blooming Grove | 115.92 | 46.96 | 50.00 |
| Calvary | 42.50 | 32.80 | 56.25 |
| Clarksville, First | 9,367.13 | 1,179.20 | 1,415.81 |
| Clarksville, Second | 327.06 | 67.13 | 26.00 |
| Cross Creek | 112.06 | 36.00 | 74.31 |
| Cumberland City | 35.89 | 166.22 | 86.00 |
| Dotsonville | 37.38 | 25.00 | 12.00 |
| Erin | 53.49 | 98.54 | 69.95 |
| Gracey | 408.71 | 99.76 | 32.50 |
| Harmony | 30.00 | 81.00 | 13.00 |
| Hollins | | 14.00 | 21.00 |
| Immanuel | | 50.00 | |
| Kenwood | 105.86 | 2.00 | 17.00 |
| Kirkwood | 140.01 | 85.99 | 28.50 |
| Little Hope | 44.25 | 197.20 | 140.00 |
| Little West Fork | 40.00 | 65.00 | 65.00 |
| Mt. Herman | 198.95 | 148.98 | 43.00 |
| New Providence | 285.71 | 160.23 | 25.00 |
| Pleasant View | | 43.44 | 20.35 |
| Spring Creek | 465.47 | 484.76 | 260.00 |
| Tennessee Ridge | 30.65 | 42.34 | 30.00 |
| Association | | 25.00 | |

CUMBERLAND GAP

| | | | |
|-------------------|--------|--------|-------|
| Alanthus Hill | | | 50.00 |
| Big Springs Union | 5.00 | | |
| Blairs Creek | | 38.00 | |
| Cedar Fork | 1.70 | 13.20 | |
| Cedar Grove | | 59.31 | |
| Chadwell Station | 10.00 | 20.70 | |
| Cumberland Gap | 280.10 | 370.87 | 56.75 |
| Duncan Chapel | 3.20 | | |
| Fairview | 2.50 | 7.87 | |
| Forge Ridge | | 16.00 | |
| Gap Creek | | 17.00 | |
| Goin Chapel | | 10.00 | |
| Greers Chapel | 16.52 | 47.70 | |
| Harrogate | 147.15 | 124.93 | |
| Haynes Flat | | 12.50 | |
| Little Mulberry | | 12.00 | |
| Midway | | 16.00 | |
| Monroe | | 191.87 | |
| Mt. Zion | | 6.00 | |
| New Salem | | 8.00 | |
| New Tazewell | 33.44 | 114.65 | 25.00 |
| Pleasant View | 8.25 | 23.50 | |
| Pump Springs | | 7.00 | |
| Shawnee | 11.25 | 37.19 | |
| Springdale | | 16.44 | |
| Sumey Bridge | | 2.50 | |
| Tazewell | 55.05 | 41.50 | |
| Underwood | | 6.85 | |
| Walnut Hill | 120.50 | 187.00 | 1.50 |
| Wolfenbarger | 3.65 | 11.00 | |

CUMBERLAND PLATEAU

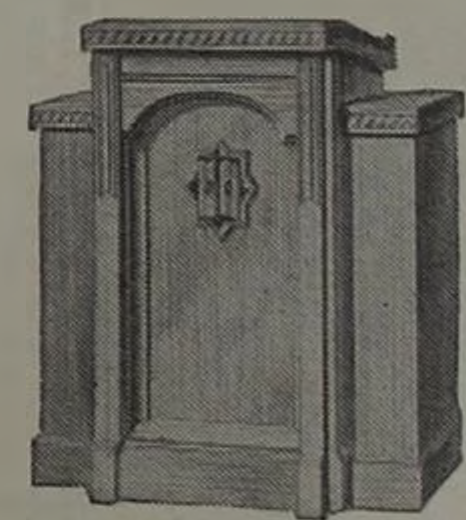
| | | | |
|----------------|--|-------|--|
| Clear Creek | | 10.00 | |
| Rankins Chapel | | 10.00 | |
| Union Grove | | 1.00 | |

DUCK RIVER

| | | | |
|-----------------------|----------|--------|--------|
| Air View | 20.00 | 20.00 | 2.00 |
| Altamont | 15.76 | | 12.17 |
| Cowan | 1,082.33 | 288.74 | 94.00 |
| Cross Roads | 75.54 | 10.36 | 5.00 |
| Decherd | 60.00 | 15.66 | 20.55 |
| Estill Springs | 115.09 | 85.97 | 19.00 |
| Highland | 537.88 | 209.69 | 102.26 |
| Huntland | 255.37 | 57.59 | |
| Keith Springs Mission | 10.00 | | |
| Liberty | | | 7.15 |
| Magness Memorial | 1,731.02 | 293.90 | 715.00 |
| Manchester | 172.00 | 56.99 | 26.00 |
| Maxwell | 95.72 | 13.25 | |
| Palmer | 19.00 | | |
| Prairie Plains | | 57.50 | 15.00 |
| Rutledge Falls | 4.16 | | 65.00 |
| Spring Creek | 6.00 | | |
| Tracy City | 38.00 | 13.12 | 26.00 |
| Tullahoma | 1,623.45 | 190.08 | 10.00 |
| Winchester | 1,297.93 | 212.87 | 36.00 |
| Association | | 28.90 | |

DYER

| | | | |
|--------------------------|----------|----------|--------|
| Beech Grove | 10.00 | 1.46 | |
| Bogota | 12.00 | 8.00 | |
| Bruces Chapel | | 5.00 | |
| Calvary Hill | 154.00 | 73.54 | 84.00 |
| Curve | 26.81 | 31.12 | 35.00 |
| Dyersburg | 6,355.29 | 2,007.08 | 625.00 |
| Emmaus | 25.47 | 4.00 | |
| Enon | 107.85 | 53.55 | |
| Fairview | 116.10 | 74.23 | |
| Finley | 30.00 | 91.27 | |
| Fowlkes | 150.00 | 46.99 | 100.00 |
| Gates | 30.00 | 74.71 | |
| Hales Point | 3.48 | | |
| Halls | 1,621.10 | 127.31 | |
| Harmony | 41.78 | 63.08 | |
| Hawthorne Chapel Mission | | 21.00 | |
| Hillcrest | 177.14 | 111.90 | 105.00 |
| Lenox | 69.25 | 16.20 | |
| McCulloughs Chapel | | 16.00 | |
| Macedonia | | 112.76 | |
| Midway Mission | 10.00 | | |
| Miston | 20.00 | | |
| Mt. Tirzah | 400.00 | 46.01 | |
| Mt. Vernon | 222.45 | 36.10 | |
| Newbern | 726.03 | 324.96 | |
| Parrish Chapel | | 18.35 | 28.52 |
| Ro Ellen | 36.36 | 88.60 | 39.00 |
| Southside | 173.23 | 79.06 | |
| Spring Hill | 73.88 | 31.58 | |
| Trimble | 1,030.42 | 149.84 | 30.00 |
| Woodville | 82.30 | 17.25 | |
| Zion Hill | | 6.00 | |
| Association | 6.83 | | |



For everything in fine Church Furniture

It will pay you to consider American Seating Company products when you build, remodel, or refurnish. Bodiform pews, chancel furniture, and architectural woodwork by American Seating Company craftsmen assure liturgical correctness and long service. Write for information desired.

Department 1123

American Seating Company

World's Leader In Public Seating
354 Nelson St., S. W., Atlanta 3, Georgia

| | Cooperative Program | Designated and Reported | Foundation |
|-----------------------|---------------------|-------------------------|------------|
| EAST TENNESSEE | | | |
| Bethel | 92.99 | 25.05 | 39.80 |
| Calvary | | 13.50 | |
| Cave Hill | | 31.28 | |
| Deep Gap | | 8.00 | |
| Del Rio | 42.79 | 83.65 | 16.68 |
| Denton | 103.50 | 50.00 | 28.00 |
| Forest Hill | 191.38 | 146.55 | 35.00 |
| Holders Grove | 50.00 | 20.00 | |
| Mannings | 94.39 | | |
| Maple Grove | | 15.20 | |
| Mt. Zion | 21.00 | | |
| Newport, First | 2,297.28 | 961.89 | 450.00 |
| Newport, Second | 576.41 | 111.68 | 54.95 |
| Pigeon Valley | | 8.25 | |
| Pine Springs | 10.00 | 20.50 | |
| Pleasant Grove | | 26.50 | |
| Rays Chapel | | 19.00 | |
| Shady Grove | 3.50 | 5.10 | |
| Swansylvania | | 39.25 | |
| Union | | 25.00 | |
| Wilsonville | | 18.53 | |
| Association | | 20.15 | |

| | Cooperative Program | Designated and Reported | Foundation |
|---------------------|---------------------|-------------------------|------------|
| ENON | | | |
| Red Boiling Springs | 33.03 | | |

| | Cooperative Program | Designated and Reported | Foundation |
|----------------|---------------------|-------------------------|------------|
| FAYETTE | | | |
| Galloway | 30.00 | 45.80 | |
| Kirk | 15.00 | | 22.50 |
| Liberty | | 14.00 | |
| Moscow | 296.86 | 321.83 | 6.21 |
| Mt. Moriah | 86.46 | 93.70 | 50.00 |
| Oakland | 58.26 | 31.75 | |
| Rossville | 250.13 | 202.30 | 2.00 |
| Somerville | 856.86 | 363.35 | 135.00 |
| Williston | 11.25 | 165.80 | |
| Association | 1.25 | 1.00 | |

| | Cooperative Program | Designated and Reported | Foundation |
|----------------|---------------------|-------------------------|------------|
| GIBSON | | | |
| Antioch | 791.63 | 154.10 | |
| Beech Grove | 313.98 | 72.87 | 1.00 |
| Bethel "H" | 167.94 | 39.69 | 5.60 |
| Bethel "Y" | 122.39 | 65.00 | |
| Bethlehem | 272.67 | | |
| Bethpage | | 127.97 | |
| Bradford | 1,042.64 | 187.76 | |
| Center | 584.92 | 147.50 | |
| Chapel Hill | 135.41 | 113.92 | |
| China Grove | 253.74 | 268.49 | |
| Clear Creek | 172.84 | 84.05 | |
| Dyer | 1,651.09 | 81.77 | |
| Eldad | 400.00 | 333.49 | |
| Fruitland | 354.68 | 54.25 | |
| Gibson | 770.87 | 315.92 | |
| Hickory Grove | 591.92 | 151.30 | |
| Humboldt | 5,656.42 | 676.48 | |
| Idlewild | 64.72 | | |
| Kenton | 449.79 | 158.26 | |
| Laneview "T" | 101.70 | 44.51 | |
| Lathams Chapel | 203.04 | 29.25 | |
| Lavinia | 41.40 | 48.85 | 2.50 |
| Medina | 1,913.08 | 106.72 | |
| Midway | 5.00 | 33.02 | |
| Milan | 3,474.08 | 650.01 | 400.00 |
| Mt. Pisgah | | 46.70 | |
| Mt. Pleasant | 46.05 | | |
| New Bethlehem | 189.00 | 151.60 | |
| New Hope | 180.00 | 149.30 | 6.00 |
| Northern | 35.00 | | |
| Oak Grove | 137.48 | 75.50 | |
| Oakwood | 280.00 | 37.00 | 150.00 |
| Poplar Grove | | 48.00 | |
| Poplar Springs | 169.75 | 34.85 | |
| Rutherford | 592.50 | 171.08 | |
| Salem | 827.57 | 61.61 | |
| Trenton | 2,028.75 | 4,480.85 | |
| Walnut Grove | 251.67 | 27.36 | |
| White Hall | 201.94 | 63.10 | |
| Association | | 15.00 | 7.87 |

| | Cooperative Program | Designated and Reported | Foundation |
|----------------|---------------------|-------------------------|------------|
| GILES | | | |
| Bradshaw | 14.20 | 15.36 | |
| Hannah | 21.65 | 11.10 | |
| Liberty Hill | | 18.75 | |
| Lynnville | 3.23 | 17.87 | 3.00 |
| Minor Hill | 28.20 | 32.20 | |
| New Hope | 134.00 | 47.04 | |
| New Zion | 8.10 | | 7.45 |
| Pulaski | 1,100.00 | 108.67 | 96.30 |
| Rock Springs | | 15.00 | |
| Scotts Hill | | 10.00 | |
| Shores | 6.78 | 4.11 | |
| Thompsons | 25.20 | 20.00 | 9.00 |
| Union Valley | 3.88 | 51.48 | |
| Welcome Valley | 6.50 | 6.00 | 11.00 |
| Wheelerton | | 8.67 | |

| | Cooperative Program | Designated and Reported | Foundation |
|-------------------|---------------------|-------------------------|------------|
| GRAINGER | | | |
| Adriel | 1.60 | 14.53 | |
| Avondale | 58.00 | 41.66 | 10.00 |
| Barnards Grove | 184.74 | 49.33 | 50.00 |
| Bean Station | 12.52 | 40.82 | |
| Block Springs | 24.20 | 70.00 | |
| Blue Springs | 186.98 | 54.83 | |
| Bridgeport | 3.00 | 5.00 | |
| Buffalo | 42.67 | 17.50 | |
| Central Point | 12.85 | 51.50 | |
| Head of Richland | 11.37 | | |
| Helton Springs | 93.16 | | |
| Indian Ridge | 115.58 | 53.34 | 7.00 |
| Little Valley | | 15.50 | |
| Locust Grove | 26.87 | 50.75 | |
| Mitchell Springs | | 59.42 | |
| Mouth of Richland | 1,059.26 | 347.61 | |
| Narrow Valley | 25.00 | 10.00 | |
| New Blackwells | 11.13 | 71.01 | |
| New Corinth | 38.03 | | |
| New Prospect | | 4.36 | |
| Oakland | 242.00 | 53.36 | 95.00 |
| Powder Springs | 40.91 | 31.60 | |
| Puncheon Camp | 11.50 | 50.00 | 30.00 |

Harrison-Chilhowee Enlargement Campaign
September 16
State-wide Kick-Off Day

| | Cooperative Program | Designated and Reported | Foundation |
|----------------|---------------------|-------------------------|------------|
| Roberts Chapel | 25.00 | | 20.00 |
| Rutledge | 905.20 | 59.74 | |
| Sunrise | 117.92 | 38.57 | 5.00 |
| Tampico | 20.00 | 25.00 | |
| Washburn | 62.03 | 75.96 | |

| | Cooperative Program | Designated and Reported | Foundation |
|---------------------------|---------------------|-------------------------|------------|
| HAMILTON | | | |
| Alton Park | 40.00 | 36.75 | |
| Antioch | | 25.00 | |
| Apison | 355.15 | 17.28 | |
| Avondale | 5,706.12 | 434.52 | 140.00 |
| Bartlebaugh | | 31.60 | |
| Birchwood | 249.32 | 8.54 | |
| Boulevard | 5.01 | | |
| Brainerd | 6,613.31 | 3,073.36 | 50.00 |
| Brainerd Hills | 683.88 | 72.44 | |
| Calvary | 1,962.57 | 150.92 | |
| Cedar Hill | 2,743.05 | 248.21 | 300.00 |
| Central | 3,241.60 | 1,716.14 | 1,065.09 |
| Chamberlain Avenue | 4,087.00 | 148.52 | 100.00 |
| Chattanooga, East | 2,014.23 | 452.06 | |
| Chattanooga, First | 18,000.00 | 13,408.83 | 6,467.91 |
| Chattanooga, Second | 2,771.30 | 373.65 | |
| Clifton Hill | 450.00 | 113.02 | |
| Concord | 2,533.61 | 298.95 | |
| Daisy | 275.94 | 72.13 | |
| Daisy South | 277.20 | 36.57 | |
| Dallas | 7.61 | 31.32 | |
| Daytona Heights | 176.71 | | |
| Delashmitt Road | 6.55 | 8.25 | |
| Eastdale | 1,530.00 | 469.97 | |
| East Lake | 3,564.52 | 661.23 | 840.00 |
| East Ridge | 2,124.13 | 88.42 | |
| East Twenty-Sixth Street | 16.00 | 16.75 | |
| Edgewood | 36.00 | 60.68 | 36.00 |
| Fairview | | 15.00 | |
| Falling Water | 36.00 | 28.50 | |
| Guild | 11.00 | 10.00 | |
| Harrison | | 28.00 | |
| Haynes Memorial Chapel | 86.32 | | |
| Highland Park | 2,400.00 | 2,171.57 | |
| Hixson | 1,134.69 | 54.75 | |
| Hughes Avenue | 6.00 | 26.20 | |
| Kings Point | 20.00 | 58.40 | |
| Kingwood | 100.00 | 91.52 | |
| Lookout Mountain | 1,315.53 | 587.98 | |
| Lookout Valley | 13.75 | 70.00 | |
| Lupton City | 132.00 | 103.60 | 60.00 |
| McCarty | 93.01 | 28.40 | |
| Maple Grove | 10.00 | 20.00 | |
| Memorial Chapel | 244.00 | | |
| Middle Valley | 262.14 | 41.25 | |
| Morris Hill | 390.00 | 125.44 | |
| Mountain View | | 18.00 | |
| New Bethel | 9.44 | | |
| New Liberty | 27.00 | | |
| New Mt. Carmel | | 15.00 | |
| N. Chattanooga Tabernacle | 41.15 | 50.00 | |
| Northside | 5,593.29 | 591.12 | 420.00 |
| Oak Grove | 2,371.26 | 350.26 | |
| Oak Street, Soddy | 496.94 | 94.15 | |
| Oakwood | 29.70 | 276.26 | 2.00 |
| Ooltewah | 808.00 | 234.90 | |
| Parkers Gap | 223.75 | 74.77 | |
| Philadelphia | 25.00 | 113.68 | |
| Pine Ridge | 3.60 | 33.00 | |
| Pleasant Grove | 12.39 | 15.86 | |
| Pleasant Hill | | 35.59 | |
| Providence | 52.00 | 14.44 | |
| Red Bank | | 462.20 | |
| Ridgedale | 12,215.87 | 2,461.72 | 2,150.08 |
| Ridgeview | 960.00 | 151.93 | |
| Rivercrest Chapel | 331.29 | 43.85 | |
| Shepherd | 87.00 | 68.86 | |

| | Cooperative Program | Designated and Reported | Foundation |
|--------------------|---------------------|-------------------------|------------|
| Signal Hill | 7.80 | 30.00 | |
| Signal Mountain | 239.04 | 93.43 | |
| Silverdale | 808.43 | 120.21 | |
| Soddy, South | | 12.31 | |
| South Street, Elmo | | 10.00 | |
| Spring Creek | 1,284.60 | 131.15 | 7.00 |
| St. Elmo | 6,493.80 | 630.09 | 193.00 |
| Suck Creek | 318.49 | 10.00 | |
| Temple | 11.48 | 38.16 | |
| Tyner | 184.00 | 102.87 | |
| Union Fork | | 2.50 | |
| White Oak | 2,598.88 | 309.68 | |
| Whiteside | | 121.25 | |
| Woodland Heights | 25.00 | 170.00 | 75.00 |
| Woodland Park | 6,078.42 | 785.54 | 912.00 |
| Association | 5.38 | 206.73 | 150.00 |

| | Cooperative Program | Designated and Reported | Foundation |
|-----------------|---------------------|-------------------------|------------|
| HARDEMAN | | | |
| Bethlehem | 56.77 | 8.75 | |
| Bolivar | 2,916.95 | 797.70 | 15.00 |
| Center Point | 12.00 | | |
| Ebenezer | 5.46 | 24.85 | |
| Grand Junction | 990.60 | 280.00 | 55.00 |
| Hatchie | 50.00 | 21.50 | |
| Hebron | | 11.77 | |
| Hickory Valley | 18.00 | 21.75 | |
| Hornsby | | 126.00 | |
| Middleburg | 52.92 | 64.52 | 3.00 |
| Middleton | 146.16 | 79.67 | |
| Midway | 36.50 | | |
| New Bethel | 16.32 | | |
| New Union | 26.88 | 52.29 | |
| Parrans | 36.11 | 95.00 | |
| Piney Grove | 32.55 | | |
| Pocahontas | 2.05 | 3.00 | |
| Saulsbury | 220.13 | 49.95 | 5.70 |
| Silerton | 90.81 | 11.25 | |
| Toone | 327.41 | 128.57 | |
| West Memorial | | 10.00 | |
| Whiteville | 838.55 | 176.96 | 8.00 |

| | Cooperative Program | Designated and Reported | Foundation |
|-----------------|---------------------|-------------------------|------------|
| HIWASSEE | | | |
| Concord | | 14.00 | |
| Eagle Furnace | 30.90 | 30.00 | |
| Hopewell | 40.67 | 47.00 | |
| Mt. Zion | | 10.00 | |
| Ozone | 30.00 | 32.00 | |
| Salem | | 3.66 | |
| Shiloh | 51.40 | | 10.00 |
| Ten Mile | 20.00 | 15.26 | |
| Association | | 6.00 | |

| | Cooperative Program | Designated and Reported | Foundation |
|-----------------------|---------------------|-------------------------|------------|
| HOLSTON | | | |
| Antioch | 498.70 | 81.65 | 5.00 |
| Asbury | 11.75 | 34.20 | |
| Baileyton | 106.50 | 66.59 | |
| Bethany | 33.12 | 146.16 | |
| Bethel | | 5.00 | |
| Beulah | 125.00 | 74.43 | |
| Bloomington | | 15.22 | |
| Blountville | 408.50 | 172.00 | 156.00 |
| Bluff City | 548.83 | 71.43 | |
| Bluff City, First | 609.25 | 102.76 | 214.00 |
| Boones Creek | | 43.50 | |
| Buffalo Ridge | 77.60 | 105.35 | |
| Calvary "B" | 2,752.46 | 246.37 | 208.00 |
| Calvary "E" | 1,038.85 | 459.72 | 140.00 |
| Calvary "G" | 2.00 | 10.00 | |
| Calvary "K" | 1,121.00 | 174.09 | 8.00 |
| Cedar Creek | | 3.50 | |
| Cedar Grove | 132.92 | 210.65 | |
| Central, Johnson City | 9,756.00 | 3,866.22 | 717.92 |
| Cherokee | 197.44 | 104.10 | |
| Cherry Grove | 5.00 | 21.00 | |
| Chinquepin | 940.25 | 33.00 | |
| Clear Branch | | 105.95 | |
| Clifton View | 14.00 | | |
| Coffee Ridge | | 45.00 | |

| | Cooperative Program | Designated and Reported | Foundation |
|------------------|---------------------|-------------------------|------------|
| Oakdale | 60.00 | 55.00 | |
| Oak Glen | 18.00 | 15.00 | |
| Oak Grove | 97.57 | 14.00 | 35.00 |
| Oak Hill | 110.24 | 178.24 | |
| Pine Crest | 714.07 | 80.36 | |
| Pleasant Grove | 38.35 | 42.76 | |
| Roan Hill | 15.98 | | |
| Shady Grove | | 20.00 | |
| Shallow Ford | 187.42 | 80.00 | |
| Snows Chapel | 62.85 | 119.29 | |
| Solomons | | 5.00 | |
| Southside | 157.40 | 32.95 | |
| State Line | 338.55 | 19.46 | |
| Sullivan | 1.50 | 74.00 | |
| Sulphur Springs | 483.20 | 107.98 | |
| Summersville | | 75.00 | |
| Sunnyside | | 46.61 | |
| Sunrise | | 30.00 | |
| Temple | 1,403.53 | 158.52 | 589.96 |
| Tennessee Avenue | 27.00 | 74.25 | |
| Unaka | 633.48 | 414.54 | |
| Unicoi | 3.00 | 16.42 | |
| Union | 113.00 | 36.90 | |
| Vernon Heights | | 2.00 | .50 |
| Virginia Avenue | 1,653.71 | 129.00 | |
| Walnut Grove | | 5.00 | |
| Woodlawn | 930.00 | 125.24 | |
| Association | | | 62.00 |

HOLSTON VALLEY

| | | | |
|--------------------|----------|----------|--------|
| Bethel | 10.00 | 10.55 | |
| Big Creek | | 2.00 | |
| Cane Creek | | 18.33 | |
| Choptack | | 173.58 | |
| Church Hill | | 67.00 | |
| Compromise | | 34.71 | |
| Fairview | | 15.36 | |
| Gills Chapel | 143.00 | 20.30 | |
| Henards Chapel | 160.00 | 55.57 | 10.00 |
| Hickory Grove | | 92.00 | |
| Howes | | 5.00 | |
| Independence | 6.00 | | |
| Looneys Chapel | 3.25 | 56.83 | |
| Lyons Park Mission | 8.65 | | |
| Maple Hill | 33.98 | 10.00 | |
| McPheeters Bend | 879.15 | 159.90 | 660.00 |
| Mooresburg | 10.00 | | |
| Morrisetts Chapel | 40.00 | | |
| New Salem | 30.00 | | |
| North Fork | 10.00 | | |
| Oak Grove | 6.00 | 65.00 | 10.00 |
| Persia | 38.12 | 42.36 | |
| Prices Grove | | 25.00 | |
| Providence | 3.00 | 20.00 | |
| Rogersville | 2,404.88 | 1,148.97 | 281.50 |
| Shady Grove | 50.00 | 19.00 | |
| Speedwell | 40.00 | 6.00 | |
| Surgoinsville | 330.00 | 302.00 | |
| Tunnell Hill | | 24.23 | |
| Walkers | | 50.21 | |
| Association | | 10.00 | |

INDIAN CREEK

| | | | |
|-------------------|--------|--------|-------|
| Bethel | 24.10 | 12.00 | |
| Bethlehem | | 25.32 | |
| Cedar Grove | | 4.23 | |
| Collinwood | 21.86 | 6.60 | |
| Flat Gap Mission | | | 5.00 |
| Green River | 58.66 | 67.00 | 12.15 |
| Hopewell | | 3.29 | |
| Kelleys Chapel | | | 2.76 |
| Leatherwood | 2.00 | 6.15 | 15.60 |
| Lutts | 79.02 | 42.60 | 11.00 |
| New Harmony | 5.00 | | |
| Oak Ridge Mission | 16.00 | 5.29 | 3.00 |
| Olive Hill | 2.50 | 7.92 | 7.87 |
| Philadelphia | 152.75 | 35.50 | 40.00 |
| Savannah | 219.19 | 57.08 | 10.39 |
| Turkey Creek | 37.70 | 31.25 | |
| Waynesboro | 412.50 | 349.57 | 33.25 |
| Zion | 82.75 | | |
| Association | | | 15.55 |

JEFFERSON

| | | | |
|-----------------------|-----------|----------|--------|
| Beaver Creek | 66.54 | | |
| Buffalo Grove | 240.73 | 102.78 | |
| Dandridge | 376.52 | 229.50 | 128.95 |
| Deep Springs | 5.32 | 13.00 | |
| Dumplin | 726.11 | 89.20 | |
| Flat Gap | 146.15 | 57.31 | 35.00 |
| French Broad | 100.00 | | 5.00 |
| Good Hope | 26.00 | | |
| Jefferson City, First | 10,851.54 | 2,013.86 | 626.67 |
| Mill Spring | 685.14 | 12.20 | |
| Mountain View | 43.97 | 42.74 | |
| Nances Grove | 238.29 | 188.73 | |
| New Market | 725.49 | 48.07 | |
| Northside | 225.00 | 86.77 | |
| Piedmont | 703.56 | 33.32 | 5.00 |
| Pleasant Grove "H" | 82.00 | | |
| Pleasant Grove "P" | 82.68 | 127.30 | |
| Rocky Valley | 57.53 | 25.00 | |
| Talbott | 111.06 | 104.00 | |
| White Pine | 1,067.84 | 143.34 | 20.00 |
| Association | | 45.00 | 3.00 |

JUDSON

| | | | |
|-------------|-------|-------|--------|
| Bell | 4.33 | | |
| Charlotte | 78.45 | | |
| Fairview | | 21.00 | |
| Gum Springs | 90.00 | 80.00 | 100.00 |
| Harmony | 10.00 | | |
| Mt. Zion | | 10.00 | |
| New Hope | 5.00 | 18.00 | |

| | Cooperative Program | Designated and Reported | Foundation |
|------------------------|---------------------|-------------------------|------------|
| Parkers Creek | | 4.36 | |
| Pleasant Ridge | 5.00 | | |
| Association | 7.12 | | |
| KNOX | | | |
| Alice Bell | 513.39 | 75.51 | |
| Arlington | 8,054.57 | 1,648.78 | 1,620.00 |
| Ball Camp | 242.00 | 32.24 | 155.00 |
| Beaumont Avenue | 573.39 | 45.02 | |
| Beaver Dam | 958.54 | 60.23 | 141.86 |
| Bell Avenue | 9,750.19 | 552.39 | 602.50 |
| Belmont Heights | 419.58 | 136.22 | 13.45 |
| Black Oak | 410.63 | 159.93 | 147.72 |
| Bon View | 9.00 | 24.88 | |
| Broadway | 15,000.00 | 1,133.15 | 3,603.58 |
| Calvary | 1,286.20 | 138.74 | |
| Central, Bearden | 680.00 | 271.63 | 12.00 |
| Central, Fountain City | 13,754.23 | 1,595.11 | 1,591.00 |
| Central View | | 7.25 | |
| Churchwell Avenue | 948.21 | 56.92 | |
| City View | 1,966.14 | 144.22 | 322.00 |
| Clear Springs | 82.95 | 97.32 | 5.00 |
| Corryton | 916.23 | 264.89 | |
| Crichton | 366.71 | 94.50 | |
| Deaderick Avenue | 1,727.50 | 301.79 | |
| Ebenezer | 11.48 | 50.00 | |
| Elm Street | 166.33 | 52.89 | |
| Euclid Avenue | 1,996.83 | 292.17 | 3.00 |

Harrison-Chilhowee Enlargement Campaign

September 16

State-wide Kick-Off Day

| | | | |
|----------------------|-----------|-----------|----------|
| Fair Havens | 134.00 | | |
| Fairview | 529.40 | 87.09 | |
| Fifth Avenue | 15,319.84 | 5,458.69 | 2,793.68 |
| Fort Sanders | 1,015.28 | 96.15 | |
| Fountain City, First | 2,031.15 | 204.33 | 437.50 |
| Gallahers | 50.00 | 6.17 | |
| Gayland Heights | 150.00 | 45.00 | |
| Gillespie Avenue | 700.09 | 275.85 | 325.85 |
| Glenwood | 586.43 | 184.75 | |
| Grace | 184.75 | 85.89 | |
| Grassy Valley | 15.00 | 11.00 | |
| Greenway | 20.00 | | |
| Grove City | 578.91 | 30.00 | 63.00 |
| Grove Hill | | 7.00 | |
| Highland | 628.01 | 252.22 | |
| Holston | | 67.00 | |
| House Mountain | | 58.62 | |
| Immanuel | 857.81 | 157.70 | 25.00 |
| Inskip | 2,992.71 | 298.96 | |
| Island Home | 2,768.87 | 847.33 | 275.00 |
| John Sevier | 126.44 | 48.66 | 19.82 |
| Knoxville, First | 42,902.28 | 10,593.16 | 3,161.05 |
| Lincoln Park | 7,077.79 | 738.36 | 1,237.00 |
| Linden Avenue | | 6.00 | |
| Little Flat Creek | 300.00 | 32.00 | |
| Lonsdale | 2,175.17 | 326.07 | 491.00 |
| Loveland | | 49.60 | |
| Lyons Creek | 364.00 | 75.28 | |
| Marble City | 105.00 | 31.00 | |
| Marbledale | 75.00 | 31.25 | |
| Mars Hill | | 64.77 | 32.50 |
| Mascot | 504.91 | 270.12 | 10.00 |
| McCalla Avenue | 3,419.44 | 238.31 | 5.00 |
| Meridian | 332.29 | 160.16 | 80.00 |
| Middlebrook Heights | | 8.32 | |
| Middlebrook Pike | | 9.52 | |
| Mooreland | 11.50 | | |
| Morgan | | 5.20 | |
| Mt. Carmel | 13.50 | 28.13 | |
| Mt. Harmony | 101.10 | 314.67 | 50.00 |
| Mt. Olive | 1,631.00 | 585.40 | 225.00 |
| Mountain View | 475.58 | 39.50 | |
| New Hopewell | 784.02 | 188.98 | |
| North Hills | 90.00 | | |
| North Knoxville | | 92.48 | |
| Northside | | 52.22 | |
| Oakwood | 4,461.71 | 184.34 | 43.00 |
| Oglewood | 60.00 | | |
| Park City | | 19.25 | |
| Park Lane | 270.00 | 47.45 | 16.00 |
| Piney Grove | 300.00 | | |
| Powell | 595.76 | 191.38 | 150.03 |
| Ridgedale | 124.97 | 76.83 | |
| Ridgeview | 19.00 | 19.40 | |

| | Cooperative Program | Designated and Reported | Foundation |
|----------------------------|---------------------|-------------------------|------------|
| Riverdale | 1,116.16 | 215.60 | |
| Riverview | 126.27 | 53.05 | |
| Rocky Hill | 65.15 | 55.68 | |
| Roseberry | 316.90 | 108.65 | |
| Salem | 809.16 | 100.65 | 100.00 |
| Seven Islands | | 7.65 | |
| Sevier Heights | 2,220.00 | 708.58 | 250.00 |
| Sharon | 200.00 | 46.35 | |
| Skyline Drive | 510.45 | 119.15 | |
| Smith Grove | 17.00 | | |
| Smithwood | 4,270.90 | 404.50 | 867.77 |
| South Knoxville | 5,705.68 | 790.70 | 580.00 |
| Stony Point | 31.99 | | |
| Straw Plains | 678.74 | 38.30 | 5.00 |
| Sunny View | 75.96 | | |
| Tarklin Valley | | 10.00 | |
| Tennessee Avenue | 949.22 | 127.81 | |
| Third Creek | 149.23 | 202.29 | |
| Thorn Grove | 62.55 | 37.00 | |
| Timothy Street Mission | 6.83 | | |
| Union | 21.51 | 119.00 | |
| Unity | 153.53 | 44.75 | |
| Valley Grove | 40.77 | 111.31 | 180.80 |
| Valley Grove, Chapman Hwy. | 698.31 | 215.41 | 79.00 |
| Washington Avenue | 284.07 | 14.95 | |
| Washington Pike | 2,334.86 | 145.55 | 179.00 |
| West End | 126.06 | 81.56 | |
| Association | 128.51 | 466.07 | 126.25 |

LAWRENCE

| | | | |
|----------------|----------|--------|--------|
| Blooming Grove | 1.50 | 30.53 | |
| Bonnertown | 149.39 | 40.00 | 50.00 |
| Deerfield | 27.21 | 18.30 | 10.00 |
| Ethridge | 8.00 | 15.53 | |
| Five Points | 56.86 | | 13.75 |
| Gum Springs | 20.00 | 35.00 | |
| Iron City | 72.74 | 178.93 | |
| Lawrenceburg | 1,850.00 | 112.95 | 161.26 |
| Leoma | 49.40 | 34.10 | 27.25 |
| Liberty Grove | 42.23 | | |
| Loretto | 14.72 | 47.42 | |
| Mars Hill | 3.00 | 7.00 | |
| Mt. Horeb | 27.63 | 63.31 | 113.06 |
| Oak Hill | 1.70 | | |
| O K | | 22.50 | |
| Park Grove | 6.50 | 31.21 | |
| Ramah | | 15.00 | 34.97 |
| Summertown | 8.28 | 46.58 | 34.50 |

McMINN

| | | | |
|--------------------|-----------|----------|----------|
| Athens, First | 15,326.45 | 1,134.13 | 3,397.00 |
| Bethsadia | | 13.39 | |
| Calhoun | 52.75 | 28.00 | |
| Calvary Missionary | 32.98 | | 20.36 |
| Calvary (McMahan) | 181.67 | 10.75 | |
| Clear Springs | | 10.00 | |
| Clear Water | | 119.58 | 40.00 |
| Cog Hill | 163.73 | 32.39 | 30.00 |
| Cottonport | 4.04 | | |
| Double Springs | 5.25 | 10.00 | |
| Eastanallee | | 46.59 | 38.00 |
| East Athens | 1,129.33 | 129.60 | 1.20 |
| East Etowah | 4.30 | 21.92 | 40.00 |
| East Niota | 17.79 | 28.75 | |
| Englewood | 1,413.91 | 156.58 | 330.00 |
| Etowah, First | 3,221.49 | 763.46 | 304.00 |
| Goodfield | 347.58 | 110.54 | |
| Good Springs | 6.64 | 25.55 | |
| Lakeview | | 25.00 | |
| Lamontville | | 8.50 | |
| Mt. Harmony No. 2 | 3.87 | 13.00 | 13.00 |
| Mt. Pisgah | | 15.56 | |
| New Bethel | | 8.22 | |
| New Zion | | 25.00 | |
| Niota, First | 951.73 | 348.55 | 25.00 |
| North Athens | 628.17 | 82.12 | 144.04 |
| North Etowah | 576.85 | 101.82 | 85.00 |
| Riceville | 66.66 | 104.79 | |
| Shiloh | | 7.20 | |
| South Liberty | | 13.71 | |
| Union Grove No. 1 | | 12.22 | 51.70 |
| Union Grove No. 2 | 78.00 | | |
| Union McMinn | | | 7.66 |
| Walnut Grove | | 2.25 | |
| West View | 45.00 | 107.25 | 113.00 |
| Wildwood | 50.00 | 74.20 | 25.00 |
| Zion Hill | | 50.00 | |

McNAIRY

| | | | |
|----------------|--------|-------|--------|
| Adamsville | 15.00 | 56.58 | |
| Bethel | 57.15 | 30.75 | |
| Bethel Springs | 70.75 | 20.50 | |
| Chewalla | 210.00 | 53.68 | 105.00 |
| Clear Creek | 153.54 | 15.33 | |
| Good Hope | 6.25 | 10.00 | |
| Gravel Hill | 350.55 | 83.63 | 116.70 |
| Hopewell | | 26.25 | |
| Lorraine | 30.00 | | |

EAST TEXAS BAPTIST COLLEGE

"A Liberal Arts College"

MARSHALL, TEXAS

Accredited—Orthodox—Spiritual—Business—Teacher Training—Music—Pre-professional
Reasonable Rates, Regular Session September 10, 1951, Application Should Be Made Immediately
For Information and Literature Contact: H. D. Bruce, President

| | Cooperative Program | Designated and Reported | Foundation |
|---------------|---------------------|-------------------------|------------|
| Pleasant Site | 1.00 | 6.07 | |
| Ramer | 70.11 | 12.86 | |
| Selmer | 723.05 | 221.29 | 50.00 |
| West Shiloh | 83.35 | | |

MADISON-CHESTER

| | | | |
|-----------------------|----------|----------|----------|
| Ararat | 329.44 | 47.02 | |
| Beech Bluff | 10.50 | 26.46 | 1.00 |
| Beech Grove | 9.90 | 44.36 | |
| Bemis | 3,196.40 | 927.95 | |
| Bethel | | 50.00 | |
| Clover Creek | 371.35 | 54.68 | |
| Cotton Grove | 35.50 | 39.50 | |
| East Laurel | 239.79 | 62.55 | |
| Englewood | 219.70 | 20.75 | |
| Enville | 5.00 | 20.00 | |
| Friendship | | 5.00 | |
| Henderson | 589.54 | 91.90 | |
| Hill Crest Circle | 229.26 | 18.11 | |
| Jackson, Calvary | 4,000.67 | 946.59 | 392.51 |
| Jackson, First | 9,298.26 | 3,356.06 | 6,542.88 |
| Jackson, North | 1,012.85 | 68.42 | |
| Jackson, Royal Street | 414.27 | 131.35 | 6.00 |
| Jackson, West | 6,428.00 | 2,594.77 | 739.03 |
| Liberty Grove | 396.15 | 26.00 | |
| Madison | 69.44 | 62.88 | 4.75 |
| Malesus | 761.55 | 153.13 | |
| Maple Springs | 278.60 | 194.91 | |
| Mercer | 383.22 | 68.77 | |
| Mitchells Chapel | 2.00 | 9.70 | |
| Oakfield | 144.42 | 36.17 | |
| Palestine | 1.50 | | |
| Parkburg | 143.11 | 66.69 | 7.95 |
| Parkview | 2,218.09 | 232.26 | 12.50 |
| Pinson | 110.00 | 14.00 | |
| Pinson Mission | 15.09 | | |
| Pleasant Hill | 103.83 | | |
| Pleasant Plains | 300.00 | 21.61 | 6.83 |
| Poplar Corner | 7.52 | 80.75 | |
| Poplar Heights | 1,401.12 | 106.30 | |
| Spring Creek | 35.00 | 68.00 | |
| Unity | | 34.00 | |
| Wards Grove | 246.44 | 85.52 | |
| Westover | 444.53 | 360.13 | |
| Association | | 81.84 | |

MAURY

| | | | |
|------------------|----------|--------|--------|
| Allensville | 35.00 | 10.50 | |
| Calvary | | 8.50 | |
| Centerville | 869.42 | 209.09 | 158.98 |
| Columbia, First | 2,407.19 | 559.39 | 679.65 |
| Columbia, Second | 498.31 | 278.43 | 292.50 |
| Cross Roads | 75.00 | 20.00 | 11.00 |
| Friendship | 59.33 | 80.32 | 79.69 |
| Hohenwald | 249.04 | 60.29 | 44.00 |
| Knob Creek | 130.84 | 29.95 | |
| Lawrence Grove | 20.00 | | 10.00 |
| Linden | 51.50 | 45.72 | 18.55 |
| Mt. Pleasant | 665.77 | 516.64 | 389.56 |
| Rock Springs | 117.32 | 22.43 | 39.58 |
| Santa Fe | 47.00 | 24.86 | 74.80 |
| Theta | 2.00 | 17.35 | |
| Viola | 48.00 | | |
| Wrigley | 89.66 | | 38.71 |
| Association | | | 25.00 |

MIDLAND

| | | | |
|-------------------|--------|-------|-------|
| Atkin | | 15.42 | |
| Bells Camp Ground | 133.19 | 98.09 | |
| Bishopville | | 17.00 | |
| Calvary | 261.00 | 30.00 | |
| Cedar Grove | | 16.03 | |
| Clear Springs | 25.00 | | |
| Graveston | 173.39 | 75.00 | |
| Mt. Harmony | | 43.00 | |
| New Hope | | 50.00 | 50.00 |
| Pleasant Hill | 35.00 | 16.75 | |
| Solway | 31.26 | 22.30 | |
| Union | 160.06 | 18.00 | |
| Zion Hill | | 19.21 | |

MULBERRY GAP

| | | | |
|----------------|-------|--------|--|
| Big Hill | 3.00 | | |
| Chinquepin | | 7.17 | |
| Clinch River | | 5.00 | |
| Duck Creek | 39.75 | 66.40 | |
| Grassy Springs | | 15.00 | |
| Huberts Chapel | 15.00 | 1.00 | |
| Kyles Ford | 59.07 | 56.05 | |
| Liberty | | 52.44 | |
| Mulberry Gap | | 29.00 | |
| New Life | 14.00 | 12.00 | |
| Pleasant Hill | | 9.51 | |
| Sneedville | 57.18 | 64.57 | |
| Trent Valley | 20.00 | 139.73 | |
| Valley View | | 12.00 | |

NASHVILLE

| | | | |
|------------------|-----------|----------|----------|
| Antloch | 158.90 | 134.91 | 46.00 |
| Ashland City | | | 50.00 |
| Bakers Grove | 339.29 | 64.81 | |
| Belmont Heights | 23,340.63 | 5,343.89 | 3,691.08 |
| Berry Field | 227.25 | 29.69 | 15.00 |
| Berryville | 75.00 | 12.00 | 23.00 |
| Bordeaux | 98.00 | 90.70 | 12.75 |
| Calvary | 1,608.03 | 89.20 | 135.50 |
| Centennial | 11.70 | 54.68 | 58.00 |
| Central | 26.00 | 14.40 | |
| Chapel | 73.71 | 10.00 | |
| Dickson | 409.25 | 118.52 | 20.00 |
| Donelson | 3,612.68 | 519.77 | 120.00 |
| Due West Mission | 12.16 | | |
| Eastland | 7,847.09 | 988.75 | 466.00 |
| Edgefield | 3,139.69 | 946.93 | 777.00 |

| | Cooperative Program | Designated and Reported | Foundation |
|------------------|---------------------|-------------------------|------------|
| Ewing | | 20.97 | |
| Franklin | 1,796.02 | 934.77 | 148.18 |
| Freeland | 279.48 | 27.23 | 50.00 |
| Glendale | 486.35 | 32.00 | |
| Goodlettsville | 3,146.15 | 93.21 | 587.12 |
| Grace | 10,020.61 | 462.27 | 2,975.20 |
| Grandview | 2,043.69 | 260.87 | 376.61 |
| Green Hill | 126.33 | 150.99 | 188.00 |
| Grubbs Memorial | 705.41 | 65.20 | |
| Harpeth Heights | 375.00 | 76.81 | 25.00 |
| Harsh Chapel | 844.71 | 224.21 | 200.00 |
| Hendersonville | 25.00 | 75.00 | 653.00 |
| Hermitage | 131.54 | 110.34 | 105.00 |
| Immanuel | 5,486.30 | 1,662.50 | 616.20 |
| Inglewood | 6,562.50 | 1,561.39 | 405.00 |
| Ivy Chapel | 145.00 | 125.55 | |
| Joelton | 206.00 | 32.50 | |
| Judson | 11,117.69 | 1,195.38 | 2,506.65 |
| Lockeland | 8,281.93 | 675.55 | 421.90 |
| Madison | 3,955.78 | 234.82 | 665.16 |
| Madison Heights | | 11.00 | |
| Mill Creek | | 199.76 | |
| Nashville, First | 36,054.04 | 6,250.29 | 1,573.38 |
| New Hope | 462.50 | 11.00 | |
| North Edgefield | 152.50 | 72.00 | |
| North End | 237.25 | 153.51 | 128.00 |
| Old Hickory | 6,648.53 | 346.17 | 860.50 |
| Park Avenue | 5,582.69 | 588.83 | 430.87 |
| Radnor | 999.17 | 235.62 | 512.31 |
| Richland | 112.78 | 68.15 | |

Harrison-Chilhowee Enlargement Campaign

September 16

State-wide Kick-Off Day

| | | | |
|-------------------------------------|-----------|--------|----------|
| River Road | 42.69 | | |
| Riverside | 794.87 | 263.09 | 27.00 |
| Rosedale | 50.00 | 31.10 | 9.00 |
| Saturn Drive | 47.71 | 65.75 | |
| Seventh | 941.65 | 180.88 | 34.00 |
| Shelby Avenue | 1,885.59 | 171.88 | 210.00 |
| Smith Springs | | 30.00 | 112.30 |
| Spring Hill | 50.24 | | |
| Temple | 574.77 | 142.10 | 79.00 |
| Tennessee Home | 1,197.47 | 387.50 | |
| Third | 1,414.46 | 302.04 | 584.66 |
| Una | 27.55 | 180.44 | 61.00 |
| Union Hill | 1,455.57 | 104.34 | 65.00 |
| West Nashville | 147.83 | 21.38 | |
| Westwood | 75.00 | 304.64 | |
| Woodbine | 102.30 | 180.16 | 5.00 |
| Woodmont | 14,355.48 | 423.83 | 1,445.00 |
| Woodmont Center Mission Association | 7.95 | 108.49 | 20.00 |

NEW DUCK RIVER

| | | | |
|---------------------|----------|--------|----------|
| Bell Buckle | 78.13 | 32.45 | 14.40 |
| Big Springs Mission | 131.44 | 12.80 | |
| Charlty | 4.00 | | 26.02 |
| Cornersville | 192.82 | 210.83 | 27.00 |
| El Bethel | 330.58 | 196.12 | 14.75 |
| Fosterville | | 39.85 | 30.21 |
| Hannahs Gap | 115.25 | 28.30 | 40.00 |
| Holts Corner | 86.77 | 108.52 | 86.75 |
| Hurricane | 9.75 | 15.00 | |
| Lewisburg | 4,420.44 | 489.85 | 1,362.50 |
| Mt. Lebanon | 47.10 | 42.40 | |
| New Bethel | 172.21 | 16.26 | 2.00 |
| New Hope | 55.00 | 57.75 | 13.43 |
| North Fork | 70.84 | 57.48 | 16.00 |
| Rover | 177.24 | 48.50 | |
| Shelbyville | 2,215.69 | 221.01 | 405.00 |
| Shelbyville Mills | 285.00 | 34.93 | 22.00 |
| Smyrna | 117.49 | 49.22 | 2.00 |
| Wartrace | 307.56 | 163.40 | 40.21 |

NEW RIVER

| | | | |
|-------------------------|--------|--------|--|
| Antloch | | 11.00 | |
| Bethlehem | 12.50 | | |
| Black Creek Cross Roads | 1.60 | | |
| Fairview | 4.35 | 19.00 | |
| Glenmary | 6.50 | | |
| Huntsville | 256.29 | 75.64 | |
| Lone Mountain | | 20.00 | |
| Low Gap | 79.96 | | |
| Mill Branch | 1.28 | 15.00 | |
| Mountain View | 1.00 | 8.61 | |
| New Prospect | 1.44 | | |
| New River | 37.61 | | |
| Norma | 1.92 | | |
| Onelda | 803.92 | 156.20 | |
| Robbins | 230.50 | 11.70 | |
| Straight Fork | 1.00 | | |
| Vine Street | 19.00 | 82.00 | |
| Winfield | 3.86 | | |
| Association | 1.85 | | |

NEW SALEM

| | | | |
|----------------------|--------|--------|--------|
| Brush Creek | 296.23 | 141.55 | 14.00 |
| Buena Vista | | 67.00 | 29.34 |
| Carthage | 679.80 | 368.54 | 140.53 |
| Gordonsville Mission | 5.37 | | |
| Hickman | 119.87 | 50.65 | 81.75 |
| Nash Grove | 33.45 | 5.00 | 60.00 |
| New Home | 108.75 | 46.79 | 47.50 |

| | Cooperative Program | Designated and Reported | Foundation |
|----------------|---------------------|-------------------------|------------|
| New Middleton | 584.64 | 218.22 | 57.50 |
| Peyton Creek | 130.96 | 118.77 | 133.69 |
| Plunketts | | 126.94 | |
| Riddleton | 37.50 | 26.51 | 19.00 |
| Rome | 71.54 | 64.27 | 118.31 |
| South Carthage | | 9.10 | |

NOLICHUCKY

| | | | |
|---------------------|----------|----------|--------|
| Alpha | 108.75 | 52.00 | |
| Bethel | 275.92 | 69.36 | 100.00 |
| Beulah | 134.90 | 104.80 | |
| Bibles Chapel | 67.27 | 30.15 | |
| Big Springs Mission | | 20.00 | |
| Brier Thicket | 34.03 | 10.00 | |
| Brown Springs | 225.00 | 95.44 | 95.00 |
| Bulls Gap | 761.70 | 236.30 | |
| Calvary | | 720.00 | 7.33 |
| Catherine Nenny | 60.03 | 22.12 | |
| Cedar Creek | 40.00 | 33.65 | |
| Central | | 65.25 | |
| Concord | 240.09 | 72.67 | 22.00 |
| Enterprise | | 33.46 | |
| Fairfield | | 12.10 | |
| Fairview | 364.88 | 119.09 | |
| Fernwood | 12.00 | 7.05 | |
| Grace | 369.39 | 93.18 | |
| Kidwells Ridge | 40.57 | 27.00 | |
| Leadvale | 7.71 | 52.80 | |
| Lebanon | 145.98 | 11.66 | |
| Macedonia | | 27.00 | |
| Montvue | 109.00 | 90.89 | |
| Morristown, First | 9,000.00 | 1,579.67 | |
| Mountain Valley | | 10.30 | |
| Mt. Zion | 81.23 | 121.00 | 45.00 |
| Phillippi | 2.00 | | |
| Pleasant View | 25.00 | 34.93 | |
| Robertsons | 12.15 | 10.00 | |
| Rocky Point | 167.79 | 162.70 | 30.00 |
| Roe Junction | | 10.00 | |
| Russellville | 182.76 | 319.79 | 20.00 |
| Statum Gap | 14.77 | | |
| Thankful | | 49.37 | |
| Three Springs | | 20.00 | |
| Warrensburg | 232.75 | 68.50 | |
| White Oak Grove | 95.70 | 68.96 | |
| Whitesburg | 130.35 | 210.85 | 100.00 |
| Witts | 295.43 | 225.50 | 41.00 |
| Association | | 39.50 | |

NORTHERN

| | | | |
|---------------|--------|--------|------|
| Cedar Ford | 131.25 | 341.00 | 4.50 |
| Clear Branch | 142.00 | 79.40 | |
| Lone Mountain | 21.00 | 10.00 | |
| Maynardville | 12.89 | 63.00 | |
| New Salem | 2.69 | | |
| War | | | |

| | Cooperative Program | Designated and Reported | Foundation | | Cooperative Program | Designated and Reported | Foundation | | Cooperative Program | Designated and Reported | Foundation |
|-----------------------------|---------------------|-------------------------|------------|------------------------------|---------------------|-------------------------|------------|--------------------------------------|---------------------|-------------------------|------------|
| | | | | SHELBY | | | | | | | |
| Clarkrange | 24.00 | 20.00 | | Airview | 130.06 | | | Smith Chapel | 1.42 | | |
| Columbia Hill | 10.00 | | | Ardmore | 1,496.52 | 307.80 | | Steven Street | 43.43 | 65.30 | 36.00 |
| Etter | 50.00 | | | Arlington | 121.50 | 43.50 | 35.00 | Thorn Hill | 2.14 | | |
| Falling Springs | 3.50 | | | Bartlett | 1,158.82 | 184.63 | | Westview | 365.20 | 59.45 | |
| Fellowship | 1.73 | | | Barton Heights | 65.00 | 216.67 | | Willhite | 15.15 | | |
| Fredonia | | 35.00 | | Bellevue | 63,061.82 | 9,202.85 | 6,724.08 | Woodcliff Association | 3.00 | 5.39 | 12.00 |
| Isolene | 35.00 | | | Berclair | 2,371.66 | 191.84 | 215.01 | | 3.00 | 35.00 | 18.50 |
| Jamestown | 1,001.77 | 104.40 | 74.50 | Beverly Hills | 217.62 | 76.00 | | SWEETWATER | | | |
| Livingston | 18.23 | | | Big Creek | 50.00 | 35.15 | | Beaty's Chapel | | 5.00 | |
| Mayland | 41.00 | 20.00 | | Boulevard | 11,700.87 | 698.60 | 1,000.31 | Blairland | 80.95 | 32.45 | |
| Moodyville | 15.00 | | | Breedlove | 171.01 | 65.75 | | Chestua | 197.29 | 83.85 | |
| Mt. Union | 4.48 | 16.00 | 5.00 | Brunswick | 90.00 | 187.52 | | Christianburg | 108.15 | 19.50 | |
| Plateau | 14.27 | | | Buntyn | 513.43 | 1,292.52 | 10.85 | Citico | | 10.00 | |
| Three Forks | 13.27 | | | Calvary | 3,832.36 | 726.16 | 480.97 | Corinth | 18.62 | 56.00 | |
| Vine Ridge Association | 20.00 | 5.45 | | Capleville | 419.80 | 32.25 | | Fairview | | 2.75 | |
| ROBERTSON | | | | Central Avenue | 5,850.00 | 603.57 | 821.00 | Fairview Tabernacle | 45.00 | 104.50 | |
| Barren Plains | 352.77 | 165.93 | 348.51 | Collierville | 2,355.22 | 359.58 | | Friendship | | 54.72 | |
| Battle Creek | 50.00 | | | Cordova | 1,047.58 | 306.11 | 60.00 | Glenlock | 3.93 | | |
| Bethel | 425.96 | 100.34 | | Eads | 17.31 | 91.27 | | Holly Springs | | 2.16 | |
| Bethlehem | 29.47 | 34.60 | | Egypt | 108.00 | 94.76 | | Loudon | 993.18 | 131.87 | 150.00 |
| Cedar Hill | 263.75 | 73.85 | 15.00 | Elliston Avenue | 257.62 | 102.55 | | Macedonia | 16.00 | 4.00 | |
| Center Point | 5.91 | 27.72 | 18.00 | Eudora | 328.39 | 436.00 | 50.00 | Madisonville | 1,051.42 | 500.09 | 200.00 |
| Duers Mill Mission | 7.75 | | | First Baptist Chapel | 25.31 | | | New Bethany | | 35.00 | |
| Ebenezer | 66.00 | 85.37 | 50.00 | Fisherville | 47.00 | 214.88 | | New Macedonia | | 24.73 | |
| Flewellyn | 5.25 | 16.27 | | Flynn Avenue | 41.75 | 12.35 | | New Providence | | 50.00 | |
| Grace | 425.27 | 106.56 | 50.00 | Forrest Hill | 316.44 | 113.41 | | North Sweetwater | 20.00 | 36.01 | |
| Greenbrier | 1,915.03 | 180.60 | 550.80 | Germantown | 631.47 | 208.07 | 23.34 | Notchey Creek | 45.00 | 27.50 | |
| Hopewell | 1,374.77 | 384.25 | 152.31 | Glenview | 54.99 | 2.50 | | Oakland | 117.12 | 16.50 | |
| Mt. Carmel | 1,637.01 | 51.05 | 79.92 | Highland Heights | 8,600.00 | 867.73 | 1,815.00 | Old Sweetwater | | 10.00 | |
| North Springfield | 495.66 | 71.61 | 26.25 | Hollywood | 1,051.83 | 355.08 | | Philadelphia | 215.05 | 420.08 | 5.00 |
| Oak Grove | 1,051.08 | 219.19 | 110.67 | Kennedy Memorial | 1,462.29 | 190.93 | | Prospect | 170.09 | 67.00 | 9.00 |
| Oakland | 16.86 | 32.30 | 10.00 | La Belle | 12,592.96 | 560.57 | 747.00 | Reed Springs | | 36.00 | |
| Orlinda | 1,315.82 | 395.47 | 922.82 | Lamar Heights | 3,092.13 | 555.37 | 450.00 | Sweetwater | 1,600.00 | 962.08 | 167.70 |
| Pleasant Hill | | 66.51 | 165.03 | Leawood | 1,507.96 | 65.63 | | Tellico | 12.00 | | |
| Pleasant Valley | 38.89 | 43.15 | | Levi | 360.73 | 85.64 | 175.00 | Tellico Plains | 20.00 | 30.00 | |
| Red River | 196.65 | 123.03 | 80.28 | Longview Heights | 1,626.58 | 113.73 | 9.00 | Vonore | 87.38 | 45.14 | |
| Rock Springs | 7.36 | 19.68 | 92.61 | Louisiana Street | 1,218.28 | 117.87 | | Watsons Association | 71.01 | 35.55 | |
| Springfield | 5,296.02 | 814.23 | 687.25 | Lucy | 110.00 | 22.83 | | TENNESSEE VALLEY | | | |
| White House | 140.50 | 54.37 | | McLean Boulevard | 3,099.79 | 1,280.15 | 2.00 | Bethel | 71.61 | 52.01 | |
| Williams Chapel Association | 30.00 | 11.05 | 87.50 | McLean Chapel | 456.46 | 94.38 | | Bogles Chapel | 2.14 | 5.50 | |
| SALEM | | | | Malcomb Avenue | 2,474.99 | 59.47 | | Bogles Chapel | 2.14 | 5.50 | |
| Auburn | 450.00 | 230.27 | 46.00 | Mallory Heights | 2,125.00 | 81.34 | | Clear Creek | 115.83 | 37.02 | |
| Barren Fork | | 29.50 | | Memphis, First | 29,366.74 | 4,066.95 | | Concord | | 17.10 | |
| Burt | 73.24 | 17.63 | 100.05 | Merton Avenue | 3,186.23 | 459.73 | 378.15 | Coulterville | 3.50 | 1.10 | |
| Cave Springs | 21.83 | 57.91 | 21.00 | Millington | 1,271.26 | 188.23 | | Dayton | 1,096.00 | 291.56 | 389.75 |
| Coopers | | 6.58 | | Mt. Pisgah | 291.10 | 16.45 | | Evensville | 38.15 | 14.07 | |
| Dowelltown | 64.12 | 19.08 | | National Avenue | 408.00 | 42.35 | | Garrison | | 76.21 | |
| Dry Creek | 20.00 | 11.00 | | Oak Lawn | 211.64 | 70.90 | | Grandview | 23.58 | 25.50 | |
| Gath | 275.84 | 16.12 | 81.22 | Oakville Memorial Mission | 65.82 | 105.36 | 50.04 | Graysville | 46.70 | 42.99 | |
| Madison Street | 225.00 | 32.88 | 4.57 | Park Avenue | 167.12 | 181.01 | 2.00 | Kelley Grove | 4.59 | | |
| Mt. Herman | | | 9.44 | Parkway | 450.00 | | 3.00 | Lake Drive | 38.37 | 6.00 | |
| Mt. Zion | 68.38 | 14.50 | | Poplar Avenue | 1,075.00 | 71.69 | | Mt. Vernon | 133.90 | 93.10 | |
| New Home | | 18.00 | | Prescott Memorial | 11,166.36 | 1,393.67 | 1,539.82 | New Union | 244.14 | 62.68 | |
| New Hope | | 44.50 | 15.00 | Raleigh | 1,914.06 | 179.87 | 360.00 | Ogden | 38.00 | 66.57 | 6.26 |
| Salem | 440.00 | 439.10 | 272.00 | Riverside | 1,038.00 | 144.62 | | Pennine | 53.09 | 25.00 | |
| Smithville | 300.00 | 95.44 | 63.00 | Rugby Hills | 64.07 | 4.40 | | Sale Creek | | 25.00 | |
| Snow Hill | 14.00 | | | Sanga Mission | | 22.39 | | Salem | 196.77 | 55.00 | |
| Sycamore | | 52.39 | | Seventh Street | 4,776.22 | 516.06 | 93.40 | Smyrna | 95.59 | 30.15 | |
| Whartons Springs | | 18.40 | 22.32 | Shirley Park Chapel | 200.42 | 72.47 | | Spring City | 449.07 | 480.65 | 200.00 |
| Wolf Creek | | 8.00 | | Southland | 418.14 | 66.81 | | St. Clair | | 39.05 | |
| Woodbury | 554.20 | 234.95 | 860.44 | Speedway Terrace | 4,350.00 | 3,027.62 | 725.00 | Tennessee Valley | 378.64 | 109.40 | |
| SEQUATCHIE VALLEY | | | | Sylvan Heights | 492.28 | 126.43 | | Thurmans Chapel | 2.06 | | |
| Baptist Hill | | 4.82 | | Temple | 32,546.13 | 1,903.39 | 2,950.00 | Waldens Ridge | 49.08 | 67.04 | |
| Dunlap | 566.79 | 77.07 | 340.45 | Trinity | 675.00 | 473.20 | | Washington | 6.25 | 23.25 | |
| Ebenezer | 90.00 | 47.19 | | Union Avenue | 19,416.77 | 3,254.10 | 1,383.67 | Wolf Creek | 134.58 | | |
| Ewtonville | 118.40 | | | Wells Station Chapel | | 6.75 | | Yellow Creek | 69.67 | 28.89 | |
| Griffith | 76.01 | 18.85 | | White Haven | 375.00 | 343.82 | 12.50 | TRUETT | | | |
| Jasper | 23.77 | 29.75 | | Whitten Memorial | 69.40 | 93.34 | | McEwen | 110.72 | | |
| Kimball | 154.82 | 22.84 | 15.00 | Winchester | 273.67 | 88.02 | | Oak Grove | 76.44 | 30.75 | |
| Lee Station | | 27.35 | | Woodstock Association | 11.74 | 20.39 | 6.73 | Sylvia | 163.33 | 18.94 | |
| Mountain View | 19.32 | 20.00 | | SOUTHWESTERN DISTRICT | | | | Waverly | 93.07 | 4.85 | |
| Pikeville | 97.55 | 24.01 | | Chalk Hill | 108.00 | | | UNION | | | |
| Richard City | 290.52 | 60.95 | 10.00 | Flatwoods | 43.70 | 22.45 | | Bolling Springs | 16.00 | 4.00 | 4.00 |
| Sequatchie | 9.52 | | | STEWART | | | | Campaign Mission | 28.78 | 2.06 | |
| South Pittsburg | 2,621.56 | 319.50 | 150.00 | Big Rock | 566.11 | 134.85 | 125.00 | De Rossett Mission | .94 | | |
| Whitwell | 422.85 | 49.66 | | Carlisle | | 14.69 | | Doyle | | 22.73 | |
| SEVIER | | | | Corinth | 9.00 | 5.00 | | Falls City | 22.78 | 7.24 | |
| Alder Branch | 270.00 | 189.81 | 100.00 | Crocketts Creek | | 1.40 | | Greenwood | 24.00 | | 10.00 |
| Antioch | 100.00 | | | Dover | 415.06 | 159.04 | | Gum Spring | 3.94 | | |
| Banner | 16.76 | 11.28 | | Model | 276.78 | 67.84 | | Hickory Valley | 22.50 | | |
| Beech Springs | 427.38 | 36.31 | 50.00 | Nevils Creek | 74.75 | 36.60 | 10.00 | Hopewell | 1.50 | | |
| Bethany | | 4.00 | | Oak Grove | 10.00 | | | Laagar Mission | 12.98 | 8.98 | |
| Boyd's Creek | 327.76 | 87.15 | | Pleasant Grove Association | 4.11 | 20.00 | 20.00 | Laurel Creek | 14.99 | 4.50 | |
| Du Pont | 90.00 | 20.00 | | STOCKTON VALLEY | | | | Liberty | 2.07 | | |
| French Broad Valley | | 7.50 | | Pleasant View | | 25.00 | | Morrison Mission | 3.83 | | |
| Gatlinburg | 580.72 | 311.01 | 125.38 | STONE | | | | Mt. Elim | 50.55 | 19.00 | 33.00 |
| Gists Creek | 52.76 | | | Algood Mission | 37.30 | 5.00 | | Mt. Pleasant | 3.00 | | |
| Hills Creek | | 12.46 | | Bear Cove | 5.00 | 31.53 | | New Union Mission | 2.61 | | |
| Jones Chapel | 12.00 | 12.00 | | Bear Creek | 1.03 | | | Southern Baptist Foundation | | | |
| Knob Creek | | 39.34 | | Brotherton | 5.12 | 3.60 | 1.00 | The only absolutely safe place to | | | |
| Lebanon | 11.00 | | | Cane Creek | | 25.00 | | put our wealth is in the Bank of | | | |
| Millican | 39.13 | 81.80 | | Caney Fork | 16.00 | 36.00 | | Heaven. Deposits may be made through | | | |
| Mountain View | 14.35 | | | Cedar Hill | 50.00 | 7.40 | 7.53 | Southern Baptist Foundation | | | |
| New Era | 45.00 | 35.00 | | Cookeville | 1,636.75 | 797.49 | 1,005.00 | 27 9TH AVENUE N. NASHVILLE 3, TENN. | | | |
| New Salem | 52.45 | 11.00 | | Dillard Creek | | 3.50 | | PAGE 15 | | | |
| Oldhams | | 25.10 | | Gainesboro | 105.10 | 7.00 | 15.00 | | | | |
| Pigeon Forge | 89.29 | 73.00 | 10.00 | Hampton Cross Roads | 2.41 | | | | | | |
| Red Bank | | 24.00 | | Hanging Limb | 5.12 | | | | | | |
| Roaring Fork | | 63.46 | | Macedonia | 4.00 | | 4.00 | | | | |
| Sevierville | 2,674.07 | 562.10 | 263.00 | Mill Creek | 1.54 | 20.00 | | | | | |
| Shady Grove | | 35.00 | | Monterey | 898.03 | 205.56 | 92.00 | | | | |
| Sims Chapel | 10.00 | | | New Salem Mission | .52 | | | | | | |
| Walnut Grove | | 4.60 | 9.36 | Poplar Grove | 23.13 | 16.60 | 50.32 | | | | |
| Wears Valley | 30.00 | 135.00 | | Poplar Springs | 33.00 | | 12.00 | | | | |
| Williamsburg | 12.05 | | | Rocky Point | 1.62 | 4.00 | | | | | |
| Zion Grove | 7.42 | 55.20 | | Sand Springs | 4.50 | 30.00 | 36.25 | | | | |
| Zion Hill | 78.15 | 22.99 | | | | | | | | | |
| Association | | 42.63 | | | | | | | | | |

