

Christ Has Been Double-Crossed

What's happened to Christmas? That is, the real spiritual meaning of the day and the season? Has it dissolved in a commercialized season in our American cities opened by a parade of grotesque balloon figures of Felix the Cat, Al Capp Schmoos and similar creations which cannot by wildest stretch of imagination have any connection with Christmas? Has it been drowned in the free-flowing liquor of so-called "office parties" and drunken celebrations sometimes held in homes and taverns unhesitatingly using Christmas as excuse for vulgar jollification and excesses? Has its spiritual message been crowded out by so-called Christmas cards illustrating cocktail shakers, cigarettes, dogs, airplanes, and what have you?

Christ has been given the double cross by the paganization of the Day that should be remembered as his natal day. Drunken parties, suggestive greeting cards, greedy commercialization, speeding car smashups are fast becoming the symbols of America's celebration of Christmas. This has reached such a point that the December issue of *Pageant* in an article states that our Christmas orgies of sex, liquor and smashup have reached the point where they are a national disgrace. This kind of observance of Christmas took toll of 724 lives last year, 144 more than the previous year. It has come to the point where in many a home Christmas Day is not a time of spiritual significance and of family celebration but a dull remorseful hangover of aching or broken skulls.

Let's do all we can to help toward a more Christian observance of Christmas. That means putting Christ at the center. It means less emphasis upon what we are going to get for ourselves and more upon what we are going to give to the world's hungry, homeless underprivileged. Because of the world's millions of sufferers we need to think of others as never before. And if we use the opportunities aright which are ours then we will present Christ and His Redemptive Love in pageant, carol, song, sermon, loving deed and unselfish remembrance of others.

Keep America The Friend of Religious Liberty for All

The American people are aroused. They are not going to be led down the road to Rome. Freedom-loving Americans want none of the clericalism growing so rankly at the end of the Roman road. They are becoming awakened to the significance in the President's appointment of an ambassador to the Holy See. They are now speak-

ing up by the millions against taking the long stride Romeward through diplomatic representation with the Head of the Roman Catholic hierarchy. The President and Congress will keep on getting the protests of aroused Americans, but of course there are some people who can't sense any danger.

To those unsuspecting souls who still refuse to open their eyes to what the Vatican envoy really means the following letter from Rev. A. Mauricio, President of the Baptist Convention of Portugal, should be enlightening:

"Upon the first news of the decision of Mr. Truman the Catholics here exclaimed, 'Truman kisses the hand of the Pope! America kneels to the Vatican! Soon America will be Catholic!' If Mr. Truman succeeds in sending somebody to the Vatican, all missionary work among Catholic people will be in great danger. America is the hope of all free peoples. The two great foes of freedom are Catholicism and Communism, but in my judgment Catholicism is worse for the United States because your people do not know of the real situation in Catholic lands. We are under so-called 'tolerance,' not liberty. As one example, we cannot build houses for our churches. If I could I would say this and more to your people, but I cannot write all that I desire. God keep America the friend of religious liberty for all peoples."

That is the situation in lands under the heel of clericalism—a clericalism that means pursuit of power, especially political power by a religious hierarchy, by secular methods and for purposes of social domination. Those who do not bow to that power are treated as third class citizens, deprived of true freedom and subject to penalizing restrictions.

Baptists and Protestants are determined that the evil weeds of Roman Catholic clericalism shall not be permitted to grow in America and threaten the precious seed of freedom planted here and nurtured at such great cost.

We have previously called attention to pamphlets dealing with this issue but we have just received another which we urge all our people to secure at once: *"The Battle for America"*; this is a 16-page booklet written by Dr. Joseph M. Dawson, executive secretary of the Baptist Joint Committee on Public Affairs, 1628 Sixteenth Street, N.W., Washington 9, D. C. Dr. Dawson states, "In the common effort to prevent the violation of the American system of separation of church and state through the appointment of an Ambassador from the United States to the Vatican, this office has prepared a sixteen-page booklet of informed discussion for the benefit of our people. By the courtesy of the Southern Baptist Sunday School Board, the Baptist Joint Committee on Public Affairs is enabled to print and offer it free to readers. We propose to distribute an edition of 100,000 copies with no cost to readers except that of postage." This is a patriotic service of real help. We hope our people will secure at

BAPTIST AND REFLECTOR

Belcourt at Sixteenth Ave., S. - Nashville

Official Publication of the Tennessee Baptist Convention

CHARLES W. POPE, Executive Secretary

RICHARD N. OWEN..... Editor
FRED W. NOE..... Business Manager

Entered at Postoffice, Nashville, Tenn., as second-class matter as a weekly except Christmas week, under the act of March 3, 1879.

Terms of Subscriptions—Single subscriptions payable in advance, \$2 per year. Church budget rate \$1.20. Advertising Rates upon request.

Cost of cuts must be paid by those submitting pictures for publication.

Space forbids full printing of Resolutions and Obituaries. News-value items in such may be used.

TENNESSEE BAPTIST PRESS, Inc., Nashville, Tenn.
DIRECTORS: EDWIN E. DEUSNER, President; J. R. KYZAR, Secretary; WALLACE CARRIER, DAVID N. LIVINGSTONE, T. C. MEADOR, D. P. MCFARLAND, E. L. SMOTHERS.

Reflections

Taxes are the only things we know of that defy the law of gravitation.—*Outdoor Ind.*

It isn't smart to argue with a fool; like fools can't tell which is which.—*R and R Magazine.*

It has been estimated that within the next ten years one out of every twenty seven Americans may either be killed or injured by a drinking driver.—*Concern.*

Many persons would be religious if they could only find a faith that would not interfere with their personal lives.—*Christian Conservator.*

Between World War I and today, life in this country has been altered more than in all the previous 300 years of our history.—*Editorial in Social Education.*

I find it very difficult to reconcile a position that the liberties of the communists to organize must be maintained, while the liberties of loyal young Americans must be taken away by a peacetime draft to protect their country against the communists.—*Harold Stassen, Man Was Meant To Be Free.*

once a copy of this informed discussion.

In the past few days we have received copies of protests taken by various churches and bodies against Vatican representation also numerous sermons, addresses and articles dealing with this issue which would require many months to print. Never has any matter stirred up such a storm of protest among the American people as the President's proposed ambassador to the Vatican.

THE MUCH-NEEDED REVIVAL

Note that my heading does not speak of a much-needed "Big Meeting," as we country folks used to call them; it does not refer to a much-needed "evangelistic campaign"; it does not call attention to a much-needed "annual revival"; it does not point to the much-needed "religious emphasis week." God has used all of these methods to bring help and blessing to me and to his people generally. He will probably continue to do so. "So mote it be!"

But if I read the situation of today correctly, it calls for something that reaches down deeper into the conscience and life of people than any mere going through the motion or any simple conformity to routine. The revival that I have in mind is a movement in the realm of spirit that is analogous to the one inaugurated and set in motion in the 18th century by the Wesleys and George Whitefield. I am thinking of the kind of revival that issued from the preaching of Jonathan Edwards. I have in mind a movement in the souls of men that will remind the world of the days and the work of Charles G. Finney.

Gerald Heard is striking at the thing I have in mind when he says, "There would seem to be at the heart of religion something that does alter character, can actually make super-character, and may in rare but highly influential cases, actually create a new quality of consciousness. Here then should lie, could it be stated in contemporary terms, the answer to our moment's desperate challenge: to produce men adequate and able to sanction civilization, and a real psychology—a science of spirit—adequate to balance our otherwise fatally enlarged science of matter" (*The Creed of Christ*, p. 31).

But notice that in my reference to former movements I have used the word "*analogous*." We must not demand that the Spirit of God repeat Himself. Our Lord said to a noted religious leader of his day, "The wind bloweth where it listeth, and thou hearest the sound thereof, but canst not tell whence it cometh, and whither it goeth" (John 3:8). Is he not teaching us that we must leave the Spirit to do his work in his own way? The thing or the experience that is in my mind in the use of the phrase "Much-needed" is to be found in a little story that came to me from Dr. Henry P. VanDusen. It is this: A group of college boys were in a "Bull Session." The topic under consideration at the moment was, "What is the trouble with religion?" One boy ventured the opinion that there was nothing wrong with religion, and added the assuring statement, "I believe in God." They took a vote on the spot

as to how many believed in God. Practically every hand went up, and went up with quite a degree of enthusiasm. Upon this, another boy cast a serious damper on the meeting by raising the question as to how many present could say that God was a present reality to them? Only a hand or two went up, and they in a feeble, doubting way. Right here, in my judgment, is the secret of our flabby, hesitating attitude in religion.

Until we can see this lamentable source of our weakness corrected and see a vital consciousness of God come to be a present and controlling reality in the hearts and lives of those who bear his name, we have nothing with which to meet the world, the flesh, the devil, the Communists and all the other foes of God and of righteousness, both in the flesh and in the spirit. The Wise Men of Israel said, "the fear of the Lord is the beginning of wisdom." Such "fear" can never be present without a consciousness of God's presence.

Reference was made above to the Wesleys and the marvelous movement set in motion through them. Those who know the facts in the case will recall that it was only after John Wesley's heart was "strangely warmed" in the Aldersgate prayer meeting in London in May, 1738, that his preaching and his testimony were with converting power and with life-changing results. So great was this power after this experience that the historian Lecky said that had it not been for the influence of John Wesley, England would have had to endure just such an experience as those across the Channel did in the awful French Revolution.

When we who bear the name of Christ shall experience and exhibit a consciousness of God as a present reality, the much-needed revival will be here, and our Christian people will go forth as the hosts of the Lord, conquering and to conquer in a way that is sadly lacking today. This is the way the whole matter impresses one who longs and prays that he may see this "much-needed revival" come to pass, and come with power and blessing.

BUT HOW IS IT TO COME?

Suffer four suggestions here: (1) It can come only as God shall become a precious reality to those who believe in Him. (2) There are people who have come into such close and vital fellowship with God that he can and does communicate himself to others through them. When such people are found, they should be used as widely as possible. (3) The good man who taught me Greek many years ago told me one day

in a private conversation that wherever John uses the word "true" and "truth" they should be translated "real" and "reality," respectively. That is to say, the time of shadows, the time of figures of speech, the time of being guided by the pillar of cloud by day and pillar of fire by night is now a thing of the past. In the coming of "the Word" in human flesh (John 1:14), we now have God made available to each of us at firsthand. (4) A few months ago I was visiting in Asheville, N. C., and asked my hostess one day whether she realized that she was just then in eternity. "No, Mr. Cullom," said she, "I never thought of such a thing." Then I said, "If I know what the word eternal means it is that which has no beginning and no end. If that be true, are we not just as truly in eternity just now as we shall be a thousand years from now?" "I guess we are," she said. And we truly are.

It is therefore just as truly our privilege to enter into and cultivate a vital and immediate fellowship with God right here and now as it will be when our bodies are in their graves. If this assurance does not give a special significance to the lives we are living moment by moment, it is hard for me to think what could do so. We are *at this very moment* in God's eternal school. When we shall have this fact continually and perpetually in mind and govern ourselves accordingly, the much-needed revival, I repeat, will be a reality. The time to begin is the present moment and the place to begin is just where one is.

Rep. Brooks Hays Named Washington "Layman of Year"

WASHINGTON, D. C.—(RNS)—Rep. Brooks Hays (D.- Ark.) has been named "Layman of the Year" in the nation's capital by the Washington Federation of Churches.

It is the first time in the 14-year history of the award that it has been given to a member of Congress.

Mr. Hays is a member of the House Foreign Affairs Committee. He is known as a strong advocate of international cooperation and of the good neighbor policy.

A Baptist, he has been active in church work in the nation's capital during his ten years of residence here, and also has maintained an active interest in his home church in Little Rock.

Next Sunday's Lesson

by O. L. RIVES, Professor of Religious Education, Carson-Newman College

Lessons based on International Sunday School Lessons; the International Bible Lesson for Christian Training, copyrighted by International Council of Religious Education

TEXTS: Joshua 1 to 11 (Larger)—Josh. 1:1-7; 6:1-5, 20 (Printed)—Josh. 1:5 (Golden).

The Conquest of Canaan

The devotional reading, Deuteronomy 32:9-3, constitutes an appropriate beginning and introduction to the lesson. In it, which is a part of one of the songs of Moses, we note how the Lord's people are thought of as His inheritance and are regarded in endearing terms ("the apple of his eye"). They are compared to an eagle, the monarch of the air. By implication, they are promised victory and spiritual health with strength derived from Him.

The Promised Presence (Josh. 1:1-7)

They had been given a new leadership. Joshua had taken the place of Moses, who had gone to be with the Lord. The people were not to mourn too long at his passing, but were to recognize Joshua as their God-given leader. Then, as now, God buries the worker but the work must progress. The people of a great empire, today, have this in mind when they change rulers (due to the death of the one) and say: "The king is dead. Long live the king." Let us regard leadership in terms of function and be loyal accordingly.

They had come to a new land, Canaan. It was strange as well as challenging. It was the land promised by the Lord to Abraham, their ancestor removed by several generations. God's contract with him was still in force, but his offspring were now being called upon to enforce it. The difficulties that were confronting the Israelites were formidable but not insurmountable. When we face new situations, under the Lord's leadership, we should do so with an eye single to His glory and with an attitude becoming us as His servants.

They were assured of a new strength, a strength that had its origin in the unlimited power of God. And this was the real reason why their enemies could not hope to stand before them. The new land was rich and wide and its present inhabitants were numerous and powerful, but God was more powerful than all combined. He would channel a part of His might through His people in order to accomplish His purposes. Let us, as a people and as individuals, be sure that our trust is properly placed. See Ps. 146:3, Ps. 52:7, Prov. 11:28.

They were to possess a new courage. And the word, courage, is derived from a word that means heart. Ours is an age that fatigues both the body and the spirit. Many persons are living on the borderland

of exhaustion and need a new courage. When we learn to live close to the heart of God we will possess something of His courage. Then we will be characterized by a line from Vergil's writings, "We can because we think we can."

They were to manifest a new fidelity. "Turn not from it (the law) to the right hand or to the left," spoke the Lord to Joshua and through him to the Israelites. "Semper fidelis" is the watchword of the U.S. Marines, written in battlefields all over the world. Would that the Lord's soldiers had this!

The Tasted Triumph (Josh. 6:1-5, 20)

First, the Lord foretold this triumph. And this, in turn, would become a token of future triumphs. The details of procedure were explicit so far as the conquering Israelites were concerned. At first glance, the instructions given seemed to be foolish. Whoever heard of an army taking a fortified city by marching around it and blowing trumpets? But these were the Lord's commands and the people were simple enough in faith to carry them out. The number of seven stands out in the instructions. Seven was one of the numbers that was sacred and carried with it the idea of completeness. In God's Word, the Bible, we find all of the instructions we need to guide us in our spiritual conquests. If we follow them with implicit faith in Him, we too may hear Him foretelling us of triumph, complete and final. Ours is a sacred mission.

Second, the Lord's people (the soldiers and the priests) accomplished their appointed task. Jericho's walls tumbled in a heap according to promise. The marching, the blowing of the trumpets and the shouting of the people were too much when accompanied with the destructive power of Almighty God. The flattening of the walls cannot be explained except upon miraculous grounds, although many have tried to explain their collapse upon purely naturalistic grounds. With her defenses gone, Jericho became an easy prey to the invading Israelites. The conquest was marvelously complete. It is a good thing when the Lord's people can taste a triumph. For one thing, it raises their morale. For another thing, it strikes terror to their enemies. Again, it is pleasing to the Lord. God's presence guarantees triumph, always.

What's Behind Appointment of Ambassador to Vatican

By Charles A. Wells in
"Between the Lines"

Vatican appointment: Here is what's behind President Truman's recent appointment of an ambassador to the Vatican:

First, it is evident that Protestant indifference—our empty pews and disintegrating spiritual and organizational loyalties—have advanced to the point where enough pressure could be put on a Protestant Baptist President, who is also a 33rd degree Mason, to force him, for the sake of political support, to do what must be abhorrent to him. The anti-Truman political bloc chiefly powered by Catholic voices, the McCarthys, McCarrans, etc., have been successfully creating the impression in the minds of millions of uninformed Catholic voters that they couldn't be good Catholics unless they voted against Truman. By one stroke the President cut the jugular vein of this sly campaign and got a new fresh grip on millions of Catholic votes.

The second great reason for the President's action is the growing crisis in Italy. As we have reported in recent issues, the American news sources, timid before Vatican and hierarchy pressures, have suppressed much of the news of the increasing desperate economic situation existing in Italy—conditions that mean Italy could readily go Communist in some violent sudden storm of hunger and desperation. One of the leading liberal American Catholic voices, Msgr. Edw. E. Swanstrom, an executive director of the National Catholic Welfare council, on returning from Italy, ignored the hierarchy ban of silence concerning the misery of Catholic-dominated Italy and openly warned that unless some miracle is wrought in Italy *soon*, communism is inevitable. He reported that American aid dollars had not been permitted to reach the millions of Italy's poor—had been funneled into the coffers of Italy's rich nobility. If Italy goes Red, all of the Mediterranean will go Red. The President's ambassadorial appointment is another move in the cold war to save the collapsing Western civilization—collapsing because it has not been willing to accept normal changes . . . progress inspired by Christian truth.

Church Pews & Pulpit Furniture

Priced for the most conservative budgets

Prompt delivery

Inquire - No Obligation

Leitro Manufacturing Co.
P. O. Box 1820

Little Rock, Arkansas

BAPTIST AND REFLECTOR

It's about time to begin thinking how we will decorate for Christmas at home. Perhaps you and Mother have already given the house a special cleaning, to get things ready for the holidays. Everything is spick and span.

It won't take much to give a house a Christmasy appearance. A few evergreens and some red berries will do wonders. Perhaps you can make a wreath for the door, and arrange some evergreens and pine cones as a centerpiece for the table. They will also be pretty hung over the mantle or arranged in vases about the house.

Christmas trees are always pretty—with bright lights, tinsel, and shiny ornaments, or with strings of cranberries and popcorn, paper chains, and other homemade decorations. For your tree this year, maybe you would like to make *straw balls*.

For each ball you will need about twelve straws. Colored ones are prettier, but plain ones will do. If desired, these may be brightened up by rubbing them lightly with colored crayons. Cut each straw into three equal parts. Place all of these together (36 short straws) and tie them *very tightly* in the middle, with string or fine wire. You'll be surprised at how easy it is to shape the tied straws into round balls. The string or wire should be left long enough to tie onto the tree.

Last Christmas I helped an eighty-year-old man trim his table-sized tree with Christmas cards. Eagerly he waited for the postman each day. And by the time Christmas

day arrived, every limb of his little tree bore at least one bright card. What fun my old friend had adding the cards to his tree each day! What fun he had pointing them out to callers during the Christmas season and talking about the friends who had sent them. Those friends would have been very glad to know of the happiness their Christmas cards brought to this special friend!

You might like to use some of your cards to decorate your tree. Some of them you might place on your windows and the glass part of your door. Scotch tape will hold them in place on the glass, yet be easy to remove after Christmas.

A "clothesline" stretched across one corner of the room makes a good place to display Christmas cards. Paper clips or regular ornament hangers serve as good "clothespins" to hold the cards in place.

I heard recently of a way to display cards on a clothes hanger! The hanger was covered with evergreens, and streamers of ribbon hung from the bottom. The cards were attached to these streamers.

Do you have a favorite way of displaying your Christmas cards? Have you made some tree ornaments or other decorations which you would like to tell us about? We are always anxious for new ideas along this line. So be sure to write us all about yours. If you have a sample to share, that would be wonderful. But, of course, that isn't necessary. We'll be grateful just for your ideas.

Isn't getting ready for Christmas *fun*?
Isn't Christmas a happy time?

Nash Grove Uses Lord's Acre Plan

Members of the Nash Grove church, New Salem association, realized \$1,233 proceeds toward erecting their new church building out of their "Lord's acre plan" projects started last May under the leadership of pastor Herbert J. Goodwin. Men and women members worked hard on preparing the products which were turned into cash for their church. Calves, hogs, corn, chickens, eggs, canned goods, quilts, etc., were sold following a service in their church where Carson-Newman ministerial student Goodwin offered thanks for the Lord's blessings and pastor Howard Thompson of Westview church, Cookeville, brought the message for the occasion.

J. B. Riddle of Hendersonville, N. C., has been called as pastor of the Pistole church in Union association. Brother Riddle completed the courses at Harrison-Chilhowee and attended Mars Hill College and Fruitland in N. C.

Religious Education Workers Meet

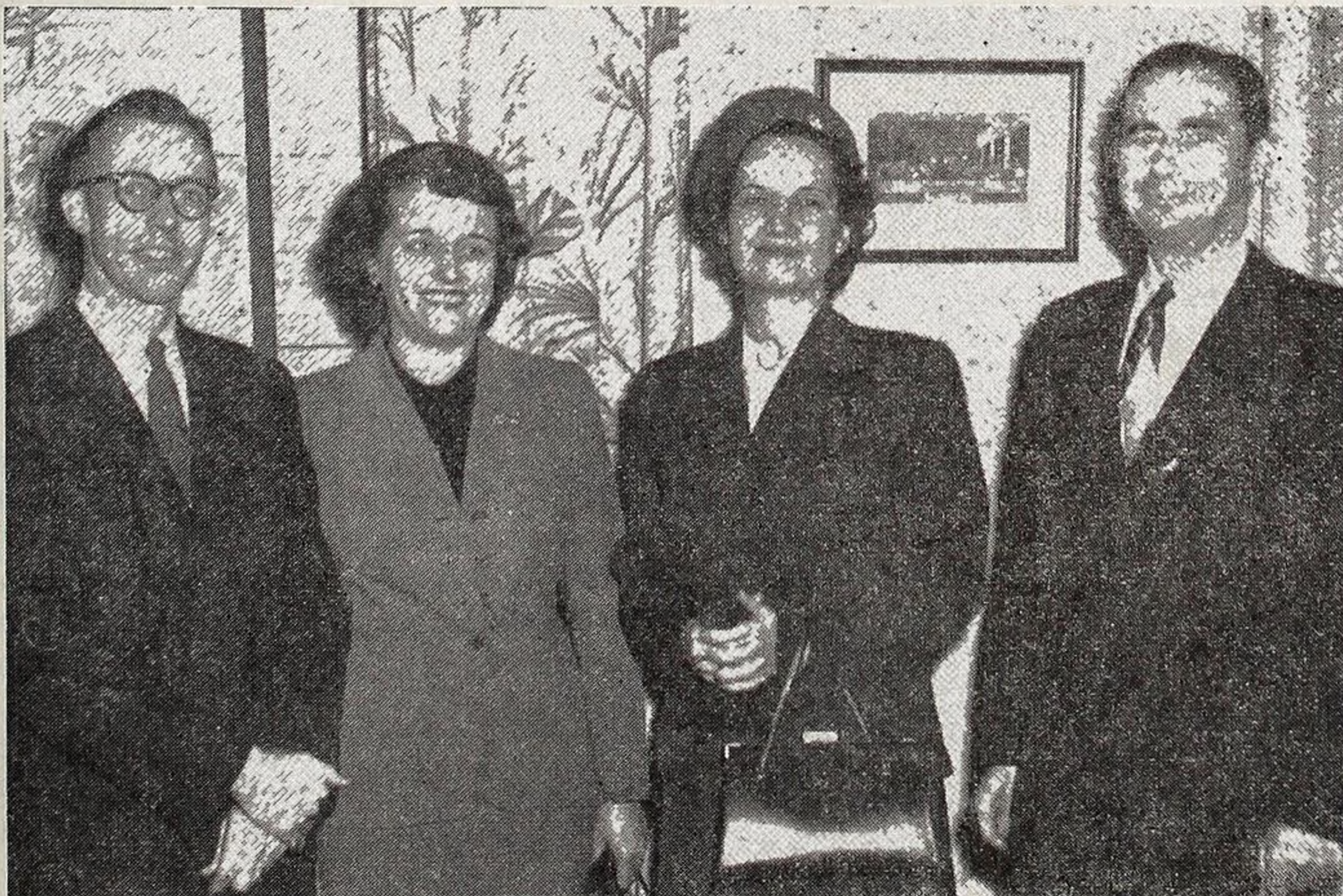
The second annual meeting of the Tennessee Baptist Religious Education Association was held prior to the state Baptist Convention meeting in Chattanooga, November 13-15, at the First church.

The program began with a lovely banquet on Monday night. Mr. Charles Ed Howell of Nashville, spoke on, "Planning a Church Calendar of Activities," and Dr. Gaye L. McGlothlen, Immanuel church, Nashville, discussed "The Educational Program of a Baptist Church." Special music was presented by a ladies trio from Central church, Chattanooga.

During the Tuesday morning sessions, highlights of the 1952 program of the state departments of Sunday school, Training Union, Student work, Woman's Missionary Union, and Brotherhood were presented by the heads of those departments. The problems of the various areas of the religious education program were discussed under the theme, "My Biggest Problem."

A constitution was adopted and new officers were elected at the business session. The 1952 meeting place will be Highland Heights church, Memphis, November 13-14.

Purposes of the organization are to provide a medium of fellowship, an opportunity for discussion of common interests and problems and to promote sound religious education in the Baptist churches of Tennessee. The 1952 membership fee of \$2.00 must be paid by January first, and should be sent to Mrs. Howard Kerr, Central church, Chattanooga, Tenn.



Officers of the Tennessee Baptist Religious Education Association for 1952 are (left to right): Rev. Cecil Lea, of Nashville, president; Mrs. Howard Kerr of Chattanooga, secretary-treasurer; Miss Mary Anderson of Nashville, vice-president of Middle Tennessee; Rev. J. L. Pollard of Memphis, vice-president of West Tennessee; and Miss LaVerne Ashby of Knoxville (not shown in picture), vice-president of East Tennessee.



Ghosts in the Training Union Cemetery

by MRS. E. E. HALE

SCENE: Four tombstones which bear the names "B.T.U.," "B.Y.P.U.," "CLASS," and "STORY HOUR" are lined up on the platform. (We made paper slip-covers for 4 round-topped metal chairs and propped them against the choir railing.) Green lights flood the scene.

As the scene opens, a ghost rises from behind each tombstone.

THE GHOST OF B.Y.P.U.: This is quite a meeting we have here tonight in our Training Union Cemetery—and an important meeting it is—to welcome a new member to our fellowship, the Fellowship of Discarded Terminology in the Training Union.

GHOST OF B.T.U.: It's been quite some time since we had a new member. B.Y.P.U., you've seen us all come, haven't you? You lived the longest upon earth—had a life of great usefulness in the church—and died of old age.

B.Y.P.U.: I can remember when the only people that came to Training Union were young people—so it is easy to see why I died of old age. B.T.U., how did you happen to come to be with us? Seems to me that I still hear of your being around in the churches.

B.T.U.: Yes, I still haunt some of the churches that haven't become acquainted with my successor, TRAINING UNION, but I always was a weakling—just never could get filled out. I was always being mistaken for British Thermal Unit, or something besides Baptist Training Union. Naturally, I was a misfit on earth.

CLASS: I was a misfit in TRAINING UNION, too. I don't know how I ever got there in the first place. I am perfectly happy and contented in the Sunday school—but I couldn't find a place in Training Union. In fact, my being *here* at all is the result of mistaken identity. But here is our little new member. How did you happen to be one of us? It seems very sad that one so young as you should have to go.

STORY HOUR: To tell you the truth, I died because I just tried to do too much—over-taxed myself. You know, in the last few years the children have been doing so many more things than just listen to stories—and so many of the churches began to need more organization than I could manage—that it soon became evident that I just wasn't big enough for the job. At least I can be happy that they had to get three terms to take my place—PRIMARY, BEGINNER, and NURSERY DEPARTMENTS or UNITS. But the saddest part of all is that I still have to go on haunting some of the Training

Unions because they have not yet heard of my successors.

B.Y.P.U.: Friends, I know it is hard on you to have to go on working after your time of usefulness is passed, but the time will come when you can be laid to rest for good as I have been. Hardly anyone speaks of the B.Y.P.U. anymore. B.T.U. and CLASS are getting more rest lately—and it will not be long until you, too, little STORY HOUR, can rest forever, no longer to be used on earth again!



WORKMEN UNASHAMED

A. V. WASHBURN

"Perhaps the most significant achievement of Southern Baptists in recent years is the growing concern for trained workers in our churches. The Sunday School Training Course is becoming a vital ally to increasing numbers of churches as they plan and promote a training program for their Sunday school leaders. 'Workmen Unashamed' is the watchword.

"The business of teaching God's word and winning the lost to the Saviour is a high and holy calling. Preparation for the task is a serious matter. Let us continue to hold up the highest standards possible in all our training work, for as we train so shall our fruitage be. One pastor says, 'For five years we have sought to lift the work of a Sunday school worker to the level of high privilege and responsibility. It has been our policy that every worker must have, as a minimum, the Sunday School Worker's Diploma. Surely the supreme importance of the work could require no less.'

"To this high dedication we heartily agree. And by the same token we would maintain high standards for the training work done. Basically there are *only two ways* that credits may be earned in the Sunday School Training School Course and all requests for awards should measure up to the requirements.

"(1) *The Class Study Plan* requiring that the equivalent of seven and one half hours of class work be offered—that a worker who attends all sessions and reads the book may receive an award without an examination—that otherwise a worker *must* attend the equivalent of six forty-five-minute sessions, read the book (at least within two weeks), and pass a written examination in order

B.T.U.: Psssst . . . here comes somebody! (Ghosts hide behind tombstones.)

Enter a Training Union family labelled as follows: TRAINING UNION, ADULT DEPARTMENT, YOUNG PEOPLE'S DEPARTMENT, INTERMEDIATE DEPARTMENT, JUNIOR DEPARTMENT, PRIMARY DEPARTMENT, BEGINNER DEPARTMENT, NURSERY DEPARTMENT.

TRAINING UNION SPEAKS: We come to pay tribute at the grave of the term "STORY HOUR." It has served faithfully. May it rest now in peace.

PRIMARY, BEGINNER, AND NURSERY DEPARTMENTS come forward and deposit flowers on the "grave" of STORY HOUR.

(We believe you may want to use this skit in your Training Union to present the correct terminology for our Children's Work.)

to qualify for an award.

"(2) *The Individual Study Plan* requiring a careful study of the book and an individually prepared paper answering *all* the questions in the book *or* a brief summary of each chapter amplifying the chapter outlines. (If a number of workers meet together after individual study to share in a discussion of the book, unless the time requirement for class study is met, the full requirements for the *Individual Study Plan* apply.)

YOUR HELP IN THESE MATTERS PLEASE

"Here are some of the problems the Sunday School Department faces in efficiently handling training course awards—your co-operation in eliminating these problems will be greatly appreciated:

"Failure of class teachers to request awards for their training classes.

"Names of churches and associations sometimes omitted making it possible to assign proper credit.

"Failure to indicate name and address of the person to whom awards are to be sent.

"Failure to check compliance with requirements.

"Failure of pastors, superintendents, etc., to deliver awards to people earning them.

"Requests for awards when requirements have not been met.

"Requests for exceptions to be made far out of line with the requirements.

"May we earnestly urge the maintenance of the highest standards for our training work in keeping with its purposes and worth."



Woman's Missionary Union

MRS. M. K. COBBLE, President
MISS LAURA FRANCES SNOW
Young People's Secretary

MISS MARY NORTHINGTON, Executive Sec'y Treas.
MRS. DOUGLAS GINN
Office Secretary

Our W.M.U. Magazine Record

In ten months Tennessee has sent to the Birmingham office the following subscriptions, 14,122 Royal Service; 2,330 Window of Y.W.A.; 4,953 World Comrades and 3,181 Ambassador Life. We have not met our quota for the year, so be sure and forward your subscriptions before January, first. No more appropriate gift could be made at Christmas than a subscription to one of the W.M.U. magazines. The price is one dollar a year. Order from Woman's Missionary Union, Birmingham 3, Alabama.

* * *

Help Please!

An order with twenty-five cents enclosed for a dozen Guide Books came from Mildred Konig with no address. We will be happy to send the order if you will tell us the address.

A check came from Jackson not signed for \$2.65 on the First National Bank of Jackson. The material was sent and not until later did we find the check unsigned. Did you get the material in Jackson in October and your check was not cashed? Thank you for your help. Write the W.M.U. Belcourt at 16th Ave., South, Nashville, and we will return the check for signature.

Going Beyond the Goal

by RUBEN I. FRANKS

To the president of the Woman's Missionary Society in the local church, statewide, going over the goal for the Lottie Moon Christmas Offering means "a job well done." There have been programs, prayers, and sacrificial giving, and once again the women have shown their loyalty to missions by their offerings for its support. To the pastor, it means a feeling of pride and satisfaction that his church has carried its share of this responsibility for the worldwide mission causes. It means that he can hold his head up among his fellow preachers and say that he, too, pastors a mission-minded church. To the individual giver, there is a sense of clear consciousness in the belief that perhaps somewhere, in some "far-off corner," his or her individual gift may mean the difference in someone's eternal welfare. To the missionaries on the field, it means the purchase of a new mission home or station wagon, or the procuring of some desperately needed hospital supplies: something greatly needed can be done because of this

available money. Let me give one specific instance of what "Beyond the Goal" means to the Baptist of Guadalupe here in Costa Rica. To them, it means a new church building.

To the Baptists of this little suburban city of San Jose ten thousand dollars was given out of the "Beyond the Goal" from last year's offering for a building. By cutting corners, and with the church members helping all that they could, the money has built a perfectly lovely new brick and stucco edifice with an auditorium that seats three hundred and fifty, with Sunday school rooms, fluorescent lighting, and a baptistry—the first to be built in a Baptist church in Costa Rica.

It means that instead of having one little room in a tiny house on a muddy street in which to meet—a place that was the very epitome of inadequacy—there is now a beautiful temple that bespeaks man's love for Christ, and that lends prestige to the Baptist work in this Catholic city. It also means that instead of the twenty-five or thirty who were regularly attending the services a year ago, over four hundred crowded into the new church building one Saturday night in September to attend the dedication service and to hear Dr. Jose Maria Ruiz, an ex-priest from Nicaragua, preach the inaugural sermon.

It means that the church members were so filled with gratitude for this new church, that when the opportunity was given on Sunday morning to testify, they vied with each other for the floor so that they could give public expression of the appreciation that they felt in their hearts. One of them, "Colonel" Zamora, nicknamed "Colonel" because of the soldierly way in which he carries himself, rose and spoke of the fifty years that he spent in sin before finding Christ as his Saviour. Then he broke down and wept with gratitude as he thought of how his friends and neighbors would now have an opportunity to come and hear the gospel, too.

It means that during the week of special services following the dedication, more than thirty persons have made a public profession of faith in Christ and many others have renewed their allegiance to the Lord. One woman, after her conversion at one of the services, went home to destroy the Catholic images that she had been worshipping—and this without even being told to do so.

If each of you who gave last year to the Lottie Moon Christmas Offering could have been to Guadalupe, you would have realized as never before that "Beyond the Goal" really and truly means something. Each of us thank you from the bottom of our hearts.



L. H. CANADA

Under the leadership of L. H. Canada, Pleasant Hill church, Madison-Chester association, entered a full-time program, November 12. They have redecorated the entire building and installed a gas heating system; hardwood floors and new pews were also added. This church has the BAPTIST AND REFLECTOR in its budget and is an active supporter of the Cooperative Program.

Resolutions sent BAPTIST AND REFLECTOR by J. Clark Hensley, Mack Pinkleton, and Reeves Steelman concerning the resignation of Lloyd Hickman, who has served as associational missionary in Giles county for the past two and a half years, speak of Brother Hickman in these words, "We accept with regret the resignation of Brother Hickman. He is deeply evangelistic at heart, ever alert as a personal worker, denominationally cooperative, zealous in missionary interests, and a friend to every pastor and church in the association."

Smithville church, Smithville, has been presented a Schulmerich Tower Music System by Deacon R. R. Herndon, and his family. Each evening and before the Sunday services the community enjoys familiar hymns from the church tower. A new ranch style, brick, seven-room pastor's home has just been completed. Plans are under way for beginning a new church building, April 1, 1952. Archie D. King is pastor.

Tom J. Logue, B.S.U. secretary, Memphis, reports a Thanksgiving breakfast held in the basement of Prescott Memorial church, across from the campus of Memphis State College. Toastmaster was James Hampton, of the University of Tennessee School of Medicine. Others on the program were Dr. R. Paul Caudill, inspirational speaker; Miss Nancy Coltharp, special music; Willie and Jessie Jones, two Negro boys who attend Bible class in a mission project sponsored by the B.S.U. of Memphis State College. Several students from foreign countries in Memphis schools were special guests.

COOPERATIVE PROGRAM

Annual Report of the Treasurer

We submit herewith the annual report of the Treasurer of the Tennessee Baptist Convention. This year, Tennessee Baptists have achieved three new high records in Cooperative Program giving: 1. Their gifts far exceed those of any previous year. 2. For the first time in their history their Cooperative Program gifts have exceeded the million and a half mark. 3. Their increase in Cooperative Program gifts exceeds the increase in any previous year.

Cooperative Program	\$1,641,321.47
Designated Gifts	362,929.58
Foundation Receipts	165,086.13
Retirement Receipts	112,786.48
Total Receipts	\$2,282,123.66

Increase in Cooperative Program receipts this year over the previous year amounted to \$197,019.76.

CHAS. W. POPE, Treasurer

	Cooperative Program	Designated and Reported	Foundation
Westel	72.38	36.73	
White Oak	24.00	25.00	
Whites Creek Association	60.00	30.31	19.00
		12.00	

BIG HATCHIE

Allen	114.80	80.00	50.00
Antioch	50.00	45.00	75.00
Ashport	14.02	5.20	
Brighton	2,537.25	512.10	60.00
Brownsville	6,421.17	1,371.55	1,035.68
Charleston	176.17	188.21	26.09
Covington	9,002.60	1,021.43	290.72
Elim	7.77	11.31	
Fellowship	26.26	10.00	28.46
Garland	666.83	178.04	12.86
Grace	223.16	29.33	22.20
Harmony	695.50	229.41	29.33
Henning	169.67	157.17	
Holly Grove	765.96	71.85	5.00
Keeling	57.67	56.00	16.70
Liberty	1,211.03	178.91	110.77
McKenzie Chapel	7.00		
Mt. Lebanon	16.05	22.75	
Oak Grove	1,091.00	241.49	1.50
Olive Branch	21.91		
Pleasant Grove	173.17	158.96	20.00
Ripley	2,463.24	1,066.45	
Salem	50.00	3.10	
Smyrna	220.61	109.83	10.13
Stanton	766.30	337.26	200.00
Walnut Grove	219.33	42.00	
Western Valley	6.00		
Whites Chapel	6.47		
Woodland	1,364.56	70.00	
Woodlawn	173.31	187.40	
Zion	275.00	75.92	
Association		7.55	100.00

BLED SOE

Bledsoe Creek	55.00	25.00	51.03
Chestnut Grove	40.00	14.14	17.00
Corum Hill	119.26		5.00
Cottontown		85.20	66.43
Czech	10.00		
Dixon Creek		100.00	
Fountain Head	10.90	16.10	75.00
Friendship	54.90	80.50	46.87
Gallatin	2,270.71	540.95	
Hartsville	752.00	236.08	166.64
Hillsdale		84.40	
Hopewell	187.42	98.10	75.61
Lafayette, First	381.30	59.14	5.00
Mitchellville	183.41	84.00	
New Hope	38.05	77.07	
Portland	2,120.67	274.16	823.00
Station Camp		10.00	
Westmoreland	20.20	16.70	10.00
Association		2.00	

BRADLEY

Antioch	25.00		
Bellefont	129.74	45.77	152.00
Bethel	28.97		
Big Spring	1,889.50	184.91	105.00
Blue Spring	50.86	66.29	
Calvary	369.57	53.96	
Candies Creek	262.91	15.76	
Cedar Spring	65.00	184.20	
Charleston	217.15	111.75	5.00
Cleveland, First	7,050.00	338.49	810.00
Clingan Ridge	1.80		6.22
Corinth	25.00	73.00	
Council		19.60	
East Cleveland	1.60		
Elkmont	.91		
Four Point	9.60		
Georgetown		40.81	
Goodwill	23.42	48.00	
Gum Spring	1.04		
High Point	10.00	6.17	
Lebanon	10.00	32.50	
Little Hopewell	2.83		
Macedonia	5.06	133.14	
Michigan Ave.	60.00	50.00	
Mt. Carmel	7.00	95.70	
New Friendship	160.38	42.35	
North Cleveland	316.25	33.75	
Oak Grove		12.00	
Philippi	50.00	54.23	150.00
Rutledge Memorial	50.00	30.00	
Thompson Spring	2.08		
Union	3.37		
Victory	133.68	1.50	
Waterville	50.79	27.54	
White Oak	9.65	16.50	

CAMPBELL

Alder Springs	4.22	7.50	
Anthras		3.00	
Avenue	260.28	65.64	
Bear Wallow	3.21	25.00	
Bethlehem	6.86	10.00	
Big Creek Gap	4.27	17.00	
Caryville	132.00	38.25	
Cedar Creek	1.84		
Cedar Hill	183.71	61.45	
Chaska	1.00		
Clinchmore	1.00	10.00	
Cumberland View	11.27	35.17	

	Cooperative Program	Designated and Reported	Foundation
BEECH RIVER			
Beacon	20.05	4.30	
Chapel Hill	10.12		
Cross Roads	14.00		
Darden		23.63	
Decaturville	5.00		
Franks Chapel	14.75		
Friendship	132.80		
Hinkle	47.50	21.25	
Huron		14.35	
Lexington, First	1,770.00	426.16	225.00
Mt. Ararat	25.00		
New Beech Grove	7.00		
New Fellowship	64.50		
New Hope		11.60	
New Prospect	15.10	5.00	
Parsons	2,573.38	403.72	240.00
Perryville	22.43	5.00	
Pine Grove	43.70	38.20	
Rock Hill	248.62	38.41	20.31
Saltillo	27.00		
Sardis	14.75	10.00	
Sardis Ridge		6.66	
Scotts Hill	82.50	26.30	
Standing Rock	1.00		
Tomlin Chapel	5.00		
Union	149.71	87.04	15.00
Wildersville	44.44	43.98	
Association		8.16	

	Cooperative Program	Designated and Reported	Foundation
BEULAH			
Alamo	125.00	26.00	100.00
Aldredge	110.00	10.32	
Bethel	65.00	25.00	
Beulah	263.06	184.88	
Cypress Creek	50.35		
Fairview		15.00	
Gibbs	8.19	47.00	10.00
Hornbeak	15.50	37.65	
Johnson Grove	151.00	213.90	
McConnell	253.74	94.45	
Macedonia	217.37	85.00	30.00
Martin, First	2,423.10	1,038.71	933.31

	Cooperative Program	Designated and Reported	Foundation
Mt. Moriah	32.58	18.71	
Mt. Olive	274.04	30.53	
Mt. Pelia	366.21	200.83	
New Concord	60.00	35.00	
New Home		102.34	
New Salem	820.81	541.23	25.00
Oak Grove	166.50		
Obion	44.29	174.29	5.80
Pleasant Grove		108.75	
Pleasant Hill No. 1		34.00	
Pleasant Hill No. 2		30.00	
Reelfoot	130.00	124.66	74.44
Ridgely	1,071.93	242.02	271.40
South Fulton	191.00	175.50	
Tiptonville	261.51	179.32	
Troy	144.79	68.81	
Union City, First	9,229.70	1,936.13	1,049.50
Union City, Second	387.85		
Walnut Log		7.00	
Woodland Mills	696.91	152.11	47.50
Wynnborg	28.15	84.58	50.00
Association			15.89

BIG EMORY

Antioch Mission	4.30		
Beech Park	283.05	120.65	
Bethel	22.00		
Bethlehem			
Big Emory	190.53		25.00
Caney Ford	27.00	118.85	
Cardiff		47.35	
Childs Memo.	188.11		
Clax Gap	8.04	26.64	
Crab Orchard	25.00	25.00	
Creston		5.00	
Crossville	2,013.16	480.87	600.94
Cumberland Homestead	144.00		
Daysville		15.00	
Dorton	134.98	25.49	
Elizabeth		50.00	
Emory Gap	5.00		
Emory Heights		100.00	
Emory River		11.52	
Eureka	186.50	141.02	
Fairview		7.00	
Friendly Kellytown	22.00	31.00	
Haileys Grove	35.85	50.85	
Kingston	1,005.61	248.06	15.00
Lakeview	25.00	154.00	
Liberty	336.46	72.05	175.00
Mahan	15.70		
Middle Creek	260.51	45.85	
Mossey Grove		12.00	
New Fairview		10.00	
Oakdale	1,214.24	84.52	
Oak Hill	137.79	126.78	
Orchard View		8.00	
Petros	312.48	130.00	
Pine Orchard	4.00	17.00	
Piney	112.30	25.00	
Pleasant Grove	81.63	71.59	45.00
Pond Grove	146.14	53.75	
Prospect		37.10	
Riggs	215.70	24.00	
Riverside	588.88	79.96	
Rockwood	5,490.88	158.24	251.00
Slate Springs Mission	1.78		
South Harriman	1,596.75	306.52	150.00
Sugar Grove		6.18	
Sunbright	25.00	25.97	
Swan Pond		48.10	
Trenton St.	7,564.84	679.15	50.00
Union		25.00	
Vandever	5.00		
Walnut Hill	633.48	341.53	71.00
Wartburg	231.05	172.78	200.00

A

SSOCIATION MINUTES

—may be secured from your own Baptist Press.

Dependable printing at money-saving prices.

Call 42-6594 or write us at 412 Demonbreun St., Nashville 3, Tennessee.

CURLEY PRINTING CO.

	Cooperative Program	Designated and Reported	Foundation
Mountain Creek	160.00	20.00	
Mountain View	11.03	45.00	
New Bethel	9.44		
New Liberty	32.25		
New Mt. Carmel		37.00	
North Market	53.65	72.10	
Northside	7,194.37	674.81	660.00
Oak Grove	3,504.70	369.64	
Oak Street	748.27	133.32	
Oakwood	29.70	335.26	2.00
Olive Street	20.00	15.00	
Ooltewah	1,048.00	240.15	
Parkers Gap	324.54	83.52	
Philadelphia	25.00	113.68	
Pilgrims Rest	9.73		
Pine Ridge	3.60	33.00	
Pleasant Grove	12.39	39.70	
Pleasant Hill		35.59	
Providence	97.00	14.44	
Red Bank		550.25	
Ridgedale	16,012.99	2,864.08	2,316.76
Ridgeview	1,380.00	203.01	
Rivercrest Chapel	515.09	43.85	
Shepherd	100.00	68.86	
Signal Hill	9.80	30.00	
Signal Mountain	310.04	116.60	
Silverdale	1,096.14	165.54	
Soddy, South		12.31	
South St. Elmo		10.00	
Spring Creek	1,651.32	138.15	9.00
St. Elmo	7,743.97	727.63	531.00
Suck Creek	333.49	20.00	
Summit	20.08	24.75	
Temple	21.48	38.16	
Tyner	286.00	140.69	15.25
Union Fork	31.40	2.50	
Welcome Valley	27.73		
White Oak	3,684.31	324.88	
Whiteside	50.00	121.25	
Woodland Heights	125.00	243.69	93.00
Woodland Park	8,328.42	914.04	1,212.00
Association	45.38	363.73	150.00

HARDEMAN

Bethlehem	56.77	15.25	
Bolivar	4,219.94	997.28	15.00
Center Point	12.00		
Cloverport	38.09		
Ebenezer	5.46	24.85	
Grand Junction	1,322.01	305.42	59.50
Hatchie	104.00	21.50	
Hebron		11.77	
Hickory Valley	43.00	33.00	
Hornsby	122.00	243.50	
Middleburg	94.46	90.46	3.00
Middleton	208.51	104.02	
Midway	36.50		
New Bethel	16.32		
New Union	51.69	59.64	
Parrans	207.82	95.00	
Piney Grove	52.55		
Pocahontas	19.21	3.00	
Porters Creek	17.50		
Rocky Springs	50.00		
Saulsberry	313.11	67.70	5.70
Silerton	100.81	11.25	
Toone	427.98	143.27	
West Memorial	25.00	10.00	
Whiteville	1,149.12	244.10	13.00
Association	26.00	12.00	

HIWASSEE

Cedar Fork	5.15		
Concord	20.00	14.00	
Eagle Furnace	34.15	30.00	18.00
Fellowship	29.00		
Hopewell	50.67	47.00	6.00
Mt. Zion		10.00	
Old Friendship			10.00
Ozone	30.00	32.00	
Salem	3.66		
Shiloh	92.42		28.00
Ten Mile	50.00	15.26	
Association		6.00	

HOLSTON

Antioch	660.19	91.65	5.00
Asbury	11.75	41.20	
Baileyton	106.50	75.74	
Bethany	33.12	197.20	
Bethel		55.00	
Beulah	137.50	124.43	
Bloomington		26.19	
Blountville	408.50	172.00	164.00
Bluff City	806.29	71.43	10.00
Bluff City, First	836.63	102.76	339.00
Boones Creek		43.50	
Buffalo Ridge	77.60	140.70	
Calvary "B"	3,114.57	262.37	212.00
Calvary "E"	1,560.80	524.27	185.00
Calvary "G"	2.00	12.00	
Calvary "JC"		43.96	
Calvary "K"	1,371.00	174.09	8.00
Cedar Creek		3.50	
Cedar Grove	177.92	210.65	
Central, JC	13,080.00	4,668.49	1,235.98
Cherokee	220.90	125.10	
Cherry Grove	5.00	21.00	
Chinquepin	1,207.00	62.00	
Clear Branch	5.00	105.95	
Clifton View	14.00		

	Cooperative Program	Designated and Reported	Foundation
Coffee Ridge		45.00	
Double Springs	273.92	50.35	
Enon	74.39	118.87	
Erwin, First	8,058.62	1,949.63	1,407.03
Erwin, Ninth Street	718.90	187.60	
Fall Branch	206.50	71.40	
Fall Creek	126.28	115.37	
Fall Street Chapel	11.10	35.12	
Flag Pond	139.72	15.00	
Fordtown	568.63	48.46	
Fort Robinson	132.92	4.75	
Glenwood	1,200.00	154.25	
Gravel Hill		2.63	
Gravelly Road Mission	22.29	28.51	
Greenville	10.00	17.00	7.30
Greenville, First	2,686.50	510.19	324.80
Greenville, Second		46.76	
Harmony	126.62	35.00	
Holston	87.28	125.77	
Holston Valley	32.00	53.22	
Hiulen Avenue Mission	60.00		
Island Road	2.00	4.05	
Jonesboro, First	4,318.61	967.45	9.18
Jonesboro, Second	5.21		
Kingsport, First	25,358.94	1,334.95	2,096.36
Litz Manor	382.00	35.38	20.00
Long Island	10.00		
Lovelace	10.10	43.40	
Lynn Garden	900.00	357.02	
Midway	193.95	75.38	201.17
Mill Creek	15.10	30.75	
Mountain View	84.82	68.88	
Mt. Holston		35.44	
Muddy Creek		23.72	
New Lebanon	104.60	102.75	
New Salem	23.00	5.00	
New Victory	263.97	205.38	
Oakdale	60.00	55.00	
Oak Glen	33.87	25.00	
Oak Grove	158.22	19.00	35.00
Oak Hill	330.81	249.40	
Pine Crest	960.54	80.36	29.00
Pleasant Grove	52.00	42.76	
River Bend	35.60	3.25	
Roan Hill	88.38		
Shady Grove		20.00	
Shallow Ford	247.42	80.00	
Snows Chapel	100.35	161.09	
Solomons	7.52	5.00	
Southside	157.40	36.45	
Springdale		.80	
State Line	440.96	19.46	
Sullivan	51.50	124.50	
Sulphur Springs	483.20	107.98	3.00
Summersville		75.00	
Sunnyside	125.00	46.61	
Sunrise		42.46	
Temple	1,918.87	204.48	589.96
Tennessee Avenue	60.46	90.55	
Unaka	867.14	416.40	150.00
Unicoi	29.00	16.42	
Union	173.00	55.78	
Vernon Heights		10.21	1.00
Virginia Avenue	2,179.94	129.00	
Walnut Grove		12.50	
Woodlawn	1,230.00	166.05	
Association		97.29	105.91

HOLSTON VALLEY

Beech Grove	24.35		
Bethel	10.00	10.55	
Big Creek		15.30	1.00
Caney Creek		18.33	
Cave Springs		10.00	
Choptack		205.18	
Church Hill	21.00	110.58	
Compromise		34.71	
Fairview		15.36	
Gills Chapel	197.00	20.30	
Henards Chapel	192.00	74.28	20.00
Hickory Cove	36.00	106.00	
Howes		5.00	
Independence	6.00		
Longs Bend		7.30	
Looneys Chapel	3.25	67.18	
Lyons Park Mission	8.65		
Maple Hill	33.98	10.00	
McClouds	19.16	25.00	
McPheeters Bend	1,053.22	197.68	760.00
Mooresburg	10.00		
Morrisetts Chapel	70.00		
Mt. Pleasant		13.50	
New Salem	60.00		
North Fork	10.00		
Oak Grove	20.00	65.00	10.00
Persia	48.12	75.40	
Prices Grove		25.00	
Providence	10.00	25.00	
Rogersville	3,492.08	1,278.22	281.50
Shady Grove	80.00	19.00	
Speedwell	42.00	6.00	
Surgoinsville	405.00	356.50	
Tunnell Hill	4.24	24.23	
Valley View	6.05		
Walkers		50.21	
Association		10.00	2.00

INDIAN CREEK

Bethel	32.10	18.00	
Bethlehem		25.32	
Cedar Grove		4.23	
Collinwood	21.86	6.60	
Flat Gap Mission		5.00	5.00

	Cooperative Program	Designated and Reported	Foundation
Green River		63.66	74.00
Hopewell			3.29
Kelleys Chapel			2.76
Leatherwood	14.00	29.13	15.60
Lutts	125.92	67.38	11.00
New Harmony	25.18		
Oak Ridge Mission	22.00	5.29	3.00
Olive Hill	8.20	9.92	7.87
Philadelphia	202.75	47.45	40.00
Pickwick Road Mission	7.19		
Savannah	421.36	95.87	10.39
Sharon	1.50	4.00	
Southside	33.59		
Turkey Creek	87.34	36.81	
Waynesboro	502.50	398.20	33.25
Zion	98.75		
Association			15.55

JEFFERSON

Beaver Creek	66.54		
Buffalo Grove	353.81	102.78	
Dandridge	376.52	250.75	128.95
Deep Springs	5.32	13.00	
Dumplin	1,042.45	126.95	
Flat Gap	229.38	93.36	35.00
French Broad	100.00		5.00
Good Hope	26.00		
Jefferson City, First	13,076.54	2,546.66	886.80
Mill Spring	869.01	12.20	
Mountain View	74.20	42.74	
Nances Grove	238.29	195.73	
New Hope	29.12		
New Market	932.61	75.14	
Northside	375.00	100.29	
Piedmont	1,021.33	44.32	5.00
Pleasant Grove "H"	136.99		
Pleasant Grove "P"	92.68	127.30	
Rocky Valley	113.39	31.00	
Talbott	144.27	111.00	
White Pine	1,445.84	158.34	25.00
Association		45.00	3.00

JUDSON

Bell	18.31		
Charlotte	121.69		
Fairview		21.00	
Harmony	10.00		
Maple Grove		7.50	
Mt. Zion		10.00	
New Hope	35.00	18.00	
Parkers Creek		4.36	
Pleasant Ridge	10.50		
Association	10.12		

KNOX

Alice Bell	701.12	100.38	
Arlington	11,370.35	1,970.78	1,825.00
Ball Camp	345.34	44.56	180.00
Beaumont Avenue	681.54	54.47	
Beaver Dam	1,275.24	68.73	209.86
Bell Avenue	13,071.17	568.69	747.50
Belmont Heights	574.00	168.29	13.45
Black Oak	575.75	215.68	181.45
Bon View	32.61	31.11	
Broadway	20,250.00	1,178.65	4,413.58
Calvary	1,741.55	213.57	
Central, Bearden	935.00	462.88	12.00
Central, Fountain City	18,612.60	1,753.81	1,760.00
Central View		7.25	
Churchwell Avenue	1,052.52	75.04	
City View	2,590.85	144.22	392.00
Clear Springs	106.70	97.32	5.00
Corryton	1,145.77	305.89	
Crichton	442.31	135.50	
Deaderick Avenue	2,336.00	366.81	
Ebenezer	11.48	50.00	
Elm Street	214.74	57.94	
Euclid Avenue	2,542.27	299.17	3.00
Fair Havens	210.01		
Fairview	728.88	87.09	
Fifth Avenue	20,748.37	6,106.69	4,273.68
Fort Sanders	1,273.59	129.15	
Fountain City, First	2,731.14	281.25	437.50
Gallabers	50.00	6.17	
Gayland Heights	150.00	66.75	

GOWNS
 • Pulpit and Choir •
 Headquarters for
RELIGIOUS SUPPLIES

Church Furniture • Stoles
 Embroideries • Vestments
 Hangings • Communion
 Sets • Altar Brass Goods

CATALOG ON REQUEST

National CHURCH GOODS SUPPLY COMPANY
 821 - 23 ARCH STREET, PHILADELPHIA 7, PA.

	Cooperative Program	Designated and Reported	Foundation
Gillespie Avenue	925.09	282.85	373.85
Glenwood	1,250.43	228.75	
Grace	254.10	124.34	
Grassy Valley	23.00	14.50	
Greenway	20.00		
Grove City	767.90	30.00	84.20
Grove Hill	33.00	7.00	
Highland	758.77	277.22	
Holston	70.00	97.00	
House Mountain		117.45	
Immanuel	1,361.71	223.50	25.00
Inskip	4,125.96	298.96	
Island Home	2,768.87	847.33	295.00
John Sevier	181.57	56.56	19.82
Knoxville, First	58,339.25	10,974.05	3,438.45
Lincoln Park	10,655.37	1,010.56	1,622.00
Linden Avenue		6.00	
Little Flat Creek	450.00	32.00	
Lonsdale	3,353.23	375.67	571.00
Loveland		49.60	
Lyons Creek	414.00	91.78	
Marble City	140.00	41.65	
Marbledale	100.00	41.25	
Mars Hill		83.17	35.50
Mascot	744.67	326.62	10.00
McCalla Avenue	5,419.44	248.31	5.00
Meridian	489.89	336.81	80.00
Middlebrook Heights	13.09	8.32	
Middlebrook Pike		9.52	
Mooreland	11.50		
Morgan		5.20	
Mt. Carmel	26.50	49.27	
Mt. Harmony	191.10	373.55	50.00
Mt. Olive	2,131.00	597.45	284.00
Mountain View	627.88	39.50	
New Hopewell	1,337.75	268.75	
North Hills	120.00		
North Knoxville		105.74	
Northside	117.72	52.22	
Norwood	6.50	4.67	
Oakwood	6,040.70	244.34	43.00
Oglewood	60.00		
Park City	13.50	27.00	
Park Lane	355.00	63.86	38.00
Piney Grove	629.88		
Powell	785.98	249.63	183.37
Ramsey Heights Mission	20.80		
Ridgedale	182.77	78.83	
Ridgeview	21.00	19.40	
Riverdale	1,337.70	215.60	180.00
Riverview	538.81	53.05	
Rocky Hill	125.30	70.39	
Roseberry	316.90	141.65	
Salem	1,103.16	125.65	200.00
Seven Islands		7.65	

	Cooperative Program	Designated and Reported	Foundation
Sevier Heights	2,920.00	767.33	345.00
Sharon	400.00	46.35	
Skyline Drive	510.45	119.15	
Smith Grove	25.88		
Smithwood	4,923.42	459.42	1,092.91
South Knoxville	7,945.75	819.20	700.00
Stony Point	70.15	12.90	9.00
Straw Plains	879.30	46.23	5.00
Sunny View	97.91		
Tarklin Valley		10.00	
Tennessee Avenue	949.22	141.81	149.00
Third Creek	198.57	390.87	
Thorn Grove	122.84	37.00	
Timothy Street Mission	6.83		
Union	21.51	125.86	
Unity	234.67	70.00	
Valley Grove	81.23	154.11	195.80
Valley Grove, Chapman Hwy.	933.21	246.41	79.00
Washington Avenue	390.86	34.89	
Washington Pike	3,127.22	168.30	255.00
West End	180.24	92.06	
West Lonsdale Association	50.00	153.28	716.07
			126.25

LAWRENCE

Blooming Grove	1.50	35.53	
Bonnertown	224.35	53.73	50.00
Brace	3.45	3.05	
Deerfield	27.21	18.30	10.00
Ethridge	58.43	25.53	
Five Points	79.36		13.75
Gum Springs	22.00	65.00	
Iron City	104.74	220.43	
Lawrenceburg	2,850.00	142.95	176.26
Leoma	69.66	34.10	27.25
Liberty Grove	62.23		
Loretto	18.72	68.27	
Macedonia	2.55		
Mars Hill	3.00	11.58	
Mt. Horeb	27.63	63.31	113.06
Oak Hill	18.02		
O K	7.30	32.50	
Park Grove	6.50	15.21	
Ramah		31.00	34.97
St. Joseph	10.00		
Summertown Association	28.28	50.71	84.53
			25.00

McMINN

Antioch		8.89	
Athens, First	20,468.31	1,149.13	3,497.00
Bethsadia		13.39	
Calhoun	58.25	33.00	
Calvary Missionary	32.98		20.36
Calvary (McMahan)	247.76	10.75	
Clear Springs		10.00	
Clear Water	20.00	119.58	40.00
Cog Hill	204.01	46.39	35.00
Conasauga	1.35		
Cottonport	54.04	4.00	
Double Springs	5.25	10.00	
Eastanallee	109.10	68.85	38.00
East Athens	1,405.98	157.44	1.20
East Etowah	4.30	21.92	40.00
East Niota	18.94	92.35	
Englewood	1,823.66	209.53	340.00
Etowah, First	4,421.49	890.65	405.00
Goodfield	692.95	110.54	
Good Springs	6.64	37.55	
Lakeview		25.00	
Lamontville		8.50	
Manilla Chapel	10.00		
Marshall Hill	12.18		
Mt. Harmony No. 2	3.87	13.00	113.00
Mt. Pisgah		15.56	
Mt. Verd	4.00		
New Bethel		8.22	
New Zion		25.00	
Niota, First	1,147.42	480.66	25.00
North Athens	921.03	104.66	278.64
North Etowah	1,082.47	150.42	95.00
Pond Hill	53.63		
Riceville	135.16	111.29	
Rocky Mount	3.00	7.20	
Rogers Creek	7.00		
Shiloh		13.71	
South Liberty		12.22	51.70
Union Grove No. 1			
Union Grove No. 2	78.00		7.66
Union McMinn			
Walnut Grove	10.00	2.25	
West View	60.00	107.25	113.00
Wildwood	150.00	74.20	25.00
Zion Hill		50.00	
Association	2.40	17.00	

McNAIRY

Adamsville	15.00	71.58	
Bethel	57.15	30.75	
Bethel Springs	111.30	35.07	
Chewalla	231.91	71.68	105.00
Clear Creek	153.54	25.53	
Ebenezer	5.00		
Falcon	20.00		
Good Hope	6.25	10.00	
Gravel Hill	611.30	91.52	135.53
Hopewell		26.25	
Lorraine	60.00		
Mt. Gilead	83.73		
Pleasant Site	1.00	6.07	

	Cooperative Program	Designated and Reported	Foundation
Ramer	70.11	12.86	
Selmer	1,423.05	278.93	50.00
West Shiloh Association	94.37		17.00

MADISON-CHESTER

Ararat	439.61	60.37	100.00
Beech Bluff	15.50	26.46	1.00
Beech Grove	15.56	59.56	
Bemis	3,802.75	987.36	
Bethel		50.00	
Bible Grove	7.00		
Cave Springs	6.20		
Clover Creek	550.67	100.69	
Cotton Grove	70.00	39.50	
East Laurel	335.15	69.97	
Englewood	323.87	20.75	
Enville	8.90	20.00	
Friendship	13.00	10.00	
Henderson	903.49	127.65	
Hill Crest Circle	308.01	22.16	
Jackson, Calvary	5,350.67	1,194.02	518.57
Jackson, First	12,420.76	3,655.41	9,579.60
Jackson, North	1,425.05	95.26	
Jackson, Royal Street	765.00	156.35	6.00
Jackson, West	11,672.91	2,913.85	1,145.35
Liberty Grove	505.15	37.00	
Madison	229.56	85.42	6.75
Malesus	938.62	230.08	
Maple Springs	306.07	257.76	
Mercer	503.22	77.12	
Mitchells Chapel	2.00	24.70	
Oakfield	198.90	62.17	
Palestine	1.50		
Parkburg	179.92	85.58	27.95
Parkview	2,918.09	251.76	42.85
Pinson	141.00	14.00	5.00
Pinson Mission	21.42		8.60
Pleasant Hill	157.33	8.00	
Pleasant Plains	300.00	66.33	6.83
Poplar Corner	7.52	80.75	
Poplar Heights	1,999.12	106.30	
Poplar Street Mission	6.23		
Spring Creek	175.00	115.67	
Unity	30.00	34.00	
Wards Grove	311.97	110.52	
Westover Association	590.23	429.68	81.84

MAURY

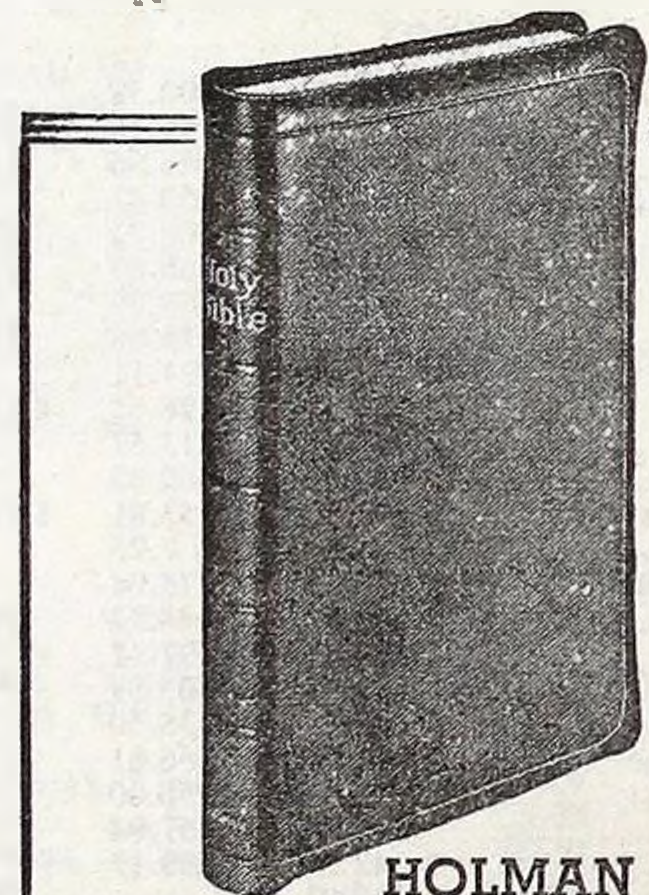
Allensville	40.00	10.50	
Blue Buck	36.00		
Calvary		8.50	
Centerville	1,118.13	242.42	260.98
Columbia, First	3,343.94	647.64	745.90
Columbia, Second	734.87	419.29	335.00
Cross Roads	100.00	20.00	39.32
Friendship	67.71	91.07	79.69
Hohenwald	412.00	80.69	44.00
Knob Creek	165.94	37.15	50.00
Lawrence Grove	45.00		18.98
Liberty	5.00	5.00	5.00
Linden	101.50	51.33	18.55
Lobelville Mission	15.96		
Maple Valley			17.00
Mission Chapel	30.00		
Mt. Pleasant	1,015.77	599.39	616.71
Rock Springs	117.32	26.19	39.58
Santa Fe	71.00	24.86	74.80
Theta	2.00	27.35	
Viola	112.00		
Wrigley Association	116.66		38.71
			25.00

MIDLAND

Atkin	110.00	15.42	
Bells Camp Ground	233.86	105.09	
Bishopville		17.00	
Calvary	349.50	30.00	
Cedar Grove		16.03	
Clear Springs	25.00		
Graveston	224.52	75.00	
Mt. Harmony		43.00	
New Hope		50.00	50.00
Pleasant Hill	83.59	16.75	
Solway	31.26	23.30	
Union	208.40	18.00	
Zion Hill Association	30.00	19.21	15.00

MULBERRY GAP

Big Hill	3.00		
Cedar Grove		1.10	
Chinquepin	2.25	7.17	
Clinch River		5.00	
Cobbs Chapel		8.50	8.50
Duck Creek	39.75	66.40	
Gap Chapel	2.00		
Grassy Springs		21.60	
Huberts Chapel	15.00	1.00	
Kyles Ford	86.12	70.55	5.00
Liberty	63.92	308.12	
Mulberry Gap	11.00	55.00	
New Hope		25.00	
New Life	19.55	12.00	
Oak Hill	4.00	10.00	
Pleasant Hill		12.51	
Prospect		1.00	1.90
Richardsons Creek		4.25	



**HOLMAN
VERSE REFERENCE BIBLE**

Red Letter—India Paper

A large print, small Bible with 60,000 references indented in the verses they serve • combined dictionary-concordance • pronouncing. 533 XRL—Persian Morocco, overlapping covers, leather lined, gold titles and edges. Price, \$12.00.

**HOLMAN INDIA PAPER
VERSE REFERENCE BIBLE**

• 60,000 references indented in verses they serve • Combined dictionary-concordance • pronouncing • Biblical Atlas—Maps • Presentation page • Family record pages • Gold titles and edges • King James Version.

512X—French Morocco . . \$8.50

BAPTIST BOOK STORE

Serving your State, Dist., Assn.

	Cooperative Program	Designated and Reported	Foundation		Cooperative Program	Designated and Reported	Foundation		Cooperative Program	Designated and Reported	Foundation
Rock Bridge		6.90		New Prospect	1.44			Warwick Chapel	55.88	42.00	
Sneedville	83.83	71.31		New River	47.61			Association	102.80	122.09	25.00
Spruce Pine	15.00	15.00		Norma	1.92			POLK			
Trent Valley	20.00	139.73		Oneida	1,105.17	235.20		Ball Play	2.12		
Valley View		24.50		Robbins	230.50	11.70		Beech Springs	27.03	20.00	
War Creek	8.58			Straight Fork	1.00			Benton, First	184.82	104.52	
Yellow Branch		5.00		Vine Street	19.00	82.00		Benton Station	65.89	46.03	
Association	4.28			Winfield	124.22			Bethlehem		6.41	
NASHVILLE				Association	1.85			Coletown	20.29	11.85	
Antioch	224.00	148.91	46.00	NEW SALEM				Cooksons Creek	2.00	31.45	
Ashland City	25.00	7.49	50.00	Baxter Mission	5.00	5.00		Corinth		5.91	
Bakers Grove	471.09	96.61		Brush Creek	421.01	184.61	14.00	Delano		47.00	100.00
Belmont	23,465.45	5,923.49	4,153.45	Buena Vista		91.00	29.34	Hiwassee Union	16.62	36.00	
Berry Field	227.25	43.44	15.00	Carthage	1,196.92	592.56	140.53	Isabella	9.40	35.00	
Berryville	84.00	15.00	31.00	Gordonsville Mission	5.37			Mine City	390.68	220.62	
Bordeaux	176.51	90.70	12.75	Hickman	159.12	72.30	103.20	Mountain View	1.50	25.00	
Calvary	2,110.82	89.20	140.50	Lancaster		7.60		Mt. Zion	130.00	241.61	5.00
Centennial	14.70	74.03	140.50	Nash Grove	33.45	5.00	60.00	Oak Grove	9.97	16.65	
Central	28.40	14.40		New Home	148.75	65.85	47.50	Old Ocoee	95.44	122.75	
Chapel	87.76	12.00		New Middleton	943.38	229.72	57.50	Pine Ridge Mission	2.11		
Dickson	489.25	129.52	20.00	Peyton Creek	130.96	118.77	133.69	Pleasant Grove	16.00		
Donelson	4,870.16	555.62	137.00	Plunketts		140.45		Shiloh	42.79	13.00	75.00
Due West Mission	12.16	8.00		Riddleton	72.50	36.26	19.00	Smyrna	3.25	20.00	
Eastland	7,847.09	1,120.25	673.50	Rome	75.39	69.32	119.31	Springtown	3.90		
Edgefield	4,152.80	1,064.43	902.00	South Carthage		9.10		Turtletown	2.66	31.00	
Ewing	25.00	20.97		Association		25.00		Welcome Valley	1.90		
Franklin	2,271.78	989.77	163.18	NOLICHUCKY				Wetmore	104.00	10.25	5.00
Freeland	404.55	27.23	50.00	Alpha	161.85	74.00		Zion	57.47	65.11	42.80
Gallatin Road		20.02		Bethel	355.92	86.91	100.00	Zion Hill	76.61	177.86	
Glendale	986.35	38.03		Beulah	134.90	104.80		Association		9.00	
Goodlettsville	4,796.68	116.67	876.16	Bibles Chapel	67.27	30.15		PROVIDENCE			
Grace	12,343.28	525.29	2,991.90	Big Springs Mission		20.00		Ballards Chapel	20.00	38.89	
Grandview	2,900.49	277.57	439.36	Brier Thicket	34.03	10.00		Beals		50.00	
Green Hill	161.23	180.09	298.90	Brown Springs	305.86	139.76	95.00	Bell Avenue		15.62	
Grubbs Memorial	916.97	69.33		Buffalo Trail Mission		10.00		Cave Creek	72.54	50.00	
Harpeth Heights	518.10	115.60	29.13	Bulls Gap	1,031.60	236.30	.53	Cedar Grove	13.26	44.35	
Harsh Chapel	1,110.65	241.92	275.00	Calvary		740.00	7.33	First Avenue	869.05	40.58	
Hendersonville	25.00	75.00	653.00	Catherine Nenny	60.03	22.12		Highland Park		117.12	
Hermitage	188.33	132.58	105.00	Cedar Creek	40.00	33.65		Jones Chapel		213.12	
Immanuel	8,701.78	2,385.02	616.20	Central	54.84	65.25		Lenoir City, First	12,693.78	457.00	285.15
Inglewood	8,812.50	1,581.34	829.85	Concord	323.21	84.21	22.00	Lenoir City, Second	120.00	8.48	
Ivy Chapel	439.22	153.06		Enterprise	25.00	33.46		Midway	797.51	111.53	
Joelton	406.00	32.50		Fairfield	9.00	12.10		Mt. Pleasant	8.00	24.00	
Judson	15,199.50	1,443.64	3,154.65	Fairview	485.94	145.88		New Midway		73.00	
Lockeland	11,368.91	711.35	498.40	Fernwood	12.00	7.05		New Providence	10.00	55.00	137.18
Madison	5,212.97	273.59	714.66	Grace	475.09	113.39		Oral	113.95	183.50	
Madison Heights		11.00		Holt		25.00		Paw Paw Plains		10.00	
Mill Creek		266.64		Kidwells Ridge	40.57	27.00		Pine Grove		20.00	
Nashville, First	52,520.61	6,502.52	1,908.68	Leadvale	7.71	52.80		Pleasant Hill	683.39	142.63	240.00
New Hope	612.50	115.69	5.00	Lebanon	170.40	11.66		Providence	2.42		
North Edgefield	232.50	103.24		Macedonia		27.00		Shady Grove		10.00	
North End	312.25	191.91	140.00	Montvue	129.00	123.49		Silver Ridge		16.04	
Old Hickory	8,712.50	371.17	988.00	Morristown, First	12,000.00	1,639.67	430.19	South Holston		48.00	
Park Avenue	8,296.01	685.72	586.21	Mountain Valley		10.30		Union Chapel		15.40	
Radnor	1,299.17	336.08	532.82	Mt. Zion	122.23	150.00	45.00	Vaughns Chapel		5.00	
Richland	150.46	69.72		Phillippi	2.00			West Broadway	22.50	357.35	
River Road	69.90			Pleasant Ridge	38.50			Zion Chapel	20.00	30.00	
Riverside	1,130.92	327.77	27.00	Pleasant View	25.00	34.93		RIVERSIDE			
Rosedale	50.00	34.41	9.00	Robertsons	12.15	10.00		Allardt	63.50	6.50	
Saturn Drive	47.71	65.75		Rocky Point	199.06	188.62	41.50	Allons	31.00	50.00	7.00
Seventh	1,528.01	214.05	45.50	Roe Junction		10.00		Byrdstown		20.19	12.00
Shelby Avenue	2,518.21	171.88	220.00	Russellville	237.57	323.79	30.00	Celina	203.46	46.01	18.00
Smith Springs	7.00	36.00	206.11	Statem Gap	18.77			Clarkrange	70.64	20.00	
Spring Hill	110.44			Thankful	33.10	49.37		Clear Creek	4.00		
Temple	783.71	273.20	79.00	Three Springs		20.00		Cliff Springs	.60		
Tennessee Home	1,776.84	431.77		Warrensburg	332.75	83.60	40.00	Columbia Hill	15.00		
Third	1,993.87	302.04	726.26	White Oak Grove	95.70	68.96		Davidson Mission	1.28		
Una	1,069.07	250.44	83.00	Whitesburg	145.35	265.63	145.00	Etter	50.00		
Union Hill	1,885.73	151.11	95.00	Witts	384.98	282.15	46.00	Fairview	1.26		
West Nashville	242.08	22.13		Association		69.60		Falling Springs	3.50		
Westwood	135.00	571.55		NORTHERN				Fellowship	1.73		
White Bluff	3.00			Carrs Branch		50.00		Fredonia		35.00	
Woodbine	161.90	212.76	5.00	Cedar Ford	167.25	513.50	7.50	Isolene	57.00		
Woodmont	20,343.11	460.04	1,515.00	Clear Branch	178.00	79.40		Jamestown	1,393.16	109.40	74.50
Woodmont Center Mission		19.22		Lily Grove	1.00			Livingston	59.66	8.50	
Association	7.95	334.99	20.00	Lone Mountain	53.45	10.00		Mayland	41.00	30.00	
NEW DUCK RIVER				Maynardville	48.04	110.00		Moodyville	32.95		
Bell Buckle	123.55	40.75	14.40	New Salem	2.69			Mountain View	1.68		
Big Springs Mission	192.52	23.04		NEW RIVER							
Charity	4.00		48.32	Antioch		11.00					
Cornersville	256.32	273.35	27.00	Bethlehem	12.50	7.60					
El Bethel	481.26	211.12	14.75	Black Creek Cross Roads	1.60						
Fosterville		59.85	30.21	Fairview	4.35	19.00					
Hannahs Gap	153.88	28.30	40.00	Glenmary	6.50						
Holts Corner	86.77	170.27	145.65	Huntsville	333.51	87.64					
Hurricane	14.75	49.17	9.58	Lone Mountain		20.00					
Lewisburg	6,232.33	533.35	1,500.00	Low Gap	91.03						
Longview	6.10	7.00		Mill Branch	1.28	15.00					
Mt. Lebanon	66.10	42.40		Mountain View	1.00	8.61					
New Bethel	204.76	22.61	2.00	New Haven	4.24						
New Hope	87.50	63.15	13.43								
North Fork	107.34	72.07	16.00								
Rover	349.92	68.45									
Shelbyville	2,989.02	283.92	489.00								
Shelbyville Mills	382.50	41.93	22.00								
Smyrna	117.49	85.96	2.00								
Wartrace	346.56	163.40	40.21								

Barnes' Notes — America's Favorite Bible Commentary
Over 2 Million Volumes Sold!

VOLUME ONE

Free!

You receive a gift of the first volume free when you order the complete set

OLD TESTAMENT \$41.00
13 Volumes

The Set NEW TESTAMENT \$33.50
11 Volumes

24 Vols. \$74.50

<input type="checkbox"/> Genesis I (Leupold).....	\$3.50	<input type="checkbox"/> Minor Prophets II (Pusey).....	\$3.50
<input type="checkbox"/> Genesis II (Leupold).....	3.50	<input type="checkbox"/> Matthew-Mark.....	3.00
<input type="checkbox"/> Job I.....	3.00	<input type="checkbox"/> Luke-John.....	3.00
<input type="checkbox"/> Job II.....	3.00	<input type="checkbox"/> Acts of the Apostles.....	3.00
<input type="checkbox"/> Psalms I.....	3.00	<input type="checkbox"/> Romans.....	3.00
<input type="checkbox"/> Psalms II.....	3.00	<input type="checkbox"/> I Corinthians.....	3.00
<input type="checkbox"/> Psalms III.....	3.00	<input type="checkbox"/> II Corinthians-Galatians.....	3.00
<input type="checkbox"/> Isaiah I.....	3.00	<input type="checkbox"/> Ephesians-Colossians.....	3.00
<input type="checkbox"/> Isaiah II.....	3.00	<input type="checkbox"/> Thessalonians-Philemon.....	3.00
<input type="checkbox"/> Daniel I.....	3.00	<input type="checkbox"/> Hebrews.....	3.00
<input type="checkbox"/> Daniel II.....	3.00	<input type="checkbox"/> James-Jude.....	3.00
<input type="checkbox"/> Minor Prophets I (Pusey).....	3.50	<input type="checkbox"/> Revelation.....	3.50

Order From
Your Favorite Bookseller, or
BAKER BOOK HOUSE, Grand Rapids 6, Michigan

	Cooperative Program	Designated and Reported	Foundation
Mt. Union	4.48	16.00	5.00
Muddy Pond	2.43		
Oakgrove	2.13		
Plateau	38.52		
Riverton	2.26		
Three Forks	13.27		
Vine Ridge	5.00	5.45	
Wilder Mission Association	1.22	8.45	

ROBERTSON

Barren Plains	491.50	198.73	348.76
Battle Creek	205.43		
Bethel	519.10	106.34	
Bethlehem	37.87	49.87	
Cedar Hill	364.30	91.85	16.50
Center Point	25.79	34.07	18.00
Duers Mill Mission	11.42		
Eastland Heights Mission		73.50	
Ebenezer	140.72	90.51	50.00
Flewellyn	18.50	29.27	
Grace	707.76	119.56	167.50
Greenbrier	2,543.92	187.60	625.80
Hopewell	1,794.84	384.25	168.51
Mt. Carmel	2,180.15	61.15	79.92
North Springfield	644.72	95.63	44.00
Oak Grove	1,411.98	262.83	110.67
Oakland	124.86	35.40	10.00
Orlinda	2,066.50	395.47	922.82
Pleasant Hill	34.04	94.56	165.03
Pleasant Valley	56.31	46.50	
Red River	258.60	155.78	80.28
Rock Springs	132.36	24.93	92.61
Springfield	7,276.53	1,031.75	737.25
White House	203.03	66.82	
Williams Chapel Association	104.34	21.05	50.00

SALEM

Auburn	600.00	280.27	46.00
Barren Fork		29.50	
Burt	104.81	23.88	100.05
Cave Springs	25.23	61.41	33.33
Center Hill		4.56	
Coopers	100.00	6.58	
Dowelltown		64.12	19.08
Dry Creek		30.00	10.70
Gath	375.60	23.14	115.34
Indian Creek Memorial		4.33	
Madison Street	287.00	41.13	4.57

	Cooperative Program	Designated and Reported	Foundation
Mt. Herman	40.00		9.44
Mt. Zion	128.28	18.60	
New Home		18.00	
New Hope		44.50	15.00
Pleasant View	14.05		
Salem	565.00	482.10	272.00
Smithville	415.00	125.46	179.93
Snow Hill	108.90		
Sycamore	6.50	52.39	
Upper Helton	60.70		
Whartons Springs		33.40	22.32
Wolf Creek	25.00	13.00	8.00
Woodbury Association	749.45	287.95	860.44
		3.89	

SEQUATCHIE VALLEY

Baptist Hill		4.82	
Dunlap	743.26	102.07	380.00
Ebenezer	120.00	61.73	
Ewtonville	206.33		
Griffith Creek	99.06	18.85	
Jasper	29.27	55.75	
Kimball	205.82	26.43	15.00
Lee Station		27.35	11.65
Little Hopewell		1.63	
Mountain View		19.32	20.00
Pikeville	130.65	36.01	
Richard City	447.29	60.95	10.00
Sequatchie	15.52		
South Pittsburg	3,423.42	419.50	150.00
Whitwell	585.93	62.21	

SEVIER

Alder Branch	391.93	206.81	207.00
Antioch	153.00		
Banner	16.76	11.28	
Beech Springs	593.46	36.31	50.00
Bethany		4.00	
Blowing Cave		5.00	
Boyd's Creek	510.46	101.60	60.32
DuPont	133.81	20.00	
French Broad Valley		17.50	50.00
Gatlinburg	1,015.13	359.01	150.38
Gists Creek	77.03		
Hendersons	10.85		
Hills Creek		27.55	
Jones Chapel	12.00	12.00	
Knob Creek	50.00	39.34	
Laurel Grove	32.04		
Lebanon	11.00		
Millican	49.13	81.80	
Mountain View	14.35		
New Era	60.00	35.00	
New Salem	52.45	11.00	
Oldhams		25.10	
Paw Paw Hollow		180.00	20.00
Pigeon Forge	116.29	81.85	18.00
Red Bank		24.00	
Richardsons Cove	8.00		
Roaring Fork		107.44	
Sevierville	3,685.46	669.08	274.15
Shady Grove		35.00	
Shiloh	61.00		6.00
Sims Chapel	17.70		
Valley View	40.00		
Walnut Grove		4.60	9.36
Wears Valley	45.00	135.00	
Williamsburg	12.05		
Zion Grove	7.42	55.20	
Zion Hill	105.34	33.61	
Association		50.63	

SHELBY

Airview	187.52		
Ardmore	2,223.86	418.55	
Arlington	154.00	52.70	40.00
Bartlett	1,534.38	245.03	
Barton Heights	65.00	224.05	
Bellevue	85,274.08	10,264.13	8,999.31
Berclair	3,451.66	273.49	308.01
Beverly Hills	450.38	89.96	
Big Creek	92.50	40.40	
Boulevard	16,389.76	982.35	1,348.48
Breedlove	225.01	65.75	
Brunswick	120.00	206.52	
Buntyn	688.51	1,351.90	20.85
Calvary	5,037.68	741.16	601.50
Capleville	567.98	46.04	
Central Avenue	7,150.00	736.37	821.00
Collierville	3,107.58	469.59	
Cordova	1,310.31	346.32	60.00
Eads	106.95	128.52	60.00
Eastland	129.91	110.36	50.04
Egypt	168.58	113.61	
Elliston Avenue	347.62	128.53	
Eudora	930.79	506.86	70.00
First Baptist Chapel	25.31		
Fisherville	57.00	244.73	
Flynn Avenue	56.75	15.10	
Forrest Hill	458.77	113.41	
Germantown	915.64	210.07	23.34
Glenview	113.93	4.50	
Highland Heights	11,600.00	1,047.12	2,423.00
Hollywood	1,415.60	359.58	
Kennedy Memorial	2,144.81	196.18	
La Belle	16,712.37	650.43	988.00
Lamar Heights	4,765.69	653.37	600.00
Leawood	2,001.07	65.63	
Levi	360.73	91.14	175.00
Longview Heights	2,652.37	152.59	23.85
Louisiana Street	1,372.13	148.99	

	Cooperative Program	Designated and Reported	Foundation
Lucy	140.84	33.60	
McLean Boulevard	3,436.35	1,368.40	2.00
McLean Chapel	837.93	94.38	
Malcomb Avenue	3,095.99	72.59	
Mallory Heights	2,923.00	109.86	
Memphis, First	39,290.68	4,142.11	
Merton Avenue	4,236.23	612.56	505.25
Millington	1,725.01	193.23	
Mt. Pisgah	352.35	16.95	
National Avenue	652.07	42.35	
Oak Lawn	342.43	87.40	
Park Avenue	878.41	239.31	4.00
Parkway	570.00		3.00
Poplar Avenue	2,027.48	95.83	
Prescott Memorial	14,557.24	1,749.41	1,857.01
Raleigh	2,690.85	213.55	473.00
Riverside	1,392.00	161.11	
Rugby Hills	201.26	9.40	
Sanga Mission		22.39	
Seventh Street	5,808.39	540.10	140.10
Shirley Park Chapel	448.28	127.97	6.42
Southland	535.84	102.12	
Speedway Terrace	5,850.00	3,052.62	950.00
Sylvan Heights	673.02	139.43	
Temple	42,896.36	2,613.24	3,600.00
Trinity	1,161.52	1,036.43	
Union Avenue	25,537.02	3,378.30	1,718.01
Wells Station Chapel		11.75	
White Haven	502.00	417.82	29.40
Whitten Memorial	142.13	93.34	
Winchester	453.67	122.67	
Woodstock Association	122.46	20.39	6.73
	11.74	3,329.43	

SOUTHWESTERN DISTRICT

Chalk Hill	138.33		
Eagle Creek	12.88		
Flatwoods	43.70	22.45	

STEWART

Big Rock	718.96	169.20	130.00
Carlisle		14.69	
Corinth	9.00	5.00	
Crocketts Creek		1.40	
Dover	505.06	192.29	
Model	360.21	85.47	
Nevils Creek	94.75	86.60	10.00
Oak Grove	10.00		
Pleasant Grove	4.11		
Stewart		3.00	
Tip Top	6.25		
Association		30.00	20.00

STOCKTON VALLEY

Pleasant View		25.00	
Seventy Six		5.00	

STONE

Algood Mission	58.18	5.00	
Bear Cove	5.00	31.53	
Bear Creek	1.03		
Brotherton	5.12	7.20	
Cane Creek		25.00	
Caney Fork	16.00	44.25	
Cedar Hill	50.00	7.40	7.53
Cookeville	2,468.00	840.10	1,005.00
Dillard Creek	4.00	3.50	
Dodsons	1.17		
Gainesboro	145.80	7.00	15.00
Hampton Cross Roads	102.41		
Hanging Limb	5.12		
Macedonia	4.00		4.00
Mill Creek	1.54	20.00	
Monterey	1,574.51	257.21	122.00
New Salem Mission	.52		
Poplar Grove	52.89	21.60	50.32
Poplar Springs	33.00		12.00
Rocky Point	1.62	4.00	
Sand Springs	4.50	30.00	61.25
Smith Chapel	1.42		
Steven Street	43.43	84.85	36.00
Thorn Hill	2.14		
Verble	5.00		
Westview	600.00	69.10	
Willite	15.15		
Woodcliff	3.00	5.39	12.00
Association	3.00	35.00	18.50

SWEETWATER

Antioch	1.30		
Beatys Chapel	2.00	8.00	
Blairland	80.95	32.45	
Cedar Valley	9.80		
Chestua	303.70	94.85	
Christianburg	140.90	26.75	
Citico		10.00	
Corinth	18.62	89.20	
Fairview		2.75	
Fairview Tabernacle	45.00	104.50	
Friendship		89.68	
Glenlock	14.43	8.00	
Holly Springs	16.00	2.16	
Island Creek	6.15		
Lees	10.00	4.46	
Loudon	1,493.18	244.62	225.00
Macedonia	22.00	4.00	
Madisonville	1,520.00	658.89	200.00
Millers	5.00		

The Best Help for
Sunday School Teachers!

**ROZELL'S
COMPLETE
LESSONS
1952**

(Fifth Annual Volume)

Lessons written out word for word within the framework of a careful outline, with full directions for teaching procedure!

Your Sunday School lessons for a year prepared by an expert for five cents a week!

Your money cheerfully refunded if you are not satisfied.

Written by a Baptist, Rev. Ray Rozell, Minister of Education, Broadway Baptist Church, Ft. Worth, Texas.

Not sold in Book Stores

Order Direct From

ROZELL AND COMPANY

Box 451, Ft. Worth, Texas

PRICE: \$2.50 Postpaid

Largest Percentage Tennessee Baptist Churches in Country

NASHVILLE, Tenn.—(BP)—Tennessee's open country Baptist churches numbered 1,663 in 1950, with 1,501 of them having a pastor, according to figures from the Department of Survey, Statistics and Information of the Sunday School Board.

Nearly 40 per cent of the pastors reported serving in their current church for more than one year, but less than two, while only 7.5 per cent had been in their churches less than six months. Another 24 per cent had served two years with the same congregation and 16 per cent from three to five years. More than five years' service was the record of 13 per cent of the pastors.

Rural church growth among Southern Baptists is more than holding its own when over 5 per cent of the pastors of 13,100 open country churches have served their present pastorate longer than ten years.

According to the 1950 statistics, 88 per cent of the 14,788 open country churches have a pastor. Only 10.4 per cent of the pastors have served the church less than six months and another 10 per cent have been with the same congregation three years or more.

In 1923, 22,043 rural churches were reported in a rural church survey. There are now 23,146 churches which would fall within the classification of rural according to that survey. Only 29.9 per cent of the churches—open country, village and town—reported a pastor living on the field in 1923 and 13,386 of the churches had less than 100 members.

Rural churches in 1950 reported 5,846 churches with fewer than 100 members and 95 per cent of the congregations own their own church houses. More than 95 per cent have Sunday schools and over half of them report an organized Training Union. More than half the churches reported a Vacation Bible School in 1950.

The 14,788 open country churches in the Southern Baptist Convention have more than 2,000,000 of the total membership.

Following a year and a half pastorate at the Eastland Heights mission of the Springfield church J. H. Smothers has accepted the pastorate of Prosperity church in Wilson county association. He welcomed 65 new members while at Eastland Heights mission. Of these 37 came by baptism.

BAPTISTRY Instantaneous Gas Water Heater 450 G.P.H.—20° Rise

Also furnishes hot water to church kitchen and rest rooms. Write for folders. Special discount to churches. Heaters for the home also.

LITTLE GIANT MFG. CO.
907—7th Dept. 67 Orange, Texas

Constant Reader More Than Fifty Years



W. T. WESCOAT

Wm. Thomas Wescoat of Milan, now in his 95th year, eagerly looks forward each week to getting his BAPTIST AND REFLECTOR, of which he has been a constant reader more than 50 years, starting when Dr. E. E. Folk was editor, who once visited in Mr. Wescoat's home.

Native of Weakley county, he was born September 12, 1857, and was converted at 14 in Wesley's Chapel Methodist church, uniting with Center Baptist church in Henry

county ten years later. He married Clemmie Highfill, December 20, 1881, who died in 1927.

He has served as a teacher in Sunday school from Beginner through Adult classes. For 60 years he has been a deacon and served 17 years on the executive committee of Western District association and was moderator of that body two years. Mr. Wescoat spends as much time reading and studying as his eyes will permit. He uses glasses only when reading and his hearing is good. He is still a devoted student of the Bible which he has read through many times. His favorite chapters are Isaiah 53 and I Corinthians 13. Mr. Wescoat, a farmer before retirement, now makes his home with his daughter, Mrs. Cynthia W. Crawford, at Milan.

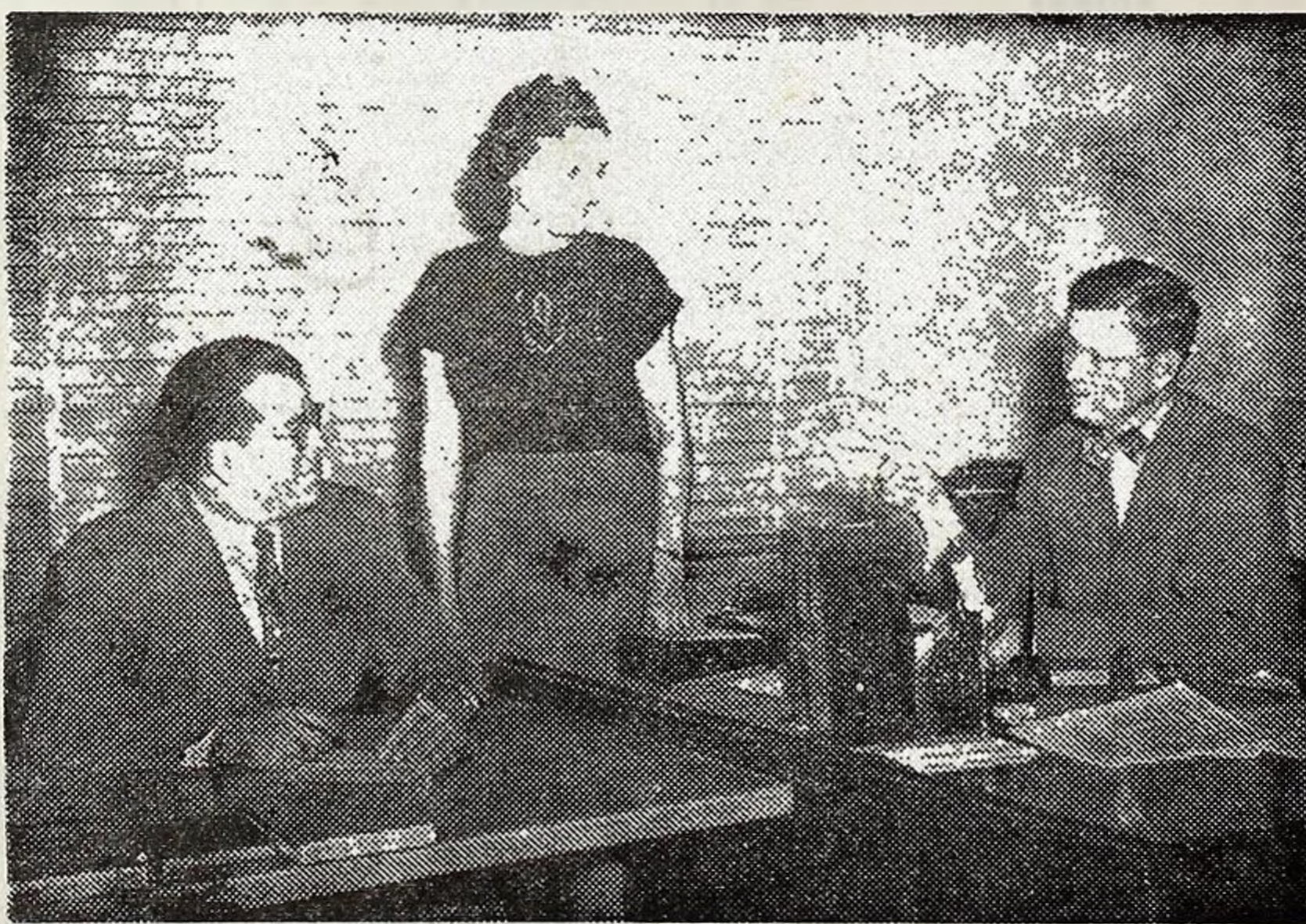
Every Baptist A Tither

Church Furniture
SOUTHERN DESK COMPANY



Selected hardwood pews in classical designs. Painstaking workmanship and sound construction identify pieces made by Southern Desk Company. Write for free illustrated literature.

SOUTHERN DESK COMPANY
HICKORY, NORTH CAROLINA



Rev. D. I. Young, Jr., of Magee, Miss., pastor of Beulah church in Simpson county becomes the 200th student to enroll in the Extension Department of Southern Baptist Seminaries.

Shown above is Mr. Young (left) being enrolled by Rev. Lee Gallman, Director of the Department, while Mrs. Gallman, acting office secretary, looks on.

The Extension Department is located in the Baptist Building in Jackson, Miss. It started operations August 1, and is maintained by Southern, New Orleans and Southwestern Seminaries. Students have been enrolled from 26 states and several foreign countries.

It is possible to obtain studies by correspondence or extension class work in Old and New Testament, Pastoral Ministers, Preaching, Religious Education, Church History, Counseling, Christian Missions, and History of the Bible.