

BAPTIST & REFLECTOR

JOURNAL OF
TENNESSEE BAPTIST
CONVENTION

"SPEAKING THE TRUTH IN LOVE"

VOLUME 120—NUMBER 8

THURSDAY, FEBRUARY 25, 1954

In This Issue

Worthy Way to
Memorialize

Holy Spirit and Church
In Evangelism

Memphis Hospital
Erecting New Addition

Treasurer's Receipts
Show Cooperative Program
Gains

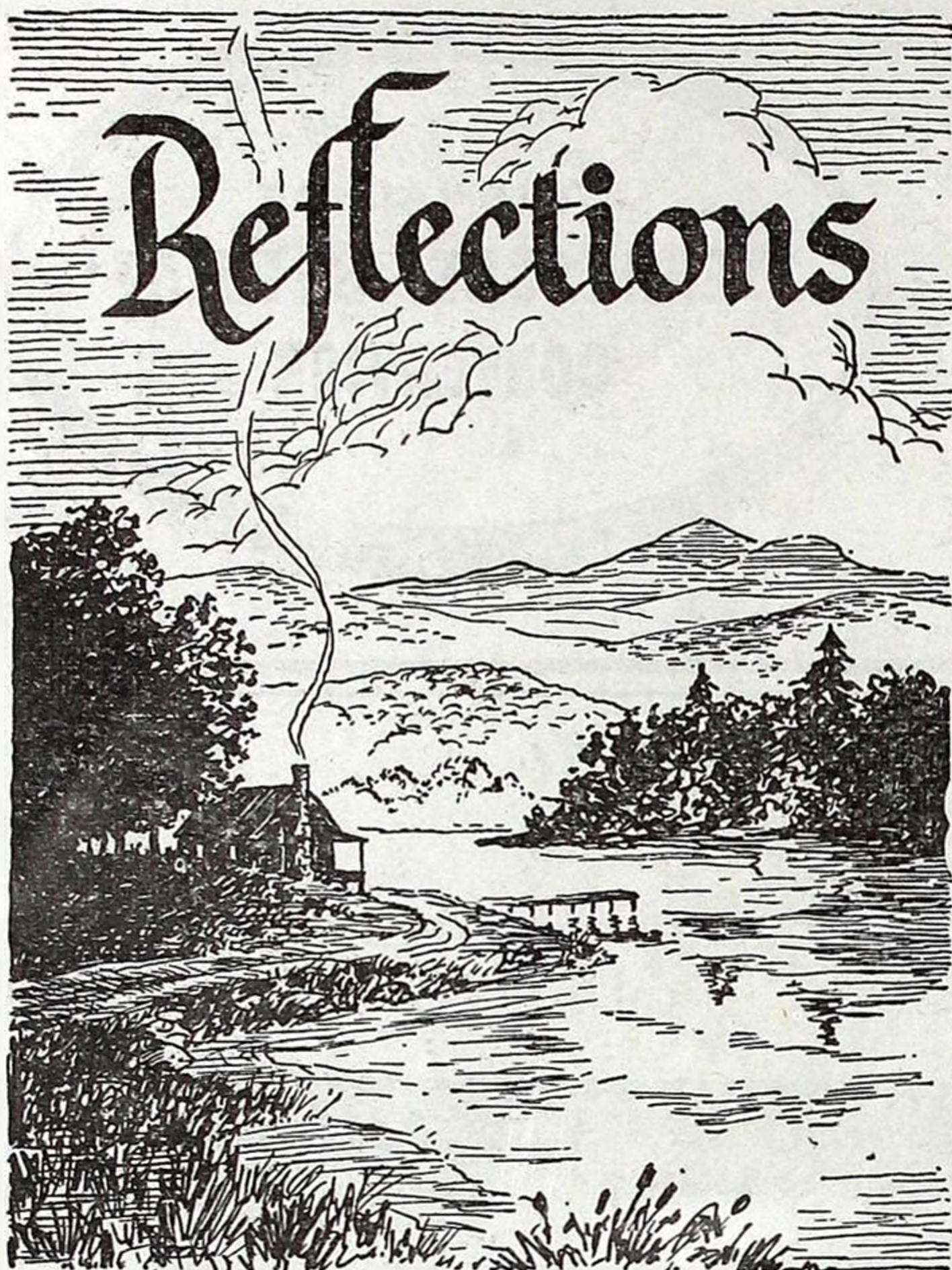
Departmental

News Briefs



Susie Yee enjoys the Kindergarten for Chinese children, El Paso, Texas—Home Board Photo.

Winning those of other races in our land is part of the concern of the Week of Prayer March 1-5 for Home Missions.



It used to take two to make a quarrel,
now it takes two to make a living.—
Money

The man who denounces the school system
for its failure to teach the simple but
important facts of statesmanship and his-
tory does not recognize the fact that his
own preoccupation with the World Series,
the Kentucky Derby, or the Rose Bowl
may have produced a pattern of interest
in youth that leaves only a slight residue
of interest for history and statesmanship.
—Mrs. John E. Hayes.

It is the task of a seminary not to say
what God should have said or what God
would say, but simply to chip away the
barnacles which accumulate about what
God *did* say.—Dr. Duke K. McCall,
president Southern Baptist Theological
Seminary.

It is said that if you hold a stick in front
of the foremost sheep in a flock that
files down a trail in the mountains, he
will jump it—and every sheep following
will jump when he reaches the spot,
even if the stick is removed. So are
many people mere unthinking imitators,
blind to facts and opportunities about
them.—Joseph Morris & St. Clair Adams,
It Can Be Done (Burt).

Give a politician some facts and he'll draw
his own confusions.—*Good Business*.

Religion is not a possession to keep, but
a blessing to share, a light to diffuse,
a life to communicate.—*Signs of the
Times*.

One of man's oldest delusions has been
that he could avoid the necessity of
working and saving by some money
trick—lowering its value, printing more
of it, changing lead to gold, burying gold
in caves or concrete dungeons. In every
instance these efforts have brought ruin.
—Bernard M. Baruch.

Observations

By
OWEN



Worthy Way To Memorialize

Last December the women of Wildwood Church in Chilhowee Association were getting ready to observe the Lottie Moon week of prayer and mission offering. Mrs. Jennie Johnson, a faithful member of this church, prepared her offering and sent it to the church. On Monday morning she quietly passed away. In memory of Mrs. Johnson, who had lived long and usefully, relatives and friends gave fifty dollars to be added to the offering as a memorial to her faith and loyalty to God. This brought the total Lottie Moon offering from Wildwood Church to \$94.41.

In Mrs. Johnson's small copy of the Gospel of Matthew the following was written in her hand: "*I professed faith in Christ, October 28, 1894, was baptized November 4, 1894, aged 15 years, 10 months, 25 days.*" —Jennie Harris. She was married to F. M. Johnson in 1909.

She had been a member of four churches: Ballards in Providence Association, where she was a leader in organization of the first Woman's Missionary Society of that church; Broadway in Knoxville; New Hope in Anderson County; and Wildwood Church.

Though well advanced in years when she moved into Wildwood community, she became a member of Wildwood Church of which she has been a devoted and faithful member. Throughout her life she was interested in missions and anxious that her life might count for Christ in her own community.

This very interesting entry is noted by her pastor, William F. Hall, Sr., in the back of her copy of the Gospel of Matthew. July 25, 1904. "*I went to Maryville today and heard Miss Annie Armstrong, the Executive Secretary of the W. M. U. talk. Oh how I did enjoy her address. Oh that I could do what she does.*"

Revise Upward

Here's something we are glad to correct. Baptisms in Hamilton County Association reported by us Feb. 11 as 2,934 have been revised upward in an additional report just received from Missionary Leslie Baumgartner of Chattanooga. The correct total is 3,004. A Southwide report just received from C. E. Matthews secretary of the Department of Evangelism of the Home Mission Board lists total baptisms in Tennessee for 1953 as 29,871 as against 29,728 for the previous year—a gain of 143. Total baptisms for churches reporting in the Southern Baptist Convention during 1953 was 361,835. In 1952 there were 354,384 baptisms. During the past year the increase

was 7,451 over the 1952 report. Seventeen out of the 24 states showed gains over the previous year in the number of baptisms.

Hope—If You Help

Through your help the Bible can be put into the hands of hungry-hearted peoples. The Book of Hope can be given, in their language, to the peoples escaping from behind the Iron Curtain and to many others who have long been denied the Scriptures.

Part of the missionary task is making the Bible available in the thousands of different tongues of the nations of the earth. That is the non-profit work of the American Bible Society. In 1952 it distributed throughout the world more than 13 million volumes of Scriptures. Today it is faced with requests for urgent needs on many fields, especially Japan, Korea, Hong Kong, India, Burma, Brazil and Germany.

Tennessee Baptists along with all Southern Baptists count it a privilege to share in the support of this work. We hope your church is having a worthy part.

Treasurer Charles W. Pope's quarterly report (see page nine) shows a gain of \$20,203.45 in Cooperative Program receipts over the same period last year. Note what your church gave. Some regular features have necessarily been omitted in this issue to carry the full report of receipts from the churches.

BAPTIST AND REFLECTOR

Belcourt at Sixteenth Ave., S. - Nashville
Official Publication of the Tennessee
Baptist Convention
CHARLES W. POPE, Executive Secretary

RICHARD N. OWEN.....Editor
FRED W. NOE.....Business Manager

Entered at Postoffice, Nashville, Tenn., as second-class matter as a weekly except Christmas week, under the act of March 3, 1879.

To effect change in address, give both old and new, also name of church and allow 2 weeks.

Single subscription \$2.00 per year in advance. Church budget rate \$1.20. Clubs of ten, \$1.50 each. Advertising rates upon request.

Cost of cuts must be paid by those submitting pictures for publication.

Space forbids full printing of Resolutions and Obituaries. News-value items in such may be used.

TENNESSEE BAPTIST PRESS, Inc., Nashville
DIRECTORS: Edwin E. Deusner, pres., W. L. Stigler, v. pres., W. Alvis Strickland, sec'y., Wallace Carrier, B. Frank Collins, Ray F. Dykes, W. M. Martin, T. C. Meador, D. P. McFarland.

The Holy Spirit and the Church in Evangelism

CHARLES W. POPE

The coveted word in revivals is "Power;" "power to preach the Gospel, power in prayer, power to win the lost in personal soul-winning efforts." Any revival which is accompanied by great power will be a great revival, and without power it will be a formal failure. The measure of the success of any revival will be the measure of the power of God upon it. The brilliant preacher, Apollos, at Ephesus was "mighty in the Scriptures," and "learned." But eloquent, learned, courageous, Scriptural Apollos had no power, because he knew nothing about the Holy Spirit. The blundering fisherman, Peter, was worth a thousand of him, because he was clothed with a strange irresistible power. Pentecost with its three thousand converts in one day was not the result of Peter's brilliant preaching, but the power of the Holy Spirit which was upon him.

In their desire for spiritual power men have sometimes condemned organization and methods as actual hindrances to the acquisition and use of the power of the Holy Spirit. A common statement of such people is "The early church had power without organization, and we have organization without power." It is an unfortunate statement because it assumes that organization is the antithesis of spiritual power. It is a significant fact that the age of the Holy Spirit is also the dispensation of the Church. The Church is a Divine organization, and the Holy Spirit is Divine Power. The church and the Holy Spirit are inter-dependent upon each other. The church is the only thing which Jesus organized while on earth; it is the only organization which the Holy Spirit uses in His work on earth, and the church is the only organization which depends upon the Holy Spirit for its power to operate. Banks depend upon money for their financial power; schools depend upon education for their intellectual power; and human governments depend upon armies and navies and finances and politics for their military, economic and political power. But a New Testament church depends uniquely upon the unique power of the Holy Spirit for its power to promote the work of the Kingdom of Heaven. The Holy Spirit has no organization except the church on which He can depend, and the church has no power except the power of the Holy Spirit. They are inter-dependent. A Divine Power must

have a Divine organization through which to function. Both are necessary at the same moment.

In the appropriation of electricity for lights and power two elements are necessary: first, a system of wires forming a circuit, and second, an electric current. Both are necessary. Neither is sufficient without the other. No matter how much power there is in the dynamo, without a correct system of wiring we can have no power. And no matter how perfect may be the system of wiring, without the electric current there is no light nor power. Redeemed souls constituting the church make up the medium which the Holy Spirit uses for proclaiming the truth and redeeming lost souls. The church is the human agency, the Holy Spirit is the Divine power. They are the human and Divine aspects in the Divine plan of salvation.

A revival may fail for the lack of proper and adequate organization and method. The Spirit may be present but the pastor and church members do not visit the unsaved, they bear no personal testimony to a yearning "Nicodemus" eager to know firsthand the deep truths about the new birth. They have no time for the "Samaritan Women" with their checkered romances who thirst for the living waters of eternal life; they have no answers for trembling jailors whose lost souls cry out, "What must I do to be saved?" The Spirit was ready and lost souls were waiting; but the Holy Spirit had no human feet to take Him into the homes of squalor and sin; He had no human tongue to "Tell what great things the Lord had done for them." The church had a Sunday school and Training Union and Brotherhood and Women's Missionary Society and a group of deacons, but the Holy Spirit could not use them because they were not available. And the revival failed.

A church may have and use its splendid organization and still have only mediocre success because it has no power of the Holy Spirit. Such a church may organize its Sunday school with its various departments and classes, it may mobilize its church members who have been trained in its Training Union; it may use its Brotherhood and its women to make various calls and visits and still fail in its revival efforts. Such a church must remember that all its organizations and methods are impotent

Roy Greene Urges Churches Send Pastors to London Meet

One of the most important meetings of Baptists, from a missionary point of view, is that of the Baptist World Alliance that meets about every four years. The last meeting was held in Cleveland, Ohio and the next one will be in the summer of 1955 in London, England. Those who are able to attend these meetings receive inspiration and missionary vision that cannot be evaluated. Especially is this true when the meeting takes the messengers from their own country into another country.

In this age, when we are so vitally linked with all of the world, many great businesses in our country are finding it profitable to send their representatives to international conferences.

We believe that every church that is able to do so and that has a pastor who has proved himself through the years should begin to make plans now to send that pastor to the Baptist World Alliance in London in 1955. With the all too busy schedule of pastors and churches, it is important that everything be planned well in advance. For instance, if a pastor knew that his church was going to send him to the Baptist World Alliance in 1955, that pastor would probably not schedule as many revivals because of the time that he would be gone from his church field and the entire local program of the church might be planned differently if the pastor knew that he would be going to the London meeting.

If any church plans to do this for her pastor, the vote should be taken in the near future in order that plans may be made in advance. The cost of this could be included in the budget for 1955; some prosperous layman might take it upon himself to send his pastor, or, it might be financed by a special offering. It would take very little from each member of a large church to send a pastor to this important meeting.

—A Roy Greene, President, Tennessee Baptist Convention.

and powerless without the power of God's spirit. Samson when he violated his covenant with God had the same giant muscular body, but he was as weak as any other man, because "He wist not that the spirit of the Lord had departed from him." Let us plan and organize and work, but let us remember that victory is "Not by might, nor by power, but by my Spirit saith the Lord." "Without me ye can do nothing." All our visits and all our arguments cannot convict one lost soul. Work without the Spirit is just as dead as faith without works. When the resurrected Christ stood before his disciples he breathed upon them and said, "Receive ye the Holy Spirit." And "As my Father hath sent me even so send I you." The Holy Spirit is the breath of God upon his churches—power-filled organized churches going forth on the same mission which the Father sent Jesus to perform, for "The Son of man is come to seek and to save that which was lost."

Urges Families Attend Church Together

CINCINNATI, O.—(RNS)—Whether whole-family church attendance should be encouraged, or the youngsters secluded in the church building for a separate program, created brisk discussion in a lay section meeting of the National Council of Churches' Christian education division sessions here.

Family attendance should be encouraged, definitely, said Dr. Lee J. Gable, professor of Christian education at the seminary of the Evangelical and Reformed Church in Lancaster, Pa.

Moreover, he believes more churches should think seriously about the entire family attending services as a unit even if it is necessary to redesign the services.

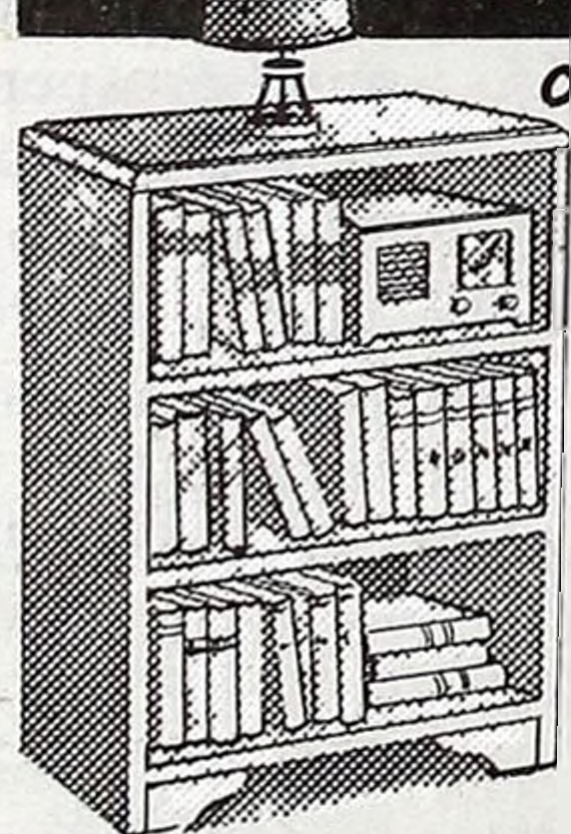
"If we believe that the family is the primary unit in Christian nurture, then worship by family groups makes good sense," he said.

Seeks Religious Freedom Stamp

WASHINGTON, D. C.—(RNS)—A resolution calling for the Post Office Department to issue a stamp symbolizing America's belief in freedom of religion has been introduced in the House.

Rep. Oliver P. Bolton (R-Ohio), the sponsor, said that postage stamps should be provided for use on overseas mail that tell something of America's belief in religious and political freedom.

FACTORY CLEARANCE SALE! Brand New Bookcases



only \$5.95 ea!

36" High 24" Wide
3 Shelves

Other Sizes Available:

Height	Width	Shelves	Price
36"	30"	3	\$ 7.95
36"	36"	3	9.95
48"	24"	4	8.95
48"	30"	4	10.95
48"	36"	4	12.95

Your Choice of

Beautiful Finishes: MAPLE, WALNUT,
MAHOGANY or BLONDE NATURAL

These are factory seconds with almost invisible imperfections but the value is terrific!

Extremely sturdy construction, SOLID heavy select western lumber throughout, beautifully finished for den, office or living-room. Ideal for books, toys, encyclopedia, etc...

Shipped completely assembled, ready to unpack and use. Money back AT ONCE if you are not thoroughly delighted. Prompt delivery.

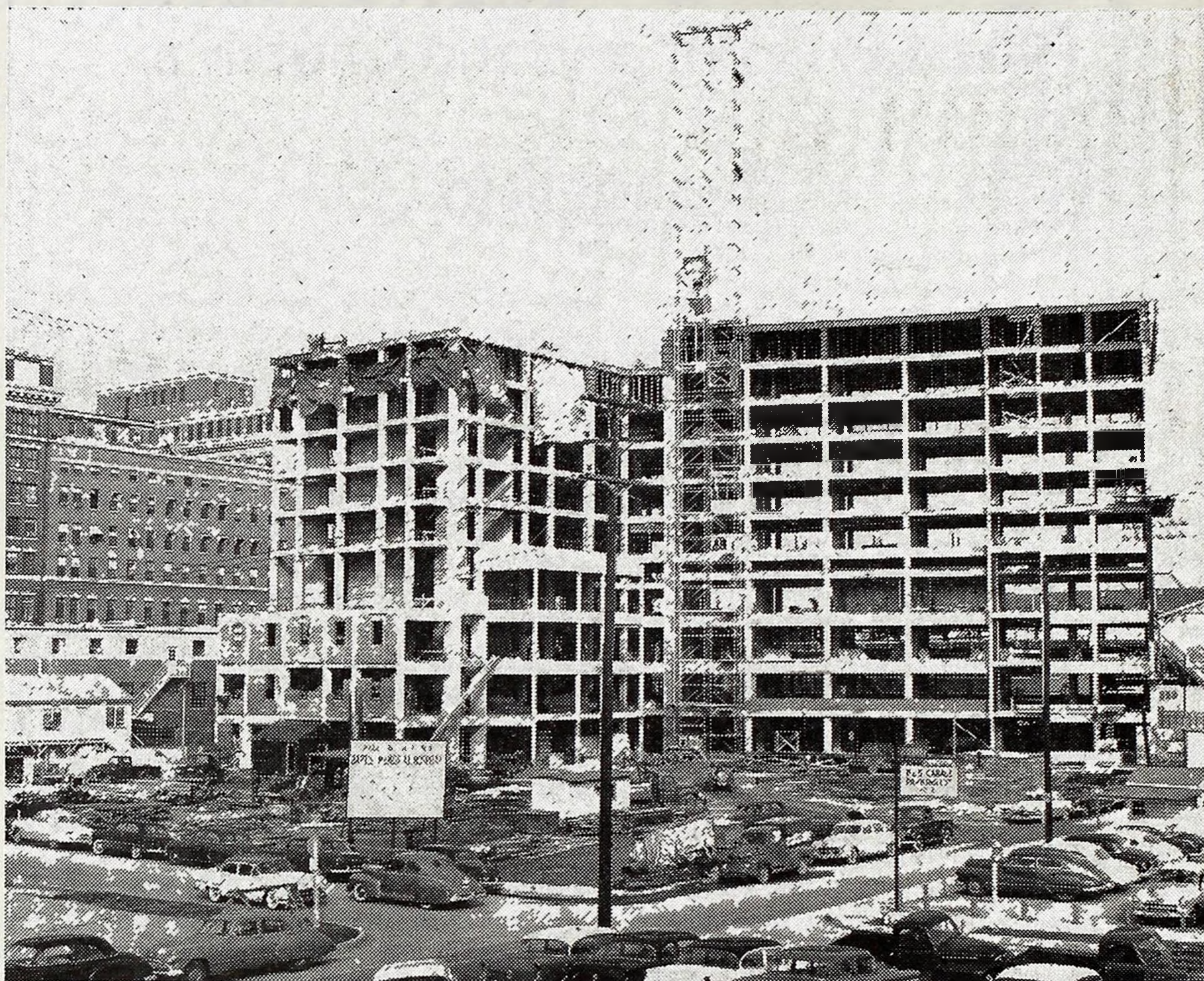
FREE DELIVERY ANYWHERE on orders of two or more. Send check or money order. Order one, two, or a dozen!

SOUTHLAND BOOK CO.

1111 Hord Street

Dallas, Texas

Memphis Hospital Erecting New Building



Baptist Memorial Hospital, Memphis, Launches Drive for Funds to Finish Construction

Baptist Memorial Hospital, Memphis, opened a community-wide drive for 1½ million dollars on January 28. This amount is being sought to complete the badly needed 13-story Madison-East addition, construction on which is now 20% completed.

The new addition to Baptist Memorial Hospital will cost 6 million dollars. One million dollars was raised through public subscription in 1951. The hospital is pouring its entire assets (raised through subsidiaries like the drugstore, garage, etc.) of one million dollars into the building fund and borrowing 2½ million, the maximum indebtedness which the hospital can undergo, according to an article in the hospital's *Baptiscope* of January, 1954. The remaining 1½ million dollars must come from gifts if the new building is to be completed. Solicitation will begin outside the hospital April 1.

The urgent need for this new addition is noted from the fact that the patient count climbed to 584 on January 19, reaching the saturation point. A record high of 145 operations were performed in the hospital in a three-day period.

The new building will be modern in every detail and will add 450 additional rooms, bringing the total capacity to 800 making Baptist Memorial Hospital the largest private hospital in the South. The new addition will be air-conditioned throughout, and will have private rooms

only, with at least a half-bath in every room. Plans call for individual control of the cooling and heating system, intercommunication with the nursing station, and phone and radio in each room.

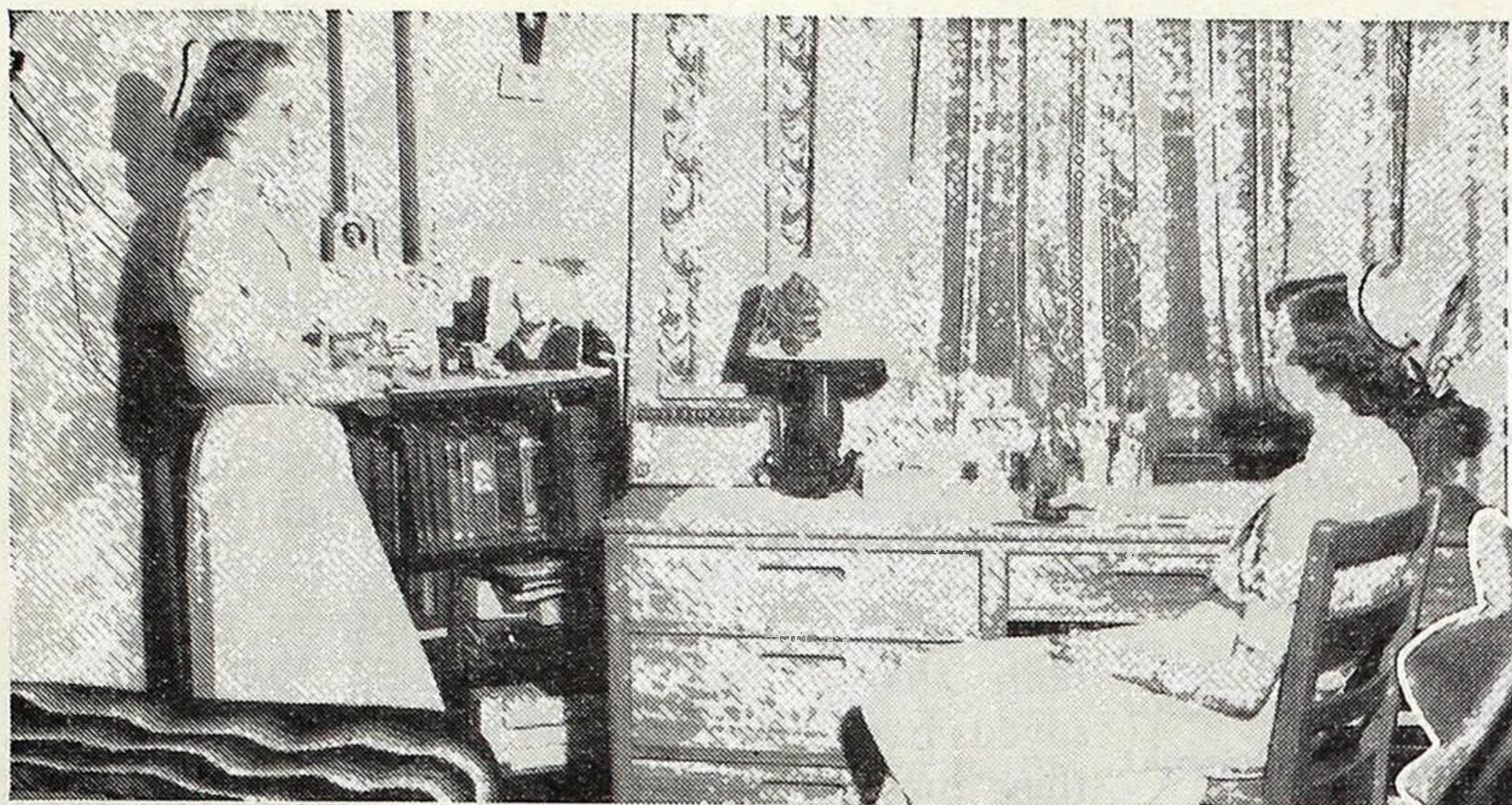
There will be additional space for departments now crowded in the present building.

Construction is ahead of schedule despite extreme cold weather hindering workmen on the outside of the building. Forms are now being poured for the tenth floor of the 13-floor addition. Memphis is probably in greater need of hospital beds than any city in Tennessee.

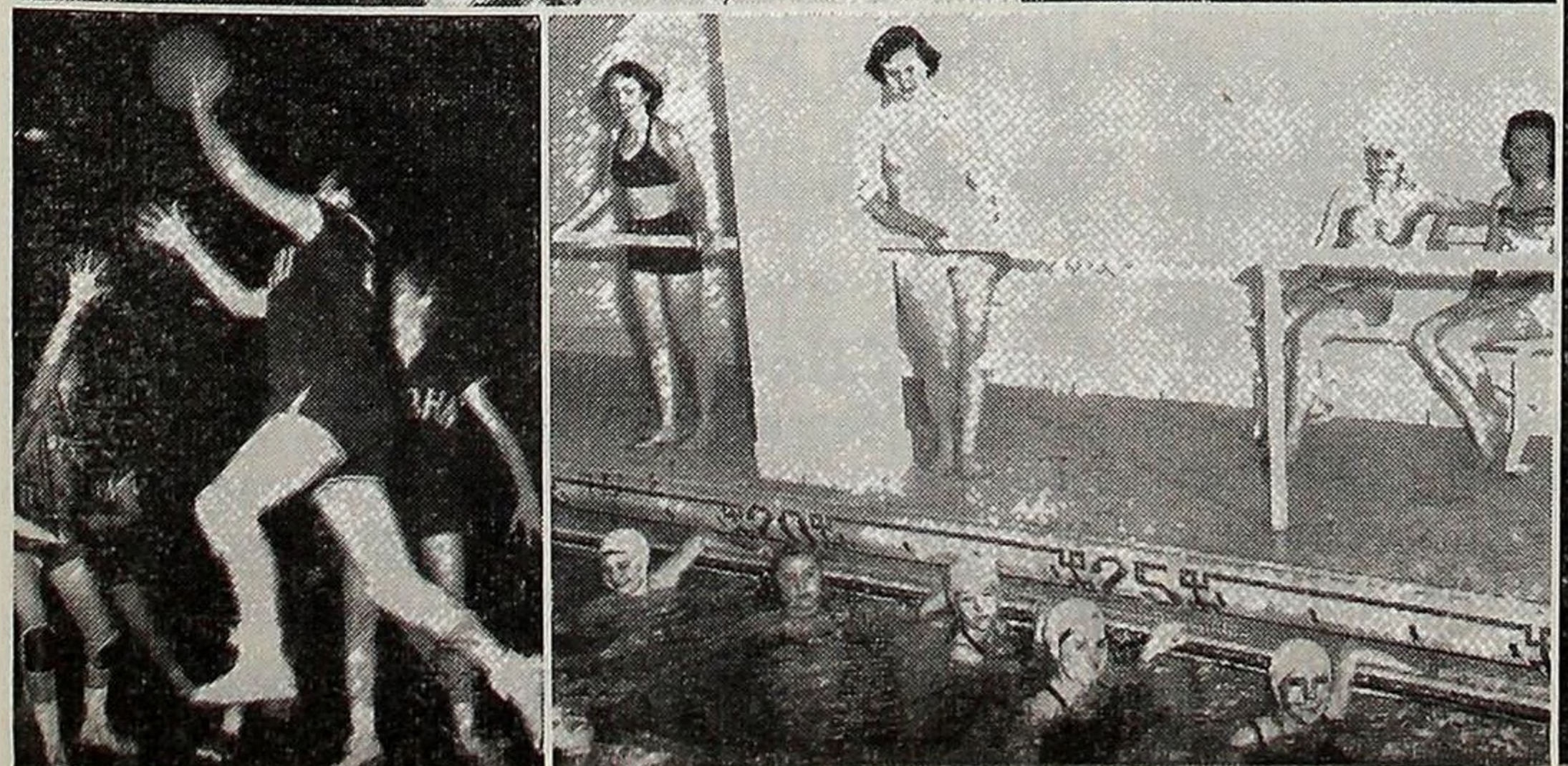
Clay Lambdin Dies

Rev. Clay Lambdin of Rutledge was stricken Saturday, February 13 and died while being carried to a hospital in Jefferson City. Funeral services were conducted on Monday, February 15. He was a brother of Dr. J. E. Lambdin of Nashville, and at the time of his death was pastor of the family's old home church, Sunrise Church in Grainger County Association of which Bro. Clay Lambdin was moderator. He was a faithful preacher, pastor and leader and had served a number of churches in that area.

Four Tennessee Baptists enrolled in New Orleans Seminary recently for the third term. William E. Bailey (Memphis), Dr. Barbara Hasty (Knoxville), Claude E. Moorfield, Jr. (Memphis), and Mrs. Henry W. Stamey (Chattanooga).



you will enjoy nursing!



You will enjoy the satisfying opportunity to serve humanity in this noble profession.

You will enjoy the social and recreational life afforded you in Baptist Memorial Hospital's cheerful and comfortable student dormitories.

You will enjoy the satisfaction of knowing that you are preparing yourself for an interesting career of service to others with an assured income for life. Yes, you'll enjoy nursing.

Baptist Memorial Hospital

Memphis, Tennessee

Mail this coupon today! Next class begins March 17

SCHOOL OF NURSING
Baptist Memorial Hospital
Memphis, Tenn.

Please send me your Nursing School Catalog

Name _____

Address _____

City _____ State _____

Next Sunday's Lesson

by O. L. RIVES, Professor of Religious Education, Carson-Newman College

Lessons based on International Sunday School Lessons; the International Bible Lesson for Christian Training, copyrighted by International Council of Religious Education

TEXTS: John 10 (Larger)—John 10:1-11 (Printed)—John 10:27 (Golden).

The Good Shepherd

An excellent approach for this lesson would be to read and ponder the Shepherd Psalm (Ps. 23). This, together with the first thirty verses of the tenth chapter of John's Gospel, may be regarded as rather complete materials dealing with the topic suggested above. Without considering the teachings of the Shepherd Psalm, let us note some items that appear in John's account of the Good Shepherd.

Leader of the Flock (vv. 1-6)

During the years immediately preceding and during the second World War we heard much about this concept of Leader. The Germans, for instance, referred to Adolph Hitler as their "leader." The same was true with the Italians when they spoke of Mussolini. These men, at least for a time, enjoyed the esteem, often amounting to adoration, of their peoples. Here in America, for a great many, the same could be said concerning Franklin D. Roosevelt. But mere human leaders often disappoint and leave more suffering than blessing following their meteoric careers.

The Lord Jesus Christ, however, was and is the Great Leader who leads men in the right direction both for this life and for the life to come.

Door of the Fold (vv. 7-9)

The picture, here, is of the shepherd placing his own body in the opening of the fold so that it in reality becomes the door of the same. And this is exactly what Jesus did while on the earth. He placed His own precious body on the Cross, exposing it willingly and lovingly to the cruelty of His enemies, in order to make possible the safety of all those who would place their trust in Him as the Shepherd of their eternal souls; thus enabling them to "be saved" and to "go in and out" and to "find pasture." For the Christian, accordingly, there is salvation and freedom and sustenance in Christ.

Giver of the Life (vv. 10-13)

This is the Abounding Life. Our Lord intends that His sheep or followers shall have the full and complete life both here and hereafter. When this is seen, asceticism for its own sake is ruled out. The same is true regarding licentiousness. The life that Jesus would have us to live is one of deep and abiding faith in Him as well as trust in our fellowman; of achievement amidst joy amidst sorrow; of achievement amidst defeat; of purity amidst defilement; of hope amidst despair; and of calm amidst storms. It begins when the person repents of sin and commits himself without reservation into Jesus' care for safety and service and salvation. It continues forever.

Knower of the Father (vv. 14-18)

Because Jesus knew the Father so completely, thus doing the Father's will perfectly, He could know His sheep so thoroughly. This knowledge, as these verses clearly imply, would lead Him to the Cross.

Divider of the People (vv. 19-25)

The true and good shepherd must stand so as to divide his sheep from the goats. Jesus appears in this role in these verses. While He would have all men to become His sheep, the effect of His teaching was then and still is divisive. Only a miracle can make a sheep out of a goat, but He



Sunday School

JESSE DANIEL, Secretary

Reach the Second Half-Million In April

GAINER E. BRYAN, JR., Baptist Sunday School Board

Final victory in the crusade for "A Million More in '54" must be achieved in the time that remains before July 1. Few additional gains can be scored in this Sunday school year after that date.

April, the second "Half-Million Month," therefore, is the crucial month in the success of the campaign both in your church and in the denomination as whole. Complete your plans for an all-out April effort that will put your church over the top.

Four suggestions are:

STUDY *The Ministry of Visitation* during the week of March 29-April 2. This greatly needed, long awaited new book by John T. Sisemore will be available in Baptist Book Stores March 1.

USE your church bulletin to promote the study of *The Ministry of Visitation*. You may order a free mat of the cover of the book by sending a postal card to Southern Baptist Mat Service, 127 9th Ave., N., Nashville 3, Tenn.

SET April net gain enrolment goals for all classes and departments.

PROMOTE intensive visitation for all of April.

CHECK each week to make sure goals are being reached.

A prayerful study of visitation by your workers during the week of March 29-April 2 will not only pave the way for final success in the "Million More" campaign; it will have permanent value for your church.

Visitation is the Christian's way of carrying on the work of Christ who said, "For the Son of Man is come to seek and to save that which was lost" (Luke 19:10).

possesses that power. It is this divisive characteristic that follows His teaching that He had in mind on another occasion (see Matthew 10:34, 35).

Preserver of the Believer (vv. 26-30)

The theologians have not yet agreed upon the term involved here. Is it the final "perseverance" or "preservation" of the saints? As a matter of fact, the Scriptures teach both alike. Some one has said that the saved have been preserved in order that they may persevere. Some other one has said that the saved are to persevere as if the final outcome depended upon such perseverance, but that they are also to trust in Christ for preservation as if the final outcome depended upon such trust. Jesus clearly says, in these verses, that the safety of the Believer is as solid and secure as He is solid and secure. Further, He ground such preservation in God's keeping power. Those who question such security are, in reality, questioning God's love and power. And who would presume to do this, knowingly?

Visitation is the way to show a lost or unaffected person that another person cares, a church cares, God cares. Visitation wins.

We must have nothing short of victory in the crusade for "A Million More in '54". Use April "Half-Million Month" to assure that victory in your church!

South-wide Sunday School Clinic

More than 500 Sunday school workers from outside Atlanta, attended the Convention-wide Sunday school clinic in Atlanta, Ga. A city-wide census of Atlanta taken on January 10 revealed 82,000 prospects and 158,000 possibilities for the Baptists Sunday schools of Atlanta. During the week, 550 new classes and 262 new departments were started in the churches, and 8,000 Sunday school workers attended the night conferences in the 80 participating churches. The clinic was under the direction of J. N. Barnette, Sunday School Board, T. W. Tippet, Georgia Sunday school secretary and Harry Wootan, educational director of the Atlanta association. Tennessee was well represented at this clinic.

More Standard Units

As of January 31st, we have 224 recognized standard units in Tennessee during this Sunday school year. At present we share with Mississippi fourth place in rank among the states of our Southern Baptist Convention. Tennessee can do better! In fact, she can be "On Top" of the list, but only if *YOU* join the movement. Let's put Tennessee On Top! Get your application in for standard recognition. Improve the quality of your work.

V. B. S. Clinic

March 29-30-31, 1954

Each association is urged to send team of five or six workers selected by the associational Sunday school officers.

The Young South

You did it again! And I guess I'm about as amazed as I was the first time!

Every time I share with you a special need, I find myself wondering whether you will be interested enough to do something about it. I should know that you will. You have proved it many times.

Do you remember a letter which was printed in your Young South column early in December—a letter from a four-year-old friend who has polio and wanted some cheer-up mail? The letter was written by Dale Morgan's sister, for Dale, and told of the braces which he wears and of his brave fight to get well and strong again. The last sentence of Dale's letter was the plea, "Fill my mailbox, please."

And you did just that. Here is another letter from Dale, with a wonderful report:

Dear Aunt Polly:

Thank you so much for printing my letter in the BAPTIST AND REFLECTOR, and for the nice things you said.

I received between three and four hundred cards and letters. I enjoyed them a lot. I am sending you the names of the towns they came from—85 different ones! I think our paper has a lot of nice readers.

We are trying to answer the cards and letters as fast as we can. In case we get mixed up and miss writing to someone, I want to thank every one who took time to write me.

I have moved since writing you. My new address is Route 3, Madisonville, Tennessee.

May God bless each and every one.

Your little friend,

DALE MORGAN

Isn't that a nice thank-you letter? Of course, you didn't expect a personal note from Dale, in answer to your card or letter. If he has written to you, I hope that you will write him again, and keep on cheering him up. I noticed on the list of towns from which Dale received mail that Madisonville was named. Perhaps by now the friends who wrote him from there have learned that he has moved to their town and have met him personally. They will have opportunities to visit him and do special things to keep him happy.

Maybe you did not see Dale's letter and therefore did not write him in December. Are you wondering whether your city or town was among those on his list? The first thing I did was to look for Nashville on the list. At the end of the column, in small type, you will find the list just as Dale sent it to me. There were even some from other states. Did he hear from someone in your town?

I want to thank Dale's sister again for writing to us. She gave us an opportunity to do something for someone else, and in making Dale a bit happier we have had lots of fun ourselves. We would like to keep on hearing from Dale—and about him.

Perhaps before very long we can get the good news that the braces are no longer necessary, and that Dale is recovering slowly but surely!

Even a little boy like Dale can learn that it helps to keep smiling and to be happy in spite of braces or pain or other hard things which sometimes come our way. Once a very wise man learned this, and he wrote some Bible words to help us learn it too. Untangle these words to find a pleasant kind of medicine which wise King Solomon recommended.

A good medicine heart like a doeth merry.

Check your answer by Proverbs 17.22.

Have you had your dose of King Solomon's medicine today? Is your heart merry? Are you thinking happy thoughts, reading happy stories, looking at the kind of pictures which will help you to have a merry heart?

Do you know someone else who needs a merry heart? Your happy heart can do

good for that person too. For happiness is "catching." Can you think of something especially nice you might do to make a sad person glad? Will you do it today?

Your friend,

AUNT POLLY

Belcourt at Sixteenth Avenue, S.
Nashville, Tenn.

IS YOUR TOWN NAMED HERE?

Alamo, Athens, Auburntown, Bemis, Benton, Blaine, Bluff City, Briceville, Bristol, Bumpus Mills, Camden, Charleston, Chattanooga, Church Hill, Cleveland, Clinton, Cookeville, Corryton, Cross Plains, Doevoile, Dyersburg, Eagleville, Elizabethton, Elora, Erwin, Foley, (Florida), Ford, Fountain City, Good Spring, Grand Junction, Greenback, Halls, Harriman, Harrogate, Hartsville, Huntingdon, Indian Mound, Jackson, Kenton, Knoxville, Kingsport, Kyles, Lebanon, Lexington, Luttrell Madisonville, Maryville, Martin, McEwen, McMinnville, Medina, Memphis, Middleton, Milan, Model, Morrison, Morristown, Mountain City, Mount Pleasant, Nashville, Oak Ridge, Ringgold (Georgia), Rockwood, Rogersville, Sevierville, Shelbyville, Smyrna, Sparta, Spring City, Springfield, Sweetwater, Tellico Plains, Toone, Trenton, Vonore, Walland, Waynesboro, Woodbury, Wyandotte (Michigan), Zionville.



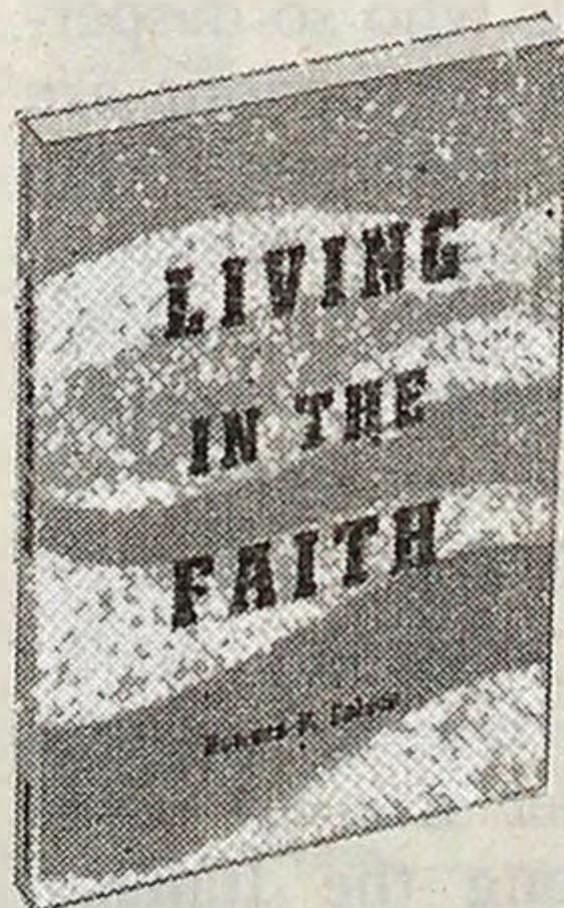
Training Union

CHARLES L. NORTON, Secretary

Baptist Faith Books

LIVING IN THE FAITH

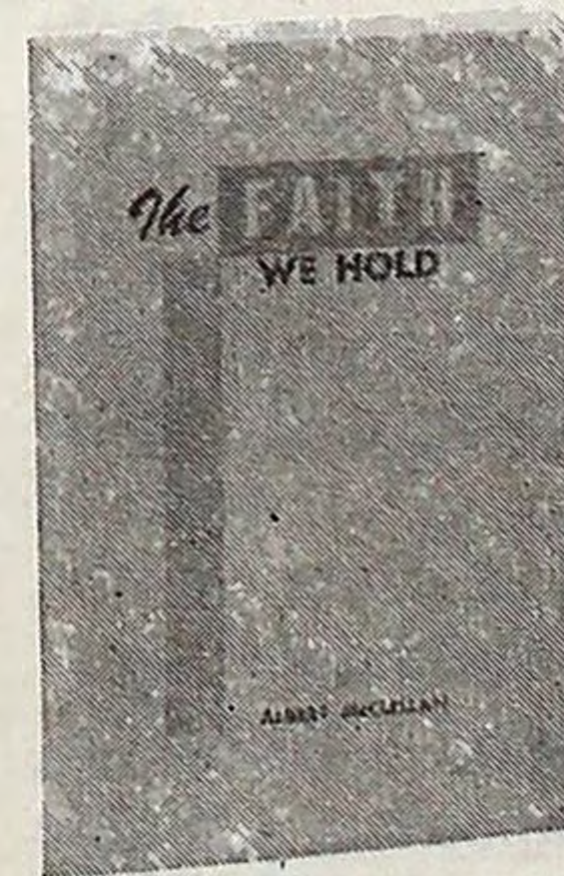
(Adults) Howard P. Colson



Living in the Faith sets forth the great truths of the Christian faith and urges that they be embodied in the everyday lives of Christians. Based strongly upon solid scriptural foundation, the book emphasizes the title.

THE FAITH WE HOLD

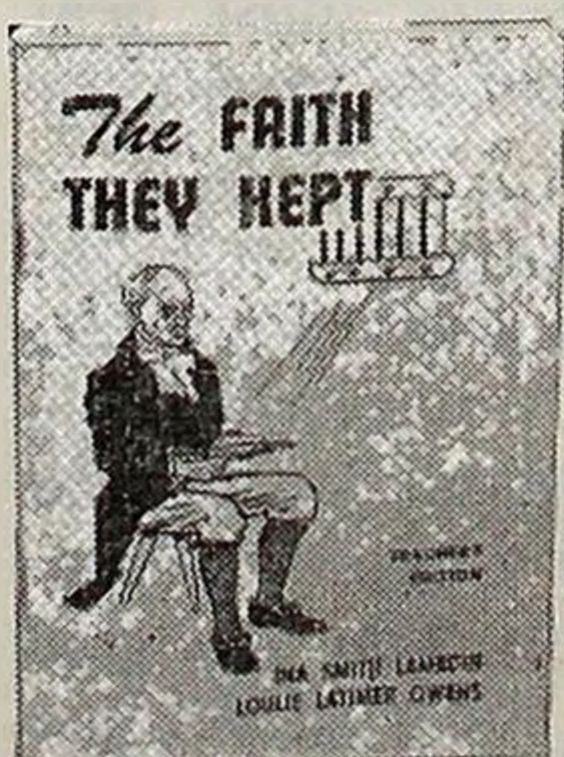
(Young People) Albert McClellan



A dynamic exposition of the faith of the New Testament as believed by Southern Baptists. Young people will find themselves fortified in the faith after having studied this book by an author who has infused his own rich personality into a complex subject.

THE FAITH THEY KEPT

(Intermediates) Loulie Latimer Owen

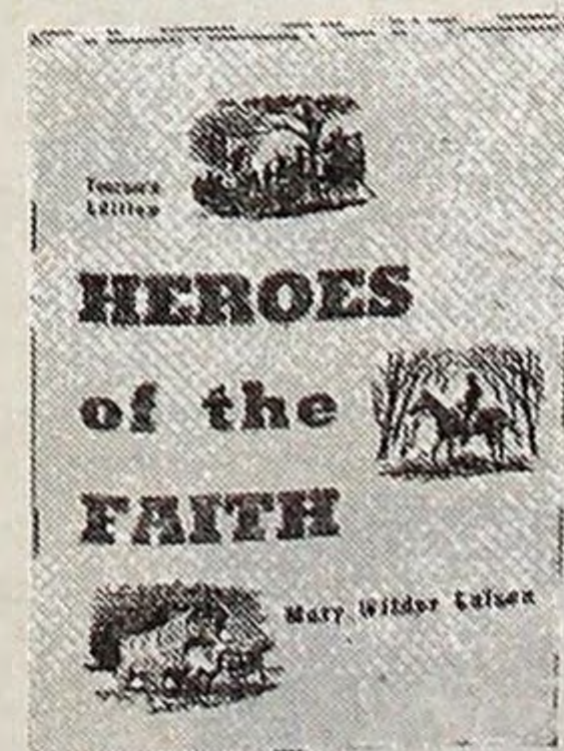


The Faith they kept leads Intermediates to an appreciation of their denomination by study of outstanding Baptists, and guides them toward a more intelligent understanding of Baptist principles. Each chapter tells the life story of some great Baptist,

followed by a discussion of a Baptist doctrine with which this man had an intimate connection.

HEROES OF THE FAITH

(Juniors) Mary Wilder Colson



By presenting to Juniors the life stories of great Baptist leaders of the past, the author shows the heartaches and struggles which went into the development of the religious freedom we as Baptists have today. She creates an appreciation for our

faith and for those who have made our faith possible today. These intriguing stories will keep Juniors fascinated.



Woman's Missionary Union

MISS MARY MILLS, Executive Sec'y-Treas.

Attention! Carver School Alumnae

The meeting for the Alumni of the Carver School of Missions and Social Work will be held at the Park Hotel, Chattanooga, Wednesday, March 24th at 5:30 o'clock. Plates will be \$1.50. We hope that every alumni of our school will put this date on her calendar and enjoy this evening of business and fellowship together.

You Can Help

Home Mission Week of Prayer—March 1-5 and the Annie Armstrong Offering

From a letter from Curran and Nina Belle Gunn, missionaries to the French:

"We send a special prayer request—the building program for this field—that we may know what kind of program the Lord would have in this community. We have discussed a pastor's home, remodeling and repairing and adding to the present auditorium, and building a new auditorium using the old building for the educational building. So far, we have not started anything after two years of trying.

"It isn't a matter of what kind of building we need, because we need them all and a chapel in an unchurched section. The question is which to start first. Our fund is not large, but we know it will grow when we start building. A building program will not solve all of our problems, but it will help solve many of them, including interest, attendance and stewardship." This is only a small sample of the help needed by our home missionaries, and you can help through the Annie Armstrong. March 1-5 is set aside this year to learn the needs of the lost of our homeland, to be spent in prayer that they may come to know the Lord, and to be a means whereby love gifts may be given to support the great work of spreading the Word to those here in the United States and in the Southland.

Mary nationalities — Spanish Speaking, French, Italian, Russian, Japanese, Chinese and Indian are taught, not only of Christ but how to live Christian lives, free from fear of church rules and regulations, free from superstitions, and free from false gods that cannot answer a prayer or forgive a truly penitent heart.

How wonderful that we can share the knowledge of Christ with those that have never heard of him. But this can only be

done through trained missionaries, Good Will Centers, Missions, and so on—and this takes prayer, time, and money. Through the Week of Prayer and Annie Armstrong Offering you can give all three. Help lift "Freedom's Holy Light" so that the blind may step from the darkness of sin into the brightness of Christ's love.

Freedom's Holy Light

Close your eyes and see the multitudes . . . in the mountains, the valleys, the deserts, the swamps, the fields, towns, cities . . . in this homeland. How beautiful upon the mountains are the feet that carry glad tidings . . . who publish peace . . . who say, "Jehovah is our God." So we come again to our annual Week of Prayer and Annie Armstrong Offering for Home Missions, March 1-5. Perhaps you are part of a large church with many women and young people, or of a little church with a half dozen women lifting their voices in prayer.

How wonderful it is that you of Woman's Missionary Union can have the privilege and opportunity at the very special season to send greetings of love to the many people in America that they too may know the love of Jesus. There are so many that have not even heard his name—yes, right here in the United States of North America! Think of the thousands of Indians that live in the western part of this country—and we have only about ninety missionaries working among them. The work of sixteen Good Will Centers has to be carried on by thirty-eight workers. Our French friends who so desperately need to know a personal Saviour are served by twenty-one missionaries. One hundred and fifty missionaries are working with the Spanish-speaking people, but when you consider the 1,200,000 of Spanish descent in Texas along who are not Christians, you can see that more help is needed.

Our home missionaries work among the Japanese and Chinese establishing missions where the people may feel free to come and study and learn among the Italians, and a new most important task, work among the Russians in our own country. It is difficult to even imagine the wide-spread need of those who have not had the chance to hear the Word. Every ear must hear and every tongue must learn to repeat the name of the Lord.

You want all of our country to hear the message; then you want them to tell it to the whole world. Last year the Annie Armstrong Offering goal was one million dollars and the gifts went to more than a hundred thousand dollars over that. This year the goal is \$1,250,000. Let us pray and give because we want our country to be Christian and home missions is helping make it Christian. Won't you help? Won't you lift the torch of Freedom's Holy Light?

Without Credit

One of the most prevailing sins today is that of placing ourselves at the center of what we do, instead of Christ. One is, indeed, hidden in Christ who works without desire for personal credit. Our ego is our greatest stumbling block in serving in an acceptable manner.

Compliments are helpful and encouraging, but if it takes these to keep us in the labors expected of us, then we are seen to be in action for self-glory. We have witnessed, too often, excellent talent at work, only to have the effects on us blunted by the egotistical glint of the eye, or in some mannerism of the performer.

Whenever a person acts for himself he becomes unattractive. To be admired a person must act for others, as a mother for her child, a general for his soldiers, a lawyer for his clients, a neighbor for his friends, a foreman for his men, or a preacher for Christ and his congregation. Otherness in personality is its greatest pull on others. This is the pull of the Cross. Christ was careful to let all know He was acting to glorify God, the Father. Had it been otherwise, the Cross would have been known to us today, only through the findings of the excavators, or historians. About the only way some will be remembered is by carving their names on a tree or in stone. Then generations later people will wonder who the one was who carved the name. —Leon Macon, *Alabama Baptist*



Addressing Post Cards for Lindo

If you wrote to LINDO about the post card addressing proposition, and then sent \$1.00 for a booklet, and are dissatisfied, please let me know about it.

Fred W. Noe, Advertising Manager
Baptist and Reflector
Belcourt at Sixteenth Avenue, South
Nashville, Tennessee



Quarterly Report of the Treasurer

November 1, 1953 - January 31, 1954

Below we submit the Treasurer's report for the first quarter of the Convention year 1953-54. Cooperative Program receipts for the first quarter amounted to \$504,936.88. This is a gain of \$20,203.45 over the same period for last year.

Designated receipts for the first quarter amounted to \$259,531.13. Compared with last year's designated receipts for the first quarter it is a loss of \$2,958.23. Foundation receipts for the first quarter amounted to \$26,800.86. Total receipts for the first quarter amounted to \$791,268.87.

The arrangement follows the usual plan of three columns: Cooperative Program,

Designated and Foundation. Foundation funds are designated funds to causes sponsored by the Foundation. Church treasurers are requested to compare these figures with their records and report any differences to our office. However, please note that any gifts sent to us prior to October 31, 1953 but which did not reach our office until November 1 are included in this report. Likewise, any gifts mailed to us during January 1954 but which did not reach us prior to February 1, 1954 are not included in this report. Such gifts will appear in the next report.

CHARLES W. POPE, *Treasurer*

	Cooperative Program	Designated and Reported	Foundation
BEECH RIVER			
Bath Springs	35.62	5.50	
Beacon	6.00	6.60	
Bible Hill		8.10	
Darden		7.41	
Decaturville	10.00	20.75	
Hinkle		10.00	
Huron		12.50	
Judson		15.82	4.00
Lexington, First	550.00	210.28	
Lexington, Second		15.00	
Parsons	480.00	84.80	75.00
Perryville		10.00	
Pine Grove		40.00	
Piney Creek		8.26	
Rock Hill	59.33	44.27	
Sardis	92.83	21.35	
Scotts Hill	15.50	15.70	
Union	18.89	54.80	
Utah		6.50	
Wildersville	15.00	107.82	
BEULAH			
Aldredge	10.00		
Beulah	100.00	107.35	
Cypress Creek	10.00	1.25	
Gibbs		100.00	
Hathaway	15.00	25.00	
Hornbeak		50.64	
Johnson Grove	50.00	132.00	
McConnell	49.17	46.74	
Macedonia	65.44	44.19	
Martin, First	750.00	673.07	
Mt. Moriah		35.00	
Mt. Olive	87.22	25.00	
Mt. Pelia	89.32	79.50	
New Concord	15.00	35.70	
New Home	49.35	50.00	
New Salem	182.50	236.42	
Oak Grove		25.00	
Obion	171.04	188.30	
Pleasant Grove		12.00	
Pleasant Hill #1		75.00	
Pleasant Hill #2		30.00	
Reelfoot	30.00	111.56	
Ridgely	210.64	21.25	50.00
South Fulton	75.00		
Tiptonville	359.59	173.66	
Troy	40.00	21.49	
Union City, First	2,833.32	181.00	500.00
Union City, Second	833.50	23.15	
Walnut Log		15.00	
Woodland Mills	112.99		
Wynnborg		20.00	
Association		29.42	
BIG EMORY			
Beech Park	75.60	62.53	
Big Emory		25.00	
Caney Ford	9.00	55.55	
Cardiff		208.50	
Childs Memorial		50.00	
Clax Gap		28.00	
Coal Hill		41.00	
Daysville		65.00	
Elizabeth		69.37	
Elizabeth St. Mission		14.70	
Emory River		17.12	
Eureka	60.00	82.56	
Friendly Kelleytown	6.00	56.00	
Kingston, First	573.83	333.58	
Lakeview		57.50	
Lancing		12.26	
Liberty	103.66	50.00	
Middle Creek	64.70		
Mt. Vernal		18.00	
North Rockwood		17.40	
Oakdale	350.00	90.00	
Orchard View		5.00	
Petros	81.51	226.05	

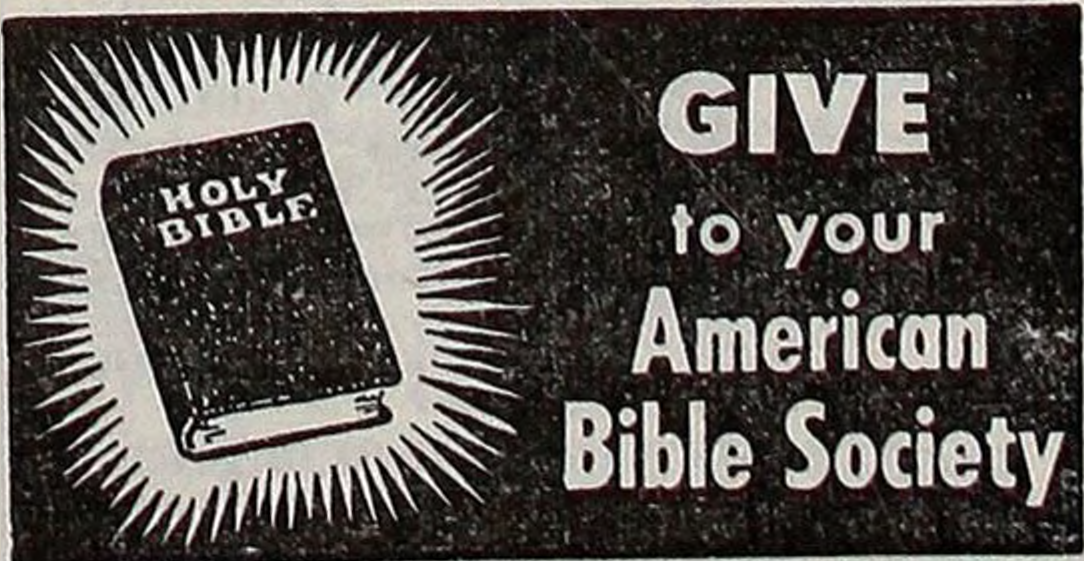
	Cooperative Program	Designated and Reported	Foundation
Pine Orchard	48.00	25.00	
Piney	101.00		
Piney Grove		20.90	
Pleasant Grove	35.00	220.24	30.00
Pond Grove	34.71	30.11	
Prospect	30.00	50.00	
Riggs	64.00	88.09	
Riverside	192.57	97.10	
Rockwood	1,992.80	740.70	275.00
South Harriman	829.30	261.95	
Sugar Grove		17.59	
Sunbright	51.00	54.80	
Swan Pond		57.00	
Trenton St.	2,005.89	900.28	
Walnut Hill	225.00	221.95	
Wartburg	345.04	119.74	
Westel		54.31	
White Oak		40.00	
Whites Creek	93.25	88.16	
Association		131.75	
BIG HATCHIE			
Allen	165.00	70.00	
Antioch		50.00	
Ashport	54.00	12.00	
Brighton	776.79	680.04	
Brownsville	1,550.20	709.97	255.00
Charleston	47.37	80.00	
Covington	1,066.74	454.21	
Elim	20.46	15.00	
Fellowship		16.68	
Fulton		22.50	
Garland	111.12	26.46	
Grace	64.59	12.20	
Harmony	129.36	40.75	
Henning	45.71	55.20	
Holly Grove	316.42	84.20	
Keeling		19.18	
Liberty	618.76	142.79	
McKenzie Chapel		5.00	
Mason	72.43	62.73	
Mt. Lebanon		10.00	
Oak Grove	140.20	87.48	50.00
Pleasant Grove		308.83	15.02
Rialto		2.00	
Ripley	423.35	895.88	15.00
Salem	9.18		
Smyrna	50.00	118.17	
Stanton		88.00	
Walnut Grove	123.85	49.34	
Woodland	97.70	33.00	
Woodlawn	50.00	154.28	10.00
Zion	224.26	70.00	
Association		1.50	
BLEDSON			
Bledson Creek		25.00	
Chestnut Grove		10.00	
Corum Hill	21.37		
Cottontown		127.50	
Dixon Creek		100.00	
Fountain Head	17.42	20.00	
Friendship	19.15	51.25	
Gallatin	800.00	916.37	
Grace Chapel	5.00	10.00	
Hartsville	137.22	282.94	
Hillsdale	3.00	19.00	
Hopewell	33.90	24.00	
Lafayette, First	77.49	22.81	
Mitchellville	58.85	60.38	
New Hope	131.19	60.09	
Portland	752.11	149.55	
Red Boiling Springs	6.00	10.00	
Station Camp		10.00	
Westmoreland	6.09	12.28	
BRADLEY			
Antioch		15.00	
Bellfounte	40.00	24.73	
Bethel		20.00	

	Cooperative Program	Designated and Reported	Foundation
Big Spring	591.45	173.29	100.00
Blue Spring	19.20	20.60	
Calvary	183.27	21.39	
Candis Creek	126.58	39.89	
Cedar Spring		86.96	
Charleston	50.00	73.09	
Chestua	1.00		
Cleveland, First	1,800.00	904.11	200.00
Clingan Ridge		15.00	
Corinth		21.00	
Council		18.69	
East Cleveland		20.00	
East View		16.19	
Elkmont		35.50	
Emanuel		7.10	
Galilee Chapel		10.00	
Georgetown		67.50	
High Point		16.00	
Lebanon		55.30	
Little Hopewell		35.00	
Macedonia		29.84	
Michigan Ave.		67.00	
Mt. Carmel		96.25	
New Friendship	150.00	188.50	13.00
North Cleveland		12.00	
Philippi		75.22	
Rutledge Memorial	20.00	41.77	
Thompson Spring	10.00	56.00	
Victory	34.00	85.00	17.00
Waterville	98.25	128.17	
White Oak		21.60	
Association		7.50	

CAMPBELL			
Avenue		36.78	
Calvary	24.54		
Caryville	33.00	64.13	
Cedar Hill	31.63	34.36	
Clinchmore		13.50	
Demory	15.00	233.00	
Duff		9.50	
East Jacksboro		10.50	
East LaFollette	46.87	20.46	
Elk Valley	60.60	47.50	
Emmanuel	6.00	15.00	
Ford Town		21.00	
Habersham		10.00	
Jacksboro, First	209.58	32.62	
Jellico	795.10	539.25	
LaFollette, First	706.80	283.76	
Lakeview		12.00	
Little Cove Creek		36.09	
Morley	48.12		
Mt. Paron		30.00	
Murrayville		17.50	
Oak Grove		25.00	
Sugar Hollow	10.00		
Vaspar		105.00	
West LaFollette	167.39	10.00	60.00
White Oak		50.00	
Association	4.00		

CARROLL BENTON			
Atwood	110.00	138.00	
Bruceton	306.49	141.00	
Camden	500.00	110.74	
Concord		8.00	
Enon	24.32	17.50	
Howse	79.00	90.42	
Huntingdon	468.00	280.30	60.00
McKenzie	250.00	133.42	220.00
Missionary Grove	2.50	40.36	
Mt. Nebo		25.00	
Prospect	242.80	188.75	
Trace Creek	88.88	46.30	
Trezevant	595.23	358.01	48.14
Union Academy	40.11		
Association		11.40	

CHILHOWEE			
Alcoa	988.65	204.54	
Armona		60.18	
Beech Grove	183.00		
Bethel	50.00	50.00	
Broadway	800.00	152.70	200.00
Cades Cove	30.00	58.70	
Calderwood		19.31	
Calvary	525.00	96.25	
Carson Island		10.00	
Cedar Grove	193.93	189.47	
Centenary	36.77	19.35	
Central	155.63	143.32	
Central Point	212.33	93.62	
Chilhowee	147.70	99.94	60.00
Cold Springs	17.88	78.26	
Dotsons Chapel		33.63	
East Maryville	186.86	26.50	
Ellejoy		23.00	
Everett Hill	662.31	155.95	333.33
Forest Hill	196.11	165.73	
Four Mile		25.00	
Friendsville		160.08	



	Cooperative Program	Designated and Reported	Foundation		Cooperative Program	Designated and Reported	Foundation		Cooperative Program	Designated and Reported	Foundation
Galilee		39.57		Lascassas	82.35	132.17		Spring Creek		8.25	
Grandview	106.89	52.75		Milton	35.00	120.97		Tullahoma	412.05	413.92	
Greenback Memorial		27.00		Mt. Carmel		15.25		Winchester	290.49	143.50	
Happy Valley		10.00		Mt. Herman		57.37					
Hopewell		44.50		Mt. Pleasant		25.00					
Kagleys	60.00	84.25		Mt. View	155.40	18.50					
Liberty	27.53	5.20		Murfreesboro, First	3,300.86	132.75					
Madison Ave.	98.09	13.00		New Hope		23.20					
Marble Hill	49.00			Nolensville		20.50					
Maryville, First	7,137.33	1,717.19	71.00	Powells Chapel	158.03	117.29					
Midway		18.84		Republican Grove	38.21	37.06					
Millers Cove	95.12	118.14		Rucker	40.89	22.92					
Mt. Carmel		12.43		Smyrna	235.00	168.44					
Mt. Lebanon	325.00	586.30	32.00	Talors Chapel	40.00	65.25					
Mt. Zion	6.30	19.50		Third	140.00	57.59					
Niles Ferry	300.32	111.00		Wards Grove	52.00	25.00					
Oak Street	117.60	21.40	50.00	Woodbury Road	37.95	77.74					
Oak View	76.89	40.45									
Old Chilhowee	30.00										
Old Piney Grove	130.00										
Pilgrim	20.00	6.00									
Piney Grove	192.66	155.23									
Piney Level	152.00	100.00									
Pleasant Grove	400.40	233.12									
Prospect	49.12	15.50									
Providence	136.87	104.00									
Rockford	50.15	15.87	25.00								
Rocky Branch	93.00	50.00									
Salem		35.95									
Six Mile	117.03	32.42									
Springview	142.42	153.67									
Stock Creek	458.35	47.05	6.21								
Union Grove	10.00	100.00									
West Maryville		36.00									
Wildwood	149.25	72.93	50.60								
Association		5.00									
CLINTON											
Andersonville	167.75	63.86									
Beech Grove	145.91	56.23									
Bethel	90.62	24.98									
Black Oak	251.24	136.00									
Blowing Springs		48.40									
Briceville		19.25									
Calvary		18.12									
Central	479.70										
Clear Branch	115.94										
Clinton, First	3,877.48	80.19	5.00								
Clinton, North		80.06									
Clinton, Second	355.40	47.54									
Dutch Valley		25.00									
Edgemoor		10.00									
Farmers Grove	15.00	15.00									
Frost Bottom		20.00									
Glenwood	488.63	359.45									
Island Ford	10.00	25.00									
Lake City, First	720.50	51.96									
Lake City, Main St.	216.12	52.56									
Laurel Grove		12.00									
Longfield	33.36	3.10									
Mineral Springs		50.00									
Moore's Chapel	80.00	112.00									
Moran		17.50									
Mountain View		5.50									
New Mountain View		11.25									
New Salem		10.71									
Norris, First		40.00									
Oak Ridge, First	3,121.10	383.38	135.00								
Oliver Springs	526.72	158.00									
Pleasant Hill	35.00	20.00									
Pleasant View	3.00	63.00									
Poplar Creek		143.33									
Robertsville	870.48	227.19									
South Clinton	139.68	25.85									
Union Valley		35.00									
Willow Brook		2.87									
Wolf Valley	24.77	5.30									
Zion	119.79	10.00									
CONCORD											
Barfield		64.00									
Bradley Creek	2.00	15.92									
Christiana	52.48	131.59									
Concord	10.50	98.01									
Eagleville	87.28	116.25									
Fellowship	31.99	16.98									
Greenhill		5.00									
Holly Grove	100.00	25.00									

Business Men Read

"OPEN WINDOWS"

Every day



Order this Southern Baptist devotional Quarterly regularly. 7c per copy (when ordered with other literature), Single copy alone 15c. Year's subscription 50c.

BAPTIST SUNDAY SCHOOL BOARD
127 Ninth Ave., N., Nashville 3, Tenn.

DUCK RIVER

Altamont	15.00	5.00	
Cowan	564.08	38.92	
Cross Roads	15.00	37.50	
Decherd		96.65	
Estill Springs	60.38	59.05	
Highland	315.46	66.03	
Hillsboro		20.00	
Huntland	87.12	31.40	
Keith Springs	35.30	10.75	
Magness Memorial	238.03		
Manchester	90.00	72.45	
Maxwell	27.05	8.50	
Monteagle	29.75	7.50	
Palmer	20.00		
Rutledge Falls		9.15	

	Cooperative Program	Designated and Reported	Foun- dation
Rutherford		391.41	
Salem	468.73	215.76	
Spring Hill	97.78	155.73	
Trenton, First		983.75	
Walnut Grove	104.95	13.35	
White Hall	149.30	37.00	

GILES

Bradshaw		7.00	
Hannah	16.02	25.00	
Liberty Hill		30.00	
Lynnville		33.25	
Minor Hill	6.25	51.36	25.00
New Hope	49.00	113.89	
New Zion		12.83	
Pulaski, First	300.00	65.72	10.00
Rock Springs		25.00	
Union Hill	15.00	12.00	
Wheelerton		6.00	

GRAINGER

Adriel		17.00	
Barnards Grove	154.23	73.88	
Bean Station		10.00	
Block Springs	188.82	50.00	
Blue Springs		76.05	
Buffalo		8.50	
Byerleys		27.39	
Central Point	72.64	21.49	
Helton Springs	106.25	64.00	
Indian Ridge	42.00	33.20	
Locust Grove		90.00	
Mitchell Springs		55.58	46.50
Mount Eager		10.35	
Mouth of Richard	144.89	122.00	
Narrow Valley	52.65		
New Blackwells		60.00	
New Corinth	31.63	61.33	
Noeton		10.00	
Oakland	107.50	44.22	
Powder Springs	15.28	50.00	
Puncheon Camp		20.00	
Rutledge	291.55	136.98	
Sunrise	70.80	59.00	
Tampico		25.00	
Washburn	11.00	56.59	

HAMILTON

Alton Park	90.00	75.00	
Apison	140.27	34.00	
Avondale	2,566.60	2,736.30	
Bartlebaugh		25.00	
Birchwood	128.70	23.20	
Boulevard		9.00	
Brainerd	5,736.46	388.50	450.00
Brainerd Hills		174.15	38.30
Calvary	710.88	332.81	150.00
Cedar Hill	602.78	84.24	
Central, Chattanooga	1,787.00	753.85	90.00
Central, Hixson	79.38		
Chamberlain Ave.	939.38	132.10	
Chattanooga, First	7,000.00	25,800.00	2,975.00
Chattanooga, Second	792.05	423.67	
Clifton Hill		45.78	
Concord	975.00	127.13	
Cross Road	111.00	18.00	
Daisy	179.75	50.65	
Dallas		36.11	
Daytona Heights	30.00	62.00	
East Brainerd	33.24		
East Chattanooga	500.10		116.62
Eastdale	750.00	164.20	
East Lake	1,131.73	490.56	144.00
East Ridge	1,374.65	307.49	
Edgewood	12.00	19.46	
Falling Water		24.50	
Falling Water Tabernacle		10.00	
Greenwood		100.00	
Guild		30.00	
Harrison		32.23	
Haynes Memo. Chapel		18.00	
Highland Park	900.00	543.60	5.00
Hixson	365.86	30.28	
Hughes Ave.	3.00	12.60	
Kings Point	120.97	11.00	
Kingwood		100.00	
Lookout Mountain	444.42	517.59	
Lookout Valley	197.00	452.27	
Lupton City		4.25	
McCarty	46.51		
Maple Grove	6.00	100.00	
Memorial Chapel		9.70	
Middle Valley		45.75	
Morris Hill	90.00	50.50	
Mountain Creek	90.35	50.00	
Mt. Carmel		18.00	
New Liberty		75.00	
New Shepherd Hill		21.00	
New Union		9.25	
North Market	63.75	21.54	
Northside		696.82	
Oak Grove	960.00	232.74	
Oak St.	254.80	119.46	
Oakwood	133.19	223.52	7.67
Ooltewah	529.00	298.15	
Pan Gap	5.00	113.75	
Parkers Gap	18.95	69.72	
Philadelphia		41.00	
Pilgrims Rest		23.41	
Pleasant Grove	30.00		
Red Bank	1,216.00	527.17	1,000.00
Ridgedale	4,491.65	1,169.37	
Ridgeview	782.24	60.65	
Rivercrest	74.31	31.40	
Shepherd		12.50	

	Cooperative Program	Designated and Reported	Foun- dation
Signal Mountain	73.99	89.72	
Silverdale	143.95	67.38	
South Daisy	100.34	7.00	
South Soddy	9.80	77.60	
Spring Creek	600.00	143.36	
St. Elmo	1,076.75	489.72	12.50
Suck Creek	15.00	28.50	
Summit		21.57	
Temple	40.00	77.77	
Tremont		7.27	
Tynor	45.00	26.02	
Union Fork	25.00	15.00	
White Oak	1,138.66	134.31	
Woodland Heights	20.00	279.40	77.00
Woodland Park	1,500.00	1,007.25	
Association	30.00		

HARDEMAN

Bethlehem	8.88	18.00	
Bolivar	1,298.53	466.97	
Cloverport		189.77	
Ebenezer		29.78	
Grand Junction	396.52	159.50	
Hatchie	50.00		
Hickory Valley	36.50	16.25	
Hornsby		100.50	
Middleburg	44.67	55.72	
Middleton	113.46	50.15	20.00
Midway	86.28	29.73	
Parrans	18.50	149.64	
Piney Grove	26.88	9.19	
Pocahontas	5.00		
Rocky Springs		34.45	
Saulsbury	84.99	26.99	
Silerton	27.24	50.00	
Toone	87.40	48.13	
West Memorial		54.00	
Whiteville	316.89	142.99	
Association		25.00	

HIWASSEE

Cedar Fork	15.00		
Chapmans Grove	15.00	24.49	
Eagle Furnace		34.00	
Fellowship	25.00		
Hopewell	15.00	72.00	
Old Friendship		25.00	
Paint Rock	36.95	36.12	
Peakland		2.00	
Pisgah		16.65	
Salem		25.00	
Shiloh		17.00	
Ten Mile	30.00	10.87	

HOLSTON

Antioch	297.00	26.30	
Asbury	75.00	18.30	
Baileyton		91.23	
Bethany		98.30	
Bethel		50.00	
Beulah	51.29	116.46	
Bloomingdale		30.68	
Blountville	488.55	81.12	
Bluff City	238.01	174.20	
Bluff City, First	375.77	231.28	
Boones Creek		62.00	
Buffalo Ridge		78.00	
Calvary "B"	1,050.00	412.59	
Calvary "E"	375.00	279.72	37.50
Calvary "G"		10.00	
Calvary "K"	375.00	110.00	
Cedar Creek		1.00	
Cedar Grove	70.00	68.46	
Central, Erwin	30.00	41.00	
Central, Johnson City	4,500.00	3,392.51	300.00
Cherokee	20.00	31.05	
Cherry Grove	15.00	27.87	
Chinquepin		188.21	59.02
Clear Branch		75.00	
Clifton View		12.50	
Double Springs	75.23	34.89	
Enon	65.54		
Erwin, First	1,226.16	1,619.18	143.00
Erwin, Ninth St.	452.30	221.33	
Fall Branch	304.59	153.17	50.00
Fall Creek	38.75	65.03	
Fall St. Chapel	30.00	35.00	
Flag Pond	91.29	28.70	
Fordtown		82.78	
Fort Robinson	60.00	52.31	
Glenwood	480.00	279.85	
Gravelly	12.50	124.41	
Greenville, First	1,069.13	732.60	154.12
Greenville, Second		64.00	
Harmony	25.00	15.75	
Holston	140.89	61.96	
Holston Valley		13.55	
Hulen Ave.	21.00	25.00	
Island Road		9.60	
Jonesboro, First	866.73	714.79	
Kingsport, First	8,749.98	1,354.79	569.98
Litz Manor	135.00	62.52	
Lovelace		25.00	
Lynn Garden		321.14	
Midway	75.00	222.74	
Mountain View		16.00	
Muddy Creek		27.00	
New Lebanon	50.00	72.50	
New Salem		125.00	
New Victory	102.90	266.74	
Oakdale		32.45	
Oak Glen		23.81	
Oak Grove		105.33	
Oak Hill	67.04	69.12	

	Cooperative Program	Designated and Reported	Foun- dation
Philadelphia		44.75	
Pine Crest		13.30	
Pleasant Grove	13.00	46.00	
River Bend	10.00	2.50	
Roan Hill	102.30	77.40	
Rocky Springs		75.00	
Shady Grove		16.60	
Shallow Ford	107.76	77.58	
Shows Chapel	20.00	121.50	
Solomons		7.11	
Southside	50.00	124.83	
Springdale	68.75	86.20	
State Line	69.65	91.50	
Sullivan	45.00	119.50	
Sulphur Springs	26.45	159.90	
Summersville		175.00	
Sunnyside		100.00	
Telford	61.18		
Temple "JC"	507.91	168.70	
Temple "K"	30.00	51.50	
Tennessee Ave.	53.00	40.00	
Unaka Ave.	270.00	751.09	
Unicoi	50.00	144.02	
Union	151.00		
Virginia Ave.	388.40	155.19	
Walkers Fork		24.23	
Westerley Heights		33.29	
West Side	9.00		
Westview	66.70		
Woodlawn	200.00	37.05	
Association	325.00	85.51	37.20

HOLSTON VALLEY

Big Creek	32.00	87.04	
Block City		18.50	
Caney Creek		25.80	
Cave Springs		9.50	
Church Hill	55.00	252.55	
Compromise		29.25	
East End Mission	52.44	87.38	
Gills Chapel	55.00	48.07	
Henards Chapel	123.81	274.31	
Hickory Cove	45.00	206.12	
Howes	5.00	57.30	3.50
Longs Bend	7.35		
Looneys Chapel	15.00	2.00	
Lyons Park		16.33	
McPheeters Bend	249.99	165.23	10.00
Mooresburg	37.50	24.54	
Morrisetts Chapel		1.50	
Oak Grove	6.00	142.50	
Persia	53.60	82.56	
Piney Grove		6.00	
Prices Grove	10.00		
Providence		15.00	
Rogersville	1,793.68	725.27	60.00
Shady Grove		66.85	
Surgoinsville	420.12	214.17	
Tunnell Hill	17.98	45.85	
Walkers		31.00	
West End Mission		3.00	
Association		36.44	

INDIAN CREEK

Bethel		11.00	
Calvary	44.34	7.80	
Cedar Grove		6.00	
Collinwood	8.55	25.00	
Green River	2.50	38.72	
Hopewell		10.50	
Leatherwood		9.25	
Lutts	73.93	58.55	
Mt. Hermon	35.75	38.79	
Oakridge	7.22		
Olive Hill	2.50	28.75	
Philadelphia	50.00	49.05	
Rays Chapel	20.70		
Savannah	128.80	22.04	
Southside		3.88	
Turkey Creek	50.00	26.94	
Waynesboro	90.00	119.30	
Association		19.00	

JEFFERSON

Antioch		42.42	
Buffalo Grove	177.28	44.28	
Dandridge		138.65	
Dumplin	146.95	17.58	
Flat Gap	31.00	72.12	
French Broad		33.00	
Jefferson City, First	1,000.00	2,680.34	40.00
Mill Spring	276.70	48.69	
Mountain View		28.23	

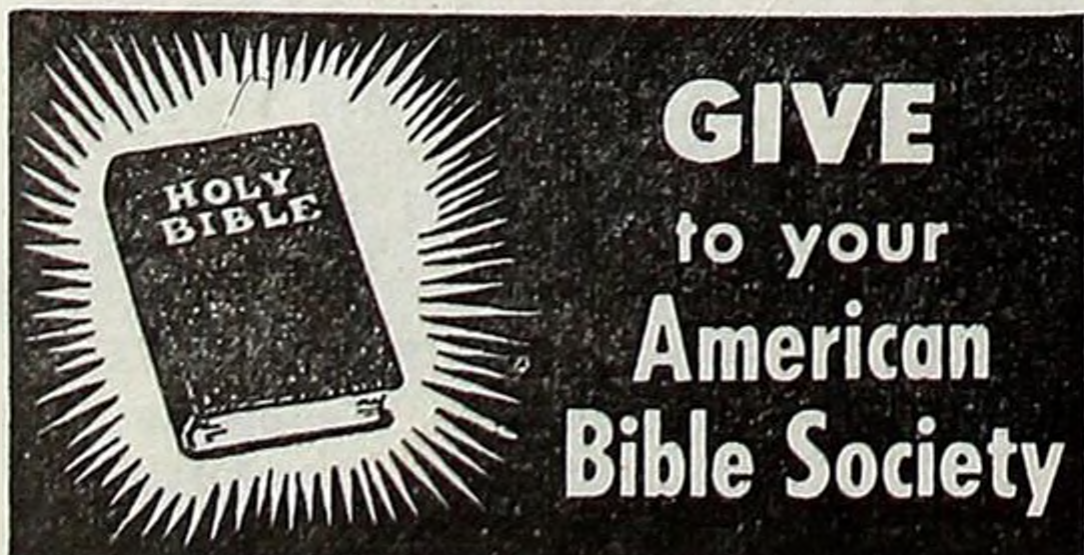
CHURCH CHAIRS



	Cooperative Program	Designated and Reported	Foun- dation
Nances Grove	71.20	74.25	
New Market	124.36		18.98
Nina		25.00	
Northside	300.00	128.83	
Piedmont	214.78	61.10	
Pleasant Grove "P"	124.06	272.10	
Rocky Valley	84.75	24.60	30.00
Talbott	27.59	53.59	
White Pine	525.00	107.30	105.00
JUDSON			
Charlotte	40.79		
East Side		13.75	
Fairview		22.75	
Missionary Ridge		15.00	
New Hope		26.20	
Parkers Creek		8.75	
KNOX			
Alice Bell	567.26	296.30	
Arlington	3,025.96	1,420.85	24.00
Ball Camp	20.99	87.70	
Bearden		4.79	
Beaumont Ave.	218.70	28.05	
Beaver Dam	294.62	12.84	
Bell Ave.	3,708.77	808.32	40.00
Belmont Heights	150.00	90.52	
Black Oak	211.55	115.25	80.23
Bon View		12.00	
Broadway	6,240.00	4,570.30	1,850.00
Calvary	580.70	370.00	
Central, Bearden	450.00	565.53	
Central, Fountain City	6,000.95	1,948.45	185.00
Central View		4.50	
Churchwell Ave.	369.26	14.50	
City View	911.68	95.10	100.00
Clear Springs	108.00	91.00	
Corryton	313.00	168.69	
Crichton	249.99	149.23	
Deaderick Ave.	400.00	89.88	
Ebenezer		50.00	
Elm St.	63.24	113.25	
Euclid Ave.	440.94	122.97	
Fairview	106.95	35.74	
Fifth Ave.	5,400.00	3,618.07	8.00
Fort Sanders	312.17	161.23	
Fountain City, First	1,400.00	209.68	450.50
Free Grace	155.49	60.70	
Gallahers	233.00	56.00	
Gayland Heights	85.00	43.15	
Gillespie Ave.	343.55	206.01	170.00
Glenwood	761.50	73.60	
Grace	126.93	140.91	
Grassy Valley	108.38	50.00	
Greenway Branch	30.00		
Grove City	39.00	38.80	
Grove Heights		12.10	
Grove Hill		51.90	
Highland	107.43	50.00	
Hillcrest		23.00	
Holston		118.43	
House Mountain		34.31	
Immanuel	1,815.34	108.08	
Inskip	1,813.32	648.45	350.00
Island Home	1,000.00	620.00	
John Sevier	69.73	19.86	
Knoxville, First	22,278.16	4,724.92	283.75
Knoxville, First Mission	53.40		
Liberty Branch		33.50	
Lincoln Park	2,170.13	282.32	820.00
Little Flat Creek	399.50	25.00	
Lonsdale	605.48	68.10	40.00
Loveland	14.60	8.00	
Lyons Creek	288.33	132.23	
McCalla Ave.	2,500.37	115.75	
Marbel City	25.00	17.75	
Marbledale	50.00	16.57	
Mars Hill		166.03	
Meridian	288.11	191.77	
Middlebrook Heights		18.00	
Middlebrook Pike		2.50	
Mt. Carmel	15.00	46.38	
Mt. Harmony	45.00	480.00	68.68
Mt. Olive	900.00		100.00
Mountain View	62.97	21.25	
New Hopewell	686.55	248.09	
North Hills	30.00		
North Knoxville	165.07	42.02	
Northside		100.00	
Norwood	9.00	5.80	
Oakwood	1,200.00	55.15	
Park City	232.30	106.47	
Park Lane	110.00	142.87	12.25
Piney Grove	54.34	19.00	
Powell	606.19	101.64	116.69
Ramsey Heights	193.00	84.32	
Ridgedale	49.20	30.65	
Ridgeview	30.00	70.00	
Riverdale	385.17	57.50	
Riverview		59.79	
Rocky Hill	15.92	61.55	
Roseberry	214.85	42.00	

	Cooperative Program	Designated and Reported	Foun- dation
Salem	277.56	125.05	50.00
Seven Islands		20.27	
Sevier Heights	2,600.00	1,002.81	30.00
Sharon		45.00	
Skyline Drive	210.50	130.80	
Smith Grove		20.00	
Smithwood	2,824.33	143.27	235.45
South Knoxville	1,933.48	990.61	75.00
Stony Point	10.94	33.78	
Straw Plains	220.75	47.47	
Sunny View	35.32		
Sutherland Ave.		22.00	
Tennessee Ave.		57.50	7.00
Third Creek		223.00	
Thorn Grove	39.18	42.35	
Union		70.62	
Unity	39.64	30.25	
Valley Grove		62.16	
Valley Grove, Chapman Highway	200.72	627.00	
Wallace Memorial	444.04	1,144.44	
Washington Ave.	116.16	35.65	
Washington Pike	661.00	62.94	57.00
West End	19.86		
Wilder Place		3.50	
Association		438.42	80.75
LAWRENCE			
Barnesville	3.92	3.79	
Bethel		144.60	
Blooming Grove		65.00	
Bonnertown	95.77	50.00	
Brace		6.25	
Deerfield		21.00	
Ethridge	15.00	13.00	
Five Points	37.00	33.92	
Gum Springs	10.00	59.75	
Iron City	37.50	96.37	
Lawrenceburg	850.00	320.67	
Leoma	19.80	63.95	
Liberty Grove	10.00	63.00	
Loretto	33.50	27.87	
Macedonia	7.37	7.15	
Mars Hill	8.00	36.00	
Mt. Horeb	115.50	65.10	
New Prospect	33.55	36.00	
O K		63.50	
Park Grove		35.00	
Ramah		54.00	
Summertown		33.92	
West Point		63.50	
McMINN			
Antioch	25.00	121.25	
Athens, First	4,026.84	856.44	60.00
Calhoun		55.00	
Calvary (McMahan)	72.32	46.17	
Cambria	26.66	22.76	
Clear Springs		42.00	
Clear Water		64.00	
Cog Hill	52.90	54.53	
Cottonport		13.16	
Dixon Avenue		15.00	
Double Springs		39.30	
Eastanallee		89.20	
East Athens	821.57	191.42	10.00
East Niota	6.58	7.65	
Englewood	475.02	229.15	
Etowah, First	1,350.00	429.57	67.00
Goodfield	205.96	266.84	
Good Springs	51.96	61.11	
Lakeview		35.00	
Lamontville		13.22	
Manilla Chapel	10.00		
Marshall Hill		20.00	
Mt. Harmony #1		58.25	
Mt. Harmony #2		40.42	
Mt. Verd	28.87		
New Bethel		37.45	
New Hopewell		25.00	
New Zion		31.47	
Niota, First	422.40	831.58	
North Athens	275.30	85.07	
North Etowah	309.79		
Pond Hill		43.04	
Riceville	82.00	221.90	
Rocky Mount		40.00	
Rogers Creek		10.00	
Sanford		50.00	
Shiloh		32.12	
Short Creek	19.04	61.00	
South Liberty		32.15	
Union Grove #1		20.67	
Union McMinn		55.86	
Valley View		10.00	
Walnut Grove		30.00	
West View		35.50	
Wildwood	99.43	164.30	
Zion Hill		12.10	
Association		20.00	
McNAIRY			
Adamsville		73.15	
Bethel Springs	17.11	4.13	
Calvary	10.00		
Clear Creek	9.14	9.72	
Falcon		29.25	
Gravel Hill	150.00	111.64	50.00
Hopewell		36.10	
Mt. Gilead	221.44	48.23	
Mt. Zion		56.00	
Olive Hill		10.00	
Pleasant Site	4.11	32.41	
Ramer		22.50	
Selmer	516.76	112.53	
West Shiloh	107.06	150.40	

	Cooperative Program	Designated and Reported	Foun- dation
MADISON-CHESTER			
Ararat	126.26	91.00	
Beech Bluff	15.00	12.00	
Beech Grove	31.04	50.10	
Bemis	1,593.85	288.87	155.00
Bethel	2.25	55.80	
Calvary	1,650.00	453.18	159.81
Clover Creek	111.70	49.26	4.60
Cotton Grove	50.00	10.00	
East Laurel	78.31	44.06	
Englewood	130.45	60.56	
Friendship		53.75	
Henderson	568.67	180.58	
Hill Crest	209.00	6.22	26.94
Jackson, First	5,030.00	2,107.87	2,355.00
Liberty Grove	83.10	18.90	
Madison	102.60	13.85	1.17
Malesus	230.10		
Maple Springs	79.05	49.66	
Mercer	120.00	90.94	
Mitchells Chapel		24.00	
North Jackson	720.00	79.25	80.78
Oakfield	82.90	20.97	
Parkburg	19.40	54.72	
Parkview	1,200.00	515.90	7.65
Pinson	226.58	11.33	
Pleasant Hill	97.00	12.67	
Pleasant Plains		111.17	
Poplar Corner		25.00	
Poplar Heights	489.00	317.20	25.00
Royal St.		59.00	
Spring Creek	16.00	80.50	
Wards Grove	53.04	55.80	
West Jackson	4,652.68	1,972.07	429.86
Westover	386.65	95.26	
Wilson School Mission Association		16.73	
		10.00	
MAURY			
Blue Buck		20.73	
Calvary		26.58	
Centerville	238.82	185.64	
Columbia, First	1,450.93	439.87	
Cross Roads	25.00	20.50	.50
Friendship	30.00	65.78	
Highland Park	236.19	66.35	
Hohenwald	203.75	73.19	
Knob Creek	41.50	16.00	.50
Lobelville		18.00	
Mt. Pleasant	375.00	193.80	
Rock Springs	36.64	8.70	
Santa Fe	45.00	30.00	
Theta		8.00	
Viola	36.62		
Association		15.00	
MIDLAND			
Atkin		34.50	1.00
Bells Camp Ground		12.68	
Bishopville		26.18	
Clear Springs		100.00	
Graveston	68.31		
Pleasant Hill		44.70	
Riverview		2.00	
Solway		36.00	
Texas Valley		25.00	
Union		134.20	
MULBERRY GAP			
Duck Creek		50.55	
Fairview	17.78	28.48	
Gap Chapel		12.75	
Kyles Ford	11.00	23.50	
Liberty #1		100.00	
Mulberry Gap	72.16	42.18	
New Life		44.46	
Pleasant Hill		38.20	
Sneedville	31.55	23.25	
Trent Valley		94.08	
Valley View		21.20	
War Creek		27.62	
Association	15.00		
NASHVILLE			
Antioch	88.00	89.26	
Ashland City	107.02	37.66	
Bakers Grove	124.37	83.68	2.00
Belmont Heights	7,284.36	3,130.09	523.77
Berryville		7.75	
Bordeaux	138.56	91.20	
Calvary	907.70	84.75	10.00
Centennial		64.05	
Central	15.00	5.00	
Dalewood	1,337.56	179.46	
Dickerson Road	89.00	15.85	
Dickson	180.00	74.41	
Donelson	1,235.15	290.22	265.00
Eastland	1,203.46	506.72	
Eastwood	73.15		
Edgefield	1,518.27	1,325.45	
Ewing		29.78	
Fairview Chapel	97.52	18.00	
Fatherland Street	38.40		
Franklin	501.04	162.00	
Freeland	101.77	34.67	
Friendly Chapel	64.97	15.00	
Gallatin Road	485.75	408.85	
Glendale	260.68	196.30	
Glenwood	423.42	53.96	
Goodlettsville	1,184.72	134.02	132.00
Grace	4,205.33	403.29	
Grandview	773.45	252.39	
Green Hill	23.55	181.00	
Grubbs Memorial		12.50	



	Cooperative Program	Designated and Reported	Foun- dation		Cooperative Program	Designated and Reported	Foun- dation		Cooperative Program	Designated and Reported	Foun- dation
Arlington	30.00	27.55		Dillard Creek		4.00		Doe River	133.32	126.70	
Bartlett	461.56	151.29		Gainesboro	33.00	4.00		Doe Valley		4.25	
Barton Heights	72.00	49.10		Johnsons		10.00		Dysons Grove		15.25	
Bellevue	16,905.16	6,887.07	741.96	Macedonia		4.50		Eastside	180.00	57.36	
Berclair	1,400.00	221.21		Maple Shade Mission		7.12		Elizabethton, First	3,111.07	1,142.55	35.00
Beverly Hills	150.00	61.12		Monterey	199.00	105.13	10.00	Elk River		25.00	
Big Creek	20.00	22.73		Poplar Grove	32.59	30.00		Evergreen		133.86	
Boulevard	3,763.53	272.36	231.75	Rocky Point		13.25		Fairview	179.00	86.00	
Brceelove	75.00	12.34		Sand Springs		58.00		Hampton	153.81	113.46	
Brooks Road	114.15	15.00		Steven Street	20.00	40.80		Happy Valley		6.45	
Brunswick	60.00	105.74		Westview	212.72	122.39		High Point		50.00	
Buntyn St.	70.00	253.06	4.00	Woodcliff		3.28		Immanuel	444.00	396.71	
Calvary	1,543.63	552.00						Little Doe	41.00	114.34	
Capleville	208.63	56.05						Little Milligan		43.00	
Central Ave.	3,000.00	253.03	25.00					Little Mountain	65.64	51.97	
Charjean Chapel		30.29						Midway		23.65	
Cherokee	753.89			Blairland	30.00	173.09		Mountain City	93.91	202.26	
Collierville	800.76	196.90		Cedar Valley	5.00	25.10		Mountain View		20.00	
Colonial Mission		20.56		Chestua	138.23	134.86		Northside Mission		6.00	
Cordova	166.50	359.75		Christianburg	46.38	27.62		Oak Street	200.31	115.38	
De Sota Heights	320.94	94.08		Citico		20.00		Pine Grove	28.56	158.80	
Eads		23.80		Clifton		4.00		Pleasant Grove	129.90	354.89	
Eastland	90.24	2.50		Coker Creek		14.60		Poplar Grove	54.59		
Egypt	75.60	183.43		Corinth		353.00		Powder Branch		6.00	
Elliston Ave.	90.00	46.25		Ebenezer	10.00			Rittertown	138.20	35.30	
Eudora	953.16	274.58	27.50	Fairview	120.00	200.00		Roan Creek		70.00	
Fisherville	10.00	117.18		Fairview Tabernacle		26.00		Roan Mountain		15.35	
Flynn Ave.	30.00	13.54		Glenlock		41.00		Rock Springs		16.72	
Forest Hill	224.46	41.36		Hopewell		125.00		Shady Valley		30.00	
Frayser	465.88	83.70		Loudon	466.90	138.10	110.75	Siam	1,130.52	253.91	
Germantown	152.45	115.11		Mission of Loudon	41.45			Sinking Creek	101.53	183.15	
Glenview	128.97			Macedonia	4.00			State Line		25.55	
Graham Heights	308.24	65.57	4.00	Madisonville	583.35	499.39		Stoney Creek	77.56	10.00	
Greenlaw	145.96	45.01	40.00	Maple Springs		10.00		Sugar Grove		23.00	
Highland Heights	5,100.00	519.41	600.00	Mt. Harmony		20.00		Unaka Mission		42.50	
Hollywood	376.64	268.60		Mt. Isabell		20.00		Union	300.00	114.35	
Kennedy Memo.	702.58	236.35		Mt. Zion "L"		123.43		Vaughts Gap		6.35	
LaBelle	3,496.09	631.34	103.50	Murrays		4.00		Zion		50.00	
Lamar Heights	1,670.60	515.00	100.00	New Bethany		34.66					
Leawood	388.27	9.06		North Sweetwater	30.00	128.79					
Levi	240.00	98.98		Notchey Creek	30.00	50.00	25.00				
Longcrest	10.00			Oak Grove	13.87	20.44					
Longview Heights	1,201.29	115.97		Oakland	27.44	42.31					
Lucy	66.66	10.80		Philadelphia	96.40	136.18					
McLean Blvd.	1,438.30	989.23		Prospect	150.00	31.15					
McLean Chapel		12.65		Reed Springs		69.50					
Malcomb Ave.	360.00	5.00	5.00	Rocky Springs	18.00	50.00					
Mallory Heights	741.00	38.00		South Madisonville		25.00					
Memphis, First	20,219.62	8,730.26		Sweetwater	900.00	1,078.53	100.00				
Merton Ave.	1,125.00	211.61	118.50	Tellico Plains		36.60					
Millington	643.91	177.37		Towee Falls	10.00						
Mt. Pisgah	61.10	17.05		Union Fork Creek	10.00						
Mullins Station	40.00	30.96		Union Grove		12.50					
National Ave.	540.00	72.55	4.00	Vonore	30.00	99.20					
Oak Lawn	114.41	24.35		Watson Chapel	21.95	56.40					
Oakville Memo.		72.50		Williamsburg		6.00					
Park Ave.	1,709.70	187.42	215.00	Association		19.80					
Parkway	1,913.13	528.60									
Poplar Ave.	1,342.00	176.03	6.00								
Prescott Memo.	4,103.53	588.44	406.28								
Raleigh	1,146.25	275.12	150.00								
Riverside	314.00	32.62									
Rugby Hills		25.00									
Seventh St.	979.56	1,311.80	41.70								
Southland	357.80	45.34									
Southmoor	125.00	6.82									
Speedway Terrace	1,650.00	397.52	150.00								
Sylvan Heights	225.00	270.74									
Temple	13,227.70	2,507.15									
Trinity	1,639.70	479.61									
Union Ave.	6,101.73	1,967.22	501.51								
Victory Heights	10.00	24.50									
Wells Station Chapel	210.00	69.13									
Whitehaven	168.00	634.26									
Whitten Memo.		11.50									
Winchester	160.00	26.76									
Woodstock		16.40									
Association		2,133.30									
SOUTHWESTERN DISTRICT				TENNESSEE VALLEY				WEAKLEY			
Eagle Creek		4.16		Bethel		108.71		Adams Chapel	54.00	56.25	
Flatwoods		16.10		Bogles Chapel		25.55		Beech Springs		27.70	
STEWART				Coulterville	10.00	15.00		Bethel	314.87	51.32	
Big Rock	118.50	140.76		Dayton	300.00	407.40	425.00	Bethlehem		21.55	
Carlisle		5.00		Evensville		41.00		Bible Union		25.00	
Corinth	7.50	20.00		Garrison		75.16		Calvary	49.25		
Dover	104.48	131.00		Grandview	15.00	20.00		Central	640.00		100.00
Fairview		5.00		Lake Drive	35.04	30.20		Corinth	12.50	28.08	
Model	92.01	76.58		Liberty Hill		5.00		Davis Memorial		27.90	
Nevils Creek	15.00	11.00		Mt. Vernon	15.47	110.78		Dresden	450.00	124.22	100.00
Pugh Flat		25.05		New Union	60.14	54.15		Gearins Chapel		50.00	
Association		20.00		Ogden		25.00		Gleason	201.21	72.50	2.00
STONE				Sale Creek		21.55		Greenfield	139.00	148.36	
Algood Mission	81.23			Salem	75.96	164.35		Hodges Chapel	29.50		
Bear Cove		25.00		Smyrna		43.00	25.50	Jolley Springs	30.01	50.50	
Brotherton		7.50		Spring City	205.00	515.60		Macks Grove		12.10	
Cane Creek	60.00			St. Clair		34.50		New Hope	56.35	82.99	
Caney Fork		49.64		Tennessee Valley	109.60	47.46		New Salem	3.00	36.68	
Cookeville	753.35		224.60	Waldens Ridge	24.63	10.00		Northwestern		6.06	
				Wolf Creek	37.59			Oak Grove	90.00	34.58	
				Yellow Creek	24.85	30.85		Palmersville	32.06	20.50	
				TRUETT				Pleasant Grove	45.00		
				Cedar Grove	15.33	10.25		Pleasant View		44.00	
				McEwen	50.00	20.00		Public Wells		56.00	
				Oak Grove	17.75	23.34		Ralston	50.00	50.00	
				Sylvia	38.94	7.05		Ruthville	21.00	13.00	
				Waverly	45.37	62.25		Sand Hill		10.00	
				UNION				Sharon	90.26	80.12	
				Boiling Springs							

East STATE Briefs

by Lloyd T. Householder, Maryville

Grove City Church, Knoxville, moved into its new educational building January 3. The building provides space for a kitchen, five new departments, 35 classrooms, pastor's study and secretary's office. Willie Hubbard is pastor.

Smithwood Church, Knoxville, has called Miss Ann Christenberry as educational director. A native of Knoxville, she attended Wake Forest, College.

Harold Cole, Student Union secretary for South Carolina, spoke at South Knoxville Church, January 24.

Immanuel Church, Knoxville, had a week-end youth revival January 29-31. Preaching was by Jim Pitts and music was led by Herschel Creasman. These young men are students at Carson-Newman College. There were 13 additions to the church, 10 by baptism, 3 by letter. March 7 the church will observe its Golden Anniversary.

Wilder Church, Knoxville, which began as a mission sponsored by Bell Avenue Church and organized into a church August 2, 1953, has ordained six deacons. They are William Burnette, Wilburn Cate, Daryl Freeman, Robert Campbell, Clarence Burkhart and William Conner. Earl A. Jones is pastor.

Miss Olivia Farmer, secretary in Knox County Association office, has been elected as director of the Goodwill Center in Western Heights, a new project established by the association.

In January 641 members signed tithers cards at Bell Avenue Church, Knoxville.

W. M. Egerton taught his book, "The Functioning Deacon in a New Testament Church" at Alice Bell Church, Frank Boston, pastor.

Youth Week was observed by Arlington Church, Knoxville, February 7-14. Jim Pitts of Carson-Newman College was speaker on Sunday morning and Ted Schwanger, a ministerial student at the University of Tennessee and a star on the football team, spoke at the evening service.

The bulletin of Park Lane Church, January 17, was dedicated to Mrs. Leona Gresham and Miss Marjorie Miller in appreciation of work done in connection with the church library.

Block City Church, Holston Valley Association, has called Wallace Starr as pastor. Mount Pleasant Church has called Ollie Lawson.

We are grateful for a copy of the bulletin of Nolachucky Association filled with interesting news concerning the progress of our Lord's work. Herman King is missionary.

Lowell Milburn, Newport, will be the evangelist in a revival at Russellville Church, beginning March 15.

First Church, Bluff City, experienced a good revival in which the preaching was done by C. B. Pearson of North Bristol Church and the music was led by J. Z. Leonard, Bristol. There were 30 additions, 27 by baptism, 3 by letter, and one dedication to definite service. Pastor Trewhitt Cox reports new records in attendance and gifts to the Cooperative Program have doubled in the last two years. A new educational plant accommodating 500 in Sunday school will be ready for use in the Spring.

McMinn Association Preacher's School was held at First Church, Athens, with Charles Ausmus, Knoxville, and J. Carl McCoy, Memphis, as speakers. This association will have an evangelistic conference, February 26, with the following as speakers: Leonard Sanderson, Ansell Baker, David Livingstone, Harold Malone, James E. Byler, Leonard Stafford, Rev. and Mrs. M. K. Cobble, and F. M. Dowell, Jr.

January 10, Livey C. Cope, pastor of East Lake Church, Chattanooga, left for Anchorage, Alaska, to be engaged in a series of services for service men.

January 31, First Church, Jellico, observed M. Garfield Hardin Day. Mr. Hardin has been secretary of the Sunday school 40 years. During many of these years he had a perfect record of attendance. In these years he has attended Sunday school more than 2,000 times. He has served as deacon 35 years. In appreciation for his faithful service the Sunday school presented him with a 21 Jewel Elgin watch. Letters of appreciation from former pastors were read in the service.

James Queen, formerly pastor of Mount Harmony Church, Polk County, has been elected as missionary in Polk County Association.

Sweetwater Association had a Preacher's School at First Church, Madisonville, February 15-19. Harold Malone, Madisonville and David Livingstone, Sweetwater, were speakers.

February 7 Red Bank Church, Chattanooga, observed "Norton Appreciation Day" in honor of Pastor Ralph Norton on the sixth anniversary of his work with the church. The bulletin for that day carried the picture of Dr. Norton and gave a comparative statement of the work six years ago and now.

The week of February 1, Carl Giers, Chattanooga, was speaker for Religious Emphasis Week at Mississippi College.

Sunday, February 10, was the tenth anniversary of the Everett Hills Church, Maryville. On this day the following were ordained as deacons: Vance Walker, Orbin Patterson, Clarence Baker, Harry Kidd and Cecil Headrick.

Pastor J. L. Stafford has just observed his fifth anniversary as pastor of South Harriman Church, Harriman. The Sunday school enrollment has increased from 333 to 772 and total contributions from \$8,746.22 to \$20,723.81, with 530 additions to the church.

Kinzel Springs Mission, a new project being sponsored by Chilhowee Association, had its first services on Sunday, February 7, with 38 present for Sunday school. Clyde Cobb, associational missionary, will conduct the services for the present.

	Cooperative Program	Designated and Reported	Foundation
Kelleys Creek	---	47.18	---
Kirklands	---	3.00	---
Lexie	---	9.20	---
Macedonia	39.90	12.69	---
New Grove	30.00	7.58	---
New Hope	87.14	---	---
Oak Hill	5.00	5.00	---
Park City	37.50	---	---
Petersburg	---	40.25	---
Pleasant Grove	15.00	---	---
Pleasant Hill	---	22.37	---
Pleasant Ridge	10.00	10.00	---
Prospect	5.00	5.25	.75

WILSON

Alexandria	419.80	---	---
Bartons Creek	189.76	63.36	---
Cedar Creek	50.00	25.00	---
Cedar Grove	18.71	90.56	---
Chandler	10.00	37.50	---
Fairview	346.83	32.70	---
Fall Creek	---	140.00	---
Gladeville	57.66	79.94	---
Greenvale	28.10	50.00	---
Hurricane	---	32.29	---
Immanuel	371.20	132.20	---
Lebanon	900.00	18.00	---
Little Cedar Lick	23.23	50.00	---
Mt. Juliet	525.18	48.65	1.00
Mt. Olivet	48.79	27.50	---
Prosperity	328.19	100.90	---
Ramah	---	5.50	---
Rocky Valley	61.73	47.22	---
Round Lick	150.00	92.31	---
Rutland	---	15.00	---
Shop Springs	377.90	129.44	---
Silver Springs Mission	25.18	---	---
Smithfork	58.91	36.96	---
Watertown	249.78	36.25	---
Association	---	15.45	---

MISCELLANEOUS

Emory Heights	---	50.00	---
Friendship	---	19.14	---
Pierce	---	10.00	---
Piney Flats	---	12.00	---

PRINTING
of Every Description
at Money-Saving Prices
Write us at 412 Demonbreun Street—or
call 42-6594... Nashville 3, Tennessee
CURLEY PRINTING COMPANY

BROTHERHOOD DEPARTMENT

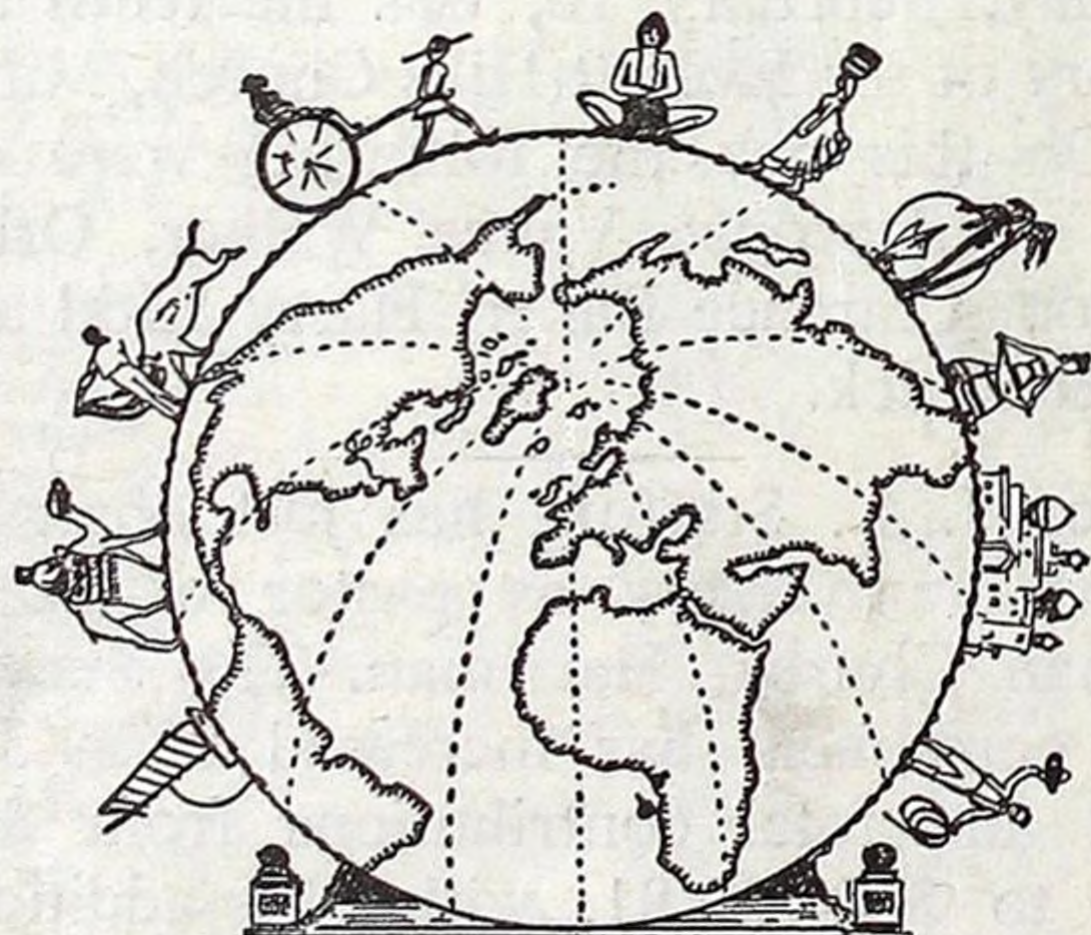
The Cooperative Program

This quarter—January, February, March—our associational Brotherhoods are using as their theme, "The Cooperative Program." The purpose of this theme is to acquaint the men with the Cooperative Program and to challenge them to a fuller support of the program. The Cooperative Program is the best method yet discovered by our churches for carrying out the Great Commission of the Lord Jesus Christ to send the Gospel to the ends of the earth. There are many references in God's Word which tell us that we should give through the Cooperative Program. As we read Matthew 9:35 this should make us realize the need, "And Jesus went about all the cities and villages, teaching in their synagogues, and preaching the gospel of the kingdom, and healing every sickness and every disease among the people."

The Brotherhood has four major objectives each year. These objectives for 1954 are: Evangelism, Stewardship, Cooperative Program, and Boys' Work. COOPERATIVE PROGRAM . . . For the individual church member, the Cooperative Program is an opportunity for him to share in all mission, education and benevolent work of the denomination. For the church, it is an opportunity to share in all Baptist causes. For the denomination, it is a procedure through which all agencies and institutions can receive adequate support.

Study These Suggestions

Mission Fields and Needs . . . Programs dealing with study



WORLD ADVANCE

of home and foreign mission fields and current needs. Local tours of church and associational mission projects. Study the facts and figures of major denominational missionary endeavor on a comparative basis. Cooperate with W. M. U. in mission weeks of study.

Denominational Institutions and Agencies . . . Study of each agency and institution

who are beneficiaries of the cooperative program in somewhat the following manner: Location, size and nature of work. Contribution made to Southern Baptist work. Manner of support, present status, needs.

Church and Denominational Finance and Promotion of Baptist Foundations . . . Educational program by the Brotherhood to familiarize men of church with the plan and method of the Cooperative Program. Active promotion of State and South-wide Baptist Foundations. Conduct endeavors to secure tithe and a unified budget.

Increased Proportion of Church Receipts Through Cooperative Program . . . Hold associational and regional Brotherhood meetings where State and Southern Baptist agencies are located to acquaint men with institutions receiving cooperative program funds. Programs on Baptist Foundations and the future of our denominational institutions. Study of world needs and local needs in relationship to the local church budget and financial ability of the church membership.

Bulletin #47—Volume #2

SUBJECT: APRIL-MAY-JUNE, BROTHERHOOD JOURNAL

For your information, the April-May-June, 1954, issue of the *Brotherhood Journal* will contain major articles on the following subjects.

"Witnessing for Christ Through Christian Homes" Joe W. Burton
"What Baptists Believe about Baptism" . . . J. Winston Pearce
"Churches Helping Youth Face the Military" . . . E. L. Ackiss
"Using Men in Enlarging Our Teaching Ministry" . . . C. L. McKay
"Witnessing for Christ in Mexico" . . . Orvil W. Reid
"Trials and Triumphs Among the Indians" . . . B. Frank Belvin
"Medical Missions in South America" . . . F. T. Fowler
"How Baptists Work Together" . . . J. W. Merritt
"Using the Brotherhood in Evangelism" . . . C. Wade Freeman
"Strengthening the Work of the Church Through the Brotherhood" . . . S. R. Woodson
"Witnessing to Our Jewish Friends" . . . Frank Halbeck
"Spreading the Word Through the American Bible Society" . . . Thomas T. Holloway
"The Church Brotherhood Cooperating with the Associational Brotherhood" . . . David T. Mashburn

I am sure that you will agree with me that these articles written by such outstanding writers will enable us to present to our Brotherhood constituency some timely and important reading and discussion material.

The one-day clinics on Evangelism and Stewardship conducted by the departments of Evangelism and Promotion and the Brotherhood are increasing in attendance and interest. We note from Dr. Porter Routh's statement that the Cooperative Program receipts for January increased \$9,400.00 in the state of Tennessee over and above last year. This in spite of an admitted recess in business over that period of time.

If this is a result of the Stewardship Schools conducted October 18-25, then we need to conduct more Stewardship Schools. We have only one-fourth of the churches in the state of Tennessee which have yet conducted schools of Stewardship. The churches which have not conducted Stewardship Schools will miss a blessing if they do not conduct such a school. These churches which have conducted schools can look forward to a Stewardship Revival this fall.

Suggested Program for Brotherhoods

Scripture Reading and Prayer . . .

Song

History of Cooperative Program . . . Ten Minutes
Why the Cooperative Program . . . Ten Minutes
Cooperative Program and Foreign Missions . . . Ten Minutes
Cooperative Program and Home Missions . . . Ten Minutes
Cooperative Program and State Missions . . . Ten Minutes
Cooperative Program and Benevolents . . . Ten Minutes

A. Roy Greene, President of the Tennessee Baptist Convention, and E. N. Delzell, Brotherhood Secretary for the state of Tennessee, spoke in seven Baptist churches in the Campbell County Association including a Brotherhood Associational meeting Sunday, February 14th.

Bulletin #3

SUBJECT: NEW TRACT, THE ASSOCIATIONAL BROTHERHOOD CLINIC—WHAT? WHY? HOW?

You might be interested to know that the procedure in this tract was recently used in an association-wide clinic in the Shelby County Association. Lay leaders were used as clinicians. The clinic was enthusiastically received and already church Brotherhoods here are insisting that it become an annual affair. Every associational Brotherhood officer should have a copy of the tract as soon as possible to begin planning for the clinic. The presidents of church Brotherhoods receiving a copy of the tract would become a factor in encouraging the establishing of the annual clinic.

