

Baptist and Reflector

Vol. 144/No. 8/February 23, 1978

News journal of Tennessee Baptist Convention

Program losses noted

Church membership in SBC tops 13 million

NASHVILLE—Southern Baptist Convention church membership topped 13 million for the first time in the denomination's history in the 1976-77 year, but losses were recorded in the number of baptisms and in enrollment for Sunday School, church training, Woman's Missionary Union and Brotherhood.

The latest statistical reports show that church music was the only church program organization to experience a gain during 1976-77. Total membership, number of SBC churches, mission gifts and total receipts also increased. SBC foreign mission work, not counted in SBC statistics, reported increases in membership, baptisms and churches.

The annual statistical report, compiled by the research services department of the Southern Baptist Sunday School Board, was taken from reports of 34,849 Southern Baptist churches.

The total number of churches in the SBC increased by 0.5 percent, to 35,255, an increase of 182. The total includes 406 non-reporting churches.

Church membership in the SBC went up

1.2 percent, (160,594), to 13,083,199. Resident membership was reported at 9,443,431.

Baptisms in the SBC dropped by 10.1 percent, a decrease of 38,806. The 345,690 baptisms was the lowest number in the SBC since 1949.

Total receipts for the convention increased by 9.2 percent, more than \$151 million, to a total of \$1.8 billion. Mission gifts went up by 10.3 percent, almost \$27 million, to a total of nearly \$290 million.

Porter W. Routh, executive secretary-treasurer of the Southern Baptist Convention's Executive Committee, said he was "encouraged by the continued climb in churches and the gain in membership but disturbed over the 10 percent drop in baptisms for the year."

Routh said "concern for Bold Mission Thrust is demonstrated by total missions gifts of \$290 million, with the percent of the collection plate dollar for missions climbing from \$17.0 in 1976 to 17.1 in 1977." Bold Mission Thrust is the SBC emphasis to evangelize the world by the year 2000.

The decrease in Sunday School enrollment of 0.4 percent represented a loss of more than 27,000 members, resulting in a total enrollment of 7,430,931.

Church training enrollment was off 3.9 percent from the 1975-76 total, to an enrollment of slightly less than 1.8 million, reflecting a loss of 72,227.

Woman's Missionary Union (WMU) enrollment dropped by 1.8 percent in 1976-77, a loss of 20,949 to a total of 1,118,085, while Brotherhood enrollment dropped 1.2 percent, or 5,672, to a total of 473,309.

In church music, the 0.7 percent increase of 9,506 brought the total enrollment to 1,382,104.

Sunday School continued to lead in the number of churches reporting an ongoing program, with a total of 34,363. Church music was reported in the second highest number of churches, with 23,428, followed closely by WMU with 23,047. Church training was reported in 21,265 churches and Brotherhood in 15,359 churches.

The uniform church letters also reported 756 church type missions and 612 other type missions started during the 1976-77 year. More than 1,000 churches reported some kind of ministry to mentally retarded persons, with a total enrollment of almost 9,000. Deaf classes have an enrollment of more than 10,000 persons in 681 SBC churches, and church libraries were reported in 18,000 churches. (BP)

RA Congress location changed to Nashville

The location of the 1978 Tennessee Royal Ambassador Congress, scheduled to be held March 24-25, has been changed from Memphis to Nashville, according to Archie King, state brotherhood director. Two Rivers Church will host the congress.

King stated that information regarding the congress should be received by local RA counselors this week.

Although a complete slate of speakers has not been finalized, plans call for a parade of flags; associational, home, and foreign mission booths; campcraft rodeo; speakout; service aide awards breakfast; pinewood derby; sports events; and a mission fair.

Boys in grades 1-12 are eligible to attend. King stressed that advanced reservations should be made through the Brotherhood department as soon as possible.

Maryville associate pastor accepts call to Jonesboro

John Carpenter, associate pastor at Maryville First Church since December 1972, submitted his resignation there this month in order to accept the pastorate of Jonesboro First Church. He is scheduled to preach his first sermon in Jonesboro on March 12.

A native of North Carolina, Carpenter is a graduate of Mars Hill College (N.C.). He earned the master of divinity and doctor of ministry degrees from Southern Baptist Theological Seminary. The Southern seminary graduate also served as volunteer Baptist Student Union director at Maryville College in 1973-74.

HMB sends funds to three states

ATLANTA—In response to the devastating blizzard in several states, the Southern Baptist Home Mission Board has sent \$10,700 in disaster relief funds to Kentucky, New York, and Massachusetts.

The Kentucky Baptist Convention's state coordinator of disaster relief, A. B. Colvin, received \$4,500 from the HMB department of Christian social ministries assigned responsibility for dispersing relief funds.

The Baptist Convention of New York received \$5,000 requested by Jack Lowndes, executive secretary of the convention, for relief of individual needs.

Ada Young, Christian social ministries director in Northboro, Mass., received \$1,200.

The relief funds were the first sent by the HMB in 1978. (BP)

Pigeon Forge picked as site for meeting of career Baptist women, March 17-19

Baptist women who are employed outside the home will have an opportunity to participate in Tennessee's third annual conference for career women, March 17-19, at Smoky Shadows Conference Center in Pigeon Forge.

The Career Baptist Women's Conference will be held simultaneously with the Baptist Young Women's Conference which is scheduled to be hosted by Pigeon Forge First Church. According to Mary Jane Nethery, executive secretary-treasurer, WMU, most of the leaders involved in the BYW Conference will also participate in the career meeting.

The first session will begin on Friday evening at 7:45. Saturday sessions will begin

stationed with her husband, James, in Rio de Janeiro where she is editor of the Brazilian WMU magazine. The emphasis of her meditations will be "They That Wait Upon the Lord Shall Renew Their Strength."

Lay involvement in missions on Friday night will focus on Christian Service Corp, special mission projects, Christian social ministries, and Big A Club. Leaders scheduled include: Paul Hall, missions department, TBC; Linda Knott, state WMU office; and Clifford Horne, Nashville Baptist Association.

Robert Fling, retired home and foreign missionary, will speak on "Power To Share in Home Missions" at the Friday evening session. Horne will focus on work in the



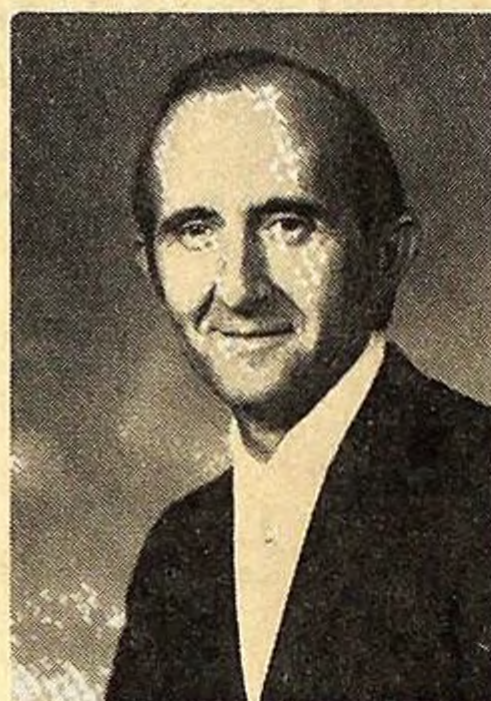
Fling



Grober



Kirk



McKinley

at 9 a.m., 1:30 p.m., and 7:30 p.m. The final meeting will convene Sunday morning at 9:00.

Maxie Kirk, missionary to Brazil, will bring the meditation at each session. Kirk is

Nashville area on Saturday morning; and Jim and Betty McKinley, missionaries to Bangladesh, will share the work in their country. At the Sunday morning session, Glendon Grober, professor at Equatorial Baptist Theological Seminary, Belem, Para, Brazil, will speak on "Power To Serve in the World." James Kirk will explain the program of bold missions during the same session.

Conferences in foreign missions will include Bangladesh, Brazil, and Munich.

Special music will be brought by Jannie Engelmann, WMU office, Brentwood.

Advanced registration should be made through the WMU office in Brentwood before March 4, Nethery said.

SBC missionaries attend Thai king's reception

CHACHEUNGSAO, Thailand — Three Southern Baptist missionaries were invited to join leaders of all religious faiths in an audience with the king of Thailand recently, on the eve of his 50th birthday.

Attending the occasion were Bobby L. Spear, mission administrator; Max N. Alexander, business manager; and Fanny Starnes, treasurer. They were received in the visitors hall at the Chitlada Palace, residence of the royal family.

Rites held in Memphis for missionary daughter

Doreen Margrett Berry (Mrs. Bailey H.), daughter of Anne S. Margrett, missionary emeritus to Argentina, died in Memphis Feb. 15. She was 42.

In addition to her missionary mother who resides in Memphis, Berry was the granddaughter of the first Southern Baptist missionaries to Argentina, Mr. and Mrs. S. M. Sowell; and the great granddaughter of the first Southern Baptist missionaries to Brazil, Mr. and Mrs. W. F. Bagby.

Funeral services were conducted at Memorial Park Funeral Home in Memphis on Feb. 16. Officiating were Fred Wood, pastor, Eudora Church in Memphis; Joe Littlefield, pastor, Whites Station Church; and William H. Berry, father-in-law of Mrs. Berry and a missionary emeritus to Brazil. Burial was at Mt. Vernon Gardens in Memphis.

Survivors, in addition to her husband and mother, include a son, Michael J., and a daughter Elizabeth Anne.

150 from Tennessee included in SWBTS record enrollment

FORT WORTH, Tex.—One hundred and fifty students from Tennessee are among 3,321 students enrolled at Southwestern Baptist Theological Seminary for the spring semester.

This is the 11th consecutive year in which spring enrollment has been up. The figures reflect a seven percent increase over last spring's enrollment. The total includes 312 new students.

By schools, the enrollment distribution was: theology, 1,981; religious education, 1,048; and church music, 292.

The top 10 states were Texas, 1,254; Oklahoma, 239; Florida, 175; Georgia, 163; Tennessee, 150; Alabama, 142; Louisiana, 129; Arkansas, 124; Mississippi, 92; and North Carolina, 92.

Tokyo church baptizes six from six different nations

TOKYO, Japan—In one recent baptismal service, Tokyo Baptist Church baptized six young people from six different nationalities, reports Lois Whaley, Southern Baptist missionary press representative.

The church's missionary pastor, Marion F. Moorhead, baptized a housewife from England and an embassy employee from Holland. From Africa there was the son of the ambassador from Tanzania.

A young Japanese scientist, an expert in ancient languages who had just heard God's call to preach, the daughter of New Zealand missionaries to Japan, and the son of an American businessman, rounded out the international group.

CIRCULATION THIS ISSUE—78,349

Baptist and Reflector

Established 1835
Post Office Box 347, Brentwood, Tenn. 37027
Phone: (615) 373-2255

Alvin C. ShackelfordEditor
Eura LannomAssistant to the Editor
Bobbie DurhamEditorial Assistant

Published weekly except Christmas week by the Executive Board of the Tennessee Baptist Convention at Brentwood, Tennessee, (Post Office Box 347) 37027. Subscription prices: \$3.75 individual; clubs of ten or more, \$3.40; church budget, five and one half cents weekly when sent to 50 percent or more of church homes. Second class postage paid at Brentwood, Tennessee, and at additional mailing office.

Space forbids printing of resolutions and obituaries. Advertising rates on request.

Member of Baptist Press (BP) news service of the Southern Baptist Convention.

News-Journal of Tennessee Baptist Convention
Ralph E. Norton, Executive Secretary-Treasurer

BOARD OF DIRECTORS: George Capps Jr., chairman; C. Henry Preston, vice-chairman; Gayle Alexander, William E. Crook, John Daley, Jim Dusek, Charles D. Earl, Ray Fowler, Hayward Highfill, Howard Kolb, Pat Landrum, Mrs. R. Trevis Otey, J. Arnold Porter, Paul Shell, Bill Sherman, Gerald Stow, and Herschel Woodburn.

Baptists protest new Israeli law

JERUSALEM, Israel—Baptists across Israel continue to react sharply to recent legislation which has the potential to limit Christian activity and endanger religious liberty.

Under the provisions of the December 1977 law, it will be illegal, as of April 1, 1978, to offer or receive material inducements to change religions.

Fuad Sakhnini, chairman of the Baptist association of churches and pastor of Nazareth Baptist Church, said, "Of course we are against any kind of material enticement to be given to people. But," he continued, "everything we do is done to influence people for the gospel, including preaching, teaching, and helping. The difficulty lies in the interpretation which may be given to this aid. If it is interpreted that preaching the gospel is against the law, then we are ready to go to jail rather than to stop preaching."

Southern Baptist representative Dale G. Thorne adds: "Actually we are not interested in inducing people to change religion. Our interest is in introducing them to Christ. I don't feel that a person can be truly influenced to accept Christ by physical enticements."

"But the problem of this law is its disparaging attitude toward the Christian message," Thorne continued. "We are commissioned to spread the Christian message. There's possible danger of restricting freedom of Christians and people of all religions."

Robert L. Lindsey, Southern Baptist representative in Israel, said the intention of those who proposed the new law was "to give legal grounds for further intimidation of the Christian citizens and residents in Israel."

The Israel Baptist Mission (organization of Southern Baptist representatives known locally as the Baptist Convention in Israel) and the association of Baptist churches have cooperated with the United Christian Council in its efforts to point out dangers of the law. The 20-member body believes the law offers opportunity to trap Christians and accuse them of bribery. (BP)

Hicks thanks Alabama Baptists for providing child care

A retired Tennessee pastor, Hudson Hicks, wrote an article for a recent issue of the **Alabama Baptist** expressing thanks to that state's Baptists for their Children's Home at Troy. Hicks lived in that home from 1914 until 1926.

Hicks was pastor in Tennessee for 35 years, including Whiteville, McKenzie, Covington, and 20 years at First Church, Morristown. He presently is serving as interim pastor of Russellville Church.



SCHOLARSHIP FUND—Mr. and Mrs. J. D. Thomas (center) presents \$100,000 for a Carson-Newman College scholarship fund to A. P. Minshew (right) and Edward Glover of the college staff. Thomas died shortly after the gift was made.

Thomas starts scholarship fund

JEFFERSON CITY—Shortly before his death in January, J. D. Thomas and his wife, Mildred, presented a \$100,000 gift to Carson-Newman College. The gift has been added to a scholarship fund which was established earlier by the Thomas family in their name.

Thomas was a native of Sevier County. In 1916 he moved from Madisonville to Johnson City where he spent 62 years as a merchant. His life has been described as being strongly influenced by his loyalty to his family, to his church (Central Church),

and to his personal Christian philosophy and convictions.

Thomas started the first Gideon camp in Johnson City.

Among contributions made to religious causes, Thomas gave the Johnson City Baptist Church the land on which it is situated. On one of his trips to Daytona Beach, Fla., he purchased a synagogue and gave it to the Open Door Mission for the care and rehabilitation of alcoholics.

The establishment of a scholarship at Carson-Newman College reflects his interest in Christian education. It is estimated by friends that through the years the Thomases have helped over 60 young people to earn their education.

In discussing his view of Christian stewardship several years ago, Thomas remarked that such assistance had never cost him a dime, because God prospered him every time.

Arrangements for the \$100,000 were handled by A. P. Minshew, C-N vice-president for development.

Belmont receives grant from west coast corp.

Wayne Robbins, vice president of Belmont College, has announced that a sizeable grant was received by Belmont from the Getty Oil Company in Los Angeles, California. It is the first corporate gift Belmont has ever received from the west coast, Robbins said.

The grant was given toward the construction of Belmont's proposed student center. The gift is in conjunction with the current Silver Anniversary Campaign, which is designed to raise funds for the completion of this significant building project.

A guest room in the new student center will be named "The Getty Room" to commemorate the corporation's support in the campaign.

The student center, when completed, will climax a long-range building program begun in 1964. Since that time seven major buildings have been constructed at a cost of nearly \$9,000,000, all of which came from the private sector.

Baylor alumnus gives stocks valued at \$1 million to school

WACO, Texas—Houston area businessman Milfred L. Lewis has donated stocks valued at \$1 million to Baylor University, according to Tom Z. Parrish, Baylor vice president for development.

Lewis donated 35,693 shares of stock in the Equipment Renewal Co., Houston, valued at \$1 million. Lewis is manager and former owner of the equipment company.

He and Mrs. Lewis both received bachelor of business administration degrees from Baylor in 1955. Their son is a Baylor freshman majoring in pre-law.

HMB designates office, staffer to assist bi-vocational pastors

ATLANTA—A consultant to work with bi-vocational pastors was named by directors of the Southern Baptist Home Mission Board during their February meeting.

J. T. Burdine Jr. will become rural-urban field consultant assigned to work with the nearly 10,000 Southern Baptist ministers who work in secular employment but also serve as pastor of churches. Burdine, a board staffer for two years, resigned as associate director of the department of the board's rural-urban missions to accept the newly created position.

In other action, directors appointed 27 persons to missionary service, including seven missionaries, 12 missionary associates, and eight pastors to receive financial aid.

William G. Tanner, the board's executive director-treasurer, said of Burdine's new assignment: "We are very excited about this new position. There's not a more needed or opportune area in the Southern Baptist Convention than work with bi-vocational pastors. Nearly 30 percent of the 35,000 churches in the convention are pastored by men who earn their living at other work and pastor in what we would call their spare time. Until now we have not had a program directed toward assisting these men."

James Nelson, director of rural-urban missions, said he believes the SBC is entering an expansion period, and sees bi-vocational pastors serving a crucial role in establishing and ministering through new congregations. "New churches are going to be started and Southern Baptist denominational agencies cannot support them. There's only one answer and that's the bi-vocational pastor," he said.

Burdine will work primarily in the target area of Georgia, North Carolina, South Carolina, Tennessee, and Alabama, which contains a high concentration of bi-vocational ministers. "The first thing I plan to do is to listen to what the people in the field have to say about their needs," Burdine

said. "We will work to develop support for these ministries."

Lloyd Corder, director of the board's division of associational service, said, "There once was a time in which it was thought that every church would have a full-time, seminary-trained pastor. That's simply not the case. A need to work with these men who are bi-vocational has surfaced and we want to work with them." Corder indicated Burdine will attempt to assist them through cooperative efforts with the Baptist Sunday School Board and the SBC's Seminary Extension Department.

Before joining the Home Mission Board, Burdine was director of missions for the Eastern and Western associations in North Dakota in 1975 and 1976. He also directed missions for North Dakota and Northeast Montana, serving with the Northern Plains Baptist Convention from 1968 to 1975. (BP)

Film on Jesus' sex life stopped; book possible

WASHINGTON—An aide to U.S. Sen. Mark O. Hatfield said the Danish filmmaker who has sought unsuccessfully to produce a movie on the alleged sex life of Jesus in several foreign countries has also failed to find a producer in the United States.

Tom Getman, legislative aide to the Oregon Republican, told Baptist Press that the filmmaker, Jens Thorsen, has turned his objective to finding a book publisher who would agree to publish a script of the film in book form.

Thorsen has failed to have the obscene film, "The Many Faces of Jesus," produced in such nations as Britain, Israel, and Denmark. If made, the film reportedly would depict Jesus as having been sexually active in both heterosexual and homosexual relationships.

Hoping to find refuge in the United States Constitution's guarantees of free speech and free press, Thorsen came to this country some time ago, but has had no success.

HEW secretary defends Carter stand on parochial education tax credit

WASHINGTON—Joseph A. Califano Jr. defended President Jimmy Carter against charges that he lied to the Catholics during the 1976 campaign when he said that he, if elected, would work for federal funds for parochial schools.

The secretary of U.S. Department of Health, Education, and Welfare, who is a Roman Catholic, said that candidate Carter carefully chose his words relating to education aids to parochial schools. He said that Carter's pledge was limited by the restrictions placed on him by the U.S. Constitution.

The Carter campaign pledge relating to constitutional aid to parochial schools has been widely cited by Catholics as an endorsement of tax credits for those paying tuition in such schools. Sen. Daniel Patrick Moynihan, D.-N.Y., Roman Catholic, said that the president lied to the American people when he came out against tax credit proposals.

The Califano defense of the president came during hearings on the administration's alternative proposal for aid to middle class Americans with children in college. Specifically attacking tax credit aid to education, the Carter plan proposes a \$1.4 billion package of grants, work study and loans in fiscal 1979 to increase existing student aid programs. The Moynihan-Packwood proposal for tax credits is estimated to cost the government a minimum of \$4.7 billion.

The views of the Carter administration on aid to parochial schools were explained at a

joint hearing before the Senate Committee on Human Resources, chaired by Sen. Harrison A. Williams, D.-N.J., and the House Committee on Education and Labor, chaired by Rep. Carl D. Perkins, D.-Ky.

Hearings on the administration's proposal will be continued both in the Senate and House in a whirlwind effort to enact it into law before overwhelming support can be mustered for the Moynihan-Packwood tax credit proposal. The administration's proposal is designed to aid higher education only, while the Moynihan-Packwood Bill also includes elementary and secondary schools in an attempt at a break-through to aid parochial schools.

The HEW secretary explained that he had asked the attorney general for an opinion on the constitutionality of tax credits and that he had instructed lawyers in HEW to work on constitutional ways of aiding parochial schools.

The HEW secretary made it plain that "if Congress decides to add a tuition tax credit to the administration's proposed tax package, then the president will oppose substantial increases in appropriations for federal student assistance programs."

Many private school groups and the Roman Catholic education interests support the Moynihan-Packwood type of tuition tax credit aid to both elementary-secondary and higher education. The nation's public school educational organizations and religious liberty organizations, including the Baptist Joint Committee on Public Affairs and Americans United, oppose the proposal. (BP)

Baptist television program slated for ABC 'Directions'

FORT WORTH—"Mountaintop," from the Southern Baptist Radio and Television Commission's "The Human Dimension" series, will be seen on national television Sunday, Feb. 26, on the ABC program, "Directions."

"Mountaintop" is an anti-smoking film which includes "testimonies" from longtime smokers. They describe the damage to their health from smoking, and many offer excuses for not quitting. (BP)

Our People and Our Churches . . .

PEOPLE . . .

Mr. and Mrs. J. H. Smothers, Alexandria, celebrated their 61st wedding anniversary with all of their children, grandchildren, and great-grandchildren present. **Smothers**, who surrendered to preach at Salem Church in Trenton, has held numerous offices in associations where he has served. He pastored the following churches: Laurel Bank Church, Maryville; Bethel Church, Townsend; Boyd's Creek; New Hopewell in Knoxville; Eastland Heights in Springfield; Prosperity in Auburntown; and New Middleton.

Mr. and Mrs. Earl McGill, members of Alcoa First Church for over 40 years, celebrated their 50th wedding anniversary recently. The couple was honored at a reception in the church's fellowship hall. **McGill** served as Sunday School secretary for several years and was also a deacon. She served at one time as a teacher in preschool. The **McGills** are the parents of **Betty Williams**, bookkeeper in the Baptist and Reflector office in Brentwood. **Doug Sager** is their pastor.

Central Church, Johnson City, was scheduled to ordain **R. Willard Warfield** to the gospel ministry earlier this month. **Farrell Brown** presided over the service, with **Fred Witty**, **Ted Lindsay**, **James Harris**, **Lee Gray**, and **Roy Gorman** assisting. **Gray** led in the ordination.

Park Grove Church, Lawrence County Association, ordained **Larry Douglas Bunt** and **Ronald Glynn Perry** as deacons. **Bunt** is the son of **Cleo Bunt**, pastor of Macedonia Church, in the same association. The charge to the church was given by **Junior Roper**, pastor of Five Points Church, and the charge to the deacons by **John D. Bolton**, director of missions. **Kenneth Brewer** is pastor.

George Gibson, a minister of the gospel for over 65 years, died in Tullahoma recently. He was a member of First Church there. **Gibson** held pastorates in Kentucky, South Carolina, and Georgia, and was instrumental in raising funds for the Georgia Baptist hospital. He obtained his education from Mercer University (Georgia) and Newton Seminary (New York). According to Tullahoma pastor **James Porch**, **Gibson** was active in the church's program. Services were held from First Church. Burial was in Georgia.

LEADERSHIP . . .

Holly Grove Church, Haywood County Association, called **H. B. Woodward** as interim pastor. **Woodward** is from Bells.

Mike Dawson, pastor of Dalewood Church in Nashville for the past six years, was called as pastor of Central Church, Decatur, Ala. The move will be effective March 1. A native of Georgia, **Dawson** was a pastor in South Carolina before coming to the Nashville pulpit.

Malcolm Lee Barrett Jr. is the new music director at Whitsitt Chapel Church, Nashville. He is a graduate of Middle Tennessee State University where he was in the upper 12 percent of his class. In 1975-76 he was a member of the executive council of the Baptist Student Union, and in 1977 was witness director for the organization. **Marvin P. Nail** is pastor at Whitsitt Chapel.

William M. Tillman Jr. was called as interim director of music for Tulip Grove Church in Old Hickory, according to pastor **John W. Kurtz**. **Tillman** moved to Nashville to join the staff of the Christian Life Commission where he serves as director of research and editorial services. A native of Oklahoma, he recently completed Ph.D. residency work in Christian ethics at Southwestern Baptist Theological Seminary.

Ron Hammonds is the new minister of music at Bartlett Church, Bartlett. He served formerly as minister of music at Rugby Hills Church in Memphis. **F. Irvin Hays** is pastor.

C-N professor to write Sunday School lessons

Paul D. Brewer, chairman of the humanities division at Carson-Newman College, Jefferson City, will write the Uniform Series Sunday School lessons for the Baptist and Reflector for the next quarter beginning with the lesson for Sunday, Mar. 5.

Brewer received degrees from Carson-Newman College, Texas Christian College, and Southwestern Baptist Theological Seminary. He did further study at Union Seminary (N.Y.); Indiana University; Regius College, Toronto, Canada; and Oxford University.

He has served as pastor of several churches in Tennessee and Texas and has been at C-N since 1958.

He and his wife **Imogene** have three sons, **David**, **Don**, and **Dan**.



Brewer

Concord First Church called **Kevin Moore** as minister of youth education-activities. He is a graduate of William Jewell College in Liberty, Mo., and Midwestern Baptist Theological Seminary. **Joe R. Stacker** is pastor of the Concord church.

Madison First Church called **Ronald K. Brown** as associate minister of education and administration. A graduate of Michigan State University, he earned the master of divinity degree from Southern Baptist Theological Seminary. He also attended Carson-Newman College, and served as a student pastor while there. He also held pastorates in Michigan through the Home Mission Board. **Bob Hammer** is pastor of the Madison church.

CHURCHES . . .

Madison First Church has purchased two lots containing nearly an acre each, according to pastor **Bob Hammer**. The lots tie in with the church's corner property and will be used for future expansion.

REVIVALS . . .

Calvary Church, Oak Ridge, was led in a youth revival by evangelist **Tim Wilson**, Kennedale, Tex. There were 10 additions by baptism and over 100 dedications. **Don Long** is pastor.

Bowmantown Church, Holston Association, was led in revival by **John Perkins**, pastor of Pinecrest Church, in the same association. There were several rededications. **David Tydings** is pastor at Bowman-town.

Lawrence Hadley begins service with Springfield congregation

Lawrence Hadley, pastor of Stones River Church in Smyrna for the past three years, has accepted the pastorate of Oakland Church, near Springfield, in Robertson County Association. He is already on the new field.

Hadley, who held pastorates in Missouri before coming to Tennessee, succeeds **Audrey Minor**. **Minor** died in August 1977.

A native of Missouri, **Hadley** is a graduate of Southwest Baptist College in Bolivar (Mo.). While in that state, he was associational chairman of evangelism and held several other posts. He has served as church training director for Concord Association in Tennessee.

Trusting in God

By Thomas G. Smothers
Professor of Religion and Philosophy
Union University, Jackson, TN 38301

Background Scripture: Psalm 91

Focal Passage: Psalm 23

Psalm 23 is the classic song of trust in the Lord. Without doubt, it is the best loved of all the psalms. There are several reasons for its popularity.

First, there is its economy of language. The author was a master poet who had the wonderful ability to express great thoughts in few words. He used no more words than were necessary, and the words he used were exactly enough. Second, the word pictures which he painted are so clear and vivid that the reader can almost see the pastures of green grass and hear the soothing sound of the quiet waters. Third, the poet deals with a theme of universal interest, the never-failing and all-sufficient providential care of a loving God. Fourth, it is obvious that the song was written by one who had experienced God's providence personally and over a long period of time. This gives the song its authenticity, and the reader can find encouragement here because of the personal testimony of one who found that God can be trusted in every crisis.

In describing his experience of God's providence the psalmist used two of the most characteristic figures of Israelite society, the shepherd and the gracious host. The superscription assigns the psalm to David. Certainly there is no reason to question that the

psalmist was a shepherd because the psalm exhibits several features known best by shepherds.

Psalm 23:1-3

Notice that the psalmist does not write that the Lord is a shepherd, or that the Lord occasionally acts like a shepherd. With a directness that immediately gains the attention of the reader, he writes: "The Lord is my shepherd." Now that is what the world is waiting to hear from the Christian: the personal word of experience. The effective witness is one who gives testimony of what he knows to be true on the basis of his experience.

It was and is the task of the shepherd to tend to all the needs of the sheep. The shepherd had to have a wide knowledge of topography, geography, boundary lines, animal husbandry, use of weapons, and weather. He had to be able to provide fresh pasture or fodder for the sheep throughout the year. To be successful in this in Palestine was a fine achievement because of the relative scarcity of water and the seasonal rainfall. The shepherd needed to know the location of every place where some added moisture could provide sweet, green grass during the drier season.

Our psalmist writes that because the Lord is his shepherd, he suffers no lack at all: "He causes me to lie down in green pastures."

The shepherd had to know all the sources of water, especially if he was travelling on the fringe of the desert, as he often did following the rainy season. He would have charted in his head the locations of all wells and springs. He would know where standing pools of water would have soaked into the sandy soil, thus providing the source for a

new well which could be dug quickly. These would be sources of "quiet" water. Sheep do not prefer to drink from noisy, turbulent water. In providing green pastures and quiet waters, the shepherd could restore the vitality, literally "the life," of the sheep.

The figure of the knowledgeable shepherd is continued in the phrase: "the paths of righteousness." As applied to sheep, these are not paths of righteousness as opposed to evil paths, but rather the right and correct paths which can be safely travelled. When applied to humans the paths of righteousness do include the element of ethics. Just as the shepherd leads the sheep along safe paths through dangerous territory, so the Lord had led our psalmist to walk in upright paths.

The Lord has blessed the psalmist in these various ways for the sake of His name. In Old Testament thought a person's name was considered to be the sum of his character. Consequently, a person's name meant a great deal, and he had to be careful to live up to his name.

In the Exodus experience God revealed His name, and thereby revealed something of His nature. The revelation of His nature by means of His name was borne out in all of subsequent history. God was revealed as the Lord of salvation and providence. He provided all things needful for His people, not because of who they were, but because of who He is. God acts "for His name's sake," that is, in accordance with His revealed character. He is trustworthy and dependable in every respect. He does not change. This is the kind of God who meets us in His Word and in the midst of life.

Psalm 23:4

In times of peril the shepherd could be depended on to defend his sheep. His weapons were the sling, the staff, and the club, the last two of which are mentioned in our psalm. The staff was the long shepherd's staff with a crook at one end, and pointed and tipped with metal at the other end. The staff itself could be a formidable weapon (cf. Judges 3:31. The rod was a club tipped with a heavy ball of hardened pitch or asphalt. The shepherd was a valiant foe for any marauding animal, and the good shepherd was willing to lay his life down for his sheep.

Psalm 23:5-6

The second figure which the psalmist used to describe God's goodness is the figure of the genial host. Hospitality is legendary in the middle east. The host considered it an honor to prepare a meal on short notice for visitors. There was water for washing the feet. The guest of honor often had his head anointed with costly, sweet-smelling oil. The psalmist seems to say: there is no host like the Lord. No one can outgive the Lord. Because of who the Lord is, mercy and goodness pursue (not follow) the psalmist; he cannot get away from God's providence. The true home of his soul is the house of the Lord, and in His house he will dwell forever.



Winebarger
CHURCH FURNITURE
LYNCHBURG, VIRGINIA 24502

- ★ Pews
- ★ Cushions
- ★ Stained Glass
- ★ Chancel Furniture
- ★ Folding Chairs & Tables
- ★ Design & Renovation Service

Area Representative:
Don Sowder
115 Hardaway
Goodlettsville, Tenn. 37072
Telephone 615-865-1070

**Savings, Retirement Accounts
Auto & Personal Loans**
Baptist Employees Credit Union of Tennessee
P.O. Box 4536
Memphis, Tennessee 38104
901-276-5421

**Bulls Gap Baptist Church has 30
curved maple pews for sale. Call or
write Rev. Otto Giles, pastor. Bulls
Gap, TN 37711. Phone 615-235-5230.**

Martyr or Savior

By Marion C. Barnett, Pastor
Broadway Baptist Church, Knoxville, Tennessee

Basic Passage: John 18:1-27

Focal Passage: John 18:1-14

What Is Going On?

At the recent January Bible Study at Broadway in Knoxville, Dr. William Blevins said that the Children of Israel in the Old Testament and the Christians of the New Testament shared a common outlook about the role of God in human history. Both of them believed that what God is doing can be understood by looking at what is going on.

Dr. Blevins says that in his classes at Carson-Newman he frequently makes the distinction to his students between two questions: The first question is, what is happening? When we ask that, we're simply trying to find out what the facts are in any particular event. Those who follow the God of the Bible ask a second question, what is going on? This question goes beyond the facts of what is occurring at the moment and seeks to understand the underlying meaning of what a person sees, hears, and experiences.

This is the way we approach the question of Jesus' crucifixion. We ask not only what is happening, but also what is going on; that is, what was God doing in the death of Jesus Christ? For this reason our lesson has been entitled "Martyr or Savior." If we ask only what is happening, we may be tempted to conclude that a martyr was created when the leader of a new religious sect was crucified. However, if we go deeper and ask the question, what was going on, then from the perspective of faith and with the guidance of God's Holy Spirit we are able to proclaim that in Jesus God's salvation was being accomplished.

The Arrest

The arrest of Jesus is described in 18:1-11, and John centers his report of the events around the place, the officials, and the theology of what was happening.

We do not know the exact location of the Upper Room, but when Jesus left it He crossed the Kidron Valley and went into a garden area on a hill on the opposite side.

The Kidron Valley ran roughly parallel to the temple and once Jesus had crossed it and gone into the Garden of Gethsemane (the garden is not actually named in John's gospel), He and His disciples could look back upon the temple from its heights by the light of the full Passover moon.

Now Judas came with the various officials to make the arrest. Among those mentioned are a band of soldiers. This would refer to Roman soldiers especially procured for this

duty. Only they would have authority to make such an arrest. Next officers from the chief priest and the Pharisees are mentioned. These are the temple guards whose authority extends only to the precincts of the temple itself. This may seem a rather large group to send for the arrest of one man, but we must remember that Palestine was as full of terrorist groups then as it is today, and the authorities could never be sure what they might find when they moved to arrest an agitator.

The actual theological interpretation of Jesus' crucifixion begins in verse 11 with the words of Jesus Himself, "Shall I not drink the cup which the Father has given Me?"

When we examine the circumstances of the arrest in light of Jesus' statement it becomes apparent that He was not so much arrested as He gave Himself up. He initiated the conversation in verse 4 by asking whom the soldiers sought. He then identified Himself and gave Himself up to arrest. Verse 11 is the theological interpretation of what He has just done. It gives final focus to what He had said earlier in 10:17-18. He laid down His life for the sheep. No one takes it from Him, but He lays it down of His own accord, and if He has the power to lay it down, He has the power also to take it up again.

The Arraignment

The Politics of Jesus' legal arraignment is seen in verses 12-14. We note first that Jesus is taken to Annas for the initial questioning and charges rather than to the Roman governor, Pilate.

This clues us in to the fact that the arrest was the result of the political activity of a coalition within the Sanhedrin, a coalition of Herodians, Sadducees, and Pharisees. It was the Jewish authorities rather than the Romans who were threatened by Jesus and sought His arrest. Another thing claims our attention. We would expect Jesus to be brought to the High Priest as the most influential Jewish official. Instead, He is brought to a former High Priest, one Annas. Annas was actually the most powerful Jew in Jerusalem, the power behind the High Priesthood. He had formerly been High Priest in A.D. 6 when Quirinius appointed him. After his own High Priesthood, he had later succeeded in having each of his five sons appointed, and at the present time had secured the appointment of his son-in-law, Caiaphas. It is probable that when Annas himself decided what he actually wanted

done with Jesus he only then sent Him down to Caiaphas the High Priest (verse 24).

The issue in the minds of those who form the coalition seeking Jesus' arrest is expressed in verse 19. Here Annas questions Jesus "about His disciples and His teaching." This statement probably implies that they wanted to know the reason why Jesus was gathering disciples and teaching. What did He intend to do? Where was His work leading?

Jesus responds to this implication of sedition by reminding the High Priest that He has been teaching a short distance away in the temple for some time and that His entire teaching career has always operated openly from the Jewish synagogue. None of His intentions of His teaching about God are secret. It is almost as if Jesus were saying to the High Priest what He had frequently said to the Pharisees in His crowds, "He who has ears to hear, let him hear."

John does not report the details of Jesus' interrogation here, but he does graphically show us the result. One of the officers of the High Priest strikes Jesus with his hand. This means that he feels that Jesus has both insulted the High Priest and has blasphemed God, but again Jesus points to the openness and sincerity of His teaching by asking the official to either point out where He has done something wrong or explain why he has struck Him.

For a

RETREAT

you won't forget!

RESORT TO BROOKSIDE

If you are looking for a quiet, comfortable place in the Great Smoky Mountains to hold your next retreat; where you can enjoy fellowship in large motel rooms and cottages (some with fireplaces); where you can economize by preparing your own meals in fully equipped kitchens; a place discovered and enjoyed by other church groups . . . Brookside is your answer.

\$5.30

. . . per person, sleeping two per bed, including sales tax and meeting rooms to fit your needs. Rate applies as space available through May 31. For open dates, call . . .

BROOKSIDE

MOTEL & RANCH HOUSE

Phone (615) 436-5611

GATLINBURG, TENNESSEE

Graham honored by SBC agency, praises religious broadcasters

FORT WORTH, Texas—Evangelist Billy Graham, winner of the Southern Baptist Radio and Television Commission's highest award, cited radio and television as "one of the greatest factors in this nation's recent religious resurgence" when he addressed the ninth annual Abe Lincoln Awards program in Fort Worth.

Graham received the Distinguished Communications Medal from the Radio and

Television Commission which sponsors the national Abe Lincoln Awards for Broadcasters.

The evangelist was cited for "the Christian persistence with which he has raised his voice in presenting claims of Christ on the lives of many, undaunted by world disturbance, domestic turmoil, and political convulsion."

Previous recipients of the seldom-awarded medal are Mrs. Lyndon B. Johnson, the late Walt Disney, the late Edward R. Murrow, Frank Stanton of CBS, and Robert Sarnoff of NBC.

Graham called religious broadcasters "sincere people of integrity" but warned that "We are facing the dangers of the false prophets, the charlatans, and Elmer Gantry's who, in a relatively short time, could destroy the great privilege we have of using the air waves to proclaim the Gospel."

He also warned about the scramble for ratings and profits in secular broadcasting and refused to excuse the promoters of questionable language, explicit sex, and violence in programming who say "we only give the people what they want."

"My travels, my correspondence, my talks with people from all walks of life, the polls I read, all convince me beyond any shadow of a doubt that the majority of people are thirsting for a return to good, plain, old-fashioned decency," said the man just named America's most influential person in the field of religion.

"They know instinctively the times are out of joint. And they know a nation does not desert its moral underpinnings without incurring the most dire circumstances."

He challenged broadcasters to use, with increasing frequency and effectiveness, the facilities of radio and television to carry a message which society is hungering for.

Graham, whose ministry has spanned more than a quarter century, gave credit to radio and television for his longevity, when historically evangelists have had a peak ministry of about 10 years.

At the Abe Lincoln Awards Dinner, Richard M. Schafbuch of Denver's KOA stations and Charles Thornton Jr., general manager of WTRI radio in Brunswick, Md., received the two 1978 Abe Lincoln Awards for broadcasters. They were cited for outstanding service to the industry and to their communities.

G. Richard Shafto, retired president of Cosmos Broadcasting Corporation, Columbia, S.C., received the Vincent T. Wasilewski Founders Award, presented to an industry leader who has distinguished himself in raising the image of the industry in the eyes of the public. (BP)

Devotional

I don't have time

By Charles R. Baker

What a paradoxical age in which we live! We have more time-saving devices than ever before, but we seem to have less time for everything.

We have all been guilty of responding negatively when someone has sought a commitment for our time. It should be noted, however, that we have had all the time there has been. And each future day God gives us will contain only twenty-four hours. There will be no more time.

We then need to be most careful that we do not waste time for it can never be recalled. Each day should be used to the best advantage for God's glory. In Ephesians 5:16, the Scripture implores, "Redeem the time for the days are evil."

It is very easy to become so busy that we leave God out of our daily lives. This is apparent as we hear friends frequently remark, "I wish I had time to read my Bible and pray and witness." In this modern world propelled by speed and greed, we must recognize that we will never find contentment unless we take time for God.

Think of those years during which you missed so many opportunities to do something or say a word for the Lord. Then pause this very day and resolve to place Him first on your calendar. The Bible reminds us in the Book of James that "life is but a vapor," and in I Corinthians 7:29 that "the time is short." We need to live each day as if it were going to be our very last. God does not promise tomorrow. At the Judgment we will give an account of what we did with the days and hours of our lives.

What is life to you? Is it just time to be spent, or is it a precious gift from God? An unknown poet once expressed it this way. . .

Life itself can't give you joy

Unless you really will it.

Life just gives you time and space,

It's up to you to fill it.

Let us remember, only that which is done for God will last.

Baker is a vice-president of Baptist Memorial Hospital, Memphis, and serves as deacon and Sunday school teacher at Germantown Church.



Baker



It's Called
The Open Bible
for
good reasons

"It has opened up
my Bible study."



Join the
thousands

Who are discovering why
Thomas Nelson Bible Publishers
called it The Open Bible.
Get yours today. Priced from
\$14.95



BAPTIST AND REFLECTOR

brings you news first

Letters to the Editor...

Letters on any religion-related subject are welcomed. Letters of over 300 words will not be used. Other letters may be shortened at the discretion of the editor. No unsigned letters will be printed, but writer's name will be withheld for sufficient reason. Letters must contain complete address.

Christ, not institutions

Dear editor:

How to stifle Bold Missions in one easy lesson—just continue business as usual.

New goals demand new strategies. To go forward, our leaders should first realize how emphasizing the church runs into denominational barriers to evangelism.

With more exposure to the outside world, we would soon learn that unbelievers have an interest in Christ but not the Baptist church. Institutions turn men off, but God turns them on. The unconcerned, unknowing, and unreasonable churches have ample cause for resisting the church approach.

Bold Missions is a great idea. However, to broadcast "What Baptists Believe" is to butt our heads against denominational walls. Most people hide behind these barriers even though they may not be realistic excuses.

We could learn a profitable lesson from Independents that avoid church barriers by reaching out in the name of Christ instead of an institution. To make giant strides toward Bold Missions means our leaders and writers must change their Baptist terminology and talk to encompass the whole body of Christ. This does not involve changing beliefs, but rather putting into practice the spiritual unity most Baptists believe.

Philip Walsh
Rt. 4, Box 40
Murfreesboro, TN 37130

Prisoner saved, healed

Dear editor:

I would like to share with you some of the events which have taken place since you published a reprint of Woody Raymer's letter (Nov. 10).

I read his letter with interest, since I too am proud of our hospital and staff, but something else caught my eye and my heart. In the last paragraph he stated, "Somehow, I returned to my confinement with a small part of me still at the hospital, knowing I'm cared about!"

It said to me that he felt no one cared, and as I read and re-read his letter, God spoke to me and said to write him and tell him I love him! Naturally, the devil gave me a million reasons why I should not write a strange man in prison, so the article laid on my desk for about a week. One day I picked it up again to discard it when God said once again to write him and tell him God loved him. This time I obeyed.

I wrote Raymer telling him what God had laid on my heart, and after hearing from him, I asked my pastor to write him. In his second letter to us, he asked if we would visit him, and on Dec. 9, 1977, my pastor, Robert S. Markham, visited him and he was saved! This was just the beginning of many miracles to be performed in his life. When he returned to see his doctor, he learned he had been healed; his lungs were well! Also, God has taught him how to be happy there in his cell and is giving him opportunities daily to witness for Him. We visit and correspond with him regularly, and he has really blessed our lives!

I just wanted to say that I almost let the devil cheat me out of a great blessing, plus maybe losing a man's soul. I said that to say this: if God tells you to do something, do it! He will go with you and prepare the way for you, and He will be working on the other end. Be obedient to God, and you will not be able to receive the blessings He will shower you with.

Edith Cooper
Route 1, Box 500
Baxter, TN 38544

'Pin pricks of satire'

Dear editor:

I certainly appreciate your satire on evangelists (Cicero's comment, Jan. 19). I know many Godly evangelists, and the ones I know were greatly amused with the article.

Satire is especially good for those of us who are leaders in the Lord's work. Sometimes we have a tendency to "think more highly of ourselves than we ought," to become puffed up with a sense of our own importance, and the gentle pin prick of satire helps us see things in the right perspective.

Thank you for Cicero. You help me to hang loose and to see that I'm not to take myself seriously—but the Lord and His work are to be taken seriously.

Bill Delaney
1201 South Seminole Dr.
Chattanooga, TN 37412

Publishing all letters

Dear editor:

I want to commend you on publishing Ray Maddox's letter (Feb. 9). You reflect the best of our faith in dealing so kindly with the personal attack on you. The letter is an excellent example of the condescen-

sion and arrogant self-righteousness that a relative few of our faith seem to have.

The particular passages that I find tragically lacking in Christian love, understanding, and compassion are the first and last paragraphs. Let me say that I think, and I am sure the overwhelming majority of your regular readers think, that you are quite positive and faithful in attempting to give proper direction to our entire convention effort as we labor together under the leadership of our Lord.

I think you might have prefaced your excellent satire with some note indicating that you felt our denomination is, on the whole, free from such misguided evangelists as those you deal with. On the other hand, I think you have hit the nail on the head—the cause of Christ has probably suffered more from religious charlatans of the kind you describe so effectively than it has from all the atheists and agnostics in the country at any particular time.

It would seem that your sketch hit a nerve in your correspondent; otherwise the reaction would not have been so violent.

W. W. Bass
108 West Ellis St.
Jefferson City, TN 37760

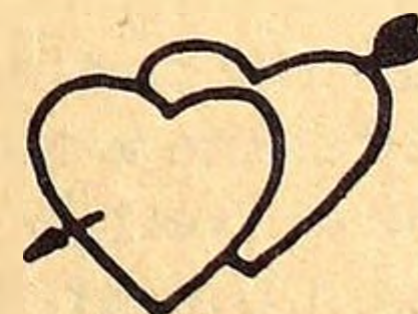
No editor has all the truth nor is above making improper judgments or interpretations. For this reason, I am a strong believer in an open "letter to the editor" page. Every such letter on a controversial issue that meets our policy (printed at the top of this page will be published. (editor)

Clarksville artist joins BSSB

Mrs. Susan Maywald of Clarksville has been employed as an artist designer in the Christian development division of the Sunday School Board in Nashville. She is the daughter of Pastor and Mrs. John David Laida of Clarksville's First Church.

PEW CUSHIONS

Master
Crafted



With
Loving Care

Call or write for specifications and price list

NASHVILLE UPHOLSTERING CO.

2301 12th Ave. So., Nashville, Tn. 37204
Phone 615-269-9628

also—pews upholstered or reupholstered

Bus transportation, parking announced for Atlanta SBC

ATLANTA—Extensive plans to simplify transportation problems have been made for the annual meeting of the Southern Baptist Convention, which meets in Atlanta, June 13-15.

About 20,000 persons will attend sessions in Atlanta's World Congress Center in the heart of downtown Atlanta.

Three special bus routes are already planned to bring convention-goers from downtown hotels to the World Congress Center. Twenty hotels within a 10-minute ride of the congress center have already committed 4,392 rooms to SBC messengers.

In addition, Atlanta Civic Center parking lots will accommodate 2,300 automobiles about one mile from the SBC hall. Shuttle buses will carry messengers from this lot to

the center. Cost for parking there is \$1 per day for SBC messengers.

Also, a fourth bus route is being considered serving the Northeast Expressway. Five major motels on this expressway have committed 1,200 rooms for SBC use.

Atlanta arrangements leaders have said that transportation plans are still flexible, depending upon how messengers make hotel reservations.

Metropolitan Atlanta Rapid Transit Authority buses will be used. Fare will not exceed 35 cents.

William L. Self, chairman of local arrangements, said that some 5,000 public parking spaces are near the World Congress Center. But most of these spaces are filled

during the day by working Atlantans.

"We are urging SBC messengers to plan to use a shuttle bus from their hotel, or park in the Civic Center lot and ride a MARTA bus to the World Congress Center," Self said. Messengers need to make reservations soon. Downtown hotels are already filling up. Address of the SBC Housing Bureau is 233 Peachtree St., NE, Atlanta 30303," he said.

Hotel and motel reservations should be made on application forms printed in **The Baptist Program** or available from the Baptist state convention offices.

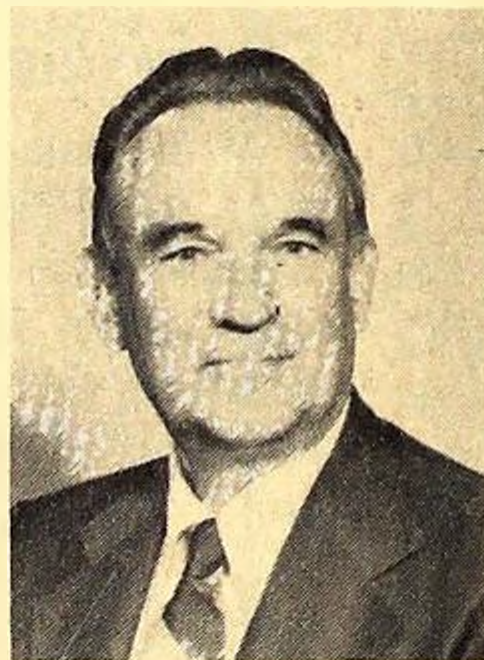
Tom Duvall, chairman of the SBC transportation committee, is deputy director of MARTA and a deacon in Rainbow Park Baptist Church, Decatur, Ga. (BP)



Be our guest for three days of in-depth Bible study and warm inspirational singing.



Dr. S. M.
Lockridge



Dr. Clyde
Francisco



Dr. Cal Guy



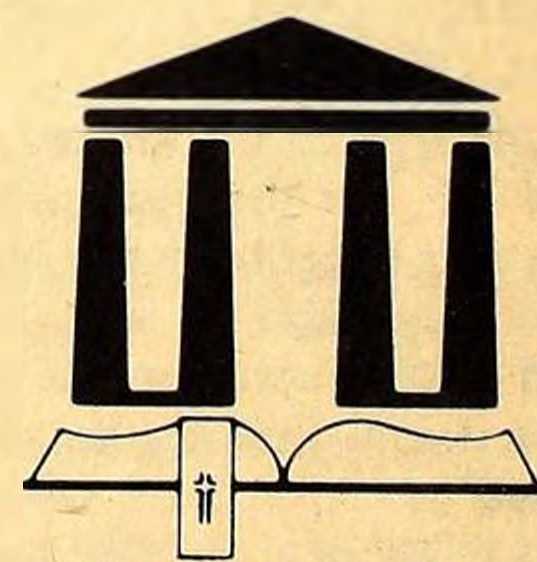
Dr. Sidney
Buckley

"The People of God in Today's World"

With the coming of Spring we are traditionally reminded of how beautiful the world is after the winter snows have melted. A part of Spring in West Tennessee that is fast becoming a welcomed tradition is Union University's Annual Spring Bible Conference.

This year join us for our seventh conference as we set aside three days to learn new truths from God's Word. We are praying for the best conference ever as we continue to seek Christ's guidance for our lives.

"The People of God in Today's World" will be our theme. We hope to see you Monday morning, March 6 at 10:00 a.m. in G. M. Savage Memorial Chapel.



March 6-8

Union University
Jackson, Tennessee

TREASURER'S REPORT FOR FIRST QUARTER

JANUARY 31, 1978

	Nov. 1, 1976 Jan. 31, 1977	Nov. 1, 1977 Jan. 31, 1978	Gain
Cooperative Program	\$2,422,892.31	\$2,748,047.07	\$325,754.76
Designated and Reported	1,850,720.69	2,013,198.77	162,478.08

Total Gifts \$4,273,613.00 \$4,761,845.84 \$488,232.84

The above represents a 13.44 percent increase in Cooperative Program Gifts and 8.78 percent increase in Designated and Reported Gifts.

Lottie Moon Offering was \$1,574,758.30, which is \$153,108.28 more than at this time last year.

Ralph Norton, executive secretary-treasurer

CHURCH	COOPERATIVE PROGRAM	DESIGNATED	CHURCH	COOPERATIVE PROGRAM	DESIGNATED
ALPHA			FAIRVIEW	.00	93.69
CENTERVILLE, FIRST	570.00	699.60	HOPCINELL	.00	76.00
CROSS ROADS	210.23	.00	KELLISTOWN	334.48	334.48
ECCEVOOC	63.00	150.00	KINGSTON, FIRST	6,597.41	4,173.51
FAIRFIELD	197.28	220.50	LAKEVIEW	423.23	.00
GARRETT	6.00	.00	LEE VILLAGE	394.82	35.55
HIGHLAND	235.20	.00	LIBERTY	2,593.71	1,944.00
HOMENWALD, FIRST	984.13	245.25	MIDDLE CREEK	2,635.90	.00
LINDEN, FIRST	213.60	100.61	MOSSY GROVE	92.00	90.00
LOBELVILLE, FIRST	19.02	.00	OAKDALE, FIRST	460.00	189.00
MAPLE VALLEY	72.66	.00	ORCHARD VIEW	.00	75.00
PINE GROVE	36.91	60.00	PETROS	1,073.73	1,014.02
PINEY	22.49	.00	PILOT MOUNTAIN	.00	.00
TOMS CREEK	85.60	.00	PINE ORCHARD	660.08	420.10
WRIGHT	176.15	114.47	PINE RIDGE	269.37	100.00
ASSOCIATION	.00	.00	PINEY	830.01	536.60
TOTAL	2,692.29	1,590.43	PINEY GROVE	90.00	63.18
BEECH RIVER			PLEASANT GROVE	972.00	726.34
BATH SPRINGS	163.57	200.00	POND GROVE	597.95	223.55
BEACON, FIRST	25.00	15.00	RIGGS CHAPEL	220.00	89.20
BEAR CREEK	60.00	151.37	RIVERSIDE	647.30	298.90
BIBLE HILL	.00	100.00	ROCKWOOD, FIRST	11,131.27	4,546.53
BOLENS CHAPEL	.00	.00	ROCKWOOD, SECOND	.00	33.00
BUNCHES CHAPEL	.00	.00	SHILOM	4,329.30	1,566.10
CALVARY	1,387.77	311.47	SOUTH HARRISMAN	4,519.33	2,542.40
CHAPEL HILL	127.55	125.00	SUNRIGHT, FIRST	694.68	177.35
CORINTH	.00	50.00	TOWN STREET	8,615.67	2,135.25
CUB CREEK HALL	.00	.00	UNION	231.00	207.00
DARCEY	.00	182.00	UNION CHAPEL	154.51	18.00
DECATURVILLE, FIRST	150.00	300.00	WALNUT HILL	435.84	10.00
FLATWOODS	.00	75.00	WARTBURG, FIRST	400.00	60.00
HINKLE	.00	.00	WHITES CREEK	426.57	273.00
HOPEWELL	.00	.00	ASSOCIATION	.00	.00
MURON	25.00	.00	TOTAL	57,304.94	26,906.27
JACKS CREEK	.00	.00	BIG HATCHIE		
JUDSON	100.00	26.40	ASHPORT	139.50	80.75
LEXINGTON, FIRST	1,200.00	3,825.69	BEAVER	164.00	73.00
LONG CHESTNUT	.00	.00	BRIGHTON	7,343.62	2,979.30
LURAY	.00	.00	CHARLESTON	1,148.00	2,253.72
MOUNT ARARAT	197.10	320.25	CHARLESTON, FIRST	5,000.00	4,962.08
MOUNT GILEAD	170.00	337.55	DURHAMVILLE	15.00	60.00
MOUNT ZION	.00	.00	EASTLAND	.00	33.00
NEW BEECH GROVE	.00	.00	ELI	47.68	21.72
NEW CHAPEL	.00	.00	FAITH	398.00	741.62
NEW HOPE	60.00	150.00	FELLOWSHIP	659.57	737.07
NEW PROSPECT	19.76	29.64	FULTON	58.52	104.91
PARSONS, FIRST	1,120.00	1,106.75	GARLAND	112.50	607.77
PERRYVILLE, FIRST	.00	.00	GOLD DUST	.00	.00
PINE GROVE	217.36	.00	GRACE	703.70	1,857.00
PINEY CREEK	.00	.00	MENNING	135.74	747.50
RIDGE GROVE	.00	.00	KEELING	.00	.00
ROCK HILL	411.75	99.75	LIBERTY	1,728.80	1,862.60
SALEM	.00	16.00	MASON, FIRST	.00	.00
SALTILLO, FIRST	82.72	.00	MOUNT LEBANON	260.80	64.08
SAND RIDGE	575.78	369.00	MUNFORD	683.97	364.76
SARVIS	175.00	.00	OAK GROVE	2,040.00	648.46
SARVIS RIDGE	.00	.00	OLIVE BRANCH	185.05	163.13
SCOTTS HILL, FIRST	165.90	56.95	PLEASANT GROVE	878.33	381.64
SOUTHSHORE	.00	.00	RIALTO	.00	.00
TOMLIN CHAPEL	.00	.00	RIPLEY, FIRST	5,092.63	2,819.01
UNION	120.50	451.75	RIDLEY, FIRST INDIAN	.00	.00
UNION GROVE	150.00	.00	SALEM	.00	166.00
WILDERVILLE	564.42	206.00	SHYRNA	1,590.00	234.74
ASSOCIATION	.00	.00	TRINITY	580.79	.00
TOTAL	7,369.26	8,624.07	WALNUT GROVE	262.86	149.32
BEULAH			WESTERN VALLEY	160.16	.00
ALAMO	85.85	101.58	WOODLAWN	50.00	707.00
ALDRIDGE	61.93	.00	ASSOCIATION	.00	25.00
BETHEL	65.00	41.00	TOTAL	29,449.57	23,177.30
BEULAH	.00	.00	BLEDSE		
BROADWAY	75.00	960.00	ANTIOCH	32.78	.00
CALVARY	1,375.41	133.58	BLEDSE CREEK	174.80	.00
COTTONWOOD	120.00	.00	CHEERY MOUND	30.00	222.28
COTTONWOOD GROVE	330.43	547.50	CHESTNUT GROVE	67.90	.00
CYPRESS CREEK	25.00	50.00	CORUM HILL	46.00	.00
FAIRVIEW	117.50	75.00	COTTONWOOD	375.00	500.00
HORNBEAK	130.00	162.00	DIXON CREEK	.00	300.00
JOHNSONS GROVE	120.58	110.00	FOUNTAIN HEAD	.00	.00
LAKEVIEW	.00	.00	FRIENDSHIP	.00	.00
MACDONIA	281.90	619.60	GALLATIN, FIRST	14,251.60	9,211.50
MARTIN, FIRST	3,450.00	4,649.00	GRACE	562.60	475.17
MC CONNELL	257.29	339.71	HARTSVILLE, FIRST	972.66	526.47
MODRING	30.00	50.00	HILLSDALE	.00	.00
MOUNT MORIAM	.00	.00	IMMANUEL	408.00	119.00
MOUNT OLIVE	629.13	76.94	INDIAN HILLS	385.00	.00
MOUNT PELIA	1,034.40	736.25	LA FAYETTE, FIRST	619.42	744.15
NEW CONCORD	31.00	51.00	MITCHELLVILLE	228.86	86.25
NEW HOME	259.00	700.10	NEW HOPE	557.00	2,000.00
NEW SALEM	788.26	307.15	PAGE HEIGHTS	312.22	81.50
ORION, FIRST	1,815.84	650.00	PLEASANT VALLEY	100.00	97.48
PHILLIPPY	30.00	.00	PORTLAND, FIRST	3,264.00	2,026.90
PLEASANT HILL #1	435.00	380.00	RED BOILING SPGS, FIRST	.00	.00
PLEASANT HILL #2	359.41	400.00	SOUTHSHORE	.00	2,811.20
REELFOOT	80.00	477.85	STATION CAMP	151.45	100.75
RIDGELY, FIRST	4,815.98	9,524.60	TWIN HILLS	.00	.00
SAMBURG	262.75	.00	WESTSHORELAND, FIRST	184.35	281.00
SOUTH FULTON, FIRST	2,373.63	295.99	ASSOCIATION	.00	.00
TIPTONVILLE, FIRST	635.56	786.02	TOTAL	22,722.71	19,625.71
TROY, FIRST	1,603.08	1,430.05	BRADLEY		
UNION CITY, FIRST	7,595.92	1,455.09	ANTIOCH	407.27	126.63
UNION CITY, SECOND	2,710.09	1,598.07	BELLEFONTE	673.76	860.00
WILLINGHAM MEMORIAL	294.65	350.00	BETHEL	184.86	.00
WOODLAND HILLS	1,587.46	1,159.64	BIG SPRING	5,978.67	2,264.03
WYNNBURG	.00	.00	BLUE SPRINGS	992.99	959.00
ASSOCIATION	.00	.00	BRITTSVILLE	187.00	.00
TOTAL	33,887.07	28,219.60	CALVARY	750.00	376.62
BIG EMORY			CANDIES CREEK	481.60	.00
BEECH PARK	1,051.03	105.11	CENTER POINT	.00	100.00
BETHEL	60.00	.00	CHARITY	.00	.00
BIG EMORY	999.28	212.95	CHARLESTON, FIRST	800.00	1,811.78
CALVARY	45.00	324.80	CHESTNUT	.00	.00
CANEY FORD	325.00	715.00	CLEVELAND, FIRST	8,999.97	12,287.49
CARDIFF	.00	.00	CLINGMAN RIDGE	473.59	606.87
CEGAR GROVE	.00	.00	CLOVERLEAF	159.84	.00
CENTRAL	987.01	845.62	COHULLA	.00	.00
CHILDS MEMORIAL	817.68	200.00	CORINTH	75.00	75.00
CLAY GAP	194.83	225.00	COUNCIL	.00	342.63
CLYMERSVILLE	620.70	132.17	EAST CLEVELAND	.00	300.00
CCAL HILL	161.35	30.00	EAST VIEW	.00	.00
CRAB ORCHARD	639.00	883.94	ELKMONT	.00	100.73
CRYSTAL	96.13	227.00	EMMANUEL	.00	.00
DEER LODGE, FIRST	386.57	124.00	FAIRVIEW	102.41	.00
DYLLIS	1,161.07	636.15	FAIRVIEW	19.12	.00
EUREKA	.00	.00	FOUR POINT	95.46	.00
			GALILEE	477.14	52.00
			GEORGETOWN	195.62	500.00
			GOODWILL	.00	.00

CHURCH	COOPERATIVE PROGRAM	DESIGNATED	CHURCH	COOPERATIVE PROGRAM	DESIGNATED
GUM SPRING	.00	135.50	MARYVILLE, SECOND	.00	2,719.41
HOPEVELL	2,108.43	1,851.31	MEADOWBROOK	136.23	158.38
LEBANON	68.06	151.05	MIDWAY	.00	145.00
MACEDONIA	370.00	573.40	MILLERS COVE	586.13	308.00
MAPLE STREET	454.26	345.92	MONTA VISTA	11,030.12	4,516.13
MICHIGAN AVENUE	1,283.08	.00	MOUNT CARMEL	326.45	289.00
MOUNT CARMEL	862.16	1,550.61	MOUNT LEBANON	7,125.26	3,867.91
NEW FRIENDSHIP	779.08	610.00	MOUNT ZION	.00	450.00
NEW HOPE MISSIONARY	.00	.00	NILES FERRY	3,360.05	726.22
NORTH CLEVELAND	2,944.54	638.57	OAK STREET	872.13	720.00
OAK GROVE	260.34	.00	OAK VIEW	541.77	1,250.00
PARKWAY	1,032.38	270.99	OLD CHILMOWEE	66.58	.00
PHILIPPY	547.14	.00	OLD PINEY GROVE	708.41	.00
RIDGEVIEW	.00	.00	PILGRIM	346.00	815.00
SAMPLES MEMORIAL	.00	.00	PINEY GROVE	2,177.80	1,116.00
STUART PARK	779.30	411.00	PINEY LEVEL	421.00	253.00
TASSO	.00	.00	PLEASANT GROVE	4,973.41	3,184.84
THOMPSON SPRINGS	236.40	326.00	PROSPECT	899.66	280.06
UNION	120.00	823.74	PROVIDENCE	746.95	1,333.59
VALLEY VIEW	1,130.97	639.76	ROCKFORD	860.26	.00
WASHINGTON AVENUE	.00	.00	ROCKY BRANCH	556.02	550.00
WATERVILLE	306.55	3,260.00	SALEM	399.46	868.11
WEST CLEVELAND	697.87	340.00	SEYMOUR, FIRST	4,814.86	1,576.28
WESTWOOD	2,208.33	3,244.31	SIX MILE	382.21	1,276.00
WHITE OAK	.00	.00	SMOKY VIEW	138.19	593.50
ASSOCIATION	.00	.00	SPRINGVIEW	520.16	168.00
TOTAL	37,175.19	36,123.25	STOCK CREEK	4,761.31	1,484.45
CAMPBELL COUNTY			TRINITY	.00	.00
ABBOTTS	.00	.00	UNION GROVE	.00	334.64
ALDER SPRINGS	41.75	.00	UNITY	823.59	1,399.36
CALVARY	94.24	111.50	VILLAGE MISSIONARY	483.92	.00
CARYVILLE, FIRST	1,402.00	49.00	WEST MARYVILLE	329.15	329.13
CEGAR CREEK	.00	.00	WILWOOD	815.09	872.36
CEGAR HILL	173.27	733.19	ZION CHAPEL	490.17	36.00
CENTRAL	.00	.00	ASSOCIATION	.00	694.19
CLAIRFIELD	87.30	50.00	TOTAL	132,714.36	85,516.33
COOLIDGE, FIRST	137.38	100.00	CLINTON		
DEMORY	30.00	58.50	ANDERSONVILLE, FIRST	1,566.47	306.50
EAGAN	30.92	20.00	BATLEY	.00	500.00
EAST JACKSONBO	.00	135.42	BEECH GROVE	392.51	785.00
EAST LA FOLLETTE	104.00	64.62	BETHEL	1,800.00	169.65
ELK VALLEY, FIRST	228.94	25.00	BLACK OAK	2,504.00	97.46
ELM GROVE	.00	.00	BLOWING SPRINGS	271.50	110.00
GLADE SPRINGS	131.25	90.00	BRICEVILLE, FIRST	.00	.00
HIGH STREET	.00	.00	CALVARY, WEISKELL	564.81	322.73
HILLCREST	122.36	.00	CALVARY, OAK RIDGE	3,913.85	2,628.50
INDIAN CREEK	.00	223.00	CARROLL HOLLOW	.00	.00
INDIANA AVENUE	475.29	.00	CENTRAL	9,232.35	1,215.35
JACKSONBO, FIRST	1,718.03	1,202.25	CLEAR BRANCH	1,952.00	700.00
JELICO, FIRST	1,332.72	1,332.60	CLINCH RIVER	568.00	302.00
LA FOLLETTE, FIRST	6,952.00	2,661.88	CLINTON, FIRST	13,334.00	5,626.50
LAKE VIEW	32.37	97.12	CLINTON, SECOND	4,515.00	1,590.72
LITTLE COVE CREEK	.00	.00	OUTCH VALLEY, FIRST	22.50	50.00
MACEDONIA	.00	.00	EGGEMOOR	697.06	500.00
MIDWAY	30.00	45.00	FAIRVIEW	1,136.05	26.00
MORLEY	.00	.00	FARMERS GROVE	150.44	767.90
NEW LIBERTY	.00	.00	FRATERSVILLE	.00	100.00
NEWCOMB	.00	60.00	FREE FOMUNION	.00	.00
OAK GROVE	.00	193.00	FROST BOTTOM	142.80	119.00
PIONEER	.00	.00	GRANWOOD	6,361.00	2,978.64
PRUDEN, FIRST	.00	.00	GRACE	.00	.00
RIDGEVIEW	7.50	.00	GRAVE HILL	.00	.00
ROYAL BLUE	.00	.00	GRAVES GAP	74.44	.00
SPEEDWELL ACADEMY	.00	42.66	GUINOING STAR	.00	100.00
VICTORY	.00	.00	HILLVALE	.00	.00
WEST LA FOLLETTE	376.93	.00	INDIAN BLUFF	7	.00
WHITE OAK	.00	.00	ISLAND BLUFF	737.94	.00
WHITMAN	128.00	100.00	ISLAND FORD	64.38	.00
ASSOCIATION	.00	.00	ISLAND HOME	.00	.00
TOTAL	13,527.25	7,401.74	JARNHIGANS CHAPEL	.00	.00
CARROLL BENTON			LAKE CITY, FIRST	1,709.83	1,012.73
ATWOOD, FIRST	781.40	487.00	LAKEVIEW	30.00	.00
BETHEL	77.65	.00	LAUREL BRANCH	151.85	.00
BRUCETON, FIRST	1,750.00	641.92	LAUREL GROVE	60.00	35.00
CAMDEN, FIRST	7,382.65	1,064.00	LONGFIELD	337.13	123.47
CHALK LEVEL	.00	200.00	MAIN STREET	1,026.92	1,780.00
CONCORD	.00	.00	MINERAL SPRINGS	57.57	.00
EAGLE CREEK	67.00	141.00	MOORES CHAPEL	.00	.00
EAST SIDE	480.42	176.50	MORAN	107.00	121.23
ENON	90.00	200.00	MCUNT PLEASANT	726.31	216.50
EVA	201.00	443.00	MOUNTAIN VIEW	.00	.00
FAIRVIEW	.00	130.00	NEW HAVEN	.00	.00
GRACE	30.00	.00	NEW HOME	.00	.00
HOLLADAY UNITY	50.00	175.00	NEW MOUNTAIN VIEW	295.87	.00
HOPEVELL	.00	130.00	NEW PILOT	.00	.00
HOVSE	779.80	562.61	NEW SALEM	1,168.56	774.23
HUNTINGDON, FIRST	3,150.65	5,116.08	NORRIS, FIRST	263.00	120.00
LIBERTY HILL	.00	.00	NORTH CLINTON	.00	.00
MC KENZIE, FIRST	3,766.00	3,216.11	OAK RIDGE, FIRST	4,640.00	3,401.73
MC LEMORESVILLE	321.95	150.00	OLIVER SPRINGS, FIRST	2,633.89	744.46
MISSIONARY GROVE	738.93	282.00	PINE HILL	.00	552.44
MOUNT NEBO	204.00	112.00	PLEASANT HILL	1,008.99	1,010.00
NATCHEZ TRACE	245.32	97.60	PLEASANT VIEW	232.29	458.11
NEW HOPE	221.25	288.00	POPLAR CREEK	614.88	404.11
PROSPECT	1,240.00	1,093.50	RED HILL	.00	181.00
REPUBLICAN GROVE	.00	.00	ROBERTSVILLE	7,586.49	916.00
TREZEVANT, FIRST	1,158.70	250.00	ROYCE	943.78	646.11
UNION ACADEMY	399.36	280.00	SOUTH CLINTON	1,971.85	1,804.33
ASSOCIATION	.00	.00	SPRINGHILL	.00	27.22
TOTAL	23,136.08	15,267.21	TUPPERTOWN	20.00	.00
CENTRAL			UNION VALLEY	.00	.00
BARREN FORK	.00	34.00	VALLEY VIEW	122.00	222.00
BETHEL HILL	38.00	116.58	WILLOW BROOK	.00	221.90
BROWNS CHAPEL	.00	6.00	WOLFE VALLEY	264.14	.00
CAMPAIGN, FIRST	162.00	402.90	WOODLAND PARK	836.00	318.00
FALL CITY	52.20	38.36	ZION	3,101.25	1,085.88
FOREST PARK	133.36	110.00	ASSOCIATION	.00	.00
GATH	621.55	344.92	TOTAL	78,967.81	34,411.73
HUBBARD COVE	.00	.00	CONCORD		
MADISON STREET	183.37	261.14	BARFIELD	383.67	310.50
MC MINNVILLE, FIRST	2,914.00	1,750.48	BELLE AIRE	866.65	871.33
MORRISON, FIRST	635.21	952.48	BRADLEYS CREEK	135.40	36.00
MOUNT ELIM	135.54	121.00	CHRISTIANA, FIRST	150.00	230.00
NORTHSIDE	1,051.54	433.14	EAGLEVILLE	33.00	72.00
PROVIDENCE	393.47	195.00	FELLOWSHIP	517.82	214.00
SHELLSFORD	1,963.17	770.04	FLORENCE	316.20	103.20
VELCHLAND	129.87	.00	GILFS CREEK	261.74	141.80
WESTSIDE	230.26	336.19	GRACE	300.00	.00
ASSOCIATION	.00	.00	GREEN HILL	168.60	20.20
TOTAL	8,643.54	5,872.21	HILLVIEW	100.00	30.00
CHILMOWEE			HOLLY GROVE	173.83	200.00
ALCOA WAY	735.03	853.00	IMMANUEL	624.00	386.00
ALCOA, FIRST	6,136.73	.00	LASCASSAS	1,009.75	.00
ALLEGHENY	30.94	.00	LAVERGNE, FIRST	517.24	587.11
ARMONA	2,544.93	1,652.25	MANEY AVENUE	86.87	52.00
BEECH GROVE	1,636.40	584.27	MIDLAND	110.64	.00
BETHEL	536.50	536.00	MILTON	272.00	226.00
BIRCHFIELD	.00	25.00	MIRACLE	.00	1,211.00
BROADWAY	8,284.00	2,558.91	MOUNT CARMEL	.00	.00
CADES COVE MEMORIAL	1,682.75	1,084.05	MOUNT HERMON	868.00	45.00
CAIDERMWOOD	90.00	148.80	MOUNT PLEASANT	135.00	122.30
CALVARY	1,094.34	140.00	MOUNT VIEW	1,259.00	467.25
CARSON ISLAND	151.18	.00	MURFREESBORO, FIRST	6,746.66	8,320.61
CAYLORS CHAPEL	.00	.00	MURFREESBORO, THIRD	6,391.54	1,561.70
CEGAR GROVE	2,233.33	2,328.48	NEW HOPE	107.30	174.00
CENTENARY	220.15	274.00	NOLANSVILLE	48.00	180.65
CENTRAL ALCOA	381.96	2,198.74	PATTERSON	35.00	124.90
CENTRAL POINT	677.01	279.71	POWELLS CHAPEL	1,340.42	419.50
COLD SPRINGS	880.77	584.71	RUCKER	.00	.00
DOTSON MEMORIAL	2,736.36	6,562.08	SMYRNA, FIRST	2,636.00	1,926.00
EAST ALCOA	856.95	779.00	SOUTHEAST	1,785.31	2,312.50
EAST MARYVILLE	7,259.00	2,959.43	STONES RIVER	557.49	10.00
EAST WALLAND	38.99	10.00	TAYLORS CHAPEL	.00	.00
ELLEJOY	314.66	883.03	WARDS GROVE	536.92	96.30
EVERETT HILLS	5,384.90	4,607.14	WAYSIDE	.00	.00
FOREST HILL	491.67	.00	WESTGATE	138.00	111.68
FOUR MILE	865.00	1,135.00	WOODBURY ROAD	940.00	380.25
FRIENDLY HILL	159.07	50.00	ASSOCIATION	.00	.00
FRIENDSHIP	.00	176.44	TOTAL	29,552.11	21,150.00
FRIENDSVILLE, FIRST	2,451.00	1,462.50	COPPER BASIN		
GRANDVIEW	2,663.05	1,110.36	BETHLEHEM	.00	.00
GREENBACK MEMORIAL	1,080.71	1,393.31	COLETON	269.58	225.00
HAPPY VALLEY	140.96	281.21	QUICKTOWN BIBLE	.00	110.00
HILLVIEW	333.93	664.24	GRASSY CREEK	.00	8.00
HOPEVELL	201.33	.00	ISABELLA	155.37	107.40
IMMANUEL	360.00	126.21	MAPLE GROVE	.00	25.00
KAGLEYS CHAPEL	363.81	303.62	MINE CITY	2,354.62	858.82
KEEBLES CHAPEL	140.34	.00	MOUNT CARMEL	.00	60.00
KINZELL SPRINGS	.00	185.00	MOUNT HERMON	.00	.00
LAKE VIEW	.00	.00	MOUNT ZION	272.18	259.00
LAUREL BANK	695.62	606.78	NEW ZION	75.00	150.00
LIBERTY	227.26	100.00	PLEASANT HILL	.00	84.00
LOUISVILLE	46.90	70.35	TURTLETOWN	300.00	680.00
MACEDONIA	.00	.00	ZION HILL	571.70	702.37
MADISON AVENUE	1,200.00	3,019.86	ASSOCIATION	.00	.00
MAPLE GROVE	92.87	375.72	TOTAL	3,908.45	3,269.59
MARBLE HILL	78.99	.00	CROCKETT COUNTY		
MARYVILLE, FIRST	27,525.01	12,996.59	ALAMO, FIRST	3,375.00	2,833.00

CHURCH	COOPERATIVE PROGRAM	DESIGNATED	CHURCH	COOPERATIVE PROGRAM	DESIGNATED	CHURCH	COOPERATIVE PROGRAM	DESIGNATED	CHURCH	COOPERATIVE PROGRAM	DESIGNATED
BARKERS CHAPEL	103.64	34.55	CROSS ROADS	548.83	75.00	MOUNT PLEASANT	740.13	1,200.00	SHEPHERD	.00	.00
BELLS, FIRST	2,041.90	3,446.15	DECHERO, FIRST	402.20	.00	NEW BETHLEHEM	1,364.37	613.23	SIGNAL HILL	390.39	378.00
CAIRO	40.00	100.00	ESTILL SPRINGS	1,403.00	377.00	NEW HOPE	60.00	.00	SIGNAL MOUNTAIN	5,923.17	99.99
CROSS ROADS	648.14	1,300.00	GRACE	785.45	11.45	NORTHERNS CHAPEL	.00	173.00	SILVERDALE	4,161.20	2,076.03
FRIENDSHIP	767.00	418.90	HIGHLAND	997.14	626.70	NORTHSIDE	755.71	1,758.24	SOUTH SEMINOLE	4,497.29	4,492.37
GADSDEN	483.50	599.65	HILLSBORO	143.70	100.00	OAK GROVE	182.34	173.10	SOUTH SODDY	.00	.00
JOHNSON GROVE	.00	50.00	HUNTLAND	523.92	41.45	OAKWOOD	509.46	327.50	SPRING CREEK ROAD	7,375.76	4,666.19
MAURY CITY, FIRST	950.62	4,203.00	KEITH SPRINGS	78.84	112.00	OLD BETHLEHEM	124.50	166.62	STANDIFFER GAP	.00	.00
MIDWAY	.00	25.00	LIBERTY	368.08	.00	POPLAR GROVE	867.86	669.88	STANLEY HEIGHTS	.00	.00
PROVIDENCE	.00	73.69	LINCOLN HEIGHTS	27.50	.00	POPLAR SPRINGS	1,045.00	261.25	STUART HEIGHTS	690.16	683.40
SOUTH FORK	109.67	144.00	MANCHESTER, FIRST	3,813.59	2,660.87	RUTHERFORD, FIRST	1,247.72	1,000.00	TEMPLE	.00	.00
THREE WAY	.00	.00	MAXWELL	272.31	334.70	SALEM	850.73	440.31	TIMESVILLE AVENUE	.00	.00
WALNUT HILL	317.00	461.00	MIDWAY	242.89	45.71	SOUTHSIDE	232.62	40.35	TRENTON	376.19	.00
ASSOCIATION	.00	.00	MONTEAGUE, FIRST	48.94	50.00	SPRINGHILL	326.60	287.30	TYNER	522.00	20.00
TOTAL	8,836.27	13,689.79	OAKLAWN	324.99	305.00	TRENTON, FIRST	4,679.93	4,727.59	UNION FORK	961.26	371.00
CUMBERLAND			PAYNES	.00	.00	WALNUT GROVE	398.24	517.11	WHITE OAK	13,647.90	6,580.25
ALVA	.00	.00	PRAIRIE PLAINS	53.76	171.50	WEST SIDE	100.00	1,111.00	WHITESIDE	.00	87.72
BLOOMING GROVE	813.00	205.00	RYLA LAKE	244.13	50.00	WHITE HALL	1,266.00	.00	WOODLAND HEIGHTS	397.24	104.00
CANAAN, FIRST	166.00	100.00	RUTLEDGE FALLS	764.20	386.25	ASSOCIATION	.00	.00	WOODLAND PARK	2,398.95	303.00
CHARLOTTE, FIRST	407.45	46.20	SOUTHSIDE	116.13	416.60	TOTAL	47,330.51	39,232.70	ASSOCIATION	.00	.00
CLARKSVILLE, FIRST	5,160.00	5,291.86	SPRING CREEK	381.47	115.19	GILES COUNTY			HARDEN COUNTY	234,309.75	165,916.24
CROSS CREEK	148.69	.00	SUMMITVILLE	192.45	182.46						
CROSSLAND AVENUE	305.43	.00	TRACY CITY, FIRST	1,290.00	.00	BRADSHAW	.00	50.00	BETHLEHEM	3.00	132.00
CUMBERLAND CITY, FIRST	280.00	.00	TRINITY	1,644.62	648.00	ELKTON	469.68	101.00	BOLIVAR, FIRST	4,125.00	4,446.36
CUMBERLAND DRIVE	1,438.67	254.10	TULLAHOMA, FIRST	13,751.67	1,972.79	HANNAH	.00	.00	BRIGHTS CHAPEL	.00	.00
DOTSONVILLE	126.00	.00	WESTWOOD	114.00	100.00	HIGHLAND	559.95	192.70	CLOVERPORT	109.59	93.00
ERIM	600.00	1,534.00	WINCHESTER, FIRST	2,053.57	2,592.23	LIBERTY HILL	.00	136.00	DIXIE HILLS	423.30	235.88
EXCELL	497.49	270.13	ASSOCIATION	.00	.00	LYNNVILLE, FIRST	100.56	.00	EBENEZER	170.00	340.00
GRACEY AVENUE	689.35	335.24	TOTAL	32,863.97	12,616.49	MINNOW BRANCH	.00	.00	ENON	.00	.00
GUM SPRINGS	412.09	.00	OYER			MINOR HILL	.00	180.50	ESSARY SPRINGS	.00	.00
HARMONY	.00	.00	BEECH GROVE	.00	120.00	NEW HOPE	180.00	165.00	GRAND JUNCTION, FIRST	.00	480.00
HILLCREST	1,167.06	341.00	BUGOTA	.00	.00	NEW ZION	62.69	.00	HATCHIE	254.72	72.73
HILLOALE	1,250.00	1,185.50	CALVARY CHAPEL	.00	120.00	OAK GROVE	18.20	60.00	HEBROM	52.50	335.44
IMMANUEL	67.91	.00	CALVARY HILL	.00	180.00	PROSPECT	.00	.00	MICKORY VALLEY	250.00	500.00
KENWOOD	464.83	176.52	CURVE	697.80	179.00	PULASKI, FIRST	3,086.26	795.50	MORNSBY	1,163.83	446.00
KIRKWOOD	601.89	211.62	DYERSBURG, FIRST	1,750.03	1,693.32	ROCK SPRINGS	187.00	100.00	MIDDLEBURG	.00	.00
LITTLE HOPE	913.98	348.00	DYERSBURG, SECOND	300.00	100.00	SCOTTS HILL	.00	.00	MIDDLETON, FIRST	910.00	525.00
LITTLE WEST FORK	998.95	720.31	ELON	.00	.00	SHORES	60.00	50.00	MIDWAY	.00	58.85
MEMORIAL	.00	.00	EMMAUS	75.00	387.19	THOMPSON CHAPEL	.00	.00	NEW BETHEL	101.11	65.06
MOUNT HERMAN	592.64	546.26	ENON	370.50	99.65	UNION HILL	.00	.00	NEW UNION	442.42	32.82
NEW CANAAN	.00	.00	FAIRVIEW	75.00	26.13	UNION VALLEY	.00	.00	PARRANS CHAPEL	1,381.06	124.10
NEW PROVIDENCE	1,744.13	.00	FINLEY	50.00	472.04	WELCOME VALLEY	.00	.00	PINEY GROVE	356.54	.00
NORTHSIDE	48.83	.00	FORT HUCSON	.00	80.00	WHEELERTON	.00	.00	PLEASANT GROVE	.00	50.00
PARKVIEW	1,014.00	350.00	FOWLES	1,872.23	361.75	ASSOCIATION	.00	.00	POCAHONTAS, FIRST	.00	550.78
PLEASANT VIEW	1,097.22	1,836.00	GATES	397.53	81.43	TOTAL	4,724.86	1,830.76	PORTERS CREEK	.00	.00
ST. BETHLEHEM, FIRST	266.00	306.70	HALLS, FIRST	2,000.00	3,997.07	GRAINGER COUNTY			ROCKY SPRINGS	.00	.00
SLAYDEN	134.13	100.00	HALLS WESTSIDE	288.00	155.03	ADRIEL	.00	.00	SAUSBURY	514.01	906.06
SPRING CREEK	596.25	262.48	HARMONY	373.37	244.76	AVONDALE	.00	.00	SHAWNY	.00	.00
TRINITY	59.21	46.43	HAWTHORNE	815.81	536.30	BARNARDOS GROVE	302.24	337.46	SILERTON	508.26	662.97
VANLEER	165.72	.00	HILLCREST	2,380.73	1,651.68	BEAM STATION, FIRST	139.75	17.00	TOONE	779.87	441.07
WOODLAWN	478.91	140.00	LENOX	448.39	34.09	BLOCK SPRINGS	191.00	741.00	TRINITY	30.00	.00
ASSOCIATION	.00	.00	MACE DONIA	927.00	770.97	BLUE SPRINGS	523.17	.00	WALNUT GROVE	105.00	203.91
TOTAL	22,707.49	14,629.35	MARYS CHAPEL	219.87	235.00	BUFFALO	153.00	254.00	WEST MEMORIAL	155.00	300.00
CUMBERLAND GAP			MC CULLOUGH'S CHAPEL	45.00	100.00	BYERLEYS CHAPEL	.00	126.08	WHITEVILLE, FIRST	1,771.56	2,851.16
ATLANTHUS HILL	105.52	70.50	MISTON	50.00	.00	CALVARY	29.00	.00	ASSOCIATION	.00	.00
BETHEL	.00	.00	MOUNT TIRZAH	1,406.81	502.59	CENTRAL POINT	136.60	344.00	TOTAL	13,606.83	13,855.19
BIG SPRING UNION	.00	.00	MOUNT VERNON	353.88	80.00	COFFEYS CHAPEL	.00	.00	HAYWOOD		
BLAIRS CREEK	.00	151.51	NEW MITCHELL GROVE	30.00	10.00	ELM SPRINGS	.00	.00	ALLEN	1,168.00	2,448.00
BROOKS MEMORIAL	.00	.00	NEWBURN, FIRST	1,740.21	2,485.59	FAIRVIEW	.00	.00	ANTIOCH	.00	215.00
BUTCHERS GAP	.00	.00	PARRISH CHAPEL	174.00	56.64	HEAD OF RICHLAND	77.15	40.00	BROWNSVILLE	9,124.98	6,948.09
CALVARY	.00	.00	RO ELLEN	100.00	77.00	MELTON SPRINGS	453.60	500.00	CALVARY	250.00	310.00
CARRS CHAPEL	.00	373.08	SOUTHSIDE	1,959.64	1,832.87	INDIAN RIDGE	188.39	.00	HARMONY	1,686.54	1,214.24
CAVE SPRING	.00	.00	SPRINGHILL	600.00	111.70	LEA SPRINGS	420.66	165.00	HOLLY GROVE	460.43	1,261.50
CEDAR FORK	.00	123.00	TRIMBLE	2,184.20	250.00	LOCUST GROVE	164.00	185.00	POPLAR CORNER	369.06	650.25
CEDAR GROVE	.00	26.62	WEST SIDE	252.28	191.81	MITCHELL SPRINGS	157.14	53.19	SHAW'S CHAPEL	47.50	80.50
CHADWELL STATION	114.80	97.00	WILLIAMS CHAPEL	30.00	165.40	MOUNT EAGEN	65.85	.00	STANTON	262.42	266.00
CHATTIUN CHAPEL	.00	.00	WOODVILLE	276.01	37.00	MOUTH OF RICHLAND	1,243.96	1,666.50	WOODLAND	630.00	161.55
CLOUDS MEMORIAL	.00	.00	ZION HILL	116.16	135.20	NARROW VALLEY	81.45	71.00	ZION	1,409.55	117.40
CUMBERLAND GAP, FIRST	.00	.00	ASSOCIATION	.00	.00	NEW BLACKWELL	153.17	100.00	ASSOCIATION	.00	.00
DUNCAN CHAPEL	.00	.00	TOTAL	29,497.66	17,563.21	NEW CORINTH	119.16	75.97	TOTAL	15,408.56	13,672.53
EAST HOPEWELL	.00	.00	EAST TENNESSEE			NEW PROSPECT	55.80	.00	HINWASSEE		
FAIR VIEW	.00	204.29	SAYSINGER CHAPEL	.00	.00	NETON	.00	.00	CHAPMAN GROVE	.00	901.94
FORGE RIDGE	.00	50.00	BEAR CREEK	13.96	.00	OAK GROVE	.00	.00	CONCORD	.00	102.81
FRIENDSHIP	.00	.00	BETHEL	.00	.00	OAKLAND	425.00	510.00	PAINT ROCK	.00	382.88
GAP CREEK	.00	97.74	BROWNS MISSIONARY	.00	.00	POVOER SPRINGS	54.32	25.00	PEARLANC	30.00	.00
GIBSON STATION	.00	.00	BURNETTS CHAPEL	.00	.00	PUNCHION CAMP	.00	.00	PISCAN	.00	.00
GOINS CHAPEL	.00	.00	CALVARY	92.86	.00	RED HOUSE	.00	.00	TEN MILE	615.91	5.00
GREERS CHAPEL	.00	26.00	CAVE HILL	239.15	500.00	RIVERVIEW	.00	.00	ASSOCIATION	.00	.00
HARROGATE, FIRST	1,264.00	1,697.83	CENTERVIEW	.00	.00	RUTLEDGE	1,162.84	395.00	TOTAL	665.91	1,392.63
HAYNES FLAT	.00	326.16	CLAY CREEK	.00	.00	SOUTHSIDE	.00	.00	ANTIOCH	800.24	100.00
HEAD OF BARREN	.00	.00	DEEP GAP	.00	73.00	SUNRISE	157.51	75.00	BAILEYTON, FIRST	.00	280.00
HOPE	.00	.00	OEL RIO	.00	10.00	TANPICO	54.20	74.57	BETHANY	92.18	75.00
HOPEWELL	.00	.00	DENTON	391.76	92.60	WASHBURN	25.99	.00	BETHEL VIEW	223.00	223.00
HOWARDS QUARTER	.00	.00	ENGLISH CREEK	607.14	572.48	ASSOCIATION	.00	110.00	BETHEL, BRISTOL	.00	.00
INDIAN CREEK	.00	.00	FRENCH BROAD	112.50	246.65	HAMILTON COUNTY	6,886.84	6,370.94	BETHEL, JOHNSON CITY	56.29	26.00
LIBERTY	.00	.00	GARYERS CHAPEL	.00	.00	ALPINE	703.89	288.00	BEULAH	2,758.86	895.53
LIBERTY HILL	62.00	.00	HOLDERS GROVE	207.28	586.72	APISON	1,209.26	1,777.78	BLOUNTVILLE, FIRST	2,515.21	1,783.74
LITTLE BARREN	.00	.00	LIBERTY HILL	.00	.00	AVONDALE	2,756.88	277.00	BLUFF CITY	1,160.17	418.44
LITTLE CREEK	.00	.00	LINCOLN AVENUE	1,641.30	2,036.57	BARTLEBAUGH	210.00	323.05	BLUFF CITY, FIRST	5,338.01	3,656.89
LITTLE MULBERRY	.00	.00	MANNINGS CHAPEL	249.00	50.00	BAYSIDE	2,480.82	3,760.15	BOONE TRAIL	357.15	.00
LITTLE SYCAMORE	.00	.00	MAPLE GROVE	.00	25.00	BEACON	.00	.00	ROONES CREEK	337.67	1,056.17
LITTLE VALLEY	.00	.00	MOUNT ZION	82.15	.00	BIRCHWOOD	973.86	617.00	ROWMANTOWN	476.83	500.00
LONE HILL	.00	.00	NEW PROSPECT	15.00	.00	BRAINERD	22,500.00	19,910.20	CALVARY, BRISTOL	5,209.00	.00
MCNE HOLLY	.00	.00	NEWPORT, FIRST	2,423.84	4,233.80	BPAINED HILLS	2,946.77	2,249.40	CALVARY, ERWIN	2,971.86	2,156.18
M C M	.00	.00	NORTHPORT	1,259.44	866.00	CEDAR HILL	1,167.83	4,862.60	CALVARY, GREENEVILLE	150.00	.00
MIDWAY	150.00	500.00	PICEON VALLEY	410.86	1,059.51	CENTRAL, CHATTANOOGA	10,355.06	2,336.12	CALVARY, JOHNSON CITY	110.75	108.75
MOUNT GILEAD	.00	.00	PINE SPRINGS	.00	20.00	CENTRAL, MIXSON	14,118.13	6,528.50	CEDAR CREEK	.00	.00
MOUNT PLEASANT	.00	.00	PINEY GROVE	.00	.00	CHAMBERLAIN AVENUE	1,659.92	151.03	CENTRAL, ERWIN	234.00	.00
MOUNT ZION	.00	.00	PLEASANT GROVE	496.85	1,374.91	CHARITY	.00	.00	CENTRAL, JOHNSON CITY	11,499.94	14,981.05
MOUNTAIN VIEW	.00	.00	POINT PLEASANT	.00	.00	CHATTANOOGA, FIRST	16,903.76	37,013.94	CHEROKEE	659.77	805.02
NEW HOPE	.00	.00	RAIS CHAPEL	60.00	100.00	CHATTANOOGA, SECOND	1,104.00	731.00	CHEROKEE MOUNTAIN	.00	.00
NEW SALEM	.00	105.00	SAINT TIOE	.00	.00	CLIFTON HILL	822.83	289.00	CHESSA	389.87	824.00
NEW TAZEWELL, FIRST	1,533.25	574.53	SHADY GROVE	196.02	371.49	CONCORD	5,958.16	183.30	CHINOUAPIN GROVE	2,596.00	

CHURCH	COOPERATIVE PROGRAM	DESIGNATED	CHURCH	COOPERATIVE PROGRAM	DESIGNATED	CHURCH	COOPERATIVE PROGRAM	DESIGNATED	CHURCH	COOPERATIVE PROGRAM	DESIGNATED
SNOW MEMORIAL	655.91	650.00	BLACK OAK HEIGHTS	5,187.59	.00	LORETTA	319.50	150.00	PLEASANT HILL	450.00	32.00
SOLOMONS TEMPLE	.00	90.33	BLOUNT AVENUE	146.00	.00	MACE DONIA	.00	.00	PLEASANT PLAINS	212.82	722.11
SOUTHSIDE	473.00	495.64	BOM VIEW	90.00	.00	MARS HILL	60.00	25.00	POPLAR CORNER	442.98	62.00
SOUTHWESTERN	3,582.45	529.06	BRANVILLE	.00	.00	MEADOW VIEW	925.81	45.00	POPLAR HEIGHTS	3,206.84	3,210.94
STATE LINE	.00	.00	BROADWAY	.00	1,698.50	MOUNT MOREB	225.00	369.20	SANFORD HILL	280.00	282.00
SULPHUR SPRINGS	1,091.29	798.05	BUFFAT HEIGHTS	333.32	.00	NEW PROSPECT	600.00	250.00	SOUTHSIDE	390.00	.00
SUNNYSIDE	.00	2,494.44	BURNETTS CREEK	.00	.00	O. K.	.00	378.00	SPRING CREEK	515.88	.00
SUNRISE	.00	.00	CALLAHAN ROAD	.00	700.00	OAK HILL	.00	150.00	UNITY	175.00	332.00
SUNSET VILLAGE	225.00	75.00	CALVARY	4,500.00	5,157.00	PARK GROVE	164.77	195.00	WARDS GROVE	662.36	318.00
TELFORD	178.95	219.81	CEDAR BLUFF	114.87	.00	PINE GROVE	115.00	.00	WEST JACKSON	11,219.90	10,222.58
TEMPLE, KINGSPORT	.00	212.00	CENTRAL, BEARDEN	11,880.00	7,782.20	PLEASANT GROVE	.00	.00	VESTOVER	2,362.10	1,277.13
TENNESSEE AVENUE	.00	2,000.00	CENTRAL, FOUNTAIN CITY	11,000.00	15,597.61	RANAH	105.00	217.60	WOODLAND	1,855.77	2,521.23
TUSCULUM	458.28	1,209.07	CHURCHWELL AVENUE	1,166.15	1,295.75	ST. JOSEPH, FIRST	328.05	593.80	ASSOCIATION	61,839.51	56,286.80
UNAKA AVENUE	3,224.17	185.89	CITY VIEW	3,144.31	850.99	SUMMERTOWN	428.85	225.00			
UNICOI	951.20	523.05	CLEAR SPRINGS	1,657.63	1,187.45	WEST POINT	153.65	.00			
UNION	50.00	.00	COMMUNITY	.00	.00	ASSOCIATION	.00	.00			
UNIVERSITY PARKWAY	950.25	1,760.03	CONCORD, FIRST	9,166.66	15,819.07	LOUJAL	11,873.70	9,254.46			
VALLEY HILLS	179.00	288.00	COPPER RIDGE	.00	.00	LOUDON COUNTY			ALLENVILLE	14.00	.00
VERNON HEIGHTS	.00	98.50	CORNERSTONE	100.00	.00	ANTIUCH	.00	1,346.22	CALVARY	.00	.00
VIRGINIA AVENUE	627.18	2,198.10	CORRYTON	4,557.53	1,121.86	BALLARD CHAPEL	68.50	40.00	COLUMBIA, FIRST	4,638.25	12,638.73
VOLUNTEER	305.52	.00	CUMBERLAND	4,007.84	5,001.56	BEALS CHAPEL	184.00	212.00	CROSS BRIDGES	205.80	.00
WALKERS FORK	.00	.00	EAST SUNNYSIDE	.00	.00	BLAIRLAND	1,790.72	2,226.06	FAITH	.00	.00
WALNUT GROVE	46.26	210.45	EBENEZER	345.75	.00	CALVARY, LENOIR CITY	4,371.98	532.00	FRIENDSHIP	555.92	1,190.05
WAYLAND	.00	.00	ELM STREET	412.44	.00	CALVARY, LOUDON	.00	.00	HIGHLAND PARK	3,413.02	2,745.89
WEST HILLS	418.44	326.00	EUCALID AVENUE	1,705.06	1,314.60	CAVE CREEK	.00	90.00	HOUSE OF PRAYER	.00	.00
WESTERLY HEIGHTS	389.94	1,013.28	FAIRVIEW	1,919.78	790.93	CORINTH	1,386.31	1,444.90	JOHNSONS CHAPEL	24.80	.00
WOODLAWN	400.00	637.00	FAIR HAVENS	682.85	554.74	DIXIE LEE	3,145.70	887.20	KNOB CREEK	197.46	97.00
ASSOCIATION	.00	.00	FAITH AND HOPE	.00	.00	DOGWOOD	.00	52.57	LAWRENCE GROVE	.00	.00
TOTAL	107,238.38	77,923.22	FELLOWSHIP	225.99	946.51	EVERETT	278.09	.00	MISSION CHAPEL	.00	.00
HOLSTON VALLEY			FIFTH AVENUE	1,500.00	754.54	EVERETT ROAD	20.93	140.38	MOOREVILLE PIKE	.00	252.19
			FLINT GAP	.00	.00	FRIENDSHIP	.00	855.31	MOUNT PLEASANT, FIRST	1,100.00	.00
			FORT HILL	200.00	.00	HIGHLAND PARK	.00	30.00	NORTHIDE	499.98	353.35
			FORT SANDERS	.00	886.00	KINGSTON PIKE	.00	.00	PLEASANT HEIGHTS	1,851.20	930.67
			FOUNTAIN CITY, FIRST	250.00	786.25	LENOIR CITY, FIRST	11,914.96	8,485.79	RIVERVIEW	1,057.00	846.00
			GALILEE	1,040.46	2,973.48	LENOIR CITY, SECOND	255.00	.00	ROCK SPRINGS	375.00	682.00
			GAYLAND MEMORIAL	518.00	160.50	LOUJAL, FIRST	2,874.49	442.54	SANTA FE	85.00	206.68
			GAYLAND HEIGHTS	180.67	712.00	MORGANTON	187.15	.00	SOUTHSIDE	468.40	161.00
			GETHSEMANE	.00	.00	MOUNT PLEASANT	53.92	188.61	SPRING HILL, FIRST	45.00	100.00
			GILEAD	.00	.00	MOUNT ZION	232.29	100.00	SWAN CREEK	25.00	.00
			GILLESPIE AVENUE	737.75	559.50	MOUNTAIN VIEW	.00	.00	THETA	26.29	16.00
			GLENWOOD	2,550.00	1,944.00	NELSON STREET	.00	179.62	VIOLA	30.00	.00
			GRACE	3,861.49	4,387.46	NEW MIDWAY	144.11	270.16	WILLIAMSPORT	117.22	.00
			GRASSY VALLEY	243.62	70.00	NEW PROVIDENCE	1,656.00	550.00	ASSOCIATION	.00	35.00
			GRAVESTON	514.01	130.00	ORAL	450.00	1,257.47	TOTAL	14,709.34	20,230.56
			GREENWAY	1,033.79	350.00	PHILADELPHIA, FIRST	1,211.65	500.00	MIDLAND		
			GROVE CITY	.00	250.22	PINE GROVE	.00	.00	BEAVERDALE	.00	.00
			GROVE HEIGHTS	.00	.00	PLEASANT HILL	3,735.81	1,898.38	BELLS CAMP GROUND	161.15	1,006.00
			GROVE HILL	763.72	238.75	PROSPECT	584.13	866.00	BETHANY	.00	.00
			HIGHLAND	733.79	134.50	RIVERVIEW	323.33	200.00	BETHANY, CORRYTON	.00	.00
			HILL CREST	89.86	63.00	SHADY GROVE	.00	.00	BETHEL, KNOXVILLE	68.43	.00
			HINES VALLEY	.00	.00	SILVER RIDGE	188.23	.00	BISHOPVILLE	117.03	32.00
			HOLLYWOOD HILLS	235.50	407.00	SOUTH HOLSTON	.00	.00	BLACK OAK RIDGE	.00	119.00
			HOLSTON	1,761.34	691.00	STOCKTON VALLEY	174.00	260.00	CEDAR GROVE	.00	.00
			HOUSE MOUNTAIN	.00	.00	STONE POINT	.00	.00	CENTRAL VIEW	56.57	.00
			IMMANUEL	1,328.03	1,141.67	UNION FORK CREEK	376.89	100.00	CLEAR SPRINGS	.00	500.00
			INSKIP	2,000.00	4,028.10	VAUGHNS CHAPEL	459.65	420.79	DEEP SPRINGS	80.95	.00
			ISLAND HOME	1,050.00	1,096.75	WEST BROADWAY	.00	144.76	HINDS CREEK	.00	.00
			JOHN SEVIER	175.00	1,943.27	ASSOCIATION	.00	1,000.00	HINES CREEK MISSIONARY	.00	.00
			JONES CHAPEL	45.00	1,373.00	TOTAL	35,879.61	24,909.79	HOME FAITH	.00	.00
			KINGSTON PIKE	.00	.00	MC MINN - MEIGS			MOUNT HARMONY	.00	.00
			KNOXVILLE, FIRST	24,000.00	34,660.51	ANTIUCH	1,197.73	1,224.25	MOUNT ZION	109.89	.00
			KNOXVILLE, SECOND	969.05	4,605.25	ATHENS, FIRST	13,874.99	9,461.24	NEW LIBERTY	50.00	30.00
			KNOXVILLE, THIRD	.00	.00	BETHEL SPRINGS	26.70	.00	NEW PLEASANT GAP	32.50	.00
			LAKE VIEW	.00	.00	BETHSADIA	.00	.00	OLD BEVERLY	.00	.00
			LINCOLN PARK	9,220.93	5,372.02	BROOKHILL	150.00	.00	PLEASANT GAP	39.55	.00
			LINDEN AVENUE	160.16	160.16	CALHOUN, FIRST	2,640.34	475.00	PLEASANT HILL	.00	.00
			LITTLE FLAT CREEK	756.60	207.75	CALVARY, DECATUR	.00	60.00	RIVERVIEW, CLINTON	374.94	200.72
			LONSDALE	600.00	589.00	CALVARY, ETOWAH	30.00	70.00	RIVERVIEW, ROCKFORD	180.60	.00
			LOVELAND	388.67	.00	CAMBRIA	.00	76.00	STONEWALL	.00	.00
			LYONS CREEK	1,790.19	1,649.94	CENTRAL	879.82	35.00	TEXAS VALLEY	.00	.00
			MARBLE CITY	203.69	1,438.29	CLAY HILL	.00	.00	UNION	514.00	1,105.00
			MARBLEDALE	544.16	.00	CLEAR SPRINGS	.00	200.00	VALLEY GROVE	.00	.00
			MARS HILL	983.49	1,089.10	CLEARWATER	450.00	281.79	ZION HILL	.00	.00
			MASCOT	211.19	162.00	COG HILL	441.31	228.35	ASSOCIATION	.00	10.00
			MC CALLA AVENUE	2,916.66	4,662.50	CONASAUGA	205.84	.00	TOTAL	1,785.61	3,002.72
			MEADOW VIEW	.00	.00	COTTON PORT	100.00	100.00	MULBERRY GAP		
			MERIDIAN	13,251.08	8,059.40	DECATUR, FIRST	359.00	628.00	BEECH GROVE	.00	.00
			MIDDLEBROOK PIKE	75.00	50.00	DIXON AVENUE	.00	57.60	BETHEL	.00	.00
			MIDWAY	15.00	.00	DOUGLE SPRINGS	.00	465.00	BIG CREEK	.00	.00
			MIRACLE	.00	.00	EAST ATHENS	3,709.23	799.69	BIG HILL	.00	.00
			MORCLAND HEIGHTS	.00	.00	EAST NIGTA	.00	250.00	BLACKWATER UNION	.00	.00
			MOUNT CARMEL	835.87	2,687.08	EAST VIEW	140.00	281.00	BREWERS CHAPEL	.00	.00
			MOUNT HARMONY	1,844.27	1,453.00	EASTANALEE	3,904.87	744.50	BRIAR CREEK	.00	.00
			MOUNT OLIVE	5,097.75	4,912.95	ENGLEWOOD, FIRST	.00	1,300.00	BRIDGEPORT	.00	.00
			MOUNT OLIVE, EAST	.00	.00	ETOWAH, FIRST	3,200.00	2,237.85	CARPENTERS CHAPEL	.00	.00
			MOUNTAIN VIEW	304.06	.00	FIVE POINT	.00	.00	CEDAR FLAT	.00	.00
			MYNATT ROAD	.00	.00	GOOD HOPE	365.00	.00	CEDAR GROVE	.00	.00
			NEW HOPE	.00	.00	GOOD SPRINGS	1,315.70	198.00	CEDAR SPRINGS	.00	.00
			NEW HOPEWELL	2,428.31	2,942.28	MIASSEE	.00	.00	CHESTNUT GROVE	.00	.00
			NEW SALEM	.00	.00	MOLEHILL	.00	.00	CHINQUAPIN GROVE	.00	.00
			NORTH ACRES	.00	199.55	ROCKVIEW	178.09	75.00	CLINCH RIVER	.00	.00
			NORTH GLENWOOD	.00	.00	LANOMTOWN	.00	10.00	COBBS CHAPEL	.00	.00
			NORTH HILLS	160.85	.00	MANILLA CHAPEL	.00	.00	COMMUNITY CHAPEL	.00	.00
			NORTH KNOXVILLE	4,243.25	75.00	MARSHALL HILL	.00	.00	COOL BRANCH	.00	.00
			NORTH SIDE	.00	.00	MC MAHAN CALVARY	464.88	.00	DAVIS CHAPEL	.00	.00
			NORTHWEST	70.00	.00	MOUNT HARMONY NO. 1	.00	.00	DRY VALLEY	.00	.00
			NORWOOD	400.00	524.30	MOUNT HARMONY NO. 2	334.20	159.00	ELM SPRINGS	.00	.00
			OAKWOOD	1,800.00	550.00	MOUNT PISGAH	241.00	600.31	FAIRVIEW	.00	.00
			PARKLANE	1,284.08	1,047.75	MOUNT VERD	320.84	.00	FAITH	.00	.00
			PEOPLES MISSIONARY	94.73	27.00	NEW BETHEL	.00	.00	FLAT GAP	.00	.00
			PINEY GROVE	.00	256.03	NEW HOPEWELL	44.67	136.94	FOX BRANCH	.00	.00
			POVELL, FIRST	2,652.74	1,431.90	NEW ZION	75.00	.00	FRIENDLIES CHAPEL	.00	.00
			RAMSEY HEIGHTS	.00	.00	NIGTA, FIRST	520.00	447.00	FRIENDSHIP	.00	.00
			REUNION	145.06	25.15	NORTH ATHENS	2,613.77	1,473.52	GAP CHAPEL	.00	100.00
			RIOGEDALE	506.56	816.00	NORTH ETOWAH	4,587.74	2,200.00	GRASSY SPRINGS	.00	.00
			RIDGEVIEW	1,269.05	2,203.61	OAK GROVE	654.25	1,033.75	GRISONS ISLAND	.00	.00
			RIVERDALE	1,138.40	1,117.00	OLD SALEM	300.00	.00	HUBERTS CHAPEL	.00	.00
			RIVERVIEW	1,099.87	1,278.30	PARKWAY	344.40	70.00	IDAS CHAPEL	.00	.00
			ROCKY HILL	.00	.00	POND HILL	.00	.00	LAKE SHORE	.00	23.34
			ROSEBERRY	431.20	1,010.64	POPE AVENUE	417.00	.00	LIBERTY	.00	.00
			RUGGLES FERRY	.00	.00	RICEVILLE, FIRST	579.25	204.92	LIVESAYS CHAPEL	.00	.00
			SALEM	2,262.00	4,042.19	ROCK VIEW	.00	.00	MIDTOWN	.00	.00
			SCOTTISH PIKE	.00	.00	ROCKY MOUNT	.00	.00	MOUNT PISGAH	.00	.00
			SEVEN ISLANDS	.00	.00	ROGERS CREEK	101.73	.00	MOUNT ZION	.00	.00
			SEVIER HEIGHTS	6,338.01	5,306.59	SANFORD	.00	196.56	MULBERRY GAP	108.33	26.30
			SEVIER HOME	471.05	450.38	SHILOH	161.86	114.37			

CHURCH	COOPERATIVE PROGRAM	DESIGNATED	CHURCH	COOPERATIVE PROGRAM	DESIGNATED	CHURCH	COOPERATIVE PROGRAM	DESIGNATED	CHURCH	COOPERATIVE PROGRAM	DESIGNATED
CENTENNIAL	30.00	100.00	ASSOCIATION	.00	.00	BETHLEHEM	1,306.59	537.02	CALVARY	250.00	100.00
CENTRAL	.00	.00	TOTAL	6,426.32	4,218.86	CEDAR HILL	582.85	410.00	CAPLEVILLE	.00	503.23
CHARLOTTE ROAD	1,681.74	647.38	NEW SALEM	.00	.00	CENTER POINT	340.14	289.03	CHARJEAN	.00	.00
COLLEGE GROVE	102.25	210.50	BRUSH CREEK	360.00	80.00	CROSS ROADS	.00	.00	CHEROKEE	7,006.69	21,906.60
CONCORD	569.00	1,169.00	CARTHAGE, FIRST	1,650.00	3,549.19	EASTLAND HEIGHTS	1,657.78	75.00	CHERRY ROAD	4,186.80	3,401.46
CRIEVEWOOD	8,379.03	4,684.77	GORDONSVILLE, FIRST	264.00	150.00	EBENEZER	861.54	1,238.76	COLLIERSVILLE, FIRST	10,236.28	700.00
CROSS KEYS	159.32	558.10	GRANT	.00	75.00	FLEWELLYN	.00	200.00	COLONIAL	7,107.03	636.50
DALEMERE	.00	50.00	HICKMAN	296.00	951.27	GRACE	1,622.93	961.61	CORDOVA	2,258.06	2,126.17
DALEWOOD	12,080.49	7,358.09	JARED	63.00	69.00	GREENBRIER, FIRST	5,388.21	1,405.70	COTTONWOOD HEIGHTS	1,199.93	243.74
DICKERSON ROAD	2,274.89	269.70	JANCASTER	.00	38.00	HOPEWELL	797.06	2,248.18	CRESTVIEW PIKE	850.00	917.90
DICKSON, FIRST	1,894.73	5,445.95	NEW MIDDLETON	435.97	477.00	LIGHTS CHAPEL	1,150.52	960.16	CRESTVIEW	612.23	.00
DOMELSON VIEW	633.34	.00	PEYTONS CREEK	205.00	297.00	MOUNT CARMEL	6,012.01	3,208.13	DELLWOOD	400.75	798.35
DOMELSON, FIRST	13,765.08	6,042.37	RAULS CREEK	.00	.00	NORTH SPRINGFIELD	2,160.00	588.25	EADS	162.00	213.60
EASTLAND	4,882.20	336.06	RIDDLETON	106.59	2.55	OAK GROVE	4,248.65	514.61	EAST ACRES	247.38	166.00
EASTSIDE	.00	131.25	ROME	300.40	222.00	OAKLAND	612.50	111.11	EAST PARK	5,658.78	6,634.89
EASTWOOD	502.30	389.72	ASSOCIATION	.00	.00	ORLINDA	2,983.40	1,959.89	EGYPT	901.91	.00
EDGEFIELD	2,734.75	2,896.01	TOTAL	3,680.96	5,951.01	PLEASANT HILL	2,029.65	948.36	ELLENDALE	2,641.01	2,400.46
ELKINS AVENUE	482.82	223.30	NOLACHUCKY	.00	.00	RED RIVER	1,575.84	464.41	ELLISTON	800.00	39.00
EWING	1,535.00	275.00	ALPHA	537.30	.00	RIDGETOP, FIRST	481.68	365.06	EMMANUEL	80.72	.00
FAIRVIEW	741.00	440.68	BETHEL	1,084.56	745.00	ROCK SPRINGS	245.38	416.61	EUDORA	5,499.99	819.64
FAIRVIEW, FIRST	528.67	695.67	BEULAH	411.47	515.40	SPRINGFIELD	9,000.00	4,498.07	FAIRLAWN	159.14	1,650.21
FAITH TEMPLE	207.56	132.80	BIBLES CHAPEL	386.33	1,214.57	SPRINGHILL	283.00	184.00	FELLOWSHIP	174.36	.00
FERN AVENUE	.00	.00	BRIAR THICKET	93.76	.00	WHITE HOUSE, FIRST	2,621.62	1,573.41	FISHERVILLE, FIRST	499.98	820.59
FOREST HILLS	3,494.36	3,809.13	BROWN SPRINGS	151.59	.00	WILLIAMS CHAPEL	221.55	561.65	FOREST HILL	302.69	85.41
FRANKLIN, FIRST	4,702.89	75.00	BUFFALO TRAIL	1,721.82	1,847.88	ASSOCIATION	.00	.00	FRASER	7,775.43	5,724.39
FREELAND	.00	58.95	BULLS GAP	885.74	495.89	SALEM	56,268.04	27,315.62	GEORGIAN HILLS	3,839.35	4,862.73
FRIENDLY CHAPEL	31.47	27.35	CALVARY	.00	3,000.00	AUBURN	374.35	162.86	GERMANTOWN	11,203.82	7,326.87
GALLATIN ROAD	3,569.09	2,451.20	CALVUE	.00	.00	BUNT	590.00	108.40	GLEN PARK	1,300.00	1,158.58
GLENDALE	2,712.51	1,128.25	CATHERINE NENNY	694.46	220.00	CALVARY	184.55	357.00	GRACELAND	5,272.84	720.84
GLENWOOD	1,299.00	.00	CEDAR CREEK	.00	1,426.90	CENTER HILL	154.52	78.92	GRAMAN HEIGHTS	.00	.00
GOODLETTSVILLE, FIRST	5,114.00	66.00	CEDAR GROVE	.00	.00	COOPER CHAPEL	.00	.00	GREENHILLS	1,797.84	.00
GRACE	4,485.04	2,016.62	CENTRAL	.00	185.00	COVENANT	.00	.00	GREENLAW	280.00	.00
GRANDVIEW	5,591.20	2,692.07	CHEROKEE HILLS	.00	.00	DALE RIDGE	81.97	65.15	HAVENVIEW	86.16	.00
GRASSLAND HEIGHTS	.00	.00	CONCORD	208.00	59.00	DOWELL TOWN	73.00	115.00	HICKORY HILLS	3,489.16	123.70
GRAYS POINT	114.40	100.00	COUNTRY CHURCH	.00	.00	DRY CREEK	180.50	.00	HIGHLAND HEIGHTS	11,250.00	6,595.97
GREEN HILL	1,992.05	1,994.45	ENTERPRISE	175.13	1,473.41	ELIZABETH CHAPEL	233.00	217.00	HOLLYWOOD	1,102.00	492.65
HARPETH HEIGHTS	2,235.06	2,945.38	FAIRFIELD	.00	109.33	INDIAN CREEK	112.76	100.00	HOLMES STREET	150.00	360.00
HARSH CHAPEL	704.50	652.22	FAIRVIEW	776.27	456.17	MOUNT HERMON	192.99	169.00	JACKSON AVENUE	.00	.00
HAYWOOD HILLS	8,418.06	3,077.40	FERNWOOD	30.00	555.00	MOUNT ZION	.00	.00	KENSINGTON	1,500.88	2,446.47
HENDERSOINVILLE, FIRST	8,332.00	9,416.91	FRIENDLY VIEW	.00	.00	NEW HOME	.00	.00	LA BELLE HAVEN	1,507.08	147.00
HERMITAGE, FIRST	512.93	300.00	GRACE	895.69	.00	NEW HOPE	70.86	105.00	LA BELLE PLACE	1,482.47	.00
HERMITAGE HILLS	4,000.00	2,111.08	HIGHLAND	77.45	.00	PLAINVIEW	169.00	47.50	LAKESHORES	931.50	3.00
HILLCREST	366.83	360.74	HILLCREST	2,233.33	.00	PLEASANT VIEW	116.49	50.00	LAMAR HEIGHTS	4,680.19	3,408.14
HILLHURST	.00	2,067.04	HOLTS	.00	300.00	SALEM	624.99	784.83	LEACLAIR	5,406.88	1,454.48
HILLSBORO	70.00	173.43	KIDWELLS RIDGE	.00	800.00	SHILOH	197.55	135.48	LEAWOOD	10,999.95	5,099.63
HOLIDAY HEIGHTS	799.62	.00	LEADVALE	630.84	1,133.72	SMITHVILLE	800.00	1,631.42	LONGCREST	122.82	642.08
IMMANUEL	4,735.72	3,977.04	LEBANON	475.00	419.50	SNOW HILL	219.18	75.00	LUCY	937.86	998.58
INGLEWOOD	9,284.96	6,009.33	MACE DONIA	.00	.00	SPICEMORE	243.16	165.85	MALCOLM ROAD	150.00	90.00
IVY MEMORIAL	504.91	886.35	MAGNA VIEW	1,032.89	194.50	SUPER HILTON	118.39	179.00	MALLORY HEIGHTS	.00	.00
JOELSON, FIRST	3,165.95	6,545.11	MANLEY	6,697.19	7,343.14	WEST MAIN	300.00	736.00	MC LEAN	1,000.00	2,455.36
JUDSON	3,092.54	105.00	MONTVUE	502.31	.00	WHORTON SPRINGS	413.26	153.91	MEMPHIS, FIRST	27,440.00	26,922.94
LAKEVIEW	4,020.00	3,377.00	MORNING SIDE	.00	.00	WOLF CREEK	.00	138.85	MEMPHIS, SECOND	3,996.09	6,120.93
LAKESIDE	.00	.00	MORRISTOWN, FIRST	24,046.78	8,786.89	WOODBURY	2,273.00	2,700.00	MERTON AVENUE	2,809.47	4,115.07
LIBERTY	3,495.40	1,743.16	MOUNT ZION	105.00	467.00	ASSOCIATION	.00	.00	MILLINGTON, FIRST	7,643.20	2,751.24
LINCOLN HILLS	3,728.26	2,319.96	MOUNTAIN VALLEY	.00	.00	SEQUATCHIE VALLEY	7,723.54	8,410.17	MILLINGTON, SECOND	689.26	.00
LOCKLAND	306.18	84.00	PARKWAY	.00	.00	BAPTIST HILL	157.57	157.00	MOUNTAIN TERRACE	1,800.00	165.00
LYLE LANE	1,116.13	446.61	PLEASANT RIDGE	467.80	400.00	CARTWRIGHT	454.19	235.51	MULLINS STATION	1,324.56	410.93
MADISON CREEK	3,442.42	1,646.38	PLEASANT VIEW	600.00	920.60	COLD SPRINGS	.00	127.78	NATIONAL AVENUE	3,998.01	3,790.00
MADISON HEIGHTS	6,143.44	1,984.02	ROBERTSON CREEK	.00	.00	DAUS	102.63	.00	NEW ALLEN ROAD	382.22	449.54
MADISON, FIRST	824.68	565.67	ROCKY POINT	360.45	705.66	DUNLAP, FIRST	2,048.44	283.00	NORTH FRAYSER	120.00	462.29
MILL CREEK	.00	87.00	ROE JUNCTION	.00	50.00	EAST VALLEY	.00	.00	NORTHVIEW	3,937.68	982.32
MILLERSVILLE, FIRST	31,246.57	14,951.05	RUSSELLVILLE	.00	1,869.27	EBENEZER	496.22	163.65	OAKHAVEN	5,017.24	.00
NASHVILLE, FIRST	1,170.96	970.66	STATEN GAP	.00	.00	EWTONVILLE	834.05	552.68	OAKLAWN	992.14	509.00
NASHVILLE, THIRD	1,738.46	225.75	SUNRISE	35.92	446.54	FLAT MOUNTAIN	228.19	.00	DAKVILLE MEMORIAL	2,268.27	417.60
NEELYS BEND	1,353.90	1,148.23	THANKFUL	.00	.00	GRACE	109.10	.00	ORCHI	150.00	101.00
NEW HOPE	7,157.58	7,467.21	THREE SPRINGS	.00	.00	JASPER, FIRST	2,496.96	2,368.51	PARK AVENUE	5,302.84	7,030.49
PARK AVENUE	2,635.00	2,021.24	VALLEY VIEW	.00	.00	KIMBALL	513.00	412.00	PARKWAY VILLAGE	6,376.64	257.68
PARKWAY	1,343.96	1,990.60	WARRENSBURG	478.40	567.75	LAAGER	24.00	.00	PEABODY	390.00	1,885.53
PEGRAM, FIRST	1,408.58	220.35	WESTVIEW	.00	.00	LEES STATION	45.87	.00	PEOPLES AVENUE	56.10	429.57
PEYTONSVILLE	.00	.00	WHITE OAK GROVE	350.49	600.00	LITTLE HOPEWELL	.00	.00	PRESBOTT MEMORIAL	.00	.00
POMONA	257.50	146.00	WHITESBURG	257.13	370.00	MIDWAY	78.62	.00	RALEIGH	8,456.34	9,694.29
RADFORD	954.16	75.00	WITT	470.73	144.00	MINERAL SPRINGS	.00	.00	RALEIGH HEIGHTS	44.00	.00
RADNOR	480.45	35.00	ASSOCIATION	.00	.00	MOUNT CALVARY	128.58	106.00	RALEIGH NORTH	.00	.00
RATON CITY	400.00	350.00	TOTAL	47,257.36	37,973.62	PALMER, FIRST	91.19	.00	RANGE HILLS	1,547.25	1,411.21
RICHLAND	2,286.46	298.04	NORTHERN	.00	.00	PIKEVILLE, 1ST SOUTHERN	1,027.62	317.56	RICHMOND	1,750.27	.00
RIVERSIDE	.00	17.35	ALDER SPRINGS	.00	.00	RICHARD CITY, FIRST	105.00	150.00	RIDGECREST	506.68	176.50
ROSEDALE	.00	.00	BLUE SPRINGS	.00	.00	SEQUATCHIE, FIRST	630.91	.00	RIDGEWAY	7,249.98	16,752.67
SALEM	.00	.00	CARRS BRANCH	.00	102.70	SOUTH PITTSBURG, 1ST	5,274.08	2,402.78	ROSE HILL	.00	.00
SATURN DRIVE	4,409.65	2,091.45	CEDAR FORD	501.28	250.00	SOUTH WHITWELL	190.00	.00	ROSEMARE	.00	.00
SCOTTSBORO	359.07	183.66	CLEAR BRANCH	127.46	426.00	WHITWELL, FIRST	531.17	.00	RUGBY HILLS	3,468.48	81.50
SHELBY AVENUE	2,781.61	1,193.32	COMMUNITY	.00	.00	ASSOCIATION	.00	.00	SCENIC HILLS	1,983.60	204.14
SMITH SPRINGS	600.00	1,000.00	HICKORY VALLEY	.00	.00	SEVIER COUNTY	15,627.39	7,500.47	SHELBY FOREST	1,438.58	167.00
SOUTH GATE	1,437.82	387.32	HIGHLAND	.00	.00	ALDER BRANCH	1,268.65	1,372.00	SHERWOOD	477.06	352.54
TEMPLE	1,951.00	2,250.00	HUBBS GROVE	.00	.00	ANTILOC	468.04	10.00	SKYVIEW	1,387.58	.00
TULIP GROVE	75.00	78.50	LEATHERWOOD	.00	.00	BANNER	294.13	.00	SOUTHMOOR	6,440.37	5,445.11
TUSCULUM HILLS	3,944.97	1,916.86	LILY GROVE	.00	.00	BEECH SPRINGS	328.50	1,072.66	SPECKMAN TERRACE	1,023.00	883.50
TWO RIVERS	3,041.67	747.00	LOME MOUNTAIN	.00	25.00	BELLS CHAPEL	.00	.00	SUMNER AVENUE	278.89	310.00
UNA	1,830.18	267.46	MAYNARDVILLE	456.38	216.79	BETHEL	.00	.00	TCMULANOMA	.00	.00
UNION HILL	1,272.79	267.00	MAYE HILL	.00	.00	BLOWING CAVE	10.25	.00	TEMPLE	8,804.31	6,359.34
VALLEY VIEW	2,236.45	3,156.55	NEW FRIENDSHIP	.00	.00	BOYOS CREEK	536.77	810.61	TOWERING OAKS	.00	.00
WALKER MEMORIAL	202.28	60.00	NEW SALEM	.00	.00	BRADLETTS CHAPEL	.00	.00	TRAFALGER VILLAGE	1,217.34	37.28
WEST NASHVILLE	169.11	45.52	TAYLORS GROVE	.00	.00	CALVARY	176.88	50.00	TRINITY	4,190.00	717.92
WEST TRINITY LANE	40.00	26.00	UNION	.00	.00	CARTERTOWN	.00	.00	UNION AVENUE	3,312.20	8,044.55
WESTVIEW	1,780.00	2,216.01	WARWICKS CHAPEL	114.75	30.00	CONNER HEIGHTS	.00	.00	VICTORY HEIGHTS	63.40	600.00
WHITE BLUFF, FIRST	659.88	130.45	WILLOW SPRINGS	.00	.00	COVEMONT	14.00	.00	WALNUT GROVE	268.28	.00
WHITSETTS CHAPEL	624.42	280.00	ASSOCIATION	.00	.00	DRIPPING SPRINGS	87.32	.00	WELLS STATION	5,716.87	4,173.77
WHITWORTH	.00	.00	TOTAL	1,199.87	1,050.49	DUPONT	253.90	580.37	WEST FRAYSER	100.00	.00
WOODBINE	5,273.83	3,140.39	ANTIOCH	154.54	161.00	FRENCH BROAD VALLEY	90.00	.00	WEST HAVEN	150.00	90.00
WOODCOCK MEMORIAL	333.64	159.25	ARCHVILLE								

Religion surfaces in abortion debate

By W. Barry Garrett

WASHINGTON—The battle over abortion has been joined throughout the nation by two major groups who describe their views as “right to life” and “freedom of choice.” The issue over abortion has been described by observers in Washington as one of the most emotional and volatile that has ever descended on the heads of members of Congress.

The “right to life” people, headed primarily by the Roman Catholic hierarchy but by no means confined to the Roman Catholic Church, have organized for a national push for a constitutional amendment to prohibit abortions.

The “freedom of choice” people, spearheaded by the National Abortion Rights Action League and supplemented by the Religious Coalition for Abortion Rights, support the U.S. Supreme Court ruling that the right to abortion is a constitutionally guaranteed right and that the decision about abortion should be between a woman and her physician.

The abortion battle has taken on two major thrusts as far as legislation and gov-

ernmental action are concerned. The first attempt was to push through a constitutional amendment prohibiting abortions, thus overthrowing the Supreme Court decision. Failing in that attempt in Congress, the “right to life” advocates are feverishly working on both the state and federal levels to defeat programs of governmental aid to pay for abortions.

Since a proposed constitutional amendment on abortion was defeated in the Senate Judiciary Committee, the “right to life” people are now campaigning among state legislatures to call for a constitutional convention to achieve the same end. The “freedom of choice” people are equally opposed to laws restricting abortion and to the proposed constitutional convention.

Two recent events in the nation’s capital point up the intensity of the abortion battle. In January, the March for Life attracted participation by an estimated 28,000 to 70,000 persons to demonstrate and lobby for anti-abortion governmental activity. In February, the National Abortion Rights Action League held its 9th annual meeting to extend its organization and to press its views into all the states as well as Congress.

According to the report on the March for Life in the *Catholic Standard* of Washington, the movement took on an overwhelming Roman Catholic religious tone. The day was begun by a rosary on the Ellipse and religious signs permeated the parade to the White House.

The March for Life focused on two targets—President Carter and the Congress. Nellis Gray, president of the march, charged Carter with working against “pro-life” issues, in spite of his anti-abortion stand during the presidential campaign. While in town the March for Life crowd saturated Congress with lobbying activities aimed at anti-abortion legislation.

The four-day meeting of NARAL focused on lobbying techniques and on plans to extend its activities into the states. It brought its membership up-to-date on abortion litigation and legislation and lobbied heavily in the halls of Congress.

A major event of the NARAL meeting was a breakfast honoring Sen. Edward Brooke, who has been a leading fighter in Congress against legislation that would restrict federal funding for abortions for needy people. The focal point in Congress is the so-called Hyde Amendment, proposed as a rider on much legislation in recent years. Introduced by Rep. Henry J. Hyde, the amendment would prohibit the use of federal funds for abortions.

Since 1978 is an election year, both the anti-abortion forces and the “right of choice” people are making abortion an election issue in all of the states. Both groups seek the nomination and election of public officials who will support their viewpoint on abortion. Due to the religious and emotional nature of the abortion issue and the dedication of both sides, it could mean that in this and future elections abortion will be a determining factor in the formulation of public policy in many areas, depending on which candidates win the elections.

Although the Roman Catholic hierarchy is trying to establish its views on abortion as a “right to life” issue for the unborn fetus, the “right of choice” forces are increasingly insisting that abortion is a religious issue. The NARAL and the Religious Coalition for Abortion Rights claim that the Catholics are trying to impose by legislation their moral and religious views on the entire population. They say that such a movement ignores a large segment of the American population who are just as religiously concerned for quality of life and who believe that abortion should be an individual choice not to be decided by force of law or by those who hold differing religious views.

One thing is certain—the abortion issue is not near the point of settlement either in government or in religious circles. It appears that both religious bodies and government entities are in for a long and bitter struggle over the question of prohibiting abortions or allowing individuals freedom to choose a way of life based on their own religious persuasion and their concern for good health and constructive social conditions. (BP)

To change or correct your address

Attach label from your latest copy here and show new address below—include zip code. When changing address please give two weeks notice. Please write, do not call address changes to insure accuracy.

All correspondence relating to your subscription

should be accompanied by your address label. If you are receiving duplicate copies please send both labels.

Address all requests to:

BAPTIST AND REFLECTOR
Post Office Box 347
Brentwood, Tennessee 37027

Name please print

Address

City

State Zip Code

CHURCH FURNITURE

Attn: adv. R. G. Ketron 615-577-8716
3401 Montlake Dr.
Knoxville, Tennessee 37920
Call or write for church furniture brochure.

CHURCH STEEPLES

- “FIBERGLASS WITH STEEL STRUCTURES”
- 15 YEARS MFG. EXPERIENCE - 100'S OF MODELS
- COMPLETE ERECTIONS BY GLASSTECH
- 10 YEAR WARRANTY “IN-PLACE”
- STAINED FIBERGLASS WINDOWS
- “BELFRY” MAGNETIC TAPE CARILLON SYSTEMS
- WALL CROSSES

