

# Baptist and Reflector

Vol. 145/No. 8/February 21, 1979

News journal of Tennessee Baptist Convention

## Iran missionary's plans unknown in evacuation

The plans of Southern Baptist missionaries to Iran, Mr. and Mrs. Henry E. Turlington, were unknown on Monday of this week as approximately 5,000 Americans were being evacuated from that war-torn country. Representatives of the Foreign Mission Board said that they had been unable to contact the Turlingtons in recent days.

Late Sunday, 794 Americans landed in Frankfurt, West Germany, on the second day of a scheduled four-day airlift to evacuate U.S. citizens. Apparently, the Turlingtons were not among this group.

According to reports, about 2,000 Americans were to remain in Iran as a "skeleton" crew to operate various U.S.-related companies and organizations. Turlington has repeatedly said that he wants to remain in Tehran, the nation's capital, if he would be permitted to minister to these through the English-speaking church pastors.

It is not known at this time how much religious freedom will be allowed under the regime of Ayatollah Ruhollah Khomeini, a Moslem leader who is presently in control of the government.

Last week, the United States embassy had suggested that all U.S. citizens with non-essential responsibilities should be evacuated.

The Turlington's church in Tehran has about 350 members. However, because of earlier evacuations and terrorists activities, attendance has declined. At the regular Friday service on Feb. 9, only 29 were present.

Southern Baptists had eight mission workers in Iran before the civil war began.

Mr. and Mrs. Kenneth Glenn are now in Georgia. Mrs. Glenn and their three children came to the United States in November because of violence in the city of Ahwaz, where they worked with an English-speaking congregation. Glenn left in late December.

Mr. and Mrs. James Kirkendall were stationed in Tehran. He is the FMB field representative for Iran, India, and Bangladesh. They were in India when the conflict erupted, and have come to the United States.

Missionary journeyman Joe Sowder, who was working with the Turlingtons, left Tehran earlier this month. After a short visit in Texas, he will be transferred to work in a youth ministry in Aberdeen, Scotland.

A volunteer worker, Herbert Williams, was stationed in Shiraz. He has returned to Arkansas, because of conditions in that area.

It is the policy of the Foreign Mission Board to let each missionary determine whether or not to remain at his post when political or natural crises occur.

Southern Baptists named their first missionary to Iran in 1968 to accept an opportunity to teach English to Muslim theological students in the University of Tehran. An English-Language Baptist congregation was formed in 1972 in Tehran. Other English-language churches were started later in Ahwaz and Shiraz.



**TENNESSEANS TO SERVE**—Two Nashville Baptists were elected as new officers for the Baptist Sunday School Board's board of trustees. John Daley, left, pastor of Brook Hollow Baptist Church, was elected as secretary; and John Gifford, right, a member of Immanuel Baptist Church, will serve as chairman of the executive committee. With Daley and Gifford are Grady Cothen, president, BSSB, and Norman Wiggins, chairman of the board of trustees and president of Campbell College, Buies Creek, N.C.

## Protests bring revision in IRS school ruling

WASHINGTON (BP)—The Internal Revenue Service, in response to protests from the educational and religious community, has issued a revised revenue procedure to limit tax exemption of schools considered racially discriminatory.

The original proposal by IRS, issued Aug. 22, 1978, aroused a storm of protest. That proposed procedure would have required all private elementary and secondary schools to prove that they operate on a racially non-discriminatory basis or risk losing their tax exemption.

Public comments on the new procedure must be submitted to the IRS by Apr. 20, 1979. Congressional hearings on the procedure were scheduled in the House Committee on Ways and Means, Feb. 20-21. Among those groups scheduled to testify is the Baptist Joint Committee on Public Affairs.

The new procedure "gives greater weight to each school's particular circumstances...in determining whether a school is racially discriminatory," according to an IRS statement.

The new guidelines would affect schools held by a court or government agency to be racially discriminatory and those schools, formed or expanded about the time of public school desegregation in their communities,

which do not yet have significant minority student enrollment.

The revised procedure retains the provision that "significant minority enrollment" is 20 percent or more of the percentage of the minority school age population in the community served by the school.

The IRS statement listed facts which would be taken into account in judging whether a school would be considered discriminatory. The IRS statement also noted that growth which took place "in accordance with a long-standing practice of a religion or religious denomination, which itself is not racially discriminatory, to provide schools for religious education" would tend to indicate that such expansion was not related to public school desegregation.

Facts which would tend to suggest to the IRS that a school discriminates racially would include the use of former public school facilities made available when desegregation took place, opposition by the school or its officers to desegregation of the public schools, or limiting of enrollment in the school to a geographic area with few or no minorities when such an area is subject to a desegregation plan.

The revised IRS procedure provides that schools which might be questionable in racial policy may retain tax exempt status if they show they have attempted to recruit minority students and professional staff, offer financial assistance on an equal basis to minority students, or clearly indicate to persons in the minority community that they are welcome at the school.

## Missionary to deaf joins BSSB

NASHVILLE—John Cooper has recently begun work at the Sunday School Board as editor of special ministries materials.

A native of Tennessee, Cooper holds degrees from Middle Tennessee State University, Murfreesboro; George Peabody College, Nashville; and Southern Baptist Theological Seminary, Louisville, Ky.

## Stevens to take early retirement from Radio-TV agency leadership

FORT WORTH—The trustees of the Southern Baptist Radio and Television Commission have accepted "with regrets" the announced retirement plans of its president, Paul M. Stevens. His retirement from that post will become effective Oct. 31, 1979, although he will be retained as a consultant until his 65th birthday in October 1980.

The trustees also honored Stevens' request that he be relieved of all executive responsibilities as of Feb. 15. Harold E. Martin, executive vice-president has assumed complete administrative and operational authority of the SBC agency.

A press release issued by the commission staff said that Stevens' early retirement is because of medical problems. He has been having considerable back pain growing out of a World War II injury.

The announcement of Stevens' retirement and the shift of executive responsibilities was made at the conclusion of a three-day meeting of the commission trustees at the Fort Worth office. According to Fredrick W. Issacs Jr. of Cosby, a trustee from Tennessee, about 95 percent of the meeting was spent in closed executive session, so that the trustees could

hear reports from several trustee committees which are reviewing various aspects of the commission and its leadership.

Trustee chairman Ray Scroggins of Houston, Tex., told the Baptist Standard, Texas state newspaper, that the trustees are opening themselves to "introspective questioning" about the commission's direction. He said the trustees have come "to a realization of the magnitude of the responsibility of being trustees for an agency of the Southern Baptist Convention and the realization that the trustees must fulfill their responsibility in trust for people who elected them—Southern Baptists, the Southern Baptist Convention, (Continued on page two)



Stevens

## Wood attacks government intrusion

WASHINGTON (BP)—Calling government intervention in religion "the dominant trend" in U.S. church-state relations, James E. Wood Jr., executive director of the Baptist Joint Committee on Public Affairs, denounced government attempts to control the churches.

Wood told participants at the Lutheran Consultation on the Nature of the Church and its Relationship with Government that government intervention in church affairs is "a serious threat both to the prophetic role of religion and to the constitutional guarantee of 'the free exercise of religion'."

He noted that current efforts to regulate the lobbying activities of religious groups, to provide a tuition tax credit for students at parochial schools, to investigate religious "cults," and to impose Internal Revenue Service regulations on tax exemption of schools and other church agencies violate the "right of the church to be free of accountability to and control by the state."



## Baptist persistence in Ecuador results in high baptisms, hope

CUENCA, Ecuador (BP)—Turmoil, turbulence and trials joined forces against them, but Baptists in Ecuador weathered the crises and now record baptisms promise hope.

Since 1975, evangelicals working in this area have been targets of violence. Physical attacks, verbal abuse and other tactics threatened to discourage Baptists and Southern Baptist missionaries from establishing and continuing work for the gospel of Jesus Christ.

Despite opposition, 50 believers were baptized recently in a combined service with First Baptist Church of Cuenca and Jesus the Good Shepherd Baptist Church of Tambo. It was the largest number of baptisms recorded at one time in the area. The Tambo church alone baptized 41.

Baptist work in Cuenca, begun in 1970 by Southern Baptist missionaries Archie and Julia Jones, grew rapidly. Later Cuenca began a mission in Canar. Work in Tambo also was well grounded. Today, services are held in alternating months in Tambo and Canar.

Not everyone, however, has seen the fruit of the labor. In 1976 Julia Jones was diagnosed with cancer. The family left for the United States, where she died in 1978. Jones, now a pastor in Mocksville, N.C., hasn't seen Ecuador for almost three years.

"The whole valley was watching this

fight," Jones said, remembering the first years. "All this drew attention to us and people began to ask, 'Why are they (the Baptists) here? What's this all about?'"

That curiosity apparently laid the ground work leading to the recent baptisms, and perseverance among the believers.

As the 160 attending the baptisms heard account after account of the Lord's protection and care, Cuenca deacon Wilson Serrano stood with tears in his eyes and said: "It was Brother Archie's dream to see this church building filled with believers. I hope he can come back to see what God is doing."

For now, Archie Jones will remain in the states as a father to his children, pastor to his congregation and encourager of missions. He has no firm answers, but definite desires: "I'm planning to go back...and I probably will."

## Lick Creek church waits 153 years for Southern Baptist occupation

The name of the settlement is Lick Creek. You cannot find it on a state map of Tennessee, but Baptists are at work there. They decided many months ago not to give up in their efforts to establish a Southern Baptist church in the area.

Located in west Tennessee, 16 miles from Decaturville and northwest of Linden, a small church building has sat on the property since 1910, but was used by the Primitive Baptists until about three years ago. The history of the church actually dates back to 1825, when it was constructed as the first church in Perry County. Known as Union Primitive Baptist Church, the original log building burned in 1910. The present one-room frame building was constructed soon after the fire.

The church building is presently owned by Mr. and Mrs. Sam Kidd, whose farm adjoins the church property. Mrs. Kidd's great, great grandfather deeded the land to a Baptist church in 1852. No provision was made for the building if the church should cease to exist.

Mr. and Mrs. Kidd moved back to the family's farm after her father and mother died several years ago. The Kidds bought the property back from the Primitive Baptists, who had voted to disband and move to Linden. At that time, the Kidds made the church available to a congregation, which also later disbanded.

During the same time in nearby Decaturville, Don Franks, pastor of First Baptist Church, was experiencing an urgency in his feelings related to missions.

Years earlier he had felt the call to full-time mission work, but when he inquired with the Home and Foreign Mission Boards, he found he could not be appointed because he had had polio as a teenager.

Franks had heard of the existence of the little church and made a trip to the site one day about a year ago. He told Baptist and Reflector that before he could get away after viewing the church, three families met him and asked him to help start a Southern Baptist church.

"The only thing I knew to do was to come back to First Church and ask them if they



**DEBT PAID**—Parran's Chapel Baptist Church in Bolivar held note burning services recently marking the payment of a \$60,000 note accumulated in 1976 when the church built an educational facility. The building committee, from left to right are: Ricky Carver, Oma Garrett, Hubert Garrett, Royeline Pulliam, and Pastor Doug Baker. The committee's chairman, Lenard Watson, died in June 1978. The service was dedicated to his memory.

## HMB sets meet for volunteers

ATLANTA (BP)—In a tribute to the volunteer, the Southern Baptist Home Mission Board announced it will sponsor Missions USA 80s, a conference for volunteers, April 24-27, 1980, at the Atlanta Civic Center Auditorium.

The board's directors in their February meeting also appointed two missionaries and nine missionary associates and approved 13 pastors to receive financial aid. Two of the missionary associates have Tennessee connections.

"The approaching 80s will be the decade of the volunteer," said William G. Tanner, executive director-treasurer of the SBC Home Mission Board.

Last year volunteers in home missions numbered more than 21,600. The volunteers, both old and young, served for a week to a year in capacities ranging from pastor to carpenter, from directing music to teaching Bible or leading Vacation Bible Schools, from plumbing to practicing law.

Nearly 100 served as home missions Mission Service Corps volunteers in the SBC plan to place 5,000 volunteers for one and two year terms alongside missionaries at home and abroad by the year 2000.

Plans for the volunteer conference include preliminary meetings for groups with responsibility to enlist and supervise volunteers in home missions. The meeting officially begins on Thursday night and closes on Sunday, enabling laypersons to use their weekend to attend.

"It is more than fitting that a national conference give recognition to this army of volunteers," Tanner said. "Without them, missions in the United States in the 80s will limp or crawl. With them, missions hold the promise of accomplishing the objectives of Bold Mission Thrust: evangelizing and congregationalizing our nation."

Jim and Irene Murphy, both graduates of Carson-Newman College, Jefferson City, were appointed as missionary associates to Anderson, S.C. Now residing in Warner Robins, Ga., Murphy will serve as director of Christian social ministries for that city. In addition to his degree from Carson-Newman, he earned the master of sociology degree from the University of Tennessee, Knoxville.

## Stevens retirement

(continued from page one)

and the rank and file membership of various states of our convention."

In praising Stevens' work in making the commission into a broadcast leader, Scroggins noted that "some years ago trustees initiated plans toward providing a retirement policy of approximately 60 percent of his salary at retirement. The retirement policy is still under study because of his early retirement and possibly will be announced following the October trustee meeting." Stevens' present salary is \$45,234. In addition, he is living in a house owned by the commission with utilities and maintenance provided.

Issacs is serving as chairman of a search committee to recommend a new president for the Radio and Television Commission. He is president of Athletic Association Inc. and sports consultant for Colgate-Palmolive Co., Knoxville. He is a member of English Creek Baptist Church in the East Tennessee Baptist Association.

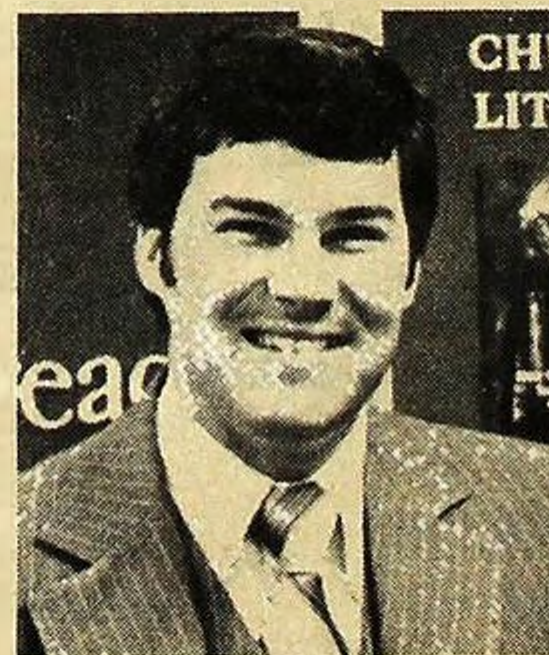
Other members of the search committee are John E. Hughes, pastor of First Baptist Church, Independence, Mo.; George Miller of Miller and Spencer Law Firm, Oklahoma City, Okla.; Jess P. Odom, president of Jess Odom Enterprises Inc., North Little Rock, Ark.; and Franklin A. Perry, pastor of First Baptist Church, Laurel, Md.

At a press conference in Fort Worth last Thursday at which his retirement was announced, Stevens said his future activities will "certainly include a continued deep interest in the public affairs of Fort Worth, which has been so good to me and to the Radio and Television Commission." He held out the possibility that he might seek public office in Fort Worth and would seek to organize a coalition of denominational communications leaders to bring pressure against persons and organizations abusing the field of religious broadcasting.

Stevens became chief executive of the SBC agency in 1953, after the death of its first director, Sam Lowe.

Today the commission produces 32 radio and television programs in 10 languages, which are heard every week on 3,275 stations. In addition, Baptists are represented regularly on national television networks.

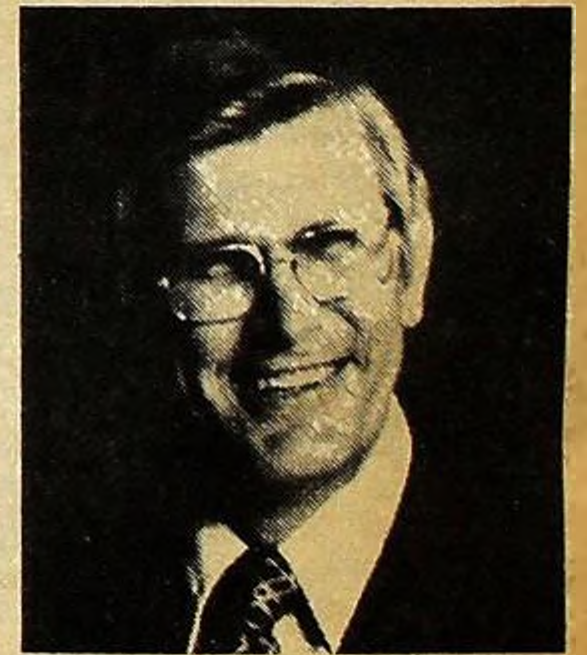
Before assuming his present position, he was pastor of churches in Texas and Oklahoma and served as a U.S. Air Force chaplain. He is a graduate of Baylor University, Waco, Tex., and Southwestern Baptist Theological Seminary, Fort Worth.



Sanders



Smith



Pierce

## Bus outreach, children's worship clinic to be held in Lebanon

A regional bus outreach/children's worship clinic, sponsored by the Sunday School departments of the Tennessee Baptist Convention and the Baptist Sunday School Board, will be held at Immanuel Baptist Church in Lebanon, Mar. 2-4.

All directors, team members, captains, drivers, leaders, and assistants are invited to attend, according to Wendell Price, state Sunday School director.

Leadership secured to train the workers includes: Ben Smith, pastor of Lakeland Baptist Church in Lakeview, Tex.; J.K. Pierce, pastor of Porter Memorial Baptist Church, Lexington, Ky.; and Guy S. Sanders III,

associate pastor of First Baptist Church, Daytona Beach, Fla. Leaders from Tennessee scheduled are: Price, Ray Evette, Brentwood; Don Owens and Bob Spears, Lebanon; and Garry W. Insko, Harry Piland, D. Lewis White, and Helen Young, all of Nashville.

Workers will explore topics such as church support, children and conversion, reaching parents of bus riders, children's worship services, and enlisting, training, and motivating workers.

The conference will begin at 6:45 p.m. on Friday and continue through noon on Saturday. Reservations should be made through the Sunday School dept., TBC.

## Ice storm destroys Shrewsbury building

SHREWSBURY, Mass. [BP]—The walls and roof of unfinished construction of new facilities for First Baptist Church, Shrewsbury, Mass., collapsed during an ice storm according to the pastor, C. Richard Risas.

The Southern Baptist congregation, which was constituted as a church in March 1976, and has 79 members, was expected to move into the new building on Rt. 40 in May 1979. It presently meets in the American Legion Hall in Shrewsbury.





**NEW FACILITIES OPENED**—Radnor Baptist Church in Nashville completed construction on a 2,000-seat sanctuary and Christian family life center recently. The church is located at 3112 Nolensville Rd. in Nashville.

## Radnor opens 2,000-seat sanctuary

Members of Radnor Baptist Church in Nashville worshiped in their new 2,000-seat sanctuary earlier this month and heard Pastor Paul Durham delivered the first sermon in the structure.

At the north end of the facility is a Christian Family Life Center which houses a gymnasium, with facilities for basketball, skating, track, volleyball, handball, tennis, and various table games.

The sanctuary is semi-circled with laminated wood beams and brick with a split

chancel. The peak of the ceiling in the sanctuary is 48 ft. high.

Hymnbooks have been replaced by a hide-away projection screen located at the front of the sanctuary. Hymns are projected on the screen to promote better participation in the music program, according to Durham.

The pulpit, choir arrangement, and baptistry are located in the area near Nolensville Rd. between matching colonial fronts. Entrance into the new facilities may be made from the front of the building or from the rear adjoining the parking area.

## Missionaries vaccinate thousands during measles epidemic in Ghana

NALERIGU, Ghana (BP)—Southern Baptist missionaries and volunteers vaccinated over 16,950 children in the first two weeks of a deadly measles outbreak here recently.

As many as 4,478 injections were given in one day as medical teams went into the village areas surrounding the Baptist Medical Centre in Nalerigu, where the missionaries first reported the outbreak. Mothers carrying children on their backs and leading others by the hand came by the hundreds to receive the immunizations.

Missionaries requested both vaccine and volunteer personnel to help distribute the immunizations. About 80 percent of the beds in the pediatrics ward of the hospital held

measles victims and each night three or four children died.

Frances Greenway, missionary physician, said in her initial appeal for help that even healthy children were not surviving this particular strain of measles. Two nurses and a doctor, volunteers from the United States, joined the missionary staff in fighting the outbreak.

Another team of volunteers may be needed to help distribute the remaining vaccine.

The work of the missionaries and volunteers supplements efforts by the Ghana government in curbing the outbreak. Southern Baptist efforts are confined to the northern area where medical missionaries are stationed.

Despite the careful planning, it was still "a near miracle" that the inoculation effort was accomplished, said John E. Mills, the Southern Baptist Foreign Mission Board's secretary for West Africa. "It was just great the way the people and the medicine got to Ghana and the work got done," he said.

All 10 boxes of medicine arrived with the volunteers, and the medicine was still frozen. The vaccine must remain frozen until time for use. Even a more than five-hour delay enroute didn't prevent the volunteers from making connections. Airline officials held a plane 20 minutes past takeoff time until the volunteers could board for the final leg of their journey.

Money for the immunization project came from Southern Baptist gifts to relief funds. Arrangements for the volunteers and vaccine were made by Harold E. Hurst, associate to the medical consultant for the Southern Baptist Foreign Mission Board.

## Illinois Children's Home to benefit from bequest

DONGOLA, Ill. (BP)—Mrs. Homer M. (Verna) Hinkle has left a bequest of about \$825,000 to be divided equally between the Union County Hospital in Anna, Ill., and the Baptist Children's Home in Carmi, Ill.

Mrs. Hinkle was the former Verna Ausbrook who died Feb. 26, 1978, in Taylorville, Ill., at age 89. Her father was a doctor in the Dongola, Ill., area and her deceased husband owned an insurance firm.

## Brazil devastation depletes foreign board's relief fund

RICHMOND, Va. (BP)—With only \$6,000 in general relief funds, members of the Southern Baptist Foreign Mission Board were unprepared for a plea for \$285,000 to assist flood victims in south Brazil, where more than 400 died, 300,000 were evacuated and 100 Baptist churches were damaged or destroyed.

Requests were granted immediately for \$95,000 from hunger funds to assist 1,300 Baptist families who had to evacuate the area. But two other urgent relief requests left only \$6,391 in the general relief account for the Brazil disaster.

At their February meeting, board members redesignated funds from areas of lesser need. They shifted \$32,303 from relief funds in Niger Republic; \$50,000 from reconstruction funds intended for Romania; and another \$32,142 from a continuing relief project in Recife, Brazil; but still had only \$120,836, less than half the amount requested. The funds originally designated for Romania and Recife are to be replaced as funds are made available.

"There's a tremendous need down there, but our general relief fund is depleted," said Winston Crawley, director of the board's overseas division.

Fred L. Hawkins Jr., Southern Baptist missionary in the flood area, reported by telephone just before the board's administrative meeting that many areas remained under water. He said more than 400 persons had died and some 1,320 Baptist families have been completely uprooted. Crops, and as many as 10,000 dairy cattle, have been destroyed. He estimated that 70 percent of the population will be out of work for months because of the damage.

Devastation in the three south Brazil states—Minas Gerais, Rio de Janeiro and Espirito Santo—covers an area equal to the size of Texas. Thurmon E. Bryant, the board's secretary for eastern South America, called it the area most developed by Baptists in Brazil. He said with 100 churches damaged or destroyed and thousands of Baptist families homeless, the flood will affect Baptist giving across the entire country of Brazil.

"The churches will suffer very badly," Hawkins said. "People down here are already helping themselves as much as they can, (but) we could use the money beginning tonight."

Churches in other parts of Brazil have been gathering clothing, food supplies and money.

## Baptist youth more committed in religious lives, survey says

NASHVILLE, Tenn. (BP)—Results of surveys covering 6,000 Southern Baptist youth show an increasing importance in personal religious commitment among young people, according to a Southern Baptist Theological Seminary professor.

Dan Aleshire, a former researcher and now assistant professor of church and denominational ministry at Southern Seminary, told youth program leaders from three Southern Baptist agencies that youth read their Bibles more and attend more church services.

The surveys, taken in 1971, 1974, and 1977 by the Search Institute in Minneapolis, Minn., show increasing personal religious commitment and decreasing social concern in three successive high school generations. The most recent survey relates to the present high school class.

Aleshire said tabulated scores indicate changing values among youth in such areas as God awareness, religious participation, moral responsibility, Biblical concepts, self regard, national issues, self confidence, personal faults, family unity, parental understanding and classroom relationships.

Changes in scores from 1971 to 1977 indicate significant changes in values, which often reflect changes in values of society at large.

"God awareness"—the extent to which

The Brazilian Baptist State Convention and associational organizations are mobilized and, through churches, are getting relief efforts coordinated, said Bryant. He added that the Brazilian government is also mobilized and is using helicopters and other means to move food and supplies into stricken areas.

In other action, the board granted 18 requests for early release of 1978 Lottie Moon Christmas Offering funds, amounting to \$264,004. Normally, the money from this offering is not distributed until after the books are closed in June, but the needs were considered too urgent to wait. The appropriations were for conference centers, churches, missionary residences, automobiles and mass media equipment. More than \$42,000 of that amount was for a small television unit to be used in evangelistic efforts in Latin America.

More than \$25,000 was appropriated from special evangelism funds for projects throughout the world, including a tent ministry in Chile and two evangelistic marches in Venezuela. In eastern Venezuela, church members in teams of three will cover at least 400 miles in the marches, penetrating the area with person-to-person witnessing and followup.

## Church fire ruins Gallaher auditorium

A week-end fire, which broke out in the auditorium of Gallaher Memorial Baptist Church in Knoxville, destroyed all of the auditorium and caused smoke and water damage to the educational facilities, the office, library, kitchen, and fellowship hall.

The Feb. 3 fire was discovered by the church's custodian at about 10:30 p.m. Mrs. Blake Greer, the pastor's wife, said that the custodian's discovery of the fire probably prevented the loss of the entire facility. Ten fire fighting units were called to combat the blaze. She mentioned that the pews in the auditorium were over 100 years old.

Cause of the fire has not been determined but arson is not suspected, Mrs. Greer said.

The congregation will meet in Bearden high school for the next several weeks and will then decide on another temporary location. Construction on a new facility will begin as soon as insurance payments are made.

## Baptists caution HEW about study

WASHINGTON (BP)—A Baptist agency has cautioned the Department of Health, Education, and Welfare to take into account the principle of church-state separation in conducting a massive research project into the funding of both public and nonpublic schools during the 1980s.

The Baptist Joint Committee on Public Affairs, through executive director James E. Wood Jr., urged HEW's Office of Education officials to take note of the string of U.S. Supreme Court decisions over the past several years outlawing most forms of public aid to nonpublic schools. The statement also urged HEW to seek counsel from outside groups, including the Washington-based Baptist public affairs agency.

The HEW research project grows out of amendments to the Elementary and Secondary Education Act passed last year by Congress.

Office of Education specialists recently completed a first draft of the research plan and asked for interested parties to react to it. A one-day public hearing on the draft was held recently and HEW received formal written statements as well. The research plan must be submitted to Congress by March 1.

At least two sections of the draft research plan indicate that HEW intends to examine the propriety of increased support of nonpublic schools with public dollars, including a study of the feasibility of tuition tax credits or deductions.

youth are aware of God in their lives and believe that he is an ever-present reality—increased from 1971's standard score of 51.4 to 56.3 in 1977.

"Religious participation" registered a jump of nearly six points from 52.6 in 1971 to 58.2 in 1977. That indicates the degree of a youth's involvement in the activities of the institutional church.

"Moral responsibility"—the extent to which a youth becomes involved in life by accepting a God-given sense of responsibility for others—increased from 51.0 to 55.0.

A nearly seven point increase, the largest point change in the study, was shown in the category of "Biblical concepts," the extent to which youth perceive the conceptual uniqueness of Christianity and reject generalized statements of religion. The score in 1971 was 50.9; in 1977, 57.2.

"Self-regard"—the degree to which youth accept themselves as persons of worth and possibility—increased from 50.6 to 53.2.

Continuing problems, in the areas of self confidence, family unity, parental understanding, indicate areas of ministry which rightfully deserve consistent attention, observes Aleshire. These areas represent some of the most difficult needs to which ministry efforts should be addressed, he says.



## Personal perspective

BY TOM MADDEN  
TBC executive secretary

I often think of God's ability to make much out of little and to bless far more than any one has a right to expect. This theme, as developed in the Bible, might be called the economy of God. Following are a few examples plucked out of God's word:

The widow of Zarephath states a truth when she responded to Elijah's request for a cake that she had only oil and meal left for—one last repast and then starvation. But, as she acted in faith, God multiplied the drops of oil and grains of corn into a sufficient supply to feed all three for many days.

When God gave Elisha power to cleanse Naaman of leprosy, his flesh was restored to that, not of an adult, but of a child.

When the lad offered his five loaves and two fishes to Jesus, our Lord multiplied to a quantity sufficient to feed the hungry multitude with enough left to fill twelve baskets.

When Jesus healed Peter's wife's mother of a great fever, her strength was immediately restored.

Not only did the winds obey the command of Christ to be still, but the waters immediately grew calm.

We might need to be reminded that Satan also has an economy. He takes that which is lovely and abundant and decimates it. He began to operate his economy in the garden of Eden, and it is running strong to this very day.

## Lebanon First calls pastor from Virginia

Ray F. Cleek, pastor of Greenbrier Baptist Church in Arlington, Va. for the past five years, has accepted the call as pastor of First Baptist Church in Lebanon. He will be on the field April 1.

Born in Union City, Tenn., Cleek received the B.S. degree from Union University in Jackson, and the master of divinity, master of religious education, and doctor of ministry degrees from Southern Baptist Theological Seminary in Louisville.

Before his service in Virginia, he was associate pastor at Ridgedale Baptist Church in Chattanooga; pastor of the Long Run Baptist Church in Vevay, Indiana; and minister of evangelism at Walnut Street Baptist Church in Louisville, Ky. He also served as chaplain of the Louisville Medical Center.

First Baptist Church in Union City ordained him to the gospel ministry in April 1970.

## Peter Rhea Jones accepts pastorate in Georgia

LOUISVILLE, Ky. (BP)—Tennessee native Peter Rhea Jones has resigned as associate professor of New Testament Interpretation at Southern Baptist Theological Seminary to become pastor of First Baptist Church, Decatur, Ga., effective following the spring semester at Louisville.

A native of Dyersburg, Jones received a bachelor of arts degree from Union University, Jackson, a master of arts degree from the University of Mississippi, Oxford, bachelor of divinity and doctor of theology from Southern seminary, and a master of theology degree from Princeton Theological Seminary, Princeton, N.J. He completed one year of post doctoral work at Cambridge University in England.

Jones is married to Ellen Francis Miles of Dresden, Tenn. Mrs. Jones, also a graduate of Union University, has taught seminary wives in the evening school for several years.



Madden



Agee

## UNIFORM SERIES Lesson for Sunday, February 25

# Unity in Christ

By Bob R. Agee  
dean of religious affairs  
Union University, Jackson

Basic Passages: Ephesians 4:1-16  
Focal Passages: Ephesians 4:1-7, 11-16

There is nothing that hinders or limits the effectiveness of Christian people more than disharmony within the church. A church becomes a diseased body that is not worthy of being called the body of Christ when that body is not characterized by unity. In Paul's circular letter on the nature and mission of the church, he made a plea for them to embody the essentials for unity [4:1-3], reminded Christians of the foundations for unity [4:4-6], pointed out that God had made provision for diversity [4:7, 11-15], and called attention to the source of Christian unity [4:16].

### Essentials for unity [4:1-3]

The Apostle Paul had been God's instrument in establishing the church at Ephesus. He spent more time with them than he did with any other church that he started. He poured his life into them for approximately two years. I was important to him that that church become a shining example of what a church ought to be. They had a mission, a task to perform, and it would not be done unless they were united.

Unity within the church begins with individual church members. When Christians embody certain characteristics, unity is not just possible, it is a natural consequence.

There are five key essentials identified in this passage. [1] Lowliness: The word translated lowliness is the same word that is translated humility. Humility among the members is essential to the unity of the church. When a person is genuinely humble, he has an honest understanding of himself. He also recognizes that he is unworthy of Christ's love, and he yields himself to the Christ who gave Himself for Him. A humble person is one who is consciously acknowledging God's ownership and Lordship over his entire life.

(2) Meekness is not weakness. The word in the Greek language portrays a spirited horse that is broken to the bridle. He has not lost his spirit or his drive, but he is under the control of his master. The Christian is to be broken to the point of being under the control of his master, Jesus Christ.

[3] Longsuffering: Christians are to be pa-

tient with the weaknesses of others. They are admonished to assist and encourage the weaker brethren and not condemn them because of their problems [Rom. 15:1].

[4] Love: There are four words in the Greek language which can be translated love. The word used to refer to God's love for us, our love for God, and our love for one another within the family of God is a word that portrays unselfish, self-giving love that loves in spite of and not just because of. Christians are to be longsuffering because they love the Lord and others more than they love themselves.

[5] Peace: When Christians are at peace with the Lord and within themselves, unity in the church comes naturally. The word for peace focuses on the sense of things being right inside. That sense of rightness becomes a bond that holds things together in Christ.

### Foundations for unity [4:4-6]

God can expect unity within the church because He has laid the right foundations for that unity. Churches need to be reminded of the bases for harmony and oneness within the church.

One body and one Spirit: The church in the New Testament is referred to as the body of Christ. Every local congregation is a visible expression in the world that Christ is alive and at work. Christ is the head and the church is the body. If the body does not obey the head, it becomes paralyzed and helpless.

The word for Spirit in Greek is the word also for breath. Breath is essential for life in the body just as the head is essential for life in the body. The church that draws its life from the Holy Spirit and obeys the thoughts and directions given by the head is a church that is alive, healthy, and united.

From this important foundation stone for unity come several other important stones. Christians share a common hope, a common Lord, a common profession of faith [baptism], and a common faith. Christians are saved by surrendering themselves to the God who is the Father of our Lord, Jesus Christ and by committing themselves to live for Him and serve Him. Without that experience a person cannot be saved. Those who share that experience have a solid foundation for unity.

Provision for diversity [4:7, 11-15]  
Unity does not mean sameness. Christians

are to be united in their commitment, in their love for the Lord, in their mission, and in their ministry through the church. However, there is room for every individual with all of his differences. The Holy Spirit equips every believer with unique and special gifts. Each Christian has a calling to be and to do something for the glory of God. The Holy Spirit doesn't give every person the same gifts, and He doesn't expect every Christian to do the same job.

As an example of the diversity within the fellowship, Paul reminded the Christians in Ephesus of the fact that some were called to be prophets [those who declared God's word to their day], apostles [those sent out to blaze new frontiers for the Gospel], evangelists [those who were called to declare the wonderful news of what God had done through Jesus Christ], and some were called to be pastors (shepherds of the flock of God). Every member of the body is important, and every member's spiritual gift is essential to the proper functioning of the church.

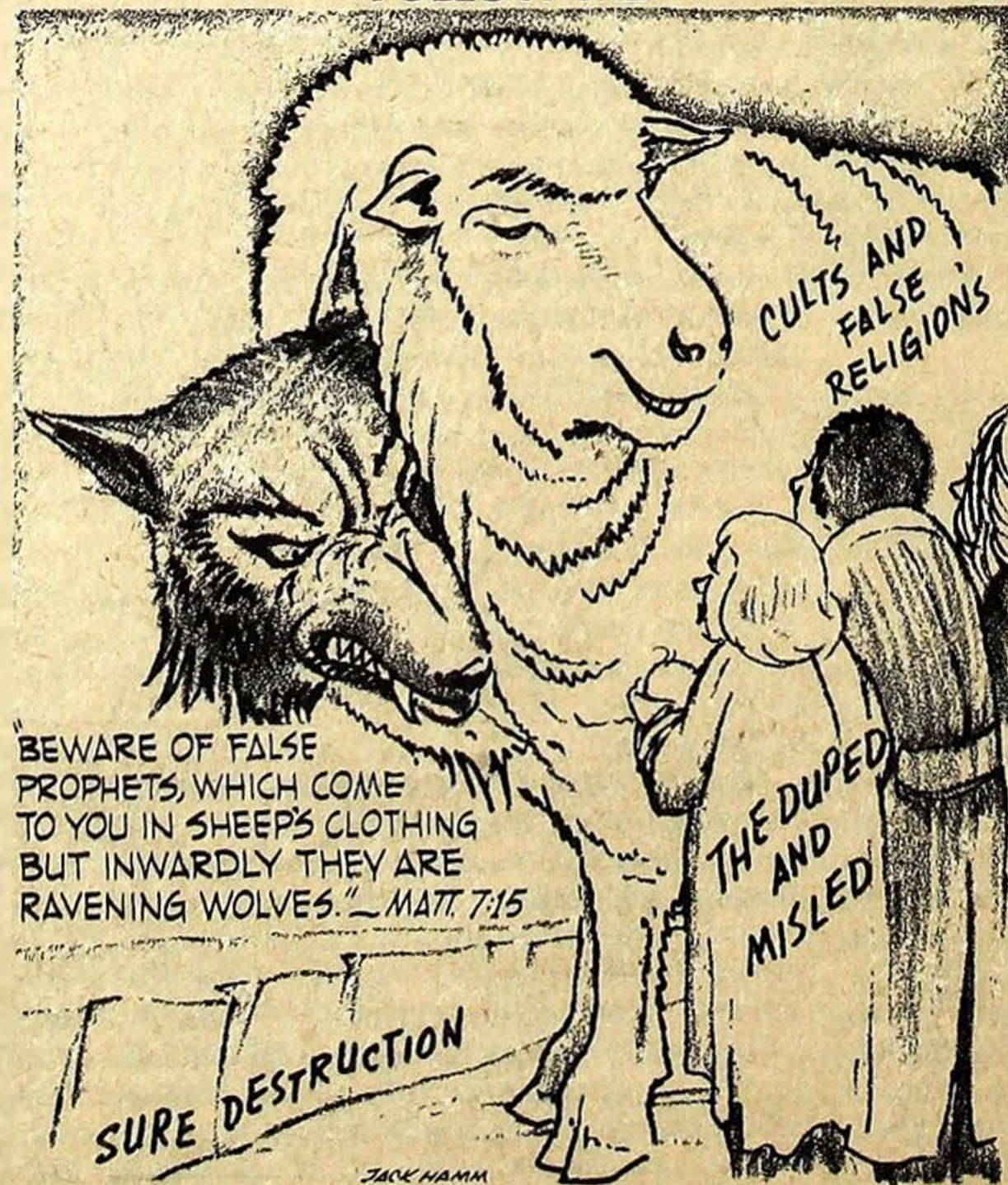
Diversity is necessary for the church (vs. 12-13). Diversity unites in a common goal or mission. The variety of gifts are given to provide for spiritual growth. Christians are not born full-grown. We need to grow up, to keep changing until we can be useful in ministry and effective in allowing Christ to live in us. The application of the different gifts within the church help to encourage and equip the members. Each Christian draws on every other Christian's gifts to help him grow into spiritual adulthood. When Christians are growing up spiritually, unity within the body comes naturally.

### Source of unity [4:16]

Unity within the church ultimately stems from one source. Jesus is the glue that holds the body together. When each member of the body listens to the instructions from the head, each part does what it is supposed to do. Each member fits into the spot where it is supposed to go, functions with the purpose for which it is equipped. When the members are properly related to the head and to one another, the body grows and is continually in the process of building itself up in a spirit of unselfish, self-giving love.

Divided churches will not grow. Disharmony within a church breaks the heart of God and robs the church of the spiritual power that it needs to function properly in the world. Division within a church means that the members of that church are not properly related to the head of the church (Christ). Harmony and unity result from Christ being acknowledged as head of the body, from the body drawing its life from the Spirit, and from the members of the body being willing to be and do what the body of Christ has been called to be and do.

## "FOLLOW ME"



CIRCULATION THIS ISSUE—78,239

## Baptist and Reflector

Established 1835  
Post Office Box 347, Brentwood, Tenn. 37027  
Phone: (615) 373-2255

Alvin C. Shackleford.....Editor  
Eura Lannom.....Assistant to the Editor  
Bobbie Durham.....Editorial Assistant

Published weekly except Christmas week by the Executive Board of the Tennessee Baptist Convention at Brentwood, Tennessee, (Post Office Box 347) 37027. Subscription prices: \$3.75 individual; clubs of ten or more, \$3.40; church budget, five and one half cents weekly when sent to 50 percent or more of church homes. Second class postage paid at Brentwood, Tennessee, and at additional mailing office.

Space forbids printing of resolutions and obituaries. Advertising rates on request.

Member of Baptist Press (BP) news service of the Southern Baptist Convention.

News-Journal of Tennessee Baptist Convention  
Tom Madden, Executive Secretary-Treasurer

BOARD OF DIRECTORS: Gayle Alexander, chairman; Charles D. Earl, vice-chairman; James Austin, Stanley Brumfield, Robert Campbell, E.E. Carrier, Paul Clark, William E. Crook, John Daley, Mrs. Robert Gay, Hayward Highfill, Fred Kendall II, Howard Kolb, Pat Landrum, Paul Shell, Gerald L. Stow, Miss Osta Underwood, and Herschel Woodburn.



## LIFE AND WORK SERIES

Lesson for Sunday, February 25

## Why is doing right a struggle?

By Bob C. Hardison, pastor  
Calvary Baptist Church, Nashville

Basic Passage: Romans 7:1-25

Focal Passage: Romans 7:5-6, 13-25

Do you find it is hard to do what is right? When you know as a Christian that you should be regular in your church attendance or faithful in service, do you find it hard to do so? And what about tithing and outreach? Are you able to do what your convictions tell you that you should do? If you answer in the affirmative, you will be interested in what Paul has to say in the seventh chapter of Romans. The lesson before us will help in the struggle to do what is right.



Hardison

In chapter 7, Paul recognizes that living the new life in Christ is not an easy or simple matter. In so doing, he uses his own life as an example of this struggle. After a word of introduction [vv. 1-4], Paul uses the pronoun "I" to speak autobiographically about his struggle against sin in the flesh. It can be somewhat of an encouragement to us to realize that our present day struggle with sin is nothing new and that even the apostle Paul had similar problems. Praise the Lord that Paul found the victory over the evil in his life. I am also grateful he shared the insights he learned with us to help us in the battle.

## Free From Law [Rom. 7: 5, 7, 13]

The apostle begins verse 5 by describing his pre-Christian state. He uses the phrase "when we were in the flesh" to describe an unbeliever with a fleshly outlook toward life. "The motions of sin" refer to the passions of sins or cravings of the old nature. These passions were under the law. The law showed to man what he was doing wrong but was weak in keeping him from them [v. 7].

Not only was the law helpless to keep a person from sin, it also caused sin. It is only natural to want to do what one is forbidden to do. A mother sometimes coaches a child into eating a vegetable by telling him not to eat it. If the little fellow thinks his mother does not want him to do it, he will gag trying to force it down. So it is with our "fleshly" natures. We want to do the very thing that is forbidden. So instead of the law producing virtue, it was a stimulation to do sinful acts. Thus, the law helps to produce and energize the passions that led to the fruits unto death referred to in 6:23a.

"But now" beginning verse 6 emphasizes the transition from the unredeemed to the redeemed state. The believer is free from the law which held him captive. Christ's death fulfilled the demands of the ritual law, so that in Christ a believer is liberated from the law's demands as a means of salvation.

In verse 13 Paul continues with the thought that God's law was good. The law mentioned here refers to the Ten Commandments referred to in verses 8-11. Paul asks "If the law showed him his sin was not the law bad and wasn't it the cause of 'death in me.' His answer was 'God forbid.' It was not the law that caused his spiritual death but his violation of it. The law was good and holy; it was his violation of it that was 'exceeding sinful.'" While Paul tells us the redeemed is free from the law, he does not stop here. He proceeds to show it is not an easy matter to serve the Lord in the new life.

## Struggle with Sin [Rom. 7:14-23]

In verses 14-25, Paul shares his personal struggle as a Christian against sin. Like so many, he thought that his conversion would end his struggle with sin. But actually he found his struggle greater than before he became a Christian. An unsaved person gives in to his evil desires, but a saved one fights back as he seeks to do right.

Verse 14 is a transitional in which Paul switches from talking about his pre-Christian experience to deal with his life after he became

a Christian. The verb tense "know" is a perfect tense of completeness. From this point on to the end of the chapter, with the exception of one future tense in verse 24, he uses the present tense. It is also of interest that Paul describes himself as "carnal." In I Corinthians 2:14 to 3:1, Paul characterizes people to be in one of three states spiritually: "natural" meaning mature Christians. He described himself as an immature Christian still under sin's pressures.

The apostle begins describing the civil war which rages in his life in verse 15. He says that "the very things I would not 'allow' are the things that I do, and 'what I would' those things I am not doing." He desires to do good and hates sin. He wants to do good, but he does evil; he hates sin, but he keeps on doing it.

In verses 16-23 Paul continues talking about his inner struggle with sin. Paradoxically, Paul owned and disowned his sin. "It is no more I that do it, but sin that dwelleth in me" [v. 17]. His better self abhorred it, but his lower self did it. He bemoaned the fact that in his own power he was fighting a losing battle—"the good that I would I do not: but the evil which I would not, that I do" [v. 19]. His spirit was willing, but his flesh was weak.

Paul's experiences certainly sounds like a typical Christian experience doesn't it? The Christian life is many times an uphill struggle. While we know what is right, we do not do it because of our weakness of the flesh. Paul's experience happens to you and me daily. Now let us look to see how to win the invisible civil war going on inside every Christian.

## Victory in Christ [Rom. 7:24-25]

To live a victorious Christian life on a daily basis, a person must recognize it is not enough to just want to live a good life. To desire to do better is not enough. Paul recognized it. He said, "O wretched man that I am!" [v. 24]. His repeated failure to overcome sin finally led him to see that hope of victory lay not in his self-effort. He asks, "who shall deliver me?" He was looking for a person, not a thing to deliver him.

Paul learned the secret of victorious Christian living. Like a calm after a storm, Paul said, "I thank God through Jesus Christ our Lord." He had found the victory in his struggle against the power of sin. The secret to victory was daily submitting his life to God through Jesus Christ.

The same victorious daily Christian life that the apostle Paul found is open to us, too. To the extent we yield ourselves daily in submission to Jesus Christ as our Lord will be victorious. The battle will continue so long as we are in the flesh. When we fail, it is because we again try to fight the battle in our strength.

## 110-year-old Nevada town welcomes its first church

MOUNTAIN CITY, Nev. (BP)—Efforts by members of the Carlin Baptist Church brought the first church to the 110-year-old town of Mountain City.

The new building, a trailer, was financed by contributions resulting from letters mailed out by LaVern Inzer of Carlin, and was constructed on donated land.

John Ramsey, who works for the Carlin school system, drives 107 miles each way to serve the church without pay. His wife, Merlin, teaches the children at Mountain City and at nearby Wildhorse Chapel, which they also lead.

## FIBER GLASS BAPTISTRIES

Repair Old and Build New

Call 373-0710 or Write

ASHBAUGH FIBER GLASS

P.O. Box 22894, Nashville, Tenn. 37202

## Pulpit To Peter

By Jim N. Griffith

I read somewhere an excellent formula for living the good and successful life.

Here is an outline for living that is well worth remembering: Beginning in childhood, give at least 10 per cent of your gross income to God, also deposit an additional 10 per cent of your gross income in a savings account; and make up your mind to be deliriously happy living on the rest.

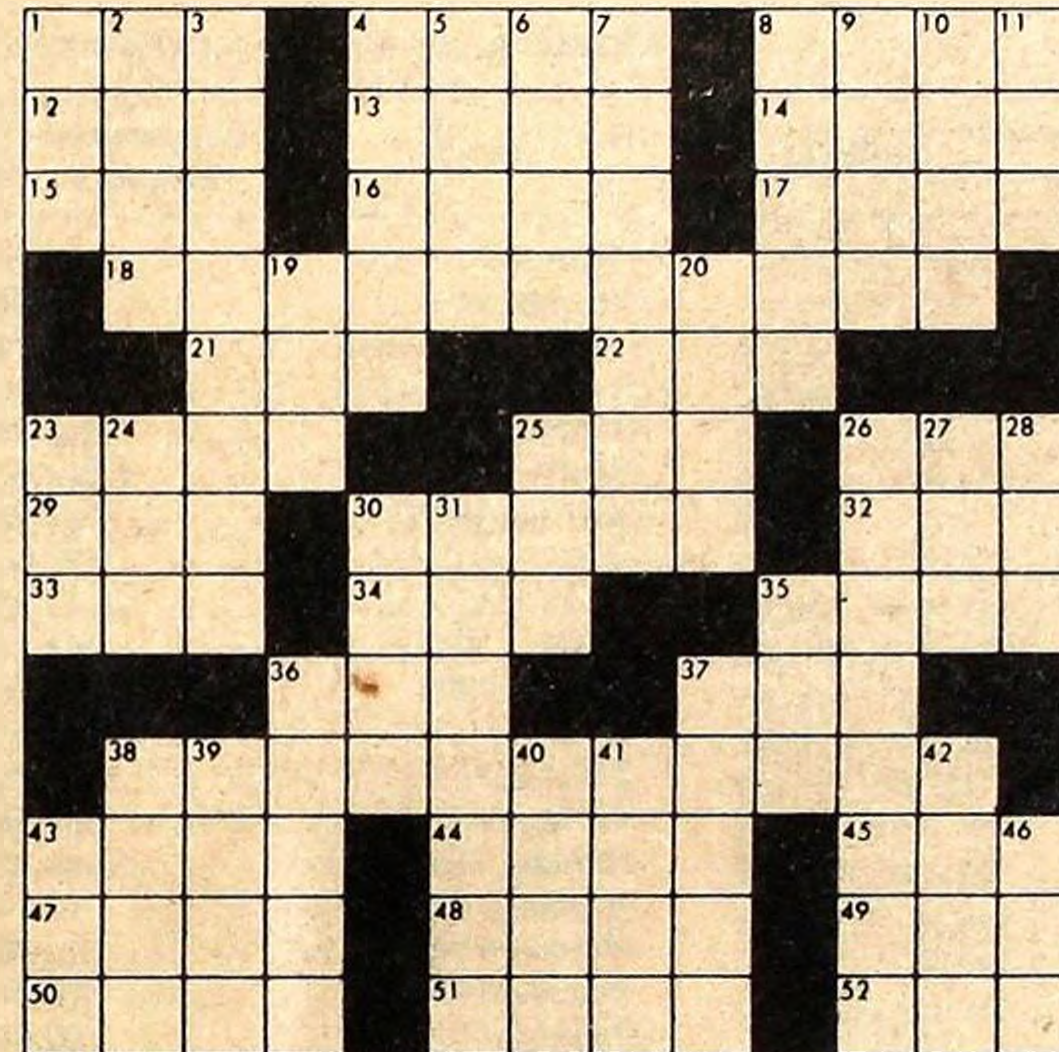
As for your life's work, always make it a practice to do 10 per cent more than those over you ask or have a right to expect of you.

Understand, however, that the formula for handling your income won't work if you get God's money mixed up with yours and start living out of God's pocket.

Incidentally, don't try to keep up with the Joneses. In this day, the only time this is easy to do is when the Joneses declare bankruptcy.

## Bible Puzzle

Answers on page 12

52 Cast it away  
(Matt. 13:48)

## DOWN

- 1 Sleeveless garment
- 2 "and — praises" (Acts 16)
- 3 Lawyer
- 4 Precedes destruction (Prov. 16:18)
- 5 "take thine —" (Luke 12:19)
- 6 Baker's need
- 7 Lubricated again
- 8 Stood against Israel (1 Chron. 21:1)
- 9 Saul spared him (1 Sam. 15:9)
- 10 Frenchman's name
- 11 Question
- 19 Caustic agent
- 20 Intricate network
- 23 "they — shall wax old" (Heb. 1)
- 24 Teachers organization: abbr.
- 25 Tree
- 26 Ancestor of Jesus (Luke 3:33)
- 27 "Thou art my beloved —" (Mark 1)
- 28 Tool
- 30 Audacious
- 31 Place of departure (Num. 33:3)
- 35 Witty saying
- 36 Gladden
- 37 Shut
- 38 Menahem's father (2 Ki. 15:14)
- 39 Over the camels (1 Chron. 27:30)
- 40 The eighth person (2 Pet. 2:5)
- 41 Choir member
- 42 Midianite king (Num. 31:8)
- 43 Ruby, for one
- 46 Marry

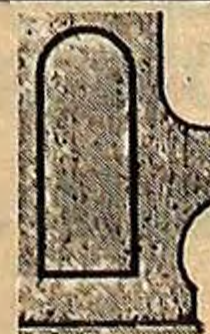
## ACROSS

- 1 Judah's king (1 Ki. 15:9)
- 4 "the top of —" (Num. 23)
- 8 She obeyed Abraham (1 Pet. 3:6)
- 12 Flying mammal
- 13 Storm
- 14 Golden and others
- 15 Insect
- 16 Italian lake
- 17 Kind of car
- 18 "and worship the —" (Dan. 3)
- 21 Cereal grain
- 22 Swedish district
- 23 England's princess
- 25 Egyptian cap
- 26 Tree (Isa. 44:14)
- 29 Sheltered condition
- 30 "prepared as a —" (Rev. 21)
- 32 Barnyard sound
- 33 Ballad
- 34 Rower's need
- 35 Ore deposit
- 36 With oaks and poplars (Hos. 4:13; sing.)
- 37 Pro's partner
- 38 "upon the —" (Rev. 8)
- 43 City (Josh. 18:24)
- 44 Lone
- 45 Moisture
- 47 Revise
- 48 Consumes
- 49 Presidential nickname
- 50 Measure of distance
- 51 Sandal

## CRYPTOVERSE

R J W U Y O G J N O J R I Y W Z X U I J D X U W C Z D O U Y  
Q X

Today's Cryptoverse clue: I equals C

CHURCH FURNITURE  
by LINDSEYDIRECT FROM THE  
FACTORY—PEWS, PULPIT  
TABLES, CHAIRS, FIBRE-  
GLASS BAPTISTRIES AND  
CLASSROOM EQUIPMENT

Lindsey's

PHONE 615-762-2249

BOX 429

LAWRENCEBURG, TENN. 38464

Drexel  
Church Furnishings

Pews, Pulpit and Chancel Furniture

Phone 704/322-8380

Dept. J. P.O. Drawer 2187

Hickory, North Carolina 28601

## Church Pews, Inc.

2250 Hwy 43 N  
Grove Hill, Ala. 36451  
205-275-8564

Complete Line • Solid Wood

National Church Furnishings, Inc.  
1123 Church Street, Suite 408  
Nashville, Tennessee 37203  
Phone (615) 254-0836

STEEPLES

BAPTISTRIES

LIGHTS

CROSSES

FURNITURE

SIGNS



## Treasurer's report for first quarter

	Nov. 1, 1977 Jan. 31, 1978	Nov. 1, 1978 Jan. 31, 1979	Gain
Cooperative Program	2,748,647.07	3,237,931.12	489,284.05
Designated & Reported	2,013,198.77	2,362,055.44	348,856.67
<b>Total</b>	<b>\$4,761,845.84</b>	<b>\$5,599,986.56</b>	<b>\$838,140.72</b>

The above represents a 17.8 per cent increase in Cooperative Program gifts and 17.34 per cent increase in Designated and Reported Gifts.

Lottie Moon Offering \$1,864,238.36 which is \$289,480.06 more than at this same time last year.

First Quarter of last year we had a 13.44 per cent increase in Cooperative Program gifts or \$325,754.76 and 8.78 increase in designations of \$162,478.08.

The first quarter's record of mission giving indicates Bold Mission is on its way among Tennessee Baptists. If this report is a promise of things to come, the future of Baptist missions is bright indeed. Our churches are truly becoming "A People on Bold Missions."

Tom Madden, executive secretary-treasurer

Church	Cooperative Program	Designated
<b>ALPHA</b>		
Centerville, First	595.00	1,562.00
Cross Roads	357.38	50.00
Edgewood	113.00	150.00
Fairfield	278.82	63.18
Garrett	5.00	7.32
Highland	165.19	.00
Hohenwald, First	1,324.86	578.80
Linden, First	252.00	216.45
Lobelville, First	34.93	26.35
Maple Valley	94.92	67.09
New Hope	76.78	.00
Pine Grove	60.76	54.11
Piney	61.88	68.62
Toms Creek	176.15	150.00
Wrigley	252.36	200.00
<b>Total</b>	<b>3,849.03</b>	<b>3,193.92</b>

<b>BEECH RIVER</b>		
Bath Springs	344.84	100.00
Beacon, First	.00	.00
Bear Creek	258.57	428.00
Bible Hill	.00	225.00
Bolens Chapel	.00	.00
Bunches Chapel	.00	.00
Calvary	1,290.11	293.40
Chapel Hill	.00	135.00
Corinth	96.55	125.82
Cub Creek Hall	.00	.00
Darden	.00	250.70
Decaturville, First	150.00	340.00
Flatwoods	.00	175.00
Hinkle	.00	.00
Hopewell	.00	.00
Huron	22.00	.00
Jacks Creek	.00	.00
Judson	.00	.00
Lexington, First	1,000.00	6,543.86
Lone Chestnut	.00	.00
Luray	.00	35.35
Mount Ararat	355.84	73.00
Mount Gilead	362.82	532.00
Mount Zion	.00	64.10
New Beech Grove	.00	.00
New Chapel	.00	.00
New Hope	100.00	150.00
New Prospect	30.55	125.03
Parsons, First	3,608.00	1,836.40
Perryville, First	.00	.00
Pine Grove	236.38	40.00
Piney Creek	.00	.00
Ridge Grove	.00	.00
Rock Hill	.00	230.52
Salem	.00	15.00
Saltillo, First	397.20	15.00
Sand Ridge	433.73	1,100.00
Sardis	193.00	107.00
Sardis Ridge	.00	.00
Scotts Hill, First	409.68	63.90
Southside	.00	.00
Tomlin Chapel	.00	.00
Union	250.00	437.06
Union Grove	150.00	102.10
Wildersville	843.76	538.45
<b>Total</b>	<b>10,533.03</b>	<b>14,081.69</b>

<b>BEULAH</b>		
Alamo	121.62	165.47
Aldridge	86.70	50.00
Bethel	60.00	102.04
Broadway	173.04	.00
Calvary	1,440.05	231.13
Cottonwood	280.91	163.33
Cottonwood Grove	122.52	585.00
Cypress Creek	25.00	50.00

Church	Cooperative Program	Designated
Fairview	100.00	100.00
Hornbeak	130.00	132.00
Johnsons Grove	150.43	50.10
Lakeview	.00	.00
Macedonia	368.54	600.00
Martin, First	4,000.00	7,238.62
McConnell	301.40	277.62
Mooring	30.00	80.00
Mount Moriah	.00	10.00
Mount Olive	571.92	341.97
Mount Pelia	1,130.60	975.00
New Concord	26.00	103.03
New Home	300.00	406.00
New Salem	587.84	13.00
Obion, First	2,137.45	4,325.10
Phillippy	50.00	.00
Pleasant Hill #1	420.00	138.66
Pleasant Hill #2	385.11	639.49
Reelfoot	100.00	.00
Ridgely, First	5,932.68	8,296.07
Samburg	113.98	.00
South Fulton, First	2,408.17	550.80
Tiptonville, First	530.07	1,149.20
Troy, First	1,235.29	1,528.74
Union City, First	9,401.05	3,416.70
Union City, Second	5,008.67	2,116.82
Willingham Memorial	404.89	200.00
Woodland Mills, First	1,738.15	1,424.13
Wynnsburg	.00	440.00
<b>Total</b>	<b>39,872.08</b>	<b>35,950.02</b>

<b>BIG EMORY</b>		
Beech Park	1,247.29	1,331.85
Bethel	60.00	251.70
Big Emory	573.73	.00
Calvary	75.00	519.00

Church	Cooperative Program	Designated
Caney Ford	405.00	645.00
Cardiff	.00	.00
Cedar Grove	3,000.00	.00
Central	680.00	8.00
Childs Memorial	983.17	.00
Clax Gap	150.00	25.00
Clymersville	833.60	227.25
Coal Hill	179.59	50.00
Crab Orchard	694.00	.00
Daysville	156.63	236.00
Deer Lodge, First	.00	76.40
Dyllis	387.32	118.00
Eureka	1,220.70	681.55
Fairview	.00	128.57
Hopewell	.00	.00
Kellytown	439.16	439.16
Kingston, First	9,137.38	4,962.49
Lakeview	272.09	306.61
Lee Village	134.58	258.40
Liberty	1,513.69	1,041.95
Middle Creek	2,614.06	411.22
Mossy Grove	65.50	126.25
Oakdale, First	498.00	168.40
Orchard View	.00	192.26
Petros	1,076.89	1,037.00
Pine Orchard	368.51	350.00
Pine Ridge	297.15	200.00
Piney	1,092.51	978.18
Piney Grove	266.42	57.39
Pleasant Grove	862.00	476.55
Pond Grove	1,019.27	317.99
Riggs Chapel	.00	132.40
Riverside	1,214.30	290.11
Rockwood, First	13,312.04	2.00
Rockwood, Second	.00	25.00
Shiloh	6,021.76	.00
South Harriman	6,789.30	4,046.75
Sunbright First	1,319.53	569.50
Trenton Street	9,397.69	2,167.65
Union	332.00	229.00
Union Chapel	158.66	271.30
Walnut Hill	377.53	217.00
Wartburg, First	200.00	120.00
Whites Creek	412.51	150.50
<b>Total</b>	<b>69,838.56</b>	<b>23,843.38</b>

<b>BIG HATCHIE</b>		
Ashport	155.52	93.29
Beaver	143.00	170.00
Brighton	8,704.74	4,141.22
Charleston	1,883.00	1,774.00
Covington, First	4,000.00	5,348.92
Durhamville	15.00	66.00
Eastland	.00	670.00
Elim	85.00	25.00
Faith	648.00	1,321.04
Fellowship	928.21	907.27
Fulton	89.32	177.65
Garland	781.42	627.51
Gold Dust	.00	.00
Grace	1,081.22	1,857.00
Henning	274.83	663.00
Keelings	.00	.00
Liberty	3,441.30	1,945.47
Mason, First	.00	125.12

Church	Cooperative Program	Designated
Mount Lebanon	284.35	378.72
Munford	981.49	584.75
Oak Grove	2,761.00	2,106.35
Olive Branch	121.01	195.61
Pleasant Grove	1,228.07	897.93
Rialto	.00	.00
Ripley, First	5,880.13	3,934.90
Ripley, First Indian	.00	.00
Salem	.00	330.73
Smyrna	1,889.28	600.00
Trinity	1,061.78	391.62
Walnut Grove	277.32	155.35
Western Valley	371.73	.00
Woodlawn	50.00	630.00
Association	.00	18.50
<b>Total</b>	<b>37,146.72</b>	<b>30,136.95</b>

<b>BLED SOE</b>		
Antioch	37.48	.00
Bledsoe Creek	.00	.00
Cherry Mound	40.00	116.00
Chestnut Grove	69.34	20.00
College Heights	1,534.52	540.08
Corum Hill	40.00	.00
Cottontown	187.50	614.25
Dixon Creek	.00	350.00
Fountain Head	.00	.00
Gallatin, First	12,641.00	10,430.12
Grace	632.21	298.94
Hartsville, First	1,172.59	597.75
Hillsdale	.00	74.14
Immanuel	515.00	75.50
Indian Hills	420.00	.00
La Fayette, First	778.30	1,816.00
Mitchellville	311.41	138.50
New Hope	1,568.42	489.43
Page Heights	427.83	159.00
Pleasant Valley	100.00	106.11
Portland, First	5,252.00	2,378.15
Red Bailings Spgs., First	32.00	.00
Southside	.00	2,735.00
Station Camp	338.64	200.00
Twin Hills	.00	.00
Westmoreland, First	123.29	194.00
<b>Total</b>	<b>26,221.53</b>	<b>21,332.97</b>

<b>BRADLEY COUNTY</b>		
Antioch	605.64	300.10
Beacon	.00	48.60
Bellefonte	934.60	1,299.19
Bethel	410.00	.00
Big Spring	6,971.00	2,370.31
Blue Springs	1,392.89	1,039.50
Brittsville	.00	108.65
Calvary	1,423.33	.00
Candies Creek	427.50	147.14
Center Point	150.00	.00
Charity	.00	.00
Charleston, First	1,000.00	1,933.81
Chestuee	.00	.00
Cleveland, First	9,890.42	17,094.60
Clingan Ridge	429.89	995.26
Cloverleaf	59.41	.00



## Come join us for three days of Bible teaching, preaching and singing.

Union University's Eighth Annual Spring Bible Conference promises to be one of the best ever. In addition to our three guest speakers we will have special music by concert soprano Anne Criswell Jackson of Dallas, Texas.

Join us for these' inspirational sessions around God's Word. This year's theme is "Who Is This Jesus?", We'll be looking for you March 5-7.

## "Who Is This Jesus?"

### March 5-7, 1979

Union University  
Jackson, Tennessee



An Institution of the Tennessee Baptist Convention



Dr. S.M.  
Lockridge



Dr. Huber  
Drumwright



Dr. Wayne  
Ward



Church	Cooperative Program	Designated	Church	Cooperative Program	Designated	Church	Cooperative Program	Designated	Church	Cooperative Program	Designated
Cohulla.....	.00	.00	Royal Blue.....	.00	.00	Caylors Chapel.....	152.44	.00	Laurel Grove.....	101.00	73.00
Corinth.....	396.66	.00	Speedwell Academy.....	.00	150.84	Cedar Grove.....	3,489.74	2,702.80	Longfield.....	491.02	64.49
Council.....	.00	160.00	Victory.....	.00	.00	Centenary.....	263.82	532.04	Main Street.....	752.82	1,965.26
East Cleveland.....	.00	.00	West La Follette.....	456.40	277.32	Central Alcoa.....	426.56	1,763.98	Mineral Springs.....	27.47	.00
East View.....	.00	.00	White Oak.....	.00	.00	Central Point.....	378.59	230.16	Moran.....	81.80	100.00
Elkmont.....	.00	.00	Whitman.....	143.00	200.00	Cold Springs.....	1,242.70	816.09	Mount Pleasant.....	888.25	239.39
Emmanuel.....	.00	.00	Total.....	12,846.30	9,428.68	Dotson Memorial.....	4,257.63	3,251.87	Mountain View.....	.00	.00
Fairview.....	370.95	161.25	CARROLL-BENTON			East Alcoa.....	878.77	733.37	New Haven.....	.00	.00
Four Point.....	185.20	100.00				East Maryville.....	8,529.64	2,144.53	New Home.....	.00	.00
Galilee.....	119.94	.00				East Walland.....	20.69	186.50	New Mountain View.....	473.54	.00
Georgetown.....	960.18	221.51				Ellejoy.....	.00	855.50	New Pilot.....	.00	.00
Goodwill.....	.00	620.00				Everett Hills.....	6,819.58	4,802.69	New Salem.....	161.54	2,802.16
Gum Spring.....	.00	127.10				Forest Hill.....	.00	.00	Norris, First.....	233.00	20.00
Hopewell.....	2,970.16	.00				Four Mile.....	746.00	1,500.00	North Clinton.....	.00	.00
Lebanon.....	.00	341.69				Friendly Hill.....	177.50	50.00	Oak Ridge, First.....	3,818.25	2,736.28
Macedonia.....	522.46	1,009.70				Friendship.....	.00	803.78	Oliver Springs, First.....	2,566.31	865.68
Maple Street.....	476.05	386.01				Friendsville, First.....	2,755.00	1,266.00	Pine Hill.....	.00	463.50
Michigan Avenue.....	1,078.43	310.00				Grandview.....	3,478.74	1,275.41	Pleasant Hill.....	1,187.90	760.00
Mount Carmel.....	946.42	1,500.00				Greenback Memorial.....	1,136.55	1,830.00	Pleasant View.....	234.25	322.14
New Friendship.....	943.32	360.00				Happy Valley.....	165.60	177.12	Poplar Creek.....	734.39	88.24
New Hope Missionary.....	.00	.00				Hillview.....	376.75	474.36	Red Hill.....	.00	120.00
North Cleveland.....	4,062.19	.00				Hopewell.....	207.32	.00	Robertsville.....	5,292.30	613.44
Oak Grove.....	235.63	147.25				Immanuel.....	.00	110.00	Royce.....	938.24	1,052.99
Parkway.....	888.66	76.26				Kagley's Chapel.....	334.80	500.35	South Clinton.....	908.04	1,288.60
Philippi.....	638.55	200.00				Keebles Chapel.....	175.98	.00	Springhill.....	.00	42.03
Ridgeview.....	2.50	.00				Kinzell Springs.....	.00	188.00	Tuppertown.....	20.00	.00
Samples Memorial.....	190.04	379.57				Lake View.....	64.50	.00	Union Valley.....	.00	410.00
Stuart Park.....	835.98	470.13				Laurel Bank.....	710.23	603.47	Valley View.....	116.00	216.00
Tasso.....	100.00	.00				Liberty.....	269.91	73.00	Waldens View.....	.00	.00
Thompson Springs.....	413.00	621.10				Louisville.....	.00	.00	Willow Brook.....	.00	211.16
Union.....	.00	121.34				Macedonia.....	.00	42.00	Wolfe Valley.....	468.86	.00
Valley View.....	1,364.21	381.65				Madison Avenue.....	1,868.50	3,147.45	Woodland Park.....	1,089.00	336.00
Washington Avenue.....	.00	.00				Maple Grove.....	118.32	978.95	Zion.....	2,161.97	1,349.18
Waterville.....	365.00	3,690.02				Maranatha.....	612.20	318.79	Total.....	72,962.84	38,737.59
West Cleveland.....	712.93	518.95				Marble Hill.....	103.21	.00	CONCORD		
Westwood.....	8,829.60	7,080.68				Maryville, First.....	28,418.43	13,450.27	Barfield.....	854.00	285.31
White Oak.....	.00	150.00				Maryville, Second.....	.00	.00	Belle Aire.....	5,577.92	1,969.00
Total.....	51,302.74	44,471.37				Meadowbrook.....	145.80	177.49	Bradleys Creek.....	184.64	100.00
CAMPBELL COUNTY			CENTRAL			Midway.....	.00	145.00	Christiana, First.....	150.00	408.00
Alder Springs.....	54.61	.00	Barren Fork.....	.00	.00	Millers Cove.....	544.75	388.00	Eagleville.....	.00	97.00
Calvary.....	99.67	100.00	Bethel Hill.....	40.00	.00	Monte Vista.....	14,931.09	4,302.02	Fellowship.....	364.89	207.07
Caryville, First.....	1,412.00	197.00	Browns Chapel.....	.00	6.00	Mount Carmel.....	270.00	241.68	Florence.....	415.14	113.75
Cedar Creek.....	.00	.00	Campaign, First.....	168.00	247.00	Mount Lebanon.....	8,390.67	3,875.86	Giles Creek.....	437.39	219.10
Cedar Hill.....	185.10	787.75	Fall City.....	39.96	.00	Mount Zion.....	.00	515.27	Grace.....	375.00	.00
Central.....	.00	.00	Forest Park.....	174.66	175.00	Niles Ferry.....	3,378.83	1,033.71	Green Hill.....	220.13	.00
Clairfield.....	132.00	100.00	Gath.....	594.41	746.42	Oak Street.....	713.98	624.08	Hillview.....	300.00	900.47
Collidge, First.....	259.45	155.00	Hubbards Cove.....	.00	.00	Oak View.....	969.25	2,716.69	Holly Grove.....	197.97	86.91
Demory.....	30.00	110.00	Madison Street.....	240.78	633.70	Old Chilhowee.....	169.35	.00	Immanuel.....	627.00	357.15
Eagan.....	47.97	72.00	McMinnville, First.....	2,754.34	2,960.17	Old Piney Grove.....	780.33	955.15	Lascassas.....	1,064.17	580.84
East Jacksboro.....	.00	223.71	McMinnville, First.....	1,003.10	1,524.62	Pilgrim.....	294.00	795.03	Laverne, First.....	827.25	578.75
East La Follette.....	194.00	293.40	Morrison, First.....	122.10	152.00	Piney Grove.....	1,905.28	856.10	Maney Avenue.....	.00	104.00
Elk Valley, First.....	205.35	.00	Mount Elim.....	1,203.53	687.70	Piney Level.....	425.00	296.05	Midland.....	108.75	.00
Elm Grove.....	.00	.00	Northside.....	1,203.53	687.70	Pleasant Grove.....	3,976.67	2,939.42	Milton.....	310.00	182.00
Glade Springs.....	194.00	155.00	Providence.....	399.69	392.79	Prospect.....	582.53	1,026.00	Miracle.....	1,044.00	500.00
High Street.....	.00	.00	Saint Marys.....	6.00	12.00	Providence.....	739.27	1,182.15	Mount Carmel.....	.00	.00
Hillcrest.....	63.50	.00	Shellsford.....	2,567.57	1,600.05	Rockford.....	715.92	873.46	Mount Hermon.....	954.00	.00
Indian Creek.....	.00	300.00	Welchland.....	101.81	101.00	Rocky Branch.....	694.14	556.73	Mount Pleasant.....	143.81	684.00
Indiana Avenue.....	814.01	.00	Westside.....	222.62	.00	Salem.....	492.45	1,040.00	Mount View.....	1,571.00	512.00
Jacksboro, First.....	2,591.57	1,561.00	Total.....	9,638.57	9,238.45	Seymour, First.....	7,592.27	2,350.47	Murfreesboro, First.....	7,541.66	13,445.01
Jellico, First.....	1,385.09	1,281.25	CHILHOWEE			Six Mile.....	.00	1,027.00	Murfreesboro, Third.....	3,272.65	840.42
La Follette, First.....	4,326.50	3,087.65	Alcoa Way.....	.00	1,039.74	Smoky View.....	174.70	518.00	New Hope.....	129.10	205.00
Lake View.....	45.00	75.00	Alcoa, First.....	7,408.99	9,394.73	Springview.....	691.76	140.33	Nolensville.....	48.00	210.67
Little Cove Creek.....	.00	.00	Allegheny.....	23.81	.00	Stock Creek.....	5,621.20	2,320.80	Patterson.....	96.00	72.00
Macedonia.....	.00	.00	Armona.....	3,154.17	2,622.71	Trinity.....	.00	.00	Powells Chapel.....	1,867.54	464.60
Midway.....	30.00	45.00	Beech Grove.....	1,430.64	.00	Union Grove.....	.00	323.29	Rucker.....	.00	.00
Morley.....	.00	.00	Bethel.....	947.08	1,047.35	Unity.....	1,352.74	1,521.55	Smyrna, First.....	2,586.00	3,798.39
New Liberty.....	.00	.00	Birchfield.....	.00	.00	Village Missionary.....	609.01	.00	Southeast.....	2,095.61	3,828.84
Newcomb.....	174.58	78.76	Broadway.....	11,127.00	3,384.50	West Maryville.....	638.20	588.00	Stones River.....	996.00	399.81
Oak Grove.....	.00	178.00	Cades Cove Memorial.....	1,956.47	1,106.00	Wildwood.....	1,014.66	695.59	Taylors, Chapel.....	.00	.00
Pruden, First.....	.00	.00	Calderwood.....	90.00	85.00	Zion Chapel.....	386.13	320.00	Walter Hill, First.....	50.00	.00
Ridgeview.....	2.50	.00	Calvary.....	1,473.18	.00	Association.....	.00	549.09	Wards Grove.....	706.38	274.51
Round Rock.....	.00	.00	Carson Island.....	.00	.00	Total.....	153,991.02	98,382.52	Wayside.....	.00	.00

75th

Anniversary

March 3-4, 1979

Immanuel Baptist Church

306 Ogle Avenue

Knoxville, TN 37920

Guest speaker March 3, 7:30 P.M.

Stan Rushing

March 4, 10:55 A.M. Homer A Cate

2:30 P.M. Haven C. Lowe

All members, former members, and friends are invited to share in the celebration of 75 years' ministry.

Motto: "Being God's people 1904-1979"

Joe Chandler, pastor

(Adv)

COPPER BASIN		
Bethlehem.....	100.00	.00
Coletown.....	265.16	.00
Grassy Creek.....	.00	24.00
Isabella.....	189.63	143.56
Maple Grove.....	.00	.00
Mine City.....	3,362.94	1,215.00
Mount Vernon.....	.00	.00
Mount Zion.....	222.78	266.00
New Zion.....	75.00	200.00
Pleasant Hill.....	.00	83.00
Turtletown.....	432.00	685.00
Zion Hill.....	420.61	556.00
Total.....	5,068.12	3,172.56
CROCKETT COUNTY		
Alamo, First.....	3,500.00	3,214.45
Barkers Chapel.....	.00	42.89
Bells, First.....	2,199.64	3,703.93
Cairo.....	.00	20.00
Cross Roads.....	1,077.68	1,010.00
Friendship.....	1,291.00	817.59
Gadsden.....	985.00	1,227.25
Johnson Grove.....	200.00	89.35
Maury City, First.....	868.51	3,337.00
Midway.....	.00	.00

(Continued on page 10)



# "A different tune" spreads gospel

FORT WORTH—When "Powerline" hit the air waves in 1969 the host was playing "Everyday People" and telling teenagers they are very special people to God. Today the host plays a different tune but he still spreads the Christian message to millions of young people.

The half-hour radio program, produced by the Southern Baptist Radio and Television Commission in Fort Worth, celebrates its 10th anniversary this month. What started out as a dramatic change to religious programming is now the world's largest syndicated program. It's aired by more than 1,000 stations around the world.

"Our goal was to develop a program for teenagers that would fit in with their lifestyle, yet provide a Christian influence," said Claude Cox, commission marketing director and the show's writer. Kirk Teegarden, of the commission staff, produces the program.

"In doing research for 'Powerline' I discovered that if we were to reach young people we would have to go where they were—and that was to rock music," said Cox.

## Songs used as springboard

"I noticed that many of the songs on the hit charts could be used as a springboard for comments on Christianity by a Christian announcer.

"We had to develop a program that station managers would accept. If we didn't get it past them then all our efforts would be in vain."

## HISTORICALLY FROM THE FILES

### 50 YEARS AGO

G.M. Savage, professor at Union University, Jackson, was honored with a surprise party on his 80th birthday. A program had been arranged with H.L. Winburn of Arkadelphia, Ark., and Henry Alfred Porter of St. Louis, as speakers.

T.E. Baber was the new pastor of Central Baptist Church, Martin, coming from Russell, Ky. The church was in the process of completing a new building program at a cost of \$70,000. It would be the largest auditorium in Martin when completed.

### 25 YEARS AGO

First Baptist Church, Loudon, held a note burning service celebrating payment of indebtedness incurred in the recent building program which included a three story educational plant, enlarged auditorium, and other improvements at a cost of \$54,000. W. Paul Hall was pastor.

Magness Memorial Baptist Church, McMinnville, voted to begin a fund raising campaign for construction of a three story young people's building at a cost of \$40,000. H. Curtis Erwin was pastor.

### 10 YEARS AGO

Woodland Baptist Church, Jackson, called J. Norman Ellis as pastor. He came to Tennessee from a 12½ year pastorate at Cadiz Baptist Church, Cadiz, Ky.

North Johnson City Baptist Church, Johnson City, called Wiley I. Rutledge as pastor. Rutledge, a native of Nashville, has served as pastor of West Albermarle Baptist Church, Albermarle, N.C.

The early "Powerline" programs were quite different from today's shows because the audience has changed, said Cox. "Ten years ago the kids were rebellious and really into the drug culture. Many were runaways and they were asking a lot of questions about sex and interpersonal relationships.

"Religion was a bad word in the late sixties, so we had to slip any mention of Jesus in by the back door so to speak. We would tell them about the Christian life before they could turn us off. It was very subtle."

Cox said today's young people are more sophisticated than those of 10 years ago. "They're interested in things like ecology, government, and health and we've had to adapt 'Powerline' to meet those needs. When the program started they (teenagers) were interested in today. Now they're interested in tomorrow. They're also more open to ideas on Christianity."

Paul M. Stevens, commission president, originated the idea for the program and named it.

## Dramatic change introduced

"I think broadcasters were surprised when we introduced the show because it was such a dramatic change from traditional Baptist approaches to evangelism," said Cox.

"But they seemed to like it. Contemporary music stations find few programs of this nature that are so near to their own format. 'Powerline' helps stations meet their public service obligations to their communities.

"We are not trying to sell denominationalism, organized churches, or an institution," said Cox. "We are talking about God in a straight-forward manner."

"Powerline's" format includes songs selected from the top three hit charts bridged with comments by a professional disc jockey. Problem letters from listeners and solutions are read on the air. The identity is never revealed.

Listeners are encouraged to write for help with their problems and a trained counselor answers each letter personally.

"Many of these kids don't have anywhere to turn for help except to 'Powerline'," said J.P. Allen, head of the commission's counseling department.

Letters received describe problems ranging from parental pressure to religion.

## Nearly 77,000 respond

"In 1978, 76,984 young people wrote in as a result of hearing 'Powerline,'" said Allen. "More than 11,000 of these requested personal counseling."

The need for a fully-staffed counseling department stemmed from a series done on sex and dating.

Several early programs featured two-minute vignettes on various areas of sexuality. Apparently that hit a nerve, and the letters began to pour in.

As a stimulus to keep letters coming, Cox began to make available free offers on the air. These have included posters, iron-on transfers, and book covers. Last year almost 66,000 teenagers wrote in to request the free gifts.

"Because of the show's format there hadn't been too much opportunity to present the plan of salvation, but if the kids write in for a free gift we can include a salvation brochure in with the offer," said Cox.

Since the inception of "Powerline," the tone of the program has changed with the times, said Kirk Teegarden.

"We strive for the finest quality in programming through constant evaluations and equipment upgrading. We've got to be as good or better than the best in the business (broadcasting)."

Teegarden, who carefully selects all music for the program said, "Young people will hear many of their favorite hits on 'Powerline' but some songs are never played on the show because they are inconsistent with the Christian way of life.

"At any given time, out of the top 10 records

in the nation I can only play about half on the air."

## Performers' lives considered

In addition to looking at the song's lyrics,

Teegarden also considers the lives of the performers.

"If somebody has openly disagreed with things the Bible says, then we don't want to play their music."

"Powerline's" host is professional disc jockey, Jon Rivers. Rivers is the morning man on Fort Worth's KFJZ-FM, but he's "Brother Jon" to millions of "Powerline" listeners.

"Powerline" is now the world's largest syndicated program in the world, but that fact hasn't kept Southern Baptists from striving to reach more stations.

"The more stations we have, the more kids hear about Christ and the more lives can be given new directions," said Cox.

## On Matters of

# Family Living

By B. David Edens

Director, Marriage and Family Program  
Stephens College, Columbia, MO 65201

## Parents less apt to abort than nature, study shows

Nature makes the decision to abort an impressive percentage of fetuses that would be born with extensive deformities, the New York State Birth Defect Institute reports. In contrast, a surprising percentage of parents choose not to terminate pregnancies even when a complex testing procedure, amniocentesis, reveals the likelihood that the baby will be born with severe retardation.

As many as 4% of families informed that their expected infant may be profoundly retarded—with almost no effective intelligence—still decide to have the child, says Dr. Ernest B. Hook, director of the Institute study. When tests predict the possibility of less acute sex chromosome damage, approximately 80% of parents go ahead with the pregnancy, data collected from the nation's specialized medical centers reveal.

The good news is that in the majority of cases, amniocentesis, which analyzes the amniotic fluid surrounding the fetus, shows that the fetus is developing normally.

## More workers needed

# Baptists answer service corp plea

RICHMOND, Va. [BP]—Southern Baptists committed about \$60,000 to support Mission Service Corps volunteers overseas in late January and early February after a plea for immediate financing came from the Foreign Mission Board's coordinator of the corps.

These commitments by eight Southern Baptist individuals or groups, plus seven inquiries about supporting a volunteer, came in response to Lewis Myers' earlier announcement that immediate financing was needed for 27 Mission Service Corps volunteers.

Based on this initial response, Myers expressed confidence that financing for all 27 will be arranged during the next two to three months. It costs an average of \$7,500 a year to support a single volunteer and \$12,500 to support a couple overseas.

The appeal for additional financing came after the January meeting of the Foreign Mission Board. Eight new Mission Service Corps workers were approved at that time, and Myers said four more awaited financing. Another 23 were nearing approval but also lacked support.

## Devotional

# Obedying God's word brings joy, peace

By Linda S. Johnson

A well-known advertisement today encourages, "You've got to grab for all the gusto you can get!" "Grabbing" suggests people desperately snatching at something about to slip through their fingers. The rush of our daily lives leaves little time for sheer enjoyment of living, but the worldly "grabbing for the gusto" does not provide pleasure that is lasting.

Isaiah 55:2 asks why labor for "that which satisfieth not?" The indication is plain: it is God alone who satisfies the human heart, and not temporal pleasures. True joy is an attitude of life, brought about by the mercy and grace of God towards repentant sinners. A man who turns from sin to Christ will find mercy, "for He will abundantly pardon" (Isaiah 55:7). The grace of God is beyond our understanding, but it is as sure as the falling rain causes the earth to flower. As the earth provides for those who live upon it, so shall God's word always accomplish what He intends. When God's word is obeyed, the bonds of sin are broken, and man is free to live in joy and peace.

Acts 14 illustrates this thought by recounting an incident between Paul, Barnabas, and a pagan audience in Lystra, a city in Lycaonia, present-day Turkey. After Paul healed a cripple, the people thought he and Barnabas were gods, and they prepared to offer a sacrifice. The apostles prevented this and delivered a simple sermon that men need to turn from earthly vanities to the living God who made all things. God has always let men make their own choices, but He left a witness to Himself in giving us "rain from heaven, and fruitful seasons, filling our hearts with food and gladness" (Acts 14:17).

Men who choose to live without God still benefit from God's goodness, but the gladness of heart and eternal life comes with acknowledging Christ as Saviour and Lord. Without Christ, men can "grab for all the gusto they can get" and never find true happiness, but Jesus said, "I am come that they might have life, and that they might have it more abundantly" (John 10:10).

Mrs. Johnson is secretary at First Baptist Church, Elizabethton.





★ ★ ★ ★ ★ ★ ★ ★ ★ ★ ★ ★ ★ ★ ★ ★ ★

*Citizen's Corner*

By Jerry M. Self  
Public affairs and Christian life consultant

**Steve Bain** was called as interim pastor of Olive Hill Baptist Church, Olive Hill. Bain is from Savannah.

Three Memphis pastors, W. Wayne Allen, Bobby Moore, and Adrian Rogers, were participants in a three-day conference in San Bernardino, Calif., hosted by Campus Crusade for Christ and the Trinity Baptist Church of San Antonio, Tex. Allen is pastor of East Park Baptist Church. Rogers leads the Bellevue congregation, and Moore serves as pastor of Broadway Baptist Church. William Bright, president of Campus Crusade, said that the purpose of the meeting was to provide an opportunity for pastors from throughout the nation to talk together about the most effective ways of fulfilling the Great Commission.

**Henry Woody** resigned as pastor of First Baptist Church in Louisville and is now available for pastorate, supply, or evangelistic work.

Two staff changes were reported recently from First Baptist Church in Kingston. Tom Willoughby resigned as minister of music to accept the call to First Baptist Church in El Paso, Tex., where he will serve in a similar capacity. His resignation is effective Apr. 15. Rick Ellison accepted the call of the Kingston church to serve as minister of education. He joins the church staff this month. Gary Marsh is pastor.

**James Gallery** has joined the staff of Woodmont Baptist Church as minister of youth and single adults. **Bill Sherman** is pastor of the church.

## Funeral rites held for Clarence Smith

Clarence Smith, pastor of Cherokee Mountain Baptist Church in Jonesboro died unexpectedly last month in Johnson City.

He had been pastor at Cherokee Mountain since April 1977. Prior to that time he was pastor of Walker's Fork Baptist Church in Kingsport, Fall Branch Baptist Church in Fall Branch, Gethsemane Baptist Church in Johnson City, and Cranberry (N.C.) Baptist Church.

Funeral services were conducted at New Victory Baptist Church in Jonesboro with Jack Coggins officiating. Burial was in New Victory Cemetery.

In addition to his wife, Eva Nell Smith of Jonesboro, Smith is survived by four daughters; four sons; his mother, Mrs. Pauline Gribble; and 11 grandchildren.

## Hesters escape injury as pastorium burns

Glenn Hester, pastor of Gracey Avenue Baptist Church in Clarksville, and his family escaped with no injuries after a grease fire broke out in the kitchen of their home recently. A spokesman at the church said that the blaze spread quickly, destroying the entire inside of the house and all of the furnishings, except for a few pieces in the bedroom.

It will take at least three to five months to rebuild the home, and damage has been estimated at over \$35,000.

## LEADERSHIP...

Eastwood Baptist Church of Ooltewah called Larry Webb as full-time youth and recreation director. Webb is already on the field. Ray Walker is pastor.

**Johnnie Hall**, church training director, Tennessee Baptist Convention, is serving as interim pastor of Central Baptist Church in Hixson.

North Cleveland Baptist Church,  
Cleveland, called R.T. Roberts as interim  
pastor.

**Warren Johnson, Bethel View Baptist Church, Bristol, resigned recently.**

Niles Kitzmiller was called as interim pastor of Riverbend Baptist Church in Bristol.

## CHURCH FURNITURE

At a price  
**Any Church Can Afford**  
Write or call

**WAGONER BROS.**  
**MFG. CO.**  
Tel. (501) 675-2468  
**Booneville, Arkansas**  
**72927**

**FIBERGLASS**

**STEEPLES  
AND  
BAPTISTRIES**

**STEEPLES  
AND  
BAPTISTRIE**



**THE  
Fiberglas Shop**

**CUSTOM  
MADE  
PRODUCTS  
INC.**

**Box 133 Phone 278-7060  
Dalton, Ga. 30720**

**Write or Call For Free Color Brochure**

A bill to raise the drinking age from 18 to 21 is now before both houses of the Tennessee General Assembly. Major arguments in favor of the bill boil down to two. Raising the age will help law enforcement officers in dealing with high school abuse of alcohol; and having alcohol less accessible to teen-agers will remove some of the pressure of an adult decision about drinking from our young people.



Self

The history of the bill illustrates some Capitol Hill confusion. The House version has been assigned to their government operations committee. This committee will take action on the bill, either recommending it for passage or not. The members are Bob Davis, Alvin King, W.A. Richardson, Joe Bell, John Chiles, Stephen Cobb, David Copeland, Eugene Davidson, Elmer Disspayne, Emmitt Ford, Clifford Henry, Michael Kernell, U.A. Moore, and M.F. Stafford.

The confusing twist occurred when a special juvenile corrections committee held a public hearing last Friday on the bill. The significance of that hearing lies in the airing of opinions on the issue. However, the committee which conducted the hearing is not the one which will control the destiny of the bill.

The senate bill was assigned to the state and local government committee. Members of that committee were listed in this column last week.

**Your witness is still needed on the critical question of availability of alcohol to teenagers. Write members of the Senate's state and local government committee or the house government operations committee. The Senate bill is titled SB200 and the House version is HB371.**

**PLAN NOW!!! for . . . Church Construction**  
**CHRISTIAN BUILDERS, INC.** Write for  
P.O. Box 571, Brentwood, TN 37027 **FREE**  
**CONSTRUCTION MANAGEMENT** Brochure  
**FINANCIAL CONSULTATION**  
**SPECIALIZED ARCHITECTURAL**  
**PLANNING** Phone (615) 373-3084

**To change or correct  
your address**

Attach in this space your address label found on the front page of your latest copy of the BAPTIST AND REFLECTOR. Please give your new address below—including your zip code. When changing address, please give two weeks notice. Please write, do not call address changes to insure accuracy.

**All correspondence relating  
to your subscription**

should be accompanied by our address label. If you are receiving duplicate copies, please send both labels.

**Address all requests to:**

**BAPTIST AND REFLECTOR**  
Post Office Box 347  
Brentwood, Tennessee 37027

Name \_\_\_\_\_ Please Print

Address \_\_\_\_\_

City \_\_\_\_\_

State \_\_\_\_\_ Zip Code \_\_\_\_\_



Church	Cooperative Program	Designated
(Continued from page 7)		
Providence	.00	289.46
South Fork	142.85	280.00
Three Way	.00	250.00
Walnut Hill	300.00	1,009.50
Total	10,564.68	15,291.42

**CUMBERLAND**

Alva	.00	37.00
Blooming Grove	659.00	297.00
Canaan, First	189.00	319.25
Charlotte, First	341.79	30.00
Clarksville, First	4,130.00	6,991.26
Cross Creek	.00	.00
Crossland Avenue	319.75	170.89
Cumberland City, First	167.00	61.00
Cumberland Drive	1,544.14	296.62
Dotsonville	126.00	.00
Erin	630.00	971.00
Excell	506.00	383.43
Grace Avenue	458.00	971.57
Gum Springs	485.16	.00
Harmony	.00	.00
Hillcrest	774.44	324.57
Hilldale	1,599.93	.00
Immanuel	100.28	.00
Kenwood	703.64	334.91
Kirkwood	578.52	204.25
Little Hope	1,367.71	386.00
Little West Fork	600.00	771.37
Memorial	260.87	851.60
Mount Herman	735.73	568.96
New Canaan	.00	.00
New Providence	1,956.12	625.26
Northside	.00	.00
Parkview	1,148.94	570.75
Pleasant View	1,786.24	1,475.79
St. Bethlehem, First	250.00	222.91
Slayden	204.83	100.00
Spring Creek	386.00	25.00
Trinity	123.87	231.25
Vanleer	135.44	28.78
Woodlawn	488.79	214.00
Total	22,757.19	17,464.42

**CUMBERLAND GAP**

Atlantus Hill	156.88	.00
Bethel	.00	.00
Big Spring Union	.00	20.00
Blairs Creek	.00	.00
Brooks Memorial	.00	.00
Calvary	.00	.00
Carrs Chapel	.00	423.68
Cave Spring Missionary	.00	.00
Cedar Fork	.00	132.00
Cedar Grove	.00	.00
Chadwell Station	93.91	110.83
Cumberland Gap, First	100.00	269.05
Duncan Chapel	.00	126.10
East Hopewell	.00	607.00
Fair View	79.63	56.30
Forge Ridge	.00	75.00
Gap Creek	.00	538.08
Gibson Station	.00	.00
Golns Chapel	.00	100.00
Greers Chapel	.00	25.00
Harrogate, First	1,158.98	130.00
Haynes Flat	.00	358.18
Head of Barren	.00	.00
Hope Missionary	.00	.00
Hopewell	.00	.00
Howards Quarter	.00	.00
Indian Creek	.00	.00
Liberty Missionary	.00	.00
Liberty Hill	56.00	.00
Little Mulberry	106.25	181.02
Little Valley	.00	.00
Lone Hill Missionary	.00	.00
Lone Holly	.00	.00
M C M	.00	.00
Midway Missionary	171.05	200.00
Mount Gilead	.00	.00
Mount Pleasant	.00	.00
Mount Zion	.00	.00
Mountain View	.00	.00
New Hope	.00	.00
New Salem	.00	141.10
New Tazewell, First	1,691.05	710.31
Oak Grove	.00	100.00
Peoples Missionary	.00	.00
Pleasant View	448.33	20.00
Poplar Grove	.00	.00
Providence	.00	20.00
Pump Hollow	.00	.00
Pump Springs	1,344.11	793.75
Raven Hill	.00	.00
Red Hill	.00	.00
Riley Memorial	.00	.00
Riverside	.00	.00
River View	.00	78.00
Shawnee	411.39	805.00
Springdale	.00	56.30
Springfield Missionary	.00	.00
Straight Creek	.00	.00
Sugar Grove	.00	.00
Summeys Bridge	.00	.00

Church	Cooperative Program	Designated
Sunrise Missionary	.00	.00
Tazewell	278.26	207.00
Town Creek	.00	100.00
Underwood Grove	480.00	338.31
Union Chapel	.00	100.00
Walnut Hill	.00	300.00
Westside Missionary	.00	.00
Wolfenbarger Chapel	.00	.00
Association	.00	50.00
Total	6,575.84	7,172.01

**CUMBERLAND PLATEAU**

Bethlehem	717.09	225.50
Calvary	30.00	.00
Clear Creek	86.99	38.30
Crossville, First	2,829.05	4,909.12
Cumberland Homestead	2,017.05	1,587.73
Emmanuel	160.00	384.00
Fairfield Glade	308.32	.00
Fairview	.00	.00
Fredonia	738.49	210.00
Haleys Grove	573.06	325.00
Isolene	139.07	86.33
Mayland	254.49	.00
Memorial	116.34	174.51
Meridian	15.00	.00
Mountain View	245.63	111.25
Mount Zion	.00	.00
Oak Hill	463.86	100.00
Oaklawn	291.21	83.00
Ozone	65.00	44.00
Plateau	86.16	.00
Pomona	60.00	.00
Slate Spring	17.00	12.00
Vandaver	.00	.00
Westel	200.47	570.00
Total	9,414.28	8,860.74

**DUCK RIVER**

Air View	.00	.00
Altamont	.00	.00
Broadview	760.23	462.20
Center Grove	507.99	.00
College Street	175.57	60.00
Cowan, First	807.40	1,404.45
Cross Roads	863.53	130.00
Decherd, First	692.91	1,043.42
Estill Springs	1,526.66	623.65
Grace	518.33	646.75
Highland	1,353.09	1,472.32
Hillsboro	261.33	290.26
Huntland	577.28	.00
Keith Springs	32.90	.00
Liberty	592.65	25.00
Lincoln Heights	416.06	.00
Little Mountain	.00	.00
Manchester, First	4,807.53	3,187.69
Maxwell	305.59	400.92
Midway	213.27	.00
Monteagle, First	83.28	77.00
Oaklawn	454.98	600.23
Paynes	.00	.00
Prairie Plains	53.76	128.40
Riva Lake	401.65	50.00
Rutledge Falls	975.00	725.00
Southside	123.76	457.09
Spring Creek	359.01	201.69
Summitville	108.84	130.80
Tracy City, First	1,530.00	.00
Trinity	1,723.83	2,330.00
Tullahoma, First	7,705.56	55.00
Victory	36.90	113.57
Westwood	137.00	183.48
Winchester, First	3,066.35	2,372.48
Total	31,172.24	17,171.40

**DYER**

Beech Grove	.00	62.00
Bogota	.00	.00
Calvary Chapel	.00	.00
Calvary Hill	738.00	73.75
Curve	1,282.14	1,416.00
Dyersburg, First	8,249.98	10,742.27
Dyersburg, Second	300.00	225.00
Elon	.00	.00
Emmaus	50.00	50.00
Enon	476.21	101.99
Fairview	75.00	47.01
Finley	100.00	481.96
Fort Hudson	60.00	359.00
Fowlkes	852.62	22.20
Gates	326.19	237.68
Halls, First	2,500.00	7,424.99
Halls Westside	300.00	306.00
Harmony	347.16	325.00
Hawthorne	883.25	682.95
Hillcrest	3,824.32	2,246.12
Lenox	500.00	26.31
Macedonia	1,295.00	1,000.00
Marys Chapel	179.18	500.00
McCulloughs Chapel	45.00	121.05
Miston	25.00	25.00
Mount Tirzah	1,467.70	711.25
Mount Vernon	445.36	136.61

Church	Cooperative Program	Designated
New Mitchell Grove	30.00	10.00
Newbern First	1,942.08	3,014.13
Parrish Chapel	170.00	47.47
Ro Ellen	100.00	215.30
Southside	2,309.70	2,347.78
Springhill	700.00	1,256.00
Trimble	2,424.75	3.25
West Side	.00	80.00
Williams Chapel	45.00	105.00
Woodville	360.07	35.00
Zion Hill	.00	.00
Total	32,403.71	34,438.07

**EAST TENNESSEE**

Baysinger Chapel	.00	.00
Bear Creek	9.89	.00
Bethel	.00	.00
Browns Missionary	.00	.00
Burnetts Chapel	.00	.00
Calvary	63.66	22.82
Cave Hill	247.40	513.27
Centerview	.00	.00
Clay Creek	.00	.00
Deep Gap	117.00	85.50
Del Rio	.00	.00
Denton	393.55	59.25
Dutch Bottom	.00	75.00
English Creek	689.04	647.08
Forest Hill	112.50	128.00
French Broad	.00	.00
Garvers Chapel	83.89	13.00
Holders Grove	249.07	58.35
Liberty Hill	.00	.00
Lincoln Avenue	2,056.37	2,103.14
Mannings Chapel	286.00	.00
Maple Grove	.00	85.00
Mount Zion	110.99	.00
New Prospect	20.00	.00
Newport, First	2,565.77	3,608.76
Northport	1,487.32	618.39
Pigeon Valley	405.37	1,500.00
Pine Springs	.00	25.00
Piney Grove	20.50	.00
Pleasant Grove	476.63	1,311.86
Point Pleasant	185.76	380.39
Rays Chapel	60.00	56.00
Saint Tide	.00	.00
Shady Grove	287.37	600.00
Swansylvania	.00	301.30
Union	301.06	316.93
Webb	302.00	216.00
West End	.00	.00
Wilsonville	303.18	300.00
Association	.00	50.00
Total	10,834.32	13,075.04

**FAYETTE**

Braden	25.20	.00
Feathers Chapel	.00	.00
Forty-Five	90.00	.00
Galloway	520.13	292.50
Hickory Grove	502.75	315.00
Hickory Withe, First	691.79	716.55
Kirk	75.00	470.00
Liberty	.00	.00
Morris Memorial	378.00	3,170.84
Mount Moriah	298.50	84.00
Mount Olive	.00	17.50
Oak Grove	.00	.00
Oakland	490.00	313.97
Rossville	1,700.25	243.75
Shady Grove	50.00	25.00
Somerville, First	5,145.93	2,168.61
Williston	377.90	.00
Total	10,345.45	7,817.72

**GIBSON COUNTY**

Antioch	2,759.75	2,562.67
Avondale	797.98	189.55
Beech Grove	316.74	126.50

Church	Cooperative Program	Designated
Bethel, Humboldt	75.00	126.50
Bethel, Yorkville	455.86	240.15
Bethpage	860.70	715.29
Bradford, First	1,705.00	1,322.00
Calvary, Humboldt	.00	159.12
Calvary, Rutherford	184.74	100.00
Center	60.00	50.00
Chapel Hill	524.42	124.00
China Grove	340.00	1,240.00
Clear Creek	299.02	52.82
Dyer, First	5,089.39	5,341.83
Eldad	240.00	152.32
Emmanuel, Humboldt	1,597.66	1,353.11
Fellowship	248.12	234.62
Fruitland	351.00	289.00
Gibson	255.57	1,134.00
Hickory Grove	680.90	515.25
Humboldt, First	5,845.76	6,086.53
Idlewild	657.00	285.50
Immanuel, Trenton	.00	.00
Keely Mill	232.01	.00
Kenton, First	2,625.00	2,931.35
Laneview, Kenton	241.30	75.00
Laneview, Trenton	77.69	40.00
Latham Chapel	300.00	626.75
Lavinia	396.75	392.59
Maranatha	114.75	.00
Medina	4,246.19	1,423.21
Midway	320.90	164.68
Milan, First	11,487.69	6,570.78
Mount Pisgah	312.53	131.42
Mount Pleasant	855.49	1,425.47
New Bethlehem	1,611.94	802.78
New Hope	211.30	.00
Northern Chapel	.00	.00
Northside	1,492.88	2,386.50
Oak Grove	208.49	218.25
Oakwood	553.11	299.00
Old Bethlehem	142.46	149.30
Poplar Grove	1,024.71	507.18
Poplar Springs	1,207.00	450.00
Rutherford, First	1,506.25	1,151.25
Salem	893.11	511.85
Southside	241.22	46.71
Springhill	415.00	181.00
Trenton, First	4,667.90	1,249.97
Walnut Grove	250.00	536.75
West Side	100.00	.00
White Hall	1,525.00	1,114.00
Total	60,605.28	45,786.55

**GILES COUNTY**

Bradshaw	.00	150.00
Elkton	621.75	130.00
Hannah	.00	.00
Highland	137.47	.00
Liberty Hill	45.00	101.54
Lynnville, First	94.35	.00
Minnow Branch	.00	.00
Minor Hill	.00	105.65
New Hope	260.00	345.00
New Zion	86.07	432.76
Oak Grove	79.92	25.00
Prospect	.00	.00
Pulaski, First	3,336.94	824.50
Rock Springs	350.00	.00
Scotts Hill	.00	.0







Church	Cooperative Program	Designated
Swans Chapel.....	.00	.00
Talbott.....	1,387.00	1,859.62
White Pine, First.....	2,086.62	1,926.00
Total.....	28,545.14	42,621.45

## JUDSON

Cedar Hill.....	.00	.00
Harmony.....	.00	.00
Liberty.....	.00	.00
Maple Grove.....	.00	.00
Missionary Ridge.....	.00	.00
Mount Zion.....	.00	.00
New Hope.....	601.17	401.00
Old New Hope.....	.00	479.11
Parkers Creek.....	.00	.00
Pleasant Ridge.....	.00	.00
Walnut Grove.....	.00	46.00
Total.....	601.17	926.11

## KNOX COUNTY

Alice Bell.....	3,676.11	1,248.86
Arlington.....	6,931.32	8,385.25
Atkins.....	180.00	449.79
Ball Camp.....	3,466.33	1,811.16
Basswood.....	.00	75.00
Bays Mountain.....	.00	.00
Beaumont Avenue.....	883.35	624.50
Beaver Dam.....	1,545.44	4,542.33
Bell Avenue.....	4,249.98	5,019.73
Belmont Heights.....	807.47	.00
Bethany.....	.00	.00
Black Oak Heights.....	8,328.12	1,500.00
Blount Avenue.....	100.00	.00
Bon View.....	177.06	79.60
Branville.....	.00	.00
Broadway.....	300.00	2,787.00
Buffat Heights.....	529.16	777.51
Burnetts Creek.....	.00	.00
Callahan Road.....	.00	.00
Calvary.....	6,702.38	572.10
Cedar Bluff.....	119.22	.00
Central, Bearden.....	12,500.01	7,788.40
Central, Ftn. City.....	18,000.00	20,583.46
Churchwell Avenue.....	.00	1,300.00
City View.....	3,349.93	930.39
Clear Springs.....	1,752.21	1,100.25
Community.....	.00	.00
Concord, First.....	15,000.00	.00
Copper Ridge.....	.00	158.46
Cornerstone.....	230.00	153.00
Corryton.....	3,000.00	754.90
Cumberland.....	5,224.12	9,939.01
East Sunnyview.....	.00	.00
Ebenezer.....	452.71	377.10
Elm Street.....	424.66	.00
Euclid Avenue.....	2,269.83	1,789.60
Fairview.....	1,201.03	872.26
Fair Havens.....	966.75	886.27
Faith and Hope.....	274.91	221.20
Fellowship.....	235.16	1,300.00
Fifth Avenue.....	1,500.00	298.75
Flint Gap.....	.00	.00
Fort Hill.....	300.00	615.00
Fort Sanders.....	.00	.00
Fountain City, First.....	756.22	1,673.21
Galilee.....	1,169.76	2,703.43
Gallaher Memorial.....	801.44	200.00
Gayland Heights.....	447.39	612.00
Gethsemane.....	.00	25.00
Gillespie Avenue.....	807.54	892.21
Glenwood.....	2,550.00	2,452.81
Grace.....	7,435.88	5,668.79
Grassy Valley.....	800.93	602.37
Graveston.....	721.59	212.87
Greenway.....	1,287.19	350.00
Grove City.....	.00	307.52
Grove Heights.....	.00	.00
Grove Hill.....	616.55	177.42
Highland.....	555.32	90.28
Hill Crest.....	80.16	45.00
Hines Valley.....	.00	.00
Hoitt Avenue.....	.00	.00
Hollywood Hills.....	272.00	482.00
Holston.....	1,473.54	891.25
House Mountain.....	.00	.00
Immanuel.....	1,737.72	1,409.00
Inskip.....	3,000.00	6,056.78
Island Home.....	1,050.00	152.72
John Sevier.....	185.00	1,969.11
Jones Chapel.....	45.00	90.00
Kingston Pike.....	.00	.00
Knoxville, First.....	27,500.00	46,113.56
Knoxville, Second.....	1,352.24	3,261.60
Knoxville, Third.....	153.00	132.04
Lake View.....	.00	.00
Lincoln Park.....	7,967.48	2,923.72
Linden Avenue.....	105.97	214.91
Little Flat Creek.....	3,637.04	750.00
Lonsdale.....	625.00	556.00
Loveland.....	370.84	.00
Lyons Creek.....	2,415.97	2,910.70
Marble City.....	242.39	951.07
Marbledale.....	689.63	.00
Mars Hill.....	1,321.95	1,217.70
Mascot.....	1,632.82	1,175.83

Church	Cooperative Program	Designated
McCalla Avenue.....	1,541.66	2,962.56
Meadow View.....	30.00	750.00
Meridian.....	6,780.76	5,689.58
Middlebrook Pike.....	100.00	86.00
Midway.....	10.00	.00
Miracle.....	.00	.00
Moreland Heights.....	70.00	.00
Mount Carmel.....	1,021.46	3,508.66
Mount Harmony.....	2,628.62	1,722.80
Mount Olive.....	5,097.75	5,549.35
Mount Olive, East.....	.00	.00
Mountain View.....	356.09	.00
New Hope.....	.00	.00
New Hopewell.....	2,742.84	3,391.08
New Salem.....	.00	.00
North Acres.....	.00	224.72
North Glenwood.....	.00	.00
North Hills.....	.00	.00
North Knoxville.....	5,950.64	623.54
North Side.....	.00	.00
Northwest.....	105.00	320.00
Norwood.....	300.00	1,163.25
Oakwood.....	2,000.01	670.21
Parklane.....	1,275.26	662.94
Parkway.....	1,995.18	2,687.86
Peoples Missionary.....	75.75	55.00
Piney Grove.....	.00	839.33
Powell, First.....	5,000.00	1,343.68
Ramsey Heights.....	.00	.00
Reunion.....	132.86	17.65
Ridgedale.....	602.97	1,246.50
Ridgeview.....	802.25	2,361.47
Riverdale.....	3,377.25	1,183.25
Riverview.....	1,963.01	4,181.25
Rocky Hill.....	2,000.00	172.76
Roseberry.....	368.20	1,497.19
Ruggles Ferry.....	.00	.00
Salem.....	2,879.00	4,337.01
Scottish Pike.....	.00	.00
Seven Islands.....	.00	529.30
Sevier Heights.....	7,632.65	6,415.72
Sevier Home.....	1,212.29	520.75
Sharon.....	1,666.67	3,637.19
Smith Grove.....	.00	.00
Smithwood.....	4,500.00	11,727.65
South Knoxville.....	3,770.00	5,784.95
Stoney Point.....	180.00	.00
Sunset Heights.....	.00	1,001.00
Sutherland Avenue.....	.00	.00
Tarklin Valley.....	.00	50.00
Tennessee Avenue.....	434.00	403.32
Third Creek.....	1,631.29	432.00
Thorn Grove.....	27.75	458.40
Three Points.....	.00	.00
Timothy Street.....	643.30	216.40
Tower Heights.....	60.00	246.20
Trinity.....	1,259.14	.00
Tuckahoe.....	.00	.00
Tyson.....	.00	.00
Union.....	1,729.00	2,271.95
Unity.....	.00	152.44
Valley Grove & B. C.....	.00	325.33
Valley Grove & S. Pk.....	6,176.01	6,360.71
Vestal.....	.00	.00
Wallace Memorial.....	29,240.85	24,464.98
Washington Avenue.....	714.60	35.00
Washington Pike.....	3,835.00	4,272.50
West End.....	341.54	.00
West Haven.....	2,067.64	.00
West Hills.....	6,110.00	1,990.63
West Knoxville.....	2,997.00	254.17
West Lonsdale.....	2,911.89	4,535.00
West Side.....	.00	695.39
Association.....	.00	500.00
Total.....	306,832.00	288,740.40

## LAWRENCE COUNTY

Barnesville.....	15.00	19.70
Beech Grove.....	.00	.00
Bethel.....	.00	.00
Blooming Grove.....	20.00	200.00
Bonnertown.....	200.00	248.25
Brace.....	30.00	87.50
Center Point.....	.00	469.00
Deerfield.....	234.75	117.00
Ethridge.....	181.09	608.00
Evas Chapel.....	114.82	.00
Faith.....	200.00	402.47
Five Points.....	45.00	.00
Gum Springs.....	637.36	.00
Highland Park.....	2,280.38	2,075.04
Immanuel.....	749.60	448.00
Iron City.....	.00	.00
Lawrenceburg, First.....	3,440.31	2,927.25
Leoma.....	593.08	1,752.44
Liberty Grove.....	.00	.00
Loretto.....	704.92	214.00
Macedonia.....	.00	.00
Mars Hill.....	60.00	25.00
Meadow View.....	1,059.08	1,027.72
Mount Horeb.....	240.00	449.55
New Prospect.....	663.00	20.00
O. K.....	.00	.00
Oak Hill.....	.00	150.00
Park Grove.....	160.99	25.00
Pine Grove.....	145.00	73.76
Pleasant Grove.....	.00	.00

Church	Cooperative Program	Designated
Ramah.....	105.00	58.50
St. Joseph, First.....	402.25	172.40
Summertown.....	648.30	554.07
West Point.....	153.50	.00
Total.....	13,083.43	12,124.65

## LOUDON COUNTY

Antioch.....	.00	1,372.54
Ballards Chapel.....	306.00	68.00
Beals Chapel.....	104.00	351.00
Blairland.....	1,922.65	2,000.00
Calvary, Lenoir City.....	4,899.20	777.18
Calvary, Loudon.....	392.46	.00
Cave Creek.....	.00	45.00
Corinth.....	1,316.20	1,728.50
Dixie Lee.....	2,382.56	1,293.85
Dogwood.....	.00	42.72
East Hills.....	242.78	100.00
Everett Road.....	130.28	168.00
Friendship.....	.00	931.82
Highland Park.....	.00	2,221.00
Kingston Pike.....	682.57	151.47
Lenoir City, First.....	15,083.25	10,561.25
Lenoir City, Second.....	293.00	100.06
Loudon, First.....	2,625.32	1,104.73
Morganton.....	219.35	.00
Mount Pleasant.....	31.20	108.79
Mount Zion.....	257.95	.00
Mountain View.....	.00	.00
Nelson Street.....	.00	258.97
New Midway.....	161.67	398.98
New Providence.....	1,900.00	661.00
Oral.....	501.00	1,167.70
Philadelphia, First.....	1,784.21	1,325.00
Pine Grove.....	.00	.00
Pleasant Hill.....	3,112.89	1,386.76
Prospect.....	652.07	921.25
Riverview.....	293.37	250.00
Silver Ridge.....	.00	177.94
South Holston.....	.00	.00
Stackton Valley.....	176.00	285.00
Stoney Point.....	.00	.00
Union Fork Creek.....	171.88	100.00
Vaughns Chapel.....	540.94	529.32
West Broadway.....	.00	131.25
Total.....	40,182.80	30,719.08

## MC MINN-MEIGS

Antioch.....	1,650.53	1,530.82
Athens, First.....	16,066.66	9,525.59
Bethel Springs.....	.00	.00
Bethsada.....	.00	.00
Brookhill.....	150.00	.00
Calhoun, First.....	3,226.31	1,426.50
Calvary, Decatur.....	.00	200.00
Calvary, Etowah.....	30.00	220.66
Cambria.....	.00	.00
Central.....	1,039.91	421.00
Clay Hill.....	.00	.00
Clear Springs.....	.00	300.00
Clearwater.....	505.34	703.00
Cog Hill.....	551.58	268.35
Conasauga.....	.00	.00
Cotton Port.....	.00	.00
Decatur, First.....	406.00	435.00
Dixon Avenue.....	.00	115.20
Double Springs.....	1,460.88	627.00
East Athens.....	4,415.03	199.50
East Niota.....	.00	328.75
East View.....	190.00	379.00
Eastanalee.....	4,876.73	698.00
Englewood, First.....	2,800.00	.00
Etowah, First.....	2,400.00	2,274.85
Five Point.....	.00	.00
Good Hope.....	278.28	820.00
Good Springs.....	1,576.05	286.89
Hiwassee.....	.00	183.56
Idlewild.....	.00	.00
Lakeview.....	207.77	158.50
Lamontville.....	.00	60.00
Manilla Chapel.....	25.00	10.00
Marshall Hill.....	.00	445.45
McMahan Calvary.....	574.21	527.15
Mt. Harmony #1.....	.00	.00
Mt. Harmony #2.....	451.92	247.00
Mount Pisgah.....	375.72	867.47
Mount Verd.....	412.79	100.00
New Bethel.....	.00	62.00
New Hopewell.....	.00	117.03
New Zion.....	75.00	18.00
Niota, First.....	420.00	1,240.60
North Athens.....	3,577.04	1,963.92
North Etowah.....	5,733.92	5,307.70
Oak Grove.....	582.70	1,397.60
Old Salem.....	300.00	.00
Parkway.....	301.76	47.55
Pond Hill.....	522.48	575.88
Pope Avenue.....	342.00	.00
Riceville, First.....	1,083.27	435.60
Rock View.....	.00	.00
Rocky Mount.....	61.50	36.00
Rogers Creek.....	147.96	.00
Sanford.....	.00	56.21
Shiloh.....	156.00	163.00
Short Creek.....	.00	150.00
South Liberty.....	460.59	.00

Church	Cooperative Program	Designated
Stephensville.....	.00	.00
Union Grove #1.....	.00	.00
Union Grove #2.....	860.00	251.75
Union Hill.....	.00	.00
Union McMinn.....	.00	355.36
Valley Road.....	.00	.00
Valley View.....	.00	.00
Walnut Grove.....	466.42	1,100.00
West View.....	200.00	828.50
Wildwood.....	789.51	4,247.50
Zion Hill.....	.00	100.00
Total.....	59,750.86	41,813.44

## MADISON-CHESTER

Antioch.....	51.05	24.91
Ararat.....	1,292.72	1,601.25
Beech Bluff.....	247.77	626.09
Beech Grove.....	81.17	62.00
Bemis, First.....	7,070.42	3,595.50
Bethel.....	137.47	.00
Bible Grove.....	1,080.00	100.00
Calvary.....	4,194.54	2,970.54
Clover Creek.....	819.90	184.79



Church	Cooperative Program	Designated	Church	Cooperative Program	Designated	Church	Cooperative Program	Designated	Church	Cooperative Program	Designated
Knob Creek.....	242.33	191.00	Stoney Gap.....	.00	.00	Rosedale.....	2,199.90	.00	Riddleton.....	104.83	.00
Lawrence Grove.....	.00	152.00	Thorn Hill.....	.00	.00	Salem.....	.00	150.00	Rome.....	318.68	263.68
Mission Chapel.....	.00	.00	Trent Valley.....	.00	.00	Saturn Drive.....	5,695.52	2,111.91	Total.....	3,821.76	5,710.62
Morresville Pike.....	.00	85.79	Unicol.....	.00	.00	Scottsboro.....	293.54	144.39	NOLACHUCKY		
Mount Pleasant, First.....	2,061.00	456.23	Union.....	.00	.00	Shelby Avenue.....	3,955.21	435.23	Alpha.....	2,419.63	296.69
Northside.....	502.35	433.22	Walkers.....	.00	.00	Smith Springs.....	700.00	1,000.00	Bethel.....	1,886.52	2,575.01
Pleasant Heights.....	2,240.92	1,178.71	Wallens Bend.....	.00	.00	South Gate.....	1,872.26	731.41	Beulah.....	425.99	510.65
Riverview.....	1,006.86	1,030.00	Yellow Branch.....	.00	.00	Temple.....	1,478.00	3,052.00	Bibles Chapel.....	153.19	1,330.15
Rock Springs.....	412.50	690.00	Total.....	90.00	323.92	Tulip Grove.....	135.00	416.14	Briar Thicket.....	.00	.00
Santa Fe.....	200.00	173.85	NASHVILLE			Tusculum Hills.....	4,408.26	2,195.24	Brown Springs.....	577.97	296.25
Southside.....	370.77	100.00	Alta Loma.....	960.00	1,346.27	Two Rivers.....	42,413.27	22,133.86	Buffalo Trail.....	2,291.45	2,223.40
Spring Hill, First.....	45.00	306.49	Antioch.....	1,596.56	886.25	Una.....	3,125.01	3,348.86	Bulls Gap.....	938.71	535.44
Swan Creek.....	40.00	125.00	Arrington, First.....	573.08	100.00	Union Hill.....	1,944.58	262.00	Calvary.....	.00	3,250.00
Theta.....	34.41	12.00	Ashland City, First.....	1,765.71	873.60	Valley View.....	1,452.61	1,107.50	Calvue.....	.00	.00
Viola.....	60.00	.00	Bakers Grove.....	466.51	241.00	Walker Memorial.....	1,853.59	420.00	Catherine Nenny.....	343.49	508.06
Williamsport.....	121.62	26.00	Bellevue.....	1,924.79	1,083.00	West Nashville.....	268.31	86.00	Cedar Creek.....	.00	985.00
Total.....	18,901.26	21,529.33	Belmont Heights.....	23,394.27	10,265.85	West Trinity Lane.....	178.50	76.11	Cedar Grove.....	.00	.00
MIDLAND			Ben Allen Road.....	289.00	.00	West View.....	20.00	73.75	Central.....	.00	.00
Beaverdale.....	.00	.00	Bending Chestnut.....	.00	9.50	Westwood.....	1,875.00	1,804.58	Cherokee Hills.....	.00	.00
Bells Camp Ground.....	418.00	755.00	Berean.....	.00	.00	White Bluff, First.....	561.08	270.65	Concord.....	253.65	138.50
Bethany.....	130.50	.00	Berryville.....	482.00	.00	Whitsets Chapel.....	660.06	.00	Country Church.....	.00	.00
Bethel, Coryton.....	70.19	.00	Bluegrass.....	6,441.60	311.50	Whitworth.....	.00	.00	Enterprise.....	479.54	1,040.00
Bethel, Knox, Rt. 6.....	223.27	.00	Bordeaux.....	83.00	.00	Woodbine.....	5,200.73	4,165.77	Fairfield.....	.00	154.20
Bishopville.....	137.40	70.00	Brentwood.....	13,599.16	13,448.47	Woodcock Memorial.....	300.12	9.00	Fairview.....	1,024.31	575.00
Black Oak Ridge.....	.00	82.47	Broadmoor.....	1,131.54	458.87	Woodmont.....	28,548.86	4,436.68	Fernwood.....	30.00	625.00
Cedar Grove.....	.00	316.44	Brook Hollow.....	7,833.32	6,989.11	Total.....	413,115.58	224,312.86	Friendly View.....	.00	.00
Central View.....	68.15	.00	Brookside.....	1,990.09	1,885.61	NEW DUCK RIVER			Grace.....	1,606.90	.00
Clear Springs.....	.00	500.00	Calvary.....	744.12	.00	Bell Buckle, First.....	126.66	129.26	Highland.....	93.00	64.49
Deep Springs.....	.00	.00	Centennial.....	30.00	150.00	Calvary.....	1,247.12	332.42	Hillcrest.....	2,583.32	.00
Hinds Creek.....	.00	.00	Central.....	.00	.00	Charity.....	100.74	.00	Holts.....	.00	300.00
Hines Creek Missionary.....	.00	.00	Charlotte Road.....	2,666.73	711.60	Cornersville, First.....	1,478.47	572.60	Kidwells Ridge.....	.00	1,000.00
Home Faith.....	.00	.00	College Grove.....	96.40	352.10	Eastview.....	322.00	125.00	Leadvale.....	599.08	1,172.26
Mount Harmony.....	.00	.00	Concord.....	434.00	592.87	East Commerce.....	2,375.23	1,938.96	Lebanon.....	647.15	444.32
Mount Zion.....	239.73	130.00	Criewood.....	10,010.35	.00	Edgemont.....	1,054.81	879.71	Macedonia.....	.00	.00



Church	Cooperative Program	Designated
Oak Grove	491.26	272.45
Old Ocoee	.00	58.00
Pine Ridge	75.00	.00
Pleasant Grove	75.00	.00
Shady Springs	.00	.00
Shiloh	428.98	213.04
Smyrna	645.06	118.00
Springtown	.00	.00
Towee	.00	.00
Victory	.00	.00
Welcome Valley	.00	.00
Wetmore	90.00	125.00
Zion	865.81	1,718.80
Total	5,249.68	5,423.08

## RIVERSIDE

Allardt	123.76	.00
Allons	604.75	200.00
Byrdstown, First	2,250.12	2,421.59
Celina, First	88.06	61.18
Clarkrange	73.30	68.00
Columbia Hill	78.45	.00
Etter	339.77	305.67
Falling Springs	.00	.00
Fellowship	.00	222.37
Friends Chapel	.00	.00
Hanging Limb	147.10	.00
Jamestown, First	2,441.81	4,126.00
Livingston, First	3,343.40	2,302.45
Lovejoy	.00	.00
Memorial	475.77	201.02
Mineral Springs	30.00	.00
Moodyville	89.69	43.42
Mount Union	51.02	131.22
Oak Grove	.00	.00
Pine Haven	20.00	.00
Rickman, First	120.00	.00
Round Mountain	.00	.00
Three Forks	59.00	.00
Trinity	42.64	.00
Vines Ridge	.00	.00
West Fentress	116.12	173.10
Total	10,494.76	10,256.02

## ROBERTSON COUNTY

Barren Plains	2,233.35	738.00
Battle Creek	100.15	265.49
Bethel	7,949.62	2,514.26
Bethlehem	1,658.84	766.75
Cedar Hill	522.70	333.00
Center Point	277.83	.00
Cross Road	.00	.00
Eastland Hgts.	1,247.82	50.00
Ebenezer	986.47	1,489.85
Flewellyn	505.29	56.13
Grace	2,088.27	832.25
Greenbrier, First	5,415.86	3,158.18
Hopewell	1,123.40	2,089.00
Lights Chapel	2,328.50	708.83
Mount Carmel	8,012.05	3,050.00
North Springfield	3,202.07	.00
Oak Grove	6,592.38	3,214.52
Oakland	639.33	172.40
Orlinda	2,999.60	2,335.43
Pleasant Hill	1,476.85	585.06
Red River	2,321.92	703.21
Ridgetop, First	673.10	549.32
Rock Springs	359.49	320.69
Springfield	9,313.79	4,042.44
Springhill	268.00	103.81
White House, First	417.13	337.00
Williams Chapel	188.19	761.75
Total	62,902.00	29,177.37

## SALEM

Auburn	634.87	319.71
Burt	638.00	120.00
Calvary	262.62	636.59
Center Hill	167.51	97.90
Copper Chapel	.00	.00
Covenant	266.00	133.34
Dale Ridge	.00	219.00
Dowelltown	126.00	148.00
Dry Creek	285.30	65.06
Elizabeth Chapel	313.00	300.00
Indian Creek	114.33	.00
Mount Hermon	289.13	68.88
Mount Zion	.00	260.00
New Home	.00	.00
New Hope	65.81	109.55
Plainview	202.00	.00
Pleasant View	154.38	50.00
Salem	1,066.27	3,268.57
Shiloh	174.95	162.55
Smithville	1,320.00	1,867.47
Snow Hill	279.16	75.00
Sycamore	.00	262.78
Upper Helton	334.65	.00
West Main	450.00	669.17
Whorton Springs	422.79	345.50
Wolf Creek	.00	116.00
Woodbury	3,178.00	3,708.00
Total	10,744.77	13,003.07

Church	Cooperative Program	Designated
SEQUATCHIE VALLEY		
Baptist Hill	194.38	200.00
Cartwright	480.10	392.00
Cold Springs	.00	.00
Daus	104.93	.00
Dunlap, First	2,108.30	200.00
East Valley	.00	.00
Ebenezer	742.08	515.35
Ewtonville	793.40	360.00
Flat Mountain	.00	.00
Grace	123.07	.00
Jasper, First	3,470.21	2,435.49
Kimball	624.00	502.06
Laager	45.00	.00
Lees Station	34.75	.00
Little Hopewell	.00	.00
Midway	91.22	.00
Mineral Springs	45.00	220.75
Mount Calvary	124.10	350.00
Palmer, First	89.25	.00
Pikeville, 1st So.	1,180.83	400.00
Richard City, First	105.00	150.00
Sequatchie, First	165.44	.00
S. Pittsburg, First	5,457.36	3,693.31
South Whitwell	384.00	30.00
Whitwell, First	1,346.15	1,759.83
Total	17,708.57	11,208.79

## SEVIER COUNTY

Alder Branch	1,365.99	1,535.00
Antioch	659.87	700.70
Banner	289.07	165.50
Beech Springs	.00	.00
Bethel	799.10	867.50
Blowing Cave	10.00	.00
Boyd's Creek	575.22	572.00
Bradleys Chapel	.00	.00
Calvary	.00	.00
Conner Heights	.00	.00
Covemont	28.00	.00
Dripping Springs	141.51	.00
Dupont	445.92	145.00
French Broad Valley	.00	.00
Friendship	.00	.00
Gatlinburg, First	3,181.00	3,208.89
Gists Creek	268.51	.00
Gum Stand	.00	.00
Henderson Chapel	.00	71.20
Hills Creek	128.48	78.86
Howards View	.00	.00
Hurst Chapel	.00	.00
Jones Chapel	96.00	300.00
Knob Creek	152.84	1,113.01
Laurel Branch	15.75	.00
Laurel Grove	42.02	.00
Lebanon	.00	273.85
Little Cove	.00	.00
Maples Branch	30.00	34.46
Millican Grove	323.42	814.00
Mount Zion	99.87	200.00
Mountain View	330.49	300.00
New Era	179.58	.00
New Salem	180.00	68.42
Oak City	452.00	1,693.00
Oldhams Creek	28.56	78.92
Paw Paw Hollow	.00	100.00
Pearl Valley	.00	.00
Pigeon Forge, First	3,046.58	1,435.00
Providence	110.00	.00
Red Bank	.00	.00
Red Bank, First	.00	.00
Richardsons Cove	153.96	95.00
Roaring Fork	.00	.00
Sevierville, First	15,061.02	7,605.02
Sevierville, Second	238.13	712.25
Shady	248.00	244.98
Shiloh	.00	.00
Sims Chapel	1,079.21	518.70
Sugar Loaf	.00	.00
Trinity	.00	.00
Union Valley	353.88	.00
Valley View	25.00	165.00
Waldens Creek	50.00	25.00
Walnut Grove	.00	228.00
Wears Valley	379.87	2,000.00
Zion Grove	.00	.00
Zion Hill	654.30	1,232.96
Total	31,223.15	26,582.22

## SHELBY COUNTY

Agape	2,734.96	150.32
Ardmore	13,246.23	5,825.46
Arlington	.00	365.28
Audubon Park	6,921.96	8,506.95
Balmoral	5,166.15	12,501.99
Bartlett	11,856.92	5,862.00
Bellevue	32,656.74	38,002.13
Berclair	7,421.28	6,684.71
Beverly Hills	4,720.78	4,056.87
Big Creek	452.42	241.33
Blue Ridge Park	482.50	85.75
Boulevard	5,022.23	2,695.75
Broadmoor	17,630.80	11,974.77
Broadway	3,024.00	1,224.00
Brookmeade	.00	77.50

Church	Cooperative Program	Designated
Brunswick	3,107.00	686.00
Buntyn Street	461.07	.00
Calvary	250.00	75.00
Capleville	.00	1,101.24
Charjean	263.80	378.34
Cherokee	8,394.26	.00
Cherry Road	3,737.00	798.00
Collerville, First	15,810.50	.00
Colonial	8,166.26	444.00
Cordova	3,340.04	3,142.97
Cottonwood Heights	86.22	.00
Covington Pike	500.00	1,176.38
Crestview	836.77	2,035.50
Dellwood	201.00	1,329.62
Eads	274.70	500.00
East Acres	288.45	.00
East Park	8,177.63	12,488.23
Egypt	1,593.01	118.50
Ellendale	5,139.67	3,211.82
Elliston	900.00	9.00
Emmanuel	126.00	.00
Eudora	7,666.68	1,170.00
Fairlawn	184.73	1,296.90
Fellowship	452.80	.00
Fisherville, First	499.98	694.00
Forest Hill	420.05	1,269.26
Frayser	6,174.36	3,221.37
Georgian Hills	3,978.80	3,093.52
Germantown	7,284.04	1,057.00
Glen Park	1,300.00	621.38
Graceland	5,974.27	597.43
Graham Heights	.00	914.88
Greenhills	2,676.14	188.00
Greenlaw	.00	110.00
Havenview	63.59	.00
Hickory Hills	4,045.70	328.37
Hickory Ridge	3,726.88	1,123.38
Highland Heights	15,833.32	11,634.22
Hollywood	1,213.00	1,001.88
Holmes Street	200.00	233.00
Kensington	1,899.20	231.78
La Belle Haven	3,694.98	410.09
La Belle Place	5,470.05	.00
Lakeshores	592.00	475.00
Lamar Heights	3,107.08	3,107.46
Leclair	5,992.40	1,318.73
Leawood	12,815.32	5,705.45
Longcrest	346.68	666.69
Lucy	677.34	1,065.56
Macon Road	.00	90.00
Mallory Heights	.00	.00
Mc Lean	.00	1,855.30
Memphis, First	25,076.05	36,036.85
Memphis, Second	5,104.06	9,044.99
Merton Avenue	3,620.42	4,224.21
Millington, First	7,572.59	3,322.94
Millington, Second	254.00	60.00
Mountain Terrace	3,280.00	1,670.00
Mullins Station	1,453.40	950.56
National Avenue	5,414.84	729.74
New Allen Road	433.42	336.43
North Frayser	120.00	.00
Northview	3,900.82	993.44
Oakhaven	6,078.24	.00
Oaklawn	779.84	1,140.00
Oakville Memo	2,969.27	293.50
Orchi	995.66	116.00
Park Ave	6,224.05	4,871.95
Parkway Village	7,085.80	195.50
Peabody	390.00	1,770.58
Poplar Avenue	166.76	512.10
Prescott Memorial	.00	.00
Raleigh	10,635.23	11,108.94
Raleigh Heights	.00	.00
Raleigh North	680.29	628.00
Range Hills	1,962.56	1,189.37
Richland	.00	1,217.23
Ridgecrest	658.42	222.13
Ridgeway	8,000.01	13,137.54
Rose Hill	.00	.00
Rosemark	.00	.00
Rugby Hills	3,970.39	1,415.51
Scenic Hills	2,794.71	2,365.30
Shelby Forest	1,727.34	954.10
Sherwood	471.88	389.92
Skyview	1,962.49	.00
Southland	4,252.58	1,919.96
Southmoor	.00	.00
Speedway Terrace	925.00	4,098.11
Summer Ave	305.87	.00
Tchulahoma	50.00	.00
Temple	9,108.26	5,874.84
Towering Oaks	100.00	111.35
Trafalgar Village	1,398.47	.00
Trinity	4,500.00	1,350.52
Union Avenue	3,624.98	8,460.51
Victory Heights	63.95	.00
Walnut Grove	157.74	.00
Wells Station	5,970.89	4,729.53
West Frayser	.00	405.00
Bennington Park	75.00	50.00
White Station	2,083.00	4,008.00
Whitehaven	15,875.35	13,489.11
Whitten Memorial	750.00	.00
Woodstock	844.13	1,002.05
Total	433,157.50	313,625.87

Church	Cooperative Program	Designated
SHILOH		
Adamsville, First.....	1,290.00	450.00
Bethel Springs.....	124.27	.00
Butler Chapel.....	263.00	.00
Calvary.....	.00	.00
Center Hill.....	543.88	.00
Chapel Hill.....	.00	.00
Chewalla.....	339.55	134.78
Clear Creek.....	.00	.00
Counce, First.....	1,915.81	880.01
Crump, First.....	315.66	.00
Curry Chapel.....	.00	.00
Falcon.....	310.48	.00
Friendship.....	21.00	.00
Good Hope.....	.00	75.00
Gravel Hill.....	803.40	4,300.05
Hopewell.....	581.46	.00
Lakeview.....	63.00	458.52
Lorraine.....	.00	12.64
Michie, First.....	150.00	791.00
Morris Chapel.....	390.15	130.00
Mount Gilead.....	281.96	207.83
Mount Hermon.....	477.84	247.00
Mount Zion.....	46.80	50.00
New Harmony.....	284.52	.00
New Hope-Pocahontas.....	63.72	50.00
New Hope-Savannah.....	.00	.00
Olive Hill, East.....	94.60	23.58
Olive Hill, West.....	.00	500.00
Pleasant Site.....	141.53	33.00
Ramer.....	598.28	520.70
Savannah, First.....	3,807.00	1,469.76
Selmer, First.....	1,500.00	300.00
Sharon.....	455.12	150.00
Southside.....	305.12	550.00
Trinity.....	25.00	115.74
Turkey Creek.....	311.46	701.86
West Shiloh.....	450.00	661.00
Total.....	15,954.61	12,812.47



Church	Cooperative Program	Designated
Litz Manor	3,563.00	1,580.24
Long Island	154.00	.00
Lynn Garden	1,590.40	198.10
Orebank	838.00	632.39
Reservoir Road	756.65	571.86
Springdale	283.32	153.00
Sullivan	1,736.56	1,591.50
Summersville	504.00	123.00
West Colonial Hills	300.00	439.10
West View	.00	968.00
Total	55,736.30	35,362.55

SWEETWATER

Altoona	.00	100.00
Antioch	.00	.00
Beatys Chapel	.00	.00
Bethlehem	85.50	85.50
Big Creek	.00	273.80
Calvary	.00	59.23
Cane Creek	.00	.00
Cedar Fork	1,204.94	.00
Cedar Valley	403.63	500.00
Chestnut	474.36	825.00
Chilhowee	.00	.00
Christianburg	207.02	343.71
Citico	147.00	318.26
Clifton	.00	.00
Coker Creek	.00	.00
Compromise	.00	20.00
Druid Hills	.00	.00
Ebenezer	.00	.00
Fairview	.00	.00
Fairview Tabernacle	450.00	622.99
Four-Eleven	.00	.00
Friendship	.00	591.57
Glenlock	.00	372.95
Gregorys Chapel	188.70	109.74
Holly Springs	.00	.00
Hopewell Springs	75.00	213.66
Howards Chapel	.00	.00
Island Creek	.00	455.28
Lakeside	425.00	137.00
Long Ridge	250.00	.00
Macedonia	.00	.00
Madisonville, First	4,149.99	5,299.70
Maple Springs	.00	.00
Millers Chapel	.00	61.08
Mount Harmony	.00	25.00
Mount Isabella	.00	.00
Mount Pleasant	.00	86.61
Mount Vernon	.00	.00
Mount Zion	167.98	100.00
Murrays	.00	113.00
New Bethany	.00	.00
New Macedonia	.00	1,500.00
New Providence	.00	.00
North Sweetwater	.00	937.00
Notchey Creek	150.00	354.75
Oak Grove	197.34	90.00
Oakland	190.00	.00
Old Sweetwater	.00	60.00
Piney Grove	.00	.00
Poplar Bluff	.00	881.14
Reed Springs	75.00	727.37
Rocky Springs	135.00	1,039.00
Rural Vale	.00	.00
Shady Grove	.00	.00
Sheltons Grove	.00	.00
Shoal Creek	.00	.00
South Madisonville	93.92	281.76
Sweetwater, First	8,113.04	3,997.27
Tellico	.00	.00
Tellico Plains, First	1,479.27	741.03
Tevis Springs	36.00	398.39
Towee Falls	.00	.00
Trinity	.00	.00
Unicoi	4.00	.00
Union Grove	20.00	.00
Union Hall	.00	.00
Vonore	489.11	.00
Watson Chapel	15.00	7.50
Westside	30.00	202.00
Williamsburg	.00	.00
Total	19,256.80	21,931.29

TENNESSEE VALLEY

Bethel	119.51	200.00
Central	1,336.00	70.00
Clear Creek	.00	93.48
Cranmore Cove	24.97	82.00
Dayton, First	2,525.57	3,760.89
Garrison	.00	613.20
Grandview	.00	100.00
Graysville	.00	.00
High Point	44.10	85.69
Lake Drive	.00	400.00
Mount Vernon	.00	720.00
Mount Zion	214.75	302.77
New Union	1,163.43	.00
Ogden	.00	2,470.78
Pennine	.00	982.86
Saint Clair	.00	189.00
Sale Creek	139.95	53.00
Salem	501.85	461.76
Smyrna	545.36	732.00

Church	Cooperative Program	Designated
Spring City, First	6,285.87	2,212.24
Walden Ridge	1,060.20	600.00
Washington	173.20	.00
Wolf Creek	757.32	891.25
Yellow Creek	262.89	1,356.44
Total	15,154.97	16,377.36

TRUETT

Cedar Grove	155.95	80.00
Immanuel	187.42	89.77
McEwen, First	895.91	3,507.33
Oak Grove	68.00	55.00
Sylvia	737.25	62.55
Trace Creek	2,208.89	507.66
Waverly, First	3,269.57	2,246.01
Total	7,522.99	6,548.32

UNION

Bear Cove	1,092.99	497.68
Bethel	259.62	70.00
Boiling Springs	129.83	155.00
Doyle, First	122.89	467.76
Greenwood	96.32	.00
Gum Springs	481.41	563.58
Hickory Valley	10.00	360.00
Laurel Creek	43.66	256.16
Liberty	37.89	.00
Pistole	106.18	154.00
Pleasant Hill	147.08	.00
Quebeck	193.47	100.00
Sparta, First	1,366.66	1,161.90
Spencer, First	272.88	122.75
Total	4,360.88	3,908.83

WATAUGA

Antioch	.00	.00
Bakers Gap	106.23	92.00
Beck Mountain	566.95	37.00
Bethany	260.00	731.65
Bethel	78.00	134.00
Big Spring	949.36	1,011.14
Biltmore	1,947.62	1,487.05
Butler	791.02	30.00
Caldwell Springs	.00	20.00
Calvary	1,018.62	1,489.08
Cedar Grove	1,500.80	782.15
Cobbs Creek	161.76	485.32
Doe River	985.92	675.33
Doe Valley	.00	.00
Dungan Chapel	1,057.29	291.75
East Side	480.00	548.69
Elizabethton, First	6,704.00	5,502.32
Elk River	130.71	100.00
Evergreen	.00	.00
Fairview	719.00	.00
Grace	2,706.66	1,803.75
Hampton	710.00	.00
Happy Valley	1,060.42	481.39
Harmony	375.00	29.50
High Point	.00	.00
High Point Memorial	.00	.00
Hunter, First	2,184.00	.00
Hunter Memorial	268.30	100.00
Immanuel	5,461.88	2,463.31
Little Doe	715.84	525.20
Little Milligan	341.94	188.49
Little Mountain	292.94	67.00
Lynn Valley	237.72	600.00
Meadow View	.00	200.00
Midway	.00	.00
Mountain City, First	.00	75.00
Mountain View	.00	.00
New Hope	.00	.00
North Side	369.73	97.00
Oak Street	1,877.58	1,360.59
Pine Grove	.00	470.00
Pleasant Beach	.00	.00
Pleasant Grove	1,997.27	1732.86
Pleasant Home	.00	.00
Poplar Grove	39.50	183.77
Powder Branch	.00	405.00
Rainbow	.00	.00
Rittertown	1,044.53	844.66
Riverview	176.89	56.06
Roan Creek	150.00	75.00
Roan Mountain, First	498.12	364.45
Roan Park	225.20	235.00
Rock Springs	.00	100.00
Shady Valley	.00	100.00
Slam	6,752.67	2,663.55
Sink Valley	765.10	219.90
Sinking Creek	807.66	.00
State Line	498.10	161.00
Stone Mountain	.00	.00
Stoney Creek	.00	.00
Sugar Grove	.00	.00
Unaka	1,215.02	1,163.00
Union	1,001.14	1,068.25
Watauga, First	311.99	410.26
Willow Springs	.00	.00
Zion	335.87	600.00
Total	49,878.35	32,261.47

Church	Cooperative Program	Designated
Adams Chapel	350.00	410.00
Beach Springs	.00	15.00
Bethel	3,350.00	3,500.00
Bethlehem	.00	1,267.36
Bible Union	80.00	100.00
Calvary	242.90	101.45
Central	2,923.14	3,163.03
Corinth	55.00	125.00
Davis Memorial	.00	.00
Dresden, First	1,787.50	2,554.24
Fellowship	54.99	371.62
Gearins Chapel	167.72	198.36
Gleason, First	955.84	536.71
Greenfield, First	3,116.20	1,916.00
Hodges Chapel	.00	.00
Jolly Springs	895.49	767.00
Liberty	.00	.00
Macks Grove	45.00	500.00
Maranatha	.00	1,054.41
Moore's Chapel	25.00	33.00
New Hope	200.00	357.10
New Prospect	201.18	100.00
New Salem	143.89	57.25
Northwestern	553.61	500.00
Oak Grove No. 1	150.00	774.23
Oak Grove No. 2	.00	.00
Old Bethel	86.26	137.00
Palmersville	398.17	73.00
Pleasant Grove	.00	143.24
Pleasant View	158.56	439.62
Public Wells	.00	215.35
Ralston	517.78	249.00
Ruthville	30.00	.00
Sand Hill	.00	170.00
Sharon, First	761.00	700.00
Sidonia	75.00	135.14
Southside	2,309.75	1,865.18
Thompson Creek	60.00	341.50
Tumbling Creek	144.00	215.00
Union Grove	15.00	100.00
West Union	195.00	500.00
Total	20,047.98	23,685.79

WEAKLEY COUNTY

Adams Chapel	350.00	410.00
Beach Springs	.00	15.00
Bethel	3,350.00	3,500.00
Bethlehem	.00	1,267.36
Bible Union	80.00	100.00
Calvary	242.90	101.45
Central	2,923.14	3,163.03
Corinth	55.00	125.00
Davis Memorial	.00	.00
Dresden, First	1,787.50	2,554.24
Fellowship	54.99	371.62
Gearins Chapel	167.72	198.36
Gleason, First	955.84	536.71
Greenfield, First	3,116.20	1,916.00
Hodges Chapel	.00	.00
Jolly Springs	895.49	767.00
Liberty	.00	.00
Macks Grove	45.00	500.00
Maranatha	.00	1,054.41
Moore's Chapel	25.00	33.00
New Hope	200.00	357.10
New Prospect	201.18	100.00
New Salem	143.89	57.25
Northwestern	553.61	500.00
Oak Grove No. 1	150.00	774.23
Oak Grove No. 2	.00	.00
Old Bethel	86.26	137.00
Palmersville	398.17	73.00
Pleasant Grove	.00	143.24
Pleasant View	158.56	439.62
Public Wells	.00	215.35
Ralston	517.78	249.00
Ruthville	30.00	.00
Sand Hill	.00	170.00
Sharon, First	761.00	700.00
Sidonia	75.00	135.14
Southside	2,309.75	1,865.18
Thompson Creek	60.00	341.50
Tumbling Creek	144.00	215.00
Union Grove	15.00	100.00
West Union	195.00	500.00
Total	20,047.98	23,685.79

WESTERN DISTRICT

Bethlehem	180.00	433.11
Big Sandy, First	540.00	574.10
Birds Creek	155.77	148.00
Central Point	.00	85.00
Cottage Grove	766.54	865.00
Fairview	982.46	616.11
Friendship	.00	.00
Henry	150.00	115.00
Jones Chapel	225.00	188.00
Mansfield	580.74	283.81
Maplewood	2,801.00	1,821.05
McDavids Grove	.00	.00
Mount Sinai	187.26	20.50
New Bethel	.00	22.50
New Hope	50.00	.00
North Fork	568.74	234.00
Oak Hill	.00	.00
Paris, First	11,912.44	7,779.99
Point Pleasant	727.17	200.00
Puryear	3,151.59	613.60
Ramble Creek	18.00	100.00
Shady Grove	40.00	.00
Spring Creek	100.00	67.90
Spring Hill	697.74	216.80
Springville	241.50	85.00
Temple	4,629.24	240.33
Union Friendship	337.53	482.10
West Paris	6,078.74	1,265.00
Total	35,121.46	16,456.90

WILLIAM CAREY

Ardmore, First	.00	.00
Brogan Avenue	266.55	268.86
Calvary	15.00	.00
Cash Point	903.00	1,013.15
Donaldson Grove	565.11	.00
Elora	30.00	150.00
Fayetteville, First	6,131.33	1,353.31
Flintville, First	1,047.81	1,503.50
Hickory Grove	.00	.00
Hilldale	.00	200.00
Howell, First	.00	.00
Kelleys Creek	24.00	52.00
Kirkland	371.37	120.00
Lexie Cross Road	139.51	.00
Lincoln	902.42	293.25
Macedonia	456.58	231.58
Molina	.00	.00
Mulberry	15.00	.00
New Grove	45.00	.00
New Hope	.00	40.87
Oak Grove	49.78	.00
Oak Hill	247.00	.00
Parks City	1,740.00	833.89
Petersburg, First	174.35	99.54
Pleasant Grove	15.00	483.68
Pleasant Hill	486.59	.00
Pleasant Ridge	.00	.00
Prospect	140.00	15.00

Church	Cooperative Program	Designated
Stewarts Chapel	25.00	.00
Taft, First	.00	112.39
West End	914.49	347.40
Total	14,704.89	7,118.42

WILSON COUNTY

Alexandria	1,604.83	867.00
Bartons Creek	.00	648.00
Bellwood	235.78	65.22
Calvary	.00	.00
Cedar Creek	1,048.85	706.18
Cedar Grove	593.27	112.26
Chandler	87.78	21.00
Fairview	2,498.55	3,386.69
Fall Creek	2,408.40	1,880.01
Gladeville	983.45	445.60
Greenville	71.26	.00
Hillcrest	1,596.18	350.62
Hurricane	239.32	936.00
Immanuel	7,283.03	5,974.68
La Guardo	2,558.57	835.35
Lebanon, First	9,802.01	6,858.97
Linwood	42.23	.00
Macedonia	363.16	545.00
Martha	174.09	100.00
Mount Juliet	7,871.90	1,530.00
Mount Olivet	643.61	116.00
Prosperity	1,485.81	225.00
Ramah	124.08	.00
Rocky Valley	732.00	552.76
Round Lick	1,259.00	920.00
Rutland	.00	.00
Saulsbury	587.24	208.47
Shop Springs	450.00	644.50
Silver Springs	783.58	.00
Smith Fork	.00	.00
Southside	494.99	650.00
Trinity	1,197.49	270.82
Vine	95.55	359.53
Watertown, First	1,044.02	416.20
Association	.00	323.36
Total	48,360.03	29,998.22



## Missions challenge presented

# Population boom predicted in Northwest

Prophets of "boom" are predicting an explosion in the "energy corridor" that streaks through Wyoming, Montana, North and South Dakota.

They don't expect a nuclear explosion, even though uranium is partly behind the forecast.

Rather, they expect a population explosion caused by the energy crisis as the nation seeks to develop the vast natural resources of the Great Plains area. Lying just beneath the surface of the rolling hills are the nation's largest deposits of unmined coal; plus significant deposits of uranium ore, oil, and natural gas.

As a result of efforts to tap into this energy resource, boom towns already are springing up throughout Wyoming and parts of Montana as the nation gears up to meet the energy crisis. Populations of such towns suddenly

double, triple, or quadruple as mobile home parks sprout up.

What does all this mean to Southern Baptists in the Northern Plains Baptist Convention which encompasses the four states involved?

"It presents an unprecedented missions challenge to Baptists in the Northern Plains Convention," said Roy Owen, executive secretary of the convention.

"It's bringing in numerous families and new people, and we need to establish new churches and missions to minister to them," added Clyde Billingsley, missions and Brotherhood director for the Northern Plains Convention.

### Not Southern Baptists boom

Area missions directors who work closely with the small Baptist churches in the four

states see the energy boom, not as a bonanza bringing in thousands of Southern Baptists to strengthen their churches, but as a missions challenge.

O.R. "Bennie" Delmar, area director of missions for northern Wyoming where the boom started, pointed out that Southern Baptists need to get into these "boom town" situations by establishing a mission-type church in the early stages before the boom really starts.

"We just can't afford to wait to start a new church until the boom actually hits, for then the cost of land and building will be higher and it will be more difficult to get a good church site," Delmar said. "We need to start our churches on the ground floor of these boom towns, so they can grow with the town," Delmar insisted.

Wendell Mosser, pastor of First Southern Baptist Church in Douglas, Wyo., compared the boom in his town to the gold rush 100 years ago.

### Hurting deep down

"It's a frontier town," he said. "The men are making big money, but they booze it up. Deep down they're hurting. The cost of living is so high, and things are scarce." The best prospects for the church, he observed, are the people, almost half the town's 13,000 population, who live in the mobile homes.

The situation is similar in Gillette, Wyo., a boom town where population has jumped from 7,000 to 15,000. Newsweek reported that Gillette sits on top of "the world's largest single coal deposit, an 80-mile-long seam that

may contain as much as 20 billion tons of the stuff—fully one-fifth of the nation's mineable reserve."

South of Gillette is another boom town which is not even on the map. Wright, Wyo., claims a population of 2,000 and is planning for 10,000 residents in a few years.

Already there is a Baptist church in the town, meeting in a mobile chapel where the pastor, Ed Gordon, lives. Gordon came to Wright last summer to work as a maintenance man for the huge mobile home park in Wright where almost all the residents live.

At Rock Springs, Point of Rocks, and Green River, people were living in tents, sheds in gullies and ravines, travel trailers and campers because no other housing was available. Monroe Avenue Baptist Church and Flaming Gorge Baptist Church in Green River, plus Calvary Baptist Church in Rock Springs, sought to reach the newcomers.

"Our greatest need is for Baptist lay people to come up here, get jobs that are available, and plant their lives in Baptist churches as a mission outreach," said Mrs. Charles Crim, whose husband is area director of missions for Southern Wyoming.

Almost all the pastors and area missionaries agree that for those who are willing to do so, there is an unlimited spiritual power supply available to meet the challenge of missions in the energy corridor.

(Adapted from the January 1979 issue of World Mission Journal)

Get the Free Facts and low rates on

## HOSPITALIZATION LIFE INSURANCE-INCOME PROTECTION



RANDALL R. BASKIN  
PRESIDENT

Continental Insurance Service, Inc.  
A TENNESSEE CORPORATION

UNDERWRITTEN BY:  
UNION BANKERS INSURANCE COMPANY  
Dallas, Texas

These Are Our Specialties . . . .

PICK AND  
CHOOSE A  
PLAN FOR YOU!



... ACT NOW!

CUT OUT ALONG DOTTED LINE AND MAIL

- ☐ HOSPITALIZATION WITH MAJOR MEDICAL FEATURES— UB-758  
☐ OVER 65 MEDICARE SUPPLEMENT— UB-764  
☐ HOSPITALIZATION TO COVER PRE-EXISTING CONDITIONS OF  
 A. Cancer B. Heart Conditions  
 C. Diabetes D. Ulcers  
 E. Other Serious Ailments  
 (180 Days After Issue) 1773  
☐ DISABILITY INCOME PROTECTION— 751  
☐ CANCER INSURANCE— UB-754  
☐ LIFE INSURANCE TO AGE 80— UBL-129

FREE SAMPLE  
POLICY



Name \_\_\_\_\_ Date of Birth Is: \_\_\_\_\_

Address \_\_\_\_\_

City \_\_\_\_\_ State \_\_\_\_\_ Zip \_\_\_\_\_

Do Not Cut Here . . . Just Fold Over, Seal and Mail This Reply Envelope . . .

FROM - \_\_\_\_\_

No  
Postage Stamp  
Necessary  
If Mailed in the  
United States

BUSINESS REPLY MAIL  
FIRST CLASS PERMIT NO. 3294, NASHVILLE, TENN.



continental Insurance Service, Inc.  
A TENNESSEE CORPORATION

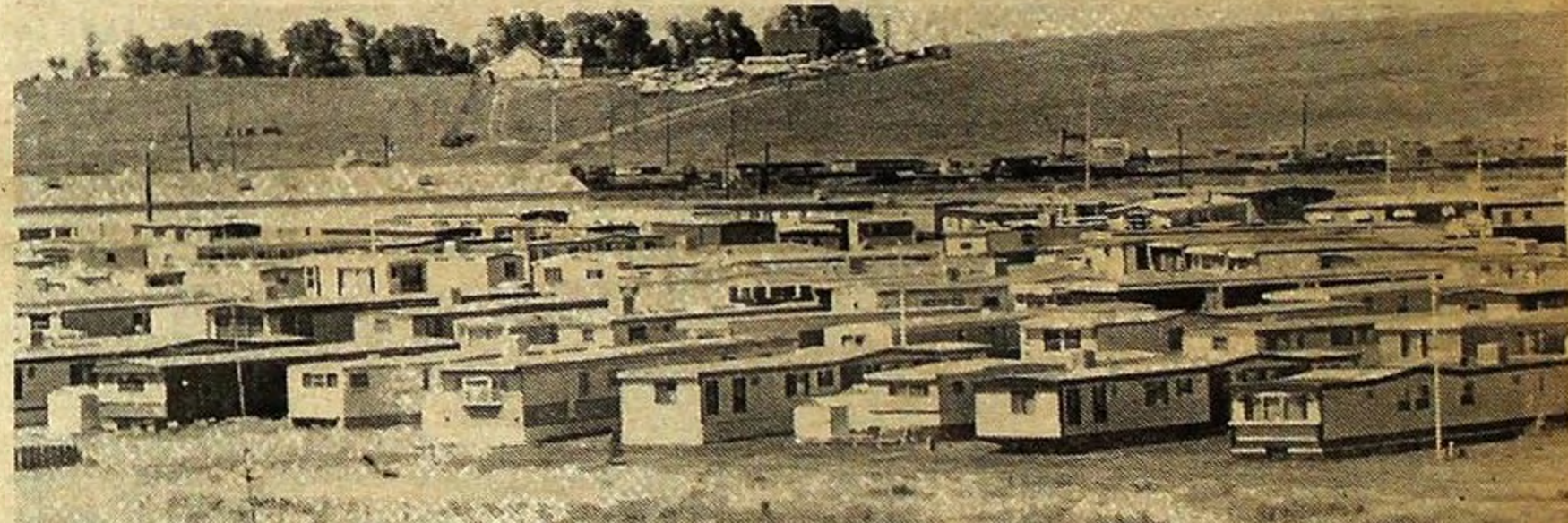
3709 Nolensville Road

P.O. Box 11383

Nashville, Tennessee 37211

PHONE 615-834-8002

CUT OUT ALONG DOTTED LINE AND MAIL



**MISSION AREA?**—Thousands of people, jammed into trailers and mobile homes, have flocked to boom towns like this one in Wyoming to mine coal discovered recently in the area. Baptists in the Northern Plains are attempting to establish a ministry in these towns.

## Interpretation

### Christian family relations

By Herschel H. Hobbs

"Likewise, ye wives, be in subjection to your own husbands... Likewise, ye husbands, dwell with them according to knowledge, giving honour unto the wife, as unto the weaker vessel." 1 Peter 3:1,7

From the outer circle of family life between a house servant and his owner (2:18ff.), Peter moves to the inner circle of the relationship between husband and wife. No home will be any stronger than a proper relation between the husband and wife.

Peter wrote in a culture where the wife occupied a lower status than the husband. Among the Romans, she was regarded as her husband's property. Even in Jewish life, though having a better position than in Roman culture, her position was lower than that of her husband. The Christian religion has gradually brought about the concept of freedom and equality between the sexes. But while not approving the status quo, Peter sought to regulate conduct in it.

He supposes a case where the wife is a Christian and the husband is a pagan. Her husband has not responded to the "word" or gospel witness. But he may respond to the Christian example [conversation, manner of life] of his wife [vv. 1-2]. "Fear" in verse 2

means reverence.

Thus the wife's adornment should not be outward. It should be inward [vv. 3-4]. "Adornment" renders the word kosmos or cosmos from the verb whence comes "cosmetics" [see v. 5, adorned]. This does not forbid a nice hair-do, jewelry, nice clothes, and cosmetics used in good taste. Rather the emphasis is upon the inner spirit. A wife should attract or please her husband not simply by externals but by the inner spirit. Peter cites Sarah's attitude toward Abraham as an example.

Then in verse 7, he turns to the Christian husband. He should honor or be considerate toward his wife. "Weaker vessel" does not refer to character or intellect, but to physical strength. The husband should use his greater strength to protect, not abuse his wife. Wife-beaters are an abomination to God and right-thinking people.

To both husband and wife, Peter says that they are the recipients of God's grace. So they should live in peace that their prayers "be not hindered." This means not to be cut in on or short-circuited. Fighting companions will hardly pray together. It is ever true that the family that prays together will stay together. In an age where there are so many broken homes, these words of Peter are most timely.