

Baptist and Reflector

Vol. 147/No. 7/February 18, 1981

News journal of Tennessee Baptist Convention

Radio-TV votes to buy satellite transponder

FORT WORTH, Tex. (BP) — Trustees of the Southern Baptist Radio and Television Commission took action on plans to establish a 100-station low-powered television network during their meeting here Feb. 11-12.

Jimmy R. Allen, commission president, told trustees that applications for 100 stations have been filed with the Federal Communications Commission and asked the commission to approve purchase of a transponder when funds are available.

The transponder, to be purchased as soon as the \$5-million necessary for the first year of operation is secured, would send television signals via satellite to feed programming to the network, cable systems, and to churches with satellite receiving equipment.

Allen said the commission is in discussion with a number of sources concerning use of satellites, including Western Union, which will launch its Westar V satellite in September 1982.

In other action, trustees heard a progress report for the establishment of a center for communications studies, elected new officers, and learned of four television programs being developed by the commission.

The center for communications study, a joint venture of Southwestern Baptist Theological Seminary and Radio and Television Commission, will be launched at the National Conference of Broadcast Ministries, which will also be sponsored by both SBC agencies. The center will offer graduate degrees in religious communication.

Television evangelist Robert Schuller will be one of several major speakers at the conference to be held in Fort Worth April 27-29. Other speakers include Anne

P. Jones of Washington, D.C., a member of the Federal Communications Commission, and Harry Hollis, Nashville, director of family and moral concerns for the SBC Christian Life Commission.

Directors elected Tommy Joe Payne of Greenville, N.C. as chairman, succeeding Fred W. Issacs of Cosby, Tenn.

Allen described four new programs under development. They are "Sportsight," "The Sunshine Factory," a direct preaching presentation, and a newsmagazine program.

Filming was scheduled Feb. 17 for "Sportsight," a pilot sports program hosted by Evangelist Bill Glass. The pilot features "Mean Joe" Greene of the Pittsburgh Steelers, Craig Morton, quarterback of the Denver Broncos, and Gary Bender, CBS sports announcer.

Production on "The Sunshine Factory," a half-hour children's show developed by Mike Meece, will be March 20-21, Allen said. "Leaders in children's programming who have viewed earlier tapings have passed the program's content with flying colors," he said.

No production dates have been set for the other two projects. The direct preaching program probably would feature a preacher and soloist from various churches around the nation, and the newsmagazine would be similar to the successful "PM Magazine" approach.

Allen told trustees he would like to have all four programs ready for distribution to broadcasters by the fall of 1981, when stations make program decisions for the season.



Rogers



Easterling



MacIntyre

Rogers, MacIntyre featured during youth conference

Adrian Rogers, pastor of Bellevue Baptist Church, Memphis and a former president of the Southern Baptist Convention, will be the featured speaker at the 1981 State Youth Evangelism Conference, March 6-7.

Also featured on the program will be George MacIntyre, head football coach at Vanderbilt University, Nashville; David Meece, popular Christian singer from Lawton, Okla.; and Ray Easterling, defensive back for the Atlanta Falcons.

About 30,000 Tennessee Baptist young people are expected to attend the annual event which will be held at Vanderbilt Memorial Gymnasium.

Rogers, pastor of the 11,000-member Memphis church since 1971, will speak at each session of the conference. He has been widely used throughout the Southern Baptist Convention as an evangelist and conference speaker.

A college coach since 1964, MacIntyre accepted his present post in 1979.

Previously, he was coach at the University of Tennessee at Martin.



Meece

Meece, a concert artist who performs 250 concerts a year, has released his fourth record album, "Are You Ready?" He will provide the special music for the conference.

Several Baptist young people will also participate, leading in prayer and giving testimonies.

Youth from west and middle Tennessee (except Nashville) have been asked to attend the 4-6 p.m. Friday session, according to Malcolm McDow, Tennessee Baptist director of evangelism. A second session that night, from 8-10 p.m., will be for east Tennessee and Nashville young people.

On Saturday morning, west and middle Tennessee youth groups (except Nashville) are encouraged to attend the major session from 9:30-11 a.m. East Tennessee and Nashville groups will attend an identical session from 1:30-3 p.m.

Personal witnessing conferences will be held Saturday morning from 9:30-11 a.m. and that afternoon from 1:30-3 p.m. Pastors, ministers of music and youth, and young people from Tennessee Baptist churches will lead these sessions, which will be held at various Nashville-area churches.

Commission presents

Abe Lincoln Awards

FORT WORTH, Tex. (BP) — Emory Bundy, director of public affairs for KING-TV, Seattle, and George Nicholaw, vice-president and general manager of KNX-FM, Los Angeles, have received top honors in the 1981 Abe Lincoln Awards competition from the Southern Baptist Radio and Television Commission.

The Abe Lincoln Awards — one in television and one in radio — are given for outstanding community service programming and projects.

Chastain resigns BSSB position

NASHVILLE (BP) — Wayne H. Chastain has resigned as director of the management services division of the Southern Baptist Sunday School Board effective Feb. 9, 1981.

James W. Clark, executive vice-president of the Sunday School Board, indicated that Chastain's outside business activities interfered with his function as director of the management services division. Clark will serve as director for a short time until an interim director can be named.

Chastain began work for the Sunday School Board in 1958 as director of Camp Ridgecrest (N.C.) for Boys, where he stayed until 1964, when he moved to Nashville as a consultant in management services. He became assistant to the director of the management services division in 1966 and was named director in 1968.

SBC '82

New Orleans blitz planned

NEW ORLEANS (BP) — If a determined group has its way, messengers to the 1982 Southern Baptist Convention in New Orleans will be able to do something more than talk about Bold Mission Thrust.

Plans are underway for a massive witnessing effort to the city of New Orleans on Wednesday afternoon of the convention.

Ron Herrod, chairman of evangelism for the Baptist Association of New Orleans, said that a committee has already been formed to spearhead the effort, and that some Southern Baptist Convention leadership had already given their support.

During the recent state evangelism conference in Alexandria, Herrod, who is also pastor of Kenner First Baptist Church, met with state and national evangelism leaders.

Herrod said that he hoped to "saturate the city of New Orleans in a single afternoon with the gospel materials to help people understand Baptists and take something of a mini-survey."

"We want to go to every home primarily in the inner city and give a verbal witness or leave a written witness — plus tell the story of Baptist work in New Orleans," he said.

Herrod hopes to enlist 500 local lay persons for the project, with another 500 from across Louisiana and 1,000 more from the convention.

Herrod said he would present a resolution at the 1981 convention in Los Angeles to gain official support. He said SBC Bailey Smith has written him pledging enthusiastic support.

HMB fills evangelism post, names Tenn. missionaries

ATLANTA (BP)—Southern Baptist Home Mission Board directors elected a new associate director of personal evangelism and appointed 65 persons to mission service during their February meeting.

Douglas Philip Metzger of Willingboro, N.J., was named to fill the evangelism post which was created by

the directors last October.

Metzger has been pastor of Delaware Valley Baptist Church in Willingboro since 1977. Previously, he was pastor of First Baptist Church, East Stroudsburg, Pa., and an officer in the U.S. Navy. He is a graduate of the U.S. Naval Academy, Annapolis, Md., and Southwestern Baptist Theological Seminary, Fort Worth, Tex.

The missions appointments included two missionaries, 15 missionary associates, six mission pastor interns, 12 persons approved for language pastoral assistance, and 30 persons granted church pastoral assistance.

Two of the missionary associates have connections in Tennessee. Mr. and Mrs. Fuad Shorosh of Cleveland will live in eastern Tennessee where he will be a catalytic language missionary in Chattanooga and Knoxville.

Shorosh was pastor of Covenant Baptist Church, Cleveland, before becoming minister to the Arabs for the Hamilton County Baptist Association in 1980. Before coming to the United States, Shorosh was manager and preacher at the Baptist Book Store in Jerusalem, Jordan. A graduate of Beirut Baptist School and the Arab Baptist Theological Seminary in Beirut, Lebanon, he also has been a pastor in Lebanon.

In other business, Mission Service Corps coordinator David Bunch told the directors there are 269 MSC volunteers currently serving on home mission fields.

He said about 524 MSC volunteers have been assigned to date to serve in the United States and overseas, adding that 80 percent of all applicants have been assigned to places of service.



SUNDAY SCHOOL GROWTH — Ho Kil Kahng (left), pastor of the Nashville Korean congregation, a mission of Belmont Heights Baptist Church, and Peter Kung, language mission consultant, Sunday School Board, participated in a Sunday School growth seminar at the board. Kung teaches a Chinese Sunday School class at Belmont Heights.

SBC projections prove accurate

NASHVILLE (BP)—Final statistics confirm across-the-board gains projected in December for Southern Baptists in 1980 and some key programs show even bigger increases.

All nine of the projected key statistical areas had increases over the previous year, as predicted by the research services department of the Baptist Sunday School Board. Programs in which actual gains were higher than predicted are Sunday School, church training, church music, Brotherhood, and mission expenditures. Smaller increases were registered in baptisms and church membership. Increases in Woman's Missionary Union enrollment and total receipts were slightly smaller than predicted.

Baptisms in the Southern Baptist Convention recorded an actual gain of 61,004, or 16.5 percent, to a total of 429,742. The percentage projection was on target, with the total off by only 162. This confirms the biggest percentage gain since 1945 and the largest numerical increase ever.

Membership in Southern Baptist churches gained 227,735, or 1.7 percent, making the total membership more than 13.6-million.

The final report shows Sunday School enrollment up last year by 115,445, or 1.6 percent, which is more than 20,000 higher than the December projection. Ongoing enrollment for Sunday School, the largest SBC program, now stands at 7,433,405.

Brotherhood enrollment had the largest percentage gain of any program over last year, with an increase of 5.6 percent, or 26,351, the largest since 1971. Total enrollment for Brotherhood is now 495,666.

Enrollment for church training in the final report showed an increase of 43,593, or 2.5 percent, bringing the total to more than 1.79-million.

Church music enrollment gained 1,500 more than the projection, making the total more than 1.5-million. The actual gain for 1980 is 61,623, or 4.2 percent.

Enrollment in Woman's Missionary Union for 1980 was up by more than 13,000, or 1.2 percent, to a total of 1.1-million.

Associations sponsor seminar for pastors

Six Baptist associations of the northeastern region of Tennessee are jointly sponsoring a personal development seminar for pastors, Feb. 26, at Gibson County Baptist Mission Center, Trenton.

The seminar, led by Charles Hancock, director of personnel development at the Southern Baptist Home Mission Board, will begin at 1:30 p.m. and adjourn at 8:30 p.m. Dinner will be provided by the missions department of the Tennessee Baptist Convention.

The associations sponsoring the seminar are Beulah, Carroll-Benton, Dyer, Gibson County, Weakley County, and Western District.

Missionaries detained briefly in two east African countries

RICHMOND, Va. (BP)—A Southern Baptist missionary family in Ethiopia and a Theological Education by Extension (TEE) team in Tanzania were detained briefly by government authorities in early February.

Lynn and Suzanne Groce of Missouri and Florida, their three children, and three Ethiopians with them were detained in the Minjir district east of their home in Addis Ababa, Ethiopia, after they entered a vacant mission house without clear permission to do so. They were released the next day.

In Tanzania, five missionaries and a Tanzanian Baptist were surrounded Feb. 11 by 25 Tanzanian soldiers when they went to an airstrip near Masasi to return to Dar es Salaam after teaching TEE courses for several days. They were released four or five hours later.

Groce said their arrest stemmed from a misunderstanding because the area they were visiting straddles two districts. They had visited the Shenkora district three times in the previous month to plan water development projects there, and the district administrator had suggested they stay in the mission-owned house.

But when the Groces and helpers returned to prepare the house for occupation by a missionary family, that official was out and a lesser official did not feel they had clear permission to enter the house across the district line.

No charges were placed against the Groces and they feel the incident may result in their receiving clear permission to move freely in both districts, thus aiding their work. Groce called the

detention an inconvenience. The entire family spent two days in their car and the night between slept on the jail floor.

The Tanzania team was preparing to leave the Masasi area early Feb. 11 when five armed soldiers approached and interrogated them. Soon joined by 20 other armed soldiers, the five said they were conducting a security check and after several hours allowed the missionaries to go into Masasi.

There Larry Thomas of Texas, area missionary in Lindi who had set up the TEE program, called his wife in Lindi, who called Marty Akin, wife of Cordell Akin of Indiana, the pilot.

In Dar es Salaam Mrs. Akin called U.S. Embassy officials who contacted the Tanzanian government. Within an hour after Thomas placed his call, the men were released by government order.

Davis Saunders, the foreign Mission Board's director for eastern and southern Africa, says the incident happened because of overzealous army people in southern Tanzania and that the embassy and the Tanzanian government both were most cooperative in obtaining the men's release.

Other missionaries detained were Charles Bedenbaugh of South Carolina, a theological faculty member at the Baptist Seminary of East Africa, Arusha, Tanzania; Billy Oliver of Texas, an agricultural faculty member at the seminary; and Wayne Brown of Virginia, church development advisor in Moshi. Tanzanian Edward Mwajande, also a seminary professor, was also detained.

Baptist hunger consultant decries Reagan budget cuts

ARKADELPHIA, Ark. (BP)—Protesting proposed federal budget cuts by the Reagan administration, the Southern Baptist Home Mission Board's domestic hunger consultant charged that the proposed cuts would hurt the poor and needy in America the most.

Nathan Porter, named last December as the Atlanta-based board's first domestic hunger consultant, said the proposed budget cuts raise a major question on the primary values and priorities

of the nation.

"Will we as a nation place our major emphasis and support on the military and national defense, or on the social needs of the population in general?" Porter asked.

He pointed out that there has been no hint of any reduction in military spending, but rather there have been proposals to increase budget allocations to the national defense.

"Services to the people who have basic human needs are the target of major program reductions," Porter said in a statement issued to Baptist Press.

Although Porter expressed appreciation for the Reagan administration's decision to exempt seven social service agencies from budget cuts, he said these seven agencies were more on the fringe of the program that significantly helped the poor and hungry.

Porter said the decision could be a sign that the administration is responding to criticism that the poor are most likely to be hurt.

He expressed special concern for proposed budget cuts in the food stamp program which he felt gives the victims of domestic hunger the greatest help and support.

He decried possible budget cuts aimed at federal programs and subsidies to Americans in urban centers, farmers, the elderly, those in education, the sick, the poor, the unemployed, those who are dependent on public transportation and sources of energy, and many others.

"It appears that we as a nation are saying to them, 'You are not very important after all,'" Porter charged.

"We cannot abandon our responsibilities to be our brother's helper in his time of need. Social programs are an embodiment of our basic ideals and the dignity and value of human life."

Now, more than ever, he suggested, is the time for churches, religious bodies, and denominations to focus on the plight of the poor and the disadvantaged.

Porter urged religious leaders to "take a hard look at our church and denominational budgets and at the work in which we are engaged."

"Our values and priorities must place those who through social injustice and circumstance are facing despair in the ugly arena of poverty, isolation, loneliness, and loss of hope."

FMB says 'no ransom' in event of kidnapping

RICHMOND, Va. (BP) — The Southern Baptist Foreign Mission Board said Feb. 10 that it would not pay ransom money or yield to demands of anyone who would take one of its people hostage.

The statement was made in wake of the recent kidnapping of an American staff member related to Wycliffe Bible translation work in Colombia.

While reaffirming its full backing to missionaries serving in crisis areas, the board made it clear this backing could not include yielding to ransom or other demands.

The Southern Baptist board, the largest Protestant missionary-sending

organization in the world, has 3,057 missionaries in 94 countries. A number of these are nations in political upheaval.

The statement recognized that missionaries, board, or staff members may face some risk of being taken hostage. These individuals and their families should understand that "no ransom or yielding to other demands can be provided to obtain their release," the board said.

To do so, the statement continued, would "raise serious questions regarding our theology, our mission concepts, and our stewardship. It would place every other member of our missionary

family in immediate jeopardy."

The statement added: "We pledge ourselves to every effort in prayer and all other appropriate means to obtain the release of the one taken hostage if this event ever occurs among us."

The board reaffirmed its position of allowing missionaries serving in dangerous areas to make their own decisions on leaving.

Unnecessary risks are discouraged the statement said, but "there are times when serving as a missionary involves danger. The use of normal channels of decision making concerning leaving danger areas is desirable but missions and/or missionaries have authority to leave without prior consultation when circumstances warrant."

In recent years, missionaries have left countries like Nicaragua when conditions became so turbulent that to remain would endanger not only their own lives but also the lives of Baptists with whom they work.

But in Nicaragua and in some other instances, the missionaries have been able to return and resume their work as conditions stabilized.

At least nine Southern Baptist missionaries have met violent deaths in the 135-year history of the Foreign Mission Board. The first Southern Baptist missionary to Mexico, James Westrupp, was slain by religious fanatics or Indian ban-

dits a few weeks after his arrival in the 1800s. The latest was Archie Dunaway Jr., killed by guerrillas at Sanyati, Rhodesia (now Zimbabwe), in June 1978.

A number of missionaries were imprisoned or detained as prisoners of war during World War II, and a few missionaries have been held captive for brief periods in recent years but not for ransom or other demands.

The recent kidnapping in Colombia occurred Jan. 19 as guerrillas broke into a house in Bogota and kidnapped Chester (Tip) Bitterman, an American linguist employed by the Summer Institute of Linguistics, the overseas branch of the Wycliffe Bible Translators.

The April 1980 movement, a leftist guerrilla group also known as the M-19, demanded that the linguistics institute cease operations in Colombia. As conditions for Bitterman's release, it also asked that its communiqués be published in leading American, European, and Latin American newspapers. The American missionary group refused to meet the demands, but Bitterman as of Feb. 10 was still being held captive.

Foreign Mission Board President R. Keith Parks said there is "no safe place" in today's world. But he added that faced with Christ's command to make disciples of all nations, "We can't afford to wait until it's safe to preach the gospel."

Foreign Mission Board reports \$100-million year

RICHMOND, Va. (BP) — While deciding which projects to fund with the nearly \$2-million previously earmarked to pay 1979 and 1980 federal income tax, the Southern Baptist Foreign Mission Board learned that 1980 was the first year total income exceeded \$100-million.

"It was an unusual year," said Treasurer Carl Johnson as he reported a total income of \$102,883,798 at the board's Feb. 10 meeting. "I wish we could count on some of these same receipts every year." Miscellaneous income, which included several unusually large bequests, totaled more than \$17-million, up more than \$9-million over 1979. Total receipts exceeded 1979 by nearly \$20-million.

Congress' vote in December to restore the \$20,000 exclusion, revoked by the Foreign Earned Income Act of 1978, freed up \$1.7-million which had been set aside for taxes. About \$300,000 went to pay taxes of missionaries on furlough or in nine developed countries for which the exclusion does not apply.

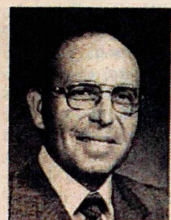
The board appropriated \$730,000 of the former tax money to upgrade missionary fringe benefits such as retirement transition, furlough transportation allowance, and Margaret Fund scholarships for missionary children.

The remaining \$970,000 will be used for project and/or capital allocations as requested by area directors. Some of the projects under consideration for the money include the purchase of automobiles needed for mission travel, special evangelistic projects in several countries, communications facilities and production, and seminary training programs.

Other financial reports showed that January receipts of the Lottie Moon Christmas Offering for foreign missions totaled about \$500,000 over receipts in January 1980, although Johnson warned that it is too early to draw any conclusions.

He also reported that the Foreign Mission Board's proposed share of 1981-82 Cooperative Program dollars, to be recommended by the program and budget subcommittee of the SBC Executive Committee, is up "substantially." If the recommendation is approved at the Feb. 16-18 meeting of the Executive Committee, the board will receive 49 percent of the basic operating budget, up from 48.4 percent. Also, the board is slated to receive 50 percent of the challenge portion of the budget, compared with 40 percent last year.

In other action, four missionaries were named to new staff positions or overseas posts. Benjamin Bedford was named associate to the area director for eastern South America with responsibility for the Spanish-speaking countries in the



Bedford



Davis

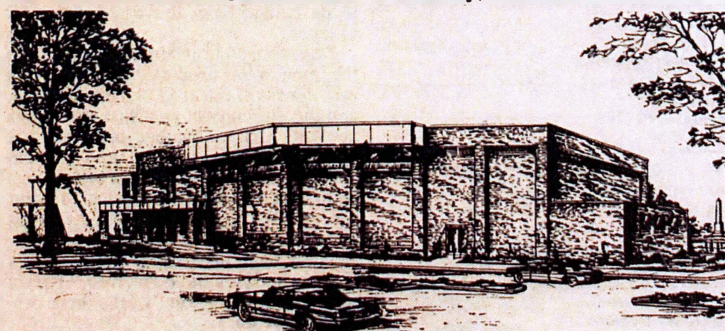
area. Robert Davis was named consultant for evangelism and church growth for Asia. Emeritus missionary Catherine Walker will become special assistant to the president with responsibility for intercessory prayer. Judy Robertson filled the position of administrative assistant for George Hays, director for East Asia.

Bedford will act as a liaison between other missionaries and the Foreign Mission Board. He will work out of Buenos Aires, Argentina. A missionary to Argentina since 1951, he has been professor of Bible at the International Baptist Theological Seminary, Buenos Aires, since 1978.

Davis will assist missionaries and nationals in on-the-field mission planning. He is the fourth and final regional consultant to be named to work under the board's evangelism consultant, Ervin Hasty. Davis has been pastor of an English-language church in Hong Kong since 1978.

Miss Walker, an emeritus missionary who served 34 years in China and Indonesia, will be responsible for coordinating intercessory prayer concerns among staff, active and emeritus missionaries, and with other convention boards and agencies.

Miss Robertson had been a missionary student worker in Taiwan since 1974 before assuming her new position Feb. 1.



TUSCULUM HILLS — Nashville's Tusculum Hills Baptist Church will occupy its new \$600,000 worship center Feb. 22. The sanctuary will seat about 1,000 people and the facility includes a musical suite, restrooms, balcony, and foyer. Doug Westmoreland is pastor.

FMB enters new areas, withdraws from others; count remains at 94

RICHMOND, Va. (BP) — The transfer of a missionary couple to Equatorial Guinea and approval of a recommendation that the Southern Baptist Foreign Mission Board station missionaries in Egypt mark several recent changes in Southern Baptist foreign mission fields.

Although the number of countries and territories to which the Foreign Mission Board assigns missionaries has remained at 94 for many months, the actual countries on the list have changed and the board anticipates adding Equatorial Guinea April 1.

The addition of Egypt and the Turks and Caicos Islands in the Caribbean kept the number at 94 when the board discontinued work in St. Martin and Angola recently.

Jess and Peggy Thompson, missionaries to Ghana, will be transferred to Equatorial Guinea April 1 to start agricultural evangelism work there. Because the Thompsons must attend Spanish language school before going to the country, the board will continue seek-

ing a Spanish-speaking couple who can begin work there sooner, said John E. Mills, director for West Africa.

Spanish Baptists, who agreed last fall to form a joint mission in Equatorial Guinea with Southern Baptists, have not yet assigned any personnel, said Mills. Brazilian and Mexican Baptists, he said, also have expressed interest in joining the mission.

In its February meeting, the Foreign Mission Board approved a recommendation that it make every effort to establish a missionary presence in Egypt. Mike and Lyn Edens were appointed in December for him to serve as a fraternal representative to Egyptian Baptists.

Baptists began work in Egypt in 1931 and now have eight congregations with 250 members. The Foreign Mission Board has had fraternal representatives working with Egyptian Baptists for many years, but none has lived in the country as the Edens plan to do.

In other recent changes, the Foreign Mission Board added Turks and Caicos Islands as a foreign mission field when it transferred Ed and Joyce Perimon from Trinidad Jan. 1. The board has provided volunteer help to Baptists on the islands in the past. The Perimons, who are on furlough, won't arrive on the field until the end of the year.

The board dropped another Caribbean island, St. Martin, after Missionaries Jim and Rose Marie Banks lived on the island for several months, but were unable to get permits to stay there.

The board also dropped Angola Jan. 1 after Missionaries Curtis and Betty Dixon transferred to Portugal. Southern Baptist missionaries left Angola in 1975 because of strife following independence, but the Dixons have continued to supply literature for Portugal and to seek permission to re-enter Angola.

Letters to the Editor...

Letters on any religion-related subject are welcomed. Letters of over 300 words will not be used. Other letters may be shortened at the discretion of the editor. No unsigned letters will be printed, but writer's name will be withheld for sufficient reason. Letters must contain complete address.

Bobbie's influence

(Editor's Note: Let me thank many of you who have written concerning the tragic death of Bobbie Durham and my Jan. 28 "A personal observation." I have not chosen to print all of these, but I did want to share this letter. There is no greater thrill to a writer than to learn that something written has led readers to respond in a positive, Christian way.)

Dear editor:

I wanted to tell you what Bobbie Durham's writing meant to one family—the Kham Siharaths, formerly of Laos, now living in Chattanooga.

In your Sept. 5, 1979, issue, Bobbie wrote an article describing the plight of Southeast Asian refugees and chiding Tennessee Baptists for being so slow to respond.

My heart was so touched by this article that I distributed copies at our next Baptist Young Women's meeting and sent a copy to my pastor. The BYWs voted to try to get Brainerd Baptist Church to sponsor a family.

We found that other groups in the church were interested also, and BYWs joined with representatives of other groups to form a typical Baptist "committee."

In May 1980 the Siharaths arrived after spending one and one-half years in a Thai refugee camp. They are a lovely family of eight who have been a blessing to everyone that has met and worked with them. They attend Sunday School and church on Sunday mornings and go to church services in their own language on Sunday nights.

If it had not been for Bobbie's article, our church and the Siharaths might never have found one another. And maybe because of it, Bobbie and the Siharaths will meet in heaven some day.

Teena Andrews
212 Sweetbriar Ave.
Chattanooga, TN 37411

'Oppose your criticism'

Dear editor:

My family and I oppose your criticism of the Moral Majority in your editorial in the Oct. 29 issue of Baptist and Reflector. We resent the derogatory remarks

made toward these preachers who are only trying to bring back America to the moral land it once was. Many Baptists, myself included, support this conservative moral movement. At least now we know that you do not.

Paul Yearout
P. O. Box 86
Maryville, TN 37801

I have reread my Oct. 29 editorial and can find nothing derogatory about Jerry Falwell (who was not mentioned) or "preachers" (the word was not used). Concerning the Moral Majority, I wrote, "We are pleased with any activity that would cause Christians to become more concerned with politics, but we question the wisdom of openly endorsing candidates." I believe that as Americans, as Christians, and as Baptists, we should study the record and proposals of all candidates and vote our personal convictions under God's guidance. (editor)

Give Reagan time

Dear editor:

In your article "Reagan disappoints 'new right' leaders" (Feb. 4), conservative politicians and church leaders are already expressing dissatisfaction over some of his appointments.

Frankly, I couldn't care less what political groups say in public about the president, but when church leaders began to attack him, it becomes a different matter.

President Reagan has only been in office a short time and the last thing he needs is church leaders attacking him.

Perhaps if they would have more prayer meetings instead of a seminar, we would see changes in our country and the direction it's been taking.

Dennis Vest
287 Jefferson
Ripley, TN 38063

Unfortunately, some church leaders ARE a political group. I join you in the hope that all Americans will give our new president patient understanding as he attempts to deal with the many problems facing our nation. (editor)

CIRCULATION THIS ISSUE — 81,430

Alvin C. Shackelford, Editor

Charlie Warren
Associate Editor

**Baptist
and
Reflector**

Martha Buster
Production Assistant

Euro Lannom, Advertising, Subscriptions

Established 1835
Post Office Box 347, Brentwood TN 37027
Telephone: (615) 373-2255

Published weekly except New Year's week by the Executive Board of the Tennessee Baptist Convention at Brentwood, Tennessee 37027. Subscription prices: \$4.30 individual; clubs of ten or more, \$4.00; church budget 6.5¢ per family per week when sent to 50 percent or more of church homes. Second class postage paid at Brentwood, Tennessee, and at additional mailing office.

Space forbids printing of resolutions and obituaries. Advertising rates on request.
Member of Baptist Press (BP) news service of the Southern Baptist Convention.

News-Journal of Tennessee Baptist Convention
Tom Madden, Executive Secretary-Treasurer

BOARD OF DIRECTORS: Charles D. Earl, chairman; Roy Miller, vice-chairman; Harold Allen, Raymond Boston, Stanley Brumfield, E. E. Carrier, C. Ed Harris, James Hatley, Fred Kendall II, John Laido, Murphy Martin, Rudy Newby, Donald Pharris, Dennis Pulley, Jerry Sanger, Fred Steelman, Matt Tomlin, and Osta Underwood.

Upper Volta volunteer shares first impressions

Pat Farris of Tullahoma, one of Tennessee's first volunteers to go to Upper Volta to participate in the Tennessee Baptist Hunger and Relief Project, admits to frustrations and hardships during the month he was there, but he wants to go again.

Farris is not a glutton for punishment. He did not enjoy suffering in the sweltering 105-degree heat. The crude accommodations were less than luxurious, he admits. Also, getting phase one of the project underway did not go as smoothly as the men had hoped it would.

Nevertheless, Farris returned home feeling good about what he and the other men had done. He feels the project and its ultimate results are well worth putting up with a few discomforts and frustrations.

Farris and six other Tennesseans in the first team were to begin constructing a dormitory to house volunteers who will participate later. Later teams will construct a dam and lake to store and utilize available water, set up health clinics, teach literacy, teach soil conservation and improved farming methods, help improve the livestock in the area, introduce fish farming, build schools and church buildings, and teach hygiene and personal health.

The project is a joint effort by Tennessee Baptists and the Southern Baptist Foreign Mission Board to help relieve poverty and hunger problems of Africans in the Sanwabo area of Upper Volta.

Returning to Tennessee on Feb. 13, Farris stopped by the Tennessee Baptist Convention building in Brentwood to update Carroll Owen, director of the convention ministries division and coordinator of the project, concerning the progress the team had made.

When he left Upper Volta on Feb. 11, Farris said the foundation for the dormitory was complete, all of the concrete blocks had been made (by the men themselves), and half of the blocks had been laid. The steel trusses to support the roof also had been purchased. Farris explained that wood could not be used on the building due to the termite activity in the area. The building will include seven small rooms and a kitchen.

Until it is complete, the volunteers are sleeping in straw-mat housing built by the local Africans and cooking in a mud-block cookhouse, also built by the people. They used an ice chest for refrigeration and had constructed their own crude, gravity-powered shower out of a barrel. The shower water was nice and warm, Farris said, due to Upper Volta's intense solar heat.

A well that was to be used for their water supply had caved in, so water had to be hauled from the wells of nearby villages.

Everything seemed to take longer than the men were used to because of the remoteness of the area, the intense heat, and the difficulty of purchasing supplies in west Africa. Another obstacle that slowed them down was the time it took to teach the African people how to do things themselves. Farris was quick to point out, however, that the Tennesseans learned a lot from the Africans as well.

"They have been there for thousands of years and they have survived," Farris said. "They know what works there better than we do."

He had several suggestions concerning the project. He believes the cost of the project can be cut significantly by sending certain food supplies with each volunteer who goes. The price of coffee,

mayonnaise, mustard, flour, and other staples can run three to five times higher in Upper Volta than in the United States. Besides, he quipped, all the directions on the packages are in French. He said if such supplies were shipped in, they would be heavily taxed, but people going can carry these items with their baggage.

Also, current plans for the project call for stopping the project from May until September due to the rainy season. Farris explained that the rains do not begin until June and he believes volunteers could continue working until early June.

He also suggests volunteers who go in the future be instructed to leave their good clothes at home. He says he never took any good clothes out of his suitcase. He found his work clothes to be adequate for every situation.

"We went to church services in our work clothes and we were the best dressed people there."

To others considering volunteering to go, Farris says, "It's rough and crude and if you don't like to be outside, it's not for you. But everybody who goes will come back with a different outlook on life. You see a different side of life."

"I believe I got a lot more out of it than I contributed."

C-N enrollment rises for spring semester

JEFFERSON CITY—Despite a nationwide decrease for college students, enrollment at Carson-Newman College has continued to increase over the last eight semesters. For the spring semester, 1,588 students are enrolled compared with 1,545 at this period last year.

President J. Cordell Maddox and Jack Shannon, director of admissions, agree that the spring 1981 enrollment increase is partially due to the opening of the new music building. Since the building's recent completion, the number of music majors, band members, and private music lessons have increased.

In addition, Maddox points to the availability of financial aid and the college's broadened curriculum which now offers over 40 majors as factors contributing to enrollment expansion.

Area pastors, churches, and alumni are also active in recruiting students, according to Shannon.

New churches become priority in Singapore

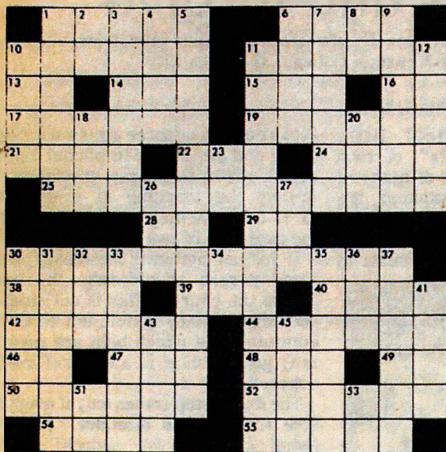
SINGAPORE—After two years of new churches, the Singapore Baptist Convention has decided to place more emphasis on planting and sustaining churches, and phase out other relatively unproductive and expensive programs.

When the urban evangelism project was begun in 1975, several programs were started to help reach Singapore through new churches. Although these programs have been beneficial, in light of the low church growth and after careful analysis, Southern Baptist missionaries in Singapore recommended and the convention agreed to phase out the book tree ministry and the correspondence course over a period of months.

Elimination of the programs is expected to cut the cost of the whole project by two-thirds, making it possible for the Singapore convention to begin financing the urban evangelism project in the near future.

Bible Puzzle

Answers on page 15.



ACROSS

- 1 Fifteen shekels (Ezek. 45:12)
6 Greek mountain
10 Present
11 Twelve (Luke 22:30)
13 Before noon: abbr.
14 King (2 Sam. 8:9)
15 Salamander-like amphibian
16 Germanium: symbol
17 Summer TV fare
19 "— with the fine flour" (Ezek. 46)
21 City (1 Chron. 6:70)
22 Burnt residue
24 Hated one (Mal. 1:3)

- 25 "until — of our Lord" (1 Tim. 6)
28 Man (1 Chron. 7:12)
29 Plural: abbr.
30 "transformed into an —" (2 Cor. 11)
38 Phone part
39 Legume
40 Hawaiian island
42 Mischievous
44 They held their peace (Job 29:10)
46 Near: abbr.
47 View
48 Old cloth measure
49 Bill of Exchange: abbr.

CRYPTOVERSE

TI EHUT OKCO TKUQUISIV NQ

GVUV UY AUZ QNHIOK HUO

Today's Cryptoverse clue: V equals R

- 50 Ordained of old (Isa. 30:33)
52 Abounded
54 "twice —" (Jude 12)
55 Surfeits

DOWN

- 1 "In a —" (1 Cor. 15:52)
2 Article
3 "of the divine —" (2 Pet. 1)
4 Harrow's rival
5 "He said, — — —" (John 9:17)
6 Heraldic border
7 Boil gently
8 Stibium: abbr.
9 Sea
10 One of five (1 Chron. 2:6)
11 "and — — —" (2 Ki. 23:5)
12 Reu's son (Gen. 11:20)
18 Salty efflorescence on the Ganges
20 Greek letter
23 Species: abbr.
26 Be sick
27 Mohammed's adopted son
30 In the meantime: L., abbr.
31 Mighty hunter (Gen. 10:9)
32 Space
33 "doth rest on —" (2 Ki. 2:15)
34 Iron: symbol
35 Stemmed drinking vessel
36 Man's nickname
37 Ancient Egyptian city
41 Employed
43 Sower's need
45 Tree genus
51 Hebrew letter
53 Pronoun

Interpretation

Love is forever

By Herschel H. Hobbs

"And now abideth faith, hope, love, these three; but the greatest of these is love" (1 Corinthians 13:13).

This is a fitting close to one of the most beautiful and beloved chapters in the Bible. It contains what is called the three Christian virtues.

Paul has not used the word "love"

since verse 8a. But the intervening discussion enlarges upon the fact that "love never fails." Now he compares it with faith and hope. All three abide in comparison with the temporal nature of other spiritual gifts. But he goes even beyond earthly life to show that only love is forever.

Faith is the ability to accept the reality of that which we cannot see. Hope is the earnest expectation to the point of assurance that we will experience the reality of that in which we believe. But there comes a time when our faith is swallowed up in sight, and our hope in realization or experience.

For instance, from childhood I have had faith that there is a place called Jerusalem. And I hoped that some day I would go there. Now that I have been there I no longer have faith regarding it, for I have seen it. No longer do I hope that some day I will go there. For hope has given way to realization. But as long as I live I will go on loving that city and all that for which it stands.

In like fashion from the time since I first heard of Him I had faith that there is one named Jesus, who through faith in Him I have hope (assurance) that I will be in heaven with Him. When I arrive there, my faith will become sight as I see Him face to face. My hope will have given place to full realization. But through all eternity I will be loved by Him and go on loving Him unto the ages of the ages. Faith and hope abide in this life. But love is forever! Why? Because it is the very nature of God (1 John 4:8).

Devotional

A pearl of value

By Dwayne B. Zimmer

A pearl is produced by the oyster when a foreign substance such as a grain of sand or a tiny parasite enters the oyster's shell.

The oyster produces a special substance called nacre that lines the insides of their shells. The tiny grain of rough sand is gradually covered by successive circular layers of nacre until it is completely enclosed in the beautiful, lustrous, and iridescent coating, forming the valuable pearl.

Life is filled with little irritations. How we react to these determines how they affect us. The oyster reacts in a positive way and creates a beautiful pearl.

Most people react in negative ways that produce ulcers, high blood pressure, headaches, muscle tension, and even hatred and violence.

Occasionally, through concentration, advance preparation, self-control, and a lot of prayer, a person is able to react to irritations in positive ways and produce unusual and unexpected results.

To illustrate: Mr. A was constantly criticizing and saying "picky" little things to and about Mr. B. At first, Mr. B fought back but this only increased the irritations.

Eventually, however, Mr. B decided to pray for Mr. A to try to discover the motive behind his actions and to ignore the irritating remarks. It was difficult and took time, but it worked. He discovered Mr. A's motive was a desire to attack Mr. B's best friend and co-worker, but he had been unable to do so directly.

Once this was understood, the irritations failed to produce the previous reactions and they gradually ceased. Prayer helped replace hatred with love and friendship. Several months later, tragedy came into the life of Mr. B. The first person to respond was Mr. A. He had become a pearl!

"Love your enemies, bless them that curse you; do good to them that hate you, and pray for them that despitefully use you and persecute you" (Matt. 5:44).

Zimmer is minister of education of Woodmont Baptist Church, Nashville.



Zimmer

Ethicist examines inflation's effect

NASHVILLE (BP) — Inflation — which threatens the affluent and impoverishes the elderly — will continue to be the uppermost issue on the minds of most Americans in 1981, a Southern Baptist ethics professor says.

The effects of inflation will be pervasive throughout society, writes Thomas A. Bland, professor of Christian ethics and sociology at Southeastern Baptist Theological Seminary in Wake Forest, N.C.

"The consequences of inflation can be seen not only in its threats to affluent lifestyles, but especially in its cruel impoverishment of the elderly and others on fixed incomes and its untold hardship on the poor. Many such people in our society are helpless to deal with inflation," Bland wrote in a resource paper prepared for the Southern Baptist Christian Life Commission, the moral concerns agency of the 13.6-million-member denomination.

He called on individuals, churches, and denominational agencies to examine levels of giving and spending, saying that "one of the most compelling challenges to the Christian community in the United States today is the adoption of a simpler lifestyle."

Bland said requirements on churches and denominational agencies call for careful spending.

Allen Organ for Sale

Allen Computer Organ, System 100, 32 pedal, Like New. Great for church or chapel. \$4,500

Call Mr. or Mrs. Sampson
615-331-9965
Evenings or Weekend

Personal perspective

BY TOM MADDEN
TBC executive secretary

Some of our Home Mission Board missionaries are classified as "catalytic missionaries." These are usually missionaries who have the responsibility of working with ethnic groups. I asked why they were called "catalytic missionaries" and was told they were to bring about action more quickly.

That is logical, I thought. For example, if we have knowledge of several hundred residents of a particular ethnic identification, but we do not have a church that can preach the gospel to them in their own language, a "catalytic missionary" is asked to serve. His first task is to discover those who would like to have a corporate worship service and to enlist a local church to respond to this opportunity. This might eventually happen without a missionary, but it is hoped that it will be brought about much quicker with one.

It follows then, that all of us should be classified as "catalytic missionaries." God wants His kingdom to come on earth. If we can be used of God to usher it in a bit quicker, then we are "catalytic people."

Even so, come quickly, Lord Jesus!



Madden

FIBERGLASS

BAPTISTRIES / STEEPLES

LARGE SELECTION - FACTORY DIRECT

FOR FREE CATALOGS

CALL TOLL FREE

1-800-527-8438

OR WRITE



SUPERIOR FIBERGLASS, INC.

BOX 1308 JACKSONVILLE, TX 75766

To change or correct your address

Attach in this space your address label found on the front page of your latest copy of the BAPTIST AND REFLECTOR. Please give your new address below—including your zip code. When changing address, please give two weeks notice. Please write, do not call address changes to insure accuracy.

All correspondence relating to your subscription

should be accompanied by our address label. If you are receiving duplicate copies, please send both labels.

Address all requests to:

BAPTIST AND REFLECTOR

Post Office Box 347

Brentwood, Tennessee 37027

Name _____ Please Print

Address _____

City _____

State _____ Zip Code _____

CHURCH FURNITURE

At a price
Any Church Can Afford
Write or call

WAGONER BROS.

MFG. CO.

Tel. (501) 675-2468

Booneville, Arkansas
72927



BIBLE BOOK SERIES

Lesson for Feb. 22

Worship: women's role

By Ira Samuel Perkins, director of missions
Big Hatchie Baptist Association, Covington

Basic Passage: 1 Corinthians 11:2-16
Focal Passage: 1 Corinthians 11:2-16

Paul's praise (v. 2)

The next four lessons deal with problems in worship: women in worship, the Lord's Supper, spiritual gifts and preaching.

However, before plunging into the problems, Paul praises the congregation for two things: (1) They had faithfully supported him prayerfully, morally, and financially, and (2) they had faithfully kept the truths which he had taught them.

Proper worship (11:3-5)

What place did women have in public worship? What was considered proper dress for a Christian woman? These questions, as always, must be understood or interpreted in the context of Scripture and the customs of the first century, and then applied to our day.

No first-century woman of respectable character would ever leave home without wearing a veil, wear short hair, or talk with her husband in public. A woman who did either of these was not considered a lady.

Paul was neither a hater of women nor was he a male chauvinist. He developed a good relationship with Lydia in Philippi and probably founded the church there in her home (Acts 16:11-15). Aquilla and Priscilla were good friends and both were very active in the church at Corinth. He also had a high opinion of the faith of Eunice and Lois and their influence on Timothy (2 Tim. 1:5). These relationships must be kept in mind as we seek to understand Paul's teaching on women in worship.

The question before us concerns proper dress, not participation in worship. The argument was not whether women should participate but how they were dressed as they participated in worship. There seemed to be some women who were taking their freedom as Christians to mean they were free from the proper dress codes of the day. Their actions were creating problems within the fellowship.

The answer presented by Paul is more a matter of function than it is of position or status. Neither man nor woman was superior, but rather each was alongside the other as they worshipped God. In the Scriptures, God created man, Christ redeemed him, and once he is a Christian the Holy Spirit sustains him. Likewise in the church, there is God, then Christ, followed by man, and then woman.

Another problem was length of hair. For a first-century woman, long hair was honor, but for a man, dishonor. This was the natural custom of the day. In the

1960's, young men began to wear their hair long as a rebellion against authority. Thus, their motivation made it wrong for a Christian. A Christian does not have the authority to do as he pleases, disregarding both God and fellowman. Man never rises above the authority of God, thus his actions must be subjected to God. Freedom must always be understood as freedom under Christ, especially for a Christian. A Brazilian proverb says, "My freedom ends where your nose begins." I am free, but free in Christ, under his authority, and for the good of all men.

Paul's appeal (v. 16)

The appeal to nature is for a mode of dress that will easily distinguish men and women.

He appeals to them not to be contentious but to follow the practice of other believers in the churches of God. He continually appeals to the corporate responsibility of every member as the total witness of the church.



Perkins

County defies ruling on Ten Commandments

MADISONVILLE, Ky. (BP)—Copies of the Ten Commandments are being posted in public school classrooms in Hopkins County despite a ruling from the U.S. Supreme Court and an opinion from the Kentucky attorney general.

Last fall, the high court struck down a Kentucky law that required the decalogue to be posted in all classrooms in the state if private money was given for that purpose. Kentucky Attorney General Steve Beshear later said that meant the Ten Commandments already posted should be removed from public school classrooms.

But Patrick O'Neil, superintendent of the Hopkins County school district, has now ordered that the commandments be posted. He acted in response to a vote by the county school board.

Assistant Attorney General Robert L. Chenoweth said the state would not try to force compliance with the Supreme Court ruling. But he said the school district was now open to civil lawsuits on the matter.

Hogue elected to lead Lausanne committee

DES PLAINES, Ill. (BP)—C.B. Hogue, vice-president for evangelism for the Southern Baptist Home Mission Board, has been elected chairman of the North American Lausanne Committee.

The committee is a regional wing of a larger 50-member group of world evangelism leaders seeking to implement the objectives of the World Congress on Evangelization held in Lausanne, Switzerland, in 1975. Hogue is the first Southern Baptist named to a major office in the Lausanne follow-up committee structure. The committee does not initiate programs, but serves as a clearing-house and resource center for evangelical groups in North America.

Hogue also is serving as program chairman planning the American Festival of Evangelism, slated July 27-31, in Kansas City. More than 20,000 Christians concerned about evangelism from 120 evangelical organizations and denominations in North America are expected to attend.

UNIFORM SERIES

Lesson for Feb. 22

Love and forgive

By Ircel C. Harrison Jr., director of campus ministries
Carson-Newman College, Jefferson City

Basic Passage: Matthew 18
Focal Passages: Matthew 18:1-6, 15-22

Linus, the philosophical little character in the "Peanuts" cartoon strip, reflected the thoughts of many of us when he said, "I love mankind; it's people I can't stand!" We easily accept the theory that we should love our neighbor, but it is a different matter to put it into practice.

The two questions in this week's text indicate that the disciples of Jesus also had some problems putting theory into practice. The questions were, "Who is the greatest in the kingdom of heaven?" and "How often shall my brother sin against me, and I forgive him?" Jesus had to teach them something about personal attitude, reconciliation, and forgiveness in their relationships with others.



Harrison

The disciple and humility (18:1-6)

Jesus' disciples continued to misunderstand the nature of the kingdom; consequently, each was concerned about where he would fit into the "power structure" of the kingdom. They were thinking of it in political, rather than spiritual, terms. They boldly brought their question to Jesus.

Jesus' reply was to place a child in their midst as an example and object lesson. He warned that unless they were "converted" (v. 3) and became as little children, they would not enter into the kingdom. "Convert" means literally to "turn around." They were going in the wrong direction and needed to do an about face. Their value system was certainly not that of the kingdom.

Childlikeness is shown to be not only the measure of prominence in the kingdom but also the condition of entrance.

A child exemplifies what a citizen of the kingdom should be like. A child does not naturally push himself forward; he learns assertiveness from his environment. This attitude of humility should be the pattern for a disciple's relationship with his neighbors. The child is also both dependent and trusting, just as the disciple should be dependent on the Father and trust in Him for guidance and sustenance.

It is certainly a condemnation of our society that children learn too quickly that they must achieve in order to be accepted and that they must mistrust and beware of the intentions of others.

The disciple and reconciliation (18:15-20)

Broken relationships between people are always painful, but they may be especially destructive within the Body of Christ. This teaching of Jesus on reconciliation is free of the idea of judgment or condemnation. The chief goal here is to rebuild or clarify relationships in order to re-establish fellowship.

Jesus placed the responsibility for mending a broken relationship on the one who had been offended, recognizing that the offender would not be likely to take the initiative to correct the problem.

The first step is for the offended person to put into words the nature of the offense ("Why do I feel hurt about this?") and express that personally to the one who has committed the offense. Sometimes this is the only action necessary to restore rapport.

If this should fail, the injured party

seeks out two or three others who will go along and provide an impartial audience before whom to air the grievance. This follows the teaching of Deuteronomy 19:15 that disputes should be settled in the presence of two or three witnesses.

If further action is necessary, the injured person should take the matter before the church. This is not simply to seek disciplinary action, but so that the community of which both are members may give counsel in a spirit of love and concern.

The fourth step comes only if everything else fails. If the offender "refuses to listen even to the church" (v. 17), fellowship is broken. Stagg comments, "It is not so much that he is excluded as self-excluded." The church has not "withdrawn fellowship," it recognizes that there is unfortunately no fellowship there!

If the church is truly in touch with God, its action has already been anticipated in heaven (v. 18). In dealing with this delicate matter of broken relationships and corrective action, God's people are assured of Christ's presence and guidance (vs. 19-20).

The disciple and forgiveness (18:21-22)

Peter probably felt that he was being generous when he answered his own question by suggesting that he should forgive his brother seven times. Why, the rabbis taught that a man should only be forgiven three times! How generous could a person be?

This rabbinical teaching was based on a series of condemnations in Amos (Amos 1:3, 6, 9, 11, 13; 2:1, 4, 6) which indicated that God's forgiveness extended to three offenses, and then He punished the offender.

Instead of congratulating Peter on his forbearance, Jesus stated that he should be willing to forgive "seventy times seven" (v. 22). This is certainly a figure of speech and not an indication that Peter should keep a check list until a specific limit was reached.

The Christian should live in an attitude of forgiveness, eager to renew fellowship with another person. Forgiveness is to be an attitude, not an act. If God has forgiven us so much, surely we can forgive those who have offended us.

The church and its individual members have innumerable opportunities to exercise humility, reconciliation, and forgiveness in the world today. If we do this, we will be the servant people that our Master commanded us to be.

Tennesseans to assist in family workshop

KANSAS CITY, Mo. — Baptist Sunday School Board and Christian Life Commission representatives will lead plenary sessions and small group conferences focusing on family revival in the local church during a family ministry workshop, March 4-6, at Midwestern Baptist Theological Seminary here.

Participants from the Sunday School Board include Joe Hinkle, Harold Bergen, and Horace Kerr of the family ministry department, and Reuben Herring, editor of Home Life magazine.

They will be joined by Harry Hollis, associate executive director and director of family and special moral concerns, Christian Life Commission.

CHURCH FURNITURE

From Factory to Church
RAINSVILLE CHURCH PEW COMPANY
220 Rainbow Ave., S.W.
Rainsville, Ala. 35986
Phone (205) 638-2467 or 638-3882
We upholster existing pews

BUS FOR SALE

1970 International church bus
66-passenger. \$1,500
Call (615) 597-8204, 597-7655, 597-7089
Snow Hill Baptist Church
Route 1
Dowelltown, TN 37059

Treasurer's Report for First Quarter

January 31, 1981

Nov. 1, 1979 Nov. 1, 1980

Jan. 31, 1980 Jan. 31, 1981

Gain

Cooperative Program	\$3,394,050.51	\$3,542,830.45	\$148,779.94
Designated & Reported	2,654,292.23	2,795,398.40	141,106.17
Total	\$6,048,342.74	\$6,338,228.85	\$289,886.11

The above represents a 4.38 percent increase in Cooperative Program gifts and 5.32 percent increase in Designated and Reported gifts.

At this same time last year we had \$156,119.39 or 4.82 percent increase in Cooperative Program and \$292,236.79 or 12.37 percent increase in Designated and Reported gifts.

Lottie Moon Offering total 1-31-81 \$2,231,196.32
1-31-80 2,149,089.83

Gain \$ 82,106.49

Church	Cooperative Program	Designated	Church	Cooperative Program	Designated
ALPHA					
Centerville, First	382.00	1,714.00	Obion, First	2,464.90	5,839.25
Cross Roads	175.86	310.00	Phillippy	30.00	.00
Edgewood	63.00	150.00	Pleasant Hill #1	320.00	907.10
Fairfield	224.23	193.59	Pleasant Hill #2	467.67	1,200.00
Garrett	50.98	30.10	Reelfoot	150.00	485.00
Highland	344.64	.00	Ridgely, First	3,721.25	2,627.39
Hohenwald, First	1,199.98	362.80	Samburg	277.00	.00
Linden, First	300.00	304.00	South Fulton, First	3,156.37	201.39
Lobelville, First	23.83	59.27	Tiptonville, First	731.92	1,837.45
Maple Valley	102.62	.00	Troy, First	1,457.74	2,470.69
New Hope	110.52	.00	Union City, First	4,013.25	1,237.20
Pine Grove	127.10	59.80	Union City, Second	2,875.83	2,545.00
Piney	21.78	.00	Walnut Log	.00	25.00
Toms Creek	202.86	180.00	Williamham Memorial	215.72	.00
Wrigley	313.73	290.02	Woodland Mills, First	2,156.61	2,109.05
Total	3,643.04	3,653.58	Wynnborg	432.32	1,094.95
			Total	35,882.86	35,888.28

BEECH RIVER					
Bath Springs	906.84	300.00	Beech Park	1,003.60	1,150.37
Beacon	25.00	45.00	Bethel	.00	.00
Bear Creek	648.81	710.86	Big Emory	995.50	362.38
Bible Hill	.00	125.00	Calvary	75.00	.00
Bolens Chapel	.00	.00	Caney Ford	466.00	1,203.68
Bunches Chapel	.00	.00	Cardiff	108.42	208.42
Calvary	1,446.95	600.00	Cedar Grove	3,000.00	17,731.31
Chapel Hill	151.75	100.00	Central	1,604.45	2,277.73
Corinth	75.00	.00	Childs Memorial	761.85	562.26
Cub Creek Hall	30.00	50.00	Clax Gap	97.00	.00
Darden	.00	327.03	Clymeraville	946.50	.00
Decaturville, First	150.00	338.00	Coal Hill	249.69	344.77
Flatwoods	.00	75.00	Crab Orchard	831.00	128.00
Hinkle	.00	.00	Daysville	113.43	172.15
Hopewell	.00	.00	Deer Lodge, First	91.48	.00
Huron	21.00	.00	Dyllis	522.67	158.37
Jacks Creek	.00	.00	Eureka	1,031.65	723.00
Judson	.00	.00	Fairview	.00	110.35
Lexington, First	5,295.03	5,522.44	Kellytown	526.10	526.09
Lone Chestnut	.00	.00	Kingston, First	7,500.00	5,599.54
Luray	.00	.00	Lakeview	361.00	500.00
Mount Ararat	420.93	612.36	Laurel Bluff	143.98	50.00
Mount Gilead	305.00	1,216.77	Lee Village	393.04	227.51
Mount Zion	.00	105.25	Liberty	2,004.67	2,219.55
New Beech Grove	.00	.00	Middle Creek	3,509.38	1,332.40
New Chapel	.00	47.50	Mossy Grove	303.00	641.50
New Hope	50.00	150.00	Oakdale, First	582.00	282.00
New Prospect	67.25	255.76	Orchard View	100.00	173.05
Parsons, First	3,008.21	1,663.94	Petros	954.13	112.81
Perryville, First	86.96	.00	Pine Orchard	484.86	131.25
Pine Grove	236.11	60.00	Pine Ridge	461.94	500.00
Piney Creek	.00	.00	Piney	1,517.59	641.00
Ridge Grove	.00	.00	Piney Grove	639.66	145.18
Rock Hill	474.26	215.19	Pleasant Grove	1,418.00	1,039.98
Salem	.00	20.00	Pond Grove	595.44	345.28
Saltillo, First	100.55	.00	Riggs Chapel	205.58	54.00
Sand Ridge	812.21	1,172.30	Riverside	1,606.14	410.42
Sardis	280.00	75.00	Rockwood, First	8,144.37	30.00
Sardis Ridge	.00	.00	Rockwood, Second	.00	30.00
Scotts Hill, First	732.00	109.90	Shiloh	3,401.77	3,267.90
Southside	.00	.00	Sunbright, First	8,009.67	3,472.48
Tomlin Chapel	.00	.00	Trenton Street	1,102.09	538.00
Union	167.50	455.00	Union	10,292.74	1,718.00
Union Grove	200.00	200.00	Union Chapel	338.00	330.00
Wildersville	632.23	526.60	Walnut Hill	135.78	399.00
Total	16,323.59	15,078.90	Warburg, First	783.24	930.26
			Whites Creek	540.00	1,236.40
			Total	728.42	235.00

BEULAH					
Alamo	186.92	402.34	Ashport	545.64	212.00
Aldridge	84.60	.00	Beaver	253.00	377.50
Bethel	210.00	.00	Brighton	6,031.06	3,656.53
Broadway	17.35	.00	Charleston	1,854.00	2,170.00
Calvary	2,596.27	500.00	Covington, First	5,375.00	10,131.03
Cottonwood	120.00	.00	Durhamville	125.00	110.00
Cottonwood Grove	223.03	933.07	Eastland	.00	1,037.77
Cypress Creek	.00	25.00	Elim	50.41	45.00
Fairview	90.00	110.00	Faith	.00	4,237.71
Hornbeak	130.00	194.00	Fellowship	649.25	1,272.11
Johnsons Grove	176.24	88.22	Fulton	71.41	.00
Lakeview	.00	100.00	Garland	474.69	1,039.50
Macedonia	590.87	257.67	Goldust	.00	.00
Martin, First	3,500.00	7,391.39	Grace	1,698.18	2,255.25
McConnell	251.37	205.00	Henning	463.48	1,371.15
Mooring	30.00	26.25	Keeling	.00	.00
Mount Moriah	75.00	.00	Liberty	3,037.31	2,304.79
Mount Olive	853.66	347.30	Mason, First	43.89	.00
Mount Pella	2,599.93	1,260.04	Mount Lebanon	269.22	.00
New Concord	46.00	166.00	Munford	1,235.91	809.58
New Home	380.00	300.00	Oak Grove	4,155.00	3,782.22
New Salem	1,251.04	1,002.53			

Church	Cooperative Program	Designated	Church	Cooperative Program	Designated
Olive Branch	180.48	186.68	Jacksboro, First	1,543.00	625.00
Pleasant Grove	1,312.95	1,638.68	Jellico, First	2,434.61	1,520.00
Rialto	.00	.00	La Follette, First	4,974.26	4,155.66
Ripley, First	4,029.44	3,254.78	Lake View	45.00	75.00
Ripley, First Indian	.00	.00	Little Cove Creek	.00	.00
Salem	309.06	241.88	Macedonia	.00	.00
Smyrna	2,279.84	1,899.66	Midway	30.00	45.00
Trinity	1,212.00	170.00	Morley	.00	.00
Victory	.00	439.43	New Liberty	.00	.00
Walnut Grove	263.93	152.77	Newcomb	278.45	151.65
Western Valley	211.37	.00	Oak Grove	.00	155.00
Woodlawn	50.00	950.00	Pruden, First	.00	106.00
Total	36,181.16	43,746.02	Ridgeview	7.50	.00

BLEDSOE

Antioch	91.80	.00	Atwood, First	692.78	855.00
Bledsoe Creek	180.00	69.00	Bethel	464.56	.00
Chestnut Grove	77.57	.00	Bruceton, First	5,587.14	3,036.47
College Heights	3,042.64	1,153.05	Camden, First	7,124.57	2,798.42
Corum Hill	40.00	.00	Chalk Level	75.00	250.00
Cottontown	187.50	531.74	Concord	.00	.00
Dixon Creek	.00	400.00	Eagle Creek	122.00	124.00
Fountain Head	150.00	83.00	East Side	1,118.34	314.08
Gallatin, First	14,137.00	14,613.20	Enon	210.00	208.77
Grace	703.82	380.67	Eva	277.87	90.00
Hartsville, First	1,211.58	978.50	Fairview	75.00	100.00
Hillsdale	.00	125.00	Grace	30.00	.00
Immanuel	406.00	115.00	Holladay Unity	75.00	93.00
Indian Hills	300.00	237.00	Hopewell	.00	.00
La Fayette, First	1,089.30	1,312.10	Howse	639.47	602.86
Mitchellville	315.48	117.66	Huntingdon, First	5,645.69	5,707.16
New Hope	.00	303.63	Liberty Hill	.00	.00
Page Heights	677.24	150.00	McKenzie, First	6,555.00	5,295.73
Pleasant Valley	100.00	62.67	McLemoresville	208.38	150.00
Portland, First	3,780.00	2,680.75	Missionary Grove	926.51	575.00
Red Bolls Spgs, Ist.	.00	.00	Mount Nebo	583.98	709.30
Southside	.00	2,677.50	Natchez Trace	473.57	760.56
Station Camp	274.19	.00	New Hope	452.48	467.50
Twin Hills	560.78	45.00	Prospect	2,309.00	786.07
Westmoreland, First	258.57	.00	Republican Grove	.00	.00
Total	27,583.47	26,035.47	Trezevant, First	1,595.14	1,999.44

BRADLEY COUNTY

Antioch	434.08	391.77	Barron Park	51.93	.00
Beacon	.00	324.00	Bethel Hill	47.00	224.14
Bellefonte	715.89	.00	Browns Chapel	9.00	18.15
Bethel	361.20	151.00	Campaign, First	40.00	248.00
Big Springs	7,430.80	3,633.50	Fall City	.00	52.00
Blue Springs	493.92	282.00	Forest Park	490.15	162.00
Brittsville	.00	.00	Gath	445.36	10.52
Calvary	.00	.00	Irving College	.00	.00
Candies Creek	678.34	350.00	Madison Street	161.03	376.92
Center Point	225.00	.00	McMinnville, First	2,498.17	2,181.29
Charity	.00	.00	Marrison, First	798.68	.00
Charleston, First	1,500.00	3,010.00	Mount Elim	140.16	50.00
Chestnut	.00	.00	Northside	1,365.14	.00
Cleveland, First	12,106.65	1,381.28	Providence	508.65	232.00
Clingan Ridge	937.67	600.00	Saint Marys	9.00	47.17
Cloverleaf	.00	.00	Shellsford	2,776.57	1,268.69
Cohulla	.00	.00	Smart, First	508.81	.00
Corinth	138.75	.00	Welchland	103.42	157.17
Council	.00	253.28	Westside	259.09	289.78
East Cleveland	.00	.00	Association	.00	33.77
East View	.00	140.00	Total	10,212.16	5,351.60
Elkmont	.00	.00			
Emmanuel	.00	.00			
Fairview	224.86	55.00			
Four Point	145.73	.00			
Galilee	163.52	.00			
Georgetown	889.14	309.92			
Goodwill	.00	125.00			
Gum Spring	.00	227.16			
Hopewell	3,325.23	3,519.00			
Lebanon	188.70	238.40			
Macedonia	498.44	1,023.58			
Maple Street	1,092.74	506.56			
Michigan Avenue	1,357.75	366.00			
Mount Carmel	1,322.10	1,607.50			
New Friendship	1,187.62	405.80			
New Hope Missionary	.00	.00			
North Cleveland	4,146.96	56.00			
Oak Grove	195.21	.00			
Parkway	184.35	723.90			
Phillippi	865.05	1,305.00			
Ridgeview	.00	.00			
Samples Memorial	.00	.00			
Stuart Park	.00	.00			
Tasso	.00	.00			
Thompson Springs	375.90	350.00			
Union	.00	215.45			
Valley View	1,830.40	796.10			
Washington Avenue	.00	.00			
Waterville	565.00	4,061.00			
West Cleveland	528.68	115.00			
Westwood	10,341.57	10,655.43			
White Oak	.00	150.00			
Total	54,451.25	37,328.63			

BRADLEY COUNTY

Michigan Avenue	1,357.75	366.00	Alcoa Way	709.78	819.00
Mount Carmel	1,322.10	1,607.50	Alcoa, First	7,539.67	.00
New Friendship	1,187.62	405.80	Allegheny	23.19	.00
New Hope Missionary	.00	.00	Armona	3,544.77	2,661.84
North Cleveland	4,146.96	56.00	Beech Grove	3,016.90	4,723.57
Oak Grove	195.21	.00	Bethel	1,745.64	1,006.58
Parkway	184.35	723.90	Birchfield	.00	.00
Philippi	865.05	1,305.00	Broadway	14,456.00	3,992.94
Ridgeview	.00	.00	Calderswood	90.00	85.00
Samples Memorial	.00	.00	Calvary	2,089.52	883.76
Stuart Park	.00	.00	Carson Island	.00	.00
Tasso	.00	.00	Caylor Chapel	98.45	.00
Thompson Springs	375.90	350.00	Cedar Grove	3,000.00	2,700.75
Union	.00	215.45	Centenary	277.99	1,542.44
Valley View	1,830.40	796.10	Central Alcoa	1,648.58	1,246.68
Washington Avenue	.00	.00	Central Point	398.66	479.52
Waterville	565.00	4,061.00	Cold Springs	535.73	1,000.47
West Cleveland	528.68	115.00	Datson Memorial	2,687.36	3,056.55
Westwood	10,341.57	10,655.43	East Alcoa	896.25	1,026.25
White Oak	.00	150.00	East Maryville	8,000.01	2,743.74
Total	54,451.25	57,328.63	East Walland	48.65	212.00
CAMPBELL COUNTY			Ellejoy	174.57	360.90
Alder Springs	81.61	108.36	Everett Hills	8,039.95	4,924.81
Anthrax	.00	.00	Forest Hill	1,514.85	2,239.35
Calvary	108.58	.00	Four Mile	1,033.00	740.00
Caryville, First	1,524.00	395.00	Friendly Hill	62.02	.00
Cedar Creek	.00	.00	Friendship	.00	534.19
Cedar Hill	190.06	735.15	Friendsville, First	6,103.00	2,156.25
Central	.00	.00	Grandview	1,937.93	1,673.31
Clairfield	397.10	211.40	Greenback Memorial	1,200.80	1,000.00
Cooldidge, First	379.49	175.00	Happy Valley	153.60	300.00
Demory	30.00	200.00	Hillview	291.47	603.60
Eagan	31.24	.00	Howewell	232.24	.00
East Jackabara	72.14	216.42	Immanuel	.00	2,298.91
East Le Follette	316.00	246.81	Kagleys Chapel	455.49	510.50
Elk Valley, First	90.00	.00	Keables Chapel	176.71	.00
Elm Grove	.00	.00	Kinzell Springs	100.00	.00
Glade Springs	79.00	160.00	Lake View	.00	.00
High Street	.00	.00	Laurel Bank	1,093.31	861.07
Hillcrest	.00	36.02	Liberty	230.29	.00
Indian Creek	.00	240.52	Louisville, First	299.94	346.89
Indiann Avenue	425.06	325.00			

(Continued on page 10)

Hungry African infant receives second chance

PORTO-NOVO, Benin—Missionary Becky Coutts wanted to shout for joy! Marcellin weighed almost 20 pounds and looked the picture of health. What a contrast with the one-year-old his mother had brought her five months earlier!

On that day, Marcellin's skin had been peeling in patches, leaving tender red skin beneath. An upper respiratory tract infection made his breathing rapid and labored. His eyes were dull, he had lost all his hair, and his legs and feet were swollen. He was apathetic, listless, and seriously ill with diarrhea and vomiting.

For the first time, Mrs. Coutts was seeing a child with kwashiorkor. She had practiced as a registered nurse in Ohio,

Oklahoma, North Carolina, and Texas, but never had seen a case of protein deficiency until she began holding clinics for children five and younger in Benin in March 1980.

She and a Beninese helper, Bernadette Cakpo, began going once a month to locations in Porto-Novo, Dowa, and Cotonou to weigh children, advise mothers on better nutrition and health care, give immunizations and vitamins, and teach flannelgraph health lessons, along with telling about Jesus.

Marcellin's mother had already taken him to a dispensary where a doctor had prescribed some antibiotics and vitamins, but Mrs. Coutts knew someone

must explain to her how to feed him or he would die soon.

She prayed, consulted her books, prepared a powdered milk mixture with sugar and oil, and sat down to talk with Marcellin's mother about why he became ill.

She learned that Marcellin was still nursing and had begun eating cooked corn cereal three times a day — no fish, no eggs, no cooked dried beans, no additional milk. And now he was too sick to take cereal.

Mrs. Coutts explained carefully to the mother that it was up to her to get Marcellin well. Every hour, until he could begin to eat, she must give him the powdered milk mixture dissolved in boiled water that had been cooled. Then add to it his cooked cereal. Then begin adding fish or eggs to his cereal. Then feed Marcellin full meals with fish or eggs or beans or added milk.

The woman understood. Mrs. Coutts showed her how to mix the powdered milk supplement in water, and together they gave some to Marcellin. He took it eagerly at first, then began to choke and spit up the milk.

"I was discouraged, but didn't say so to the mother," said Mrs. Coutts. "Instead I suggested that she dilute the milk mixture in half for a couple of days and then resume full strength. We prayed together before she left, asking God's healing for Marcellin and His strength and wisdom and patience for her as she cared for the child. I asked her, as she went out the gate, to come to the under-5s clinic in Dowa in two weeks."

Two weeks later, Mrs. Coutts was relieved to see Marcellin still alive. His infections were healing and he had lost weight because his swelling had gone down.

A month later, he weighed the same, but was eating better. In fact, his mother said, all he wanted to eat was fish. Mrs. Coutts was delighted. She gave him some vitamins and started him on immunizations.

Two months later Marcellin reached normal weight for his age. And not only was he healed, but Mrs. Coutts could see his mother growing in her knowledge of Jesus.

Every month in the clinic, she uses the "wordless book" to tell the story of Jesus to the mothers who bring their children. She tells essentially the same story every time: "The yellow page represents God and His light and love for us. The black page is the sin and

darkness that fill our lives so that we can't find God. The red page shows the blood of Jesus Who gave Himself as a sacrifice on the cross so our sins could be forgiven and washed away. The white page represents the pure and new heart that Jesus gives us when we pray and accept Him, believing what He has done for us. And with a new heart and new life in Jesus, we have God."

At first the women would hardly sit still through the wordless book presentation. They talked and chased down children. But gradually they began to listen fairly attentively, said Mrs. Coutts. "I am thrilled to see some mothers beginning to understand what Jesus has done for them on the cross."

She has promised to give a personal copy of the book to each mother who can explain all the colors without prompting. Recently, Marcellin's mother became the first mother to earn her own copy.

Churches in Taiwan strengthen outreach

TAIPEI, Taiwan (BP)—Since the United States and the Republic of China broke diplomatic relations in December 1978, Baptist churches which serve the English-speaking foreign community in Taiwan have been struggling to survive.

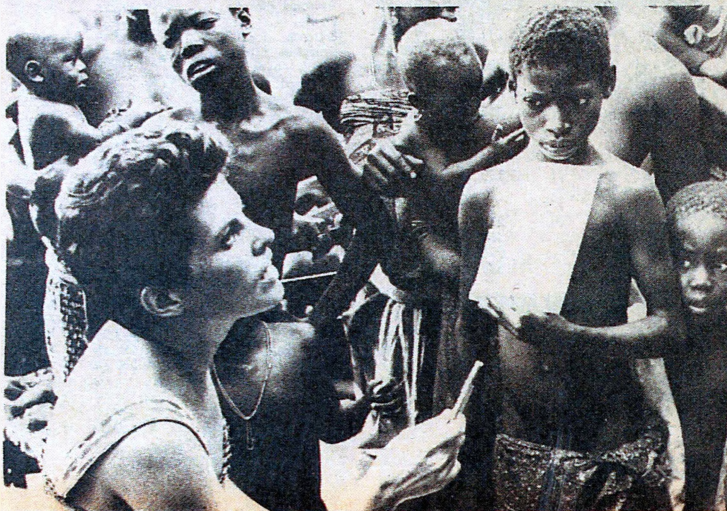
As American military personnel withdrew, membership in these churches dropped drastically. But the need for new members has prompted at least three churches to reach out in new directions.

Calvary Baptist Church in Taipei, where Southern Baptist Missionaries Tilden and Linda Bridges are co-pastors, is now offering English Bible studies and English Bible fellowships for college students.

Trinity Baptist Church in Tainan now has English-speaking Chinese members.

Immanuel Baptist Church in Taichung, where Missionary Ray Green is pastor, also is having Bible fellowships. But their major emphasis has been in starting a village ministry in the surrounding area.

English-speaking and Chinese-speaking church members are visiting five villages, one each week. They teach a Bible verse in English, teach an English song, have a testimony, show a film, and then encourage personal discussion between church members and the Chinese village people. They also encourage the villagers to enroll in a Bible correspondence course.



TAKING NOTE — Becky Coutts, missionary to Benin, notes the weight of a child visiting one of her clinics for children. She and a helper go once a month to each of three towns where they set up clinics.

Military system improves mission hospital's impact

NALERIGU, Ghana (BP)—The Baptist Medical Centre in Nalerigu, Ghana, has implemented a military-style treatment priority system to help handle large numbers of patients at the hospital's outpatient clinic.

Modeled after the triage system military units use to assess treatment priorities of battlefield casualties, the hospital's screening system is helping the handful of doctors and other medical personnel at Nalerigu handle up to 700 clinic patients a day.

About 80 percent of the people coming on clinic days will now be screened by someone on the medical staff, then routed directly to the pharmacy for drugs and sent home. Most of these patients have minor complaints or have already seen a doctor without access to medication. Drugs are extremely scarce in Ghana.

The 20 percent with more serious ailments are screened a second time by paramedical personnel who can order preliminary laboratory workups or send the patient directly to see a physician. This means the physician can see more patients, says Franklin T. Fowler, the Southern Baptist Foreign Mission Board's medical consultant and a member of the hospital evaluation team which recommended these changes last fall.

Fowler adds that some people consider medical missions to be "mass medicine" because of the vast numbers to be treated, as at Nalerigu. But the triage system has allowed the staff, limited by

severe personnel shortages, to cut their 14-hour days to eight or eight and one-half hours and still get the job done.

The personnel problem afflicts all Southern Baptist medical missions, but is more acute at some like Nalerigu which have had to rely on volunteers and special project workers or cut back services because they lack career missionaries.

Dr. Frances Greenway is the only career missionary physician assigned to the hospital. Dr. Walter Moore curtailed some of his work in a public health ministry to help in the clinic, but has been limited in recent weeks by injuries sustained in a Dec. 18 auto accident.

The Nalerigu staff has been boosted by two short-term physicians — one a special project worker, the other a volunteer. Fowler says there is a real need for volunteer surgeons to fill in during the rest of the year.

A career missionary will transfer to Ghana from Tanzania next July, Fowler adds, but there is still a "desperate" need for physicians with specialties in surgery, pediatrics, and obstetrics and gynecology. Three nurses also are needed immediately, as well as two nurse midwives, a nurse practitioner, and a hospital administrator.

The Baptist institution in Nalerigu, the only hospital within a 100-mile radius, has opened the way into an area of great response to the gospel. It has already been directly or indirectly responsible for establishing 30 small preaching points.



AID TO MOTHERS — Bernadette Cakpo (right) interprets for Southern Baptist Missionary Becky Coutts as they talk to a Beninese mother about how to care for her child.

LIFE AND WORK SERIES

Lesson for Feb. 22

Accepting God's love

By Danny E. Bush, associate minister
First Baptist Church, Oak Ridge

Basic Passage: Luke 15:1-32
Focal Passage: Luke 15:11-24

"No, no, He couldn't love me, I'm too rotten!" He kept repeating this over and over. His life at one time had been successful and happy, but now, a few years later, he was dirty, with matted hair, and on his hands and knees in a Fort Worth, Tex. rescue mission chapel.

He had just heard me say, "God loves you", and he could not believe it. With my clean clothes and combed hair, I got on my knees beside him and, with tears in my eyes, reassured him that God loved him and would forgive him. What a relief it was to him when he decided to accept God's love! Sometime later, the mission chaplain told me the man had been reunited with his family and life had become a thing of joy and peace.

This all came about because of the matchless love of God accepted and incorporated into a life.

Parables are well defined as earthly stories told with heavenly meanings. Jesus, in the parables of the lost sheep, lost coin, and lost son, is conveying in such simple, yet eloquent style, the great



Bush

persistent, searching, forgiving, and loving nature of God toward mankind. How on earth can anyone resist such love? They resist the love of God by choice. God gave mankind the ability to choose, to decide for himself or herself.

The other day a telephone counselor referred a troubled young man to me. He arrived at the church during the last part of a committee meeting I was attending. Our associate minister of music called me out of the meeting to tell me the fellow was looking for me. We met in my office. He had come following a family squabble at home. After an hour or so of listening, it was clear that his life was without aim or purpose. He was wandering through life without God, without direction. What a privilege it was to lead him to accept Christ and the love of God. Fortunately for him, he accepted God's love. Not everyone accepts the love of God, but we must keep telling others about it.

The two men in these examples were different in many ways - age, appearance, experience, and background. But they had one vital thing in common - they were lost. They needed to accept God's love before the most important change in their lives could begin - salvation.

Much emphasis in recent years has been placed on environment for learning and for motivation. Environment does influence learning, but motivation is not entirely dependent on it.

At a session of the Southern Baptist Religious Education Association in St. Louis last year, a prominent university professor, as well as a Baptist Sunday School teacher, reminded conferees of a statement by Anthropologist Dorothy Lee, "Motivation is autonomous." Southern Baptists are familiar with the term "autonomy," the freedom and ability to govern themselves independently. The decision to accept God's love as revealed is an autonomous decision. It is up to the hearer.

Every person is lost until he accepts God's grace and His forgiving love. The call to accept is urgent. "Now is the day of salvation."

Bold missions requires bold proclamation and bold acceptance of God's love.

Baptist church in Nazareth ordains five Arab deacons

NAZARETH, Israel - For the first time in its 70-year history the oldest Baptist Church in the Middle East has reached the Biblical number of seven deacons. Nazareth Baptist Church has ordained five Arab men, age 25 to 36, to join two 18-year veterans. Two are teachers, two are electricians, and one is a welder.

During their ordination service, a spokesman for the group told the large gathering that they knew ordination was not a medal for past service but rather "a burden we gladly bear on our shoulders for the Lord's work."



Pews, Pulpit and Chancel Furniture

Phone 704/322-8380

Dept. J. P.O. Drawer 2187
Hickory, North Carolina 28601

Tragic murder fails to halt revival on seminary campus

NEW ORLEANS (BP) - A killer lurked among the nearly 1,200 students, faculty, and city residents who swarmed onto New Orleans Baptist Theological Seminary campus Jan. 27 for a revival meeting.

While most of the people filed into Leavell Chapel, one went to the home of Ethyl Louise Robbins, beat her to death, and took up to \$300 from her purse.

A coroner fixed the time of Mrs. Robbins' death between 7 p.m. and 8 p.m., or about the time 7:30 p.m. services began with Perry Sanders, pastor of First Baptist Church, Lafayette, La.

A recent knee operation probably kept Mrs. Robbins, wife of New Orleans seminary Professor Ray Robbins, from attending the service herself. About the time it started, Mrs. Robbins called a neighbor to say she heard a prowler outside her house. Records show the neighbor called campus security at 8:15 p.m. to report a prowler in the area around the Robbins' house. Officers checked doors and windows of homes in the area, but did not ring the Robbins' doorbell, since the call had been general and not from Mrs. Robbins, said Don Stewart, seminary executive vice-president.

Stewart said there are still no clues. Mrs. Robbins' death cast the seminary in deep gloom and threatened to cancel the long-planned and heavily prepared for revival meetings.

Sanders met before the morning revival service Jan. 28 with seminary President Landrum Leavell and Robbins to decide what to do about the meetings.

International cooperation helps church reach people

SABAH, East Malaysia - International cooperation is helping a church in Malaysia reach people for Christ.

A Chinese Baptist church in Sabah, East Malaysia, is using materials from the Baptist Literature Board in Indonesia to reach Malay people. Few Baptist materials are published in Malay, the official language of Malaysia, but it is almost the same as Indonesian, the official language of Indonesia.

Used Church Pews Wanted

Pews need to be approximately 12 ft. long. Solid Oak Preferred.
In Good Condition
Call Mose Chadwell
(615) 746-8649

CHURCH PEW CUSHIONS

Padded seats or reversible cushions. Foam filled, velvet or Marclon. Call measurements collect for estimate: Mrs. J. T. Landrum, Owner
Telephone: 803-277-1658
CONSOLIDATED UPHOLSTERY
28 Dolphin St., Greenville, S.C. 29605

"There is no alternative," Robbins said. "We must go on with the revival."

"When the Lord gets ready to do something, there is a satanic force in operation too," said Sanders, a week after the incident. "I believe this was an effort of Satan to sidetrack the revival, but it didn't happen."

"I had to change gears, of course, in about an hour," said Sanders. "There was no way to speak on any subject except that (Mrs. Robbins' death). Preaching must be related to life and at that particular moment, life was death, really. My message simply had to be related to what was happening."

Sanders chose a text from Paul's letter to the Philippians, a book Southern Baptists absorbed in January Bible Study - a study Ray Robbins wrote.

The text: "Now I want you to know brethren that my circumstances have turned out for the greater progress of the gospel" (Phil. 1:12 ASV).

Sanders talked of the "magnificent triumph of the Christian faith" through the difficult trials of Paul. He said there are three ways to react to life's tragedies: (1) resentfully, shaking our fist in the face of the Creator; (2) submissively, by drawing into a shell; or (3) the New Testament way: redemptively, constructively, and creatively.

Robbins was teaching the Philippians study in Baton Rouge the night Mrs. Robbins was killed. He returned home and found her body.

"At the very time of her death, he might have been teaching that very Scripture," said Sanders, a close personal friend of Robbins.

Church Pews, Inc.

2250 Hwy 43 N
Grove Hill, Ala. 36451
205-275-3101
Complete Line • Solid Wood

COUPLES NEEDED

to serve as group care workers caring for boys and girls in a live-in situation at our campus.

Must be mature, responsible, and Christian.

Contact

Tennessee Baptist
Children's Home
Box 519
Franklin, Tennessee 37064
Phone 615-794-6648

1981 Motor Coach Tours

From Knoxville, TN

Twin Price Per Person

6 Day	New York Theatre/Shopping	March 31-April 5	\$ 335
5 Day	Washington, D.C.	April 13-17	\$ 184
9 Day	Texas and New Orleans	May 23-31	\$ 385
17 Day	Nova Scotia and East Canada	July 17-August 2	\$ 790
6 Day	Williamsburg & Colonial Virginia	September 21-26	\$ 270
9 Day	Fall New England	October 3-11	\$ 399
5 Day	New Orleans Thanksgiving	November 25-29	\$ 280

Write or call Today for Free Itineraries

CREATIVE TOURS

446 Campbell Station Rd. Concord Tenn. 37922 615/966-1427

The bomb was thrown through a window in the rear of the house and exploded as it hit the bedroom door. Flames shot up the wall and the burning liquid ran under the door and into another bedroom before it was put out. The baby was on a regular bed at the time but had been sleeping in a crib next to the door. One end of the crib was burned extensively.

Church	Cooperative Program	Designated
(Continued from page 7)		
Macedonia	.00	.00
Madison Avenue	1,400.00	6,121.40
Maple Grove	91.23	981.36
Marble Hill	103.67	.00
Maryville, First	31,406.63	23,378.55
Meadowbrook	.00	30.00
Memorial	2,081.11	361.00
Midway	.00	464.78
Millers Cove	338.54	380.77
Monte Vista	10,044.01	5,101.68
Mount Carmel	592.68	326.00
Mount Lebanon	6,813.03	5,389.75
Mount Zion	.00	600.00
Niles Ferry	2,794.74	766.64
Oak Street	1,255.08	4,300.00
Oak View	105.82	100.00
Old Chilhowee	930.70	1,068.98
Old Piney Grove	388.00	825.00
Pilgrim	2,509.87	1,175.71
Piney Grove	500.00	515.00
Piney Level	4,703.45	4,285.85
Pleasant Grove	1,099.62	1,035.20
Prospect	1,250.69	3,054.96
Providence	556.76	1,141.31
Rockford	627.00	636.31
Rocky Branch	510.25	867.61
Salem	7,382.88	2,804.98
Seymour, First	938.00	1,378.13
Six Mile	223.76	735.00
Smoky View	581.12	77.00
Springview	7,682.97	3,399.65
Stock Creek	.00	.00
Trinity	.00	454.83
Union Grove	1,388.48	2,192.75
Village Missionary	100.61	622.49
West Maryville	966.88	721.00
Wildwood	1,472.33	1,312.71
Zion Chapel	1,212.00	614.95
Association	.00	509.71
Total	166,908.06	125,469.93

CLINTON

Andersonville, First	2,361.83	234.25
Batley	.00	850.00
Beech Grove	310.70	621.44
Bethel	.00	892.71
Black Oak	2,715.00	1,896.53
Blowing Springs	398.00	255.00
Briceville, First	.00	803.00
(H) Calvary	876.05	560.33
(O R) Calvary	4,583.93	1,624.06
Central	11,301.50	1,188.50
Clear Branch	2,482.00	1,146.11
Clinch River	1,012.00	2,172.00
Clinton, First	11,686.66	6,054.52
Clinton, Second	6,067.00	3,364.00
Dutch Valley, First	.00	1,100.00
Edgemoor	980.25	210.00
Fairview	1,342.47	210.00
Farmers Grove	280.55	498.84
Frost Bottom	.00	113.60
Glenwood	2,015.00	2,248.82
Graves Gap	.00	.00
Grace	.00	.00
Grave Hill	.00	.00
Guiding Star	.00	50.00
Hillvale	.00	.00
Indian Bluff	336.80	.00
Island Ford	111.93	.00
Island Home	.00	.00
Jarnigans Chapel	.00	.00
Lake City, First	1,377.99	894.50
Lakeview	30.00	.00
Laurel Branch	246.84	100.00
Laurel Grove	116.50	38.68
Longfield	199.09	.00
Main Street	250.00	1,536.00
Mineral Springs	50.76	.00
Moran	304.00	710.00
Mount Pleasant	1,055.62	392.04
New Mountain View	558.89	.00
New Salem	1,277.44	781.50
Norris, First	331.00	431.70
North Clinton	.00	.00
Oak Ridge, First	4,651.36	5,223.19
Oliver Springs, First	3,681.56	1,182.11
Pine Hill	.00	650.42
Pleasant Hill	730.97	637.98
Pleasant View	231.20	308.25
Poplar Creek	414.17	500.05
Red Hill	.00	103.00
Robertsville	4,521.22	641.74
Royce	838.25	1,624.82
South Clinton	2,432.40	.00
Springhill	.00	54.80
Tupperstown	30.00	.00
Union Valley	.00	.00
Valley View	89.00	189.00
Waldens View	.00	.00
Willow Brook	.00	559.26
Woodland Park	756.00	364.00
Zion	1,106.71	15.30
Total	74,142.74	42,822.47

CONCORD

Barfield	596.00	74.63
Belle Aire	6,309.76	3,330.79
Bradleys Creek	70.29	123.00
Christiana, First	248.24	283.25
Eagleview	133.32	245.77
Fellowship	.00	.00
Florence	339.67	.00
Giles Creek	200.41	82.40
Grace	300.00	272.11
Green Hill	188.03	126.00
Hillview	750.00	227.02
Holly Grove	203.23	176.35
Immanuel	870.00	633.00

Church	Cooperative Program	Designated
Lascassas	1,040.19	542.19
LaVergne, First	917.00	474.00
Maney Avenue	98.93	.00
Midland	110.02	.00
Milton	355.00	188.00
Miracle	2,140.63	1,535.66
Mount Carmel	.00	.00
Mount Herman	620.00	1,336.60
Mount Pleasant	196.51	634.29
Mount View	1,031.00	490.00
Murfreesboro, First	10,499.99	8,177.75
Murfreesboro, Third	1,932.69	465.22
New Hope	186.60	175.00
Nolensville	48.00	222.10
Patterson	70.00	150.00
Powells Chapel	2,601.88	650.72
Rucker	15.00	25.00
Smyrna, First	2,668.00	4,875.51
Southwest	2,667.39	3,196.71
Stones River	1,180.00	549.00
Taylor's Chapel	.00	.00
Walter Hill, First	100.00	.00
Wards Grove	844.84	491.01
Wayside	.00	.00
Westgate	277.00	268.00
Woodbury Road	977.00	928.63
Total	40,788.62	30,949.71

COPPER BASIN

Bethlehem	.00	.00
Coletown	355.26	.00
Isabella	143.52	343.52
Maple Grove	.00	.00
Mine City	2,224.27	1,693.53
Mount Harmony	.00	40.00
Mount Vernon	.00	.00
Mount Zion	238.97	265.00
New Zion	175.57	.00
Pleasant Hill	.00	.00
Turtletown	737.00	285.00
Zion Hill	588.67	319.00
Total	4,463.26	2,946.05

CROCKETT COUNTY

Alamo, First	4,413.26	3,222.31
Barkers Chapel	63.45	74.54
Bells, First	2,837.15	3,780.07
Cairo	.00	.00
Cross Roads	946.38	1,004.00
Friendship	1,106.00	745.70
Gadsden	500.00	852.00
Johnson Grove	.00	50.00
Maury City, First	843.71	1,396.64
Midway	48.80	.00
Providence	.00	118.05
South Fork	224.17	432.50
Three Way	814.94	457.78
Walnut Hill	375.00	647.00
Total	11,357.92	12,322.81

CUMBERLAND

Alva	13.78	23.78
Blooming Grove	763.00	260.00
Cannan, First	214.00	270.00
Charlotte, First	443.86	68.98
Clarksville, First	15,346.69	13,399.79
Cross Creek	321.79	276.75
Crossland Avenue	322.82	50.00
Cumberland City, First	212.00	.00
Cumberland Drive	1,727.11	38.57
Datsenville	56.00	.00
Erin	750.00	1,093.80
Excell	1,019.01	415.67
Grace Avenue	593.34	193.47
Gum Springs	358.66	.00
Harmony	334.11	217.00
Hillcrest	814.94	457.78
Hillside	2,708.11	2,962.41
Immanuel	92.88	.00
Kenwood	1,294.73	402.78
Kirkwood	387.96	217.00
Little Hope	693.28	473.50
Little West Fork	333.32	737.94
Memorial	161.85	182.00
Mount Herman	604.52	329.14
New Canaan	40.00	.00
New Providence	1,682.78	936.00
Northeast	426.87	30.00
Northside	50.00	.00
Parkview	1,127.32	238.67
Pleasant View	1,721.91	245.00
St. Bethlehem, First	462.00	320.24
Slayden	183.97	.00
Spring Creek	840.00	949.27
Trinity	335.26	288.11
Vanlee	194.99	.00
Woodlawn	428.39	70.00
Association	.00	251.30
Total	38,061.45	25,398.95

CUMBERLAND GAP

Atlantus Hill	312.10	52.50
Bethel	.00	.00
Big Spring Union	.00	30.00
Blairs Creek	.00	146.40
Brooks Memorial	.00	.00
Calvary	.00	.00
Carrs Chapel	150.20	564.71
Cave Spring Missionary	.00	1,000.00
Cedar Fork	.00	162.45
Cedar Grove	.00	.00
Chadwell Station	367.90	358.28
Cumberland Gap, First	25.00	100.00
Duncan Chapel	.00	1,081.00
East Hopewell	.00	.00
Fair View	.00	.00
Forge Ridge	.00	75.00
Gap Creek	.00	932.74

Church	Cooperative Program	Designated
Gibson Station	.00	.00
Goins Chapel	.00	100.00
Greens Chapel	.00	20.00
Harragale, First	620.56	30.00
Haynes Flat	.00	534.20
Head of Barren	.00	.00
Hope Missionary	.00	.00
Hopewell	.00	.00
Howards Quarter	.00	.00
Indian Creek	.00	.00
Liberty Missionary	.00	.00
Liberty Hill	42.00	.00
Little Mulberry	.00	163.38
Little Valley	.00	.00
Lone Hill Missionary	.00	.00
Lone Holly	.00	.00
M C M	.00	.00
Midway Missionary	204.72	350.00
Mount Gilead	.00	.00
Mount Pleasant	25.00	20.00
Mount Zion	.00	.00
Mountain View	.00	.00
New Hope	.00	.00
New Salem	.00	135.20
New Tazewell, First	1,451.87	935.69
Oak Grove	.00	180.00
Peoples Missionary	.00	.00
Pleasant View	.00	.00
Poplar Grove	.00	.00
Providence	.00	24.00
Pump Hollow	.00	.00
Pump Springs	357.55	382.00
Raven Hill	.00	.00
Red Hill	.00	.00
Riley Memorial	.00	.00
Riverside	.00	.00
River View	.00	93.81
Shawnee	552.44	1,158.50
Springdale	.00	80.36
Springfield Missionary	.00	.00
Straight Creek	.00	.00
Sugar Grove	.00	.00
Summeys Bridge	.00	.00
Sunrise Missionary	.00	.00
Tazewell	365.87	300.00
Town Creek	.00	218.00
Underwood Grove	333.40	702.60
Union Chapel	.00	137.00
Walnut Hill	.00	235.00
Westside Missionary	.00	.00
Wolfenbarger Chapel	.00	.00
Total	4,808.61	10,302.92

CUMBERLAND PLATEAU

Bethlehem	239.25	285.55
Calvary	30.00	.00
Clear Creek	49.01	.00
Crossville, First	1,384.49	200.00
Cumberland Homestead	3,168.53	1,460.02
Emmanuel	300.00	327.87
Fairfield Glade	388.32	262.00
Fairview	.00	.00
Fredonia	456.69	165.34
Haleys Grove	219.67	412.00
Isaline	149.01	48.03
Mayland	367.68	50.00
Memorial	338.90	1,643.35
Meridian	71.00	10.00
Mountain View	276.45	120.00
Oak Hill	344.13	521.30
Oaklawn	622.91	372.12
Ozone	45.95	32.60
Plateau	.00	.00
Pomona	60.00	111.54
State Spring	44.50	44.50
Westel	289.25	849.05
Total	8,845.94	6,915.27

DUCK RIVER

Air View	.00	.00
Altamont	41.34	.00
Bethel	.00	.00
Brookview	922.23	602.00
Center Grove	432.00	.00
College Street	.00	25.00
Cowan, First	1,052.92	1,588.09
Cross Roads	1,113.25	140.00
Dechard, First	1,428.00	1,278.10
Estill Springs	1,706.91	589.52
Grace	1,678.06	1,729.96
Highland	1,935.00	1,586.12
Hillsboro	215.93	61.00
Huntland	509.82	100.00
Keith Springs	37.28	50.00
Liberty	435.32	50.00
Lincoln Heights	612.62	1,223.50
Little Mountain	51.00	.00
Manchester, First	5,603.06	3,652.45
Maxwell	464.82	662.01
Midway	400.55	139.00
Monteagle, First	159.08	55.00
Oaklawn	575.01	.00
Prairie Plains	35.84	73.00
Rive Lake	471.21	50.00
Rutledge Falls	535.00	.00
Southside	157.05	700.80
Spring Creek	510.36	193.86
Summitville	112.90	110.18
Tracy City, First	2,667.00	518.00
Trinity	3,572.44	1,285.79
Tullahoma, First	11,392.80	570.00
Victory	33.32	116.32
Westwood	152.00	102.45
Winchester, First	4,959.89	2,811.73
Total	43,974.01	20,063.85

DYER

Bee

Church	Cooperative Program	Designated
Dyer, First	2,992.73	3,235.36
Eldad	200.00	125.00
Emmanuel	1,995.34	1,829.13
Fellowship	284.53	115.71
Fruitland	464.00	333.88
Gibson	.00	200.00
Hickory Grove	705.77	533.00
Hillcrest	.00	.00
Humboldt, First	6,415.90	8,223.25
Idlewild	766.00	525.00
Immanuel	57.48	.00
Keely Hill	199.95	115.12
Kenton, First	3,870.00	3,398.14
(K) Laneview	210.00	67.83
(T) Laneview	93.68	21.00
Latham Chapel	500.00	507.00
Lavinia	247.69	475.64
Maranatha	104.06	.00
Medina	4,583.14	1,566.69
Midway	215.44	214.93
Millan, First	12,301.47	6,537.00
Mount Pisgah	280.20	278.00
Mount Pleasant	1,455.00	2,012.00
New Bethlehem	1,286.64	1,987.22
New Hope	318.05	2,289.10
Northern Chapel	.00	.00
Northiside	2,108.52	3,352.69
Oak Grove	360.46	125.00
Oakwood	711.90	596.13
Old Bethlehem	147.00	120.00
Poplar Grove	827.87	471.72
Poplar Springs	517.50	406.00
Rutherford, First	425.00	1,821.00
Salem	1,078.53	750.10
Southside	.00	.00
Springhill	376.00	150.00
Trenton, First	5,214.96	5,200.07
Walnut Grove	250.00	538.75
West Side	718.62	363.13
White Hall	1,098.00	1,529.00
Association	.00	12.25
Total	64,108.90	56,306.59

GILES COUNTY

Bradshaw	.00	50.00
Elkton	683.52	174.50
Hannah	.00	.00
Highland	1,336.81	1,813.76
Liberty Hill	45.00	.00
Lynnville, First	75.19	.00
Minnow Branch	10.00	.00
Minor Hill, First	.00	.00
New Hope	225.00	845.00
New Zion	124.34	248.68
Oak Grove	16.00	.00
Pulaski, First	4,785.44	1,206.19
Rock Springs	300.00	.00
Scotts Hill	.00	.00
Shores	101.96	227.06
Thompson Chapel	.00	.00
Union Hill	.00	.00
Union Valley	.00	.00
Welcome Valley	.00	.00
Wheelerton	.00	150.00
Total	7,703.26	4,715.19

GRAINGER COUNTY

Adriel	.00	.00
Avondale	.00	81.25
Barnards Grove	369.63	391.80
Bean Station, First	170.33	400.00
Block Springs	339.00	2,250.00
Blue Springs	735.54	903.39
Buffalo	205.00	428.00
Byerleys Chapel	.00	118.94
Calvary	65.00	.00
Central Point	198.66	651.00
Coffeys Chapel	.00	.00
Fairview	396.11	.00
Head of Richland	88.87	.00
Hellon Springs	465.01	1,000.00
Indian Ridge	388.60	174.02
Lea Springs	664.98	1,000.03
Locust Grove	241.64	185.00
Mitchell Springs	.00	.00
Mount Eager	.00	.00
Mouth of Richland	1,550.18	3,306.35
Narrow Valley	102.84	200.00
New Blackwell	189.03	201.00
New Corinth	247.14	407.38
New Prospect	54.65	.00
Newton	.00	.00
Oak Grove	.00	.00
Oakland	1,282.59	1,165.32
Powder Springs	56.59	25.00
Puncheon Camp	.00	.00
Red House	.00	.00
Riverview	.00	.00
Rutledge	693.33	125.00
Southside	93.90	.00
Sunrise	283.98	824.35
Tampico	36.86	111.44
Washburn	.00	.00
Total	8,919.46	13,979.27

HAMILTON COUNTY

Alpine	631.36	372.76
Apison	2,594.83	2,352.67
Avondale	.00	789.45
Barlebaugh	1,077.00	1,041.00
Bayside	5,030.82	3,191.93
Beacon	.00	.00
Birchwood	1,411.50	1,834.00
Brainerd	15,578.82	104.00
Brainerd Hills	3,575.56	.00
Cedar Hill	3,020.92	5,783.50
(C) Central	18,000.00	12,808.21
(H) Central	15,632.05	.00
Chamberlain Avenue	3,095.04	1,113.00

Church	Cooperative Program	Designated
Charity	.00	.00
Chattanooga, First	12,500.00	43,245.10
Chattanooga, Second	667.00	1,011.00
Clifton Hill	974.39	603.35
Community Missionary	.00	.00
Concord	10,285.06	6,128.09
Cross Roads	.00	.00
Daisy, First	3,325.65	3,731.28
Dalewood	.00	.00
Denny Hill	.00	.00
East Brainerd	1,691.79	850.50
East Chattanooga	3,732.51	2,393.75
East Lake	6,152.92	5,162.42
East Ridge	12,375.66	7,830.61
Eastwood	2,848.70	975.00
Edwards Point	.00	.00
Fairview	321.00	100.00
Falling Water	1,372.35	250.00
Falling Water Tab.	303.08	110.00
First Calvary	.00	.00
Frawley	216.42	558.97
Friendship	.00	.00
Friendship Missionary	.00	.00
Grace Avenue	57.15	10.00
Greenwood	.00	.00
Guild, First	39.00	.00
Harrison	.00	174.31
Hickory Valley	265.46	60.00
High Point	480.00	.00
Hilltop	.00	.00
Hixson, First	9,746.37	13.68
Hughes Avenue	300.00	200.00
Johns Memorial	496.00	.00
Kings Point	107.03	752.00
Kingwood	620.00	1,600.00
Lakeway	.00	.00
Lookout Mountain	550.00	1,700.00
Lookout Valley	5,284.48	2,161.43
Maple Grove	2,726.96	3,350.00
Maranatha	.00	.00
Meadowview	548.97	10.00
Memorial	4,381.44	2,885.19
Middle Valley	3,937.86	.00
Morris Hill	2,335.62	.00
Mount Carmel	1,517.10	4,737.37
Mountain Creek	1,777.36	785.94
Mountain View	427.20	.00
New Bethel	120.80	.00
New Liberty	127.00	250.00
New Salem	2,739.32	1,150.11
New Shepherd Hill	184.35	195.49
New Union	.00	270.46
North Red Bank	.00	265.02
Northiside	3,525.27	3,644.00
Oak Grove	623.00	.00
Oak Street	1,351.32	112.61
Oakwood	8,250.00	1,552.05
Ooltewah	4,272.14	3,724.21
Parkers Gap	.00	.00
Philadelphia	37.50	599.58
Pilgrim Rest	.00	385.22
Pleasant Grove	1,449.97	50.00
Pleasant Hill	.00	.00
Providence	956.00	640.20
Red Bank	28,313.73	11,573.76
Ridgecrest	1,161.28	128.00
Ridgegate	13,479.00	6,215.60
Ridgeview	3,000.00	450.00
Riverside	.00	.00
Saint Elmo Avenue	5,906.33	3,752.35
Shepherd	.00	.00
Signal Hill	285.28	125.00
Signal Mountain	7,815.93	50.06
Silverdale	6,703.35	4,566.04
South Seminole	6,552.94	4,912.71
Spring Creek Road	8,084.05	7,131.81
Stanley Heights	.00	.00
Stuart Heights	1,368.31	553.05
Trenton	558.62	.00
Tyner	437.00	416.00
Union Fork	278.33	101.50
White Oak	10,237.06	10,472.67
Whiteside	.00	46.75
Woodland Heights	.00	50.00
Woodland Park	3,193.77	2,739.06
Total	283,024.08	186,903.82

HARDEMAN COUNTY

Bethlehem	.00	.00
Bolivar, First	7,649.90	5,533.12
Brints Chapel	.00	.00
Cloverport	48.51	116.00
Dixie Hills	626.38	1,739.60
Ebenezer	255.00	.00
Enon	.00	.00
Essary Springs	80.89	80.89
Grand Junction, First	3,030.00	4,234.55
Hatchie	436.20	150.70
Hebron	370.86	500.00
Hickory Valley	1,300.00	1,140.00
Hornsby	796.31	339.00
Middleburg	200.00	200.00
Middleton, First	860.00	1,418.00
Midway	67.47	53.00
New Bethel	142.75	103.80
New Union	1,040.11	555.51
Parrans Chapel	1,817.20	1,302.00
Piney Grove	356.79	.00
Pleasant Grove	.00	.00
Pocahontas, First	415.00	1,358.00
Porters Creek	432.89	322.00
Rocky Springs	.00	.00
Saulsbury	701.16	886.15
Shandy	250.00	.00
Silerton	763.59	767.79
Tone	1,186.03	220.82
Trinity	45.00	117.80
Walnut	316.02	641.67
West Memorial	842.12	1,563.25
Whiteville, First	1,696.83	854.00

Church	Cooperative Program	Designated
Association	.00	900.00
Total	25,727.01	25,097.65

HAYWOOD

Allen	1,536.00	3,430.00
Antioch	.00	195.00
Brownsville	11,748.98	15,119.65
Calvary	416.39	369.75
Harmony	1,787.19	1,832.78
Holly Grove	874.34	2,838.55
Poplar Corner	475.00	750.00
Shaws Chapel	87.78	53.00
Stanton	419.37	681.51
Woodland	1,047.67	263.00
Zion	2,873.72	1,637.06
Total	21,265.44	27,170.30

HIWASSEE

Chapman Grove	.00	300.00
Concord	.00	241.06
Point Rock	.00	300.98
Peakland Missionary	50.00	.00
Pisgah	.00	255.52
Ten Mile	743.83	312.50
Total	793.83	1,410.06

HOLSTON

Antioch	2,785.08	1,235.00
Baileytown, First	.00	475.00
Bethany	162.70	106.50
Bethel View	602.98	734.94
(B) Bethel	.00	.00
(J C) Bethel	87.52	52.46
Beulah	3,704.42	939.36
Blountville, First	3,221.60	3,071.90
Bluff City	1,235.29	1,008.29
Bluff City, First	6,652.15	3,200.48
Boone Trail	653.52	750.50
Boones Creek	331.76	2,317.57
Bowmantown	598.97	580.50
(B) Calvary	7,441.00	1,127.77
(E) Calvary	3,724.55	.00
(G) Calvary	100.00	.00
(J C) Calvary	60.00	170.00
Cedar Creek	.00	300.00
(E) Central	225.04	.00
(J C) Central	16,300.03	20,867.80
Cherokee	659.86	817.85
Cheorkee Mountain	.00	15.00
Cherry Grove	377.68	.00
Chestoa	30.00	.00
Chinquapin Grove	2,860.00	961.32
Clark Street	150.00	16.00
Clear Branch	200.00	3,748.33
Clifton View	564.00	76.40
Coffee Ridge	.00	.00
East Watauga Avenue	183.10	58.48
Eastern Gate	.00	33.72
Embsville Cove	.00	.00
Emmanuel	.00	.00
Enon	479.37	100.00
Erwin, First	5,350.00	7,272.50
Fall Branch, First	441.66	621.25
Fall Creek	866.41	300.00
Flag Pond	404.61	160.00
Fordtown	1,890.96	644.97
Grace	681.68	1,027.20
Green Pine	210.00	95.00
Greene Hills	627.65	394.26
Greenelawn	207.34	146.00
Greenville, First	9,958.16	5,517.28
Greenwood	255.45	201.55
Harmony	250.00	622.00
Higgins Chapel	.00	96.96
Holston Valley	.00	.00
Hulen	783.00	160.18
Johnson City, First	1,542.52	1,907.00
Jonesboro, First	3,672.14	3,031.00
Jonesboro, Second	75.00	123.45
King Springs	176.37	.00
Lovelace	294.60	.00
Midway	165.05	496.00
Mill Creek	.00	.00
Mount Holston	139.39	301.07
Mount Zion	375.13	65.91
Mountain View	.00	412.00
Muddy Creek	146.70	355.00
New Lebanon	.00	503.00
New Salem	508.68	194.25
New Victory	.00	200.00
Ninth Street	2,219.95	305.05
North Johnson City	2,385.36	1,328.50
Oak Dale	227.40	170.00
Oak Glen	100.00	44.00
Oak Grove	1,470.00	1,160.00
Oak Hill	779.91	971.11
Omega	43.00	.00
Pinecrest	1,756.85	2,365.38
Piney Flats	422.78	1,903.71
Pleasant Grove	261.20	58.00
River Bend	393.47	79.25
Roan Hill	551.89	416.00
Shady Grove	.00	.00
Shallow Ford	744.94	1,535.35
Skyline Heights	1,928.67	1,729.47
Snow Memorial	876.78	740.64
Solomons Temple	.00	87.93
Southside	676.00	1,850.00
Southwestern	3,322.11	2,023.13
Sulphur Springs	1,236.20	

Church	Cooperative Program	Designated
Strawberry Pls., First..	584.52	888.00
Swans Chapel.....	.00	474.21
Talbott.....	1,853.00	1,440.29
White Pine, First.....	3,371.40	1,141.36
Total.....	39,129.77	38,697.03

JUDSON

Cedar Hill.....	.00	.00
Harmony.....	.00	.00
Liberty.....	.00	.00
Maple Grove.....	.00	.00
Missionary Ridge.....	.00	.00
Mount Zion.....	.00	.00
New Hope.....	822.55	187.00
Old New Hope.....	150.00	450.00
Pleasant Ridge.....	.00	.00
Walnut Grove.....	.00	35.00
Total.....	972.55	672.00

KNOX COUNTY

Alice Bell.....	699.85	1,128.73
Arlington.....	5,097.32	6,763.02
Atkins.....	120.00	.00
Ball Camp.....	2,425.74	120.00
Basswood.....	.00	.00
Boys Mountain.....	.00	.00
Baumont Avenue.....	83.30	824.86
Beaver Dam.....	3,513.82	5,689.33
Bell Avenue.....	2,500.00	488.00
Belmont Heights.....	.00	.00
Berthany.....	.00	.00
Black Oak Heights.....	6,000.00	3,368.37
Blount Avenue.....	.00	.00
Bon View.....	20.00	93.50
Braville.....	350.00	.00
Brookview.....	400.00	1,221.51
Buffet Heights.....	.00	.00
Burnetts Creek.....	.00	.00
Callahan Road.....	.00	.00
Calvary.....	5,740.60	3,144.07
Cedar Bluff.....	148.43	.00
(B) Central.....	12,000.00	29,719.44
Central of Fin. City.....	21,000.00	24,897.07
Churchwell Avenue.....	938.39	106.00
City View.....	4,594.36	1,068.81
Clear Springs.....	2,714.38	1,724.74
Community.....	.00	.00
Concord, First.....	15,282.77	14,079.02
Copper Ridge.....	58.62	32.00
Cornerstone.....	99.00	100.00
Carryton.....	3,957.76	1,575.84
Cumberland.....	6,369.00	8,476.46
East Sunnyview.....	.00	.00
Ebenezer.....	881.29	731.50
Elm St.....	296.54	536.05
Euclid Avenue.....	1,841.90	5,149.89
Fairview.....	1,092.46	848.26
Fair Havens.....	.00	.00
Faith and Hope.....	63.41	100.00
Farragut.....	60.00	125.00
Fellowship.....	437.07	1,038.06
Fifth Avenue.....	1,000.00	1,005.25
Flint Gap.....	175.18	332.30
Fort Hill.....	200.00	575.00
Fort Sanders.....	597.00	.00
Fountain City, First.....	1,000.03	1,346.73
Galilee.....	1,753.02	4,444.38
Gallaher Memorial.....	331.31	114.00
Gayland Heights.....	370.51	695.00
Gillespie Avenue.....	1,428.87	1,529.32
Glenwood.....	3,000.00	2,359.37
Grace.....	7,889.14	5,386.30
Grassy Valley.....	987.59	322.00
Gravesend.....	815.84	145.37
Greenway.....	1,196.30	1,298.09
Grove City.....	.00	.00
Grove Heights.....	.00	.00
Grove Hill.....	408.10	268.50
Hill Crest.....	130.00	30.66
Hines Valley.....	.00	.00
Holt Avenue.....	.00	.00
Hollywood Hills.....	245.00	602.00
Holston.....	2,265.11	1,103.30
House Mountain.....	.00	.00
Immanuel.....	3,361.35	1,854.00
Inskip.....	3,000.00	7,563.11
Island Home.....	1,100.14	.00
Jersey Ave.....	.00	.00
John Sevier.....	357.50	2,134.62
Jones Chapel.....	75.00	1,252.50
Knoxville, First.....	15,400.00	44,732.15
Knoxville, Second.....	1,264.67	5.00
Knoxville, Third.....	332.77	329.63
Lake Country.....	185.96	84.50
Lincoln Park.....	11,859.16	5,962.45
Linden Avenue.....	127.27	469.69
Little Flat Creek.....	632.10	555.10
Lonsdale.....	350.00	399.00
Loveland.....	337.79	.00
Lyons Creek.....	2,183.56	.00
Marble City.....	191.66	802.72
Marbledale.....	595.89	759.29
Mars Hill.....	1,251.79	1,517.59
Mascot.....	931.83	625.00
McCalla Avenue.....	5,324.99	71.00
Meadow View.....	110.00	380.00
Meridian.....	10,428.95	8,833.31
Middlebrook Pike.....	105.00	21.00
Midway.....	11.00	.00
Miracle.....	.00	.00
Moreland Heights.....	.00	.00
Mount Carmel.....	920.06	2,666.35
Mount Harmony.....	3,140.12	1,493.98
Mount Olive.....	5,536.60	12,217.12
Mount Olive, East.....	.00	.00
Mountain View.....	404.33	.00
New Hope.....	.00	.00
New Hopewell.....	2,366.06	2,195.90
New Salem.....	.00	.00
North Acres.....	.00	250.44

North Hills.....	.00	.00
North Knoxville.....	5,588.91	390.00
North Side.....	.00	.00
Northwest.....	210.00	513.56
Norwood.....	600.00	2,000.00
Oakwood.....	2,250.00	637.53
Parklane.....	890.75	431.78
Parkway.....	4,401.29	1,500.00
Peoples Missionary.....	61.97	72.00
Piney Grove.....	.00	1,525.25
Powell, First.....	4,180.78	.00
Ramsey Heights.....	258.57	.00
Reunion.....	415.22	85.10
Ridgegale.....	536.01	727.00
Ridgeview.....	1,378.56	1,250.53
Riverdale.....	1,074.00	911.00
Riverview.....	1,336.94	2,565.96
Rocky Hill.....	1,750.03	.00
Roseberry.....	461.51	1,144.23
Ruggles Ferry.....	.00	.00
Salem.....	4,886.00	350.05
Scottish Pike.....	20.00	.00
Seven Islands.....	.00	657.43
Sevier Heights.....	6,302.16	9,597.48
Sevier Home.....	719.54	172.00
Sharon.....	1,666.66	3,060.17
Smithwood.....	4,600.00	10,844.01
South Knoxville.....	3,000.00	6,813.73
Stoney Point.....	170.00	.00
Sunset Heights.....	.00	150.00
Tarklin Valley.....	.00	.00
Tennessee Avenue.....	394.00	374.00
Third Creek.....	582.43	230.00
Thorn Grove.....	617.16	.00
Three Point.....	.00	.00
Timothy Street.....	391.47	434.34
Tower Heights.....	80.00	.00
Trinity.....	1,593.15	699.75
Tuckahoe.....	.00	.00
Union.....	2,238.82	2,000.00
Unity.....	.00	75.50
(B C) Valley Grove.....	.00	1,028.33
(C H) Valley Grove.....	8,411.87	6,178.06
Vestal.....	.00	.00
Wallace Memorial.....	34,018.81	39,713.30
Washington Avenue.....	1,096.20	768.00
Washington Pike.....	2,670.00	2,076.00
West End.....	.00	.00
West Haven.....	4,292.22	.00
West Hills.....	3,800.00	2,511.06
West Knoxville.....	.00	.00
West Lonsdale.....	3,788.64	10,000.00
West Side.....	.00	710.63
Association.....	.00	35.91
Total.....	305,198.17	344,116.24

LAWRENCE COUNTY

Barnesville.....	5.00	.00
Beech Grove.....	.00	.00
Bethel.....	.00	500.00
Blooming Grove.....	20.00	225.00
Bonnetown.....	200.00	385.00
Brace.....	60.00	128.50
Center Point.....	.00	200.00
Deerfield.....	321.49	318.25
Ethridge First.....	205.91	395.00
Evas Chapel.....	190.93	.00
Faith.....	1,200.00	823.00
Five Points.....	45.00	.00
Gum Springs.....	712.92	.00
Highland Park.....	3,128.48	1,185.75
Immanuel.....	1,061.31	1,368.97
Iron City First.....	480.00	500.00
Lawrenceburg, First.....	6,772.03	4,260.35
Leoma.....	709.12	1,420.00
Liberty Grove.....	.00	.00
Loretto, First.....	389.38	.00
Macedonia.....	.00	.00
Mars Hill.....	843.41	1,100.00
Meadow View.....	300.00	627.92
Mount Horeb.....	394.00	12.75
New Prospect.....	.00	330.00
O. K.....	.00	150.00
Oak Hill.....	.00	175.00
Park Grove.....	214.89	175.00
Pine Grove.....	100.00	47.00
Pleasant Grove.....	.00	.00
Ramah.....	105.00	.00
St. Joseph, First.....	469.48	407.41
Summertown.....	600.86	704.35
West Point.....	137.55	.00
Total.....	18,666.76	15,264.25

LOUDON COUNTY

Antioch.....	.00	254.62
Ballards Chapel.....	168.00	104.00
Beals Chapel.....	253.83	500.00
Bethany.....	1,755.00	.00
Blairland.....	2,064.11	3,416.94
C. Calvary.....	5,822.65	1,029.95
L. Calvary.....	.00	.00
Cave Creek.....	.00	45.00
Corinth.....	801.79	1,076.64
Dixie Lee.....	1,901.71	1,316.00
Dogwood.....	.00	.00
East Hills.....	324.55	168.50
Everett Road.....	207.07	138.77
Friendship.....	.00	1,069.59
Highland Park.....	.00	20.00
Kingston Pike.....	617.70	93.95
Lenoir City, First.....	15,521.26	11,938.43
Lenoir City, Second.....	352.91	.00
Loudon, First.....	871.99	1,761.01
Morganton.....	215.65	.00
Mount Pleasant.....	39.70	141.91
Mount Zion.....	343.15	693.00
Mountain View.....	.00	.00
Nelson Street.....	.00	250.28
New Midway.....	169.98	206.74
New Providence.....	2,233.00	600.00

Oral.....	624.00	1,059.25
Philadelphia, First.....	1,636.13	150.00
Pine Grove.....	.00	35.50
Pleasant Hill.....	4,722.89	1,642.89
Prospect.....	899.47	1,000.00
Riverview.....	313.28	200.00
Silver Ridge.....	.00	180.84
South Holston.....	.00	.00
Stockton Valley.....	207.00	322.00
Stoney Point.....	.00	.00
Union Fork Creek.....	282.08	100.00
Vaughns Chapel.....	337.73	496.46
West Broadway.....	.00	119.77
Association.....	.00	1,000.00
Total.....	42,686.63	31,132.04

McMINN-MEIGS

Antioch.....	1,265.76	1,821.59
Athens, First.....	22,128.36	16,711.98
Bethel Springs.....	.00	.00
Bethsaida.....	.00	.00
Brookhill.....	150.00	95.09
Calhoun, First.....	2,286.86	1,296.66
(D) Calvary.....	.00	200.00
(E) Calvary.....	30.00	170.00
Cambria.....	.00	.00
Central.....	1,184.26	729.80
Clay Hill.....	.00	300.00
Clear Springs.....	379.25	680.00
Clearwater.....	374.31	450.66
Cog Hill.....	.00	.00
Conasauga.....	132.57	300.00
Cotton Port.....	326.00	611.00
Dixie Avenue.....	.00	115.20
Double Springs.....	.00	443.15
East Athens.....	4,827.17	10.00
East Vista.....	.00	325.00
East View.....	225.00	650.00
Eastonalee.....	6,012.49	1,869.10
Englewood, First.....	1,500.00	300.00
Etowah, First.....	1,650.00	3,761.84
Five Point.....	.00	.00
Friendship.....	.00	.00
Good Hope.....	60.12	500.00
Good Springs.....	1,679.26	424.47
Hawessee.....	.00	.00
Idlewild.....	385.73	.00
Lakeview.....	387.48	176.45
Lamontville.....	.00	15.00
Manilla Chapel.....	.00	50.00
Marshall Hill.....	.00	.00
Mc Mahan Calvary.....	871.20	174.00
Mt. Harmony #1.....	412.34	190.88
Mt. Harmony #2.....	353.66	815.00
Mount Pisgah.....	215.58	1,359.30
Mount Verd.....	441.55	.00
New Bethel.....	60.00	115.00
New Hopewell.....	.00	106.20
New Zion.....	50.00	.00
Niota, First.....	480.00	1,282.07
North Athens.....	3,897.55	1,966.13
North Etowah.....	6,870.87	4,103.01
Oak Grove.....	750.47	2,200.00
Old Salem.....	200.00	.00
Parkway.....	159.72	46.30
Pond Hill.....	.00	.00
Pope Avenue.....	310.00	.00
Riceville, First.....	1,250.72	763.00
Rock View.....	.00	.00
Rocky Mount.....	119.90	25.00
Rogers Creek.....	89.10	.00
Sanford.....	.00	47.00
Shiloh.....	.00	121.00
Short Creek.....	64.24	181.00
South Liberty.....	590.64	170.88
Stephensville.....	.00	.00
Union Grove #1.....	.00	.00
Union Grove #2.....	849.00	527.60
Union Hill.....	.00	.00
Union Minn.....	.00	239.02
Valley Road.....	.00	.00
Valley View.....	.00	.00
Walnut Grove.....	883.30	1,100.00
West End.....	95.10	300.19
West View.....	300.00	586.10
Wildwood.....	882.78	551.00
Zion Hill.....	.00	52.19
Association.....	.00	1,733.55
Total.....	65,182.34	50,762.41

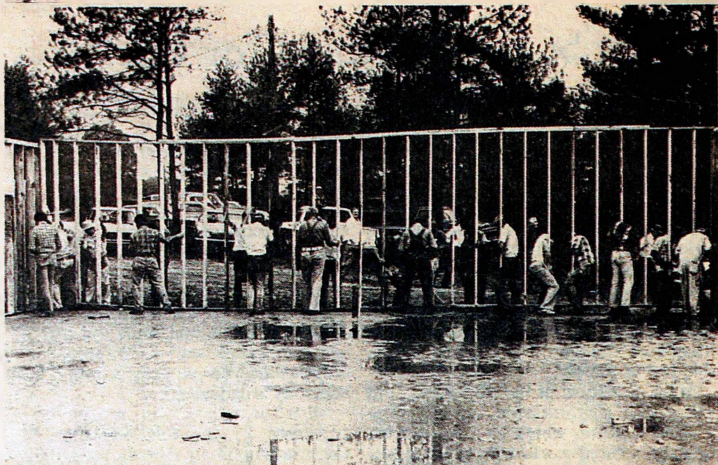
MADISON-CHESTER

Antioch.....	59.15	48.65
Ararat.....	854.81	2,061.00
Beech Bluff.....	123.10	448.15
Beech Grove.....	48.06	23.00
Bemis, First.....	9,464.62	2,873.21
Bethel.....	.00	.00
Bible Grove.....	225.00	.00
Calvary.....	5,320.03	2,363.71
Clover Creek.....	583.44	159.63
Cotton Grove.....	764.35	358.97
East Jackson.....	60.00	205.00
East Laurel.....	382.47	102.07
East Union.....	2,316.73	.00
Englewood.....	10,700.47	14,709.00
Enville.....	469.54	261.15
(B B) Friendship.....	623.14	759.00
(M) Friendship.....	196.15	279.00
Henderson, First.....	1,197.83	3,030.00
Highland Park.....	3,107.37	2,155.25
Hillcrest.....	2,195.55	3,009.00
Jackson, First.....	.00	12,062.00
Liberty Grove.....	2,364.43	2,411.00
Madison.....	1,873.14	1,897.00
Moleaus.....	6,407.27	3,297.00
Maple Springs.....	1,029.27	2,205.00
Merced.....	.00	.00
Meridian.....	200.00	.00
Mifflin.....	60.47	112.00

Church	Cooperative Program	Designated	Church	Cooperative Program	Designated	Church	Cooperative Program	Designated	Church	Cooperative Program	Designated
Livesays Chapel.....	.00	.00	Madison Heights.....	2,781.45	1,167.10	Hickman.....	431.00	913.77			
McBride.....	.00	.00	Madison, First.....	3,511.00	4,268.27	Jared.....	.00	.00			
Midtown Missionary.....	.00	.00	Mill Creek.....	220.41	261.34	Lancaster.....	.00	30.00			
Mount Pisgah.....	.00	.00	Nashville, First.....	31,935.73	22,379.31	New Middleton.....	684.66	400.00			
Mountain View No 1.....	.00	.00	Nashville, Third.....	946.12	426.45	Peytons Creek.....	154.00	536.00			
Mulberry Gap.....	256.99	326.71	Neelys Bend.....	1,880.29	243.23	Ridgleton.....	154.07	.00			
New Bethel.....	.00	.00	New Hope.....	1,619.06	1,133.28	Rome.....	361.42	242.50			
New Hope.....	.00	25.00	Old Hickory, First.....	8,633.09	8,508.35	Total.....	4,398.47	8,341.61			
New Life.....	.00	256.78	Park Avenue.....	3,833.33	7,837.20						
New Salem Missionary.....	.00	.00	Parkway.....	1,951.70	2,129.05						
North Hills.....	.00	.00	Pegram, First.....	655.68	204.00						
Oak Hill.....	.00	.00	Paytonville.....	17.00	.00						
Old Spruce Pine.....	.00	50.00	Plemonsia View.....	212.70	305.62						
Panther Creek.....	.00	.00	Radford.....	.00	25.00						
Paw Paw Grove.....	.00	.00	Radnor.....	800.00	.00						
Piney Grove.....	.00	.00	Rayon City.....	518.96	.00						
Pleasant Valley.....	.00	.00	Richland.....	1,080.62	1,462.75						
Pleasant View.....	.00	.00	Riverside.....	1,354.05	.00						
Pond Hill.....	.00	.00	Rosedale.....	1,306.35	.00						
Power House.....	.00	.00	Salem.....	.00	600.00						
Providence.....	.00	.00	Saturn Drive.....	7,046.93	2,939.93						
Richardson Creek.....	.00	.00	Scottsboro.....	398.84	161.70						
Rock Bridge.....	.00	.00	Shelby Avenue.....	2,348.33	2,225.35						
Rock Haven.....	.00	.00	Smith Springs.....	.00	1,429.00						
Rocky Summit.....	.00	.00	South Gate.....	23.00	100.80						
Sandy Springs.....	.00	.00	Temple.....	1,705.00	3,545.00						
Sartain Springs.....	.00	.00	Tulip Grove.....	300.00	172.46						
Sharon Missionary.....	.00	100.00	Tusculum Hills.....	5,734.32	2,294.37						
Solid Rock.....	.00	.00	Two Rivers.....	64,371.14	20,585.81						
Spruce Pine.....	.00	.00	Una.....	2,333.33	.00						
Stoney Gap.....	.00	.00	Union Hill.....	823.06	.00						
Stoney Ridge Missionary.....	.00	100.00	Valley View.....	1,794.97	2,768.56						
Sulphur Springs.....	.00	.00	Walker Memorial.....	3,724.92	1,107.00						
Thorn Hill.....	.00	.00	West Nashville.....	239.19	62.00						
Trent Valley.....	.00	.00	West Trinity Lane.....	163.53	47.87						
Unicoi.....	.00	.00	West View.....	222.15	200.75						
Union.....	.00	200.00	Westwood.....	2,625.00	.00						
Walkers.....	.00	.00	White Bluff, First.....	.00	214.85						
Wallens Bend.....	.00	.00	Whitsets Chapel.....	880.39	197.77						
Yellow Branch.....	.00	.00	Whitworth Memorial.....	.00	.00						
Association.....	.00	278.87	Woodbine.....	4,190.77	1,141.56						
Total.....	256.99	1,773.08	Woodcock Memorial.....	621.56	268.10						
			Woodmont.....	41,003.88	2,485.63						
			Total.....	485,842.15	240,645.50						

Church	Cooperative Program	Designated	Church	Cooperative Program	Designated	Church	Cooperative Program	Designated	Church	Cooperative Program	Designated
SEVIER COUNTY			La Belle Haven	4,845.10	4,644.93	Pleasant Grove	.00	61.00	Rocky Springs	225.00	1,154.00
Alder Branch	1,654.86	1,603.00	La Belle Place	3,360.53	.00	Pugh Flat	.00	.00	Rural Vale	.00	.00
Antioch	484.80	793.46	Lakeshores	394.63	415.00	Walnut Grove	.00	.00	Shady Grove	.00	.00
Banner	130.48	400.00	Lamar Heights	2,732.20	5,360.01	Total	2,554.46	2,494.96	Sheltons Grove	.00	.00
Beech Springs	322.43	1,692.41	Lamar Terrace	1,000.00	.00	STONE			Shoal Creek	.00	32.81
Bells Chapel	94.63	.00	Leaclair	6,894.84	2,630.45				South Madisonville	113.20	339.60
Bethel	476.46	1,247.01	Leewood	13,749.97	9,560.87				Sweetwater, First	10,723.85	9,503.07
Blowing Cave	16.44	.00	Longcrest	372.57	616.50				Tellico	.00	.00
Boyd's Creek	459.16	432.00	Lucy	650.00	1,477.20	Algood, First	659.00	.00	Tellico Plains, First	1,706.63	818.00
Bradleys Chapel	.00	.00	Macon Road	.00	.00	Bangham Heights	594.98	223.67	Tewis Springs	52.00	421.00
Calvary	314.00	.00	Mc Lean	800.00	1,597.85	Baxter, First	136.07	125.00	Towee Falls	.00	.00
Conner Heights	.00	.00	Memphis, First	12,925.00	61,959.12	Bear Creek	.00	.00	Trinity	.00	.00
Coveмонт	14.00	.00	Memphis, Second	7,214.66	1,654.91	Brotherton	355.88	600.00	Unicoi	43.50	59.03
Dripping Springs	171.65	.00	Merton Avenue	3,891.45	3,471.76	Cane Creek	75.00	82.22	Union Grove	25.00	100.00
Dupont	.00	.00	Millington, First	10,217.68	5,249.47	Caneey Fork	558.96	795.00	Union Hall	.00	.00
French Broad Valley	.00	.00	Millington, Second	523.19	50.00	Cedar Hill	142.80	939.00	Vonore	1,018.93	1,179.18
Friendship	105.18	.00	Mountain Terrace	4,290.15	1,153.10	Central Emmanuel	.00	.00	Watson Chapel	98.32	.00
Gatlinburg, First	3,400.00	639.33	Mullins Station	1,970.17	1,063.75	Cookeville, First	10,407.55	19,340.96	Westside	12.01	13.52
Gists Creek	202.97	.00	National Avenue	5,643.43	3,647.55	Dillard's Creek	.00	.00	Williamsburg	.00	.00
Gum Stand	26.96	.00	New Allen Road	652.60	297.00	Dodson Branch	202.62	.00	Total	24,927.55	31,543.10
Henderson Chapel	.00	300.00	North Frayser	150.00	.00	Eastwood	1,173.45	209.35	TENNESSEE VALLEY		
Hills Creek	138.58	52.88	Northview	4,384.64	1,906.37	Grainebora, First	188.66	161.50	Bethel	136.18	200.00
Howards View	.00	.00	Oakhaven	7,092.48	592.80	Hampton Cross Roads	521.05	1,021.19	Central	1,007.00	200.00
Hurst Chapel	.00	.00	Oaklawn	1,651.39	1,129.11	Johnson	.00	.00	Clear Creek	.00	116.25
Jones Chapel	130.00	450.00	Oakville Memorial	3,466.06	2,564.80	Midway	600.00	261.25	Cranmore Cove	.00	100.00
Knob Creek	322.58	534.15	Orchi	714.86	.00	Mill Creek	.00	.00	Dayton, First	5,668.83	688.26
Laurel Branch	.00	.00	Park Ave	7,795.61	4,065.00	Monterey, First	4,655.44	665.60	Garrison	.00	850.00
Laurel Grove	47.50	30.50	Parkway Village	8,293.57	289.90	Nash Grove	413.00	284.25	Grandview	278.79	165.00
Lebanon	.00	100.00	Peabody	1,105.00	3,121.69	New Home	662.00	1,139.11	Graysville	838.82	332.10
Little Cove	.00	.00	Poplar Avenue	471.22	653.22	Poplar Grove	494.19	623.32	High Point	110.41	220.00
Maples Branch	30.00	.00	Prescott Memorial	80.00	.00	Poplar Springs	160.52	.00	Lake Drive	211.37	845.00
Millican Grove	212.10	793.00	Raleigh	8,591.78	655.00	Rocky Point	113.99	.00	Mount Vernon	.00	730.00
Mount Zion	177.97	225.00	Raleigh Heights	.00	.00	Sand Springs	306.92	.00	Mount Zion	.00	.00
Mountain View	190.97	202.47	Raleigh North	4,076.07	11,837.50	Silver Point	256.78	375.00	New Union	1,929.79	841.90
New Era	206.48	839.60	Range Hills	2,173.50	1,502.02	Stevens Street	363.68	446.05	Ogden	.00	150.00
New Salem	180.00	85.85	Richland	1,540.94	2,270.92	Verble	.00	75.00	Penning	69.22	1,025.83
Old Fashioned	.00	.00	Ridgecrest	.00	1,105.94	Washington Ave	1,074.00	461.90	Saint Clair	149.03	193.00
Oldhams Creek	176.50	64.00	Ridgeway	6,600.00	13,229.76	West View	600.00	56.25	Sole Creek	.00	.00
Paw Paw Hollow	138.07	285.35	Rose Hill	539.00	.00	Wilhite	.00	250.00	Salem	462.72	600.00
Pearl Valley	.00	.00	Rosemark	1,506.00	.00	Woodcliff	.00	.00	Smyrna	513.30	634.14
Pigeon Forge, First	4,356.61	2,914.09	Rugby Hills	4,564.89	835.12	Total	24,716.54	28,135.62	Spring City, First	4,819.48	1,867.70
Providence	.00	.00	Scenic Hills	1,591.33	2,559.25	SULLIVAN			Walden Ridge	543.53	1,396.00
Red Bank	.00	.00	Shelby Forest	1,617.87	839.00	Bloomingdale	1,813.50	331.27	Washington	393.30	105.00
Red Bank, First	.00	75.00	Sherwood	631.92	704.89	Calvary	6,585.85	4,417.21	Wolf Creek	1,003.73	706.19
Richardsons Cove	125.40	.00	Sky View	1,426.13	.00	Cedar Grove	300.00	542.65	Yellow Creek	306.56	1,350.96
Roaring Fork	645.00	711.00	Southland	12,305.69	9,365.71	Colonial Heights	12,080.00	8,150.57	Association	.00	87.50
Sevierville, First	19,590.61	12,258.70	Southmoor	.00	.00	Fort Robinson	6,180.71	4,109.53	Total	18,845.83	13,603.41
Sevierville, Second	187.32	712.40	Speedway Terrace	1,776.26	4,156.21	Glenwood	1,942.12	1,363.04	TRUETT		
Shady	293.00	244.16	Summer Ave	446.84	525.00	Gravelly	.00	.00	Cedar Grove	439.00	128.00
Shiloh	.00	400.00	Tchulahoma	.00	.00	Greenville	.00	974.11	Immanuel	.00	87.24
Sims Chapel	300.00	323.06	Temple	5,632.16	8,413.08	Indian Springs	10,747.75	1,779.09	Liberty	114.48	228.96
Sugar Loaf	86.50	.00	Towering Oaks	600.00	280.64	Kingsport, First	36,000.00	21,955.15	McEwen, First	907.20	3,426.50
Trinity	.00	.00	Trafalgar Village	1,523.14	281.29	Litz Manor	4,065.00	652.75	Oak Grove	290.09	573.50
Union Valley	400.03	138.43	Trinity	5,000.01	751.25	Long Island	122.00	57.00	Sylvia	1,198.50	335.12
Valley View	50.00	150.00	Union Avenue	4,333.32	12,653.33	Lynn Garden	2,632.18	1,459.64	Trace Creek	2,679.93	817.00
Waldens Creek	50.00	67.00	Victory Heights	500.00	.00	Reservoir Road	1,026.00	862.47	Waverly, First	3,650.95	2,237.15
Walnut Grove	250.00	122.00	Walnut Grove	465.71	80.00	Springdale	448.49	577.03	Total	9,280.15	7,833.47
Wears Valley	431.68	3,251.60	Wells Station	6,090.20	5,077.21	Sullivan	237.22	331.10	UNION		
Zion Grove	.00	.00	West Frayser	300.00	243.00	Summersville	1,366.07	560.00	Bear Cove	1,438.47	550.00
Zion Hill	699.94	1,017.22	White Station	2,210.00	2,058.70	Unnysville	581.00	250.00	Bethel	124.12	.00
Total	37,669.25	35,142.89	Whitehaven	19,332.93	15,216.60	Vernon Heights	.00	5,020.42	Boiling Springs	132.88	107.00
			Whitten Memorial	750.00	.00	West Colonial Hills	700.00	.00	Doyle, First	147.25	.00
			Woodstock	628.77	235.00	West View	555.00	856.00	Greenwood	236.00	229.00
			Total	501,555.71	432,032.23	Association	.00	21.00	Gum Springs	387.70	1,121.00
						Total	87,640.90	54,425.60	Hickory Valley	10.00	200.00
SHELBY COUNTY			SHILOH			SWEETWATER			Laurel Creek	68.10	200.00
Agape	2,621.72	104.36	Adamsville, First	1,606.95	2,862.41	Altoona	.00	.00	Liberty	36.37	.00
Ardmore	12,378.88	6,623.43	Bethel Springs, First	353.07	.00	Antioch	.00	.00	Pistole	126.41	300.00
Arlington	563.96	238.12	Butler Chapel	300.00	99.39	Beatty's Chapel	.00	.00	Pleasant Hill	30.00	.00
Audubon Park	9,418.72	8,642.26	Calvary	.00	.00	Bethlehem	166.75	116.75	Quebeck	151.91	.00
Balmoral	4,621.42	5,080.31	Center Hill	472.53	.00	Big Creek	.00	100.00	Sparto, First	2,038.45	3,548.08
Bartlett	13,877.53	7,118.28	Chapel Hill	.00	.00	Calvary	.00	140.81	Spencer, First	284.24	198.55
Bellvue	50,950.11	63,459.92	Chewalla	419.13	471.23	Cane Creek	.00	.00	Total	5,211.90	6,453.63
Benninton Park	75.00	160.00	Clear Creek	.00	299.18	Cedar Fork	1,477.95	1,746.00	WATAUGA		
Berclair	7,297.69	9,149.75	Counce, First	2,318.58	2,111.08	Cedar Valley	443.01	289.58	Antioch	.00	.00
Beverly Hills	3,765.27	4,930.02	Crump, First	258.71	300.00	Chestua	503.33	1,000.00	Bakers Gap	93.58	60.60
Big Creek	356.22	.00	Curry Chapel	.00	.00	Chilhowee	.00	.00	Beck Mountain	670.71	.00
Blue Ridge Park	767.75	134.68	Falcon	84.00	10.00	Christianburg	204.65	382.41	Bethany	347.00	90.00
Boulevard	4,297.25	2,875.55	Forty-Forks	.00	.00	Citico	248.00	185.82	Bethel	112.00	251.00
Broadmoor	18,331.13	13,495.27	Friendship	75.00	10.00	Coker Creek	.00	.00	Big Spring	854.50	1,126.50
Broadway	4,546.33	1,519.34	Good Hope	.00	75.00	Compromise	.00	30.00	Bilmore	1,891.75	1,000.00
Brunswick	3,310.00	357.56	Gravel Hill	878.93	4,254.40	Cumprills	.00	.00	Butler	501.03	259.67
Bunton Street	129.43	.00	Hopewell	1,354.84	1,200.00	Druil Hills	.00	.00	Caldwell Springs	.00	.00
Calvary	375.00	179.00	Lakeview	63.00	679.17	Ebenezer	175.00	100.00	Calvary	1,685.09	1,831.20
Capleville	.00	.00									

For Information and/or Reservations
Write or Call
Ridgecrest Baptist Conference Center
Box 128
Ridgecrest, NC 28770
(704) 669-8022



CHURCH RAISING — First Baptist Church of Fairview, Ga., a suburb of Atlanta, received the assistance of 120 men in building the church's second interim structure. By sunset the same day, the building stood.

Medicare Supplement Information

TO: ALL MEDICARE MEMBERS

SUBJECT: NEW CHANGES IN MEDICARE THAT AFFECT YOU

Dear Medicare Member:

The Social Security Administration has recently announced certain changes that were made in the MEDICARE program — changes which will directly or indirectly affect every MEDICARE member.

If you do not fully understand what benefits are payable under MEDICARE, please return the attached card at once so that we may furnish this vital information about the changes in MEDICARE, along with a detailed description of a privately sponsored MEDICARE SUPPLEMENT INSURANCE PLAN.

We will also furnish you with information about a program designed to help relieve the MEDICARE member funeral expense. Do you know that Social Security can help pay funeral expense? This important information will be furnished without cost or obligation.

ARE YOU UNDER 65?

WE ALSO HAVE

A \$100.00 PER DAY HOSPITAL EXPENSE PLAN

MAIL CARD PROMPTLY!

MEDICARE SUPPLEMENT INFORMATION REQUEST FORM

- Yes ☐ I would like further information concerning a protection plan that helps cover the charges Medicare does not pay.
- Yes ☐ I would like further information on how Social Security can help pay funeral expense.
- Yes ☐ I would like further information on \$100.00 per day hospital expense plan.

Name _____ Date of Birth is: _____

Address _____

City _____ State _____ Zip _____

CUT ALONG DOTTED LINE AND MAIL

DETATCH AND MAIL TO:

CIS Insurance

P. O. Box 110383
Nashville, Tennessee 37211

For return address you may cut out and attach to envelope.

MADE AVAILABLE BY:



Continental Insurance Service, Inc.
3709 NOLENSVILLE ROAD
NASHVILLE, TENN. 37211
PHONE (615) 834-8000



UNDERWRITTEN BY:
PIONEER LIFE INSURANCE CO.
OF ILLINOIS

Building begun at sunrise; church dedicated at sunset

ATLANTA (BP) — On an overcast Saturday morning, 120 men from six churches gathered on a vacant lot at First Baptist Church of Fairview, a suburb of Atlanta, facing a huge task: to build the church's second interim building before sunset.

Ten hours later, the 40-foot by 90-foot structure was standing.

Church members had little doubt it could be done because a year earlier, South Metro Baptist Association had erected the first unit of the church, also within a day.

Fairview Baptist Church evolved out of a 1978 survey and home Bible study led by Carlton Burnett. The Bible study quickly outgrew homes and about six months later, the group bought property. In October 1979, they sent out their first call for help in raising a building.

The church received a preconstructed roof, a gift from a neighboring church, that "was exactly double the size of the proposed building," said Bob Yeager, Fairview's building committee chairman. So the men built the church to fit the roof.

Financial support came from co-sponsoring Rock Baptist Church in Rex, Ga., in addition to individual contributions. Burnett described it as "the finest experience of cooperation among neighboring churches I've ever seen. The furnishings — chairs, carpet, furnaces, and even the organ — were given to us by local churches.

Located in the fastest growing community in Henry County, Fairview proved drawing people wasn't the problem — space was. In less than a year, the church expanded from 15 members

to 126, and out grew its facilities. It is the only Southern Baptist church in a 10-mile radius.

Fairview decided to use the "barn-raising" method for their second building, and again turned to fellow Baptists for help. First Baptist Church of Stockridge, Ga., co-sponsor of Fairview, added \$20,000 for materials to Fairview's own \$5,000 building fund, allowing the church to build its second debt-free building.

The spirit of cooperation continued. A local bridge company furnished a crane to lift gables to the roof; men with hammers materialized; pre-teenage boys were on hand to hold boards in place and occasionally drive a nail. At noon, women from the association's churches supplied a hearty meal for workers.

Construction finished about 5 p.m., leaving enough daylight for the weary workers to hold a prayer and praise service in the new building.

The new sanctuary seats 300 people. Already Burnett comments, "We hope to fill it soon. People are just beginning to build in this area, and we're going to be here to greet them."

Adapted from Missions USA magazine.

Belew to teach at Yale

ATLANTA, Ga. (BP) — Wendell Belew, director of the missions ministries division of the SBC Home Mission Board, has been invited to teach at Yale University's divinity school during the spring semester of 1981.

Belew will teach a course on "churches on mission" at Yale.



RETREAT AT KARIBA — Jeff Fray, who grew up as a missionary kid (MK) in Zimbabwe, leads other MKs from Zimbabwe and Zambia during a retreat on Zimbabwe's side of Lake Kariba. Fray, who had returned to Zimbabwe as a volunteer, is the son of Bud Fray, the Foreign Mission Board's associate to the director for eastern and southern Africa.

Border no longer divides MKs

KARIBA, Zimbabwe — The end of the guerrilla war in Zimbabwe meant missionary children (MKs) in Zimbabwe and Zambia could hold a joint retreat on the Zimbabwe shore of Lake Kariba, the lake which separates the two countries.

The six Zambia MKs and nine Zimbabwe MKs were able to meet at Kariba only after the border, which had been closed for almost seven years because of the war, reopened in April 1980.

Kariba, the nearest recreation area to each group, produces much of the electricity used by both countries, said Beth

Butler, Southern Baptist missionary journeyman from New Mexico who met with the group.

"Just being with other American kids was a treat for many of the MKs," said Miss Butler. Because many attend African churches, they enjoy times of growth in retreat situations when they are taught in English.

"Another treat for the MKs," she said, "was the main topic of the retreat — Christian dating." The group discussed God's plans for dating and marriage as well as the difficulties of dating in different countries and cultures.