

# Baptist and Reflector

Vol. 148/No. 9/March 3, 1982

News journal of Tennessee Baptist Convention



**LEARNING LOVE** — Youngsters at Baptist Friendship House in New Orleans learn to "love one another" from Carolyn McClendon, director. Sponsored by Louisiana Baptists and the Home Mission Board, the center provides daily care and Christian role models for children from a high-crime area near the French Quarter. (HMB photo by Paul Obregon.)

## Executive Committee sets 1985-90 goals

NASHVILLE (BP) — During its February meeting, the Executive Committee of the Southern Baptist Convention rejected agency status for Baptist Press, declined to consider building a center in Jerusalem, and set Bold Mission Thrust goals for 1985-1990.

The Executive Committee will recommend to messengers at the 1982 annual meeting in New Orleans that separate agency status not be granted to the denomination's news service, Baptist Press.

Committee members approved a recommendation to "continue to operate Baptist Press as a part of the Executive Committee with the assurance that Baptist Press will continue to serve Southern Baptists with the support and freedom necessary to maintain credibility and effectiveness."

The proposal to grant agency status to Baptist Press, which has operated as part of the Executive Committee since 1946, was made during the 1981 annual meeting in Los Angeles by messenger Jimmy Stroud of Knoxville. The motion, which was referred to the Executive Committee for study, urged creation of a separate agency "in order that it (BP) may be assured to function as a free Baptist Press..."

An extensive study revealed little support for Stroud's proposal, according to Wilmer C. Fields, director of the news service. The study revealed the news service "now has great freedom..." and that agency status "would be no further guarantee of greater freedom." It also noted agency status would require much more Cooperative Program

money to maintain the current level of news operation.

In a separate action, committee members "declined to consider" a proposal to establish a Southern Baptist Convention Center in Jerusalem, Israel. The possibility such a center could be constructed was presented to the Executive Committee after it arose during a December trip to Israel, led by SBC President Bailey E. Smith, and sponsored by the Anti-Defamation League of B'nai B'rith.

During that trip, an Israeli travel agency executive suggested that Southern Baptists build a facility as an orientation center for Baptist visitors to Israel. It was proposed the facility also could be used for historical display, a library, a graduate school, a church, or other special ministries.

Smith and Harold C. Bennett, executive secretary-treasurer of the SBC Executive Committee, were taken to one proposed site, containing nearly three acres, where Mt. Scopus meets the Mount of Olives. Estimated cost of the land is as much as \$5,752,500.

R. Keith Parks, president of the Southern Baptist Foreign Mission Board, commented he believes the "action taken by the Executive Committee is very appropriate. I feel any Baptist effort outside of the United States ought to be coordinated with national Baptists and missionary personnel on the field."

During the two-day meeting, committee members also approved Bold Mission Thrust emphases for 1985-1990, and adopted a statement concerning SBC committee functions.

Members approved 1985-90 Bold Mission Thrust Program emphases, with the theme, "Cooperating in Bold Mission Thrust." Specific goals adopted include a 10 percent increase in baptisms per year, 5,000 new churches organized by Sept. 30, 1990, 10-million people in Bible study, 4-million people in discipleship training, an additional 3,000 students in seminary, and 20,000 churches conducting stewardship emphasis annually.

The goals also call for 7,660 missionaries at home and abroad by the end of 1990, the use of 200,000 short-term volunteers annually, and 3-million people participating in missions education.

The goals also call for every church in the convention to increase Cooperative Program giving by a minimum of one percent a year.

In response to two motions adopted at the 1981 annual meeting, the committee adopted an operation and funding policy statement for SBC committees. One of the motions called for standardization of operating procedures, including a provision for redress. The other called for ade-

(Continued on page 3)

## Week of Prayer theme reflects ethnic growth

BIRMINGHAM, Ala. — The United States' growing ethnic diversity is reflected in this year's Week of Prayer for Home Missions theme — "The World Is Here."

During the week of prayer, March 7-14, the spotlight will fall on Southern Baptists' witness to about 40-million Americans who belong to language-ethnic groups in America.

"This year's theme is especially appropriate," said William G. Tanner, president of the Home Mission Board. "The Home Mission Board sponsors missions work with more than 70 language, ethnic, and international groups who are living in our midst."

Even so, there are still 100 ethnic groups in America that have no Southern Baptist witness.

In addition, the Home Mission Board reports that increased membership of black, Hispanic, and other minority members in Southern Baptist churches is not keeping pace with the growth of these groups among the United States' population.

The week of prayer observance will culminate in the collection of the Annie Armstrong Easter Offering for Home Missions. The national offering goal, set by the SBC Woman's Missionary Union's Executive Board is \$22-million. The Tennessee Executive Board set the state goal at \$1,150,000.

"The Home Mission Board depends on

the Annie Armstrong Easter Offering for Home Missions for about half the total income the agency receives each year," said Tanner.

"The entire amount received through the offering goes to the mission field to support the work of our 3,097 missionaries," he said.

(Continued on page 2)

## State CP gifts hit \$1,299,491

February's mission gifts through the Cooperative Program by Tennessee Baptists barely missed the monthly goal, according to Tom Madden, executive secretary-treasurer of the Tennessee Baptist Convention.

Cooperative Program receipts for February were \$1,299,491.68 — which was only \$508.32 below the \$1.3-million monthly goal.

"This is especially significant when you realize that the month of February ended on Sunday, so February Cooperative Program gifts from some churches will not be received in the convention office until this week," Madden said.

Last month's \$1,299,491.68 Cooperative Program contributions were 24.2 percent higher than February 1981, when \$1,046,195.19 was received.

Madden also noted that Cooperative Program gifts for the first four months of the convention budget year (November 1981-February 1982) were 9 percent above the same four months of the previous budget year. To date, \$5,001,056.16 has been received during these four months of the current convention year, compared to \$4,589,025.64 for the November 1980-February 1981 period.

Messengers to the 1981 state convention approved a \$15.6-million basic budget-goal for the state convention's budget year (November 1981-October 1982). With one-third of the budget year gone, Madden observed that the four-month goal would be \$5.2-million, and that receipts for the last four months were \$198,943.84 (or 3.8 percent) below the one-third year goal.



## Charles Treadway dies in Nashville

**NASHVILLE (BP)**— Charles F. Treadway, pioneer in Southern Baptist Vacation Bible School and deacon ministry training, died Feb. 23, following a two-year battle with cancer. He was 67 years old.

Treadway retired in 1980 from the church administration department of the Southern Baptist Sunday School Board but was still in demand as a leader of deacon ministry conferences around the country.

Before moving to Nashville in 1952, Treadway was a pastor in his native Mississippi. While working at the Sunday School Board, he was interim pastor in 28 churches and was instrumental in starting the Brentwood and Crivewood Baptist churches.

Because of his outstanding work at the Southern Baptist education and publishing agency and his contributions to the Nashville community, Treadway was honored early in 1980 as a Career Professional Employee of the board.

He was a graduate of Mississippi College, Clinton, and Southern Baptist Theological Seminary, Louisville, Ky., where he was a teaching fellow for Gaines S. Dobbins in religious education.

Treadway is survived by his wife, Ruby; two sons, Richard, a Nashville psychiatrist, and Jimmy, an English professor at Samford University in Birmingham, Ala.; two brothers; a sister; and five grandchildren.

The family requests that gifts, in lieu of flowers, be made to the Charles F. Treadway Memorial Fund, in care of First Baptist Church, Nashville, for a ministry to be determined by the family.

## Brotherhood leader dies in Kentucky

**MIDDLETOWN, Ky. (BP)**— Calvin D. Fields, director of the Kentucky Baptist Brotherhood for a month, died Feb. 25 after suffering recurring heart attacks. He was 57 years old.

Fields, who had been associate Brotherhood director for 16 years prior to assuming the directorship Jan. 16 was hospitalized in Richmond, Ky., Feb. 19, after suffering an attack near Winchester. On Feb. 21, he suffered cardiac arrest, and was stricken again early Feb. 25.

A Kentucky native, Fields was a graduate of Georgetown (Ky.) College and Southern Baptist Theological Seminary, Louisville, Ky.

He was pastor of several churches in Kentucky, and director of missions for three eastern Kentucky associations prior to joining the Brotherhood staff in 1966.

He is survived by his wife, the former Marian Wigglesworth of Cynthia, Ky.; two daughters; and two sons.

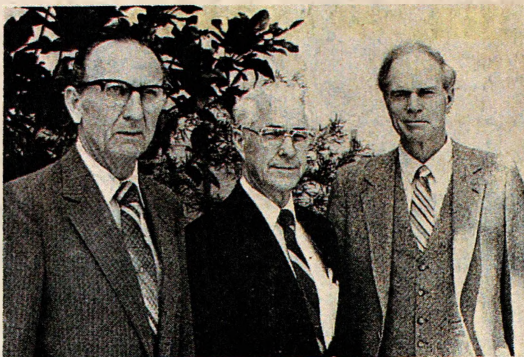
## Ethnic growth...

(Continued from page 1)

"This year's offering will increase the language-ethnic potential of home missions," said Carolyn Weatherford, executive director of WMU, SBC. "World missions begins at home. The world is here."

The offering is named in honor of Annie Armstrong, first corresponding secretary of Woman's Missionary Union.

During Miss Armstrong's tenure, she was a driving force in mobilizing Southern Baptists to support home missions. It was she who led Southern Baptists in setting aside the weeks of prayer and the special offerings for both home and foreign missionaries.



**EXECUTIVE DIRECTORS' OFFICERS** — Newly elected officers of the Southern Baptist Association of State Convention Executive Directors are (left to right) Robert Hughes of California, president; Cecil Ray of North Carolina, president-elect; and Robert Wilson of Michigan, secretary-treasurer.



**EDITORS' OFFICERS** — The elected Southern Baptist Press Association officers are (left to right) Robert Hastings, editor of the *Illinois Baptist*, president-elect; Lynn Clayton, editor of the *Louisiana Baptist Message*, secretary-treasurer; and Edgar Cooper, editor of the *Florida Baptist Witness*, president.

## Executive directors, editors elect officers

**LAS VEGAS, Nev. (BP)**— Robert Hughes of California and Edgar Cooper of Florida were elected to head the associations of Southern Baptist executive directors and editors during the groups' annual meetings.

Hughes is executive director-treasurer of the Southern Baptist General Convention of California. He succeeds Joe Ingram, executive director-treasurer of the Baptist General Convention of Oklahoma.

Cooper, editor of the *Florida Baptist Witness*, journal of the Florida Baptist Convention, succeeds Don McGregor, editor of the *Mississippi Baptist Record*, as president of the Southern Baptist Press Association.

The executives named Cecil Ray, general secretary-treasurer of the Baptist State Convention of North Carolina, as president-elect, and re-elected Robert Wilson, executive director-treasurer of the Baptist State Convention of Michigan, as secretary-treasurer.

Robert Hastings, editor of the *Illinois Baptist*, was named president-elect of the SBPA, and Lynn Clayton, editor of the *Louisiana Baptist Message*, journal of the Louisiana Baptist Convention, was elected secretary-treasurer, succeeding Bobby S. Terry, editor of *Word and Way*, journal of the Missouri Baptist Convention.

Amidst discussion of the survival of the Southern Baptist-affiliated newspapers because of postal increases, editors voted to have their liaison committee work with the director of Baptist Press, Wilmer C. Fields, and leaders of the Baptist Joint Committee on Public Affairs, to expand the Baptist Press Bureau in Washington, D.C.

The editors, who represent 34 publications with an aggregate circulation of

nearly 1.9-million, also accepted a report from the liaison committee recommending Baptist Press remain a part of the SBC Executive Committee, and not be given separate agency status.

During the 1981 annual meeting of the SRC in Los Angeles, messenger Jimmy Stroud from Knoxville, recommended giving Baptist Press agency status. The recommendation was referred to the Executive Committee, which administers the news service function, for study.

The liaison committee report, written by C. R. Daley, editor of the *Western Recorder*, journal of the Kentucky Baptist Convention, notes that retaining BP as part of the Executive Committee structure will be "satisfactory as long as we have BP staff members with the integrity of those now serving. But we need to remember that every establishment is

always tempted to control the news and if this happens editors will have to resist."

In a resolution, SBPA members noted the "purpose of the news service is to provide accurate and adequate reporting, whereas SBC history indicates resistance to information that is threatening or embarrassing and the result is often attacks on the news service."

The resolution further said the association believes the "news service is vital to the democratic processes of the convention... and is opposed to attempts to stifle or hinder" it in its duties. It also "urged cooperation with BP by all parties," and encouraged the Executive Committee to "assume a higher profile as the advocate of the news service for the benefit of the SBC."

## Committee views options for minister's aid fund

The Minister's Aid Fund Committee at its Feb. 25 meeting voted to seek additional information in its study to financially assist church staff members who lose their positions.

The committee was authorized by the 1980 Tennessee Baptist Convention when the messengers approved a motion by Paul Durham of Nashville, that a special committee be appointed by the president "to plan and recommend assistance to all pastors and other full-time Christian workers of our churches, the Tennessee Baptist Convention, and the associations of the Tennessee Baptist Convention who lose their jobs."

In order to determine just how many church staff members might need to receive assistance from such a fund, the committee will survey the directors of missions with such questions as: how many church staff members left under pressure in 1981; did the person or his wife have secular employment at the time of leaving; the reason for leaving this position; was there any "severance pay"; length of time before securing another church position; did the person find another church position or secular employment.

The committee discussed how much money could be provided by a Minister's Aid Fund, with several committee members noting that to provide full compensation might encourage staff members to leave prematurely or churches to avoid their obligation to provide any severance pay. It was expressed that perhaps the best service such a fund might do would be to provide

life and health insurance payments and retirement payments, since these are often dropped by staff members when financial crises occur.

Members of the committee observed that churches need to be repeatedly informed of their responsibility to continue salary and benefits for a staff member for a reasonable period of time after the staffer is forced to leave his position.

Also discussed was the possibility of establishing a type of "unemployment insurance" into which churches and staff members would contribute on a regular basis. Some expressed problems with such a plan, since many churches and staffers would not feel that they would ever need such unemployment insurance.

Committee members noted that Minister's Aid Fund should also provide assistance for counseling services, because of the emotional and psychological problems when a church staff member is dismissed from his position.

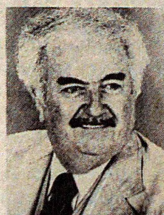
The next meeting of the committee will be May 6. At that time they will examine what other Baptist state conventions are doing to help church staff members in those states who lose their positions.

Eugene Cotey, committee chairman, said that the committee is "vitaly interested in this growing problem and is making a concerted effort to find a way to help." He encouraged those with suggestions for the committee to write to him at 723 North Rutherford, Murfreesboro, TN 37130.

## 'Captain Kangaroo' to address seminar

Bob Keeshan, better known as television's "Captain Kangaroo," will speak on families and television at the annual seminar of the Southern Baptist Christian Life Commission, March 22-24 in Atlanta, Ga.

Keeshan, who created "Captain Kangaroo" in 1955 and is an innovator in children's programming, originally declined the invitation to speak due to a heart attack. He has now accepted the invitation because of improved health.



Keeshan



# SBC Executive Committee sets \$106-million budget

NASHVILLE (BP)— The first \$100-million-plus budget in the history of the Southern Baptist Convention has been approved by the SBC Executive Committee.

The \$106-million Cooperative Program allocation budget will be presented to messengers of the 1982 annual meeting in New Orleans for final action.

Adoption of the budget by the 67-member Executive Committee "is only one step in the multifaceted Cooperative Program budgeting process," said W. Dewey Presley, a Dallas banker who is chairman of the committee's program and budget subcommittee.

He explained the budgeting process began last September, when agency executives of the SBC's 20 agencies listed priorities and needs. Then in a subcommittee meeting in January, a more detailed presentation was made, and the budget proposal drawn, Presley said.

Presley noted "the entire budget supports Bold Mission Thrust, the denomination's plan to present the gospel to every person in the world by the year 2000."

The budget provides \$96,635,000 as the basic operating budget; \$3,365,000 for capital needs; and \$6,000,000 as the challenge phase.

That compares with the 1981-82 budget of \$93-million, of which \$83,400,000 was the basic operating budget; \$3,000,600 was for capital needs; and \$6,599,400 was the challenge phase.

Under the proposal, the Foreign Mission Board will receive \$47,839,300, a 17.06 percent increase over the 1981-82 allocation of \$40,866,000. The Home Mission Board will receive \$19-million, a 16.83 percent increase over the \$16,263,000 last year. The Annuity Board will receive \$478,000, a 26.46 percent increase over the \$378,000 last year.

The six seminaries will receive

\$20,520,600, a 13.26 percent increase over the \$18,118,900 last year.

Golden Gate seminary in Mill Valley, Calif., will receive \$1,917,049; Midwestern seminary in Kansas City, \$1,775,896; New Orleans seminary, \$3,437,840; Southeastern seminary in Wake Forest, N.C., \$3,201,053; Southern seminary in Louisville, Ky., \$4,497,014; and Southwestern seminary in Fort Worth, Tex., \$5,691,748.

The seminary allocations are made under a complicated formula based in part on full-time equivalency enrollment and per student costs.

Other agencies will receive the following: Southern Baptist Foundation, \$213,450; American Baptist Theological Seminary Commission, \$203,450; Brotherhood Commission, \$758,100; Christian Life Commission, \$562,800; Education Commission, \$378,400; Historical Commission, \$328,000; Radio-Television Commission, \$4,229,000; Stewardship Commission, \$344,500; and Public Affairs Committee, \$357,400.

The Southern Baptist Convention operating budget received an allocation of \$1,422,000, a 13.94 percent increase over the \$1,173,000 last year.

The Executive Committee also adopted a 1982-83 SBC operating budget, for presentation to the 1982 annual meeting in New Orleans.

The budget, based on total income of \$2,144,500, provides \$631,900 for convention operations, which includes general

operations, the SBC building in Nashville, the annual meeting, and expenses of SBC committees.

Convention administration is budgeted for \$908,300; public relations at \$308,500; and the Baptist World Alliance contribution at \$295,800.

In the Cooperative Program allocation budget, the capital needs section provides \$201,400 to Golden Gate seminary for construction of child care facilities; \$306,000 to Midwestern seminary for a student center and energy package; \$1,000,000 to New Orleans seminary for a student center and cafeteria; \$1,365,000 to Southeastern seminary for a student center and other building renovation; \$221,000 to Southwestern seminary for a resources and research center and building renovation; and \$271,600 to the Radio-TV Commission for tape duplication and TV equipment.

Phase one of the challenge budget provides \$500,000 to the six seminaries.

Phase two provides \$2,750,000 to the Foreign Mission Board, representing 50 percent of the total of \$5,500,000. The Home Mission Board would receive \$1,200,000, or 21.82 percent.

Others included in phase two are the SBC operating budget, \$200,000; seminaries, \$600,000; Christian Life Commission, \$75,000; Historical Commission, \$50,000; Stewardship Commission, \$45,000; and Public Affairs Committee, \$30,000.

## Executive Committee votes to continue building study

NASHVILLE (BP)— Any decision on a new Southern Baptist Convention building is at least 15 months away, although half the agencies that would be housed in such a building told Executive Committee members they desperately need more space.

The SBC Executive Committee, in its February meeting, authorized its long range study committee to continue to develop a plan to provide adequate space for the agencies involved. The committee will report in September, but it is anticipated no final action will be taken before the 1983 Southern Baptist Convention meeting in Pittsburgh.

The long range study committee, then chaired by Knoxville businessman William A. Fortune, proposed in September that a new Southern Baptist Convention building be built for about \$6.5-million. Fortune's company would do the construction which would be through industrial revenue bonds.

Fortune was elected vice-chairman of the Executive Committee in September, so resigned from the long range study committee. Since September, new long range committee chairman, Rodney R. Landes, of El Dorado, Ark., has tried to answer questions that arose from the surprise announcement of the new building plans.

Failure to document need for additional space was a primary criticism. Landes countered that by bringing the agency executives to project their 20-year space needs at the February meeting.

Three organizations currently housed in the SBC building — the Christian Life Commission, Seminary External Education Division and Stewardship Commission — say they are desperately overcrowded.

The other organizations housed in the building — the Executive Committee, Southern Baptist Foundation, Education Commission, and American Baptist Theological Seminary Commission — indicated they have no great space needs.

The Historical Commission, currently housed at the Baptist Sunday School Board, has asked to be an occupant in any new SBC building. It "must have additional space if it is to fulfill its assigned task," said Director Lynn E. May Jr.

The Historical Commission, said May, has nine people working in an office designed for six, has two people with offices in a storeroom, and one works in a hallway. The commission was designed

by convention action in 1981 as the repository for all SBC historical records. As such, its storage space is being rapidly consumed.

Commission records now occupy 4,531 square feet at the board, and May anticipates increased need to 11,000 square feet by 1990.

The Seminary External Education Division, with over 10,000 students in center or home study courses, is "terribly overcrowded," said Director Raymond M. Rigdon.

The Stewardship Commission has expanded from five to 26 employees in its 20-year existence. Their present space is "certainly not adequate" said Director A. R. Fagan.

Foy D. Valentine, executive director of the Christian Life Commission, said staff expansion from two to 12 in the past 20 years has cramped his space. Projecting, he said the commission should expand its services even more in the next 20 years.

Valentine also asked for a clear understanding of proprietorship among the agencies which would occupy a new building. In the current budget year, funds to operate the building have been diverted from the agencies' budgets to the Executive Committee for central management.

Harold C. Bennett, executive secretary of the Executive Committee, said he feels a strong need for additional common space and parking.

Bennett said he would like to see a building with three large conference rooms seating 75 to 100, and three to six small conference rooms. The major auditorium, now seating 60 at desks and 164 in gallery seating, should be increased to 100 at desks and at least 300 in gallery seating, Bennett said.

The current building has 60 parking spaces. Bennett said there is a regular need for 100 spaces and, for special meetings, 140 to 150 spaces.

Landes reported the long range study committee has rejected industrial revenue bonds as a means of financing the building, and instead favors use of regular SBC capital needs funds.

He said the building will be in Nashville, although the specific site is still being studied. The Sunday School Board has offered a site adjacent to its building, and Landes said that "option is still open."

He also released a 1979 appraisal on the value of the SBC building: \$2,464,390.

## Lincoya Hills church calls Huff as pastor

Lincoya Hills Baptist Church, Nashville, called Leslie Melton Huff Jr. as pastor, a ministry he began March 1.

Huff came to the church from the pastorate of First Baptist Church of Carmi, Ill. He is a former pastor of First Baptist Church of Lewisburg; Walnut Street Baptist Church, Owensboro, Ky.; and other Kentucky churches.

Huff has served as associational moderator, vice-moderator, and committee member; president of the Carmi Ministers' Association; chairman of the constitution committee of the State Baptist Convention of Illinois; and as a trustee of Belmont College, Nashville.

A native of Decatur, Tex., Huff is a graduate of Howard Payne College, Brownwood, Tex., and Southern Baptist Theological Seminary, Louisville, Ky.



Huff



**BONDS RETIRED** — During a Jan. 31 service, First Baptist Church, Parsons, burned the last bond redeemed from the \$145,000 issued to finance its new sanctuary. Burning the bond are (from left) Glaydon Lifsey, chairman of bond promotion; Helen Garrett, secretary for promotional activities; and Doyle Neal, pastor of the church.

## SBC goals . . .

(Continued from page 1)

quate funding for the SBC resolutions committee.

The statement says "an appeal or redress related to any committee action or recommendation is presently available during the annual meeting of the SBC," and specifies that committees will have adequate funding to do their work.

In other business, the committee: — Instructed the SBC Brotherhood Commission to devise a plan on lay involvement in Bold Mission Thrust, and to report back to the Executive Committee in June;

— Accepted as information a report that the bylaws workgroup of the administrative and convention arrangements subcommittee, in consultation with the newly appointed legal affairs committee, will continue its study of the SBC Constitution and Bylaws, particularly the article on convention membership;

— Approved image magnification for the 1983 SBC in Pittsburgh; set St. Louis as the site for the 1987 meeting, and San Antonio, Tex., as the host for 1990, unless 1988 or 1989 become available in the Texas city;

— Set an eight percent salary adjustment for Executive Committee staff members for the 1982-83 budget year;

— Accepted the resignations of three committee members. Hugh D. Boring, of Bellevue, Wash., resigned because of a move to Wichita, Kan.; William D. Hillis of Baltimore, Md., moved to Waco, Tex.; and E. B. Smith of Mason, Ohio, moved to Kentucky;

— Appointed replacements for two members of the SBC committee on boards, commissions, and standing committees. Byron Banta, pastor of First Southern Baptist Church of Payson, Ariz., replaces Fred North, who left Arizona to accept a California pastorate, and Harold N. Jarnagan, pastor of Kennewick (Wash.) Baptist Church, replaces James W. Wilcox Jr., who left Oregon to become pastor of a church in Kansas.



## Letters to the Editor...

Letters on any religion-related subject are welcomed. Letters of over 300 words will not be used. Other letters may be shortened at the discretion of the editor. No unsigned letters will be printed, but writer's name will be withheld for sufficient reason. Letters must contain complete address.

### Thanks for concern

Dear editor:

John J. Smith, pastor of Benton Station Baptist Church of Benton, fell on ice and broke his hip Jan. 18 while attending the Evangelism Conference in Nashville.

He is recovering in a fine way and would like to thank those in the Brentwood offices who visited him in the hospital and everyone who prayed for his recovery.

He is now driving his car and attending church services.

He asks for continued prayers.

W. L. Shipman  
Polk County Baptist Association  
P.O. Box 289  
Benton, TN 37307

### Home for retarded

Dear editor:

As the mother of a 24-year-old retarded daughter and director of the special education department at Lincoln Park Baptist Church, I would like to bring a need to the attention of all Tennessee Baptists.

In the state of Tennessee, there are no Baptist-sponsored residential facilities for adult and elderly retarded citizens.

As a mother who has raised a retarded child to adulthood in a Christian home, I am extremely concerned that when the time comes when her father and I are no longer physically able to care for her, or if we should precede her in death, there is no Christian home where she could be cared for by people who care about her welfare and do it in a kind and loving way.

I truly feel that it is time for Tennessee Baptists to look over this way and accept the challenge and responsibility for this group in our society, classified as mentally retarded, especially after they reach age 18 and no longer have someone to care for them at home.

More churches need to include them in church activities just as other family members are ministered to.

In my opinion and many others, here is a mission field ready for harvest. The department at Lincoln Park is full and running over with children and adults seeking to know God. We can minister to their needs through this program, but

the need is so much greater than we can even visualize. Please help us to help our family members and friends have a future to look forward to and a Christian home where our retarded can live and be happy.

Mrs. Estine Bush  
725 Columbia Ave.  
Knoxville, TN 37917

### Edens writes new book

Dear editor:

David Edens' *Marriage: How to Have It the Way You Want It* is a delightful blend of common sense, insight, and how-tos — punctuated throughout with flashes of humor and sparks of wit.

The book springs from a root formula which illustrates that fulfillment in marriage equals the combination of companionship, domesticity, vocational compatibility, celebration, and sexual satisfaction as the numerator and communication as the denominator. Each of these factors and its contribution to modern marriage is presented in a simple and straightforward manner.

In addition, Edens gives invaluable advice about when and how to seek professional help for a troubled marriage and disclosure and sharing exercises to strengthen communication skills.

David Edens affirms his faith in the institution of marriage and its significant potential for contributing positively to human fulfillment. I found his book a joy to read and a pleasure on which to reflect.

R. Lofton Hudson  
968 S. 119 Ct.  
Omaha, NE 68154

Longtime readers of the *Baptist and Reflector* will recall that for many years David Edens wrote a column "On Matters of Family Living" in this publication. He is head of the family and community studies department at Stephens College, Columbia, Mo. (editor)

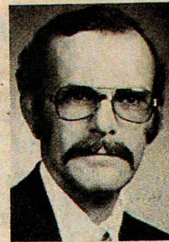
### Valley Hills calls Grubbs

Hartsell M. Grubbs recently began duties as pastor of Valley Hills Baptist Church, Bristol.

Grubbs is a former pastor of New Pleasant Baptist Church, Gaffney, S.C.



Miss Kirkpatrick



Grossman



Mrs. Grossman



Mrs. Randall

## Women's 'Get-together' set for Gatlinburg March 19-21

"Jesus said, 'Follow Me'" will be the theme of the 1982 Tennessee Baptist Women Get-together, March 19-21, at Gatlinburg's Sheraton Hotel.

The event, sponsored by the state Woman's Missionary Union, will emphasize lay involvement in Knoxville, Michigan, Upper Volta, and the world.

According to Beulah Peoples, Tennessee WMU promotion and Baptist Women director, speakers for the three-day meeting include Missionaries Paul and Peggy Grossman, R. T. and Fran Buckley, Shirley Randall, Mary Frank Kirkpatrick, and Mary Allred; authors Barbara Joiner and Ophelia Humphrey; and David Peach.

The Grossmans, who will speak on their experiences in Senegal, are missionaries to that African nation. Grossman, a general evangelist, and his wife, a church and home worker, were previously stationed in Liberia.

The Buckleys, assigned to Bangladesh, have been in that country since 1969 when it was East Pakistan. The couple will tell of their work as a general evangelist and church and home worker. They were previously missionaries in Belgium.

Mrs. Randall, also stationed in Africa, is a church and home worker in Zimbabwe. Her husband Maurice is a physician at Zimbabwe's Sanyati Baptist Hospital.

Miss Kirkpatrick, assigned to Liberia, will tell of her work as a Bible instructor at Ricks Institute and a student worker with the College Christian Fellowship. She was formerly a student worker, secretary of the Training Union department, and accountant for the Baptist Book Store in Ibadan, Nigeria.

Mrs. Allred, a literary missions coordinator person for Tennessee, will represent home missions. She is a state

coordinator of volunteer activities for the American Bible Society, and has led seminars and training sessions for literacy missions.

Mrs. Joiner and Mrs. Humphrey will lead individual conferences, as well as participate in the main sessions. Mrs. Joiner is the author of *The Dynamic Woman I Am*, and Mrs. Humphrey is the author of *Witnessing Women*, both WMU materials.

David Peach, director of Baptist Ministries for the 1982 World's Fair, will speak on that organization's work. He is a former pastor of Island Home Baptist Church of Knoxville, and has served as associate pastor of churches in the states of Tennessee and North Carolina.

In addition, representatives from Western Heights Baptist Center, Knoxville, and Smoky Mountain Resort Ministries, Gatlinburg, will be present.

Music for the get-together will be provided by Ken and Lois Holland, who are featured on "At Home with the Bible," produced by the Southern Baptist Radio and Television Commission and the Baptist Sunday School Board; Brona Maddox, wife of Carson-Newman College President Cordell Maddox; Keith and LeAnn Martin, team directors and managers for PowerSource at Baptist Ministries for the 1982 World's Fair.

The event will begin at 8 p.m. (EST) Friday, and conclude with a Sunday morning session. For further information, contact Miss Peoples at the Tennessee Woman's Missionary Union, Box 347, Brentwood, TN 37027.



Peach

## Upper Volta slide/tape set offered free for church use

"The Long Road," a 17-minute slide/cassette tape presentation on Tennessee Baptists' work in Upper Volta, is available for church use from the Tennessee Baptist Convention.

The presentation features 80 slides with a cassette record script. The cassette tape has been pulsed for use with automatic slide projectors. Those not having such equipment can follow the presentation with a printed script.

"The Long Road" tells what Tennessee Baptists are doing in a hunger and relief project in the western African nation of Upper Volta. The audio script explains why volunteers are needed, and how individuals and married couples can apply to work in Upper Volta under the Foreign Mission Board for 30 days or longer.

"The slide presentation is an informative and inspiring mission program, suitable for prayer meetings, worship services, Woman's Missionary Union,

Brotherhood, or other meetings," said Evelyn Strickland, TBC public relations coordinator.

The only charge for the use of the slides and cassette tape is the return postage to the TBC office.

Those wishing to reserve a slide/tape set should write to the Public Relations Office, P.O. Box 347, Brentwood, TN 37027, or call (615) 373-2255, extension 295.

"When requesting a set, be sure you have selected a first and second choice date for showing, and be sure to allow seven days for mailing," Mrs. Strickland advises. "When you give the address to which the slides are to be mailed, be sure an individual will be present to receive it."

By vote of the 1980 TBC, Tennessee Baptists are seeking to provide conservation, agricultural, medical, literacy, and evangelistic assistance to missionaries in Upper Volta.

CIRCULATION THIS ISSUE — 80,641

Alvin C. Shackelford, Editor

**Baptist  
and  
Reflector**

Charlie Warren  
Associate Editor

Steve Higdon  
Assistant Editor

Euro Lannom  
Advertising, Subscriptions

Martha Buster  
Production Assistant

Established 1835  
Post Office Box 347, Brentwood, TN 37027  
Telephone: (615) 373-2255

Published weekly except New Year's week by the Executive Board of the Tennessee Baptist Convention at Brentwood, Tennessee 37027. Subscription prices: \$6.45 individual; clubs of ten or more, \$6.15; church budget, 10.8¢ per family per week when sent to 50 percent or more of church homes. Second class postage paid at Brentwood, Tennessee, and at additional mailing office.

Space forbids printing of resolutions and obituaries. Advertising rates on request. Member of Baptist Press (BP) news service of the Southern Baptist Convention.

News journal of Tennessee Baptist Convention  
Tom Madden, Executive Secretary-Treasurer

BOARD OF DIRECTORS: Roy Miller, chairman; Raymond Boston, vice-chairman; Harold Allen, Wayne Allen, Ansell Baker, Stanley Brumfield, E. E. Carrier, William Coles Jr., C. Ed Harris, James Hatley, Fred Kendall II, John Laida, Rudy Newby, James Porch, Dennis Pulley, John Shepherd, Fred Steelman, and Matt Tomlin.



# Union trustees vote to build more housing

JACKSON — Union University trustees have given the college the green light to construct more student apartments to replace overflow housing lost from the sale of its east Jackson campus.

The loss of Blythe Hall, used to house nearly 60 male students almost every fall since 1975, threatened to bring a halt to Union's record-breaking enrollments by reducing the college's capacity for resident students.

Trustees approved a \$350,000 construction project for 12 additional units of housing, thus assuring the college of maintaining last year's capacity resident population of nearly 900.

The project will house from 50 to 60 males, depending on the number of kitchenettes used, explained President Robert Craig. Following Union's floor

plan, the apartments will feature four or five bedrooms opening onto a common living room with adjacent bath. Half of the apartments currently have a kitchenette substituted for a bedroom.

Construction will begin immediately to ensure the units are ready for the 1982 fall semester, Craig added. Cecil Eber-

sold of Memphis will serve as construction supervisor for the project.

Cost of the new addition, which will be financed by a pledged gift and monies on hand, includes construction and furnishings.

Board Chairman Jim Austin of Maury City praised the action of the policy-making body, stressing the college's need of keeping students already recruited. "Union cannot afford to turn students away after they have already been recruited and have planned on

enrolling in the fall. This new addition will demonstrate the college's continued policy of providing adequate housing as long as financially possible."

The project will be Union's fourth attempt to relieve overcrowding since it relocated six years ago. New apartments completed last summer were immediately filled by the college's 17 percent jump in resident students, which pushed its fall enrollment to a record 1,382.

Union's resident population now comprises nearly 64 percent of its student body, with about 882 students housed in the fall. When the new campus opened in 1975, 552 students were being housed in the apartment village.

In other business, trustees approved a record \$6,615,187 operating budget for the 1982-83 academic year. The new budget, which goes into effect June 1, is the largest in the 157-year history of the institution and is an increase of 13.5 percent over the current year's \$5.8-million budget.

## Robert Byrd named to write lessons

Robert O. Byrd, professor of religion at Belmont College, Nashville, will write the Uniform Series Sunday School lesson commentary for the Baptist and Reflector during the next quarter, beginning with a commentary in this issue.

Byrd joined the Belmont College faculty in 1972. Before that, he was assistant pastor of DeHaven Memorial Baptist Church, LaGrange, Ky., for six years. Earlier, he had served as assistant pastor of Riverside Baptist Church, Nashville; as interim pastor of Woodcock Memorial Chapel, Nashville; and as pastor of churches in Florida, his native state.

A graduate of Belmont College and Southern Baptist Theological Seminary, Louisville, Ky., Byrd also attended Stetson University, DeLand, Fla., and Murray State University, Murray, Ky.

Byrd's wife, Joyce, works in the church music department of the Tennessee Baptist Convention. They have four children.



Byrd

## Personal perspective

By TOM MADDEN  
TBC executive secretary

"He was reckoned among the transgressors" (Luke 22:37) and "separate from sinners" (Hebrews 7:26). As I read these two passages recently, I wondered, "How could Christ be 'reckoned among transgressor' and still be 'separate from sinners?'"

He was "reckoned among transgressors" in His birth. With His birth, He became another life added to the population. Apart from the supernatural signs that accompanied His virgin birth, He was one among the others, a part of a great number of suffering, sorrowing souls.

He was "reckoned among transgressors" as He grew up in Nazareth. He was reckoned among the children of Nazareth. When He passed from youth into manhood, making His living as a carpenter, He was still reckoned among them, working, toiling, sweating, and trusting.

When He began His public ministry, He was "reckoned among the transgressors." "This man receiveth sinners and eateth with them" (Luke 15:2). He was the friend of publicans and sinners.

In His dying on the cross, He was reckoned with sinners. Two malefactors were crucified with Him, one on the right hand, and the other on the left.

Yet, He was separate. He was separated from them because His character was that of sinlessness and holiness. He was separated from those around Him in conduct. He never deceived, oppressed, nor took advantage of anyone.

Finally, He was separated from sinners by the act of God which took Him out of the midst of them and out of the grave into which they had put Him. God separated Him from them and placed Him at His own right hand.

Always among us, yet, because He is the Son of God, He is always separate from us.



Madden

## Griffin named director of Union recruitment

JACKSON — Union University has appointed Carroll Griffin, minister of activities and youth at West Jackson Baptist Church for 10 years, as director of student enlistment.

Griffin, who assumed the post March 1, is a 1971 graduate of the college. He will be responsible for Union's student recruiting program.

Griffin is president of the university's alumni association and is a former member of the association's board of directors. He has taught seminars at Tennessee Baptist recreation conferences, and at Southern Baptist recreation conference in Ridgecrest, N.C., and Lake Yale, Fla. He is also a member of the retreat committee of the Madison-Chester Association of Baptists.



**Art & Stained Glass Co.**  
Complete Church Window Service  
P. O. Box 1055  
HIGH POINT, N. C. 27261  
Phones: 919/883-0516 or  
919/883-0715

### CHURCH PEW CUSHIONS

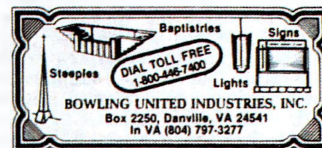
Padded seats or reversible cushions.  
Foam filled, velvet or Herculon.  
Call measurements collect for estimate:  
Mrs. J.T. Lundrum, Owner  
Telephone: (803) 277-1658  
**CONSOLIDATED UPHOLSTERY**  
28 Dolphin St., Greenville, S.C. 29605

### WORLD'S FAIR RENTALS

New Apartments, completely furnished. Only 25 miles from Fair. Call or write for information. Richard Wilburn or Tommy White, Route 7, Box 381, Strange Road, Lenoir City, TN 37771. Phone (615) 986-2441 or 986-2306.

### CHURCH FURNITURE

From Factory to Church  
**RAINSVILLE CHURCH PEW COMPANY**  
220 Rainbow Ave., S.W.  
Rainville, Ala. 35986  
Phone (205) 638-2467 or 638-3882  
We upholster existing pews



### CHURCH FURNITURE

Pews, Pulpits, Altars, Communion Tables  
**Free Brochures - Free Estimates**  
Write **R.G. Ketron Church Furniture**  
or **3401 Montlake Dr.**  
Call: **Knoxville, TN 37920**  
Phone **(615) 577-8716**

## BAPTIST HEALTH CARE CENTER of Lenoir City

The **ONLY**  
Baptist nursing home  
in Tennessee

Health care for the aged  
in a beautiful country setting

Reasonable Rates begin at \$34.50 per day  
for room, delicious meals and nursing care.

A full range of spiritual,  
recreational  
and social activities

Call for reservations today  
**(615) 986-3583**

A ministry of the Tennessee Baptist Convention



## BIBLE BOOK SERIES

Lesson for March 7

## The King's last supper

By Jerry Oakley, pastor  
Springfield Baptist Church, Springfield

Basic Passage: Matthew 26:1-30

Focal Passages: Matthew 26:2, 14-18, 21-29

The setting of Matthew 26 is the time of the Feast of the Passover. This feast was observed in memory of the deliverance of the Jews from Egyptian bondage. It fell on the 14th day of Nisan (March-April). The lamb was slain on the 14th day at the Temple and eaten between sundown and midnight on the 15th day.

The new day began at sundown.

Jesus relates His death to the Passover. He introduces the symbolism of a new covenant. The covenant given to Moses at Sinai was sealed by throwing the blood of oxen upon the people. This symbolized the bond between God and Israel.

Jesus foresees a new covenant with His people with the law written on the heart rather than on stone tablets. The cup of wine symbolizes Jesus' blood of the covenant. Note that Jesus' followers are to drink the cup. This is a further indication of the internal nature of Jesus' covenant. The new covenant must be "within, written on the hearts." Man can only enter into this covenant by a conscious effort. Man must choose to "die" with Him to sin if His death is to be saving to us.

In this chapter, two people seem to be much more perceptive than the others. Mary and Judas seem to grasp the fact that Jesus is really going to die when the others refuse to admit this truth. They react in totally opposite ways.

Mary reacts with an action of love. This action is very extravagant. She anoints Jesus with oil worth 300 denarii or about a year's wages for a laborer. This action reveals that there are some traits in love that cannot be found anywhere else. Love never is calculating. It gives its all and considers the gift inadequate. Love demands sacrifice. Love acts when the opportunity for a beautiful expression is present. There are few things greater than the commitment of an act of love.

Judas reacted by the commitment of a selfish act. Judas was taking care of himself. Judas was the treasurer of the disciples. John writes, "He (Judas) was a thief, and had the bag, and bare what was put therein" (John 12:6). Judas saw that his days as treasurer and thievery were about over. He began to grab what

he could get from a crumbling group. He received 30 pieces of silver — the price of a slave. Too late, Judas would realize the value of the friendship of Jesus. Too late, he would realize the consequences of the betrayal of true and loyal love expressed in an undemanding relationship.

Jesus gave him every opportunity. He confronted him with his betrayal and allowed him to remain during the supper, an expression of forgiving friendship. Judas pressed forward with his despicable deed that would ultimately reveal to him the utter uselessness of his existence.

What a contrast between Mary and Judas. One commits an act which sweetens history with its aroma of love. The other commits an act that reveals the utter tragedy of selfishness and its narrow vision of God's purpose of man. Every man is confronted with the choice of the sweetness and creative goodness of love or the destructive diabolical grasp of the self-centeredness of sin. Each man chooses for himself which force shall determine his destiny.

Jesus, then, introduces the Lord's Supper. As the host, Jesus broke the bread and gave it to the disciples to eat with these words, "Take, eat; this is My body." The bread is a symbol of His own body given on the cross. It symbolizes a depth of love never known to man before and could only be revealed by the incomparable sacrifice of the Son of God.

Jesus lifted the cup and gave it to them, saying, "This is My blood of the new testament (covenant), which is shed for many for the remission of sins." The blood stands for a life given that all men might have life and have it abundantly through the forgiveness of sin. The statement that Jesus' death is "for many" does not mean some are excluded but is Biblical language for all.

Directing their thoughts toward the reality of the victory over sin, Jesus says, "I will not drink henceforth of this fruit of the vine, until that day when I drink it new with you in My Father's kingdom." The Lord's Supper is a pledge that the Father's kingdom shall prevail as a result of the victory already won over sin.

The Lord's Supper is a memorial or remembrance of Jesus and His death. It is a covenant with Jesus that we have died with and in Him to sin and have risen victorious to a new life by His grace. It is a communion and reassurance that we fellowship with Him daily. It is an expression of hope of life with Him in eternity based on the certainty of an already achieved victory over sin.



Oakley



Byrd

UNIFORM LESSON SERIES  
Lesson for March 7

## Christ's miraculous power

By Robert O. Byrd, professor of religion  
Belmont College, Nashville

Basic Passage: Mark 1:21-45

Focal Passages: Mark 1:21-27, 40-45

The very first verse of the Gospel of Mark announces the writer's intention. All that follows can be described as Mark's presentation of "the good news about Jesus Christ, the Son of God" (TEV). The unique relationship between Jesus and God was given heavenly acknowledgement following the baptism.

Jesus was designated by God as "My own dear Son" (1:11 TEV).

It is as if the writer follows his introductory announcement with a series of illustrations designed to show the dynamic consequences of the divine sonship of Jesus. In 1:14-15, Jesus is characterized as giving the mighty proclamation of the real nearness of the kingdom of God. Then with a potent dignity, He circulated among hard-working people from whom He called "fishers of men" (1:7).

## Power to speak

The synagogue activities did not require any official priestly leadership. Laymen took more leadership in those services which were mainly concerned with praise of God and religious instruction. Special attention was given to the reading and explanation of the Scripture. This was likely the area in which Jesus took part.

Luke 4:16-22 gives a more detailed account of another occasion on which Jesus was asked to perform such a function. Those who took part were accustomed to hearing teachings which were based on oral tradition. Jesus astounded His hearers by the absolute authority He exercised in His explanations.

They were accustomed to hearing views derived from authorities. Jesus' message was declared with authority — the authority of the Son of God.

## Power to heal

The next episode (1:23-27) was a concrete example of the consistency of Jesus' works with His words. One of the ways in which the potential threat of evil was actualized was by the incursion of unclean spirits. As with His teaching, Jesus avoided the style of His contemporaries who might be expected to use techniques of various sorts in their attempts to confront the evil powers and bondage represented by this crushed person. Instead, Jesus spoke to and directly dealt with the situation.

His "teaching" got results. The afflicted man was restored to health. Once again the onlookers were impressed. They exclaimed, "Is it some kind of new teaching? This man has authority..." (1:27 TEV). This connection of teaching and healing may be Mark's way of

reminding his readers that Jesus' power is available to all who would hear and receive His Word. The power of the kingdom of God presents an effective remedy for every human malady.

The story of the healing of Simon's mother-in-law is another example of the power of Jesus at work in the world. The friends of Jesus were not immune to human troubles such as illness and death.

After this, the fame of Jesus multiplied rapidly. Mark tells us that Jesus was beset with a multitude of needy people. In spite of the constant demand for His attention, Jesus found time for prayer. The scene described in 1:35 is a fitting response of a loving Son to the love of the Father.

Leprosy was a disease that excluded the infected person from the presence of God and man. It was regularly considered the result of sin. Consequently, it was understood to be a barrier to fellowship with God. The horror of the disease was so great that it cut the affected person off from most human contacts. The rabbis spoke of healing a leper as being more difficult than raising the dead.

This leper crosses those barriers and makes his way to Jesus. The Lord's response is very emotional. Some manuscripts say that He was "moved with anger," others that He was "moved with compassion" (or "pity"). The object of Jesus' feelings is not specified. It has been suggested that either term describes the strong sympathy Jesus possessed for one who had suffered so much tragedy.

The leper was not the only one who crossed barriers. Jesus did also. At this point, the master reached out and touched the diseased man. To the Pharisees, Jesus' action would have been unthinkable. This gracious act was not just an extra. It was an integral part of the powerful ministry of Jesus.

George Koon to lead  
So. Clinton church

George Koon accepted a call to lead South Clinton Baptist Church, Clinton, as its pastor, a ministry he began Jan. 17.

Koon came to the church from the pastorate of Couchton Baptist Church, Aiken, S.C. He was previously pastor of Perry Baptist Church, S.C.; minister of music and youth at Oak Grove Baptist Church, Batesburg, S.C.; youth pastor at Red Bank Baptist Church, Lexington, S.C.; and a chaplain at the South Carolina Correctional Institute.

Koon attended Columbia Bible College, Columbia, S.C., and is currently enrolled in seminary extension courses.



Koon

## SURPLUS JEEPS, CARS, TRUCKS

Car-Inv. Value \$2,143, sold for \$100. For information on purchasing similar bargains call (602) 998-0575, Ext. 5214.

Call refundable.

Surplus Information  
Scottsdale, Arizona 85251

## CHURCH FURNITURE

Finest Construction  
Lowest Prices  
Free Estimates

Plain or Padded  
We Will Upholster  
Your Present Pews  
Reversible Pew Cushions

CISCO

615/359-3075

Lewisburg, TN 37091



BAPTISMAL  
POOLS

FIBERGLASS  
CHURCH PRODUCTS

(615) 875-0679

3511 HIXSON PIKE, CHATTANOOGA, TN 37415

1982 WORLD'S FAIR — Rent one of three chalets or apartment less than most motels. 24 hr. security, stereo, air cond. Sleeps 4-12. Many motels already booked.

Baptist Discount. Free brochure.

Chamberlains, 4305 McCampbell Ln.  
Knoxville, TN 37918 - (615) 887-0474

19 Years of Continued Success  
in Building Economical, Energy  
Efficient Church Facilities

CONTINENTAL CHURCH BUILDERS, INC.

2811 Columbine Place  
Nashville, TN. 37204

Over 300 Stock Plans  
Ready to Meet Your Needs  
(615) 383-2313

## LITTLE GIANT

The name to remember for

FIBERGLASS BAPTISTRIES  
STEEPLES—CROSSES  
WATER HEATERS



Free colored brochure.

LITTLE GIANT MANUFACTURING CO., INC.  
Dept. 27/Box 518/Orange, Texas 77630  
Phone: 713-883-4246



# Treasurer's Report for First Quarter

January 31, 1982

	Nov. 1, 1980 Jan. 31, 1981	Nov. 1, 1981 Jan. 31, 1982	Gain
Cooperative Program	3,542,830.45	3,701,564.48	158,734.03
Designated & Reported	2,795,398.40	3,078,075.52	282,677.12
<b>Total</b>	<b>\$6,338,228.85</b>	<b>\$6,779,640.00</b>	<b>\$441,411.15</b>

The above represents a 4.48 percent increase in Cooperative Program gifts and 10.11 percent increase in Designated & Reported Gifts.

Lottie Moon Offering	Jan. 31, 1982	\$2,391,213.45
	Jan. 31, 1981	\$2,231,196.32
<b>Gain</b>		<b>\$ 160,017.13</b>

Church treasurers should check this report with their records. Gifts from missions and chapels are listed with the sponsoring church. Gifts listed were received from November 1, 1981 through January 31, 1982. If there are questions concerning this report, please contact the treasurer's office.

Note: At the same time last year, we had a 4.38 percent increase in Cooperative Program gifts and 5.32 percent increase in Designated and Reported Gifts. Lottie Moon offering is more than double the increase over the year before.

Church	Cooperative Program	Designated	Church	Cooperative Program	Designated
<b>ALPHA</b>					
Associational Chairman: Adonis Creel					
Centerville, First	725.00	1,268.00	New Concord	91.00	688.00
Cross Roads	194.01	142.00	New Hope	0.00	500.00
East Hickman	151.76	0.00	New Salem	825.13	488.85
Edgewood	63.00	150.00	Obion, First	2,386.19	2,416.75
Fairfield	508.05	220.34	Phillippy	30.00	0.00
Garrett	94.17	44.77	Pleasant Hill #1	525.00	1,056.50
Highland	397.19	186.71	Pleasant Hill #2	453.91	1,285.15
Hohenwald, First	867.08	538.00	Reelfoot	300.00	110.17
Lick Creek	93.64	44.00	Ridgely, First	4,117.87	3,190.77
Linden, First	359.00	351.00	Samburg	164.00	0.00
Lobelville, First	25.03	0.00	South Fulton, First	3,063.72	0.00
Maple Valley	54.76	0.00	Tiptonville, First	1,077.36	981.60
New Hope	60.43	100.00	Troy, First	893.97	1,178.56
Pine Grove	92.35	69.93	True Faith	120.00	0.00
Piney	27.82	0.00	Union City, First	4,388.26	2,050.29
Toms Creek	230.38	188.20	Union City, Second	3,106.38	1,841.65
Wrigley	387.09	61.26	Walnut Log	0.00	0.00
<b>Total</b>	<b>4,330.76</b>	<b>3,364.21</b>	Willingham Memorial	306.18	0.00
			Woodland Mills, First	1,754.16	3,132.70
			Wynnborg	413.43	1,483.00
			Association	0.00	550.00
			<b>Total</b>	<b>36,119.08</b>	<b>34,553.21</b>

## BEECH RIVER

Associational Chairman: Hoyt Wilson

Bath Springs	735.46	300.00
Beacon	0.00	25.00
Bear Creek	741.56	875.50
Bible Hill	0.00	206.20
Bolens Chapel	0.00	0.00
Bunches Chapel	0.00	0.00
Calvary	1,470.37	662.00
Chapel Hill	126.70	125.00
Corinth	80.00	25.00
Cub Creek Hall	0.00	0.00
Darden	0.00	185.86
Decaturville, First	150.00	400.00
Flatwoods	0.00	100.00
Hinkle	0.00	0.00
Hopewell	0.00	0.00
Huron	20.00	0.00
Jacks Creek	0.00	0.00
Judson	0.00	0.00
Lexington, First	6,045.87	6,882.87
Lone Chestnut	0.00	0.00
Luray	0.00	0.00
Mount Ararat	0.00	0.00
Mount Gilead	282.50	1,075.57
Mount Zion	0.00	95.00
New Beech Grove	0.00	0.00
New Chapel	0.00	27.00
New Hope	86.66	156.00
New Prospect	0.00	163.00
Parsons, First	5,409.11	1,617.80
Perryville, First	118.17	0.00
Pine Grove	0.00	0.00
Piney Creek	0.00	0.00
Ridge Grove	0.00	0.00
Rock Hill	631.67	205.00
Salem	0.00	20.00
Saltillo, First	362.02	0.00
Sand Ridge	824.56	1,500.00
Sardis	153.00	110.00
Sardis Ridge	0.00	0.00
Scotts Hill, First	0.00	0.00
Southside	0.00	0.00
Tamlin Chapel	0.00	0.00
Union	336.00	497.50
Union Grove	200.00	173.00
Wildersville	433.84	792.24
<b>Total</b>	<b>18,207.49</b>	<b>16,219.54</b>

## BEULAH

Associational Chairman: Bill Williams

Alamo	187.38	518.49
Aldridge	75.36	56.46
Bethel	90.00	0.00
Broadway	52.05	0.00
Calvary	1,412.12	0.00
Cottanwood	191.31	0.00
Cottanwood Grove	233.04	847.00
Cypress Creek	25.00	25.00
Fairview	100.00	100.00
Hornbeak	140.00	172.00
Johnsons Grove	124.60	52.70
Lakeview	75.00	138.00
Macedonia	351.86	340.94
Martin, First	6,250.00	9,646.41
McConnell	262.60	233.00
Mooring	20.00	0.00
Mount Moriah	75.00	0.00
Mount Olive	914.81	156.92
Mount Pelia	1,522.39	1,311.30

Church	Cooperative Program	Designated
<b>BIG EMORY</b>		
Associational Chairman: George Waddington		
Beech Park	1,413.66	1,691.34
Bethel	0.00	0.00
Big Emory	1,276.39	335.00
Calvary	150.00	700.00
Caney Ford	410.00	1,589.74
Cardiff	130.05	230.05
Cedar Grove	0.00	0.00
Central	2,203.18	1,813.50
Childs Memorial	731.68	518.29
Clax Gap	58.00	0.00
Clymersville	1,138.81	310.20
Coal Hill	319.31	128.57
Crab Orchard	759.00	427.20
Daysville	62.15	165.00
Deer Lodge, First	109.74	0.00
Dyllis	448.48	92.00
Eureka	369.50	771.34
Fairview	0.00	107.10
Kellytown	639.64	639.60
Kingston, First	8,250.00	4,816.25
Lakeview	237.00	500.00
Laurel Bluff	94.37	90.18
Lee Village	423.11	391.23
Liberty	1,507.20	3,132.70
Middle Creek	3,531.20	1,670.89
Mossy Grove	361.08	970.72
Oakdale, First	537.00	275.25
Orchard View	100.00	85.00
Petros	992.26	225.62
Pine Orchard	504.00	531.41
Pine Ridge	854.53	953.00
Piney	1,424.27	0.00
Piney Grove	528.22	234.55
Pleasant Grove	1,205.95	1,092.43
Pond Grove	740.47	226.21
Riggs Chapel	262.48	153.30
Riverside	1,702.52	473.00
Rockwood, First	9,014.99	1,963.09
Rockwood, Second	0.00	60.00
Shiloh	1,300.00	0.00
South Harriman	8,064.65	5,069.55
Sunbright, First	1,429.42	799.76
Trenton Street	10,450.06	2,888.52
Union	321.00	331.00
Union Chapel	135.74	320.00
Walnut Hill	586.89	259.91
Warburg, First	780.00	1,594.13
Whites Creek	580.64	469.13
<b>Total</b>	<b>66,148.64</b>	<b>39,095.76</b>

## BIG HATCHIE

Associational Chairman: Robert Lee

Asphort	279.64	85.25
Beaver	202.00	0.00
Brighton	9,839.40	4,850.63
Calvary Hill	311.86	0.00
Charleston	1,869.00	2,370.00
Covington, First	3,750.00	16,183.07
Durhamville	100.00	92.00
Eastland	180.67	248.08
Elim	71.86	0.00
Faith	0.00	657.46
Fellowship	1,115.53	235.45
Fulton	94.56	85.25
Garland	412.26	1,160.69
Goldust	0.00	0.00

Church	Cooperative Program	Designated
Grace	581.74	1,423.80
Henning	355.34	1,402.00
Keeling	0.00	0.00
Liberty	2,582.47	3,816.88
Mason, First	0.00	0.00
Mount Lebanon	196.96	0.00
Munford	1,406.20	990.21
Oak Grove	4,207.00	3,858.71
Olive Branch	165.78	116.37
Pleasant Grove	738.45	1,709.40
Rialto	22.00	90.00
Ripley, First	5,554.03	3,649.17
Ripley, First Indian	30.00	25.00
Salem	0.00	0.00
Smyrna	2,456.45	2,153.61
Trinity	649.00	1,520.71
Victory	62.62	134.43
Walnut Grove	306.59	274.73
Western Valley	237.30	0.00
Woodlawn	50.00	1,051.00
<b>Total</b>	<b>37,828.71</b>	<b>48,183.90</b>

## BLED SOE

Associational Chairman: Walt Warren

Antioch	33.99	0.00
Bledsoe Creek	278.46	60.00
Chestnut Grove	104.27	0.00
College Heights	4,686.27	281.50
Corum Hill	40.00	0.00
Cottontown	307.50	750.00
Dixon Creek	0.00	600.00
Fountain Head	150.00	75.00
Gallatin, First	10,155.37	11,790.90
Grace	572.79	317.45
Hartsville, First	938.48	1,019.00
Hillsdale	0.00	0.00
Immanuel	467.00	70.00
Indian Hills	500.00	275.62
La Fayette, First	949.96	308.63
Mitchellville	443.80	348.83
New Hope	0.00	411.00
Page Heights	605.54	167.50
Pleasant Valley	230.00	137.00
Portland, First	3,817.00	3,226.90
Red Bailings Spgs, 1st	32.00	80.00
Southside	0.00	1,310.00
Station Camp	0.00	0.00
Twin Hills	0.00	533.25
Westmoreland, First	292.04	407.45
<b>Total</b>	<b>24,604.47</b>	<b>27,170.03</b>

## BRADLEY COUNTY

Associational Chairman: Jimmy Ross

Antioch	0.00	0.00
Beacon	0.00	245.00
Bellefonte	1,635.52	0.00
Bethel	371.73	0.00
Big Spring	5,887.06	772.75
Blue Springs	377.10	326.00
Brittsville	0.00	150.00
Calvary	0.00	89.20
Candies Creek	1,648.40	175.00
Center Point	600.00	0.00
Charity	0.00	0.00
Charleston, First	0.00	1,533.26
Chestee	0.00	0.00
Cleveland, First	7,886.66	26,482.18
Clingan Ridge	298.13	0.00
Cloverleaf	0.00	0.00
Cohulla	0.00	0.00
Corinth	173.03	0.00
Council	0.00	277.00
East Cleveland	0.00	0.00
East View	0.00	296.30
Elkmont	0.00	0.00
Emmanuel	0.00	120.00
Fairview	147.70	0.00
Four Point	237.92	100.00
Galilee	79.21	0.00
Georgetown	757.27	31.83
Goodwill	0.00	125.00
Gum Spring	0.00	201.00
Hopewell	3,585.57	260.25
Lebanon	0.00	262.74
Macedonia	558.57	1,323.18
Maple Street	1,474.45	1,180.38
Michigan Avenue	1,230.97	0.00
Mount Carmel	1,261.15	1,548.71
New Friendship	1,191.09	172.83
New Hope Missionary	0.00	0.00
North Cleveland	5,689.08	1,548.08
Oak Grove	206.55	659.30
Parkway	245.92	183.50
Phillippi	543.07	0.00
Ridgeview	0.00	0.00
Samples Memorial	204.75	535.72
Stuart Park	902.51	1,512.80
Tasso	0.00	128.00
Thompson Springs	0.00	0.00
Union	0.00	175.50
Valley View	1,895.50	1,624.72
Washington Avenue	0.00	0.00
Waterville	335.00	4,390.00
West Cleveland	573.41	150.12
Westwood	9,397.23	7,779.85
White Oak	0.00	400.00
<b>Total</b>	<b>49,394.55</b>	<b>54,760.20</b>

## CAMPBELL COUNTY

Associational Chairman: K. V. Holt

Alder Springs	79.98	62.87
Anthras	0.00	0.00
Canby	98.10	150.00
Caryville, First	1,842.00	404.50
Cedar Creek	0.00	0.00
Cedar Hill	173.58	933.95
Central	0.00	0.00
Clairfield	452.00	175.10
Coolidge, First	50.00	0.00

Church	Cooperative Program	Designated
Demory	30.00	300.00
Eagan	59.00	55.00
East Jacksboro	57.04	352.29
East La Follette	268.00	507.25
Elk Valley, First	0.00	0.00
Elm Grove	0.00	0.00
Glade Springs	194.25	125.00
High Street	0.00	0.00
Hillcrest	0.00	7.25
Indian Creek	198.82	760.00
Indiana Avenue	220.02	425.00
Jacksboro, First	3,506.00	2,426.00
Jellico, First	1,640.00	2,113.18
La Follette, First	4,221.86	6,400.42
Lake View	45.00	75.00
Little Cave Creek	0.00	0.00
Macedonia	0.00	0.00
Midway	20.00	30.00
Marley	0.00	0.00
New Liberty	0.00	0.00
Newcomb	422.95	145.86
Oak Grove	0.00	142.00
Pioneer, First	0.00	0.00
Pruden, First	0.00	93.00
Round Rock	0.00	0.00
Royal Blue	0.00	0.00
Speedwell Academy	0.00	0.00
Victory	0.00	0.00
West La Follette	742.63	414.00
White Oak	0.00	0.00
Whitman	198.00	350.00
Total	14,519.23	16,447.67



# Allen finds confidence by depending on God

**EDITOR'S NOTE:** This is part of a series of feature stories on the executive heads of Southern Baptist agencies, boards, and institutions. Each article has been written by a public relations person within the agency.

By Bonita Sparrow

FORT WORTH, Tex. (BP) — If Jimmy Allen had his way, the lion would lie down with the lamb and swords would be beaten into plowshares — this minute.

"Unfortunately," Allen said wryly, "God keeps reminding me that I'm in sales. He's in management."

Jimmy R. Allen, third president of the Southern Baptist Radio and Television Commission (RTVC), is an activist, an innovator, a visionary who is intimidated only if he finds himself in a situation where he is not dependent on God. "Without that dependence, I'm a pushover," he acknowledged.

People who know Jimmy Allen do not consider him a pushover. But there is no shortage of those who consider him energetic. William Pinson, president of Golden Gate Baptist Theological Seminary, told those attending Allen's installation as RTVC president: "My job tonight is to bring the charge. My trying to charge Jimmy Allen is like a flashlight

battery approaching Hoover Dam."

The consuming passion in Allen's life is "the forwarding of the reign of God in the affairs of men. I see this telecommunications assignment at the RTVC as the major opportunity of the immediate future for the forwarding of that cause."

Allen's activities in two years at the RTVC have reaped results. He has been a prime mover in raising the trust level between his agency and other SBC entities and he conceived the American Christian Television System (ACTS), which will lead to a nationwide Baptist TV network. In August he led the RTVC to sign a \$2.1-million-a-year lease on a space satellite, the first step in making the network a reality.

Allen envisions the RTVC helping local churches gain new ways of access to the media. "I think we will put together, under the leadership of God, a delivery system with the technical ability to make good radio and television programming available to every home in America and we will help the world to be genuinely a neighborhood of Christians," he says.

With all his responsibilities, Allen is not too busy to be sensitive to the needs of others. One staffer told what happened when she was hospitalized.

"I didn't know Dr. Allen even knew my name, but he called me several times long distance to tell me he was praying for me," she said. "When he got home, he came to visit. I had been worried about who would take care of my



**AT BREAKFAST** — Jimmy and Wanda Allen play with "Tig" as they finish breakfast.

mother, when she called to tell me Mrs. Allen had been to see her, bringing a big bag of groceries. I quit worrying and concentrated on getting well."

Imbued with a strong sense of mission, Allen lives life in the fast lane. But he will occasionally slow down and let his soul catch up.

"Every so often, I go to the house we have down at Lake Brownwood and relax," he said. "I enjoy swimming and water-skiing and boating. I like to read — any kind of good fiction except romance novels — and I enjoy live drama and all kinds of spectator sports." He is an avid Dallas Cowboys fan and "worries" over the Baylor University Bears.

Allen turns impossibilities into probabilities. His entire career seems to have followed that course.

In the 1960s, as head of the Texas Baptist Christian Life Commission, Allen led Texas Baptists to take strong stands for racial justice. The San Antonio church he pastored in the 1970s was noted for its innovative social action and evangelistic programs. He dedicated his two years as SBC president to promoting Bold Mission Thrust, the denomination's effort to confront everyone in the world with the message of God by the year 2000.

He is known nationally. One of former President Carter's fact finders in Iran during the hostage crisis, Allen also has

met several times with Israel's Prime Minister Menchem Begin and has testified before that country's Knesset on bills relating to religious freedom in Israel.

But he has paid high dues for his achievements. During those days of racial unrest, he and his wife, Wanda, received abusive phone calls and hate mail. A cross was burned into the grass at their home.

There have been serious illness in his family and problems with their children which created another series of painful challenges. "Wanda and I have learned, in praying and working our way through these problems, to be very candid with each other as we try to discover where we each are," he says. "I'm a telephone person so when my schedule causes us to be apart we're still in daily contact."

Jimmy and Wanda Allen obviously care about each other. Both have a strong sense of humor and each has strengths from which the other draws. They make a point of having meals together. Breakfast usually ends with conversation and coffee on their patio accompanied by their Shih-Tzu, Tig (short for Tiger Euphrates).

Although problems with their children have ironed themselves out (one son graduates this year from Golden Gate seminary, the other two are living and working in San Antonio), the Allens have learned from that suffering and understand the pain of other parents in similar situations.

"I think the Father helps you work through to a sense of limited liability and you reach the time when you've done all you know to do to share what you believe, in a loving way, with the child," he says. "Then that child has to make this own judgments and becomes liable for those decisions. You cannot be liable for everything that people around you ultimately decide to do. You have to be as faithful as you know how to be with the responsibilities that you have."

Allen says God has been teaching him a number of things. "I'm a very impatient man who has had to learn patience with processes and with people. I have a constant prayer that my sense of urgency can be geared to other people's sense of pace. That is not always easy."

Asked how he would most want to be remembered, he quickly said, "As a man who loved Jesus Christ and wanted everything to be in tune with what Jesus wants."

## Interpretation

### Achieving God's purpose

By Herschel H. Hobbs

"And the two disciples heard him speak, and they followed Jesus" (John 1:37).

This is not a paradox. It is simply a statement of spiritual cause and effect. They heard John the Baptist speak and the result was that they followed Jesus.

This statement reflects the fact that a separate "John the Baptist movement" continued long after his death, perhaps as late as the close of the first century (Acts 19:1-6). It was not of John's doing (John 3:25-30), but was a case of mistaken loyalty. John the Evangelist takes note of this when he wrote his gospel, perhaps A.D. 80-90.

When the Baptist began his ministry, as was customary, certain ones became his disciples or learners. But no sooner did Jesus appear than he pointed them to Him.

Following Jesus' temptations in the wilderness, when He returned to the area where John was preaching, John pointed to Him as "the Lamb of God, which taketh away the sin of the world" (John 1:29). The next day he stood with two of his disciples. He told them to look to Jesus as the Lamb of God (John 1:36). It was his way of pointing away from himself to Jesus, for Jesus alone is God's Lamb as the sacrifice for the sins of the world. Had John been made of lesser stuff, he might have tried to capitalize upon his popularity for selfish reasons. Instead, he used it to point people to Jesus.

Any leader, pastor, or teacher who builds his work about himself is truant to his calling. Even if he succeeds by worldly standards, he fails by heaven's standard. Our first loyalty is to Jesus, not to one of His servants!

It sounds good to hear someone say, "You preached a great sermon today."

It is infinitely more glorious to hear, "You exalted a great Saviour today." Only thus will you one day hear the "well done" of the Lord.

### Videotape expands family enrichment

PORT ELIZABETH, South Africa — For the first time, a family enrichment conference for Southern Baptist missionary families has been videotaped for missionaries to use in churches where they work.

Missionary Frank Baker recorded a conference held in Potgietersrus, South Africa, for missionaries from Botswana, Bophuthatswana, South West Africa, South Africa, and Transkei.

Mr. and Mrs. C. W. Brister of Southwestern Baptist Theological Seminary and Truman Smith, the Foreign Mission Board's missionary family consultant and his wife, Gwen, led sessions on topics such as communication, healthy family functioning, and coping with conflict.

### Baptists in Surinam make plans to double

PARAMARIBO, Surinam — Surinamese Baptists and Southern Baptist missionaries recently mapped a three-year evangelistic strategy to double the membership of the four churches of the United Baptist Organization of Surinam.

This was the first strategy meeting involving both Surinamese and missionaries.

Mission Service Corps volunteers Loyd Corder, retired Home Mission Board staff member, and his wife, Trudy, led sessions on the workings of Baptist associations. Corder's ventriloquist dummy, "Joe the Baptist," entertained the 27 strategy session participants.

## Radio-TV Commission presents Abe Lincoln broadcasting awards

FORT WORTH, Tex. (BP) — John P. Criswell II, anchorman reporter and producer for Dallas' WFAA-TV, and Rick Devlin, vice-president and general manager of WOR-AM, New York City, won top Abe Lincoln Awards for excellence in broadcasting.

They received the honors in February in the 13th National Abe Lincoln Award program for broadcasters, sponsored by the Southern Baptist Radio and Television Commission to urge broadcasters to enrich their local communities through programming.

Criswell and Devlin were among eight finalists from across the nation. The two top winners were not named until the awards were presented before a crowd of nearly 800.

John Chancellor, anchorman and editor of "NBC Nightly News," was the keynote speaker and received the

distinguished communications medal, the highest award the RTVC gives.

Grady Nutt, humorist of Louisville, Ky., and regular on the television show, "Hee Haw," received the Christian Service Award.

Criswell was honored for encouraging citizen participation in fighting crime and for his efforts to help deaf people and children with special needs.

Devlin was cited for an unusual contribution toward improving the environment of his city, especially through the clean-up campaign, "New York Sweeps."

The other six finalists in the competition were: Eleanor Curry, KSOL-FM, San Mateo, Calif.; Jeff Davidson, WXIA-TV, Atlanta; Ike Newkirk, WQXI-FM, Atlanta; Ethna Elaine Odum, KALB-Windsor, WFTV-TV, Orlando, Fla.



# LIFE AND WORK SERIES

## Lesson for March 7

# Unity in diversity

By Ben W. Bledsoe, chaplain  
Memphis Correctional Center, Memphis

Basic Passage: 1 Corinthians 12:12-27  
Focal Passage: 1 Corinthians 12:14-27

I have a specific job description for my work as a prison chaplain. A particular kind of work is expected of me in that role.

I am a kind of "religion broker" to men with varieties of interests and different needs. I am a crisis counselor and a marriage and family counselor. I am an institutional pastor. No one else at the Memphis Correctional Center does exactly what I do.

However, I also work with other people at MCC who do jobs necessary to the correctional goal of redeeming lives. There are guards, teachers, counselors, administrative personnel, cooks, janitors, maintenance people, hospital staff, and many others necessary for effectively operating a prison.

The staff at Memphis Correctional Center attempts to work together as a team. Our task is to keep state felons confined until they can be legally released. Our goal is to instill in these men some new values that will prevent their continued criminal behavior or return to prison.

I am also a member of Union Avenue Baptist Church, Memphis. The tasks and goals we have as a church are obviously not the same as those in the prison, but our need to work together as a team (or family) is just as important. Our tasks as a church are to worship, teach, evangelize, and minister. Our goal is to reach the world with the claims of Jesus Christ, until we all become like Him.

I was not given a written job description for what was expected of me as a member of Union Avenue, but I have a pretty clear idea of what I should do. I have been impressed to teach a Sunday School class, tithe and attend faithfully, and assist in the area of pastoral counseling. I found my place by responding to needs I saw that fit with gifts I had. I am one of about 500 active members. It takes all of us working cooperatively for Union Avenue to function properly.

Union Avenue is one of 30,000 Southern Baptist churches in the United States, all of whom comprise the Body of Christ. The worldwide Body of Christ is made up of various church denominations and some believers with strange tags.



Bledsoe

Paul's analogy of the church functioning as a human body implies that a group of people will work together smoothly without even thinking about it. Many bodily functions do operate spontaneously. Fortunately, I do not have to will my stomach to digest food, my lungs to process air, or my heart to push blood through my veins. But unfortunately, a church does not operate automatically in this way. Each member of the body (the church) has an independent gift or gifts to be exercised for the good of the whole body. If I withhold my gift from the body, the whole body suffers, including me. Some members have attitude problems, so their efforts are more destructive than edifying. How should these members be dealt with?

The apostle's idea of the one body, many parts, has profound significance. The spiritual gifts I have, functioning with the spiritual gifts you have, complete the total ministry of the church body. These gifts will not be identical, which means no one can do what I must do for God's kingdom. These gifts, though different, will not be competitive or conflictual. People in the church, working under the leadership of God's Spirit, will be cooperative and not antagonistic.

Two points need to be underlined. 1) Unity is not uniformity. 2) Diversity is not divisiveness. For a church to maintain balance, sometimes unity must be stressed, and sometimes diversity. Individuals experience almost constant tension between the two extremes of self-actualization and loving community.

Which aspect of growth do you need to work on? How is what you do contributing to the edifying of the church? How is the church helping you to become a more mature, independent, Christ-like individual?

The goal of the church is to develop members who know themselves and appreciate others. We as members should strive toward satisfaction with the gifts God has given us and to lovingly interact with other members so as to build a valuable family-like experience. Churches need independent and cooperative members in order to achieve the goal set by the Holy Spirit.

## ADD-A-PAD PEW UPHOLSTERING

Our installers have upholstered over 80,000 lineal feet of pews over the past six years. We offer a 15 year wear warranty. We can usually upholster your pews on site for less cost than loose cushions! Call us for a FREE estimate:  
Call Toll Free: 1-800-334-8130  
Or write:



Church Interiors, Inc.

P.O. Box 5346 High Point, NC 27262

## World's Fair Rentals

Rooms in attractive private homes within 10 miles of World's Fair. Some with private entrance/access to den and patio. Breakfast will be served with some accommodations.

Call or write:

Old South Hosts  
Mrs. W. L. Payne  
2200 Highland Dr.  
Knoxville, TN 37918  
Phone 615-689-7007

# Reagan attends worship services, fourth time since inauguration

By Stan Haste

WASHINGTON (BP)— President Reagan attended church services Sunday, Feb. 21, for only the fourth time since assuming the presidency 13 months ago.

Accompanied by Mrs. Reagan, the president attended a special service at historic Christ Church in Alexandria, Va., commemorating the 250th birthday of George Washington.

According to the White House office of media relations, the first family attended services previously at National Presbyterian Church, St. John's Episcopal Church, and Belair Presby-

terian Church in southern California.

In a year-end interview with U.S. News & World Report, Reagan said he has limited his church attendance because of security precautions imposed by the U.S. Secret Service following the attempt on his life last March 31 and rumors that a Libyan hit squad has targeted him for assassination.

All worshippers at the Feb. 21 service at Christ Church, an Episcopal parish attended by the nation's first president, were required to pass through a metal detecting device similar to those used at airports.

White House officials say that all large crowds are now being screened through such devices before any public appearance of the president.

In spite of infrequent church attendance, Reagan continues to receive vocal support from many conservative religious leaders, most conspicuously from electronic evangelists such as Jerry Falwell, who actively supported Reagan during the 1980 campaign. Falwell and others claimed that Reagan's positions on issues were more moral than those of incumbent Jimmy Carter.

## Don Whitt accepts call of First church, Milan

Don Whitt accepted a call from First Baptist Church, Milan, to come as its pastor, a ministry he began Jan. 17.

Whitt is a former pastor of North Athens Baptist Church, Athens; Shiloh Baptist Church, Kingston; and churches in Texas.

A native of Knoxville, Whitt is a graduate of Carson-Newman College, Jefferson City, and Southwestern Baptist Theological Seminary, Fort Worth, Tex.



Whitt

## World's Fair Rentals

Nice Trailers, completely furnished.  
Only 5 miles from Fair.  
Call or write for information:  
Bobby or Betty Gerwin  
607 Ozark Circle Knoxville, TN 37912  
Phone (615) 687-5126

Pulpits, baptistries  
pews chairs



Bill Vanwinkle  
Route 1, Grace Ave.  
Rockville, TN 37153

Add-a-pad Specialists

## Welcome Youth Evangelism Conference

The Nashville area Bonanzas welcome the Tennessee Youth Evangelism Conference on March 5 and 6.

While in Nashville, Bonanza invites you to join us for lunch or dinner at any of our 10 convenient locations.



Head for Bonanza instead!

## WOLFE BROS. & CO. PINEY FLATS, TENN.

Manufacturers of DISTINCTIVE  
**CHURCH FURNITURE**  
Since 1888. Write for free estimate.

## TRAVEL TRAILER LOTS NEAR "WORLD'S FAIR" - KNOXVILLE, TENN. MAY-OCTOBER 1982

30 lots size 40'x90, concrete pads, plus yard for rent two miles west of Fair site on city bus line. Now taking reservations, \$30.00 per night, includes all utilities. (This is not a camping area.) Payment in full with reservation, 30 day notice for cancellation and full refund or change of date. For more information call:

615-323-6201

Or send reservation to: Paul Brown  
WOOD HILL COURT  
3267 Sutherland Ave.  
Knoxville, Tenn. 37919



Church	Cooperative Program	Designated	Church	Cooperative Program	Designated	Church	Cooperative Program	Designated	Church	Cooperative Program	Designated
Four Mile	747.00	550.00	<b>CONCORD</b>			Association	.00	187.07	Keith Springs	96.56	65.00
Freindly Hill	84.87	.00	Associational Chairman: Joe Elliott			Total	36,375.54	28,291.04	Liberty	302.05	205.85
Friendship	.00	514.16	Barfield	390.00	114.00	<b>CUMBERLAND GAP</b>			Lincoln Heights	747.00	.00
Friendship, First	5,209.00	2,969.60	Belle Aire	8,918.01	3,753.48	Associational Chairman: Lawrence Powell			Little Mountain	4.50	.00
Grandview	1,814.88	1,261.40	Bradleys Creek	69.23	227.50	Atlantus Hill	238.56	232.64	Manchester, First	4,861.47	3,306.02
Greenback Memorial	971.84	1,050.00	Christiana, First	82.18	567.00	Bethel	.00	.00	Maxwell	277.92	700.00
Happy Valley	173.50	400.45	Eagleview	105.00	104.25	Big Spring Union	.00	35.00	Midway	260.00	200.00
Hillview	301.36	569.00	Fellowship	.00	.00	Blairs Creek	.00	90.00	Monteagle, First	59.93	.00
Hopewell	335.77	175.00	Florence	583.21	.00	Brooks Memorial	.00	.00	Oaklawn	650.01	.00
Immanuel	.00	4,511.88	Giles Creek	283.27	75.00	Calvary	.00	.00	Prairie Plains	54.00	132.65
Kaglays Chapel	438.45	366.25	Grace	390.00	302.50	Carrs Chapel	167.12	525.54	Riva Lake	469.49	50.00
Keebles Chapel	212.34	.00	Green Hill	305.00	234.00	Cave Spring Missionary	.00	.00	Rutledge Falls	634.00	.00
Kinzell Springs	.00	200.00	Hillview	423.63	293.05	Cedar Fork	.00	72.70	Southside	89.31	385.17
Lake View	.00	.00	Holly Grove	357.78	419.59	Cedar Grove	.00	.00	Spring Creek	166.81	175.49
Laurel Bank	1,064.91	817.33	Immanuel	1,314.00	667.75	Chadwell Station	113.04	308.07	Summitville	153.98	130.55
Liberty	171.31	105.40	Lascassas	1,736.92	1,907.38	Cumberland Gap, First	.00	.00	Tracy City, First	566.00	.00
Louisville, First	235.86	285.85	LaVergne, First	853.83	603.43	Duncan Chapel	.00	-120.00	Trinity	2,914.64	1,581.70
Macedonia	.00	.00	Maney Avenue	313.57	150.31	East Hopewell	.00	813.32	Tullahoma, First	16,735.55	1,420.36
Madison Avenue	1,540.00	7,041.60	Midland	198.63	149.63	Fairview	.00	.00	Victory	30.37	.00
Maple Grove	113.31	1,333.55	Milton	370.00	105.00	Forge Ridge	.00	75.00	Westwood	162.00	.00
Marble Hill	.00	.00	Miracle	1,293.39	1,008.42	Gap Creek	.00	515.28	Winchester, First	4,067.02	3,178.23
Maryville, First	20,424.95	23,250.93	Mount Carmel	.00	.00	Gibson Station	.00	.00	Total	44,118.54	21,566.63
Meadowbrook	.00	25.00	Mount Hermon	939.00	166.67	Goin's Chapel	.00	125.00	<b>DYER</b>		
Memorial	2,184.93	351.00	Mount Pleasant	170.19	.00	Greens Chapel	.00	27.00	Associational Chairman: Truman Spurgin		
Midway	288.64	291.74	Mount View	682.00	68.00	Harrogate, First	667.75	3,605.00	Beech Grove	250.00	120.50
Millers Cove	7,706.85	836.20	Murfreesboro, First	7,666.66	14,210.73	Haynes Flat	.00	1,023.71	Bogata	20.00	.00
Monte Visto	649.51	273.11	Murfreesboro, Third	3,306.26	1,725.40	Head of Barran	.00	.00	Calvary Chapel	.00	51.50
Mount Lebanon	7,364.76	7,582.22	Nolensville	139.00	250.00	Hope Missionary	.00	.00	Calvary Hill	1,074.67	89.25
Mount Zion	.00	.00	Patterson	143.00	175.00	Hopewell	.00	.00	Curve	1,889.20	366.03
Niles Ferry	3,124.25	1,486.92	Powells Chapel	2,226.55	401.00	Howards Quarter	.00	.00	Dyersburg, First	6,750.00	10,162.43
Oak Street	646.36	757.50	Rucker	23.92	.00	Indian Creek	.00	.00	Dyersburg, Second	300.00	326.18
Oak View	843.00	.00	Smyrna, First	5,025.00	7,280.39	Liberty Missionary	.00	.00	Elon	.00	.00
Old Chiholwee	131.41	.00	Southeast	4,276.85	5,134.11	Liberty Hill	28.00	.00	Emmaus	200.00	82.03
Old Piney Grove	678.33	1,375.00	Stones River	1,214.00	414.00	Little Mulberry	.00	225.46	Enon	1,300.86	1,782.77
Pilgrim	399.60	541.50	Taylor's Chapel	.00	.00	Lone Hill Missionary	.00	.00	Evansville	20.00	.00
Piney Grove	2,452.41	1,655.83	Victory	74.45	.00	Lone Holly	.00	.00	Fairview	135.00	.00
Piney Level	725.00	607.00	Walter Hill, First	150.00	84.00	M C M	.00	.00	Finley	60.00	726.05
Pleasant Grove	4,021.59	3,189.52	Wards Grove	822.84	792.23	Midway Missionary	515.39	.00	Fort Hudson	120.00	245.00
Prospect	716.11	2,000.00	Wayside	.00	.00	Mount Gilead	.00	.00	Fowlkes	3,558.17	863.45
Providence	1,011.22	2,950.28	Westgate	213.00	383.35	Mount Pleasant	.00	.00	Gates	673.72	1,435.23
Rockford	1,121.10	902.98	Woodbury Road	567.00	606.06	Mount Zion	.00	.00	Halls, First	2,500.00	3,116.95
Rocky Branch	520.08	575.75	Association	.00	18.94	Mountain View	.00	.00	Halls Westside	350.00	166.00
Salem	528.17	871.41	Total	45,833.07	42,524.26	New Hope	.00	.00	Harmony	468.88	58.27
Seymour, First	10,343.26	3,427.73	<b>COPPER BASIN</b>			New Salem	.00	162.00	Hawthorne	994.80	300.00
Six Mile	651.00	2,028.00	Associational Chairman: Billy Joe Barnes			New Tazewell, First	1,499.08	745.00	Hillcrest	4,139.14	2,389.43
Smoky View	181.11	913.31	Bethlehem	.00	.00	Oak Grove	.00	100.00	Lenox	445.00	65.00
Springview	631.94	800.10	Coletown	197.12	312.64	Peoples Missionary	.00	.00	Macedonia	771.00	2,151.00
Stack Creek	8,137.77	3,939.78	Isabella	109.22	200.00	Pleasant View	.00	.00	Marys Chapel	346.95	.00
Trinity	.00	.00	Maple Grove	.00	.00	Providence	.00	30.00	McCulloughs Chapel	239.00	83.10
Union Grove	.00	550.45	Mine City	2,379.01	2,000.00	Pump Hollow	.00	.00	Miston	25.00	40.00
Unity	1,204.87	2,044.48	Mount Harmony	.00	20.00	Pump Springs	.00	15.00	Mount Tiroah	1,762.62	907.36
Village Missionary	263.47	157.16	Mount Vernon	.00	.00	Raven Hill	.00	.00	Mount Vernon	507.39	134.00
West Maryville	1,108.89	847.85	Mount Zion	201.78	325.00	Red Hill	.00	.00	New Freedom	10.00	.00
Wildwood	1,568.67	1,548.17	New Zion	156.49	200.00	Riley Memorial	.00	.00	New Mitchell Grove	30.00	141.35
Zion Chapel	706.21	614.25	Pleasant Hill	88.44	.00	Riverside	.00	.00	Newborn First	2,417.47	4,596.88
Association	.00	75.00	Turtletown	560.16	300.00	Shawnee	482.15	1,200.00	Parish Chapel	183.00	61.41
Total	151,417.60	125,396.08	Zion Hill	650.24	500.00	Springdale	.00	60.45	Ro Ellen	125.00	77.55
<b>CLIFTON</b>			Total	4,254.02	3,946.08	Springfield	.00	.00	Southside	2,652.43	709.15
Associational Chairman: Clyde Disney			<b>CROCKETT COUNTY</b>			Straight Creek	.00	.00	Springhill	920.00	300.00
Andersonville, First	2,358.80	276.85	Associational Chairman: Gayle Alexander			Sugar Grove	.00	.00	Trimble	2,128.00	1,150.53
Bailey	.00	350.00	Alamo, First	4,750.02	3,258.00	Summeys Bridge	.00	.00	West Side	233.66	186.00
Beech Grove	247.90	495.79	Barkers Chapel	216.98	.00	Sunrise Missionary	.00	.00	Williams Chapel	45.00	213.37
Bethel	200.00	854.75	Bells, First	2,258.84	4,136.73	Tazewell	415.00	592.00	Woodville	365.19	30.00
Black Oak	3,578.38	2,600.77	Cairo	.00	286.55	Town Creek	.00	237.76	Zion Hill	141.27	60.00
Blowing Springs	459.00	200.00	Cross Roads	1,262.75	1,036.30	Underwood Grove	.00	826.00	Total	38,152.42	33,187.78
Briceville, First	.00	155.00	Friendship	766.00	551.00	Union Chapel	.00	175.00	<b>EAST TENNESSEE</b>		
(H) Calvary	1,372.68	800.00	Gadsden	.00	112.00	Walnut Hill	50.00	200.00	Associational Chairman: Frank Bell		
(O R) Calvary	4,316.80	1,949.33	Johnson Grove	.00	50.00	Westside Missionary	.00	.00	Baysinger Chapel	.00	25.00
Central	18,008.40	2,210.40	Mauy City, First	952.69	2,895.62	Wolfenbarger Chapel	.00	.00	Bear Creek	.00	.00
Clear Branch	2,932.00	1,433.00	Midway	86.01	.00	Total	4,175.99	12,274.60	Bethel	277.10	.00
Clinch River	1,641.00	3,229.00	Providence	93.54	276.25	<b>CUMBERLAND PLATEAU</b>			Browns Missionary	.00	61.55
Clinton, First	12,926.73	8,468.86	South Fork	202.08	391.00	Associational Chairman:			Calvary	130.39	235.35
Clinton, Second	4,762.00	4,894.00	Three Way	.00	.00	Bethlehem	.00	205.00	Caney Creek	.00	.00
Dutch Valley, First	.00	100.00	Walnut Hill	375.00	1,000.00	Calvary	30.00	.00	Cave Hill	363.50	300.00
Edgemoor	1,271.64	1,090.00	Total	10,963.91	13,993.45	Clear Creek	99.75	25.00	Centerville	100.00	.00
Fairview	1,268.46	541.25	<b>CUMBERLAND</b>			Crossville, First	3,854.19	4,224.33	Clay Creek	.00	.00
Farmers Grove	331.79	537.12	Associational Chairman: Spencer Johnson			Cumberland Homestead	2,349.31	1,649.02	Deep Gap	143.00	283.00
Frost Bottom	100.50	134.00	Alva	18.42	18.42	Emmanuel	155.00	777.65	Del Rio	.00	.00
Glenwood	2,388.73	1,602.56	Blooming Grove	572.00	613.00	Fairfield Glade	422.01	337.30	Denton	193.02	100.00
Graves Gap	.00	.00	Cannon, First	195.00	207.23	Fairview	.00	.00	Dutch Bottom	.00	75.00
Grove Hill	.00	.00	Charlotte, First	570.83	70.24	Fradonia	402.99	42.00	English Creek	736.14	873.25
Guiding Star	.00	75.00	Clarksville, First	10,333.29	11,263.31	Haleys Grove	404.05	480.80	Forest Hill	184.00	231.00
Indian Bluff	320.35	.00	Cross Creek	270.13	267.86	Isaline	148.13	32.82	French Braad	.00	.00
Island Ford	121.26	.00	Crossland Avenue	324.05	324.27	Mayland	209.32	150.00	Garvers Chapel	102.47	.00
Island Home	.00	.00	Cumberland City, First	.00	.00	Memorial	733.94	1,967.03	Holders Grove	278.82	760.70
Jarnigans Chapel	.00	.00	Cumberland Drive	3,496.35	365.25	Meridian	61.00	10.00	Liberty Hill	.00	.00
Lake City, First	1,377.99	1,062.00	Dotsenville	84.00	.00	Mountain View	398.99	112.71	Lincoln Avenue	3,905.15	3,249.27
Lakeview											



Church	Cooperative Program	Designated	Church	Cooperative Program	Designated	Church	Cooperative Program	Designated	Church	Cooperative Program	Designated
Hickory Grove.....	410.03	211.21	Narrow Valley.....	99.12	65.61	HARDMAN COUNTY			Jonesboro, First.....	3,748.01	4,817.56
Hickory Withe, First.....	1,346.26	1,782.47	New Blackwell.....	171.59	300.00	Associational Chairman: Claude Hammers			Jonesboro, Second.....	75.00	100.00
Kirk.....	351.67	855.00	New Corinth.....	154.35	236.45	Bethlehem.....	3.00	304.00	King Springs.....	269.46	.00
Liberty.....	344.07	190.00	New Prospect.....	28.95	.00	Bolivar, First.....	5,574.16	7,428.27	Lovelace.....	.00	.00
Morris Memorial.....	243.00	.00	Neolan.....	.00	.00	Brints Chapel.....	.00	.00	Midway.....	197.31	351.01
Mount Mariah.....	276.25	50.00	Oak Grove.....	.00	.00	Cloverport.....	153.66	367.75	Mill Creek.....	.00	.00
Mount Olive.....	10.00	.00	Oakland.....	1,486.94	754.21	Claremont.....	430.38	1,125.00	Mount Holston.....	127.48	348.65
Oak Grove.....	406.00	119.00	Powder Springs.....	35.00	25.00	Disle Hills.....	340.00	.00	Mount Zion.....	321.85	53.24
Oakland.....	630.00	367.44	Puncheon Camp.....	.00	.00	Ebenezer.....	.00	.00	Mountain View.....	.00	324.00
Rossville.....	270.00	.00	Red House.....	.00	.00	Enon.....	.00	.00	Muddy Creek.....	132.73	.00
Shady Grove.....	.00	.00	Riverview.....	.00	.00	Essary Springs.....	.00	.00	New Lebanon.....	.00	283.00
Somerville, First.....	3,716.60	1,897.65	Rutledge.....	1,066.61	137.74	Friendship.....	60.00	.00	New Salem.....	659.84	217.14
Williston.....	.00	1,153.51	Southside.....	162.85	.00	Grand Junction, First.....	2,250.00	1,232.00	New Victory.....	468.68	167.00
Total.....	8,522.85	7,031.28	Sunrise.....	178.39	640.63	Hatchie.....	493.57	.00	Ninth Street.....	1,425.30	1,999.53
GIBSON COUNTY			Tampico.....	28.13	96.88	Hebron.....	274.19	300.00	North Johnson City.....	1,778.53	2,324.10
Associational Chairman: Clyde Crocker			Washburn.....	62.77	36.50	Hickory Valley.....	800.00	452.00	Oak Dale.....	196.35	136.00
Antioch.....	.00	20.00	Total.....	9,478.47	9,714.43	Hornsby.....	746.80	120.00	Oak Glen.....	93.04	100.00
Avondale.....	486.01	385.95	HAMILTON COUNTY			Middleburg.....	200.00	300.00	Oak Grove.....	1,476.90	1,325.43
Beech Grove.....	463.65	92.70	Associational Chairman: Henry Preston			Middleton, First.....	1,260.00	1,650.00	Oak Hill.....	782.29	1,252.40
Bethel, Humboldt.....	75.00	30.00	Alpine.....	549.63	570.50	Midway.....	68.32	60.00	Omega.....	93.00	.00
Bethel, Yorkville.....	606.10	95.59	Apison.....	2,565.91	4,115.58	New Bethel.....	153.66	81.62	Pinecrest.....	1,994.48	208.15
Bethpage.....	1,109.50	660.81	Avondale.....	.00	768.25	New Union.....	485.14	585.47	Piney Flats.....	358.06	1,247.79
Bradford, First.....	2,190.00	1,661.43	Bartlebaugh.....	.00	.00	Parrans Chapel.....	2,292.37	402.25	Pleasant Grove.....	263.79	78.00
(H) Calvary.....	45.00	119.00	Bayside.....	3,927.69	5,025.56	Piney Grove.....	473.11	.00	River Bend.....	501.32	59.00
(R) Calvary.....	221.92	150.00	Beacon.....	157.46	90.03	Pleasant Grove.....	.00	.00	Road Hill.....	346.60	307.50
Center.....	60.00	110.00	Birchwood.....	1,056.00	2,629.35	Pocahontas, First.....	1,036.07	208.00	Roseville.....	34.00	.00
Chapel Hill.....	594.27	326.85	Brainerd.....	14,515.50	165.25	Porters Creek.....	139.98	264.95	Shady Grove.....	.00	.00
China Grove.....	400.00	1,600.00	Brainerd Hills.....	5,483.98	3,864.30	Rocky Springs.....	.00	.00	Shallow Ford.....	1,250.40	1,434.41
Clear Creek.....	383.73	126.81	Cedar Hill.....	1,681.92	5,991.00	Saulsburry.....	721.93	1,351.59	Skyline Heights.....	1,915.60	2,770.67
Dyer, First.....	4,792.21	3,445.57	(C) Central.....	18,249.99	15,043.22	Shandy.....	.00	.00	Snow Memorial.....	692.05	895.00
Eldad.....	240.00	125.00	(H) Central.....	16,604.83	.00	Silerston.....	793.05	538.00	Solomons Temple.....	.00	79.12
Emmanuel.....	1,949.49	2,219.67	Chamberlain Avenue.....	217.06	286.62	Toone.....	1,212.88	1,432.37	Southside.....	695.02	2,201.20
Fellowship.....	254.30	204.62	Charity.....	.00	.00	Trinity.....	55.00	121.00	Southwestern.....	3,599.31	2,239.17
Fruitland.....	445.00	335.00	Chattanooga, First.....	45,208.35	46,231.25	Walnut Grove.....	275.23	479.59	Sulphur Springs.....	1,223.16	3,415.43
Gibson.....	392.00	193.00	Chattanooga, Second.....	814.00	1,632.00	West Memorial.....	739.11	258.00	Sunrise.....	69.00	63.72
Hickory Grove.....	845.40	591.00	Clifton Hill.....	1,095.92	575.82	Whiteville, First.....	2,144.06	661.39	Sunset Village.....	150.00	125.00
Hillcrest.....	.00	.00	Community Missionary.....	.00	.00	Association.....	.00	900.00	Telford.....	.00	.00
Humboldt, First.....	6,397.41	7,522.97	Concord.....	8,233.15	5,930.30	Total.....	23,175.67	20,623.25	Tennessee Avenue.....	.00	.00
Idlewild.....	806.00	250.00	Cross Roads.....	.00	300.00	HAYWOOD			Towering Oaks.....	5,614.42	279.32
Immanuel.....	.00	.00	Daisy, First.....	2,778.77	3,324.64	Associational Chairman: Dewey Barber			Tusculum.....	980.47	3,000.00
Keely Mill.....	255.60	120.00	Dalewood.....	.00	.00	Allen.....	2,098.00	3,041.17	Unaka Avenue.....	3,942.46	.00
Kenton, First.....	9,823.80	1,984.00	Dayspring.....	.00	.00	Antioch.....	.00	.00	Unica.....	660.43	400.00
(K) Laneview.....	194.00	45.53	Denny Hill.....	.00	.00	Brownsville.....	12,249.99	15,779.76	Union.....	.00	100.00
(T) Laneview.....	62.94	36.00	East Brainerd.....	2,107.04	1,544.76	Calvary.....	555.50	657.50	University Parkway.....	1,684.02	1,684.02
Latham Chapel.....	615.00	227.00	East Chattanooga.....	4,160.66	375.25	Harmony.....	1,711.08	2,170.30	Valley Hills.....	544.54	238.00
Lavinia.....	176.45	280.87	East Lake.....	5,619.76	4,863.61	Holly Grove.....	1,480.77	2,467.00	Virginia Avenue.....	1,745.51	2,531.21
Maranatha.....	188.85	.00	East Ridge.....	8,891.57	6,693.15	Poplar Corner.....	604.00	1,423.01	Volunteer.....	217.00	470.00
Medina.....	5,154.50	1,918.89	Eastwood.....	4,604.04	400.00	Shaws Chapel.....	51.50	82.55	Walkers Fork.....	.00	78.25
Midway.....	374.19	281.00	Edwards Point.....	.00	.00	Stanton.....	286.38	315.00	Walnut Grove.....	48.25	.00
Milton, First.....	10,434.69	8,672.55	Fairview.....	565.00	50.00	Woodland.....	658.17	195.00	West Hills.....	563.83	900.00
Mount Pisgah.....	213.00	295.55	Falling Water.....	1,549.60	318.42	Zion.....	2,011.33	1,593.79	Westley Heights.....	473.86	.00
Mount Pleasant.....	690.00	1,949.10	Falling Water Tab.....	354.18	171.06	Total.....	21,706.72	27,725.08	Woodlawn.....	750.00	.00
New Bethlehem.....	1,240.12	2,110.79	First Calvary.....	576.03	.00	HIWASSEE			Total.....	121,346.76	114,584.45
New Hope.....	271.25	553.00	Frawley.....	86.49	713.78	Associational Chairman: Ray Hughes			Basin Chapel.....	22.90	.00
Northern Chapel.....	.00	.00	Friendship.....	.00	267.31	Chapman Grove.....	.00	300.00	Beech Creek.....	.00	475.00
Northside.....	2,034.54	3,737.35	Grace Avenue.....	21.22	.00	Concord.....	.00	237.46	Belmont.....	.00	1,052.00
Oak Grove.....	444.84	100.00	Greenwood.....	.00	.00	Paint Rock.....	406.98	253.00	Bentleys Chapel.....	72.68	.00
Oakwood.....	797.79	691.98	Guild, First.....	30.00	.00	Peakland Missionary.....	30.00	.00	Bethel.....	127.91	160.00
Old Bethlehem.....	184.00	162.00	Harrison.....	200.00	214.60	Pisgah.....	.00	716.28	Big Creek.....	60.00	399.34
Poplar Grove.....	758.59	464.55	Hickory Valley.....	562.63	245.00	Ten Mile.....	874.87	373.00	Caney Creek.....	474.00	505.00
Poplar Springs.....	713.00	360.75	High Point.....	185.19	.00	Total.....	1,311.85	1,879.74	Carlers Valley.....	554.35	122.00
Rutherford, First.....	500.00	1,678.11	Hilltop.....	50.00	150.00	HOLSTON			Cave Springs.....	13.25	.00
Salem.....	1,109.73	809.51	Hixson, First.....	10,814.97	1,868.25	Associational Chairman: Byron Barker			Chaptack.....	102.01	1,606.02
Southside.....	183.14	40.00	Hughes Avenue.....	2,771.56	100.00	Antioch.....	3,206.30	1,037.00	Church Hill, First.....	1,596.87	1,663.31
Springhill.....	573.91	326.00	Johns Memorial.....	466.00	.00	Ask Missionary.....	103.00	100.00	Compromise.....	.00	.00
Trenton, First.....	5,289.90	833.34	Kings Point.....	100.85	585.00	Baileyan, First.....	.00	538.78	Duck Creek.....	.00	1,045.00
Walnut Grove.....	250.00	532.01	Kingwood.....	.00	.00	Bethany.....	109.80	108.00	East Rogersville.....	900.96	2,664.76
West Side.....	1,054.83	302.40	Lakeway.....	.00	45.00	Bethel View.....	622.52	.00	Elm Springs.....	110.00	.00
White Hall.....	2,061.00	1,528.00	Lookout Mountain.....	600.00	1,992.00	(B) Bethel.....	146.86	60.00	Faith.....	.00	.00
Total.....	68,406.74	50,306.25	Lookout Valley.....	3,222.46	2,433.35	Bethlehem.....	2,439.15	1,106.79	Fishers Creek.....	30.00	.00
GILES COUNTY			Maranatha.....	1,927.83	519.00	Blountville, First.....	3,685.68	2,729.94	Gills Chapel.....	200.25	110.35
Associational Chairman: Matt Pinkleton			Maple Grove.....	519.00	.00	Bluff City.....	754.61	743.69	Henards Chapel.....	896.54	940.00
Bradshaw.....	129.24	50.00	Meadowview.....	459.54	.00	Bluff City, First.....	8,685.79	4,313.99	Hickory Cove.....	703.70	758.74
Elkton.....	673.70	65.45	Memorial.....	3,608.02	3,038.75	Boone Trail.....	935.57	142.00	Hoves Chapel.....	125.00	2,100.00
Hannah.....	.00	.00	Middle Valley.....	2,710.34	.00	Boones Creek.....	196.36	2,824.27	Independence.....	35.00	66.00
Highland.....	1,877.18	1,356.68	Morris Hill.....	2,396.64	2,632.83	Bowmantown.....	600.62	526.00	Keplar.....	.00	.00
Liberty Hill.....	75.00	.00	Mount Carmel.....	1,614.47	4,051.42	(B) Calvary.....	5,233.00	247.00	Kyles Ford.....	.00	200.00
Lynnville, First.....	84.41	.00	Mountain Creek.....	1,891.93	1,312.10	(C) Calvary.....	3,977.27	3,513.82	Longs Bend.....	.00	.00
Minnaw Branch.....	15.00	15.00	Mountain View.....	321.17	243.25	(E) Calvary.....	300.00	500.00	Lynoes Chapel.....	173.80	178.84
Minor Hill, First.....	145.15	130.00	New Bethel.....	80.00	195.42	(J C) Calvary.....	98.00	288.00	Lyons Park.....	.00	.00
New Hope.....	400.00	1,434.00	New Liberty.....	94.00	35.00	Cedar Creek.....	.00	.00	Maple Hill.....	169.12	.00
New Zion.....	199.30	430									



Church	Cooperative Program	Designated
Houston	28.19	.00
Kelleys Chapel	50.00	125.00
Leatherwood	75.00	37.73
Lutts	98.39	145.63
Memorial	.00	.00
Oak Grove	.00	10.00
Oak Ridge	10.00	.00
Philadelphia	397.01	358.30
Rays Chapel	.00	.00
State Line	.00	.00
Upper Green River	62.30	400.00
Waynesboro, First	410.45	272.00
Zion	165.49	.00
Total	3,256.39	2,925.67

## JEFFERSON COUNTY

Associational Chairman: Elton Johnson

Antioch	.00	150.00
Beaver Creek	232.93	1,100.00
Buffalo Grove	512.67	326.10
Calvary	.00	.00
Central Heights	688.54	2,714.27
Dandridge, First	8,227.00	10,745.00
Deep Springs	464.86	811.35
Dumplin	903.91	2,001.52
Emmanuel	644.41	2,135.51
Flat Gap	197.74	585.83
French Broad	.00	2,116.00
Friendsview	.00	.00
Good Hope	76.25	410.28
Hilltop	.00	126.00
Halston Memorial	565.03	.00
Jefferson City, First	11,989.98	14,352.74
Mansfield Gap	380.27	946.00
Mill Springs	1,439.42	1,106.67
Mountain View	.00	1,221.00
Mullins Chapel	.00	90.92
Nances Grove	.00	.00
New Hope	351.17	.00
New Market	1,872.59	76.00
Nina	.00	193.00
Piedmont	3,984.72	915.02
Pleasant Grove (N.M.)	200.00	940.00
Pleasant Grove, Piney	2,006.00	2,299.35
Rocky Valley	99.73	310.00
Strawberry Pk., First	460.83	1,590.28
Swans Chapel	.00	1,600.00
Talbot	1,373.00	.00
White Pine, First	1,916.60	4,795.00
Total	38,587.71	53,658.54

## JUDSON

Associational Chairman: Randy Franklin

Cedar Hill	.00	.00
Harmony	.00	.00
Liberty	.00	.00
Maple Grove	.00	.00
Missionary Ridge	.00	.00
Mount Zion	25.00	.00
New Hope	1,207.75	160.00
Old New Hope	150.00	462.35
Pleasant Ridge	.00	.00
Walnut Grove	.00	75.00
Total	1,382.75	697.35

## KNOX COUNTY

Associational Chairman: Leonard Markham

Alice Bell	417.43	485.00
Arlington	7,661.75	8,584.34
Atkins	240.00	143.00
Ball Camp	3,347.50	2,538.46
Basswood	.00	100.00
Boys Mountain	.00	.00
Beaumont Avenue	.00	.00
Beaver Dam	5,400.00	3,208.09
Bell Avenue	3,072.37	3,921.51
Belmont Heights	.00	.00
Bethany	.00	.00
Black Oak Heights	6,692.00	3,900.00
Blount Avenue	.00	.00
Bon View	50.00	60.00
Branville	.00	208.47
Broadway	.00	.00
Buffet Heights	1,100.00	3,812.29
Burnetts Creek	.00	.00
Callahan Road	.00	.00
Calvary	7,000.99	.00
Cedar Bluff	192.23	.00
(B) Central	21,249.99	34,839.54
Central of Fin. City	15,000.00	34,619.70
Churchwell Avenue	.00	1,050.03
City View	3,666.42	.00
Clear Springs	2,656.46	1,277.50
Community	.00	.00
Concord, First	15,755.72	9,997.47
Copper Ridge	.00	37.02
Cornerstone	92.00	.00
Corryton	6,017.94	1,766.07
Cumberland	7,206.49	7,185.88
East Sunnyview	.00	.00
Eastwood	844.15	.00
Ebenezer	689.69	820.36
Elm Street	268.18	.00
Euclid Avenue	2,456.72	3,811.64
Fairview	743.50	1,018.15
Fair Harts	.00	.00
Faith and Hope	91.87	85.00
Faith Temple	.00	.00
Farragut	60.00	37.59
Fellowship	1,038.76	1,102.90
Fifth Avenue	2,500.00	858.50
Flint Gap	.00	.00
Fort Hill	340.00	1,086.00
Fort Sanders	602.93	49.65
Fountain City, First	773.40	1,336.78
Galilee	2,312.77	5,130.03
Gallaher Memorial	879.15	430.00
Gayland Heights	397.51	597.00
Gillespie Avenue	1,075.53	1,218.03

Glenwood	2,200.00	2,988.00
Grace	6,675.91	7,788.68
Grassy Valley	549.98	1,278.20
Graveson	579.60	160.00
Greenway	1,374.62	1,229.88
Grove City	.00	.00
Grove Heights	.00	.00
Hill Crest	313.69	134.71
Hillside	138.54	59.38
Hines Valley	.00	.00
Holt Avenue	.00	.00
Hollywood Hills	133.00	.00
Holston	1,231.76	.00
House Mountain	.00	622.16
Immanuel	4,075.90	2,050.10
Inskip	3,000.00	25.00
Island Home	2,466.56	1,586.03
Jersey Ave.	.00	.00
John Sevier	385.00	2,367.00
Jones Chapel	.00	1,205.38
Knoxville, First	17,166.60	37,698.66
Knoxville, Second	1,693.62	3,439.75
Knoxville, Third	205.98	350.50
Lake Country	.00	147.82
Lincoln Park	12,413.65	8,823.84
Linden Avenue	.00	175.70
Little Flat Creek	820.48	.00
Lonsdale	375.00	467.00
Loveland	394.24	200.00
Lyons Creek	2,354.14	3,949.25
Marble City	181.37	680.14
Marbledale	508.61	492.00
Mars Hill	1,246.62	1,710.75
Mascot	1,260.21	816.00
McCalla Avenue	7,925.00	6,779.48
Meadow View	120.00	450.00
Meridian	11,063.52	11,655.51
Middlebrook Pike	105.00	176.00
Miracle	.00	.00
Moreland Heights	198.21	.00
Mount Carmel	832.20	2,802.33
Mount Harmony	4,066.81	2,610.04
Mount Olive	8,499.99	14,250.46
Mount Olive, East	.00	.00
Mountain View	779.77	248.00
New Hope	.00	.00
New Hopewell	1,270.92	1,939.00
New Salem	.00	.00
North Acres	.00	406.68
North Hills	.00	423.00
North Knoxville	3,533.60	.00
North Side	.00	.00
Northwest	210.00	441.40
Norwood	500.00	1,439.84
Oakwood	2,400.00	526.50
Parklane	526.88	598.81
Parkway	4,566.36	1,382.40
Peoples Missionary	50.79	80.00
Piney Grove	.00	366.72
Powell, First	2,915.80	26.00
Ramsey Heights	205.28	.00
Reunion	285.53	33.00
Ridgedale	850.99	2,332.08
Ridgeview	1,690.38	3,042.22
Riverdale	219.70	.00
Riverview	1,561.70	2,880.08
Rocky Hill	1,166.67	397.66
Roseberry	605.12	1,243.37
Ruggles Ferry	65.70	.00
Salem	5,676.00	1,181.73
Scottish Pike	.00	.00
Seven Islands	.00	.00
Sevier Heights	5,249.92	11,377.05
Sevier Home	45.44	214.00
Sharon	3,200.00	6,021.63
Smithwood	3,200.00	12,463.85
South Knoxville	3,000.00	5,939.75
Stoney Point	160.00	.00
Sunset Heights	.00	543.00
Tarklin Valley	.00	6.44
Tennessee Avenue	454.00	555.00
Third Creek	577.28	710.15
Thorn Grove	780.08	.00
Three Point	.00	.00
Timothy Street	421.78	494.79
Tower Heights	.00	.00
Trinity	1,298.94	805.40
Tuckahoe	.00	.00
Union	2,444.87	2,766.00
Unity	.00	293.62
(B C) Valley Grove	.00	.00
(C H) Valley Grove	9,624.99	11,067.86
Vestal	.00	.00
Wallace Memorial	44,060.79	51,357.88
Washington Avenue	605.00	843.00
Washington Pike	2,131.30	3,086.70
West End	.00	138.00
West Haven	4,624.65	.00
West Hills	4,000.00	3,215.07
West Knoxville	2,577.37	.00
West Lonsdale	4,791.52	8,413.35
West Side	.00	658.16
Association	.00	1,977.00
Total	338,926.18	396,274.12

## LAWRENCE COUNTY

Associational Chairman: James Jolly

Barnesville	.00	.00
Beach Grove	.00	.00
Bethel	.00	.00
Blooming Grove	20.00	225.00
Bonnertown	200.00	350.00
Brace	120.00	.00
Center Point	.00	200.00
Deerfield	265.52	436.70
Ethridge First	194.75	566.50
Evas Chapel	179.43	65.51
Faith	200.00	574.80
Five Points	60.00	80.00
Gum Springs	531.70	.00

Highland Park	1,786.49	1,770.73
Immanuel	891.24	1,050.00
Iron City First	324.00	.00
Lawrenceburg, First	3,012.37	2,683.82
Leoma	660.00	1,539.94
Liberty Grove	.00	.00
Loretto, First	525.52	313.50
Macedonia	60.00	40.00
Mars Hill	918.33	713.21
Meadow View	375.00	880.52
Mount Horeb	532.00	1,207.00
New Prospect	300.00	363.00
O. K.	.00	150.00
Oak Hill	.00	150.00
Park Grove	322.63	175.00
Pine Grove	155.00	46.26
Pleasant Grove	.00	.00
Ramah	105.00	.00
St. Joseph, First	358.28	357.10
Summertown	950.47	795.91
West Point	143.14	.00
Total	13,190.87	14,584.50

## LOUDON COUNTY

Associational Chairman: Charles Earl

Antioch	.00	455.17
Beech Chapel	199.00	274.00
Bears Chapel	211.21	640.00
Bethany	2,462.45	638.42
Blairland	2,497.45	107.00
(LC) Calvary	6,178.95	1,347.81
(L) Calvary	.00	.00
Cave Creek	.00	45.00
Corinth	1,518.90	1,755.77
Dixie Lee	1,821.31	1,544.27
Dogwood	.00	.00
East Hills	215.16	64.47
Everett Road	100.00	178.40
Friendship	.00	1,308.17
Highland Park	.00	830.00
Kingship Pike	721.68	220.77
Lenoir City, First	11,151.66	8,971.46
Lenoir City, Second	392.71	113.00
Loudon, First	1,673.81	1,134.36
Margaretton	255.00	.00
Mount Pleasant	42.88	69.79
Mount Zion	198.95	803.47
Mountain View	.00	.00
Nelson Street	.00	230.32
New Midway	115.98	259.32
New Providence	2,378.00	1,000.00
Oral	702.65	1,491.65
Philadelphia, First	900.67	500.00
Pine Grove	.00	30.00
Pleasant Hill	4,530.91	2,221.57
Prospect	905.31	1,056.00
Riverview	358.19	200.00
Silver Ridge	.00	154.00
South Holston	.00	.00
Stockton Valley	166.00	453.00
Stoney Point	.00	.00
Union Fork Creek	319.72	100.00
Vaughns Chapel	398.71	323.74
West Broadway	.00	103.91
Association	.00	500.00
Total	40,417.26	29,124.84

## McMINN-MEIGS

Associational Chairman: David Lyles

Antioch	1,564.90	2,100.00
Athens, First	25,094.31	20,482.73
Bethel Springs	.00	.00
Bethesda	.00	.00
Brookhill	100.00	190.45
Calhoun, First	3,006.88	1,866.33
(D) Calvary	.00	150.00
(E) Calvary	30.00	231.00
Cambria	.00	100.00
Central	1,344.28	743.87
Clay Hill	.00	.00
Clear Springs	.00	300.00
Clearwater	576.00	871.00
Cog Hill	332.48	380.55
Conasauga	54.72	.00
Cotton Port	97.67	.00
Decatur, First	.00	481.00
Dixon Avenue	.00	115.20
Double Springs	.00	497.90
East Athens	5,998.23	242.30
East Niota	.00	1,149.22
East View	360.00	1,077.00
Eastonlee	6,510.36	2,118.86
Englewood, First	1,500.00	300.00
Etowah, First	3,790.00	5,717.90
Five Point	.00	.00
Friendship	.00	.00
Good Hope	27.00	1,218.50
Good Springs	1,137.49	205.78
Hiwassee	.00	.00
Idlewild	203.76	600.00
Lakeview	.00	.00
Lamontville	.00	187.42
Manilla Chapel	.00	.00
Marshall Hill	1,000.00	903.00
Mc Mahan Calvary	544.19	.00
Mt. Harmony #1	634.89	674.79
Mt. Harmony #2	393.78	751.00
Mount Pisgah	280.58	1,216.44
Mount Verd	387.96	100.00
New Bethel	.00	.00
New Hopewell	.00	150.00
New Zion	75.00	.00
Niota, First	400.00	1,230.00
North Athens	4,143.89	1,707.52
North Etowah	10,057.81	6,343.09
Oak Grove	1,000.00	1,500.00
Old Salem	200.00	.00
Parkway	178.09	.00
Pond Hill	500.00	.00
Posey Avenue	.00	.00



Church	Cooperative Program	Designated	Church	Cooperative Program	Designated	Church	Cooperative Program	Designated	Church	Cooperative Program	Designated
Deep Springs.....	230.05	.00	Brook Hollow.....	6,874.98	8,627.44	Hurricane Grove.....	214.75	.00	Thankful.....	.00	.00
Emory Valley.....	.00	.00	Brooksides.....	1,493.07	1,968.25	Immanuel.....	252.04	257.72	Three Springs.....	.00	100.00
Highland.....	890.17	.00	Calvary.....	500.86	.00	Lewisburg, First.....	4,573.80	2,780.67	Valley View.....	.00	25.00
Hillville.....	.00	.00	Centennial.....	30.00	330.00	Longview.....	902.35	865.86	Warrensburg.....	742.64	586.50
Hinds Creek.....	119.92	.00	Central.....	.00	.00	Lynchburg, First.....	217.81	410.05	Westview.....	.00	252.00
Hinds Creek Missionary.....	.00	.00	Charlotte Road.....	1,922.28	1,414.28	Mount Lebanon.....	.00	28.00	White Oak Grove.....	358.16	1,812.00
Home Faith.....	.00	.00	College Grove.....	116.11	.00	New Bethel.....	524.40	335.00	Whitesburg.....	235.51	503.61
Mount Harmony.....	.00	.00	Concord.....	1,003.16	2,053.00	New Hope.....	.00	100.00	Witt.....	477.72	328.28
Mount Zion.....	180.96	60.55	Crievewood.....	9,649.40	755.90	North Fork.....	832.75	462.05	Total.....	58,796.26	74,625.30
New Liberty.....	214.00	50.00	Cross Keys.....	41.86	6.95	Parkview.....	1,872.58	436.20			
New Pleasant Gap.....	285.59	.00	Dalemere.....	185.00	.00	Richland.....	92.58	76.15			
Old Beverly.....	.00	.00	Dalewood.....	8,608.34	7,119.25	Rover.....	364.97	314.85			
Pleasant Gap.....	83.24	.00	Dickerson Road.....	2,224.73	136.00	Shelbyville, First.....	8,673.02	8,350.60			
Pleasant Hill.....	.00	.00	Dickson, First.....	5,766.11	5,321.98	Shelbyville Mills.....	3,326.40	2,136.40			
Riverview (A.C.).....	675.94	.00	Donelson View.....	2,173.09	1,510.11	Short Creek.....	.00	210.00			
Riverview (B.C.).....	.00	.00	Donelson, First.....	8,212.18	9,471.75	Smyrna.....	301.13	604.19			
Stonewall.....	.00	.00	Eastland.....	7,755.96	5,642.76	Southside.....	1,071.94	518.00			
Sutherland Ave.....	40.18	.00	Eastside.....	334.01	450.00	Unionville, First.....	150.97	106.00			
Texas Valley.....	.00	.00	Eastwood.....	377.02	175.85	Wartrace.....	576.96	697.30			
Union.....	670.22	.00	Edgefield.....	1,878.87	2,227.84	Association.....	.00	50.00			
Valley Grove.....	.00	.00	Elkins Ave.....	300.92	61.00	Leatherwood.....	31,374.51	23,800.08			
Zion Hill.....	.00	.00	Fairview, First.....	363.53	158.00						
Association.....	.00	500.00	Faith Temple.....	.00	115.65						
Total.....	5,491.79	3,093.55	Fern Avenue.....	.00	.00						
			Forest Hills.....	1,599.90	5,365.18						
			Franklin, First.....	4,817.39	14.00						
			Freeland.....	.00	.00						
			Friendly Chapel.....	66.52	61.88						
			Gallatin Road.....	3,420.55	2,873.16						
			Glendale.....	1,065.50	3,108.77						
			Glenwood.....	2,160.70	2,236.53						
			Goodlettsville, First.....	13,593.00	1,493.26						
			Grace.....	7,949.47	3,229.84						
			Grandview.....	5,040.14	3,052.46						
			Grassland Heights.....	750.87	.00						
			Grays Point.....	147.04	82.87						
			Green Hill.....	3,545.22	3,300.99						
			Harpeth Heights.....	3,517.20	4,129.38						
			Harsh Chapel.....	1,397.70	28.90						
			Haywood Hills.....	12,660.71	8,795.35						
			Hendersonville, First.....	12,000.00	15,451.80						
			Hermitage, First.....	395.21	254.00						
			Hermitage Hills.....	7,546.51	730.00						
			Hillcrest.....	314.12	.00						
			Hillhurst.....	2,444.79	1,777.11						
			Hillsboro.....	51.37	130.05						
			Holiday Heights.....	1,133.31	.00						
			Immanuel.....	7,537.05	10,581.67						
			Inglewood.....	12,854.11	9,749.50						
			Ivy Memorial.....	652.33	981.27						
			Joelton, First.....	3,125.93	401.30						
			Judson.....	49,002.06	15,844.93						
			Lakeview.....	2,371.98	1,095.77						
			Lakewood.....	5,578.00	35.00						
			Liberty.....	.00	.00						
			Lincaya Hills.....	8,779.59	1,359.00						
			Lockeland.....	5,879.26	3,580.36						
			Long Hollow.....	2,234.05	.00						
			Lyle Lane.....	483.21	74.00						
			Madison Creek.....	686.64	231.25						
			Madison Heights.....	2,505.93	702.59						
			Madison, First.....	5,510.00	2,989.69						
			Mail Creek.....	244.22	407.83						
			Manchester.....	20,049.11	28,847.30						
			Nashville, First.....	1,095.56	260.50						
			Nashville, Third.....	3,223.68	957.88						
			Neelys Bend.....	2,349.11	119.95						
			New Hope.....	6,861.98	10,279.65						
			Old Hickory, First.....	8,041.69	8,248.20						
			Park Avenue.....	3,751.05	1,758.60						
			Parkway.....	.00	.00						
			Pegram, First.....	550.08	.00						
			Peytonville.....	48.00	.00						
			Pleasant View.....	1,122.00	89.00						
			Pomona.....	165.12	4.00						
			Radford.....	.00	29.00						
			Radnor.....	400.00	.00						
			Rayon City.....	622.12	.00						
			Richland.....	1,300.00	1,108.50						
			Riverside.....	1,197.19	.00						
			Rosedale.....	883.97	.00						
			Salem.....	.00	600.00						
			Saturn Drive.....	3,960.87	2,444.13						
			Scottdale.....	562.22	239.43						
			Shelby Avenue.....	2,325.00	2,037.45						
			Smith Springs.....	1,300.00	1,950.00						
			South Gate.....	.00	.00						
			Temple.....	1,705.00	3,410.00						
			Tulip Grove.....	300.00	.00						
			Tusculum Hills.....	5,772.37	3,333.38						
			Two Rivers.....	42,083.52	275.00						
			Una.....	666.63	2,498.54						
			Union Hill.....	1,216.16	74.06						
			Valley View.....	2,023.01	3,414.80						
			Walker Memorial.....	5,432.00	1,355.00						
			West Nashville.....	260.14	55.00						
			West Trinity Lane.....	132.30	39.82						
			West View.....	76.92	121.50						
			Westwood.....	2,625.00	.00						
			White Bluff, First.....	356.70	50.00						
			Whitsets Chapel.....	631.23	.00						
			Whitworth Memorial.....	.00	.00						
			Woodbine.....	4,151.95	808.87						
			Woodcock Memorial.....	306.99	84.64						
			Woodmont.....	40,263.68	4,373.34						
			Total.....	496,161.08	284,248.34						



Church	Cooperative Program	Designated	Church	Cooperative Program	Designated	Church	Cooperative Program	Designated	Church	Cooperative Program	Designated
North Springfield	3,571.90	541.18	Red Bank	.00	.00	Sky View	650.76	333.20	Wilhite	357.00	450.00
Oak Grove	1,450.29	5,152.54	Red Bank, First	.00	75.00	Southland	11,459.26	9,613.64	Woodcliff	.00	.00
Oakland	1,413.28	447.21	Richardsons Cove	94.05	.00	Southmoor	.00	.00	Total	30,876.58	35,058.27
Orlando	2,467.48	1,387.00	Roaring Fork	.00	2,867.55	Speedway Terrace	.00	4,331.58	SULLIVAN		
Pleasant Hill	2,085.57	951.50	Sevierville, First	22,493.37	10,996.61	Summer Ave.	455.59	1,287.00	Associational Chairman: Ivan Roiley		
Red River	.00	.00	Sevierville, Second	189.18	586.25	Tchulahoma	.00	.00	Bloomingdale	895.89	.00
Ridgetop, First	598.06	895.74	Shady	369.75	250.00	Temple	12,606.73	1,678.38	Calvary	4,446.19	2,604.00
Rock Springs	419.00	483.59	Shiloh	.00	.00	Towering Oaks	1,955.65	.00	Cedar Grove	416.00	678.36
Springfield	15,677.94	9,476.99	Sims Chapel	300.00	392.29	Trafalgar Village	1,625.03	232.05	Colonial Heights	14,340.00	8,291.79
Springhill	100.75	355.00	Sugar Loaf	133.18	.00	Trinity	10,004.18	1,000.00	Fort Robinson	10,179.99	5,580.90
White House, First	430.82	1,500.00	Trinity	.00	.00	Union Avenue	5,000.00	10,745.00	Litz Manor	2,349.94	1,100.54
Williams Chapel	459.00	539.00	Union Valley	427.21	.00	Victory Heights	375.00	.00	Gravelly	645.89	209.03
Total	59,984.30	40,124.16	Valley View	25.00	150.00	Walnut Grove	520.68	317.00	Greenvale	.00	285.48
SALEM			Waldens Creek	125.00	.00	Wells Station	6,769.78	8,310.08	Indian Springs	10,775.01	4,556.17
Associational Chairman: C. W. Palmier			Walnut Creek	400.00	122.00	West Froyser	150.00	387.36	Kingsport, First	76,000.00	24,648.04
Auburn	671.72	4,004.74	Wears Valley	186.97	4,981.75	White Station	2,275.00	1,633.50	Lynn Garden	1,569.00	453.70
Burt	736.00	182.00	Zion Grove	187.31	.00	Whitehaven	17,342.73	14,584.28	Long Island	102.00	203.94
Calvary	241.69	.00	Zion Hill	693.82	925.04	Whittem Memorial	1,520.00	100.00	Lynn Garden	3,150.21	2,146.96
Center Hill	75.00	175.00	Total	35,106.42	38,219.16	Woodstock	596.87	322.00	Orebank	1,084.00	1,010.21
Coopers Chapel	.00	.00	SHELBY COUNTY			Association	.00	97.14	Reservoir Road	750.17	305.06
Covenant	321.00	.00	Associational Chairman: Jerry Glisson			Total	556,317.70	470,721.71	Springdale	345.49	.00
Dale Ridge	.00	.00	Agape	3,060.34	920.27	SHILOH			Sullivan	1,361.32	1,996.13
Dowelltown	115.00	112.00	Ardmore	13,457.31	8,209.40	Associational Chairman: Matt Tomlin			Summersville	460.00	597.36
Dry Creek	.00	.00	Arlington	641.34	.00	Adamsville, First	1,500.00	450.00	Sunnyside	.00	5,260.31
Elizabeth Chapel	.00	.00	Audubon Park	9,762.07	8,870.70	Bethel Springs, First	619.63	.00	Vernon Heights	316.00	251.68
Indian Creek Memorial	264.93	277.00	Balmoral	5,418.84	3,298.79	Butler Chapel	120.45	273.96	West Colonial Hills	1,125.00	123.59
Mount Herman	233.18	81.45	Bartlett	15,638.68	6,454.23	Calvary	18.44	.00	West View	370.00	120.00
Mount Zion	181.69	57.25	Bellevue	79,333.32	82,613.34	Center Hill	546.14	300.00	Total	130,682.10	60,423.25
New Home	.00	.00	Benninton Park	75.00	55.00	Chapel Hill	.00	.00	SWEETWATER		
New Hope	48.24	121.41	Berclair	7,521.26	7,884.17	Chewalla	342.66	534.49	Associational Chairman:		
Plainview	224.88	.00	Beverly Hills	3,157.51	4,967.31	Clear Creek	.00	482.16	Allona	.00	.00
Pleasant View	205.24	.00	Big Creek	694.50	1.60	Counce, First	2,402.78	1,169.87	Antioch	.00	.00
Prosperity	934.54	507.51	Blue Ridge Park	753.26	151.00	Crump, First	456.04	.00	Beaitys Chapel	.00	.00
Salem	894.97	3,446.67	Boulevard	6,501.40	2,298.25	Curry Chapel	.00	.00	Bethlehem	140.25	80.25
Shiloh	244.02	.00	Broadmoor	18,796.36	16,184.90	Falcon	140.41	.00	Big Creek	.00	305.25
Smithville, First	1,263.64	3,288.49	Broadway	3,675.00	1,397.76	Forty-Forks	.00	.00	Calvary	.00	79.76
Snow Hill	311.73	527.50	Brunswick	3,783.00	2,477.59	Friendship	75.00	30.00	Cane Creek	.00	.00
Sycamore	138.85	97.03	Bunty Street	139.21	205.12	Good Hope	.00	.00	Cedar Fork	952.66	1,800.00
Upper Hellon	.00	180.87	Calvary	350.00	395.00	Gravel Hill	855.87	300.00	Cedar Valley	685.61	397.00
West Main	500.00	1,501.30	Capleville	8.22	.00	Hopewell	1,624.26	887.27	Chestua	558.54	1,180.00
Whorton Springs	316.77	215.00	Charjean	232.56	45.00	Lakeview	138.00	491.93	Chilhowee	.00	.00
Wolf Creek	.00	50.00	Cherokee	9,690.78	1,951.82	Lorraine	57.73	69.15	Christianburg	255.69	528.31
Woodbury, First	4,041.00	4,731.00	Cherry Road	3,500.00	.00	Michie, First	300.00	2,148.87	Citico	197.00	324.00
Total	11,964.09	19,556.22	Collierville, First	16,377.94	.00	Morris Chapel	223.23	97.05	Clifton	.00	.00
SEQUATCHIE VALLEY			Colonial	15,350.18	666.90	Mount Gilead	500.89	4.83	Coker Creek	.00	.00
Associational Chairman: M. J. Strickland			Cordova	3,383.26	3,572.70	Mount Herman	330.00	133.00	Compromise	.00	50.00
Baptist Hill	266.45	405.00	Cottonwood Heights	.00	413.15	Mount Zion	155.25	100.00	Druid Hills	.00	.00
Cartwright	824.96	289.00	Covington Pike	1,206.46	4,218.81	New Harmony	.00	.00	Ebaner	174.00	.00
Cold Springs	100.00	75.00	Crestview	963.48	561.40	New Hope	29.38	.00	Fairview	.00	.00
Daus	138.91	100.00	Dellwood	600.00	1,244.00	New Hope (S)	.00	.00	Fairview Tabernacle	525.00	1,670.05
Dunlap, First	2,189.57	613.00	Eads	288.30	23.97	Olive Hill, East	.00	125.00	Four-Eleven	.00	.00
East Valley	.00	.00	East Acres	.00	.00	Olive Hill, West	39.52	.00	Friendship	.00	877.79
Ebenezer	657.52	418.00	East Park	14,993.50	1,800.87	Pleasant Site	129.65	.00	Glenlock	.00	.00
Eatonville	1,214.42	300.00	Egypt	84.74	154.80	Ramer	1,042.00	1,077.00	Gregorys Chapel	230.14	30.52
Flat Mountain	339.70	227.64	Ellendale	8,451.67	4,031.12	Savannah, First	2,106.00	3,478.87	Holly Springs	.00	.00
Grace	107.74	.00	Elliston	900.00	139.00	Selmer, First	7,850.00	3,337.70	Hopewell Springs	75.00	100.00
Jasper, First	3,895.78	6,164.59	Emmanuel	.00	.00	Sharon	343.97	227.37	Howards Chapel	.00	.00
Kimball	986.00	520.25	Eudora	3,833.34	3,400.00	Southside	416.34	.00	Island Creek	.00	.00
Laoger	129.00	307.27	Fairlawn	1,773.22	1,323.75	Trinity	25.00	50.14	Lakeside	.00	.00
Lees Station	82.11	.00	Fellowship	1,338.30	.00	Turkey Creek	228.40	612.40	Long Ridge	.00	.00
Midway	92.40	7.15	Fisherville, First	1,148.77	1,873.14	West Shiloh	600.00	1,115.00	Macedonia	.00	.00
Mineral Springs	45.00	315.00	Forest Hill	1,066.98	.00	Total	23,217.04	17,496.06	Madisonville, First	5,124.99	7,124.05
Mount Calvary	250.85	245.00	Froyser	6,210.69	7,922.42	STEWART COUNTY			Maple Springs	.00	.00
Palmer, First	50.00	.00	Georgian Hills	7,236.10	4,633.17	Associational Chairman: Russell Luffman			Millers Chapel	.00	28.94
Pikeville, 1st So.	1,064.23	1,566.00	Germantown	16,859.22	2,053.32	Bear Springs	45.00	44.85	Mount Harmony	.00	142.50
Richard City, First	105.00	234.00	Graceland	5,609.26	1,014.10	Big Rock	150.00	559.00	Mount Isabella	.00	.00
Sequatchie, First	272.31	132.00	Graham Heights	.00	160.00	Carlisle	.00	.00	Mount Pleasant	.00	63.10
S. Pittsburg, First	4,269.61	4,951.35	Greenhills	2,357.32	765.54	Corinth	.00	462.10	Mount Vernon	.00	.00
South Whitwell	512.45	1,355.85	Greenlaw	.00	.00	Dover, First	1,691.22	1,148.00	Mount Zion	310.26	1,155.25
Whitwell, First	1,432.33	3,500.52	Havenview	750.00	.00	East Oak Grove	.00	.00	Murphy	.00	159.36
Total	19,026.34	21,726.62	Hickory Hills	4,688.98	469.60	Fairview	.00	.00	New Bethany	64.00	210.40
SEVIER COUNTY			Hickory Ridge	3,725.00	16.70	Havlicek Creek	140.06	.00	New Macedonia	.00	1,500.00
Associational Chairman: Ray Williams			Highland Heights	12,512.25	11,726.02	Hurricane Creek	140.06	.00	New Providence	228.00	.00
Alder Branch	1,597.12	2,796.65	Hollywood	1,289.00	660.10	Lakeview	60.00	.00	North Sweetwater	.00	354.11
Antioch	191.66	.00	Holmes Street	517.00	270.00	Little Rock	50.00	50.00	Natchez Creek	150.00	412.14
Banner	322.25	200.00	Kensington	3,006.85	535.90	Midway	336.00	43.46	Oak Grove	.00	284.60
Beech Springs	.00	100.00	La Belle Haven	3,966.25	4,605.41	Mount Sinal	.00	.00	Oakland	152.00	144.00
Bells Chapel	159.02	.00	La Belle Place	1,965.55	.00	New Haven	75.00	45.00	Old Sweetwater	.00	50.00
Bethel	586.43	1,043.21	Lakeshores	424.54	386.00	Pleasant Grove	.00	74.00	Piney Grove	.00	.00
Blowing Cove	11.54	.00	Lamar Heights	4,424.91	5,831.15	Pugh Flat	.00	.00	Poplar Bluff	.00	578.22
Boyd's Creek	573.15	83.00	Lamar Terrace	.00	.00	Walnut Grove	.00	.00	Reed Springs	75.00	836.64
Bradleys Chapel	.00	.00	Leaclair	7,431.84	2,305.22	Total	2,547.28	2,426.41	Rocky Springs	255.00	850.00
Calvary	.00	.00	Leawood	13,279.32	8,639.66	STONE			Rural Vale	.00	.00
Conner Heights	.00	.00	Longcrest	459.51	650.14	Associational Chairman: Mrs. Lola McCormick			Shady Grove	.00	.00
Covepoint	21.00	.00	Lucy	360.00	1,163.95	Algood, First	562.00	.00	Sheltons Grove	.00	.00
Dripping Springs	196.93	.00	Macon Road	.00	.00	Bangham Heights	803.88	355.65	Shoal Creek		



Church	Cooperative Program	Designated
New Union.....	2,422.37	814.50
Ogden.....	.00	624.45
Pennine.....	84.39	864.17
Saint Clair.....	142.03	284.00
Sale Creek.....	119.27	139.06
Salem.....	554.28	516.58
Smyrna.....	327.03	657.82
Spring City, First.....	5,154.63	1,965.74
Walden Ridge.....	548.00	1,525.50
Washington.....	263.40	100.00
Wolf Creek.....	1,346.18	791.38
Yellow Creek.....	388.07	1,540.17
Association.....	.00	35.00
Total.....	17,771.14	13,787.34

## TRUETT

## Associational Chairman:

Cedar Grove.....	363.00	200.00
Immanuel.....	.00	118.34
Liberty.....	125.91	251.81
McEwen, First.....	607.60	2,123.00
Oak Grove.....	140.64	166.00
Sylvia.....	1,113.44	306.57
Trace Creek.....	2,217.21	1,377.71
Waverly, First.....	3,629.56	3,104.56
Total.....	8,197.36	7,647.99

## UNION

## Associational Chairman: Bill Barruff

Bear Cove.....	1,559.30	1,684.50
Boiling Springs.....	137.58	129.00
Doyle, First.....	248.73	.00
Greenwood.....	286.00	118.00
Gum Springs.....	770.19	1,463.82
Hickory Valley.....	.00	.00
Laurel Creek.....	99.99	200.00
Liberty.....	67.59	.00
Ole Bethel.....	.00	104.00
Pistole.....	66.42	333.25
Pleasant Hill.....	30.00	.00
Quebeck.....	203.71	.00
Sparta, First.....	1,862.50	5,385.07
Spencer, First.....	257.28	230.51
Total.....	5,588.30	9,648.15

## WATAUGA

## Associational Chairman: Ray Sorrell

Antioch.....	.00	.00
Bakers Gap.....	67.28	60.00
Beck Mountain.....	440.41	.00
Bethany.....	327.00	535.00
Bethel.....	198.00	337.00
Big Spring.....	609.02	813.49
Bilmore.....	1,565.76	1,247.72
Butler.....	301.81	428.08
Caldwell Springs.....	.00	.00
Calvary.....	2,223.79	2,711.93
Cedar Grove.....	2,021.20	1,258.78
Cobbs Creek.....	183.14	525.00
Doe River.....	727.70	839.23
Dungan Chapel.....	1,030.49	448.69
East Side.....	525.00	.00
Elizabethon, First.....	4,364.00	6,546.11
Elk River.....	184.26	.00
Fairview.....	1,060.00	560.00
Grace.....	3,813.32	.00
Hampton, First.....	1,465.85	1,168.16
Happy Valley.....	447.00	27.00
Harmony.....	375.00	4.61
High Point.....	.00	.00
Hunter, First.....	.00	.00
Hunter Memorial.....	201.20	232.57
Immanuel.....	5,552.06	2,857.09
Little Doe.....	973.89	479.92
Little Milligan.....	487.02	270.20
Little Mountain.....	246.95	38.00
Lynn Valley.....	338.03	649.74
Meadow View.....	.00	150.00
Mountain City, First.....	2,426.46	1,051.00
Nelsons Chapel.....	566.47	125.46
North Side.....	228.60	25.00
Oak Street.....	1,444.03	1,835.20
Pine Grove.....	.00	.00
Pleasant Grove.....	1,643.92	1,930.91
Pleasant Home.....	.00	.00
Poplar Grove.....	102.80	359.83
Powder Branch.....	44.84	515.00
Rittertown.....	1,325.87	574.25
Riverview.....	195.64	93.17
Roan Creek.....	150.00	50.00
Roan Mountain, First.....	449.31	345.00
Roan Park.....	321.50	.00
Rock Springs.....	202.96	100.00
Shady Valley.....	.00	100.00
Siam.....	2,742.44	2,886.00
Sink Valley.....	.00	500.00
Sinking Creek.....	1,431.00	1,200.00
State Line.....	688.23	1,000.00
Stoney Creek.....	937.00	211.00

Church	Cooperative Program	Designated
Sugar Grove.....	.00	1,079.68
Unaka.....	1,564.77	2,752.05
Unaka.....	1,077.92	397.35
Watauga, First.....	352.43	305.00
Willow Springs.....	.00	62.50
Zion.....	421.12	313.51
Total.....	48,056.49	40,000.23

## WEEKLEY COUNTY

## Associational Chairman:

Adams Chapel.....	910.00	945.00
Beech Springs.....	40.00	189.00
Bethel.....	6,257.00	2,350.00
Bethlehem.....	.00	236.31
Bible Union.....	40.00	200.00
Calvary.....	449.50	124.70
Central.....	3,879.00	3,187.97
Corinth.....	250.00	250.00
Davis Memorial.....	.00	.00
Dresden, First.....	970.84	537.10
Eastside.....	.00	200.00
Fellowship.....	98.64	685.24
Gearins Chapel.....	180.00	249.17
Gleason, First.....	894.79	1,783.51
Greenfield, First.....	500.00	1,809.47
Hodges Chapel.....	40.20	.00
Jolley Springs.....	383.21	35.00
Liberty.....	.00	.00
Long Heights.....	.00	.00
Macks Grove.....	500.00	614.27
Moore's Chapel.....	.00	57.00
New Hope.....	200.00	357.05
New Prospect.....	179.53	100.00
New Salem.....	223.12	100.15
Northwestern.....	547.81	269.00
Oak Grove No. 1.....	150.00	200.00
Oak Grove No. 2.....	.00	169.15
Old Bethel.....	163.17	157.00
Palmer'sville.....	424.51	265.94
Pleasant Grove.....	.00	538.17
Pleasant View.....	.00	.00
Public Wells.....	.00	199.80
Ralston.....	661.74	316.50
Rutledge.....	15.00	.00
Sand Hill.....	.00	121.72
Sharon, First.....	1,020.00	925.60
Sidonia.....	75.00	172.00
Southside.....	3,347.53	1,620.70
Thompson Creek.....	100.00	200.00
Tumbling Creek.....	346.16	176.15
Union Grove.....	15.00	100.00
West Union.....	195.00	196.00
Association.....	.00	373.42
Total.....	23,056.75	20,012.09

## WESTERN DISTRICT

## Associational Chairman:

Bethlehem.....	365.00	266.20
Big Sandy, First.....	1,166.66	884.27
Birds Creek.....	340.96	242.68
Buchanan.....	189.89	.00
Central Point.....	230.00	.00
Cottage Grove.....	364.43	872.49
Fairview.....	3,366.90	1,420.20
Friendship.....	398.46	144.00
Henry.....	150.00	115.00
Jones Chapel.....	360.00	375.50
Manfield.....	259.13	125.00
Maplewood.....	3,453.00	2,045.00
McDavids Grove.....	157.50	.00
Mount Sinai.....	47.18	59.22
New Bethel.....	22.50	.00
New Harmony.....	1,086.68	685.00
New Hope.....	.00	200.00
North Fork.....	512.01	213.00
Oak Hill.....	.00	.00
Paris, First.....	23,211.43	10,132.20
Point Pleasant.....	1,251.69	1,755.52
Puryear.....	2,100.00	438.00
Ramble Creek.....	70.00	200.00
Shady Grove.....	90.00	.00
Spring Creek.....	100.00	.00
Spring Hill.....	566.55	619.75
Springville.....	405.00	125.00
Temple.....	871.44	.00
Union Friendship.....	726.25	1,176.00
West Paris.....	5,893.16	739.43
Total.....	47,755.82	22,833.91

## WILLIAM CAREY

## Associational Chairman: Dwight Bledsoe

Bragan Avenue.....	103.20	176.00
Calvary.....	15.00	.00

If your church is planning to build, remodel, refinance or needs money for any purpose, I would welcome the opportunity of serving you. Feel free to contact me at any time for information and counsel, without obligation, for any of your financing needs.

Roy M. Cotton  
President

AMERICAN SECURITY  
CHURCH FINANCE, INC.

P. O. Box 9555  
Birmingham, Alabama 35215

CALL TOLL FREE 1-800-633-8436

Church	Cooperative Program	Designated
Cash Point.....	674.00	1,167.17
Donaldson Grove.....	330.78	90.00
Elora, First.....	30.00	153.00
Foyetteville, First.....	5,114.49	668.25
Flinville, First.....	1,355.57	2,950.70
Hickory Grove.....	52.47	.00
Hilldale.....	.00	55.11
Howell, First.....	.00	.00
Howell Hill.....	40.00	.00
Kelley's Creek.....	178.51	.00
Kirkland.....	222.37	54.05
Lexie Cross Road.....	247.72	.00
Lincoln.....	575.54	9.79
Macedonia.....	424.16	183.45
Molina.....	.00	11.00
Mulberry.....	15.00	.00
New Grove.....	45.00	20.00
New Hope.....	.00	.00
Oak Grove.....	64.61	225.38
Oak Hill.....	.00	.00
Parks City.....	1,033.65	1,184.89
Petersburg, First.....	287.62	161.42
Pleasant Grove.....	30.00	183.70
Pleasant Hill.....	403.70	.00
Pleasant Ridge.....	124.09	62.04
Prospect.....	390.00	381.02
Stewarts Chapel.....	68.76	132.01
Taft, First.....	70.95	222.24
West End.....	927.56	271.71
Total.....	12,817.75	8,362.94

## WILSON COUNTY

## Associational Chairman: Donald Owens

Alexandria, First.....	1,166.15	4,599.38
Barons Creek.....	864.40	2,421.25
Bellwood.....	164.87	202.47
Calvary.....	877.67	212.00
Cedar Creek.....	417.85	815.00
Cedar Grove.....	.00	.00
Chandler.....	70.63	27.00
Fairview.....	3,431.43	4,850.60
Fall Creek.....	2,081.14	3,020.69
Gladeville.....	2,164.45	875.00

Church	Cooperative Program	Designated
Greenville.....	85.00	.00
Hillcrest.....	1,929.65	633.01
Hurricane.....	367.10	844.35
Immanuel.....	6,256.34	5,880.09
La Guardia.....	1,494.00	.00
Lebanon, First.....	11,589.26	7,297.73
Linwood.....	136.00	33.25
Macedonia.....	370.65	820.00
Martha.....	96.12	200.00
Mount Juliet.....	6,249.99	9,278.95
Mount Olivet.....	614.85	162.00
Ramah.....	102.53	.00
Rocky Valley.....	882.00	707.00
Round Lick.....	1,800.00	1,528.00
Saulsberry.....	384.81	51.30
Silver Springs.....	450.00	939.00
Smith Fork.....	1,211.19	.00
Southside.....	313.75	176.00
Trinity.....	742.21	.00
Vine.....	30.08	215.36
Watertown, First.....	1,068.05	864.00
Total.....	47,412.17	46,653.43

## OTHER CHURCHES

Big Creek Gap.....	.00	50.00
Blessed Hope.....	75.26	366.00
Cumberland View.....	.00	40.00
Deily.....	12.72	92.29
Dockery Heights.....	.00	84.00
Fratersville.....	.00	100.00
Grantsboro.....	.00	271.92
Hawkinsville.....	.00	100.00
Kirby Woods.....	1,500.00	2,728.64
Liberty.....	695.76	160.00
Pleasant Grove.....	.00	130.00
Savannah, Second.....	370.00	46.00
Trinity.....	210.07	165.00
Unity.....	.00	105.00
Vanderbilt Ave.....	1,183.95	1,213.21
West Hills.....	25.00	.00
Woodland.....	10.00	.00
Total.....	4,082.76	5,652.06

# HELP US WITNESS TO THE WORLD!

BUY YOUR TICKETS TO THE 1982 WORLD'S FAIR  
THROUGH BAPTIST MINISTRIES.

You can help us reach millions with the Christian message by ordering your tickets to the World's Fair in Knoxville now! Part of the purchase price of every ticket we sell goes toward the completion of the Baptist Pavilion on the Fair site.

But hurry! Your money is needed now to finish this important work and finance the special musical and multimedia presentations which are sure to touch the lives of

millions—and powerfully illustrate the world's spiritual energy.

Season Pass prices will also increase when the Fair opens May 1. Save \$15 off the normal adult admission price by ordering now!

✓ Purchase Season Passes for your family—so you can go back again and again!

✓ Buy tickets for use as business gifts.

✓ Ideal for birthdays, too.

Yes, I want to order my 1982 World's Fair tickets through Baptist Ministries and support our Christian witness at the Fair.

Adult Season Pass(es) @ \$70 each = \$ \_\_\_\_\_  
 Child Season Pass(es) @ \$45 each = \$ \_\_\_\_\_  
 (Age 4-11. Children 3 and under free.)  
 2-Consecutive Day Ticket(s) @ \$15.95 each = \$ \_\_\_\_\_  
 (Age four and above)  
 1-Day Adult Ticket(s) @ \$9.95 each = \$ \_\_\_\_\_  
 1-Day Child Ticket(s) @ \$8.25 each = \$ \_\_\_\_\_  
 (Age 4-11)  
 1-Day Senior Ticket(s) @ \$9.25 each = \$ \_\_\_\_\_  
 (Age 65 and over)  
 Total (tax is included) \$ \_\_\_\_\_  
 Check or money order enclosed (payable to Baptist Ministries). No cash please.

## Mail tickets to:

Name \_\_\_\_\_  
 Street Address \_\_\_\_\_ Apt. # \_\_\_\_\_  
 City \_\_\_\_\_ State \_\_\_\_\_ Zip \_\_\_\_\_

Send to: Baptist Ministries for The 1982 World's Fair  
 P.O. Box 1086, Knoxville, Tennessee 37901  
 For additional information call: (615) 688-5377

Upon purchase of a Season Pass, you will receive a Season Pass Certificate which may be exchanged at a designated photo location for your permanent 1982 World's Fair Season Pass. (All passes are non-transferable.) A Season Pass is good for unlimited visits to The 1982 World's Fair, including anytime, any day admission. (There will be a separate charge for individual amusement rides.) All prices, policies and programs are subject to change without notice.

© K.I.E.E.

## CHURCH FURNITURE

At a price  
Any Church Can Afford  
Write or call

WAGONER BROS.  
MFG. CO.

Tel. (501) 675-2468  
Booneville, Arkansas  
72027



# WMU president views challenge of cities

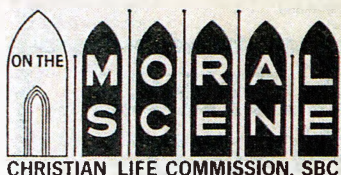
By Dorothy Sample

**BIRMINGHAM, Ala.** — The graffiti scrawled across the dilapidated building riveted my attention. "This is the last hope," it read.

The surrounding rubble and gutted high-rise tenements did not offer much hope. But the home missionary at my side did.

The scene before me was New York City's South Bronx, an area laid waste by human destructiveness. Several years ago, frustrated landlords, tenants, and vandals set fire to block after block of slum housing. The remaining devastation has become a national symbol of all the ills that afflict our cities — brutality, the wretchedness, the human misery.

I had come to the South Bronx at the invitation of the Home Mission Board. On my first official missions tour since my election to the national presidency of Woman's Missionary Union, I was to visit Baptist work in several major American cities. On this tour, I saw firsthand what other Baptists are learning as they study Challenge of the Cities during the annual home missions emphasis.



**RACIAL RECONCILIATION** — "Orrin Morris, Home Mission Board research division director, predicts another period of white flight in the mid 1980s, and probably a second in the 1990s. 'Baptists will totally lose the cities if we don't become sensitive to social and racial trends revealed in 1980 census data,' Morris says. 'There is little hope for Baptist church growth in southern cities apart from aggressively starting new churches among blacks, Hispanics, and other ethnics.' ... Today the church has 'a heightened responsibility for being an agent of reconciliation,' Emmanuel McCall, director of black church relations for the Home Mission Board, insists. Current economic conditions, he adds, 'may force Baptists to do what we should have done all along instead of looking for an escape from the realities before us.' McCall believes now is the optimum time for the church to be a launching pad for racial reconciliation." (MISSIONS USA, Jan./Feb. 1982)

**ETHICS TRAINING NEEDED** — "Chief Justice Warren E. Burger says the ethical standards of new lawyers are not as low as the public may think, but law schools nevertheless are turning out graduates who are more 'a menace to society and a liability' than an asset. Burger made the statements in an article for the quarterly Cleveland State Law Review, calling for more emphasis on ethics training. 'Some observers argue that character and moral sense are largely molded by the time students get to law school. But we know full well that the law school is an immensely powerful force in defining, structuring, and internalizing professional norms, values, and attitudes,' Burger said. He emphasized that 'at a minimum,' ethics courses should receive as much emphasis as constitutional law courses. Burger cited a 1977 American Association of Law Schools survey that said one-third of the nation's legal training grounds require just one credit-hour of ethics instruction." (NASHVILLE BANNER, 1/9/82)

I found despair and decay in the South Bronx as well as the other cities I visited. But I also found hope. I saw hope in the healing presence of Southern Baptists who live, minister, and witness in the name of Jesus.

One of these healers is Sam Simpson, pastor of Bronx Baptist Church. "The love of Christ constrains me to be here," is the way he explains his presence.

Sam practices what he calls "sweat evangelism." He is using hammer, saw, and nails to demonstrate Jesus' love among people in this burned-out area. Sam is part of an interdenominational team with which Southern Baptists voluntarily assist. Called shepherds of the Bronx, its aim is to rebuild some of the damaged apartment buildings.

When a building reopens, Baptists move in to minister and introduce Bible study. At times the work crawls with agonizing slowness. But the results are measured not just in restored buildings, but in lives which have been restored through Jesus Christ.

Some big city despair is not poverty, but in high position. At the United Nations, enjoying lunch in the elegant dining room, I saw a vast mission field. Here in the harvest was our missionary, Elias Golonka. He moves freely through the United Nations complex, speaking many languages, and ministers to their inner turmoil. This Baptist missionary at the UN is an ambassador of hope.

Jim Queen is another healer. He lives in Chicago, where he is pastor of Uptown Baptist Church.

East meets West at Uptown each week when five language groups come together to worship. They are united in this one church where members speak Vietnamese, Cambodian, Hmong, English, and Spanish.

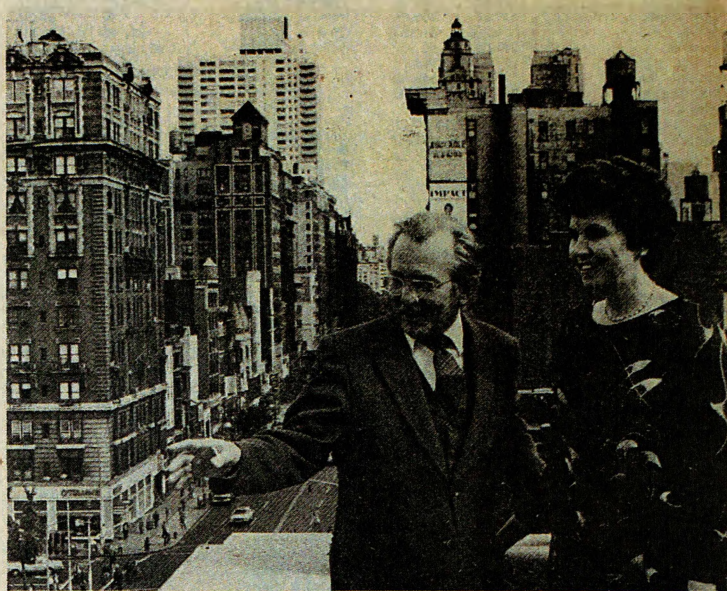
Uptown accurately reflects the world-character of our nation's second-largest city. Every major ethnic group is now represented here.

As I watched members engaged in a Bible study, I also thought of this year's theme for the Week of Prayer for Home Missions — "The World Is Here." The world has indeed come to Chicago, and to Christ through the witness of Jim Queen and Uptown Baptist Church.

I found a fourth healer in Washington, D.C. His name is Bill Rountree, director of the Johnenning Baptist Center.

Bill and his staff are committed to witness through ministry as they meet almost every human need imaginable. "Our policy really is to love our neighbor," Bill told me. I like that.

I believe that reaching America's cities for Christ is the most awesome task that we as Southern Baptists face in the last two decades of this century.



**VIEWING NEW YORK** — Quinn Pugh, director of the Metropolitan New York Baptist Association, shows a portion of New York City as seen from atop the association's building to Dorothy Sample, national WMU president.

If this is going to be accomplished, there must be some drastic changes in the way we are going about it.

There must be more personal involvement on our part. Jim Queen told me that he makes door-to-door visits each week in the neighborhood of Uptown Baptist Church. But 128,000 people live in a 10-block-square area that surrounds it. How many Jim Queens will it take to reach all of Chicago's 3-million residents?

We will have to give more financial support to missions through the Cooperative Program and the Annie Armstrong Easter Offering for Home Missions.

This year's Easter offering goal is \$22-million. But how far will that go to reach the missions in our cities?

We will have to abandon our rural mindsets. As I walked down city streets engulfed by people, buildings, and traffic, I became aware of the enormous complexity of our cities. To reach these people, we will have to try new approaches to witness and ministry — things we have never attempted in small towns or in rural areas.

Once again the graffiti message returns to haunt me. "This is the last hope."

—Dorothy Sample of Flint, Mich., is the national president of Woman's Missionary Union.

## IRS to examine church's records

**WASHINGTON (BP)** — A Sherman, Tex., bank must produce its records of that city's First Pentecostal Church as ordered by a federal appeals court, following the U.S. Supreme Court's refusal to review the case.

The Grayson County State Bank has refused for more than three years to produce the records as demanded by the Internal Revenue Service in an audit proceeding directed at the congregation's pastor, Charles E. Glass. IRS is looking into Glass's tax liability for 1973 through 1976.

Although IRS obtained a summons to examine the records in November 1978, the taxing agency waited until May 1980 to ask a federal district court in Texas to enforce it. That court denied the government's request, but the Fifth Circuit Court of Appeals reversed the lower court, ordering the bank to comply with the IRS request.

In appealing that decision to the Supreme Court, attorneys for the church labelled the IRS efforts as "clearly an excessive and unnecessary interference" into "internal financial matters." They also cited a portion of the Internal Revenue Code forbidding the IRS from auditing the "books of account" of any congregation, even if it engaged in unrelated business enterprises.

But the government argued that it sought only bank records and not "books of account" kept by the church. It emphasized also that its investigation focused on the pastor — not the congregation. The summons of bank records was issued, the government brief continued, "for the proper and strictly secular" purpose of determining Glass' tax liability.

## Paralyzed volunteer finds ministry

**RICHMOND, Va. (BP)** — Paralyzed mission volunteer Roy Church told a committee of Southern Baptist Foreign Mission Board members, via a special telephone hookup, he has discovered a rich mission field during two months of hospitalization.

Church, speaking from his room at North Carolina Baptist Hospital in Winston-Salem, told western South America committee members, meeting Feb. 8 in Richmond, Va., he is "feeling very good" and sharing Christ at every opportunity.

Four hospital employees who have accepted Christ at Church's invitation gather in his room when they get off work at 11 p.m. for Bible study — five nights a week, he said.

Church assured board members he is slowly recovering from the paralysis he sustained when stricken by Guillain-Barre Syndrome in December while working as an extended service volunteer in Quito, Ecuador. He has gained strength in the muscles of his torso and continues to regain movement in his fingers, hands, and toes.

"My desire is to be able — to the glory of God — to walk into Calvary Baptist Church, Winston-Salem (where he and his wife, Ruth, are members), without crutches or a cane on Easter Sunday," he said.

**BAPTIST  
AND  
REFLECTOR  
brings you  
news first.**