

Baptist & Reflector

Stewide Edition

Telling the Story of Tennessee Baptists

Vol. 172 / No. 22; June 14, 2006

Kempers to return to international missions work

By Connie Davis Bushey
Baptist and Reflector

BRENTON — Mike Kemper is making some dramatic changes in his life.

He is trying to learn Spanish although he joked, "I had a hard enough time with English." He also speaks and reads Romanian. He and his wife, Kathy, served as Southern Baptist missionaries in Romania.

The couple have sold their house and are giving a lot of things away and selling other

belongings. Taking only suitcases, they will move to Costa Rica in October where they initially will live with a Costa Rican family to immerse themselves in the Spanish language.

Kemper, director of missions, Gibson County Baptist Association based here, is looking forward to the new challenges though he is sad to leave his family and friends in Tennessee, where he has served for seven years.

Though 56, Kemper is looking forward to "reassignment" rather than "retirement," he

says. This is possible mostly because of the good health God has given the couple and God's

calling, he explained.

The Kempers will work in church planting and evangelism in rural areas of Costa Rica. They will live in the capital city of San Jose, which has about one million residents.

Local international missions

Kemper wants to assure Tennesseans that he is not going to a better missions field.

"What we do over there is not more important than what we do here. It is all equally important."

He learned that very valuable lesson, said Kemper, when he and Kathy left Romania after six years. Because they didn't leave to respond to a particular crisis, people asked them why they would leave such an important and needy area of missions work as the new Europe, which then included countries rejecting Communism after the fall of the Soviet Union.

"Missions is just as important in Gibson County as it is in Romania," said Kemper.

The key to missions strategy, he explained, is to follow Acts 1:8. It directs Christians to do missions locally, regionally, and internationally. Finally, the verse directs Christians to



MIKE KEMPER, director of missions, Gibson County Baptist Association, based in Trenton, sits in his office in the association's office building.

do it all at the same time, said Kemper.

"If we wait until we get it done here we'll never go."

He also has come to another conclusion from his missions journey. He referred to holding Romanian orphans in his arms and singing to them, trying to help street children in Bucharest who lived in sewers, learning of the struggles of gypsies in Romania, and seeing malnourished children in Africa.

Americans have so much more than most people in the world, said Kemper. Does that mean that God loves us more?

No, he assured. But because Americans have been given much, "much is required," he said, referring to Scripture.

"God 'has blessed America and blessed us for the purpose of touching the world,'" stated Kemper.

Proud of association

One reason he came back to Tennessee from Romania and is at peace with leaving again is what he has seen the association accomplish, said Kemper, and what he believes they will continue to accomplish.

The first year he was DOM he led five teams of volunteers to serve in Romania.

He saw associational leaders catch a vision for missions work through strategy planning.

The association has sent a total of 40 teams to Romania in six years. Other partnerships have been with Native Americans in Nebraska; Central Baptist Association, Michigan; and Oaxaca, Mexico.

Just last year the association sent four teams to Romania, three teams to Michigan, three teams to Mexico, and one to Nebraska.

The association also began to work with the North American Mission Board and Tennessee Baptist Convention to help lead the Mississippi River Ministry of Southern Baptists. Randy Pool was added to the association staff to lead it.

The association helped start Christian Women's Job Corps and a crisis pregnancy center. It developed a block party trailer and disaster relief chain saw trailer.

Since last fall volunteers from Gibson County Association have joined eight teams serving Gulf Coast hurricane victims. Association volunteers also served local residents in April, when eight people were injured by a tornado. — See Kemper, page 4



VBS underway in Tennessee churches

Pastor Jerry Jones of Hillhurst Baptist Church, Nashville, stands with the display his congregation developed for the "Arctic Edge" Vacation Bible School theme. Hillhurst is one of hundreds of Tennessee Baptist churches which are holding VBS this summer. Vacation Bible School traditionally is one of the best evangelistic tools churches use in reaching children and youth with the gospel of Jesus Christ.

Commentary

TBC web site enables paper to deliver late-breaking news stories

By Lonnie Wilkey, editor
Baptist and Reflector

BRENTWOOD — Being a weekly newspaper can have its limitations when it comes to getting out the latest news quickly.

The Internet, however, has provided an alternative when a story needs to be told before the next issue rolls around.

That was especially evident last week. The Baptist and Reflector goes to press on Mondays around 5 p.m. Before we sent the paper to the press on Monday, June 5, we heard through the grapevine that Nashville pastor Jerry Sutton might become a candidate for the presidency of the Southern Baptist Convention. It was too late to get it confirmed, so we could not write a story.

Sutton announced his candidacy the next day through Baptist Press. Even though our print edition was "in the mail," we were still able to distribute the story on the Tennessee Baptist Convention web site at www.tnbaptist.org.

While we have advocated web site as a

source for late-breaking news, we have not fully utilized it. We hope to do more updates in the future when the need arises.

In addition to the Sutton story last week, we also ran a story informing messengers planning to attend the SBC annual meeting in Greensboro, N.C., of road work through the mountains in North Carolina that would detour messengers traveling on Interstate 40.

This week, much of the news that happens at the SBC will occur after our print deadline. Next week's issue will contain extensive coverage, but we encourage our readers to check our web site. We will post a story on the SBC election on June 14 and possibly other stories as needed.

We want and need Tennessee Baptists who will subscribe to our print edition because it helps "pay the bills." We are grateful, however, to have an alternative to get the news out in a more timely fashion.

Visit the TBC web site and discover all that it has to offer in addition to the Baptist and Reflector. □

about your newsjournal

Subscribe to the *Baptist and Reflector* for one year and receive 47 copies. Individual subscriptions, \$11; Church Leadership Plan, \$8.75 per subscription; other plans available

Lonnie Wilkey, editor
(615) 371-2046,
lwilkey@tnbaptist.org

Connie Davis Bushey, news editor
(615) 371-7928,
cbushey@tnbaptist.org

Susie Edwards, circulation/ executive assistant/ advertising
(615) 371-2003,
sedwards@tnbaptist.org

Mary Nimmo, church pages/ administrative assistant
(615) 371-7929,
mnimmo@tnbaptist.org

Marcia Knox, special features assistant
(615) 371-2089,
mknox@tnbaptist.org

Office — Baptist and Reflector,
5001 Maryland Way, Brentwood, TN 37027

Mailing address — P.O. Box
728, Brentwood, TN 37024

Phone — (615) 371-2003

FAX — (615) 371-2080

Web Site — www.tnbaptist.org

Publisher — Tennessee Baptist Convention Executive Board

Shared Ministries Committee —

Wendell Boertje chairman; Tonda Strong, vice chairman; Donna Cardwell, Marty Comer, Orvind Dangeau, Mary Beth Duke, Tim Frank, David Green, Nancy Hammons, George Hollander, Doug Jennings, Tommy Lemmonds, Ed Porter, Kenneth Sparkman, Mildred Thompson, Larry Triplett, Wes Turner

Postmaster —

Periodical postage paid at Brentwood and at additional mailing office. (USPS 041-780) POSTMASTER: Send address changes to *Baptist and Reflector*, P.O. Box 728, Brentwood, TN 37024.

Frequency of issue —

Published weekly except for the weeks of Christmas, New Year's, Memorial Day, Fourth of July, and Labor Day.



Printed on
recycled paper

Roy Fish named interim president at NAMB

Baptist Press

ALPHARETTA, Ga. — Trustees of the Southern Baptist North American Mission Board have called seminary evangelism professor Roy J. Fish to serve as the agency's interim president.

Fish has accepted the call and will begin his part-time responsibilities next week at the Southern Baptist Convention annual meeting.

Fish serves as distinguished professor of evangelism at Southwestern Baptist Theological Seminary in Fort Worth, Texas, where he has taught evangelism for more than 41 years.

Approval to call Fish came during a special trustee meeting by telephone June 8. The vote was unanimous.

Board chairman Bill Curtis told trustees there are several reasons he has "confidence in Dr. Fish's ability to faithfully serve NAMB and Southern Baptists during this season of transition."

"Roy Fish has served as interim pastor of some of our most historic churches and brings a wealth of experience to this position," Curtis, pastor of Cornerstone Baptist Church in Florence, S.C., wrote in a message to fellow trustees.

"Dr. Fish also has the ability to connect relationally with people in times of change and will be able to minister to both our NAMB staff and state partners. ... And, Roy Fish is synonymous with evangelism — the key ministry focus of NAMB. He will be effective in leading us back to the place where evangelism is at the forefront of all we do." □

Tennessee court hears arguments on amendment

Baptist Press

ALPHARETTA, Ga. — The Tennessee Supreme Court heard oral arguments June 7 in a lawsuit that could keep that state's proposed constitutional marriage amendment off the ballot in November.

At issue is whether the state legislature — which placed the amendment on the ballot — published the text of the amendment in time as required by the state constitution. Constitutional amendments in Tennessee must pass the legislature in two consecutive sessions. According to the state constitution, an amendment, after passing the first time, must "be published six months" prior to the election of the next legislature. The Amer-

Welch reflects on his SBC presidency

Baptist Press

GREENSBORO, N.C. — Admitting the Southern Baptist Convention will never be without struggles, Bobby Welch pledged to "give the best of the rest" of his life to urging and encouraging Southern Baptists to focus on evangelism.

"I have considered all other options and there is nothing in existence today — all of us will die and our children will die, before we will ever again see any organization or organism [such] as the SBC with its potential to change the world," Welch said. "There is nothing to compare with it."

Insisting he was not bragging, Welch said he is humble and appreciative of what God has done with the SBC.

But Baptists' best efforts are yet needed so that "not only have we reclaimed the inerrancy of the Scripture, but that we reclaimed the Great Commission of that inerrant Scripture," Welch said in a wide-ranging interview with the *Florida Baptist Witness* in late April.

Welch, 63, announced his retirement May 28 from the pastorate of First Baptist Church in Daytona Beach, Fla., effective Aug. 27 when he'll assume the role of pastor emeritus.

In reflecting on his service as SBC president at this juncture in the convention's history, Welch said it was "God arranging things for such a time as this," citing the Annual Church Profile report which says the number of Southern Baptists

churches declined by 11 percent between 2004 and 2005 and circumstances at the North American Mission Board prompted a change in its leadership.

"It's no wonder that I think God was preparing to sort of try and bridge the gap and fill in the blank during these struggling times," Welch said of his leadership and emphasis on evangelism.

Providing practical advice for how Southern Baptists should approach problems and differences of opinion, Welch said "this convention must learn to play hurt ... [and] fight wounded."

"We must become specialists at solving our problems while at the same time moving toward our objective," Welch said. "We have fallen into the trap too often where ... we all shut down everything and run to the problem and obsess on the problems ... We have to learn to stay on the high ground and solve our problems as we move along."

Responding to questions about the role of the SBC president in helping the SBC boards and entities work through their various challenges, Welch said any president would be "duty bound" to look out for the best interests of the convention, but going beyond praying for those involved and being available

for questions and conversation might be considered intrusive.

Welch responded to questions of his view of the new International Mission Board guidelines on baptism approved by trustees during his tenure.

"We have the trustee approach to operations in place and we have to trust that and let them work," said Welch, adding he expects messengers will discuss the situation at the SBC meeting.

Drawing on the issue of evangelism, Welch said he admits to having been single minded about the issue during his two years as president.

"I plead guilty," he quipped. "There are a number of other issues and I've not been unaware of those and I have tagged base on a number of things along the way, but have, in every one of them always drawn a straight bright line to reaching people. I carried thousands of hundred dollar bills to the Gulf Coast and gave them out, but I never gave any of them out that didn't connect them with the gospel."

"I tried to be that focused and consistent with everything I did this year, because I operate under the absolute conviction that we do not have one problem as a convention or church that soul-winning will not solve. Not one," Welch continued.

"So anything I talk about I am involved with — some where along the line, there gonna be a line connected that and evangelism." □

seven, passed its amendment June 6. □

Ala. voters pass m. amendment

Baptist Press

MONTGOMERY, Ala. — Perhaps demonstrating that the protection of the definition of marriage should not be a partisan issue, 81 percent of Alabama voters June 6 approved a state constitutional marriage amendment — an amendment that was placed on the ballot by the legislature and sponsored by two Democrats.

The amendment won handily in every county, making Alabama the 20th state to adopt a constitutional marriage amendment. Those 20 amendments have been adopted with an average of 71 percent of the vote.

Only Mississippi — which passed an amendment in 2004 with 86 percent of the vote — surpassed Alabama's tally.

"This cultural issue tran-

sceded mere partisan politics," Michael Ciamarra, president of the pro-far Alabama Policy Institute, Baptist Press. "This truly an issue of our shared community values."

"That [81 percent] is by measure an astounding victory ... The people of Alabama spoke very, very loudly."

The legislature passed amendment last year, although it required voter approval. It breezed through the Senate 30-0, and the House, 85-0, was sponsored by two Democrats, state Rep. Yusuf Salim and state Sen. Hi Mitchem.

The amendment prevents Alabama courts from forcing the state to recognize "gay marriages," civil unions, or domestic partnerships from other states. It also prevents Alabama courts from legalizing unions in the state. "Gay marriage" is legal in Massachusetts, while same-sex unions are recognized in Connecticut and Vermont. California has same-sex domestic partnerships. □

Retiring after 50 years of ministry

Gallatin FBC secretary has been 'blessed beyond measure'

By Bonnie Wilkey
Baptist and Reflector

GALLATIN — Though she is not even a member of First Baptist Church here, a person would be hard pressed to find someone more loved and appreciated than Jan Stephens.

"She knows everyone," says Pastor Larry Yarborough of the church who has served at First Baptist Church for 50 years.

Though he has been pastor for only eight months, Yarborough recognized quickly what an asset she was to his ministry and to those who served with him.

All the pastors she has served with think the world of her, he said.

Stephens' last day in the office was June 8. And on Sunday, June 11, the church recognized her for her 50-year ministry.

Gallatin Mayor Don Wright presented her with "Keys to the City" and proclaimed June 11 "Jan Stephens Day" in Gallatin. State representative Mike McDonald presented Stephens with an official proclamation from the Tennessee State Legislature.

In addition, church members presented her and her husband, Charles, with an expenses-paid trip to Pennsylvania. She also was given a flat-screen television and a wood stand, and a laptop computer so she can stay in touch with younger family members through e-mail.

Former FBC pastors Harold and Jim Fitch spoke during the tribute service and letters of congratulation were read from James Porch, executive director of the Tennessee Baptist Convention; Morris Homan, president of the



JAN STEPHENS gets some last minute instructions from Larry Yarborough, pastor of First Baptist Church, Gallatin, on her final day in the office. Stephens is retiring after serving the Gallatin congregation for 50 years as church secretary.

Southern Baptist Convention Executive Committee; and Thom Rainer, president of LifeWay Christian Resources.

Stephens is embarrassed by all the attention she has received regarding her retirement. Everyone has made "me feel so special," she said. Stephens, however, wants to make sure God gets all the glory and not her.

"I give the Lord the credit for everything," she said with all sincerity.

Not bad for someone who accepted the position in 1956 on a "three-month" trial basis and a salary of \$40 a week.

Stephens is convinced God opened the door for her to minister at First Baptist Church.

She was serving as a secretary with the Sumner County Extension Office when a member of First Baptist Church came into the office. During the course of their conversation he mentioned First Baptist was looking for a secretary

and asked if she would be interested.

Stephens said she would and she was eventually hired as the church's only secretary under then pastor Jim Craine.

Since then she has served with five other pastors (Allen, Fitch, Yarborough, Phil Cooley, and Mark Drake).

All were "wonderful, good people" who were interested in "winning the lost and serving the Lord," she recalled, adding that she felt each minister had a specific reason for being at the church during the time they served.

Stephens served as the church's only secretary for 17 years before additional secretaries were employed. Until 1991 Stephens served a dual role as financial and pastor's secretary. They decided the two positions needed to be split. Stephens was given a choice and chose to serve as the pastor's secretary.

She kept up with the times as she progressed from her



DURING THE JUNE 11 morning worship service at First Baptist Church, Gallatin, Jan Stephens was given a proclamation from the Tennessee State Legislature, Senate, and office of the governor by Mike McDonald, right, state representative. Standing with Stephens is husband, Charles.

original Royal manual typewriter to an electric version, and finally the computer age.

She noted methods changed over the years which made the work easier, but it did not change the nature of her task.

"I was here to be a help to the ministry and to the pastor. In that sense, the job never changed," she said.

Throughout the years she always viewed her work as a ministry. "I have never been an 8 a.m.-4 p.m. secretary," she said.

Stephens witnessed years when the church prospered, particularly in the late 1950s and early 1960s when the Tennessee Valley Authority brought a lot of new growth into the area. She also witnessed some lean years and that is what has impressed her most about First Baptist and its members.

"The church has withstood the good times and the bad times. It has done well with its

ministry," she said.

She is excited about the future of the church. "Right now it is in better shape than it has been in a long, long time," she observed.

Stephens is grateful for the opportunities she had to minister and be a part of her "second" church family. Over the years she maintained her membership at Hollis Chapel Baptist Church, Portland.

"I've been blessed beyond measure," Stephens said, noting she developed many close friendships with FBC members.

She has no real plans for her retirement years, other than to spend more time with her husband, two children (Glenda and Robert), and three grandchildren.

Stephens will look to the future with the same philosophy that brought her from the past to present day. "I've depended on the Lord all of my life." □

Amendment to protect marriage fails once again in U.S. Senate

Baptist Press

WASHINGTON — The United States Senate rejected an attempt to amend the Constitution to protect marriage, with supporters winning only one vote in the 100-member body.

After two full days of debate, Senators voted 49-48 in a procedural move to bring the Marriage Protection Amendment (MPA) to the floor for a up-or-down vote. The amendment, known as "invoking cloture," required 60 votes to pass, however. If the amendment had reached the floor, it would have needed 67 votes to pass by a two-thirds majority, to

Both Tennessee senators (Lamar Alexander and Bill Frist) voted for the amendment.

In July 2004, 48 senators supported ending debate and holding a vote on the proposal. Fifty senators voted against "invoking cloture." The addition of only one vote came despite the Republican Party's gain of four Senate seats in the 2004 election.

The MPA, S.J. Res. 1, would define marriage as the union of a man and a woman in an attempt to protect the institution against continuing legal efforts to legalize "gay marriage."

So far, Massachusetts is the only state to have legalized "gay marriage," but amend-

ment supporters predict courts will continue to expand marriage to include homosexual couples unless a federal amendment is ratified to address the problem. High courts in New Jersey, New York, and Washington appear poised to legitimize same-sex unions before the end of the year.

Despite the Senate setback, the House of Representatives intends to vote on the proposal in July, Majority Leader John Boehner, R-Ohio, told reporters.

"This is an issue that is of significant importance to many Americans," Boehner said, according to *The Washington Post*.

"We have significant num-

bers of our members who want a vote on this, so we are going to have a vote."

An amendment requires approval by a two-thirds majority in each house of Congress before it goes to the states. Three-fourths of the states must pass an amendment before it becomes part of the Constitution.

Afterward, amendment advocates expressed regret at the vote but promised to keep working for its ratification.

Acknowledging he is "disappointed," President Bush said in written remarks, "My position on this issue is clear: Marriage is the most fundamental institution of our society, and it should not be redefined by activist

judges. The people must be heard on this issue."

Richard Land, president of the Southern Baptist Ethics & Religious Liberty Commission, told Baptist Press, "Defenders of marriage owe a debt of gratitude to Majority Leader Bill Frist and the other senators who insisted over the objections of many of their colleagues on both sides of the aisle that this issue come to the floor for a vote. They should also draw encouragement that we did get one more vote than in 2004."

Frist said in a written statement, "We must continue fighting to ensure the Constitution is amended by the will of the people rather than by judicial activism." □

Dewey Dunn, Roy Renfro

Nashville physicians serve at Ghanaian Baptist hospital

By Connie Davis Bushey
Baptist and Reflector

NASHVILLE — Roy Renfro and Dewey Dunn, Nashville physicians, saw a lot of healing while serving recently at the Baptist Medical Centre in Nalerigu, Ghana.

But they also saw a lot of death.

The two physicians served there to relieve Danny Crawley, Southern Baptist missionary and physician, to take a 10-day vacation. Crawley will not be able to take another vacation for six months, explained Renfro, retired general surgeon and member of Forest Hills Baptist Church, Nashville. The staff of the medical centre is struggling because of the absence of George Faile III, missionary physician who is in the states with his wife who has cancer.

The need is so great there, explained Renfro, that he and Dunn started treating Ghanaians minutes after they arrived. Dunn is a gastroenterologist and member of Woodmont Baptist Church, Nashville.

The centre draws many patients because it is located many miles from the capital city of the country, Accra, so it meets the needs of many isolated and poor Africans, explained Renfro.

He and his wife, Carolyn, a nurse, have served on many mission efforts over the past 20 years. Renfro has served in Guatemala, Tanzania, Mexico, Venezuela, Portugal, Honduras, Brazil, Kenya, Sierra Leone, England, and Chile, sometimes several times. Renfro has done health care work, but also evangel-

ism and construction. He's a woodworker by hobby. This was only the second time he has served as a surgeon for a majority of the time, but he was needed, he explained.

Dunn, a veteran missions volunteer, also was needed though he is not a surgeon. Dunn has served on about 80 trips. He learned of the need for relief doctors for the centre through the Baptist Medical Dental Fellowship.

Dunn and Renfro have known each other for about 35 years and been prayer partners for nearly all of that time. They left with the blessing of their wives, they said, and enjoyed a spiritual retreat while in Ghana.

Southern Baptist

Renfro said Baptists can be very proud of their investment in the Baptist Medical Centre in Nalerigu. It is the area's biggest employer, providing jobs to about 200 people. Many of the nurses live on the centre's compound. Only one of the staff not considering the doctors has a car, noted Renfro. Staff members make about \$40 a month. Staff also teach health classes as preventative measures.

Chaplains serve as a witness to patients and family members. As a result, 72 churches or preaching points are located in the area.

The hospital has about 100 beds. The only areas air conditioned are the operating and delivery rooms although the temperature was about 100 degrees each day.

The hospital is staffed by four Southern Baptist missionary health care workers. They are helped by volunteers, medical residents, and



PATIENTS WAIT TO BE treated and family members of patients stand in front Baptist Medical Centre in Nalerigu, Ghana.

medical students from the United States.

The work

Dunn and Renfro treated many patients with diseases which are common there but uncommon to many Americans. They saw patients with elephantiasis, meningitis, tuberculosis, hepatitis, rabies, typhoid, AIDS, and malaria. Thankfully, the hospital has an isolation ward for infectious patients. It also has homes where tuberculosis patients can live for lengthy periods of time required to treat that disease.

Dr. Renfro repaired some ruptured bowel which is a result of typhoid. He removed some tumors. Some he couldn't operate on because the anesthesiologist who administers general anesthesia wasn't available.

Renfro also performed C-sections to deliver babies and treated appendicitis. He and Dunn treated a lot of snake bite

victims and abscesses resulting wounds.

Renfro was asked by surgical technicians to repair a pastor's hernia. The pastor was healing well when they left. Tennesseans reported. The request compliment to Renfro on his technical skills, said Dunn.

They met a mother who had traveled many miles from her village by bus to see an ill baby and another child. She and Dr. Dunn saw the baby take a few breaths and die.

"Nothing could be done," said Dunn. "It was too late."

The staff offered to bury the child in the hospital compound. The mother refused, explaining she wanted to take the child home.

Dunn and Renfro gave her \$60 so she and her child could travel home by bus.

The doctors and the staff saw one or two people die each day.

But they were blessed by the smiles of the Africans when they received anti-venom or treatment for an abscess, said Renfro.

"I'm glad I lived long enough to see Africa," said Dunn. He especially enjoyed worshipping with the Ghanaians at church services he and Renfro attended. "They might be poor economically, but they are rich spiritually," said Dunn.

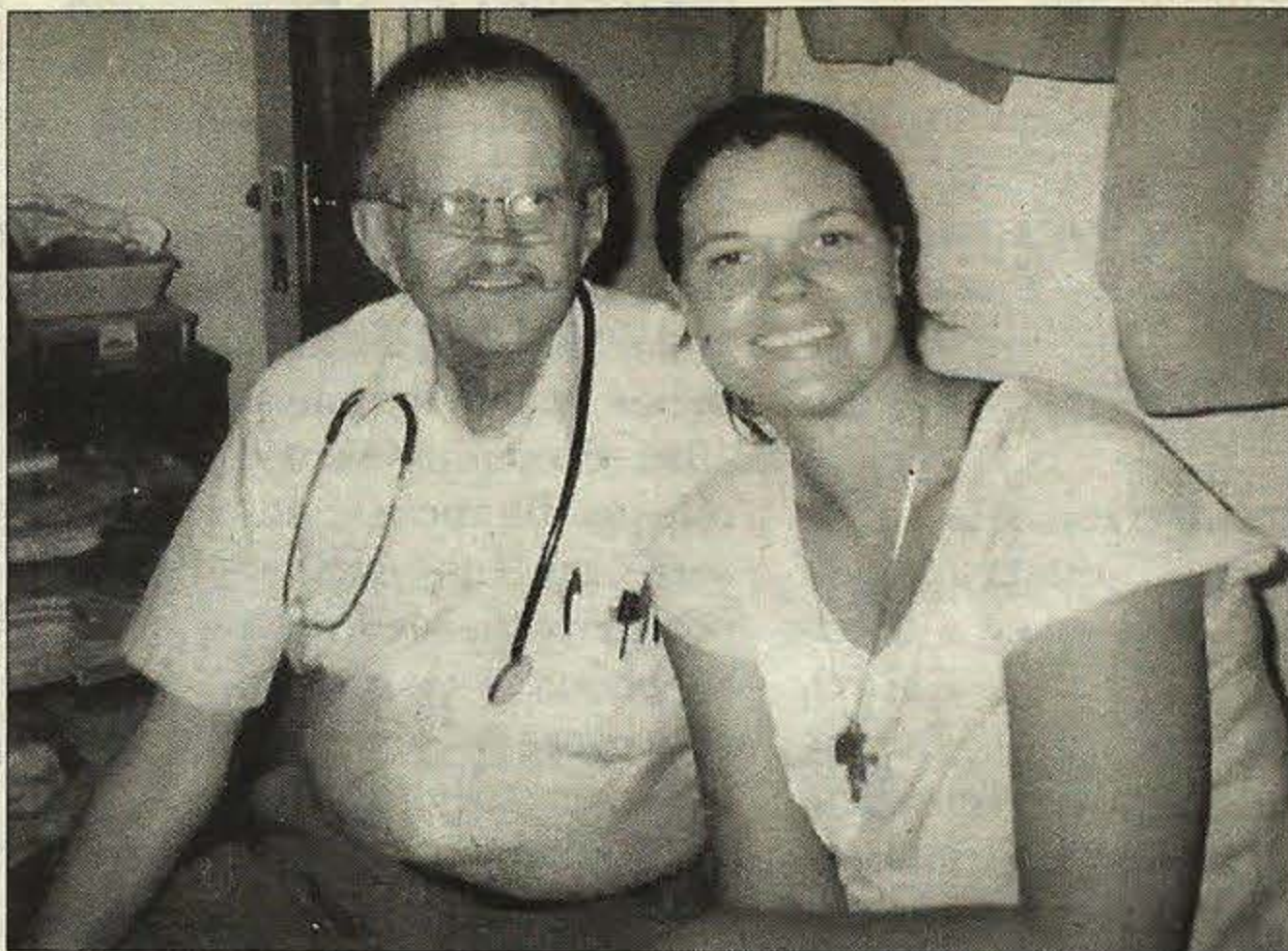
"The people seemed to be so appreciative," said Renfro. Their "living testimonies" which they can't control, he said, are many of their health problems, he said.

Renfro admitted he was expecting serious diseases, but he's old enough to think he would "probably die of something else."

"There's so much that needs to be done," Renfro added. He is considering returning. □



ROY RENFRO, left, retired surgeon of Nashville, stands with Danny Crawley, missionary physician, and Jane Paysinger, missionary pharmacist, of the Baptist Medical Centre, Nalerigu, Ghana. Renfro and Dunn relieved Crawley so he could take some vacation.



DEWEY DUNN, gastroenterologist of Nashville, pauses with Megan Shaw, medical student from Virginia, during their work at the Baptist Medical Centre in Nalerigu, Ghana.

Kempers to return to international missions ...

— Continued from page 1
ple were killed by tornados.

"Our people have responded in just terrific ways," said Kemper.

He noted Gibson County Association has 53 churches, but about 60 percent of them have less than 100 in Sunday morning worship service. The association is located in northwest Tennessee.

Another illustration of Kemper's involvement in missions is one of the last things he will do as DOM — lead an association team to Romania June 15-24. His last official day as DOM will be July 15.

Kemper said he is not leaving because of any frustration. "On

the contrary, everything is right. That is why I can leave."

The couple is participating in "the continuing journey that the Lord has called us to," he added.

Personal journey

Kemper credited Tennessee Baptists with opening his eyes to missions. From Arkansas where he graduated from Ouachita Baptist University, Arkadelphia, Ark., he moved to Tennessee to serve churches full-time. He served Child's Memorial Baptist Church, Harman; White Hall Baptist Church, Trenton; and Green River Baptist Church, Waynesboro. Kathy, the former Kathy Woody, is from Kingston.

Mike said he was introduced

to international missions in 1982 as he participated in the Tennessee/Upper Volta (now Burkina Faso) Project.

While operating a bulldozer to form a lake and a dam there, God "opened my eyes and changed my life and I've never been the same," said Kemper.

He also participated in Tennessee Baptist Convention or state association projects in Mexico, France, and Romania.

He said the hardest part of leaving the United States is leaving his family, including his parents in Bryant, Ark., and two sons and their children. Mike and Kathy will leave behind four grandchildren, from 14 years old to 4. They live in Milan



M. KEMPER



K. KEMPER

and Jackson. Kathy is leaving her job with a Jackson physician in the insurance area.

The couple's first stint in international work prepared them in some ways, said Mike. They left a son who was just completing Air Force boot camp. It was tough to get phone calls from him, said Mike, when he was homesick and having a

tough time, said Kemper. "God was faithful," he said.

Kemper said he has decided if learning Spanish will be harder or easier based on the fact that both Romanians speak Spanish and Latin American romance languages.

Kemper invited Tennessee Baptists to contact him after C-2006 in Costa Rica to learn about missions opportunities there. One of his job will be to coordinate volunteer teams from Tennessee serving in the country with them. The trip only takes about four weeks.

"We're looking for Tennessee folks to come with us," Kemper said. □

Much ado

There is much ado about a new book entitled *The Da Vinci Code* which has been made into a movie. Everywhere you go you hear about it.

Who is this man who lived now is dead that we choose to listen to? Did he know something that we should know and pass down through the ages and have gained by following him?

I have no intention of reading the book or seeing the movie. I have been taught for several years by the Holy Spirit of God and do not need the teaching of a dead man. The Spirit is my teacher and He reminds me of everything Jesus has said to me.

My reason for writing is to use the teaching through the Word of God and not by studying the Da Vinci book. As I read the fifth chapter of Ephesians, especially verse 12, I see it is wrong to even talk about the things that people do are wrong. As a Christian, I know that we talk too much about wrong things and too little about the things of God that will set us free from the wrong.

Therefore, my thought for the future is this: If Christians stop talking about the book and start reading the Bible and praying for the guidance of the Holy Spirit, then we will see Him doing His work and soon the book will no longer be on the seller list and will soon be forgotten.

Be still and know that I am His such a profound Scripture. When we stop our work and let Him do His work we will see the changes in the world.

Dorothy Blake
Alcoa 37701

Appreciates story

I would like to thank Connie and the B&R for the interesting article "Prisoners of the Church" in the April 26 issue. I want to thank God for the transforming work He has done in Cheryl Holcomb, Linda Oakley, and the other inmates.

Volunteers, including me, know the sincerity of women and the love they have for God and His work. Five years ago Linda, volunteer chaplain, invited me to be one of the many volunteers through the chapel at TPW. As in most of our volunteer efforts, there is no selfishness. God worked in my life and blessed me more than I could ever express.

As Tennessee Baptists can be challenged to disciple new members by providing more in-home small group discipleship as these women received through the chapel at TPW. I think it is likely there are more people praising God's name in our homes and testimony at Freedom Chapel on Sunday evenings than in any of our individual churches.

In addition to worship services, Freedom Chapel includes small group Bible studies to facilitate increased knowledge of God.

Those of us on the "outside" enjoy our "freedom." We have freedom to go to a movie instead of church; freedom to go visit friends on the other side of town; and freedom to go to Wal-Mart or the grocery store instead of learning more about God.

We seem to be involved in the sin of busyness. The ladies on the "inside" have been put in "time-out" where they do not have the choices we have. They can choose to become bitter or better. I praise God that many women at TPW have chosen to let God help them become better.

May God receive all the praise and glory for how He has worked through this church to touch the lives of inmates.

Kay Quintero
Smithville 37166

Lessons learned

The following is a list of some of the important lessons I learned while attending the special session of the Tennessee Baptist Convention on May 9 at Two Rivers Baptist Church.

- Approximately 75 percent of Tennessee Baptists do not know how to use *Robert's Rules of Order*. I would encourage them to pick up a copy and begin to read immediately.

- You can amend an amendment to a proposal.

- That some Tennessee Baptists are more concerned about what the media thinks than about doing the right thing. I have a bit of advice for these people. The media will always spin our actions in a negative light. So, let's not worry about them and focus on doing what God has called us to do.

- That some Tennessee Baptists are good at taking Scripture out of context and using it to promote their own thoughts or ideas instead of taking personal responsibility for them. During this meeting I heard God's Word used to promote opposing ideas.

- It is amazing that 1,700 Baptists can agree on anything.

- We did not choose these times, they chose us.

- Sometimes you have to just stop and pray to retain your focus.

On a more serious note, I was proud to be a Tennessee Baptist on May 9. As a younger leader in our convention I know that many in my generation do not like to get entangled in the workings of the TBC. Some may view May 9 as a classic example of Baptist leaders fighting amongst themselves and taking an entire day to make only a few decisions. However, I witnessed 1,700 men and women of God come together from all over the state to work out their differences, make some very hard decisions, and move forward in a

unified manner. To God be the glory!

Dale Braswell, youth minister
Inglewood Baptist Church
Nashville 37216

Pray for board

I would like to call all those who love our TBC to be much in prayer for our Executive Board as they give great consideration to the Belmont issue.

This call to prayer is not coming from someone who believes that our Executive Board has always represented the convictions of the majority of Tennessee Baptists in the recent past. In fact, I'll admit that I was one of about 100 who voted against the recommendation that gave complete control to the Belmont Study Committee (see the May 17th issue of the B&R).

The reason for my opposition is that I do believe that the Executive Board has demonstrated on several occasions that they aren't "in concert" with the feelings and beliefs of the vast majority of Tennessee Baptists. Case and point:

Not only did several Belmont Study Committee members endorse the acceptance of the settlement agreement at the special called meeting, but as I understand it there were only five members of the Executive Board who voted against bringing the acceptance of the settlement to the floor. I know our convention attorney, Randle Davis (a man for whom I have profound respect), stated that the messengers would not have been able to have voted on the motion without the approval of the Executive Board, but I question that position. I'm not aware of anything in our Constitution & Bylaws or within our parliamentary rule that would've prohibited the Executive Board from presenting a motion to the messengers that we reject the settlement offer from Belmont.

In my opinion, the reason we were presented with a motion to approve was because the overwhelming majority of the Executive Board wanted the settlement, and their comments at the annual meeting seem to prove it. In any event, we need to be in prayer for this special study committee and the entire Executive Board.

Let us pray that they not only seek to faithfully represent the majority of Tennessee Baptists, but even more that they seek to know and do the will of the Almighty. May God bless our Convention as we seek to glorify Him!

Todd Stinnett, pastor
Grace Baptist Church
Morristown 37815

Editor's Note: Randle Davis, Convention attorney, advised the messengers in attendance at the special-called meeting on May 9, that the Executive Board did not have an alternative "if" it wanted the Convention messengers to have an opportunity to consider

Belmont's settlement proposal. Mr. Davis stated further that the basis for this action was a "condition precedent" that Belmont's representatives placed upon their settlement offer. However, had the Executive Board not recommended that the settlement offer be accepted, then Belmont's settlement offer by law would have been null and void irrespective of how the Convention messengers might have been inclined to vote on the issue. Accordingly, the action by the Executive Board was not a Constitution & Bylaws or parliamentary rule issue.

No women?

Aren't there any women in the entire Tennessee Baptist Convention capable of serving on the Belmont Study Committee?

Danny Chisholm, pastor
Signal Mountain Baptist Church
Signal Mountain 37377

Shameful

Thanks for the article in the May 24 issue of the *Baptist & Reflector* which tells us that S.C. pastor Frank Page will allow his name to be placed into nomination for the office of president of our SBC at the annual meeting next month. Apparently this pastor and the church he serves is serious about evangelism. Brother Page's church gave \$535,000 — or 12.1 percent of its \$4.4 million undesignated offerings to our Cooperative Program last year.

Isn't it interesting who Paige Patterson (Southwestern Baptist Theological Seminary president) supports for president of our SBC? This pastor has served a large church in Arkansas for 20 years which had a shameful record of support for our CP last year. This church in Springdale Ark., which had \$12 Million in undesignated receipts, gave \$32,000 or 0.27 percent of those available undesignated receipts to the CP. And the reason this pastor gave: "It's real difficult to spend percentages."

Then as I turned to page 4 of the B&R, I noticed the small country church I attend — Smyrna Baptist in Burlison — was third in per capita giving for 2004-2005.

Praise The Lord for our former pastor, J.V. Reeves who taught us the importance of supporting our Cooperative Program. And we had a strong WMU who constantly emphasized missions for us. The CP is the very backbone of what we Southern Baptists are all about.

For 20 years, folks at Smyrna have contributed 20 percent of all undesignated offerings to our Cooperative Program each and every year.

Apparently, controlling the SBC is more important to some of our leaders than supporting our missionaries who are doing the Lord's work all over the world. Shameful!

Roy Warmath
Munford 38058

a parent speaks



By Carolyn R. Tomlin

Lessons from our fathers

In the early 1900s states and organizations began lobbying Congress to set aside an annual day to honor fathers in America. President Woodrow Wilson approved of the idea in 1916, but it didn't come to pass until 1924 when President Calvin Coolidge made this proclamation: "To establish more intimate relations between fathers and their children and to impress upon fathers the full measure of their obligations." Since that date, the third Sunday in June has been designated as Father's Day.

The Bible is the Christian family's guide for parenting. How can fathers apply the Bible's wisdom as they lead their children in life?

As I watched an 8-year-old boy playing baseball, I noticed how tense he appeared as he swung at the ball and struck out. The difficult time, however, came after the game when he had to hear the lecture of how he had embarrassed his father. Listen to what Colossians 3:21 says, "Fathers, do not embitter your children, or they will become discouraged."

Children who have not been taught responsibility can't be expected to make mature decisions. How unfortunate it is for youth who do not have someone to set ground rules. There will come a time when someone will provide discipline — perhaps in the courts of law or other agencies. Because fathers love their discipline. Discipline should come in talking through the problem and listening with the heart as well as the head. Proverbs 3:11-12 says, "My son, do not despise the Lord's discipline and do not resent his rebuke, because the Lord disciplines those he loves, as a father the son he delights in."

Anna, age 10, found a woman's purse lying on the street near her home. Opening it, she discovered four-hundred dollar bills. "For a moment, I thought about keeping the money and never saying anything," said Anna. "But I realized that wasn't being honest. My parents taught me to tell the truth."

Proverbs 23:15 says, "My son, if your heart is wise, then my heart will be glad; my inmost being will rejoice when your lips speak what is right."

Being the father God intended requires time, patience, and wisdom. We teach both the good and, not so, good lessons. Ask God to bless you as you teach lessons about life and living to your children. □ — Tomlin writes for numerous Christian publications. Her husband Matt is pastor of Ward's Grove Baptist Church, Jackson.

TREASURER'S REPORT SECOND QUARTER

November 1, 2005 - April 30, 2006

	Cooperative Program	Designated SBC	Designated TBC	Total
GIFTS AND OTHER INCOME				
Cooperative Program:	18,053,468			18,053,468
Designated to SBC/TBC Institutions		1,397,535	941,565	2,339,100
Lottie Moon Offering for International Missions		9,495,718		9,495,718
Annie Armstrong Offering for N. American Missions		1,519,979		1,519,979
Golden Offering for Tennessee Missions			666,730	666,730
CP/Designated gifts received from the Tennessee Baptist Foundation	118,183	28,620	15,452	162,255
Other Special Gifts			402,287	402,287
Total Gifts	18,171,651	12,441,852	2,026,034	32,639,537
Other Income (Guidestone, NAMB, LifeWay, Conference Centers, interest, refunds, B&R advs./subscriptions)			2,345,138	2,345,138
Total Receipts	18,171,651	12,441,852	4,371,172	34,984,675
ALLOCATIONS				
SOUTHERN BAPTIST CONVENTION				
International Missions	3,634,330	10,225,335		13,859,665
North American Missions	1,657,255	1,598,984		3,256,238
Six Seminaries	1,570,031	317		1,570,348
Ethics & Religious Liberty Commission	109,030	45		109,075
Guidestone	58,149	45		58,195
Other SBC Gifts	239,866	617,125		856,991
Total SBC Gifts	7,268,661	12,441,852	0	19,710,513
TENNESSEE MISSIONS AND MINISTRIES				
Evangelism	1,088,519		380,429	1,468,948
Missions	980,246		124,085	1,104,332
Discipleship	1,005,548		28,904	1,034,452
Ministry	685,697		106,785	792,481
Worship	297,912		8,563	306,476
Prayer	250,766		7,208	257,974
Fellowship	277,658		7,981	285,639
Associational Support	646,482		18,583	665,065
Administration	290,382		113,510	403,892
Total TN Missions and Ministries	5,523,211	0	796,049	6,319,260
CONVENTION OPERATIONS				
Baptist and Reflector	205,948		5,265	211,213
TBC Meetings & Committees	191,299		4,792	196,090
Church Annuity Plan	722,157		18,360	740,517
TBC Conference Centers	82,785		2,081	84,866
Cooperative Program Promotion	45,473		1,193	46,667
TBC Audits	61,878		1,615	63,494
Total Convention Operations	1,309,540	0	33,306	1,342,846
CHRISTIAN EDUCATION				
Carson Newman College	1,401,076		128,678	1,529,753
Union University	1,401,076		39,042	1,440,117
Harrison Chilhowee	249,659		19,284	268,944
Historical Archives	6,909		195	7,103
CRV Scholarships	34,542		881	35,423
Total Christian Education	3,093,261	0	188,079	3,281,341
CHRISTIAN SERVICES				
TN Baptist Adult Homes	138,133		52,788	190,921
TN Baptist Children's homes	670,226		547,914	1,218,140
TN Baptist Foundation	168,619		5,611	174,230
Total Christian Services	976,978	0	606,313	1,583,291
OTHER SPECIAL GIFTS				
American Bible Society			125	125
Tenn. Drug Awareness Council			21,392	21,392
Disaster Relief			356,892	356,892
Other Special Gifts			23,877	23,877
Total Other Special Gifts	0	0	402,287	402,287
Total Allocations	18,171,651	12,441,852	2,026,034	32,639,537
Other Income (Guidestone, NAMB, LifeWay, Conference Centers, interest, refunds, B&R advertisement/subscription income)			2,345,138	2,345,138
Total Allocations	18,171,651	12,441,852	4,371,172	34,984,675

Church	CP	Designated SBC	Designated TBC	Total	Church	CP	Designated SBC	Designated TBC	Total
Alpha Baptist Association					Beech River Baptist Association				
Bon Aqua	1,618	2,045	0	3,663	Bath Springs	0	8,569	7,350	15,919
Bread Of Life	1,856	764	0	2,620	Beacon	150	200	0	350
Centerville 1st	4,212	2,770	0	6,982	Bear Creek	1,953	460	0	2,413
Cross Roads	2,435	600	200	3,235	Beech Lake	100	50	0	150
East Hickman	676	0	0	676	Beech River	0	0	0	0
Edgewood	350	550	550	1,450	Bible Hill	1,179	1,348	100	2,627
Fairfield	7,212	1,067	464	8,743					
Garrett	599	429	0	1,028					
Highland	1,662	692	0	2,354					
Hohenwald 1st	21,214	5,379	0	26,593					
Lick Creek	500	496	0	996					
Linden 1st	4,700	928	50	5,678					
Lobelville 1st	1,400	2,126	0	3,526					
Maple Valley	159	0	0	159					
New Beginnings Msnry	0	0	0	0					
New Hope	0	250	0	250					
Only	150	100	0	250					
Pine Grove	817	180	0	997					
Pinewood 1st	3,138	554	0	3,692					
Piney	734	155	115	1,004					
Tom's Creek	2,608	638	1,700	4,946					
Wrigley	1,321	0	0	1,321					
Total	57,362	19,723	3,079	80,165					
Beech River Baptist Association					Big Hatchie Baptist Association				
Bon Aqua	1,618	2,045	0	3,663	1st Indian	0	0	0	0
Bread Of Life	1,856	764	0	2,620	Ashport	1,046	1,073	529	2,648
Centerville 1st	4,212	2,770	0	6,982	Beaver	2,400	3,130	198	5,728
Cross Roads	2,435	600	200	3,235	Brighton 1st	13,140	5,330	685	19,155
East Hickman	676	0	0	676	Calvary	2,804	893	215	3,912
Edgewood	350	550	550	1,450					
Fairfield	7,212	1,067	464	8,743					
Garrett	599	429	0	1,028					
Highland	1,662	692	0	2,354					
Hohenwald 1st	21,214	5,379	0	26,593					
Lick Creek	500	496	0	996					
Linden 1st	4,700	928	50	5,678					
Lobelville 1st	1,400	2,126	0	3,526					
Maple Valley	159	0	0	159					
New Beginnings Msnry	0	0	0	0					
New Hope	0	250	0	250					
Only	150	100	0	250					
Pine Grove	817	180	0	997					
Pinewood 1st	3,138	554	0	3,692					
Piney	734	155	115	1,004					
Tom's Creek	2,608	638	1,700	4,946					
Wrigley	1,321	0	0	1,321					
Total	57,362	19,723	3,079	80,165					

Church	CP	Designated SBC	Designated TBC
Scotts Hill 1st	6,715	2,635	601
Southside Msnry	0	0	0
Tomlin Chpl	0	0	0
Twin Oaks	565	0	0
Union	4,677	1,732	397
Union Grove	1,788	1,249	248
Wildersville	1,659	493	275
Total	177,227	69,817	11,137
Beulah Baptist Association			
Alamo	1,007	0	0
Aldridge	100	0	0
Antioch	885	1,227	0
Antioch	0	0	0
Bethel	0	0	0
Blessed Hope	769	681	0
Broadway	600	640	0
Calvary	8,729	1,436	0
Casa de Gozo	0	0	0
Cottonwood	500	284	0
Cottonwood Grove	1,301	0	700
Crosswind	600	0	0
Cypress Creek	0	0	0
Fairview	667	991	50
Greater Hope	50	0	0
Hornbeak	1,326	1,233	0
Johnson Grove	562	0	0
Lake Road	1,200	593	0
Lakeview	222	715	25
Macedonia	3,105	873	0
Martin 1st	63,056	35,005	2,135
McConnell	2,031	778	0
Mt Moriah	150	100	0
Mt Olive	1,917	370	0
Mt Pelia	8,034	1,977	10
New Concord	502	341	0
New Home	876	6,118	3,058
New Salem	4,330	1,359	0
Obion 1st	3,604	1,235	526
Phillippy	0	0	0
Pleasant Hill (M)	5,920	9,077	0
Pleasant Hill (UC)	5,037	2,167	673
Reelfoot	1,579	0	0
Ridgely 1st	11,914	4,390	3,309
Samburg	2,268	0	35
South Fulton	26,308	3,552	1,542
Sunswept	5,997	646	0
Tiptonville 1st	5,192	1,923	575
Troy 1st	14,153	3,753	0
Union City 1st	27,413	13,406	3,906
Union City 2nd	55,007	11,149	181
Walnut Log	0	0	0
Willingham Mem	0	0	0
Woodland Mills 1st	19,448	15,393	1,826
Wynnborg	2,730	707	0
Total	289,090	122,117	18,550
Big Emory Baptist Association			
Beech Park	14,340	1,743	0
Bethel	0	0	0
Big Emory	2,668	1,302	0
Big Ridge Road Msnry	1,208	865	0
Calvary	900	1,016	0
Calvary Msnry	0	0	0
Caney Ford	2,157	1,812	1,091
Cardiff	1,071	1,271	0
Cedar Grove	14,299	36,530	0
Central	1,659	1,715	365
Chapman Grove	1,575	1,272	0
Childs Mem	3,295	1,875	166
Clymersville	5,242	1,505	0
Coal Hill Msnry	505	0	0
Crab Orchard	717	300	300
Daysville	1,508	3,260	0
Deer Lodge	2,443	1,503	300
Dyllis	3,207	689	0
East Robbins Msnry	0	0	0
Elizabeth Msnry	812	0	0
Emmanuel Msnry	0	0	0
Eureka	3,747	6,489	100
Fairview Msnry	1,160	2,043	0
Faith Msnry	1,415	207	114
Glenmary Msnry	0	0	0
Huntsville 1st Msnry	1,021	814	200
Ivy Grove Msnry	0	0	0
Kellytown	6,800	0	0
Kingston 1st	0	20,570	2,870
Lakeview	1,733	1,450	0
Laurel Bluff	858	150	0
Lee Village	1,064	1,171	1,533
Liberty	12,647	6,842	0
Low Gap Msnry	734	200	0
Middle Creek	6,627	3,354	139
Mossy Grove	2,601	3,642	0
New Haven Msnry	6,295	6,075	10
New Heights	2,053	0	0
Nicks Creek Msnry	0	0	0
Norma Msnry	0	0	0
Oakdale 1st	4,259	1,150	1,074
Oneida 1st	26,130	6,183	452
Orchard View	1,203	1,149	0
Petros	5,754	2,470	0
Pine Orchard	5,912	4,985	0
Pine Ridge Msnry	5,925	1,522	861
Piney	13,117	5,309	155
Piney Grove	1,938	1,300	0
Pleasant Grove	7,939	1,395	0
Pond Grove	1,487	0	0
Riggs Chpl	1,578	254	0
Riverside	15,352	5,566	3,030
Riverview Msnry	0	0	0
Robbins 1st Msnry	976	373	0
Rockwood 1st	22,375	19,264	2,407
Rockwood 2nd	963	255	0
Shiloh	10,500	8,783	519
Smokey Creek Msnry	0	0	0
South Harriman	36,015	27,267	1,198
Sunbright 1st	7,217	2,295	0
Trenton Street	16,350	4,140	1,145
Union	2,645	0	276
Union Chpl	1,375	500	0
Walnut Hill	4,119	2,448	1
Warburg 1st	14,299	2,600	500
Westel	1,383	1,051	0
White's Creek	3,338	1,912	1,298
Winfield	0	0	0
Total	318,509	211,836	20,103
Big Hatchie Baptist Association			
1st Indian	0	0	0
Ashport	1,046	1,073	529
Beaver	2,400	3,130	198
Brighton 1st	13,140	5,330	685
Calvary	2,804	893	215

Church	CP	Designated SBC	Designated TBC	Total
Arby Hill	1,635	535	0	2,170
Arby Hill	6,248	583	0	6,831
Arby Hill	4,550	2,905	160	7,615
Arby Hill	58,133	34,414	868	93,414
Arby Hill	0	0	0	0
Arby Hill	1,939	0	0	1,939
Arby Hill	1,100	400	0	1,500
Arby Hill	164	332	41	538
Arby Hill	3,500	3,403	0	6,903
Arby Hill	8,543	1,790	241	10,574
Arby Hill	1,577	0	0	1,577
Arby Hill	491	400	543	1,434
Arby Hill	10,522	3,349	2,935	16,806
Arby Hill	16,001	5,317	723	22,041
Arby Hill	5,198	1,137	652	6,987
Arby Hill	0	0	205	205
Arby Hill	0	0	1,000	1,000
Arby Hill	7,962	1,000	0	8,962
Arby Hill	2,006	13,611	0	15,617
Arby Hill	0	214	0	214
Arby Hill	1,782	1,345	400	3,527
Arby Hill	2,960	1,357	0	4,317
Arby Hill	22,770	3,450	330	26,550
Arby Hill	17,707	9,107	2,063	28,876
Arby Hill	599	137	378	1,114
Arby Hill	9,254	2,216	470	11,940
Arby Hill	383	100	0	483
Arby Hill	20,872	10,030	1,275	32,177
Arby Hill	372	1,000	0	1,372
Arby Hill	23,789	6,989	500	31,278
Arby Hill	0	0	249	249
Arby Hill	5,493	68	0	5,562
Arby Hill	1,119	0	0	1,119
Arby Hill	3,728	249	10	3,987
Arby Hill	2,734	2,305	1,562	6,601
Arby Hill	390	355	50	795
Arby Hill	200	1,125	0	1,325
Arby Hill	263,111	119,648	16,282	399,041
Bledsoe Baptist Association				
Arby Hill	0	0	0	0
Arby Hill	300	208	0	508
Arby Hill	175	1,965	0	2,140
Arby Hill	1,033	739	630	2,402
Arby Hill	0	0	0	0
Arby Hill	40	67	0	107
Arby Hill	22,081	1,125	0	23,206
Arby Hill	80	100	0	180
Arby Hill	0	0	0	0
Arby Hill	2,993	0	200	3,193
Arby Hill	0	1,000	0	1,000
Arby Hill	1,386	0	0	1,386
Arby Hill	180	0	0	180
Arby Hill	11,201	26,884	9,015	47,101
Arby Hill	3,213	680	522	4,415
Arby Hill	228	0	0	228
Arby Hill	12,162	10,514	90	22,766
Arby Hill	300,769	101,972	10,069	412,810
Arby Hill	0	0	0	0
Arby Hill	2,250	0	0	2,250
Arby Hill	4,079	2,149	0	6,228
Arby Hill	353	295	0	648
Arby Hill	2,538	1,000	0	3,538
Arby Hill	0	813	0	813
Arby Hill	8,239	5,329	0	13,568
Arby Hill	72,480	91,529	5,052	169,061
Arby Hill	400	0	0	400
Arby Hill	1,566	1,295	500	3,361
Arby Hill	1,784	240	0	2,024
Arby Hill	0	0	0	0
Arby Hill	0	0	0	0
Arby Hill	726	679	825	2,230
Arby Hill	1,046	334	0	1,380
Arby Hill	600	680	627	1,907
Arby Hill	1,227	285	0	1,512
Arby Hill	1,595	0	0	1,595
Arby Hill	15,590	12,792	2,951	31,333
Arby Hill	272	0	0	272
Arby Hill	0	451	0	451
Arby Hill	900	202	0	1,102
Arby Hill	7,832	5,168	756	13,756
Arby Hill	2,143	180	0	2,323
Arby Hill	5,520	425	0	5,945
Arby Hill	486,982	269,101	31,237	787,319
Bradley County Baptist Association				
Arby Hill	0	0	0	0
Arby Hill	637	0	0	637
Arby Hill	12,439	760	331	13,530
Arby Hill	8,342	4,563	0	12,905
Arby Hill	1,350	785	0	2,135
Arby Hill	1,427	1,548	431	3,406
Arby Hill	3,799	0	0	3,799
Arby Hill	14,663	75,308	1,543	91,515
Arby Hill	0	0	0	0
Arby Hill	0	0	0	0
Arby Hill	3,099	1,447	0	4,546
Arby Hill	0	0	0	0
Arby Hill	147,766	113,276	27,475	288,516
Arby Hill	0	0	0	0
Arby Hill	0	960	0	960
Arby Hill	721	0	0	721
Arby Hill	2,816	371	0	3,187
Arby Hill	0	233	556	789
Arby Hill	700	200	0	900
Arby Hill	0	0	0	0
Arby Hill	1,747	300	0	2,047
Arby Hill	900	0	500	1,400
Arby Hill	0	0	556	556
Arby Hill	0	0	0	0
Arby Hill	0	15	0	15
Arby Hill	848	0	0	848
Arby Hill	1,165	400	0	1,565
Arby Hill	3,755	2,758	1,596	8,110
Arby Hill	0	0	0	0
Arby Hill	1,000	0	0	1,000
Arby Hill	1,714	485	0	2,199
Arby Hill	3,456	720	50	4,226
Arby Hill	755	0	0	755
Arby Hill	5,575	1,091	0	6,666
Arby Hill	5,377	489	752	6,618
Arby Hill	4,926	8,203	2,573	15,702
Arby Hill	6,642	2,813	200	9,655
Arby Hill	0	0	0	0
Arby Hill	350	0	0	350
Arby Hill	6,195	4,505	0	10,700
Arby Hill	0	0	0	0
Arby Hill	2,267	1,060	0	3,327
Arby Hill	45,604	25,125	4,075	74,804
Arby Hill	1,147	565	0	1,712
Arby Hill	3,055	1,000	0	4,055
Arby Hill	17,294	5,830	0	23,125
Arby Hill	125	0	0	125

Church	CP	Designated SBC	Designated TBC	Total
Rolling Brook	0	0	0	0
Samples Mem	200	100	100	400
Stuart Park	600	672	407	1,679
Tasso	894	640	0	1,534
Thompson Springs	1,033	836	0	1,868
Union Msny	175	640	100	915
Valley View	7,252	1,141	380	8,773
Walker Valley	0	0	0	0
Washington Ave	0	0	0	0
Waterville	4,907	11,324	588	16,819
West Cleveland	1,500	1,885	0	3,385
Westwood	100,470	21,194	3,295	124,959
White Oak	0	1,272	600	1,872
Total	428,688	293,553	47,068	769,309
Campbell County Baptist Association				
Alder Springs	679	0	701	1,380
Bethlehem Msny	0	4,532	765	5,297
Calvary	150	1,886	50	2,086
Caryville 1st	5,022	1,216	0	6,238
Cedar Hill	1,348	5,620	980	7,948
Central	0	0	0	0
Coolidge 1st	2,965	665	375	4,005
Crouches Creek	600	277	0	877
Demory	180	2,167	0	2,347
Eagan	143	0	0	143
East Jacksboro	845	2,539	1,689	5,072
East LaFollette	2,258	2,665	2,408	7,331
Elk Valley 1st	600	0	0	600
Glade Springs	1,123	0	2,545	3,668
Hillcrest	2,615	700	0	3,315
Indiana Creek	0	0	0	0
Indiana Ave	7,844	634	2,186	10,664
Jacksboro 1st	3,164	14,686	2,680	20,531
Jellico 1st	4,792	2,242	100	7,134
LaFollette 1st	4,192	19,113	122	23,427
Lake View	900	707	180	1,787
Little Cove Creek	0	0	0	0
Macedonia	0	0	0	0
Midway	0	0	0	0
Morley	250	77	0	327
New Horizon	8,172	3,896	0	12,068
Newcomb	2,446	5,218	0	7,664
Oak Grove	0	1,036	844	1,880
Pruden	0	0	0	0
Stinking Creek	0	0	0	0
West LaFollette	2,069	831	0	2,900
White Oak	0	0	0	0
Total	52,358	70,705	15,625	138,689
Carroll-Benton Baptist Association				
Atwood 1st	4,878	1,994	1,250	8,122
Bethel Msny	2,096	0	0	2,096
Bruceton 1st	3,300	5,158	2,550	11,008
Camden 1st	38,197	8,396	435	47,028
Carroll-Benton	0	0	2,000	2,000
Chalk Level	2,394	1,309	420	4,123
Concord	0	0	0	0
Coopers Chpl	164	172	0	336
Eagle Creek	1,075	800	0	1,875
East Side	2,143	827	0	2,970
Eastview	1,700	702	0	2,402
Enon	472	0	0	472
Eva	1,251	600	0	1,851
Fairview Msny	150	405	0	555
Faith	803	1,906	0	2,709
Grace	0	0	0	0
Holladay	300	515	0	815
Hopewell	1,198	906	0	2,104
Howse	4,454	1,814	176	6,444
Huntingdon 1st	21,932	32,808	1,591	56,331
Liberty Hill	209	0	0	209
McKenzie 1st	26,593	12,856	3,536	42,985
McLemoresville	2,681	575	0	3,256
Msny Grove	5,898	4,276	176	10,350
Mt Nebo	1,441	1,299	0	2,740
Natchez Trace	3,593	2,649	609	6,851
Prospect	3,522	0	0	3,522
Republican Grove	200	0	0	200
Sugar Tree Chpl	875	292	0	1,167
Tennessee River	396	0	0	396
Trezevant 1st	8,021	1,790	492	10,303
Union Academy	1,461	175	0	1,636
Total	141,998	82,699	13,234	237,931
Central Baptist Association				
Barren Fork	253	721	22	996
Bethel Hill	865	1,035	0	1,900
Brown Chpl	0	34	0	34
Campaign 1st	120	0	0	120
Central	0	0	789	789
Cornerstone	0	2,100	0	2,100
Eastside	1,256	3,378	0	4,634
Faith	0	0	0	0
Fall City	932	1,383	0	2,316
Forest Park	617	330	30	977
Gath	5,129	3,556	1,657	10,342
Irving College	1,477	629	0	2,106
Madison Street	1,398	2,204	932	4,534
McMinnville 1st	25,658	20,925	2,712	49,295
McMinnville 1st Hisp	990	689	0	1,679
Morrison 1st	3,512	1,695	500	5,707
Mt Elim	583	150	0	733
New Beginnings	0	0	0	0
Northside	3,687	10,109	0	13,796
Pioneer Comm	4,305	569	0	4,874
Shellsford	3,787	1,174	511	5,472
Smartt 1st	665	457	0	1,122
Trinity	430	556	0	986
Welchland	853	0	0	853
Westside	1,559	1,000	0	2,559
Total	58,075	52,693	7,152	117,921
Chilhowee Baptist Association				
Alcoa 1st	45,758	32,694	8,420	86,872
Alcoa Way	143	0	0	143
Allegheny	0	0	0	0
Armona	12,010	10,178	725	22,913
Beech Grove	40,862	24,581	6,133	71,576
Bethel	7,599	3,317	402	11,318
Birchfield	0	100	0	100
Broadway	22,143	13,812	95	36,050
Calvary	19,549	5,072	0	24,621
Carpenters	0	0	0	0
Carson Island	610	200	0	810
Caylors Chpl	1,293	445	0	1,738
Cedar Grove	1,113	1,235	978	3,326
Centenary	931	1,107	0	2,038
Central Alcoa	4,991	1,289	1,497	7,777
Central Point	14,978	400	0	15,378
Cold Springs	1,400	2,646	815	4,861
Crossroads Comm	1,000	0	0	1,000
Crossroads Msny	0	0	0	0
Dotson Mem	30,935	4,353	6,526	41,813

Church	CP	Designated SBC	Designated TBC	Total
East Alcoa	0	0	0	0
East Maryville	19,200	30,794	7,760	57,754
East Walland	1,656	0	0	1,656
Ellejoy	0	0	0	0
Everett Hills	19,170	14,481	2,375	36,026
Forest Hill	20,584	5,522	30	26,136
Four Mile	4,874	1,530	200	6,604
Friendly Hill	1,427	0	0	1,427
Friendship	7,315	3,655	0	10,970
Friendsville 1st	14,052	4,884	1,708	20,644
Grace Comm	150	150	0	300
Grandview	5,017	4,142	1,142	10,301
Greenback Mem	5,414	1,004	0	6,418
Happy Valley	0	2,390	0	2,390
Hillcrest	0	1,000	0	1,000
Hillview	1,352	1,513	480	3,345
Hopewell	1,067	1,200	0	2,267
Immanuel	6,750	1,302	259	8,311
Kagleys Chpl.	3,946	1,100	755	5,801
Keeble's Chpl	819	0	0	819
Kinzel Springs	0	296	0	296
Laurel Bank	2,251	3,461	0	5,712
Liberty	2,539	625	125	3,289
Little River Flwshp	2,845	0	0	2,845
Louisville 1st	0	0	0	0
Madison Ave	3,000	4,811	581	8,392
Maple Grove	508	2,242	698	3,448
Marble Hill	360	0	0	360
Maryville 1st	6,448	30,049	10,362	46,859
Meadowbrook	0	104	110	213
Memorial	3,477	1,902	513	5,892
Midway	0	0	0	0
Miller's Cove	1,249	360	0	1,609
Monte Vista	2,785	2,158	16,007	20,949
Mt Carmel	2,786	1,575	0	4,361
Mt Lebanon	34,424	22,768	2,030	59,222
Mt Zion	0	1,000	0	1,000
Niles Ferry	3,378	1,610	0	4,988
Oak Hill	0	331	0	331
Oak Street	1,884	1,748	63	3,694
Oak View	6,191	1,377	0	7,568
Old Chilhowee	0	0	0	0
Old Piney Grove	4,064	2,779	0	6,842
Parkway	42	253	0	295
Pilgrim	936	500	0	1,436
Piney Grove	11,283	2,637	907	14,827
Piney Level	6,276	5,999	0	12,275
Pleasant Grove	15,056	5,152	1,135	21,342
Prospect	5,871	3,784	391	10,047
Providence Msrny	10,354	14,733	7,736	32,823
Resurrection	96	0	0	96
Rockford	0	747	0	747
Rocky Branch	4,913	2,100	0	7,013
Salem	2,065	3,475	0	5,540
Six Mile	14,887	11,034	100	26,021
Smoky View	0	0	0	0
Springview	8,407	14,999	2,508	25,913
Stock Creek	29,932	21,883	1,310	53,125
Tuckaleechee	1,159	500	0	1,659
Union Grove	0	0	0	0
Unity	7,618	2,269	625	10,512
Village	0	200	0	200
West Maryville	0	0	0	0
Wildwood	4,307	5,517	476	10,300
Zion Chpl	1,000	0	0	1,000
Total	520,498	351,070	85,975	957,543
Clinton Baptist Association				
Andersonville 1st	9,000	9,542	50	18,592
Batley	392	0	0	392
Beech Grove	392	392	392	1,176
Bethel	11,666	3,791	170	15,627
Black Oak	13,029	5,860	542	19,431
Blowing Springs	0	401	100	501
Briceville 1st	500	0	0	500
Calvary (H)	2,713	0	494	3,207
Calvary (OR)	58,866	11,131	747	70,744
Central	35,509	26,646	1,085	63,240
Clear Branch	4,271	1,887	398	6,555
Clinch River	8,470	2,500	0	10,970
Clinton 1st	9,912	0	1,764	11,677
Clinton 2nd	375	0	0	375
Edgemoor	13,417	8,987	2,224	24,629
Fairview	3,010	1,937	0	4,947
Faith Promise	1,500	0	0	1,500
Farmer's Grove	0	0	61	61
Frost Bottom	188	53	250	491
Glenwood	2,808	4,146	0	6,954
Indian Bluff	0	0	0	0
Island Ford	1,506	0	0	1,506
Island Home Msrny	0	0	0	0
Lake City 1st	11,302	4,552	250	16,104
Lakeview	0	0	0	0
Laurel Branch	309	0	0	309
Laurel Grove	770	104	0	874
Longfield	0	0	0	0
Main Street	5,318	4,167	1,010	10,495
Moran	0	0	2,855	2,855
Mt Pleasant	4,468	4,672	0	9,140
New Hope	0	0	0	0
New Mtn View	188	0	225	413
New Salem	5,346	2,674	455	8,475
Norris 1st	3,722	3,691	300	7,713
North Clinton	0	0	0	0
Oak Ridge 1st	0	2,116	7,095	9,211
Oliver Springs 1st	8,327	2,709	1,808	12,844
Pine Hill	600	0	1,166	1,766
Pleasant Hill	2,185	2,382	0	4,567
Pleasant View	1,060	1,000	1,891	3,951
Poplar Creek	2,129	2,362	801	5,292
Red Hill	55	0	0	55
Riverview	0	4,449	4,399	8,848
Robertsville	11,559	4,787	2,327	18,673
Royce	9,857	2,933	757	13,547
South Clinton	10,250	3,370	1,875	15,495
Tuppertown	0	0	0	0
Union Valley Msrny	0	0	0	0
Valley View	200	100	900	1,200
Walden View Msrny	0	0	0	0
Willowbrook	0	1,466	1,466	2,932
Woodland Park	2,416	1,795	0	4,211
Zion	0	5,700	0	5,700
Total	257,192	132,304	37,858	427,354
Concord Baptist Association				
Barfield	7,122	300	0	7,422
Belle Aire	134,385	62,538	2,186	199,109
Beulah Land	100	0	0	100
Bradleys Creek	300	364	300	964
Calvary	41,103	3,068	65	44,236
Cannon Comm	715	0	0	715
Christiana 1st	793	1,055	635	2,483
CrossPoint	16,487	6,589	993	24,070

Church	CP	Designated SBC	Designated TBC	Total	Church	CP	Designated SBC	Designated TBC	Total	Church	CP	Designated SBC	Designated TBC	Total
Crossway (M'boro)	2,896	2,591	3,887	9,375	Tabernacle	100	1,000	0	1,100	Hillcrest	1,738	1,055	0	2,793
Eagleview	2,100	1,710	0	3,810	The Planting	1,718	715	0	2,433	Hillsboro 1st	1,256	25	171	1,452
Florence	1,227	0	0	1,227	Trinity	6,085	3,887	0	9,972	Huntland 1st	1,050	510	600	2,160
Flwshp	225	0	0	225	Trinity Hsp	176	0	0	176	Keith Springs	400	850	0	1,250
Fosterville	2,968	2,370	290	5,628	Willow Bend	1,812	0	0	1,812	Liberty	470	75	75	620
Giles Creek	4,573	3,243	412	8,228	Woodlawn 1st	4,976	237	150	5,363	Lincoln Heights	2,612	1,549	0	4,161
Grace	2,262	710	752	3,724	Total	482,962	202,530	27,252	712,744	Little Mt	0	0	0	0
Green Hill (M'boro)	4,647	1,516	110	6,272	Cumberland Gap Baptist Association					Manchester 1st	56,244	21,179	3,021	80,444
Greystone	2,381	447	0	2,828	Alanthus Hill	204	0	0	204	Marble Plains	2,785	747	0	3,532
Harvest View	3,700	0	0	3,700	Bethel	50	0	0	50	Maxwell	4,968	718	23	5,709
Hillview	1,940	1,825	0	3,765	Big Spring Union	0	0	0	0	Midway	3,457	0	375	3,832
Hisp	0	0	0	0	Blairs Creek	0	0	569	569	Ministry	1,703	250	0	1,953
Holly Grove	2,048	1,137	600	3,785	Brooks Mem	0	0	0	0	Monteagle 1st	2,423	1,347	0	3,770
Immanuel	5,536	2,880	360	8,776	Butcher Gap	0	0	0	0	Nuevos Horizontes	782	2,685	0	3,467
King's Chpl	0	0	0	0	Calvary	0	0	0	0	Oaklawn	4,698	2,168	2,518	9,384
Korean 1st	110	0	0	110	Carrs Chpl	3,229	1,097	651	4,976	Paynes	746	44	180	970
Lake Forest	0	0	0	0	Cave Springs	0	0	0	0	Prairie Plains	0	0	0	0
Lascassas	7,950	7,556	760	16,266	Cedar Fork	0	0	900	900	Riva Lake	2,100	1,184	991	4,275
LaVergne 1st	13,003	3,170	0	16,173	Cedar Grove	1,886	480	0	2,366	Roarks Cove	1,732	909	0	2,641
Living Springs	6,128	1,454	525	8,107	Chadwell Station	1,041	0	0	1,041	Rutledge Falls	19,461	5,861	275	25,597
Marshall Knob	340	71	0	411	Chittum Chpl	0	0	0	0	Southside	135	335	270	740
Midland	974	261	0	1,235	Clouds Mem	0	0	0	0	Spring Creek	300	160	0	460
Milton	805	290	0	1,095	Cumberland Gap 1st	250	425	0	675	Summitville 1st	142	232	0	374
Miracle	17,625	2,866	2,158	22,648	Dogwood Heights	1,289	529	0	1,818	Tracy City 1st	6,496	5,474	620	12,590
Mt Carmel	200	425	640	1,265	Duncan Chpl	0	0	0	0	Trinity	12,379	7,681	270	20,330
Mt Hermon	9,026	669	120	9,815	Fairview	0	0	0	0	Tullahoma 1st	70,651	26,406	4,380	101,437
Mt Pleasant	3,772	2,903	0	6,676	Forge Ridge	100	0	0	100	Unity	2,371	335	0	2,706
Mt Zion (Smyrna)	0	0	0	0	Gap Creek	2,271	563	658	3,491	Victory	763	500	1,500	2,763
Murfreesboro 1st	14,432	13,684	11,602	39,718	Gibson Station	0	50	0	50	Westwood	773	22	0	795
Murfreesboro 3rd	71,238	15,186	3,796	90,220	Goins Chpl	0	0	0	0	Winchester 1st	15,972	0	0	15,972
Murfreesboro Comm	704	114	54	872	Good Samaritan	237	0	0	237	Total	306,591	114,781	18,448	439,820
New Hope	871	250	0	1,121	Greer's Chpl	0	74	0	74	Dyer Baptist Association				
New Life Laotian	796	0	0	796	Harmony Msnry	0	0	0	0	Beech Grove	1,000	100	0	1,100
New Vision (Mboro)	58,188	0	0	58,188	Harrogate 1st	3,538	3,150	75	6,763	Beech Grove Vlar	644	0	0	644
Nolensville	5,336	1,110	1,300	7,746	Haynes Flat	1,035	2,588	450	4,073	Bogota	632	100	0	732
Northside	62,770	24,298	4,288	91,355	Head Of Barren	0	0	0	0	Calvary Chpl	120	364	0	484
Oaklands	912	1,179	0	2,091	Hopewell	0	600	0	600	Calvary Hill	543	360	0	903
P. I.B. (Smyrna)	0	0	0	0	Howards Quarter	0	0	0	0	Curve	3,163	669	0	3,832
Parkway	25,539	7,251	995	33,785	Indian Creek	180	1,232	304	1,716	Dyersburg 1st	43,575	32,442	2,997	79,014
Patterson	573	0	807	1,380	Liberty	0	0	0	0	Dyersburg 2nd	1,192	1,260	65	2,517
Powell's Chpl	5,874	2,080	780	8,734	Liberty Hill	84	214	0	298	Elon	0	0	0	0
River Rock	3,446	3,006	360	6,811	Little Barren	0	0	0	0	Emmaus	2,004	100	0	2,104
Riverdale	3,459	470	0	3,929	Little Creek	0	0	0	0	Enon	2,626	414	140	3,180
Rock Springs	5,720	428	0	6,148	Little Mulberry Msnry	2,378	1,462	0	3,840	Evansville	483	100	0	583
Scenic Drive	1,848	1,057	0	2,905	Little Sycamore	0	0	0	0	Fairview	1,426	90	33	1,549
Smyrna 1st	86,094	9,015	1,644	96,753	Little Valley	0	0	0	0	Finley	2,175	2,138	0	4,313
Solid Rock (Mboro)	465	500	0	965	Lone Holly	0	0	0	0	Fort Hudson	1,200	1,663	0	2,863
Southeast	30,177	2,155	105	32,437	M C M	0	0	0	0	Fowlkes	1,548	764	295	2,607
Stonebrook	2,294	0	0	2,294	Meyer Grove	0	0	0	0	Gates	3,212	1,404	0	4,616
Stones River	29,783	3,437	255	33,475	Midway	5,636	2,520	0	8,156	Halls 1st	13,125	3,025	75	16,225
Taylor's Chpl	0	500	0	500	Mt Gilead	0	0	0	0	Halls Westside	6,727	1,857	4,304	12,888
Unity	1,045	0	140	1,185	Mt Pleasant	0	0	0	0	Harmony	1,644	496	0	2,140
Vessels of Mercy	3,019	0	0	3,019	Mt Zion	2,364	600	300	3,264	Harvest	1,051	283	45	1,379
Walter Hill 1st	7,750	2,952	3,122	13,824	New Beginning	1,768	1,683	1,230	4,681	Hawthorne	1,553	680	0	2,233
Ward's Grove	2,615	1,056	125	3,797	New Hope	0	0	0	0	Hillcrest	32,106	7,463	0	39,569
Westwood	9,819	8,663	1,216	19,698	New Salem	132	600	500	1,232	Lenox	150	0	550	800
Woodbury Road	1,170	640	140	1,950	New Tazewell 1st	14,225	7,079	655	21,959	Macedonia	8,053	12,473	450	20,976
Total	733,379	211,038	45,524	989,941	Oak Grove	0	100	0	100	Marys Chpl	11,016	3,200	0	14,216
Copper Basin Baptist Association					Pine Grove	0	0	0	0	McCullough Chpl	1,998	455	915	2,968
Bethlehem	0	355	0	355	Pleasant View	990	0	2,295	3,285	Miston	0	0	0	0
Coletown	2,431	1,600	0	4,031	Poplar Grove	0	0	0	0	Mt Tirzah	1,069	788	0	1,857
Isabella	435	245	0	680	Pump Hollow	0	0	0	0	Mt Vernon	5,164	390	0	5,554
Maple Grove	0	275	0	275	Pump Springs	20,859	2,878	0	23,737	New Hope Msn	0	0	0	0
Mine City	6,775	2,005	1,975	10,755	Raven Hill	0	0	0	0	New Mitchell Grove	2,045	0	0	2,045
Mt Harmony	0	175	175	350	Red Hill	0	854	0	854	Newbern 1st	18,133	5,839	1,106	25,078
Mt Vernon	0	0	0	0	Riley Mem	0	25	50	75	Parrish Chpl	1,393	0	0	1,393
Mt Zion	1,291	660	0	1,951	Riverside	0	0	100	100	RoEllen	2,603	561	0	3,164
New Zion	2,656	2,000	0	4,656	Shady Grove	0	0	0	0	Southside	4,521	2,577	0	7,098
Pleasant Hill	2,119	578	200	2,897	Shawnee	5,300	3,622	0	8,922	Springhill	2,442	40	0	2,482
Turtletown Msnry	0	0	0	0	Speedwell Academy	0	0	0	0	Three Oaks	0	0	0	0
Zion Hill	2,649	1,285	0	3,934	Springdale	0	0	83	83	Trimble 1st	3,327	2,702	35	6,064
Total	18,357	9,178	2,350	29,885	Springfield	0	200	0	200	Westside	139	0	0	139
Crockett County Baptist Association					Straight Creek	0	0	0	0	Williams Chpl	425	100	0	525
Alamo 1st	16,478	18,477	0	34,955	Sugar Grove	0	0	0	0	Woodville	0	0	0	0
Barkers Chpl	847	946	0	1,793	Summey Bridge	0	0	0	0	Zion Hill	2,694	2,727	300	5,721
Bells 1st	15,596	30,367	3,245	49,208	Sunrise	0	0	0	0	Total	186,920	87,624	11,304	285,848
Cairo	2,976	1,104	0	4,080	Tazewell	3,990	100	0	4,090	East Tennessee Baptist Association				
Cross Roads	2,784	3,483	0	6,267	Town Creek	0	0	0	0	Agape	0	95	0	95
Friendship	3,499	1,224	280	5,003	Underwood Grove	1,269	1,573	700	3,543	Bethel	3,871	3,672	0	7,543
Gadsden 1st	5,274	7,508	0	12,782	Union Chpl	0	0	414	414	Brown's	525	0	0	525
Johnson Grove	450	870	0	1,320	Walnut Hill	946	200	300	1,446	Calvary	0	0	0	0
Mauzy City 1st	6,022	2,470	0	8,492	Wolfenbarger Chpl	0	478	0	478	Carson Springs	736	339	0	1,075
Midway	747	300	0	1,047	Yongs	0	0	0	0	Cave Hill	2,786	5,944	0	8,730
Nuevo Desafio	140	0	0	140	Total	75,251	34,978	10,233	120,462	Centerview Msnry	0	0	0	0
Providence	647	6,175	0	6,822	Cumberland Plateau Baptist Association					Comerstone	1,509	430	0	1,939
South Fork	1,516	1,255	874	3,645	Bethlehem	7,575	2,367	0	9,942	Denton	1,027	344	0	1,371
Three Way	0	184	0	184	Breckenridge Lake Comm	130	0	0	130	Dutch Bottoms	0	0	0	0
Walnut Hill	3,577	3,500	0	7,077	Calvary	717	219	0	936	English Creek	6,696	1,103	500	8,300
Total	60,553	77,863	4,399	142,815	Central	40,134	27,099	5,394	72,627	Forest Hill	0	0	0	0
Cumberland Baptist Association					Clear Creek	0	0	0	0	French Broad	0	0	0	0
1st Canaan	1,117	1,196	100	2,413	Crossville 1st	12,623	10,110	10,610	33,343	Holder's Grove	0	0	0	0
24	7,427	0	0	7,427	Cumberland Flwshp	1,848	932	154	2,934	Lincoln Ave	14,000	10,541	1,483	26,024
Alva	0	0	0	0	Cumberland Homesteads	13,225	0	197	13,422	Manning Chpl	1,642	700	462	2,804
Bethel	5,015	850	0	5,865	Cumberland View	50	0	0	50	New Prospect	0	0	0	0
Blooming Grove	2,242	300	0	2,542	Emmanuel	1,142	329	0	1,471	Newport 1st	11,084	6,419	4,475	22,000
Charlotte 1st	1,837	1,792	246	3,875	Fairfield Glade 1st</									

Church	CP	Designated SBC	Designated TBC	Total
Grove	100	1,100	400	1,600
ville 1st	46,890	20,968	0	67,858
Comm	1,036	0	0	1,036
on	550	238	0	788
88,797	51,418	6,433	146,649	
Gibson County Baptist Association				
15,088	10,715	2,336	28,139	
2,806	500	0	3,306	
2,184	2,429	0	4,613	
180	0	0	180	
5,673	818	800	7,291	
5,987	891	679	7,558	
7,560	2,031	0	9,591	
4,132	800	250	5,182	
2,573	1,299	0	3,872	
210	300	0	510	
18,014	8,701	0	26,715	
Grove	754	204	65	1,023
1,569	293	0	1,863	
18,807	8,132	100	27,039	
1,613	1,175	0	2,788	
4,781	4,039	275	9,094	
0	0	0	0	
3,672	241	0	3,913	
1,918	1,487	0	3,405	
0	300	0	300	
89,320	36,373	6,525	132,218	
1,959	200	200	2,359	
394	162	0	556	
200	108	0	308	
19,145	3,813	2,000	24,958	
800	121	371	1,292	
500	235	0	735	
500	20	0	520	
2,103	1,007	0	3,110	
644	0	0	644	
13,177	4,322	276	17,775	
1,030	260	57	1,347	
63,024	19,943	4,492	87,460	
1,291	1,272	297	2,860	
7,105	8,801	0	15,906	
6,963	2,760	705	10,428	
5,904	5,655	3,804	15,363	
0	0	0	0	
9,186	15,491	333	25,009	
990	952	365	2,307	
1,444	65	257	1,766	
241	73	0	314	
3,003	2,282	30	5,315	
0	0	0	0	
7,371	3,506	676	11,553	
10,047	5,287	506	15,840	
1,182	2,597	1,000	4,779	
0	0	0	0	
2,308	891	0	3,199	
35,225	6,496	3,469	45,190	
750	1,029	0	1,779	
206	140	0	346	
16,169	10,854	0	27,024	
399,704	179,069	29,869	608,642	
Giles County Baptist Association				
623	1,010	0	1,633	
0	0	0	0	
0	0	0	0	
670	162	0	832	
0	100	0	100	
2,452	777	223	3,452	
979	461	0	1,440	
446	274	0	720	
300	0	429	729	
3,052	2,040	438	5,530	
180	287	0	467	
5,136	2,912	0	8,048	
0	678	0	678	
24,050	8,991	1,000	34,041	
0	324	257	581	
630	200	0	830	
0	0	1,472	1,472	
1,913	1,250	0	3,163	
532	300	0	832	
2,976	1,414	0	4,390	
0	1,200	0	1,200	
397	125	0	522	
1,200	328	0	1,528	
600	0	0	600	
175	0	700	875	
46,310	22,833	4,520	73,663	
Grainger Baptist Association				
0	1,511	0	1,511	
0	0	0	0	
3,099	1,500	2	4,601	
2,840	671	258	3,769	
3,762	1,221	0	4,983	
17,082	5,633	76	22,791	
2,593	2,425	191	5,209	
0	509	0	509	
400	452	0	852	
1,676	3,677	0	5,353	
127	91	0	218	
1,964	1,601	2,138	5,703	
5,412	3,286	0	8,698	
97	0	0	97	
2,258	852	0	3,110	
674	562	0	1,236	
1,165	2,038	0	3,203	
5,811	3,702	1,000	10,513	
0	317	360	677	
943	885	0	1,828	
3,161	3,419	0	6,580	
2,300	1,932	767	4,998	
268	600	0	868	
0	0	0	0	
0	0	0	0	
14,560	5,168	0	19,728	
0	0	0	0	
0	0	0	0	
0	0	0	0	
0	0	0	0	
366	1,335	0	1,701	
1,512	613	0	2,125	
24	351	0	375	
1,111	1,104	100	2,315	
73,204	45,453	4,892	123,549	
Hamilton County Baptist Association				
375	0	0	375	
2,912	485	0	3,397	
5,383	10,769	62	16,214	
391	504	0	895	
1,054	0	0	1,054	
71,804	40,655	6,601	119,060	
4,200	10,184	100	14,484	

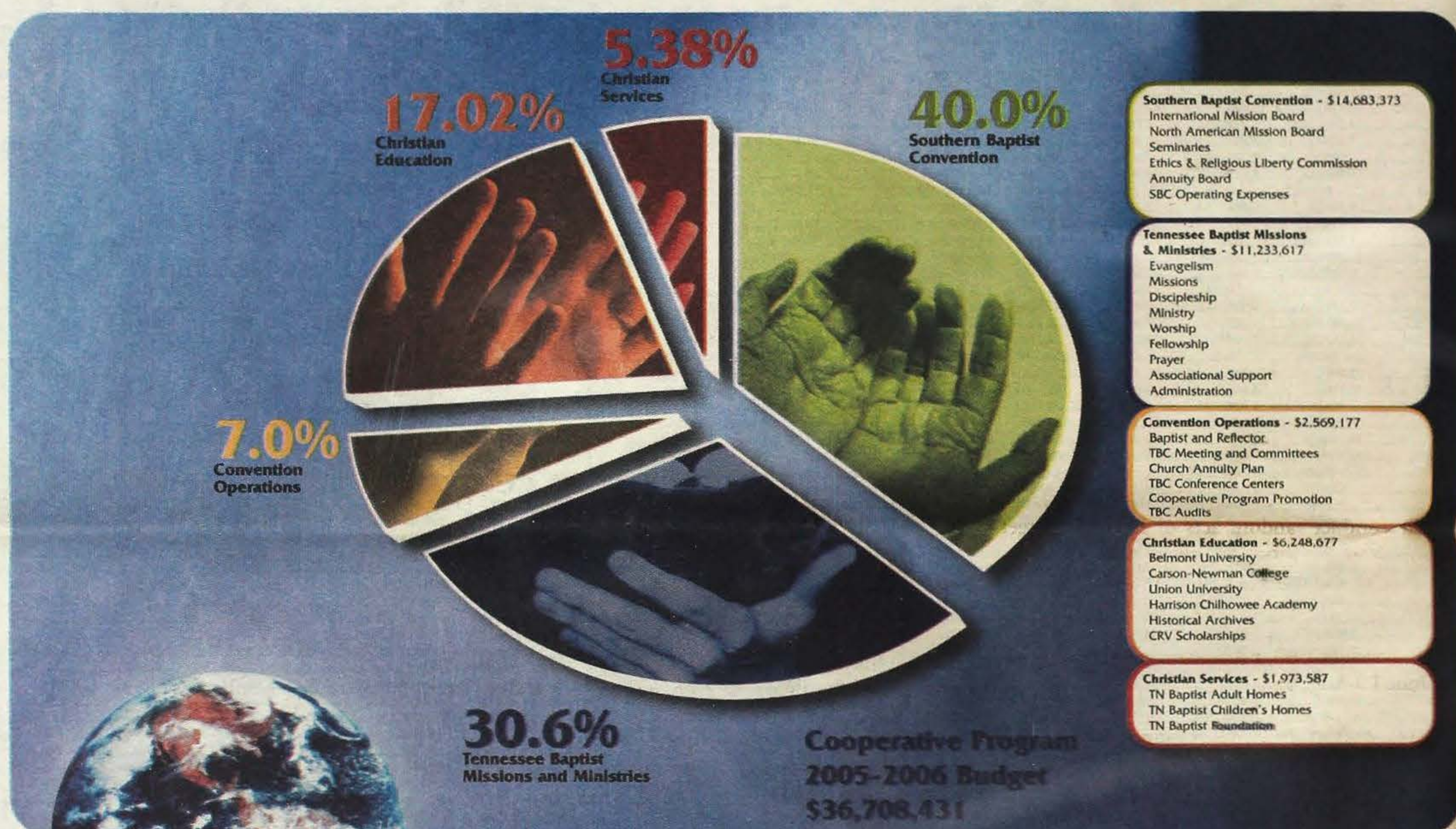
Church	CP	Designated SBC	Designated TBC	Total
Brainerd	107,641	132,257	5,610	245,508
Brainerd Hills	69,999	36,627	0	106,626
Cambodian Brainerd	194	0	56	250
Central	10,000	15,637	500	26,137
Centro de Recurso Hispano	0	0	0	0
Chamberlain Mem	395	2,096	20	2,511
Charity	0	0	0	0
Chattanooga 1st	9,659	9,811	2,505	21,975
Chattanooga 2nd	1,767	573	970	3,310
Christway Comm	7,449	13,499	0	20,947
Clifton Hill	600	10	235	845
Comm Msny	0	0	0	0
Concord	45,043	43,622	5,084	93,749
Covenant	2,400	3,303	185	5,888
Cross Roads	978	685	0	1,663
Crosspoint Comm	1,092	539	126	1,757
Dallas Bay	17,250	11,362	93	28,705
East Brainerd	3,190	832	0	4,022
East Ridge	40,025	23,157	3,542	66,724
Eastwood	0	0	0	0
Edwards Point	0	0	0	0
English Ave	0	0	0	0
Fairview	3,174	1,157	210	4,541
Faith United	0	0	0	0
Falling Water	17,964	3,351	0	21,315
Falling Water Tabernacle	0	0	0	0
Frawley	3,866	506	0	4,372
Grace Ave	0	0	0	0
Greenwood	0	0	0	0
Guild 1st	0	0	250	250
Hickory Valley	1,767	3,567	0	5,334
High Point	0	0	0	0
Hilltop	0	0	0	0
Hixson 1st	26,001	43,829	7,013	76,843
Johns Mem	0	0	0	0
King's Point	0	205	0	205
Kingwood	0	0	0	0
Korean Chattanooga	1,478	105	0	1,583
Lakeway	0	0	300	300
Lookout Mtn	0	0	0	0
Lookout Valley	15,197	12,253	684	28,134
Love Flwshp	2,500	283	0	2,783
Maple Grove	5,958	5,960	0	11,918
Meadowview	10,380	888	587	11,855
Memorial	462	5,008	0	5,469
Middle Valley	6,868	6,467	0	13,336
Morris Hill	37,991	17,749	300	56,040
Msn Oaks	0	0	0	0
Mt Carmel	11,886	10,629	0	22,515
Mtn Creek	0	557	3,059	3,616
New Bethel	2,339	2,311	0	4,650
New Liberty	1,694	0	0	1,694
New Salem	16,603	3,895	695	21,193
New Shepherd Hill	0	0	384	384
New Union	1,002	500	627	2,129
North Red Bank	960	0	0	960
Northside	1,550	994	44	2,589
Oak Grove	770	25	0	795
Oak Street	4,337	1,278	2,205	7,820
Oakwood	23,276	8,470	584	32,330
One Accord Comm	1,861	375	75	2,311
Ooltewah	17,572	10,583	3,233	31,388
P. L. Red Bank	450	342	1,382	2,174
Philippine	0	0	0	0
Pilgrim's Rest	604	0	300	904
Pleasant Grove	11,266	1,725	50	13,041
Providence	3,418	0	0	3,418
Rehoboth	0	2,033	1,512	3,544
Red Bank	138,759	120,661	4,824	264,244
Ridgedale	103,569	94,234	3,855	201,659
Ridgeview	0	1,067	1,550	2,617
River City Comm	0	0	0	0
Riverside	1,000	862	0	1,862
Saint Elmo Ave	5,271	0	0	5,271
Signal Mtn	742	5,482	10	6,234
Silverdale	155,720	56,500	1,410	213,630
Soddy Daisy 1st	25,748	13,875	430	40,053
South Seminole	30,681	6,416	70	37,166
South Soddy	878	55	0	933
Spring Creek Road	14,119	10,675	1,780	26,574
Standifer Gap	0	0	0	0
Stuart Heights	57,214	27,075	1,835	86,124
Temple	0	0	0	0
Timesville Ave	0	0	250	250
Tremont	1,399	720	30	2,149
United Comm	150	658	0	808
Westview	600	614	0	1,214
White Oak	20,420	8,018	1,319	29,756
Whiteside	248	90	0	338
Woodland Heights	966	210	0	1,176
Woodland Park	2,502	105	0	2,607
Total	1,196,981	848,968	66,543	2,112,493
Hardeman County Baptist Association				
Bethlehem	0	0	0	0
Bolivar 1st	21,133	15,159	2,772	39,064
Brins Chpl	0	0	125	125
Center Point	432	76	0	508
Cloverport	1,292	1,977	676	3,945
Dixie Hills	5,725	2,332	745	8,802
Ebenezer	2,400	1,000	0	3,400
Essary Springs	315	714	47	1,077
Grace	0	0	0	0
Grand Junction 1st	13,750	11,157	21,562	46,469
Hatchie	839	738	0	1,577
Hebron	2,156	565	150	2,871
Hickory Valley	4,010	875	2,311	7,197
Hornsby	4,814	433	0	5,247
Middleboro	0	0	0	0
Middleton 1st	15,084	5,127	3,010	23,221
Midway	1,250	775	0	2,025
New Bethel	1,089	521	0	1,611
New Union	5,076	1,319	1,019	7,414
Parrans Chpl	2,243	0	1,100	3,343
Piney Grove	2,015	500	0	2,515
Pleasant Grove	0	0	0	0
Pocahontas 1st	236	0	0	236
Porters Creek	1,200	1,865	0	3,065
Rocky Springs	0	0	0	0
Saulsby	1,811	400	0	2,211
Shandy	1,335	262	0	1,597
Silerton	1,331	0	0	1,331
Toone	4,831	982	15	5,828
Trinity	2,100	536	0	2,636
Vida Abundante	425	1,767	0	2,192
Walnut Grove	841	446	0	1,287
West Mem	8,629	3,532	0	12,162
Whiteville 1st	3,750	5,321	35	9,106
Total	110,114	58,379	33,568	202,060
Haywood Baptist Association				
Allen	6,000	11,720	852	18,572
Antioch	750	1,000	0	1,750

Church	CP	Designated SBC	Designated TBC	Total
Brownsville	42,500	48,518	510	91,528
Calvary	2,596	1,066	0	3,662
Cristo Rey	0	795	30	825
Harmony	5,833	2,800	413	9,046
Holly Grove (Bells)	6,992	4,227	1,821	13,040
New Vision Comm	4,968	4,390	186	9,545
Poplar Corner	1,883	6,063	378	8,324
Shaws Chpl	300	0	0	300
Stanton	2,383	3,692	0	6,076
Woodland	9,796	4,477	1,714	15,987
Zion	8,824	4,796	0	13,621
Total	92,826	93,546	5,902	192,274
Hiwassee Baptist Association				
Concord Msrny	1,024	0	0	1,024
Hiwassee	556	0	185	741
Old Pond Hill	296	415	114	826
Peakland	300	193	32	525
Pisgah	1,906	2,373	0	4,279
Ten Mile	4,143	1,324	320	5,787
Total	8,225	4,305	652	13,182
Holston Baptist Association				
Antioch	6,651	8,010	1,954	16,615
Assembly	486	0	0	486
Baileyton 1st	994	2,390	0	3,384
Believers	0	0	0	0
Bethany	358	368	0	725
Bethel	561	37	0	598
Bethel View	8,405	5,712	0	14,117
Beulah	16,438	4,295	0	20,733
Blountville 1st	16,478	8,038	980	25,496
Bluff City	0	3,713	0	3,713
Bluff City 1st	14,608	4,401	1,206	20,215
Boone Trail	12,793	15,549	0	28,342
Boones Creek	820	4,732	1,674	7,226
Bowmantown	6,831	3,761	0	10,593
Calvary (B)	1,121	409	0	1,530
Calvary (JC)	672	250	0	922
Calvary (E)	19,996	48,194	8,505	76,694
Calvary (G)	3,500	4,100	2,300	9,900
Calvary Mem	0	0	0	0
Central (E)	1,974	2,192	0	4,166
Central (JC)	77,221	43,061	29,343	149,625
Cherokee	3,642	3,343	0	6,985
Cherokee Mtn	0	0	0	0
Cherry Grove	9,029	4,368	0	13,397
Chinquapin Grove	6,000	4,000	1,305	11,305
Clark Street	4,200	1,795	907	6,902
Clear Branch	400	6,552	250	7,202
Clifton View	897	918	673	2,489
Crosspointe Comm	1,300	0	0	1,300
East Watauga Ave	0	0	0	0
Enon	716	811	0	1,528
Erwin 1st	10,811	16,349	3,025	30,185
Faith Flwshp	0	0	0	0
Fall Branch 1st	8,683	5,812	537	15,031
Flag Pond	1,608	275	0	1,883
Fordtown	10,829	5,812	20	16,660
Freedom Road	0	0	0	0
Friendship Chpl	5,494	662	0	6,156
Gateway Comm	0	0	0	0
Grace	1,528	846	426	2,801
Green Pine	598	420	600	1,618
Greene Hills	1,535	430	0	1,965
Greenelawn	1,010	2,170	40	3,220
Greenville 1st	68,277	45,163	2,521	115,960
Greenwood	2,441	523	0	2,964
Harmony	8,974	4,285	0	13,260
Heritage	4,694	7,092	1,133	12,919
Higgins Chpl	0	0	0	0
Holston Deaf	0	0	0	0
Holston Valley	0	0	0	0
Hulen	582	156	144	881
LNueva Esperanza	78	113	0	191
Jonesborough 1st	7,960	4,525	1,942	14,427
Journey Flwshp	0	0	0	0
King Springs	60	307	0	367
Liberty	500	1,806	0	2,306
Lovelace	1,882	674	128	2,683
Midway	2,927	2,207	0	5,134
Mt Zion	7,820	2,034	0	9,854
Mtn View (G)	0	0	0	0
Mtn View (JC)	14,008	11,660	241	25,909
Muddy Creek	0	0	0	0
New Lebanon Msrny	1,000	737	500	2,237
New Life	0	0	0	0
New Salem	3,215	1,210	0	4,425
New Victory	8,400	1,314	0	9,714
Ninth Street	17,821	11,753	130	29,704
Nolichucky	896	150	0	1,046
North Johnson City	6,000	1,646	978	8,624
NorthPointe Comm	0	0	0	0
Oak Dale Msrny	0	0	0	0
Oak Glen	1,510	100	806	2,416
Oak Grove	11,769	2,668	1,215	15,652
Oak Hill	2,933	3,223	2,051	8,207
Omega	300	0	0	300
Pinecrest	8,094	3,920	80	12,094
Piney Flats 1st	891	6,812	1,715	9,418
Pleasant Grove Msrny	3,260	300	0	3,560
River Bend	1,319	2,636	0	3,956
Roan Hill	1,310	228	170	1,708
Second Ave Msrny	0	0	0	0
Shallow Ford	3,602	1,510	830	5,942
Skyline Heights	5,212	3,980	994	10,186
Snow Mem	0	1,725	295	2,020
Solomon's Temple Msrny	0	1	744	744
Southside	7,574	1,988	0	9,562
Southwestern	39,020	7,607	550	47,177
Sulphur Springs	9,662	3,280	363	13,305
Sunrise	1,541	293	0	1,833
Sunset Village	1,321	75	50	1,446
Telford Msrny	740	275	0	1,015
Tennessee Ave	5,538	0	2,808	8,347
The Gathering	1,238	0	0	1,238
Towering Oaks	54,580	32,100	5,875	92,555
Trinity	24,264	8,793	3,574	36,631
Tusculum	9,512	3,174	653	13,339
Unaka Ave	13,566	1,844	515	15,925
Unicoi	2,528	500	500	3,528
University Parkway	3,448	6,871	0	10,319
Valley Hills	0	0	0	0
Virginia Ave	4,263	4,333	826	9,422
Volunteer	1,891	1,248	0	3,139
West Hills (B)	300	1,618	0	1,918
West Hills (J)	1,040	345	0	1,385
Westerly Heights	0	383	0	383
Woodlawn	2,101	1,678	884	4,663
Total	640,051	414,637	86,959	1,141,647
Holston Valley Baptist Association				
Bass Chpl	797	221	0	1,018
Beech Creek	0	60	0	60



Church Health Matters

"Building healthy churches empowered by the presence of God."



Cooperative Program Helps Tennessee Baptists Reach The World

By Gary Rickman

Since 1925 Tennessee Baptist churches have partnered with Southern Baptists through the Cooperative Program to reach spiritually lost people in communities locally and around the world.

A prayerful commitment of bringing lost souls to knowledge of Christ convicts Tennessee Baptists to give through the Cooperative Program.

In this week's *Baptist and Reflector*, you will find your church's financial support through one of the most organized and aggressive mission efforts known today.

Each church has given voluntarily through the Cooperative Program, and from all of us whose ministries have been equipped by your generous gift we say, "Thank you!" By partnering with each Tennessee Baptist, we are reaching people for Christ in every walk of life and in all the earth inviting them to experience God through His son Jesus, the Christ. Through the Cooperative Program, churches continue to accomplish together what no one congregation could accomplish alone.

The chart above highlights in broad categories what your church is accomplishing through its support of the Cooperative Program.

For more information about the Cooperative Program, contact Gary Rickman
(800)558-2090, ext. 2020

Partnership Mission Opportunities

Project Location	Project ID	Project Description	Dates
Rio de Janeiro	RI-06-15	Teams to do personal evangelism, home visitation, music, and worship services.	Sept. 25-Oct. 3
Rio de Janeiro	RI-06-18	Doctors, dentists, pharmacists, nurses, evangelism people, helpers needed for medical clinics.	Oct. 20-29
Des Moines, Iowa	IA-06-46	Team to do minor repairs on church, landscaping, build retaining wall. VBS can also be done.	open
Des Moines, Iowa	IA-06-28	Team to conduct VBS.	July 2-8, July 16-22, July 23-29
Des Moines, Iowa	IA-06-47	Team to lead VBS.	July 31-Aug. 4
Des Moines, Iowa	IA-06-18	Team to do survey work, BYBC, block parties, sports, prayer walking, etc.	open
Des Moines, Iowa	IA-06-34	Team to insulate and drywall basement. Repair subbase flooring in bathroom.	June-August
Des Moines, Iowa	IA-06-35	Team to conduct two BYBC in different communities.	June-August
Des Moines, Iowa	IA-06-03	Adopt an area to help start a church.	open
Des Moines, Iowa	IA-06-40	Team to lead worship and recreation at children's camp.	July 31-Aug. 4
Des Moines, Iowa	IA-06-48	Team to build addition (40X40) onto church.	ASAP
Des Moines, Montana	MT-06-36	Team to conduct basketball sports camp for Belfry and surrounding community.	June
Sandy, Montana	MT-06-20	Team to construct entryway onto existing building. Team would need to provide funds.	after July 17
Des Moines, Montana	MT-06-15	Need a couple or single male to lead small group, help in main weekly meetings, work with international students at college BSC. This will be a semester position.	ASAP
Des Moines, Montana	MT-06-35	Team to do construction (mortar, roofing, painting, etc.) on church building. Other opportunities are also available.	open
Des Moines, Montana	MT-06-38	Two-three people are needed to speak at Leadership Retreat at Montana Tech Baptist Student Union.	open
Des Moines, Montana	MT-06-40	Team to conduct VBS.	August
Des Moines, Montana	MT-06-34	Team to conduct VBS for 4th-7th graders.	open
Des Moines, Montana	MT-06-14	Team to remodel youth center and fellowship hall. Team would need to help with remodeling (approx. \$1500).	open

Tennessee Projects:

- Teams to conduct random acts of kindness, street ministries and similar activities at multi-housing areas, house, and local businesses. Dates: weekly June 19-Aug. 5.
- Teams to conduct VBS, Bible clubs, and day camps. Dates: weekly June 19-Aug. 5.
- Teams to conduct evangelism, survey work, and prayer walking. Dates: weekly June 19-Aug. 5.
- Teams to do prayer hikes, river hospitality, trail ministry, beach ministries, and provide family programs and worship services in and around Ocoee River and Crooke National Forest. Dates: weekly June 19-Aug. 5.
- College aged student missionaries needed to lead mission teams. Dates: June 19-Aug. 12.
- Teams to do evangelism through home repair for low-income families. Also opportunities for evening block parties. Dates: weekly June 19-July 29.
- Team to do building repair, plumbing, carpeting, painting. Dates: open
- Teams to conduct BYBC in local state park and provide family night service one evening. Dates: June 19-Aug. 5.
- Teams that are experienced in day camp or staff on-site day camp four mornings a week. Five to six grade. Dates: June -August.
- City-Teams to do home repair for low-income families in public housing. Clothing, food, and furniture can also be done. Dates: year round.
- City-Teams to conduct VBS for children ages 3-12. Dates: weekly June 19-July 29.

- Knoxville-Teams to conduct VBS in low rent housing area. Can also do sport camps, block parties, etc. Dates: June -July.
 - Maryville-Teams to do local home repair projects in and around Blount County. Dates: June 19-July 28.
 - Philadelphia-Teams to do BYBC Monday-Wednesday. Carnival and family evening program on Thursday. Dates: Summer.
 - Rogersville-Teams to do food distribution, home repair, senior programs, children events, etc. Dates: open.
 - Newport-Team to do underpinning of two modular office buildings. Dates: ASAP.
 - Townsend-Teams of 10-15 to provide morning day-camps/BYBC for children and casual evening family programs in campgrounds. Dates: June 19-20 and July 3-7.
- West Tennessee Projects:
- Brighton-Multi-purpose building construction of a steel frame and steel roof. Help is needed from ground up. Dates: June 19-Nov. 11.
 - Memphis-Teams to provide morning Bible clubs for neighborhood children and afternoon community service projects for inner-city families. Dates: weekly June 19-Aug. 4.
- For information about these projects, contact Kim Margrave at (800) 558-2089 ext. 2021 or e-mail kmargrave@tnbaptist.org.

Canadian Southern Baptist Seminary Potential Teaching Opportunities

- January 2007
(1 week intensives, Jan. 8-12)
Elective
 - Spring 2007
(semester, mid-Jan. - beg. of May)
Intro to Christian Thought (college)
Writing & Research (college)
 - Summer 2007
(1 week intensives, mid-May - mid-June)
Electives
Preaching I (seminary)
 - Fall 2007
(semester, end of Aug. - mid-Dec.)
Youth Education (seminary)
Baptist History & Beliefs (college)
Cross Cultural Evangelism (college)
 - January 2008
(1 week intensives, Jan. 8-12)
Elective
Worship (seminary)
 - Spring 2008
(semester, mid-Jan. - beg. of May)
The Teaching Church (college)
Music & Worship (college)
Classics of Christian Literature (college)
History of Western Civilization (college)
Music Appreciation (college)
Missiology (seminary)
 - Summer 2008
(1 week intensives, mid-May - mid-June)
Electives
Preaching II (seminary)
- For information about these teaching opportunities and a list of the required qualifications, contact Kim Margrave at (800) 558-2089 ext. 2021 or e-mail kmargrave@tnbaptist.org.

Church	CP	Designated SBC	Designated TBC	Total
Belmont	900	158	0	1,058
Bentley's Chpl	180	815	0	995
Bethel	1,433	0	457	1,889
Big Creek	300	2,092	0	2,392
Burem	81	682	942	1,706
Caney Creek Msny	2,705	778	0	3,483
Cave Springs	782	0	0	782
Choptack	1,753	2,239	0	3,992
Christians Bend	0	0	0	0
Church Hill 1st	25,000	35,117	1,172	61,289
Compromise	0	0	200	200
Cool Branch	0	0	0	0
Duck Creek	0	0	0	0
East Rogersville	28,324	10,943	4,000	43,267
Elm Springs Msny	150	300	0	450
Fishers Creek	0	0	0	0
Gills Chpl	3,688	7,076	0	10,765
Henards Chpl	18,153	7,500	233	25,886
Hickory Cove	10,030	4,566	0	14,596
Holston Valley	0	0	4,919	4,919
Howes Chpl	513	2,087	0	2,601
Independence	0	0	0	0
Indian Ridge	1,544	2,047	270	3,861
Keplar	0	0	0	0
Kyles Ford	413	0	690	1,103
Lone Oak	120	0	240	360
Looneys Chpl	844	425	281	1,550
Lyons Park Msny	200	0	200	400
Maple Hill	1,086	0	0	1,086
McCloud	0	194	0	194
McKinney's Chpl	0	200	350	550
McPheeters Bend	1,929	4,019	0	5,948
Mooreburg	830	400	400	1,630
Morrisetts	1,500	3,750	0	5,250
Mt Pleasant	0	0	0	0
New Hope	0	290	191	481
North Fork	1,026	0	0	1,026
Oak Grove Msny	37,995	21,842	2,705	62,542
Persia	16,564	7,207	0	23,771
Pleasant Hill	0	0	0	0
Prices Grove Msny	503	0	0	503
Ridgeview	13,336	7,774	60	21,171
Rogersville 1st	28,526	24,378	4,333	57,238
Shady Grove	0	500	0	500
Shepard's Chpl	823	6,061	3,681	10,565
Sneedville 1st	12,064	4,568	661	17,293
Speedwell	0	250	0	250
Surgoinsville 1st	4,136	5,778	1,205	11,119
Tar Pine Valley	0	0	0	0
Tunnell Hill	3,433	620	0	4,053
Valley View	0	1,069	442	1,511
War Creek	291	176	0	467
West View	2,244	200	0	2,444
Total	224,197	166,382	27,634	418,213
<i>Indian Creek Baptist Association</i>				
Bethlehem	858	4,500	0	5,358
Calvary	0	0	0	0
Calvary (W)	2,030	1,384	0	3,414
Cedar Grove	0	1,000	0	1,000
Clifton 1st	1,342	1,124	736	3,202
Collinwood 1st	853	0	0	853
Eastview	100	0	0	100
Friendship	219	40	20	279
Grace	202	0	211	413
Green River	13,645	4,836	200	18,681
Houston	754	1,079	0	1,833
Kelleys Chpl	5,000	5,900	0	10,900
Leatherwood	150	300	0	450
Lutts	264	0	0	264
Memorial	0	0	0	0
New Life	382	0	0	382
Oak Grove	0	0	0	0
Philadelphia	3,008	8,390	700	12,098
Rays Chpl	924	500	0	1,424
Upper Green River	328	200	0	528
Waynesboro 1st	3,941	605	729	5,275
Zion	1,705	815	0	2,520
Total	35,705	30,673	2,596	68,974
<i>Jefferson County Baptist Association</i>				
Antioch	0	1,500	0	1,500
Beaver Creek	1,809	6,862	0	8,671
Bethel Msn	0	612	0	612
Buffalo Grove	1,552	800	130	2,482
Central Heights	2,089	1,420	5	3,514
Dandridge 1st	39,172	59,177	12,172	110,520
Deep Springs	2,541	3,518	0	6,059
Dumplin	1,300	4,478	0	5,778
East Ridge	744	330	325	1,399
Emmanuel	1,077	678	361	2,116
Flat Gap	1,199	128	0	1,327
French Broad	4,000	8,633	455	13,088
Friendsview	0	0	0	0
Good Hope	316	791	395	1,502
Hilltop	802	0	0	802
Holston Mem	1,847	2,627	1,000	5,474
Jefferson City 1st	1,129	2,678	19,834	23,641
Jefferson County	0	0	436	436
Mansfield Gap	0	0	0	0
Mill Springs	8,057	16,155	30	24,241
Mtn View	0	535	0	535
Mullins Chpl	0	0	0	0
Nances Grove	0	2,480	45	2,525
New Heights	1,525	550	0	2,075
New Hope	1,281	812	0	2,093
New Market	18,758	11,618	0	30,376
Nina	1,953	4,058	0	6,011
Oak Hills	500	650	0	1,150
Piedmont	417	494	691	1,602
Pleasant Grove	0	1,248	0	1,248
Pleasant Grove Piney	6,194	6,980	1,306	14,480
Rocky Valley	0	1,596	719	2,316
Strawberry Plains 1st	5,298	3,890	50	9,238
Swanns Chpl	2,490	5,407	600	8,497
Talbott	0	3,365	3,271	6,637
White Pine 1st	7,920	11,039	915	19,874
Total	113,971	165,106	42,741	321,818
<i>Judson Baptist Association</i>				
Burns	150	150	0	300
Eastside	3,606	3,886	132	7,624
Faith	1,026	73	610	1,709
Liberty Msny	120	0	0	120
Maple Grove	600	0	0	600
Msny Ridge	420	244	0	664
Mt Zion	25	63	0	88
New Hope	2,400	1,000	1,150	4,550
Old New Hope	208	900	225	1,333
Parkers Creek	1,050	0	0	1,050
Rolling Hills	907	70	167	1,145
White Bluff	600	939	0	1,539
Total	11,112	7,325	2,284	20,721

Church	CP	Designated SBC	Designated TBC	Total
<i>Knox County Baptist Association</i>				
1st Korean	530	30	0	560
Adventure	836	0	0	836
Alice Bell	14,189	18,301	3,230	35,720
Arlington	27,885	34,323	2,505	64,713
Atkins	1,098	4,669	748	6,514
Ball Camp	288	75	0	363
Basswood	0	0	0	0
Beaumont Ave	90	641	0	731
Beaver Dam	82,660	23,337	4,320	110,317
Belmont Heights	5,295	3,142	150	8,587
Bethany Msny	0	0	0	0
Black Oak Heights	19,401	5,000	0	24,401
Blount	0	0	0	0
Bluegrass 1st	0	2,841	0	2,841
Bon View	0	0	0	0
Branville	150	750	0	900
Bridgewater	6,000	0	600	6,600
Broadway	445	1,454	1,142	3,040
Buffat Heights	10,027	11,159	0	21,186
Burnetts Creek	0	0	0	0
Callahan Road	1,354	2,033	0	3,387
Calvary	17,500	23,740	0	41,240
Cedar Bluff	600	0	0	600
Cedar Ford	5,289	943	150	6,382
Central Bearden	10,186	44,660	58,347	113,194
Central Fountain City	15,643	42,603	16,180	74,426
Chilhowee Hills	0	0	0	0
Churchwell Ave	820	0	0	820
City View	620	5,746	1,393	7,759
Clear Springs	10,818	3,245	0	14,063
Comm	0	0	0	0
Concord 1st	25,000	821,375	0	846,375
Cornerstone (M)	235	500	200	935
Corryton	24,167	0	0	24,167
Corum Road	0	0	0	0
Cumberland	5,114	11,189	689	16,992
Cumberland Korean Msn	1,716	0	0	1,716
East Sunnyview	0	0	0	0
East Wind	0	0	0	0
Eastwood	287	0	0	287
Ebenezer	5,500	12,911	0	18,411
Elm Street	0	0	0	0
Fair Havens	743	670	0	1,413
Fairview	2,700	1,857	0	4,557
Farragut 1st	0	238	0	238
Fifth Ave	1,006	3,021	85	4,112
Flint Gap	455	200	0	655
Flwshp	1,220	2,138	0	3,358
Fort Hill	1,634	0	0	1,634
Fountain City 1st	3,500	5,231	0	8,730
Friendship	1,500	1,514	0	3,014
Galilee	9,265	9,620	100	18,985
Gallaher Mem	0	0	0	0
Gayland Heights	310	646	0	955
Gillespie Ave	8,273	894	60	9,227
Glenwood	2,570	0	124	2,694
Grace	125,000	0	0	125,000
Grace Covenant	0	798	0	798
Grassy Valley	260	1,809	160	2,229
Graveston	3,328	808	25	4,161
Greater Bush Grove	0	0	0	0
Greenway	2,100	4,000	0	6,100
Grove Heights	0	0	0	0
Hillcrest	0	472	0	472
Hoitt Ave	0	0	0	0
Holston	7,344	5,826	0	13,171
House Mtn	100	0	100	200
Imani African Flwshp	0	0	0	0
Immanuel	3,073	760	0	3,833
Inskip	3,705	5,678	1,031	10,415
Island Home	2,300	485	0	2,785
John Sevier	4,959	8,000	0	12,959
Knoxville 1st	1,654	28,142	9,087	38,884
Knoxville 2nd	0	0	0	0
Kodak Comm	2,304	0	0	2,304
Lakeview	0	0	0	0
Lincoln Park	4,854	0	1,218	6,072
Linden Ave	0	540	0	540
Little Flat Creek	1,859	0	11	1,870
Lonsdale	0	0	0	0
Loveland	2,201	2,154	0	4,355
Lyons Creek	9,064	7,223	0	16,287
Marble City	833	2,525	416	3,774
Marbledale	3,748	0	0	3,748
Mars Hill	0	277	0	277
Mascot	4,555	1,853	0	6,408
Meadow View	430	0	0	430
Meridian	25,513	10,942	2,529	38,984
Middlebrook Pike	1,350	545	0	1,895
Mooreland Heights	247	0	0	247
Mosaic Comm	1,202	0	0	1,202
Mt Carmel	2,323	1,223	0	3,546
Mt Harmony	8,574	15,872	953	25,399
Mt Olive (East)	0	0	0	0
Mt Olive (South)	41,220	26,085	80	67,385
Mtn View	359	502	0	861
New Covenant	2,163	0	0	2,163
New Hopewell	15,633	18,601	0	34,234
New Mt Calvary	0	0	0	0
New Salem	0	0	0	0
New Sevier Home	1,364	3,083	572	5,020
North Acres	8,630	0	0	8,630
North Hills	71	0	0	71
North Knoxville	8,608	6,613	0	15,221
Northside	0	0	0	0
Northwest	0	0	0	0
Norwood	14,997	5,930	685	21,612
Oakwood	3,900	58	0	3,958
Parkway	18,894	23,080	0	41,973
Peace And Good Will	0	0	0	0
Piney Grove	0	4,000	400	4,400
Powell 1st	0	122,419	43,606	166,025
Ramsey Heights	0	0	0	0
Reunion	2,863	1,169	3,025	7,057
Ridgedale	5,627	290	204	6,121
Ridgeview	860	3,225	500	4,585
Ridgeway	0	0	0	0
Riverdale	5,520	4,680	0	10,200
Riverview	1,250	360	0	1,610
Rocky Hill	10,920	2,572	736	14,227
Roseberry	3,591	4,401	0	7,992
Salem	56,642	0	1,200	57,842
Seven Islands	191	3,036	1,000	4,227
Sevier Heights	0	0	6,350	6,350
Sharon	10,200	28,733	1,205	40,138
Shepherd Of The Hills	0	581	0	581
Smithwood	26,463	18,956	3,416	48,835
South Knoxville	6,346	3,271	872	10,489
South Pointe	1,037	133	0	1,170
Sterchi Hills	6,952	3,189	75	10,216

Church	CP	Designated SBC	Designated TBC
Stoney Point	500	0	0
Sunset Heights	0	0	0
Tarklin Valley	0	0	990
Tennessee Ave	1,003	1,259	0
Third Creek	1,289	2,516	0
Thorn Grove	6,213	304	0
Three Points	0	0	0
Timothy Street	51,688	1,345	0
Trinity	1,402	6,839	0
True Vine	105	0	0
Tuckahoe	0	0	0
Union	7,280	3,125	2,023
Unity	656	0	0
Valley Grove (BCP)	0	3,637	1,950
Valley Grove (OSP)	43,800	30,749	775
Vestal	0	0	0
Victory	250	1,307	0
Victory Chpl	0	725	608
Wallace Mem	126,772	106,874	18,628
Washington Pike	642	643	0
West Haven	7,435	4,758	1,901
West Hills	0	2,929	5,018
West Lonsdale	7,846	2,487	0
West Side	0	0	0
WestLake	0	0	0
White Stone	150	0	0
Zion Flwshp	0	0	0
Total	1,011,129	1,655,092	201,370
Lawrence County Baptist Association			
Barnesville	0	0	0
Beech Grove	600	100	50
Blooming Grove	0	0	0
Bonnertown	0	100	0
Brace	621	366	0
Center Point	0	0	100
Copperas Branch	0	0	0
Deerfield	4,442	1,204	0
Ethridge 1st	1,759	3,569	25
Faith	5,736	3,050	1,348
Five Points	120	0	0
Greater Tabernacle	0	0	0
Gum Springs	3,936	550	0
Highland Park	1,891	1,479	0
Idaho	0	0	0
Immanuel	14,161	4,230	0
Iron City 1st	2,274	1,458	630
Lakeview	0	0	0
Lawrenceburg 1st	35,760	21,951	1,259
Leoma	15,247	11,034	559
Liberty Grove	0	753	0
Loretto 1st	10,329	823	1,178
Macedonia	0	0	0
Mars Hill	9,463	756	1,599
Meadow View	3,258	2,098	0
Mt Horeb	2,520	1,526	0
New Prospect	8,875	1,077	0
O K	1,548	2,179	0
Oak Hill	150	242	300
Park Grove	905	718	150
Pine Grove	811	740	102
Ramah Msrny	0	408	0
Saint Joseph 1st	3,842	0	0
Summertown	5,406	342	12
Trinity	1,240	262	0
West Point	0	3,217	0
Total	134,893	64,231	7,311
Louden County Baptist Association			
Antioch	0	633	271
Ballards Chpl	300	0	0
Bell Ave	0	2,198	0
Bethany	4,479	2,088	0
Blairland	9,998	7,677	0
Calvary (LC)	12,879	8,781	24
Central	956	1,675	1,675
Corinth	7,825	24,633	0
Dixie Lee	21,484	22,638	1,330
East Hills	3,107	5,154	0
Everett Road	1,200	1,775	0
Faithway	0	0	0
Friendship	934	14,883	3,059
Grace Comm	1,536	0	0
Highland Park	13,686	3,683	0
Hilltop	1,494	371	0
Kingston Pike	10,962	2,600	35
La Cruz	220	142	0
Lenoir City 1st	95,543	19,760	250
Lenoir City 2nd	2,123	2,381	0
Louden 1st	3,561	3,871	300
Morganton	1,513	4,487	0
Mt Zion	3,285	3,000	60
Nelson Street	650	662	1,476
New Midway	1,482	1,028	0
New Providence	6,000	32,658	50
Oral	5,687	5,520	237
Philadelphia 1st	5,739	2,878	515
Pine Grove Msrny	2,374	614	0
Pioneer	581	71	0
Pleasant Hill	5,039	3,009	0
Prospect	8,802	2,917	0
Riverview Msrny	1,518	800	0
Silver Ridge	0	0	1,587
South Holston	0	0	0
Stockton Valley	2,967	4,987	0
Stoney Point Msrny	0	0	0
Stream Of Life	0	0	0
Tellico 1st	10,601	8,750	686
Union Fork Creek	0	2,334	807
Vaughn Chpl	1,282	2,912	0
West Broadway	600	5,421	0
Total	250,408	206,992	12,363
Madison-Chester Baptist Association			
Antioch	979	110	0
Ararat	21,542	5,999	825
Beech Bluff	3,303	13,637	0
Bemis 1st	18,785	7,721	2,700
Bethel	2,159	2,532	125
Bible Grove	2,004	670	530
Calvary	31,254	15,170	3,326
Clover Creek	3,657	692	52
Cornerstone Comm	1,800	470	0
Cotton Grove	2,290	940	664
Deanburg	0	0	0
East Laurel	5,192	1,425	100
East Union	22,273	9,718	0
Englewood	56,315	38,741	1,702
Enville	2,927	1,345	20
Friendship (BB)	9,009	2,980	2,010
Friendship (M)	3,842	5,282	370
Grace	3,150	25	0
Henderson 1st	13,500	10,008	0
Highland Park	1,591	3,015	0

CP	Designated SBC	Designated TBC	Total	Church	CP	Designated SBC	Designated TBC	Total	Church	CP	Designated SBC	Designated TBC	Total
12,278	2,367	1,971	16,616	Rocky Mt	2,376	972	0	3,348	Life	1,200	780	0	1,980
1,684	3,023	0	4,707	Rogers Creek	5,598	1,517	323	7,437	Lifeway	534	2,015	0	2,549
69,001	0	0	69,001	Sanford	2,600	0	1,000	3,600	Lighthouse Memphis	297	0	150	447
360	0	0	360	Shiloh	1,200	590	0	1,790	Lighthouse of Arlington	0	0	0	0
10,602	5,394	1,000	16,997	Short Creek	2,716	10,002	400	13,118	Longcrest	2,061	235	0	2,296
9,909	2,396	2,949	15,254	South Liberty	2,861	0	0	2,861	Lucy	18,474	18,293	932	37,698
22,941	7,625	0	30,567	Stephensville	0	0	0	0	Macon Road	250	0	0	250
5,691	3,695	1,935	11,321	Union Grove (D)	450	0	450	900	Magnolia	270	0	0	270
0	0	0	0	Union Grove (N)	3,136	991	0	4,127	Mandarin Chinese	0	0	0	0
1,200	1,126	2,020	4,346	Union McMinn	3,000	6,875	750	10,625	McLean	1,002	1,110	385	2,497
28,405	46,332	210	74,947	Valley Road	0	0	300	300	Memphis 1st	583	4,200	0	4,783
4,860	3,508	513	8,881	Valley View	512	0	688	1,200	Memphis 2nd	1,382	3,311	3,466	8,159
487	100	0	587	Walnut Grove	2,934	500	0	3,434	Merton Ave	1,770	0	270	2,040
0	0	0	0	West End	2,324	543	0	2,867	Millington 1st	132,281	30,623	1,493	164,397
1,500	1,814	0	3,314	Westview	1,138	1,190	759	3,087	Miracle	0	0	0	0
500	1,451	1,500	3,451	Wildwood	4,558	1,917	1,180	7,655	Monument of Love	1,660	460	0	2,120
4,606	1,309	15	5,930	Zion Hill	6,657	3,947	0	10,604	Mtn Terrace	0	0	0	0
431	472	0	903	Total	315,865	260,413	34,984	611,262	Mullins Station	6,359	21,471	1,870	29,700
1,168	309	1,752	3,229	Midland Baptist Association					National Ave	1,713	1,542	340	3,595
1,000	0	0	1,000	Beaverdale	1,649	688	0	2,337	New And Living Way	0	0	0	0
14,642	5,688	1,083	21,413	Bells Campground	11,250	7,455	2,646	21,350	New Dimension	0	0	0	0
6,320	1,011	640	7,971	Bethany	222	545	0	767	New Life	0	0	37	37
4,905	1,025	20	5,950	Bethel	0	0	0	0	New Vineyard	0	0	0	0
2,484	1,362	0	3,846	Bishopville	785	0	0	785	North Frayser	300	0	0	300
2,510	3,377	100	5,987	Black Oak Ridge	2,623	600	0	3,223	Nueva Vida	0	0	0	0
1,783	1,295	1,000	4,078	Cedar Grove	0	0	1,344	1,344	Oaklawn	2,859	310	474	3,643
31,138	38,321	0	69,459	Central View	0	0	300	300	One Faith	0	0	0	0
15,744	10,138	595	26,478	Clear Springs	9,135	7,260	0	16,395	Orchi	711	1,580	55	2,345
534	991	0	1,524	Deep Springs	100	0	0	100	Peterson Lake	0	0	0	0
of Madison County	4,912	540	5,452	Grace Msnry	0	0	0	0	Piperton 1st	4,342	7,056	0	11,398
ry (JC)	7,132	3,338	10,470	Highland	1,850	309	0	2,160	Providence	1,200	4,398	528	6,126
ve	3,979	739	4,718	Hillvale Msnry	0	1,089	0	1,089	Range Hills	6,294	1,808	0	8,102
on	163,600	56,423	267,532	Hinds Creek	752	0	752	1,504	Richland	2,425	2,009	2,500	6,934
400	0	0	400	Hines Creek	702	0	0	702	Ridgeway	60,858	31,903	405	93,166
10,610	7,169	50	17,829	New Beginning	440	100	0	540	River Nile	0	0	0	0
652,886	332,819	77,287	1,062,993	New Beginning	0	0	0	0	Rivercrest	0	697	0	697
Maury Baptist Association				New Hope	2,654	0	0	2,654	Rosemark	2,195	4,083	0	6,278
1,551	1,026	0	2,577	New Liberty	549	0	0	549	Rossville 1st	200	0	0	200
0	0	0	0	Old Beverly Msnry	250	1,314	0	1,564	Rugby Hills	4,638	801	0	5,438
62,947	22,099	9,606	94,652	Pleasant Gap	300	0	0	300	Scenic Hills	1,832	900	205	2,937
450	0	0	450	Pleasant Hill	434	0	200	634	Shelby Forest	4,011	451	600	5,063
2,210	0	0	2,210	Rest In Christ	490	0	0	490	South Woods	0	0	0	0
1,691	1,927	0	3,618	Riverview Msnry	125	0	0	125	Speedway Terrace	1,010	2,000	1,000	4,010
5,200	892	0	6,092	Solid Rock	0	100	0	100	Tchulahoma	0	0	0	0
3,284	566	273	4,123	Stedfast	0	0	0	0	Temple	3,795	8,938	0	12,734
3,139	456	60	3,655	Texas Valley	1,499	0	77	1,576	The Trace Comm	0	0	0	0
7,260	4,166	0	11,426	Third	0	0	0	0	Thessalonians	0	0	0	0
0	394	0	394	True Faith Msnry	0	0	125	125	Trafalgar Village	8,850	5,293	1,550	15,693
234	0	0	234	Union	7,468	7,004	0	14,472	Trinity	7,348	23,009	0	30,357
0	0	0	0	West Baxter Ave	0	0	0	0	True Flwshp	0	0	0	0
2,078	721	0	2,799	Total	43,278	26,464	5,443	75,185	Union Ave	9,701	12,742	42	22,484
150	0	0	150	Mid-South Baptist Association					Unity	1,683	0	0	1,683
2,185	541	0	2,726	1st Chinese	500	3,530	0	4,030	Vietnamese	1,734	3,057	0	4,790
204	0	0	204	1st of Fisherville	0	0	0	0	Walnut Grove	4,223	4,800	3,200	12,223
394	0	0	394	Agape	6,713	1,703	20	8,436	Wells Station	11,485	7,364	1,943	20,792
1,738	210	0	1,948	Ardmore Terrace	0	0	0	0	West Frayser	1,377	1,259	0	2,636
204	0	0	204	Arlington Flwshp	0	0	210	210	White Station	9,567	2,862	1,380	13,809
0	0	0	0	Audubon Park	15,623	16,400	4,200	36,223	Whitehaven	10,640	12,055	11	22,706
7,461	3,740	1,242	12,443	Balmoral	12,969	10,408	0	23,377	Whitten Mem	1,200	2,610	0	3,810
1,235	200	0	1,435	Bartlett	74,408	0	1,888	76,295	Woodstock	0	0	0	0
0	0	0	0	Bartlett Hills	7,330	10,075	1,250	18,655	Zoe	0	0	0	0
13,651	4,537	1,465	19,653	Bella Vista	0	0	0	0	Total	1,292,673	965,115	80,771	2,338,560
31,725	12,231	1,258	45,214	Bellevue	169,471	236,428	5,350	411,249	Mulberry Gap Baptist Association				
3,045	563	107	3,715	Berclair	6,990	3,754	0	10,744	Union Grove	0	0	120	120
3,236	3,616	0	6,852	Big Creek	0	0	0	0	Walker's Msnry	0	0	200	200
375	1,772	0	2,147	Braybourne	0	0	0	0	Total	0	0	320	320
296	64	0	360	Briarwood	10,542	0	250	10,792	Nashville Baptist Association				
20	0	0	20	Brinkley Heights	1,387	0	0	1,387	1st Emanuel	0	0	0	0
1,318	2,007	529	3,854	Broadmoor	21,944	3,312	583	25,839	1st Family	2,746	754	110	3,610
11,157	8,068	0	19,225	Brookside	2,902	3,846	190	6,938	1st Flwshp Msnry	0	0	0	0
900	800	900	2,600	Brunswick	1,511	2,683	200	4,394	1st Haitian	0	0	0	0
0	0	0	0	Calvary	750	135	0	885	Alta Loma	400	1,432	55	1,887
0	460	683	1,143	Cambodian Highland	419	0	0	419	Antioch	1,422	1,011	0	2,433
6,183	4,361	872	11,416	CenterPoint	0	0	0	0	Antioch 1st	4,765	2,259	0	7,024
175,519	75,416	16,995	267,930	Charjean	900	1,062	0	1,962	Arabic Evangelical	0	0	0	0
McMinn-Meigs Baptist Association				Cherokee	18,046	5,521	1,157	24,724	Arabic Msn (FBC)	0	0	0	0
0	2,500	0	2,500	Cherry Road	29,231	20,235	163	49,629	Arabic Msn (Una)	0	0	0	0
37,861	72,609	4,432	114,903	Chief Cornerstone	600	0	0	600	Arrington	932	0	0	932
0	0	0	0	Christ Comm	2,228	0	0	2,228	Ashland City 1st	1,800	759	0	2,559
0	1,000	0	1,000	Church Without Doors	0	0	0	0	Bakers Grove	700	0	92	792
488	0	0	488	Collierville 1st	64,388	85,984	10,316	140,056	Beautiful Gate	0	0	0	0
14,874	11,255	2,451	28,580	Colonial	36,811	15,571	5,897	58,279	Bell Road	350	439	50	839
2,118	667	300	3,085	Comm	0	0	0	0	Bellevue	35,839	12,288	3,035	51,161
0	390	0	390	Cordova	7,616	3,044	1,870	12,530	Belmont Heights	18,366	4,385	100	22,851
0	0	0	0	Covenant	15,753	28,129	2,485	46,368	Bending Chestnut	0	283	0	283
9,012	11,055	0	20,067	Crestview	600	0	0	600	Berean	0	0	0	0
0	0	0	0	Crosspointe	0	0	0	0	Berryville	3,342	350	120	3,812
2,216	1,000	800	4,016	Crossroads	12,742	5,618	1,483	19,843	Blessed Korean	2,400	0	0	2,400
12,500	3,382	0	15,881	Eads	1,997	1,000	0	2,997	Bluegrass	32,069	16,919	1,509	50,497
1,934	1,079	0	3,013	East Acres	0	0	0	0	Bluegrass Japanese	0	0	0	0
1,194	1,000	0	2,194	Egypt	665	0	0	665	Bordeaux	1,349	0	0	1,349
691	100	0	791	Ellendale	31,398	58,020	7,566	96,985	Brentwood	60,000	178,485	44,328	282,813
14,505	7,716	1,286	23,507	Elliston	900	4,129	0	5,029	Brentwood Chinese Flwshp	0	0	0	0
0	4,757	330	5,087	Emmanuel	6,775	3,390	2,174	12,339	Brentwood Deaf	0	0	0	0
4,958	4,361	64	9,383	Eudora	8,072	1,742	75	9,889	Broadmoor	2,202	0	0	2,202
34,117	21,270	4,702	60,089	Faith	96,984	82,500	10,200	189,684	Brook Hollow	11,362	6,018	1,150	18,530
968	1,343	0	2,310	Faith Heritage	2,551	0	0	2,551	Calvary	2,199	1,828	0	4,027
59,982	7,739	50	67,771	Faith Msn	200	0	0	200	Calvary Bible	0	0	0	0
0	0	0	0	Family Comm	0	0	0	0	Cambodian Msn	1,188	0	0	1,188
5,379	4,053	547	9,978	Flwshp	1,149	512	150	1,811	Central	6,253	1,850	0	8,103
1,500	3,862	785	6,147	Forest Hill	0	0	100	100	Central of Nashville	0	0	0	0
0	0	0	0										

Church	CP	Designated SBC	Designated TBC	Total
Grace Covenant	0	0	0	0
Grace Evangelical	0	0	0	0
Grace Korean	0	0	0	0
Grace Park-Tri-County	1,750	645	0	2,395
Grassland Heights	2,200	8,913	3,834	14,948
Grays Point	0	0	0	0
Green Hill	0	0	0	0
Haitian of Woodcock	0	0	0	0
Harmony Flwshp	859	1,355	0	2,214
Harpeth 1st	432	0	0	432
Harpeth Heights	17,934	34,656	1,550	54,140
Harvest Fields	2,660	866	550	4,076
Haywood Hills	28,677	9,044	1,808	39,529
Hermitage 1st	900	901	376	2,177
Hermitage Hills	155,580	50,556	6,484	212,620
Hickory Hills	1,493	166	0	1,659
Hickory Hollow	2,375	2,119	863	5,357
Hillcrest	679	369	1,425	2,473
Hillhurst	6,636	1,156	169	7,961
Hillview (F)	0	108	103	211
Hillview (G)	1,400	2,117	0	3,517
Hisp South Gate	0	0	0	0
Hispana de Nashville	0	0	0	0
Hope Christian Flwshp	0	0	0	0
I.B. Alcanse Hispano	250	0	0	250
Immanuel	7,410	4,533	9,320	21,263
Independent Evangelical	0	0	0	0
Inglewood	22,850	19,460	1,681	43,991
Intl Word of Life	0	0	0	0
Ivy Mem	250	121	0	371
Japanese Nashville	1,125	272	63	1,460
Joelton 1st	47,580	14,677	1,619	63,877
Judson	59,052	31,093	6,330	96,475
King Of Glory	0	0	0	0
Kol Dodi	1,540	0	0	1,540
Korean Bridge Comm	780	150	340	1,270
Korean Han Mee	990	0	0	990
Korean Msn (HH)	0	0	0	0
Korean Msn (M)	0	0	0	0
Korean Unity	2,100	960	0	3,060
Lakeview	550	0	0	550
Lakewood	12,069	5,455	1,008	18,532
Liberty	1,101	310	30	1,441
Life Comm	6,266	0	0	6,266
Lincova Hills	6,000	3,721	2,121	11,841
Living Faith Flwshp	0	0	0	0
Lockeland	1,869	1,525	0	3,394
Madison 1st	0	0	0	0
Madison Heights	4,445	509	0	4,954
Messianic Congregation	0	0	0	0
Mill Creek	2,977	1,127	1,066	5,170
Miracle	0	121	0	121
Mitiku Adisu Ethiopian	0	0	0	0
Mosaic	0	0	0	0
Mt. View	7,323	1,437	597	9,357
Nashville 1st	95,148	90,071	49,770	234,989
Nashville 3rd	3,323	788	757	4,868
Nashville Chinese	300	0	0	300
Neely's Bend	1,500	506	253	2,259
New Beginnings	0	0	0	0
New Birth Ministries	0	0	0	0
New Faith	0	0	0	0
New Hope	28,802	995	0	29,797
New Life	6,866	0	0	6,866
North Pointe Comm	2,600	482	0	3,082
Northwood	653	411	250	1,314
Oak Valley	22,442	27,974	81	50,497
Old Hickory 1st	13,945	29,294	500	43,739
Open Door	0	0	0	0
P.I.B. (N)	600	0	0	600
P.I.B. (A)	0	0	0	0
Park Ave	8,103	4,433	0	12,536
Parkway	61,480	22,305	3,539	87,323
Pegram 1st	3,405	352	288	4,045
People's	27,300	40,000	0	67,300
Peytonville 1st	0	0	0	0
Pilgrimage Project	0	0	0	0
Pleasant View 1st	10,335	3,116	0	13,451
Priest Lake Comm	400	0	0	400
Radnor	2,400	1,728	0	4,128
Rayon City	789	746	0	1,536
Redeemer Flwshp	0	0	0	0
Richland	3,154	1,000	0	4,154
Ridgeview Comm	6,000	3,076	0	9,076
Rivergate 1st	50	0	0	50
Rolling Hills Comm	18,471	0	0	18,471
Romanian 2nd Generation	1,000	0	0	1,000
Romanian Msn	0	0	0	0
Rosedale	2,814	1,242	0	4,056
Salem	834	0	0	834
Saturn Drive	40	0	155	195
Scenic View	0	364	0	364
Scottsboro 1st	1,600	6,228	0	7,828
Set-Free Nashville	2	0	0	2
Shelby Ave	2,152	1,959	0	4,111
Simeon	4,408	0	0	4,408
Slavic	140	0	0	140
Slavic - Grace	0	0	0	0
Smith Springs	2,450	2,280	830	5,560
SonRise	0	0	0	0
South Gate	1,558	0	0	1,558
Stonebrook	100	1,152	0	1,252
Strait Word	0	0	0	0
Sudanese Msn	0	0	0	0
Sudanese Nashville	0	0	0	0
Temple	12,880	1,923	168	14,970
Thai Intl	60	0	0	60
Thompson Station	93,507	37,672	0	131,179
Triune	12,748	13,861	362	26,971
True Faith	853	121	365	1,339
True Vine	178	0	134	312
Tulip Grove	80,459	58,666	33,408	172,533
Tulip Grove Flwshp	0	0	0	0
Tusculum Hills	104,065	13,577	857	118,499
Two Rivers	0	59,242	40,080	99,322
Una	10,236	8,286	0	18,522
Union Hill	1,548	2,011	1,640	5,199
Unity	0	0	0	0
Unity Institutional Msny	0	0	0	0
Valley View	1,703	1,211	583	3,497
Vietnamese Msn	1,006	367	0	1,373
Walker Mem	18,878	4,232	2,020	25,131
Welch Bend Apts Flwshp	0	0	0	0
West Franklin	25,260	29,497	6,610	61,367
West Nashville	0	0	0	0
Westview	225	0	178	403
Westwood	3,600	4,392	0	7,992
Whitsit Chpl	0	0	0	0
Woodbine	3,000	2,400	0	5,400
Woodbine Laotian	0	0	0	0
Woodcock Mem	0	0	0	0

Church	CP	Designated SBC	Designated TBC	Total
Woodmont	11,164	47,018	35,590	93,772
Total	1,889,320	1,222,068	330,755	3,442,143
New Duck River Baptist Association				
Belfast	0	170	0	170
Bell Buckle	1,139	0	502	1,641
Bethlehem	260	286	102	648
Calvary	14,819	0	3,025	17,844
Caney Springs	557	0	0	557
Charity	200	600	350	1,150
College Grove 1st	800	150	330	1,280
Cornersville	6,355	4,082	1,225	11,662
East Commerce	17,188	5,568	591	23,347
Eastview	600	1,392	733	2,725
Edgemont	12,213	3,015	0	15,228
El Bethel	5,419	880	123	6,422
Fair Haven	8,445	3,341	0	11,786
Farmington	1,877	176	468	2,522
Friendship	160	250	0	410
Hannahs Gap	652	200	0	852
Hickory Hill	2,224	696	0	2,920
Holts Corner	4,989	794	0	5,783
Hurricane Grove	1,785	481	0	2,266
Immanuel	205	0	0	205
Lakeview	450	0	0	450
Lewisburg 1st	16,345	9,037	315	25,697
Lewisburg Flwshp	0	0	0	0
Longview	1,857	542	75	2,474
Lynchburg 1st	2,457	1,197	0	3,654
Midland Heights	6,722	6,441	0	13,163
Mt Lebanon	135	0	0	135
Mt Moriah	4,400	3,064	0	7,464
New Bethel	0	1,417	0	1,417
New Hope	954	1,000	58	2,012
Normandy 1st	1,871	155	354	2,380
North Fork	9,107	1,596	0	10,703
Parkview	4,649	1,713	0	6,361
Rover	5,353	462	0	5,815
Shelbyville 1st	50,747	126	458	51,331
Shelbyville Mills	30,784	2,766	900	34,450
Short Creek	964	1,145	464	2,573
Smyrna	5,000	2,858	750	8,608
Southside	988	1,091	0	2,079
Twin Oaks	150	0	0	150
Unionville 1st	578	138	0	716
Wartrace 1st	5,618	3,150	1,765	10,533
Total	229,016	59,981	12,588	301,584
New Salem Baptist Association				
Brush Creek	4,797	0	500	5,297
Carthage 1st	8,200	6,874	1,050	16,124
Carthage Road	765	250	0	1,015
Gordonsville 1st	6,463	2,923	285	9,672
Hickman	1,770	2,880	900	5,550
Lancaster	339	0	0	339
New Middleton	8,909	2,899	20	11,828
Peyton Creek	1,223	1,485	0	2,708
Riddleton	686	546	0	1,232
Rome	0	0	0	0
Total	33,151	17,857	2,755	53,763
Nolachucky Baptist Association				
Alpha	93,438	39,665	955	134,058
Bethel	1,318	2,510	0	3,828
Beulah	8,664	6,730	495	15,889
Bible's Chpl	7,465	14,738	200	22,403
Briar Thicket	219	300	0	519
Brown Springs	6,000	4,092	750	10,842
Buffalo Trail	34,007	15,704	2,391	52,102
Bulls Gap FBC	3,535	6,866	1,159	11,560
Calvary	3,618	14,398	173	18,189
Calvue	0	602	0	602
Catherine Nenny	0	1,000	0	1,000
Cedar Creek	621	0	0	621
Central	0	0	0	0
Cherokee Hills	2,833	2,276	130	5,239
Concord	2,344	805	470	3,619
Enterprise	4,318	6,627	0	10,945
Fairfield	2,845	3,161	0	6,006
Fairview	9,827	8,373	2,488	20,688
Fernwood	533	381	681	1,595
Friendly View	0	0	0	0
Grace	8,234	3,838	555	12,627
Highland	0	0	0	0
Hillcrest	8,077	5,410	0	13,486
Holt's	5,261	8,166	0	13,427
Kidwell's Ridge	900	7,304	0	8,204
La Gran Comision	84	2,745	0	2,829
Lakeshore Road	875	2,352	0	3,227
Leadvale	16,558	16,240	4,332	37,130
Lebanon	6,622	13,241	284	20,147
Macedonia	300	500	0	800
Magna View	6,522	5,079	569	12,170
Manley	63,364	38,942	0	102,305
Montvue	450	1,768	0	2,218
Morningside	14,819	4,318	630	19,767
Morristown 1st	117,986	97,053	6,812	221,851
Mt Zion	600	1,905	0	2,505
Nolachucky	0	1,450	0	1,450
Omega	355	1,210	0	1,565
Parkway	0	600	0	600
Pleasant Ridge	2,125	2,734	0	4,859
Pleasant View	1,000	3,483	711	5,194
Robertson Creek	1,282	546	0	1,828
Rocky Point	6,532	6,460	2,675	15,667
Roe Junction	0	0	600	600
Russellville	10,262	14,302	0	24,564
Staten Gap	427	0	0	427
Sunrise	779	6,390	0	7,169
Thankful	0	0	0	0
Three Springs	0	100	0	100
True Life	2,263	0	0	2,263
Warrensburg	2,111	1,056	323	3,489
Westview	0	2,207	0	2,207
White Oak Grove	1,461	1,710	0	3,171
Whitesburg	500	1,591	0	2,091
Witt	3,975	11,977	0	15,952
Total	465,309	392,903	27,383	885,595
Northern Baptist Association				
Alder Springs	0	0	0	0
Blue Springs Msny	0	0	0	0
Carrs Branch Msny	0	47	329	376
Clear Branch	300	150	0	450
Fairview	0	0	0	0
Hickory Valley	394	0	0	394
Hubbs Grove	0	0	0	0
Leatherwood	0	0	0	0
Lily Grove Msny	0	0	0	0
Lone Mtn	0	600	0	600
Maynardville 1st	3,058	2,173	1,921	7,152
Milan Msny	1,950	4,400	0	6,350
Nave Hill Msny	0	0	0	0
New Friendship Msny	492	459	492	1,443
Pleasant Hill	0	0	0	0

Church	CP	Designated SBC	Designated
--------	----	-------------------	------------

CP	Designated	Designated	Total	Church	CP	Designated	Designated	Total	Church	CP	Designated	Designated	Total
	SBC	TBC				SBC	TBC				SBC	TBC	
773	364	0	1,137	Lakeview	6,314	5,809	0	12,123	West Colonial Hills	20,308	9,423	144	29,876
0	0	704	704	Lorraine	431	0	0	431	West View	3,875	15,783	0	19,658
1,260	0	0	1,260	Michie 1st	750	2,742	245	3,737	Total	348,124	350,375	41,523	740,022
5,840	3,673	615	10,128	Milledgeville	0	0	0	0	Sweetwater Baptist Association				
9,826	7,542	11,349	28,717	Morris Chpl	1,991	0	152	2,143	411 Chpl	0	3,235	672	3,907
300	0	162	462	Mt Gilead	4,060	1,116	840	6,016	Altoona	0	200	0	200
18,869	8,984	320	28,172	Mt Hermon	13,652	1,800	0	15,452	Antioch	100	0	0	100
0	0	0	0	Mt Zion	2,443	2,847	0	5,290	Beaty's Chpl	0	0	0	0
2,342	612	0	2,954	New Harmony	2,035	600	0	2,635	Bethlehem	2,576	32,576	0	35,151
692	147	0	839	New Hope	266	90	0	356	Big Creek	0	0	0	0
4,415	989	0	5,403	New Prospect	105	0	255	360	Calvary	0	0	1,085	1,085
6,786	6,980	0	13,767	Northside	3,188	8,100	0	11,288	Cane Creek	480	3,476	0	3,956
3,014	1,040	321	4,375	Olive Hill East	5,179	917	0	6,096	Cedar Fork	5,464	3,600	1,220	10,284
0	1,250	0	1,250	Olive Hill West	125	79	0	204	Cedar Valley	6,352	2,955	0	9,307
16,307	12,809	2,611	31,726	Pleasant Site	493	173	0	666	Chestnut	4,038	1,627	714	6,379
100	150	150	400	Ramer	5,292	3,000	0	8,292	Christianburg	1,110	1,931	0	3,042
107,922	63,692	17,231	188,845	Savannah 1st	13,943	7,710	135	21,788	Citico	426	200	300	926
Sequatchie Valley Baptist Association					Savannah 2nd	0	539	539	Clifton	100	0	0	100
1,571	1,504	115	3,190	Selmer 1st	11,549	13,053	320	24,922	Comm	466	0	0	466
2,090	1,062	108	3,260	Selmer 2nd	630	0	171	801	Compromise	0	667	0	667
300	600	0	900	Sharon	1,750	0	0	1,750	Druid Hill	0	928	0	928
390	0	0	390	Southside	3,158	500	300	3,958	Ebenezer	380	0	0	380
2,485	1,456	0	3,941	Temple	496	0	0	496	Fairview	0	40	0	40
394	450	250	1,095	Trinity	150	900	0	1,050	Fairview Tabernacle	5,700	6,299	0	11,999
5,253	2,735	480	8,468	Turkey Creek	3,235	876	0	4,111	Glenlock	620	1,624	0	2,244
387	110	0	497	Unity	5,685	1,500	300	7,485	Gregory's Chpl	0	0	0	0
6,912	2,332	1,114	10,358	Walnut Grove 1st	137	0	0	137	Hilltop	0	200	0	200
100	0	0	100	West Shiloh	6,077	1,620	0	7,698	Hopewell Springs	2,592	1,979	1,551	6,122
20,568	7,409	1,872	29,849	Total	191,774	96,021	4,626	292,421	Howards Chpl	243	0	474	717
4,443	1,294	0	5,737	Stewart County Baptist Association					Island Creek	1,631	2,010	378	4,019
0	0	400	400	Bear Springs	400	197	0	597	Lakeside	600	3,090	0	3,690
747	0	0	747	Big Rock Msnry	8,730	4,790	0	13,520	Long Ridge	0	0	0	0
16,975	5,823	1,474	24,272	Bumpus Mills Msnry	0	0	0	0	Lower Chilhowee	0	0	0	0
6,692	2,158	0	8,850	Calvary	0	0	0	0	Macedonia	0	0	0	0
1,996	2,400	79	4,474	Carlisle Msnry	667	296	0	964	Madisonville 1st	26,063	11,000	0	37,063
971	2,500	0	3,471	Corinth	788	1,000	0	1,788	Maple Springs	0	0	0	0
380	1,365	0	1,745	Covenant Flwshp	300	100	0	400	Miller's Chpl	0	125	0	125
3,370	200	100	3,670	Dover 1st	9,500	4,417	151	14,068	Mt Calvary	0	0	0	0
574	0	0	574	East Oak Grove	0	0	0	0	Mt Isabella	0	0	0	0
15,526	9,326	410	25,261	Fairview	105	100	0	205	Mt Pleasant	0	0	0	0
582	102	582	1,265	Hurricane Creek	1,975	500	459	2,934	Mt Zion	2,778	3,234	100	6,112
1,695	1,502	0	3,196	Lakeview	1,036	522	0	1,558	Murray's	0	400	0	400
5,523	4,003	556	10,082	Little Rock	0	0	0	0	New Bethany	1,228	328	0	1,556
2,345	2,044	0	4,389	Maranatha	362	131	0	493	New Macedonia	0	2,011	0	2,011
11,945	3,477	2,000	17,422	Midway	262	100	0	362	New Providence	2,868	2,700	0	5,568
114,214	53,852	9,539	177,605	Mt Sinai	0	0	800	800	North Sweetwater	1,712	805	0	2,517
Sevier County Baptist Association					New Haven	450	340	790	Notchey Creek	1,350	3,262	0	4,612
3,892	3,954	1,036	8,882	Pleasant Grove	600	211	0	811	Oak Grove	1,718	471	0	2,189
2,500	3,302	700	6,502	Pleasant Grove Hsp	0	0	0	0	Oakland	0	100	0	100
1,711	604	0	2,315	Pugh Flat	848	100	100	1,048	Old Sweetwater	0	228	570	798
2,787	3,440	0	6,227	Walnut Grove	2,114	1,461	0	3,575	Piney Grove	0	0	0	0
300	199	0	499	Total	28,137	14,265	1,510	43,912	Poplar Bluff	0	7,202	0	7,202
2,651	2,168	0	4,819	Stone Baptist Association					Reed Springs	1,576	6,484	0	8,061
0	0	0	0	Bangham Heights	9,031	2,819	0	11,850	Rocky Springs	1,140	8,097	200	9,437
2,642	577	0	3,219	Baxter 1st	300	380	0	680	Rural Vale	856	0	0	856
0	0	0	0	Bear Creek	300	320	0	620	Shady Grove	0	100	0	100
1,053	26	0	1,079	Brotherton	250	0	0	250	Shelton Grove	0	0	0	0
433	0	0	433	Cane Creek	412	200	0	612	Shoal Creek	156	156	240	552
1,394	200	0	1,594	Caney Fork	2,673	3,049	807	6,529	South Madisonville	3,531	291	32	3,855
1,715	1,049	179	2,943	Cedar Hill	3,681	1,668	306	5,655	Sweetwater 1st	28,925	18,555	1,109	48,589
2,100	1,324	75	3,499	Church On The Hill	400	0	900	1,300	Tellico	645	4,900	0	5,545
0	0	0	0	Colonial View	3,532	1,942	125	5,598	Tellico 1st	5,248	1,455	0	6,703
4,642	2,102	5,874	12,618	Cookeville 1st	110,654	38,584	570	149,808	Tevis Springs	295	968	550	1,813
1,867	413	0	2,279	Cookeville Chinese	0	0	0	0	Towee Falls	0	0	0	0
2,672	2,737	275	5,684	Cummins Mill	491	0	0	491	Trinity	0	0	0	0
1,465	1,500	1,000	3,965	Dodson's Branch	0	0	0	0	Unicoi Msnry	193	0	0	193
4,014	2,000	0	6,014	Double Springs	1,131	0	970	2,101	Union Hall	0	475	475	950
1,590	1,100	0	2,690	Eastwood	2,8,								

Church	CP	Designated	Designated	Total	Church	CP	Designated	Designated	Total	Church	CP	Designated	Designated
		SBC	TBC				SBC	TBC				SBC	TBC
Laurel Hill	264	160	0	424	New Bethel	50	318	0	368	Emory Valley	0	0	0
Liberty	1,196	400	250	1,846	New Harmony	11,151	0	0	11,151	Faith	5,126	0	0
Ole Bethel	456	126	330	912	New Hope	800	1,500	0	2,300	Faith Comm	1,330	0	2,500
Pistole	1,424	459	383	2,266	North Fork	3,211	630	380	4,221	Flwshp	0	0	0
Pleasant Hill	449	449	0	897	Oak Hill	0	500	100	600	Flwshp (BC)	0	1,620	0
Rock Comm.	3,506	0	0	3,506	Paris 1st	56,375	42,753	2,425	101,553	Flwshp (M)	1,285	0	0
Sparta 1st	12,341	14,014	0	26,355	Point Pleasant	10,922	1,861	0	12,782	Flwshp of the Smokies	318	0	0
Spencer 1st	1,580	1,693	235	3,508	Puryear	10,100	5,481	1,200	16,781	Friendship	0	0	0
Total	50,551	48,852	2,783	102,186	Ramble Creek	1,382	500	0	1,882	Friendship	0	0	0
Watauga Baptist Association					Russwood	612	541	0	1,153	Fulton 1st	11,309	0	0
Bakers Gap	1,039	1,222	243	2,504	Shady Grove	1,242	216	0	1,458	Garver's Chpl	0	0	0
Beck Mtn	4,773	640	0	5,413	Spring Creek	100	100	100	300	Grace	20	0	0
Bethany	5,195	10,230	0	15,425	Springhill	2,944	1,775	3	4,722	Grace Comm	17,210	0	0
Bethel	100	313	0	413	Springville	0	2,939	50	2,989	Grace Flwshp	0	0	0
Big Springs	8,031	1,413	180	9,624	Stalene Cowboy	38	0	0	38	Grantsboro	0	0	2,041
Biltmore	1,638	1,157	491	3,286	Temple	2,902	2,346	0	5,248	Grave Hill	0	0	0
Butler	681	507	45	1,233	Union Friendship	2,134	1,395	0	3,529	Greater 1st	600	0	0
Caldwell Springs	6,340	667	0	7,007	West Paris	6,233	3,072	20	9,325	Greater Hope	2,309	0	0
Calvary	22,763	7,677	0	30,440	Total	157,607	88,943	6,110	252,661	Harrison 1st	0	0	100
Cedar Grove	1,614	355	0	1,969	William Carey Baptist Association					Harvest Hills	0	0	0
Central	0	412	463	875	Brogan Ave	719	115	0	834	Hearts Way	0	0	0
Cobbs Creek	1,886	2,027	73	3,986	Cash Point Msnry	5,959	3,989	0	9,948	Hebrew	0	0	0
Doe River	1,121	1,414	0	2,535	Comm	300	0	0	300	Hendersonville Mobile Msn	0	0	0
Dungan Chpl	6,051	500	0	6,551	Donaldson Grove	1,793	695	20	2,508	High Street	0	0	0
East Side	1,301	2,130	471	3,902	Fayetteville 1st	42,270	0	0	42,270	Hinestown	0	0	0
Elizabethton 1st	24,517	19,493	984	44,994	Flintville 1st	6,314	7,059	0	13,373	Hope Comm	0	0	0
Elk River	500	519	0	1,019	Friendship Southern	454	0	0	454	Howell Hill Msnry	0	0	0
Fairview	5,547	874	170	6,591	Hickory Grove	654	1,053	202	1,909	Impact Flwshp	0	0	0
Grace	26,649	8,093	75	34,817	Hilldale	102	0	0	102	Ivywood Comm Center	0	0	0
Hampton 1st	3,908	3,041	605	7,554	Howell 1st	785	178	0	962	King's Cross	1,042	0	0
Happy Valley	0	380	0	380	Kellys Creek	0	0	0	0	Kinsman Redeemer	60	0	0
Harmony	2,343	794	0	3,137	Kirkland	2,760	4,997	0	7,757	Lawrence Grove	0	3,786	2,364
Hunter 1st	600	3,011	0	3,611	Lexie Cross Roads	0	0	0	0	Liberty	0	0	0
Hunter Mem	6,595	1,502	0	8,097	Lincoln	2,525	886	186	3,597	Life Springs	0	0	0
Immanuel	9,303	4,495	90	13,888	Macedonia Southern Msnry	967	0	39	1,006	Life Streams Flwshp	1,412	0	257
Little Doe	7,188	1,926	1,039	10,153	Maranatha	1,000	435	0	1,435	Lighthouse Comm	0	0	0
Little Milligan	2,139	1,161	0	3,300	McBurg 1st	600	967	600	2,167	Live Oak	0	0	0
Little Mtn	970	300	0	1,270	Molino	0	0	0	0	Living Water Comm	0	0	0
Lynn Valley	0	7,811	1,953	9,764	Mulberry	0	0	0	0	Living Word Comm	0	0	0
Lynnwood/Lynnridge Msn	0	0	0	0	New Grove	845	1,654	0	2,498	Macedonia	0	0	0
Meadowview	0	0	0	0	New Hope	0	0	600	600	Maple Grove	0	0	0
Mtn City 1st	12,481	4,100	114	16,696	Oak Hill	3,566	1,751	840	6,157	Memphis Mandarin	0	2,000	0
Nelson Chpl	4,127	3,842	0	7,969	Parks City	10,100	3,563	165	13,828	Miracle Msnry	0	0	0
North Side	317	50	0	367	Petersburg 1st	627	750	716	2,093	Mt Carmel Msnry	250	0	0
Oak Street	11,635	5,560	590	17,785	Pleasant Grove	115	0	125	240	Mt Pleasant	0	101	213
Pine Grove	0	1,097	439	1,536	Pleasant Hill	0	0	5,441	5,441	Mt View	0	0	0
Pleasant Grove	9,223	2,492	0	11,715	Pleasant Ridge	464	150	232	846	Mt Zion (A)	0	0	300
Poplar Grove	3,518	509	0	4,027	Prospect	12,128	3,075	200	15,403	Mt Zion (H)	0	0	0
Powder Branch	0	601	0	601	Stewarts Chpl	4,257	3,256	4,839	12,352	Mtn View	0	0	100
Rittertown	3,822	3,148	50	7,020	Taft 1st	4,736	0	270	5,006	Mulberry Gap	0	0	0
Riverview	1,754	500	0	2,254	West End	2,921	1,509	1,500	5,930	My Father's House	0	0	0
Roan Creek	1,800	1,350	0	3,150	Total	106,961	36,082	15,975	159,019	New Beginning	0	0	0
Roan Mtn 1st	4,417	2,545	631	7,593	Wilson County Baptist Association					New Beginning MB	0	0	0
Roan Park	4,461	2,874	0	7,335	Alexandria 1st	5,890	1,743	95	7,728	New Comm	0	0	0
Rock Springs	0	100	0	100	Bartons Creek	10,084	10,644	0	20,728	New Covenant	0	2,320	50
Shady Valley	0	1,005	0	1,005	Big Springs	201	0	0	201	New Covenant Comm	190	0	0
Siam	7,103	3,872	60	11,035	Calvary	4,413	6,357	0	10,770	New Hope (C)	0	0	0
Sink Valley	0	0	0	0	Cedar Creek	841	2,192	360	3,392	New Hope (R)	0	0	0
Sinking Creek	3,075	3,509	2,689	9,273	Cedar Grove	2,805	1,616	0	4,420	New Life	505	0	0
State Line	0	609	0	609	Christ's Servants	0	0	0	0	New Life Comm	0	0	0
Stoney Creek	2,840	0	674	3,515	Comm of Wilson	1,240	17	0	1,256	New River	0	0	1,637
Sugar Grove	300	2,546	0	2,846	Crossroads	0	0	0	0	New Song Flwshp	138	0	0
Unaka	578	1,294	173	2,046	Disciples Of Christ	0	0	0	0	New Victory	0	0	0
Union	6,931	1,770	0	8,701	Epsana de Lebanon	0	0	0	0	New Way (T)	0	270	0
Walnut Grove	1,380	250	0	1,630	Fairview	25,231	12,884	340	38,455	NorthStar	0	0	0
Watauga 1st	472	400	538	1,410	Faith	0	1,000	0	1,000	Nueva Vida	200	50	50
Willow Springs	1,872	577	0	2,450	Fall Creek	13,558	4,277	0	17,835	Oak Grove Msnry	540	709	0
Zion	5,478	596	578	6,652	Flwshp (W)	408	125	163	695	Old Salem	0	0	0
Total	240,377	129,259	13,419	38383,									

Former New Orleans minister returns home to Kingsport

Katia Knox
and Reflector

KINGSFORT — If what goes comes around, then a port pastor and his family, were transplanted from Orleans as Hurricane Katrina evacuees, will soon mission team back to his Louisiana church.

Lynn Garden Baptist Church recently called Michael Wrye previously as an associate pastor at Water Baptist Church, Orleans, which took a hit during Hurricane

Katrina leaving marks on its walls where nine feet of water stood.

Wrye, his wife, Denise, and daughter Kassidy traveled to Kingsport to be with parents two days before their church and his school, New Orleans Baptist Theological Seminary, were damaged by Hurricane Katrina in August of 2005.

A native of Kingsport, Wrye is a graduate of Tennessee Technological University, Cookeville, and New Orleans Seminary where he is currently working on his doctorate.

The family alternated living

a week with two sets of parents in the Kingsport area. His parents are Gerald and Joyce Wrye, who are members of First Baptist Church, Kingsport, where Michael was ordained to the ministry. Denise's mother, Deanne Griffin, attends Lynn Garden Church.

According to Wrye, he and eight other paid Edgewater Church staff members were scattered after the hurricane awaiting the news that the New Orleans church, located three miles from the seminary, would rebuild.

"It was a struggle for me to decide whether to go back to the church in New Orleans," he said. "I prayed to God to let me

know what He wanted me to do, because I had no clue."

Rebuild teams began cleanup at Edgewater Church in November 2005, and Edgewater Church leadership decided to rebuild in December 2005. In November Wrye told Edgewater



WRYE

Church that he did not feel called to return and began talking with Lynn Garden Church.

By December he felt led to Lynn Garden Church and was presented to the congregation in January 2006. He began serving as pastor in February.

Also in January Edgewater

Church began a plan to rebuild.

"I am amazed at how God didn't call me back to New Orleans, but He is still giving me a passion to help serve in that area," Wrye noted.

Lynn Garden Church will serve his former congregation July 8-15, Wrye said. About 15 Lynn Garden members will work to "gut" area homes.

Edgewater Church is currently serving as a base of operations for groups rebuilding houses and follow up with the families of the homeowners whose houses are rebuilt.

In reviewing the recent turn of events and moving back to Kingsport, Wrye noted he "gained a greater passion" for missions and ministry, but feels he is now "where God wants me to be" as he leads Lynn Garden "to be more missions-minded." □



LifeWay
CHURCH BUSES

Buses provided for LifeWay by
Carpenter Bus Sales
Franklin, TN • Since 1953

1-800-370-6180 • carpenterbus.com

BOWLING UNITED INDUSTRIES
Manufacturers of Lights, Baptisries, Steeples
www.BUchurch.com
1-800-446-7400
P.O. Box 2250 • Danville, Virginia 24541

CLASSIFIED

MINISTRY — PASTOR

Coronado Baptist Church, a new fellowship, is seeking a pastor for our traditional, kingdom-focused church. Resumes should be sent to Pastor Search Committee, PMB 316, 4501 N. Hwy. 7, Suite #8, Hot Springs Village, AR 71909.

♦ ♦ ♦ ♦

First Baptist Church, Monterey, Tenn., is now accepting resumes for a full-time pastor position. Please send resume to Monterey First Baptist Church, 106 N Chestnut St., Monterey, TN 38574. Post to the attention of Sonny Gilpatrick.

MINISTRY — MUSIC

Worship Leader/Music Minister, Inglewood Baptist Church, 3901 Gallatin Pike, Nashville, TN 37216. Apply by resume, Attn: Search Committee by June 30, 2006.

♦ ♦ ♦ ♦

Vonore Baptist Church needs a part-time music minister. Job description is available at www.vonorebaptistchurch.org. Please submit resumes by July 31 to Music Minister Search Committee, Vonore Baptist Church, P.O. Box 308, Vonore, TN 37885.

♦ ♦ ♦ ♦

Part-time minister of music position opening at Grassland Heights Baptist Church, Franklin, Tenn. Please send resume to Minister of Music Search Committee, 2315 Hillsboro Rd., Franklin, TN 37069 or e-mail to ghbc1@bellsouth.net.

♦ ♦ ♦ ♦

Full-time minister of music position available at First Baptist Church, Madison, Miss. Please send resumes to First Baptist Church, Attention: Shari Hurt, P.O. Box 400, Madison, MS 39130.

CLASSIFIED

MINISTRY — COMBINATION

Director of music ministries and Christian education, full-time. Salary to be negotiated. Applications now being accepted. Send resume to Eastanallee Baptist Church, Attn: Personnel Committee, P.O. Box 3148, Riceville, TN 37370 or call (423) 462-2620. For more information, see our web site www.eastanallee.com.

MINISTRY — CHILDREN

We are searching for God's person to fill our full-time minister to preschoolers and children at Bellevue Baptist Church, Nashville, Tenn. Please send resume to Dr. Mike Shelton, 7400 Hwy. 70S, Nashville, TN 37221 or by e-mail at pastor@bellevuebaptist.com.

Affordable Beachside Vacation Condos

www.gulfshorescondos.com
All size units available, Summer Special
2 night weekend, \$225.00; 4 week-nights, \$430.00 Efficiency Unit
(2 Adults, 2 Kids) Good 5-26 thru 8-6
(205) 556-0368 or (205) 554-1524

Staying the Course

2006 Pastor's Retreat

Aug. 7-10, 2006

Carson Springs Baptist

Conference Center

Newport, TN

For information go to

www.tnbaptist.org

Conversational English Workshop

There will be a 14-hour Conversational English Workshop on July 14-16, 2006 at the Tennessee Baptist Convention building. The times for this workshop will be Friday, 6-9 p.m.; Saturday, 8:30 a.m.-4:30 p.m.; and Sunday, 1:30-4:30 p.m. There is a \$25 registration fee for this workshop. The deadline for registration is July 12. Certification will be provided to those who attend all sessions and complete given assignments. To register or request additional information, please contact Tim Hill or Aurie Nin at the Tennessee Baptist Convention, (615) 371-7916 or go to our web site at www.tnbaptist.org/events.

Last Call!

YELLOWSTONE SPECIAL

August 5-20, 2006

Leave from Centre, Alabama

Visit the Lincoln-Tallman Restorations, Tommy Bartlett Show, House on the Rock, Twin Cities Tour, Runestone Museum, Little Big Horn Battlefield Monument, Tour of Yellowstone, attend a rodeo, Corn Palace, Patee Museum ... and more!

\$2095 per person double

Transportation, lodging, 28 meals, all activities included. For reservations and detailed itinerary please call:

D & S Tours, Inc.

1-800-932-5441

We will provide you with a room the night before at no additional charge! Call today!

Southern Hospitality

Whether you're planning a retreat for 10 or a conference for 1,000, The Legacy Center offers beautifully decorated rooms and suites, modern meeting space, friendly service, plus something no other conference center can provide: Southern Seminary.

Located on the historic campus of The Southern Baptist Theological Seminary in Louisville, Ky., The Legacy Center allows you to enjoy the benefits of a world-class conference center and one of the world's largest theological seminaries.

Come and experience the difference.

LEGACY CENTER
Retreats and Conferences
The Southern Baptist Theological Seminary

2825 Lexington Rd • Louisville, KY 40280 • 1-877-444-SBTS
www.legacycenteratsouthern.com • Email: legacycenter@sbs.edu

heart talk

Reflections on a dad

By James Porch

A child of tenant parents in hard times, veteran of the blood, sweat, cold, filth, and atrocity of World War I, survivor of the Great Depression in Mississippi, he labored daily never allowing his physical affliction to limit his work. And, in all, he came through.

I believe those life features bequeathed from father to son have continued to influence my life. His life perseverance greatly affects my conviction concerning endurance, even today.

I cannot recall him ever using the term "success," nor at any time through his life did he court success. Let's face it, a blacksmith shop in Mississippi in the 20th century offered little to nurture success. In fact, such hard work would not offer much glamour in any century. Instead, my father's message in life centered most around effective living. Dad's passion for life fed off of effective hard work. Actually, for an extended season, he qualified for welfare or commodities (food rations given once a month at the county courthouse). But no way would he accept such charity, and his reason did not include pride. He avowed tenaciously a heart and head connection that able folk can make it through hard work. After all, most everyone around us shared the same hard times. As a child, teenager, and young man, hard times taught him the essential of effective living for survival. Our little town of less than a thousand people had at one time included five blacksmith shops all in competition with him. Once I inquired as to how he outlasted the other four, and he replied with a quick three word answer — "good, hard work."



PORCH

Dad knew that the man who came to his shop usually had an immediate need. The farmer's work for the day could not continue until Dad had repaired his plows, re-shrunk a wagon tire, shod a mule, set and sharpened logging tongs, sharpened a saw, built a wagon axle, or manufactured a Pittman rod for a horse-drawn mower. His work had to be right, accurate, and in essence, effective. He valued the confidence of those who came to his shop.

I recall men covered in the dirt and sweat of honest labor standing by Dad and holding a broken farm implement and saying, "Mr. Milton, I can't pay you until I bring in my crop." Such an expression seemed to prompt the following thought process with Dad. "He's down, can't plow, can't bale hay or cultivate, and his ability to get on back to the field is in my hands." Then followed the usual response as Dad reached for the broken tool and said, "Let me see what I can do."

At day's end, unable to write or read, Dad would tell Mamma how to record the work entries and cost in an old ledger book. Later on he gave me that task. After he died, I went through the book. Evidently, for many the crop never came in.

I never heard him, in his words, "dun" a person for a bill. Simply, he fixed their tools and they knew the charge.

Linked to the land, Dad and his customers enjoyed a brotherhood of hard work and a work ethic born out of a survivor mentality. If we work hard, we eat better.

I'm writing this reflection as Father's Day draws near. Once again I celebrate the good stock I came from. Most of Dad's lessons came over to me nearly 50 years ago. They remain vivid life-lessons, and hardly a day passes that his nurture escapes me.

Thanks, "Big Milton," for "training me up." □ — Porch is executive director-treasurer of the Tennessee Baptist Convention.

Philip: faith leads to witnessing

By Matt Cannon

Focal Passage: Acts 8:26-40

It is interesting to observe the way that some professing Christians view their faith and salvation. Some seem to see it as a license to sin: they feel that since they said a prayer of salvation, they can go out and do whatever they want. Others see it as a license to sit: their spot in Heaven is reserved and there is no need to do anything else to reach others with the gospel. However, the best way to view it is as a license to serve: faith should lead to serving others through witnessing.

Acts 8:26-29. This passage is a wonderful display of God speaking to someone with orders to go and witness. Unfortunately, there are some that would say that since the Lord has never spoken orders to witness directly to them, then they are under no obligation to do so.

This attitude is absolutely wrong and detrimental to the cause of Christ. We are all commanded by the words of Jesus to "go ye therefore and teach all nations." While we will occasionally have a deep burden to witness to a particular person, we should never let the lack of a verbal order keep us from obeying the clear teaching of Scripture.

It is also interesting to see that originally Philip had no idea what he was getting into, but there is no

indication of worry on his part. He was simply told to go. We need to be the same and allow the Lord to lead our lives and trust in Him without worry. God will take care of the details.

Acts 8:30-35. The first verse in this section indicates that Philip hurried to get to the Ethiopian man. I've seen many church outreach/visitation programs that faltered because they severely lacked this type of enthusiasm. Enthusiasm in evangelism is contagious. Show others how excited you are and they will possibly join in.

It is also important to know that while God was telling Philip to go to the Ethiopian, God was also working on the Ethiopian. It was no coincidence that the man was reading Isaiah 53:7-8 at the exact moment Philip came to him. As we witness, we should always trust in the sovereignty of our Lord.

Even though the man was reading God's Word, he did not really understand what it meant. Philip took the opportunity to explain it to him and tell him of the good news of Jesus. There are ample opportunities for us to spread the gospel and show the love of Christ. We must be ready and willing to make the most of the opportunities we have.

Philip was faced with the task of sharing the gospel to someone very different from him in a very different place. Some people that we

Sunday School Lesson
Family Bible Series
June 18

come in contact with may not talk, or act like us. However, they all need the same thing: Jesus.

Acts 8:36-40. When the Ethiopian came upon some water, the Ethiopian wanted to know what kept him from being baptized. In this statement we can see the impact of the testimony of baptism. He had obviously seen others be baptized and wanted to know why he could not be.

Baptism is not just a ritual we go through. It is the outward witness of the inward reality that our sins are washed away.

Philip let the man know that he was baptized required belief in Christ. When the man expressed his belief, he was baptized.

One fault that some churches have is that we spend a lot of time and energy trying to get someone saved, but very little time and energy leading them to obedience. They profess faith in Christ but they led the new convert to obey baptism. We should take them from this and strive to merge new believers by teaching them the importance of being a witness. Cannon is bivocational pastor, Cardiff Baptist Church, Rockledge, FL.

Acknowledge that life seems unfair

By Randall Adkisson

Focal Passage: Job 15:1-21:34

Unfair! Unfair! Unfair! Touring the Mississippi Gulf Coast this week with our youth choir, the question of suffering's fairness arose. Churches were completely destroyed. Homes, even entire communities, were washed away by Katrina's rage. Certainly, there seemed to be no distinction between the "righteous" and the "unrighteous" when it came to suffering loss.

Job addressed tough questions about suffering to his friends and his God. Life is full of unanswerable questions, especially when suffering is observed or experienced. Job's questions remind us that God does not hate us, berate us, or abandon us when we ask tough questions about life's tough issues. Indeed, God encourages our questions. *If any of you lacks wisdom, let him ask of God, who gives to all men generously and without reproach, and it will be given to him* (James 1:5).

Crises brings growth. God is more interested in our character than our comfort. This truth is often neglected in the ease of modern conveniences. Job and his friends were forced by suffering to re-examine their understanding of God and providence. They had taken for granted that good and evil were fully recompensed during one's lifetime. If one sinned, he or she suffered immediately. If one walked righteously, he or she received material and physical reward.

Now, Job was suffering for no apparent reason. His friends concluded he was guilty of hidden sin. God was punishing him. But Job had examined his life and found no cause for God's judgment. Was he blind or were they?

The disciples asked, *Who sinned, this man or his parents, that he was born blind?* Jesus answered, *Neither, it was for God's purpose* (John 9:2-3).

We may not understand suffering's reason, but God will be clearly and completely cleared of any wrongdoing. *God cannot be tempted by evil, and He Himself does not tempt anyone* (James 1:13).

We may not understand the purpose and meaning of our suffering or another's. Yet, as we struggle to understand, suffering becomes our tutor of faith.

In grappling with suffering Job came to the assurance of eternity (19:25-27). Traditional theology had no clear place for eternal existence of the human soul. In wrestling with his plight, Job began to understand and articulate the biblical doctrine of resurrection and future judgment.

The shortness of life's span is not the final arbitrator of justice. Evil may prosper on the earth. Yet, there will be a final judgment. Then man will face perfect recompense: grace or condemnation (Revelations 20:12).

Reason or revelation. As Job pondered his plight he realized that his long-standing beliefs were built upon tradition rather than revelation. He had accepted the seemingly logical, but flawed teach-

Sunday School Lesson
Explore the Bible
June 18

ings of his community. They were taught by the elders and by all (15:10). Still, in light of revelation, the teaching was wrong.

We must be vigilant upon the revelation of God rather than tradition, even when tradition is long held and embraced. Baptists identify themselves as "people of the Bible," but too often our battles center upon traditionally held beliefs rather than biblically-based theology.

Every generation, indeed every believer, is responsible to search the Scriptures. Our traditions of "obvious truth" must be examined as closely as the obvious truths of Eliphaz, Bildad, and Zophar. Intergenerational church arguments, and doctrinal infighting are based upon traditions and human applications rather than upon God's clear revelation.

My Redeemer is faithful and true. In Job's suffering I learn to embrace a divine Redeemer too, we must embrace our Redeemer.

We can be assured that the one who gave His life upon the cross because of His great love will not abandon us to injustice. Though we may not understand the suffering, we can trust Him fully. Adkisson is pastor of First Baptist Church, Cookeville, TN.

3C aid to feed 5,000 families in Indonesia

Baptist Press

YOGYAKARTA, Indonesia — Southern Baptist relief funds will soon provide food for more than 5,400 families affected by May 27 earthquake in Indonesia's central island of Java.

As the death toll topped 100 and estimates of homeless survivors ranged into the hundreds of thousands, Southern Baptist relief specialists joined other aid workers on the scene. They immediately began feeding 500 survivors while assessing needs in the area and meeting with other relief groups.

A 30-day plan of action is in place to provide food for a large portion of the affected population through 11 command centers scattered throughout the ruins of the area, a relief worker reported. An initial \$50,000 (in South-Asian dollars) in Southern Baptist relief funds has been committed to the effort. It will go far in providing for basic food needs of the victims. This will assist more than 5,000 families per day.

Critical needs include nutritionally specialized food for all children, pregnant and nursing women, and people who already were malnourished before the earthquake, said Lip Monroe (name changed for security reasons), Southern Baptist disaster response coordinator for the Pacific Rim. Monroe plans to move food

81 percent say nation's moral values getting worse

Baptist Press

NASHVILLE — More than eight in 10 Americans say the country's moral values are getting worse, although Democrats and Republicans differ greatly on what specifically is morally acceptable and what is morally wrong, a new Gallup poll shows.

The 81 percent of adults who say the nation's "state of moral values" is getting worse is a record high for the question, which was first asked in 2002. It registered at 67 percent in each of the first two years and 77 percent in 2004 and 2005 before inching even higher this year.

Only 11 percent of Americans say the nation's moral values are getting better.

The 10-point spike between May 2003 and May 2004 (when the polls were conducted) came during a time in which "gay marriage" was legalized in Massachusetts and several Canadian provinces, Janet Jackson was exposed on nationwide television during the Super Bowl, and the story broke about abuses at the Abu Ghraib prison in Iraq.

The increase in pessimism about morality since 2002-03 is seen most among Republicans (a 16-point increase) and independents (an 18-point jump) and less among Democrats (a 6-point jump).

On another question, in describing the situation "right now" in America, 85 percent of Americans rate the "state of moral values" as fair or poor. Forty-two percent say they are poor, 43 percent fair. All of those stats are new highs. Only 14 percent of Americans (a new low) say the state of

morality is excellent or good.

But Republicans and Democrats differ widely on what is and is not morally permissible:

- 51 percent of all Americans say homosexual relations are "morally wrong" and 44 percent say they're "morally acceptable." But Democrats are much more likely to say homosexual relations are OK — 53 percent say they're morally permissible, while only 36 percent of Republicans say the same.

- 43 percent of Americans say abortion is acceptable, 44 percent say it's wrong. (It's the first time since 2001 that the percentage of "morally wrong" answers fell below 50 percent.) Fifty-three percent of Democrats say abortion is OK, although only 30 percent of Republicans say so.

- 71 percent of adults say the death penalty is morally acceptable, although Democrats (63 percent) and Republicans (82 percent) disagree somewhat on its permissibility.

- 61 percent of Americans say embryonic stem cell research is OK. (The question did not note that the embryos are destroyed, a fact that pro-lifers say can change a poll's outcome.) Sixty-nine percent of Democrats say it's morally acceptable, while 53 percent of Republicans say the same.

Following are other issues included in the poll, the percentage of people who say something is morally permissible and the numbers for both Democrats and Republicans:

- Death penalty (71 percent of all

Americans say it's morally acceptable; Democrats, 63 percent; Republicans, 82 percent).

- Divorce (67 percent; Democrats, 71 percent; Republicans, 59 percent).

- Buying and wearing clothing made of animal fur (62 percent; Democrats, 55 percent; Republicans, 75 percent).

- Medical research using stem cells obtained from human embryos (61 percent; Democrats, 69 percent; Republicans, 53 percent).

- Medical testing on animals (61 percent; Democrats, 56 percent; Republicans, 69 percent).

- Gambling (60 percent; Democrats, 65 percent; Republicans, 54 percent).

- Sex between an unmarried man and woman (59 percent; Democrats, 65 percent; Republicans, 50 percent).

- Having a baby outside of marriage (51 percent; Democrats, 57 percent; Republicans, 43 percent).

- Doctor-assisted suicide (50 percent; Democrats, 53 percent; Republicans, 45 percent).

- Polygamy, when one husband has more than one wife at the same time (5 percent; Democrats, 4 percent; Republicans, 5 percent).

- Suicide (15 percent; Democrats, 18 percent; Republicans, 12 percent).

- Married men and women having an affair (4 percent; Democrats, 5 percent; Republicans, 3 percent).

The poll of 1,002 adults was conducted May 8-11 and is part of Gallup's annual Values and Beliefs survey. □

supplies from other areas of Indonesia to ensure the neediest survivors "get what is needed," he said.

A six-member volunteer team sent by California Baptists' disaster relief office was expected to arrive in the area June 4 to assist in food distribution and other needs. The potential need for additional volunteers is being assessed as

relief efforts continue. The 6.3-magnitude earthquake struck early May 27 along Java's southern coast, crushing thousands of Indonesians as they slept in their homes and injuring at least 15,000 more. The quake flattened whole villages in the area and destroyed thousands of buildings.

In the Bantul district, one of

the hardest-hit areas, up to 80 percent of homes were destroyed or rendered uninhabitable. Aid shipments and relief workers have flooded into the area, but many villages are short of food and clean water. Some survivors remain in their wrecked homes, hungry and wet from recent rains, refusing to leave despite the lack of shelter and food. □

Guiding viewers to the local church!

THE ENCOURAGING WORD

WITH DR. DON WILTON

Join the network of churches that are building relationships with viewers in their own cities who have made decisions while watching The Encouraging Word.

I experienced this first hand last winter when Dr. Wilton challenged my church members to give on the day we were closed due to snow. As The Encouraging Word was broadcast, Dr. Wilton showed his true color. He insisted that the viewers stop what they were doing and give to their local church. We received a great financial blessing in the mail later that week. Over the two Sundays we were showed out, our offerings more than tripled — and no one was in the church. Talk about encouragement!

— Pastor, North Carolina

Salvations, rededications, marriage restorations — all decisions are met with the response "you need to be involved in a local Bible believing Church. Would you like for us to have someone in your area contact you this week?"

**We Evangelize...
You Disciple**

Sundays at Noon EST
on NRB Network

Channel 378 on DIRECTV Satellite

Sundays at 12:30 p.m. EST
on The Inspiration Network

Cable Channel 72 in Memphis

Tuesdays at 5:30 p.m. EST
on Daystar Network

Channel 369 on DIRECTV Satellite

Or go to www.TheEncouragingWord.org to find a time and station near you!
For more information call toll free 1-866-899-WORD



Tennessee Baptist Fellowship of the Blind Retreat

July 14-16, 2006

Carson Springs Conference Center
Newport, TN

Theme: "Joy In Sharing Jesus"

Cost: \$120 — one person per room
\$95 — two persons
\$80 — three persons

\$15 round trip transportation Nashville — Newport

Conference leaders:

Mark LaRue and Beverly Smothers

Ministry: Samaritan House homeless ministry
at Carson-Newman
(pack hygiene kits, and prayer walk on campus ...)

Contact: Sharon Bragg (615-884-1317)
or tnblindfellowship@yahoo.com

Retreat is open to blind/low vision or sighted persons who are interested in learning about blindness/low vision ministry. Join TBFB for an awesome weekend of fun, music, ministry, and growth.

Leaders

◆ Glenwood Baptist Church, Nashville, called **Carl Hoffman** as pastor, effective June 1. He previously worked for LifeWay Christian Resources, Nashville. Hoffman also has served as pastor of churches in Florida and Louisiana. He has a doctor of education degree from New Orleans (La.) Baptist Theological Seminary.

◆ Legacy Baptist Church, Indian Mound, has called **Doug Barnes** as interim pastor.

◆ New Salem Baptist Church, Clinton, has called **Don Long** as its pastor.

◆ First Baptist Church, Dyer, has called **DeWayne Goodgine** as pastor. He previously was minister of youth/recreation, First Baptist Church, Bolivar.

Maple Springs, others help sick child

For Baptist and Reflector

MEDON — The Woman's Missionary Union of Maple Springs Baptist Church here and other members of the church and of Mercer Baptist Church, Mercer, are trying to help a sick child.

Samantha Star Lowery, 5, of Uptonville has a kind of leukemia which can be characterized as cancer of the blood. She is a patient of St. Jude Research Hospital, Memphis.

Her doctors have recommended some changes to her family's house and items to be used so she does not get an infection. She needs water purifiers and air purifiers, and the use of a certain kind of vacuum cleaner and cleansers.

Maple Springs Church with help from Mercer Church held a music benefit for the girl on June 3 and raised \$4,009.

Montie Matlock who does construction work has agreed to lead the work on the home. Larry Murphy, director of missions, Madison-Chester/Crockett Baptist Association, Jackson, will mobilize members of the association's men's ministry to do work needed.

To donate, send money to Maple Springs Baptist Church, Samantha Lowery Fund, 155 Maple Springs Rd., Medon, TN 38356.

For more information, contact Maple Springs Church at (731) 935-7033. □

◆ **Mike Gay** has been called as pastor of Malone's Chapel Baptist Church, Alexandria.

◆ **Steven Holland**, youth minister, Woodlawn Baptist Church, Bristol, has resigned to accept a position in Florida.

◆ **Randy Stitt** has resigned as music director, Calvary Baptist Church, Bristol.

◆ **Victor Wallace** has been called as interim pastor, Lovelace Baptist Church, Fall Branch.

◆ **Sam Norrod**, associate pastor of music and education, First Baptist Church, Crossville, has been called to a ministry in Ashland, Ky., effective June 18.

◆ **Dennis Robinson** has been called as pastor, Mt. Zion Baptist church, Vonore.

◆ **Delbert Umphrey**, pastor, Compromise Baptist Church, Philadelphia, for 20 years recently was named the 2006 Bivocational Pastor of the Year of Sweetwater Baptist Association, Madisonville.

Associations

◆ **Beulah Baptist Association**, Union City, will hold a ministers wives retreat July 28-29 titled "PURSEonality on Purpose" at the Old English Inn in Jackson. Guest speaker is Marilyn Mansfield and worship leader is Deanna Freeman. Deadline to register is

July 7. For information contact the association office at (731) 885-2151.

Churches

◆ **First Baptist Church, Dickson**, will hold "What Every Girl Wants," its annual women's conference June 23-24. Lisa Harper will speak and Kim Hill will lead worship. For more information, contact the church at (615) 446-4640 or www.FBCDickson.org.

◆ The combined women's ministry of **First Baptist Church, Dyersburg**, and **First Baptist Church, Newbern**, will hold a Women of Wonder Conference Aug. 12 at the Dyersburg church. Charlene Ann Baumbich, speaker, author, and humorist will present "On Being a Wild Child of God." The event will be held from 9 a.m. to 2 p.m. For more information, contact Nancy Duncan at (731) 286-1420.

◆ **First Baptist Church, Atwood**, will hold its annual homecoming June 25 at 11 a.m. Nathan Pillow will speak. A luncheon will be held after the 11 a.m. worship service. For more information, contact jaclin@charter.net.

◆ **Pine Eden Baptist Church, Crossville**, will hold a Summer Bible Conference June 18-21. Speaking are Bill Stafford, Herb Reavis, Phil Hoskins, David Wilkerson,



PARTICIPATING IN an appreciation banquet for seniors the Salem Baptist Association, based in Liberty, were, from left, man Seber, director of missions; Richard Bray, pastor, First B Church, Woodbury; Cora Erwin of First Church, Woodbury; Linda Fann and Angie Cawthorne, in the background, of Baptist Church, Woodbury. The event drew more than 175 fr association churches to First Church, Woodbury. Bray spoke crowd and Bill Robertson of Elizabeth Chapel Baptist C Smithville, sang. A luncheon also was held, prepared by c members including youth.

Scott Johnson, Brent Sims, and Danny Hinson. For more information, contact (931) 456-0142 or www.pineeden.com.

◆ **Lincoln Heights Baptist Church, Tullahoma**, will send a 21-member team to Morant Bay, Jamaica, on June 30. The team is seeking computers, laptop or desktop, even older models, to take to three Baptist churches there. For more information, contact Kerry Smith at (931) 455-5612 or pastorkerry5@charter.net.

◆ **Gath Baptist Church, McMinnville**, will hold a revival June 25. Morris Anderson, evangelist of Maryville, will speak. For more information, contact Anderson at (865) 984-6982 or morrisanderson@bellsouth.net.

◆ **Mount Zion Baptist Church, Fairview**, will hold homecoming, anniversary, and

rededication activities on 25. The church will b years old. Activities will at 10 a.m. Lunch w served. Afternoon singe be Wilson and Terry S Revival is scheduled Ju 30. Willie Freeman, will For more information Ronald W. Pendergrass, at (931) 670-4960 or (61 0413.

Partnership Missions

◆ Four friends of Baptist Church, Mayna from Rio de Janeiro, recently visited the Phillip King, pastor Church, Maynardville comed Waldemir Nuna yara Nunes, and Rafael from Rio, who visited as the Tennessee/Rio Partnership.



LEADERS OF a meth awareness education service held at Bible Hill Baptist Church, Parsons, pause during the May 14 service. They are, from left, Roy Wyatt, Parsons Police Department and pastor, Darden Baptist Church, Darden; Anthony Alexander, a businessman; Blaine Houchin, a physician; Kevin Cagle, a businessman; and Danny Ray, pastor. **IN PHOTO BELOW**, Houchin gives his presentation to those gathered at the church. "The meth problem is growing to epidemic proportions and education is our greatest weapon against it," said Ray.



Called 'Piece Corps'

Quilters hold baby shower for

For Baptist and Reflector

FAIRFIELD GLADE — The Piece Corps of First Baptist Church here is a group of quilters.

The ladies who are members of the group make quilts and give them to those who are in need, reported Peggy Norris of the church.

The quilts have been given to people who have been through natural disasters. They also are given to ministries which care for children or adults. It is the hope of the group that when a person receives a quilt and learns who gave it to them, they will realize that Jesus loves them and want to learn more about Him.

Recently 11 members of the group held a baby shower

for expectant women tered to by the W Heights Baptist Cer Knox County Baptist ation in Knoxville. S Washam, director of t ter, assisted the Piece in organizing the ever The quilters co baby clothes from m for the shower. Of they made and took q each of the 16 ex mothers. The mothe received a New Testa The Fairfield Glad led games and a men a devotion. The group ed lunch and then pr the gifts.

This was a new ex for the Piece Corps a "felt blessed to have part of this unust reach," reported Nor