

VOLUME XXXIV

JULY, 1939

NUMBER 1

Royal Service



MISS ELMA CURRIN
Associate Secretary of
W.M.U. Young People's Work

PUBLISHED MONTHLY by WOMAN'S MISSIONARY UNION
AUXILIARY to SOUTHERN BAPTIST CONVENTION
1111 Comer Bldg., Birmingham, Ala.

Entered at the post office at Birmingham as second class mail matter. Acceptance for mailing is at special rate of postage provided for in Section 1103, Act of Oct. 3, 1917, authorized June 26, 1918.

EDITORS of ROYAL SERVICE

MISS KATHLEEN MALLORY, Managing Editor
 MRS. F. W. ARMSTRONG
 MISS JULIETTE MATHUR
 MRS. T. M. PITTMAN
 MISS KARRIE U. LITTLEJOHN
 MRS. W. C. HENDERSON
 MRS. H. M. RHODES
 MRS. W. J. COX
 MRS. C. D. CREASMAN
 MRS. W. C. JAMES
 MRS. W. H. GRAY
 MISS INABELLE COLEMAN
 MISS WILLIE JEAN STEWART
 MRS. ELLA B. ROBERTSON

Officers of Woman's Missionary Union.

President	Vice Presidents
MRS. F. W. ARMSTRONG	MRS. J. FURNESS LEE, Ala.
	MRS. W. C. HENDERSON, Ariz.
	MRS. L. M. SITES, Ark.
Executive Secretary	MRS. GEORGE A. ROSS, D.C.
MISS KATHLEEN MALLORY	MRS. ROBERT WALDEN, Fla.
	MRS. FRANK BURNEY, Ga.
Young People's Secretary	MRS. H. R. MOORE, Ill.
MISS JULIETTE MATHUR	MRS. M. H. HIGHLAND, Ky.
	MRS. M. L. JENKINS, La.
Recording Secretary	MRS. EUGENE LEVERING, Md.
MRS. WILFRED C. TYLER	MRS. NEO RICE, Miss.
	MRS. GEORGE McWILLIAMS, Mo.
Assist. Recording Secretary	MRS. O. E. CARMAN, N.M.
MRS. SUMTER LEA, JR.	MRS. I. CLYDE TURNER, N.C.
	MRS. H. B. WILBOYTE, Okla.
	MRS. CHAS. M. GRIFFIN, S.C.
Treasurer	MRS. C. D. CREASMAN, Tenn.
MRS. W. J. COX	MRS. B. A. COFFAS, Tex.
	MRS. G. R. MARTIN, Va.
State Corresponding or Executive Secretaries	State W.M.U. Headquarters
Mrs. Ida M. Stallworth, 127 South Court Street, Montgomery, Ala.	
Mrs. G. D. Crow, Box 1244, Tucson, Ariz.	
Mrs. C. H. Ray, 510 Donaghey Trust Building, Little Rock, Ark.	
Mrs. George A. Ross (Vice President), 1720 Kenyon Street, N.W., Washington, D.C.	
Miss Louise Smith, 207 Rogers Building, Jacksonville, Fla.	
Miss Janice Singleton, 508 in 22 Marietta Street Building, Atlanta, Ga.	
Mrs. John Hathaway, 205 South Normal Street, Carbondale, Ill.	
Miss Mary Nelle Lyne, 205 East Chestnut Street, Louisville, Ky.	
Miss Hannah E. Reynolds, 1220 Washington Avenue, New Orleans, La.	
Mrs. Samuel R. Barnes, 405 Hearst Tower Building, Baltimore, Md.	
Miss Frances Traylor, Baptist Building, Jackson, Miss.	
Mrs. C. M. Truax, 1023 Grand Avenue, Kansas City, Mo.	
	215 Recorder Building, Raleigh, N.C.
Mrs. Berta K. Spooner, 223 1/2 West First Street, Oklahoma City, Okla.	
Miss Vonnice Lance, 1301 Hampton Street, Columbia, S.C.	
Miss Mary Northington, 149 Sixth Avenue, North, Nashville, Tenn.	
Mrs. E. F. Lyon, 705 Burt Building, Dallas, Tex.	
Miss Blanche Sydney White, 633 Central National Bank Building, Richmond, Va.	

W.M.U. Training School

Miss Carrie U. Littlejohn, Principal, 334 East Broadway, Louisville, Ky.

Margaret Fund Chairman

Mrs. H. M. Rhodes, 269 Kenilworth Place, Memphis, Tenn.

Southwide Personal Service Chairman

Mrs. Eureka Whiteker, Cynthiana, Ky.

Southwide Stewardship Chairman

Mrs. Carter Wright, Roanoke, Ala.

Southwide Mission Study Chairman

Mrs. Una Roberts Lawrence, 4111 Kenwood Boulevard, Kansas City, Mo.

W.M.U. Representatives

Mrs. R. K. Redwine, 1436 Eleventh Avenue, Hickory, N.C.
 Miss Mary Christian, 334 E. Broadway, Louisville, Ky.
 Mrs. Carter Wright, Roanoke, Ala.

W.M.U. Headquarters, 1111 Comer Bldg., Birmingham, Ala.

Royal Service

ROYAL SERVICE, successor to *Our Mission Fields*, is the official organ of Woman's Missionary Union, Auxiliary to Southern Baptist Convention. Published Monthly—No Club Rates

SUBSCRIPTION RATES: 50 CENTS PER YEAR, SINGLE COPY 8 CENTS
 Please remit by money order, cashier's check or registered mail.
 Do not send stamps unless unavoidable.

Money orders and cashier's checks should be made payable to Woman's Missionary Union. If must send stamps, kindly send as far as possible 2 cent or 3 cent ones (*2c ones preferred*). Do not enclose money unless letter is registered. In order to secure prompt delivery please write name and address plainly, stating whether subscription is a new one or a renewal and with what month the subscription is to begin. No renewal or new subscription can be accepted for less than a year at 50 cents a year. Please remit with order, sending it to ROYAL SERVICE, 1111 Comer Bldg., Birmingham, Ala. Kindly send new address before moving.

CONTENTS

Revival	
A-1 CHURCHES	8-15
ALLIANCE, BAPTIST WORLD	5, 36
ANNOUNCEMENTS	1, 4, 6-15, 12, 35, 36
BIBLE STUDY	19
BOOK REVIEWS	15
CALENDAR OF PRAYER	17-18
CIRCLE PLANS	20, 21
EDITORIAL	4
FAMILY ALTAR	16
IN MEMORIAM	32
LEAFLETS	3
MARGARET FUND	34
MISSION STUDY	20
OUR YOUNG PEOPLE	1, 4, 8-15, 33, 34
"PRAY YE"	16
PROGRAM—B.W.C. PLANS	21-32
SUMMER ASSEMBLIES	6, 7
TRAINING SCHOOL	33
TREASURER'S REPORT	35
RIDGECREST, MISSION WEEKS	7



If there is a red mark in this corner, then the light is flashing "Renew!" because your subscription expires with this issue. Please renew as soon as you see this red mark. See directions at top of this page.

MONTHLY MISSIONARY TOPIC

Carrying Out the Great Commission in the Homeland

SUGGESTED LEAFLETS—Supplemental Helps for W.M.S. Program JULY—Carrying Out the Great Commission in the Homeland

A People of Promise	3c
As Thy Servant Was Busy Here and There	2c
Finding the Larger Life	3c
From Mother's Club to W.M.S.	3c
Is There a Frontier?	3c
Meditations of a Lonely Country Road	3c
Opportunity through Industry to Win Men	3c
Our Land for Christ (Poem)	2c
Peter Pole	3c
How Home Missions Came Home to Helen (Play: 7 Women, 5 Girls, 2 Boys; Time about 35 Minutes)	10c

For orders amounting to as much as 50c, please remit by money order, cashier's check or registered mail. Money orders and cashier's checks should be made payable to Woman's Missionary Union. Stamps are acceptable in payment for small orders but please try to send 2 cent or 3 cent stamps (*2c ones preferred*). Do not enclose money unless letter is registered. Kindly remit with order, sending it to W.M.U. Literature Department, 1111 Comer Bldg., Birmingham, Alabama.

EDITORIAL

ASSOCIATE W.M.U. YOUNG PEOPLE'S SECRETARY

Mrs. F. W. Armstrong, President W.M.U.

ON MAY 15, 1939, the Executive Committee of Woman's Missionary Union meeting in Oklahoma City elected Miss Elna Currin as associate young people's secretary. North Carolina is her native state. Reared in a devout Christian home, happy in the companionship of two brothers and five sisters all of whom went regularly to the country church, which was the center of social and spiritual life for the community, she had a normal and interesting childhood which prepared her for all of her later life experiences. She remembers vividly the "Card Class" in the large country Sunday school and the interesting Bible stories which quickened her desire to read later Hurlbut's *Story of the Bible*, two copies of which were completely worn out by this lively family of eight. A missionary-hearted mother subscribed for *World Comrades* for her children. It was eagerly read and its missionary stories made a deep impression on the mind of this middle child in the family. One Sunday someone thought to start a Sunbeam Band. The picture on the cover of *World Comrades* was of Chinese children and the program about China opened a new world to this eager alert child.

Country school, rural high school, Louisburg Junior College and then, her mother's dream fulfilled, Meredith College from which she was graduated in 1932. Here as an active member of College Y.W.A. missions became very real and very personal. It was a personal service project, a service in the state penitentiary conducted by this College Y.W.A., that brought dedication of life to definite Christian service. In 1935 Miss Currin went to Y.W.A. Camp, at Ridgecrest, as assistant director of recreation. She had been teaching school but was not completely happy in it. The Camp and its atmosphere, the helpful counsel of her sister Mary, young people's secretary for North Carolina, and other friends led her to choose the W.M.U. Training School, where she was a student 1935-1937. She was chosen "Chairman of Social Activities" and was in all respects an outstanding student. Her natural gifts for leadership were developed perceptibly during her years in the Training School.

Her summer vacation periods through college days and Training School were filled with varied religious activities, including helping with Daily Vacation Bible Schools, student revivals and W.M.U. field work. It was while she was engaged in W.M.U. work, for which she had developed a deep love, that she was called to be W.M.U. young people's secretary for the state of Missouri to which position she was elected in July of 1938. Her leadership gifts and personality immediately won for her a large place in the esteem and affection of her Missouri co-laborers. Her year of service with them has enriched her life and has served to deepen her joy in having found her place of happiest and most useful service in the field of W.M.U.

We take pleasure in presenting Miss Currin to our more than 715,000 members of W.M.U. as the associate to Miss Juliette Mather, young people's secretary. She will help in all phases of the growing work of "stimulating the missionary spirit and the grace of giving among the young people" of southern Baptist churches. Her varied gifts and qualifications give promise of abundantly fruitful service. We ask your prayer on her behalf and for the southwide work upon which she entered the first of June.



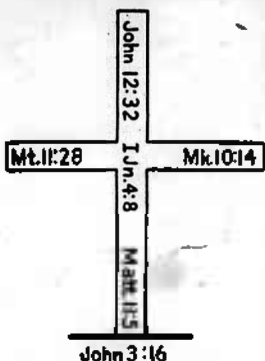
SOUTHWIDE BAPTIST REVIVAL



Roland Q. Leavell

Supt. of Evangelism, Home Mission Board

WORLD SIGNIFICANCE of SOUTHWIDE BAPTIST REVIVAL



The world has shrunk up! Today it is but a small neighborhood. Columbus required seventy days to cross the Atlantic; Howard Hughes flew around the world in 3 days, 19 hours, 8 minutes and 10 seconds. Hitler screams, and he is heard on the ships in the South Pacific and in all the nations of the earth. In this "little old world" a spiritual power so dynamic as the Southwide Baptist Revival must have world-wide significance.

Christ's Second Campaign—Christianity right now is in its second serious campaign to win the world. Christ's first campaign was waged during the first three centuries A.D. The Roman world was made at least nominally Christian. This was done by the Holy Spirit and the missionaries. Christ's second campaign to spread Christianity throughout the world began about a century and a half ago with the missionary efforts of William Carey of England and Adoniram Judson of America. In Christ's second campaign the Christian forces have facilities infinitely greater than those of the first campaign. The one thing yet needed for success in Christ's second campaign is more and better Christian character. We need more spiritually-minded, consecrated, Christlike soul winners, Christian stewards and gifted volunteers for missionary service.

Remarkable Record of 1938—A mighty spiritual advance during 1938 is indicated by the evangelistic results in the Southern Baptist Convention. The number of baptisms increased from 204,567 in 1937 to 256,814 in 1938. This is the greatest year in soul winning that southern Baptists have ever experienced. It is but a foretaste of the greater results which we trust will be attained during 1939.

Unlimited Possibilities for 1939—The year 1939 offers Baptists a Pentecostal opportunity for world-wide soul winning. Pentecost came when "there were dwelling in Jerusalem men from every nation under Heaven". The two world's fairs, one in San Francisco and one in New York, and the Baptist World Alliance in Atlanta, during the summer of 1939, give us also an opportunity for world-wide conquest because people will be gathered here from every nation under Heaven. It is not accidental that these world meetings are being held when America is experiencing a genuine spiritual revival. It is a providential opportunity given to us from Almighty God. May He grant that southern Baptists will be in such a mighty spirit of revival in July that the representatives from the nations of the earth, who gather in Atlanta, will go back to their countries as flaming evangelists of the Gospel of Christ. Southern Baptists, like the Jerusalem Christians did, should pray fervently, witness personally and preach dynamically for the salvation of souls around the world.

Startling Prospects for 1940—Baptists of North America are seeing
(Concluded on Page 6)

SUMMER ASSEMBLIES

MISSISSIPPI

DO you want a vacation and are you planning for one? If so, let me tell you where you can go for a helpful and inexpensive one. If you and your family will attend the Mississippi Baptist Assembly you will relax, forget your worries and come away refreshed.

Good money spenders will no doubt ask the question: "Will I get value received for what I put into it?" If such a question is in your mind, I want to answer it by listing some of the things you will receive from attending the assembly:

- 1—Three wholesome meals each day
- 2—Recreation such as golf, tennis, swimming and directed games for children
- 3—Classes for R.A.'s, G.A.'s, Y.W.A.'s, W.M.S., B.T.U. and Sunday school taught by the most capable of state and southwide workers
- 4—One hour at least each day in Bible taught by one who has made a special study of God's Word and can inspire as well as teach
- 5—All phases of denominational matters discussed by expert lecturers
- 6—Each day interspersed with inspiration, laughter and fun, young getting inspiration from the old and the older people, enthusiasm from the youth
- 7—Morning Watches that will help you to start the day with God's Marching Orders and Vespers that close the day and cause one to say "Praise God from whom all blessings flow!"

Mississippi Baptist Assembly meets at Mississippi Woman's College at Hattiesburg, July 2-7. Make your plans to attend. Go expecting to receive spiritual

blessings and you will not be disappointed.—*Mrs. A. L. Goodrich, Miss.*

MARYLAND

THE twenty-third Assembly of Maryland Baptists will be held at Braddock Heights July 7-14, with the churches of the District of Columbia co-operating. Amid lovely surroundings groups of enthusiastic, purposeful men, women and young people will gather for a week of fellowship, study and recreation. A most comprehensive program directed by Dr. Jos. T. Watts will include Sunday school and B.T.U. work; conferences for pastors and laymen each morning; daily Bible study at the noon-day assembly; the Sunset Prayer Service led by faculty members; and a fine course of lectures by outstanding speakers concluding each evening service. Planned recreation under the leadership of a trained director is a most enjoyable feature of each day.

Maryland W.M.U. has a generous share of responsibility in the assembly work. At the early morning conference W.M.U. work will be discussed. The following classes are scheduled: W.M.S. class, a class each for Y.W.A., G.A. and R.A. Miss Carrie U. Littlejohn, principal of W.M.U. Training School, will assist the faculty in making the W.M.U. hour one of information and inspiration. Under the direction of Miss Ruth Williams of Baltimore the usual Y.W.A.-G.A. House Party will be conducted at Valley View Cottage. The R.A. Camp with its diversified program of study and recreation will be in charge of Rev. J. C. Ledbetter of Havre de Grace as Camp Director.—*Mrs. S. R. Barnes, Md.*

REVIVAL (Concluded from Page 5)

the far-reaching power of the Southwide Baptist Revival during 1939. The presidents of the twenty-one organized Baptist groups of this continent and their evangelistic leaders decided to meet in Chicago to pray through and to plan for a far-reaching, coordinated, cooperative, comprehensive Baptist advance in 1940 to stretch from Alaska to Cuba, from the Panama Canal to the North Pole. It can girdle the world in power for Christ. God grant us success in Christ's second campaign!

RIDGECREST MISSIONS WEEKS

FOREIGN MISSION WEEK

By R. S. Jones

FOREIGN Mission Week at Ridgecrest, N. C., is scheduled for July 30th to August 4th. The conference opens two days after the closing of the Baptist World Alliance, and we are able to bring a good number of the Alliance speakers to Ridgecrest to enrich our program. Missionaries from the various countries and the following native Christians have accepted our invitation to speak at Ridgecrest: Rev. Samuel Vila, *Spain*; Rev. Bela Udvarnok, *Hungary*; Rev. Lucatia Sezonov, *Rumania*; Rev. Ignazio Rivera, *Italy*; Rev. Honorio Espinoza, *Chile*; Rev. Djolma Cunha, *Brazil*.

It will make the hearts of southern Baptists rejoice to hear these men who are products of our missionary enterprise. Dr. J. H. Rushbrooke of London, England, will speak on Sunday, July 30th, at the morning worship hour. Dr. C. Roy Angel, pastor of the Central Baptist Church, Miami, Fla., will be the vesper service speaker each evening from Sunday through Friday. Dr. Baker J. Cauthen, recently appointed missionary to China, will direct the morning watch each day of the conference.

Make your plans to go from Atlanta to Ridgecrest and attend the greatest foreign mission conference ever held by southern Baptists. Reservations may be made by writing to Mr. Perry Morgan, Ridgecrest, N. C.

CROWNING CHRIST at HOME MISSION CONFERENCE

By Joe W. Burton

MISSIONARY experiences, panel conferences by outstanding leaders and daily inspirational addresses will feature the varied program of the Home Missions Conference at Ridgecrest, August 6-11, according to Dr. J. B. Lawrence. Theme for the week, around which all of the addresses and conferences will be built, is "Crowning Christ".

"The new daily schedule will allow more time for the missionaries to tell about the thrilling experiences on their fields", Doctor Lawrence points out. "Before breakfast each morning there will be a missionary heart message from a missionary; the first address of the morning session will be from a missionary; and two missionaries will speak each evening".

The noonday message each day will be brought by Dr. M. E. Dodd of Shreveport. Vesper services each evening will be conducted by Dr. W. R. White of Oklahoma City. These messages will contribute to the general theme of the conference.

The panel conferences will include: "Crowning Christ in the Denominational Life" conducted by Dr. J. E. Dillard, promotional secretary of Executive Committee of Southern Baptist Convention; "Crowning Christ in Soul Winning" by Dr. Roland Q. Leavell, superintendent of evangelism, Home Mission Board; "Crowning Christ in Woman's Missionary Union" by Miss Juliette Mather, young people's secretary, southern W.M.U.; "Crowning Christ in Christian Education" by Dr. J. M. Price of Southwestern Seminary, Fort Worth; and "Crowning Christ in Our Cities" by Rev. C. J. St. John of Bowery Mission, New York City.

CHURCHES HAVING A-1 FULL GRADED W.M.U.

(Names of presidents and pastors are for calendar year 1938. The small figure preceding any name indicates the number of years the church has maintained its A-1 record. A star (*) to right of a name shows that church was also "outstanding" as to stewardship this past year. The list of "outstanding" churches will be published in the August issue of this magazine.)

REMARKABLE records were made during the Golden Jubilee Year as to A-1 Full Graded W.M.U.'s. There were 102 S. B. C. churches, a gain of 54, that joined the ranks of those that during the year maintained an A-1 Full Graded W.M.U. The total of these standard missionary churches attained the remarkable record of 417, which is an annual gain of 106. Particularly honored in their midst are five churches that have been A-1 for the past 14 consecutive years, two that have been so for 13, two others for 12, three for eleven and eight for 10. "Still achieving" are 3 that have won this highest honor for the past 9 years, 7 for eight, 9 for seven, 14 for six, 23 for five, 37 for four, 87 for three, 87 for two. Surely these records give an extra glow to the Union's Golden Jubilee.

Church	W.M.S. President	Pastor
Alabama		
10 Abbeville	Mrs. R. K. Stokes	Rev. F. W. Tomberlin
4 Bessemer, First	Mrs. George Ross	
2 Bessemer, South Highland	Mrs. J. H. McKelvey	Rev. T. H. King
1 Bethselem*	Mrs. C. L. Wilkins	Rev. W. P. Lowery
1 Birmingham, Boyles	Mrs. A. Carlson	Rev. L. L. Hearn
1 Birmingham, Bush Hills	Mrs. W. J. Weaver	Rev. Cecil S. Wood
2 Birmingham, Central Park	Mrs. George Curlee	Rev. E. Floyd Olive
1 Birmingham, Ensey First	Mrs. F. M. Downs	Rev. Claude B. Miller
3 Birmingham, First	Mrs. E. P. Jones	Rev. John L. Slaughter
2 Birmingham, Hunter Street	Mrs. D. E. Williams	Rev. E. B. Edington
2 Birmingham, Pike Avenue	Mrs. Carl Jacobs	Rev. Theo. Harris
1 Birmingham, Pratt City	Mrs. E. E. Cole	Rev. J. L. Aders
2 Birmingham, Ruhama	Mrs. J. H. Hudgins	Rev. J. C. Stivander
2 Birmingham, Southside	Mrs. Frank Sanford	Rev. John H. Buchanan
2 Brent	Mrs. E. W. Pierson	Rev. W. P. Wilks
4 Chabom*	Mrs. R. C. Jenkins	Rev. Mack Jones
2 Elba	Mrs. F. M. Harper	Rev. J. A. Timmerman
1 Ft. Payne, First	Mrs. C. D. Killian	Rev. B. R. Justice
1 Goodwater	Mrs. J. S. Fleming	Rev. J. O. Colley
3 Lanett	Mrs. George Heard	Rev. Sam L. Heath
2 Langdale	Mrs. Joe Nichols	Rev. L. E. Kelly
1 Mobile, Dauphin Way	Mrs. R. A. Wallace	Rev. C. B. Arndall
1 Mobile, Spring Hill Avenue	Mrs. L. F. Maynard	Rev. L. F. Maynard
4 Monroeville	Mrs. J. F. Finkles	Rev. W. H. Black
2 Montgomery, Capitol Heights	Mrs. Eva W. Grant	Rev. R. C. Edge
1 Mt. Pleasant	Mrs. W. L. Baggett	Rev. A. W. Barker
4 Opp	Mrs. H. S. Myers	Rev. Earle Trent
1 Phenix City, Central	Mrs. C. B. Gullatt	Rev. B. S. Franklin
1 Rockford	Mrs. H. A. Toel	Rev. J. D. Pickens
9 Selma, Central	Mrs. John Cunningham	Rev. John Cunningham
1 Sheffield, First	Mrs. M. H. Kidd	Rev. W. P. Reeves
4 Sylacauga, Mignon	Mrs. H. B. Ray	Rev. J. E. Berkstresser
1 Tallapoosa	Mrs. B. B. Nelson	Rev. Collis Cunningham
7 Tolbert	Mrs. J. D. Taylor	Rev. D. W. Hodges
2 Union Springs	Mrs. C. L. Gholston	Rev. Richard L. Lyon
1 Wetumpka	Mrs. T. S. Sanford	Rev. Sheppard Bryon
2 York*	Mrs. O. D. Mason	Rev. O. D. Mason
Arizona		
2 Tucson, First Southern	Mrs. R. N. Clark	Rev. V. S. Pipes
Arkansas		
1 Benton	Mrs. J. L. Richardson	Rev. E. C. Brown
2 Bentonville	Mrs. Olin Knight	Rev. L. C. Tedford

Church

- 1 De Witt
- 3 El Dorado, First
- 2 Harrisburg*
- 1 Lake Village*
- 1 Little Rock, Second
- 1 McGehee
- 2 Newport*
- 7 Paris
- 1 Pine Bluff, Calvary
- 6 Pine Bluff, First
- 2 Star City

W.M.S. President

- Mrs. D. M. Harlan
- Mrs. E. J. Drake
- Mrs. George Mouton
- Mrs. John Simms
- Mrs. C. B. Davidson
- Mrs. Clifton Oglesby
- Mrs. Frank Wright
- Mrs. Lewis C. Sadler
- Mrs. J. B. Redmon
- Mrs. J. F. Mullins
- Mrs. C. I. Look

Pastor

- Rev. R. A. Butler
- Rev. C. W. Daniel
- Rev. W. I. Elledge
- Rev. Boyd Baker
- Rev. Calvin B. Waller
- Rev. L. C. Craig
- Rev. C. F. Wilkins
- Rev. E. S. Elliott
- Rev. Ben Wofford
- Rev. Harvey T. Whaley
- Rev. Joe Shaver

Florida

- 1 Clermont, Grace
- 4 Daytona Beach, Calvary*
- 1 Jacksonville, Woodstock Park
- 1 Mt. Olive
- 1 Plant City, First
- 8 West Palm Beach, First
- 3 West Palm Beach, Northwood
- 5 Williston, First

- Mrs. Annie Messer
- Mrs. Bessie Crews
- Mrs. D. H. Horn
- Mrs. C. H. McCullough
- Mrs. M. N. Moody
- Mrs. James Asher
- Mrs. W. F. Treadwell
- Mrs. W. R. Ennis

- Rev. W. L. Hambrick
- Rev. J. M. Anderson
- Rev. C. E. Lubin
- Rev. A. E. Calkins
- Rev. D. F. Sebastian
- Rev. C. H. Bolton
- Rev. J. P. Rodgers
- Rev. Ray Smith

Georgia

- 11 Ailey*
- 4 Atlanta, Capitol View
- 1 Atlanta, Inman Park
- 2 Atlanta, Kirkwood
- 1 Atlanta, Oakhurst
- 2 Bay Branch
- 1 Cartersville, Tabernacle
- 5 Corinth (Middle Asm.)
- 1 Dawson
- 14 Double Heads
- 1 Douglas, First
- 4 Dry Branch (Middle Asm.)
- 2 East Point
- 2 Gainesville, Central
- 2 Goloid*
- 2 Green Fork
- 1 Green Hill
- 14 Greensboro
- 6 Guyton, New Providence
- 5 Guyton, Pine Street*
- 2 Hapeville, First
- 1 Lumber City
- 1 Macon, Cherokee Heights
- 1 Macon, Vineville
- 1 Marietta, First
- 10 Milan
- 15 Millen
- 1 Millen, Oak Hill
- 1 Newton
- 4 Porterdale
- 5 Rome, Maple Street
- 1 Rome, North Broad
- 1 Sardis (Hebron Asm.)
- 1 Savannah, Bull Street
- 3 Summerville
- 14 Sylvania
- 1 Tennille
- 6 Thomaston, First
- 10 Turkey Branch
- 1 Vidalia, First
- 5 Wades*

- Mrs. Harry Riddle
- Mrs. S. D. Austin
- Mrs. Paul S. Etheridge
- Mrs. Wofford Medlock
- Mrs. N. N. Campbell
- Mrs. L. F. Joyner
- Mrs. H. C. Moss
- Mrs. O. L. Williams
- Mrs. J. A. Brim
- Mrs. I. C. Burke
- Mrs. W. F. Bronson
- Mrs. J. F. Cates
- Mrs. R. L. Bowen
- Mrs. T. O. Culpepper
- Mrs. Mark Evans
- Mrs. E. N. Wallace, Jr.
- Mrs. W. F. Chambliss
- Mrs. T. B. Rice
- Mrs. Carl Page
- Mrs. J. J. Shearouse
- Mrs. F. S. French
- Mrs. E. T. Davis
- Mrs. Luther Bloodworth
- Mrs. J. M. Gibson
- Mrs. J. L. Fowler
- Mrs. J. H. Reece
- Mrs. C. B. Landrum
- Mrs. Barney Lightfoot
- Mrs. C. R. Daley
- Mrs. J. B. Williams
- Mrs. Claude Shifflett
- Mrs. O. E. Rutland
- Mrs. Amanda McMullan
- Mrs. S. J. Murrow
- Mrs. H. D. Brown
- Mrs. E. K. Overstreet, Sr.
- Mrs. C. W. Crump
- Mrs. Claude Tidwell
- Mrs. R. L. Archer
- Mrs. T. R. Lee
- Mrs. A. W. Robinson

- Rev. R. L. Robinson
- Rev. W. Lee Cutts
- Rev. S. F. Lowe
- Rev. K. Owen White
- Rev. A. B. Couch
- Rev. W. F. Chambliss
- Rev. G. V. Crowe
- Rev. F. T. Franklin
- Rev. W. H. Barrett
- Rev. Z. M. Leverett
- Rev. Sidney L. Goldfinch
- Rev. H. R. Mitchell
- Rev. W. A. Duncan
- Rev. W. J. Jones
- Rev. Lansing Reddick
- Rev. Walter Brown
- Rev. W. F. Chambliss
- Rev. G. H. Kopp
- Rev. L. P. Loman
- Rev. W. D. Horton
- Rev. Z. E. Barton
- Rev. D. C. Russell
- Rev. J. S. Winn
- Rev. J. E. Sammons
- Rev. G. F. Brown
- Rev. O. A. Grant
- Rev. T. R. Harville
- Rev. P. I. P. Edenfield
- Rev. W. F. Chambliss
- Rev. L. M. Lyda
- Rev. Leslie Garrison
- Rev. O. E. Rutland
- Rev. C. D. Stewart
- Rev. W. A. Tullaferr
- Rev. J. C. Jackson
- Rev. T. S. Boehm
- Rev. W. M. Marshall, Jr.
- Rev. A. B. Hawkes
- Rev. F. T. Franklin
- Rev. Gower Latimer
- Rev. W. J. Carwell

Church	W.M.S. President	Pastor
Illinois		
11 Christopher*	Mrs. A. C. Gibson	Rev. W. D. Berry
1 Harrisburg, McKinley Avenue	Mrs. Eunice Burroughs	Rev. J. A. Musgrave
1 Lawrenceville	Mrs. Roy Winship	Rev. E. H. Zippardt
3 McLeansboro	Mrs. W. N. Wright	Rev. H. R. Moore
3 Salem	Mrs. Ethel Williams	Rev. Seville Borum
Kentucky		
1 Adairville	Mrs. R. H. Fugate	Rev. W. S. Hardin
1 Ashland, Central	Mrs. James Stierle	Rev. G. L. Youman
1 Ashland, First	Mrs. Ethel Hills	Rev. Garis T. Long
1 Ashland, Unity	Mrs. Ralph Greene	Rev. L. H. Tipton
2 Big Bone	Mrs. H. W. Rouse	Rev. R. A. Johnson
7 Cumberland	Mrs. Joe White	Rev. Oscar Davis
2 Elsmere	Mrs. Fred Boiser	Rev. C. B. Coats
1 Eminence	Mrs. Mary Crabb	Rev. John G. Dickson
1 Hopkinsville, First	Mrs. M. H. Tandy	Rev. P. C. Walker
2 Irvine, First	Mrs. H. J. Comley	Rev. W. J. Norton
1 Lebanon Junction, First	Mrs. A. M. Tate	Rev. A. M. Tate
1 Lexington, Immanuel	Mrs. William R. Gabbert	Rev. James T. McNew
6 Liberty	Mrs. R. A. Broadus	Rev. V. B. Filson
1 Louisville, Deer Park	Mrs. Homer Puckett	Rev. S. S. Hill
1 Louisville, Hazelwood	Mrs. J. L. Ruph	Rev. I. E. Rouse
1 Louisville, Victory Memorial	Mrs. C. M. Forbes	Rev. J. B. Head
1 Trenton	Mrs. Steve Williams	Rev. John Culver
1 Union	Mrs. M. D. Martin	Rev. L. E. Cutry
4 Whitesville, First	Mrs. Aartin Ramsey	Rev. W. G. Potts
Louisiana		
2 Arcadia, First	Mrs. Leo Daniel	Rev. C. W. Caldwell
1 Coushatta, First	Mrs. W. D. McConathy	Rev. J. D. Cheatham
2 Delhi, First	Mrs. J. B. Smith	Rev. C. F. Almand
3 Ferriday, First	Mrs. P. O. Sawyer	Rev. J. H. Hamilton
1 Homer, First	Mrs. Jack Oakes	Rev. V. L. McKee
1 Jennings, First	Mrs. L. E. Shirley	Rev. E. N. Weaver
1 Lake Arthur, First	Mrs. C. E. Reddell	Rev. R. G. Merritt
5 Lake Charles, Trinity	Mrs. W. A. Perkins	Rev. T. V. Herndon
6 Minden, First	Mrs. J. H. Johnson	Rev. H. E. Kirkpatrick
7 New Orleans, Central	Mrs. D. G. Lissard	Rev. Horatio Mitchell
1 New Orleans, First	Mrs. J. Louis Ford	Rev. J. D. Gray
5 New Orleans, Valence Street	Mrs. G. P. Boudreaux	Rev. S. A. Murphy
1 Ringgold, First	Mrs. L. M. Horkhalter	Rev. R. W. Singleton
1 Rocky Springs	Mrs. M. J. Haynes	Rev. T. E. Edmonson
5 Shreveport, Parkview	Mrs. F. M. Kilmer	Rev. A. T. Pilgren
2 Sterlington, First	Mrs. L. R. Stall	Rev. G. E. Guinn
2 Welch, First	Mrs. W. A. Love	Rev. St. Clair Bower
Maryland		
1 Cumberland, Grace	Mrs. Francis Nutter	Rev. W. R. Keefe, Jr.
1 Frederick, First	Mrs. G. William Trout	Rev. W. C. Royal
1 Hagerstown, First	Mrs. A. H. Sherman	Rev. P. B. Watlington
1 Nanjemoy*	Mrs. Florence Davis	Rev. L. P. Barnette
1 Princess Anne	Mrs. Irvin W. Custis	Rev. Roland A. Chaffey
Mississippi		
7 Brookhaven, First	Mrs. C. E. Byrne	Rev. B. Locke Davis
1 Clarksdale	Mrs. Margaret O'Bannon	Rev. N. D. Timmerman
1 Corinth, First	Mrs. Jamerson C. Jones	Rev. T. W. Young
1 Gloster	Mrs. Bryan Whittington	Rev. E. K. Cox
2 Indianola, First*	Mrs. James Kimbrough	Rev. N. G. Hickman
1 Jackson, Calvary	Mrs. A. K. Godbold	Rev. H. M. King
1 Jackson, First	Mrs. W. H. Earbee	Rev. W. A. Hewitt
4 Laurel, First	Mrs. Lavon Boyles	Rev. L. G. Gates

Church	W.M.S. President	Pastor
2 Louisville		
2 Meridian, First	Mrs. J. K. Armstrong	Rev. J. N. McMillin
1 Morgan City	Mrs. John Dear	Rev. H. C. Bass
4 Sunflower	Mrs. W. B. Moore	Rev. C. J. Olander
3 Tupelo, Calvary	Mrs. C. E. Powell	Rev. B. H. Hardin
2 Tupelo, First	Mrs. Davis Langston	Rev. S. B. Cooper
	Mrs. C. P. Long	Rev. H. R. Holcomb
Missouri		
4 Cabool*	Mrs. Earl Potts	Rev. E. F. Maness
1 Flat River	Mrs. Charles Rowe	Rev. E. C. Abernathy
4 Houston	Mrs. Floyd H. Ice	Rev. J. R. Halbrook
1 Kirksville	Mrs. Howard M. Vickroy	Rev. Ralph M. G. Smith
1 Plattsburg	Mrs. Clyde Miller	Rev. Hale M. Dixon
6 Springfield, Immanuel*	Mrs. Susie E. Bray	Rev. J. W. Geren
North Carolina		
2 Asheville, First*	Mrs. J. R. Hall	Rev. L. R. O'Brian
2 Asheville, Merrimon Avenue	Mrs. D. L. Holland	Rev. G. C. Cox
5 Burlington, First	Mrs. J. R. Poindester	Rev. A. D. Kinnet
2 Cashie	Mrs. A. E. Bowen	Rev. J. R. Link
1 Clayton	Mrs. B. A. Hocutt	Rev. R. R. McCullough
3 Colerain	Mrs. Francis Miller	Rev. L. M. Dixon
3 Conway	Mrs. J. C. Parke	Rev. J. H. Bunn
6 Creeksville	Miss Lois Boone	Rev. J. M. Duncan
3 Durham, First	Mrs. Norman O. Reeves	Rev. Ita D. S. Knight
4 Durham, Grace	Mrs. N. E. Wiggins	Rev. H. B. Anderson
4 Durham, Temple	Mrs. John T. Craig	Rev. John T. Wayland
5 Durham, Watts Street*	Mrs. J. Floyd Goodrich	Rev. J. T. Riddick
5 Harris Chapel	Mrs. A. M. Shearin	Rev. J. F. Roach
1 Henderson, First	Mrs. G. W. Knott	Rev. A. S. Hale
2 Hendersonville	Mrs. Mary C. Brinson	Rev. B. E. Wall
2 Madison	Mrs. S. R. Robertson	Rev. R. A. Gardner
3 Millbrook	Mrs. J. S. Farmer	Rev. J. A. Easley
2 New Bridge	Mrs. Harry Lominac	Rev. J. D. Quinton
5 New Friendship*	Mrs. S. O. Hinkle	Rev. Luther J. Matthews
1 Oxford	Mrs. J. M. Blalock	Rev. M. L. Banister
1 Pisgah*	Mrs. C. W. Teague	Rev. C. W. Teague
1 Rocky Mount, First	Mrs. W. D. Joyner	Rev. J. W. Kincheloe
1 Salisbury, First	Mrs. J. R. Lowery	Rev. A. G. Cree
1 Sawyer's Creek	Mrs. H. L. Swain	Rev. H. L. Swain
6 Shiloh (Chowan Assn.)	Mrs. P. P. Gregory	Rev. J. L. Pearce
3 Siler City	Mrs. C. N. Bray	Rev. J. L. Price
1 Stoney Creek*	Mrs. John F. Griffin	Rev. I. B. Jackson
2 Thomasville, First	Mrs. R. G. Jennings	Rev. W. K. McGee
3 Winston-Salem, North	Mrs. S. L. Naff	Rev. S. L. Naff
3 Winston-Salem, Southside	Mrs. W. N. Dalton	Rev. N. C. Teague
6 Winston-Salem, Waughtown	Mrs. Tress Hauser	Rev. J. F. Carter
Oklahoma		
1 Idabel, First	Mrs. Delbert Randolph	Rev. Rowe C. Holcomb
13 Lawton, First	Mrs. L. B. Leard	Rev. Oren C. Reid
3 Nicoma Park	Mrs. R. A. Dykstra	Rev. K. L. Chapman
1 Oklahoma City, Kelbam Ave.*	Mrs. John Potter	Rev. R. C. Howard
1 Oklahoma City, Wilmont Place	Mrs. B. W. Blessing	Rev. J. R. Eldridge
South Carolina		
1 Allendale	Mrs. J. L. Oswald	Rev. R. H. McKinnon
1 Bellview	Mrs. L. L. Satterfield	Rev. Jennings Johnson
3 Black Creek (Welsh Neck Assn.)	Mrs. Ralph Gandy	Rev. P. H. Hughes
1 Brushy Creek	Mrs. M. E. Hudson	Rev. W. C. Richey
1 Bush River	Mrs. John Earl Smith	Rev. C. C. Vaughn
1 Cayce	Mrs. J. H. Reed	Rev. J. H. Reed
8 Cheraw	Mrs. J. P. Harrison	Rev. Charles H. Myers

Church

- 2 Chester, First
- 2 Clinton, First
- 1 Columbia, Park Street
- 2 Columbia, Shandon
- 1 Crescent Hill
- 4 Darlington, First
- 2 Doctor's Creek
- 1 Duncan
- 3 Eureka
- 1 Fairforest
- 8 Gaffney, First*
- 11 Goucher*
- 10 Grassy Pond
- 5 Greenville, Emmanuel
- 1 Greenville, First
- 3 Hampton
- 7 Honca Path
- 2 Joman Mill
- 1 Johnston
- 1 Lamar
- 1 Laurens, First
- 1 Long Branch (Saluda Assn.)*
- 1 Manning
- 14 Mt. Elon
- 1 Mullins
- 1 New Piggah
(No. Spartanburg Assn.)
- 7 Olanda
- 6 Pacolet Mills
- 1 Princeton
- 10 Rock Hill, First
- 5 Sardis (Florence Assn.)
- 1 Shady Grove*
- 1 Simpsonville, First
- 1 Spartanburg, Calvary
- 1 Spartanburg, Southside
- 2 Swift Creek
- 1 Timmonsville
- 6 Walterboro, First
- 5 Westminster
- 5 Westminster, First

W.M.S. President

- Mrs. J. W. Crowder
Mrs. S. W. Summerall
Mrs. C. W. Clayton
Mrs. P. M. Therrell
Mrs. E. G. Bumgardner
Mrs. W. B. Huntley
Mrs. H. V. Saunders
Mrs. D. R. Hill
Miss Cars Shirley
Mrs. Annie M. Bomar
Mrs. Vernon Phillips
Miss Addie Brown
Mrs. Blucher McCraw
Mrs. L. N. Chandler
Mrs. F. L. Whitlock
Mrs. E. M. Peoples
Miss Marie Gaines
Mrs. M. B. Wright
Mrs. S. O. McHam
Mrs. Avory Bland
Mrs. P. G. Mims
Mrs. J. W. Henderson
Mrs. G. M. Reed
Mrs. J. K. Breedin
Mrs. E. H. Hearon
Mrs. J. H. Dixon
Mrs. Posey Belcher

- Mrs. Virginia Tomlinson
Mrs. T. J. Trowell
Mrs. G. E. Taylor
Mrs. J. D. Coker
Mrs. Dewey Yarbrough
Mrs. M. G. Mattison
Mrs. L. K. Simpson
Mrs. Harry P. Williams
Mrs. Marvin Giler
Mrs. H. L. Lee
Mrs. H. C. Anderson
Mrs. H. J. Givens
Mrs. E. G. Poore
Mrs. W. L. O'Kelley

Tennessee

- 9 Alamo
- 1 Bolivar
- 1 Carthage
- 1 Chattanooga, Brainerd
- 1 Chattanooga, Calvary
- 1 Chattanooga, Central
- 5 Chattanooga, Chamberlain Ave.
- 2 Chattanooga, East
- 12 Chattanooga, Northside
- 2 Chattanooga, Ridgedale
- 14 Chattanooga, Tabernacle
- 1 Cleveland, First
- 2 Clinton
- 1 Clinton, South
- 6 Covington
- 1 Dumblin*
- 1 Erwin, First
- 1 Grand Junction
- 1 Hickman
- 1 Jacksboro

- Mrs. J. T. Green
Mrs. Paul Wieland
Mrs. Tom Massey
Mrs. J. R. Minter
Mrs. E. Holland
Mrs. J. E. Bridges
Mrs. G. M. Turner
Mrs. W. H. Nelson
Mrs. J. Wade Smith
Mrs. C. B. Cobleigh
Mrs. E. C. Gardner
Miss Annie Bowen
Mrs. H. E. Burckas
Mrs. Ben Peters
Mrs. Hays Owen
Mrs. George Moore
Mrs. W. W. Atchley
Mrs. T. E. Tipter
Mrs. Ona Thomas
Mrs. J. G. Woodward

Pastor

- Rev. J. E. Rawlinson
Rev. W. N. Long
Rev. Paul Wheeler
Rev. F. C. Helms
Rev. H. E. Alban
Rev. W. L. Davis
Rev. J. H. Strong
Rev. L. J. Keels
Rev. George L. Robertson
Rev. H. K. Ezell
Rev. D. A. Howard
Rev. E. E. Hite
Rev. J. J. Boone
Rev. D. A. Martin
Rev. Leon M. Latimer
Rev. O. S. Ulmer
Rev. C. O. Lamortux
Rev. G. C. Seidenspinner
Rev. Paul Hartzell
Rev. Winfrey Davis
Rev. W. D. Spinx
Rev. L. H. Raines
Rev. V. V. Raines
Rev. A. C. Magee
Rev. E. W. Holmes
Rev. Edgar Johnson

- Rev. B. K. Truluck
Rev. W. T. Tate
Rev. J. N. Long
Rev. R. A. McFarland
Rev. B. K. Truluck
Rev. David M. Ramsey
Rev. L. K. Simpson
Rev. C. E. Vermillion
Rev. O. K. Webb
Rev. M. J. Kyzer
Rev. B. H. Price
Rev. Charles M. Griffin
Rev. D. D. Lewis
Rev. M. J. Stansell

- Rev. L. G. Frey
Rev. Paul Wieland
Rev. V. Floyd Stark
Rev. B. F. Collins
Rev. W. T. McMahan
Rev. Ralph Moore
Rev. A. A. McClanahan, Jr.
Rev. J. N. Bull
Rev. R. W. Selman
Rev. David Livingston
Rev. R. R. Denny
Rev. John L. Dodge
Rev. H. L. Smith
Rev. Kenneth Spickard
Rev. P. L. Ramsey
Rev. Roy Hinchey
Rev. D. H. Willet
Rev. A. M. Senter
Rev. J. M. Strother
Rev. Edward Haug

Church

- 1 Jackson, Poplar Heights*
- 1 Jackson, Westover*
- 1 Knoxville, Calvary*
- 1 Lewisburg
- 1 Memphis, Ardmore*
- 5 Memphis, Bellevue
- 1 Memphis, Central Ave.*
- 5 Memphis, Prescott
- 1 Mercer
- 1 Milan*
- 5 Morristown, First*
- 1 Mt. Juliet*
- 3 Nashville, Eastland
- 1 Nashville, Lockland
- 1 Nashville, Park Avenue
- 2 North Jackson*
- 4 Old Hickory
- 1 Powell*
- 6 Trenton
- 1 Trezevant*
- 1 Warrensburg
- 3 White House
- 3 Whiteville*

W.M.S. President

- Mrs. U. G. Hammons
Mrs. Edd Fullerton
Mrs. J. E. Higgins
Mrs. Edgar Lambert
Mrs. L. K. Storey
Mrs. D. C. Shepherd
Mrs. L. C. McGonagill
Mrs. J. Carl McCoy
Mrs. J. G. Dickinson
Mrs. C. B. Harrison
Mrs. R. N. Harwood
Mrs. Edgar Curd
Mrs. R. J. Edwards
Mrs. R. T. Hargrove
Mrs. J. H. Swafford
Mrs. Wade Carver
Mrs. Clyde Bomar
Mrs. A. G. Haworth
Mrs. C. L. Faileas
Mrs. C. E. Tate
Mrs. Bewley Reed
Mrs. W. R. Russell
Mrs. Alice Taylor

Pastor

- Rev. L. G. Frey
Rev. L. G. Frey
Rev. H. K. Williams
Rev. Lloyd T. Householder
Rev. J. R. Burk
Rev. R. G. Lee
Rev. E. A. Autrey
Rev. J. Carl McCoy
Rev. L. B. Matthews
Rev. Henry Huey
Rev. O. D. Fleming
Rev. John D. Barbee
Rev. E. B. Crain
Rev. William McMurphy
Rev. W. C. Creasman
Rev. Ralph Kerley
Rev. Ray Dean
Rev. Judson Taylor
Rev. C. O. Simpson
Rev. E. M. Skinner
Rev. J. T. Carter
Rev. A. D. Nichols
Rev. A. H. Hicks

Texas

- 1 Brownfield, First
- 2 Center, First
- 1 Corpus Christi, Park Avenue
- 8 Houston, Baptist Temple
- 4 Houston, Cross Timbers*
- 2 Houston, Trinity
- 1 Levelland, First
- 2 Luling, First
- 2 Pine Hill, First*
- 2 San Antonio, First
- 5 Wichita Falls, Highland Heights

- Mrs. Lawrence Green
Mrs. W. H. Conway
Mrs. Walter Felton
Mrs. Paul Bybee
Mrs. J. H. Adair
Mrs. H. J. Ledbetter
Mrs. E. R. Nickerson
Mrs. J. W. Allen
Mrs. W. C. Brown
Mrs. David V. Hays
Mrs. Martin Smith

Virginia

- 2 Aaron's Creek*
- 2 Alexandria, Del Ray*
- 1 Altavista, Central*
- 1 Altavista, First*
- 6 Amelia
- 1 Bacon's Castle*
- 10 Bassett
- 1 Berea
- 1 Bethany
- 1 Big Island
- 2 Big Stone Gap
- 1 Black Creek (Blackwater Assn.)
- 9 Black Creek (Dover Assn.)
- 1 Bluefield, W. Va., Calvary*
- 1 Bluefield, W. Va., College Ave.
- 1 Bluefield, W. Va., First
- 2 Boykins
- 1 Branch's
- 1 Bristol, First
- 1 Brookneal
- 1 Burdette*
- 2 Bybee's Road
- 2 Cape Charles
- 2 Central (Middle District)
- 1 Central Hill

- Mrs. Frank Perkins
Miss Ella Lee Sowers
Mrs. F. W. Wright
Mrs. O. M. Brendle
Mrs. H. E. Jackson
Mrs. J. B. Thompson
Mrs. W. M. Bassett
Mrs. J. C. Waters
Mrs. R. E. Booker
Mrs. S. G. St. John
Mrs. E. J. Prescott
Mrs. J. L. Doughtie
Mrs. E. J. Barker
Miss Beatrice Repas
Mrs. G. W. Lavender
Mrs. F. F. Shouldis
Mrs. R. F. Marks
Mrs. W. B. Ingram
Mrs. Arthur Byrd
Miss May Williams
Mrs. J. T. Pond, Jr.
Mrs. Effie Wilson
Mrs. Willard Chandler
Mrs. B. O. Moseley
Mrs. Archer Atkins

- Rev. E. R. Harris
Rev. John S. Sowers
Rev. R. L. Camden
Rev. J. S. Garrenton
Rev. R. D. White
Rev. Lawton Riley
Rev. W. J. Yeaman
Rev. Charles A. Morgan
Rev. E. B. Caboon
Rev. E. S. Vaughn
Rev. H. H. Hemling
Rev. W. B. Watson
Rev. N. J. Hoover
Rev. J. W. Farmer
Rev. Howard L. Weeks
Rev. T. E. Peters
Rev. F. B. Handley
Rev. H. L. Arthur
Rev. J. E. Hicks
Rev. R. S. Hooker
Rev. J. T. G. Moore
Rev. W. P. Brooke
Rev. J. E. Foster
Rev. O. W. Patterson
Rev. George Kissinger

Church

- 1 Chester
- 4 Clarksville
- 8 Coeburn*
- 3 Colonial Beach
- 1 Columbia
- 1 Cobl Spring*
- 1 Courtland
- 1 Crystal Hill
- 3 Danville, Lee Street
- 2 Danville, Moffett Memorial
- 1 Danville, Second
- 1 Dendron
- 2 Dillwyn*
- 3 Ephesus (Rappahannock Assn.)*
- 2 Exmore
- 1 Farnham
- 3 Fieldale*
- 1 Fluvanna
- 4 Fork Union
- 1 Glebe Landing
- 1 Glen Allen
- 1 Glenn Memorial
- 1 Hallwood
- 1 Hampton
- 1 Hampton, Memorial*
- 1 Harrisonburg
- 2 Hatcher Memorial
- 2 Hilton*
- 1 Ivor*
- 1 Kilmarnock
- 12 Laurel Hill
- 1 Liberty (E.C.)
- 1 Manley Memorial
- 1 Marion
- 1 Marshall
- 8 Martinsville, First
- 1 Martinsville, Starling Avenue
- 1 Mattaponi
- 1 Millfield*
- 2 Mountain View*
- 4 Mt. Carmel
- 1 Mt. Hermon*
- 4 Mt. Lebanon
- 1 Mt. Pleasant
- 1 New Chapel*
- 1 New Hope
- 2 Newport News, Ivy Memorial
- 1 Newsoms
- 1 Norfolk, Campostella Heights
- 1 Norfolk, Ocean View
- 1 North Run
- 1 Norton
- 1 Olivet
- 1 Parkley
- 1 Petersburg, Second
- 1 Pocahontas*
- 1 Portsmouth, Court Street
- 3 Portsmouth, Jackson Memorial*
- 5 Portsmouth, Park View*
- 2 Portsmouth, Port Norfolk*
- 2 Providence
- 3 Rappahannock*
- 1 Richmond, Fairmount
- 2 Richmond, First

W.M.S. President

- Mrs. William C. Shawen
Mrs. James Riggins
Mrs. W. A. Hawley
Mrs. J. G. Hefflin
Mrs. G. E. Barham
Mrs. Mercer O. Clark
Mrs. C. W. Richardson
Mrs. C. D. Moore
Mrs. William E. Clark
Mrs. George Wilkinson
Mrs. W. H. Hall
Mrs. Edward Rogers
Mrs. Ada Hanes
Mrs. W. G. Rennolds
Mrs. W. F. Mister
Mrs. S. Y. Craig
Miss Ann Merriman
Mrs. M. L. Wood
Mrs. J. W. Cammack
Mrs. E. J. Dankl
Mrs. George Trevvett
Mrs. Judson Covington
Mrs. Gordon Hall
Mrs. Annie Congdon
Mrs. Paul Moore
Mrs. James Gochenour
Mrs. W. B. Shuman
Mrs. W. J. Turlington
Mrs. A. R. Gardner
Mrs. R. G. Dew
Mrs. W. B. Carter
Mrs. Francis Lewelling
Mrs. J. O. Smith
Mrs. M. M. Miles
Mrs. John E. Ramey
Mrs. J. F. Hollifield
Mrs. W. O. Minter
Mrs. L. R. Bagby
Mrs. E. V. Stephenson
Mrs. J. B. Clark
Mrs. H. I. Smith
Mrs. Clyde Good
Mrs. C. B. Johnson
Mrs. J. F. Garmand
Mrs. E. P. Tweedy
Mrs. R. A. Hairfield
Mrs. W. F. Robins
Mrs. John B. Darden
Mrs. C. R. Lester
Mrs. B. E. Fletcher
Mrs. W. E. Cross
Mrs. J. J. Stump
Mrs. Irving Walton
Mrs. Edward Gray
Mrs. W. W. Douthat
Mrs. R. H. Bowden
Mrs. Archer B. Bass
Mrs. D. S. Dempsey
Mrs. W. T. Dowd
Mrs. L. M. Bailey
Mrs. G. A. Williams
Mrs. H. A. Balderson
Mrs. C. B. Mitchell
Mrs. T. Justin Moore

Pastor

- Rev. William C. Shawen
Rev. W. J. Crain
Rev. W. A. Hawley
Rev. E. W. Storke
Rev. U. S. Knox
Rev. Mercer O. Clark
Rev. Floyd P. Davis
Rev. F. G. Cabanis
Rev. G. M. Turner
Rev. R. W. Wallis
Rev. A. G. Carter
Rev. A. W. H. Jones
Rev. Julius S. Rushing
Rev. John P. Batkin
Rev. A. C. Walker
Rev. S. Y. Craig
Rev. J. Landon Maddox
Rev. Oscar E. Northern
Rev. J. W. Cammack
Rev. L. W. Kersey
Rev. W. Roy Carter
Rev. C. E. Burrell
Rev. E. C. Wilmer
Rev. John H. Garber
Rev. H. L. Bryant
Rev. E. B. Jackson
Rev. G. F. B. Mullin
Rev. David F. White
Rev. George Kissinger
Rev. C. R. Stevens
Rev. W. B. Carter
Rev. J. R. Robinson
Rev. J. H. Coshy
Rev. W. H. Carter
Rev. H. A. Sodergreen
Rev. J. P. McCabe
Rev. T. W. Fryer
Rev. Millard Thrift
Rev. George Kissinger
Rev. J. B. Thomas
Rev. J. M. Taylor
Rev. R. H. Wainwright
Rev. Charles Clement
Rev. P. A. Anthony
Rev. G. C. Venable
Rev. E. A. Estall
Rev. L. L. Jessup
Rev. C. P. Cleveland
Rev. R. M. Pleasant
Rev. J. S. Johnson
Rev. L. H. Waters
Rev. George E. Simmons
Rev. J. E. Bowman
Rev. John H. Allen
Rev. Clyde N. Parker
Rev. R. H. Bowden
Rev. Archer B. Bass
Rev. D. S. Dempsey
Rev. W. H. Baylor
Rev. Weston Bruner
Rev. E. B. White
Rev. N. F. Jacobs
Rev. Archer W. Rich
Rev. Theodore F. Adams

Church

- 1 Richmond, Grove Avenue
- 1 Richmond, Northside
- 1 Ringgold
- 1 Riverview
- 1 Roanoke, Calvary
- 1 Roanoke, First
- 3 Rockersville*
- 2 St. Stephens
- 1 Salem (Goshen Assn.)
- 1 Saltville
- 1 Scottsville
- 2 Sharon
- 2 Smithfield*
- 2 South Boston
- 2 South Hill
- 10 Spring Hill (Shiloh Assn.)
- 1 Suffolk, West End
- 1 Tazewell
- 8 Thaxton*
- 1 Thompson's Settlement
- 1 Victoria
- 2 Warrenton
- 4 Wkomico
- 1 Winn's Creek
- 2 Young's Chapel
- 1 Zoar

W.M.S. President

- Mrs. J. Aubrey Saunders
Mrs. Lillian W. Wells
Mrs. M. W. Adams
Mrs. R. M. Harris
Mrs. C. H. Faris
Mrs. Eugene Harris
Mrs. Mary E. Mundy
Mrs. Willie Watkins
Mrs. T. L. Kube
Mrs. J. B. Sanders
Mrs. Geo. T. Omohundro, Jr.
Mrs. James Mitchell
Mrs. W. H. Sykes
Mrs. T. M. Spencer
Mrs. R. W. Grant
Mrs. A. N. Fray
Mrs. F. A. Boze
Mrs. Aaron Russ
Mrs. R. E. McGhee
Mrs. Elmer Hopkins
Mrs. H. D. Luey
Mrs. Thomas C. Allen
Mrs. Perry A. Dameron
Mrs. T. E. Bradley
Mrs. J. F. Fletcher
Mrs. Lavanda Stiff

Pastor

- Rev. Carlton S. Prickett
Rev. J. C. Wicker
Rev. J. F. Colston
Rev. Leroy Blackburn
Rev. R. S. Owens
Rev. Walter P. Binns
Rev. W. T. Hall
Rev. J. E. Shockley
Rev. B. Venable
Rev. M. E. Hall
Rev. Oscar E. Northern
Rev. E. M. Richardson, Jr.
Rev. L. F. Paulette
Rev. F. C. Riley
Rev. R. W. Grant
Rev. W. T. Hall
Rev. R. P. Downey
Rev. W. S. Jones
Rev. C. M. Roberson
Rev. Arch Buchanan
Rev. S. G. Harwood
Rev. T. C. Allen
Rev. C. R. Stevens
Rev. C. L. Eubank
Rev. J. F. Fletcher
Rev. R. E. Dunkum



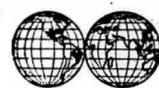
BOOK REVIEWS



Miss Willie Jean Stewart, Tennessee

Any books reviewed in this magazine may be ordered from State Baptist Bookstore. The price of each book is quoted with its review.

DAY DAWN in YORUBA LAND: Charles E. Maddy; Broadman Press, Nashville, 1939; Pages 225; Price 50c in Paper, 75c in Cloth



For eighty-nine years southern Baptists have worked among the Yoruba people of Nigeria British West Africa. Quite literally their mission in this tropical land has been established at the cost of blood and heartache and tears. Undoubtedly it has been ordained of God, else it must often have perished from the earth as time after time its forces were depleted and its most promising endeavors abandoned or torn up by the roots. Yet in spite of the fact that at one time it was left for seven years without a single American missionary on the field and in spite of the oft-recurring cycle of appointment, enthusiastic beginning, sickness and death or resignation, the work has survived and the mission has made progress and become

in many ways the most promising field of southern Baptists today.

The story is a moving, challenging one. To its telling the author brings the gifts of imagination, sympathy and enthusiasm. The result could hardly help being a vivid, interesting, readable book which is sure to increase the faith and stir the missionary zeal of its readers.

The book is well adapted for use in mission study classes also. Its nine chapters "pair off" nicely for use in a five period school, yet are full enough to warrant an entire period for each in circles or other classes that can give this much time to their study. In the appendix some very interesting and helpful suggestions for teaching it are given and some easily accessible sources of additional material are listed. (See also page 20 of this magazine.) —13—



FAMILY ALTAR



Mrs. W. H. Gray, Alabama

Note: The references in italics are furnished by the "Committee on Improved Uniform Lessons of the International Sunday School Lessons". The references in heavy type are in keeping with the month's missionary topic and with the denomination's emphasis on soul-winning in 1939.

TOPIC: Carrying Out the Great Commission in the Homeland—Acts 1:8

"Lord, let Thy goodness lead our land,
Still saved by Thine almighty hand,
The tribute of its love to bring
To Thee, our Savior and our King.

"Let every public temple raise
Triumphant songs of holy praise;
Let every peaceful, private home
A temple, Lord, to Thee become".

"And came into His own country"

The Holy Spirit Given

1st Day—Mark 1:1-11; Eccl. 1:12-18

2nd Day—Mark 1:12-22; James 3:13-18

3rd Day—Mark 1:23-34; 1 Kings 11:9-13

4th Day—Mark 1:35-45; 1 Kings 11:26-31

5th Day—Mark 2:1-12, 15-20;

1 Kings 11:37-40

6th Day—Mark 3:1-12; Matt. 25:34-39

7th Day—Mark 3:13-26; Luke 14:16-21

Power Promised

8th Day—Isa. 40:28-31; Luke 19:1-10

9th Day—Luke 4:14-20; Eph. 5:15-21

10th Day—Luke 4:21-32; 1 Kings 12:1-5

11th Day—Acts 2:1-13; 1 Kings 12:6-11

12th Day—Acts 2:14-23; 1 Kings 12:12-15

13th Day—Acts 2:24-36; 1 Kings 12:16-20

14th Day—Acts 2:37-47; Ruth 1:15-18

"Pray Ye"

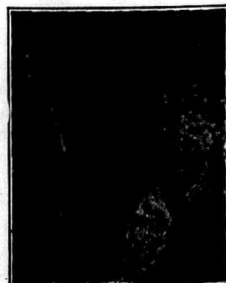
"Praise God from whom all blessings flow".

Ask God's guidance for: (1) Baptist World Alliance at Atlanta, Ga., July 22-28; (2) Foreign, Home and State Mission Boards; (3) W.M.U. work in each state; (4) all state, district and associational assemblies and camps; (5) college students on vacation; (6) Foreign Mission Week at Ridgecrest, N. C., July 30-Aug. 4; (7) Home Mission Conference at Ridgecrest, N. C., Aug. 6-11.

Intercede for Southwide Baptist Revival.

Intercede for missionaries at home and abroad; (1) for their families; (2) their field; (3) lack of equipment; (4) other hindrances.

Pray that during this summer W.M.U. may secure many debt-paying memberships according to southwide and state plans.



-16-

Calendar of Prayer

July, 1939

Prepared by Mrs. W. C. Henderson, Arizona

We are all blind until we see that in the human plan
Nothing is worth the making, if it does not make the man.
Why build these cities glorious, if man unbuilded goes?
In vain we build the work, unless the worker grows.

—Edwin Markham

Topic: Carrying Out the Great Commission in the Homeland—Acts 1:8

1—SATURDAY

Mrs. L. W. Pierce (Nellie Minor), Mrs. Peyton Stephens, earnest missionaries from China

He hath made His wonderful works to be remembered.—Psa. 111:4

2—SUNDAY

A great increase in conversions and baptisms in every community
Remember that thou magnify His work, which men behold.—Job 36:24

3—MONDAY

Miss Hazel Robb, Good Will Center worker, Baltimore, Md.

Be strong, all ye people of the land, saith the Lord, and work: for I am with thee.—Hag. 2:4

4—TUESDAY

Rev. and Mrs. Fink Hugo Austin, evangelistic-educational workers to their own Negro race, Lynchburg, Va.
The Lord stood with me and strengthened me.—II Tim. 4:17

5—WEDNESDAY

Miss Kathryn Sewell, Bejuca, Miss Christine Garrett, Comalaca del Sur, Cuba, evangelistic workers
Show us Thy mercy, Lord, and grant us Thy salvation.—Psa. 85:7

6—THURSDAY

Mr. and Mrs. Turnbull (Frances Morrow), Natal, Mr. and Mrs. Lingerfelt (Nelle Self), Jaguapara, Brazil, evangelistic-educational workers

He is the living God and steadfast forever.—Dan. 4:34

7—FRIDAY

Mr. Budaia, Mr. Cebro, Mrs. Villarreal, educational workers, Bastrop, Tex.; also George Budaia, Margaret Fund student
Be gentle unto all men, apt to teach.
II Tim. 2:24

8—SATURDAY

Mr. and Mrs. King (Florence Buck), evangelistic workers with Indians, Dania, Fla.
Thou shalt call and the Lord shall answer.—Isa. 58:9

9—SUNDAY

Faithful preaching of the Gospel in all S.B.C. churches
The Gospel of Christ: . . . It is the power of God unto salvation.—Rom. 1:16

10—MONDAY

W.M.U. work in Europe
The Lord will maintain the cause of the afflicted and the right of the poor.—Psa. 140:12

11—TUESDAY

Mr. and Mrs. Lowe (Jesse Martin), evangelistic-educational workers, Milmes (Mary Alexander, Helen McCullough, educational workers, Shanghai, China
Our help is in the Name of the Lord, who made Heaven and earth.—Psa. 124:8

12—WEDNESDAY

Mr. and Mrs. Stover (Irene Butler), publication workers, "Mr. and Mrs. Enate (Crystal Armstrong), educational workers, Rio de Janeiro, Brazil
How precious, also, are Thy thoughts unto me, O God!—Psa. 139:17

13—THURSDAY

Mr. and Mrs. Owens (Dorcas Sanford), evangelistic-educational workers, Haifa, Palestine
And who is he that will harm thee, if ye be followers of that which is good? I Pet. 5:13

14—FRIDAY

Mr. and Mrs. Harrington (Edna Earle Leeper), educational workers, Mrs. D. F. Appleby (Rosalee Mills), evangelistic-literary worker, Bello Horizonte, Brazil
Let the God of my salvation be exalted.—Psa. 118:46

15—SATURDAY

Mr. and Mrs. Delgado (Guadalupe Garcia), Corpus Christi, Mr. and Mrs. Flores, San Marcos, Texas, evangelistic workers with Mexicans

The just shall live by faith.—Rom. 1:17

16—SUNDAY

Mr. and Mrs. Maer (Bertha Tamm), Miss Marjorie Spence, educational workers, Temaca, China
The Lord delivereth and succoureth.—Dan. 4:27

-17-

Calendar of Prayer for July

17—MONDAY

Mr. and Mrs. Sanchez (Andrea Rendon), evangelistic workers with Spanish Americans, Roswell, N. M.
Pray now, unto the Lord our God for us.
Jer. 37:3

18—TUESDAY

Mr. and Mrs. Bequer, evangelistic workers, Cienfuegos, Cuba; also Angel Bequer, Margaret Fugd student
We are ambassadors for Christ.
—II Cor. 5:20

19—WEDNESDAY

Mr. and Mrs. Freeman (Clara Hugler), evangelistic workers, La Rioja. Miss Martha Ellis, educational worker, Buenos Aires, Argentina
The Name of the Lord Jesus was magnified.
Acts 19:17

20—THURSDAY

Mr. and Mrs. Patterson (Sara Lee Babal), evangelistic workers, Miss Esther Olsen educational worker, Abeokuta, Nigeria
Now therefore, our God we thank Thee, and praise Thy glorious Name.
—I Chron. 29:13

21—FRIDAY

Rev and Mrs. Oscar Hill, evangelistic workers with Spanish-Americans, Alamogordo, N. M.
Let my prayer be set before Thee as incense.—Psa. 141:2

22—SATURDAY

Baptist World Alliance, Atlanta, Ga., July 22-28
Speak of the glorious majesty of Thine honor and of Thy wondrous works.
Psa. 145:3

23—SUNDAY

Enlistment of a multitude of soul winners who will present the Gospel message to millions of lost persons
Go ye therefore and make disciples.
—Matt. 28:19

24—MONDAY

Mr. and Mrs. Maddox (Effie Roe), evangelistic-educational workers, Mr. and Mrs. Allen (Maggie Hammond), evangelistic workers, Bello Horizonte, Brazil; also John Ray and Daniel Maddox, Margaret Fund students
No good thing will He withhold from them that walk uprightly.—Psa. 84:11

25—TUESDAY

Mr. and Mrs. Velez (Maria J. Montemayor), educational workers, Anglo-American Institute, El Paso, Tex.; also Evangelina Velez, Margaret Fund student
The works of the Lord are great.
—Psa. 111:2

26—WEDNESDAY

Mr. and Mrs. Ray (Janet Gilman), Miss Mollie McMinn, evangelistic workers, Wuchow, China
The Lord preserveth all them that love Him.—Psa. 145:20

27—THURSDAY

Mr. and Mrs. Moore (Alice Speiden), evangelistic workers, Rome, Italy
The Lord liveth, and blessed be my Rock.
—Psa. 145:40

28—FRIDAY

Misses Margaret Shumate and Aurora Pender, evangelistic workers, Shiu Hing, China
Blessed are they which are persecuted for righteousness' sake.—Matt. 5:10

29—SATURDAY

Miss Alma Graves, educational worker, Kokura, Miss Naomi Schell, Good Will Center worker, Tobata, Japan
Let such as love Thy salvation say continually—the Lord be magnified.
—Psa. 40:10

30—SUNDAY

Enlistment in Kingdom work of those who in southwide revivals
Teaching them to observe all things, whatsoever I have commanded you.
—Matt. 23:20

31—MONDAY

Dr. and Mrs. E. A. Nelson (Ida Lundberg), emeritus missionaries from Brazil
The righteous shall give thanks unto Thy Name.—Psa. 140:13

¹Attended W.M.U. Training School

²Attended Southwestern Training School

³Attended Baptist Bible Institute

⁴At Present on Furlough



BIBLE STUDY



Elia Broadus Robertson, Kentucky

OUR GREATEST NATIONAL NEED

Prov. 14:30, 31, 34; Psa. 33:6, 12-15

DR. BROADUS was once asked: "Don't you wish this were a Christian nation?" "No," he surprisingly replied; "but I wish it were a nation of Christians!" A state church is never desirable; it is apt to grow oppressive and unChristian. But a nation full of Christian citizens would be the Kingdom of Heaven.

Our three verses from Proverbs show man as an individual, as a neighbor, as a citizen. They contrast good and evil in personal life, in community life, in national life. The tranquil heart (v. 30) is a gift of God; it is contrasted with envy, which is but another name for covetousness. Did you ever notice that breaking the 10th commandment leads to breaking those that precede—to lies, theft, adultery, murder? Because it seizes us off guard. Jesus said: "Take heed and beware of covetousness"; and Paul says plainly to Timothy: "Godliness with contentment is great gain" but "the love of money is a root of all kinds of evil", wrecking the life. But suppose one has plenty? (v. 31) He must do two things: see carefully that it does not come from injustice to others and, if it is really honest and clean money, then share it with the needy, for that is what God expects of us. Community welfare depends upon individual gifts of money, time and skill. And national life? (v. 34) The Declaration of Independence was a protest against oppression by the king. The American Revolution brought us freedom, and the mother country learned her lesson. The United States Constitution was framed in a noble spirit to secure "one country, with liberty and justice for all". But these famous documents could not produce a righteous nation. Only religion can do that. God has exalted us beyond our deserts, but there are still many sins which are a reproach to us—drunkenness, prostitution, distressing labor conditions, and (to borrow a word from the proverb) rottenness. A man speaking to a Woman's Club said: "You women complain of politics as rotten—not half so rotten as business!" If the Christian people in America cared enough, they could clean up all these dirt-spots, even now. And there is the pressing responsibility of sharing the Gospel with the great majority, still non-Christian.

The verses from the Psalms remind us of how the world looks to God who made it. The stars are true to their orbits; the sun and the moon give light as He has ordained. But man is unresponsive, slow to learn, unstable. Israel was blessed when they set out to be God's people. And we are deeply indebted to them for our Bible and for our knowledge of God. But how often they wandered away! "The eyes of the Lord are in every place, beholding the evil and the good" (Prov. 15:3). And our Psalm brings all nations under the gaze of Him who made all hearts. Today we Americans are no longer the sole custodians of freedom; but we have a great part to play in the coming years if we can build up righteousness in the land. "We must hope and work for the day", says Dr. Hutton, "when dealings between nations shall be according to the highest standards of honor and frankness between man and man".

CIRCLE PLANS

WHEN YOUR CIRCLE STUDIES *Day-Dawn in Yoruba Land*

by Charles E. Maddy, executive secretary of S.B.C. Foreign Mission Board, an abundance of practical suggestions will be found in the following discussion by Mrs. Lee J. Owsley, Ky. W.M.U. mission study chairman. She discusses the teaching of the book as follows:

All circles studying *Day-Dawn in Yoruba Land* will find it intensely interesting. The author is a gifted writer with a loving heart and a wide experience of mission lands. We have in this study a comprehensive review of missions in Africa. (For price etc. of book, see page 15 of this magazine.)

A well informed and enthusiastic teacher can and will hold the interest of her class; therefore, the mission study chairman should select her with great care, giving ample time for thorough preparation. Advertise class extensively. Booklets may be made in shapes of men, women and maps of Africa, with covers cut from black construction paper. Send them as invitations to all who should attend this class.

Suggestions to Teacher—Read book through. Re-read, marking for assignments. Use every means possible to create the proper atmosphere. Keep a large map of Africa before class constantly. Compile a loose-leaf notebook of pictures of the country and its people, listing the names (*with picture, if possible*) of all missionaries sent to Africa, giving date sent, terms of service and location. Collect curios. Ask members to help gather the above material. Use the talents of your class as often as possible. The more they are used the more they will receive from the study. Hold the number of class periods necessary to present the book intelligently.

Supplementary Materials—Read all books mentioned in footnotes. Pictures may be found in "*National Geographic*", "*Album of Southern Baptist Foreign Missionaries*" (75c from State Baptist Bookstore), missionary periodicals and other magazines.

Chapters I and II—Introduction—Take a few moments to honor the author giving a short sketch of his life. Read "*Livingstone, The Pathfinder*" by Mathews. For poster, mount on poster board a large map of Africa cut from black construction paper. (Secure from State Baptist Bookstore outline map, price 3c). Cut a white map of Nigeria and paste in proper location on black map. Compare size of Africa with other countries by cutting small colored maps of countries mentioned, placing same on black map. Present geographical, historical, agricultural and other items of interest concerning the people and country. Contrast the habits and customs of the people eighty-nine years ago with those of the present day.

Chapters III and IV—Missionary history and growth of work in Africa during first five decades—Read life of "Nannie Bland David" recorded in *Hand Maidens of the King* by Clark (prices 50c and 60c from State Baptist Bookstore).

Chapters V, VI and VII—For variety assign to members for presentation. Note the hand of God in the preparation and early training of those who are chosen for our mission fields.

Chapters VIII and IX—In closing, stereopticon slides showing existing conditions in Africa would be impressive; or have a talk from a missionary, if one is available. A question-and-answer period would be helpful and interesting.

Through her open doors Africa beckons to Christian opportunities. The challenge of this unfinished task rests heavy on southern Baptists. In this book we are fortunate to have the privilege of seeing Africa through the eyes of one of our most eminent missionary leaders. Your interest in Africa will be quickened through the study of *Day-Dawn in Yoruba Land*. Use it now!

BUSINESS WOMEN'S CIRCLES

Miss Isabelle Coleman, Virginia

SUGGESTIONS

(1) Adapt Mrs. Creasman's idea for "Turning Home Mission Pages" to "Presenting Panel Posters". Make the front wall of posters of the assembly room the focal points guiding the presentation of the program. (Pages 23-32)

(2) For poster, place card or program sheet, draw the two hemispheres and like ribbons, draw bars of music around these hemispheres. Upon these print the notes for the tune of "All Hail the Power of Jesus' Name", the Kingdom's International Anthem. Above or underneath print: *Our Homeland Becomes the Host to the World. Shall those who come to the Baptist World Alliance see the Great Commission and the Golden Rule in action?* (See page 5, 36.)

(3) For poster announcing this B.W.A. meeting, draw a prism and let its seven separated light rays fall on a map of the southland. Inscription: "The light of God's Spirit active through mankind of our homeland is composed of many colors".

The Test—It is well that Woman's Missionary Union has chosen the homeland for July's consideration. And while her thousands of organizations fervently study about how they, as southern Baptists, are carrying out the Great Commission, a vast host of brother and sister Baptists from the ends of the earth will come to observe southern Baptists in action. They have heard of the prism of people to whom southern Baptists minister here in the south. They will be watching for this applied Christianity in Atlanta as they ride street cars and busses, move about the streets and World Alliance grounds. They will be looking for the American Indian, especially, and for the Negro. Some who come may never have seen either Indian or Negro. They have heard, however, that both of these colors are in the prism of light flowing forth from our home missions. What a responsibility, privilege, opportunity will be ours in Atlanta to make our every contact and every iota of behavior Christian! Dr. Louie D. Newton, our general chairman, is leading us in that direction. Much has he already done to establish a spirit of friendly and harmonious fellowship between the Negroes of Atlanta and the white Baptists of that host-city. But southern Baptists from every corner of the south must help Dr. Newton, if those who come from overseas are to return home glad-hearted and convinced that "in Christ there is no east or west"—no black or white—"but one great fellowship" of Christian understanding. So may it be in Atlanta, July 22-28: "Carrying Out the Great Commission in the Homeland!"

TOPIC: Carrying Out the Great Commission in the Homeland

Our Greatest National Need—Prov. 14:30, 31, 34; Ps. 83:8, 12-15—(Page 19)

Unto God We Sing and Pray—"America" and Chain of Prayers

Relating "The Great Commission and Home Missions"—(Page 23)

Praises: "America the Beautiful" and "The Homeland"—(Page 24)

Re-"Turning Home Mission Pages"—(Page 26)

Intercession for All Phases of Our Home Mission Work

Security: "Home Missions and National Righteousness"—(Page 29)

March! "The Annie W. Armstrong Offering"—(Page 30)



PROGRAM PLANS



Mrs. T. M. Pittman, North Carolina

With the PROGRAM COMMITTEE

BECAUSE home mission work is right at our doors it lacks the vague appeal of something different and romantic because of distance. Home missions in many instances means reaching the unsaved, helping the needy and training the untrained of our own locality. Then it stretches out to the borders of our southland, preaching to and serving people much like ourselves or like the people we have always known. Home missions carries with it personal responsibility, and that is much harder to bear than the responsibility we can pay to put upon the shoulders of others.

Among the subjects offered in the material (pages 23-32) given us for this program is that of gambling. A whole talk might be made on this topic since it is so rapidly eating into our American life. A judge recently spoke from the bench on this, saying it was even corrupting the lives of children. Someone offered a protest to this and the judge answered: "My own ten year old boy spent the fifty cents I gave him in some slot machine, and lost it all, I am glad to say. It may cure him". We know that many wages and much money given in charity and needed for food go to such machines or to "number rackets". How far are Christian women responsible? We all know women who have "risked just two dollars and a half on an Irish Sweepstake Ticket—I do need more money and might get a prize". We know others who would not miss a "jack pot night" at the moving pictures. They do not realize that this idea of getting something for nothing is harmful to character and leads to habits difficult to break. How can we guard young people against them if we ourselves stand over on that side of the line? A short introductory talk may be made covering the first part of the program through "Making Disciples in the Homeland". Emphasis may be given to the three B's: bountiful, blessed, baneful. Under this latter, gambling may be stressed. (Pages 23-26)

"Turning Home Mission Pages" should be carried out just as Mrs. Creasman has written it if possible. Large pieces of cardboard of different colors may be purchased in cities. In even small towns the colored crepe paper may be bought in almost every color. Twelve topics are given and almost as many colors suggested. How fine it would be to have twelve women take part in the program. This will bring the women to the meeting and get them used to taking a small part in the program. If twelve speakers cannot be secured in your society have twelve hold up the pages in turn and one, two or three women make the talks. (Pages 26-29)

One of the important things to remember is that our societies are training schools. When we depend upon one or two women to conduct every program or when we search the community for someone to come and make a talk, we are failing to receive the development we need. We just get lazy.

In concluding the program, the leader may speak of "Home Missions and National Righteousness" and of the importance of the Annie W. Armstrong Offering. Probably the Home Mission Board is conducting some special work in your state. When this is the case, a place should be made on the program for a brief account of this work. A fine motto for the meeting would be: "Our Land, a Base of Supplies and a Demonstration Station". The women should be urged to pray with renewed earnestness for our own country, for all in authority and for those who rule throughout the world. (Pages 29-31)



PROGRAM for JULY



The list of reference material given at close of this program is the chief source used in the preparation of this program, and credit is hereby given for facts and suggestions derived therefrom as well as for matter quoted in whole or in part. Further interesting material and help may be found in this listed material and in leaflets suggested in this number which may be obtained for a few cents from W. M. U. Literature Department, 1111 Comer Bldg., Birmingham, Ala. See list of leaflets on page 3.

Prepared by Mrs. C. D. Creasman, Tennessee

THEME for YEAR: The GREAT COMMISSION—OUR MISSION

TOPIC for MONTH—Carrying Out the Great Commission in the Homeland—Acts 1:8

Hymn for the Year

—Watchword for the Year

Bible Study—Our Greatest National Need—Prov. 14:30, 31, 34; Psa. 33:6, 12-15 (Page 19)

Prayer that righteousness may prevail in our nation

Hymn—Faith of Our Fathers

The Great Commission and Home Missions

The Homeland

—Hymn—America the Beautiful

Making Disciples in the Homeland

—Turning Home Mission Pages

Prayer for God's blessings upon all the departments of our home mission work

Home Missions and National Righteousness

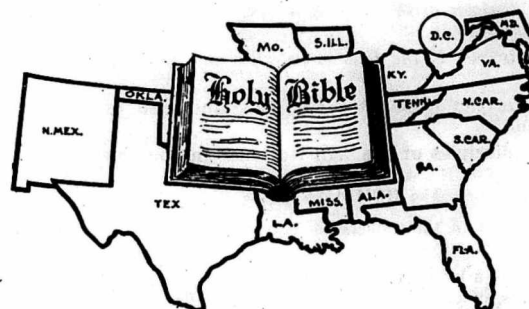
—Annie W. Armstrong Offering

Prayer thanking God for the blessings of this offering

—Benediction (Page 32)

Hymn—America

The GREAT COMMISSION and HOME MISSIONS



In our study of the Great Commission we come this month to a consideration of the part that home missions has in the program of the Great Commission. Certainly we believe that Jesus included among the "All Nations" of the Great Commission our own nation. The Great Commission

makes no mention of state, home or foreign missions but gives a world program, which of course includes our own as well as other lands. On one occasion when Jesus gave His missionary command He outlined the program of work somewhat as we have it today, saying: "Ye shall be My witnesses both in Jerusalem and in all Judea and Samaria and unto the uttermost part of the earth". Or to state it in terms of our southern Baptist program: "Ye shall be My witnesses in your home community, your state, your homeland and to the uttermost parts of the earth". On another occasion Jesus said that the Gospel should be preached "in His name unto all nations, beginning from Jerusalem". Dr. J. B. Lawrence, executive secretary of our Home Board, calls our attention to the fact that the

word used here is not "at" but "from". "Beginning 'at' Jerusalem might denote only a point of departure, but 'from' Jerusalem implies a base of operations. Any place might do as a starting point if the disciples were only leaving on a journey, but since they are beginning a campaign of conquest there must be a base of operations. 'From Jerusalem' reveals the source, the fountain, the dynamic of the missionary enterprise; it implies not simply a starting point, but a sending power. To begin our mission work 'from Jerusalem' means to maintain an all-comprehensive, victorious mission program at home as a means to world evangelization".

So we see that home missionary work is necessary if the Great Commission is to be carried out to its ultimate consummation. We cannot hope to make disciples of all nations unless we also do our utmost to make disciples in our own nation. The more Christian America becomes the more powerful will be our Christian message among the nations.

Dr. Lawrence emphasizes the importance of home missions in the program of world evangelism as follows: "In this work of Christianizing the homeland, we are serving the world. A triumphant missionary program in our own country is necessary if we would push our conquest for Christ in lands afar. A Christianity which does not conquer at home will not be able to conquer abroad. We cannot give what we do not have. An unsaved America is a poor evangel for a world's salvation. We must show by Christianizing our own land what the Gospel we preach will do for other lands. We must make our land not only a base of supplies but a demonstration station as well".

We believe that we hear Jesus saying to us through the Great Commission:

Go ye and make disciples, beginning from America.

Go ye and make disciples of the Negroes in Africa and also of the Negroes in America.

Go ye and make disciples of the Italians in Italy and also of the Italians in your own land.

Go ye and make disciples of the Jews in Palestine and also of the Jews in America.

Go ye and make disciples of the Chinese in China and also of the Chinese in your own land.

Go ye and make disciples of the "All Nations" in your own land.

The HOMELAND

The most favored spot of the universe is our own beloved southland. We feel that this is so because:

It is a *beautiful* land—a land of towering mountains and wide prairies, of vast forests and mighty rivers, of great cities and picturesque villages, of streams and lakes, of caves and canyons, of fruits and flowers—a wonderland of charm and loveliness.

It is a *bountiful* land. In richness there is no country like it in all the world. Wealth grows in fleecy cotton and golden grain on its fields, hangs in luscious fruit from its trees, grazes in sleek cattle on its plains, gushes in rich streams from its oil wells and is dug in precious ore from its mountain sides. "The sun in its daily journey around the earth looks down upon no territory of given size comparable to this southland of ours in material wealth".

It is a *blessed* land—blessed not only with material blessings but with spiritual blessings unequaled in any other land in the world. Here is peace. Here is lib-

erty. Here are opportunities to study, learn and achieve. Here all may express their religious convictions and may worship God as they desire. Here, perhaps more than in any other place in the world, Christian principles are the measure of conduct, and Christian ideals the goal of character.

Yes, ours is a beautiful, a bountiful and a blessed land. But there is another word beginning with "B" which can also be applied to our southland. It is, in many respects, a *baneful* land. Many baneful conditions threaten to rob our land of much of its beauty, bounty and blessedness. Crime, lawlessness, intemperance, immorality, lack of emphasis on spiritual things, are some of the sins prevalent in our land. It is estimated that last year the people of the United States spent half as much for booze as for food and over twice as much for booze as for education. Gambling is growing at a terrific rate. In the United States there are 250 factories which operate for the exclusive purpose of making gambling devices. In the United States a major crime is committed every twenty-two seconds, and a large per cent of the crime is in the southland.

Many baneful influences are working on the hearts and the minds of people, leading them away from the things that have made our land the most blessed in the world. Communism is working at the very foundation of our American liberty. Undemocratic ideals threaten the safety of our government. Roman Catholicism is putting forth every effort to control our country and bring its government under the domination of the Vatican.

These baneful conditions and influences exist because so many American people are not Christians. At least twenty million in Southern Baptist Convention territory are unchurched. Only 8 per cent of the people of our nation attend church on Sunday morning, only 2 per cent on Sunday evening and less than 1 per cent attend the prayer meeting. On the other hand, 70 per cent attend the picture show at least once a week. We call our country Christian, and we feel that the most Christian part of it is our beloved southland, but all of these conditions reveal the fact that it is far from Christian and that it is one of the most challenging mission fields in all the world. We know that it is the Gospel of Jesus that has made our homeland the best in the world. The power of this same Gospel will remove from her every baneful influence and will keep her always beautiful, bountiful and blessed. Then how important it is that we spread that Gospel to the utmost limits of her boundaries.

MAKING DISCIPLES in the HOMELAND

EVER since the organization of the Southern Baptist Convention, 94 years ago, southern Baptists have had a Home Mission Board through which they have worked to make disciples in the homeland. During this period home missionaries have baptized 865,000 which is equal to one out of every five of our total number of church members. They have organized 8,600 churches, which is equal to one out of every three of our total number of churches. Speaking of the work of our home missionaries Dr. Lawrence says: "They were pioneers, moving westward with the tides of population from the Atlantic seaboard and planting the Baptist faith in the new frontier settlements. He who clears the ground for the first crop prepares for all future harvests. This was the type of work done by the missionaries of the Home Mission Board. The first churches in practically all the large cities of our land today were planted by home missionaries and supported by the Home Mission Board. These churches are the mother churches of the denomination".

The nature of home mission work has changed with the passing of the years. We have no longer geographical frontiers. The days of covered wagons and prairie

schooners are over. But there are social, racial and economic frontiers just as challenging as were the new lands of the west a half century ago. Our frontiers now lie in our crowded cities, our congested industrial areas and our tenant farmers in our country districts.

"Home missions in the future must look to the evangelization of these cities and to the reaching of the tenant farmers in neglected country districts; to the reaching of our godless rich and the unchurched masses of the 'up and out' as well as to the evangelization of the underprivileged in the congested industrial centers; to the establishment of a Christ-like social order as well as preaching the Gospel to the Indians and foreigners. Home missions in the future must, therefore, not only work for the evangelization of those who have never had a chance to know Christ and the power of His Gospel, but for the salvation of the civilization of our land as well".

Surely the needs and opportunities of home mission work are greater than ever before. We are glad to know that through our Home Mission Board we have now 371 missionaries working in 756 mission stations. Forty-one of these missionaries were added to the force last year, and 62 new mission stations were opened. Through the work of these home missionaries over 5,000 were led to make a profession of faith in Christ, and almost 4,000 were added to the churches.

While we rejoice over the splendid work of these home missionaries we are reminded that this is a small group to meet the challenging needs of our great home mission field. The field is white and the laborers are few, and we need not only to pray that God will send forth laborers into His harvest, but we need to give the necessary money to support them. Only thus can we obey the Great Commission of our Lord by making disciples of those in our own nation.

TURNING HOME MISSION PAGES

(Make a large book with a page representing each department of home mission work. The cover page should have a map of the southland with a cross across it, and the words **OUR HOMELAND FOR CHRIST** printed below. Make the rest of the book, using a different color for each page. The colors should be as follows: Indian page, dark red; the Negro page, black; the mountain page, green; the Spanish page, bright red; the Italian page, orange; the French page, bright blue; the Chinese page, yellow; the Jewish page, royal purple; Dyess Colony page, red, white and blue; the deaf page, brown; the city page, gray; and the evangelistic page, white. Then name of the department represented should be printed in large letters on each page and, if desired, pictures illustrating the work of the departments may decorate each page. Each speaker comes forward and turns a leaf of the book to show her page. Or one speaker could give the whole part, turning the pages as she speaks. It will be effective if the suggested music is played softly on the piano while each part is given.)

Leader—I invite you to see our home mission work as a book—a book of many pages, each page representing some phase of missions in the southland. One by one we will turn these pages, looking thereon to find interesting information about interesting home mission peoples and what we are doing through home missions to make disciples of them.

Indian Page (Music—"Indian Love Call" or any other Indian music)—My page is red, for it represents our work among the red race. It is the first page in this home mission book, as it should be, for the Indians were the first people to live in our land, and the first home mission work of southern Baptists was done among them. By far the most of our southern Indians live in Oklahoma, that state whose name means the "Home of the Red Man". But there are still small

groups in Florida, Alabama, Mississippi and North Carolina with still larger groups in New Mexico and Arizona. Our Home Board is doing work among all of these, with sixty-nine missionaries, forty-nine of whom are Indians themselves. If you could see the pictures that belong on this page you would see many groups of faithful Indian Baptists, gathering in their churches for meetings of different kinds. All of their meetings, even their associations, are evangelistic, for these Red Men have great zeal for the salvation of the lost.

Negro Page (Music—"Swing Low, Sweet Chariot")—My page is black, for it tells the story of the eleven million black people in your land. On this page are pictures of many Baptist churches and many groups of faithful Negro Baptists who worship in them. Three million of our American Negroes are Baptists, constituting the second largest Baptist body in the world. The special need of these is trained leaders. Our Home Board provides twelve teacher-missionaries who work in twelve centers in eleven states, giving their full time to the teaching and training of Negro leaders. They work not only through regularly established schools but hold Summer Institutes for preachers and others who are not able to go to the schools. Over 4,000 students were reached by these missionaries last year and through these students many were won to church membership.

Mountain Page (Music—"Higher Ground")—My page is green, suggestive of the forests that make our southern mountains a beautiful green in color. As you behold this page you can almost feel the fresh mountain breezes, almost smell the fragrance of mountain flowers, almost hear the singing of the mountain birds and the trickling of the mountain streams. And surely you can see the multitudes of mountain people of the purest Anglo-Saxon blood in our own nation, stalwart and strong and yet many of them needing the Gospel. Dr. J. W. Beagle says that the mountains of the south present the largest and most challenging, as well as the most difficult, mission field we have. "Only men and women whom God has called and equipped can succeed in winning and developing the people of the highlands in our territory". We have nine such missionaries, five working in Kentucky and four in Tennessee. These report 387 conversions last year.

Spanish Page (Music—"La Paloma")—My page is bright red, suggesting the Spanish people who love gay colors and a gay life. In our southland are three groups of Spanish people. First, there are the Cubans in Florida. For long a successful work among Cubans has been carried on in Tampa and last year a new work was opened up in Key West, where live 6,000 Cubans. The 35 Cuban members of the First Baptist Church and their pastor are cooperating with the Home Board in this work. The largest Spanish group in the southland is the Mexicans. We have 95 missionaries among them, which is our largest group of home mission workers. The Spanish-Americans of New Mexico constitute our third Spanish group. These are people who have been in America for generations but who are still Spanish in language and customs. We have ten workers among them who won to Christ last year 117.

Italian Page (Music—"The Italian Hymn, 'Come Thou Almighty King'")—I have made my page orange suggesting the attractive, artistic Italian people in our southland. Our centers of Italian work are Tampa, Florida; Ensley, Alabama; Kansas City, Missouri; and Krebs, Oklahoma. A special achievement last year was the completion of a new chapel for our Italian work in Ensley, Alabama. It is located adjoining the Good Will Center, which is also for Italian people. Our eleven workers among Italians won 159 to Christ last year.

French Page (Music—"The Marseillaise Hymn")—I have chosen the lovely blue color to represent the lovely French people of Louisiana. Since blue stands for truth it might also suggest their great need of the truth of God's Word. These

have been citizens of our nation for many generations, but they live apart, not speaking our language and knowing little about American life. They are Catholics and are therefore kept ignorant of the truths of the Bible. Our work among them is of two kinds: direct missionary work and school work, though of course the schools do missionary work too. In central Illinois two missionaries serve nine mission stations and in southern Louisiana 13 workers serve six churches and seven outstations. Acadia Academy in Louisiana is doing a wonderful work in training leaders for French missions. A new project is the Home Mission Board School in southern Illinois, which had last year 44 day students, among them "grown ups" as well as children. Our French workers report 290 conversions last year.

Chinese Page (Music—"Jesus Loves Me", the favorite Christian song of Chinese children)—My page is yellow, suggesting those of the yellow race in our southland. The Chinese are most numerous in Texas and the Mississippi delta. Therefore we have two centers of Chinese work. One is in San Antonio, Texas, and the other is in the delta region of Mississippi and Arkansas. A beautiful work of the San Antonio mission recently was sending 700 garments to refugee children in China. All of them were made by Chinese mothers in the mission, under the direction of Miss Ollie Lewellyn, our Home Board missionary. In Columbia, Mississippi, last year a school was erected, costing \$11,000, most of which was given by the Chinese people themselves. The Home Board plans to provide them with a chapel for worship and other religious activities. We have three workers among Chinese; 17 conversions were reported last year.

Jewish Page (Music—"Zion Stands with Hills Surrounded")—This page is royal blue, telling the story of the people of the King of kings. Our one missionary (Rev. Jacob Gartenhaus) to the Jews, reporting his work of last year, says: "Opened doors, hungry hearts and the happy faces of Jewish believers have greeted me on all sides. Numerous letters from Christian friends have been pouring in, bringing the cheering news of remarkable Jewish conversions". The Baptists are showing their interest in the Jews by organizing "Friends of Israel" groups in many places. These are having remarkable experiences in contacting their Jewish friends and it is in such communities that our missionary is able to render his most fruitful ministry.

Dyess Colony Page (Music—"Help Somebody Today")—This page bears our national colors (red, white and blue), for it represents our work at Dyess Colony, a government project of resettlement in Arkansas. There 16,000 acres of swamp land have been reclaimed by the government and about 3,000 people, "mired in the swamp of spiritual and economic depression, have been reclaimed from cities and towns and given a new chance on this new land". In this new country with its new residents are great need and great opportunity for missionary work. Our two missionaries there (Rev. and Mrs. Harvey Gray) completed their first year with really remarkable achievements. They had won 78 to Christ and had baptized 68, making a total of 220 members in the church.

Deaf Page (Music—"Tell Me the Old, Old Story")—How splendid it is that our Home Board is remembering those whose ears cannot hear the Gospel but whose hearts can hear and receive! My page tells the story of what our Home Board is doing to give the Gospel to the 45,000 deaf people in our southland. Seven missionaries tell the old, old story of Jesus and His love in the sign language to the deaf in 122 classes and mission stations. Through the work of these the hearts of 114 heard and responded to the Gospel last year and were baptized.

City Page (Music—"Where Cross the Crowded Ways of Life")—This page is gray in color, telling the story of the drabness of the lives of many people who

crowd the busy streets of our southern cities. Our Home Board makes possible three rescue homes: two in New Orleans, one for men and one for women; and one in Jacksonville, Florida. These are doing a wonderful work in reaching and making disciples of the "down and out" who wander into these places of love and cheer. Over 600 were converted in Home Board Rescue Homes last year. We also have in our cities Good Will Centers which reach many underprivileged people. Our Home Board helps with 8 of these which contacted nearly 1,000 people last year. These reported 34 baptisms. In East St. Louis we have 5 missionaries who work among different groups of foreigners. These were successful in making disciples of 17 people last year.

Evangelistic Page (Music—"Jesus Is Tenderly Calling")—The page of evangelism is white, suggesting that the purpose of evangelism is to wash the souls of men in the blood of the Lamb that makes them white as snow. The Home Mission Board has a department of evangelism with a superintendent, Dr. Roland Q. Leavell, whose special work is to promote evangelism throughout Southern Baptist Convention territory. It is this department that first planned and is now promoting the evangelistic campaign of this year. The whole southland has been organized for the purpose of encouraging every Baptist church in the Southern Baptist Convention to have a revival some time during the year and of marshaling the forces of southern Baptists in the greatest soul-saving effort they have ever known. Already revivals have been held in many churches and still others are planned for the fall. It is the purpose of Dr. Leavell and others who work with him that a more extensive and intensive evangelistic program be set up for 1940 than we have had during 1939. He says: "May God grant that a wide, all-encompassing evangelistic program may be carried forward during 1940 in such a way that we shall live to see the world-wide revival for which we have been praying". (See page 5.)

Leader—We have turned the leaves of our Home Mission Book one by one, beholding the wonderful work done by the different departments of the Home Mission Board to make disciples of "all nations" in the homeland. On the cover page of our book is a map of the southland with a cross almost covering it. Below are the words: "Our Homeland for Christ". It is the purpose of home missions that the message of the cross shall be given to all living in southern Baptist territory, thus claiming our homeland for Christ.

HOME MISSIONS and NATIONAL RIGHTEOUSNESS

"HAPPY the nation whose God is Jehovah" sang the Biblical psalmist. Our nation has been the happiest nation in the world because she was founded on Christian principles and because so many of her people have made Jehovah their God. And we know that all of her problems of today are caused by her people setting up other gods to worship rather than Jehovah. Money, pleasure, social position, political advancement, worldly achievements and other materialistic ideals have become their idols. Thinking people as they behold present conditions and the threatening collapse of our American civilization ask, "What is the solution to all of our problems? What can save America?" We who are Christians know that there is but one answer to these questions—the Gospel of Jesus Christ. We can save civilization by Christianizing it. We can make our nation happy and prosperous by making Jehovah the God of her people. National righteousness means national permanence and national greatness.

And right here is where home missions comes in. Home missions is a mighty force for Christianizing our nation. Home missions is a mighty influence for pro-

ducing national righteousness. Home missions is doing much to make Jehovah the God of many of America's people.

The great evangelistic program of southern Baptists promoted by the Home Mission Board is perhaps doing as much to save our country and promote national righteousness as any other one movement in the land today. Every one of our missionaries is trying to save lost souls, and every time a soul is saved our nation becomes a better and stronger nation. Scattered over our homeland from Baltimore to Arizona and from Missouri to Florida are soul saving stations operated by the Home Mission Board, each one of them a center for the promotion of national righteousness.

Home missions is doing much to solve the race problems of our nation. When those of different nations become Christians and practice the true spirit of Christ in their daily conduct, all of them become brothers and live together in peace and happiness. That Good Will Center worker who gathers the children of many nations together in one club, that missionary who is training Mexicans in ideals of Christian living, that Jewish worker who is helping Baptists to become Friends of Israel, that missionary who is assisting the Negroes to find places of useful service among their own people—these and all other home missionaries are rendering immeasurable service in helping our nation solve her race problems.

Home missions is helping to solve the labor problems of our country. Changed hearts make changed lives and changed lives produce changed attitudes on the part of both employers and laborers. As home missionaries work to Christianize itinerant crop sharers, the miners, the factory workers, the Negroes in our fields and our kitchens and all of the other laborers in our country, as well as those who employ them, they are helping to solve labor problems and to produce national righteousness.

Home missions is our chief defense against war, communism, intemperance, crime, immorality and all the other evils which threaten our national life. There is no better way of fortifying our land against all evil and promoting national righteousness and welfare than by the support of our home mission work through which, every year, thousands of the citizens of the southland are becoming Christians. When a man of any race accepts Christ he becomes a better man, a better American and a promoter of the highest ideals of our American nation. Then let us be busy making disciples of all nations living in our southland.

ANNIE W. ARMSTRONG OFFERING

EVERY March the hearts of southern Baptist women and W.M.U. young people center on making disciples in the homeland as we observe the Week of Prayer for Home Missions with the Annie W. Armstrong Offering. Wonderful are the blessings coming to home missions through this season of prayer and offerings! When we realize that a large majority of our home missionaries are supported by the Annie W. Armstrong Offering we wonder if the work of home missions could have gone on without it. Dr. Lawrence frankly says that during the depression years this offering saved our home mission work and then adds: "At best, however, this is an unimaginative and prosaic statement devoid of the heart-throbs that beat in the breasts of the living, loving, self-sacrificing missionaries who, supported by the gracious gifts of the W.M.U., are out on the horizon-line of great endeavor pouring out their souls in life-redeeming service for the lost in our own land. To know what it means to save our home mission work one must catch a vision of these missionaries and the need of the ones to whom they go with the Gospel of Life". (See page 32.)

In the 1938 report of the Home Mission Board we find this expression of appreciation of the season of prayer and gifts for home missions—

"We rejoice in the interest Woman's Missionary Union has taken and is taking in the work of winning the homeland for Christ. The recurrence of the season of prayer and the offering made for home missions during this period is hailed with increasing interest by the many thousands of women in our churches. Even if no offering were made, the observance of the occasion would be amply justified in view of its spiritual uplift, its impetus to deeper consecration, the wider vision created and the helpful and stimulating information furnished by the splendid programs. It is, however, a time of sacrificial giving which, in the aggregate, helps mightily to swell the stream of their benediction to our great home mission cause. The missionaries supported by this offering are stars in the crown of Woman's Missionary Union".

We wish that we had an expression from each of our home missionaries as to what the Annie W. Armstrong Offering means to them in their work. We are sure that each one would thank us for making it possible to stay on their fields and would make us realize that by our gifts and prayers we are sharing in the blessed results of their service.

This year there is a new group ready to express thanks for the Annie W. Armstrong Offering—the Home Mission Board Margaret Fund students and their parents. Yes, beginning this year a part of the Annie W. Armstrong Offering is designated for the college education of the children of all regularly appointed S.B.C. home missionaries, whereas formerly it had not helped any who resided in the United States. This makes it possible for them to share in the benefits of the Margaret Fund, which has for many years been a great blessing to S.B.C. foreign missionaries, their children and to those from Cuba and the Canal Zone.

To the Home Board's executive secretary, to our home missionaries, to the home mission Margaret Fund students, to every department of our home mission work and to the generous hearts of all southern Baptist women and young people the Annie W. Armstrong Offering is a great blessing. Miss Armstrong, the great friend of home missions, went to her Heavenly home this past December, but through this offering named for her she lives on to bless the cause she loved.

BENEDICTION

Leader—With our hearts centered on our beloved homeland as one of the "All Nations" of the Great Commission let us repeat together our benediction:

"And Jesus came to them and spake unto them saying, "All authority hath been given unto Me in Heaven and on earth. Go ye, therefore, and make disciples of all the nations, baptizing them in the name of the Father and of the Son and of the Holy Spirit, teaching them to observe all things whatsoever I commanded you; and lo, I am with you always, even unto the end of the world". —*Matt. 28:18-20*

Obedience to this final command of the crucified and risen Christ is the love test that He gave to His church and will be the basis of our future reward or condemnation. To carry out this Great Commission is the main business of every blood-bought disciple.

I am one of those blood-bought disciples. I must obey.

QUESTIONS for REVIEW and DISCUSSION

1. Give reasons why home missions is included in the Great Commission.

2. Mention some of the baneful conditions and influences that threaten the safety of our country.
3. Discuss present day frontiers of home missions.
4. Name some of the departments of our home mission work.
5. Which one of these makes the strongest appeal to you and why?
6. Who is executive secretary of our Home Mission Board?
7. How many home missionaries can you name?
8. Discuss home missions as a promoter of national righteousness.
9. Tell something of the blessed service of the Annie W. Armstrong Offering.
10. Discuss the new plan for the education of the children of home missionaries residing in United States as well as in Cuba and Canal Zone.

REFERENCE MATERIAL

World Comrades	—The Window of Y.W.A.
Southern Baptist Home Missions	—State Baptist Papers
Latest Report of Home Mission Board	
Taking Christ Seriously	Dr. J. B. Lawrence
Go Forward	Mrs. Joe Burton
The Keys of the Kingdom	Mrs. Una Roberts Lawrence

ANNIE W. ARMSTRONG OFFERING

BY May 6 the Home Mission Board had received \$83,269 of the offering which the reports from the state W.M.U. offices show has gone beyond \$147,460. Of this marvelous total there is resultant toward the southwide goal \$134,685. The \$125,000 goal is thus surpassed by \$9,685. The August issue of this magazine will carry the record made by each state for this Annie W. Armstrong Offering. In the meanwhile sincerest thanks are expressed to God and to each W.M.U. member who made this unprecedented victory possible.

"Faith Gilda with Light the Grave"

THUS it was for Mrs. Edna R. Harris, who passed the portal of death into Immanuel's Land on the evening of Saturday, May 7. The week's work was over, the Sabbath's rest was anticipated: how typical of her life of industry and devotion! When a young woman she was left by tragic circumstances to provide for her little ones. Bravely did she assume her duties, working with "faith, hope and love" in at least two public positions. One of these was with the blind boys and girls of North Carolina and the other was as corresponding secretary of Woman's Missionary Union of that state. Thus it came to pass that she not only nurtured her own children who "rise up and call her blessed" but she also guided many others unto the Heavenly Father. During her thirteen years as the North Carolina secretary she exerted an ever widening influence for righteousness as by her words and her works she led the W.M.U. of her state to be increasingly powerful through prayer and gifts of self and substance for the needy near and far. To the Woman's Missionary Union of North Carolina, as well as to the home circle of Mrs. Harris, the tenderest sympathy goes forth. May each find comfort in the assurance that her path, which was that of the righteous, has led into Immanuel's Land.

TRAINING SCHOOL

Miss Carrie U. Littlejohn, Principal, 384 E. Broadway, Louisville, Ky.

COMMENCEMENT at the TRAINING SCHOOL

ON the evening of May first forty-six graduates came down the aisle of the Heck Memorial Chapel for the thirty-second annual commencement. They marched to the strains of the traditional "Take the light, the wonder and the glory of the light".

The chapel, which holds many fond memories for every Training School girl, was beautifully decorated with spring flowers. The audience was a large one, composed of the numerous people who are friends of the School and the graduates. The white dresses of their junior sisters formed a fitting background for the white caps and gowns worn by the seniors.

At the close of the processional Dr. Kyle M. Yates gave the invocation. Preceding the main address, Mendelssohn's "Ye Sons of Israel" was sung by the Training School octette.

Miss Littlejohn introduced Mrs. W. S. Abernethy, who spoke on "The High Calling". The speaker, whose husband is pastor of the Calvary Baptist Church in Washington, D. C., is a well known Christian worker in the national capital. Her varied interests and abilities are reflected in the places of responsibility she has filled in recent years: teacher of a class of three hundred business women in her own church and membership on two important boards of the Northern Baptist Convention—the Woman's American Baptist Foreign Mission Society and the Board of Finance and Promotion.

Mrs. Abernethy spoke of the women who have been leaders down through the ages. She showed how Christ has used women in His service since the beginning of His ministry on earth. To the members of the graduating class, Mrs. Abernethy presented the challenge to follow their high calling in whatever field Christ might send them. Following Mrs. Abernethy's address the octette sang Schubert's "The Lord Is My Shepherd".

Miss Littlejohn used the final charge of Moses to the Children of Israel, recorded in Deut. 30:16, as the basis of her challenge to the senior class. This charge was to love the eternal God, to live His life and to follow His orders. The accompanying promise was that God should bless them in the new life they are entering.

Those receiving Master of Religious Education degrees were: Misses Gladys Frost, Ala.; Ruth Cochrane, Ark.; Evelyn Collins, Louise Doyle and Mary Wilson, Fla.; Hilda Beggs, La.; Mae Chapman, Margaret Marchman, Virginia Mathis, Dorothy Tippet and Ellene Wiggins, Ga.; Alice Giffin, Minn.; Rowena Gunter and Mesdames Elizabeth Ann Price and Ruby Peoples Treadway, Miss.; Misses Edna Hedden, Gwendolyn Johnson, Maude Weber and Lola Wilson, Mo.; Isabel Morgan, N. C.; Ruby Howse, Okla.; Nancy Barton, Anna Murchison, Marian Peeler and Sarah Stephens, S. C.; Louise Gulley, Janie Sue Jones and Dorothy Mayer, Tenn.; Elizabeth Provence, Tex.; and Constance Hall, Va.

The following received Bachelor of Religious Education degrees: Mesdames Crystal Cade Bennett, Fla.; and LaVerne Johnson Garrett, Okla.; Misses Helen Lambert, Ill.; Ethel Richardson, Ky.; Margaret Jung and Lorena Miles, Va.; and Kiyoko Shimose, Japan.

Certificates were awarded the following girls: Miss Ruth Gardner, Ala.; Mrs. Eunice Fuller Allen, Fla.; Misses Mary Dyson, Ga.; Alene Crutcher, Ruth Dohrmann, Lucile Lynch, Susie Payne Petty and Emma Watts, Ky.; and Ruth Napier, S. C.

A fitting close to the beautiful commencement service was the chant, "He shall give His angels charge over thee . . . There shall no evil befall thee". Dr. J. McKee Adams pronounced the benediction, and the class of 1939 marched for the last time down the aisle of the chapel going out of House Beautiful into Life Beautiful, a life of service to God and humanity.—Antietam Dispatch (40), Tenn.

MARGARET FUND

Chairman: Mrs. H. M. Rhodes, Tennessee

Guard that which is committed to thy trust.—II Cor. 3:4

THE ABOVE VERSE is the new watchword for the Margaret Fund for use during the new S.B.C. year, adopted by the committee as it met in Oklahoma City at the Biltmore Hotel on May 15. Mrs. D. H. Bell, chairman for Oklahoma, suggested this verse.

Mrs. W. B. McGarity, Texas Margaret Fund chairman, led the devotional. It was based on the watchword of last year: "Be thou diligent to know the state of thy flocks and look well to thy herds".—Prov. 27:23

The coming together of the state chairmen or their representatives, for our only meeting during the year, proved to be a happy, profitable occasion. We had a good representation of chairmen—those absent sending their state presidents or secretaries in their stead.

It was decided to promote a more concerted program in connection with Margaret Fund work. As soon as it can be "worked out", some definite material will be published for special Margaret Fund programs; but until then, you may use material found in former *Royal Service* magazines. The special programs will be promoted by your state chairman but, to hasten this information along, it is herewith mentioned. Inquire of her what her plans will be—that of a special "Margaret Fund" day with silver tea, special program etc., or some other plans for promoting interest and distributing information about Margaret Fund students. Instead of, as heretofore, where there has been "hit and miss" sponsoring of the students, we shall now make these gifts toward a fund to be known as the "Burney Gifts"—named in honor of our former Margaret Fund leader, Mrs. Frank Burney, who so beautifully planned for and directed this precious work for so long. The collected "Gifts" will be sent please to your state chairman, designating them as "Burney Gifts" so there will not be any confusion with other monies. There will then be occasional gifts sent to all students in equal amounts. Enthusiastic was the response from the chairmen, as this arrangement was proposed to aid in caring for some of the "extras" that come to our students. This arrangement gives a fairer distribution of funds to the students and should lessen the perils of "overdoing".

The attention of students and parents is called to a slight change or clarification of the granting of scholarships. The \$250 scholarship shall apply only to college years; those receiving aid before or after college shall receive a \$200 scholarship.

Due to the fact that Miss Vonnice Lance retired as secretary of the southwide Margaret Fund Committee, it was necessary to elect a new secretary. We are grateful for Miss Lance's splendid, faithful service in this capacity and regret exceedingly that she shall not serve us further on the Margaret Fund Committee.

Miss Elma Cobb, chairman for Arkansas, was the unanimous choice of the committee for secretary. Your southwide chairman was re-elected.

On Thursday of the Oklahoma City meeting, we enjoyed happy fellowship with the Oklahoma Margaret Fund students and some former students—as also, some Margaret Fund mothers—when we came together for the luncheon of the Margaret Fund Alumni Association. This had been arranged for by Mrs. Bell, the Oklahoma chairman, and was beautifully planned. We are indeed grateful to her for her untiring effort and lovely plans in spite of the severe handicap in the very recent loss of her husband. We have sympathized most deeply with her.

Mrs. Sadie Lawton Holloway of Dallas, Texas, was elected the president of the Alumni Association. Mrs. Eloise Glass Cautben, our former alumni secretary, has been appointed to service in China, with her fine husband, so she tendered her resignation. Present with us was another former student, Mary Lucile Saunders, who goes to China soon, under appointment of the Foreign Mission Board.

Remember our verse for the year, especially as the students are "scattered" this summer. Try to keep in touch with them and "guard that which is committed to thy trust".—Mrs. H. M. Rhodes

WOMAN'S MISSIONARY UNION, Auxiliary to SOUTHERN BAPTIST CONVENTION FIRST QUARTERLY REPORT — January 1 to April 1, 1939 Compiled by W.M.U. Treasurer

STATES	Reported by State Treasurers as Having Been Contributed by W.M.U. Members					Received by W.M.U. Treasurer					
	100,000 Club	Foreign Missions	Home Missions	Ministerial Relief	Christian Education	State Missions and Other Objects in S.B.C. Program	State Appt. Tr. School	W.M.U. Training School Current Exp. Ex. Com. S.B.C.	Scholarship Fund	Special Gifts	Total
Alabama	\$ 2,211.99	\$ 4,117.77	\$ 7,976.63	\$ 2,211.99	\$ 4,258.14	\$ 7,235.74	\$ 300.00	\$ 71.39	\$ 200.00	\$ 268.71	\$ 28,852.36
Arizona	73.00	51.17	403.01	6.91	16.90	385.56		1.07		1.00	938.62
Arkansas	1,079.78	2,968.57	2,149.96	223.89	1,987.42	7,695.82	100.59	30.30			16,236.33
District of Columbia	100.00		398.39					8.76		106.50	613.65
Florida	1,079.24	4,256.55	4,550.00	551.60	2,038.08	5,743.74	125.02	56.16	325.00	133.11	19,758.50
Georgia	4,365.78	2,978.10	10,813.35	11.00	15.00	32,082.08	572.19	81.92	100.00	619.36	51,638.78
Illinois	321.27	389.45	2,003.92		3,198.77	5,535.55	127.49	7.71		400.49	11,984.65
Kentucky	2,583.53	7,445.88	8,905.09	801.63	4,104.24	10,884.63		141.39	30.00	231.70	35,218.09
Louisiana	1,919.74	1,237.47	9,259.28	173.27	1,458.11	6,453.46		30.26		6.00	20,537.59
Maryland	54.50	922.30	1,895.16	267.12	254.46	1,992.03		23.07		2.00	5,268.75
Mississippi	1,076.60	2,398.48	5,771.73	267.12	2,682.19	4,564.31		33.74	15.00		16,796.17
Missouri	1,471.60	4,515.04	6,055.80	466.12	2,846.45	4,545.84	130.00	63.19			20,109.04
New Mexico	243.10	41.20	816.44			8,059.27		1.98		6.00	9,167.99
North Carolina	3,929.74	8,721.85	18,910.53	1,470.09	19,080.29	8,873.69		140.76		2.00	61,128.95
Oklahoma	1,346.50	8,807.60	7,567.48	231.40	1,868.10	12,103.62	425.00	17.69	300.00		32,667.39
South Carolina	518.23	4,652.29	7,767.18	947.89	768.99	11,541.31	100.00	127.59		2.00	26,725.48
Tennessee	3,383.12	8,769.70	14,596.79	1,595.92	8,328.99	10,555.34	1,500.00	144.07	500.00	2,000.00	51,373.93
Texas	3,630.20	24,042.95	24,042.95	2,329.28	21,107.76	56,484.08		151.22		2.00	120,431.99
Virginia	302.76	15,248.42	21,138.82	2,430.38	14,373.48	15,600.04		187.87		130.02	69,283.77
Special								.96			130.98
Totals	\$30,590.68	\$90,208.34	\$155,022.51	\$13,845.72	\$88,477.37	\$210,336.11	\$3,380.29	\$1,321.10	\$1,770.00	\$3,910.89	\$98,863.01

Value of Boxes, \$7,105.26

INTERIOR VIEW of ATLANTA AUDITORIUM
Meeting Place of Baptist World Alliance: July 22-28

