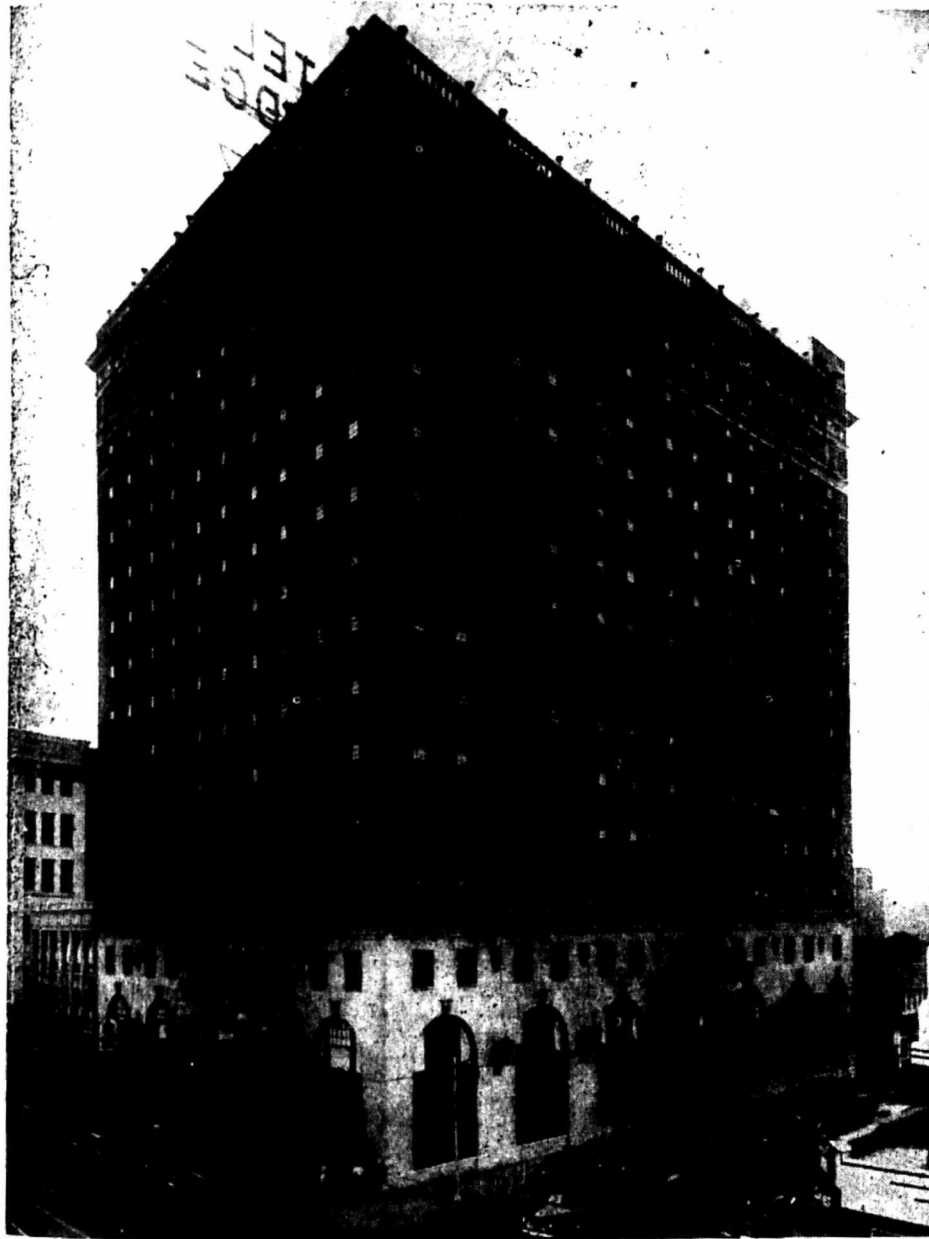


APR 21 1948

Royal Service



*Claridge Hotel, Memphis, Tenn.
W.M.U. Headquarters, May 17-18*

VOLUME 42

MAY, 1948

NUMBER 11

ROYAL SERVICE

Successor to OUR MISSION FIELDS

OFFICIAL ORGAN of
WOMAN'S MISSIONARY UNION

MAY, 1948

VOL. 42

NO. 11

In This Issue

Announcements	1, 9, 25-27, 30-32
Annual Meeting	1, 5, 9, 25, 26, 32
Bible Study	12
Book Review	10-11
Business Woman's Circles	17
Calendar of Prayer	13-14
Circle Programs	16, 17
Contributed Articles	5-7, 29
Current Events	28
Editorial	3
Family Worship	15
From Missionaries	29
Mission Study	9-11
Our Commemoration Year	4, 9
Our Young People	8-9, 27
"Pray Ye"	15
Programs—B.W.C., Circles, Plans	16-25
Royal Service Advertisement	2, 30
Society Methods	7
Southern Baptist Relief Center	26
State Addresses	30
Stewardship	6, 31
Total Abstinence Pledge	26
Training School	8-9



Just as attention is focused on Memphis for May 17-23 meetings of W.M.U. and S.B.C., so Royal Service focuses on missionary programs and kindred material for W.M.S. members. See ordering directions to right.

Entered at the post-office at Birmingham, Alabama, as second class mail matter. Acceptance for mailing at special rate of postage provided for in Section 1103, Act of October 3, 1917, authorized June 26, 1918.

SUBSCRIPTION PRICE
\$1 a Year—Single Copy 10c
No Club-rates

1111 Comer Building
Birmingham 3, Alabama

PUBLISHED MONTHLY BY
WOMAN'S MISSIONARY UNION
AUXILIARY TO THE
SOUTHERN BAPTIST CONVENTION

Mrs. George R. Martin, President; Miss Kathleen Mallory, Executive Secretary; Mrs. W. J. Cox, Treasurer; Mrs. W. Fred C. Tyler, Recording Secretary; Mrs. J. Furniss Lee, Assistant Recording Secretary; Miss Juliette Mather, Young People's Secretary

EDITORIAL STAFF

Miss Kathleen Mallory (Managing Editor), Mrs. George R. Martin, Mr. W. J. Cox, Miss Juliette Mather, Dr. Carrie U. Littlejohn, Miss Mary Christian, Mrs. W. C. Headern, Mrs. C. D. Creasman, Mrs. W. C. James, Mrs. W. H. Gray, Miss Willis Jean Stewart, Dr. W. O. Carver, Miss Rachel Colvin, Miss Virginia Wingo

When Ordering

Please remit by money-order made payable to Woman's Missionary Union. Do not send stamps unless unavoidable. Do not enclose money unless letter is registered. In order to secure prompt delivery please write name and address plainly, stating whether subscription is a new one or a renewal and with what month the subscription is to begin. A renewal or new subscription can be accepted for less than a year at \$1 a year. Please remit with order, sending it to Royal Service, 1111 Comer Building, Birmingham 3, Ala. Kindly send new address before mailing and also give old one.

EDITORIAL

"Unto Love and Good Works"

WHEN Woman's Missionary Union was still in its swaddling clothes its president called especial attention to the Scripture (*Hebrews 10:24*) from which the title of this article is selected. Now after three-score years it is gratefully used to set forth many victories as achieved by W.M.U. organizations during the calendar year of 1947.

At the Memphis meeting the Union's treasurer will reveal the unprecedented financial gains but attention can now be called to the record of the 1947 Lottie Moon Christmas Offering as reported to the Birmingham office at the close of February by the state W.M.U. executive secretaries and gratefully exhibited on page 31 of this magazine. To its total can now be added \$2,206.62 which rather recently reached the Birmingham office from the Canal Zone and the Hawaiian Islands, the resultant total being \$1,459,319.99. Never before have W.M.U. young people and the women given so generously as in 1947 to the Lottie Moon Christmas Offering—a perfect proof that their minds and hearts were united "unto love and good works".

Undoubtedly the gaining of 603 new W.M.U. organizations was a real help in such a financial victory. Thanks for the gain are due both the women and their young people, the number of new young people's organizations being 4330 and the number organized for adult women being 1164—a big total of 5494. Thus the really "grand total" of W.M.U. organizations is 46,722 of which 14,043 are Woman's Missionary Societies and 32,679 are for the graded young people, the combined gain being 3641. Unmeasured can be the world-wide influence of these 46,722 W.M.U. organizations if they "consider one another to provoke unto love and good works".

United and yet individually will such works be performed by the 806,201 W.M.U. members. In their midst are 38,680 new recruits, representing an annual gain both among the women and young people. Among the many excellent characteristics of W.M.U. membership is an increasing recognition of Christian stewardship. Thus the 1947 records show a combined gain of 44,724 tithers, the total number of W.M.U. tithers being 204,072—an average of one tither among 3.3 members. Even more remarkable is the W.M.S. average as to tithers—438,324 members of whom 174,896 are tithers, an average of one tither to 2.5 members. Remembering that many of the W.M.U. young people are tiny Sunbeams, "it is marvelous in our eyes" that the average as to tithers among W.M.U. young people is one tither among 5.6 members. No one can calculate their cumulative life-long influence if these youthful tithers "consider one another to provoke unto love and good works".

Countless Kingdom benefits will accrue also from the much mission study which was done in 1947 by W.M.U. young people and the women. The young people thus got "the eyes of their hearts enlightened" in 26,831 mission study classes, a gain of 2728 for the year. Even larger were the records made by the Woman's Missionary Societies—a gain of 3084 in a total of 33,015 classes for the women, which was an average of 2.3 classes per society. For obvious reasons many of these classes were held just prior to the observance of the seasons of prayer for state, home and foreign missions. The Woman's Missionary Societies had more of their organizations participating in these "prayer periods" than in the preceding year and it is also gratifyingly true that the combined record of the women and the W.M.U. young people shows a gain in both the Home and Foreign Mission Weeks of Prayer—25,944 organizations observing the former and 25,966 the latter. Eternity alone will reveal the manifold ways in which the programs and the prayers and the gifts of the seasons of prayer are used of God "unto love and good works". On and on the glad story could be told. At the Memphis meeting and in its minutes other victories will be set forth. Each victory can be used by zealous W.M.U. members to deepen one another's devotion and to enlist yet others "unto love and good works".—Kathleen Mallory

OUR COMMEMORATION YEAR

You Can't Just Hold On

Miss Juliette Mather, Member of
Sixtieth Anniversary Committee

TO the wise proverb, "Hitch your wagon to a star", a wit added "Hold on tight and there you are". Ambition plus perseverance would add up to success; but our age requires more than selecting your star and holding on, it demands power to speed up the wagon and wants perseverance streamlined.

In this 60th Anniversary Woman's Missionary Union set goals which will be as unreachably as the stars unless we give our best energies to starting new missionary education organizations and enlisting new members everywhere. We earnestly want at least one WMU organization in a minimum of 60 per cent of all cooperating southern Baptist churches. That will be hard? Isn't it a shining star which beckons for achievement?

It was hard to gain new organizations in 1888. Some situations still offer anti-missionary attitudes as obstacles. Some people fear the word "society", not understanding that a missionary society is to forward the Gospel and employ time for missions, not for pitiless gossip. The same prayerful persistence which won over difficulties of 1888 will achieve now. Where can your society go to organize? Look around. Where is a church without a missionary society? Without any young people's missionary education organizations? But there are women? There are young people? Win them.

YWA's set a goal of 400 net increase over their 4460 Young Woman's Auxiliaries reported in 1946. Girls' Auxiliary seeks a net gain of 1200 organizations; that will average 100 a month. Sunbeam Bands want a net gain of 1060. Royal Ambassador's 40th birthday coincides with WMU 60th Anniversary, so Royal Ambassadors are planning on growing so fast that they will have 9000 chapters with 100,000 members and 50,000 of them tithe. There are 26,764 cooperating churches. We report 14,043 Woman's Missionary Societies which leaves us 12,721 churches to help.

These brilliant goals will require real expansion and your WMS will want to reach out enthusiastically. The task is too large and too privileged for a few. Mission limps along calling for more hearts and minds to step up the tempo in telling the "Good News". World need urges rapid enlistment of more women to give and pray, to go within their association and lead their sons and daughters to be ready to go at the Lord's bidding to far places or near. Holding on to present achievements is good but today must surpass yesterday and reach growth that would be incredible save that the Lord's presence gives power for remarkable progress.

Perfecting your own Full Graded Woman's Missionary Union will help greatly in attaining the young people's goals. See through that "blind spot" of neglect that leaves you without a Young Woman's Auxiliary or a Royal Ambassador Chapter, a Girls' Auxiliary or a Sunbeam Band. Girls and young women soon are adult women, boys are fast becoming men. With the life-or-death decisions on world affairs which will doubtless confront us for the next decade, missionary education is imperative to give international understanding at the home base and supply the missionary force which gives the message of peace in men's hearts as the one sure basis for world peace. The Full Graded Union is imperative.

You can kneel to pray. You can act in organizing. You can enlist. You must do more than just hold on.

ANNUAL MEETING

A Hope and a Prayer for Our May Meeting

Mrs. H. Mahon Crawford, Chairman
Memphis W.M.U. Committee

HAVING previously expressed our warm welcome to all who will come to Memphis "On-the-Mississippi" for the annual meeting of Woman's Missionary Union, May 17-18, we now express our hopes as to the spiritual realities we pray will be manifest in the lives of all who attend this annual meeting. We desire that the annual meeting be one of prayer for God's will to be done in the lives of all our women because, through prayer, we exchange our natural strength for the supernatural strength of God. We would have all believe that, when in all our efforts we depend upon prayer, we get what God can do for His people.

We desire that our meeting be one of wise words, Scripturally based, that will urge us to courageous deeds; a time when multitudes will obey the words, "Be ye doers of the Word and not hearers only"; a time when we will go home under the pressure of the words of Jesus: "He, that beareth these words of Mine and doeth them, shall be likened unto a wise man". We desire that our meeting be one of such warm cordiality that all will feel the fellowship of kindred minds, inspired to count all things but loss for Christ and will desire the fellowship of His suffering.

We pray that it will be a time of dedication when without boast we will look proudly upon the past, courageously face the problems of the present and, with promise to serve sacrificially, look toward the future. We want this annual meeting to be one when without reservation and with genuine sincerity dedication of life and talents and time will be the fact of earth and the joy of Heaven; an annual meeting in which God's leadership is sought and God's will made known, as humbly we yield ourselves to go anywhere and do anything He asks.

We pray that the Holy Spirit's presence and power be felt, that His power make us "an exceeding great army" standing on our feet to live as good soldiers of the cross. We want our love for and belief in the Bible to be strengthened and a willingness to open wider our purses for all worthy mission causes. We pray that our hearts may be stirred as never before and that we will repent of our sins, both of omission and commission, and without reservation yield ourselves to do His work faithfully.

We pray that, after the meeting is over and you are leaving our city and our streets, you will be thinking of the streets of the Heavenly city. As you look upon the mighty Mississippi, we hope that it will suggest the crystal river of Heaven that flows out from the throne of God. We hope all drinking fountains will cause you to remember the "fountain filled with blood drawn from Emmanuel's veins".

We hope all meals will be eaten in gratitude to Jesus who is "the Bread of Life". We trust that all the lights will give thoughts of Him who is the "Light of the World".

We pray that every door you enter or leave will cause you to think of the Christ who is the door; that all flowers worn or seen will remind you of the Lily of the Valley and the Rose of Sharon fair. We hope that every tree you see will make you think of the cross and of Him who bore our sins in His own body on the tree of Calvary.

We pray that all that is put in our hearts and minds in sermon and message and song and pageant, about our heroic missionaries and mission causes, will inspire us to go forth into all the world to give the Gospel to every creature. We pray that God will be glorified in all we think and do and say and that we will say to Him what Robert Herrick said to his Anthea:

"Thou art my light, my life, my heart,
The very eyes of me
And hast command of every part
To live and die for Thee".

STEWARDSHIP

Ways in Which Women Can Tithe

THE failure of Christian women to tithe is due not so much to good reasons as to poor excuses. It is not so much ignorance of God's Word as unwillingness to do His command. Every woman can tithe if she loves the Lord enough. Loving and giving are inseparable. God, Himself, "so loved . . . that He gave . . . His Unspeakable Gift". Someone has well said: "You can give without loving but you cannot love without giving".

The woman with a regular or definite income from property or with a salary should have no difficulty deciding how to tithe. She knows it is her Christian duty and privilege as a good steward to lay aside the first tenth as holy unto the Lord.

Many married women with homemaking as a career have the responsibility of spending a greater part of the family income and determining whether or not it is wisely used. Surely God will not hold these women unaccountable for the portion that is rightfully His. When a woman offers the excuse that her husband does not believe in tithing, she might in turn be asked if she has tried conscientiously to enlist him in tithing and if she has been willing to deny herself something that would have to be purchased with money that is not rightfully hers but God's.

Farmers' wives often feel they cannot tithe because there is very little cash income on the farm. They say that there is no way to determine the tithe. But they will find from searching the Scriptures that the law of the tithe said nothing about money as such. God says in Leviticus 27:30, 32: "And all the tithe of the land, whether of the seed of the land or of the fruit of the tree, is the Lord's; it is holy unto the Lord. And all the tithe of the herd or the flock . . . the tenth shall be holy unto the Lord". Think how much it would mean to His Kingdom if these farmers' wives brought to God's storehouse the tithe of their flocks, chickens, eggs, potatoes, canned goods, beans etc. Many churches make provision for disposing of this produce and what a blessing it brings into the lives of those who have thus done what they could.

Actually there are a few women who have almost no money of their own. Certainly God does not require a tithe of that which we do not have. No tither should be discouraged if the amount is small, for it is not the amount but the proportion that is commanded of God: "Every man according as he purposeth in his heart, so let him give, not grudgingly or of necessity; for God loveth a cheerful giver"—1 Cor. 9:7: "Upon the first day of the week let every one of you lay by him in store as God has prospered him"—1 Cor. 16:2. This definitely takes care of the amount of the tithe, not in proportion to what our neighbor gives but to what each individual has. Nowhere in the Scriptures does God except anyone from paying the tithe whether it be great or small.

Some women who have little money passing through their hands set out to earn something to give to God's work. They sew, crochet, knit etc. and pay at least a tithe of their profit. Thus they can be faithful stewards of their talents as well as their income.

To limit stewardship to material resources is like limiting salvation to life hereafter, with no thought of service to Him who redeemed us. Stewardship is something more than accountability to God for use of money. It also has a claim on our time, personality, influence, talents, hospitality and many other trusts. Life, itself, is a trust and that woman is peculiarly blessed who has been entrusted with children to consecrate to the Master and to train for His service. Only eternity can tell the worth of a generation of children whose mothers have acknowledged God in their stewardship of life.—Mrs. Milton Tyler, Louisiana

Society Methods

Service Knocked at Our Door

THE year 1947 marked the Fiftieth Anniversary of First Baptist Church of Tulsa, Oklahoma. The previous fall, the church set up "goals for 1947" for herself and her various organizations. The goal for the W.M.S. was "One thousand women enlisted in W.M.U." This was breathtaking and faith-testing, for our membership was 490. We accepted the challenge, knowing that if we attempted great things for God we could expect mighty results.

How did we begin? First of all, to reach our goal we realized we "must" pray as never before, asking for guidance, faith, leadership and fellowship. Furthermore, we must put feet, hearts, hands, letters, telephones and cars on, into and behind our prayers, for this job would never be done by wishful thinking. We must work—all must cooperate.

Accordingly, we organized an enlistment committee of fifty-six women with the first vice-president as chairman—this was three from each circle, plus the vice-president and president. The church roll was secured; the name of every woman was checked and double checked if she were already enlisted. Those not enlisted were assigned to the circle that embraced each one's residence. The completed lists were given to committee members from each circle, whose responsibility it became to contact personally every woman and try to enlist her, by inviting her to our "All Church Day" (our day of general business meeting, luncheon and missionary program) and there express a desire to become a member. All visitors were and are contacted following each meeting. Every woman who unites with our church is visited within the week and invited to our society.

We found that nearly every one who was present on "All Church Day" for the first time wanted to come again, realizing what she had been missing. This emphasized another "must"—namely, an outstanding program every month—a program of such interest, merit and worthwhileness that our women would be impelled to go and seek the blessing the day was sure to bring. Many have said: "Oh! I had no idea you had such programs here each month!"

Luncheon is served following our general business session and preceding the Royal Service hour. Beautifully decorated tables, good food tastily served and fine fellowship are added attractions for the day. The widest possible publicity is given in advance through the radio, the press and the pulpit.

So, month by month, our membership grew and with it came added responsibility, for we were striving to attain the Standard of Excellence while we were pressing toward our membership goal. Our enthusiasm knew no bounds—for right before our eyes we could see the unfolding of our prayers and work. It was inspiring! It was wonderful! (It still is!)

As midnight, December 31st, struck, our anniversary year became history—the record was made. What did page of W.M.S. reveal? Her membership had reached 904 (As of March 1st, it is 930.) She had given \$5198.85 to missions. Her known tithers had increased 124%. She had met every point on the Standard of Excellence. She was A-1111

This record didn't just happen. It was accomplished through prayer, work and cooperation on the part of devoted officers, committee chairmen, circle chairmen and members. It was verily "laborers together with God" in action for His glory. We would stress "for His glory" because we were not striving and praying merely for numbers but rather that our women—every last one of them—might catch the inspiration of missions with its story of the Christ who is the only hope of a world so worn and weary.

To maintain our rating may be difficult but, with firm faith in God, we purpose to "go forward!"—Mrs. Gilbert H. Hall, President, Women's Missionary Society, First Baptist Church, Tulsa, Oklahoma

Training School

Dr. Carrie U. Littlejohn, Principal, 2881 Lexington Road, Louisville 4, Ky.

Crystallizing My Missionary Purpose

THAT the Christian's life belongs to God for service was impressed upon me from the first. The pastor who talked to me about the Savior sent me to tell another. Through Christian friends I came easily to desire to devote all my time to the Lord's work. I investigated possibilities and concluded that the prerequisites for efficient service are training and time for growth.

So I came to the Training School with a desire to learn and with the confidence that God would lead me in choosing my life work. I was interested in direct mission work, but the thought that I might be a foreign missionary was unreal.

During my first year at the Training School many missionaries came to visit there were Missionary Day speakers, there were girls who had done home mission summer work and there were others who went into foreign service. Lacking their sense of direction, my attendance at meetings of home mission prayer groups and student volunteers was hesitant and occasional.

When summer came, I worked under the Home Mission Summer Program in Baltimore. This work captivated all my energies, and I told myself I was to be a Good Will Center worker.

I returned to school with this objective. But I was restless. When I thought "I'm going to be a home missionary", I had to push down the thought: "How do you know? Aren't you trying to escape foreign service?" At last I surrendered to let God show me His way. It was as though He said: "Why divide the world? My world is one. Wait patiently and I will show you your place".

That was the turning point. On Missionary Day, December 8, I was sure God was calling me to be a foreign missionary. "If the mission bug bites you, you need never try to get away from it". It was a simple statement the speaker made, but I realized its truth in my own experience and answered: "I'm ready to stop fighting Thy will, Lord. I'm ready to go where you want me to go".—Ellen Libis, '48, Maryland



A CALL to missionary service can be a process of education—mine has been! It has not been a spectacular revelation but rather a growing awareness of God's purpose for my life.

My first year at the Training School, my friends and family often asked: "Are they going to make a missionary out of you up there in Louisville?" I always laughed, how could "they" make me a missionary? My first love in religious work was that of the educational director. I had worked as one for two years before entering the Training School and was now trying to better my techniques of serving in the local church. To that end I studied for a year and a half.

Yet all the while I was coming to know the missionary as a real person and his work as vital in the world mission of the church. The Training School is missionary in spirit: classes show the development of God's purpose for man through history; Missionary Day speakers present first-hand reports of needs on the field; letters from those now overseas witness to the effect of the Gospel. It became increasingly difficult for me to resist such a spirit. Then, too, missionary life was made more real for me through friendship with Annie Rines, missionary to Nigeria and a fellow-student this year.

These general missionary impressions were crystallized on Missionary Day in January of this year—a day that will live long in my memory. Dr. Cornell Goerner, professor of Missions at the Seminary, reported briefly on his tour of Nigeria this summer; then he challenged his hearers with the urgency of the world situation and the call for Christian action. In a day when forces of evil are bidding for the hearts and souls of men, can Christians continue to turn their backs on doors that are open as they have never before been? Are we paralyzed with fear or preoccupied with selfishness? "Tomorrow is here", he declared, "and we cannot let it pass!" The responsibility of hearing such an indictment called for a decision. I knew that I must invest my life in the work of making Christ known to the world.—Vivian Hiers, '48, North Carolina

Subject to Vote at W.M.U. Meeting, May 17-18

At the February 18-19 meeting of the Board of Trustees of the W.M.U. Training School it was voted to change the title from *principal* to *president* in referring to the head of the School. Accordingly, notice is now given that the Committee on Revision of W.M.U. Constitution and By-laws will include this proposed change in its report.—Kathleen Mallory

Books Commended for Reading and Studying in Our Commemoration Year

The Bible (Using Dr. John R. Sampey's Plan and Emphasizing Missionary Message in Daily Reading)	
Stewardship (and Christmas) Stories	\$1
Author: Mrs. Carter Wright	
In Royal Service	75c
Author: Miss Fannie E. S. Heck	
Following in His Train	60c
Author: Mrs. W. J. Cox	
To Be Continued	25c
Author: Lonnie Benson Thomas	

Order these listed books and all others as recommended by your state W.M.U. office from your Baptist Bookstore. Order for 5c a set or \$4 per 100 sets from W.M.U. Literature Dept., 1111 Comer Bldg., Birmingham 3, Ala., the Bible Book Marks with explanation of the Sampey Plan which may be started at any time.)

BOOK REVIEW and STUDY SUGGESTIONS

Miss Willie Jean Stewart, Tennessee

Following in His Train

WOMAN'S MISSIONARY UNION has been fortunate in its historians. Last month we considered Miss Fannie E. S. Heck's *In Royal Service*. This month we take up the Jubilee history "Following in His Train" by Mrs. W. J. Cox. It would be hard to find two more different books covering so much of the same ground, yet both so fascinating. (The book is to be ordered from your Baptist Bookstore, price 60c.)

Miss Heck's approach to her history is that of the story-teller—warm, human, friendly and deeply interested in the persons who brought things to pass. Mrs. Cox's approach is that of the historian with a wide grasp of sweeping movements and their significance, who sees every detail in its proper proportion and perspective and presents her history whole. Miss Heck's story is rather informal; Mrs. Cox's is well organized and star-studded with brilliant, quotable sentences which send one scurrying for note-book and pencil. Each supplements the other in a marvelous way. Happy indeed those societies with the will and the gumption to study both, one after the other!

Session One—Unit 1. Read the "Preview" of the book (pages 13-14) and make clear to the class the general plan and structure of the book. Turn to page 16 and go over the outline of Unit 1, before introducing the study.

Use "The Origin of Missions" as the basis of the day's devotional talk. Ask three women to present, each in her own way, the three other items in 1.

Using a map, present "Early Missionary Organizations" and "Southern Landmarks". Ask someone to tell of the formation of the Southern Baptist Convention and sketch the "First Federations of Women's Societies".

Discuss the need of central organizations, reasons for separate organization and the pressures leading toward a general organization for woman's work. Interpret this in the light of earlier days and of today.

Using the chronological chart on page 213f, review the important events of the period 1682-1887. Conclude with "1" (page 58) and lead in prayer for missionary societies everywhere that they may be truly missionary in spirit and in service.

Session Two—Unit 2. Base the devotional talk on the Union's first watchword, Hebrews 10:24, and its first motto. Apply it to the challenges of today.

Review briefly the first federations of women's societies and call attention to the outline of the next step under 1 (page 60). Dramatize the actual meeting for organization in 1888, calling the roll of the southern states, electing officers and deciding on headquarters. Let some woman come in, toward the end, to report reactions in the Southern Baptist Convention to their organization.

Prepare a tackboard of some kind and on it tack an outline of the area of the southern states. On this tack one by one the outlines of the ten organizing states, with the date 1888 on each. Add the other states year by year, with the year of its entry on each, telling a little of the circumstances under which it entered.

Read the constitution of the new organization (page 67f). From recent WMU minutes read the same items as they are today, with appropriate comment.

Ask an interesting speaker to tell of the first annual meeting at Memphis. Ask three other women to speak briefly on the name, the "Centennial of Modern Missions" and of some of the early officers.

Discuss the "Plan of Work". Emphasize its values.

Divide the class in three approximately equal groups and appoint a leader for each. Let each group get together, beforehand, and formulate plans for an interesting

presentation of one of the three epochs listed on page 60. Close with these presentations. Pray that this Sixtieth Anniversary may take its place among these as a period of spiritual growth and increased interest, praying and giving.

Session Three—Unit 3. Note that in the first two lessons the general sweep of WMU history has been presented. Go over the outline on page 102 and show that today we deal with the development of the various phases of WMU work as we know it now. Assign to each woman one item or, if the group is small, one section of the outline. Give a few moments for each to study her assignment. Then call on each in turn to present her assignment. Be prepared with pictures, objects, leaflets etc. to clinch each item, briefly.

Close with a devotional talk based on Matthew 28:19-20. Show in how many ways we must work to carry out Christ's command; note in the life of WMU the fulfillment of His promise. Lead in prayer for all WMU workers, at home and abroad.

Session Four—Unit 4. Ask the young people's director of your society to have a group of each organization come to sing its song, give its watchword and tell a little about its work, today. If any is missing let young people of proper age march in with their backs to the class; note that they are in the church and need organizing; then tell why there is no organization for them. Challenge the women to enlist a leader and organize them. After the young people leave or are seated, let their leaders supplement what they have said with other items from the book concerning their work.

Conduct a general discussion: "What do we need to do for our young people in this church?" Read Deuteronomy 6:4-9 and close with earnest prayer for these young people and their leaders.

Session Five—Unit 5. Ask a Training School student, present or former, to tell of the history of the WMU Training School, its various homes and the life of the School as she knew it. If none is available, supplement the section in the book with leaflets, pictures from back issues of *Royal Service* or other available materials bringing the history up to date by telling of the new home on the seven-and-a-half-acre campus next to the Seminary.

Let a Margaret Fund student tell the story of the Margaret Fund. If no student is available, have someone especially interested in the Margaret Fund discuss what the books tell about it.

Using a world map show the WMU general organizations on home and foreign fields. Tell one interesting fact about each.

Taking up the chronological outline at 1888 (page 214) use the main points as the basis of a quiz on WMU work. Cover the period through 1938.

Tell of plans for this Sixtieth Anniversary. Up to date data will be found in the 1948 WMU Year Book, in this issue and five previous issues of *Royal Service* and in minutes of 1947 WMU annual meeting.

Use the section "Following in His Train" (page 209f) for the closing devotional talk. Pray that WMU may remain loyal to its missionary purposes and plan wisely and with open minds, in the future as in the past, for the spread of the Gospel into all the world.



BIBLE STUDY

Dr. W. O. Carver, Kentucky

Fellow-Helpers to the Truth John 4:34-38; 1 Cor. 3:5-9; Heb. 11:40

CORPORATE responsibility is a primary fact and an oft-reiterated teaching of the Christian religion. Corporate responsibility can be accepted and met only by cooperative planning and combined working. That is why we have churches and why so much of the New Testament is written to the churches. That is why we have combining agencies for doing the work of faith, devoting ourselves to the labor of love and experiencing the steadfastness of hope in our Lord Jesus Christ (see 1 Thess. 1:3). While personal responsibility is great and inescapable, still for the work of the Gospel we are fellow-helpers to the truth (see III John 8).

1. From the beginning Jesus taught this truth to His disciples. The occasion at the well in Samaria is an impressive instance. So consumed was Jesus with His concern for what He could do for the Samaritans that He seemed to have forgotten His weariness and hunger. "My meat is to do the will of Him that sent Me and to accomplish His work". That work is always urgent. One needs only to look upon the fields that can suffer no delay if the harvest is to be saved. The reapers will get "wages", but their real reward is in saving the eternal fruit. Sowers and reapers are necessary to each other and will rejoice together over the results they have achieved in cooperation. This basic truth is embodied in an adage, "One soweth and another reapeth". The work of God for which Jesus was sent calls for the cooperation of human laborers. We all reap in part the sowing of others, while in turn we seed for other reapers. For our results we always "enter into the labor" of others. In this teaching Jesus emphasizes especially the succession in service, a form of cooperation we must appreciate. The opportunities of our generation are the product of our predecessors. We provide for success of our successors.

2. In the Corinthian passage the emphasis is on the interdependence of those who labor at the present task. It is aimed at those who claim personal glory or party-honor in Christian service. Apollos and Paul are nothing but ministers of the Christ for producing believers; and each accomplishes only what the Lord assigned to him as part of a work requiring all that both could do. Paul planted, Apollos watered. Both were necessary, and both were useless and worthless unless "God gave the increase". Their cooperation was essential if either's labor is to bear fruit. So with all of us: we all belong to God for service; we grow and harvest God's crops; we lay the foundations and construct God's building only as we are fellow-workers. Instead of claiming credit for ourselves we must cooperate for God's satisfaction.

3. Hebrews 11:40 throws a solemn glory over the concept of cooperation of the men and women of faith through all the centuries. The way God has planned it none of us can come into full achievement until the labor of all is rounded out. We receive what is provided for us only when all is done. Abraham and Moses, the prophets and martyrs, the apostles and evangelists, missionaries and common saints are all dependent on our fidelity for the glory of fulfillment. If we fail in our task we sin against the faith and hope of all the past and all the coming centuries.



CALENDAR of PRAYER

MAY, 1948

Mrs. W. C. Henderson, Arizona

TRUE worth is in being, not seeming—
In doing each day, that goes by,
Some little good—not in dreaming
Of great things to do by and by
For, whatever men say in their blindness
And spite of fancies of youth,
There's nothing so kingly as kindness
And nothing so royal as truth.

—Alice Carey

1—SATURDAY

Rev. and Mrs. A. Corugedo, Matanzas, Rev. and Mrs. C. Migena, Tegucigalpa, Rev. and Mrs. K. Ojeda, Santa Domingo, Cuba, evangelism, also Anita and Elsa Corugedo, Margaret Fund students.
Both be that sower and be that reaper
may rejoice together
John 4:38

2—SUNDAY

That the desire and earnest prayers for a World-wide Spiritual Revival may spread among all God's people and lead to deep consecration of Christians. Pray also for emphasis on total abstinence.
That all the kingdoms of the earth may know that Thou art God even Thou only.
Isa. 45:10

3—MONDAY

Smart Blanche Bradley and Asbury Wright, medical evangelists, 1131st Jennie L. Green, educational evangelist, Waco, Texas, Anna B. Hartwell and Edna K. Teal, Rev. and Mrs. E. M. Bostich, emeritus, Cuba.
Keep the charge of the Lord thy God, to walk in His ways, to keep His statutes.
1 Kings 2:3

4—TUESDAY

Rev. and Mrs. D. Espurva, Ft. Worth, Rev. and Mrs. S. Martinez, Beeville, Rev. and Mrs. F. Rodriguez, Kerrville, Tex., evangelism among Mexicans, also Elias, Matias and Adelaida Rodriguez, Margaret Fund students.
The Lord knoweth the way of the righteous.
Psa. 1:6

5—WEDNESDAY

Rev. and Mrs. J. J. Conwert, evangelism, Rev. and Mrs. W. W. Foster, educational evangelism, Kin de Janeiro, Rev. and Mrs. P. L. Foster, educational evangelism, Rome, Brazil, also George R. Conwert, Paul C. and Margaret Foster, William, Noble and Happy Truman Foster, Margaret Fund students.
Let the heart of them rejoice that seek the Lord.
1 Chron. 16:10

6—THURSDAY

Rev. and Mrs. A. Puciarrelli, evangelism among Italians, Birmingham, Alabama, also Lucille Puciarrelli, Margaret Fund student.
Owe, then, to God, do we give thanks
that Thy Name is near Thy wonderful works declare.
Psa. 73:1

7—FRIDAY

Mrs. Susan Anderson, Mary Perry and McKendrick Truitt, Abilene, Miss Noble C. Young, Ede, Nigeria, educational evangelism.
God is my strength and power.
—11 Sam. 22:33

8—SATURDAY

Rev. and Mrs. A. M. Sama, Tuzigango, Mimes and Beatrice Glan, (Haw) Irene Smith, Buenos Aires, Argentina, educational evangelism.
He that hath clean hands shall be stronger and stronger.
—Job 17:9

9—SUNDAY

Sunbeam Focus Week, May 9-11. Pray also for emphasis on total abstinence.
All thy children shall be taught of the Lord.
—Isa. 54:13

10—MONDAY

Rev. and Mrs. J. E. Godene, Baton, Rev. and Mrs. V. Weeks, Clovis, N.M., evangelism among Mexicans.
He which soweth bountifully shall reap also bountifully.
—11 Cor. 9:6

11—TUESDAY

Baptist believers in Hungary.
Holding the mystery of faith in a pure conscience.
—1 Tim. 3:9

12—WEDNESDAY

Rev. and Mrs. H. M. Harris, "Miss Josephine Ward, educational evangelism, Rev. and Mrs. J. A. Herring, evangelism, Kaileng, Madame R. T. Bryan and C. C. Marlett, emeritus, China; also "Cita Harris, Margaret Fund student.
With thee is the fountain of life: in Thy light shall we see light.
—Psa. 36:9

13—THURSDAY

Rev. and Mrs. J. H. Ferrer, evangelism, San Antonio de los Baños, Rev. and Mrs. J. P. de Armas, emeritus, Cuba, also Eunice Ferrer, Margaret Fund student.
He which hath begun a good work in you will perform it until the day of Jesus Christ.
—Phil. 1:6

14—FRIDAY

Rev. and Mrs. J. R. Allen, evangelism, Mrs. L. P. Appleby, publication evangelism, Beilo Horizonte, Dr. and Mrs. O. P. Macklin and Dr. R. E. Patterson, emeritus, Brazil, also Herbert Allen, David Appleby and David Macklin, Margaret Fund students.
Ye are Christ's and Christ is God's.
—1 Cor. 1:3

Calendar of Prayer for May

15-SATURDAY

Rev. and Mrs. A. R. Dally, Rev. and Mrs. H. W. Schwabach, Barranquilla, Rev. and Mrs. T. L. Neely and Mrs. L. M. Williams, Cartagena, Colombia, evangelism.
The Spirit searcheth all things, you, the deep things of God.
—1 Cor. 2:10

16-SUNDAY

Rev. L. Flores, Belito, Rev. and Mrs. P. Flores, Del Rio, Rev. M. Grimaldo, Brownwood, Tex., evangelism among Mexicans. Pray also for emphasis on total abstinence. Jesus Himself drew near and went with them.
—Luke 24:15

17-MONDAY

Woman's Missionary Union annual meeting, Memphis, Tenn., May 17-18, also that the ministry in Baptist hospitals may bear testimony for the Lord.
Gather the people together that they may hear and that they may learn and fear the Lord.
—Deut. 31:17

18-TUESDAY

Dr. and Mrs. S. E. Ayers, Miss Elizabeth Gray, medical evangelism, Misses Katie Murray and Margaret Collins, evangelism, Chemschow, Dr. T. W. Ayers, emeritus, China. They that have not heard shall understand.
—Rom. 15:21

19-WEDNESDAY

Southwestern Baptist Convention, Memphis, Tenn., May 19-21.
The Lord's portion is His people.
—Deut. 32:9

20-THURSDAY

Rev. and Mrs. L. F. Maynard (retired), Mobile, Rev. N. M. Carter, Selma, Ala., Rev. W. Tanscott, Baltimore, Md., educational evangelism among their own Negro race.
Glory, honor and peace to every man that worketh good.
—Rom. 2:10

21-FRIDAY

Rev. and Mrs. H. R. Littleton, Kumasi, Gold Coast, ex-Miss Willie Kate Baldwin, Aboor, Miss Margaret Marchman, Shaki, Nigeria, educational evangelism, also Mary Littleton, Margaret Fund student.
Your Father knoweth what things ye have need of, before ye ask Him.
—Matt. 6:8

22-SATURDAY

Rev. and Mrs. M. Brown, Morgan Clay, Mrs. Leona Wofford, New Orleans, Miss Nisa Belle Hodeson, La Fite, La., evangelism, also Charles Wofford, Margaret Fund student.
When we were without strength, in due time Christ died for the ungodly.
—Rom. 5:6

23-SUNDAY

That, in the changing plans of Woman's Missionary Union, the Kingdom of God shall be greatly advanced in all the world. Pray also for emphasis on total abstinence. That they which have believed in God might be careful to maintain good works.
—Titus 3:8

24-MONDAY

Rev. and Mrs. D. F. Adams, Panama, Rev. and Mrs. Z. P. Freeman, Tucuman, educational evangelism, Rev. and Mrs. E. S. Swanson, subnational evangelism, Buenos Aires, Argentina.
That which is altogether just shall then follow.
—Deut. 16:20

25-TUESDAY

Rev. and Mrs. D. Caprio, Santiago, Rev. and Mrs. M. J. Smith, C. Cristobal, Rev. and Mrs. Naranjo, Aguacate, evangelism, Rev. and Mrs. A. Echevarria, emeritus, Cuba. We shall be remembered before the Lord ever God.
—Num. 10:9

26-WEDNESDAY

Rev. and Mrs. I. V. Larsen and Miss Bonnie Jean Ray, evangelism, Miss Doris Knight, educational evangelism, Tsingtao, Mrs. T. C. Britton, Rev. and Mrs. E. L. Morgan, Margaret Fund student.
Who shall not fear Thee, O Lord, and glorify Thy Name? They only art holy.
—Rev. 15:4

27-THURSDAY

Rev. and Mrs. J. I. Rice, Recife, Rev. and Mrs. M. G. White, Bahia, Brazil, educational evangelism, also John and Helen Ann Rice, Margaret Fund students.
He that establishes us with you in Christ and bath anointed us, is God.
—II Cor. 1:21

28-FRIDAY

Rev. and Mrs. H. D. Stein, Misses Gladys Keith and Mrs. Minnie Graves, New Orleans, Mrs. L. G. Thompson, Montegut, La., evangelism.
We preach not ourselves but Christ Jesus the Lord.
—II Cor. 4:5

29-SATURDAY

Rev. W. M. and Dr. Martha J. Gilliland, Dr. and Mrs. R. F. Goldie, medical evangelism, Ogbomoso, Dr. and Mrs. C. W. Kefauht, educational evangelism in northern Nigeria.
That Christ may dwell in your hearts by faith.
—Eph. 3:17

30-SUNDAY

Rev. and Mrs. J. G. Morris, Rev. and Mrs. M. E. Pettit, Misses Gladys Hopewell and Catherine Walker, College of Lutheran Studies, Peking, China. Pray also for emphasis on total abstinence.
The Lord thy God, He will go over before thee.
—Deut. 31:3

31-MONDAY

Rev. and Mrs. J. A. Harrington, Bello Horizonte, Miss Ray Buster, Rio de Janeiro, educational evangelism, Rev. and Mrs. W. B. Sherwood, evangelism, Campo Grande, Brazil.
Every day will I bless Thee, and I will praise Thy Name for ever and ever.
—Psa. 145:2

Attended W. M. U. Training School
Attended Southwestern Baptist Theol. Sem.
Attended New Orleans Baptist Theol. Sem.
Former Margaret Fund Student
and On Portmab

FAMILY WORSHIP

Mrs. W. H. Gray, Alabama

TOPIC: Laborers Together in Our Denomination

Promise of Power

1st Day—Acts 1:1-14; Neh. 6:15-19
2nd Day—Psa. 126:3-6; 122
3rd Day—Jer. 1:7-19; Ezra 7:1, 6-10
4th Day—Dan. 12:3; Neh. 8:1-6
5th Day—II Tim. 1:7-12; Neh. 8:7, 8
6th Day—Phil. 2:18; Neh. 9:32-38
7th Day—Matt. 28:18-20; Neh. 10:28-32

Ministry of Preaching

8th Day—Acts 8:4-8; Neh. 13:10-14
9th Day—Acts 8:26-40; Psa. 129:9-16
10th Day—Acts 10:1-16; Mal. 1:1-5
11th Day—Acts 10:17-33; Mal. 1:6-9
12th Day—Acts 10:34-43; Mal. 2:1-9
13th Day—Acts 11:4-18; Mal. 2:10-17
14th Day—Acts 11:19-26; Mal. 3:1-6

Ministry of Healing

15th Day—Acts 3:1-10; Mal. 3:7-12
16th Day—Acts 4:1-12; Luke 3:3-6, 15-17
17th Day—Acts 4:18-31; I Kings 7:48-51
18th Day—Acts 5:12-16; I Kings 8:27-30
19th Day—Acts 9:31-35; Ezra 8:24-30
20th Day—Acts 9:36-43; Psa. 84
21st Day—Acts 14:8-18; Esch. 37:24-28

Ministry of Teaching

22nd Day—Acts 18:24-28; Esch. 47:1-8
23rd Day—Acts 19:1-8; Psa. 96:1-9
24th Day—Gal. 6:1-10; Dan. 1:1-4
25th Day—I Sam. 19:20; Dan. 1:5-7
26th Day—II Kings 4:38; Dan. 1:8-10
27th Day—John 8:1-2; Dan. 1:11-16
28th Day—Matt. 4:23; 5:19; Dan. 1:17-21
29th Day—Jonah 1:1-3; 3:1-10; Dan. 2:17-24
30th Day—Jonah 4:1-11; I Tim. 6:11-16
31st Day—Matt. 7:24-29; Dan. 3:1-7

"Pray Ye"

In thanksgiving for the goodness of God
In eager yearning for the salvation of lost souls and for a world-wide revival
In petition for the indifferent and unenlisted
In sympathy for the sick and sorrowing
For missionaries and other Christians in every land
Plead for world-wide peace according to the will of God.
Pray that young people may dedicate themselves for definitely Christian service and may steadily train thereto and that their parents will sympathetically encourage them.

Intercede for S.B.C. meeting commencing May 19 in Memphis, asking God's guidance for its president and program committee, for Memphis pastors and committees in preparatory activities. Pray too most earnestly for southwide W.M.U. meeting also in Memphis, May 17-18.

Ask God's guidance also for all preparing for the programs and attendance at W.M.U. Conference (including Business Woman's Circles) at Ridgecrest, July 29-August 4 inclusive.



Questions in this magazine from the American Standard Edition of the Revised Bible, copyrighted by the International Council of Religious Education, are used by its permission.

Circle Program



EXPLANATORY NOTE: The following program is submitted for use by the circles this month. Its suggested articles will be found in the following monthly missionary magazines: *Royal Service*, \$1 a year from 1111 Comer Bldg., Birmingham 3, Ala.; *The Window of Y.W.A.*, *Ambassador Life* and *World Comrades*, \$1 a year each from same Birmingham address; *The Commission*, 50c a year from Baptist Foreign Mission Board, Richmond 20, Virginia; *Southern Baptist Home Missions*, 25c a year from Baptist Home Mission Board, Atlanta 3, Ga. Each one participating in the following program should have access at least to the magazine in which her article appears. (See also page 35 of 1948 W.M.U. Year Book and page 17 of this magazine.)

TOPIC: Volunteers for the Kingdom

Scripture Study:—*Matthew 13:45, 46*

"Meet Some of Your Volunteers" (See May issue of *The Commission*.)

The Light of the World (See May issue of *Ambassador Life*.)

Pioneers for the Kingdom in Arabia (See May issue of *The Commission*.)

Training School (See pages 8-9 of this magazine.)

"I'm Not a Stranger in Japan" (See May issue of *World Comrades*.)

Diamond Polishers for the King (See May issue of *The Window of Y.W.A.*)

From Pain to Power (See May issue of *Southern Baptist Home Missions*.)

God's Tamale Man (See May issue of *Southern Baptist Home Missions*.)

Our Commemoration Year (See page 4 of this magazine.)

Annual Meeting (See page 5 of this magazine.)

Society Methods (See page 7 of this magazine.)

Editorial (See page 3 of this magazine.)

Stewardship (See pages 6 and 31 of this magazine.)

Business Woman's Circles

Miss Mary Christian
W.M.U. Representative

Preparation: The program material this month offers opportunity to use again a large replica of the W.M.U. pin, to bring out anew its beauty and meaning. Refer to the W.M.U. Year Book for cut of pin. From poster board of appropriate colors cut the separate parts—the open Bible, the hemispheres, the lighted torch, the border. Make them in proper proportion so that when placed together on bulletin board they will form a pretty reproduction of the pin. Print on three placards the following words: (1) Laborers (2) Together (3) with God. Make these placards of proper size and proportion to be used on the open Bible.

Type the programs on construction paper of various colors. Group and space the material both on the cover page and the inside pages so that when it is folded dolls clasping hands may be cut from it, suggesting women laboring together. Or instead draw across the bottom of the program cover feet of all sizes stepping along. In the center draw hands clasping others. At the top write the program theme: Laborers Together in Our Denomination.

Presentation: Use the hymn and devotional suggestions found in the program outline (page 19). For program material see pages 19-25.

The program chairman places on the bulletin board or flannelgraph the hemispheres, explaining that "the field is the world" and that as a circle of the missionary society the members are interested in the whole world. Above the hemispheres she places the open Bible, stating further that each member must feel a responsibility for taking the message of salvation through Christ Jesus, as proclaimed in God's Word, to people everywhere. Back of the Bible and hemispheres she places the torch and earnestly urges that the light of the Gospel message be taken to all parts of the world. She asks if there are suggestions as to ways of taking the light to the world.

The second speaker, one of the B.W.C. members, immediately replies that she has a suggestion to offer. She goes to the front and holds before all the placard on which is the word, *Laborers*. She places placard on the Bible, explaining that laborers are needed. She uses as source material the program topic, *Laborers*.

The third speaker states that she would like to add further that cooperative effort is essential also. She places the word, *Together*, on the Bible underneath *Laborers*. She uses in her discussion the material in topics, *Laborers Together* and *Together in W.M.U.*

Perhaps the B.W.C. adviser would be the fourth speaker. She steps forward, saying that she would like to present another phase of the *Together Work*. Using the topics, *Together with Our Denomination* and *A Helper Indeed*, she explains how W.M.U. participates in all Southern Baptist Convention activities as its Auxiliary. She places the border around the pin on the board, reading aloud the words on it.

The last speaker reminds the circle that the pin is not yet complete. She says that laborers are needed, both men and women working together as a denominational group, but that they need help. She places on the Bible the words, *with God*. She asks for all to repeat the full watchword with her. She gives the discussion in the topic, *Together with God*, and calls attention to the fact that this is the 60th Anniversary of Woman's Missionary Union and reminds them of the call to make this a year of consecration as set forth by Mrs. Frank Burney on page 7 of the 1948 W.M.U. Year Book. The speaker urges family worship and the reading of the Bible through this year. She further reminds the circle of Mrs. George Martin's message on page 4 of the 1948 W.M.U. Year Book, giving especially the first paragraph, *For God*, and then offers the closing prayer.

Program Plans

Prepared by Mrs. D. Wade Armstrong, Miss.
W.M.U. Training School, Louisville, Ky.

Purpose: To present the task of Woman's Missionary Union in missions: to sow, to cultivate, to gather the harvest and to inspire us to be "laborers together and with God" to the great untouched harvest yet waiting

Publicity: Make one or more posters for display on the church bulletin board or elsewhere. The picture of "The Sower", mentioned under "Presentation", might be used, asking: "W.M.U. is sowing seed, what of the harvest?" Give time and place. For invitations send cards or letters with an actual seed covered with scotch tape and the picture of a May flower just opposite, asking: "Did you sow seeds for May flowers? Don't miss W.M.U. sowing seed and gathering harvest!" Give time and place. If desired, make individual programs in the shape of May flowers.

Preparation: Order or otherwise secure your materials for the program well in advance. After prayer, select inspiring members for presenting topics of this program. Let them—the young people, the soloist and others—know of their parts in advance. A rehearsal will be beneficial. Decorate the room with May flowers. For program material see pages 19-25.

Presentation: In the front of the room in poster form tack the theme: "Laborers Together and with God". Since missions is portrayed as a field needing workers to sow seeds, to cultivate and to gather the harvest, why not for the first topic, "Laborers", use one or more of three pictures: "The Sower" (No. 695 N. T. Series E), "Angelus" (No. 37 15a) or "The Gleaners" (No. 47 15a)? These pictures are available from your Baptist Bookstore, size 8 x 10, 50 cents each. Or, if you prefer, have on a table a box of soil; actually sow the seed, water it and let the harvest be a bouquet of May flowers, saying: "All of us like to work in flower gardens. W.M.U. has one, too". At the end of the poem, "While It Is Day", darken the room if possible and have someone in the distance sing "Work for the Night Is Coming". During the second topic, "Laborers Together", have three members step forward with "Fellowship", "Power" and "Success" on colored placards cut in the shape of flowers or labeled as real flowers. Mention these as flowers in our laboring together. When "Laborers Together in W.M.U." is presented, as Sunbeams, Royal Ambassadors, Girl's Auxiliary and Young Woman's Auxiliary are mentioned, have a young person (dressed with arm bands etc. if desired) step forward representing each and holding seed. Mention W.M.U.'s planting seed of missions in the hearts of young people. As prayer and other fundamentals are emphasized, let members step forward with instruments of cultivation—hoe, rake, spade, sprinkler and shovel—representing each fundamental; pictures from catalogues may be used instead of the actual implements. The speaker will say: "Let W.M.U. continue to sow and cultivate together. Then surely we shall witness a great harvest of souls". For "Together with Our Denomination" and "A Helper Indeed" place on a table under the theme a globe or map, having America in the forefront. State that "the world is our field". Point to the Southern Baptist Convention and designate it as our own garden, where we are trying to grow beautiful flowers that we may send their seed to the world. Point to parts of the field mentioned—Cuba, China etc. Finally, in "Together with God", focus attention on the theme. Members participating in topic two may return with flowers of "Fellowship", "Power" and "Success". After the poem, place a picture of Christ (such as "The Ascension", No. 700, N. T. Series E) in front, overlooking the globe. Close with prayer after the reading of Matthew 9:37-38, 28:19-20.



PROGRAM MATERIAL

THEME for YEAR: One World—One Savior—One Task

Topic for MONTH: Laborers Together in Our Denomination

Hymn—Onward Christian Soldiers

Bible Study—John 4:34-38; 1 Corinthians 3:5-9; Hebrews 11:40 (See page 12:)

Prayer that we may realize the value of cooperation in the Lord's work

Hymn—Blest Be the Tie

Laborers

—Laborers Together

Together in the W.M.U.

Hymn—Come Women, Wide Proclaim

Prayer for greater loyalty of all W.M.U. members to God's work

Together with Our Denomination

A Helper Indeed

—Together with God

Hymn for the Year

Prayer that Woman's Missionary Union and the Southern Baptist Convention may always work together and with God for the furtherance of the Gospel

LABORERS

MISSIONS is a task requiring laborers. It is a vineyard needing dressers for the vines. It is a field needing those to sow the seeds, cultivate the crop and gather the harvest. It is a business requiring diligent and diversified labor. It involves a kingdom with a king needing servants to work for him. There is no place to be at ease in Zion.

Jesus talked much about His work. In parables of His Kingdom He told of laborers called to work in a vineyard, of sowers going forth to sow, of fishermen working with their nets, of a shepherd caring for his sheep, of a departing lord leaving his servants with work to do and talents to use. Jesus said: "My Father worketh even until now, and I work too". Again He said: "We must work the works of Him that sent Me". To His disciples He said: "He that believeth on Me, the works that I do shall he do also, and greater works than these shall he do, because I go unto the Father". Paul admonished Christians to "abound unto every good work". James said: "Be ye doers of the Word, not hearers only".

One of the most heart-breaking verses of the Bible is the statement of Jesus: "The harvest truly is plenteous, but the laborers are few". The tragedy of the centuries is that always the laborers have been too few to gather the harvest of souls. For the lack of laborers, millions who might be saved are lost. For the lack of laborers, the world grows more and more sinful every day. For the lack of laborers, Christ's Kingdom does not come as rapidly as it should. Laborers are needed to labor in the vineyard of the Lord, to sow the seed of the Word, to work in the harvest field of the world, to abound unto every good work.

There is urgency about the Lord's work. The time for labor in the Gospel is limited. Jesus said: "I must work the works of Him who sent Me while it is day, for the night cometh when no man can work". Yes, the night will come when no man can work; therefore it behooves us to be busy at the Lord's work while it is day.

There's so much work that we may do,
There're loving deeds and kind and true
To help some others on the way—
While it is day, while it is day!

There're many lost ones we should seek,
There're loving words that we should speak,
Salvation's message to convey
While it is day, while it is day!

So many places we should go,
Where dwell the lost in sin and woe,
Awaiting words which we should say
While it is day, while it is day!

No time to wait, no time to shirk,
For night comes on when none can work;
Then to the task without delay,
While it is day, while it is day!

LABORERS TOGETHER

IN God's work we are to be not only laborers but also laborers *together*. In fact most of the world's work is done by people laboring together. Few people do anything alone. Together they build great bridges, tunnel through great mountains, run great railroads, operate great business, manage great governments.

Certainly in Christianity there is no place for a hermit. We are told in God's Word earnestly to "strive together for the furtherance of the Gospel". Christians working together build great churches, develop great schools, hospitals and orphanages, support great missionary movements.

Working together in God's work means *fellowship*. There is no greater joy for Christians than "fellowship in the furtherance of the Gospel". Working at a common task for a common achievement brings delight to any Christian group.

Working together for God means *power*. "The force of powerful union conquers all". In God's Word we read: "One of you shall chase a thousand, and two shall put ten thousand to flight". According to that ratio cooperation increased the power ten times. "In union there is strength". In Christian union there is superstrength.

Working together for God means *success*. A placard in a business truly declared: "The success of this organization depends upon the cooperation of all departments". The success of the missionary enterprise depends upon the cooperation of all Christians. Only as Christians labor together can the Kingdom of God go forward.

TOGETHER in W.M.U.

66LABORERS together" are the first words in the permanent watchword of Woman's Missionary Union. These two words tell in large measure the story of six decades of W.M.U. history. In 1888 the women of the southland organized that they might work together in the furtherance of the Gospel, and together they have labored for sixty years.

Through these years we have developed a wonderful "togetherness" in our plan of organization. Individual women in a church come together to form a Woman's Missionary Society. This mother organization fosters organizations for young people—a Sunbeam Band, Royal Ambassador Chapters, Girl's Auxiliaries and a Young Woman's Auxiliary—thus affording a place of missionary training for every age group. All of these organizations together make a Woman's Missionary Union in the church. Then, church Unions come together to form an associational W.M.U.; the associational Unions come together to form the state W.M.U. and the state Unions come together to form the southwide W.M.U.—a great organization of 46,722 organizations with 806,201 members, "laborers together" in a common cause and for a common purpose.

The word "Union" in our name indicates that we are together in our work—united in a great program of service. Quoting Mrs. W. J. Cox in *Following in His Train*: "The organizational strength of the Woman's Missionary Union is in its Union—'all one body we' . . . While each state is independent it gladly recognizes an interdependence, a sense of union in carrying out the commission for missions".

In Woman's Missionary Union we are laborers together in *prayer*. Jesus promised that, "if two of you shall agree on earth as touching anything that they shall ask, it shall be done for them of My Father who is in Heaven". Surely the praying of thousands in agreement finds a hearing with the Father who is in Heaven. We feel that united praying accounts for much of the success of W.M.U.

We are laborers together in *study*. Where two or three are gathered together for mission study there is information and inspiration and strength for the mission task. Thousands of women and young people are intelligent about missions and interested in missions because they have cooperated in W.M.U. plans of study.

We are laborers together in *giving*. United giving makes large giving. Few southern Baptist women can give large sums but many, faithfully paying tithes and giving offerings, bring into the Lord's treasury millions of dollars every year.

We are laborers together in *community missions*. Members of W.M.U. organizations, united in personal soul-winning and Christian service in their various communities, are a great evangelizing and Christianizing force in our nation.

We are laborers together in the *missionary education of young people*. Our Union is not complete without the young people's organizations. By working together for the young people and with the young people we are training another generation to labor together in the furtherance of the Gospel.

Laborers together—north, east, south, west; in city, country, town and village; rich and poor, young and old; women, girls, boys and little children, laborers together to tell the world about Jesus—that's the W.M.U.

TOGETHER with OUR DENOMINATION

FROM the beginning of its history Woman's Missionary Union has been together with the denomination, not something separate, but a part of the Southern Baptist Convention participating in all of its work. This principle was established at the time of the organization of the W.M.U. In the resolutions adopted in 1887 which led to the organization the following May in Richmond was the clear statement that, "disclaiming all independent action", it was not the desire of the ladies "to interfere with the management of the existing Boards of the Convention, either in the appointment of missionaries or the direction of mission work, but . . . to be more efficient in collecting money and disseminating information on mission subjects". The new organization of women was "to give itself chiefly to creating an interest which would result in the organization of more societies and thus the contribution of larger funds, which would go without question of the manner of expenditure into the hands of the Home and Foreign Boards, elected by the Convention, in which they asked no representation". The organization was named Woman's Missionary Union, *Auxiliary* to the Southern Baptist Convention, thus declaring, even in its name, that it was not something apart but a *helper* to the Convention.

How wise were the women leaders of that day who thus fixed the relationship of the W.M.U. to the S.B.C. on the "together" basis! It was not so with the women's organizations of northern Baptists and other denominations, who chose the independent way, appointing their own missionaries and purchasing and holding their own property on mission fields. We are glad that we have stayed close by the Convention and its Boards and have been true to our name, Auxiliary, through all the years.

We must remember that long before the organization of the Woman's Missionary Union women had had an active part in the work of the denomination. At the time of the organization of the Southern Baptist Convention there were many missionary societies for women and children in the churches. After the organization of the

Convention and the formation of the Home and Foreign Mission Boards, the interest in missions increased in the churches, resulting in the organization of more and more missionary societies. Thus did the movement among women increase until in 1888 the southwide organization was formed. At that time 1206 woman's societies and children's bands were reported and they had given that year \$45,768.32. So—we see that women made valuable contributions to the work of the Convention even before there was a southwide organization.

W.M.U. has reason to be grateful for the continued help and cooperation of the leaders of the Southern Baptist Convention through the years. It was the secretary of the Foreign Mission Board who first suggested the Central Committees in the states, and for some years these committees were appointed by the secretaries of the Home and Foreign Boards. These secretaries and other denominational leaders and pastors helped the women in their work and even urged them to organize. It is doubtful if the women would ever have had the courage to organize without the encouragement of these denominational friends among the brethren. And since 1888 there have been a host of men who have been loyal and helpful to the W.M.U. Their counsel has been beneficial, their commendation has been encouraging, their cooperation has been necessary.

So, as laborers together with the Southern Baptist Convention Woman's Missionary Union has for sixty years shared in the work, the growth, the achievement and the glory of the denomination. The women are a part of the Southern Baptist Convention, and the W.M.U. has been but the means by which the women could do their part of the work of the Convention in the best possible way.

A HELPER INDEED!

TO mention all the contributions of Woman's Missionary Union to the Southern Baptist Convention would be to relate the history of both organizations. Each has helped the other and both have worked together in all the benevolent, educational and missionary projects of the denomination.

The first formal request to come to the Union after its organization was from the Home Mission Board for work in Cuba; the response was the now famous "Brick Cards" used in gathering funds for the erection of a church building in Havana. Then that first Christmas (1888) brought the Union's first Christmas Offering for China, making it possible for the Foreign Mission Board to send three new missionaries in response to Miss Lottie Moon's plea for help. This was but the beginning of a happy relationship that has existed between the W.M.U. and the mission Boards through all the years, as the women have responded gladly to the needs of the mission fields presented by the Boards and with these gifts have helped with all the work promoted by the Boards.

All gifts of Woman's Missionary Union have gone through the channels of State, Home and Foreign Mission Boards. The March and December Weeks of Prayer and gifts for home and foreign missions have poured millions of dollars into the treasuries of the Home and Foreign Mission Boards, making possible the support of missionaries, the erection of buildings and the projection of much work which without these offerings would have been impossible. In times of depression and when the Boards have been burdened by debt, these offerings have greatly helped them in carrying on the work. The secretaries have said more than once that these Weeks of Prayer gifts saved the work from disaster. Once, when financial conditions made it impossible for the Foreign Mission Board to return any missionaries to foreign lands and when large numbers were held here at home while their work suffered, the Lottie Moon Christmas Offering sent 40 and finally 125 of them back to their fields. Again, when the Home Board was so deeply in debt that all current funds had to be used to pay interest and meet notes as they came due, the Annie Armstrong Offering paid the salaries of the Board's missionaries and kept the work going.

Some years ago Dr. J. B. Lawrence, secretary of the Home Mission Board, had this to say about the Annie Armstrong Offering: "There are some services so rich, so essential, so important that all words of appreciation seem inadequate. This is the soft of service rendered by Woman's Missionary Union in the March Week of

Prayer and Annie Armstrong Offering. Year after year we are under increasing obligation to the missionary-minded women of the south for the interest which they have taken in home missions and for the money that they have raised to carry on home mission work. But far beyond the money given, we prize the spirit of cooperation and the prayers which they have offered for the blessings of Heaven upon our work."

In the last report of the Foreign Mission Board its secretary, Dr. M. Theron Rankin, wrote as follows of the Lottie Moon Christmas Offering: "For many years the Lottie Moon Christmas Offering has provided the funds for practically all buildings and equipment of our Board in all foreign fields. Homes for missionaries, school plans, seminary and training school buildings, hospital plants and their equipment have come largely from the Lottie Moon Christmas Offering. Without these funds, the current operations of the Board would have been drastically reduced, in order to provide buildings and equipment."

Woman's Missionary Union has participated in every anniversary occasion observed by southern Baptists. In 1892 came the first anniversary when all evangelical denominations celebrated the centennial of the going of William Carey to India. Southern Baptists entered into this celebration with plans for greatly advanced foreign mission work. "Though only four years old, the new Union entered into the movement with earnestness and joy. The contributions were greatly increased. The information gained bore rich fruit in increased interest throughout the states".

When the Union was twenty-five years old generous gifts were made for the Judson Centennial Fund. Part of this was used for building churches, hospitals and schools in foreign fields and part for the Church Building and Loan Fund of the Home Mission Board. This Church Building Fund was started with a gift of \$3,000 through W.M.U. and women gave the first \$20,000 on what became the Million Dollar Loan Fund to which they contributed largely for several years.

W.M.U. entered enthusiastically into the Southern Baptist Centennial Crusade in 1945. We took a third of the financial goal of \$20,000,000 but did not quite reach it. We participated in all plans of the evangelistic crusade.

Women had a worthy part in paying southern Baptist debts. When the Hundred Thousand Club was organized many members of W.M.U. joined it and made their payments regularly. In the final drive for a Debt Free Denomination in 1943 the W.M.U. gave more than the \$1,000,000 which was our goal.

Certainly W.M.U. has participated generously in all relief and rehabilitation work. In the special campaign of 1946 we gave our proportionate part of the southern Baptist gift of over \$3,000,000. Thousands of packages of clothing, food and other needed things have been sent to China, Japan and European lands.

"The major financial emphasis of W.M.U. has ever been the current denominational plan for maintaining S.B.C. missions and benevolences". When the \$75,000,000 Campaign was launched, W.M.U. accepted one fifth of the total goal or \$15,000,000 as its part. This amount was not only subscribed but was also paid. W.M.U. has loyally supported the Cooperative Program ever since its inauguration in 1925. All W.M.U. members and their organizations are urged to give regularly through the Cooperative Program according to the plan used in the local churches. No special offering is to take the place of or to supersede in importance these regular Cooperative Program gifts. Through the sixty years W.M.U. has given about one hundred million dollars to the work of the denomination through the agencies of the various states and of the Southern Baptist Convention. Almost half of that sum has been given in the last decade.

W.M.U. contributions to the denomination have not been limited to gifts of money. We feel that some of our greatest contributions have been in the realm of missionary education. To disseminate missionary information has ever been our purpose. Through our young people's organizations, through our magazines and other literature, through our programs and mission study we have helped to develop an intelligent southern Baptist constituency. W.M.U. has provided one educational

institution, our W.M.U. Training School, which has supplied missionaries and workers for every field of denominational work. Through our Margaret Fund we have provided college education for sons and daughters of missionaries. This has been not only a wonderful help to the missionaries but has supplied also the denomination with some valuable missionaries and other leaders.

Perhaps the greatest contribution to the denomination is the consecrated service and prayer life of individual women. W.M.U. has given to the Southern Baptist Convention thousands of women who pray daily and definitely for missions, who serve faithfully in all phases of the church life and who are themselves missionaries in the little world in which they live. Such women are the hope of the denomination, the hope of the nation and the hope of the world.

TOGETHER with GOD

LABORERS together with God! Good it is to labor. Good it is for people to labor together. Good it is beyond thinking for people to labor together with God.

Missions is God's work. He designed it. It is His plan for saving a lost world. And He wants our help. Yes, it is a part of His plan that those who are saved shall work with Him in saving others. So we are workers together with God in the greatest work in all the universe.

Working together with God means fellowship—not only with each other but also with God, which is the sweetest fellowship in all the world. Wonderful it is to know that God is with us as we work, that we are in His will, doing His work in His way.

Working together with God means power, divine power. God brings all the power of the universe into the partnership. It is when we work with Him that "one can chase a thousand and two put ten thousand to flight". "Ye shall receive power", said Jesus, and that power is ours when we work with God and for God.

Working together with God means success—sure success, utmost success, for God cannot fail. With God all things are possible, and when He is our partner all things are possible for us. No need to be discouraged when God works with us. No need to fear failure when God is our partner. "Laborers together with God!" Wonderful is the thought that God—the creator of the universe, all powerful, all wise, all wonderful, all divine—works with us and gives us the privilege of working with Him. Such a thought exalts our task. Such a thought lifts us into the realm of the divine.

"O matchless honor, all unsought,
High privilege, surpassing thought,
That Thou shouldst call us, Lord, to be
Linked in work-fellowship with Thee!
To carry out Thy wondrous plan,
To bear Thy messages to man;
'In trust', with Christ's own word of grace
To every soul of human race!"

QUESTIONS for REVIEW and DISCUSSION

1. Discuss the need of laborers in the mission cause.
2. Discuss the value of laboring together.
3. Tell how members of Woman's Missionary Union labor together.
4. What is the relationship of Woman's Missionary Union to the Southern Baptist Convention?
5. Tell something of the work of women in the Convention before the organization of the W.M.U.

6. Tell how denominational leaders in the Convention have helped in the work of Woman's Missionary Union.
7. What was the first special work W.M.U. did for home missions?
8. What was the first special work W.M.U. did for foreign missions?
9. Tell how the Lottie Moon Christmas and Annie Armstrong Offerings have helped the work of the denomination.
10. Tell of women's part in paying southern Baptist debts.
11. Discuss the importance of the Cooperative Program in W.M.U. financial plans.
12. What contributions, other than financial, has W.M.U. made to the denomination?
13. Discuss the wonder of being "laborers together with God".

* * * *

REFERENCE MATERIAL

The following list of reference material is the chief source used in the preparation of foregoing program, and credit is hereby given for facts and suggestions derived therefrom as well as for matter quoted in whole or in part.

The Window of Y.W.A.	—World Comrades
State Denominational Papers	—Ambassador Life
Southern Baptist Home Missions	—The Commission
Reports of Home and Foreign Mission Boards	
In Royal Service	Fannie E. S. Heck
Following in His Train	Ethlene Boone Cox
Southern Baptists Working Together	Dr. E. P. Alldredge



Remember these dates, please!

REMEMBER the week of May 17. At that time southern Baptists will be assembled in annual session in Memphis, Tenn. Woman's Missionary Union sessions will commence at 10 o'clock on that Monday morning, the closing session being scheduled for Tuesday night, May 18, before the Southern Baptist Convention is called to order on Wednesday, May 19. For other details see pages 1, 5, 9, 26, 32 of this magazine.

Remember the following summer weeks: during the week of June 1-8 the Home Mission Board will conduct its conference at Ridgecrest; then during June 17-23 inclusive the Y.W.A. Camp will be held at Ridgecrest; commencing with a night session on Thursday, July 29, and closing with the night session of Wednesday, August 4, the W.M.U. Conference including the B.W.C. Conference will be held there at Ridgecrest, after which will occur the Foreign Missions Conference and the Young Men's Missions Conference, August 5-11. Watch this magazine for further notices but begin now to be at Ridgecrest for as many of these conferences as possible.

"In-as-much" . . . "As ye would" . . . "50-50" . . . "Unseen Guest" are reminders to follow the "Golden Rule" in behalf of suffering people in war-ravaged lands. Among the several agencies that are enabling generous Americans thus to share is the *Southern Baptist Relief Center, 718 Richard Street, New Orleans 13, Louisiana*. Any size package of clean and otherwise usable clothing whether for men or women or children may be sent to this New Orleans address by *pre-paid* express or parcel post. The center sorts and repacks the clothing and seeks to ship it promptly to very needy people in Europe or the Orient. *Hands are uplifted for help!*



Registration for W.M.U. Delegates and Visitors Attending May Meeting in Memphis

In the Memphis Municipal Auditorium registration for W.M.U. delegates and visitors will commence at 8 A.M. on Monday, May 17, and will close finally at 2 P.M. on Tuesday, the 18th, but no one will be registered during the program hours of either day. The program hours will be as follows—Monday: 10 A.M., 2 P.M., 7:30 P.M.; Tuesday: 9 A.M., 2 P.M., 7:30 P.M. Each delegate must register to serve as purposed; all visitors are also urged to register. Each state can have 60 delegates, including its vice-president. There is no registration fee.

Knowing that the present generation is cursed by the liquor traffic and fearing that coming generations will suffer even more poignantly unless Christians strengthen their stand for total abstinence, an effort is now being made to get every member of southern Baptist Sunday-schools above ten years of age to sign on the last Sunday in May the following pledge, entitled "The Christian's Commitment":

"Because I love Jesus and want my life to count for Him and because I know that beverage alcohol is the foe of spiritual living and the destroyer of everything dear to the heart of my Lord, I promise myself that I will not use beverage alcohol and that I will never sell, give or serve it to others."



OUR YOUNG PEOPLE

Miss Juliette Mather, W.M.U. Young People's Secretary

Three Special Announcements for May

Sunbeam Focus Week comes May 9-15. This brings a wonderful occasion for fostering WMS to pour out encouragement for Sunbeam leaders and members. There is "a basket full" of suggestions in May *World Comrades* which the WMU young people's director and Sunbeam Band leader will discuss with pastor and WMS president as they plan for a valuable week.

An important feature to remember is that this is an opportunity for enlistment of mothers and of Sunbeam children. It is time to show the whole church and the entire Woman's Missionary Society the value of the Sunbeam Band activities by a public program, invited visitors at the Sunbeam Band meeting, display of Sunbeam handwork. Sunbeams can show some special courtesy to the fostering WMS in honor of their mothers. They can have a mission study class. They can do some really shining community missions. Sunbeam Band Focus Week can make happy memories that will live as an impetus for all the Sunbeam Band.

In this Sixtieth Anniversary we remember that children are our strategic hostages to tomorrow. What kind of tomorrow do you want? The children you lead or neglect to lead will make answer in their lives which will be louder than any protestation you may speak out.

Southwide Young Woman's Auxiliary Camp comes June 17-23 at Ridgecrest, North Carolina. You want your YWA to be represented there for the abiding enthusiasm it will develop in behalf of missions. A church secretary who went to YWA Camp at least fifteen years ago remarked: "Some of the YWA's of our church just must go this year. Nothing ever touched my life so deeply. I have always felt missions since then. The friendships with missionaries and national guests, the central emphasis on missions lifted my horizons as nothing else ever has".

Lifted horizons are imperative in our crowded crushed world. They are in fact our reasonable hope: horizons of international understanding, of world compassion for the lost, of the complete assurance of the adequacy of Christ to solve the tangles of today by His power working through Christians.

Every Woman's Missionary Society can help send a select representation from the YWA of its church. Mothers will see YWA Camp as a lasting investment in Christian development for the young woman daughter in the home. What high school graduation present could surpass this week in the mountains in a program centering in missions and planned particularly for young women?

Woman's Missionary Union now has two delightful and meaningful films to offer for YWA emphasis. One is the YWA Camp picture, "In the Land of the Sky"; it is a silent movie in color, 16mm., lasting eighteen minutes; the rental fee is \$1. It pictures life at YWA Camp, Ridgecrest, and was taken by Dr. and Mrs. J. W. Marshall. The second film, "Publish Glad Tidings", is a sound production, 16 mm., in color, twenty-four minutes in length; its rental fee is \$3. It is the story of young women in missions, acted in the main by Judson College students directed by Mrs. Cunningham of the Speech and Dramatics Department and Miss Catherine Bates, religious director. It was taken by Mr. Fred Postma, Dr. Fred B. Pearson and Mr. J. E. Berkstresser, three Alabama pastors. Scenes of WMU Training School, Baptist Hospital and Training School in New Orleans were taken on location. Music was recorded by the chancel choir of First Baptist Church, Birmingham. Taken during the Y.W.A. Fortieth Anniversary as part of the celebration plans, it is receiving high commendation wherever shown.

Send your preferred dates for either film to Birmingham headquarters. Note the difference: one requires a silent, the other a sound projector; but both are 16 mm.

Make May a mighty month in missions!

Current Missionary Events

Discussed by Mrs. W. C. James, Virginia

The scene is in Teheran, Iran, a place first called to the attention of much of the western world by the conference there of the great allied statesmen during the second World War. This scene is different. One hundred women are gathered in a Christian church. They are led in worship by an Armenian Christian, the first woman elder of the Evangelical Church of Christ in Teheran. She speaks Persian. A young Moslem Christian gives a talk on the theme, "Make level is the desert a highway for our God". They know about deserts in that part of the world; the imagery of the service is meaningful for them. A missionary leads in prayer; twenty women follow her, voicing their prayers in Persian, Armenian, Syriac, Arabic and English. They give an offering, eighty toman (\$18) to help restore bombed churches in other lands. It is the World Day of Prayer.—Miss Sue Wedell in *World Outlook*

Miss Weddell, author of the above item, is secretary of the Foreign Missions Conference of North America. Miss Louisa R. Shotwell, assistant secretary of the Home Missions Council of North America, says: "If Christian women of many denominations the world around did not gather on the day set apart to pray and if by their prayers of praise and thanksgiving and intercession they were not moved to give then, the cause of Christian leadership the world over would suffer. The philosophy underlying World Day of Prayer projects is one of training people to help themselves and their neighbors." Miss Shotwell adds: "In the home field American Indians in government schools and those who are patients in government hospitals would have little or no religious instruction and guidance were it not for the Home Missions Council religious work directors whom World Day of Prayer offerings help to maintain."

The following are a few excerpts from an article written by E. J. Bingle of *World Dominion Press* and for twenty years professor of history and bursar of Madras Christian College. "Shortly after the end of hostilities the executives of the Committee of the International Missionary Council met in Geneva to renew contact and make plans. They decided to call an enlarged meeting of the full committee in 1947; accordingly in July about one hundred people from forty countries met at Whitby, near Toronto, in Canada. . . . The Council is a body composed of twenty-six national councils and organizations. . . . I don't think I have ever been present at a conference that was so young. When only one or two people can be chosen to represent a country it is usual to find that tried and trusted seniors have been selected. But at Whitby the representatives were definitely young. Half a dozen of them were under thirty-five years of age and the average age of all the younger 'Church' delegates was only forty-two. . . . From the beginning to the end the conference was concerned with the one central theme of world evangelism. . . . First of all we spent some days in hearing and discussing statements from about thirty countries on the present position of the Christian 'Church'. In some cases it was a grim and even terrible story of destruction and demoralization. These reports and discussion revealed that totalitarianism, though defeated in the Axis countries, lived on in the three great systems of communism, Islam and political Roman Catholicism. The conference did not spend its time criticizing these three systems but was led to the conviction that, wherever these systems are in control, religious freedom slowly and surely disappears. In that sense we are living in an age of closing doors. . . . The new concern for evangelism which has been showing itself in so many places of late became articulate at Whitby and found expression in policy and planning. All this means that the missionary societies at home, missionaries in the field and the younger 'Churches' must fit their policy and plans to what God is doing and make 'expectant evangelism' our motto from now on. . . . The 'Church' in such a situation is called to revival and reformation. This can only be made possible by the rediscovery of the Biblical emphasis on the revelation of God in the Lordship of Christ, a God who acts in history, in events, in a Person. . . . Our reliance must be not on men but on the power of the Spirit who can and does break down insurmountable barriers."

A daily paper published on March 14 had the following to say: "Protestant mission leaders went home from Buck Hill Falls, Pa., this week with their minds mulling over plans described as 'the most ambitious yet devised for overseas mission'. The plans were outlined before 327 representatives of 118 mission boards in the United States and Canada, who attended the annual meeting of the Foreign Missions Conference of North America. Officially designated the 'Program of Advance' the plans, besides more than doubling yearly expenditures by mission boards in the next decade, call for an over-all reshaping of missionary policies and methods". This advance program is due to go before a Foreign Missions Assembly at Columbus, Ohio, next October and then to radiate from that center in denominational gatherings throughout North America.

From Mexico comes the news that for the past few months the evangelicals have been having a general rejoicing. Several churches have been celebrating diamond jubilees; more jubilees are coming. The General Board of the Congregational Churches started the round last October. The Society of Friends followed in November. Later the National Presbyterian Church celebrated. (Concluded on Page 29)

From MISSIONARIES

Training School Students' Zeal

LAST year the North Brazil W.M.U. Training School celebrated its Thirtieth Anniversary. Fifteen years of my life have been closely interwoven with the life of the school. During this period more than five hundred girls have been matriculated in the institution and over one hundred and fifty have received diplomas. It makes us feel humble before the Lord to think of how many lives these girls have reached and influenced for the Gospel message. A few were untrue to their calling and even a smaller number has been called to the Heavenly Home, but the larger group is active and useful in Christ's cause. Half the Baptist pastors' wives in north Brazil studied in the Training School; a good part of the women missionaries of our Brazilian Home Board went out from here; the presidents of both our Baptist colleges married our graduates; nearly all the teachers in all our primary schools over the north received their training at the school; there are nurses, field workers and state officers of various organizations who are our graduates. During these fifteen years the matriculation has quadrupled, as would be expected since all things Baptist have grown by leaps and bounds. Through the generosity of southern Baptist W.M.U. we acquired a modern three-story building which houses ninety girls and the two principals; the Mission gave us the use of an annex building for extra school work. Since the beginning, missionaries have constituted the greater part of the faculty and that accounts for the solid Bible teaching the girls have received. For the last nine years Miss Maye Bell Taylor shared the responsibility of the direction with me and she was the very greatest blessing that the Lord gave us.

The course has been gradually improved and opportunities for practical work were offered the students in summer work and by helping in different churches of the city during the school year. The girls' experiences would make good missionary biography. This year the home missionary, Nair Almeida Colares, revisited her alma mater after seven years working in and near the Indian territory of the jungles. She recounted riding flat floats up and down treacherous rivers, healing the sick, building an orphanage and preaching the Good News of salvation by grace. Jovita Meneses in the highlands of Paraiba saw her school, result of a year's hard work, fade completely away in a few days due to the lies of a Catholic priest when he arrived in the village for his annual visit. Two weeks later the very close henchman of the priest fell desperately ill and, as Jovita is a practical nurse as well as teacher, the man's relatives turned to her for help and he claims she saved his life. His public confession that the priest's accusations were lies re-established Jovita and the school to public favor. Ester Ribas, a graduate of the class of 1946, went up to a village to begin her school in the far interior of this state where there are few believers. A rented adobe hut without desks, chairs or blackboards did not offer much inducement to learning but in a short time over eighty had rushed to get a place. Each pupil was seen trudging to school with a book in one hand and his own little three-legged stool in the other. The Lord blessed her witness for Him and today dozens attend regularly worship services, following the pupils' examples by bringing their chairs.—Mrs. John Mein, Recife, Brazil

Current Events (Concluded from Page 28)

The high point of their program came when a General Assembly was formally organized. Fraternal delegations from other denominations paid the celebrating churches the compliments of the occasion, "thus strengthening the sense of fellowship". At this same time the completion of fifty years of mission work in Bolivia is being celebrated by Canadian Baptists. "The jubilees", we are told, "were not merely celebrations of past victories; ambitious plans were launched for new and vigorous advance".



*Christian views and
mission news
brought to you
at your door
EVERY MONTH
in Royal Service*

ROYAL SERVICE IS ONE DOLLAR A YEAR. ORDER FROM
1111 COMER BUILDING, BIRMINGHAM 3, ALABAMA

An Apology

Carelessly the name and title of the author of article on page 4 of the March issue of this magazine was omitted. Please, therefore, insert the following on page 4 in your copy of that issue: Miss Edwina Robinson, Mississippi W.M.U. Executive Secretary and Member of 60th Anniversary Committee.—In Sincere Apology, Kathleen Mallory

State Executive Secretaries: State W.M.U. Headquarters

Mrs. R. S. Marshall	401 South Perry Street, Montgomery 2, Ala.
Mrs. C. H. Ray	384 N. 1st Ave., Phoenix, Ariz.
Mrs. W. C. Howell	209 Baptist Building, 403 W. Capitol, Little Rock, Ark.
Mrs. Carlton M. Long	1605 M. Street, Fresno, Calif.
Miss Josephine Jones	4441 Yuma St., N.W., Washington 16, D. C.
Miss Janice Singleton	207 Rogers Building, Jacksonville 2, Fla.
Mrs. John Hathaway	Baptist Building, 291 Peachtree Street N.E., Atlanta 3, Ga.
Miss Mary Winborne	218 W. Main Street, Carbondale, Ill.
Miss Hannah E. Reynolds	127 East Broadway, Louisville 2, Ky.
Miss Marjorie Allen	Box 12, Shreveport 80, La.
Miss Edwina Robinson	307 Professional Building, Baltimore 1, Md.
Miss Eva Berry	Box 530, Jackson 105, Miss.
Miss Eva Inlow	1023 Grand Avenue, Kansas City 6, Mo.
Miss Ruth Provencher	Box 485, Albuquerque, N. M.
Miss Margaret Hutchison	119 Hillsboro Street, Raleigh, N. C.
Miss Vonnice Lance	223 1/2 N.W. First, Oklahoma City 2, Okla.
Miss Mary Northington	1301 Hampton Street, Columbia 1, S. C.
Miss Eula Mae Henderson	149 Sixth Avenue, North, Nashville 3, Tenn.
Miss Blanche Sydnor White	302 Baptist Building, Dallas 1, Texas
W.M.U. Headquarters	1 West Franklin Street, Richmond 20, Va.
W.M.U. Headquarters	1111 Comer Bldg., Birmingham 3, Ala.

Lottie Moon Christmas Offering

ONE of the many high goals of this, the Commemoration Year of Woman's Missionary Union, is the very high goal for the Lottie Moon Christmas Offering as set for \$1,600,000. The purpose thus to achieve will be strengthened by a study of the following report of receipts for the 1947 Lottie Moon Christmas Offering; this record-breaking report was rendered at the close of February by the state W.M.U. executive secretaries, the one exception being that the miscellaneous item was reported at the beginning of January by the Foreign Mission Board; the * by the District of Columbia indicates that it contributed a like amount toward the foreign mission work of the Northern Baptist Convention. "Rejoice, give thanks" for this marvelous victory and for all it can and will mean toward world-wide



State	Total Receipts	For South-wide Goal
Alabama	\$ 64,038.13	\$ 63,403.13
Arizona	2,676.23	2,676.23
Arkansas	47,488.59	47,188.59
California	3,674.70	3,674.70
District of Columbia	2,237.35*	2,237.35
Florida	45,663.36	31,000.00
Georgia	78,012.82	78,012.82
Illinois	15,801.11	13,271.81
Kentucky	55,747.91	55,587.86
Louisiana	59,359.32	59,235.65
Maryland	5,954.58	5,954.58
Mississippi	63,813.17	63,813.17
Missouri	45,506.92	45,260.17
New Mexico	9,454.85	8,180.66
North Carolina	144,736.94	144,736.94
Oklahoma	67,648.57	67,543.57
South Carolina	82,697.49	82,546.91
Tennessee	67,088.61	65,970.19
Texas	453,660.22	100,000.00
Virginia	141,254.38	51,500.00
Miscellaneous	598.12	598.12
TOTALS	\$1,457,113.37	\$992,392.45



THE SECRET OF WORLD PEACE



Chairmen for May 17-18 W.M.U. Meeting, Memphis, Tennessee

First Row (Left to Right)—Miss Helen Gardner, *Co-Chairman*; Mrs. H. Mahon Crawford, *Chairman*; Miss Helen Ammons, *Secretary*; Mrs. O. C. Gentry, *Nursery*; Mrs. A. C. Bennett, *Decorations*; Mrs. R. H. Haener, *Information*; Mrs. J. M. Curtis, *Literature and Exhibits*; Mrs. Solon G. Freeman, *Pages*

Second Row (Left to Right)—Mrs. Gilbert B. Wilson Jr., *Missionary Entertainment*; Mrs. Fred Hogan, *Restaurant*; Mrs. Henry B. Sherr, *Music*; Mrs. C. G. Carter, *Registration*; Mrs. W. R. Graves, *Lounges and Rest Rooms*; Mrs. Sam Holloway, *Hospitality*; Mrs. Albert Stone, *Check Room*; Mrs. Edward Toulon, *Publicity*

Third Row (Left to Right)—Mrs. E. H. Crawford, *Treasurer*; Mrs. D. C. Shepard, *60 Anniversary Pageant*; Mrs. Curtis Hatcher, *Badges*; Mrs. Russell G. Ragdale, *Special Meals*; Mrs. Jack Miller, *Publicity*